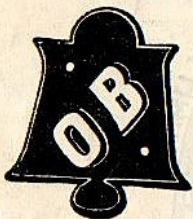


OLDHAM BREWERY

FAMOUS ALES & STOUT



Can be obtained near the ground at the following houses :-

Farmer's Boy, Waggon & Horses Hotel, Crown Hotel,
Queen's Hotel, Footballers' Arms, Bowlers' Arms,
Globe Inn, Highfield Inn, Pullett Inn, King's Arms,
Coach & Horses, Etc., Etc.

ALWAYS ASK FOR **O.B., B.O.B., OR DARBY**

STANTONS ALL THE YEAR ROUND

TICKETS — TOURS — CRUISES

GREAT BRITAIN — IRELAND — THE CONTINENT — OVERSEAS

DAY AND HALF-DAY PICNICS AND EXCURSIONS

ALL LINES :: ALL PERIODS :: ALL PRICES

FLIGHTS ALL OVER THE EARTH BY ALL AIR LINES

WE ARE OFFICIAL AGENTS FOR LMS; L & N E; CLC; GW; SOUTHERN;
IRISH & CONTINENTAL RAILWAYS; ALL STEAMSHIP & AIR LINES.

FOR FREE PROGRAMMES, INFORMATION, AND TO BOOK, CALL AT

STANTONS TRAVEL OFFICES

112, UNION ST., OLDHAM 44 Piccadilly (opposite London Road Station approach)
Manchester; also at Ashton, Stockport, Huddersfield,
Altrincham, &c.

L.M.S. TICKETS, ETC., AT 318, MIDDLETON ROAD, OLDHAM

STANTONS TICKETS PLEASE

J. Allan Hanson & Son Ltd., Printers, Croftbank Works, Cross Street, Oldham.

OLDHAM FOOTBALL CLUB

Rugby League
OFFICIAL
PROGRAMME
Price
1^d
Season 1933-34

1934



ON SALE AT ALL HOME MATCHES
OUTSIDE AND INSIDE THE GROUND

ENGAGEMENT RINGS
WEDDING RINGS
WATCHES
CLOCKS

Howell & Walsh
Limited
84 YORKSHIRE ST.
JEWELLERS
Tel. MA. 4802
8 & 10 MUMPS, OLDHAM

CUTLERY
CUT GLASS
LEATHER GOODS
CHINA TEA SETS
AND ORNAMENTS

Oldham Equitable Co-operative Society

Limited.

CENTRAL PREMISES GREENACRES HILL,
AND BRANCHES THROUGHOUT THE DISTRICT.

Goods of the Best Quality at Reasonable Prices with Efficient Service.

GET THE CO-OPERATIVE IDEA
SHARE THE BENEFITS OF MUTUAL TRADING AND
SAVE WHILE YOU SPEND.

The Surplus is returned to the Members in proportion to their purchases and, in addition, every Member and the Husband or Wife of a Member is insured. The more you purchase the greater your Dividend and the amount of your Insurance Claim.

DEPARTMENTS:

Grocery, Butchering, Boots & Shoes, Drapery, Mantles and Millinery, Coal, Furnishing and Hardware, Tailoring and Outfitting, Painting and Decorating, Drug and Optical, Bakers, Confectioners and Caterers.

For Advertising Space in this Programme, apply to—

The Secretary, Mr. R. E. WYLIE,
The Pavilion, Watersheddings,
OLDHAM. Tel. Main 4865.

Oldham Football Club,
WATERSHEDDINGS GROUND.

Oldham v. Australia

Wednesday, January 10th, 1934.

KICK-OFF 2-45 P.M.

CLUB CHAT.

The Australian's Farewell. We are proud of the distinction of being honoured by a second visit from our Australian friends, who at Watersheddings to-day, play their final game in Lancashire prior to their return to the Antipodes next Wednesday. We were similarly honoured when the 1921-22 team was over here, and in that game we were successful after being defeated in the earlier engagement. Will history repeat itself? In view of the great performances recently put up by the Aussies we should certainly be deemed supreme optimists if we dared to venture such a thing. Bigger miracles have happened in the football world; but we don't care to prophecy such an occurrence to-day. Two of our three-quarters were "laid out" on Saturday, and at the time of writing it is not known whether either will be ready for to-day's encounter; whilst Lewis is bound to be an absentee owing to a family bereavement. Naturally the "Aussies" will be anxious to wind up in good style, and no one will regret any result if we only get such a sparkling exhibition as we had on the occasion of their first visit. Whatever the result our overseas friends can rest assured of an hospitable welcome. Since their arrival in England they have made hosts of friends in Oldham. They will long remember their "half-way house" when they have come through Oldham en route for West Lancashire, for they rarely failed to make a call at our headquarters, the Friendship Hotel. Here Mr. and Mrs. Parkinson, our President and his good lady, have made it "The Friendship" in a very true sense of the word, and at our headquarters the army of players under the supervision

R. BOARDMAN & CO.

: ALE AND PORTER BOTTLERS :
AND
MINERAL WATER MANUFACTURERS

Tel. ASH. 2310. Ashton-u-Lyne. Tel. ASH. 2310.
Obtainable in the Pavilion.

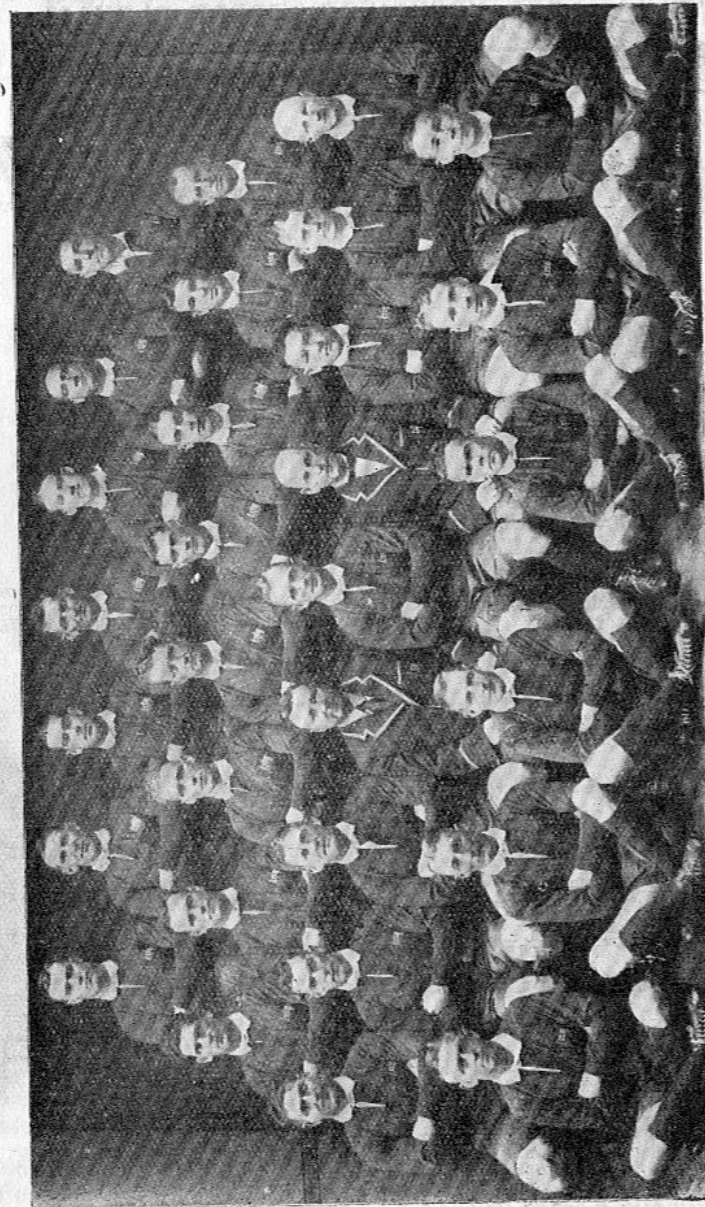
FIXTURES 1933-34.

1st TEAM FIXTURES

Date	Opponents	T	F	A	
1933-34					
Aug. 26	Broughton R'g'rs. H	3-30	31	0	
Sept. 2	Rochdale Hornets... A		15	6	
9	Australians... H	3-30	6	38	
16	St. Helens ... A		8	25	
18	St. Helens ... H	6-15	16	3	
23	Leeds ... H	3-30	24	7	
25	Lancs. v. Yorks. ...	5-45	12	15	
30	Widnes				
	<i>(1st Rd Lancs. Cup)</i>				
Oct. 3	Rochdale H. (I.C.) A	6-0	8	28	
7	Hunslet ... H	3-30	18	8	
Oct. 11	Broughton Rangers				
	<i>(2nd Rd Lancs. Cup)</i>				
14	Salford ... A		12	0	
21	Keighley ... H	3-0	8	8	
25	Wigan (Semi-Final				
	<i>Lancs. Cup)</i>				
28	Warrington... A		21	15	
Nov. 4	Widnes ... H	3-0	5	30	
11	Barrow ... A		12	0	
18	St. Helens Recs. (Lancs. Cup Final)				
	<i>at Swinton</i>				
25	Leigh... A		12	0	
Dec. 2	Batley ... H	2-45	3	19	
9	Wakefield ... A		20	15	
16	Barrow ... H	2-30	27	16	
20	London Highfield... (Wednesday)		8	7	
25	Swinton (Xmas Dy)		2-30	11	4
26	Hull Kingston R... Bozong Day		5	5	
30	Wigan ... A		2	6	
Jan. 1	Hull Kingston R. H	2-30	12	8	
6	Warrington ... H	2-30	5	5	
13	Leigh ... H	2-45			
20	Batley ... A				
27	London Highfield H	3-0			
Feb. 3	Hunslet ... A				
10	Challenge Cup 1 rd.				
17	Keighley ... A				
24	Halifax ... H	3-30			
Mar. 3	Widnes ... A				
10	Wakefield ... H	3-30			
17	St. Helens Recs. ... A				
24	Wigan ... H	3-30			
30	Swinton (G.E.) ... A				
31	Halifax ... A				
April 2	St. Helens Recs. ... H	3-30			
3	Leeds... A				
7	Rochdale Hornets H	3-30			
14	Broughton Rangers A				

"A" TEAM FIXTURES

Date	Opponents	T	F	A	
1933-34					
Sept. 2	Rochdale Hornets A	3-30	19	7	
16	St. Helens "A" ... H	3-30	33	7	
23	Leeds "A" ... A		5	23	
Oct. 7	Swinton "A" ... A		7	5	
14	Salford "A" ... H	3-30	5	0	
21	Bright'n R'ng'rs 'A' A		5	7	
28	Warrington "A" ... H	3-0	2	10	
Nov. 4	Widnes "A" ... A		2	24	
11	Barrow "A" ... H	3-0	27	10	
18	Salford "A" ... A		7	11	
25	Leigh "A" ... H	2-45	10	0	
Dec. 9	Wakefield "A" ... H	2-30	7	0	
16	Barrow "A" ... A		0	13	
23	London Highfield 'A' H	2-30	42	5	
26	Broughton R'g'rs A		2-30	23	0
30	Wigan "A" ... H	2-30	35	0	
Jan. 6	Warrington "A" ... A		5	11	
13	Leigh "A" ... A				
20	Leeds "A" ... H	2-45			
27	London Highfield 'A' A				
Feb. 3	York "A" ... H	3-0			
18	St. Helens "A" ... A				
Mar. 3	Widnes "A" ... H	3-30			
10	Wakefield "A" ... A				
17	St. Helens Recs. 'A' H	3-30			
24	Wigan "A" ... A				
31	Swinton "A" ... H	3-30			
April 2	St. Helens Recs. 'A' A				
7	Rochdale Hornets A				
14	York "A" ... A				



Back Row: R. Stehr, S. Pearce, A. Ridley, P. Madson, F. Curran, H. Denny, C. Pearce, J. Little, J. Gibb, J. Little, J. Doy'le, J. Hebble, F. O'Connor, L. Hebble, E. McMillan (Captain), W. Webb, (manager),
 Third Row: M. Glasheen, R. Morris, W. Frigg, H. Sunderland (Manager), H. Sunderland (Vice-captain), H. Neumann, A. Folwell, D. Brown, F. Neumann, F. Gardner, L. Mead, F. Gilbert, V. Hey, F. Doonan.
 Second Row: C. Smith, J. Why, F. Laws (Vice-captain),
 Front Row: V. Thicknesse, F. Gardner, L. Mead, F. Gilbert, V. Hey, F. Doonan.
 Morris was taken ill on the voyage and died after an operation at Malta.
 Photo by Melba Studios, Sydney.

of Mr. Harry Sunderland, and Mr. Wally Webb, the joint managers, have made friends innumerable and had some real enjoyable times. It will be at our headquarters after the game to-day where our visitors will be entertained to tea, with a musical evening to follow. Every preparation has been made for giving our Colonial visitors a memorable farewell.

WILLS & Co.

Dial
MAIN
4715

Over 30 years at this
Our Only Address

129, YORKSHIRE STREET, OLDHAM.

EVERYTHING FOR THE SPORTSMAN

FOOTBALL, HOCKEY, BADMINTON, FISHING
AND ALL INDOOR AND OUTDOOR GAMES.

Special Terms to Clubs.
Free Price Lists.
Deal at the old Original
Sports Shop.

WILLS Rhodes Bank OLDHAM

NO CONNECTION WITH ANY OTHER FIRM.

After the Match The MONICO

UNION STREET.

Tel. Main 4856

Licensed Restaurant

Teas & Suppers until 9-30.

SATURDAYS 10-30.

CAR PARK FREE TO PATRONS.

RUM & MILK THE FINEST PROTECTION AGAINST
COLDS OR CHILLS.

OUR "RED BILL" JAMAICA RUM
Is the finest Rum procurable.

12/- Per Bottle (We hold large stocks in Bond and to save
warehouse and rent charges are offering at) 6/6
Half Bottle

A Delicious, Stimulating and Digestive Liqueur with Coffee or Tea—
One or two teaspoonfuls, with or without milk

WM. FORSYTH Ltd.

33, Yorkshire Street - OLDHAM

Phone
MAIN
(Oldham)
4559

Tel. No. has **Not** Changed ————— Tel. Main 1412

Footballers and others

Don't
Neglect
your
injuries.

I can treat you as skill-
fully and as reasonably
as any one.

W. HOPSON, 3, Albert St., Mumps, Oldham

M. HOPSON, M.N.A., Chiropody and all foot troubles.

OLDHAM

1. Rees, T. E. (Capt.) *191*
2. Whitworth, W.
3. Bardsley, S.
4. Stephens, S. J. *137*
5. Marsh, F. E.
6. Egan, T.
7. Heywood, J.
8. Read, J.
9. Brooks, E. *5*
10. Clayton, A.
11. Ashworth, F. W.
12. Thomas, W. T.
13. Sadler, E. H.
14. ~~Butterworth, W. E.~~

G. T.

AUSTRALIA

- 26 Smith, C., or
~~10 McMillan, F.~~
- 16 Gardner, F.
- 14 Brown, D.
- ~~23 Hey, V.~~ *25 Ridley*
- 24 Pearce, C.
- 27 ~~Thicknesse, V.~~ *Hey 23*
- 20 Mead, L.
- 9 Madsen, P.
- 8 Little, J. *38*
- 13 Stehr, R.
- 11 Pearce, S.
- ~~6 Gibbs, J.~~
- 12 Prigg, W.
- 4 Doyle, J.

G. T.

Referee: Mr. A. S. DOBSON, of Featherstone.

FRIENDSHIP HOTEL,

Opposite Tram Depot.

Near Mumps Station.

MUMPS

(Fully Licensed)

Tel. Main 4980.

You must Visit the Popular FRIENDSHIP LOUNGE
For First-Class Music. Comfortable and Commodious

JAMES S. PARKINSON,
Headquarters - OLDHAM FOOTBALL CLUB. Proprietor.

FARMER'S BOY HOTEL

Proprietor - **JOE BURNETT**

(Late Werneth C.C.)

HUDDERSFIELD ROAD - OLDHAM

Nearest Hotel to the Sharples Hall Entrance to the Watersheddings Ground.

Oldham Brewery's Famous Ales and Stout.

Whose Having the Ball? When the Australians played here in September, the members of our Supporters' Club raffled off an autographed football presented to the club by Mr. G. F. Hutchins. The result of that effort was that a sum of about £15 was handed over to our funds by the Supporters Club—a very handsome effort. Another autographed ball is being raffled to-day and the result will be made known prior to the finish of the game. By the way we are afraid that a good many of the members of our club scarcely realise the good work which the Supporters Club is doing and has done for our Club. Their membership is only rising very slowly, the present number being 254, which is almost 100 less than last year. It is very difficult to see why this should be so. A great deal of good work has been accomplished and a great deal more can be done by an enthusiastic Supporters Club. The membership is only 1/- per annum, and seeing that all the money is returned to the Club, it comes back to the members in some form or other. For instance, one gets a reminder of that these cold days when a good cup of hot tea or coffee can be obtained at the two canteens provided by the Supporters Club. The officials of the Supporters Club will at any time be pleased to give any information in their power to those desirous of becoming members.

A Draw with Warrington have again foiled us in our attempt to take a couple of points from them in our League engagements this season. After having trounced us to the extent of thirty points to five in the first game at Warrington, they visited Watersheddings last Saturday and, after a strenuous fight, they managed to share the points. Their three previous away games had all ended in a defeat, but nothing daunted, they turned up on Saturday and played as though they had never known a reverse. Dingsdale continued his long run of success against us by

For TEAS and SUPPERS

Try the

CO-OP CAFE

MARKET PLACE,

OLDHAM

Phone
Main 2116.

MODERATE
CHARGES.

HARRY TAYLOR, M. P. S.

**NATIONAL
HEALTH
INSURANCE
DISPENSING.**

CHEMIST and DRUGGIST

**WINE MERCHANT—Gilbey's and
all Invalid Wines.]**

None but Purest
Drugs used.
Prompt Service.

4, Greenacres Rd., OLDHAM

Telephone: Main 1132.

scoring a very spectacular try. He made himself an extra man when his colleague started a passing movement, and a momentary relapse from their previous good defence, our team, or part of it, was caught napping and he went over for a try at the corner. Without trying to belittle the player's effort, we can safely say that none were more surprised at his success than the Warrington people themselves. However, such incidents add spice to the game, even though such spice is unpalatable to those who are defending. Compared to some of the games we have seen between the two teams, the game under notice was not a success. Thrills were numerous, but the standard of football was far from what we could reasonably expect from two such teams. There were occasions when vigour was substituted for science, and that did not tend to good football. A draw was perhaps a true reflex of the play. Each side came within a measurable distance of scoring on two occasions in the second half when the scores were level, and the last few minutes of the play were probably the most exciting of the whole game. Warrington had been desperately near snatching the lead, and then we rushed away to the other end only to see Taylor bundled into touch inches from the Warrington line. Taylor was so badly injured that he took no further part in the game. Had he remained on the field at that crucial moment, we might just possibly have won. Our forwards quite held their own, but our backs were guilty of many mistakes in handling the ball, and very frequently their errors in that respect cost us loss of valuable ground which had been valiantly gained. Now we shall have to wait another season to break our long spell of non-success against the Wirepullers.

BATH HOTEL

Proprietor - **FRANK W. NIELD**

UNION ST. - OLDHAM

Telephone Main 1406.

A convenient Hotel for Clegg Street and Central Railway Station

THE NEAREST HOTEL TO WATERSHEDDINGS GROUND.

BLACK HORSE HOTEL, Ripponden Road.

Proprietor - TOM LEES.

(Sole Proprietor of the FAMOUS WINES OF DISTINCTION.)

“Restora” Port and “Restora” Sherry.

Wilson's Famous Ales and Stout. Wines and Spirits

Telephone Main 4976.

Reserves Our reserves had none the best of luck at Warrington where **Defeated.** they were defeated by eleven points to five. Three penalty goals to the home team were a great factor in their success. They only crossed our line once, and a score of nine points to nil at half time when Warrington had the wind in their favour did not by any means reflect the run of the play. Kershaw scored a clever try early on in the second half, but despite brilliant work by his colleagues in the rear division, our reserves were unable to wipe out the arrears.

Leigh's Next Saturday we receive a visit from Leigh, a team that has **Visit.** this season shown a really wonderful recovery. When we visited Leigh a few weeks ago, they gave a really brilliant exhibition in the second half, and finally beat us by nineteen points to three. They have had a few bad days since then; but that does not alter the fact that they are a most improved side, and visitors to our ground next Saturday should witness a very interesting contest.

MARKET HOTEL, CURZON STREET - OLDHAM

HERMAN HILTON, Proprietor.

(Ex-Captain Oldham F.C., English International and Australasian Tourist)

Concerts every Friday, Saturday and Monday, at 8 o'clock.

WINES AND SPIRITS OF THE FINEST QUALITY.

OLDHAM BREWERY'S FAMOUS ALES & STOUT

WILSON'S BREWERY LIMITED



A GUARANTEE TO THE PUBLIC OF THE PURITY AND QUALITY OF THEIR ALES AND STOUT.

The ever-growing reputation and demand for our famous

“WEMBLEY” Bottled Beer

is testimony to its quality.

At the price it is the finest value for money in the trade.

Brewed and Bottled by—

WILSON'S BREWERY LIMITED
Newton Heath - MANGHESTER

LOOK FOR THE SIGN OF QUALITY