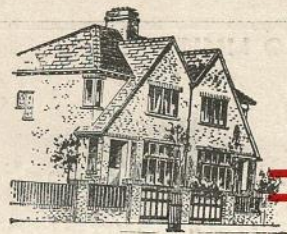


Home Owning

on easy terms...



Why pay rent— When you can purchase out of income the home of your dreams through the medium of the Co-operative Permanent Building Society on the easiest and most convenient terms of repayment to suit your individual requirements.

INCORPORATED 1884



INVEST YOUR SAVINGS

ASSETS **3%** FREE OF
£21,000,000 INCOME TAX

Write or call for full particulars :

CO-OPERATIVE PERMANENT BUILDING SOCIETY

Head Office : NEW OXFORD HOUSE, W.C.1

District Offices :

PICCADILLY, MANCHESTER 1.

Telephone : **CEN**tral 3954 (2 lines)

Printed and Published by Broughton Rangers (Belle Vue) Ltd., by W. Paterson & Co., Ashton Old Road, Manchester 11.
Phone EAST 0519.

Advertising Contractors: Wrights Publicity, 39 Piccadilly, Manchester, 1. Phone CENtra 2579

THE SCRUM

The Magazine Programme

OF THE



BROUGHTON RANGERS

BELLE VUE LIMITED

RUGBY FOOTBALL CLUB

No. 4. Season 1936-7. : SATURDAY, OCT. 24th, 1936 : Price Twopence



ASK

FOR

LION POTATO CRISPS

BRITISH AND BEST

FOODPACKERS LTD., Trafford Park, Manchester

PICCADILLY

TO-DAY (Sat.) Continuous from 12-30

JESSIE MATTHEWS

SONNIE and ROBERT
HALE and YOUNG

in
IT'S LOVE

AGAIN

FOWLER'S "A.I." PIES ARE PERFECT

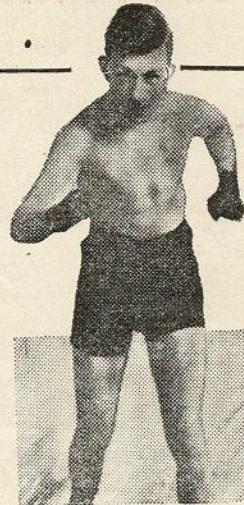
SOLD AT ALL BARS ON BELLE VUE GROUND

Follow the Rangers . . .

AND USE

MANSFIELD'S MASSAGE OIL

An excellent combination of Active Oils for
RHEUMATISM, NEURITIS, SCIATICA, LUMBAGO,
NEURALGIA, RHEUMATOID ARTHRITIS,
SPRAINS AND ALL STIFFNESS.



ALF MANSFIELD.
Ex-Flyweight Champion

Prices :
1/3, 2/-, 3/- & 4/6

Obtainable at Alec Watson
& Mitchell's Ltd. at Newton
Street, Oxford Street and
Market Street, Boots, and
all principal Sports
Outfitters and Chemists.

EVERY BOTTLE CARRIES GUARANTEE
NO RELIEF ——— MONEY REFUNDED

Manchester Address :
54, GT. JACKSON ST., MANCHESTER, 15

As used by :

BROUGHTON RANGERS,
THE LATE SIR HARRY PRESTON,
SIR BEN TURNER,
COUN. THOMAS MEAHAM, J.P.,
MIDDLESBROUGH,
GORDON RICHARDS,
BENNY LYNCH,
JOCK McAVOY,
JACKIE BROWN,
LEN HARVEY,
DOUGLAS CLARK,
ROY BARRACLOUGH,
MRS. JACK HYLTON,
JIMMIE JAMES,
ARTHUR TRACY,
JACK PAYNE,
MISS ROSALIND WADE AND
HER B.B.C. DANCERS, ETC.

COLOUR PRINTING
CATALOGUES
MANUFACTURED STATIONERY
ACCOUNT BOOKS

TELEPHONE: EAST 0519.

W. PATERSON & CO.

ASHTON OLD ROAD
MANCHESTER 11.

ESTABLISHED 1887.

COLOUR PRINTING
CATALOGUES
MANUFACTURED STATIONERY
ACCOUNT BOOKS

BROUGHTON RANGERS

(BELLE VUE) LIMITED

THE RUGBY LEAGUE



PRESIDENT - - - - J. HENRY ILES, J.P.
VICE-PRESIDENT - - - - GEORGE WILSON
DIRECTORS - CAPTAIN S. H. HAMPSON, M.C., J.P.,
B. L. ATKINSON, DR. J. WISHART.
HON. SECRETARY - - - - TOM SPEDDING

No. 4. Oct. 24th, 1936 :: Official Programme :: Price Twopence

EDITOR: WILLIAM RUBINSTEIN - - BELLE VUE GARDENS, MANCHESTER 12

WELCOME OWDHAM

In Oldham. we entertain to-day an improving side, their victory last Saturday over Keighley taking them six places up the table.

Last season they finished in the 15th position with 41 pts. against Rangers' 49 pts. for the six place. Oldham's record for all matches last term was—

Played 43,	won 23,	lost 19,	drawn 1.
Scores: For	92 goals.	87 tries.	445 points.
Against	72 goals.	84 tries.	396 points.

Highest Scorers: T. Rees, 74 goals; T. Taylor, 20 tries.

In last season's match at Belle Vue their team was—Griffiths; Taylor, Macrae, C. Davies, N. Holt; Green, Spencer; Read, Clayton, L. Rees, Pugh, Garnett, Givvons.

The game ended in a win for the visitors by 8 pts. to 7 the match at Oldham also finding Rangers a point behind—6-5. Compared with the thirteen who were here last year only Taylor, Macrae, Holt, Pugh, and Garnett have been selected for to-day.

A notable feature of our visitors' play this term has been the form of Greenall (late St. Helens Recs.) at half-back, while Macrae is also showing evidence of a return of the skill that gave him his reputation in Brisbane. Holt, of course, is the amateur from Oldham R.U.F.C.

Wales honoured Pugh last season versus France, and this forward rarely plays a bad game.

The Oldham Club has a great record over a long period, and we sincerely hope to see a return to their former greatness.

Welcome Owdham!

Phone DEANS 2102

Phone DEANS 2102

HAVE YOUR FURS REMODELLED FURS

REDUCED PRICES

BEFORE THE WINTER
To keep our factory
busy we will clean, repair, and remodel your FUR or FUR COAT
EQUAL TO NEW at HALF USUAL PRICES. SAVE POUNDS BY
DEALING WITH ACTUAL MANUFACTURERS. Send P.C. or call
TO-DAY! Estimates and advice FREE! This offer is for TWO
WEEKS ONLY! Satisfaction GUARANTEED Before Payment.

NOW AT

HALF
NORMAL
PRICES

NORTH FUR CO.

Old-Established Furriers.
18, BROWN ST., MANCHESTER
42, BRADSHAWGATE, BOLTON

NORTH FUR CO., 18, BROWN ST., MANCHESTER



After our first defeats of the season in League matches, two matches on the run, we shall be anxious to-day to stop the unlucky sequence. There is also a little point of honour to settle in the game, for when we met Oldham last year they conquered us by a mere one point both home and away. A point is a point, of course, but such close decisions demand reversal at the earliest possible opportunity. So the boys will be all set to-day to play the game of their lives.

Congratulations to Salford on winning the Lancashire Cup for the third time. And also to Wigan who for three years have been runners-up, only failing to lift the Cup by a narrow margin. A brilliant try by Osbaldeston—the only one of the match—brought the victory last Saturday to Salford. And—ironic happening—he was born in Wigan! The result, 5-2, showed how close the game was, and we, who were ousted from the competition by a single point, can sympathise with Wigan. Still, there's always next year.

Interest in competitions now centres chiefly on the Rugby League Cup, although it is a long

way off before we get busy on that. For those who like to think ahead here are the essential dates:—1st Round, Feb. 13; 2nd Round, Feb. 27; 3rd Round, March 13; Semi-Finals, April 3; and the Final takes place on May 8th. The enthusiastic secretary of the Supporters Club is already saving up for a big celebration event—IF we win the Cup.

Speaking about the Supporters Club reminds me that they have not forgotten the social side, and plans are now being made for the opening event of the season—to take the form of a dance and (possibly) hot-pot supper. Matters have been somewhat delayed owing to big structural improvements which are being made in Belle Vue, but it is hoped to start off on November 4th, and all members will be notified by post.

It was a tough game at Huddersfield last Saturday in which wind and rain played a big part. Facing the elements in the first half added a tremendous handicap, and most people reckoned we were lucky to hold Huddersfield to a five points lead at the interval. But it was obvious that the effort had taken a lot out of our boys, and although

they fought very hard, adding two points to the score and preventing the home team gaining any advance, there was just that fire missing which might have carried us to victory. Still, it was a good game, fought cleanly, and we have no complaints.

A STALWART PASSES.

Joe Ferguson has passed on.

Joe was Oldham's famous old stalwart. He achieved the remarkable record of playing 24 consecutive seasons for the Oldham Club, and he gained every honour possible with the exception of a Colonial tour, which he was offered but had to refuse on business grounds. A great forward and magnificent kicker, Joe in his day was one of the most popular figures in the Rugby world.

Aged 57, he died last Sunday after a lengthy illness within earshot of the ground where he had played so many grand games.

All R.L. supporters extend sympathy to his widow and daughter, and regret the passing of a grand old man of the game.

The Belle Vue management are always going out of their way to make things easier for patrons. For instance, quite a few wrote recently telling of a special fast train which leaves Buxton every

Saturday, but it goes right through to London Road station, and all Rangers supporters had to make a tiresome journey to the Stadium from town. So the excursions manager got busy on the job. The result is that the L.M.S. kindly agreed to stop the train at Longsight station on its way into town.

So now, all your Rugby followers from Buxton, Chapel, Whaley Bridge, Furness Vale, New Mills, Disley, Middlewood, Hazel Grove, Davenport and Stockport, you can catch the 1-20 from Buxton, and whenever we have a home match the train will stop at Longsight station—which is only a few minutes' walk from the Stadium. Just as a reminder of these home dates, here they are:—Oct. 24; Nov. 7, 21; Dec. 5, 19; Jan. 2, 6, 30; Feb. 20; March 6, 20; and Apl. 3, 10, and 24. We feel like copying Mr. Austin Reed and saying: " . . . Just a part of the Rangers service."

By the way, the "A" team match v. Oldham which should have been played this afternoon, is postponed. The reason, of course, is the match which is being played on the ground between the League and the visiting Cote Basque team.

ALEC WATSON & MITCHELL'S, L^{TD}

FOR YOUR SPORTS OUTFIT

FOOTBALL (RUGBY and ASSOCIATION)

HOCKEY . LACROSSE . BADMINTON

BASEBALL . SKATING . etc.

CATALOGUES POST FREE

1, NEWTON STREET, PICCADILLY,
35, OXFORD STREET,
50, MARKET STREET,

MANCHESTER, 1

Congratulations to our three players who were honoured with County caps on Wednesday. Garvey and Cumberbatch played for the victorious Lancashire side, and both were successful in scoring a try. Stott was selected for Yorkshire. All of them acquitted themselves well. In addition, Garvey has now been again given the high honour of playing for England v. Wales at Pontypridd on November 7th. To those who have been following the Rangers this season it has for long been obvious that Garvey deserved this recognition.

Here's a little inside story about Wednesday's match at Castleford. Garvey nearly didn't reach the ground at all. Through his 'bus

from St. Helens to Manchester being delayed, he arrived at the station just in time to see the train leaving the platform. There was no other available which would get him there in time. Immediately he got into touch with Belle Vue, and the management placed a fast car at his disposal which got him to Castleford in comfortable time.

KICK-OFF TIMES.	
Aug. 25 to Oct. 15	3-30
Oct. 16 to Nov. 15	3-0
Nov. 16 to Dec. 7	2-45
Dec. 8 to Jan. 7	2-30
Jan. 8 to Jan. 22	2-45
Jan. 23 to Feb. 9	3-0
Feb. 10 to Apl. 30	3-30

THE "SCRUM" PRIZE SCHEME

TURN TO THE FRONT OF THIS PROGRAMME. A board will be sent round the ground bearing a number corresponding to one of the numbers on a programme. If yours is the lucky number a prize of Two Free Tickets for any Rangers match will be awarded. Call at the Pavilion after the match to claim the prize.

SCORE BOARD KEY

SATURDAY, OCTOBER 24th, 1936

The Half-time Scores of the following Matches will be displayed on the Score Board as soon as received.

- A—Widnesv. B—Salford.....
 C—Barrowv. D—Swinton
 E—Wolverhampton Wv. F—Manchester City

RUGBY LEAGUE COMBINATION MATCH AT BELLE VUE

Saturday, October 31st, 1936 Kick-Off 3-0

BROUGHTON RANGERS "A"

v.

SWINTON "A"

A ROVING RUGBY REPORTER

THE TOURISTS WELCOMED BACK

A MAGNIFICENT TROPHY—WHY NOT A RANGERS REUNION?—
FINANCES OF THE TOURS

BY TOM LONGWORTH

The Well-known Rugby League Commentator

I HOPE that sometime in the near future it may be possible for you Broughton Rangers' folk to have a glimpse at the Courtney Goodwill trophy which the Australian touring team have brought back with them.

Certainly the largest and the finest piece of work of its kind I have ever seen.

It is a large silver-embossed globe of the world with the four countries in which the game is played—England, Australia, New Zealand and France—marked out in representative enamelled colours.

Surmounting the globe are goal-posts and a hand clasping the symbol of goodwill. In the angle formed by the clasped hands rests a football.

The globe is supported by a base of finely-grained woods from the four countries, arranged like a pyramid in four layers. On the various steps of the base are natural figures moulded by English and Australian craftsmen: Britannia with the British lion at her feet; the chanticleer of France; the kangaroo and aboriginal of Australia; and the Maori and kiwi of New Zealand. Action plates on the sides of the base portray four prominent

pioneers of the code—H. Wagstaff (England), H. Messenger (Australia), J. Galia (France), and A. H. Baskerville (New Zealand).

To have been strictly correct, Lomas, as England's first captain in overseas football, should have been given pride of place over Wagstaff.

It was good to see the famous Cumbrian and Salford captain honoured with a place among the guests at the welcome home to the Tourists last week.

To see Lomas, Wagstaff, Parkin, Sullivan and Brough all sat to-

gether brought back many memories.

A GREAT RE-UNION.

It was a happy idea, this reunion. It is 26 years since England sent her first professional side overseas, and it is 29 years since the original, or Baskerville's, "All Blacks" came over. A further happy link with the distant past was the presence of Mr. J. H. Houghton, who, along with the late Mr. John Clifford, managed the first British tour.

To have completed the picture the Council should have invited

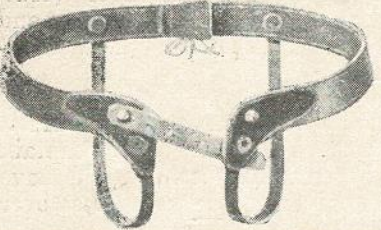
BROUGHTON RANGERS v. OLDHAM

PLAY 40 MINUTES EACH WAY

:: Saturday, October 24th, 1936 ::

KICK-OFF AT 3 PM.

FACTS ABOUT RUPTURE
 10/- Send To-day for FREE BOOKLET and particulars of this Modern Appliance and 25 other types
 SINGLE 15/-
DOUBLE



H. KAY & CO
 CROMFORD COURT,
 off Corporation Street
 MANCHESTER, 4

SENT ON APPROVAL Patent imp. rishable pads made to any size or shape. Obtainable through N.H.I. Societies
 Cut out for reference

<p>BROUGHTON Colours : Blue & White</p> <p style="text-align: center;">1. Howells <i>Full Back</i></p> <p>2. Kenny <i>R. Wing</i></p> <p>3. Stott <i>R. Centre</i></p> <p>4. Abbott <i>L. Centre</i></p> <p>5. Cumberbatch <i>L. Wing</i></p> <p>6. Garvey J. (Capt.) <i>Stand-off Half</i></p> <p>7. Thompson <i>Scrum Half</i></p> <p>8. Whitcombe <i>R. Front Row</i></p> <p>9. Jones <i>Hooker</i></p> <p>10. Morgan <i>L. Front Row</i></p> <p>11. Bunter <i>R. Second Row</i></p> <p>12. Mills <i>L. Second Row</i></p> <p>13. Manning <i>Loose Forward</i></p> <p style="text-align: center;">Referee : L. GREENWOOD</p> <p>13. Cattlin <i>Loose Forward</i></p> <p>12. Pugh <i>L. Second Row</i></p> <p>11. Ambler <i>R. Second Row</i></p> <p>10. Garnett <i>L. Front Row</i></p> <p>9. Brookes <i>Hooker</i></p> <p>8. Ashworth <i>R. Front Row</i></p> <p>7. Greenall <i>Scrum Half</i></p> <p>6. Barnes <i>Stand-off Half</i></p> <p>5. Holt <i>L. Wing</i></p> <p>4. Macrae <i>L. Centre</i></p> <p>3. Bardsley <i>R. Centre</i></p> <p>2. Taylor <i>R. Wing</i></p> <p style="text-align: center;">1. T. Rees <i>Full Back</i></p> <p>Colours : Red & White</p>	<p>RANGERS Quarters, White Pants</p> <p style="text-align: center;">1. Howells <i>Full Back</i></p> <p>2. Kenny <i>R. Wing</i></p> <p>3. Stott <i>R. Centre</i></p> <p>4. Abbott <i>L. Centre</i></p> <p>5. Cumberbatch <i>L. Wing</i></p> <p>6. Barnes <i>Stand-off Half</i></p> <p>7. Thompson <i>Scrum Half</i></p> <p>8. Ashworth <i>R. Front Row</i></p> <p>9. Brookes <i>Hooker</i></p> <p>10. Garnett <i>L. Front Row</i></p> <p>11. Ambler <i>R. Second Row</i></p> <p>12. Pugh <i>L. Second Row</i></p> <p>13. Cattlin <i>Loose Forward</i></p> <p style="text-align: center;">Touch Judges : H. BARRETT and E. HOUGHTON</p> <p style="text-align: center;">Blue Pants.</p>
---	--

Should any Alteration be made a Notice will be sent round giving the Player's Name and Number

SPORTS GOODS for Every Sport

Football, Hockey, Lacrosse, Rugby

SEND FOR OUR FREE CATALOGUE

Tyldesley & Holbrook
 The Practical Sports Outfitters
 109, Deansgate, Manchester 3

STANTON or SWAN & LEACH for TRAVEL

BY RAIL, ROAD, RIVER,
 :: SEA, OCEAN, AIR ::

Independent Travel Tickets. Picnics and Excursions for Parties. Conducted and other Tours—British Islands, the Continent & abroad. Ocean Pleasure Cruises. Voyages

Programmes, Pamphlets, Bills and all information FREE and TICKETS at

STANTON : Travel Booking Offices :
 44, PICCADILLY, MANCHESTER, 1. Tel. : Cen. 7549
 (opposite London Road Station Main App.)

SWAN & LEACH TRAVEL BOOKING OFFICES :
 27, PRINCESS STREET, A BERT SQUARE, MANCHESTER, 1. Tel. : Cen. 4209. 212, STRETFORD ROAD, MANCHESTER, 15. Tel. : Cen. 1848.
 Official Agents—LMS; L & NE; CLC; GW and other Railways. All Steamship Lines, Airways.

THE AUSTIN LANDAULETTE SPECIALISTS

The Largest Selection of AUSTIN TWENTIES in the United Kingdom in Stock for Sale.

Also a Large Variety of other makes in Seven-passenger Vehicles.
 Open every day till 8 p.m. Saturdays 6 p.m. Sundays 11 a.m. to 2 p.m.

CARS CARRY WRITTEN GUARANTEE FOR 3 MONTHS
 CONVENIENT HIRE-PURCHASE TERMS & EXCHANGES

GREEN & ZONIS

(3 mins. from Town).

186-188, BURY NEW ROAD, MANCHESTER, 8
 Grams : "Austlarde, Manchester." Phone : BRoughton 2261-2262

Mr. J. H. Smith, one of the few founders maintaining active association with the game; Lance Todd, George Smith and Edgar Wrigley, three members of the famous "All Blacks" of 1907-8 who are now resident in England.

This re-union idea should be copied by supporters' clubs. For instance, what a fuss you Broughton Rangers fans would make, if some evening you were introduced to the survivors of that famous team of yours that won the League Championship and the Challenge Cup in 1901-2 and the Lancashire Cup in 1906-7. The men who have carved their names indelibly in League and club history should not be forgotten.

The majority of those assembled at Leeds last Wednesday had never seen Lomas before in their lives. It was the first time ever Jim Brough had met him. They must have marvelled at his amazing health. There was not a stronger man in the room.

There was a break in the managerial sequence. In addition to Mr. John Clifford (1910 and 1914) and Mr. Sydney Foster (1920), who have passed into the great beyond, Mr. Edmund Osborne (1924 and 1928) was absent.

They do these things on a much larger scale out in Australia. Those who have represented the Commonwealth overseas become members of a brotherhood that meets annually to refresh memories of old associations. Harold Wagstaff showed me a list of autographs which had been sent to him from the last gathering of the clan in Australia.

How his eyes sparkled as he went through the list—what memories they created. Mr. G. F. Hutchins, president of the Oldham club, who will no doubt be with you to-day—unless he has gone scouting—has long been in favour

of creating a similar bond of fellowship between the players who have served overseas, just as in the same way you and I make a pilgrimage once a year, to sup, dine, and talk over old times with fellow-survivors of 1914-18.

TOURS HAVE MADE THE GAME.

Mr. Hutchins, you must know, jointly managed the tours of 1928 and 1932, and has had probably more to do with Test matches at home and abroad than any other legislator.

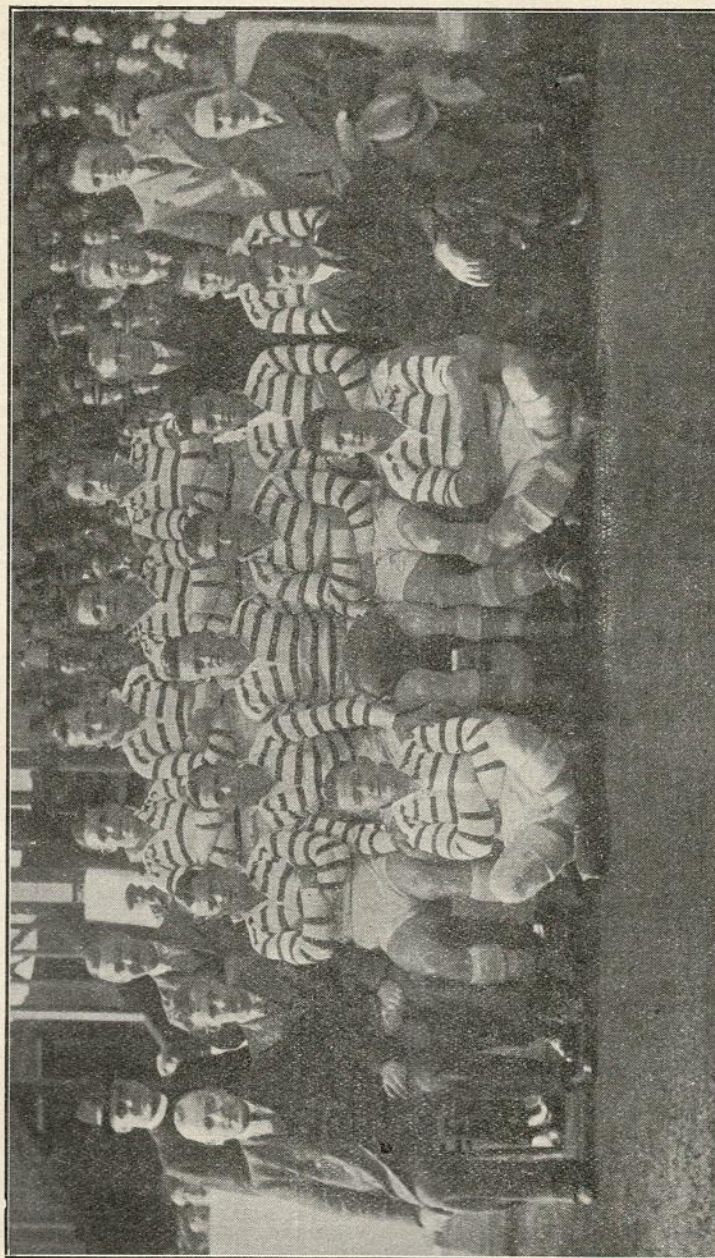
Perhaps you are not aware that these tours of British teams abroad are the greatest source of Rugby League revenue. Including the £7,863 made on the last trip, the nett profit from seven visits to Australia have produced the vast sum of £43,434, a third share of which has been divided among the players.

The League takes 60 per cent. of the receipts, but loses on the rate of exchange. When Australian teams play here they get 70 per cent. of club match proceeds and 65 per cent. of representative matches, and benefit by the rate of exchange. They will be here again next August and are certain to want to play a few games in France. Mr. John Wilson informed me that this portion of their visit to Europe will probably be undertaken at the close of their programme in England—i.e., towards the end of January—and it may mean a curtailment of the number of matches in this country.

No less eager are we to welcome the Australians, than they are to see us. There is nothing like a Test match; not even a Cup Final creates the same tense atmosphere.

The interchange of visits between England and Australian teams has made Rugby League football.

THE SMILE OF ANTICIPATION—BROUGHTON RANGERS 1936.
Team and Officials photographed before the Swinton Victory on October 3rd, 1936.



Back Row—Rev. R. ROYLE, B. L. ATKINSON (Director), W. MORGAN, W. ABBOTT, F. WHITCOMBE, H. CAMBRIDGE.
E. THOMPSON, E. SMITH (Trainer), G. JONES.
Front Row Seated—T. SPEDDING (Sec.), F. DAVIES (Masseur), W. STOTT, J. LUCKEY, J. GARVEY (Capt.) G. BUNTER,
J. CUMBERBATCH, B. HOWELLS, CAPT. S. H. HAMPSON, M.C., J.P.
Front Row on Ground—T. KENNY, R. MANNING, W. BARNES



Cuttings from the PRESS



TOO MUCH "SAFETY FIRST."

A dull "Derby" this, for the most part, though strenuous enough and containing much excellent defensive work.

Something more than mere resistance is required to make a match attractive, and neither side seemed to realise this. "Safety first" measures predominated at the expense of enterprise.

The Rangers certainly had the greater number of attacking moves up their sleeve, but the opportunities to put them into effect occurred very rarely.

Swinton enjoyed a striking measure of success in the scrummaging, and the home backs had to a large extent to make their own openings.

Unfortunately for Broughton when the scoring opportunities arrived they failed to profit by them. Lack of decision and cohesion at a critical moment nullified many well-conceived attacks, and one or two members of the side were prone to attempt a little too much when a judicious pass might have yielded a try.

This was particularly noticeable in the second half, when Manning, Garvey, and Abbott in turn were guilty of faulty finishing after the Swinton defence had been outpaced and outpositioned.

The display of the Swinton backs was far too orthodox, Holland alone supplying any variety from the unceasing kick, which merely served to bring out the sterling fielding qualities of Howells, or the slow pass, which left the speedier Broughton backs with ample room to close in and tackle.

Daily Dispatch.

For the second week in succession Broughton Rangers failed to register a try, and defeats in consecutive away matches at Widnes and Liverpool have

pegged back the Belle Vue men in the championship race.

The latest reverse was not unexpected, and as the game went the visitors did well to restrict the margin to nine points. But their display revealed a lack of thrust which, if not quickly rectified, may seriously jeopardise their chances of honours. Inability to command the ball with any regularity from the set scrums is a further retarding influence on the Rangers' play, and it is evident that the services of a first-class hooker must be sought.

The one try of the game came when a Broughton clearance was charged down inside the "25," and a subsequent endeavour by the visitors to make amends by passing was foiled by an interception. This was foiled by Woodcock with the simplest of openings, and Belshaw kicked the goal.

Conspicuous performers for the visitors were Cambridge, Kenny, Garvey, and Howells; while Stanley were splendidly served by Belshaw, Maloney, Glover, Stock, Smith, and Lowe.

Daily Dispatch.

VALIANT RANGERS FOILED.

Huddersfield have their forwards to thank for their victory over Broughton Rangers.

They gave a brilliant second-half display and frustrated all the valiant efforts put forward by the Rangers.

The bad weather conditions made constructive work futile, passes being repeatedly blown astray.

The Rangers were a trifle unlucky to lose.

Battling against the rain and gale in the first half, they kept their line intact for half-an-hour, and at the interval Huddersfield's lead of five points did not appear to be big enough.

The Rangers' forwards dominated

the scrums all through the first half, and it came as a surprise when in the second period the home forwards took strong command.

Broughton at times did storming

tactics, and they came up against a rock-like defence.

The Broughton forwards were excellent, with Bunter, Cambridge, and Manning outstanding.



Letters to the Editor

The Editor will be pleased to have any comments from readers and will do his best to answer all queries.

To the Editor.
Dear Sir,

Having heard such a lot about the "Courtney Goodwill Trophy" which was won by our Tourists during the past summer in Australia, many supporters, including myself, would be very pleased to see the same, and hope you will be able to loan it from the Rugby League to be paraded round the ground at half-time.

Surely the Rugby League are lacking

in their duty to supporters of the game, if this trophy is not loaned to all clubs of the League in rotation to be displayed by each at one home match.

I ask your indulgence in this matter, hoping to see the trophy displayed at some future match at Belle Vue Stadium.

Wishing the team every success,

I remain,
Yours faithfully,

R.V.B. (Prestwich).

WE WOULD POINT OUT TO YOU

A TRY is gained by the player who first puts his hand on the ball on the ground in his opponents' In-Goal, always providing that the said player is not in touch, touch-in-goal, or over the dead ball line.

NOTE.—When a try has been scored, the Referee shall see that the ball is taken out correctly for the kick for goal, or he may delegate the duty to a touch-judge.

If a player bounces or drops the ball from his hands, instead of touching it down, it is not a try.

If an attacking player is checked, but not tackled by an opponent, over the goal-line, and both go to the ground together, and the ball is touched down by both of them at the same time, it is a try.

If an attacking player loses possession of the ball over the goal-line, the ball going in a forward direction, he shall be deemed to have knocked-on, and a drop-out be ordered. A player

who crosses the opponents' goal-line with the ball in his possession, and before grounding it touches the Referee, shall be allowed a try on the spot.

A GOAL is obtained by kicking the ball from the field-of-play over the opponents' cross-bar, whether it touches the cross-bar or the goal-posts or not, except from a punt, a kick-off, a drop-out, or a free kick.

NOTE.—If the ball has gone over the cross-bar, and is then blown back, it is a goal.

If the ball kicked for goal touches in transit an opposing player before going over the cross-bar, it is a goal.

If the ball hits the cross-bar or goal-posts and afterwards rebounds from a defending player over the cross-bar, it is not a goal.

If the player kicks the ball towards his opponents' goal and following up kicks the ball again and it goes over the cross-bar, it is a goal.

L M S RANGERS v. SWINTON

Saturday, October 31st

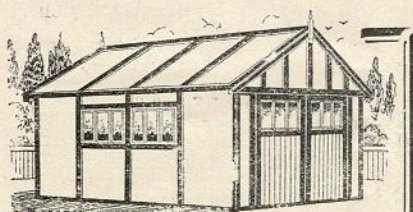
Special Excursion To SWINTON

	p.m.	Return Fares
Manchester (Vic.) depart	2.25	8d.
Salford depart	2.30	7d.
Pendleton (Bd. St.) depart	2.35	5d.
Swinton arr.	2.45	

return at 4.52 p.m. or by any ordinary train

Special Cheap Single Tickets also issued to and from Swinton. Apply at Stations for further details.

—see bills—



YOU SAVE MONEY AND . . .

get longer service from a Holgate Motor House, because of better materials and Craftsmanship. Materials are not skimmed—and every house is thorough in its construction.

Whether of wood, or fire-proof asbestos, a Holgate Motor House will provide dependable protection for the "family transport."

We specialise in all forms of wooden structures, entrance gates and fencing.

Write to-day for FREE list—and particulars of easy payments.

H. J. HOLGATE & Co.

Vere Street,
Eccles New Rd.
SALFORD 5

Tel.: PENdleton 2190

PRICES
from
£8.5.0

KINGS HALL, BELLE VUE BOXING

Monday, Oct. 26th, 1936

At 7-45 p.m.

TWELVE 3-MIN. ROUNDS

JOCK
McAVOY
Versus
CHARLIE
BUNDY

And Supporting Contests.

Note Reduced Prices

NO LIMITS

SINGLES

GEORGE BATTY

ESTABLISHED OVER HALF A CENTURY

Telegrams: "Hoof, Manchester"
92 Market St., Manchester
Turf & Football Commission Agent

Phones:
DEA 3306
" 3522

RACING ALL THE YEAR ROUND
FOOTBALL — FIXED PRICES. 10 TO 1 — 3 HOMES

DOUBLES

AGENTS WANTED—LIBERAL COMMISSION

ETC., ETC.

FIXTURES 1936-7

FIRST TEAM

"A" TEAM

1936	OPPONENTS	Gr	F	A	Re- sult	1936	OPPONENTS	Gr	F	A	Re- sult
Aug. 29	WARRINGTON	H	10	7	W	Aug. 29	WARRINGTON	A	23	18	W
Sept. 2	WAKEFIELD	A	2	0	W	Sept. 2					
5	STREATHAM & MITCHAM	A	18	7	W	5					
12	WIDNES—Lancs. Cup 1st rd.	A	17	12	W	12	SALFORD	H	9	0	W
19	CASTLEFORD	H	18	2	W	19					
24	BARROW—L'cs. Cup 2nd rd.	A	8	9	L	26					
26	WIDNES	A	6	15	L	Oct. 3	SWINTON	A			
Oct. 3	SWINTON	H	4	2	W	10	LIVERPOOL STANLEY	H	2	10	L
10	LIVERPOOL STANLEY	A	0	9	L	17					
17	HUDDERSFIELD	A	2	5	L	24	OLDHAM	A			
24	OLDHAM	H				31	SWINTON	H			
31	SWINTON	A				Nov. 7	LIVERPOOL STANLEY	A			
Nov. 7	STREATHAM & MITCHAM	H				14	WIGAN	H			
14	WIGAN	A				21	LEIGH	A			
21	WAKEFIELD	H				28	LEIGH	H			
28	YORK	A				Dec. 5					
Dec. 5	LEIGH	H				12	OLDHAM	H			
12	OLDHAM	A				19	WIGAN	A			
19	WIGAN	H				25	ROCHDALE	A			
25	ROCHDALE	H				26					
26	SALFORD	A				Jan. 1	ROCHDALE	H			
Jan. 1	ROCHDALE	A				2	ST. HELENS	A			
2	ST. HELENS	H				9					
9	HALIFAX	A				16					
16	HALIFAX	H				23	BARROW	H			
23	BARROW	A				30					
30	YORK	H				Feb. 6	WARRINGTON	H			
Feb. 6	WARRINGTON	A				13					
13	R.L. CUP (1st Round)					20	ST. HELENS RECREATION	A			
20	ST. HELENS RECREATION	H				27	ST. HELENS RECREATION	H			
27	ST. HELENS RECREATION	A				Mar. 6					
Mar. 6	SALFORD	H				13					
13	HULL	A				20	WIDNES	A			
20	WIDNES	H				26					
26	HUDDERSFIELD	H				27	WIDNES	H			
27	CASTLEFORD	A				29	ST. HELENS	H			
29	ST. HELENS	A				April 3	BARROW	A			
April 3	BARROW	H				10					
10	HULL	H				17					
17	LEIGH	A				21	SALFORD	A			
21						24					
24	LIVERPOOL STANLEY	H									