

OLDHAM BREWERY

FAMOUS ALES & STOUT



Can be obtained near the ground at the following houses :-

Farmer's Boy, Waggon & Horses Hotel, Crown Hotel,
Queen's Hotel, Footballers' Arms, Globe Inn,
Highfield Inn, Pullett Inn, King's Arms, Coach & Horses,
Etc., Etc.

ALWAYS ASK FOR

O.B., B.O.B., BLUE SHIELD, ^OR DARBY



TRAVEL STANTON

AUTUMN - WINTER - SPRING - SUMMER

TICKETS . TOURS . PLEASURE CRUISES . VOYAGES

Great Britain, Ireland, The Continent, U.S.A., Canada, Africa, Egypt, Australia,
New Zealand, India, Far East and World-wide by L.M.S. ; L.&N.E. ; G.W. ;
C.L.C. ; S.R. Railways ; AIRWAYS ; ALL STEAMSHIP LINES, Etc.

WE BOOK PIONICS AND DAY TRIPS FOR PARTIES AND INDIVIDUALS

ALL INFORMATION FREE—BOOK IN ADVANCE AT

STANTON: TRAVEL BOOKING OFFICES
112, UNION STREET, OLDHAM
318, Middleton Road, Chadderton, Oldham
and at Manchester, Altrincham, Stockport, Ashton, Stalybridge, Huddersfield, etc

YOU CANNOT DO BETTER

J. Allan Hanson & Son Ltd., Printers, Croftbank Works Cross Street, Oldham

OLDHAM FOOTBALL CLUB

Rugby League

OFFICIAL PROGRAMME

Price

1^d



ON SALE AT ALL HOME MATCHES
OUTSIDE AND INSIDE THE GROUND

IT'S EASY FOR A CHAP TO
KEEP CLEAN WITH THIS NEW
GAS WATER HEATER



You've always longed for really hot water on tap. Now you can have it—at a price you can easily afford. One of our new gas water heaters (we have many sizes in stock) is just the thing for your family. Gas water heaters are automatic—simple—economical—reliable. Gas is the cheapest way of getting hot water on tap, without waiting, without work, without dirt. Pay us a visit today.

ASK ABOUT
Our Special
EASY TERMS
FOR
AUTOMATIC GAS
WATER HEATERS

OLDHAM CORPORATION GAS DEPT:

ERNEST PARRY, Assoc. Inst. Gas E., Commercial Manager.

Showrooms Telephone Offices
CHURCH TERRACE, OLDHAM MAIN 3201 GREAVES ST., OLDHAM

GAS FOR HOT WATER ON TAP

OLDHAM FOOTBALL CLUB

RUGBY LEAGUE CHAMPIONSHIP.

Oldham v. Huddersfield

Saturday, FEB. 5th, 1938.

Kick-off 3-30 p.m.

CLUB CHAT.

Another two league points were lost last Saturday against Liverpool Stanley at Liverpool in a match that was played with the wind blowing a gale from end to end. Our team won the toss and and naturally elected to play with the wind, and it was the old tale of lack of penetration, but one must admit the home team's tackling was magnificent. Our forwards played well to a man and cannot be blamed for the recent defeats. Several times last Saturday the ball was secured from the pack and finished up easily 10 yards behind the pack, hand to hand passing and losing ground. Running across the field, the man with the ball does not need tackling, he only needs shepherding into touch.

OUR VISITORS.

To-day we entertain infrequent but welcome visitors in Huddersfield. Who, in the world of sport, has not heard of our famous visitors? They have an excellent record as cup winners, having won the Rugby League Challenge Cup four time, the Northern Rugby League Cup five times, and the Yorkshire Challenge Cup on eight occasions. They also hold the record of points scored in one season, viz., 1913-14: goals, 169; tries, 286. Total, 1178 points. During this season Rosenfeld, the wing-threequarter, scored 80 tries, a record which stands to-day in our game.

R. BOARDMAN & CO.

ALE AND PORTER BOTTLERS

AND
MINERAL WATER MANUFACTURERS

“SPECIAL”—GRAPE FRUIT CRUSH

Tel. ASH. 2810. Ashton-u-Lyne. Tel. ASH. 2840

Obtainable in the Pavilion.

Tel. MAIn 2906

HOLT, RICHARDSON & CO.

PRINTERS,
STATIONERS
AND
BOOKBINDERS

330, MIDDLETON RD. &
CUTLER ST., OLDHAM

SPORT! RING MAIn:3903

Oldham's Sports House

Will Supply Your
SPORTS REQUIREMENTS,
REPAIRS & REQUISITES,
FOR ALL SPORTS.

THE SPORT CENTRE
P. F. WARD
121 Yorkshire St., Oldham

BRADDOCK'S : RENOWNED RASPBERRY COUGH SYRUP

The Original Cough and Bronchitis Remedy

SOLD IN BOTTLES—

1/3, 3/- & 5/-

ONLY OBTAINABLE AT—

Top of (7a) MANCHESTER STREET
and F. DAYIES, Chemist, 193, HUDDERSFIELD ROAD.

CASINO CINEMA OLDHAM Tel. MAIn 1026

ALL
THE BEST
PICTURES
CHANGED
TWICE
WEEKLY

Be Loyal-Buy British AT COOPER'S

GENT'S
HAT AND CAP
SPECIALISTS

Also TOOTAL TIES, SHIRTS,
SOCKS, PULLOYERS, &c.

20 Curzon St., Oldham

"WHERE YOU WENT WHEN A BOY

VISIT

THE WAGGON & HORSES HOTEL

Tel. MAIn 3015

PERCY G. CARTER - Proprietor.

(Oldham F.C. Committee)

THE HOUSE OF GOOD CHEER AND FOOTBALL CHAT

Wines & Spirits of the Finest Quality
Oldham Brewery's Famous Ales and Stout

(NEXT DOOR TO
SAVOY CINEMA) **Huddersfield Road**

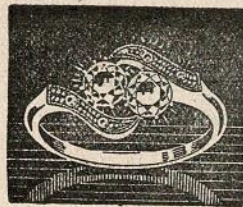
Taylor, full-back, playing his second game in Rugby League, recently signed on from Northampton, County Rugby Union full-back for East Midlands, also a sprinter. Johnson, wing-threequarter, comes from Newport, a boy who knows the way to the line, fast and resolute. Bailey, centre, a recent addition from Newtown, Australia. Madden, centre, previously with Aberavon R.U.F.C., joined his club from the defunct Acton and Willesden. Markham, wing-threequarter, a fast go-ahead winger from Newcastle, Australia. Graham, out-half, joined the club same time as Bailey, an Australian. Royal, scrum-half, previously with Bridgend. Mallinson, forward, a local boy, seen service with Saddleworth. Whitehead, hooker, transferred from our club and is showing good form. Langford, formerly with Leigh and has seen service with Streatham and Mitcham. Shaw is a local forward. Aspinall, formally a loose forward, came to the front with York, secured on transfer from Leeds. Macdonald, a Maori, secured by Huddersfield from Streatham and Mitcham. Cattlin, loose forward, signed this week from our club.

ARRIVAL AND DEPARTURE.

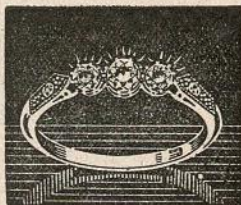
Although much time has been spent in an effort to secure new players to be eligible for the Challenge Cup, only one player has been added to our list, Mick Downey, late of Rochdale Hornets.

A brilliant young centre in Welsh Rugby, a player who, no doubt, would have made good at our game, was interviewed but all the persuasive power and money available would not tempt this young man at present to join our club, however, he will not be lost sight off.

A late effort was made to secure the services of Gordon Innes, the Wigan centre, and the two clubs had agreed upon a transfer fee when up comes along Castleford and offers Innes better playing terms, the same terms to apply to first and second team matches. Our club has never deviated from the policy of paying all players alike, first and second teams; thus another player, and this is not the only case where a player's services have been lost through increased playing terms, and one may say preferential playing terms, being demanded.



DIAMOND
RINGS



YORKSHIRE ST.
OLDHAM

HOWELL
JEWELLERS (LTD.)

AND MUMPS
OLDHAM
Tel. MAI 4802

Tel MAIn 3821.

Equitable Co-operative Society

Limited. GREENACRES HILL, OLDHAM

Reap the benefit of Co-operative trading by becoming a member of the above Society. Whatever your requirements are we are in a position to cater for them.

**PRICE, QUALITY, and SERVICE
WE GUARANTEE.**

For your Social needs, we have the finest suite of rooms in Oldham, which includes a newly decorated Smoke Room, with a new Maple floor.

WE SOLICIT YOUR PATRONAGE.

WILLIAM FORSYTH LTD.

Wine and Spirit Merchants

Bottled Beers and Stouts in Prime Condition.

We Bond and Blend our own Spirits.
We Ship our own Wines,

Bottlers of the Famous FINDLATER'S STOUT.
Proprietors, "MERRY WIDOW" COCKTAIL.

Established 1870.

Tel.
MAIn (Oldham) 4559.

All the Leading
Champagnes and
Liqueurs in stock.

33 and 35 YORKSHIRE STREET, OLDHAM

HARRY TAYLOR, M. P. S.

NATIONAL
HEALTH
INSURANCE
DISPENSING

CHEMIST and DRUGGIST

WINE MERCHANT—Gilbey's and
all Invalid Wines.

None but purest
Drugs used.
Prompt Service.

4, Greenacres Rd., OLDHAM

Telephone: Main 1132.

OLDHAM

Red and White Jerseys.

1. Rees, T. E. 2 GLS
2. Hall, F. TRY
3. Rhydderch, Y. 1TRY
4. Davies, C.
5. Bates, E. E.
6. Downey, M. TRY
7. Irving, W.
8. Ashworth, F. W. (capt.)
9. Brooks, E.
10. Rees, L.
11. Pugh, N.
12. Moore, W. J.
13. Givvons, A.
McNally J. P.

HUDDERSFIELD

Claret and Gold Jerseys.

1. Taylor, W. J.
2. Johnson, W. H.
3. Bailey, R.
4. Madden, D. TRY
5. Markham, R. T. TRY
6. Grahame, T. Sent off
7. Royal, T. H.
8. Sherwood, H. GOAL
9. Whitehead, H.
10. Langford, B.
11. Shaw, J. D.
12. Aspinall, S. A.
14. MacDonald, J.
Cattlin, R.

HT.
3.7
Lost
8-13

Referee:—Mr. T. MARLEY, of Wakefield.

Touch Judges:—Messrs. W. Clitheroe & W. Ainscough.

FRIENDSHIP HOTEL

Opposite Train Depot. ::
MUMPS (Fully Licensed)

Near Mumps Station.
Tel. Main 4980.

You must Visit the Popular **FRIENDSHIP LOUNGE**
For ENTERTAINMENT with Refinement Nightly. Comfortable and Commodious

JAMES S. PARKINSON,
Headquarters - **OLDHAM FOOTBALL CLUB.** Proprietor

WHEN IN OLDHAM VISIT THE

GRAPES HOTEL

WILSON'S SPARKLING ALES
always in best of condition.

WINES AND SPIRITS

THE Popular House of
Call for first-class
Concerts nightly.

YORKSHIRE STREET

B. BOOTH, Proprietor.

TEL. MAIN 1115.

So Bob Cattlin has gone to Huddersfield, much to our regret and also to his. He was quite satisfied with his lot with us. It was not our seeking that this player was put on the transfer list, this being brought about through a sad bereavement in the family. We all hope that a change of town and surroundings will help to alleviate the sadness which has come to Cattlin and his wife.

RETURN OF THE AUSTRALIANS.

The Australians have now returned to their English headquarters at Ilkley from their French tour, and will now prepare for home, sailing on February 12th. They will, however, be entertained by the Rugby League to a farewell dinner in Leeds on Wednesday next. This touring team of 1937-8 Kangaroos appear to have been blessed with ill-luck all through. Their arrival in England was very late, inasmuch as they stepped off the boat on to the field for their first match, and one must admit extremely bad arrangements of fixtures was made for this party. Injuries have robbed the team of some of its best players and it was evident that efficient reserve talent was not carried. However, one is always wiser after the event and I do hope



"FOR REAL PLEASURE"

I prefer C.W.S. BEATALL FLAKE
It's a superior rich dark Flake
manufactured from specially
selected leaf tobaccos.

BEATALL FLAKE

TOBACCO

Per 8d. Oz.

From the

OLDHAM INDUSTRIAL CO-OPERATIVE SOCIETY

BLUE BIRD MOTORS

MOTOR COACH TRANSPORT CONTRACTORS
PROPRIETORS TO OLDHAM FOOTBALL CLUB

BOOK YOUR CHAIR FOR 'AWAY' MATCHES

Tel. FAI 1020

HOLLINWOOD

that the next touring side from Australia to this country will be favoured with better results and arrangements as these tours mean everything to our game of Rugby League.

OUR NEW PLAYER.

Michael Downey, born Newport, Monmouthshire, 1912. Has played Rugby since going to school, a school and playing mate of Alex Givvons, in the Holy Cross School team, later Newport Hibernians and Pill Harriers, from which latter club he joined Rochdale Hornets. Height, five foot 11½ inches; weight, 12 stone two pounds.

CHALLENGE CUP — FIRST ROUND.

We were lucky once again to be drawn at home, this time against Yorkshire foes—Batley. This match should produce a real cup tie atmosphere as Batley are by no means doing badly this season, having brought off some good performances both at home and away. Reserved seat tickets for the enclosure and "E" stand are now on sale, price 3s. each, inclusive of entertainment tax. Ordinary league match prices will be charged to other parts of the ground; unemployed half price to ground on production of card.

THE MAYOR'S APPEAL

Oldham Royal Infirmary

URGENTLY NEEDS

£40,000

for EXTENSIONS.

Over 200 Ailing People are
waiting for Beds.

Please help all you can

COMING EVENTS.

NEXT HOME MATCH.

February 19th, 1938, 1st, Round Rugby League Challenge Cup,
v. **BATLEY**, at Watersheddings, Kick-off 3-30 p.m.

SATURDAY, FEB. 5th.

HALF-TIME SCORES.

The Half-time Scores in the Matches given below will be shown
on the Score Board immediately they are received.

A SALFORD CASTLEFORD	D LIVERPOOL STANLEY WARRINGTON
B WIGAN ST. HELENS RECS.	E LEIGH SWINTON
C WIDNES BARROW	F HARTLEPOOLS U. OLDHAM ATHLETIC

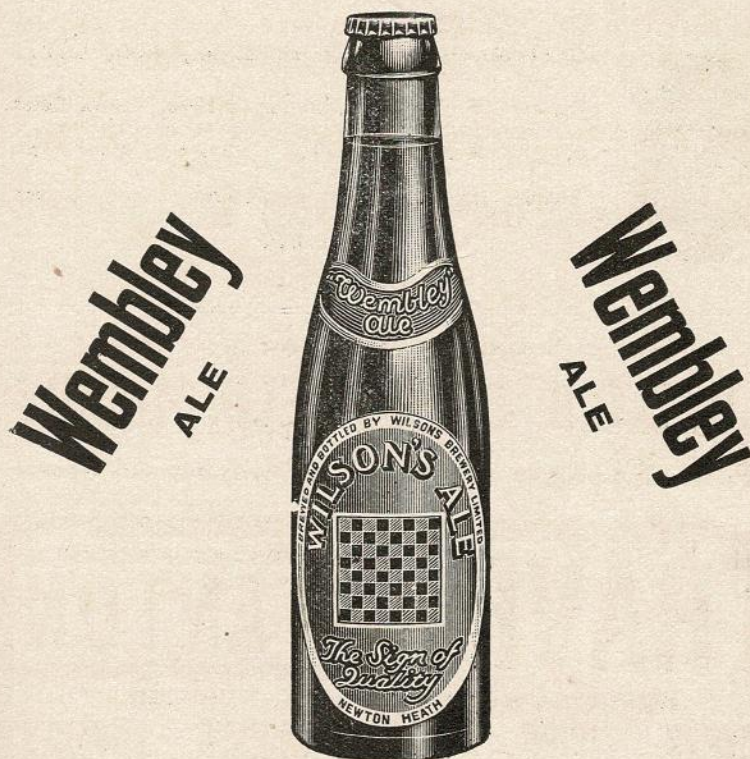
MARKET HOTEL, CURZON STREET, OLDHAM

HERMAN HILTON, Proprietor. Tel. MAIn 4987.
(Ex-Captain Oldham F.C., English International and Australasian Tourist)

Concerts every Friday, Saturday, and Monday, at 8 o'clock.

WINES AND SPIRITS OF THE FINEST QUALITY
OLDHAM BREWERY'S FAMOUS ALES & STOUT

Wilson's Brewery Ltd.



IS DISTINCTIVE.

ADDS CONSIDERABLY TO YOUR
ENJOYMENT OF THE GAME.

Brewed and Bottled by—

WILSON'S BREWERY LIMITED
Newton, Heath - MANCHESTER