

OLDHAM BREWERY

Famous Ales and Stout on Draught

O.B., DARBY, BASS, WORTHINGTON and
GUINNESS IN BOTTLE



Can be obtained near the ground at the following houses:

Farmer's Boy, Waggon and Horses Hotel, Crown Inn,
Queen's Hotel, Footballers' Arms, Globe Inn, Highfield
Inn, Pullett Inn, King's Arms, Coach & Horses, etc., etc.

Stanton's for Travel

- Rail Tickets
 - Steamship Tickets
 - Air Tickets
- to all parts of the world by ALL LINES
- British & Continental Tours
 - Party Outings
 - Inclusive arrangements for Rugby
League Cup Final at Wembley
 - Baggage & Personal Insurance, etc.

L. R. STANTON

112, UNION STREET, OLDHAM (Tel. MAIN 1066)
and at 318, Middleton Road, Oldham

Branches at Manchester, Ashton-u-Lyne, Stockport, Altrincham, Huddersfield, Stalybridge, etc.

OLDHAM FOOTBALL CLUB

Rugby League

OFFICIAL
PROGRAMME

Price

2d.



ON SALE AT ALL HOME MATCHES
OUTSIDE AND INSIDE THE GROUND

"I score points when it comes to water heating"

—Says Mr. Therm



Gas water heaters mean hot water on tap all through the twenty-four hours. There's no work and no waiting. And it's at a price you can easily afford.

We offer attractive easy terms for the purchase of automatic water heaters and the heater itself will make sure that there is no waste. You only use gas when you use hot water.

You'll find just the right size and type of heater for your family at the Gas Showrooms. Pay us a visit to-day, or send a post card for a representative to call and explain how simply and reliably gas can solve your hot water problem.

MAKE COMFORT YOUR GOAL WITH GAS

OLDHAM CORPORATION GAS DEPT.

Showrooms: MARKET PLACE, OLDHAM. Telephone MAIn 3312

Offices: GREAVES STREET, OLDHAM. Telephone MAIn 3201

OLDHAM FOOTBALL CLUB

RUGBY LEAGUE CHAMPIONSHIP

OLDHAM v. ST. HELENS

SATURDAY, NOVEMBER 2nd, 1946.

KICK-OFF 3-0 P.M.

CLUB CHAT

ANALYSING THOSE "OFF-DAYS" Once more we are at home and hoping that luck will come our way to-day for four defeats in a row and three of these at home require some explaining.

Thus, early in the season there have been unexpected victories and defeats that have set us wondering. Our team has played badly when they were expected to perform brilliantly; and the same team has shown great form one match and poor another. How are these to be explained – and avoided? Perhaps it would be as well to dwell a moment on the last point – how are they to be avoided?

Naturally, we want the team with which we are associated to win, and however much we pride ourselves upon the sportsmanship which accepts defeat and acknowledges the skill of the victors, there is bound to be some measure of disappointment if defeat has been due to bad play.

How is defeat to be avoided and how are we to avoid bad play? We are not so much concerned that the team should lose a match, but we are greatly concerned if they play poor football. So we try to find the explanation of these unexpected reverses. How does it happen that a whole team or section of a team are under a blight altogether?

R. BOARDMAN & CO.

ALE AND PORTER BOTTLERS

— AND —

MINERAL WATER MANUFACTURERS

"Special" – GRAPE FRUIT CRUSH

Ashton-u-Lyne

Obtainable in the Pavilion

Telephone ASH 2310

BRIERLEY'S

BUY A PIE WITH A NAME



A. BRIERLEY

202 MANCHESTER STREET

OLDHAM

BRADDOCK'S *Renowned* RASPBERRY COUGH SYRUP

The Original Cough and Bronchitis Remedy

SOLD IN BOTTLES 1/5, 3/4 & 5/7

Only obtainable at

Top of (7a) 193 Huddersfield 9 Market St. 92 Burnley Lane
Manchester St. Road, Oldham Royton Chadderton

Are you a member of the

**SUPPORTERS'
CLUB**

?

*If not, JOIN TO-DAY
at the Canteens*

Be Loyal—Buy British

AT

COOPER'S

GENT.'S HAT & CAP SPECIALISTS

Also Tootal Ties,
Shirts, Socks, Pullovers, &c

20 Curzon St., Oldham

"WHERE YOU WENT WHEN A BOY"

CIVILITY COURTESY CLEANLINESS

GREY HORSE INN

UNION STREET (opposite Grosvenor Cinema)

Proprietor: ROWLAND B. JONES

ALL GLASSES STERILIZED
IDEAL FOR PARTIES

ROBINSON'S SPARKLING ALES

In every case, no doubt, there are psychological as well as physical causes for the team to produce their best form and, of course, one of the physical causes may be the strength of the opponents, but how are we to explain the fact that a team can play bad football against opponents who are showing no outstanding powers?

If there is a failure we must look to some personal factor for an explanation of the lack of consistency; for my own part I am almost invariably made to think that the root of the trouble is in a lack of physical fitness.

It may be due to the fact that a man is undertrained or over-trained, or it may be due to flying in the face of common sense, which teaches the athlete that he must have a sufficiency of sleep and that he must be temperate in all things.

A man ought to be in perfect training and he ought to do his duty to his side by taking his full measure of rest, and eating and drinking wisely.

It sometimes happens, of course, that a player is troubled in mind, he may be burdened by domestic griefs, and sometimes such things have an overwhelming power, but if a man is in perfect health and perfectly trained, I believe it possible for him, once the game starts, to banish thoughts of trouble and to concentrate on the game. I believe that if we could trace these puzzling variations of form to their source we should find that they are due to the fact that when the players went on the field they were not in that perfect physical trim which is necessary if men are to do justice to their powers. It is this which makes devotion to training and the cultivation of fitness so important.

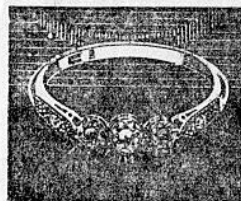
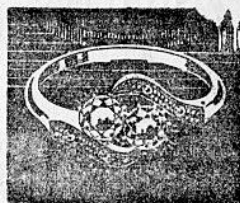
THE SEARCH FOR PLAYERS Great activity prevails in South Wales amongst Rugby League agents, who appear to be redoubling their efforts to spot the required stars for our game. A few club officials were in South and West Wales last

Joseph Howell & Sons

Jewellers since 1875

Telephone MAIn 4802

Rings & Watches



8 & 10 MUMPS
OLDHAM

For the **Piping** Days of Peace

AFRIKANDER

Britain's Most Famous Mixture

PER **2/3** OZ.

Telephone MAI (Oldham) 4559

William Forsyth Ltd.

Wine & Spirit Merchants

Ale & Porter Bottlers

OUR POLICY:

In the early days of the war we resolved on a Policy—

“To ration our supplies as fairly as we possibly could and to refrain from placing our stocks on the market and so obtain enhanced prices, but to maintain a level of prices most favourable to the customer.”

WE TRUST WHEN NORMAL CONDITIONS RETURN OUR POLICY WILL NOT BE FORGOTTEN

RUGBY LEAGUE REPORTS

FOR ENTHUSIASTS
BY ENTHUSIASTS

For the fullest and most knowledgeable accounts of Rugby League events—and for the most graphic and accurate reports covering all aspects of British Sport

SEE THE DAILY MAIL

RIGHT Red & White **OLDHAM** Jerseys LEFT

1—GRIFFITHS, W.
5—LARGE, E. 4—HARRIS, N. 3—GUMMER, G. 2—DOUGHTY, V. J.
INGLESFIELD, S.
7—SMITH, R. A. 6—KERWICK, E.
ANDLER, H. D.
13—PHILLIPS, D. V. 15
11—SHAW, J. D. 12—PUGH, N.
8—OGDEN, H. 9—FROST, W. 10—BROOKS, E.

Referee—
Mr. W. STOCKLEY, Leigh



Linesmen—
T. Taylor and S. Inman

10—PILKINGTON 9—FISHWICK 8—ROUGHEDGE
12—JONES 11—LEYLAND
13—MILLS
7—BALL 6—TRACEY 22
2—GREENALL 3—BOWEN 4—SCOTT 5—DOYLE
1—PIMBLETT

LEFT White **ST. HELENS** Jerseys RIGHT

FRIENDSHIP HOTEL

Opposite Tram Depot

(Fully Licensed)

Near Mumps Station

You must
visit the popu-
lar...

**FRIENDSHIP
LOUNGE**

MUMPS

TELEPHONE MAIn 4980

Manager - EDWIN P. FOSTER

Headquarters of Oldham Football Club

For...
ENTERTAINMENT
with Refinement
Nightly.

**COMFORTABLE and
COMMODIOUS**

WHEN IN OLDHAM VISIT THE

Tel. MAIn 1115

Grapes Hotel

B. BOOTH, Proprietor

THE POPULAR HOUSE OF CALL FOR FIRST-CLASS CONCERTS NIGHTLY

YORKSHIRE STREET, OLDHAM

WILSON'S SPARKLING ALES always in best of condition.

WINES AND SPIRITS

Saturday taking a look-over of the recommendations. No doubt, this next few weeks will see more migrations from this area to our game.

We are interested in one or two players, but up to the present nothing definite has been done as further observation is being taken, and added to the difficulty of securing suitable employment and transfers from controlled work, and also the great problem of the housing.

PUBLICITY Many letters have been received at The Rugby League Headquarters in Leeds from supporters of our game complaining of the lack of publicity given to the Rugby League by the B.B.C. and the Press.

This is very well as far as it goes, but my advice to all our supporters who desire to see our game given more press publicity and announcements and talks by the B.B.C. is to write to the B.B.C. and to your own particular favourite newspaper for more Rugby League News.

It's up to you friend to just drop a note to the authorities at the B.B.C. and to your newspaper proprietors asking for some news about OUR game, and I am sure that the officials in charge



For A Real Good Meal

AFTER THE MATCH VISIT THE

CO-OPERATIVE CAFE

Popular Teas at Popular Prices

MARKET PLACE Tel. MAIn 2116

Oldham Industrial
CO-OPERATIVE SOCIETY LTD

Phone MAIn 1779

MANN'S Furnishing Stores

WRIGHT STAFFORD
GEORGE STAFFORD

RENOWNED FOR **VALUE** AND **SERVICE**

11, 13 & 15 Huddersfield Road
OLDHAM

of all the news for such publication will be only too pleased to hand same over to the benefit of all concerned. Our Rugby League game is a game for every class and all classes to play. It is not a caste game and we cater for all and sundry and it is only right that we should have a place in the sporting world.

WEMBLEY Our Supporters' Club are running a trip to Wembley for the Rugby League Challenge Cup Final to be played on May 3rd, 1947. The Railway Company have promised all assistance in the way of a special train and all who intend to make this journey should apply for further particulars to the Hon. Treasurer of the Supporters' Club, Mr. John Hollingsworth, 22, Garnet Street, Oldham.

CASUALTY We are still in bad luck regarding injuries to LIST players, and the latest addition is Frank Wilkinson, who received a broken fore-arm whilst playing against Belle Vue Rangers "A" at Watersheddings on Saturday last.

Vincent Kenny has a bad shoulder injury, and happily there is nothing broken, but he will be out of the game a few weeks. Tom Ayres, after a broken bone in the ankle, has now resumed light training, and expects to be fit in two weeks. Les Thomas is still suffering from a shoulder injury, and it will be a little time before he is able to resume. Ken Blan is slowly recovering from a rupture, but will be out of the game for some time. Fred Elson is still awaiting admittance to hospital for the removal of a cartilage. S. Griffith is troubled with torn ligaments of the knee, and treatment and rest is required for recovery.

COMING EVENTS

Saturday, November 9th, 1946

Oldham "A" v. Leigh "A"

at Watersheddings. Kick-off 3-0

Saturday, November 16th, 1946

Oldham v. Castleford

at Watersheddings. Kick-off 2-45

Phone MAIN 2759

R.A.C. Appointed

GREAVES ARMS HOTEL

(FULLY LICENSED)

RESIDENTIAL AND COMMERCIAL

OPPOSITE TOWN HALL

YORKSHIRE STREET

Luncheons, Teas, etc.

Wedding Breakfasts

Dinner Parties

VINCENT SNAPE, Proprietor

OWN PARKING GROUND

HALF-TIME SCORES

The Half-time Scores in the Matches given below will be shown on the Score Board immediately they are received—

A

D

B

E

C

F

NOTE—It is desired that the Advertisers in this programme should receive every support from the Members of the Oldham Football Club.

CROOKES & PEARS LTD.

REGISTERED JOINERS AND BUILDING CONTRACTORS

Shop and Office Fittings, Portable Buildings and Garages, Mill Work

Have Your Houses MODERNISED

LICENSED WORK

Flush Doors, Pelmet and Curtain Rails, Modern Postal Knockers and Door Fittings, Bathroom and Fireplace Alterations. Repairs to Roofs and Floors.

ALL CLASSES OF PROPERTY REPAIRS

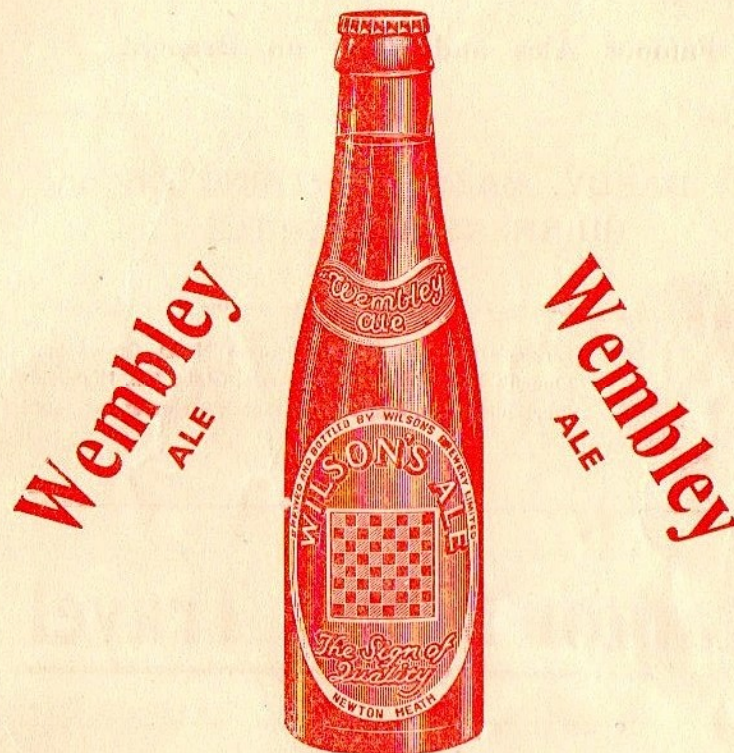
WRITE OR ENQUIRE—

Windows Re-Corded. Garden and Yard Gates. Repairs to Furniture. All work executed by Skilled Craftsmen. ESTIMATES FREE

9 BRIDSON ST., OLDHAM

or 19 ABBOTSFORD ROAD

Wilson's Brewery Ltd.



IS DISTINCTIVE

ADDS CONSIDERABLY TO YOUR ENJOYMENT OF THE GAME

Brewed and Bottled by—

WILSON'S BREWERY LTD.

NEWTON HEATH. MANCHESTER