

OLDHAM BREWERY

Famous Ales and Stout on Draught

O.B., DARBY, BASS, WORTHINGTON and
GUINNESS IN BOTTLE



Can be obtained near the ground at the following houses:

Farmer's Boy, Waggon and Horses Hotel, Crown Inn,
Queen's Hotel, Footballers' Arms, Globe Inn, Highfield
Inn, Pullett Inn, King's Arms, Coach & Horses, etc., etc.

Stanton's for Travel

- Rail Tickets
 - Steamship Tickets
 - Air Tickets
- to all parts of the world by ALL LINES
- British & Continental Tours
 - Party Outings
 - Inclusive arrangements for Rugby
League Cup Final at Wembley
 - Baggage & Personal Insurance, etc.

L. R. STANTON

112, UNION STREET, OLDHAM (Tel. MAIN 1066)
and at 318, Middleton Road, Oldham

Branches at Manchester, Ashton-u-Lyne, Stockport, Altrincham, Huddersfield, Stalybridge, etc.

OLDHAM FOOTBALL CLUB

Rugby League

OFFICIAL
PROGRAMME

Price

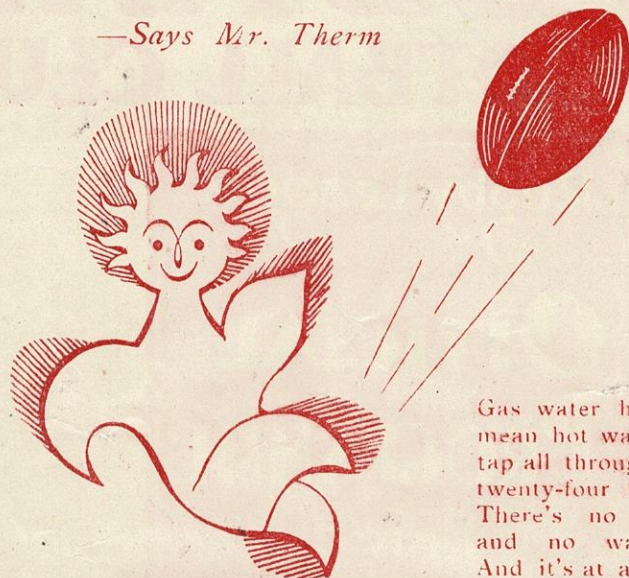
2d.



ON SALE AT ALL HOME MATCHES
OUTSIDE AND INSIDE THE GROUND

"I score points when it comes to water heating"

—Says Mr. Therm



Gas water heaters mean hot water on tap all through the twenty-four hours. There's no work and no waiting. And it's at a price you can easily afford.

We offer attractive easy terms for the purchase of automatic water heaters and the heater itself will make sure that there is no waste. You only use gas when you use hot water.

You'll find just the right size and type of heater for your family at the Gas Showrooms. Pay us a visit to-day, or send a post card for a representative to call and explain how simply and reliably gas can solve your hot water problem.

**MAKE COMFORT YOUR GOAL WITH
GAS**

OLDHAM CORPORATION GAS DEPT.

Showrooms: MARKET PLACE, OLDHAM. Telephone MAIN 5312

Offices: GREAVES STREET, OLDHAM. Telephone MAIN 3201

OLDHAM FOOTBALL CLUB

RUGBY LEAGUE CHAMPIONSHIP

OLDHAM v. SWINTON

XMAS DAY, DECEMBER 25th, 1946.

KICK-OFF 2-30 P.M.

CLUB CHAT

To all our
Readers,
Supporters,
Players, and
Friends we
extend The
Compliments
of the
Season

It is with pleasure we welcome our old friends from Swinton, who have again agreed to renew our time-honoured matches of Xmas day at Oldham and Good Friday at Swinton. Many are the battles and glorious games of the past between the two teams, but why delve into the past, what of the future? We look forward to even better games and the glory of the Rugby League game.

Both clubs are building up teams as a result of the period of war, and this must take time, good players are hard to find of the required standard to place in the first teams, and time alone will tell of the efforts made by clubs of their acquisitions.

May we congratulate two of our players in being selected to play for Lancashire against Cumberland, at Barrow, on January

R. BOARDMAN & CO.

ALE AND PORTER BOTTLERS

— AND —

MINERAL WATER MANUFACTURERS

"Special"—GRAPE FRUIT CRUSH

Ashton-u-Lyne

Telephone ASH 2310

Obtainable in the Pavilion

BRIERLEY'S

BUY A PIE WITH A NAME



A. BRIERLEY

202 MANCHESTER STREET
OLDHAM

BRADDOCK'S *Renowned* RASPBERRY COUGH SYRUP

The Original Cough and Bronchitis Remedy

SOLD IN BOTTLES 1/5, 3/4 & 5/7

Only obtainable at

Top of (7a) 193 Huddersfield 9 Market St. 92 Burnley Lane
Manchester St. Road, Oldham Royton Chadderton

JOE LOUIS

BY HIMSELF

Revealing many facts hitherto undisclosed about the life and rise to world fame of the greatest boxer of all time.

EXCLUSIVELY IN THE

**SUNDAY
EMPIRE NEWS**

Be Loyal—Buy British

AT

COOPER'S

GENT.'S HAT & CAP SPECIALISTS

Also Tootal Ties,
Shirts, Socks, Pullovers, &c.

20 Curzon St., Oldham

"WHERE YOU WENT WHEN A BOY"

CIVILITY COURTESY CLEANLINESS

GREY HORSE INN

UNION STREET (opposite Grosvenor Cinema)

Proprietor: ROWLAND B. JONES

ALL GLASSES STERILIZED
IDEAL FOR PARTIES

ROBINSON'S SPARKLING ALES

4th, 1947, Ernest Large and Tom Ayres. Large has played several times for Lancashire, but this is the first honour for Ayres.

Large joined this club from St. Helens Recreation on 1st August, 1939, and Ayres from Vickers Sports Club on 18th August, 1945, as a centre, but has now developed as a loose forward with County Honours. He still lives and works in Barrow (owing to the Essential Works Order).

May they both have a successful match.

It is with pleasure we announce that a splendid donation of £200 has been received from our Supporters' Club.

Mr. Harry Sutcliffe, President of the Supporters' Club, presented the cheque on behalf of his committee in a very pleasing speech to the committee of the Football Club at their meeting on Monday, 16th December, 1946.

Money is urgently needed to pay for the rebuilding of the football stands and the above gift comes at an opportune time. The thanks of all will go to the Supporters' Club for their continued financial support.

NEW PLAYERS Our new centre, Joseph B. Mahoney, appears to have created a very favourable impression in his first game for our club. It was unfortunate that he sustained a painful thigh injury during the game which appeared to nullify his movements. However, we hope to see him hit the headlines and show his undoubted ability as a centre when playing for his late club, Cardiff.

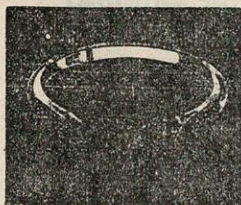
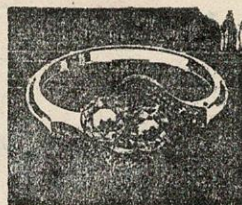
The committee are still after the required star players, and subject to The Essential Works Order being complied with, as regards transfer of work to this district, a further signing may be expected.

Joseph Howell & Sons

Jewellers since 1875

Telephone MAIn 4802

Rings & Watches



8 & 10 MUMPS
OLDHAM

For the **Piping** Days of Peace

AFRIKANDER

Britain's Most Famous Mixture

PER **2/3** OZ.

Telephone MAI (Oldham) 4559

William Forsyth Ltd.

Wine & Spirit Merchants

Ale & Porter Bottlers

OUR POLICY:

In the early days of the war we resolved on a Policy—

“To ration our supplies as fairly as we possibly could and to refrain from placing our stocks on the market and so obtain enhanced prices, but to maintain a level of prices most favourable to the customer.”

WE TRUST WHEN NORMAL CONDITIONS, RETURN OUR POLICY WILL NOT BE FORGOTTEN

RUGBY LEAGUE REPORTS

FOR ENTHUSIASTS
BY ENTHUSIASTS

For the fullest and most knowledgeable accounts of Rugby League events—and for the most graphic and accurate reports covering all aspects of British Sport

SEE THE DAILY MAIL

RIGHT

Red & White

OLDHAM

Jerseys

LEFT

- 1—GRIFFITHS, W.
2—INGLESFIELD, S. 3—HARRIS, N. 4—MAHONEY, J. B. 5—LARGE, E.
(Capt.) GUMMER, G.
6—KENNY, V. *Smith*
7—REES, D. *THOMAS, LES.*
13—AYRES, T.
11—SHAW, J. D. 12—PUGH, N.
PHILLIPS, D. V.
8—OGDEN, H. 9—BROOKS E./FROST, W. 10—MOORE, W. J.

Referee—
MR. A. HOLBROOK
of Warrington



Touch Judges—
R. S. HESKETH
and H. HOLLAND

- 10—GARNER, F. 9—WHITTAKER, L. 8—HUGHES, G.
12—PALIN, H. 11—STODDART, J. (Capt.)
13—SYDDALL J.
7—ROPER, A. 6—WARHAM, J.
5—WILLIAMS, W. E. 4—WARRY, V. 3—TURNER, K. 2—LEWIS, R.
1—TURNER, E. G.

LEFT

Blue

SWINTON

Jerseys

RIGHT

FRIENDSHIP HOTEL

Opposite Tram Depot

(Fully Licensed)

Near Mumps Station

You must
visit the popu-
lar . . .

**FRIENDSHIP
LOUNGE**

MUMPS

TELEPHONE MAIn 4980

Manager - EDWIN P. FOSTER

Headquarters of Oldham Football Club

For . . .

ENTERTAINMENT
with Refinement
Nightly.

**COMFORTABLE and
COMMODIOUS**

WHEN IN OLDHAM VISIT THE

Tel. MAIN 1115

Grapes Hotel

B. BOOTH, Proprietor

THE POPULAR HOUSE OF CALL FOR FIRST-CLASS CONCERTS NIGHTLY

YORKSHIRE STREET, OLDHAM

WILSON'S SPARKLING ALES always in best of condition.

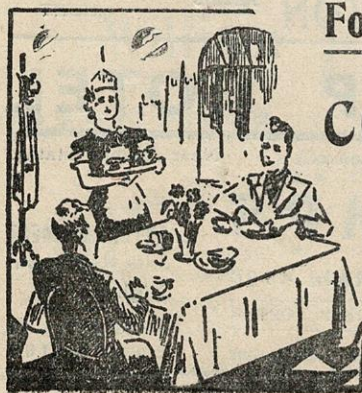
WINES AND SPIRITS

One must not forget also that one of our coming star centres of pre war is now due for demobilization, William Mitchell. This player has youth on his side and we expect to have his valuable help when he states himself fit for a game.

LAWS OF THE GAME The Rules Committee of The Rugby Football League are to hold two exhibition games, one in Yorkshire and one in Lancashire, for the trying out of new ideas with regard to the laws of the game, which we hope will be for the better and clearer understanding for the onlooker and players.

One of the greatest drawbacks of the game to-day is "play the ball rule." It has its good points and also bad ones, there is also the unwillingness of many players to carry out the rule as stated in the laws of the game.

Players should get up with the ball in their hands and then drop it. How often do we see, time after time, players hold the ball on the ground until they have regained their feet, and this must tempt opponents to kick whilst he is lifting the ball from



For A Real Good Meal

AFTER THE MATCH VISIT THE

CO-OPERATIVE CAFE

Popular Teas at Popular Prices

MARKET PLACE

Tel. MAIN 2116

Oldham Industrial
CO-OPERATIVE SOCIETY LTD

Phone MAIN 1779

MANN'S Furnishing Stores

WRIGHT STAFFORD
GEORGE STAFFORD

RENOWNED FOR **VALUE** AND **SERVICE**

11, 13 & 15 Huddersfield Road
OLDHAM

the ground. It is a striking thing that all alterations to rules are carried out correctly in the early stages, only to be completely ignored later.

The rule of "play the ball" was interpreted correctly when introduced, but appears to be ignored by some players and referees now, an infringement occurs and the game is held up, much to the annoyance of the spectators.

FORWARD PLAY As one who has witnessed several matches other than that of our own club, I have noticed the shortcomings of several forwards. Most forwards will persist in regarding the ball as their own. Some never appear to realize that a bull-headed rush at an opponent whilst in possession of the ball testifies to their courage, but not to their skill. The enthusiasm is there alright, but they are apt to forget the speedy backs on their side. No matter how strong they may be, they are only giving half their value if persisting in butting their way through a number of opponents, with the result they are overpowered and the entire value of their effort is nullified, and more often than not a stoppage occurs in the game. Forwards should get rid of the ball before they are tackled and should realize that there is no infringement against a player who is falling passing a ball before it has touched the ground.

There is no reason why every man in a team should not know when to pass and, if he does not, let him pass without knowing it.

Patronize our Home Matches and Help us to get "Star" Players

Saturday, December 28—FEATHERSTONE ROVERS at Watersheddings
Kick-off 2-30 p.m.

New Year's Day—ROCHDALE HORNETS at Watersheddings
Kick-off 2-30 p.m.

Phone MAIN 2759

R.A.C. Appointed

GREAVES ARMS HOTEL

(FULLY LICENSED)

RESIDENTIAL AND COMMERCIAL

OPPOSITE TOWN HALL

YORKSHIRE STREET

Luncheons, Teas, etc.

Wedding Breakfasts

Dinner Parties

VINCENT SNAPE, Proprietor

OWN PARKING GROUND

HALF-TIME SCORES

Thomas Large 1 Harris 2

Gribbiths 1 goal

Owing to no publication of newspapers,
to-day, in conjunction with the Press,
we are unable to give half-time scores.

NOTE—It is desired that the Advertisers in this programme should receive every support from the Members of the Oldham Football Club.

CROOKES & PEARS LTD.

REGISTERED JOINERS AND BUILDING CONTRACTORS

Shop and Office Fittings, Portable Buildings and Garages, Mill Work

Have Your Houses MODERNISED

LICENSED WORK

Flush Doors, Pelmet and Curtain Rails, Modern Postal Knockers and Door Fittings, Bathroom and Fireplace Alterations. Repairs to Roofs and Floors.

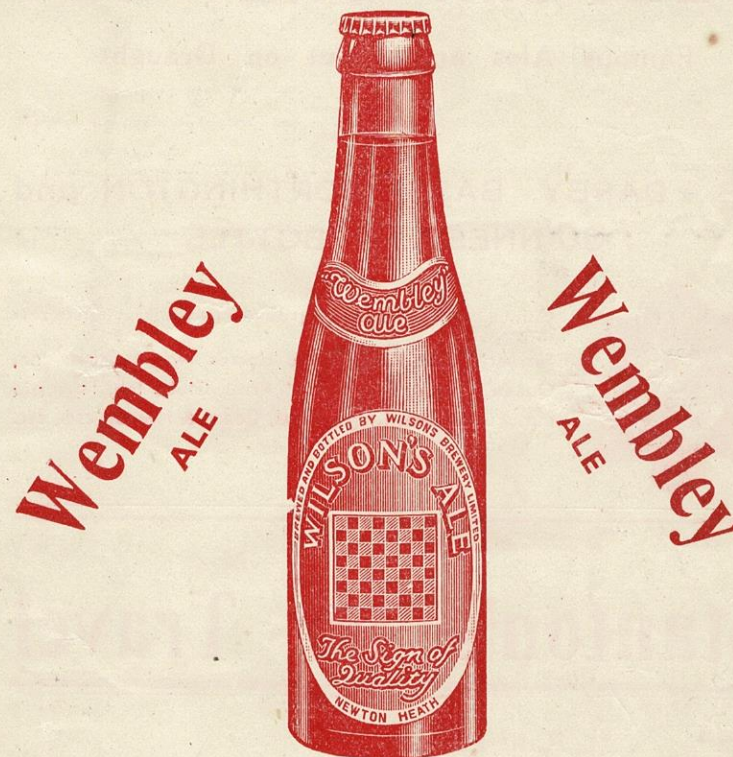
ALL CLASSES OF PROPERTY REPAIRS

WRITE OR ENQUIRE—

Windows Re-Corded. Garden and
Yard Gates. Repairs to Furniture
All work executed by Skilled
Craftsmen. ESTIMATES FREE

9 BRIDSON ST., OLDHAM
or 19 ABBOTSFORD ROAD

Wilson's Brewery Ltd.



IS DISTINCTIVE

ADDS CONSIDERABLY TO YOUR ENJOYMENT OF THE GAME

Brewed and Bottled by—

WILSON'S BREWERY LTD.

NEWTON HEATH. MANCHESTER