

# OLDHAM BREWERY

Famous Ales and Stout on Draught

O.B., DARBY, BASS, WORTHINGTON and  
GUINNESS IN BOTTLE



Can be obtained near the ground at the following houses:

Farmer's Boy, Waggon and Horses Hotel, Crown Inn,  
Queen's Hotel, Footballers' Arms, Globe Inn, Highfield  
Inn, Pullett Inn, King's Arms, Coach & Horses, etc., etc.

## Stanton's for Travel

- Rail Tickets
  - Steamship Tickets
  - Air Tickets
- to all parts of the world by ALL LINES
- British & Continental Tours
  - Party Outings
  - Inclusive arrangements for Rugby  
League Cup Final at Wembley
  - Baggage & Personal Insurance, etc.

**L. R. STANTON**

112, UNION STREET, OLDHAM (Tel. MAIN 1066)  
and at 318, Middleton Road, Oldham

Branches at Manchester, Ashton-u-Lyne, Stockport, Altrincham, Huddersfield, Stalybridge, etc.

# OLDHAM FOOTBALL CLUB

Rugby League

OFFICIAL  
PROGRAMME

Price

2d.



ON SALE AT ALL HOME MATCHES  
OUTSIDE AND INSIDE THE GROUND



**"I score points when it comes to water heating"**

*—Says Mr. Therm*



Gas water heaters mean hot water on tap all through the twenty-four hours. There's no work and no waiting. And it's at a price you can easily afford.

We offer attractive easy terms for the purchase of automatic water heaters and the heater itself will make sure that there is no waste. You only use gas when you use hot water.

You'll find just the right size and type of heater for your family at the Gas Showrooms. Pay us a visit to-day, or send a post card for a representative to call and explain how simply and reliably gas can solve your hot water problem.

**MAKE COMFORT YOUR GOAL WITH  
GAS**

**OLDHAM CORPORATION GAS DEPT.**

Showrooms: MARKET PLACE, OLDHAM. Telephone MAIn 5312

Offices: GREAVES STREET, OLDHAM. Telephone MAIn 3201

## OLDHAM FOOTBALL CLUB

RUGBY LEAGUE CHAMPIONSHIP

### OLDHAM v. LEIGH

SATURDAY, MAY 17th, 1947.

KICK-OFF 3-30 P.M.

#### CLUB CHAT

To-day, we entertain Leigh in a postponed League fixture, and we must congratulate our opponents on their showing in their first season of post-war football.

They have, no doubt, had a good season from a playing point of view and up to last Saturday's game were on the fringe of finishing in the first four clubs in The Northern Rugby League. Anything may happen yet regarding who finishes third and fourth club and we hope to-day to be victors and improve our own position by ending in the fifth or even fourth Lancashire club when the final league table is made.

However, Leigh may have something to say about this and we hope that to-day's game will be as entertaining and the finer arts of the game produced as the position of the two clubs warrant.

We were somewhat lucky to finish on the winning side last Saturday against Rochdale Hornets at Rochdale, the score of five points to two denotes the closeness of the game and our opponents' forwards put up a real good show against our six forwards.

On this showing the Hornets must look forward with confidence to next season. All clubs like to be doing well and we, ourselves, look forward to a "full house" in our local "derby" with the Hornets.

## R. BOARDMAN & CO.

ALE AND PORTER BOTTLERS

— AND —

MINERAL WATER MANUFACTURERS

"Special"—GRAPE FRUIT CRUSH

**Ashton-u-Lyne**

Obtainable in the Pavilion

Telephone ASH 2310



# BRIERLEY'S

BUY A PIE WITH A NAME



## A. BRIERLEY

202 MANCHESTER STREET

OLDHAM

## BRADDOCK'S *Renowned* RASPBERRY COUGH SYRUP

*The Original Cough and Bronchitis Remedy*

**SOLD IN BOTTLES 1/5, 3/4 & 5/7**

Only obtainable at

Top of (7a) 193 Huddersfield 9 Market St. 92 Burnley Lane  
Manchester St. Road, Oldham Royton Chadderton

### The Greatest All Sports Daily Paper

A ways dependable, informative,  
helpful - Every Sport is covered  
in the

## SPORTING CHRONICLE

AND ATHLETIC NEWS  
EVERY DAY PRICE 3D.

Be Loyal—Buy British

AT

## COOPER'S

GENT.'S HAT & CAP SPECIALISTS

Also Tootal Ties,

Shirts, Socks, Pullovers, &c

20 Curzon St., Oldham

"WHERE YOU WENT WHEN A BOY,"

# CIVILITY COURTESY CLEANLINESS

## GREY HORSE INN

UNION STREET (opposite Grosvenor Cinema)

Proprietor: ROWLAND B. JONES

ALL GLASSES STERILIZED  
IDEAL FOR PARTIES

**ROBINSON'S SPARKLING ALES**

The gate receipts at Rochdale were £611, the best gate by over £200 they have taken this season.

J. B. Mahoney's leg injury is improving very slowly to treatment he is receiving at The Oldham Royal Infirmary and the specialists will not give permission for him to play this week.

The injury is one of stretched ligaments and time and treatment is the only cure, perhaps we may see him in action before we finish our season.

**NEXT SEASON'S  
FIXTURES**

Much controversy has taken place and we have received a few enquiries as to how the formula works for our fixtures next season.

I append below the formula taken from The Northern Rugby League Bye-Laws.

"Clubs in membership with the League shall play home and away matches with each club in their own County League and five matches outside, Halifax to play in the Lancashire League. The five outside fixtures shall be determined by the formula set out below:—

1	—	1	2	3	6	10
2	—	1	3	4	5	12
3	—	1	2	3	6	13
4	—	2	5	6	7	8
5	—	2	4	8	9	11
6	—	1	3	4	13	14
7	—	4	7	8	9	11
8	—	4	5	7	10	14
9	—	5	7	9	11	14
10	—	1	8	10	12	13
11	—	5	7	9	12	14
12	—	2	10	11	12	13
13	—	3	6	10	12	14
14	—	6	8	9	11	13

The arrangement of all League fixtures shall be left with the management Committee."

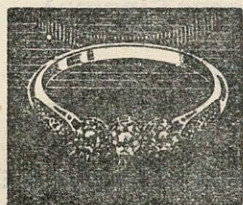
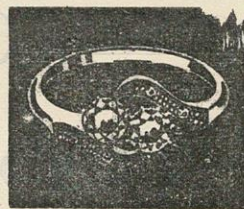


# Joseph Howell & Sons

Jewellers since 1875

Telephone MAIn 4802

## Rings & Watches



8 & 10 MUMPS  
OLDHAM

For the **Piping** Days of Peace

# AFRIKANDER

*Britain's Most Famous Mixture*

Telephone MAI (Oldham) 4559

## William Forsyth Ltd.

Wine & Spirit Merchants

Ale & Porter Bottlers

### OUR POLICY:

*In the early days of the war we resolved on a Policy—*

“To ration our supplies as fairly as we possibly could and to refrain from placing our stocks on the market and so obtain enhanced prices, but to maintain a level of prices most favourable to the customer.”

WE TRUST WHEN NORMAL CONDITIONS, RETURN OUR POLICY WILL NOT BE FORGOTTEN

## RUGBY LEAGUE REPORTS

FOR ENTHUSIASTS  
BY ENTHUSIASTS

For the fullest and most knowledgeable accounts of Rugby League events—and for the most graphic and accurate reports covering all aspects of British Sport

## SEE THE DAILY MAIL

RIGHT

Blue **OLDHAM** Jerseys

LEFT

1—INGLESFIELD, S.

2—EVANS, S. 3—HARRIS, N. (Capt.) 4—MITCHELL, W. S. 5—LARGE, E.  
7—SMITH, A. R. 6—KENNY, V.

PUGH, N.

13—AYRES, T.

11—THOMPSON, N.

12—THOMAS, L. M.

8—OGDEN, H.

9—FROST W.

10—MOORE, W. J.

Referee—  
MR. G. S. PHILLIPS  
of Widnes



Touch Judges—  
Mr. C. C. Snowden and  
Mr. J. Woodward

10—PARRY, K.

9—CATTERALL, J.

8—MILLER, J.

12—WOODS, H.

11—RYAN, C.

13—CAYZER, J.

STIRRUP, G.

7—RILEY, P.

6—ROWE, J.

FARRELL, J.

5—SALE, T.

4—KERWICK, E.

3—DALEY, S.

2—TODD, H.

1—BREARE, R.

LEFT Cherry & White

**LEIGH**

Jerseys

RIGHT

## FRIENDSHIP HOTEL

Opposite Tram Depot

(Fully Licensed)

Near Mumps Station

You must  
visit the popu-  
lar . . .

**FRIENDSHIP  
LOUNGE**

# MUMPS

TELEPHONE MAIn 4980

Manager - EDWIN P. FOSTER

Headquarters of Oldham Football Club

For . . .

**ENTERTAINMENT**  
with Refinement  
Nightly.

**COMFORTABLE and  
COMMODIOUS**



WHEN IN OLDHAM VISIT THE

Tel. MAIN 1115

# Grapes Hotel

B. BOOTH, Proprietor

THE POPULAR HOUSE OF CALL FOR FIRST-CLASS CONCERTS NIGHTLY

YORKSHIRE STREET, OLDHAM

WILSON'S SPARKLING ALES always in best of condition.

WINES AND SPIRITS

Including Halifax and Workington Town The Lancashire League consists of 14 clubs, and each play the others home and away. The formula of arranging our Yorkshire fixtures as defined above is simple. For example, if our club finishes the fifth Lancashire Club in The Northern Rugby Football League, we play home and away No. 2, 4, 8, 9, and 11, of the Yorkshire clubs in The Northern Rugby Football League. If we finish No. 6 Lancashire club we play Yorkshire clubs No. 1, 3, 4, 13 and 14. And No. 7 Lancashire club plays Yorkshire clubs finishing No. 4, 7, 8, 9, and 11.

When the league has finished all its matches you may now find out very early who are our opponents for next season.

We play 13 Lancashire clubs home and away and five Yorkshire clubs home and away, a total of 36 league matches.

## THE RUGBY LEAGUE GAME

Much activity has been seen amongst club officials regarding amendments to the rules and bye-laws of our game.



## For A Real Good Meal

AFTER THE MATCH VISIT THE

## CO-OPERATIVE CAFE

Popular Teas at Popular Prices

MARKET PLACE Tel. MAIN 211

Oldham Industrial  
CO-OPERATIVE SOCIETY LTD

Phone MAIN 1779

# MANN'S Furnishing Stores

WRIGHT STAFFORD  
GEORGE STAFFORD

RENOWNED FOR **VALUE** AND **SERVICE**

11, 13 & 15 Huddersfield Road  
OLDHAM

May 10th was the last day for receiving the amendments and one hears of several innovations to be brought forward at the annual meeting of the clubs for next season.

One is to bring the general time of kick-off forward from 3-30 p.m. to 3 p.m., and this should meet with the general approval. The 3-30 p.m. kick-off is out of date and should bring our game in line with the soccer games, and possibly we may get more publicity in the press with regard to more lengthy reports of our matches.

We, along with the Swinton club, have tried for years to eliminate this 3-30 p.m. kick-off without success, and we hope at the annual meeting that this new rule will be put in operation next season.

Wembley cup finalists in future may get eight per cent. of the net proceeds of the match with a minimum of £750. Twelve months ago this was only £500—not sufficient to pay expenses. The inclement weather clubs experienced during the past winter has resulted in recommendations for increased costs in preparing the ground. It is now suggested that for the clearing of snow the allowance should be increased from £25 to £80, and frost protection costs should be advanced from £10 to £40.

The much criticised question of professional players being eligible to accept an executive position with any club is to be put forward, and ex-players approved by the Council can serve on a club committee or directorate provided he is no longer on the professional register of any club.

At the present time he has to wait 10 years after ceasing to be a player.

## FIRST TEAM



## TWO REMAINING HOME MATCHES

May 30 (Whit Friday)—Belle Vue Rangers. Kick-off 3-30 p.m.

June 3 (Tuesday)—Liverpool Stanley. Kick-off 7-0 p.m.



Phone MAIN 2759

R.A.C. Appointed

## GREAVES ARMS HOTEL

(FULLY LICENSED)

RESIDENTIAL AND COMMERCIAL

OPPOSITE TOWN HALL

YORKSHIRE STREET

Luncheons, Teas, etc.

Wedding Breakfasts

Dinner Parties

VINCENT SNAPE, Proprietor

OWN PARKING GROUND

### HALF-TIME SCORES

The Half-time Scores in the Matches given below will be shown on the Score Board immediately they are received—

<b>A</b>	WIGAN v. HALIFAX	<b>D</b>	SWINTON v. BELLE VUE R.
<b>B</b>	WARRINGTON v. WAKEFIELD	<b>E</b>	ENGLAND v. FRANCE
<b>C</b>	WIDNES v. ROCHDALE H.	<b>F</b>	OLDHAM ATH. v. CHESTER

**NOTE**—It is desired that the Advertisers in this programme should receive every support from the Members of the Oldham Football Club.

## CROOKES & PEARS LTD.

REGISTERED JOINERS AND BUILDING CONTRACTORS

Shop and Office Fittings, Portable Buildings and Garages, Mill Work

Have Your Houses MODERNISED

LICENSED WORK

Flush Doors, Pelmet and Curtain Rails, Modern Postal Knockers and Door Fittings, Bathroom and Fireplace Alterations. Repairs to Roofs and Floors.

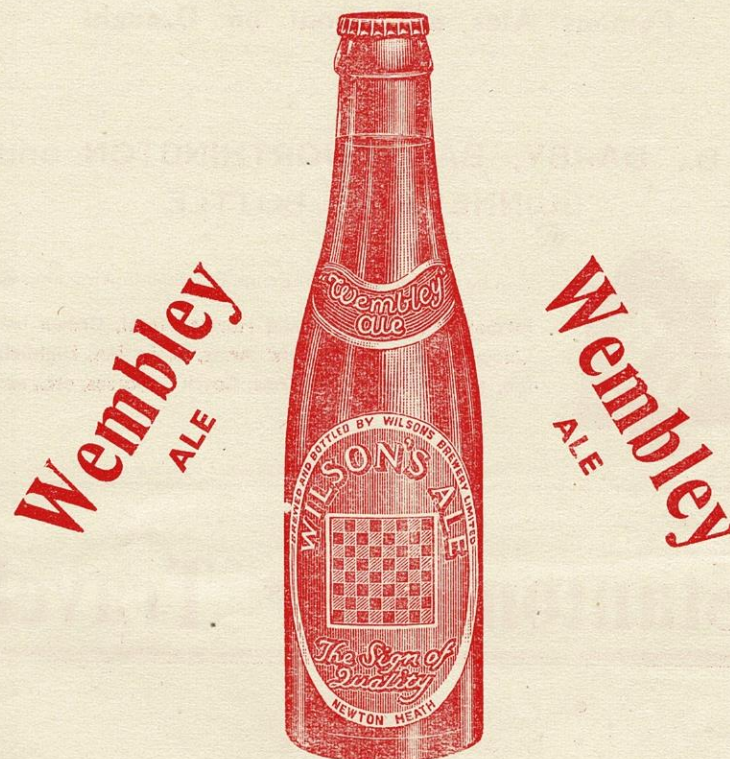
ALL CLASSES OF PROPERTY REPAIRS

Windows Re-Corded. Garden and Yard Gates. Repairs to Furniture. All work executed by Skilled Craftsmen. ESTIMATES FREE

WRITE OR ENQUIRE—

9 BRIDSON ST., OLDHAM  
or 19 ABBOTSFORD ROAD

# Wilson's Brewery Ltd.



IS DISTINCTIVE

ADDS CONSIDERABLY TO YOUR ENJOYMENT OF THE GAME

Brewed and Bottled by—

## WILSON'S BREWERY LTD.

NEWTON HEATH, MANCHESTER