

BELLE VUE

Showground of the World

PRESENTS A

*Record Season of
Exciting Attractions*



Sensational Robot Exhibition. Bobs Coaster.
Brownie Coaster. Cake Walk. Caterpillar.
Animal Rides. Frogmen Divers. Games Arcades.
Ghost Train. Globe Infernal. Hurricane
Racer. Merry-go-Round. Miniature Railway.
Moon Rocket. Octopus. Over-the-Falls.
Scenic Railway. Boating. The Great Omi.
Wall of Death. Walcott's Marionettes.
World's Smallest Waxworks. Zoo & Gardens.
Bars and Restaurants.

SPEEDWAY ★ WRESTLING

Every Saturday at 7.0 Weds. & Sats. at 7.0

DANCING NIGHTLY AT SEVEN
SATURDAYS AT 3-0 AND 6-30 P.M.

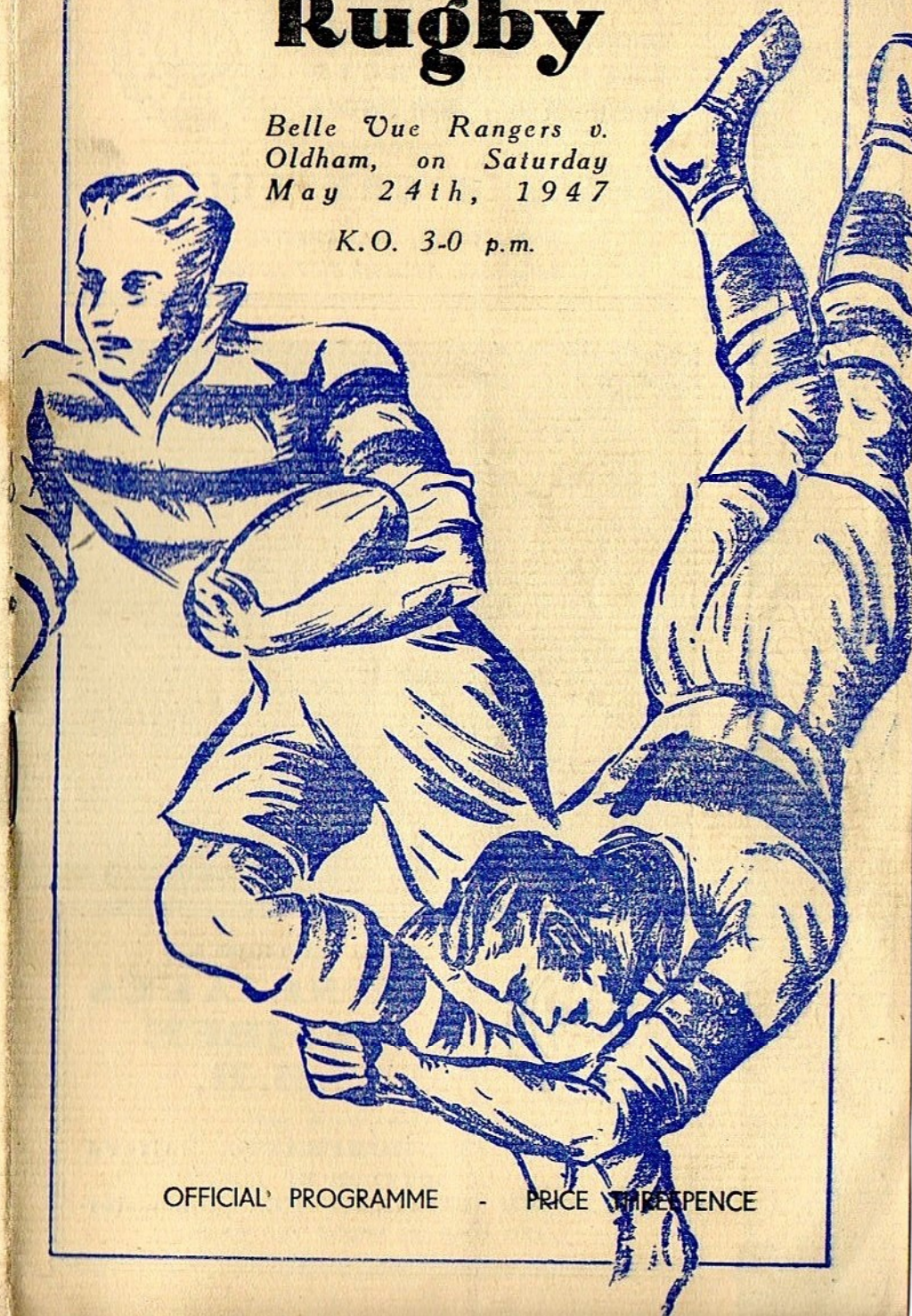
OLDE TYME DANCING
TUESDAYS AND THURSDAYS AT SEVEN P.M.

THE VENUE
THAT HAS **EVERYTHING**

Rugby

*Belle Vue Rangers v.
Oldham, on Saturday
May 24th, 1947*

K.O. 3-0 p.m.



OFFICIAL PROGRAMME - PRICE THREEPENCE

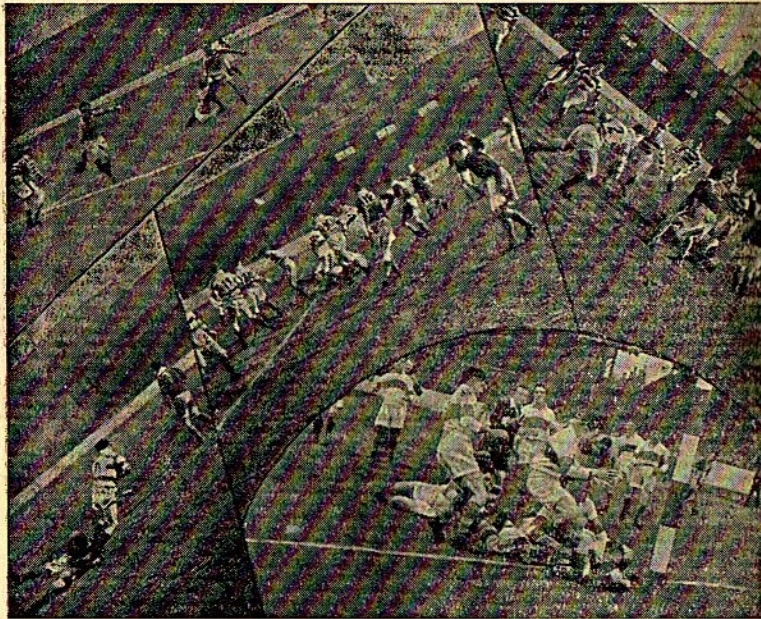


Sole Bottlers for these Gardens of
GUINNESS (HARP LABEL) - **TETLEY**
BASS - **YOUNGER**
WORTHINGTON - **JOHN SMITH'S**



SLACK & COX LIMITED

HYDE ROAD, MANCHESTER 12
 Telephone: ARDwick 3117 (2 lines)



Sportsmen say "Good Health in .

FINE ALES
EMBEE
B. B.

ALL BREWED BY
WALKER & HOMFRAY'S, Salford
 BOTTLED BY
PALATINE BOTTLING CO., Manchester
 AND SOLD IN BELLE VUE BARS

RUGBY REVIEW

Official Programme of Belle Vue Rangers Edited and
 Published by the Press Department, Belle Vue

Belle Vue Rangers R. F. C. (Broughton Rangers Belle Vue Limited)
 Directors—B. L. Atkinson, Esq. Ald. W. H. Oldfield, Esq., J.P., M.P. T. Spedding, Esq.
 Secretary-Manager—T. Spedding.

Au Revoir . . .

To-day's match brings to an end our home fixtures for the 1946-47 season, and in saying *au revoir* let us look to the 1947-48 season in which we hope the efforts we are making to strengthen the team will be an accomplished fact, and that we shall open next season much stronger than we have been in the past.

So with this thought in mind the players and Management of Belle Vue Rangers R.F.C. tender their heartiest thanks to their supporters and patrons of the game, and look forward to the coming season with every confidence that Belle Vue Rangers will be the power in the field of Rugby Football that it is intended they should be.



E. GWYTHYR
 Belle Vue Rangers' International Forward

Members' Tickets

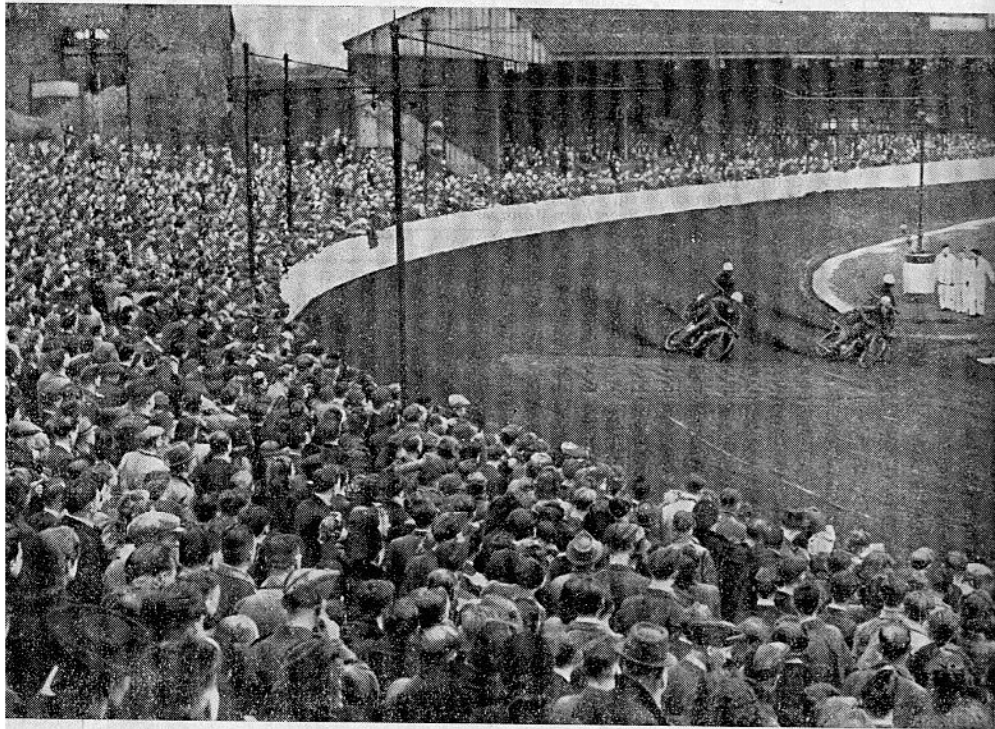
Season 1947-48

With the extension of the season there is not a lot of time between the closing of the present and the opening of the new, and much preparation must be done during the short close season.

It is hoped that we shall have a number of applications for Members' Tickets, and we would advise all who are desirous of purchasing these to write to the Secretary of the Club, Mr. Tom Spedding, intimating their desire to take up membership.

Revision of Fixtures . . .

Fixtures have again been revised. It will be remembered that our fixture with Salford was due to be played at Salford on Saturday, August 31st, but for reasons most suitable to this important fixture it has now been arranged that this match with our local rivals shall be played at The Willows, Weaste, on Wednesday evening next, May 28th, kick-off, 6-30.



DON'T FORGET THE

SPEEDWAY

Above is an Illustration of an enthusiastic crowd at one of these Meetings.

**EVERY SATURDAY AT
7.0 P.M. on the Track
surrounding this
famous Stadium.**

At the time of going to press with this programme we understand that the Barrow and Leigh Rugby Football Clubs have been invited by the Rugby League to undertake a propaganda tour of Cornwall in June. Matches will be played at Newton Abbot, Redruth and Camborne.

We feel certain that these two teams will, in these three Rugby Union strongholds, produce R.L. Football that will be a credit to our game.

Doncaster R.L. Club to be formed

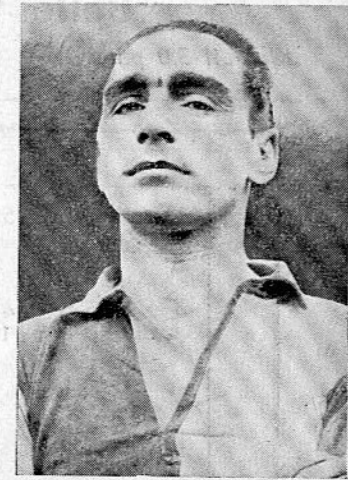
It was reported in the *Daily Dispatch* on Wednesday that after Mr. W. Fallowfield, Secretary of the Rugby League, had addressed a well-attended meeting at Doncaster on Tuesday evening, it was decided to form a Doncaster R.L. Club and to raise a team for next season. Officials were appointed.

Thank You!

We are to-day making a collection on behalf of the dependants of the late HUDSON IRVING of Halifax, whose recent tragic death on the field of play came as a tremendous shock to all followers of Rugby Football.

We sincerely hope that all supporters present this afternoon will contribute to this most deserving cause.

For many years Hudson Irving was a great favourite, not only with his own supporters but on every field on which he played the game.



STAN McCORMICK

"Best wishes, Ned"

It is reported that Ned Hudson, the Rugby League International Forward of Workington Town, is retiring from the game at the end of this season. For a few years Ned was a regular playing member of our club until his transfer to Workington Town. Ned was always a gentleman, both on and off the field, and we wish him every success in his retirement from the game. We trust he will be as great a success in the business he has undertaken as he was on the field of sport.

*

"Double" Up . .

With our victory at Swinton, on Saturday last, we accomplished the "double" over our opponents.

Our team, as a whole, played very well indeed, and in this match McCormick and Gwyther were outstanding.

**WHITE
CHIEF**



It's a
TIP TOP LOAF

A PRODUCT OF THE TIP TOP BAKERIES MANCHESTER 18

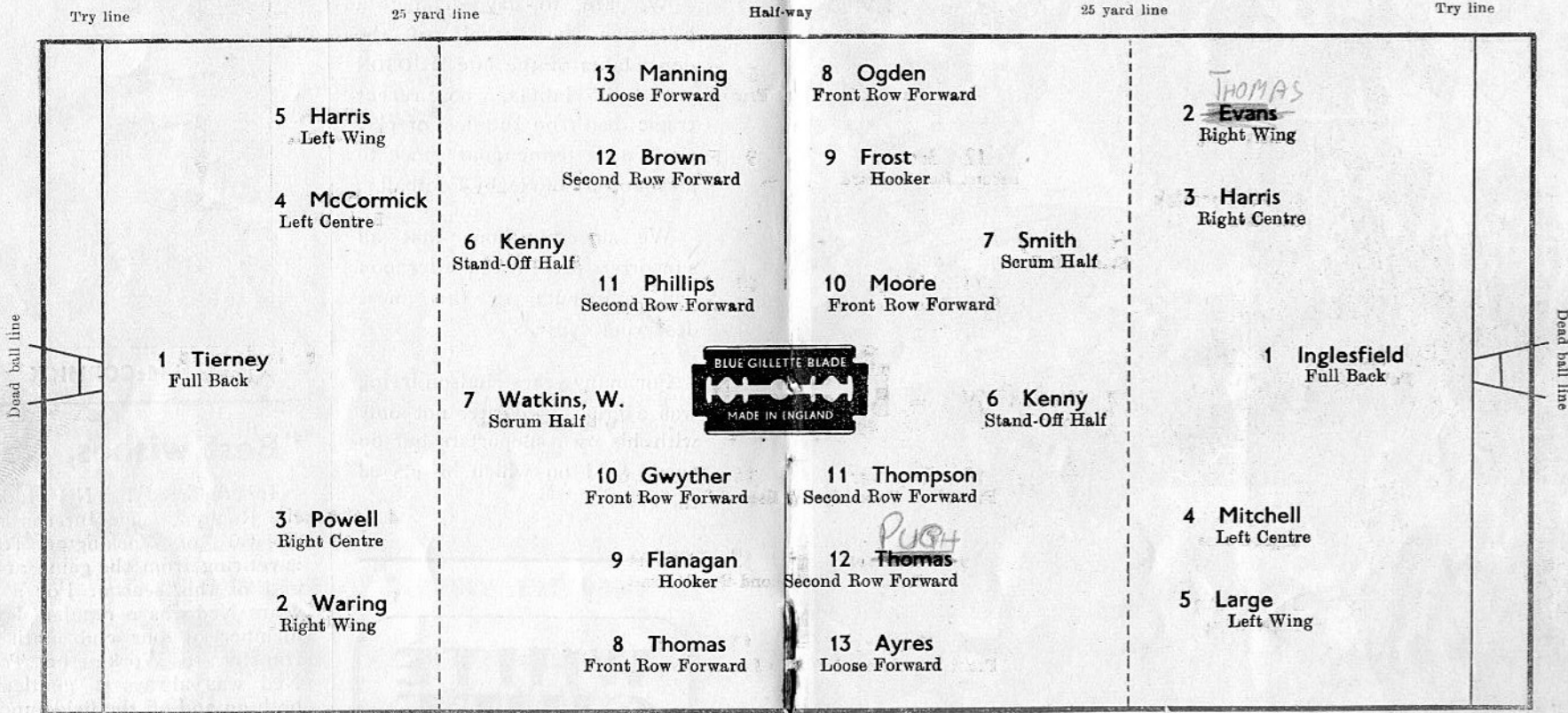
Belle Vue Rangers Team

Kick-off 3.0 p.m.

Saturday, May 24, 1947.

Oldham Team

Kick-off 3.0 p.m.



Referee : F. Smith



Touch Judges : F. Abram and J. Woodward



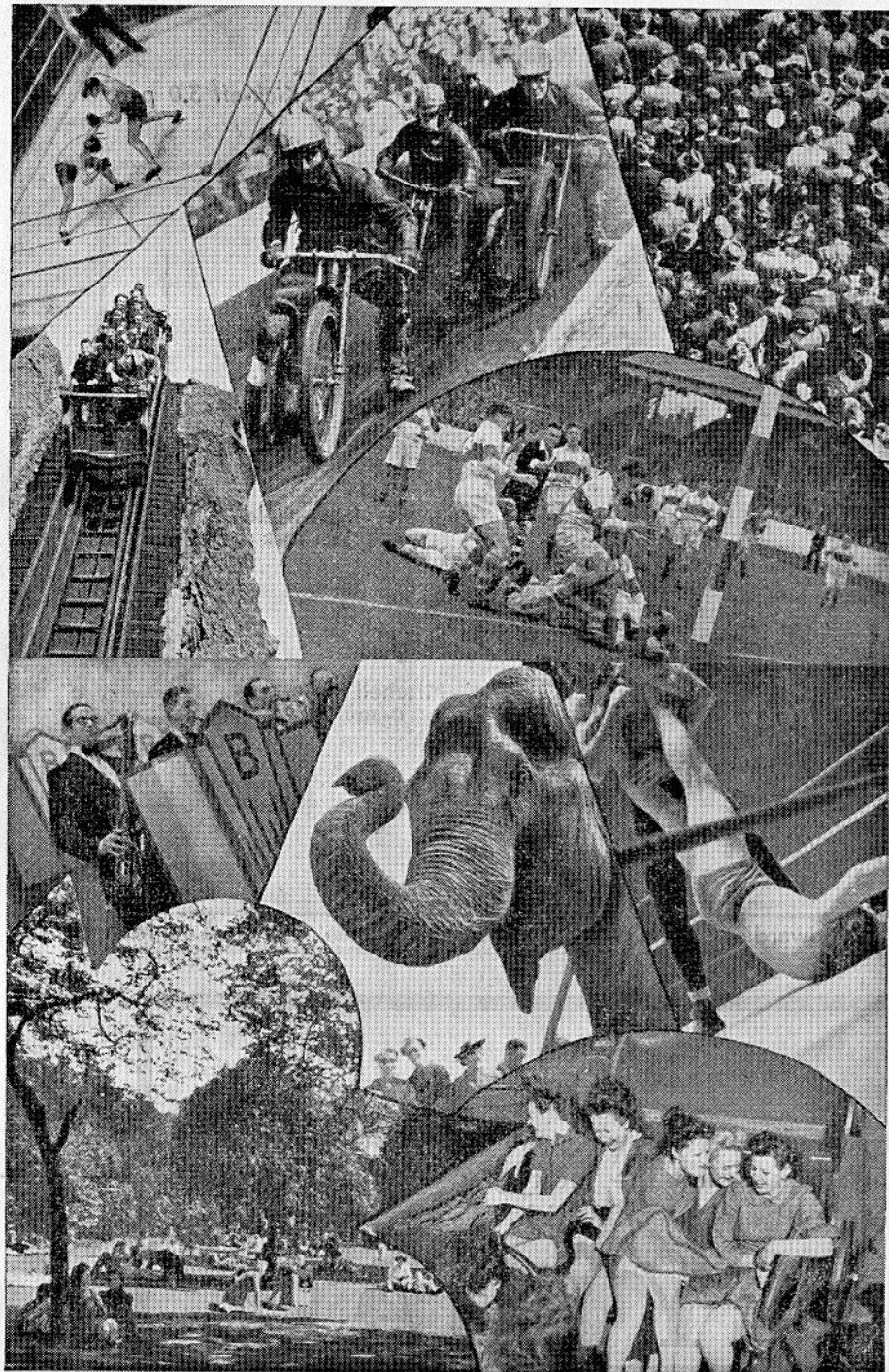
Hon. Club Physician : Dr. L. Loughran

RUGBY LEAGUE REPORTS

FOR ENTHUSIASTS
BY ENTHUSIASTS

- For the fullest and most knowledgeable accounts of Rugby League events — and for the most graphic and accurate reports covering all aspects of British Sport

SEE THE DAILY MAIL



A DATE YOU MUST KEEP !

Kings Hall, Monday, June 9. 7 p.m.

**THEO MEDINA v PETER KANE
JACK LONDON v KEN SHAW
and Grand Supporting Bill**

*Tickets still available, at 5-Guineas,
3-Guineas, and 2-Guineas*

JACK FEARNLEY

*Belle Vue Rangers
Second Row Forward*

offers excellent
accommodation, cuisine, and
service at his select
Apartment House

**"FAIRHOLME"
142, BOND ST.
BLACKPOOL
(S.S.)**

Phone—South Shore 42113

Write for terms

Open all the year round

Don't forget to see the new attractions on the Amusement Park.—The Globe Infernal.—The Frogmen Divers.—The Marionettes.—The Great Omi.—The Sensational Robot Exhibition.

**THE GREATEST
ALL SPORTS
DAILY PAPER**

The Sporting Chronicle stands supreme in sport. It is dependable, informative, helpful.

SOCCER. RUGBY. RACING
BOXING. GREYHOUNDS
GOLF. TENNIS. ATHLETICS
CRICKET. SWIMMING
BOWLS. PIGEON RACING
WHIPPET RACING
HOUND TRAILING, etc.

EVERY SPORT IS COVERED IN THE
**SPORTING
CHRONICLE**
AND ATHLETIC NEWS

To avoid disappointment
place an order now !

EVERY DAY PRICE 3d.

FIRST TEAM RUGBY LEAGUE FIXTURES FOR 1946/7



REVISED FIXTURES

May 28 (Weds.) Salford A...6-30
 30 (Friday) Oldham A...3-30



Our present Record

Aug. 31 Wigan..... H lost 11 12	Jan. 1 York..... H won 28 8
Sept. 7 Liverpool S..... A won 7 0 <i>(1st Leg 1st Round Lancs. Cup)</i>	4 Warrington..... A lost 5 2
14 Liverpool S..... H won 11 5 <i>(2nd Leg 1st Round Lancs. Cup)</i>	11 Halifax H won 27 13
21 Workington ... A lost 14 16	18 Barrow H drew 3 3
28 Salford H won 13 5	25 Dewsbury..... A lost 8 0
Oct. 5 Leigh A lost 4 5	Feb. 22 Oldham..... A won 3 10 <i>(1st Round—1st Leg R.L. Cup.)</i>
12 Warrington ... H lost 5 14	March 8 Oldham.....— drew 0 0 <i>(1st Round—2nd Leg R.L. Cup, at Salford.)</i>
16 Widnes H won 5 0 <i>(Semi-Final Lancs. Cup)</i>	22 Wigan A lost 12 5 <i>(2nd Round R.L. Cup)</i>
19 Wigan..... A lost 0 68	29 Leigh.....H lost 2 8
26 Wigan..... — lost 3 9 <i>(Final Lancs. Cup, at Swinton)</i>	April 4 Dewsbury.....H won 5 0
Nov. 2 Liverpool S..... H lost 7 18	5 YorkA won 3 19
9 Hull K. R. A lost 2 5	7 St. Helens.....A won 10 12
16 St. Helens Hdrew 10 10	8 HalifaxA won 0 10 <i>Match abandoned after 55 mins.</i>
23 Liverpool S..... A won 13 11	12 Workington.....H lost 2 10
30 Hunslet H lost 2 4	19 HunsletA lost 12 10
Dec. 7 Widnes A lost 5 22	23 SwintonH won 8 3
14 Castleford H lost 6 8	26 BarrowA lost 17 10
25 Rochdale H..... H won 22 5	May 7 Widnes.....H lost 3 13
26 Rochdale H..... A won 0 4	10 Hull K.R.H won 31 8
28 Castleford A lost 12 5	17 SwintonA won 5 14

There is no greater recommendation than **QUALITY**, such quality, for instance, as that upon which the famous House of Lowe's was built and has progressed across the past forty years.

LOWE'S

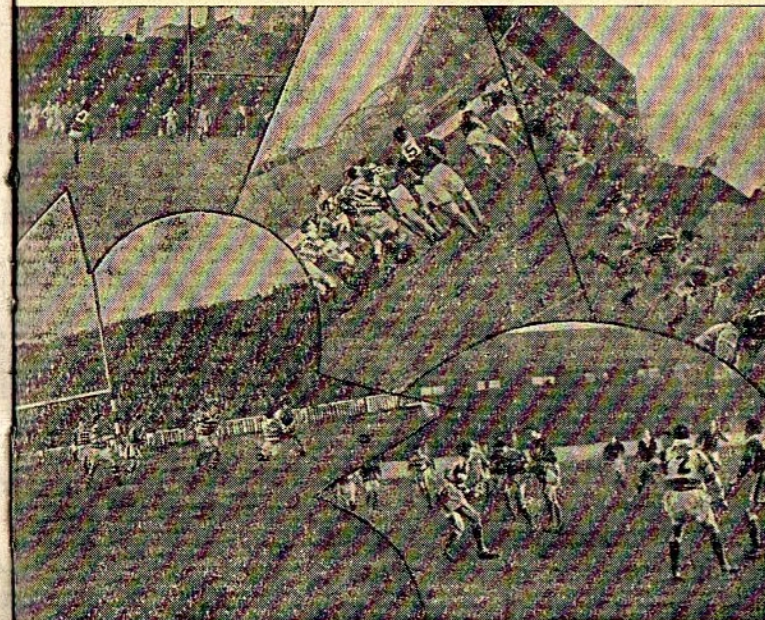
Quality Confectioners

76 STOCKPORT RD. 694 STOCKPORT RD. 434 WILBRAHAM RD.
 LEVENSHULME LONGSIGHT CHORLTON

Telephone
 Rusholme 1915

Telephone
 Rusholme 4801

Telephone
 Chorlton 1651



To "Tackle" Home problems of furnishing and to "Try" for a "Goal" of quality, necessitates dealing with a firm of repute and prestige.

DENT'S

619-621 Stockport Rd., Longsight

Telephone: RUS 4766

The Centre for predominant Wireless, including :
H.M.V. ECKO. PHILLIPS. FERGUSON. FERRANTI, etc.

We are anxious to buy and will pay top market prices for good quality furniture, carpets and rugs.

