

## PLEASE

Don't throw away this Programme in any Street or Public Place, but take it Home and put it out with your Waste Paper for the Salvage Collectors . . . .

**KEEP ROCHDALE  
TIDY  
and  
BE PROUD OF IT**

ROCHDALE CORPORATION — CLEANSING DEPT.

## Rochdale Corporation Transport Services

MELLOR STREET, ROCHDALE  
TELEPHONE 4691

**Travel by 'bus to Manchester. Two Services**

Route 17—via Middleton (Stopping Service)

Route 24—via Chadderton (Limited Stop)

**Reliable Cheap Punctual Starts from Town Centre**

Parcels and light goods delivery to and from all parts of Rochdale and District, Oldham, Bury and Manchester  
**QUICK DELIVERY — CHEAP RATES**

Special 'buses may be hired for Rochdale and District  
Rates quoted on application

OFFICIAL PROGRAMME — 2d.

## Rochdale Hornets Football Club Limited

ATHLETIC GROUNDS, ROCHDALE

Telephone No. 48004

**EASTER, 1948**

**Good Friday, March 26th — Kick-off 3.0**

**HORNETS**

VERSUS

**WORKINGTON**

**Easter Saturday, March 27th — Kick-off 3.0**

**HORNETS v. OLDHAM**

## ROCHDALE STADIUM

Greyhound Racing under the National Greyhound Racing Club Rules

**6.30 P.M. SATURDAYS ONLY**

Ten FIVE DOG Races — Bookmakers  
and WIN, PLACE and FORECAST TOTE

There is a good service of Buses and Trains to Manchester

Times Press, Baillie Street, Rochdale



STILL YOUR FAVOURITE

**'OWD BETTS'**

Gives a Cordial Welcome to all  
"SUPPORTERS."

GROVES and WHITNALL'S  
Light Amber, Dark Amber,  
Special, and Guinness  
(in bottle)  
Mild and Bitter on Draught  
Finest Wines and Spirits

Welcome also to  
FAREWELL INN, CASTLETON  
another excellent house of call  
when supporting the Hornets.

Private Address: 1061 Manchester  
Road, Castleton, Rochdale. 'Phone:  
Castleton 57146

Depots: Rochdale, Heywood, Castleton

Tel. Castleton (Rochdale) 57118

**DISTRICT COAL  
& COKE Co.**

H. WINSTANLEY

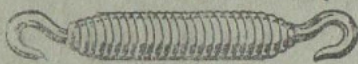
Distributors of All Kinds of  
**COAL, COKE &  
PATENT FUEL**

**831 Manchester Rd  
CASTLETON, ROCHDALE**

## TEXTILE ACCESSORIES and SPRINGS

### STANDARD TEXTILE ACCESSORIES

BOX END SPRINGS;  
WEFT CRATES; HINGE  
SPRINGS; DROP-BOX  
SPRINGS; SHUTTLE  
COVERS; BOW SPRINGS;  
DRAG SPRINGS; LAGS;  
SHUTTLE CLIPS; LAG  
PEGS; SHED RODS;  
WIRE HEALDS; PICK-  
ING STICKS; LOOMER'S  
COMBS; PERFORATED  
STRIPS; LINGOES;  
WEFT FORKS, Etc., Etc.



Catalogue Sent on Request

With the gradual return to normal conditions after years on vital war production, we are again able to offer the textile manufacturer the value of our standard textile accessories. Although the bulk of our production at present is for export requirements, we can offer limited quantities from stock.

**BROADBENT  
& COMPANY (Rochdale) LIMITED**

ST. JOHN ST., MILNROW RD., ROCHDALE

Telephone:  
Rochdale 4628-9

Telegrams:  
Broadbent 4628

## NOTES

Owing to the Easter holidays we have had to combine two days matches in one programme, so if you are reading this on Good Friday at the Workington match, keep your programme for the Oldham game to-morrow, unless you wish to further help the club by buying the same programme each day.

### WELL DONE, HORNETS

Let us lose no time in offering hearty congratulations to the Hornets team on their feat in reaching the semi-finals of the Challenge Cup. By their wins over Belle Vue Rangers in the second round and over Keighley in the third round they have aroused enthusiasm in the town which ought to be reflected in greatly increased crowds to-day and to-morrow.

### NOW FOR SWINTON

Next Saturday the Hornets will be competing for the first time in 23 years in the semi-final of the Challenge Cup competition. In meeting Wigan at Swinton no one underestimates the Hornets task but they will go on the field to win, however heavily the odds are against them. Anything can happen in a cup-tie.

### OUR VISITORS

Workington, our Good Friday visitors, are making their third trip to the Athletic Grounds. In their brief history as members of the Rugby League they have made swift and definite progress under the wise leadership of Gus Risman and they come hoping to gain points

which will sustain their challenge for a place in the first four at the end of the season. They have recruited a very sound team with a pack of forwards which on its day can hold its own with the best in the League.

Oldham, whom we welcome on Easter Saturday, are in a different category from the point of view of the number of visits they have made to the Athletic Grounds. It is superfluous to say that they are our traditional rivals. We in Rochdale are probably just as puzzled as they at Watersheddings that Oldham, with their playing talent, have had such a disappointing season. But whether they are playing well or badly they are always a menace to the Hornets as the records over the years show. On this occasion the Hornets anticipate far better things than have accrued from many matches we can recall.

### REARRANGED FIXTURES

The directors hope in the near future to re-arrange all the Hornets' outstanding games. These are Hull Kingston Rovers (away) and Swinton, Liverpool Stanley and St. Helens (home). Additionally, Featherstone Rovers are due at Rochdale on April 10th. It is expected that these remaining home games will be well supported in the light of the Hornets Cup progress and there is the chance that the team can gain several points and so improve on their League record of last year.

Est. 1851

(Prop. W. H. PLATT)

**FOWLER & CO.**

We are recognised consulting specialists of Surgical Appliances and supply all kinds of Surgical Supports through National Health Approved Societies.

ADVICE AND ESTIMATES FREE

**8 BLACKWATER ST., ROCHDALE**



Elastic  
Surgical  
Hosiery

Rupture  
Appliances  
  
Surgical  
Abdominal  
Belts



TRY  
**NALL'S**  
**HAIR CREAM**  
(OILY)

Fixes the Hair and  
Gives it a Soft and  
Brilliant Appearance

1/6 and 2/6

**HENRY S. NALL**

M.P.S.

Pharmacist and Dispensing Chemist

117 MILNROW Rd., ROCHDALE

Telephone 2088

Grams: "Sports," Rochdale  
Phone: Rochdale 2132-3

**HAROLD NUTTER**

MEMBER OF B.P.A.

Turf and Football Accountant

16 Drake Street

ROCHDALE

CREDIT ACCOUNTS OPENED  
ON APPROVED REFERENCES

SPORTS CREDIT  
FOOTBALL COUPONS

ACCOUNTS RENDERED DAILY  
OR WEEKLY AS DESIRED

**A. THOMPSON & SON**

N.G.A.

NURSERYMEN & FLORISTS

Specialists in  
Bedding Out Plants  
Floral Emblems, etc.  
Fertilisers

TOP MARKET : : ROCHDALE

Phone 3375

Residence 2392

**Stanley Coard & Co., Ltd.**

Tailors of Distinction

Carry the largest and choicest  
selection of Ready Made Over-  
coats and Raincoats in the district

Telephone 47881

48 YORKSHIRE STREET — ROCHDALE

**HORNETS**

**TODAYS TEAMS**

**OLDHAM**

Full back:

1.—Griffiths

Threequarters:

2.—Nicholson W.

3.—Winstanley

4.—Gummer

5.—Nicholson H./Lowery

Half-backs:

6.—Kerr

7.—Lamb

Forwards:

8.—Wagstaff

9.—Davies

10.—Rothwell

11.—Booth

12.—Oxley/Ellison

13.—Fearnley



Full back:

1.—Spencer

Threequarters:

2.—Inglesfield

3.—Harris

4.—Mahoney

5.—Mitchell

Half-backs:

6.—Kenny

7.—Smith

Forwards:

8.—Taylor

9.—Brooks

10.—Thompson

11.—Thomas

12.—Tomlinson

13.—Givvons

Referee:

Mr. P. Cowell (Warrington)

Linesmen:

Messrs. T. Watkinson and J. W. Jackson

**CORNBROOK**

**ALES and STOUT**

**CORNBROOK BREWERY CO. LTD.**

CHESTER ROAD,

MANCHESTER 15

"The Sportsman's Pitch"

**PIONEERS'**

Outfitting and Sports Departments

If it's obtainable—  
We have it

**PIONEERS**

Outfitting and Sports Departments

Lord Street and Wet Rake

**THE WINNER!**



*A pipeful of*

**AFRIKANDER**

3/4  
PER OZ

IT'S CHEAPER TO SMOKE A PIPE!

**EAGLE HOTEL**  
**PRINCE ALBERT**  
**BAY HORSE**

(ALL OLDHAM ROAD)

**KINGSWAY HOTEL**

(KINGSWAY; Car Park)

All Supply

**MANOR**  
**ALES**



# S. HOWARTH

F.B.O.A. (HONS.) D'ORTH

Ophthalmic Optician and Certified Orthoptist

(Successor to JOHN POWER)

86 DRAKE STREET

Telephone 2672

TELEPHONE 2298-9

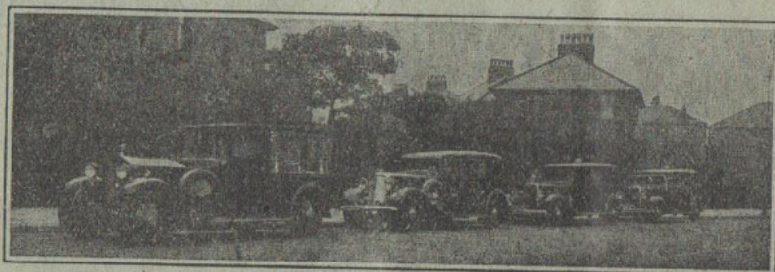
FLETCHER BOLTON LTD.

BARROW & LADDER  
MANUFACTURERS  
TIMBER MERCHANT

Oldham Road Saw Mills :: Rochdale

ESTABLISHED 1830

We have a Modern Fleet of Cars available for Private Hire—Weddings a Speciality



A. E. DIXON & SON LIMITED

COMPLETE FUNERAL UNDERTAKERS  
EXETER ST., DEEPLISH, ROCHDALE

Tel. 3001

## Supporters' Club Notes

### VICTORY

The victory verse published in the last issue of the programme seems to have had the desired effect, for the Hornets are on the crest of a wave. The two generous bonus gifts from the Supporters' Club to the players are now "old news," but we are sure our members will be happy to have taken a share of still another practical gesture towards helping to put the Hornets "on the map."

### EZE POOLS CONCERT

Our Concert on March 9th was a great success. We had a capacity house, a very fine evening's entertainment and a collection of £17. On top of this the management of Eze Pools defrayed the main expenses and made a very generous grant in addition. We are indeed grateful to you grand people who support every effort we work for. It has been proved in the many activities of the Supporters' Club that there is tremendous interest in matters concerning the Hornets and events such as this latest concert brings followers of the Club together in the most congenial of circumstances. Our thanks also to our good friends from Warrington. They have taken a real interest in our work and we thank them most heartily and hope to see their talented company again soon.

### DANCE AND WHIST DRIVE

These notes are written before the Whist Drive and Dance at the Carlton, but we are confidently hoping for another good night. Our Whist prizes have been

on show at Burton's, The Walk, and once more we wish to thank the management of that firm for their kind co-operation.

### MAGAZINE

Send your contributions to the Secretary for the "Hornet" Magazine. Any item of interest will be accepted for consideration by the Magazine Sub-Committee and we ask for your aid.

### ACKNOWLEDGEMENT

We wish to give our best thanks to Mr. Herbert Shore for a donation of 10/- to the funds of the Supporters' Club; to Mr. E. Stockley for providing an electric clock for the Clubhouse and to George Gummer for installing the same.

ONWARD, HORNETS, ONWARD!

### SCHOOLBOY FOOTBALL

Fine progress is being made with schoolboy football. On Saturday there was a match between Lowerplace and Brimrod and on Wednesday, March 31st, Newbold will play a mixed side. Before the end of the season it is hoped to be able to stage a curtain-raiser before one of the Hornets first team games.

### EASTER WISHES

A Happy Easter to all who think well of the Hornets, with good things to come—perhaps Wembley!

LISTEN TO  
THE RESULTS  
ON A

 **RADIO**

FROM

MILLDALE ELECTRIC CO., LTD.

6 CHEETHAM STREET

ROCHDALE

Phone 47048