

Telephone: MAIn 2972

# Haigh's Marine Stores Limited

Registered Office: 21, CROSS STREET, OLDHAM

## IRON & STEEL MERCHANTS

Bulk Buyers of  
MIXED RAGS, SCRAP LEAD, COPPER, BRASS, COPPER WIRE, Etc.

**DRAWING ROPES, STRING, HEMP, TWINE,  
COTTON, ROLLER CLOTH, CLEARER CLOTH,  
PAPER, TYRES, TUBES**

All goods collected

Terms: CASH

Distance no object

CROFTBANK MILL - - OLDHAM

### OLDHAM F.C.

	Opponents	Venue	
Oct. 31	Dewsbury	.....Away	
Nov. 7	St. Helens	.....Home	3-0
14	Whitehaven	.....Away	
21	Bramley	.....Home	2-30
28	Belle Vue R.	.....Away	
Dec. 5	Barrow	.....Home	2-30
12	St. Helens	.....Away	
19	Workington	.....Home	2-30
25	Swinton	.....Home	2-30
26	Workington	.....Away	
Jan. 2	Hull	.....Away	
9	Salford	.....Home	2-30
16	Huddersfield	.....Home	2-30
23	Liverpool	.....Away	
30	Whitehaven	.....Home	3-0
Feb. 6	1st Rd. R.L. Cup (1st Leg)		
13	1st Rd. R.L. Cup (2nd Leg)		
20	Warrington	.....Away	
27	Leigh	.....Home	3-0
Mar. 6	2nd Rd. R.L. Cup		
13	Barrow	.....Away	
20	Hull	.....Home	3 0
27			
Apr. 3	Warrington	.....Home	3-0
10	Wigan	.....Away	
16	Swinton (G.F.)	.....Away	
17	Belle Vue R. (E.S.)	.....Home	3-0
19	Rochdale H.	.....Away	

## BRADDOCK'S CHEMISTS LTD.

Top of Manchester Street  
OLDHAM

Also at 193 Huddersfield Road, Oldham  
and 9 Market Street, Royton

## HAIR RESTORER

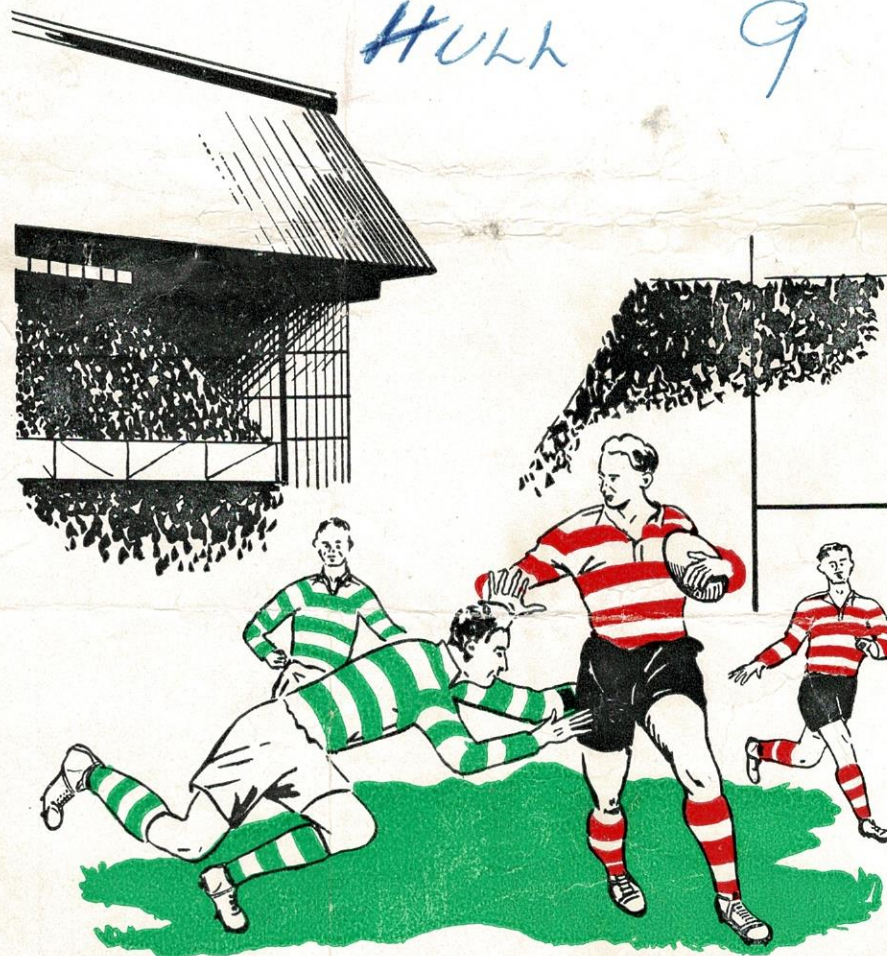
The Original Formula

For increasing the growth of the Hair,  
preventing it from falling out, and  
restoring grey or faded Hair to its  
natural colour

IT IS NOT A DYE

Per 1/8<sup>1</sup>/<sub>2</sub>d. Bottle

# OLDHAM <sup>21</sup> FOOTBALL CLUB



PROGRAMME...THREEPENCE

... For good food

**U.C.P.**

Shops &amp; Restaurants

You'll do better at a U.C.P. Restaurant  
in fact "A WINNER EVERY TIME"

**19 HIGH STREET, OLDHAM**



And many Shops and Restaurants  
in Manchester and throughout the North

**OFFICIALS**

President: Councillor W. HOWARD, M.B.E., J.P.

Vice-President: J. COULTHARD, Esq.

Hon. Treasurer: A. CORDWELL, Esq.

Committee:

Messrs. F. W. Ashworth, A. F. Campbell, F. S. Holt, T. Hurtle, F. Knowles,  
J. W. Lewthwaite, F. Ridgway, E. Thomas, E. Watkins

Club Doctor: Dr. JOHN OLIVER

Secretary: Mr. H. SUMMERSCALES

Pavilion Telephone No.: MAIn 4865

**For all travel requirements  
at HOME and ABROAD**

Inclusive and Independent Tours, Rail, Air and Sea Bookings,  
Passports, Currency, Inclusive Party Outings, etc.

Book through



**FOUNDRY STREET  
OLDHAM**

Telephone: Oldham Main 6063

**OLDHAM v. HULL****WATERSHEDDINGS NEWS & VIEWS**

Our last home match gave us the knock-out from the Rugby League Challenge Cup, and, much to the disappointment of our members and supporters, this is not to be our Wembley year.

The manner in which we lost the match was a tragedy, a glaring interception, or using a much better term, shall we call it a pass to an opponent, put paid to our ambitions. We had openings and opportunities to win the match, but failed at the finishing off point to take advantage of the openings which we had created, and finally we were "pipped at the post" by seven points to four.

Much as our deficiency was in not scoring tries, our opponents never appeared to be capable of driving home any scoring chances that came their way, the one fatal pass, or interception, proved our undoing, and our sympathy goes to the player who unfortunately made this error. Mistakes will happen on the field of play, and it will always be so, but it is poor consolation to us that we were dismissed from a cup-tie, especially with home advantage. A team that cannot win all its home matches, and win away in its turn, stands a very poor chance of the season's honours.

Our match at Barrow on Saturday last, although we lost by twelve points to six, gave us little consolation in knowing that our team gave a much improved display as against the previous week against Warrington. We did score two tries, but here, once again, if we had taken advantage of the scoring opportunities and with a little more steadiness in watching the forward pass, we should have returned with an away victory.

**OUR VISITORS**

To-day, we welcome our visitors from Hull—one of their infrequent visits, unfortunately, from a playing point of view. We are sure of a most attractive match, as our visitors are known for the open play which they always present.

On January 2nd, we visited Hull with a depleted team and lost the match 23 points to 3, so we have some leeway to make up. We hope that to-day's game will prove equal to our previous meetings with Hull at Watersheddings, then we shall have no cause for complaint.

Our team will have to give of their best as we are up against opponents who are very strong forward and have some very capable backs to finish off good movements.

Telephone: BLA 6985

# H. C. COOKE

(SPORTS) LTD.

LEADING SPORTS OUTFITTERS TO THE R.L.

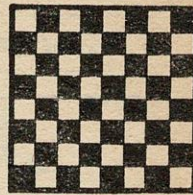
26 JOHN DALTON ST., &  
68 CORPORATION ST., MANCHESTER

RUGBY JERSEYS at last season's prices from 16/6  
STOCKINGS in hooped designs from 4/11 per pair  
R. L. PATTERN SHORTS from 11/6 per pair  
All sizes of Cotton Oxford and  
Elmer Cotton Rugby Boots in stock

**COOKE'S of MANCHESTER**

Suppliers of the 1952 Finalists' complete Kit

There's a  
Wilson's Ale  
to suit  
every taste



THE SIGN OF  
QUALITY



WILSON'S BREWERY LTD., MANCHESTER, 10

# G. Barlow & Sons

LIMITED

Saloon Coaches for away matches  
Land Cruises and Pleasure Trips  
Weddings and Tours arranged  
also Complete Funeral Furnishers

PERSONAL ATTENTION TO ALL ORDERS

Telephone: MAIn 4301

UNION STREET WEST GARAGE,  
OLDHAM

# Tom Shaw & Son

(Greenfield) Ltd.

Luxury Coaches for all occasions  
Operators of 'Pleasureways Tours'

151 UNION ST., OLDHAM

Telephone: MAIn 5033/4

You cannot do better than...  
book your next Cup Final Party,  
Day Outing or Holiday Tour  
at...

## STANTON'S TRAVEL AGENCY

Official Travel Agents to the Oldham F.C.

112 UNION ST., OLDHAM

ESTABLISHED OVER FIFTY YEARS

## Wellington Inn

T. W. HURTLEY (Tommy)

What you want...

Good Company, Wilson's Fine Beers  
and Stouts, Sporty Chatter,  
Wines and Spirits

Ripponden Road - Oldham

Telephone: MAIn 1939

### OLDHAM 21

Red and White

- 1 GANLEY, W. B. 6 GOALS
- 2 CRACKNELL, R. 2 TRYS
- 3 MITCHELL, W. S. 1 "
- 4 DAVIES, A.
- 5 O'GRADY, T.
- 6 FEATHER, J.
- 7 STIRRUP, F.
- 8 SMITH, T. A.
- 9 KEITH, J.
- 10 TOMLINSON, A.
- 11 WINSLADE, C.
- 12 LITTLE, S. D.
- 13 GOLDSWAIN, B. V.

Reserves: Ogden, H; Barrow, R.

### HULL 9

Black and White

- 1 HUTTON, C. 3 GOALS
- 2 BOWMAN, S. K.
- 3 RICHES, W. 1 TRY
- 4 TURNER, R. C.
- 5 WATTS, I. J.
- 6 ~~DRAKE, J. G. MOAT~~
- 7 KNAPP, C.
- 8 SCOTT, M.
- 9 HARRIS, P. T.
- 10 COVERDALE, R.
- 11 MARKHAM, H.
- 12 HOCKLEY, N. W.
- 13 ~~WHITTELEY, J. W.~~

DRAKE

Referee: Mr. A. HOWGATE of Dewsbury

Touch Judges:

Mr. W. Ainscough, Wigan (Red)

Mr. A. Bolton, Knutsford (Blue)

For...

REPAIRS & RENOVATIONS

Telephone: MAIn 4210

## Frank L. Ridgway

PLUMBING  
CONTRACTOR

53 Henshaw Street, Oldham

## REGENT HOTEL

Proprietor: James S. Parkinson

Make the REGENT the rendezvous for  
first class entertainment

MARKET PLACE and Corner of  
MANCHESTER ST. - OLDHAM

Telephone: MAIn 3527

## F. Knowles & Co. Ltd.

TEXTILE MACHINISTS

Dealers in all classes of Opening, Card  
Room, Spinning, Winding & Doubling  
Machinery

Textile Machinery Bought and Sold  
on Commission

GLOWICK ROAD, OLDHAM  
COMMERCIAL WORKS.

Telephone: MAIn 3797

Royal Exchange Tuesday and Friday, Pillar J2

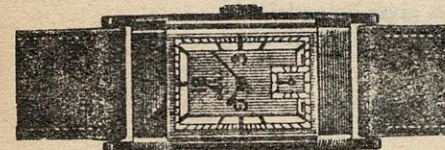
## THE GRAND NATIONAL

SATURDAY, 27th MARCH

### AINTREE 9/-

- Oldham Werneth ..... dep. 10-0 a.m.  
 " Central ..... dep. 10-5 a.m.  
 " Mumps ..... dep. 10-11 a.m.  
 Shaw & Crompton ..... dep. 10-19 a.m.  
 Return AINTREE (Racecourse) ... 5-43 p.m.

BRITISH RAILWAYS



You can depend on a watch  
bought at

JOSEPH HOWELL & SONS

THE JEWELLERS DOWN MUMPS

8-10 MUMPS, OLDHAM MAIn 4804

FOOTBALL  
MATCHES

PRIVATE PARTIES  
specially catered for

## SANDY'S TOURIST AGENCY

Proprietor: A. F. Campbell

Official Agents for  
AUTY'S - ARROWSMITH'S - BATTY-HOLT  
SMITH'S CONTINENTAL & BRITISH  
and SHEARING'S TOURS

Agent for all BUTLIN'S HOLIDAY CAMPS

5 ABBEY HILLS ROAD  
OLDHAM 'Phone: MAIn 6912

## T. O'GRADY

Congratulations to Terence O'Grady in being selected for the Tour of Australia and New Zealand—it is a great honour to the player and for the club.

O'Grady was born on April 10th, 1934, and is just going into twenty. He is, however, not the baby of the team—this falls to Billy Boston of Wigan, he will be twenty years of age on August 11th, next. O'Grady signed professional forms for this club on November 29th, 1951, and is a product of St. Mary's Schoolboys and St. Mary's Continuation teams. He played two games with our now defunct "B" team before turning out with the "A" team. He has played three times for Lancashire and once for England—a good record for a boy not yet twenty years of age.

In the early part of the season he appeared to lose form and was somewhat under a cloud, there may be several causes for this, it sometimes happens that a player is troubled in mind, he may be burdened by business or domestic grief, and sometimes such things have an overwhelming power. Such was his physical power that he fought his way back again in the eyes of the selectors and a rich prize has been awarded to him. One great asset in his favour is that he is the only winger going who can play on either flank.

We wish him every success on the playing fields of Australia and New Zealand, and a safe return.

## RE-ARRANGED MATCH

The postponed first team match against Whitehaven on January 30th will now be played at Watersheddings on Monday, April 12th, kick-off 6 p.m.

In the event of Warrington being successful against York to-day, our first-team league match against Warrington scheduled to be played at Watersheddings on Saturday, April 3rd, will be postponed, owing to this date being allocated to the Challenge Cup semi-finals. An evening match will have to be arranged.

## HALF-TIME SCORES

The Half-time Scores of the Matches given below will be shown on the Score Board immediately they are received

**A** HUNSLET  
HUDDERSFIELD

**D** WIGAN  
HALIFAX

**B** LEEDS  
WORKINGTON

**E** SALFORD  
ROCHDALE H.

**C** WARRINGTON  
YORK

**F** STOKE  
ATHLETIC

Keep dry with . . .

# "STONE-DRI"

(Registered)

## WEATHERWEAR

Branches at WAKEFIELD, ROCHDALE,  
ASHTON, BRADFORD, LEIGH, Etc.

Direct Raincoat Co.  
102 Yorkshire St., Oldham

SHOP & OFFICE FITTER — POLISHING

## WALTER MILLS

(Proprietor: A. Mills)

Joiner, Cabinet Maker, Etc.

Repairs and Alterations a Speciality

5 GARFITT ST., OLDHAM  
off ROCK STREET

Terms: MONTHLY — Phone: MAIn 3574

## R. Boardman & Co.

**ALE & STOUT BOTTLERS**  
Mineral Water Manufacturers

Try our . . .  
"SPECIAL" GRAPE FRUIT CRUSH  
Obtainable in the Pavilion

## ASHTON-U-LYNE

Telephone: ASHTon 2310

Brands of Petrol for Sale  
NATIONAL BENZOLE, ESSO EXTRA, CLEVECOL,  
B.P. SUPER, DOMINION and POWER

DIESEL FUEL SUPPLIERS

## Oldham Service Station

(Proprietors: William Leigh Ltd.)

Bottom o'th' Moor, Oldham

*Our Motto—"Service to the Public"*

ALL GRADES OF OIL &  
ACCESSORIES IN STOCK

Hours of Business:  
Weekdays: 7-30 a.m. to 9-0 p.m.  
Sundays: 8-30 a.m. to 9-0 p.m.