

Open 8 a.m. to 12 p.m. daily

Phone : PEN. 2635

BARRFIELD GARAGE

(Proprietor : S. W. Lenegan)

Bolton Road, Salford 6



Rapid
Battery
Charging

ALL
MAKES OF
TYRES
SUPPLIED

A sign of all that's
best in garage service

SHELL TECALEMIT SERVICE

J. ROBERTS & SONS, PRINTERS, SALFORD.

SALFORD FOOTBALL CLUB



OFFICIAL PROGRAMME THREEPENCE

1454-55

SALFORD FOOTBALL CLUB CO.
(1914) LTD.

President : J. W. P. GROVES, Esq.

Directors :

J. B. GOLDSTRAW, (Chairman),
J. W. HAMMOND,
W. H. HUGHES, W. S. THOMAS, H. POWLAND,
G. S. CADMAN, R. T. BEECH,
R. W. ASHWORTH,

Secretary-Manager : J. A. S. DOUGLAS

Tel. PENDleton 1515

Ground : THE WILLOWS, WEASTE

Colours : Red Jerseys, White Pants.

Let us Furnish your house . . .

REDFERNS

Complete House Furnishers

18-20 TRAFFORD ROAD, SALFORD 5

Telephone: TRA 0943

Authorised Hoover Dealers

SALFORD
versus
OLDHAM

Nº 928

WEDNESDAY, AUGUST 25th, 1954. Kick-off at 7-0 p.m.

WELCOME TO OLD FOES.

Once again it is our pleasure to entertain our old friends from Oldham—the sternest of opponents, but always good sportsmen. This evening's engagement is the 18th meeting since the war. As the following record reveals, we stand on the debit side of victories. We are hoping to reduce the margin, but, as you will observe from the fact that both last season's engagements were drawn, there is little between us and everything points to a close and interesting game, providing the playing conditions are suitable.

1945-26	(away) lost	2-1-7	2-2-10
	(home) lost	1-2-8	5-5-25
1946-47	(home) lost	1-1-5	1-4-14
	(away) lost	0-2-6	2-4-16
1947-48	(away) lost	0-0-0	4-6-26
	(home) won	0-3-9	0-0-0
1948-49	(home) won	4-4-20	4-1-9
	(away) draw	1-0-2	1-0-2
1949-50	(home) won	1-3-11	1-0-2
	(away) won	1-2-8	1-1-5
1950-51	(away) lost	2-2-10	2-4-16
	(home) won	3-2-12	3-1-9

SALFORD
AND
LUCKETTI'S ICE CREAM
WANTS SOME LICKING

Sole Selling Rights on this Ground

1951-52	(home) lost	1-1-5	5-3-19
	(away) draw	3-1-9	3-1-9
1952-53	(away) lost	0-1-3	7-6-32
	(home) lost	2-0-4	1-2-8
1953-54	(home) draw	4-1-11	4-1-11
	(away) draw	1-0-2	1-0-2

Summary : Played 18, won 5, lost 9, drawn 4.

Like our Tom McKinney, Oldham's Terry O'Grady is in Australia, and we hope to welcome them home next Friday.

Bernard Ganley, the son of the famous Bert Ganley, of Leigh and Huddersfield fame, has become one of the leading full-backs in the game and an accurate goal kicker. Dick Cracknell, too, is well known. He also is the son of a distinguished father who gave outstanding service to Swinton and Huddersfield.

There are few better centres in the game than Alan Davies, and Roland Barrow is a player who is making rapid progress as his partner. Bryn Goldswain, who was formerly connected with Hull K.R., is well known to us all, as also are Jack Keith, Arthur Tomlinson and Charlie Winslade.

At the time of writing these notes the composition of the Oldham side is unknown, and if Frank Stirrup plays he will be no stranger.

Read **EXCLUSIVE REPORTS** by

TOM BERGIN

on Salford Matches and Matters

in the

SALFORD CITY REPORTER

Fullest Reports — Exclusive News — Photographs

CLUB GOSSIP.

Better news is to hand concerning Brian Keavney, who is under treatment in a military hospital for an eye complaint.

In the absence of Jack Davies at Dewsbury, Joe Houghton filled the breach with great credit. Jack Rogers, Jim Grainger and Harry Greenwood also played exceedingly well under most difficult conditions.

There are rumours that our old friend Jack Brown will be leaving Huddersfield and may rejoin a Lancashire side.

Norman Herbert, the Belle Vue forward, has not yet re-signed for the Rangers.

Ken Gee, the Wigan forward, has begun his 22nd season. What a remarkable forward he has been !

It denotes remarkable fortitude for a player to return to the game with such enthusiasm as Tommy Bradshaw, the Leigh half-back, after so many shoulder accidents. Our Tommy Harrison comes off the same stock.

Johnny Lawrenson, the Swinton and former Wigan and Workington utility back, is very early in the wars. He dislocated his left shoulder during the game with Hunslet.

NO LIMIT!

★ SINGLES ★ DOUBLES ★
★ TREBLES ★ ACCUMULATORS

★
We pay all you win!



BILLY ESTD. 1902
BRADY
& SONS

PROPRIETOR:- W. BRADY

Members B.P.A. and Manchester & District Bookmakers Association

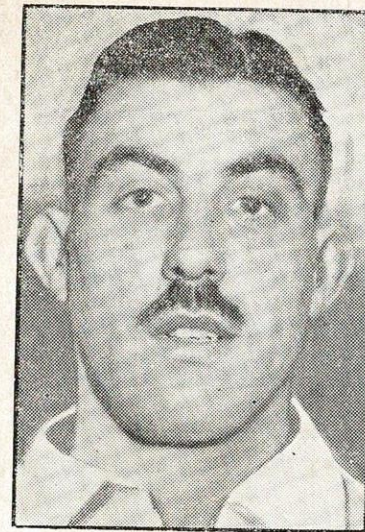
145 Chapel Street
SALFORD.3

Near Salford Railway Station

43a EAST PHILLIP ST. BLA
SPRINGFIELD LANE 0218
SALFORD, 3 8400

BLA
4498
1996

Telegrams SALFORDIAN, Manchester

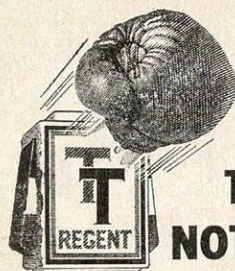


BRYN GOLDSWAIN.

Our photograph to-day is of Bryn Goldswain, who signed for Oldham in August, 1949, from Hull K.R. at a fee of £2,000. After only three matches for Oldham he was made captain.

He has played more than 160 times in his five full seasons. Last season he played in every game, with the exception of one when he was omitted—but he was hastily brought back to the side. Most of his absences since Bryn has been with Oldham have been owing to his International appearances for Wales, for whom he has played over a dozen times. He has had the honour of being captain of Wales on a number of occasions.

He might never have played R.L. football, for he was invited for trials with Wolverhampton Wanderers after completing his war-time commission in the R.A.F.

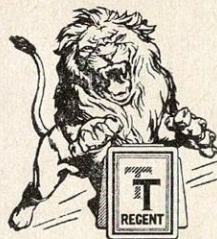


T Plus VOLATANE CONTROL
PACKS MORE PUNCH!

T.T. THE PETROL WITH
NOTHING MISSING
guarantees perfect
engine performance
under all conditions

Fill up with T.T. at any Regent Dealer
 and prove to yourself that

BRITISH T.T. PETROL IS BRITAIN'S FINEST
 V.C.4



SEASON TICKETS

NOW ON SALE

AT THE PAVILION

A REMINDER OF 1953-54.

Just to remind you how the clubs finished in the Championship last season, here is the table.

CHAMPIONSHIP TABLE.

	P.	W.	D.	L.	Points		
					For	Agst.	Pts.
Halifax	36	30	2	4	538	219	62
Warrington	36	30	1	5	663	311	61
St. Helens	36	28	2	6	672	297	58
Workington T.	36	29	0	7	604	333	58
Hull	36	25	0	11	685	349	50
Huddersfield	36	24	0	12	689	417	48
Wigan	36	23	1	12	688	392	47
Barrow	36	23	0	13	574	377	46
Bradford N.	36	22	0	14	628	414	44
Leeds	36	22	0	14	766	517	44
Wakefield T.	36	19	1	16	671	508	39
Oldham	36	17	4	15	504	366	38
Leigh	36	19	0	17	547	459	38
Featherstone	36	18	2	16	478	431	38
Hunslet	36	19	0	17	455	451	38
Widnes	36	16	3	17	420	431	35
York	36	17	0	19	412	401	34
Keighley	36	15	3	18	473	533	33
Rochdale H.	36	14	3	19	404	457	31
Dewsbury	36	14	3	19	432	508	31
Whitehaven	36	14	1	21	362	544	29
Salford	36	13	2	21	370	438	28
Swinton	36	13	1	22	341	513	27
Batley	36	13	1	22	367	658	27
Bramley	36	11	3	22	437	746	25
Castleford	36	11	1	24	437	728	23
Belle Vue R.	36	7	2	27	307	714	16
Doncaster	36	5	2	29	340	840	12
Hull K.R.	36	5	2	29	298	737	12
Liverpool C.	36	4	0	32	304	777	8

BEFORE & AFTER THE MATCH

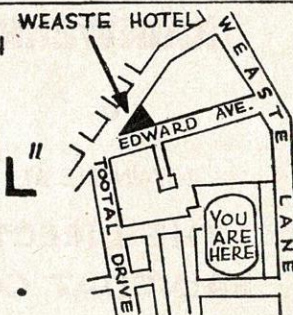
CALL AT

THE

"WEASTE HOTEL"

EDWARD AVENUE .

THRELFALLS ALES .



Keep
up-to-the-minute on
RUGBY LEAGUE

with
JIMMY BREEN
in the
EVENING CHRONICLE

and every
Saturday in the

Evening Chronicle
FOOTBALL PINK
FINAL

Most Results—Best Reports

Keep Dry

with . . .

"STONE-DRI"

(Regd.)

RAINWEAR

●
OBTAINABLE AT

**THE DIRECT
RAINCOAT CO.**

Branches in all Main Towns

gate 10,000



FOR THE LATEST AND BRIGHTEST
RUGBY LEAGUE
REPORTS—READ

JOE EGAN

in the

SUNDAY EXPRESS

Referee : Mr. N. T. RAILTON (Wigan)

Touch Judges : Messrs. E. Bleasdale (Warrington), W. Johnson (St. Helens)

SALFORD 11pts

Colours—Red

1. SMITH
2. HARTLEY
3. FAIRHURST
4. ROUGHLEY
5. BAINES 1TRY
6. DAVIES 4 goals
7. HARRISON
8. MARSTON
9. BOARDMAN
10. MOSES/ALDER
11. GRAINGER
12. GREENWOOD
13. ROGERS

OLDHAM 2

Red and White, Blue Shorts

1. GANLEY 1 goal
2. CRACKNELL
3. FEARIS
4. DAVIES
5. LOMAS
6. DALEY
7. PITCHFORTH STIRRUP
8. SMITH
9. KEITH
10. TOMLINSON, A.
11. WINSLADE
12. MURRAY
13. GOLDSWAIN

ROCHDALE HORNETS v. SALFORD

SATURDAY, 4th SEPTEMBER

ROCHDALE 1/9

Manchester Victoria depart 1-27 or 2-15 p.m.

These Tickets are also available Outward & Return by any train.

BRITISH RAILWAYS

Very bad
game

J. Sackfield

**RED
ROSE
ALES**



"Wherever you go there's a
RED ROSE HOUSE
and it's good!"

AND THERE YOU'LL ENJOY
**LIGHT AMBER
DARK AMBER
R.R. STOUT and S.P.A.**

**LANCASHIRE UNITED
TRANSPORT LIMITED**

**PRIVATE PARTIES
TO ALL AWAY MATCHES**

Special Rates
for Season Bookings



Excursions will be operated
to all away matches

WATCH THIS SPACE FOR FULL
DETAILS

Or Write or 'Phone
SWInton 2295

Head Office : Atherton 36

THE AUSTRALIAN TOUR.

IN AUSTRALIA.

			P.	P.
May	19—Western Division	Won ...	29	11
	22—Newcastle	Lost ...	10	11
	26—Riverina	Won ...	36	26
	29—Sydney	Lost ...	25	32
	30—Southern Division	Drawn	17	17
June	5—New South Wales	Lost ...	11	22
	12—FIRST TEST MATCH (Sydney)	Lost ...	12	37
	14—Brisbane	Won ...	34	4
	19—Queensland	Won ...	34	32
	20—Wide Bay.....	Won ...	60	14
	22—Southern Zone	Won ...	28	7
	24—Northern Zone	Won ...	39	18
	27—North Queensland	Won ...	39	13
	29—Central Queensland	Won ...	21	12
July	3—SECOND TEST MATCH (Brisbane)	Won ...	38	21
	4—Toowoomba	Won ...	25	14
	7—Northern New South Wales	Won ...	44	14
	10—New South Wales (abandoned)		3	17
	17—THIRD TEST MATCH (Sydney).....	Lost ...	16	20

IN NEW ZEALAND.

July	22—Maoris XIII	Won ...	14	4
	24—FIRST TEST MATCH (Auckland) ...	Won ...	27	7
	27—Wellington	Won ...	61	18
	31—FIRST TEST MATCH (Greymouth)	Lost ...	14	20
	<i>2ND</i>			
Aug.	4—South Island	Won ...	32	11
	7—Canterbury	Won ...	60	14
	9—North Island	Won ...	42	7
	11—South Auckland	Won ...	26	14
	14—THIRD TEST MATCH (Auckland)...	Won ...	12	6
	16—Auckland	Lost ...	4	5

Totals 831 483

Played 30, Won 20, Lost 8, Drawn 1, Abandoned 1.

ALBION TRACK

SALFORD

Every Tuesday and
Friday at 7-15 p.m.

UNDER N.G.R.C. RULES

DAY AND NIGHT SERVICE

WILL'S MOTORS

(Prop. S. P. WILLIAMS)

Car Hire Service

Weddings, Hospitals, Stations etc.

85 Stowell Street

SALFORD 5

Phone: PEN 1999

RECORDS OF OTHER TOURS.

1910. *Captain*—J. Lomas. *Managers*—J. H. Houghton and J. Clifford.
Played 18, Won 13, Lost 4, Drawn 1. Pts. for 527, Agst. 294.
1914. *Captain*—H. Wagstaff. *Managers*—J. H. Houghton and J. Clifford.
Played 18, Won 15, Lost 3, Drawn 0. Pts. for 535, Agst. 196.
1920. *Captain*—H. Wagstaff. *Managers*—J. Wilson and S. Foster.
Played 25, Won 21, Lost 4, Drawn 0. Pts. for 738, Agst. 328.
1924. *Captain*—J. Parkin. *Managers*—E. Osborne and J. H. Dannatt.
Played 27, Won 21, Lost 6, Drawn 0. Pts. for 738, Agst. 375.
1928. *Captain*—J. Parkin. *Managers*—E. Osborne and G. F. Hutchins.
Played 25, Won 18, Lost 6, Drawn 1. Pts. for 578, Agst. 313.
1932. *Captain*—J. Sullivan. *Managers*—G. F. Hutchins and R. F. Anderton.
Played 26, Won 23, Lost 2, Drawn 1. Pts. for 782, Agst. 259.
1936. *Captain*—J. Brough. *Managers*—R. F. Anderton and W. Popplewell.
Played 25, Won 22, Lost 3, Drawn 0. Pts. for 611, Agst. 254.
1946. *Captain*—A. J. Risman. *Managers*—W. Popplewell and W. Gabbatt.
Played 27, Won 21, Lost 5, Drawn 1. Pts. for 783, Agst. 276.
1950. *Captain*—E. Ward. *Managers*—T. Spedding and G. Oldroyd.
Played 25, Won 19, Lost 6, Drawn 0. Pts. for 764, Agst. 266.

Telephone : TRAfford Park 1707

For AWAY Matches

TRAVEL BY

Martin's Coaches Ltd.

173 Cross Lane, Salford 5

Telephone: BLA 0040

POWLAND & SMITH LTD.

Builders & Contractors

HAMPSON STREET - SALFORD 5

CUP-TIE REFEREES.

Yorkshire referees have been appointed for the first round Lancashire Cup-ties on September 11th, as follows :—

Blackpool Borough v. Belle Vue. A. Howgate (Dewsbury).
Oldham v. County Amateurs. E. Hopkins (Leeds).
Leigh v. Wigan. A. Hill (Dewsbury).
Liverpool City v. Salford. H. Squires (Ossett).
Rochdale Hornets v. Barrow. T. Armitage (Huddersfield).
St. Helens v. Whitehaven. S. Adams (Hull).
Widnes v. Warrington. M. Coates (Leeds).
Workington v. Swinton (6-15 p.m.). R. Gelder (Wakefield).

The second round ties will be played in mid-week between September 20th and 23rd.

Lancashire meet Cumberland at Wigan on Wednesday, Sept. 15th, kick-off at 6-15 p.m. The Lancashire team will be chosen on August 31st.

This is the Shop that QUALITY Built

H. BESCOBY & Co. Ltd.

Agent for
Shirts & Sports-
wear by
OLD ENGLAND
VAN HEUSEN
DOUBLE TWO
AERTEX
BUKTA

Cromwell House
1/3 CROMWELL RD. PENDLETON
Tailors, Drapers, Outfitters
Footwear Specialists
& House Furnishers

Phone PEN. 2688

Agent for
Footwear by
JOHN WHITE
NORVIC
PORTLAND
DEVONSHIRE
WHITE QUEEN
CYNELLA

OUR NEXT HOME MATCH

BARROW

SATURDAY, 28th AUGUST

at 3-0 p.m.

TELEPHONE BLA 1626

ESTABLISHED OVER 100 YEARS

JOHN ROBERTS & SONS

Printers and Stationers

168 CHAPEL STREET
SALFORD 3

Fixture List and Results

FIRST TEAM

		F.	A.
1954.			
Aug. 7—Swinton	H.	3	12
	(Red Rose Cup)		
14—Blackpool	H.	40	3
17—Dewsbury	A.	7	0
21—Castleford	A.	0	19
25—Oldham	H.	11	2
28—Barrow	H.		
Sept. 4—Rochdale H.	A.		
11—Liverpool C.	A.		
	(Lancs. Cup)		
18—			
25—Castleford	H.		
Oct. 2—Dewsbury	H.		
9—Featherstone	A.		
16—St. Helens	H.		
23—Workington	A.		
30—Featherstone	H.		
Nov. 6—Warrington	A.		
13—Rochdale H.	H.		
20—Liverpool C.	A.		
27—Leigh	H.		
Dec. 4—Oldham	A.		
11—Widnes	H.		
18—Whitehaven	A.		
25—Wigan	A.		
27—Whitehaven	H.		

1955.			
Jan. 1—Swinton	A.		
8—Workington	H.		
15—Belle Vue	A.		
22—Barrow	A.		
29—Belle Vue	H.		
Feb. 5—Liverpool C.	H.		
12—R.L. Cup, 1st Rd.			
19—Blackpool	A.		
26—Hull K.R.	H.		
Mar. 5—R.L. Cup, 2nd Rd.			
12—Hull K.R.	A.		
19—			
26—St. Helens	A.		
April 2—Warrington	H.		
8—Leigh	A.		
9—Swinton	H.		
11—Wigan	H.		
16—Widnes	A.		

"A" TEAM

		F.	A.
1954.			
Aug. 14—Blackpool	A.	8	19
21—Rochdale H.	A.	13	5
	(L.S.C.)		
28—Barrow	A.		
Sept. 4—Rochdale H.	H.		
	(L.S.C.)		
11—			
18—Oldham	A.		
25—			
Oct. 2—Swinton	A.		
9—Warrington	H.		
	(Friendly)		
16—St. Helens	A.		
23—Workington	H.		
30—			
Nov. 6—Warrington	H.		
13—Rochdale H.	A.		
20—Liverpool C.	H.		
27—Leigh	A.		
Dec. 4—Oldham	H.		
11—Widnes	A.		
18—Whitehaven	H.		
25—Wigan	H.		

1955.			
Jan. 1—			
8—Workington	A.		
15—			
22—Barrow	H.		
29—Warrington	A.		
	(Friendly)		
Feb. 5—Liverpool C.	A.		
12—			
19—Blackpool	H.		
26—Whitehaven	A.		
Mar. 5—Wigan	A.		
12—Rochdale H.	H.		
19—Swinton	H.		
26—St. Helens	H.		
April 2—Warrington	A.		
8—Leigh	H.		
9—			
11—			
16—Widnes	H.		

H. C. COOKES

SPORTS DEPOT Ltd.

26 John Dalton St., M/c. 2

Tel. BLA. 6985

For all Sports Equipment.

Rugby Footballs, Jerseys,
Shorts, Boots, &c.

Suppliers to leading R.L. Clubs.

Established 1907

J. BLACKSHAW & SONS

Joiners, Builders and
Contractors

WEST WYNFORD ST.
SALFORD 5

Tel. PENdleton 2454

NEXT WEEK'S FIXTURES.

Tuesday, August 31st.

Keighley v Huddersfield (6-30)

Oldham v Liverpool City (7-0)

Wednesday, September 1st.

Keighley v Bramley (6-30)

Saturday, September 4th.

Barrow v Oldham

Bramley v Huddersfield

Castleford v. Belle Vue Rangers

Dewsbury v. Bradford Northern

Halifax v. St. Helens

Hull K.R. v. Featherstone Rovers

Hunslet v. Wakefield Trinity

Rochdale Hornets v. Salford

Swinton v. Liverpool City

Widnes v. Batley

Wigan v. Keighley

Workington Town v. Warrington

York v. Hull

17 Blackpool Borough v. Leigh

44

Doncaster v. Leeds

BURTONS (PEEL GREEN) LTD.

Practical Bakers and Confectioners
for "Modern Style" Confectionery

267 MONTON ROAD
MONTON GREEN (Eccles 1422)

Head Office and Bakery
453 LIVERPOOL ROAD
PEEL GREEN (Eccles 3110)

TOUR PROFITS.

The statement that the Australian and New Zealand Tour has yielded a profit of £48,000 is apt to be misleading. The figure quoted represents the Rugby League's share of the gates and is a purely gross amount. In 1950 the figure was £22,400, but the net profit only amounted to £10,350.

Still, it is a big advance on all previous tours, due to the fact that Entertainment Tax has been abolished. It means, too, that the player will receive a bigger bonus than their predecessors, probably between £250 and £300—quite a little nest-egg even after the deduction of Income Tax.

Here is a list of the net receipts and bonuses of previous tours. Observe how they have risen during the years.

Year	Net Profit	Players' Bonus
1910	£1,200	£30
1914	£4,000	£68
1920	£6,700	£82
1924	£7,050	£91
1928	£10,607	£136
1932	*£6,161	£80
1936	£7,863	£100
1946	£9,647	£123
1950	£10,350	£159

* Drop due to introduction of Tax.

BROWN BULL HOTEL

Fully Licensed Draught Bass Marston's Burton Ales
CORNER OF NEW BAILEY ST. and CHAPEL ST. (nr. Salford Station)

W. A. WILLIAMS
(Ex Captain of Salford R.F.C. and
Welsh International)



WE ARE PROUD OF THE SERVICE WE GIVE THE

SALFORD R.F.C.

AND ALL OUR OTHER CUSTOMERS

Whitworth Park Laundry

(W. WATKINS & SON, Proprietors)

**150/152 LLOYD STREET
MOSS SIDE**

FAMILY WASH — 5/6 per doz.

Ready Same Week

Branches at 114 Ellor Street, Pendleton — 35b Gt. Clowes St., Salford

Van Collections in all parts of Manchester and Salford.