

Telephone : MAIn 2972

Haigh's Marine Stores Limited

Registered Office : 21 CROSS STREET, OLDHAM

IRON AND STEEL MERCHANTS

Bulk Buyers of

MIXED RAGS, SCRAP LEAD, COPPER, BRASS, COPPER WIRE, Etc.

**DRAWING ROPES, STRING, HEMP, TWINE,
COTTON, ROLLER CLOTH, CLEARER CLOTH,
PAPER, TYRES, TUBES**

All goods collected

Terms : CASH

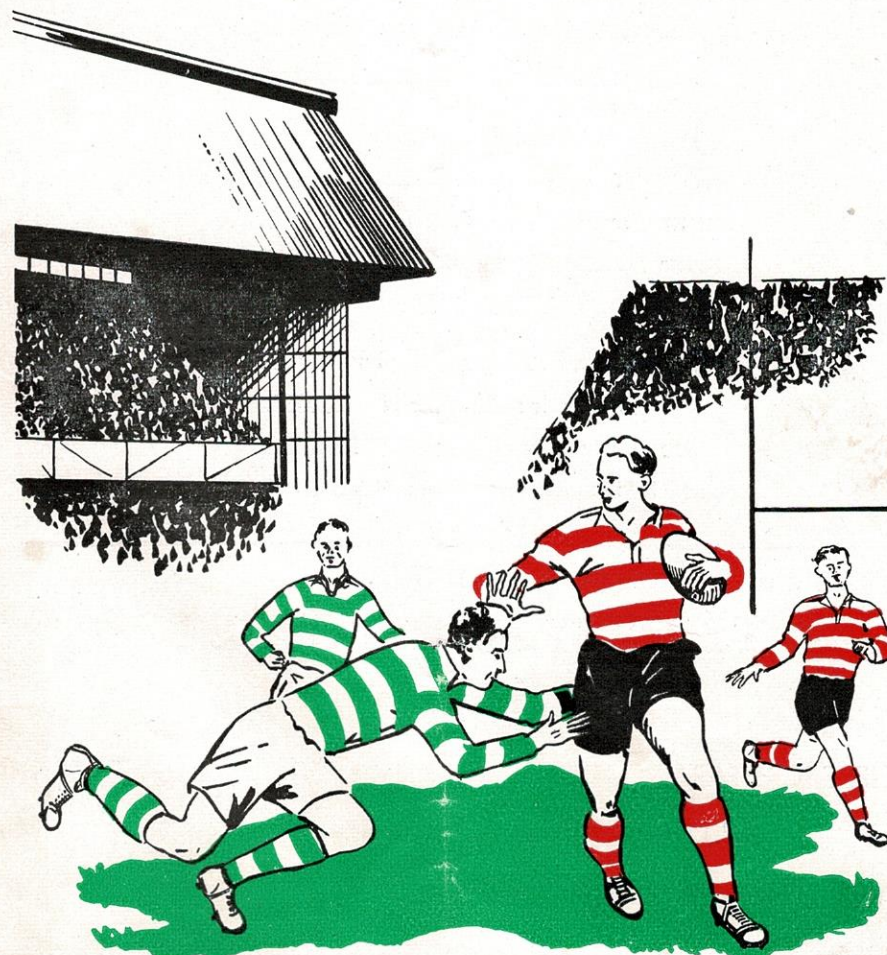
Distance no object

CROFTBANK MILL . . . OLDHAM

Fixtures for the Season

1954-55	Opponents	Venue	K.O.	1954-55	Opponents	Venue	K.O.
Aug. 7—Rochdale (Charity)	Home	3-0	Dec. 18—Keighley	Away			
14—Wakefield T.	Away		25—Swinton	Home	2-30		
21—Batley	Home	3-0	27—				
25—Salford (Wed.)	Away	7-0	Jan. 1—Belle Vue R.	Home	2-30		
28—St. Helens	Away		8—Leigh	Away			
Sept. 4—Barrow	Away		15—Warrington	Home	2-30		
11—1st Round Lancs. Cup			22—Workington	Away			
14—Liverpool (Tues.)	Home	7-0	29—Rochdale Hornets	Home	3-0		
18—Batley	Away		Feb. 5—Barrow	Home	3-0		
25—Wakefield T.	Home	3-0	12—First Round R.L. Cup				
Oct. 2—Blackpool	Away		19—St. Helens	Home	3-0		
9—Workington	Home	3-0	26—				
16—Rochdale Hornets	Away		Mar. 5—Second Round R.L. Cup				
23—Hull	Home	3-0	12—Belle Vue Rangers	Away			
30—Liverpool S.	Away		19—Widnes	Home	3-0		
Nov. 6—Blackpool	Home	3-0	26—Warrington	Away			
13—Widnes	Away		Apl. 2—Wigan	Home	3-0		
20—Whitehaven	Home	2-30	8—Swinton (Friday)	Away			
27—Wigan	Away		9—Hull	Away			
Dec. 4—Salford	Home	2-30	11—Keighley (Mon.)	Home	3-0		
11—Whitehaven	Away		16—Leigh	Home	3-0		

OLDHAM FOOTBALL CLUB



PROGRAMME...THREEPENCE

... For good food



Shops & Restaurants

You'll do better at a U.C.P. Restaurant
in fact **"A WINNER EVERY TIME"**

19 HIGH STREET, OLDHAM



And many Shops and Restaurants
in Manchester and throughout the North

OFFICIALS

President : W. HOWARD, M.B.E., J.P.

Vice-President : J. COULTHARD, Esq.

Hon. Treasurer : A. CORDWELL, Esq.

Committee :

Messrs. F. W. Ashworth, A. F. Campbell, F. S. Holt, T. Hurtle, F. Knowles,
J. W. Lewthwaite, F. Ridgway, E. Thomas, E. Watkins

Club Doctor : Dr. JOHN OLIVER

Secretary : Mr. H. SUMMERSCALES

Pavilion Telephone No. : MAIn 4865

THIS SPACE TO LET

apply to

THE SECRETARY,

OLDHAM FOOTBALL CLUB,

PAVILION,

WATERSHEDDINGS,

OLDHAM, Lancs.

OLDHAM v. WHITEHAVEN**WATERSHEDDINGS NEWS AND VIEWS**

We are still marching on, and are proud to be League leaders, but in all sincerity, we must admit that in our latest away victory at Widnes we were very lucky indeed to come away with two points. The ground conditions could not be called bad, but the going was on the heavy side, and we were up against a sparkling Widnes side who attempted to play the open game, and it was only by our good cover defence that we kept them from scoring. Ten minutes from time the match appeared to all intents and purposes as if it would end in a draw of four points each, then our opponents appeared to catch our defence on the wrong leg, and they scored a good try, but it was to far out to convert. However, our players had the power of recovery, and above all, the will power to fight to the end. It was a brilliant piece of tactical play by our winger, Cracknell, when he managed to steal a pass that was intended for his opposite number, he outpaced the opposition and scored a good try. This was three minutes from time, and much depended on our full back who aimed good and true, to land a fine, but all important goal. No side was sounded after the kick-out, and all from Oldham were much relieved to hear the final whistle.

OUR VISITORS

To-day, the Whitehaven Club pay their annual visit to Watersheddings, and we extend a welcome to them.

One can visualise the long journeys that the two Cumberland Clubs, Whitehaven and Workington, have to make each time they play in Lancashire or Yorkshire, and we accept both Clubs as worthy outpost members of the Rugby League.

The Whitehaven Club is enjoying a moderate season, but are a team that do play the open type of R. L. football, and to-day we can expect a game that will prove interesting

Our team will not have to take any liberties with the opposition, as they are a full eighty minutes team, and are capable of springing a surprise, so it will be up to our players to be in top form to achieve victory.

PEN PICTURE

William Benrard Ganley, our full back, was born at Leigh, Lancashire, in 1928, and is the only son of the famous W. H. (Bert) Ganley, who was a member of the famous Huddersfield team in the dim distant past.

Bernard commenced his career in Rugby League football at the age of nine, when he played for his school team, St. Joseph's, Leigh, as a centre. On leaving St. Joseph's School to attend Leigh Grammar School, he trans-

Telephone: BLA 6985

H. C. COOKE

(SPORTS) LTD.

LEADING SPORTS OUTFITTERS TO THE R.L.

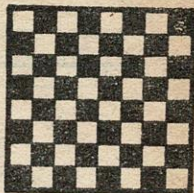
**26 JOHN DALTON ST., &
68 CORPORATION ST., MANCHESTER**

RUGBY JERSEYS at last season's prices from 16/6
STOCKINGS in hooped designs from 4/11 per pair
R. L. PATTERN SHORTS from 11/6 per pair
All sizes of Cotton Oxford and
Elmer Cotton Rugby Boots in stock

COOKE'S of MANCHESTER

Suppliers of the 1952 Finalists' complete Kit

*There's a
Wilson's Ale
to suit
every taste*



**THE SIGN OF
QUALITY**



WILSON'S BREWERY LTD., MANCHESTER, 10

G. Barlow & Sons LIMITED

Saloon Coaches for away matches
Land Cruises and Pleasure Trips
Weddings and Tours arranged
also Complete Funeral Furnishers

PERSONAL ATTENTION TO ALL ORDERS

Telephone: MAIn 4301

**UNION STREET WEST GARAGE,
OLDHAM**

Tom Shaw & Son (Oldham) Ltd.

Luxury Coaches for all occasions
Operators of 'Pleasureways Tours'

151 UNION ST., OLDHAM

Telephone: MAIn 5033/4

You cannot do better than...
book your next Cup Final Party,
Day Outing or Holiday Tour
at...

STANTON'S TRAVEL AGENCY

Official Travel Agents to the Oldham F.C.

112 UNION ST., OLDHAM

ESTABLISHED OVER FIFTY YEARS

Wellington Inn

T. W. HURTLEY (Tommy)

What you want...

Good Company, Wilson's Fine Beers
and Stouts, Sporty Chatter,
Wines and Spirits

Ripponden Road - Oldham

Telephone: MAIn 1939

INSIST ON THE GREEN FINAL

A
L
L
T
H
E
R
E
S
U
L
T
S

OLDHAM

Red and White

1. Ganley, W. B.
2. Cracknell, R.
3. Barrow, R./Mitchell, W. S.
4. Davies, A.—Captain
5. O'Grady, T.
6. Noon, J.
7. Pitchford, F./Stirrup, F.
8. Ogden, H.
9. Keith, J.
10. Jackson, K.
11. Winslade, C.
12. Jarman, A./Watson, J. H.
13. Goldswain, B. V.

WHITEHAVEN

Chocolate and Blue

1. McKeown
2. Jackson
3. Dawson
4. Smith
5. Harrison
6. Garratt
7. Keen
8. McAlone
9. Richardson
10. Graham
11. McCourt
12. Robinson
14. Parr

A
L
L
T
H
E
R
E
S
U
L
T
S

Referee: Mr. R. WELSBY of Warrington

Touch Judges:

Mr. G. Sloan, Maryport (Red)

Mr. J. Grayley, Widnes (Blue)

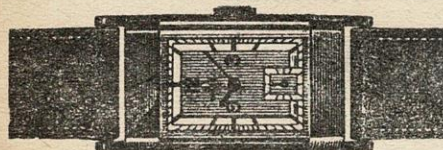
OLDHAM'S OWN SPORTS PAPER

**ANYWHERE
ANYHOW
ANYTIME**



BY LAND, SEA OR AIR.
For your next holiday, day
outing, or journey of any
kind, consult...

STANTON—Travel Agency
112 UNION STREET, OLDHAM



You can depend on a watch
bought at

JOSEPH HOWELL & SONS

THE JEWELLERS DOWN MUMPS

8-10 MUMPS, OLDHAM MAIn 4804

FOOTBALL
MATCHES

PRIVATE PARTIES
specially catered for

SANDY'S TOURIST AGENCY

Proprietor: A. F. Campbell

Official Agents for

AUTY'S - ARROWSMITH'S - BATTY-HOLT
SMITH'S CONTINENTAL & BRITISH
and SHEARING'S TOURS

Agent for all BUTLIN'S HOLIDAY CAMPS

**5 ABBEY HILLS ROAD
OLDHAM**

'Phone: MAIn 6912

ferred his sporting affection to soccer, and in the school team, displaced Harold Hassall, who now plays for Bolton Wanderers. Leaving the Grammar School he joined H.M. Forces to complete his military service. On the completion of his duty in the Services he entered Manchester University where he graduated as a B.A. (Economics). In the intrim he played with Leigh Spinners, a Leigh Junior League team, and played three trials with Leigh F.C. as centre and out-half, but was turned down by the Leigh Club.

He joined our Club in the season 1949-50 and played a full season as an amateur, he joined professionally in the season 1950-51. He has other interests in sport, having played three seasons at cricket for Ashton in the Central Lancashire League. He is a fast right-arm bowler, and as a batsman, is one to be respected. He has had a trial with the Lancashire County and he opened the bowling with Frank Tyson, now in Australia with the M.C.C.

He considers the biggest thrill he has had was when, playing against Halifax at Watersheddings one Easter, he kicked his hundredth goal, forty-five yards out and against the wind. He has played for Lancashire County twice this season and was selected in 1950 but could not play owing to injury.

He is a bachelor—eligible young ladies, please note!— and is in the family business at Leigh, W. H. Ganley & Son, Wholesale Produce Merchants. Height, 5ft. 8½in. and weight, 12st. 7lb., we hope to have the services of our match-winning full-back for several seasons to come. He is feared throughout the game for his goal-kicking potentiality, having kicked 122 goals in season 1953-54, 147 goals in season 1952-53, and up to date in the present season, 76 goals.

BRIEFS

Much concern is felt by the committee at the draining condition of the ground, and steps are being taken for the re-laying of drains and top soil. This can only take place at the end of the season when the big effort will be made in the minimum of time to allow for re-seeding. In the meantime, we are going to proceed with the making of the new training ground adjacent to the Pavilion. Although this will cost the Club a lot of money, the committee are unaminus that this project must proceed so as to give our match area a rest.

HALF-TIME SCORES

The Half-time Scores of the Matches given below will be shown on the Score Board immediately they are received

A ATHLETIC
CREWE A.

B BARROW
WIGAN

C LEEDS
ST. HELENS

D LEIGH
HUDDERSFIELD

E HULL
WARRINGTON

F HALIFAX
HUNSLET

Keep dry with . . .

"STONE-DRI"

(Registered)

WEATHERWEAR

Branches at WAKEFIELD, ROCHDALE,
ASHTON, BRADFORD, LEIGH, Etc.

Direct Raincoat Co.

102, YORKSHIRE ST., OLDHAM

SHOP & OFFICE FITTER — POLISHING

WALTER MILLS

(Proprietor: A. Mills)

Joiner, Cabinet Maker, Etc.

Repairs and Alterations a Speciality

5 GARFITT STREET, OLDHAM
off ROCK STREET

Terms: MONTHLY — Phone: MAIn 3574

R. Boardman & Co.

ALE & STOUT BOTTLERS
Mineral Water Manufacturers

Try our . . .

"SPECIAL" GRAPE FRUIT CRUSH
Obtainable in the Pavilion

ASHTON - U - LYNE

Telephone: ASHton 2310

Brands of Petrol for Sale
NATIONAL BENZOLE, ESSO EXTRA, CLEVECOL
SHELL, DOMINION and POWER

Telephone - MAIn 3404

DIESEL FUEL SUPPLIERS

Oldham Service Station

Proprietors: William Leigh Ltd.

BOTTOM O'TH' MOOR, OLDHAM

Our Motto—"Service to the Public"

ALL GRADES OF OIL &
ACCESSORIES IN STOCK

Hours of Business:
Weekdays: 7-30 a.m. to 9-0 p.m.
Sundays: 8-30 a.m. to 9-0 p.m.