

Telephone : MAIn 2972

Haigh's Marine Stores Limited

Registered Office : 21 CROSS STREET, OLDHAM

IRON AND STEEL MERCHANTS

Bulk Buyers of
MIXED RAGS, SCRAP LEAD, COPPER, BRASS, COPPER WIRE, Etc.

DRAWING ROPES, STRING, HEMP, TWINE,
COTTON, ROLLER CLOTH, CLEARER CLOTH,
PAPER, TYRES, TUBES

All goods collected

Terms : CASH

Distance no object

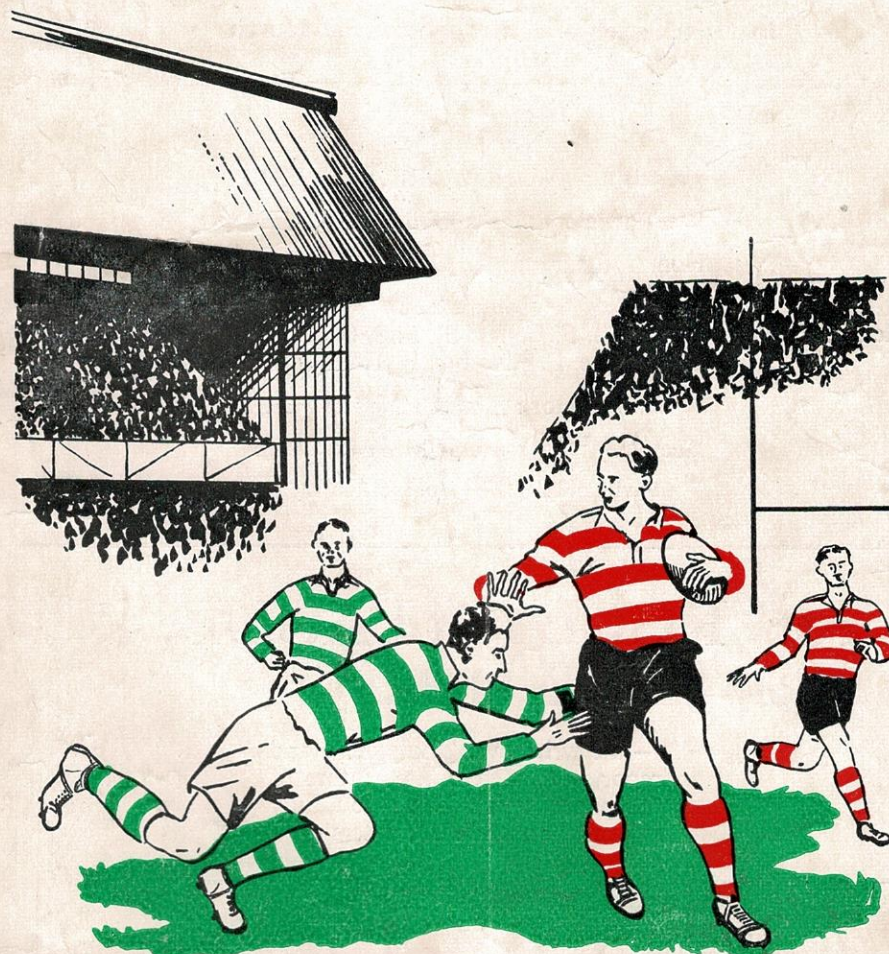
CROFTBANK MILL OLDHAM

Fixtures for the Season

1954-55	Opponents	Venue	K.O.	1954-55	Opponents	Venue	K.O.
17.17	Aug. 7—Rochdale (Charity)	Home	3-0	D	Dec. 18—Keighley	Away	W
	14—Wakefield T.	Away		W	25—Swinton	Home	2-30 W
	21—Batley	Home	3-0	W	27—		
11.2	25—Salford (Wed.)	Away	7-0	L	Jan. 1—Belle Vue R.	Home	2-30 W
	28—St. Helens	Away		W	8—Leigh	Away	W
18.12	Sept. 4—Barrow	Away		W	15—Warrington	Home	2-30 L
	11—1st Round Lanes. Cup				22—Workington	Away	13-5 L
	14—Liverpool (Tues.)	Home	7-0	W	29—Rochdale Hornets	Home	3-0 W
	18—Batley	Away		W	Feb. 5—Barrow	Home	3-0
8.7	25—Wakefield T.	Home	3-0	W	12—First Round R.L. Cup		
	Oct. 2—Blackpool	Away		W	19—St. Helens	Home	3-0
	9—Workington	Home	3-0	W	26—		
18.4	16—Rochdale Hornets	Away		W	Mar. 5—Second Round R.L. Cup		
	23—Hull	Home	3-0		12—Belle Vue Rangers	Away	
	30—Liverpool S.	Away		W	19—Widnes	Home	3-0
	Nov. 6—Blackpool	Home	3-0	W	26—Warrington	Away	
	13—Widnes	Away		W	Apl. 2—Wigan	Home	3-0
	20—Whitehaven	Home	2-30	W	8—Swinton (Friday)	Away	
9.5	27—Wigan	Away		W	9—Hull	Away	
	Dec. 4—Salford	Home	2-30	W	11—Keighley (Mon.)	Home	3-0
7.7	11—Whitehaven	Away		D	16—Leigh	Home	3-0

Designed and Printed by T. Crabtree, Neild Street, Oldham

OLDHAM FOOTBALL CLUB



PROGRAMME · · · THREEPENCE

... For good food

U.C.P.

Shops & Restaurants

You'll do better at a U.C.P. Restaurant
in fact **"A WINNER EVERY TIME"**

19 HIGH STREET, OLDHAM

And many Shops and Restaurants
in Manchester and throughout the North

**OFFICIALS**

President : W. HOWARD, M.B.E., J.P.

Vice-President : J. COULTHARD, Esq.

Hon. Treasurer : A. CORDWELL, Esq.

Committee :

Messrs. F. W. Ashworth, A. F. Campbell, F. S. Holt, T. Hurtley, F. Knowles,
J. W. Lewthwaite, F. Ridgway, E. Thomas, E. Watkins

Club Doctor : Dr. JOHN OLIVER

Secretary : Mr. H. SUMMERSCALES

Pavilion Telephone No. : MAIn 4865

For RUGBY LEAGUE follow JIMMY BREEN

— the writer who's comments and
reports are a favourite feature of
the paper which keeps you fully
informed on all R.L. matters —

The Manchester

Evening Chronicle

Football Final

OLDHAM v. ROCHDALE HORNETS**WATERSHEDDINGS NEWS AND VIEWS**

Something new and unusual has happened to our first team in losing two matches in succession. We knew that we had to submit to defeat some day, but we did not expect to retire beaten on our own ground in the match against Warrington on January 15th. This was a match of missed chances by our players, and no doubt our Warrington friends will admit that they were somewhat lucky in going away with two points. They took advantage of what came their way. The conditions of the day and ground did not lend themselves to the best traditions of the game, but the players of both sides gave an exhibition of Rugby League which was a credit to all, and we saw nothing of the supposed evils and drawbacks to our game. Our game and rules are good, but the interpretation of same does not sink in with some players. It is the players that are in it that sometimes makes the game uninteresting and boring. Played according to the book, it is the finest game in the world. Watch a team of schoolboys playing Rugby League and you are sure to enjoy every minute. One must confess that they do not play as fast as the seniors, but you will see very few hold-ups by infringement of the rules. To referee in a schoolboy game must be a pleasure. The referee in a senior or professional game works very hard and is often called "the villain of the piece."

Our second successive defeat occurred at Workington on Saturday last—our third in League Football this season—and we must admit that our team did not sparkle, things did not seem to go according to plan and we were somewhat off colour. We were unfortunate to lose the services of Bryn Goldswain for the whole of the second half which made our attempts more difficult in our efforts to overcome our doughty and keen opponents. Although beaten by thirteen points to five, we had our opportunities in the second half—even with a man short—to pull the game out of the fire, but the chances were wasted and we retired a fighting force with due honours to the victors.

OUR VISITORS

Welcome to the Hornets from Rochdale—there is always a welcome at Watersheddings for our old friends and dour opponents.

Many have been the thrilling games between the two clubs in the past, and when a full-house was the order of the day, the meeting of the two clubs was something to look forward to. We trust that to-day will be no exception, and hope we will have a game to remember and something to talk about in the future.

It will be hard going for both sides as they are capable of showing how the game should be played. Our team will have to be in first-rate form, and they must forget the recent defeats in succession, then we shall have regained our confidence and the will and ability to win, but I suppose our visitors will have a say in this. However at the end of the game let us all say we have had a good match to watch and we hope the satisfaction of a home win.

TWO DIVISIONS

An Extraordinary General Meeting of the Northern Rugby Football League will be held on Wednesday, 16th February, 1955, to decide by a two-thirds majority the adoption of two divisions of the Northern Rugby Football League. This must be a very eventful day in the history of our code. We are definitely in favour of two divisions. If the scheme is carried it is proposed to commence in season 1955-56 and

Telephone: BLA 6985

H. C. COOKE

(SPORTS) LTD.

LEADING SPORTS OUTFITTERS TO THE R.L.

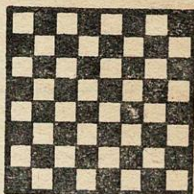
26 JOHN DALTON ST., &
68 CORPORATION ST., MANCHESTER

RUGBY JERSEYS at last season's prices from 16/6
STOCKINGS in hooped designs from 4/11 per pair
R. L. PATTERN SHORTS from 11/6 per pair
All sizes of Cotton Oxford and
Elmer Cotton Rugby Boots in stock

COOKE'S of MANCHESTER

Suppliers of the 1952 Finalists' complete Kit

There's a
Wilson's Ale
to suit
every taste



THE SIGN OF
QUALITY



WILSON'S BREWERY LTD., MANCHESTER, 10

G. Barlow & Sons LIMITED

Saloon Coaches for away matches
Land Cruises and Pleasure Trips
Weddings and Tours arranged
also Complete Funeral Furnishers

PERSONAL ATTENTION TO ALL ORDERS

Telephone: MAIn 4301

UNION STREET WEST GARAGE,
OLDHAM

Tom Shaw & Son (Oldham) Ltd.

Luxury Coaches for all occasions
Operators of 'Pleasureways Tours'

151 UNION ST., OLDHAM

Telephone: MAIn 5033/4

You cannot do better than...
book your next Cup Final Party,
Day Outing or Holiday Tour
at...

STANTON'S

TRAVEL AGENCY

Official Travel Agents to the Oldham F.C.

112 UNION ST., OLDHAM

ESTABLISHED OVER FIFTY YEARS

Wellington Inn

T. W. HURTLEY (Tommy)

What you want...

Good Company, Wilson's Fine Beers
and Stouts, Sporty Chatter,
Wines and Spirits

Ripponden Road - Oldham

Telephone: MAIn 1939

INSIST ON THE GREEN FINAL

ALL
THE
RESULTS

OLDHAM

Red and White

1. Stirrup, F. *11pts* *1 Try*
2. O'Grady, T. *1 Try*
3. Davies, A. (Captain)
4. Etty, J. W.
5. Barrow, R.
6. Daley, F.
7. Pitchford, F. *1 Goal*
8. Ogden, H.
9. Keith, J. *1 Try*
10. Jackson, K.
11. Winslade, C.
12. Little, S. *Tomlinson, A.*
13. Watson, J. H.

ROCHDALE H.

Red, White and Blue

1. Cahill, E.
2. ~~Lord, W.~~ *Bradley*
3. Short, N.
4. Jones, L. *3 Goals*
5. Roach, W.
6. Taylor, A.
7. Evans, R.
8. Dooney, J.
9. Ellean, W.
10. Appleton, W.
11. Scholes, A.
12. Gallagher, M.
13. Kelly, G. *1 Try*

ALL
THE
RESULTS

Referee: Mr. C. F. APPLETON of Warrington

Touch Judges:

Mr. P. Armstrong, Egremont (Red) Mr. E. Bleasdale, Warrington (Blue)

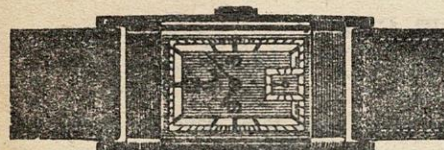
OLDHAM'S OWN SPORTS PAPER

ANYWHERE
ANYHOW
ANYTIME



BY LAND, SEA OR AIR.
For your next holiday, day
outing, or journey of any
kind, consult...

STANTON—Travel Agency
112 UNION STREET, OLDHAM



You can depend on a watch
bought at

JOSEPH HOWELL & SONS

THE JEWELLERS DOWN MUMPS

8-10 MUMPS, OLDHAM MAIn 4804

FOOTBALL
MATCHES

PRIVATE PARTIES
specially catered for

SANDY'S TOURIST AGENCY

Proprietor: A. F. Campbell

Official Agents for
AUTY'S - ARROWSMITH'S - BATTY-HOLT
SMITH'S CONTINENTAL & BRITISH
and SHEARING'S TOURS

Agent for all BUTLIN'S HOLIDAY CAMPS

5 ABBEY HILLS ROAD
OLDHAM

'Phone: MAIn 6912

another item is that an increased levy of 15 per cent. against the present 10 per cent. comes into operation on all League and County League matches. Statistics prove that our game is not attracting the public as in the past and we consider that two divisions may be an answer to this, in fact we can try it for a period. To remain static as at present will prove that matters will go worse and the plight of several clubs from a financial outlook will also go worse. Let the big clubs—as well as the weak ones—fight for their places, there will always be one club at the top and one at the bottom, and evenly spread competition will be healthy and good for the game.

PEN PICTURE—JOHN WILLIAM ETTY

One of the latest additions to our playing strength is John William Etty, who is a native of Batley, and signed for the local club at the age of 17 years and has given 10 years' service. Has played eight times for Yorkshire County and has been the mainstay of the Batley Club for a considerable period. Captain of the Club his departure from Batley is a big shock for the Yorkshire supporters, but force of circumstances from a financial point made it possible for us to sign this big centre or wing. A married man with two children he will continue to reside in Batley. A teetotaler and non-smoker he is employed in Wakefield in the Civil Service. Age 27 years, height 6 feet and weight 13 stone, we hope his career with us will be one of success and happiness.

BRIEFS

Two collections made for the Lawrence Platt Testimonial Fund amounted to £35 and £20, this is a good send-off and we must thank all who made a contribution.

Tough luck on our loose forward, Bryn Goldswain, in the painful injury he received whilst playing against Workington. Some opponents elbow caught Bryn on the throat early in the first half, but Bryn carried on until forced to retire from the field, gasping for breath and internal bleeding from the mouth. X-rayed and examined at Workington Infirmary he was certified as fit to travel the long journey to Oldham. We are sure that Bryn will never forget that journey being a very sick man and suffering intense pain. However we are pleased to report good progress and hope soon to have the service of this great player.

Midnight on Tuesday next, 1st February is the latest time for the registering of any new players for the Challenge Cup Competition, and we can see a busy week-end for many clubs in their efforts to strengthen sides to make a show in the competition.

Will all members and supporters please note that the times of kick-off for all matches from now until the end of the season is 3 p.m.

MILESTONES IN OUR GAME

- 1895—Northern Rugby Football Union founded.
- 1897—Challenge Cup Competition started.
- 1898—Unrestricted professionalism introduced, players to work three days per week.
- 1902—Punt from touch altered to 10 yards scrum. Direct kicking into touch banned.
- 1906—Thirteen players instead of fifteen aside introduced.
- 1907—First New Zealand team visited Britain.
- 1922—Title changed to The Rugby Football League.
- 1922—Kicking goal from mark abolished.
- 1929—First Challenge Cup Final at Wembley.
- 1954—Record attendance (102,575) for any Rugby match, Warrington v. Halifax, Challenge Cup replay, at Odsal Stadium, Bradford.

Keep dry with . . .

"STONE-DRI" (Registered) WEATHERWEAR

Branches at WAKEFIELD, ROCHDALE,
ASHTON, BRADFORD, LEIGH, Etc.

Direct Raincoat Co.
102, YORKSHIRE ST., OLDHAM

SHOP & OFFICE FITTER — POLISHING

WALTER MILLS

(Proprietor: A. Mills)

Joiner, Cabinet Maker, Etc.

Repairs and Alterations a Speciality

5 GARFITT STREET, OLDHAM
off ROCK STREET

Terms: MONTHLY — Phone: MAIn 3574

R. Boardman & Co.

ALE & STOUT BOTTLERS
Mineral Water Manufacturers

Try our . . .
"SPECIAL" GRAPE FRUIT CRUSH
Obtainable in the Pavilion

ASHTON - U - LYNE
Telephone: ASHton 2310

Brands of Petrol for Sale
NATIONAL BENZOLE, ESSO EXTRA, CLEVECOL
SHELL, DOMINION and POWER

Telephone — MAIn 3404

DIESEL FUEL SUPPLIERS

Oldham Service Station

Proprietors: William Leigh Ltd.

BOTTOM O'TH' MOOR, OLDHAM

Our Motto—"Service to the Public"

ALL GRADES OF OIL &
ACCESSORIES IN STOCK

Hours of Business:
Weekdays: 7-30 a.m. to 9-0 p.m.
Sundays: 8-30 a.m. to 9-0 p.m.