

Telephone : MAIn 2972

# Haigh's Marine Stores Limited

Registered Office : 21 CROSS STREET, OLDHAM

**IRON AND STEEL MERCHANTS**

Bulk Buyers of

MIXED RAGS, SCRAP LEAD, COPPER, BRASS, COPPER WIRE, Etc.

**DRAWING ROPES, STRING, HEMP, TWINE,  
COTTON, ROLLER CLOTH, CLEARER CLOTH,  
PAPER, TYRES, TUBES**

All goods collected

**Terms : CASH**

Distance no object

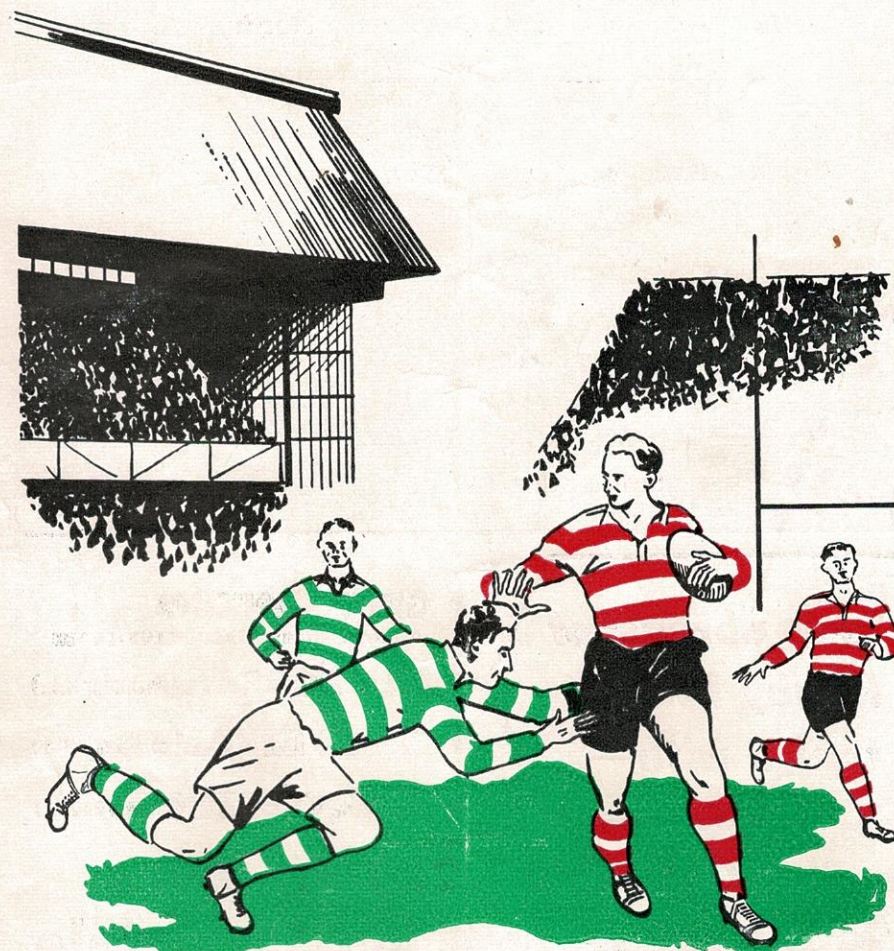
**CROFTBANK MILL . . . OLDHAM**

## Fixtures for the Season

1954-55	Opponents	Venue	K.O.	1954-55	Opponents	Venue	K.O.
Aug. 7—Rochdale (Charity) .....	Home	3-0	Dec. 18—Keighley .....	Away			
14—Wakefield T. ....	Away		25—Swinton .....	Home	2-30		
21—Batley .....	Home	3-0	27—				
25—Salford (Wed.) .....	Away	7-0	Jan. 1—Belle Vue R. ....	Home	2-30		
28—St. Helens .....	Away		8—Leigh .....	Away			
Sept. 4—Barrow .....	Away		15—Warrington .....	Home	2-30		
11—1st Round Lincs. Cup			22—Workington .....	Away			
14—Liverpool (Tues.) .....	Home	7-0	29—Rochdale Hornets .....	Home	3-0		
18—Batley .....	Away		Feb. 5—Barrow .....	Home	3-0		
25—Wakefield T. ....	Home	3-0	12—First Round R.L. Cup				
Oct. 2—Blackpool .....	Away		19—St. Helens .....	Home	3-0		
9—Workington .....	Home	3-0	26—				
16—Rochdale Hornets .....	Away		Mar. 5—Second Round R.L. Cup				
23—Hull .....	Home	3-0	12—Belle Vue Rangers .....	Away			
30—Liverpool S. ....	Away		19—Widnes .....	Home	3-0		
Nov. 6—Blackpool .....	Home	3-0	26—Warrington .....	Away			
13—Widnes .....	Away		Apl. 2—Wigan .....	Home	3-0		
20—Whitehaven .....	Home	2-30	8—Swinton (Friday) .....	Away			
27—Wigan .....	Away		9—Hull .....	Away			
Dec. 4—Salford .....	Home	2-30	11—Keighley (Mon.) .....	Home	3-0		
11—Whitehaven .....	Away		16—Leigh .....	Home	3-0		

Designed and Printed by T. Crabtree, Neild Street, Oldham

# OLDHAM FOOTBALL CLUB



**PROGRAMME...THREEPENCE**



... For good food

**U.C.P.**

Shops &amp; Restaurants

You'll do better at a U.C.P. Restaurant  
in fact **"A WINNER EVERY TIME"**

**19 HIGH STREET, OLDHAM**

And many Shops and Restaurants  
in Manchester and throughout the North

**OFFICIALS**

President : W. HOWARD, M.B.E., J.P.

Vice-President : J. COULTHARD, Esq.

Hon. Treasurer : A. CORDWELL, Esq.

## Committee :

Messrs. F. W. Ashworth, A. F. Campbell, F. S. Holt, T. Hurtley, F. Knowles,  
J. W. Lewthwaite, F. Ridgway, E. Thomas, E. Watkins

Club Doctor : Dr. JOHN OLIVER

Secretary : Mr. H. SUMMERSCALES

Pavilion Telephone No. : MAIn 4865

**keep abreast of  
Rugby League  
topics with—**

- ◆ **GRIFF JENKINS**  
OLDHAM RUGBY LEAGUE CLUB COACH
- ◆ **BILL DORRAN** (on Junior R.L.)
- ◆ **BRIAN BEVAN** of Warrington
- ◆ **JIMMY BREEN** Ace reporter

**in the OLDHAM EDITION of the  
Manchester Evening Chronicle**

**OLDHAM v. KEIGHLEY****WATERSHEDDINGS NEWS AND VIEWS**

A glorious victory was recorded against our visitors from Wigan on Saturday, April 2nd, and it was one of our best wins of the season in scoring a victory by twenty-six points to nil against worthy opponents. It is many years since a Wigan team failed to score at Watersheddings, and it is a problem of football form to solve, when one realises that this same Wigan team beat Warrington, at Warrington, on Saturday, March 19th, and we were humiliated at Warrington the following Saturday, such is football form.

We were very pleased to see Dennis Ayres in such good form and in excellent condition upon his leave from H.M. Forces in Germany. He had a good debut, and it augurs well for the future. Unfortunately this promising young player does not come out of the forces until February, 1956, but there is a possibility of his services being secured by this club if required in the interim. Dennis returned to his unit yesterday.

Alan Kellett, our other promising out-half joins H.M. Forces in September next.

**R.L. CHAMPIONSHIP**

Unless the unforeseen happens it appears that we shall finish in the first four of the Northern Rugby Football League, and it is imperative that we should finish first or second in the League in order to have the ground advantage when playing at home in the play-offs. The first plays the fourth at home and the second plays the third at home.

The gates of the semi-final are divided equally between the clubs taking part in each match. The proceeds of the final, after expenses and a percentage for the use of the ground have been deducted, are divided into three equal parts—one third to each of the competing clubs and one third to the League.

**OUR VISITORS**

To-day we have infrequent visitors from Keighley and we give them a welcome to Watersheddings.

Our visit to Keighley on December 18th last resulted in a victory for us of fifteen points to eleven points, so we have great hopes of achieving a double at the expense of our visitors. We must not underate the Keighley team—they are one of the teams that rise to the occasion at times, as was shown by their great win at Wakefield three weeks ago. We can, however, expect a good open game of football, although our team will be playing their third game in four days, having played both Swinton and Hull away. It is a hard task for any team to take on, but we hope to finish in a happy position at the conclusion of our holiday fixtures.

The match to-day is labelled a holiday fixture, but several of our members and supporters are at work, this is unavoidable on our part, but what they lose by to-day's match, we hope they will gain by the glorious wind-up of the season next week-end, when we have attractive visitors at Watersheddings in Leigh on Saturday, kick-off 3 p.m., and on Monday in Hull, kick-off 6-30 p.m.



Telephone: BLA 6985

## H. C. COOKE

(SPORTS) LTD.

LEADING SPORTS OUTFITTERS TO THE R.L.

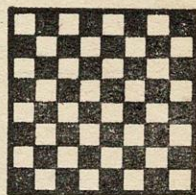
**26 JOHN DALTON ST., &  
68 CORPORATION ST., MANCHESTER**

RUGBY JERSEYS at last season's prices from 16/6  
STOCKINGS in hooped designs from 4/11 per pair  
R. L. PATTERN SHORTS from 11/6 per pair  
All sizes of Cotton Oxford and  
Elmer Cotton Rugby Boots in stock

**COOKE'S of MANCHESTER**

Suppliers of the 1952 Finalists' complete Kit

*There's a  
Wilson's Ale  
to suit  
every taste*



**THE SIGN OF  
QUALITY**



WILSON'S BREWERY LTD., MANCHESTER, 10

## G. Barlow & Sons LIMITED

Saloon Coaches for away matches  
Land Cruises and Pleasure Trips  
Weddings and Tours arranged  
also Complete Funeral Furnishers

**PERSONAL ATTENTION TO ALL ORDERS**

Telephone: MAIn 4301

**UNION STREET WEST GARAGE,  
OLDHAM**

## Tom Shaw & Son (Oldham) Ltd.

Luxury Coaches for all occasions  
Operators of 'Pleasureways Tours'

**151 UNION ST., OLDHAM**

Telephone: MAIn 5033/4

You cannot do better than...  
book your next Cup Final Party,  
Day Outing or Holiday Tour  
at...

## STANTON'S TRAVEL AGENCY

Official Travel Agents to the Oldham F.C.

**112 UNION ST., OLDHAM**

ESTABLISHED OVER FIFTY YEARS

## Wellington Inn

T. W. HURTLEY (Tommy)

What you want...

Good Company, Wilson's Fine Beers  
and Stouts, Sporty Chatter,  
Wines and Spirits

**Ripponden Road - Oldham**

Telephone: MAIn 1939

## INSIST ON THE GREEN FINAL

ALL  
THE  
RESULTS

### OLDHAM

(Red and White)

1. Stirrup, F./Ganley, W. B.
2. O'Grady, T.
3. Davies, A. (Capt.)
4. Barrow, R./Etty, J.
5. Cracknell, R.
6. Kellet, A./Daley, F.
7. Pitchford, F.
8. Ogden, H.
9. Keith, J.
10. Jackson, K.
11. Winslade, C.
12. Little, S./Tomlinson, A.
13. Goldswain, B. V.

### KEIGHLEY

(Green and Scarlet)

1. Black, N. W.
2. Ward, L.
3. A. N. Other
4. Redman, E.
5. Bleasby, R.
6. Verrankamp, E.
7. Brown, G.
8. Woosey, G.
9. Traill, A.
10. Bardgett, J.
11. Murphy, H.
12. Hopkin, J.
14. Bell, M.

ALL  
THE  
R.L.  
NEWS

Referee: Mr. J. P. Hebblethwaite, York

Touch Judges:

Mr. S. J. Heesom, Warrington (Red)

Mr. H. Holland, St. Helens (Blue)

**OLDHAM'S OWN SPORTS PAPER**

## F. Knowles & Co. Ltd.

TEXTILE MACHINISTS

Dealers in all classes of Opening, Card  
Room, Spinning, Winding & Doubling  
Machinery

Textile Machinery Bought and Sold  
on Commission

**GLODWICK ROAD, OLDHAM  
COMMERCIAL WORKS.**

Telephone: MAIn 3797

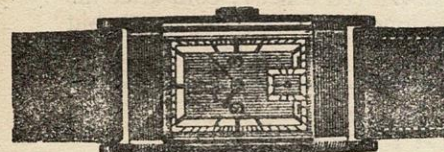
Royal Exchange Tuesday and Friday, Pillar J2

**ANYWHERE  
ANYHOW  
ANYTIME**



BY LAND, SEA OR AIR.  
For your next holiday, day  
outing, or journey of any  
kind, consult...

**STANTON—Travel Agency  
112 UNION STREET, OLDHAM**



You can depend on a watch  
bought at

**JOSEPH HOWELL & SONS**

THE JEWELLERS DOWN MUMPS

8-10 MUMPS, OLDHAM MAIn 4804

FOOTBALL  
MATCHES

PRIVATE PARTIES  
specially catered for

## SANDY'S TOURIST AGENCY

Proprietor: A. F. Campbell

Official Agents for  
AUTY'S - ARROWSMITH'S - BATTY-HOLT  
SMITH'S CONTINENTAL & BRITISH  
and SHEARING'S TOURS

Agent for all BUTLIN'S HOLIDAY CAMPS

**5 ABBEY HILLS ROAD  
OLDHAM**

'Phone: MAIn 6912



### RUGBY LEAGUE STAFF APPOINTMENT

The strength of any game is judged by the number of people playing it, and not by the number of people who watch the major games. The further development of the Rugby League Football depends on the strength of the Schools and Junior Leagues. The Council of the Rugby Football League, with this in mind, have agreed to the appointment of an Organiser who can devote his time to the development of the Amateur game, particularly in Boy's Clubs.

Applications for the position are invited, and should be sent to the Secretary, The Rugby Football League, 180 Chapeltown Road, Leeds 7. The salary has not yet been determined, but applicants can, if they wish, state the salary required.

A considerable amount of travelling will have to be done by the Organiser in carrying out his duties, and the hours of work will not be regular office hours. Applicants should state if they own their own cars.

This is an opportunity for some budding Rugby League enthusiast with organising ability.

### THE LATE JOHN FEATHER

The Committee have opened a memorial fund in order to provide financial assistance to the dependants of the late John Feather. The Oldham Football Club have headed the donation fund by contributing £100, and we shall be grateful for any financial help that you may be able to give in this matter.

Donations should be forwarded to the Secretary, Oldham Football Club, Watersheddings, Oldham. All donations will be acknowledged.

The Leigh Club have expressed their willingness to play a Testimonial match at Watersheddings for the dependants, but our commitments up to possibly May 14th, make a match impossible. Consideration will be given to the suggestion at a later date.

### BRIEFS

We are hoping to play a Testimonial match for Lawrence Platt at Watersheddings, possibly on Saturday, May 28th, when either Huddersfield or Halifax will provide the opposition. Further details will be announced in the local press from time to time.

It is not often that we give players ages, but Terry O'Grady has just celebrated his 21st anniversary, and next on the list will be Frank Pitchford who will be 21 years of age on May 10th.

Alan Jones, one of our up and coming players has been successfully operated upon for a damaged shoulder, and we hope that the operation will not have been in vain. Unfortunately Alan developed a heavy cold after the operation which kept him in hospital a little longer than was expected, but he has now returned home.

### NEXT HOME MATCHES

Saturday, April 16th. Kick-off 3-0 p.m.

**OLDHAM v. LEIGH**

Monday, April 18th. Kick-off 6-30 p.m.

**OLDHAM v. HULL**

Keep dry with . . .

## "STONE-DRI" (Registered) WEATHERWEAR

Branches at WAKEFIELD, ROCHDALE,  
ASHTON, BRADFORD, LEIGH, Etc.

**Direct Raincoat Co.**  
102, YORKSHIRE ST., OLDHAM

SHOP & OFFICE FITTER — POLISHING

## WALTER MILLS

(Proprietor: A. Mills)

Joiner, Cabinet Maker, Etc.

Repairs and Alterations a Speciality

5 GARFITT STREET, OLDHAM  
off ROCK STREET

Terms: MONTHLY — Phone: MAIn 3574

## R. Boardman & Co.

ALE & STOUT BOTTLERS  
Mineral Water Manufacturers

Try our . . .  
"SPECIAL" GRAPE FRUIT CRUSH  
Obtainable in the Pavilion

ASHTON - U - LYNE

Telephone: ASHton 2310

Brands of Petrol for Sale  
NATIONAL BENZOLE, ESSO EXTRA, CLEVECOL  
SHELL, DOMINION and POWER

Telephone - MAIn 3404

DIESEL FUEL SUPPLIERS

## Oldham Service Station

Proprietors: William Leigh Ltd.

BOTTOM O'TH' MOOR, OLDHAM

Our Motto—"Service to the Public"

ALL GRADES OF OIL &  
ACCESSORIES IN STOCK

Hours of Business:  
Weekdays: 7-30 a.m. to 9-0 p.m.  
Sundays: 8-30 a.m. to 9-0 p.m.