

Telephone : MAIn 2972

Haigh's Marine Stores Limited

Registered Office : 21 CROSS STREET, OLDHAM

IRON AND STEEL MERCHANTS

Bulk Buyers of

MIXED RAGS, SCRAP LEAD, COPPER, BRASS, COPPER WIRE, Etc.

DRAWING ROPES, STRING, HEMP, TWINE,
COTTON, ROLLER CLOTH, CLEARER CLOTH,
PAPER, TYRES, TUBES

All goods collected

Distance no object

Terms : CASH

CROFTBANK MILL OLDHAM

Fixtures for the Season

1954-55	Opponents	Venue	K.O.	1954-55	Opponents	Venue	K.O.
Aug. 7	Rochdale (Charity)	Home	3-0	Dec. 18	Keighley	Away	
14	Wakefield T.	Away		25	Swinton	Home	2-30
21	Batley	Home	3-0	27			
25	Salford (Wed.)	Away	7-0	Jan. 1	Belle Vue R.	Home	2-30
28	St. Helens	Away		8	Leigh	Away	
Sept. 4	Barrow	Away		15	Warrington	Home	2-30
11	1st Round Lancs. Cup			22	Workington	Away	
14	Liverpool (Tues.)	Home	7-0	29	Rochdale Hornets	Home	3-0
18	Batley	Away		Feb. 5	Barrow	Home	3-0
25	Wakefield T.	Home	3-0	12	First Round R.L. Cup		
Oct. 2	Blackpool	Away		19	St. Helens	Home	3-0
9	Workington	Home	3-0	26			
16	Rochdale Hornets	Away		Mar. 5	Second Round R.L. Cup		
23	Hull	Home	3-0	12	Belle Vue Rangers	Away	
30	Liverpool S.	Away		19	Widnes	Home	3-0
Nov. 6	Blackpool	Home	3-0	26	Warrington	Away	
13	Widnes	Away		Apr. 2	Wigan	Home	3-0
20	Whitehaven	Home	2-30	8	Swinton (Friday)	Away	
27	Wigan	Away		9	Hull	Away	
Dec. 4	Salford	Home	2-30	11	Keighley (Mon.)	Home	3-0
11	Whitehaven	Away		16	Leigh	Home	3-0

OLDHAM FOOTBALL CLUB



PROGRAMME . . . THREEPENCE

... For good food

U.C.P.

Shops & Restaurants

You'll do better at a U.C.P. Restaurant
in fact "A WINNER EVERY TIME"

19 HIGH STREET, OLDHAM

And many Shops and Restaurants
in Manchester and throughout the North



OFFICIALS

President : W. HOWARD, M.B.E., J.P.

Vice-President : J. COULTHARD, Esq.

Hon. Treasurer : A. CORDWELL, Esq.

Committee :

Messrs. F. W. Ashworth, A. F. Campbell, F. S. Holt, T. Hurtley, F. Knowles,
J. W. Lewthwaite, F. Ridgway, E. Thomas, E. Watkins

Club Doctor : Dr. JOHN OLIVER

Secretary : Mr. H. SUMMERSCALES

Pavilion Telephone No. : MAIn 4865

**keep abreast of
Rugby League
topics with—**

- ◆ **GRIFF JENKINS**
OLDHAM RUGBY LEAGUE CLUB COACH
- ◆ **BILL DORRAN** (on Junior R.L.)
- ◆ **BRIAN BEVAN** of Warrington
- ◆ **JIMMY BREEN** Ace reporter

**in the OLDHAM EDITION of the
Manchester Evening Chronicle**

OLDHAM v. LEIGH

WATERSHEDDINGS NEWS AND VIEWS

A fine Easter holiday and a fine time by our team in completing the hat trick—two away wins and one home win.

To record two wins on opponents ground—Swinton and Hull—on successive days is a fine achievement, and the players must be congratulated upon the form they showed in these matches. Although we appeared to be slow starters in the games and took some time to settle down, our opponents knew what they were up against once we got into our stride.

The one unfortunate aspect of the holiday matches was the injury sustained by our Captain, Alan Davies. This happened at Hull and was quite an accident. Davies was in a tackle when an opponent fell on his ankle and tore the ligaments. However, our Captain is having rest and treatment and we hope that he will soon be fit again to take his place as our captain in the League Championship Semi-final at Watersheddings next Saturday.

LEAGUE PLAY-OFF

Although we are certain to have a home match for the Championship Semi-final our opponents are still unknown and will remain so until Wigan complete their League programme at Rochdale on Monday evening.

Warrington have now completed their programme and have 60 points, we have two matches to play at home and have 59 points at present, Leeds have 52 points with one match to play at home against Wakfield Trinity, and Wigan with two matches to be played away—Blackpool and Rochdale—have 51 points. If the three clubs mentioned win their remaining matches the League position should be—Oldham, Warrington, Wigan, Leeds. Other Clubs with an outside chance are St. Helens, Leigh and Halifax, but they must win all their remaining matches to come into the final positions.

To-day's match for our Club has, if we win, a double achievement—we go to the top of the League and become the Lancashire League Champions. The Lancashire Championship Cup is a beautiful trophy and with it go 13 gold medals.

BRIEFS

Much activity will take place at Watersheddings during the close season by way of ground improvements. Our playing area is to receive "a beauty lift" by being raised in the by about nine inches and re-drained. This is a necessity, as the playing area has become a difficult piece of turf in wet weather and is a detriment to our players with their open style of play. It must be admitted that our team do give their best displays on a dry ground, so the money to be spent on the renovation will be a definite asset.

Telephone: BLA 6985

H. C. COOKE

(SPORTS) LTD.

LEADING SPORTS OUTFITTERS TO THE R.L.

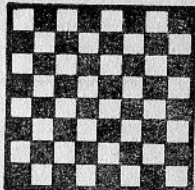
26 JOHN DALTON ST., &
68 CORPORATION ST., MANCHESTER

RUGBY JERSEYS at last season's prices from 16/6
STOCKINGS in hooped designs from 4/11 per pair
R. L. PATTERN SHORTS from 11/6 per pair
All sizes of Cotton Oxford and
Elmer Cotton Rugby Boots in stock

COOKE'S of MANCHESTER

Suppliers of the 1952 Finalists' complete Kit

There's a
Wilson's Ale
to suit
every taste



★
THE SIGN OF
QUALITY

WILSON'S BREWERY LTD., MANCHESTER, 10

G. Barlow & Sons LIMITED

Saloon Coaches for away matches
Land Cruises and Pleasure Trips
Weddings and Tours arranged
also Complete Funeral Furnishers

PERSONAL ATTENTION TO ALL ORDERS

Telephone: MAIn 4301

UNION STREET WEST GARAGE,
OLDHAM

Tom Shaw & Son (Oldham) Ltd.

Luxury Coaches for all occasions
Operators of 'Pleasureways Tours'

151 UNION ST., OLDHAM

Telephone: MAIn 5033/4

You cannot do better than...
book your next Cup Final Party,
Day Outing or Holiday Tour
at...

STANTON'S TRAVEL AGENCY

Official Travel Agents to the Oldham F.C.

112 UNION ST., OLDHAM

ESTABLISHED OVER FIFTY YEARS

Wellington Inn

T. W. HURTLEY (Tommy)

What you want...

Good Company, Wilson's Fine Beers
and Stouts, Sporty Chatter,
Wines and Spirits

Ripponden Road - Oldham

Telephone: MAIn 1939

INSIST ON THE GREEN FINAL

A
L
L
T
H
E
R
E
S
U
L
T
S

OLDHAM (Blue and White)

- 1—STIRRUP, F.
- 2—CRACKNELL, R. (Capt.)
- 3—BARROW, R.
- 4—ETTY, J.
- 5.—O'GRADY, T.
- 6—DALEY, F./KELLETT, A. B.
- 7.—PITCHFORD, F.
- 8—OGDEN, H.
- 9—KEITH, J.
- 10—JACKSON, K.
- 11—WINSLADE, C.
- 12—TOMLINSON, A./LITTLE, S.
- 13—GOLDSWAIN, B. V.

LEIGH (Red and White)

- 1—LEDGARD
- 2—KITCHEN
- 3—McFARLANE
- 4—GIBSON
- 5—DAVIES
- 6—BAXTER
- 7—CHADWICK
- 8—BARTON
- 9—TABERN
- 10—OWEN
- 11—HURT
- 12—CROOK
- 13—FOSTER

A
L
L
T
H
E
R
E
S
U
L
T
S

Referee: Mr. R. Gelder, Wakefield

Touch Judges:

Mr. P. Armstrong, Egremont (Red).

Mr. S. Inman (Blue)

OLDHAM'S OWN SPORTS PAPER

F. Knowles & Co. Ltd.

TEXTILE MACHINISTS

Dealers in all classes of Opening, Card
Room, Spinning, Winding & Doubling
Machinery

Textile Machinery Bought and Sold
on Commission

GLODWICK ROAD, OLDHAM
COMMERCIAL WORKS.

Telephone: MAIn 3797

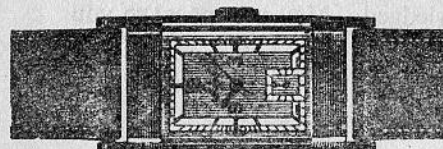
Royal Exchange Tuesday and Friday, Pillar J2

ANYWHERE
ANYHOW
ANYTIME



BY LAND, SEA OR AIR.
For your next holiday, day
outing, or journey of any
kind, consult...

STANTON—Travel Agency
112 UNION STREET, OLDHAM



You can depend on a watch
bought at

JOSEPH HOWELL & SONS

THE JEWELLERS DOWN MUMPS

8-10 MUMPS, OLDHAM MAIn 4804

For...

REPAIRS & RENOVATIONS

Telephone: MAIn 4210

Frank L. Ridgway

PLUMBING
CONTRACTOR

53 Henshaw Street, Oldham

REGENT HOTEL

Proprietor: James S. Parkinson

Make the REGENT the rendezvous for
first class entertainment

MARKET PLACE and Corner of
MANCHESTER ST. - OLDHAM

Telephone: MAIn 3527

FOOTBALL
MATCHES

PRIVATE PARTIES
specially catered for

SANDY'S TOURIST AGENCY

Proprietor: A. F. Campbell

Official Agents for
AUTY'S - ARROWSMITH'S - BATTY-HOLT
SMITH'S CONTINENTAL & BRITISH
and SHEARING'S TOURS

Agent for all BUTLIN'S HOLIDAY CAMPS

5 ABBEY HILLS ROAD
OLDHAM
Phone: MAIn 6917

Also in preparation is the new training ground adjacent to our Pavilion and which we hope to have completed and in use for training by the second week in July. This training ground will be big enough to play a game on, and it is the intention of the Committee to allow it to be used by schoolboys and juniors, and to have a special training session for the development of local talent. The Committee will be amply repaid for the expenditure that is necessary for this ground, open spaces for our local juniors are far too few, and if we receive one potential star per season, we will be satisfied.

Do not forget Monday night at 6-30, this is our last League engagement for 1954-55. Our visitors will be the Hull team. We hope to have a grand finale to our season's campaign, and to have a good attendance of spectators.

OUR VISITORS

It is with pleasure that to-day we entertain the Leigh Club, who like ourselves believe in their players playing the open game, for it is this which makes a Rugby League game worth watching.

The Leigh Club was formed in 1877, and they are founder members of the Northern R.F. Union. They have had their ups and downs like all Clubs, but there is great enthusiasm in Leigh for our game, and they must rank as one of the most progressive Clubs in post-war football.

The Leigh ground at Kirkhall Lane is equipped for floodlight football, being the only other Club in the League besides Bradford Northern to be so equipped.

Our team to-day will have to be at the height of its form to overcome our visitors who appear to be finishing the season in a blaze of glory. Last Saturday they defeated Warrington at Leigh by fourteen points to five points, thereby doing us a good turn in our efforts to secure the Lancashire League Championship.

THE LATE JOHN FEATHER

Once again we remind you that a subscription list has been opened for the dependants of the late John Feather. Our Club has donated the sum of £100 to the fund. Subscriptions may be sent to the Secretary, Pavilion, Watersheddings, and will be officially acknowledged. May we appeal to you to give generously to this fund.

LEAGUE SEMI-FINAL

The following are the prices of admission for the Semi-final of the League to be played at Watersheddings on Saturday, April 23rd, 1955:—
Ground 2/6; Paddock 3/-; Side Stands 3/6; Centre Stand (standing) 4/6; "C" Stand (Waterhead end) 3/6; Enclosure Seats 7/6; "E" Stand Seats 7/6; Old Age Pensioners 9d.; Boys 3d.

This match is not an "all ticket match."

Keep dry with . . .

"STONE-DRI"

(Registered)

WEATHERWEAR

Branches at WAKEFIELD, ROCHDALE,
ASHTON, BRADFORD, LEIGH, Etc.

Direct Raincoat Co.
102, YORKSHIRE ST., OLDHAM

SHOP & OFFICE FITTER — POLISHING

WALTER MILLS

(Proprietor: A. Mills)

Joiner, Cabinet Maker, Etc.

Repairs and Alterations a Speciality

5 GARFITT STREET, OLDHAM
off ROCK STREET

Terms: MONTHLY — Phone: MAIn 3574

R. Boardman & Co.

ALE & STOUT BOTTLERS
Mineral Water Manufacturers

Try our . . .
"SPECIAL" GRAPE FRUIT CRUSH
Obtainable in the Pavilion

ASHTON - U - LYNE
Telephone: ASHton 2310

Brands of Petrol for Sale
NATIONAL BENZOLE, ESSO EXTRA, CLEVECOL
SHELL, DOMINION and POWER

Telephone - MAIn 3404

DIESEL FUEL SUPPLIERS

Oldham Service Station

Proprietors: William Leigh Ltd.

BOTTOM O'TH' MOOR, OLDHAM

Our Motto—"Service to the Public"

ALL GRADES OF OIL &
ACCESSORIES IN STOCK

Hours of Business:
Weekdays: 7-30 a.m. to 9-0 p.m.
Sundays: 8-30 a.m. to 9-0 p.m.