

LEN HUTTON

*gives his name
to the best . . .*

LITESOME

*cricket clothing
of all types*

The same high-quality materials,
superb cut and proved design
goes into all

LITESOME
Sportswear

"BEST IN THE FIELD"
for all sports



To mention a few 'LITESOME'
exclusives—

- ★ WORLD-FAMOUS
SUPPORTERS
- ★ "GRAND SLAM"
CUSHION-FOOT SOCKS
- ★ "POSITEX" non-shrink
FOOTBALL STOCKINGS

Every good Sports Dealer and
Outfitter stocks "LITESOME"
ask for them by name.



Sole Manufacturers—
FRED HURTLEY & SON, LTD.,
Dept, 254, KEIGHLEY, Yorks.

THE NORTHERN RUGBY FOOTBALL LEAGUE

League Championship Final

WARRINGTON v. OLDHAM

SATURDAY
MAY 14th

Kick-off 3 p.m.

At Maine Road
Manchester



OFFICIAL PROGRAMME - - - Price 6d.

Don't just
ask for BEER



DEMAND A
Dutton's

HIGHLIGHTS OF THE YEAR.

- 17th July, 1954. Great Britain lose the Third Test to Australia who win the Ashes for the second time since 1920. Tour receipts of £A.100,209/5/8d. easily smash Britain's previous record of £59,382/3/1d.
- August, 1954. Great Britain beat New Zealand in two of three Test Matches.
- 6th October, 1954. Yorkshire win the County Championship.
- 23rd October, 1954. Halifax win the Yorkshire County Cup and Barrow win the Lancashire Cup.
- November, 1954. Great Britain win the first World Cup Competition.

	P.	W.	D.	L.	T.	For		T.	Against		Pts.
						G.	Pts.		G.	Pts.	
Great Britain ...	3	2	1	0	15	11	67	6	7	32	5
France ...	3	2	1	0	10	10	50	7	5	31	5
Australia ...	3	1	0	2	12	8	52	10	14	58	2
New Zealand ...	3	0	0	3	4	11	34	18	14	82	0

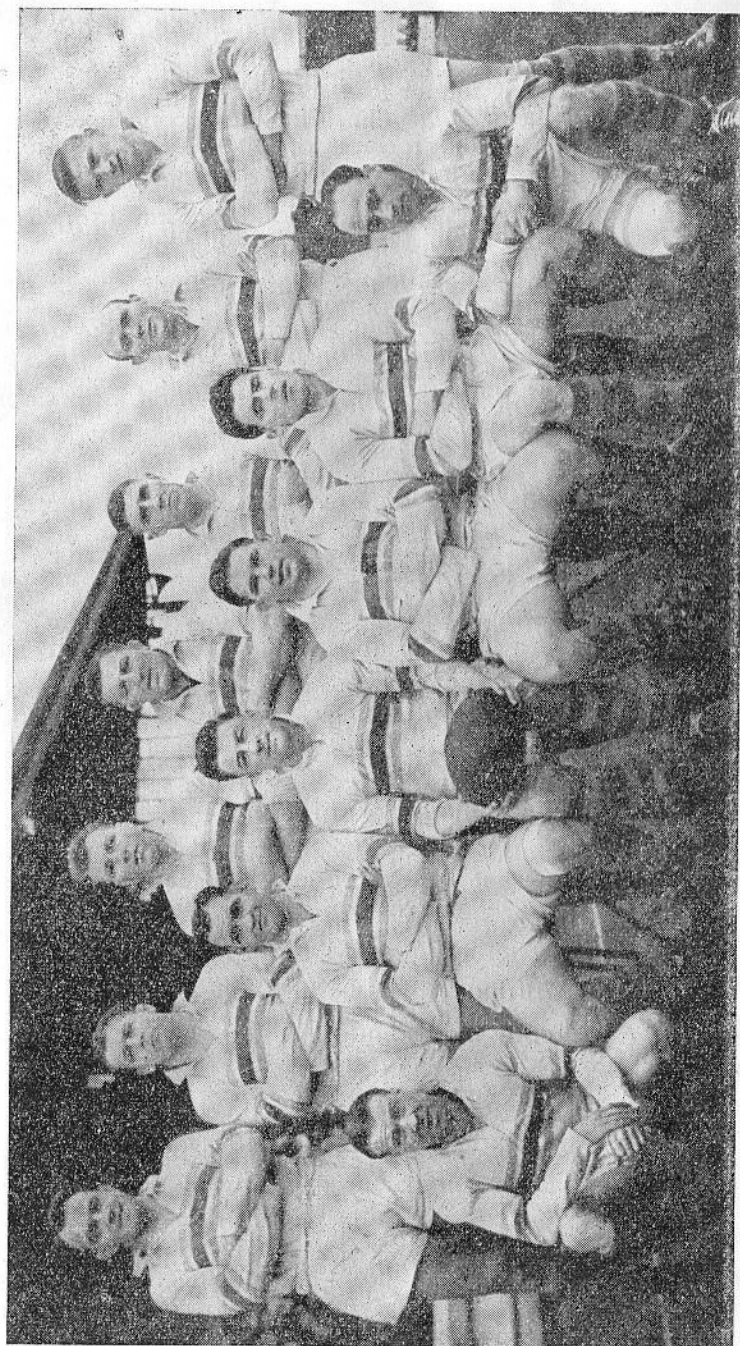
Play-off: Great Britain — 16 pts. France — 12 pts.

- 25th and 28th November, 1954. Australia and New Zealand teams play in California.
- 26th March, 1955. Cumberland win the Amateur County Championship.
- 9th April, 1955. England beat France by 36 pts. to 2 pts. in the Junior International match.
- 13th April, 1955. England beat France by 15 pts. to 7 pts. in the first Rugby League Services International.
- April, 1955. Barrow win the Cup.
Leeds win the Yorkshire League.
Warrington win the Lancashire League.
- 14th May, 1955. Today the League Championship Final will be decided.

And what of the immediate future?

In the close season France will tour Australasia and in September a new Zealand touring team will arrive in this country. Three Test matches will be played—at Swinton, Odsal Stadium and Headingley.

The dates and details of ticket arrangements for these matches can be obtained from the R.L. Offices, 180 Chapeltown Road, Leeds, in late May.



WARRINGTON TEAM

Back Row: G. Lowe, T. McKinney, S. Phillips, D. Naughton, R. Ryan, B. Bevan, J. Challinor.
Front Row: G. Helme, E. Frodsham, A. Naughton (Captain), H. Bath, L. Horton, J. Honey.

Photograph by courtesy of Warrington Guardian Series.

PEN PICTURES OF THE WARRINGTON TEAM.

ERIC FRODSHAM.—Full back. 5ft. 9ins., 12st. 12lb., age 30. Commenced his career with St. Helens, being subsequently transferred to Warrington in 1948. Has been regular first team full back since 1950. A fine positional player, safe fielder of the ball and a fearless tackler.

BRIAN BEVAN.—Right wing threequarter. 5ft. 8½in., 11st. 10lb., age 30. Native of Sydney, Australia. Played trials with Warrington whilst serving in the Australian Navy in 1945 and returned the following year after demobilisation to become one of the most colourful players the game has known. Created a new World Rugby League record in March this year when he scored his 500th try. Elected Rugby League player of the year in 1954/55.

JAMES CHALLINOR.—Right centre threequarter. 6ft., 12st 7lb., age 20. The youngest regular member of the side. Originally a wing threequarter but has fitted into the centre position admirably. Won three medals in his first season (last season) in professional football. Strong, speedy and a difficult player to tackle.

ALBERT NAUGHTON.—Left centre threequarter. 5ft. 11ins., 12st 6lb., age 26. Captain of the team. Transferred from Widnes in 1949 at the then record fee of £4,600. Member of the successful British World Cup Team which won the World Trophy in France this year. Has represented his Country and County on many occasions.

LEN HORTON.—Left wing threequarter. 6ft., 12st. 8lb., age 21. Born in Sydney, Australia. Played for Qantas Airways team, Darwin, before coming to England 18 months ago. Has played mostly at centre but appears equally at home in the wing position. Speedy and a good ball handler.

JAMES HONEY.—Stand off half. 5ft. 6ins., 10st 5lb., age 29. Signed from the St. Helens club this season and has proved to be a grand utility player. Is very fast off the mark and always dangerous in possession. Sound defensive player.

GERRY HELME.—Scrum half. 5ft. 6ins., 10st 6lb., age 31. Longest serving member of the team. A fine player who has earned practically every honour in the game. Twice winner of the Lance Todd Trophy as the outstanding player in the 1950 and 1954 Cup Finals. One of the stars of the 1954 British Rugby League team in Australia and of Britain's World Cup team.

DAN NAUGHTON.—Front row forward. 6ft., 15st 6lb., age 30. Elder brother of club captain Albert. Another ex Widnes player transferred to Warrington in 1953. Member of the 1950 Great Britain Touring team to Australia. An international and a first class forward both in scrummaging and open play.

TOM MCKINNEY.—Hooker. 5ft. 9½ins., 14st 4lb., age 28. Signed from Salford in January this year. Considered No. 1 hooker in the game. Member of the 1954 Great Britain Touring team "down under," playing in all three Tests against Australia.

GERRY LOWE.—Front row forward. 6ft. 1½ins., 14st 11lb., age 27. Former Warrington Rugby Union player. Represented Lancashire County Rugby League team this season. A grand worker and good handler and tackler.

SIDNEY PHILLIPS.—Second row forward. 6ft., 14st 11lb., age 22. Son of well-known Rugby League referee, George Phillips. Discovered in Widnes junior football two seasons ago. A strong, forceful and constructive footballer.

HARRY BATH.—Second row forward. 5ft. 9½ins., 14st. 10lb, age 30. A native of Brisbane, Australia. Considered to be one of the finest second row forwards in the game. First sampled English Rugby League Football with Barrow in 1947. Joined Warrington in 1948. One of the League's leading goal-kickers.

BOB RYAN.—Loose forward. 5ft. 9ins., 13st 12lb., age 30. A native of Wigan who joined Warrington in 1945 from a junior club. Member of the 1950 Great Britain Touring team to Australia. A grand, constructive footballer and a tireless worker.

NORTHERN RUGBY FOOTBALL LEAGUE.

	P	W	L	D	Gls	For		Against		Pts	Pts
						Trs	Pts	Gls	Trs		
Warrington ...	36	29	5	2	119	160	718	66	63	321	60
Oldham ...	36	29	5	2	117	133	633	65	61	313	60
Leeds ...	36	26	8	2	131	135	667	84	70	378	54
Halifax ...	36	26	9	1	117	115	579	67	45	269	53
Wigan ...	36	26	9	1	107	143	643	92	48	328	53
Leigh ...	36	25	9	2	156	142	738	78	81	399	52
St. Helens ...	36	25	10	1	125	127	631	89	53	337	51
Barrow ...	36	24	12	0	97	129	581	82	74	386	48
Featherstone ...	36	23	12	1	115	114	572	92	80	424	47
Workington ...	36	23	13	0	99	125	573	68	85	391	46
Huddersfield ...	36	22	14	0	122	182	790	102	93	483	44
Rochdale ...	36	20	13	3	93	70	396	74	66	346	43
York ...	36	21	15	0	95	83	439	85	68	374	42
Hunslet ...	36	20	16	0	123	112	582	93	97	477	40
Whitehaven ...	36	18	15	3	89	76	406	89	82	424	39
Wakefield ...	36	18	18	0	110	123	589	107	121	577	36
Bradford N. ...	36	17	17	2	100	92	476	101	91	475	36
Keighley ...	36	18	18	0	92	83	433	108	109	543	36
Hull ...	36	16	17	3	92	121	547	87	104	486	35
Swinton ...	36	16	19	1	79	80	398	101	83	451	33
Castleford ...	36	13	19	4	115	96	518	105	102	516	30
Widnes ...	36	13	23	0	74	59	325	92	98	478	26
Bramley ...	36	11	24	1	112	70	434	124	118	602	23
Liverpool ...	36	11	24	1	102	66	402	117	116	582	23
Hull K.R. ...	36	10	26	0	61	75	347	135	162	756	20
Salford ...	36	7	26	3	57	55	279	82	121	527	17
Doncaster ...	36	8	27	1	86	58	346	116	144	664	17
Batley ...	36	7	29	0	67	48	278	127	141	677	14
Blackpool ...	36	7	29	0	72	53	303	138	161	759	14
Belle Vue R. ...	36	7	29	0	52	48	248	123	140	666	14
Dewsbury ...	36	5	31	0	45	55	255	132	151	717	10

COACHING COURSES.

A Coaching Course is being held at Lilleshall, Shropshire, from Saturday, July 2nd, to Saturday, July 9th, and is of special interest to those who are in charge of club teams, or who would like to take an active part in coaching in the future. The all-inclusive fee is £5/5/0d. and a few vacancies still remain.

This course is designed to improve the coaching technique of those attending. Many coaches of senior teams have previously attended these courses and have found them most beneficial. An expert player is not necessarily a good coach. Coaching technique has to be acquired. A team captain who more often than not has to supervise his players in their training sessions should attend this course, which is open to all. Many of the "big names" in the game attend but officials in the Junior and Schoolboys Leagues are also welcome, as are aspiring referees who will find it advantageous to acquire a thorough knowledge of the "other side" of the game.

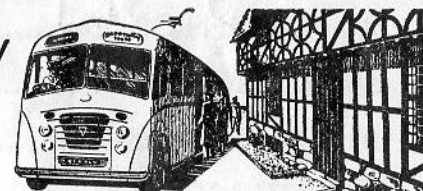
THE LEAGUE TABLE.

As there are thirty-one clubs in the League, it would be impracticable for each to play all others home and away. This would mean playing sixty League games in the season, whereas the number which clubs prefer is thirty-six. To achieve this number, the clubs are divided into two County Leagues, each containing fifteen clubs and the "odd man out" (this season it was Hull Kingston Rovers) plays in neither County League. Each club then plays the other fourteen clubs in its own County League and four clubs in the other County League, the latter being determined by a formula. All matches played count towards the League Championship, but matches played between clubs of the same County count also in the County League Championship. The bottom Yorkshire Club, i.e. the "odd man out" plays nine Yorkshire clubs and nine Lancashire clubs.

The Final League Table does not necessarily reflect the relative merits of the teams and the Championship is, therefore, determined by a "play-off" of the top four clubs. The first and second clubs play at home against the fourth and third respectively and the final is played on neutral ground.

Apply to the Rugby League Office in June for a pamphlet giving dates and prices of tickets for all Test and International matches.

Happiway Tours



CHOOSE YOUR 1955 HOLIDAY NOW

SPECIAL TOURS (INCL. WHIT.)				DEPARTING EVERY SUNDAY			
4 Days Torquay	£8 8 0	7 Days Torquay	£14 14 0
4 Days Bournemouth	£8 8 0	7 Days Bournemouth	£14 14 0
				7 Days Ilfracombe	£14 14 0
				8 Days Torquay	£16 16 0
				7 Days London/Bournemouth	£15 10 0
DEPARTING EVERY SATURDAY				DEPARTING EVERY MONDAY			
7 Days Torquay	£14 14 0	7 Days Bournemouth	£14 14 0
7 Days Bournemouth	£14 14 0	7 Days Ilfracombe	£14 14 0
7 Days Ilfracombe	£14 14 0	5 Days London	£11 5 0
7 Days Eastbourne	£14 14 0	7 Days Newquay/Penzance	£16 10 0
8 Days Newquay	£17 17 0				
9 Days Newquay	£19 19 0				
SPECIAL CONTINENTAL TOURS							
13 Days Lourdes and the Shrines of France	44 Gns.			
14 Days Grand Tour of Switzerland	£55			

PASSENGERS CAN JOIN BRITISH TOURS AT
WARRINGTON, OLDHAM or MANCHESTER

Apply for free illustrated brochures from:—

Tel.: CEN 4707

HAPPIWAY TOURS LTD., 10, Oxford Road, Manchester, 1

Also at 83 RENSHAW STREET, LIVERPOOL
81 UNION STREET, OLDHAM

Tel.: ROYAL 8585
Tel.: MAIN 3676

THE TEAMS

WARRINGTON

- 1 FRODSHAM, E.....Full Back
- 2 BEVAN, BWing Threequarter
- 3 CHALLINOR, J.....Centre Threequarter
- 4 NAUGHTON, A. (Capt.)...Centre Threequarter
- 5 HORTON, L.....Wing Threequarter
- 6 HONEY, J.....Out-half
- 7 HELME, G.Scrum-half
- 8 NAUGHTON, D.Prop Forward
- 9 McKINNEY, T.Hooker
- 10 LOWE, G.....Front Row Forward
- 11 PHILLIPS, S.Second Row Forward
- 12 BATH, H.Second Row Forward
- 13 RYAN, BLoose Forward

Referee—A. HILL, Dewsbury
Touch Judges—J. Horsfall and E. Hopkins

OLDHAM

- 1 STIRRUP, F.Full Back
- 2 BARROW, R.....Wing Threequarter
- 3 CRACKNELL, R.Centre Threequarter
- 4 DAVIES, A. (Capt.)Centre Threequarter
- 5 O'GRADY, T.Wing Threequarter
- 6 DALEY, F.....Out-half
- 7 PITCHFORD, F.....Scrum-half
- 8 OGDEN, H.....Prop Forward
- 9 KEITH, J.Hooker
- 10 JACKSON, K.....Front Row Forward
- 11 WINSLADE, C.Second Row Forward
- 12 LITTLE, S.Second Row Forward
- 13 GOLDSWAIN, B. V.Loose Forward

Reserves—Etty, J.; Watson, J. H.

If you are wise you will

GET THESE PUBLICATIONS NOW
from the Rugby Football League, 180, Chapeltown
Road, Leeds, 7

MANUAL OF RUGBY LEAGUE COACHING	Price 2/- Postage 3d.
KNOW THE GAME	Price 2/- Postage 3d.
OFFICIAL GUIDE	Price 2/- Postage 3d.
Ready in August.	
LAWS OF THE GAME	Price 3d. Post free

TWO DIVISIONS.

Most supporters are aware that during the season the Management Committee of the Northern Rugby Football League proposed a scheme for Two Divisions. A proposal of this nature is an amendment to existing Bye-laws and, as such, requires a two-thirds majority of votes in order to become effective. There are thirty-one clubs in the League and nineteen voted for Two Divisions — two short of a two-thirds majority.

The action of the Management Committee in submitting its proposal was based on a resolution passed by members at an Extraordinary General Meeting in May, 1954. This resolution called for a review of the existing system with a recommendation that it be amended in order to increase competitive interest in League games over a greater part of the season. It was felt that the only clubs interested in the results of matches played in the second half of the season were those engaged in the struggle for the top four positions. Facts and figures definitely prove this point.

In April, 1954, there were twenty-two games (excluding holiday fixtures) which had no bearing on the top four positions. All but one of these yielded below average receipts for the home clubs. The receipts were thirty-eight per cent. below average. The one exception was when the home club were playing their most attractive home fixture of the season.

Is Two Divisions the answer?

The majority of clubs think so. They feel that the poorer clubs cannot attract less support than they are doing at the moment, but will be substantially better off financially because of increased support from the Levy Fund. In the meantime, aggregate attendances for all matches will be increased enormously. First Division games alone might attract aggregate attendances exceeding those for all League games at present. Second Division clubs fighting for promotion will also enjoy increased support.

The objectors to the scheme feel that it might lead to the extinction of some of the poorer clubs. In answer to that it is said that some clubs are fighting desperately for existence under the present system.

There have been criticisms of the two-thirds majority rule and references to the "tail wagging the dog." However, stability is the first essential of any organization and this would be destroyed if a simple majority only were required to amend Bye-laws.

The general feeling among the supporters of the game is that Two Divisions ought to be given a trial. No-one can definitely foretell whether it will be an improvement or not. This can only be proved by trying it and a three years' trial is what the Management Committee is advocating.

To be published in July:—

A GUIDE TO RUGBY LEAGUE FOOTBALL FOR REFEREES, PLAYERS AND CLUBS

This publication, price 2/., postage 3d., will be on sale in July of this year. Copies can be reserved now at the Rugby League Offices. It contains material of interest to all supporters of the game—referees, players, club officials and spectators.

Players of Quality

choose Quality Tailoring

The British Rugby
League Official
Touring Team

selected

Alexandre
Blazers & Flannels

for their

1954 Australian Tour

BRANCHES THROUGHOUT BRITAIN



SPECIALLY FOR SPORTSMEN

The Rugby League Medal is only one of the many famous awards manufactured by Fattorini & Sons Ltd., who have supplied medals and trophies for over half a century for Britain's most important Sports events.

In our Bradford factory we manufactured the Blazers for the Rugby League team touring Australia in 1950, and have also made International Caps for many years.

The same craftsmen who supply the needs of Internationals are available to local clubs. Our representative will be pleased to give full particulars to club secretaries.

THE FATTORINI AND SONS LTD. GROUP OF COMPANIES
FATTORINI AND SONS LIMITED

TROPHIES, CUPS, MEDALS, BADGES

Factory—BRADFORD WORKS, BARR STREET, BIRMINGHAM
Showrooms—2, TYRREL STREET, BRADFORD

BRADFORD TEXTILE (SALES) LTD.

Specialists in CLUB BLAZERS, CAPS and SPORTS CLOTHING
ST. BLAIZE WORKS, CANAL ROAD, BRADFORD

PEN PICTURES OF THE OLDHAM TEAM.

F. STIRRUP.—5ft. 7ins., 10st. 7lb., age 28. Frank started playing Rugby in his home town, Leigh, and turned out for the senior club there and for Salford before joining Oldham. A fine player who has gained County honours, he was formerly Scrum Half, but took over the Full back berth when Bernard Ganley was injured.

R. CRACKNELL.—5ft. 10ins., 12st., age 26. Formerly with Huddersfield, Dick was transferred to Oldham last season. A versatile player who can turn out on either wing, he has played for Yorkshire, England and Great Britain.

R. BARROW.—5ft. 10ins., 13st 4lb., age 23. Born in Oldham he played for the Rugby Union team before joining the League club.

A. DAVIES.—5ft. 10½ins., 13st 7lb., age 22. Born in Leigh, he played in junior clubs there before signing for Oldham. He has represented Lancashire and England, and is captain of the Oldham team this season. One of the highest scoring centres, he has run in 28 tries this season.

J. ETTY.—6ft., 13st., age 28. Transferred from Batley, his birthplace, this season, John started playing Rugby in the local junior league and had trials for Dewsbury before signing for Batley. Has played for Yorkshire and was in the British Empire team which played against Wales in 1951.

T. O'GRADY.—5ft. 10½ins., 13st., age 21. A product of local junior football, Terry joined Oldham in 1951. An outstanding member of the 1954 Australasian touring team, he played in two tests against the Australians and all three against New Zealand.

F. PITCHFORD.—5ft. 5ins., 11st., age 20. Born in Leigh, Frank played in school and junior football there and joined Oldham at the beginning of the 1952/3 season. One of the best Scrum Halves in the game.

F. DALEY.—5ft. 8½ins., 12st 7lb., age 29. Started his Rugby career in Wigan, his home town, and played for Leigh before coming to Oldham. Has played for Lancashire.

K. JACKSON.—6ft.; 14st. 6lb., age 25. A Lancashire County player, he played for St. Mary's, the local junior team before joining the senior club. Played Rugby Union in the Services.

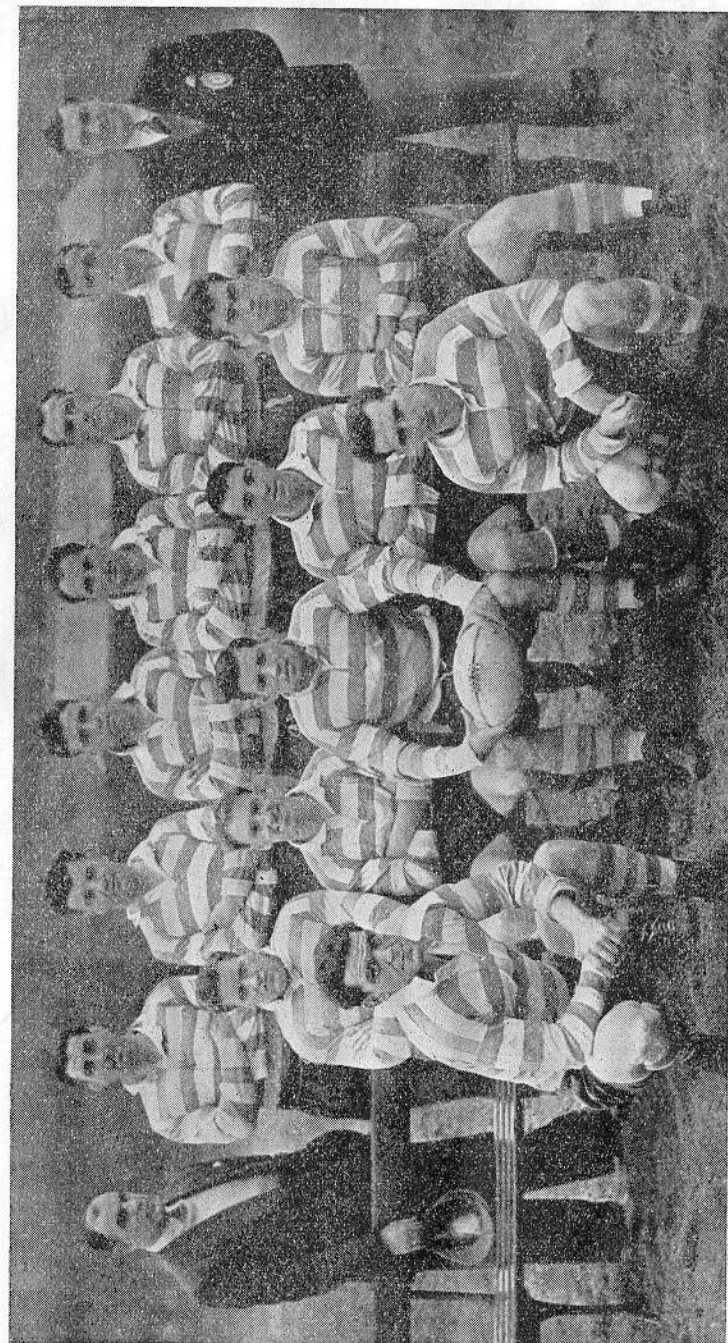
J. KEITH.—5ft. 11ins., 12st 10lb., age 29. Started playing for Hunslet schools in Leeds, his birthplace. Played for England and Yorkshire as a schoolboy.

H. OGDEN.—6ft., 15st. 8lb., age 31. Born in Oldham, Harry played in school and junior football before joining the team.

S. LITTLE.—6ft., 14st., age 23. Born near Carlisle, he played for Cumberland and Harlequins at Rugby Union before becoming a League player. Since joining Oldham, he has turned out for Cumberland at the Rugby League code.

C. WINSLADE.—6ft. 1½ins., 15st. 4lb., age 23. Born in Maesteg, Glamorgan, he was a Welsh schoolboy Rugby Union international and Glamorgan County player. Joined Oldham in January, 1950, and has played in four internationals since then.

B. GOLDSWAIN.—5ft. 11½ins., 13st. 8lb., age 32. Bryn played for the R.A.F. at Rugby Union and for his school in Merthyr Tydfil, his birthplace, before joining Hull K.R. He was transferred to Oldham and is one of the game's outstanding loose forwards. He is the regular choice for this position in the Welsh team and has turned out seventeen times since 1947.



OLDHAM TEAM

Back Row (left to right): G. Jenkins (coach), B. Goldswain, H. Ogden, K. Jackson, S. Little, C. Winslade, J. Keith, J. Etty.
Seated: R. Barrow, F. Stirrup, A. Davies (Captain), D. Cracknell (Vice-Captain), T. O'Grady.
Front: F. Daly, F. Pitchford.

Photograph by courtesy of the Oldham Chronicle

LANCASHIRE TABLE

	P	W	L	D	Gls	For	Against				
						Trs	Pts	Gls	Trs	Pts	Pts
Warrington ...	28	22	4	2	97	125	569	56	48	256	46
Oldham ...	28	22	4	2	90	103	489	53	43	235	46
Wigan ...	28	20	7	1	86	116	520	71	43	271	41
St. Helens ...	28	19	8	1	94	97	479	61	34	224	39
Leigh ...	28	17	9	2	106	90	482	63	64	318	36
Barrow ...	28	18	10	0	77	95	439	68	61	319	36
Workington ...	28	17	11	0	71	92	418	50	58	274	34
Rochdale ...	28	14	12	2	68	47	277	61	59	299	30
Whitehaven ...	28	12	13	3	64	54	290	67	65	329	27
Swinton ...	28	12	15	1	51	54	264	78	66	354	25
Widnes ...	28	8	20	0	46	36	200	73	86	404	16
Liverpool ...	28	6	21	1	70	45	275	87	93	453	13
Belle Vue R. ...	28	6	22	0	41	36	190	94	111	521	12
Blackpool ...	28	5	23	0	56	34	214	110	130	610	10
Salford ...	28	3	22	3	46	35	197	71	98	436	9

YORKSHIRE TABLE

	P	W	L	D	Gls	For	Against				
						Trs	Pts	Gls	Trs	Pts	Pts
Leeds ...	28	23	4	1	105	116	558	66	53	291	47
Halifax ...	28	21	6	1	96	96	480	58	34	218	43
Featherstone ...	28	20	7	1	82	86	422	64	60	308	41
Huddersfield ...	28	18	10	0	88	140	596	74	66	346	36
Hunslet ...	28	17	11	0	87	92	450	66	67	333	34
York ...	28	17	11	0	78	70	366	65	49	277	34
Keighley ...	28	17	11	0	70	66	338	74	72	364	34
Wakefield ...	28	15	13	0	90	97	471	80	87	421	30
Bradford N. ...	28	14	12	2	77	79	391	78	73	375	30
Hull ...	28	12	13	3	75	96	438	70	80	380	27
Castleford ...	28	8	16	4	88	61	359	91	84	434	20
Bramley ...	28	7	20	1	86	51	325	96	90	462	15
Doncaster ...	28	5	22	1	65	40	250	95	114	532	11
Batley ...	28	5	23	0	54	34	210	96	111	525	10
Dewsbury ...	28	4	24	0	33	39	183	101	123	571	8

CHALLENGE CUP FINAL AT WEMBLEY, 1956

Tickets for the above can be booked now from the Rugby Football League, 180, Chapeltown Road, Leeds, 7. Prices are 25/-, 12/6, 10/6, 6/6 and 3/-. All applications should be accompanied by a stamped addressed envelope.

For the
best report
of the match

read

JIMMY BREEN

in tonight's



Evening Chronicle SPORTS PINK FINAL

ON SALE EVERY SATURDAY
FOR ALL SUMMER SPORTS

Also the brightest features

CRICKET BY CYRIL WASHBROOK

BOXING IS MY LIFE By Harry (Kid) Furness

and

SPORTS CARTOON SECTION