

Telephone : MAIn 2972

Haigh's Marine Stores Limited

Registered Office : 21 CROSS STREET, OLDHAM

IRON AND STEEL MERCHANTS

Bulk Buyers of

MIXED RAGS, SCRAP LEAD, COPPER, BRASS, COPPER WIRE, Etc.

DRAWING ROPES, STRING, HEMP, TWINE,
COTTON, ROLLER CLOTH, CLEARER CLOTH,
PAPER, TYRES, TUBES

All goods collected

Terms : CASH

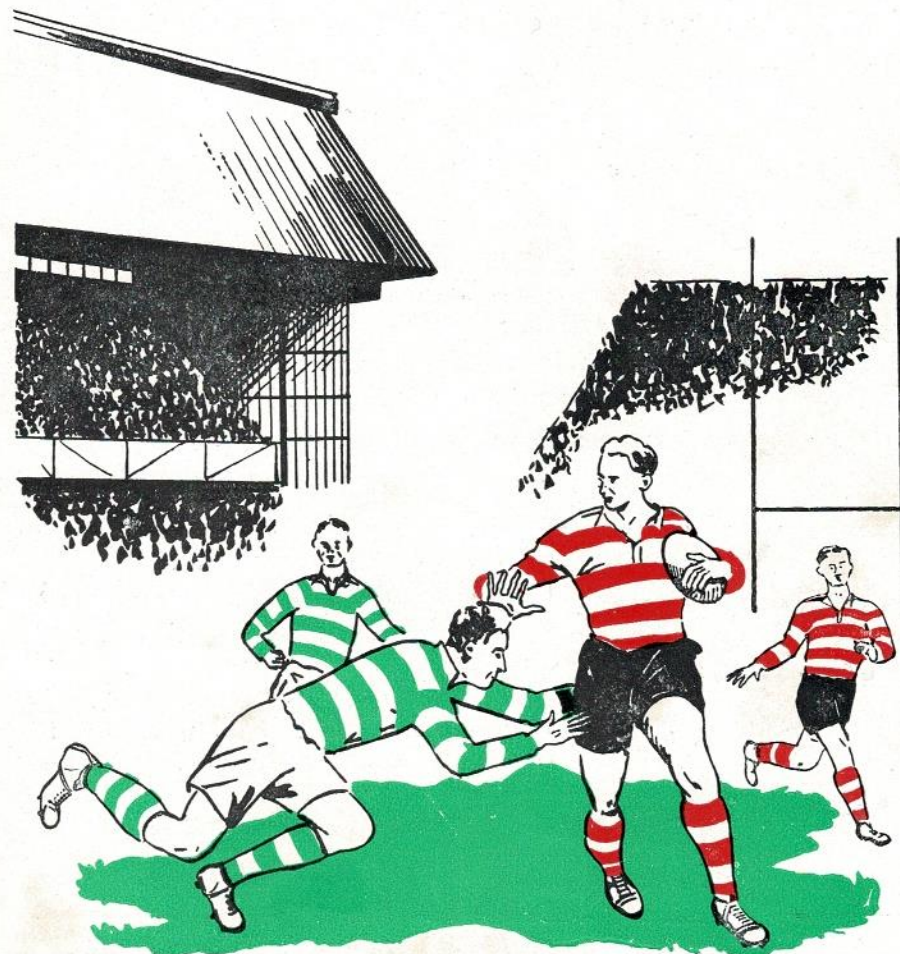
Distance no object

CROFTBANK MILL . . . OLDHAM

Fixtures for the Season

1955-56	Opponents	Venue	K.O.	1955-56	Opponents	Venue	K.O.
Aug. 13—Rochdale H. (Charity)	Away	3-0	26—Swinton (Mon.)	Home	2-30
20—Broughton R.	Away	3-0	27—Blackpool (Tues.)	Away	2-30
27—Blackpool (Lancs. Cup)	Away	3-0	31—Whitehaven	Home	2-30
30—Rochdale H. (Tues.)	Away	7-0	Jan. 2—Workington (Mon.)	Away	2-30
Sept. 3—Hunslet	Home	3-0	7—Whitehaven	Away	2-30
10—Leeds	Away	3-0	14—Workington	Home	2-30
17—Warrington	Home	3-0	21—Widnes	Away	2-30
24—York	Away	3-0	28—Rochdale H.	Home	3-0
Oct. 1—Featherstone	Home	3-0	Feb. 4—Leigh	Home	3-0
8—Hunslet	Away	3-0	11—1st Round C.C.		3-0
15—Barrow	Home	3-0	18—Wigan	Home	3-0
22—Warrington	Away	3-0	25—Featherstone	Away	3-0
29—New Zealand	Home	3-0	Mar. 3—2nd Round C.C.		3-0
Nov. 5—Leigh	Away	3-0	10—York	Home	3-0
12—Liverpool	Home	3-0	17—Blackpool	Home	3-0
19—Wigan	Away	2-30	24—3rd Round C.C.		3-0
26—Widnes	Home	2-30	30—Swinton (G.F.)	Away	3-0
Dec. 3—Liverpool	Away	2-30	31—Leeds (E.S.)	Home	3-0
10—Salford	Away	2-30	Apr. 2—Barrow (E.M.)	Away	3-0
17—Salford	Home	2-30	7—Broughton R.	Home	3-0
24—St. Helens	Away	2-30	14—St. Helens	Home	3-0

OLDHAM FOOTBALL CLUB



PROGRAMME...THREEPENCE

... For good food



Shops & Restaurants

You'll do better at a U.C.P. Restaurant
in fact "A WINNER EVERY TIME"

19 HIGH STREET, OLDHAM

And many Shops and Restaurants
in Manchester and throughout the North



OFFICIALS

President : W. HOWARD, M.B.E., J.P.

Vice-President : J. COULTHARD, Esq.

Hon. Treasurer : A. CORDWELL, Esq.

Committee :

Messrs. F. W. Ashworth, A. F. Campbell, F. S. Holt, T. Hurtley, F. Knowles,
J. W. Lewthwaite, F. Ridgway, E. Thomas, E. Watkins

Club Doctor : Dr. JOHN OLIVER

Secretary : Mr. H. SUMMERSCALES

Pavilion Telephone No. : MAIn 4865

**Always
a winning
team**

GRIFF JENKINS

Oldham Rugby League Club
coach

JIMMY BREEN

The leading Rugby League writer

They will keep you up-to-date with all the
Rugby League news and gossip

IN THE OLDHAM EDITION OF THE

MANCHESTER EVENING CHRONICLE

No. 1—Saturday, August 20th, 1955

Kick-off 3-0 p.m.

OLDHAM v. KEIGHLEY

WATERSHEDDINGS NEWS AND VIEWS

Once again the season opens at this famous ground, and it will be the eighty-third season for the Club.

This opening of the season is by way of a friendly match with Keighley brought about through the expunging of the fixtures of Broughton Rangers, who should have been our opponents away this day. One is filled with regret at the passing of such an old Club as Broughton Rangers, one of the founder members of the League in 1895.

The close season in the Rugby League has been one of quietness, with an absence of news from various Clubs as to the signing of new players, in fact as each succeeding season comes along it appears to be one of intense silence. The only news that one hears is that such a Club has made a loss on the seasons working, a very unfortunate state of affairs in our game. Expenditure in the majority of cases exceeds income and there must only be one end to this.

It was with a view to limiting the expenditure of individual Clubs that a Special Meeting of the Rugby League Council was held on August 9th as to the standardization of Players' wages, but this failed to secure the two-third majority to make this a Rule. It was suggested that a payment of £8 for a win and £4 for a defeat, with specified cup-tie bonuses, but this proposition fell on stoney ground. These of course were maximum amounts. The feeling amongst the majority of Clubs is that standardization must come along, but not at the figures stated—a maximum payment of £10 and £5 would have stood a better chance of passing. There is no doubt that a further effort will be made on this standardization, but more time must be given Clubs to consider the proposition, as we are of the opinion that the last effort was rushed and too near the opening of the season.

THE FUTURE

Without attempting to rake amongst the ashes of the past season, when we achieved so much and received so little—only the appreciation of the sporting world was our lot—we must go one better this season and bring one or two cups to Watersheddings.

Whilst we have every confidence in the players on the register, one must face the fact that replacements must at some time be a necessity and the Committee are fully aware of this, and are always on the look-out for the scarce, but ready-made material. We have, however, signed on five players as amateurs, and in these players we can foresee great possibilities of development, and we hope, the stars of the future.

NEW PLAY-THE-BALL RULE

Once again we have another alteration to the Play-the-Ball Rule. This was recently made by the International Conference held in Auckland, New Zealand. If only one good thing emerges from this ruling, it is that

Telephone: BLA 6985

H. C. COOKE

(SPORTS) LTD.

26 JOHN DALTON ST., and
68 CORPORATION ST., MANCHESTER

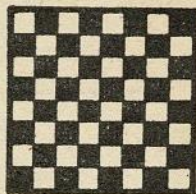
LEADING SPORTS OUTFITTERS TO THE R.L.
RUGBY JERSEYS at last season's prices from 16/6
STOCKINGS in hooped designs from 4/11 per pair
R.L. PATTERN SHORTS from 11/6 per pair

All sizes of Cotton Oxford and
Elmer Cotton Rugby Boots in stock

COOKE'S of MANCHESTER

Suppliers of the 1955 Finalists' complete Kit

THERE'S A
WILSON'S ALE
TO SUIT
EVERY TASTE



THE SIGN OF
QUALITY



WILSON'S BREWERY LTD. - MANCHESTER 10

G. Barlow & Sons

LIMITED

Saloon Coaches for away matches,
Land Cruises and Pleasure Trips,
Weddings and Tours arranged,
also Complete Funeral Furnishers

PERSONAL ATTENTION TO ALL ORDERS

Telephone: MAIn 4301

UNION STREET WEST GARAGE,
OLDHAM

Tom Shaw & Son

(Oldham) Limited

Luxury Coaches for all occasions
Operators of 'Pleasureways Tours'

151 UNION STREET, OLDHAM

Telephone: MAIn 5033/4

THIS SPACE TO LET

apply to

The Secretary,
Oldham Football Club,
Watersheddings,
Oldham

THIS SPACE TO LET

apply to

The Secretary,
Oldham Football Club,
Watersheddings,
Oldham

INSIST ON THE GREEN FINAL

A
L
L
T
H
E
R
E
S
U
L
T
S

OLDHAM

(Red and White)

- 1—GANLEY, W.B./STIRRUP, F.
- 2—CRACKNELL, R.
- 3—BARROW, R.
- 4—DAVIES, A. (Capt.)
- 5—O'GRADY, T.
- 6—DALEY, F.
- 7—PITCHFORD, F.
- 8—OGDEN, H.
- 9—KEITH, J.
- 10—JARMAN, A.
- 11—WINSLADE, C.
- 12—LITTLE, S. D.
- 13—ROGERS, J.

KEIGHLEY

(Emerald Green and Scarlet)

- 1—BLACK
- 2—WARD
- 3—TAYLOR/HOLGATE
- 4—SMITH
- 5—HOLLINDRAKE
- 6—VERRENKAMP
- 7—GALLAGHER
- 8—WOOSEY
- 9—TRAILL
- 10—HOPKINS
- 11—DEVANEY
- 12—RAINES
- 13—HOLBROOK

A
L
L
T
H
E
R
E
S
U
L
T
S

Referee: A. Howgate of Dewsbury

Touch Judges:

J. Grayley, Widnes (Red Flag)

E. Bleasdale, Warrington (Blue Flag)

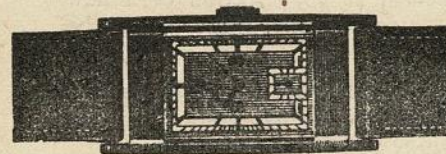
OLDHAM'S OWN SPORTS PAPER

ANYWHERE
ANYHOW
ANYTIME



BY LAND, SEA, OR AIR
For your next holiday, day
outing, or journey of any
kind, consult...

STANTON—Travel Agency
112 UNION STREET, OLDHAM



You can depend on a watch
bought at

JOSEPH HOWELL & SONS

THE JEWELLERS DOWN MUMPS

8-10 MUMPS, OLDHAM. Tel.: MAI 4802

For...

REPAIRS & RENOVATIONS

Telephone: MAIn 4210

Frank L. Ridgway

PLUMBING
CONTRACTOR

53 HENSHAW ST. - OLDHAM
3 TOMMYFIELD - OLDHAM

REGENT HOTEL

Proprietor: James S. Parkinson

Make the REGENT the rendezvous for
First-class Entertainment

MARKET PLACE and Corner of
MANCHESTER STREET, OLDHAM

Telephone: MAIn 3527

F. Knowles & Co. Ltd.

TEXTILE MACHINISTS

Dealers in all classes of Opening, Card Room,
Spinning, Winding and Doubling Machinery

Textile Machinery Bought and Sold on
Commission

GLODWICK ROAD, OLDHAM
COMMERCIAL WORKS

Telephone: MAIn 3797

Royal Exchange Tuesday and Friday, Pillar J2

THIS SPACE TO LET

apply to

The Secretary,
Oldham Football Club,
Watersheddings,
Oldham

all countries playing Rugby League football will be playing to the same Play-the-Ball Rule. Varied interpretations of other rules are still in existence by other countries, and one would like to see some unity on the interpretation of various rules of the game.

What the International Conference have laid down as to Play-the-Ball Rule. The player acting as half back behind the player in possession of the ball stands where he likes, others must be three yards away from this half back. This should be an improvement on last season's Rule as it gives two yards more space to work in. However we shall see if any improvement is made on what some people consider a blot on our game.

BRIEFS

Bryn Goldswain is having a good vacation from his scholastic duties, having been asked by the Rugby League to act as Rugby League Coach at Butlin's Holiday Camp, Filey, for a period of one month. This will not interfere with him playing for this Club when selected.

The Rugby League Guide for the 1955/56 season is now on sale and can be purchased in the Pavilion at 2s. 0d. per copy. This is a handy publication and no Rugby League supporter should be without one.

The new training ground is far from completion, progress having been very slow, but the levelling out and draining has now been completed. What we now require is a wall round the ground and turf to be laid. These are now being put into operation, but will take time.

A new room to our training establishment is being added by the making of a medical room. This will be used by our two honorary Club doctors to diagnose any injuries to players and will also be a physiotherapist room for the use of various lamps for sunray treatment, etc. Thus any injured players will receive treatment on the spot.

We are on the verge of accepting a contract for the erection of a new score board, which will be one of the most up-to-date in the Rugby League. Now that the heavy cost of the score board has been met, we hope that it will be in operation within the next ten weeks.

SUPPORTERS' CLUB NEWS

Once again we hope we are off to a good start, and the first item of news is that we have offered to help financially in the erection of a new score board, which will brave the elements, and when completed, will be second to none in the Rugby League.

On the opening matches, Keighley to-day and Hunslet on September 3rd, we are making a big drive for membership, and we ask you, if you are not a member, please join to-day. Membership is 1s. 0d. per year.

Also on sale will be the Supporters' Year Book, price 1s. 0d., and it covers all last season's matches, records, final table of the Leagues, also a splendid article on Frank Pitchford, and a general review of last season by J. McCullum.

May we offer to all our thanks for past help, and in helping us you are helping a team that we are all proud of.

Keep dry with . . .

"STONE-DRI" (Registered) WEATHERWEAR

Branches at WAKEFIELD, ROCHDALE,
ASHTON, BRADFORD, LEIGH, Etc.

Direct Raincoat Co.
102, YORKSHIRE ST., OLDHAM

SHOP & OFFICE FITTER — POLISHING

WALTER MILLS

(Proprietor: A. Mills)

Joiner, Cabinet Maker, Etc.

Repairs and Alterations a Speciality

5 GARFITT STREET, OLDHAM
off ROCK STREET

Terms: MONTHLY — Phone: MAIn 3574

R. Boardman & Co.

ALE & STOUT BOTTLERS
Mineral Water Manufacturers

Try our . . .

"SPECIAL" GRAPE FRUIT CRUSH
Obtainable in the Pavilion

ASHTON - U - LYNE

Telephone: ASHton 2310

THIS SPACE TO LET

APPLY TO

THE SECRETARY,

OLDHAM FOOTBALL CLUB,

WATERSHEDDINGS,

OLDHAM