

Telephone : MAIn 2972

Haigh's Marine Stores Limited

Registered Office : 21 CROSS STREET, OLDHAM

IRON AND STEEL MERCHANTS

Bulk Buyers of

MIXED RAGS, SCRAP LEAD, COPPER, BRASS, COPPER WIRE, Etc.

DRAWING ROPES, STRING, HEMP, TWINE,
COTTON, ROLLER CLOTH, CLEARER CLOTH,
PAPER, TYRES, TUBES

All goods collected

Terms : CASH

Distance no object

CROFTBANK MILL - - OLDHAM

Fixtures for the Season

1955-56	Opponents	Venue	K.O.	1955-56	Opponents	Venue	K.O.
Aug. 13—	Rochdale H. (Charity)	Away	3-0	26—	Swinton (Mon.)	Home	2-30
20—	Broughton R.	Away	3-0	27—	Blackpool (Tues.)	Away	2-30
27—	Blackpool (Lancs. Cup)	Away	3-0	31—	Whitehaven	Home	2-30
30—	Rochdale H. (Tues.)	Away	7-0	Jan. 2—	Workington (Mon.)	Away	2-30
Sept. 3—	Hunslet	Home	3-0	7—	Whitehaven	Away	2-30
10—	Leeds	Away	3-0	14—	Workington	Home	2-30
17—	Warrington	Home	3-0	21—	Widnes	Away	2-30
24—	York	Away	3-0	28—	Rochdale H.	Home	3-0
Oct 1—	Featherstone	Home	3-0	Feb. 4—	Leigh	Home	3-0
8—	Hunslet	Away	3-0	11—	1st Round C.C.		3-0
15—	Barrow	Home	3-0	18—	Wigan	Home	3-0
22—	Warrington	Away	3-0	25—	Featherstone	Away	3-0
29—	New Zealand	Home	3-0	Mar. 3—	2nd Round C.C.		3-0
Nov. 5—	Leigh	Away	3-0	10—	York	Home	3-0
12—	Liverpool	Home	3-0	17—	Blackpool	Home	3-0
19—	Wigan	Away	2-30	24—	3rd Round C.C.		3-0
26—	Widnes	Home	2-30	30—	Swinton (G.F.)	Away	3-0
Dec. 3—	Liverpool	Away	2-30	31—	Leeds (E.S.)	Home	3-0
10—	Salford	Away	2-30	Apr. 2—	Barrow (E.M.)	Away	3-0
17—	Salford	Home	2-30	7—	Broughton R.	Home	3-0
24—	St. Helens	Away	2-30	14—	St. Helens	Home	3-0

Designed and Printed by T. Crabtree, Nield Street, Oldham

OLDHAM FOOTBALL CLUB



PROGRAMME...THREEPENCE

... For good food

U.C.P.

Shops & Restaurants

You'll do better at a U.C.P. Restaurant
in fact "A WINNER EVERY TIME"

19 HIGH STREET, OLDHAM

And many Shops and Restaurants
in Manchester and throughout the North



OFFICIALS

President : W. HOWARD, M.B.E., J.P.

Vice-President : J. COULTHARD, Esq.

Hon. Treasurer : A. CORDWELL, Esq.

Committee :

Messrs. F. W. Ashworth, A. F. Campbell, F. S. Holt, T. Hurtley, F. Knowles,
J. W. Lewthwaite, F. Ridgway, E. Thomas, E. Watkins

Club Doctor : Dr. JOHN OLIVER

Secretary : Mr. H. SUMMERSCALES

Pavilion Telephone No. : MAIn 4865

**Always
a winning
team**

GRIFF JENKINS

Oldham Rugby League Club
coach

JIMMY BREEN

The leading Rugby League writer

They will keep you up-to-date with all the
Rugby League news and gossip

IN THE OLDHAM EDITION OF THE
MANCHESTER EVENING CHRONICLE

No. 3—September 7th, 1955

Kick-off 6-30 p.m.

OLDHAM v. LEIGH

WATERSHEDDINGS NEWS AND VIEWS

It is obvious that we are not keeping up our reputation of last season, for so far this season we have had unexpected defeats from the two matches played, defeats that have set us wondering. In both matches the team has played indifferently when they were expected to perform brilliantly, the same team showed great form last season and may we say poor form this season—so far. These variations puzzle one. How are they to be explained and avoided? Naturally, the team we are associated with, we desire to win, but one must accept defeat and acknowledgment of the skill of our victors, there is bound to be some measure of bitterness in our disappointment if defeat is due to bad play. So we ask not so much as to how defeat is to be avoided, as how are to avoid bad play?—the sting is not in the defeat itself. We are not concerned that the team should lose a match, but we are greatly concerned if they play poor football. And so we try to find the explanation for these two unexpected defeats, this surprising fall to badness, from brilliance to blundering. To avoid these disconcerting variations from greatness to mediocrity we must seek the causes and remedy them quickly. It must be stated that our players have trained hard and well, and been enthusiastic about it. One cannot say they have been overtrained—staleness is the worst thing that can happen to an athlete. It means that he is overdrawn at the bank of vitality, his reserves of physical energy are temporary exhausted, neither the mind or the limbs will respond to the demands of the game, and what is a joy when a man is perfectly fit becomes a weariness and a burden. There is no doubt that we have been badly hit by injuries to players and this must be a contributing factor to the form of the team as a whole. However, we hope to have a clean bill of health shortly and then we can march on the road to success. We realise that our commencement to this season is a disappointment, but time alone will prove that our unhappy start is a false one.

OUR VISITORS

It is a pleasure that we have as opponents in the second round of the Lancashire Cup at Watersheddings this evening such attractive visitors as Leigh, and we extend a special welcome to them. We are sure of a game worthy of the name of Rugby League.

One cannot forget the splendid exhibition given by both teams on our ground on April 16th last, when the match ended in a draw of fifteen points each, a draw which robbed us of the title to become Lancashire Champions. However, that is past history, and if we get a game similar to April 16th we shall have no complaints, especially if we are the victors.

Our team will have to be on its best form to overcome this go ahead team from Leigh, but we have confidence in our team to enter the next round.

Telephone: BLA 6985

H. C. COOKE

(SPORTS) LTD.

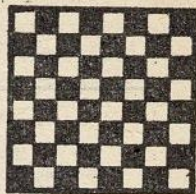
26 JOHN DALTON ST., and
68 CORPORATION ST., MANCHESTER

LEADING SPORTS OUTFITTERS TO THE R.L.
RUGBY JERSEYS at last season's prices from 16/6
STOCKINGS in hooped designs from 4/11 per pair
R.L. PATTERN SHORTS from 11/6 per pair

All sizes of Cotton Oxford and
Elmer Cotton Rugby Boots in stock

COOKE'S of MANCHESTER
Suppliers of the 1955 Finalists' complete Kit

THERE'S A
WILSON'S ALE
TO SUIT
EVERY TASTE



THE SIGN OF
QUALITY



WILSON'S BREWERY LTD. - MANCHESTER 10

G. Barlow & Sons

LIMITED

Saloon Coaches for away matches,
Land Cruises and Pleasure Trips,
Weddings and Tours arranged,
also Complete Funeral Furnishers

PERSONAL ATTENTION TO ALL ORDERS

Telephone: MAIn 4301

UNION STREET WEST GARAGE,
OLDHAM

Tom Shaw & Son

(Oldham) Limited

Luxury Coaches for all occasions
Operators of 'Pleasureways Tours'

151 UNION STREET, OLDHAM
Telephone: MAIn 5033/4

THIS SPACE TO LET

apply to

The Secretary,
Oldham Football Club,
Watersheddings,
Oldham

THE OLDHAM TEAM WEAR LITESOME

SUPPORTERS AND SPORTSWEAR

From all good Sports Outfitters

Sole Manufacturers:

FRED HURTLEY AND SON LIMITED
Department 60 Keighley, Yorks.

INSIST ON THE GREEN FINAL

A
L
L
T
H
E
R
E
S
U
L
T
S

OLDHAM

(Blue and White)

- 1—Stirrup, F.
- 2—Cracknell, R.
- 3—Noon, J./Barrow, R.
- 4—Davies, A.
- 5—O'Grady, T.
- 6—Daley, F.
- 7—Pitchford, F.
- 8—Ogden, H.
- 9—Keith, J.
- 10—Little, S. D./Goldswain, B. V.
- 11—Winslade, C.
- 12—Rodgers, J.
- 13—Turner, D.

LEIGH

(Red and White)

- 1—Ledgard, J. A.
- 2—Kindon, W.
- 3—Gullick, T. D.
- 4—Moore, A.
- 5—Davies, M.
- 6—Baxter, K.
- 7—Chadwick, B.
- 8—Robinson, W.
- 9—Tabern, W.
- 10—Owen, S.
- 11—Crook, J.
- 12—Martyn, M.
- 13—Foster, P.

Referee: Mr. R. Gelder, Wakefield

Touch Judges:

Mr. E. Lawrenson, Warrington (Red). Mr. J. Manley, Warrington (Blue)

OLDHAM'S OWN SPORTS PAPER

A
L
L
T
H
E
R
E
S
U
L
T
S

For...

REPAIRS & RENOVATIONS

Telephone: MAIn 4210

Frank L. Ridgway

PLUMBING
CONTRACTOR

53 HENSHAW ST. - OLDHAM
3 TOMMYFIELD - OLDHAM

REGENT HOTEL

Proprietor: James S. Parkinson

Make the REGENT the rendezvous for
First-class Entertainment

MARKET PLACE and Corner of
MANCHESTER STREET, OLDHAM

Telephone: MAIn 3527

F. Knowles & Co. Ltd.

TEXTILE MACHINISTS

Dealers in all classes of Opening, Card Room,
Spinning, Winding and Doubling Machinery
Textile Machinery Bought and Sold on
Commission

GLODWICK ROAD, OLDHAM
COMMERCIAL WORKS
Telephone: MAIn 3797

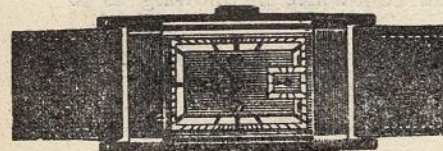
Royal Exchange Tuesday and Friday, Pillar J2

ANYWHERE
ANYHOW
ANYTIME



BY LAND, SEA, OR AIR
For your next holiday, day
outing, or journey of any
kind, consult...

STANTON—Travel Agency
112 UNION STREET, OLDHAM



You can depend on a watch
bought at

JOSEPH **HOWELL** & SONS
THE JEWELLERS DOWN MUMPS

8-10 MUMPS, OLDHAM. Tel.: MAI 4802

THIS SPACE TO LET

apply to

The Secretary,
Oldham Football Club,
Watersheddings,
Oldham

The following is the draw for the second round:—

Tues., 6th September—Rochdale Hornets v. Warrington.
Wed., 7th September—Oldham v. Leigh.
Thur., 8th September—Widnes v. Oldham.
Thur., 8th September—Barrow v. Workington.

UNWRITTEN RULES

At a pre-season meeting of the N.R.F.L. Management Committee, to which meeting invitations had been issued to all referees and coaches, the following instructions were issued, and we print these for the benefit of our members and supporters.

“That the advantage law must be applied, but not at the expense of the rules.

The new “play-the-ball” rule, referees must insist on it being carried out correctly.

The ball must be dropped in front of the tackled player, not placed down or rolled. Players must not place hands on the tackled player when he is playing the ball.

If a player dives on the ball behind the player playing the ball, this is a voluntary tackle and he must be penalised.

When a half-back receives the ball, the forwards must form a scrum and pushing will be allowed immediately.

Both touch judges are to go behind the goal posts for all kicks at goal, and if they disagree then the referee must give the decision.

The referee must inform the captains of any extra time to be played because of stoppages.

Players holding the ball away from the side awarded a penalty must be cautioned and if persisting in this, dismissed from the field of play.

Referees must watch for the players who do the nasty work, such as placing hands on the face of a tackled player.

Trainers must be dressed smartly.”

BRIEFS

We wish to remind all members and supporters that it is our privilege to stage the Lancashire v. Yorkshire County match on our ground on Monday, 26th September, 1955.

It is a long time since we had this honour and we hope to have a “gate” to encourage the Lancashire County for their confidence in allowing us to stage the match.

The match will take place in the evening and the time of the kick-off will be announced later.

NEXT HOME MATCH—

OLDHAM v. WARRINGTON

SATURDAY, SEPTEMBER 17th, 1955

KICK-OFF 3-0 p.m.

Keep dry with . . .

“STONE-DRI”

(Registered)

WEATHERWEAR

Branches at WAKEFIELD, ROCHDALE,
ASHTON, BRADFORD, LEIGH, Etc.

Direct Raincoat Co.

102, YORKSHIRE ST., OLDHAM

SHOP & OFFICE FITTER — POLISHING

WALTER MILLS

(Proprietor: A. Mills)

Joiner, Cabinet Maker, Etc.

Repairs and Alterations a Speciality

5 GARFITT STREET, OLDHAM
off ROCK STREET

Terms: MONTHLY — Phone: MAIn 3574

R. Boardman & Co.

ALE & STOUT BOTTLERS
Mineral Water Manufacturers

Try our . . .

“SPECIAL” GRAPE FRUIT CRUSH
Obtainable in the Pavilion

ASHTON - U - LYNE

Telephone: ASHton 2310

GREENWOODS

BUILDING

INDUSTRIES LTD.

for

- * STORAGE
- * CASEMAKERS
- * PACKERS EXPORT, TROPICAL AND HOME TRADE
- * SHIPPERS
- * HAULAGE CONTRACTORS

SALEM WORKS - LEES ROAD - OLDHAM

Telephone: MAIn 5436 (4 lines)