

Telephone : MAIn 2972

Haigh's Marine Stores Limited

Registered Office : 21 CROSS STREET, OLDHAM

IRON AND STEEL MERCHANTS

Bulk Buyers of

MIXED RAGS, SCRAP LEAD, COPPER, BRASS, COPPER WIRE, Etc.

DRAWING ROPES, STRING, HEMP, TWINE,
COTTON, ROLLER CLOTH, CLEARER CLOTH,
PAPER, TYRES, TUBES

All goods collected

Terms : CASH

Distance no object

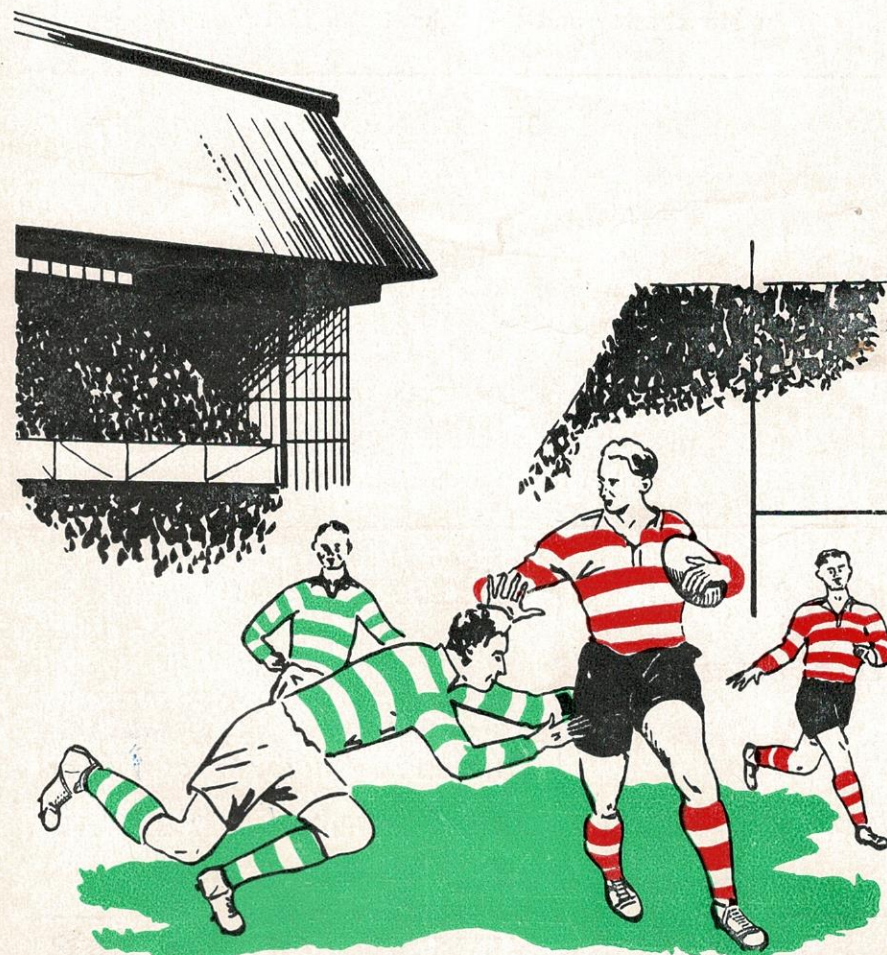
CROFTBANK MILL - - OLDHAM

Fixtures for the Season

1955-56	Opponent	Venue	K.O.	1955-56	Opponents	Venue	K.O.
Aug. 13—Rochdale H. (Charity)	Away	3-0		26—Swinton (Mon.)	Home	2-30	
20—Broughton R.	Away	3-0		27—Blackpool (Tues.)	Away	2-30	
27—Blackpool (Lancs. Cup)	Away	3-0		31—Whitehaven	Home	2-30	
30—Rochdale H. (Tues.)	Away	7-0		Jan. 2—Workington (Mon.)	Away	2-30	
Sept. 3—Hunslet	Home	3-0		7—Whitehaven	Away	2-30	
10—Leeds	Away	3-0		14—Workington	Home	2-30	
17—Warrington	Home	3-0		21—Widnes	Away	2-30	
24—York	Away	3-0		28—Rochdale H.	Home	3-0	
Oct. 1—Featherstone	Home	3-0		Feb. 4—Leigh	Home	3-0	
8—Hunslet	Away	3-0		11—1st Round C.C.		3-0	
15—Barrow	Home	3-0		18—Wigan	Home	3-0	
22—Warrington	Away	3-0		25—Featherstone	Away	3-0	
29—New Zea'and	Home	3-0		Mar. 3—2nd Round C.C. Leeds		3-0	
Nov. 5—Leigh	Away	3-0		10—York	Home	3-0	
12—Liverpool	Home	3-0		17—Blackpool	Home	3-0	
19—Wigan	Away	2-30		24—3rd Round C.C.		3-0	
26—Widnes	Home	2-30		30—Swinton (G.F.)	Away	3-0	
Dec. 3—Liverpool	Away	2-30		31—Leeds (E.S.)	Home	3-0	
10—Salford	Away	2-30		Apr. 2—Barrow (E.M.)	Away	3-0	
17—Salford	Home	2-30		7—Broughton R.	Home	3-0	
24—St. Helens	Away	2-30		14—St. Helens	Home	3-0	

Designed and Printed by T. Crabtree, Neild Street, Oldham

OLDHAM FOOTBALL CLUB



PROGRAMME...THREEPENCE

... For good food

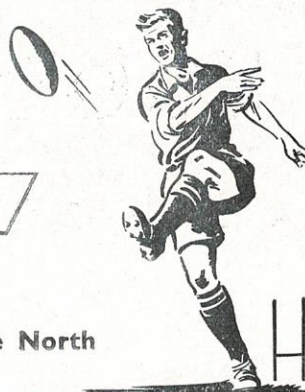


Shops & Restaurants

You'll do better at a U.C.P. Restaurant
in fact **"A WINNER EVERY TIME"**

19 HIGH STREET, OLDHAM

And many Shops and Restaurants
in Manchester and throughout the North



OFFICIALS

President : W. HOWARD, M.B.E., J.P.

Vice-President : J. COULTHARD, Esq.

Hon. Treasurer : A. CORDWELL, Esq.

Committee :

Messrs. F. W. Ashworth, A. F. Campbell, F. S. Holt, T. Hurtle, F. Knowles,
J. W. Lewthwaite, F. Ridgway, E. Thomas, E. Watkins

Club Doctor : Dr. JOHN OLIVER

Secretary : Mr. H. SUMMERSCALES

Pavilion Telephone No. : MAIn 4865

**Always
a winning
team**

GRIFF JENKINS

Oldham Rugby League Club
coach

JIMMY BREEN

The leading Rugby League writer

**They will keep you up-to-date with all the
Rugby League news and gossip**

— IN THE OLDHAM EDITION OF THE —
MANCHESTER EVENING CHRONICLE

No. 10—Monday, December 26th, 1955

Kick-off 2-30 p.m.

OLDHAM v. SWINTON

To all our readers, supporters, players, and friends beyond the seas, we extend
the old wish

"THE COMPLIMENTS OF THE SEASON"

WATERSHEDDINGS NEWS AND VIEWS

As the Festive Season comes along each year, so do Swinton come to Watersheddings—old friends, but yet old foes—and to-day we extend the Season's Greetings to them.

The arrangement between the two clubs for holiday fixtures has been of long standing. Many are the great battles and great crowds have watched the teams play at these holiday matches.

To the Swinton Club we gave the honour of opening this ground on September 28th, 1889 (Official opening). The attendance was 7,000, and Swinton won the game by 2 goals, 1 try, and 2 minor points to Oldham's 1 minor point. This match was played under Rugby Union rules.

We hope that to-day's game will be played with the usual keenness and that at the end of the game we can all say we have enjoyed ourselves. We hope that our team will be the victors, but no doubt the Swinton team will have some say in this matter.

THE FUTURE

The coming of 1956 finds us in the second half of the season and with some hard matches at home and away.

Our position in the League table at present is not a bad one, but we cannot afford to make many more slips, otherwise our chances of finishing in the first four will disappear. It is up to our team to display the form we know they are capable of, and we must steer clear of injuries. We are confident that our team will make that little extra effort to be in at the play-off for the championship.

We still have some very attractive matches at Watersheddings in: Workington, Rochdale, Leigh, Wigan, York, Blackpool, Leeds and St. Helens, with away matches at Whitehaven, Workington, Widnes, Featherstone, Swinton and Barrow. These matches all come in the second half of the season—eight matches at home and six matches away. Of course we have the Challenge Cup Competition commencing in February, when we hope it will be our Wembley year.

A COMPLIMENT

Below we publish a most complimentary letter which has been published in the well-known "Rugby Leaguer."

Praise from R.U.

Dear Sir,

Upon visiting friends in Wigan, I decided to pay my first visit to Central Park.

As a Rugby Union man, my only connections with the Rugby League game consisted of two matches at Wembley, both of which have not exactly inspired me!

Telephone: BLA 6985

H. C. COOKE

(SPORTS) LTD.

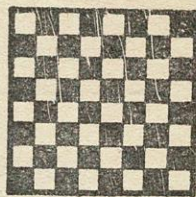
26 JOHN DALTON ST., and
68 CORPORATION ST., MANCHESTER

LEADING SPORTS OUTFITTERS TO THE R.L.
RUGBY JERSEYS at last season's prices from 16/6
STOCKINGS in hooped designs from 4/11 per pair
R.L. PATTERN SHORTS from 11/6 per pair

All sizes of Cotton Oxford and
Elmer Cotton Rugby Boots in stock

COOKE'S of MANCHESTER
Suppliers of the 1955 Finalists' complete Kit

THERE'S A
WILSON'S ALE
TO SUIT
EVERY TASTE



★
**THE SIGN OF
QUALITY**

WILSON'S BREWERY LTD. - MANCHESTER 10

G. Barlow & Sons

LIMITED

Saloon Coaches for away matches,
Land Cruises and Pleasure Trips,
Weddings and Tours arranged,
also Complete Funeral Furnishers

PERSONAL ATTENTION TO ALL ORDERS

Telephone: MAIn 4301

UNION STREET WEST GARAGE,
OLDHAM

PLEASUREWAYS

(1955) LTD.

Luxury coaches on all occasions

May we quote for your Private Parties

On receipt of P.C. our Personal
representative will call on you

151 UNION STREET, OLDHAM

Telephone: MAIn 5033/4

THIS SPACE TO LET

apply to

The Secretary,

Oldham Football Club,

Watersheddings,

Oldham

THE OLDHAM TEAM WEAR

LITESOME

SUPPORTERS AND SPORTSWEAR

From all good Sports Outfitters

Sole Manufacturers:

FRED HURTLEY AND SON LIMITED
Department 60 Keighley, Yorks.

INSIST ON THE GREEN FINAL

A
L
L
T
H
E
R
E
S
U
L
T
S

OLDHAM

(Red and White)

- 1—STIRRUP, F.
- 2—CRACKNELL, R.
- 3—NOON, J.
- 4—DAVIES, A.
- 5—ETTY, J.
- 6—DALEY, F.
- 7—PITCHFORD, F.
- 8—OGDEN, H.
- 9—KEITH, J.
- 10—LITTLE, S.
- 11—ROGERS, J.
- 12—GOLDSWAIN, B. V.
- 13—TURNER, D.

SWINTON

(Blue)

- 1—TOBIN, J.
- 2—HARDMAN, G.
- 3—EASTERBROOK, A.
- 4—MORGAN, H.
- 5—BERRY, C.
- 6—PARKINSON, G.
- 7—CARTWRIGHT, A.
- 8—WOODS, L.
- 9—OSMOND, F.
- 10—BILLINGTON, E.
- 11—NORBURN, P.
- 12—HOLDER, T.
- 13—HAYNES, G.

Referee: Mr. H. Squires, Ossett

Touch Judges:

Mr. A. Kemp, Warrington (Red).

Mr. H. Holland, St. Helens (Blue).

OLDHAM'S OWN SPORTS PAPER

A
L
L
T
H
E
R
E
S
U
L
T
S

For ...

REPAIRS & RENOVATIONS

Telephone: MAIn 4210

Frank L. Ridgway
PLUMBING
CONTRACTOR

53 HENSHAW ST. - OLDHAM
3 TOMMYFIELD - OLDHAM

REGENT HOTEL

Proprietor: James S. Parkinson

Make the REGENT the rendezvous for
First-class Entertainment

MARKET PLACE and Corner of
MANCHESTER STREET, OLDHAM

Telephone: MAIn 3527

F. Knowles & Co. Ltd.

TEXTILE MACHINISTS

Dealers in all classes of Opening, Card Room,
Spinning, Winding and Doubling Machinery

Textile Machinery Bought and Sold on
Commission

GLADWICK ROAD, OLDHAM
COMMERCIAL WORKS

Telephone: MAIn 3797

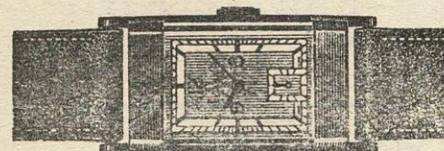
Royal Exchange Tuesday and Friday, Pillar J2

ANYWHERE
ANYHOW
ANYTIME



BY LAND, SEA, OR AIR
For your next holiday, day
outing, or journey of any
kind, consult ...

STANTON—Travel Agency
112 UNION STREET, OLDHAM



You can depend on a watch
bought at

JOSEPH **HOWELL** & SONS

THE JEWELLERS DOWN MUMPS

8-10 MUMPS, OLDHAM. Tel.: MAI 4802

THIS SPACE TO LET

apply to

The Secretary,

Oldham Football Club,

Watersheddings,

Oldham

I must however admit, that the Oldham team are just about the finest Rugby team (of either code) that I have ever seen! My goodness! I've never seen a finer display of rugby in my life, I now realise what my Northern friends mean when they say that League is more spectacular than Union. If all games were like that, I would be inclined to agree! I suggest that the Rugby League ought to pick their televised matches more carefully — the Oldham v. Wigan match would have been ideal for showing as an example of how Rugby should be played. I cannot, however, understand the concern felt about the play-the-ball rule, there was nothing wrong with it at Wigan.

Finally, if there is a better scrum-half or centre playing than Oldham's No. 7 and No. 4 (sorry, I don't remember their names), I'd certainly like to see them. If Oldham are at Wembley this season, it would be the finest-ever advert. for Rugby League. I for one, am looking forward to seeing them again.—“E.S.W.” Harlow.

With acknowledgment to “The Rugby Leaguer.” Published each Wednesday, price 3d.

CHRISTMAS DRAW

May we thank our many members who have helped to make our Christmas Draw such a huge success, and also the many tradespeople who have contributed prizes for this effort, a truly magnificent response.

The final accounts are being prepared and the amount available to the Ground Reconstruction Fund will benefit to the extent of well over £400.

A list of contributors to our prize list is published below.

With renewed thanks to all for such a splendid effort.

Donations by—

Raincoat by Jackson's The Tailors
Turkey by J. Greenwood, Esq.
£20 Cash by J. Greenwood, Esq.
Shoulder of Lamb by T. Dunkerley, Esq.
Piece of Beef by T. Dunkerley, Esq.
2 Dozen Bass by Boardman's
2 Dozen Guinness by Boardman's
Christmas Pie by Mrs. Brierly
£5 Voucher by Phil Cohen and Son Ltd.
1 Gallon of Paint by Cartwright's
Special Prize by Schofield's Ltd.
Bottle of Whisky by Wilson's Brewery Ltd.
Bottle of Whisky by Oldham Brewery Ltd.
Electric Clock by Ferranti Ltd.
Basket of Fruit by S. Butters, Esq.
Bottle of Gin by Oldham Football Club
Complimentary Ticket by Oldham Football Club
Bottle of Whisky by W. D. Crabtree, Esq.

FORTHCOMING MATCHES AT WATERSHEDDINGS

Tuesday, December 27th. Kick-off 2-30 p.m.

OLDHAM “A” v. BLACKPOOL “A”

Saturday, December 31st Kick-off 2-30 p.m.

OLDHAM v. WHITEHAVEN

Keep dry with . . .

“STONE-DRI”

(Registered)

WEATHERWEAR

Branches at WAKEFIELD, ROCHDALE,
ASHTON, BRADFORD, LEIGH, Etc.

Direct Raincoat Co.

102, YORKSHIRE ST., OLDHAM

SHOP & OFFICE FITTER — POLISHING

WALTER MILLS

(Proprietor: A. Mills)

Joiner, Cabinet Maker, Etc.

Repairs and Alterations a Speciality

5 GARFITT STREET, OLDHAM
off ROCK STREET

Terms: MONTHLY — Phone: MAIn 3574

R. Boardman

& Co.

ALE & STOUT BOTTLERS

Mineral Water Manufacturers

Try our . . .

“SPECIAL” GRAPE FRUIT CRUSH

Obtainable in the Pavilion

ASHTON - U - LYNE

Telephone: ASHton 2310

GREENWOODS

BUILDING

INDUSTRIES LTD.

for

- * STORAGE
- * CASEMAKERS
- * PACKERS EXPORT, TROPICAL AND HOME TRADE
- * SHIPPERS
- * HAULAGE CONTRACTORS

SALEM WORKS - LEES ROAD - OLDHAM

Telephone: MAIn 5436 (4 lines)