

Whenever you change . . .

CHANGE FOR THE BETTER TO

LITESOME
Sportswear



'BEST IN THE FIELD'
— for all Sports

The 'LITESOME' range of Finest Quality Sports Clothing includes :

- ★ TERYLENE FOOTBALL STOCKINGS
- ★ RUGBY JERSEYS, SHIRTS & SHORTS
- ★ TRACKSUITS & WINDCHEATERS

Also Football Shirts and Shorts, Running Vests, "Grand Slam" Cushion Foot Socks, Swimwear, Beachwear, Hockey Shirts and Shorts, Tony and Joy Mottram Tennis Clothing, Len Hutton Cricket Clothing, Elastic Goods, etc., and the famous "Litesome" Supporters (available in all waist sizes). Obtainable from all good Sports Shops and Outfitters

ASK FOR 'LITESOME' BY NAME



Sole Manufacturers :

Fred Hurtley & Son Ltd., Dept. 202, Keighley, Yorks.

Printed by George Todd and Son, Strand St., Whitehaven.

Whitehaven Rugby League Football Club Ltd.



RECREATION GROUND,
WHITEHAVEN. Phone 915.

Registered Office :—9a, Coates Lane,
Whitehaven. Phone 230.

Chairman :—Mr. H. GIBSON.

Vice-Chairman :—Mr. J. L. LOWES.

Directors :—Messrs. H. Carling,
H. B. Gibson, R. Nicholson,
H. Pickthall.

Ass. Members—T. Murray, W. R. Roe,
J. McKitten, W. G. Brown.

Secretary :—R. WATSON.

Player-Coach :—E. GIBSON.

PROGRAMMES 3D.

LANCASHIRE CUP—1st ROUND

Whitehaven v. Oldham 5

SATURDAY, AUGUST 29th, 1959.

KICK-OFF 3 p.m.

KEEP THIS :—

It may win you two stand tickets
for the next home match.
(Claim at Secretary's Office).

No 1906

!! BREWED TO PLEASE YOU !! FISH & CHIP RESTAURANT

Lion Ales

LION BREWERY
BLACKBURN AND
CLEATOR MOOR



J. Peeney

and Sons

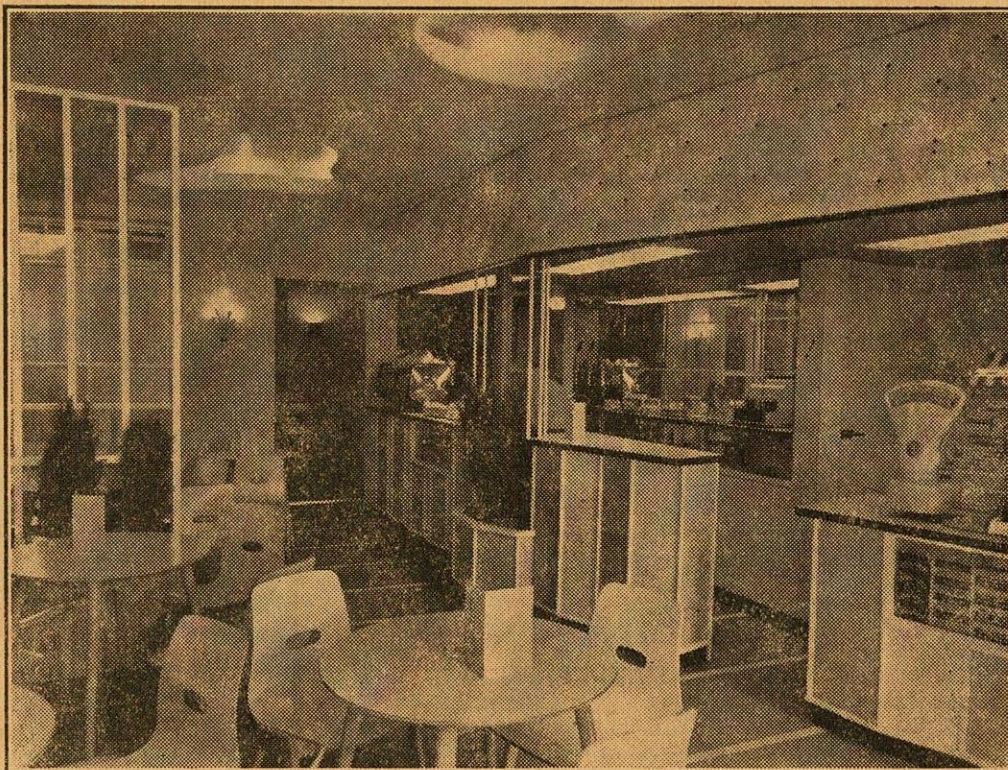
**50, MARKET PLACE
WHITEHAVEN**

Telephone 296

AMPLE SEATING ACCOMMODATION

When in Blackpool visit

30, ADELAIDE STREET



“FONDANT”

20, Tangier St., Whitehaven

BEST IN THE WEST “ESPRESSO COFFEE BAR”

London's Speciality now in Whitehaven

Espresso Coffee, Individually Brewed Teas Snacks include :— Delicious Cornish Pasties, Soups, etc. — Complete range of Soft Drinks and Milk Shakes

!!! SERVICE A PLEASURE !!!

CLEATOR MOOR CO-OPERATIVE SOCIETY
LIMITED.

Get the Habit !

SUPPORT
THE **CO-OP**

And INCREASE Your Savings.

We can supply all your requirements

PARTINGTON'S

The Premier Meat and
Pork Purveyors

PARTINGTON'S
PERFECTION
RODUCTS

Obtainable only at

67, KING STREET, WHITEHAVEN

NOTES AND COMMENTS

The team scored a grand victory over Workington on Wednesday and while the rugby served up was not exactly vintage stuff, there was no doubt of their superiority. It was unfortunate that Fred Hodgson had to be carried off but it was good news to learn later that it had not been necessary to keep him in hospital as his injury was not serious. This win will have given our lads a boost which should stand them in good stead to-day.

And so we extend a welcome to our friends from Oldham who once again are our opponents in the first round of the Lancs. Cup. Last year we met them at Watershedding's where they inflicted a severe defeat on us. Is it too much to hope that the position will be reversed to-day? The game has added interest in that Geoff. Robinson is included in the Oldham ranks, providing his broken nose does not keep him out.

We know that our supporters have been expecting some signings to help augment the team, and this week the directors have been out and about in an attempt to attract new blood. It is early to say anything yet but it is hoped that in the near future it will be possible to announce that we have met with some success.

WHITEHAVEN FIXTURES 1959-60.

N.R.F. LEAGUE.

1959.

August.	For A'st
15—Hudd'field	H 17 9
19—Salford	A 14 23
22—York	A 23 37
26 Workington	H 20 4
29—Oldham(LC)	H

September.

5—Feath'stone	A
12—Bradford N.	H
19—Hull K. R.	H
26—Hudd'rsfield	A

October.

3—Blackpool	H
10—Wigan	A
17—St. Helens	H
24—Rochdale	A
31—York	H

November.

7—Warrington	A
14—Salford	H
21—Oldham	H
28—Widnes	A

December.

5—Liverpool	H
12—Blackpool	A
19—Warrington	H
26—Swinton	A

January—1960.

1—Workington	A
2—Hull K. R.	A
9—Feath'stone	H
16—Wigan	H
23—Dewsbury	A
30—Barrow	A

February.

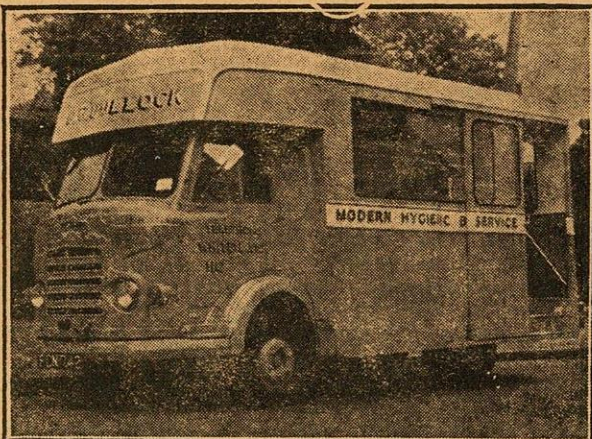
6—Swinton	H
13—1st Round Chal. Cup	
20—Leigh	A
27—2nd Round Chal. Cup	

March.

5—Leigh	H
12—Widnes	H
19—Liverpool	A
26—St. Helens	A

April.

2—Barrow	H
15—Dewsbury	H
18—Oldham	A
23—Bradford	A
30—Rochdale	H



D. G. Bullock

High-Class Beef, Pork &
Lamb Butcher

Home Cured Ham,
Bacon, Cooked Meats &c

Continental Foods and
Bread a speciality

Home Fed Poultry

48-49 ROPER ST.,
WHITEHAVEN

Tel. 11

H. & I. Moffat

for

LATEST LUXURY COACHES

Queen's Arms Hotel
Cleator Moor

— TELEPHONE 372 —

Your Enquiries Solicited

WILLIAM FARE

M. P. S.

FAMILY CHEMIST

PHOTOGRAPHIC

TOILET

SURGICAL REQUISITES

11, MARKET PLACE,
WHITEHAVEN. Tel. 978.

WEST CUMBERLAND SILK MILLS Ltd.

HENSINGHAM

::

WHITEHAVEN

*We manufacture high-class Silk and Rayon Materials for
Export to all parts of the World. We can find good employment
for your Daughter or Sister. Ask to see our Personnel and
Welfare Officer.*

'Phone 289

Est. 1888

SKINNERS

For Wallpapers & Paints

*All the Best Brands of Gloss Paints, Jelly Paints and Emulsion
Paints in Stock. Everything for Do-it-Yourself Home Decorating*

61-62, ROPER STREET, WHITEHAVEN.

Cash's Caterers

Proprietors : L. & J. Little



Waverley House
FRIZINGTON

Tel. Cleator Moor 478

Mobile

Catering Service

WEDDINGS
FUNERALS
SUPPER-BUFFETS
DANCES
AGRICULTURAL SHOWS
FARM SALES
SPORTS

MARCHON
PRODUCTS
LIMITED

Chemical
Manufacturers



Whitehaven

Telephone Whitehaven 3131

TV
murphy

H. L. ELLIOTT

YOUR *murphy* DEALER

29 LOWTHER STREET,
WHITEHAVEN.

KEIR'S

YOUR LOCAL DEALERS FOR—

FORD, MORRIS AND RILEY
AND THAMES COMMERCIAL VEHICLES

Tel. 45 and 656 (2 lines).

Aikbank Garage, Whitehaven

Phone : Cockermouth 3243.

JENNINGS Bros.

Castle Brewery, Cockermouth

TRY OUR NOTED OLD BROWN ALE AND CASTLE PALE
ALE IN BOTTLE

Thomas W. Dixon

(Prop.: N. K. THOMSEN)

TRAWLER OWNER

Whitehaven — and — *Workington*

TELEPHONE 57/8.

TELEPHONE 1058.

Drink

CARTMELL'S

SOFT

DRINKS



J. CARTMELL & Co.,

CATHERINE ST.

Tel. 398.

SATURDAY, AUGUST 29th, 1959.

23 **WHITEHAVEN v. OLDHAM** 5

1—FORSTER or
COLES

2—SMITH

3—HUGHES

4—GIBSON

5—STEPHENSON

6—HADLEY

7—REID

8—McALONE

9—LYNCH

10—VINCENT

11—TEMBEY

12—BAINBRIDGE
or BURNS

14—MORGAN

Fullback

Right Wing

Right Centre

Left Centre

Left Wing

Stand-Off Half

Scrum Half

Prop Forward

Hooker

Front Row Forward

Second Row Forward

Second Row Forward

Loose Forward

1—GANLEY

2—NESTOR

3—DAVIES

4—NOON

5—SIMS

6—KELLETT

7—A. N. OTHER

8—JACKSON

9—McINTYRE

10—GODDARD

11—WINSLADE

12—DUFTY

13—ROBINSON

Referee : Mr. M. COATES, Leeds.

Touch Judges : Messrs. G. BATTERSBY and D. SCOTT.

Phone 11

CLAYTON'S

for

QUALITY

CLAYTON'S

(CUMBERLAND) Ltd.

CHEMISTS AND

OPTICIANS

.....

KING STREET

WHITEHAVEN

J. A. PICKTHALL & SONS

Cleator Moor

FURNITURE REMOVALS BY EXPERTS

ESTIMATES FREE

DISTANCE NO OBJECT

TELEPHONE : CLEATOR MOOR 238.

FRUIT AND FLOWERS DELIVERED DAILY

ARMSTRONG'S

FRUITERER
& FLORIST

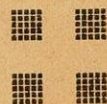
33, TANGIER STREET, WHITEHAVEN

BOUQUETS, WREATHS, SPRAYS—ARTISTICALLY MADE AT SHORT
NOTICE.

For all Your
PRINTING REQUIREMENTS

consult

**GEORGE TODD
AND SON**



**41-42 STRAND STREET
WHITEHAVEN**

Phone 397

CALLING ALL SPORTSMEN!

Make a Safe Bet with . . .

JOE DOUGLAS

COMMISSION AGENT

**ROPER STREET, WHITEHAVEN
LAKELAND AVE., WOODHOUSE**

**Tel. 811
Tel. 704**

GLOBE

Telephone Whitehaven 277

Residential
A.A. R.A.C.

HOTEL

Hot & Cold Water
Central Heating
Plugs fitted for Electric Shavers

LUNCHEONS, TEAS, DINNERS
WEDDING & PRIVATE PARTIES
CATERED FOR — LION ALES

WHITEHAVEN

TELEPHONE : CLEATOR MOOR 479

GORDON PURDY

**PARK HOUSE SERVICE STATION
BIGRIGG . . . CUMBERLAND**

Agents for—"ISETTA," "VESPER" and "BUTCH"

Radio & T.V. Stores

McMICHAEL



DECCA

**Common End
Distington**

G.E.C.

PILOT



REGENTONE

All the latest T.V. — Rent or Buy

MARCONI ETC.

SUPPORTERS' CLUB NOTES

After a win against Huddersfield we hoped to see an away win against York, and at half-time were delighted that our team was in the lead. The late start from Whitehaven however, probably left our team tired, and in the second half 30 points were scored against them. Against Workington we did better, beating them by the highest margin yet.

The match was marred by the accident to Hodgson and we wish him a speedy recovery.

Although we won, it is obvious to any judge of the game where the weaknesses in the team are and the sooner these are strengthened the better.

It is a well-known fact that for many years the Whitehaven Directors have had little money to go out and buy expensive players, this is no longer so.

Transfer fees for Robinson, Huddart, Lowdon, Donaldson and McGuinness to name some have brought in thousands of pounds.

The Supporters' Club have given substantial sums, and a steady income from the Auxiliary Association and Social Clubs have swelled the coffers. It is now time some of this money was spent on new players. In fact, must be spent if the diehard supporters are to continue to pay their entrance money at the gates.

Do not blame the team building committee who under the very able and forceful chairman Mr. H. Pickthall has spent an immense amount of time in trying to obtain players of the right calibre. Money, big money was not available, but now that should no longer apply, the coffers are full and the Board of Directors and the Supporters must, I repeat must, give the team building committee Carte Blanche when it is in a position to sign the right players.

This is the only way in which the men and women who week after week, like Mr. Micawber wait for something to turn up, and week after week are disappointed, what they want to see is a new player or two of proven ability and a team winning combination ready and able to go places.

Phone : Lamplugh 202 Grams : Boathouse, Lamplugh Station : Whitehaven

ANGLER'S HOTEL

ENNERDALE LAKE

LUNCHEONS AFTERNOON TEAS DINNER PARTIES
— OR WHY NOT STAY FOR A WEEK-END OR LONGER —

Established 1785

ROBERT & HENRY JEFFERSON

WINE AND SPIRIT MERCHANTS

27 LOWTHER STREET . WHITEHAVEN

Office Hours : 9 a.m.—5 p.m. Saturday 11-30 a.m.—3 p.m.
Telephone No. 54 Whitehaven

JEFFERSON'S FINE OLD SCOTCH WHISKY
JEFFERSON'S FINE OLD RUM
JEFFERSON'S SPECIAL PORT
JEFFERSON'S BROWN SHERRY

:: Proprietors of THE PUNCHEON INN, Chapel Street ::

After the Match, call and see the Best Shops in Cumberland for . .

MOTOR CYCLES, SCOOTERS AND CYCLES

ACCESSORIES, TOOLS, HARDWARE, ELECTRICAL AND TOYS.

Specialists down to the smallest detail. Main B.S.A. Spares Stockists.

MARK TAYLOR'S KING STREET, WHITEHAVEN
 OXFORD ST., WORKINGTON

Telephones : Whitehaven 252. Workington 1180.

BURNYEATS LTD.

SPORTS GOODS

TRAVEL REQUISITES

WATERPROOFS & WELLINGTONS

15, ROPER STREET, WHITEHAVEN

PHONE 128