

TOMMY MERRIMAN

(T. & T. MERRIMAN)

Est. 1923

COMMISSION AGENT

**33 Ann St. & 120 Moorfield Rd.
Widnes, Lanes.**



Member of
Liverpool and District Commission Agents' Association
The Northern B.P.A.
The National Sporting League



DAILY OR WEEKLY ACCOUNTS

Telephone:

2481 2482 2483 2484 2485
 2486 2487

Residence: WIDNES 5056; PENKETH 2431

Printed by Swale Press Limited

WIDNES

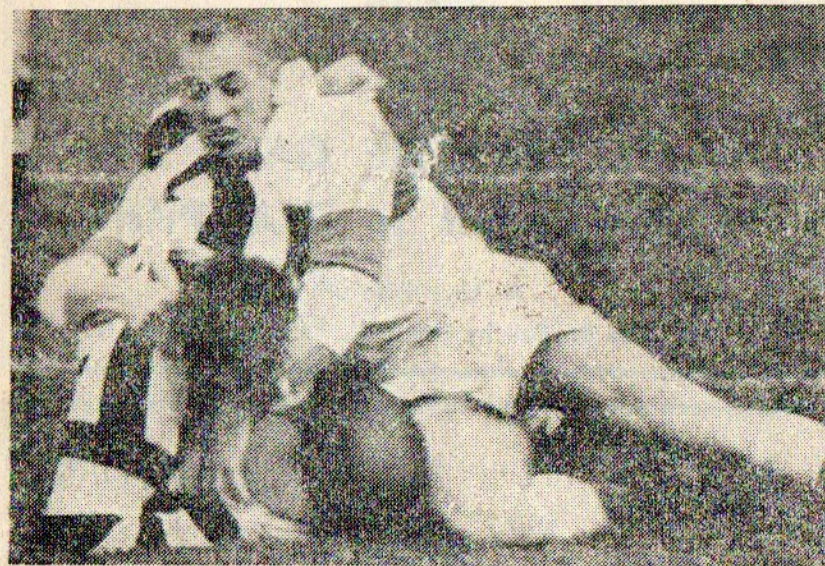
RUGBY FOOTBALL CLUB

OFFICIAL

PROGRAMME

NAUGHTON PARK

LOWERHOUSE LANE



WIDNES v. OLDHAM

SATURDAY, 2nd FEBRUARY, 1963. KICK-OFF 3-0 P.M.

PRICE THREEPENCE

No 2497

WIDNES FOOTBALL CLUB

NAUGHTON PARK

SEASON 1962-63 Tel: 2792

President: Alderman T. SWALE.
Mr. F. DEVONALD (Chairman)

Committee:

Mr. J. J. DAVIES
Mr. H. DITCHFIELD
Mr. A. FURBER

Mr. A. HIGGINS
Mr. A. MALONE

Mr. C. MOLYNEUX
Mr. A. REICHARDT
Mr. R. SHAW

Hon. Surgeon:
Dr. J. H. O'NEILL

Hon. Treasurer:
Mr. W. E. LYNN
8 Vine Street,
Widnes.

Tel. Widnes 3589

Hon. Secretary:
Mr. W. JOHNSON
21 Woodland Avenue,
Widnes.

Tel. Widnes 4435
Rugby League Council Representative: Mr. J. J. DAVIES
Lancashire County Representative: Mr. F. DEVONALD



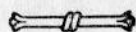
AFTER THE GAME
Call Yourself a CHAMPION

A Fine Pale Ale

Brewed and Bottled by Greenall, Whitley & Co. Ltd.

BUILDERS

DECORATORS



FRANK FARRELL & SON LTD.

Moor Lane

Widnes

TELEPHONE 3313

BATTLE AGAINST THE FROST

Would you believe it! The last R.L. game played at Naughton Park was way back in December—the 22nd to be exact—when Widnes beat Wigan by 14 pts. to two. We managed to get in that fixture when three other games in the first division and two in the second were called off. Today we are keeping our fingers crossed hoping that the pitch will be fit for play. Never in the history of the club has so much time, trouble and expense gone into making the playing area suitable for a game.

Before the war there was a celebrated occasion when we used scores of braziers to loosen the frost and ice, an idea which was copied by other clubs. We have used straw many times, but this is very expensive business. It requires extra insurance, laying and taking off the straw and then laying it again. But this week the officials have gone to more expense than ever in an effort to fulfill the fixture with Oldham, and we think that we may be one of the few clubs who are able to play this afternoon.

Following successful experiments on the turf near the touchline your officials decided to go ahead with the chemical treatment, an idea which comes from a local company. The chemical is said to be non-injurious to the grass and, any apparent rough treatment to the turf occurred during the massive ice removal operation. If the scheme works well, Widnes club will again have given a lead to the Rugby League. We felt that an all-out effort should be made this week, to give our players match practice and our supporters the chance to enjoy a Rugby League match again.

It may be that the club, in conjunction with the Bowmans Chemicals Ltd., of which Mr. Charles Appleton, the well-known referee is a long-serving employee, will have put an end to postponed games because of ice and frost. It must be remembered that this treatment is more of a preventative than a cure for frozen grounds. The manufacturers maintain that a ground treated before the heavy frost period, say mid-December, will give protection against these completely frozen grounds. We are extremely grateful for the interest taken by the management and staff of Messrs. Bowmans Chemicals Ltd., whose efforts, combined with the tremendous preparatory work put in by the Park Superintendents staff has made play possible today.

CHANGES IN PERSONNEL

There have been a number of changes in the Oldham personnel in the past 12 months. Their former Liverpool City player, and prop forward, Bill Payne, is now at Warrington, and the same remarks apply to Keith Holden, their centre-threequarter. Holden was part of a deal with Warrington and Oldham in which

DISCUSS THE GAME

at the

**Four Topped
Oak**

Mrs. Traynor proprietor

**HOUGH GREEN
WIDNES**

Phone Widnes 3004

THE MUSIC SHOP

Widnes Leading Record Shop

FOR ALL YOUR POPS, JAZZ

CLASSICAL, SINGLES, E.P.'s

L.P.'s

Also Greeting Cards, Stationery,
Toys, Games

VISIT US AFTER THE MATCH

Prop. R. C. HIRONS

134 Widnes Road

Phone Widnes 3355

*For Sports Prizes, Medals
Cups, Cutlery . . .*

EUSTANCE & Co. Ltd.

JEWELLERS GOLDSMITHS MEDALLISTS

41 - 43 SANKEY STREET, WARRINGTON

Telephone: Warrington 30386

Harry Major, the Wires forward, went to Watersheddings. Then Peter Goddard, the Watersheddings' forward, was transferred to St. Helens, and John Donovan, an inside back of distinct promise, went from St. Helens to Oldham.

And it will be some time before we see Malcolm Price, the Oldham centre, in action again. He suffered a nasty ankle injury on his last appearance here—and then this season he was hurt at Rochdale and was in hospital for a long spell. Their former scrum-half, Frank Pitchford, is now with Wigan, where he has teamed up with a former colleague, Alan Davies.

Oldham however, have a young and capable team which deserves a much better position in the first division of the league. Players like Peter Smethurst, Geoff Robinson, Johnny Noon, Vin Nestor, Alan Kellett, Patterson and Sims have done fine service for the club and young Bott is said to be a player with a big future. The game with Oldham always produces some excellent football and we hope that the same type of rugby will be seen today.

The R.L. Challenge Cup competition draw was not very kind to us and once again we face our old adversaries, Swinton. The Lions beat us by a narrow margin in this season's Lancashire Challenge Cup tournament, at Station Road, but it was a game where the result hung in the balance for some considerable time. There will be a big following for our team. Needless to say, stand tickets are available for this cup tie, and can be obtained after the game at the ticket office and each evening next week from 7 p.m. to 8-30 p.m.

We should warn supporters that there has been a good demand for tickets and those who have not yet made an application should do so to avoid disappointment. Yates Tours are also booking steadily for this game and here again the proprietors would be pleased if supporters who intend to see the cup tie, would make their arrangements as soon as possible.

**GREENALL'S ALES
AND STOUTS**

GRIFFIN HOTEL

J. G. Mercer, proprietor

**FARNWORTH ST.
WIDNES**

Phone Widnes 3542

Perfumery Cosmetics

M. & M. L. GRUNDY

M.P.S.

Simms Cross Pharmacy

142 WIDNES ROAD

WIDNES. Tel. 2618



The MACKESON RUGBY LEAGUE CONTEST

*Organised by Whitbread & Co. Ltd. in
association with The Rugby Football League*

Lower House Garage

MOOR LANE, WIDNES

Telephone: 2951

Your local Rootes Group Dealer
SALES · SERVICING REPAIRS

Open for Petrol 8 a.m. to 10 p.m.

FREE PARKING FOR FOOTBALL PATRONS

THE HOUSE of GREEN'S

Established in 1868

**BETTER BOTTLERS OF THE BEST BEERS AND STOUTS
HIGH-CLASS WINE AND SPIRIT MERCHANTS**

A Business pre-eminent in its particular field, having been
built on the genuine principles of Quality and Service

TRADE ENQUIRIES ALWAYS WELCOME

98 BRADSHAWGATE, LEIGH

Telephone LEIGH 73331/2/3

ALEX R. BROMILOW

WINE AND SPIRIT MERCHANTS

18b and 169 Albert Road, Widnes

Telephone Widnes 2963

FINEST PORTS, SHERRIES, LIQUEURS, Etc.
BOTTLED BEERS and CIDERS PROMPT DELIVERIES

"YOUR LOCAL WINE MERCHANT"

POINTS OF INTEREST

We meet Swinton on two occasions within a week. The first meeting is in the cup tie, and we are due at Station Road the following week in a league game. If we should get over the first round—our players are confident of success—then we may be drawn at home in round two. Otherwise, we will not have a home game until March 23rd. This is due to the upheaval caused by the unprecedented number of postponed games due to the abnormal weather.

We feel that not all our supporters are taking their chance to win a big prize in the Jack Pot Competition. The kiosks are open before the game and for one shilling you may win one of the big prizes. The licensed bar on the grandstand side is open for the whole of the afternoon, and all spectators over the age of 18 are entitled to enjoy the facilities. There are ample facilities for other refreshment elsewhere on the ground.

Our Cover Picture — Widnes v. St.Helens

The last time these two teams met was in the Western Championship semi-final and here Van Vollenhoven is too late to stop Jim Measures scoring in Widnes' 10-9 win.

If the pitch at Hilton Park is fit, then we will be playing a friendly game with Leigh on Tuesday night under floodlights. Supporters should watch the Press for announcements.

Our popular scrum half Ray Owen, has a knee injury which needs hospital treatment. He goes into a Warrington hospital on Sunday. We wish him a speedy and successful return to the game. Ray, out because of the hand injury he sustained before the Wakefield Trinity game, made a come-back against Liverpool City "A" team, but sustained a knock on the knee which has not yielded to treatment. Therefore an operation is necessary to put things right.

In and out of season we are at your service

CALVERTS

OF WIDNES

Shops for Men
WIDNES and RUNCORN

TO-DAY'S LINE-UP

Referee: Mr. L. Gant (Wakefield).
Touchjudges: Mr. W. Unsworth (Wigan) Pink Flag.
Mr. E. Roberts (Newton) Orange Flag.

WIDNES

OLDHAM

- | | |
|-----------------|--------------|
| 1. RANDALL | 1. NOON |
| 2. CHISNALL | 2. LORD |
| 3. LOWE | 3. FISHER |
| 4. THOMPSON | 4. DONOVAN |
| 5. GAYDON | 5. SIMMS |
| 6. MYLER | 6. KELLETT |
| 7. SMITH, G. 17 | 7. GASKELL |
| 8. HURSTFIELD | 8. MUMBERSON |
| 9. KEMEL | 9. McINTYRE |
| 10. BATE, E. | 10. ROBINSON |
| 11. WINSTANLEY | 11. BOTT |
| 12. MEASURES | 12. MAJOR |
| 13. KARALIUS | 13. PARKER |

Runcorn & Widnes Co-operative Society Ltd.

1862 : A Century of Service : 1962

Our record is consistent
Always at the Top
for
Service and Quality

S HOP
where you
AVE
as you
PEND

FULL DIVIDEND ON ALL PURCHASES

Yates' Tours

LIMITED

SALISBURY STREET GARAGE, WIDNES. Tel. 5083

EXCURSIONS TO ALL AWAY MATCHES

1st Round Rugby League Challenge Cup.

SWINTON, Saturday, Feb. 9th

Return Fare 5/3 Children 3/6

Buses leave Salisbury Street at 1 p.m.

FORTHCOMING ATTRACTION AT NAUGHTON PARK

WIDNES "A" v. SWINTON "A"

Saturday, February 16th

Kick-off 3-0 p.m.

WIDNES "A" v. BARROW "A"

Saturday, February 23rd.

Kick-off 3-0 p.m.

WIDNES "A" v. LEIGH "A"

Saturday, March 2nd.

Kick-off 2-0 p.m.

(Dependent on 2nd Round draw R.L.C.C.)

WIDNES v. HULL

Saturday, March 9th.

Kick-off 3-0 p.m.

SEXTON'S

Phone: WIDnes 2441

(3 lines)

*The
complete
house
furnishers*

FURNITURE : RADIO & TV
BEDDING : WASHERS
CARPETS : CLEANERS
FIREPLACES
PRAMS : TOYS : CYCLES

ALFORDE STREET

::

WIDNES

FOR EVERYTHING ELECTRICAL

Speeds

(WIDNES) LIMITED

Showrooms:

101 WIDNES ROAD (Phone 3234)

APPLETON VILLAGE (Phone 2471/3)

CLARRY BINGHAM

DEACON ROAD

Telephone 2849

MORRIS, WOLSELEY, M.G. and
VAUXHALL CARS. Also MORRIS
and COMMERCIAL VEHICLES

REPAIRS A SPECIALITY

GROSVENOR HOTEL

RESIDENTIAL

VICTORIA SQUARE

Widnes 5060

(J. Hartles, proprietor)

DAILY Luncheons (Mon. - Fri.)

Parties catered for

A Greenall Whitley house

H.Q. R.A. Association

H.Q. Rugby League Referees'
Society (Widnes)

A. J. ARCHER

Oldest established

TAXI SERVICE

in Widnes

8 WINDSOR ROAD, WIDNES

Telephone 3528

B. McDERMOTT, M.P.S.

Dispensing Chemist

COSMETICS, BABY GOODS

101a Hale Road, Widnes

Phone: Widnes 4001

FIRST TEAM SCORERS

	Goals	Tries	Points
R. Randall ..	75	2	156
W. Thompson ..	—	14	42
J. Measures ..	—	10	30
J. Bright ..	—	8	24
B. Chisnall ..	—	6	18
F. Myler ..	—	5	15
G. Lowe ..	—	4	12
A. Hughes ..	—	3	9
R. Owen ..	—	3	9
V. Karalius ..	—	3	9
D. Heyes ..	—	3	9
G. Kemel ..	—	2	6
A. Mort ..	—	2	6
E. Bate ..	—	1	3
R. Bate ..	—	1	3
W. Hurstfield ..	—	1	3
G. Smith ..	—	3	9
J. Gaydon ..	—	1	3

(Including A. & B. Motors Cup match.)

There's nothing half so good as
WALKER'S PALE ALE



Now available at the Bar

It's **SAFE**

It's **PASTEURISED**

It's **Hale's Milk**

Purchase Your Supplies from

W. A. HALE & SONS LTD.
IDEAL DAIRY

46 Widnes Road, Widnes

Phone 2531

DAILY DELIVERIES IN ALL DISTRICTS

GORDON HARRISON

SPORTS OUTFITTERS

Why not give us
a "TRY" for all
your Sports
requirements



48 WIDNES ROAD

Widnes Tel. 2786

Make the

Upton Tavern

Props: Leslie and Elsie Stannard

Upton Lane, Widnes

Phone: Widnes 3888

*your rendezvous
after the match*

FIXTURE LIST

FIRST TEAM					'A' TEAM				
Date	Opponents	Venue	Result F. A.		Date	Opponents	Venue	Result F. A.	
Aug. 11	Leigh (A & B Cup) (F)	H	24	7	Aug. 11	Leigh (Farrell Cup) (F)	A	9	12
	WESTERN CHAMPIONSHIP				" 18	Rochdale H.	H	34	5
" 18	Rochdale H.	A	22	5	" 25	Whitehaven	A	33	7
" 23	Liverpool C.	H	26	2	Sep. 1	Rochdale H.	A	34	14
" 25	Whitehaven	H	30	10	" 8	Swinton	H	12	5
" 30	Barrow	A	9	12	" 15	Liverpool C. (L.C.C.S.)	H	19	3
Sep. 1	Rochdale H.	H	19	7	" 22	Whitehaven (L.C.C.S.)	A	5	8
" 8	Swinton	A	2	5	" 29	Whitehaven	H	28	3
" 15	Liverpool C. (Lancs. Cup)	A	22	9	Oct. 6	Salford	H	33	8
" 22	Barrow	H	39	7	" 13	Warrington	A	3	15
" 29	Whitehaven	A	13	2	" 20	Wigan	H	8	5
	FIRST DIVISION				" 27				
Oct. 6	Leeds	A	15	2	Nov. 3	Warrington (F)	H	3	14
" 9	St. Helens (S.F.W.C.)	A	10	9	" 10				
" 13	Warrington	H	20	5	" 17	Warrington	H	8	0
" 20	Wakefield	A	13	10	" 24	Workington T.	A	2	6
" 27	Leeds	H	13	12	Dec. 1	Widnes A. League	H	18	7
Nov. 3	Huddersfield	A	0	13	" 8	Liverpool C.	A	22	9
" 10	Workington T.	H	9	9	" 15	Workington T.	H	10	0
" 17	Warrington	A	4	15	" 22	Wigan	A	5	13
" 21	Workington T.	A	0	10	" 26				
" 24	Wakefield	H	12	6	" 29	St. Helens	A		
Dec. 1	Hull K.R.	A	15	12	1963				
" 8	Huddersfield	H	17	9	Jan. 5				
" 15	Workington T.	A	15	7	" 12	Swinton	A		
" 22	Wigan	H	14	2	" 19	St. Helens	H		
Feb. 2	Oldham	H	3	0	" 26				
" 9	Swinton				Feb. 2	Oldham	A		
" 16	R.L.C.C. 1st Round	A	6	6	" 9				
" 23	Swinton	A			" 16	Swinton	H		
" 23	Wigan	A			" 23	Barrow	H		
Mar. 2	R.L.C.C. 2nd Rd.				" 23	Leigh	H		
" 9	Hull	H			" 9	Salford	A		
" 16	Hull	A			" 16	Blackpool B.	H		
" 23	Castleford	H			" 23	Warrington (F)	A		
" 30	Oldham	A			" 30	Oldham	H		
Apl. 1	Halifax	A			Apl. 6	Leigh	A		
" 6	Featherstone R.	H			" 13				
" 13	Halifax	H			" 20	Widnes Am. L.	H		
" 15	Bramley	A			" 23	Blackpool B.	A		
" 20	Castleford	A			" 27	Liverpool C. (F)	A		
" 27	Workington T.	H			May 3	St. Helens	A		
May 1	Hull K.R.	H			" 10	St. Helens	H		
" 4	St. Helens	H			" 18	Swinton	A		
" 8	Featherstone R.	A			" 25				
" 13	St. Helens	A							
" 18	Swinton	H							
" 22	Bramley	H							

(F)—Friendly Matches.

P—Postponed