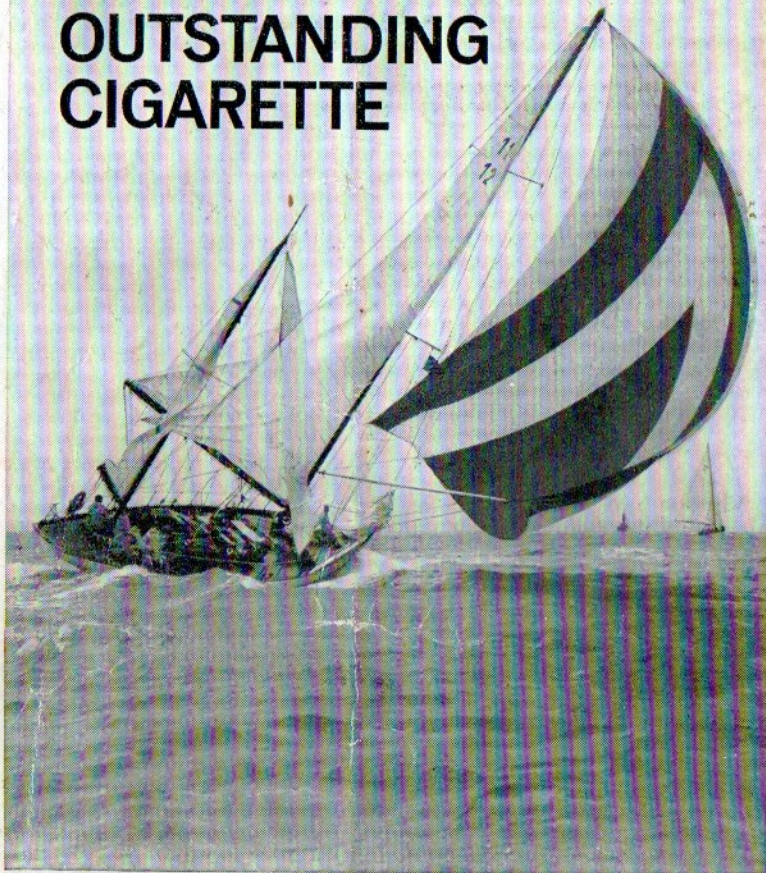


BRITAIN'S OUTSTANDING CIGARETTE



Get the greatest enjoyment out of every cigarette. Smoke Senior Service. Always full and firmly packed... with the added enjoyment of cooler-smoking Virginia tobaccos.

And, above all, Senior Service Satisfy.

SENIOR SERVICE *Satisfy*

Printed by Frisby, Sons & Whipple Ltd., East Street, Leeds 9. Tel. 30527/8/9

THE RUGBY FOOTBALL LEAGUE

Challenge Cup Semi-Final

HULL K.R. v. OLDHAM

SATURDAY
11th APRIL
1964

At
HEADINGLEY
LEEDS

Kick-off 3 p.m.




OFFICIAL SOUVENIR PROGRAMME - Price 1/-



The MACKESON RUGBY LEAGUE CONTEST

*Organised by Whitbread & Co. Ltd. in
association with The Rugby Football League*



 The Mackeson Rugby League Contest Trophy and a cheque for 200 guineas goes to the team with the best scoring record for the season. Cheques for 100 guineas and 50 guineas go to the runners-up.

Specially inscribed silver tankards will be awarded to the top scoring team in each of five periods during the season, and a special champion's flag to be flown throughout the following period.

The 5 periods are :

AUGUST 20 to SEPTEMBER 28

SEPTEMBER 30 to NOVEMBER 23

NOVEMBER 25 to JANUARY 11

JANUARY 13 to MARCH 7

MARCH 9 to MAY 9



Club Histories

Oldham

The history of rugby football in Oldham goes back to February 1873 when at a meeting at the Prince Albert Hotel, Union Street, Oldham, it was decided to form a Rugby Union football club. Although rugby had previously been played in the town at Werneth, the Oldham Club date their history from 1873. The first games were on a field behind the Glodwick Mill and the dressing rooms at the Shakespeare Hotel, Glodwick. The first match was against Stalybridge on 17th February 1873, and the club's colours were black and amber.

A move was made to Clarksfield, where admission could be charged and in 1889 they moved to the present Watersheddings ground. Swinton were the first visitors and defeated their hosts.

Oldham were one of the pioneer members of the Northern Union when the "split" occurred in 1895 and in the first season they tied with Runcorn for the Lancashire section of the Championship. Another early honour was when they won the N.U. Challenge Cup, being the first Lancashire Club to take the trophy by beating Hunslet 19 pts. to 9 at the Fallowfield Grounds, Manchester. Although Oldham have subsequently won the Challenge Cup in 1925 and 1927 and been runners-up on four occasions they have never appeared at Wembley.

More recent successes have been achieved in the other competitions, mainly during the mid fifties when they were consistently high in the League and provided internationals such as Frank Pitchford, Alan Davies, Sid Little, Bernard Ganley, Charlie Winslade and Derek Turner. The Northern League Championship was won in 1956/57 when Hull were the runners-up, the Lancashire County Cup was won on three successive occasions in 1956, 57 and 58 and the Lancashire County League trophy was obtained in seasons 1956/57 and 1957/58.

The first Secretary of the Northern League from 1895 to 1920 was an Oldham man, Mr. Joseph Platt, who was Secretary at the George Hotel, Huddersfield, when the "split" from Rugby Union took place.

The ground capacity of Watersheddings is 26,000 with covered accommodation for 16,000 and the club is one of the few remaining member-clubs.

Hull Kingston Rovers

Rovers is an appropriate name for the Club which in the first twelve years of its existence had played on seven grounds in West Hull before moving to Craven Street in Holderness Road, East Hull, and finally to its present home at Craven Park in 1922.

The Club was formed in 1883 as Kingston Amateurs, a name which was changed to Hull Kingston Rovers in season 1885/6. Their nick-name "The Robins" may have arisen because the colour of their jerseys at that time was blue with a red band. No matter what the origin, the name has stuck to the present time.

In 1895 Rovers were playing at the Athletic Grounds, Boulevard, which were leased from the Railway on a short lease. When the Railway decided to sell the ground, the Rovers were unable to raise the money required and they had to vacate it. Their wealthier neighbours, Hull F.C. purchased the ground and have played there ever since. The Rovers then moved to Craven Street and later to Craven Park. Over the years the Club has had its financial troubles and one of the worst of these was in 1939 when they had to sell their ground to a Greyhound Racing Syndicate and continue to play there as tenants instead of owners.

"The Robins" were the only Hull Club to win the Yorkshire Rugby Union Challenge Cup, although this was achieved when most of the Clubs had joined the Northern Union. They joined the Northern Union in 1897 but had to play in the Lancashire Senior Competition before being taken into the First Division.

Rovers have never won the Challenge Cup although they played in the 1905 and 1925 Finals.

Of the present team Peter Flanagan has played for Great Britain and John Taylor has toured Australia.



**FOR THE
BEST
REPORTS**

**Read the
DAILY EXPRESS
and the SUNDAY EXPRESS**

Cup History

There's not only glamour but money in the cup, but it has not always been so. When the Challenge Cup was first put up for competition, and was won by Batley in April 1897 the receipts amounted to £624-17-7, for an attendance of 13,492—quite a contrast with the 95,000 crowds and nearly £45,000 accruing from gate receipts nowadays.

Batley were quite a force in the Rugby League world in the early years of the Northern Rugby Football Union (as the Rugby Football League used to be called). They beat St. Helens 10-3 in the first Cup-tie, and also won the cup the following year by beating Bradford 7-0. They have not competed in the Final since 1898. Incidentally the 10 points which the Batley team ran up against St. Helens included a dropped goal which at that time counted 4 points.

ATTENDANCES AND RECEIPTS


Prior to the first World War the highest attendance at a Cup Final was 32,507 at Leeds in 1903 when Halifax beat Salford by 7 points to 0. The gate receipts on that day were £1,834-13-6.

Between the two world wars the highest attendance prior to going to Wembley was 41,831 at Rochdale in 1924 when Wigan beat Oldham by 21-4, the gate receipts were £3,712-0-0. The highest attendance at Wembley prior to the war was not far in excess of the Rochdale figure; that was in 1939 when 55,453 saw Halifax beat Salford by 20-3. The 50,000 mark was topped in 1936, 1938 and 1939, and the highest receipts were obtained in 1939—£7,681.

POST-WAR RECORDS

The attendance in post-war years has been limited to 95,000, and this figure has been reached in 1949, 1950, 1951, and 1961. The highest figure for receipts was in 1963 when gate receipts amounted to £44,521-17-0, which added to television and radio fees of £3,670-0-0, grossed £48,191-17-0.

The most successful clubs in the Cup Competition are Wigan and Leeds both with 6 wins. Close runners-up are Wakefield Trinity with 5 wins. Wigan has also appeared in the Final more times than any other club—11 times.



GUINNESS

given a try leads at once
to a conversion

TRY GUINNESS YOURSELF AFTER THE MATCH

G.E. 3586-K

FORWARD STRENGTH



(Reproduced by courtesy of Hull Daily Mail)

Harry Poole, Hull K.R.'s skipper, makes an opening for International forward John Taylor.

NOT SPECTACULAR BUT VITAL



(Courtesy of Oldham Chronicle)

Len McIntyre crowns an Oldham forward effort with a decisive try in the second round against Featherstone Rovers.

Best in the field for ALL sports!



LITESOME
Sportswear

You can pick out the team wearing 'Litesome' Rugby-gear—any time; The garments are smart and tough, designed and made with the rigours of the game in mind. Ask your Sports Dealer for the 'Viking' or 'Gladiator' Jerseys, for the smart balloon-side shorts and for the famous 'Litesome' Tracksuits. And don't forget your need of a 'Litesome' Supporter — essential to the active sportsman.



FRED HURTLEY & SON LTD · KEIGHLEY · YORKSHIRE

Hull K.R. Pen Pictures

CYRIL KELLETT. Full Back. Married. Age 25. 5ft. 8ins., 12st. Mine haulier. Signed in 1956 from a Pontefract Junior Club. In 1955 gained a Yorkshire Amateur Cup Winner's medal. Leading scorer in season 1958/59 and 1959/60. At present leads the list of goal kickers. Has played for Yorkshire County.

GRAHAM PAUL. Wing. Married. Age 27. 5ft. 7½ins., 11st. 3lbs. Publican. Signed for Hull K.R. November, 1958, from Cornwall R.U. Played 12 times for Cornwall County and 4 times for the R.A.F. Top club try scorer in his second season and last season created club's try-scoring record. Played at Carcassonne for Yorks. XIII last season.

TERENCE MAJOR. Centre. Single. Age 21. 5ft. 10ins., 12st. Apprentice Joiner. Joined the under 17 team and progressed to the first team in 1959, since when he has been a regular member of the first team.

MICHAEL BLACKMORE. Centre. Married. Age 25. 6ft., 13½st. Clerk. Joined Hull K.R. from Barnstaple R.U. Club in August, 1961. Capped many times for Devon County, also had trials for England. Captained Devon County in his last season.

ROBERT HARRIS. Wing. Married. Age 25. 5ft. 11ins., 13st. Clerk. Signed from Junior football in 1961. A strong runner and second club try scorer.

DAVID ELLIOTT. Scrum or off half. Married. Age 24. 5ft. 7ins., 10st. 5 lbs. Ship repair labourer. Played for Hull Boys and Yorkshire Boys whilst at school; joined Boulevard Juniors but signed for Hull K.R. in 1956, and has been mostly in the first team ever since.

ARTHUR BUNTING. Scrum half. Married. Age 26. 5ft. 7ins., 11st. 7lbs. Miner. Signed from Featherstone junior football by Bramley in 1956. Transferred to Hull K.R. in 1959 and has been on first team duty practically ever since.

PETER FLANAGAN. Hooker. Single. Age 23. 5ft. 7ins., 12st. 11lbs. General labourer. Signed from local Craven Street Y.C. in May, 1960. Played for Great Britain twice last season and also for England and a Yorkshire XIII. Capped by Yorkshire County.

BRIAN TYSON. Front or Second Row Forward. Married. Age 23. 5ft. 10½ins., 14st. Steel Stockists' yardman. Signed in August 1959 from Craven Park Juniors. A regular member of the first team and can play in any forward position.

JOHN TAYLOR. Second Row or Loose Forward. Married. Age 25. 5ft. 11ins., 14st. 2lbs. Docker. Played for Yorkshire Schoolboys. Signed from Junior football in March 1958, and has been a regular member of the first team ever since. Toured Australia in 1962.

ALAN BURWELL. Off-half. Age 19. Signed 29th May, 1961 from East Hull Juniors F.C. Local honours with the Hull and District League.

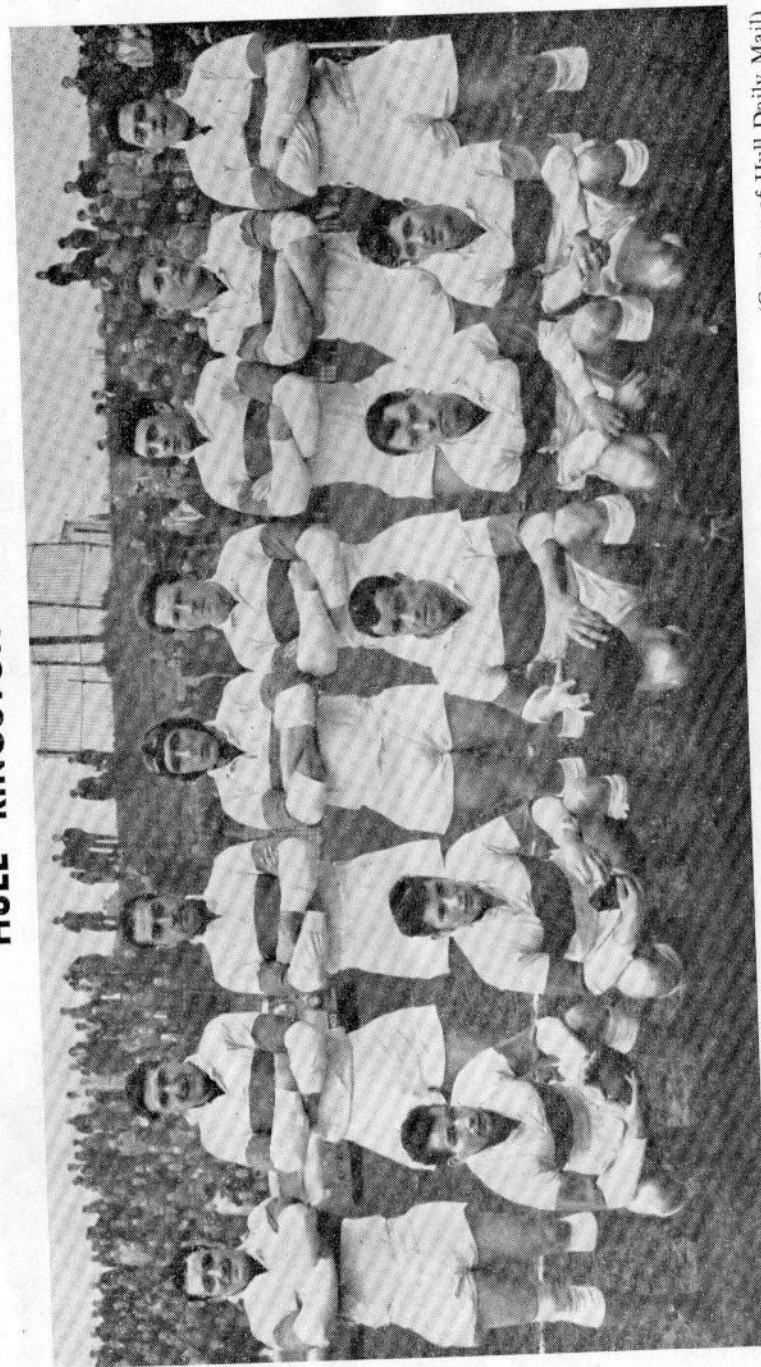
LEN CLARK. 2nd Row Forward. Age 24. 6ft., 13st. 10lbs. Signed from Leeds University R.U. in 1959.

JOHN BATH. Front Row Prop. Age 24. 6ft. 1in., 17st. Played for Bridlington R.U. and Hull and East Riding R.U. Signed Nov. 4th, 1963.

JOHN ROBERT MOORE. Centre. Age 20. 5ft. 9ins., 13st. Signed from East Hull R.L.F.C. 1962.

ERIC PALMER. 2nd Row Forward. Age 20. 6ft. 1ins., 14st. Signed from local football in 1961.

HULL KINGSTON ROVERS



(Courtesy of Hull Daily Mail)
 Back row: Kellett, Palmer, Clark, Tyson, Moore, Blackmore, Major, Taylor.
 Front row: A. Burwell, Flanagan, Poole, Paul, Elliott.

Hull K.R.

Colours : All red jerseys, white shorts, red and white stockings

1. **C. KELLETT** ✓ 6 5
Full Back
2. **G. PAUL**
Right Wing
3. **T. MAJOR**
Right Centre
4. **J. MOORE** ELLIOT.
Left Centre
5. **M. BLACKMORE** ✓ T
Left Wing
6. **A. BURWELL**
Out Half
7. **A. BUNTING**
Scrum Half
8. **B. TYSON**
Prop Forward
9. **P. FLANAGAN**
Hooker
10. **J. TAYLOR**
Front Row Forward
11. **E. PALMER**
Second Row Forward
12. **L. CLARK**
Second Row Forward
13. **H. POOLE**
Loose Forward

The Teams

CURTAIN RAISER

The Yorkshire County
Under 17 Cup Final
between Leeds Juniors
and Castleford Juniors
will kick off at 1.15
p.m.

Oldham

Colours : All white jerseys, blue shorts, blue and white stockings

- 5 1. **F. DYSON**
Full Back
2. **G. SIMS**
Right Wing
3. **J. DONOVAN**
Right Centre
4. **P. SMETHURST** ✓ T
Left Centre
5. **T. SIMMS**
Left Wing
6. **V. NESTER**
Out Half
7. **J. PYCROFT**
Scrum Half
8. **C. BOTT**
Prop Forward
9. **L. McINTYRE** ✓ 6
Hooker
10. **K. WILSON**
Front Row Forward
11. **H. MAJOR**
Second Row Forward
12. **S. WHITEHEAD**
Second Row Forward
13. **D. PARKER**
Loose Forward

Referee: D. T. H. DAVIES (Manchester)

Touch Judges: S. LIGHTFOOT (Dewsbury), R. OLIVER (Wakefield)



Rugby Outfits

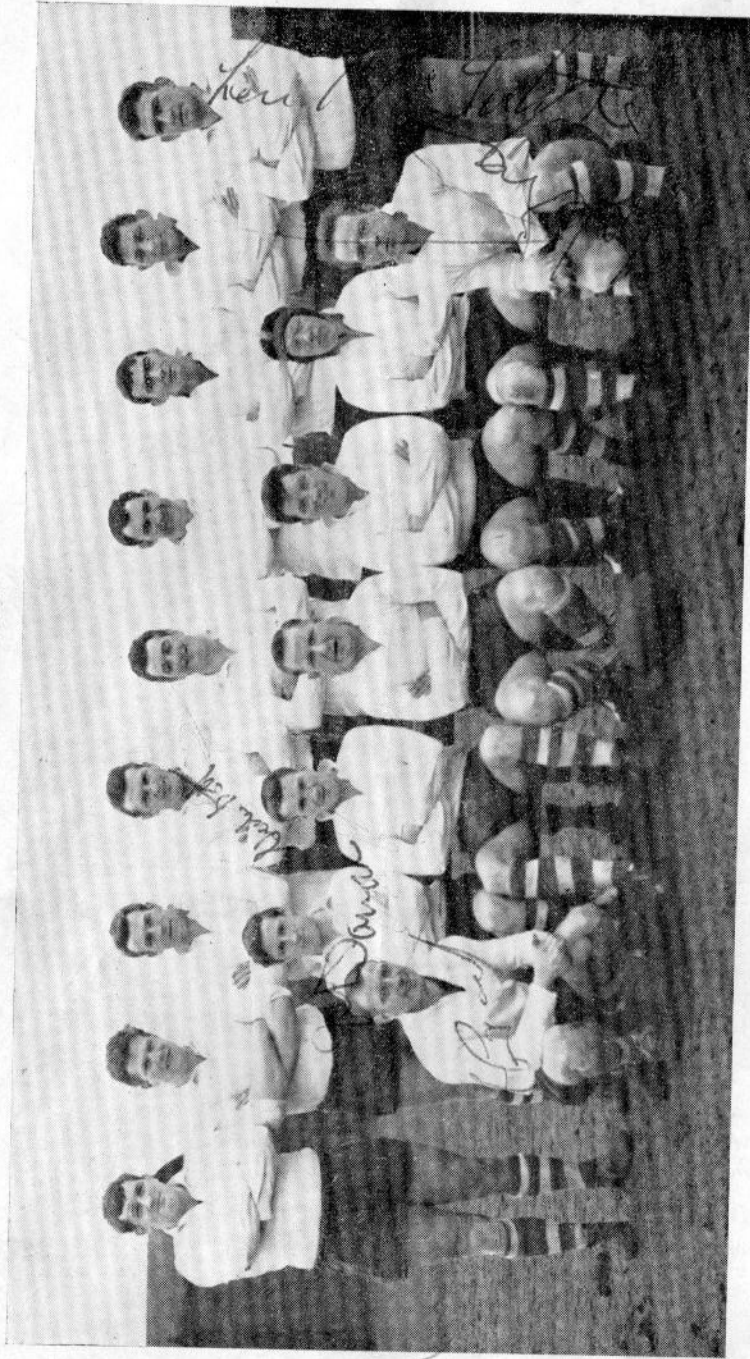
A Tough Game Needs Tough Kit

Bukta Rugby shorts, jerseys and hose have been worn by more leading teams than any other make.

Ask your Sports Outfitter for Full True Colour Catalogue.

In case of difficulty write to :

SALES PROMOTION MANAGER, BUKTA, STOCKPORT, CHESHIRE.



Back row: Major, Whitehead, Lord, Bott, Noon, Robinson, Wilson, Parker, McIntyre.
 Front row: Pycroft, Donovan, Sims, Dyson, Smethurst, Simms, Nestor.

(Courtesy of Oldham Chronicle)

Oldham Pen Pictures

- FRANK DYSON.** Full-back. Age 32. 5ft. 9ins., 14st. Secured on transfer from Huddersfield commencement of this season. Played 15 times for Yorkshire County and twice for Great Britain. Has kicked over 100 goals this season. Motor mechanic.
- GEOFFREY SIMS.** Wing. Age 25. 5ft. 10ins., 12st. 4lbs. Previously with Leigh Colts. Electric welder.
- JOHN DONOVAN.** Centre. Age 23. 5ft. 11ins., 13st. Previously with St. Helens. Lancashire County under 19s. Clerk.
- PETER SMETHURST.** Centre. Age 26. 5ft. 9ins., 15st. Formerly with Swinton. Master window cleaner.
- TREVOR SIMMS.** Wing. Age 23. 5ft. 9ins., 12st. Lancashire County schoolboy sprinter, played for last three seasons with Lancashire County, and reserve for International side this season. School teacher.
- VINCENT NESTER.** Out-half. Age 26. 5ft. 9ins., 12½st. Secured from Tyldesley R.U. Played in last semi-final against Hull six years ago. Plasterer.
- JACK PYCROFT.** Scrum-half. Age 26. 5ft. 4ins., 10st. 5lbs. Secured on transfer from Leeds. Has been regular scrum half this last two seasons. Electricity Board employee.
- CHARLES BOTT.** Front-row forward. Age 22. 6ft. 1in., 16½st. Secured from Old Thornesians R.U. (Yorks.). In his second season of Rugby League. Metallurgist.
- LEONARD McINTYRE.** Hooker. Age 29. 6ft., 15st. 3lbs. Lancashire County, Gt. Britain, R.L. XIII. Reserve for Gt. Britain 1957-8-9. Has scored 29 tries in one season. Storeman-driver.
- KENNETH WILSON.** Front-row forward. Age 23. 6ft. 2½ins. 16st. Secured from R.A.F. R.U., played for Gloucester R.U., and County; also England R.U. In his first season of Rugby League, and born in Lincolnshire. Clerk.
- GEOFFREY ROBINSON.** Second-row forward. Age 26. 6ft. ½ins., 15½st. Secured on transfer from Whitehaven at a fee of £9,000. Cumberland County. Advertising Manager.
- STUART WHITEHEAD.** Second-row forward. 6ft. 1in., 14½st. The only local in the side. Played Junior local Rugby League. Policeman. Just secured a position in the first team.
- HARRY MAJOR.** Second-row forward. Age 25. 5ft. 10ins., 15½st. Secured on transfer from Warrington. Lancashire and England Junior player. Jig and Tool draughtsman.
- DAVID PARKER.** Loose Forward. Age 25. 6ft. 2ins., 14½st. Secured from Manchester R.U., played Lancashire County R.U. and English trial R.U. Played twice for Gt. Britain against France this season. University-trained Education and Welfare officer.

The Road to Wembley

HULL K.R.

First Round drew with Rochdale at home—12 points to 12.

Scorers: Tries—Blackmore, Harris. Goals—Kellett (3)

Attendance 7,129. Gate Receipts £1,045-5-9.

First Round Replay beat Rochdale at Rochdale by 22 points to 7.

Scorers: Tries—Kellett, Burwell, Elliott, Harris. Goals—Kellett (5)

Attendance 5,068. Gate Receipts £642-13-6.

Second Round beat York at York by 23 points to 7.

Scorers: Tries—Palmer, Moore, Poole, Elliott, Bunting.

Goals—Kellett (3), Clark

Attendance 12,259. Gate Receipts £1,972-14-0.

Third Round beat Barrow at home by 38 points to 4.

Scorers: Tries—Taylor (3), Flanagan, Major, Clark, Moore, Elliott.

Goals—Kellett (7).

Attendance 7,114. Gate Receipts £1,114-11-0.

OLDHAM

First Round beat Keighley at Keighley by 11 points to 4

Scorers: Try—Bott. Goals—Dyson (4)

Attendance 5,996. Gate Receipts £703-7-7.

Second Round beat Featherstone Rovers at Oldham by 9 points to 7

Scorers: Try—McIntyre. Goals—Dyson (3)

Attendance 12,974. Gate Receipts £2,135-17-6.

Third beat Hunslet at Hunslet by 7 points to 5

Scorers: Try—Sims. Goals—Dyson (2)

Attendance 10,676. Gate Receipts £1,814-19-0.

WIDNES

First Round drew with Leigh at Leigh 2 points to 2

Scorers: Goal—Randall.

Attendance 9,870. Gate Receipts £1,380-1-9.

First Round Replay (1st) drew with Leigh at Widnes 11 points to 11

Scorers: Try—Measures. Goals—Randall (4)

Attendance 9,432. Gate Receipts £1,201-4-10.

First Round Replay (2nd) beat Leigh at St. Helens by 14 points to 2

Scorers: Tries—Hughes, Measures. Goals—Randall (4)

Attendance 12,091. Gate Receipts £1,535-18-0.

Second Round beat Liverpool City at home by 16 points to 6.

Scorers: Tries—Owen, Measures. Goals—Randall (5)

Attendance 8,592. Gate Receipts £1,098-13-3.

Third Round drew with Swinton at home 5 points to 5

Scorers: Try—Owen. Goal—Randall

Attendance 19,015. Gate Receipts £2,653-12-6.

Third Round Replay (1st) drew with Swinton at Swinton Nil-nil

Attendance 14,756. Gate Receipts £2,147-4-0.

Third Round Replay (2nd) beat Swinton at Wigan by 15 points to 3

Scorers: Tries—Myler, Gaydon, Thompson. Goals—Randall (3)

Attendance 21,369. Gate Receipts £2,746-11-3.

CASTLEFORD

First Round beat St. Helens at St. Helens by 13 points to 6

Scorers: Tries—Howe (2), Hardisty. Goals—Clark, Hardisty

Attendance 15,977. Gate Receipts £2,069-17-3.

Second Round beat Whitehaven at Whitehaven by 29 points to 5

Scorers: Tries—Howe (2), Gamble, Hardisty (2), Bryant, Walton.

Goals—Hardisty (4)

Attendance 6,434. Gate Receipts £751-18-9.

Third Round beat Blackpool at Blackpool by 25 points to 4

Scorers: Tries—Bryant, Bell, Smith (2), Hardisty (2), Howe. Goals—Clarke (2)

Attendance 7,206. Gate Receipts £1,026-0-0.

The Cup Final takes place at the Empire Stadium, Wembley, on Saturday, May 9th, 1964. Tickets for the Standing Enclosure at 4/- each can be obtained from the Rugby League Offices, 180 Chapeltown Road, Leeds 7.

Rugby League is my Business



the inside column on your game by

JOE HUMPHREYS

in the

Daily Mirror



BRITISH OLYMPIC APPEAL FUND—1964
WIN THE BRITISH OLYMPIC ASSOCIATION'S

'TRIP TO TOKYO'

CONTEST

Three separate, wonderful prizes of all-expenses-paid trips for two for the fortnight of the 1964 Olympic Games must be won.

Each prize includes return flights to Tokyo in B.O.A.C.'s magnificent new V.C. 10, first-class hotel accommodation, tickets for a selected programme of Olympic Games events and £20 spending money—or you can take a cash prize of £750.

CHOOSE EIGHT FROM THESE

- A. More professional coaches.
- B. More mixed clubs for adults, offering various sports and social activities.
- C. Offices and paid administrative staff for all sports.
- D. More medical research into sports problems.
- E. More sports facilities for the general public.
- H. Better arrangements made for school leavers to join sports clubs.
- J. More international sports events.
- K. More sports activities and facilities in schools.
- H. More funds available to pay legitimate expenses of competitors.
- R. Grants to ensure better use of existing sports facilities.
- S. More commercial sponsorship of sport.
- T. More Government financial aid for sport.

ALL YOU DO

Here are twelve suggestions designed to lead to the best possible performance by the Great Britain team at the 1968 Olympic Games. Use your skill to select EIGHT suggestions likely to be of the greatest benefit and place them in order of importance.

Print the identity letters of your selections in the appropriate places in the first downward column of the entry form. The other columns are for additional attempts.

You may make up to a maximum of 12 attempts on each entry form, and send as many official entry forms as you like. A donation of 3d. to the Olympic Appeal Fund must be sent for every attempt and a donation of 3/- will entitle you to twelve attempts.

A panel of judges will award the prizes to the senders of the three entries they consider best. In the event of ties, an eliminating contest will be held. A copy of the full rules may be obtained by sending a s.a.e. to the organisers of the contest.

The Judges, and Members of the B.O.A. Council and employees of the B.O.A., their agents and I.C.T Ltd.—and their families, are not eligible to enter. All winners will be notified by post.

CLOSING DATE FOR ENTRIES—27th JUNE, 1964.

— CUT HERE —

ENTRY FORM	Col. 1	Col. 2	Col. 3	Col. 4	Col. 5	Col. 6	Col. 7	Col. 8	Col. 9	Col. 10	Col. 11	Col. 12
1st choice												
2nd choice												
3rd choice												
4th choice												
5th choice												
6th choice												
7th choice												
8th choice												
DONATIONS ▶	3d.	3d.	3d.	3d.	3d.	3d.	3d.	3d.	3d.	3d.	3d.	3d.

Entries in a sealed envelope (3d. postage) must be sent to:—

“TRIP TO TOKYO” CONTEST, P.O. Box 27/4000, LONDON, W.1.

NAME (Mr./Mrs./Miss)

ADDRESS

To cover the above entries I enclose cheque/P.O. value
and I agree to abide by the rules of the contest.

Send crossed postal order or cheque payable to the “Trip to Tokyo” Contest.

Donations — after deduction of expenses — will go
towards the £150,000 needed to send the British Team to the 1964 Olympic Games

ALL ENTRIES WILL BE CHECKED BY AN I.C.T COMPUTER

The Fixture Formula

The Two Division experiment has come to a quick and premature end. Clubs could not even agree to continue with it for the full trial period of three years. Why the change of mind? Those clubs which in the past have found it very easy to win the majority of their matches, some by phenomenal scores, have found things much harder with two divisions. They have not won so many games and possibly support has dwindled because of this. From the overall point of view the regional games have supplied fixtures between the most highly placed clubs and the lowest and these games have naturally not yielded as big an aggregate of attendances as games played between the topmost clubs. On the other hand there are some clubs who have derived benefit from the extra “bite” in the League games. For the first time for many years the results of their games have been of some significance. Several of these clubs hoped to retain two divisions. **It will never be known whether attendances would have dropped even more during the last two years under the old single League system.**

However, the decision is now made and clubs have decided to revert to one League next season. We all remember the disadvantages of one League. In the second half of the season and, sometimes for even a greater portion of the season, the games played by many clubs were of no competitive interest. What can be done to improve their lot?

“TOP SIXTEEN”

One suggestion is that instead of a Top-Four play off, a Top-Sixteen play-off should be organised. A trophy could be awarded to the League Leaders on the grounds that a full season's successful playing record deserves some recognition. The League programme would however be mainly a qualifying competition for the top sixteen places in the League table. These sixteen would play off, the top four being seeded in the Draw so that it would be possible for the semi-finals to be played between the top four clubs provided each won its matches. Playing off the last sixteen is no more illogical than playing off the top four. In fact if a League Leadership trophy is awarded, then this new scheme would, in toto, be more logical than the single division scheme which has operated in the past.

Furthermore, half of the clubs—the successful half, the half which has won more matches than it has lost—will have an extra tit-bit at the end of the season and there is no doubt that public interest is focused only on matches of special interest. The “common or garden” League game no longer attracts the crowds.

The question may be asked, “What about the bottom half?” Well, the bottom half of the League tables consists of clubs who have had a poor season and the fewer matches they play the more money they will save. There is no point on putting on another competition for losing teams. That would only be inviting disaster.

NEW FORMULA

No matter whether a top four or a top sixteen is introduced next season, a fixture formula will have to be devised. If there is no Bradford Club, then there will be fifteen Yorkshire Clubs and fourteen clubs from Lancashire and Cumberland. With an odd number of clubs in the past the bottom Yorkshire club has played in neither County League and fixtures have been made up as follows:—Each Yorkshire Club plays each of the other thirteen Yorkshire League clubs and five Inter-County fixtures. Similarly each Lancashire club plays thirteen clubs in its own County League table and five Inter-County fixtures. This makes a total of 36 fixtures, each club playing 18 clubs home and away. Thirty-six seems to be the number of fixtures which has so far met with the approval of the majority of clubs.

COUNTY LEAGUES

The Lancashire and Yorkshire League Trophies used to be awarded to the clubs having the best performances in their own counties. No extra matches were played to determine these trophies and they have yielded no extra revenue. It could be argued quite strongly that they are a waste of time. Clubs do, however, prefer to play clubs in their own County rather than cross the Pennines and so next season's fixture formula will no doubt be based on this premise.

Continued overleaf

Changes in Laws

The Rugby League International Board met in Leeds at the conclusion of the Australian tour of England at the beginning of December, 1963, and as a result of the Board's deliberations there will be a few changes in the Laws of the Game next season. The laws of Rugby League Football, and of Rugby Union for that matter, are extremely complicated and there is a natural inertia in the public to changes as it usually means having to digest something new having just got used to the old.

However, the public should welcome some of the changes resolved by the Board because they will lead to simplification. Very few spectators know all the complicated laws relating to the starting of play at the centre spot, the twenty-five line, the five-yards scrum and the drop-out from between the posts. What the public does know is that when the teams line up for the kick-off, tension builds up to the moment when play is started and then usually, there is a complete anti-climax because the kicker either kicks it out of the field on the full, or some of his players run off-side. Any tactic which deprives the opponents of the ball is likely to be adopted.

SIMPLIFICATION

When the new Laws come into force, things will be relatively simple. For one thing, the five-yard scrum will disappear entirely and so will the arguments as to where the scrum should be formed. The new Laws are easy for everyone to understand. If the ball goes "dead" after last touching an attacking player, then the game is re-started with the drop-kick from the twenty-five line, otherwise it is re-started with a drop-kick from between the posts.

If players when kicking-off try to stop the play (instead of starting it) by kicking the ball out of the field of play on the full, then they will be penalised.

There will only be one way of starting play from the half-way line and that will be by a place-kick. When the play is re-started by a place-kick or drop-kick, the ball will always have to travel a forward distance of ten yards to be in play.

Briefly, those are the changes proposed concerning the starting and re-starting of play.

PENALTY KICK

The Board would not agree to England's proposals that the tap penalty be re-introduced, but they did go so far as to agree to a new Law which stipulates that the opponents of the kicker shall retire ten yards. The kicker must, however, kick the ball a forward distance of ten yards, he cannot tap the ball past the mark and re-gather it as was the case when the "tap penalty" prevailed.

SCRUM

Some minor changes were made to scrum rules, two of which have already been in operation over here for the last season or two during an agreed experimental period. Following a penalty kick to touch, the kicker's side shall have the "loose head" and put the ball into the scrum. The ball shall be in play after emerging from the scrum behind the second-row forwards. An additional New Zealand amendment was also approved which stipulates that the ball must also emerge between the inner feet of the second-row forwards. New Zealand felt that this would make it more easily possible to open up play from the base of the scrum.

THE FIXTURE FORMULA—Continued from previous page

Assuming this to be so, then the County League winners can still be decided in the manner which operated before the two divisions were tried.

If a new club is formed in Bradford and it can take part in a League programme in 1964/65 then, no doubt, the formula which was in operation prior to the experiment of two divisions will be re-introduced. This was based on one Yorkshire club transferring to the Lancashire League, making fifteen clubs in each of the two County Leagues. Each club then played the fourteen other clubs in its own County League and four Inter-County fixtures.

Biggest hit of the Season!!

WINDSORS Cricket

**FIXED
ODDS**



**ONLY
COUPON
OF
ITS
KIND
IN THE
WORLD**

* **WONDERFUL LISTS**
* **SENSATIONAL ODDS**

INDIVIDUAL BATTING
COUNTY AND AUSTRALIAN STARS

10-1
FOUR TO SCORE
20

100-1
FOUR TO SCORE
50

**GREAT NEW
RACE STYLE
LISTS
NO LIMIT
SINGLES, DOUBLES
TREBLES**

25-1
FOUR TO SCORE
25
ON HANDICAP

**AGENTS
IN EVERY
COUNTY**

WRITE FOR FREE SUPPLY OF
COUPONS NOW TO—

WINDSORS CRICKET FIXED ODDS • LEEDS 1