



# MACKESON

## Rugby League Contest

*Organised by Whitbread & Co. Ltd.  
in association with The Rugby Football League*

The Mackeson Rugby League Contest Trophy and a cheque for 200 guineas goes to the team with the best scoring record for the season. Cheques for 100 guineas and 50 guineas go to the runners-up.

The Champions' Flag and inscribed silver tankards are awarded to the top scoring team in each of five periods during the season.

### THE 5 PERIODS ARE:

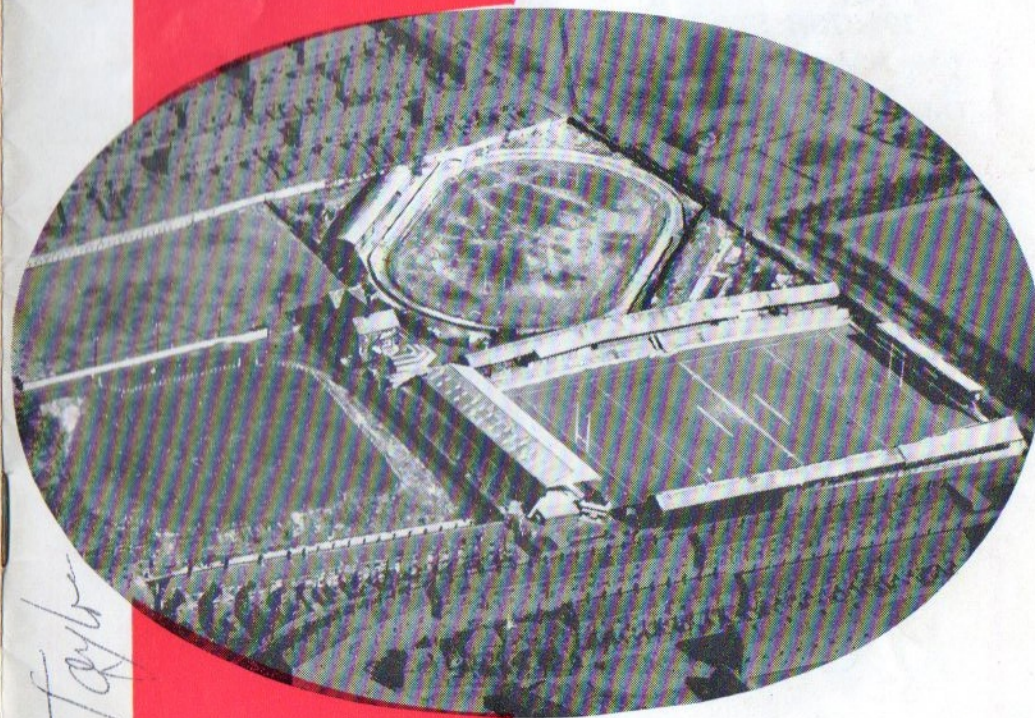
August	6	to	September 24
September	26	to	November 19
November	21	to	January 14
January	16	to	March 11
March	13	to	April 29



OFFICIAL  
**6d.**  
PROGRAMME

# OLDHAM

## *Rugby League Football Club*



**RUGBY FOOTBALL LEAGUE**  
Northern League Championship Match

**OLDHAM** 12  
v.

**ROCHDALE** 7

**FRIDAY, 14th OCTOBER, 1966**  
Kick-off 7.30 p.m.



## Hinchliffe Bros.

(Chemists) Ltd.

1/9 FEATHERSTALL ROAD NORTH  
OLDHAM : Phone MAI 2654

Wine and Spirit Merchants

for all **FIRST AID** Supplies

INDUSTRIAL CHEMICALS, ACIDS

**SOLVENTS** : Acetone, Carbon Tet.,

White Spirit, Trichlorethylene, Toluol

TELEPHONE : MAIn 4301 and 9116

## G. Barlow & Sons

Limited

UNION ST. WEST GARAGE

Near Royal Infirmary

**OLDHAM**

MOTOR-CARS AND SUPERIOR SALOON

COACHES FOR HIRE

WEDDINGS & JOURNEYS A SPECIALITY

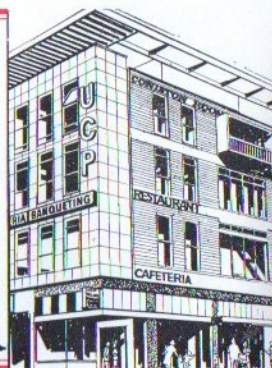
For a really good meal visit a

# UCP

**RESTAURANT**

19 HIGH STREET, OLDHAM

When in Manchester visit the **MERCHANTS**, 92 Market St., the **MANOR**, Brown St. (Market St.), the **TUDOR**, Oxford St. (nr. Odeon) & the **PALL MALL**, Market St. →



## GEORGE HILL (Oldham) LIMITED

TIMBER MERCHANTS and FORMICA DISTRIBUTORS

IMPORTED SOFTWOODS, HARDWOODS, PLYWOODS, WALLBOARDS

MOULDINGS : DOORS : DOWELS

Stockists of WEYROC and INTERWOVEN FENCING

SAWING, PLANING and MOULDING MILLS

**SCOTTFIELDS SAWMILLS ASHTON ROAD, OLDHAM**

Telephone : MAIn 5453/4

# OLDHAM



# ALES

MILD AND BITTER ON DRAUGHT

BOTTLED BEERS AND MINERALS

WINES, SPIRITS AND TOBACCO O.B. PALE ALE  
AVAILABLE IN THE PAVILION

**OLDHAM BREWERY COMPANY LIMITED**

COLDHURST STREET :: OLDHAM

Telephones : MAIn (Oldham) 8305 & 8306

# OLDHAM FOOTBALL CLUB

**WATERSHEDDINGS - OLDHAM**

Telephone No. 4865 (Main)

Secretary: J. STRINGER

**OFFICIALS**

President: H. JONES, Esq.

Acting Vice-President: A. F. CAMPBELL, Esq.

Hon Treasurer: C BRADLEY, Esq.

Committee:

Messrs. J. Burke, P. G. Carter, J. Errock, K. Fisher, W. Howard, M.B.E., J.P.,

A. Parker, T. E. Rees, R. L. Thomas, A. Wormald

## WELCOME TO ROCHDALE

The 'Hornets' visit Watersheddings this evening with some fine victories under their belts. They have already disposed of Whitehaven, Huddersfield and Warrington and they have held both St. Helens and Swinton to draws all at the Athletic Grounds, but they are still looking for their first away success.

Rochdale, this season, are playing some exceptionally good rugby and are pleasing their fans with their recent displays.

I was an eye witness at their magnificent victory against Warrington last Friday and believe me they certainly played some fine football. At one stage of the game the 'Wires' were commanding a 10pt. to 2 lead, but in the second half Rochdale pulled out all the stops and finished up winners by 18 points to 10.

Chamberlain at full-back is at present deputising for the injured Pritchard. On the flanks both Mike Ratu and Tony Pratt are dangerous when given any room at all in which to work. Centres Mick Crocker and Malcolm Price are both favourites at the Athletic Grounds, turning in some sound forceful displays.

Graham Starkey takes over the No. 6 spot and Syd Miller will be Starkey's partner in tonight's line-up.

Ex-Blackpool prop Ken Payne, hooker Kevin Ashcroft, and Stan Owen form a very strong front row and behind them Ken Parr and Api Toga are both strong runners and need some holding. Owen's ball distribution comes in hand here. Last man down is ex-Oldham player Johnny Noon.

**BE ON THE**

**BALL WITH A**

**GOOD COMPANY**



VISIT or PHONE (MAI 0461) THE PERSONNEL DEPT.



# F. D. WHITEHEAD BUILDING SERVICES LTD.

SPECIALISTS IN THE  
DESIGN AND BUILDING OF LICENSED CLUBS

Tel. MAIN 9737 NORDENS DRIVE, CHADDERTON

All in all they have a strong side out this evening, and a good game is anticipated. May the best side win.

## CLUB VIEWS

As I have outlined in the 'Welcome Rochdale' notes we are going to have our work cut out to contain a strong 'Hornets' side this evening. They beat us in the pre-season Charity match at Rochdale and will be hoping to prove that this victory was no fluke.

Our victory at Liverpool was seen by a very poor crowd of just 500 people. One cannot understand how a club like Liverpool manages to keep on its feet. However, there is a lot of enthusiasm at Knotty Ash, and they always try and play attractive football even when they are losing. On Saturday they could quite easily have given us a surprise. They got an early try by their winger Losh and then they gave us a hectic 20 minutes or so until their line broke when hooker Kevin Taylor went through from a play-the-ball. From this we got on top and in the end won by 19 points to 15. Their score was made a little more respectable with a glorious copybook try by their new centre Mort near the end.

Tom Warburton undoubtedly was the man of the match but he took a great deal of punishment, but he was still on the field at the end despite an injured shoulder.

The Christmas draw tickets will shortly be on sale and we are still seeking a few more young ladies who are willing to help us with the selling of these tickets on match days. If you are a young lady and interested in helping us in this respect please contact the Secretary at the Pavilion.

FOR THE BEST . . .

Tripe, Heels, Elder, Trotters & Dripping

**H. HEGINBOTTOM**

AND SONS

BROADWAY STREET : OLDHAM

New Laid Eggs FROM OUR OWN FARM and  
Roasting Chickens obtainable at all our Branches

TELEPHONE MAI. 3551 & 7413  
FOR YOUR REQUIREMENTS

104 Union Street West  
49 Manchester Street  
136 King Street  
3a Glodwick Road  
152 Egerton St., Tommyfield  
Market, Oldham  
Shops 20 and 23  
18 Henrietta Street,  
Ashton-u-Lyne and  
Stamford Street, Mossley

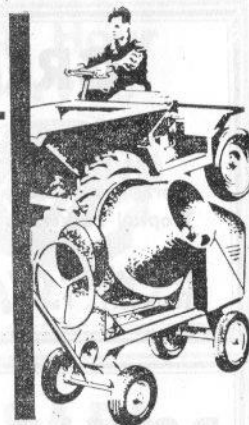
# BUILDING MATERIALS PLANT HIRE

## ROBERT WOOD

(BUILDERS'  
MERCHANTS) LTD

BELL STREET  
OLDHAM

Main 5016/7 and 7763



## CHARITY MATCH

A team selected from the 1966 tourists will be playing a Rest of the League team at Headingley on Sunday, 6th November, 1966, k.o. 3 p.m. This match is in aid of the St. John's Ambulance Brigade. The teams will be as follows:—

**Touring Team.**—Keegan, A. (Hull); Burgess, W. (Barrow), Myler, F. (Widnes), Brooke, I. (Bradford N.), Wriglesworth, G. (Leeds); Hardisty, A. (Castleford), Bishop, T. (St. Helens); Roberts, K. (Halifax), Flanagan, P. (Hull K.R.), Watson, C. (St. Helens), Poole, H. (Leeds), Bryant, W. (Castleford), Robinson, D. (Swinton).

**Substitutes:** Aspinall, W. (Warrington). Fogerty T. (Halifax).

**Rest of League.**—Risman, A. B. W. (Leeds); Van Vollenhoven, K. T. (St. Helens), Stephens, D. C. S. (Wigan), Hagan, R. J. (Huddersfield), Killeen, L. M. A. (St. Helens); Shobottom, M. (Leeds), Williams, G. (Swinton); Halsall, A. (St. Helens), Mullins, P. (Bradford N.), Scroby, J. (Halifax), Irving, R. A. (Oldham), Ramshaw, T. (Halifax), Parker, G. D. (Oldham).

**Substitutes:** Millward, R. (Hull K.R.). Toga, A. (Rochdale).

As a novelty the Rugby League are hoping to arrange as a curtain raiser a game played between former players. Any former player who is no longer on the Register of a club, no matter what his age, is eligible to play in this game. Those wishing to take part should write to the Rugby League Secretary, 180 Chapeltown Road, Leeds 7. This curtain-raiser will not be a hard slogging match, but will simply be an opportunity for old players to handle the ball again and appear once

## ST DOMINGO MOTORS

OLDHAM

MAIN LAMBRETTA DEALER

Where you can See, Try and Buy the World's Finest Scooter

## LAMBRETTA

All Models from Stock

Immediate H.P. Terms

Free Tuition to Learners

SPARES AND ACCESSORIES

Telephone MAI 4185

OPPOSITE THE NEW CIVIC CENTRE

# GREENWOOD'S BUILDING INDUSTRIES LTD.

Storage . Casemakers . Packers . Shippers  
Tropical Packers . Transport Contractors

We Welcome your Enquiries for:  
Transport, Packing, Casemaking and Storage

**SALEM WORKS**  
**LEES ROAD**  
**OLDHAM**  
Tel.: MAIn 5436 (4 lines)

We are proud to have been your  
**Floodlighting Contractor**  
ELECTRICAL SPECIALISTS  
CONSULTANTS  
HEATING - LIGHTING - POWER

**Butterworth's**  
**SHAW**

**24 Hour**  
**Service**



**SHAW 7773**

## ROYALE MOTORS

(CAR SALES) LIMITED

**ROOTES Dealers**

**BOTTOM O'TH MOOR**  
**OLDHAM**

AGENTS for...

**Humber**  
**Hillman**  
**Sunbeam**  
**Singer**  
**Commer**

IMMEDIATE ARRANGEMENTS FOR  
HIRE PURCHASE & INSURANCE

MAI - 3147

MAI - 4187

**OLDHAM**  
(All White)

(selected from)

McLEOD, S. ✓

DOLLY, T. ✓

McCORMACK, J. ✓

HOLROYD, P. ✓

SIMMS, G. ✓

WARBURTON, T. ✓

CANNING, T. ✓

MUMBERSON, A. ✓

TAYLOR, K. ✓

WOOD, G. ✓

FLETCHER, G. ✓

WILSON, K. ✓

SMETHURST, P. ✓

OGDEN, A. ✓

IRVING, R. A. ✓

MOONEY, M. ✓

Referee:

G. T. SCHOLEFIELD  
(Salford)

THE

**G**  
**R**  
**E**  
**E**  
**N**  
**A**  
**L**

FOR  
ALL  
LOCAL  
SPORT

**7 ROCHDALE H.**

(Red, White and Blue)

1—CHAMBERLAIN, J.

2—RATU, M.

3—CROCKER, J.

4—PRICE, M.

5—PRATT, A.

6—STARKEY, G. ✓

7—MILLER, S.

8—PAYNE, K.

9—ASHCROFT K.

10—OWEN, S. ✓

11—PARR, K.

12—TOGA, A.

13—NOON, J.

Substitutes:

14—FISHWICK, J.

15—BROWN, D.

Touch Judges:

J. MEADOWS (Liverpool)  
(Yellow Flag)

J. P. DAWSON (St. Helens)  
(Crimson Flag)

## FOR SAFE INVESTMENT

**Regular Savings**  
10/- to £15 a month

**4½%**

**Equal to**  
**7½%**

**Share Account**  
any sum up to £5,000

**4%**

**6½%**

**Reserves**

approximately 6½% of assets

With  
Tax Paid  
by Society

With Tax  
at 8/3d.  
in £

The Society has Excellent Mortgage  
Facilities Available

**LANCASHIRE**  
**BUILDING SOCIETY**

(formerly House and Mill Building Society)

**127 UNION STREET, OLDHAM**

Telephone MAIn 4474

Member of the Building Societies' Association

SHARES AND DEPOSITS IN THIS SOCIETY ARE  
TRUSTEE INVESTMENTS

## BUYING A CAR ?

For the Best Selection of Used Cars or any make  
of New Car . . . VISIT

**WESTHILL MOTORS**

(OLDHAM) LTD.

MIDDLETON ROAD : OLDHAM

Telephones : MAIn 6370 and Medlock Head 1616

AND AT THE

**OLDHAM USED CAR SHOW**

Agents for ROVER, SINGER, LAND ROVER  
STANDARD-TRIUMPH

Three Months' Guarantee with Used Cars  
Hire Purchase and Insurance Arrangements

TEL. : BLA 6985

**H. C. COOKES**

(SPORTS) LTD.

**26 JOHN DALTON ST.**

Rugby Jerseys, Shorts, Stockings,  
Over 36 Patterns of Rugby Boots :  
Fosters, Walsh, Reebok, Elmer Cotton,  
Winit, Lawrence, etc.

**COOKES OF MANCHESTER**

Suppliers of many leading Rugby Clubs  
also at 109 DEANS\_GATE, MANCHESTER

Tel. : BLA 7312

**ARTHUR GOSS**

AND SON

"The Man's Shop"

For Men's Wear of Quality

SUITS, RAINCOATS, HATS & CAPS  
SHIRTS, PYJAMAS, TIES & SOCKS, etc.

**RHODES BANK : OLDHAM**

Telephone : MAIn 2086

TELEPHONE : ASHton 2310

**R. BOARDMAN & CO.**  
LIMITED

ALE AND STOUT BOTTLERS  
WINE AND SPIRIT MERCHANTS  
MINERAL WATER MANUFACTURERS

**ASHTON-UNDER-LYNE**





## "GOLD STAR" KEG BITTER

"Bitter Beer at its Best"



Brewed by **GROVES & WHITNALL LTD., Salford**

(MEMBERS OF THE GREENALL WHITLEY GROUP)

again before the public. A similar event was arranged in Paris for French players and was very much enjoyed by the crowd. There were loud cheers when a sixty-year-old scored a try. Actually, the handling in this particular match was very good indeed and I have no doubt that some of our old players can still demonstrate their handling ability although their legs might not be carrying them across the ground quite so quickly.

### CONGRATULATIONS TOM!

We extend our congratulations to Tom Warburton on being voted 'man of the match' by B.B.C. viewers at our Floodlit game against Barrow last Tuesday week.

Tom received his £10-10-0 prize from B.B.C. commentator Eddie Waring at half-time in the Leeds v. Castleford match at Headingley last Tuesday.

Our players will have another chance to win this cash prize at the Widnes match on November 22nd.

## NEXT MATCH AT WATERSHEDDINGS

SATURDAY, OCTOBER 29th, 1966

Kick-off 3.0 p.m.

**OLDHAM v LEIGH**

For Finest Wines and Spirits

*Yates's Wine Lodges*

6 High Street OLDHAM

Telephone MAIn 4933

SAVE CASH at

## ALPINE GARAGE (Oldham) LTD.

HOLLINS ROAD :: OLDHAM

Phone: MAIn 2022

FOR LOWEST PRICE PETROLS

CONSULT US FOR TYRES

REMOULDS FROM £2.10.0

### Meet the Players — No. 7

#### GEOFFREY FLETCHER

After two Oldham officials had watched Geoff Fletcher at Bradford playing for Leigh at the beginning of last season he was signed by the Oldham Club.

Since then Geoff has had his ups and downs but at present he is playing some terrific football. After being 'got at' by several Oldham supporters during his lean spell last season, he is now a firm favourite with everyone at Watersheddings. Supporters and Players alike.

Geoff stands 6ft. 1ins. and weighs 15 stone. He is a pig farmer and lives in St. Helens.

Rugby comes first in Geoff's life although he is also a keen boxer. Geoff also professes to be a "fair" tennis player.

As an amateur, Geoff played for Lancashire and also England Under-19's. His present age is 22.

(Photograph by courtesy of Oldham Chronicle)



ESTABLISHED 1864

## S. Hawley & Co. Ltd.

WHOLESALE TOBACCO, CIGARETTE  
AND CIGAR MERCHANTS

PLEASE NOTE ONLY ADDRESS

Office and Warehouse:

**90 PITT STREET :: OLDHAM**

Telephone No. MAIn 1010



## HERBERT JONES

★  
PLUMBING CONTRACTOR  
PROPERTY REPAIRS  
Small Bore Heating Specialist

★  
**155 Huddersfield Road  
OLDHAM**

Phones : MAI 1710 - 3118

## EDGAR BROOKS

(former Oldham & England hooker)

HIGH - CLASS  
PAINTER and DECORATOR

PRIVATE or INDUSTRIAL  
For a really first class job ring

**MAI 6751**

or write to :  
**114 HAVEN LANE, MOORSIDE  
OLDHAM**

## For All Classes of Insurance Whitehead & Lees (Insurances) Ltd.

INCORPORATED INSURANCE BROKERS

**34 UNION STREET  
OLDHAM**

TELEPHONE : MED 2361

### FIXTURES FOR 1966 - 67

#### First Team

Date 1966	Opponents	Venue	Result	Date 1967	Opponents	Venue	Result
Aug. 20 (S)	Hull	Away	W 24-12	Jan. 7 (S)	Wigan	Away	
" 23 (Tu)	Blackpool Borough	Home	W 40-9	" 14 (S)	Barrow	Away	
" 27 (S)	Hull	Home	W 20-7	" 21 (S)	Salford	Home	
Sept. 2 (F)	Swinton	Home	W 16-13	" 27 (F)	St. Helens	Away	
" 10 (S)	(Lancs. Cup 1st Rd.)			Feb. 4 (S)	(1)		
" 12 (S)	Salford	Away	L 13-15	" 11 (S)	Workington T.	Home	
" 14 (S)	Salford	Away	W 7-2	" 18 (S)	St. Helens	Home	
" 16 (S)	(Lancs. Cup 2nd Rd.)			" 25 (S)	(2)		
" 17 (M)	Blackpool B.	Away	W 22-4	Mar. 3 (F)	Widnes	Away	
" 17 (S)	Whitehaven	Home	W 37-9	" 11 (S)	Huddersfield	Home	
" 24 (S)	Halifax	Away	L 15-23	" 24 (F)	Swinton	Away	
" 30 (F)	Wigan	Home	L 15-16	" 25 (S)	Widnes	Home	
Oct. 8 (S)	Liverpool C.	Away	W 19-15	" 27 (M)	Halifax	Home	
" 14 (F)	Rochdale H.	Home	W 12-7				
" 22 (S)	Whitehaven	Away					
" 29 (S)	Leigh	Home					
Nov. 5 (S)	Leeds	Away					
" 11 (F)	Liverpool C.	Home					
" 18 (F)	Warrington	Away					
" 26 (S)	Leeds	Home					
Dec. 3 (S)	Workington T.	Away					
" 10 (S)	Barrow	Home					
" 14 (W)	Leigh	Away					
" 24 (S)	Huddersfield	Away					
" 26 (M)	Swinton	Home					
" 27 (Tu)	Rochdale H.	Away					
" 31 (S)	Warrington	Home					

## Courtaulds Limited Spinning Division

### THE NEW YARN SPINNING INDUSTRY

offers interesting, well-paid employment to young men and women. Enquire at our Employment Centre, 29 Manchester Street, Oldham (opposite the Ministry of Labour), between 10.30 a.m. and 6.0 p.m., Monday to Friday.

#### SKILLS WILL BE TAUGHT

in our modern Specialised Operative Training Centre in Shaw for work as machine operators in our mills in Oldham and District.

## SCHOFIELDS

Since 1823

THE SPORTS SPECIALISTS

Suppliers to Oldham Rugby Football Club

**16-18-20 GEORGE STREET, OLDHAM**



### unbeatable coverage RUGBY LEAGUER

For all the latest news, views, pictures and fact reports. Get your copy of the "Rugby Leaguer" every week.

On sale at all newsagents or write to :  
**SOUTH LANCASHIRE NEWSPAPERS LTD.**  
164 COLLEGE STREET, ST. HELENS

**6<sup>p</sup>**  
every Friday