

*If you wish to back
your fancy...*

Ring Up

TED KENNY

Commission Agent

SWINTON HALL ROAD
SWINTON - - MANCHESTER

Telephones :

SWinton 1822 and SWinton 2336

Horses:Football:Greyhounds

MOSS LANE - SWINTON
LITTLE MOSS LAIE - PENDLEBURY
BRIDGE STREET - PENDLEBURY
MANCHESTER ROAD - WALKDEN
CECIL STREET - WALKDEN

Printed by John Roberts & Sons, 168 Chapel Street, Baldock, H.

LANCASHIRE COUNTY RUGBY LEAGUE

Challenge
Cup

FINAL



OLDHAM

versus

WIGAN

On Swinton R.F.C. Ground, Station Road, Swinton
nr. Manchester

SATURDAY, 29th OCTOBER, 1966

KICK-OFF 3 p.m.

OFFICIAL PROGRAMME - ONE SHILLING

TRY OUR NEW FULLY LICENSED BAR

(Behind the Main Stand)

LARGE SELECTION OF
MAGEES and GREENALLS
BOTTLED BEERS . ETC.

GOLD STAR KEG BITTER

How they reached the Final

FIRST ROUND

Oldham	5-2-16	Swinton	5-1-13
Widnes	4-6-26	Barrow	2-3-13
Leigh	2-0-4	Wigan	3-4-18
Rochdale H.	5-2-16	St. Helens.....	3-4-18
Warrington	7-5-29	Liverpool C.	3-2-12
Whitehaven	1-0-2	Blackpool B.	1-1-5
Workington T. ...	0-3-9	Salford	4-3-17

SECOND ROUND

Wigan	4-1-11	St. Helens.....	3-1-9
Blackpool B.	5-3-19	Widnes	2-1-7
Salford	1-0-2	Oldham.....	2-1-7

SEMI-FINAL

Blackpool B.	1-1-5	Oldham.....	3-3-15
Wigan	5-2-16	Warrington.....	2-1-7

LANCASHIRE COUNTY RUGBY LEAGUE

CHALLENGE CUP — FINAL, 1966

OLDHAM versus WIGAN

Today the Swinton Club is privileged to stage the fifty-fourth Final of the Lancashire County Challenge Cup. This will be the fifteenth Final of the Competition to be played at Station Road.

This is the fourth occasion on which Oldham and Wigan have contested the Final of the County Challenge Cup. Oldham winning in 1913 and 1957, and Wigan in 1908.

When the teams played here in 1957 new record receipts were established for the Competition amounting to £6,918.

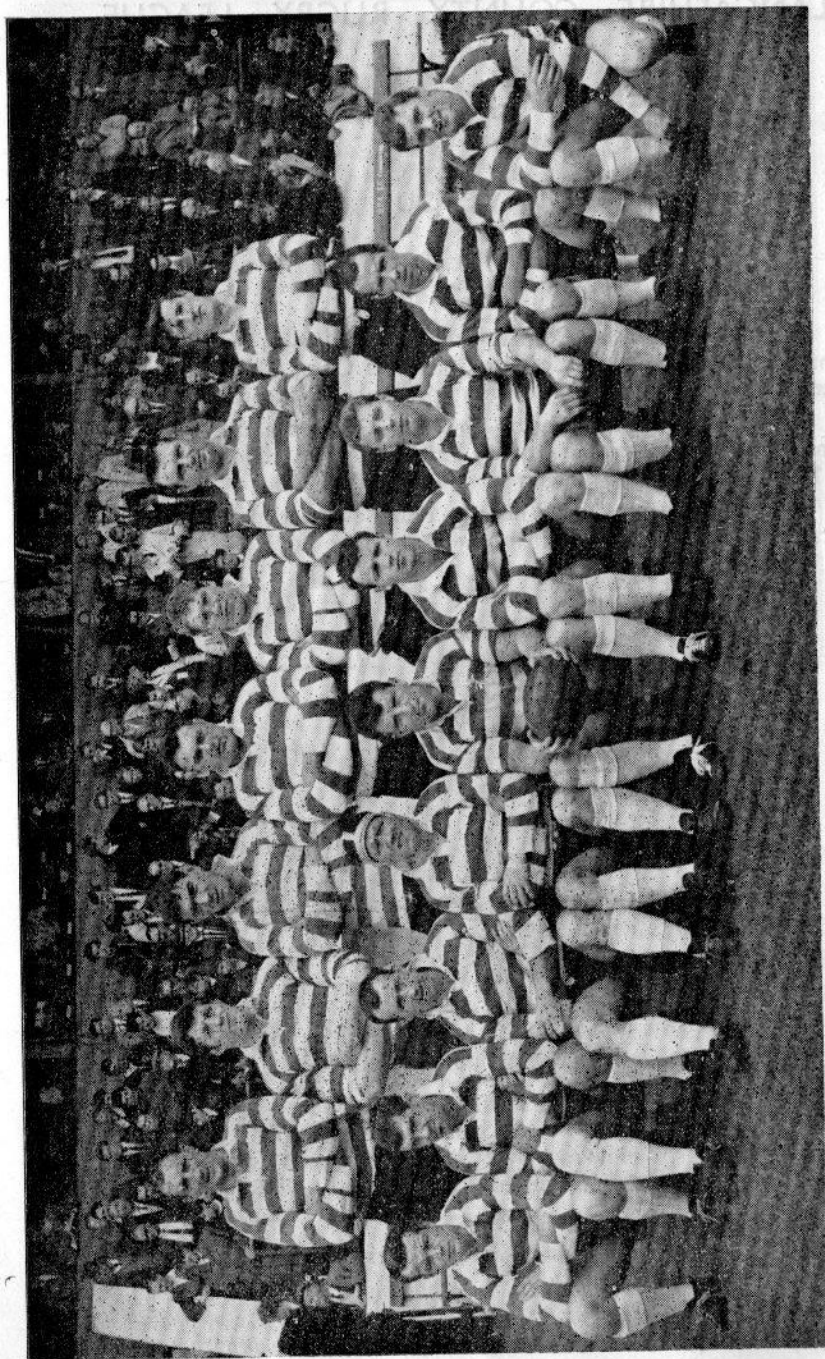


President of Lancashire County Rugby League
Mr. W. A. Williams (Salford)

The Lancashire President will be remembered by many local followers as a member of the Salford "Red Devils" side of the nineteen-thirties. He won International honours for Wales and played in Test match football both in England and Australia.

Acknowledgments

Thanks are extended to the Lancashire Evening Post and Chronicle and the Oldham Evening Chronicle for the use of photographs and for assistance in the compilation of the programme.



OLDHAM R.L.F.C.—1966-67 Season

Standing (left to right)—Fletcher, Irving, Wilson, Mumberson, Mooney, Bott, Donovan,
Seated (left to right)—Warburton, Curry, Dolly, Simms, Smethurst, McCormack, Taylor, McLeod, Canning.

THE FINALISTS

OLDHAM

The Oldham Club was formed in 1873 and, in addition to being one of the founder members of the Northern Union in 1895, they also provided the first Secretary of the Northern Union in Mr. Joseph Platt.

Although Oldham have won the Rugby League Challenge Cup on three occasions and been runners-up four times they have never played in a final at Wembley. Even during their successful years in the mid nineteen-fifties, when they won the Northern League Championship, the Lancashire Rugby League Championship (twice) and the Lancashire Challenge Cup on three successive occasions they failed to reach the final of the Rugby League Challenge Cup.

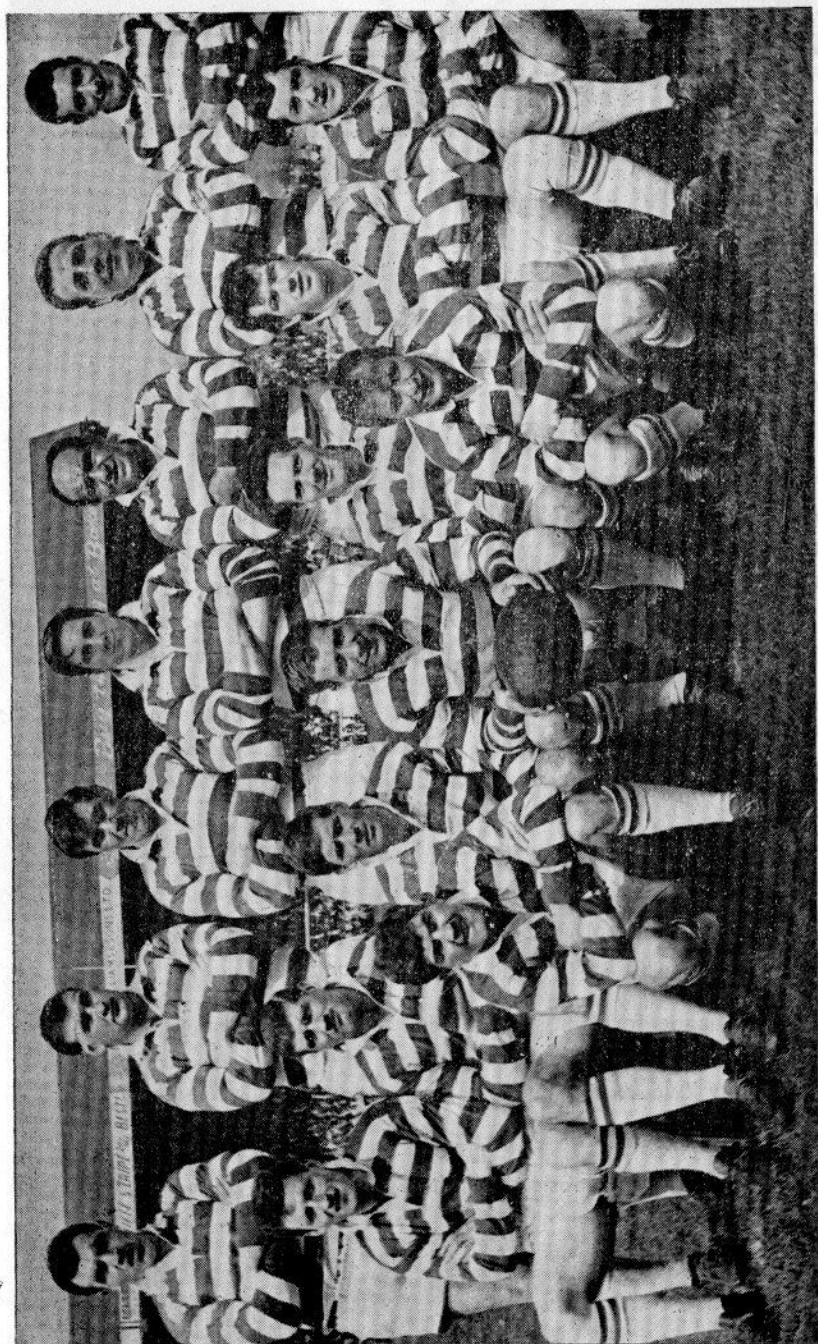
No doubt Oldham supporters recall the nearest their team has been to reaching Wembley, when in 1964, their replayed semi-final at Swinton was stopped by bad light during extra time, when they were leading. In the second replay Hull Kingston Rovers defeated them to provide a result which must have caused many arguments since.

This is their fifteenth appearance in the County Challenge Cup Final, and they have been winners on nine occasions.

Their League form this season has been rather inconsistent, but it is obvious from their record that they have an excellent defence, only two clubs having conceded fewer points in League games.

At present in ninth position Oldham have the following record:

Played	Won	Drawn	Lost	For	Against	Points
11	7	0	4	217	129	14



WIGAN R.L.F.C.—1966-67 Season

Back Row (left to right)—Gillfedder, Gardiner, Lyon, J. Stephens, Boston, Holden, A. Stephens.
Seated (left to right)—Hesketh, D. Stephens, Lake, Ashton, Ashby, Clarke, Major.
Kneeling—Hill, Parr.

WIGAN

This afternoon Wigan are making their twenty-fifth appearance in the Final. They have won this trophy thirteen times including a run of six successive victories from 1946 to 1951. Since then, however, they have been finalists on only two occasions and were defeated each time. In 1953 when they lost to St. Helens, and in 1957 when Oldham were the winners.

The Wigan Club have an honours list which is second to none and probably the envy of all the other clubs in the game. They have been Challenge Cup winners seven times, and have made eleven appearances at Wembley. They have been League Champions on nine occasions, and have won the Lancashire League on seventeen occasions.

This season they have made what must be their worst start to a League programme for many years, and at present they are in nineteenth position.

Their League record shows that they have conceded 236 points, only 66 fewer than were scored against them in the whole of last seasons' League games.

Wigan's League details are as follows:

Played	Won	Drawn	Lost	For	Against	Points
13	6	0	7	195	236	12

Lancashire County Rugby Football Challenge Cup Final

OLDHAM 13

(White Jerseys, Navy Pants)

1. S. McLEOD Full Back
2. T. G. DOLLY Right Wing Three-Quarter
3. J. J. McCORMACK Right Centre Three-Quarter
4. J. DONOVAN *1 TRY* Left Centre Three-Quarter
5. T. SIMMS Left Wing Three-Quarter
6. T. WARBURTON *5 GOALS* Stand-Off Half
7. T. CANNING Scrum Half
8. K. J. WILSON Prop Forward
9. K. TAYLOR Hooker
10. G. FLETCHER Prop Forward
11. P. SMETHURST Second Row Forward
12. R. A. IRVING Second Row Forward
13. M. MOONEY Loose Forward
14. P. HOLROYD Substitute
15. A. OGDEN Substitute

Referee: Mr. P. GERAGHTY, of York

Play—40 minutes each half

In the event of a drawn game at the end of eighty minutes' play the match will be replayed at Salford next Thursday, November 3rd, 1966, kick-off at 7-30 p.m.

PRESENTATION. At the conclusion of the match Mrs. Williams will present the Trophy to the Captain of the winning side, and Medals to both teams.

WIGAN 16

(Blue Jerseys, White Pants)

1. R. ASHBY Full Back
2. W. J. BOSTON *1 TRY* Right Wing Three-Quarter
3. E. ASHTON *2 TRYS* Right Centre Three-Quarter
4. K. HOLDEN Left Centre Three-Quarter
5. T. A. LAKE Left Wing Three-Quarter
6. C. HILL Stand-Off Half
7. F. PARR Scrum Half
8. R. B. GARDINER Prop Forward
9. C. CLARKE *1 TRY* Hooker
10. J. R. STEPHENS Prop Forward
11. L. GILFEDDER *1 TRY 2 GOALS* Second Row Forward
12. G. LYON Second Row Forward
13. H. MAJOR Loose Forward
14. D. STEPHENS Substitute
15. A. STEPHENS Substitute

Touch Judges:

Mr. R. J. Percival (Maroon); Mr. G. T. Scholefield (Tangerine)

Interval—3-40 to 3-45 p.m.

The Barton Hall Band will play prior to the match and during the half-time interval.

INTRODUCING OLDHAM

BRIAN CURRY. Oldham's most expensive buy for several seasons when bought for £5,000 from Huddersfield just prior to the start of the current season. Last season he was one of the game's leading goalkickers but has had a poor time of things since moving to Watersheddings . . . particularly with injuries.

TERRY DOLLY. Signed from Yorkshire R.U. circles last season Dolly has come into the reckoning for a regular first-team place, this year. His best performance to date was a hat-trick of tries in Oldham's runaway win against Whitehaven.

JIM McCORMACK. An ex-Wigan player and one of Oldham's most consistent performers. Strong in the tackle, few centres get the better of McCormack's cover defence which is usually immaculate.

PETER HOLROYD. A 22 year old centre with only three senior games behind him since signing from Huddersfield junior club Moldgreen a few weeks ago.

STAN McLEOD. Another ex-Central Park player, bought by Oldham as a stand-off but capable of playing in most of the threequarter positions. Has recently been playing full back in Curry's absence and is the only Oldham player to have appeared at Wembley.

JOHN DONOVAN. A native of St. Helens, Donovan joined Oldham in a player-exchange deal which took Peter Goddard to Knowsley Road. Another consistent performer, Donovan is the only Oldham player to already possess a County cup winners' medal. Injury may keep him out of the side today.

TREVOR SIMMS. A fast, strong-finishing winger with several Lancashire appearances behind him. Like Donovan, he joined Oldham after experience at St. Helens although he had a stay at Rochdale before finally moving to Watersheddings. One of the few scrum-capped threequarters in the game.

TOM Warburton. Rated by many as the most exciting young stand-off prospect in the game. Another player from the Leigh area, Tom won ten guineas after being voted man-of-the-match by B.B.C.-T.V. viewers when Oldham played Barrow in the floodlight competition a fortnight ago.

TOM CANNING. Another ex-Union player who joined Oldham from Vulcan, the Newton-le-Willows works team. Tom is in his second full season of Rugby League and has struck up a fine understanding with out-half Warburton.

KEN WILSON. Former England Rugby Union forward who has been at Watersheddings for several seasons. Wilson is playing at the peak of his form at present and has recently attracted attention from other culbs, including Wakefield and Leigh.

KEVIN TAYLOR. A 20-year-old hooker and product of local junior football. Taylor's strength lies in his non-stop support work in the loose which earned him an Under-24 cap against France last season.

GEOFF FLETCHER. A St. Helens pig farmer who joined Oldham two years ago from Leigh—as loose forward! Fletcher has found his true position this year on the blind-side of the front row and plays a big part in the distribution which his pack colleagues rely on.

PETER SMETHURST. One of the most loyal clubmen in the game, Smethurst shocked Oldham recently by saying he would quit if the experimental play-back rule were introduced. A player without honours but one who is generally accepted as one of the hardest-working forwards in the game.

BOB IRVING. Another Oldham danger man, Irving has tremendous finishing powers. Although only 18, he is an exciting forward prospect and tipped by many as a "cert" for this season's England Under-24 side.

MICK MOONEY. Former Blackpool player who began his career at St. Helens. Mooney has made the loose-forward job his own while international Dave Parker has been out through injury

INTRODUCING WIGAN

RAY ASHBY (full back). Started his R.L. career with the St. Helens junior club, Blackbrook, and after a spell with his home town club joined Liverpool City. A season after gaining his first International cap against France, Wigan signed him for £3,500.

BILL BOSTON (right wing three-quarter). One of Rugby League's greatest-ever players he joined Wigan in 1953. After only six R.L. games he toured Australia and New Zealand with the British R.L. tourists and began his record scoring feats which have yielded him nearly 600 tries.

ERIC ASHTON (right centre-threequarter). Captain-coach of the present Wigan team. Before "retiring" from Test rugby on his Wigan coaching appointment had gained 45 Test and International appearances. Captained the 1962 touring party and has skippered Wigan at Wembley six times. Received M.B.E. this year.

KEITH HOLDEN (left centre threequarter). Joined Leigh at 16 but Wigan bought him for £6,000 a few years later and gained his first Wembley award with them. Transferred to Oldham, then Warrington, but was bought back by Wigan again for £3,000.

TREVOR LAKE (left wing threequarter). Followed his countryman, John Winton, to Central Park over four years ago. Shared top-try-scoring award with Killeen last season; was top previous year.

CLIFF HILL (stand-off half). Joined Wigan's summer coaching school in 1962, but later joined Newton-le-Willows R.U. club. Wigan "re-discovered" him playing in a Leigh amateur R.L. medal competition for a Newton team called "Nomads".

FRANK PARR (scrum half). Signed by Wigan from a Leigh junior R.L. club on his 16th birthday.

DANNY GARDINER (open side prop). Joined Workington where he first played in the front row. Wigan bought him just before their 1965 R.L. Cup run to Wembley.

COLIN CLARKE (hooker). The only Wigan player in this year's British R.L. touring party, although there are seven other international players in Wigan's Lancashire Cup Final team. Was signed from Orrell R.U. club Colts team.

JOHN STEPHENS (blind side prop). A product of Widnes amateur R.L. football along with his cousin, Tony Stephens, who is substitute forward for the final.

GEOFF LYON (second row forward). Another product of Orrell R.U. club, from which club his younger brother, Eric, last year gained Lancashire R.U. honours and England trial.

LAURIE GILFEDDER (second row). Joined Warrington as a centre. He later claimed a forward spot, touring Australasia in 1962. The only member of the present Wigan team to already hold a Lancashire Cup Winners' medal, gained with the "Wires". Joined Wigan in 1963 for £8,000 and was usually loose forward.

HARRY MAJOR (loose forward). Came in early prominence with Warrington along with Gilfedder and they formed the Wires second row in their championship final clash in 1961. Was transferred to Wigan for £4,000 last year.

RESULTS OF PREVIOUS FINALS

Date	Finalists and Score	Venue
1905.	Wigan beat Leigh 8-0 (after a 0-0 draw at Wigan)	Broughton
1906.	Broughton Rangers beat Warrington 15-6	Wigan
1907.	Oldham beat Broughton Rangers 16-9	Rochdale
1908.	Wigan beat Oldham 10-9	Broughton
1909.	Wigan beat Leigh 22-5	Broughton
1910.	Oldham beat Swinton 4-3	Broughton
1911.	Rochdale Hornets beat Oldham 12-5	Broughton
1912.	Wigan beat Rochdale Hornets 21-5	Salford
1913.	Oldham beat Wigan 5-0	Broughton
1914.	Rochdale Hornets beat Wigan 3-2	Broughton
1915-16, 1916-17, 1917-18	No Cup Competition.	
1919.	May 10—Rochdale Hornets beat Oldham 22-0 ... Dec. 6—Oldham beat Rochdale Hornets 7-0	Salford Salford
1920.	Broughton Rangers beat Leigh 6-3	Salford
1921.	Warrington beat Oldham 7-5	Broughton
1922.	Wigan beat Leigh 20-2	Salford
1923.	St. Helens Recs. beat Swinton 17-0	Wigan
1924.	Oldham beat St. Helens Recs. 10-0	Salford
1925.	Swinton beat Wigan 15-11	Broughton
1926.	St. Helens beat St. Helens Recs. 10-2	Warrington
1927.	Swinton beat Wigan 5-2	Oldham
1928.	Wigan beat Widnes 5-4	Warrington
1929.	Warrington beat Salford 15-2	Wigan
1930.	St. Helens Recs. beat Wigan 18-3	Swinton
1931.	Salford beat Swinton 10-8	Broughton
1932.	Warrington beat St. Helens 10-9	Wigan
1933.	Oldham beat St. Helens Recs. 12-0	Swinton
1934.	Salford beat Wigan 21-12	Swinton
1935.	Salford beat Wigan 15-7	Warrington
1936.	Salford beat Wigan 5-2	Warrington
1937.	Warrington beat Barrow 8-4	Wigan
1938.	Wigan beat Salford 10-7	Swinton
1940.	First Leg: Swinton beat Widnes 5-4 Second Leg: Swinton beat Widnes 16-11	Widnes Swinton
	(Swinton won Cup on aggregate 21-15)	
1940-41, 1941-42, 1942-43, 1943-44, 1944-45	No Cup Competition.	
1945.	Widnes beat Wigan 7-3	Warrington
1946.	Wigan beat Belle Vue Rangers 9-3	Swinton
1947.	Wigan beat Belle Vue Rangers 10-7	Warrington
1948.	Wigan beat Warrington 14-8	Swinton
1949.	Wigan beat Leigh 20-7	Warrington
1950.	Wigan beat Warrington 28-5	Swinton
1951.	Wigan beat Leigh 14-6	Swinton
1952.	Leigh beat St. Helens 22-5	Swinton
1953.	St. Helens beat Wigan 16-8	Swinton
1954.	Barrow beat Oldham 12-2	Swinton
1955.	Leigh beat Widnes 26-9	Wigan
1956.	Oldham beat St. Helens 10-3	Wigan
1957.	Oldham beat Wigan 13-8	Swinton
1958.	Oldham beat St. Helens 12-2	Swinton
1959.	Warrington beat St. Helens 5-4	Wigan
1960.	St. Helens beat Swinton 15-9	Wigan
1961.	St. Helens beat Swinton 25-9	Wigan
1962.	St. Helens beat Swinton 7-4	Wigan
1963.	St. Helens beat Leigh 15-4	Swinton
1964.	St. Helens beat Swinton 12-4	Wigan
1965.	Warrington beat Rochdale Hornets 16-5	St. Helens

LANCASHIRE COUNTY RUGBY LEAGUE

President:

Mr. W. A. WILLIAMS (Salford).

Vice-President:

Mr. W. WHITTAKER (Liverpool City)

Hon. Secretary and Treasurer:

Mr. F. DEVONALD

Committee:

Mr. J. BOWDLER (Rochdale Hornets)

Mr. A. H. CATTERALL (Warrington)

Mr. F. C. DROMGOOLE (St. Helens)

Mr. H. T. GOSTELOW (Wigan)

Mr. W. HOWARD (Oldham)

Mr. W. JOHNSON (Widnes)

Mr. D. G. JONES (Swinton)

Mr. W. B. OXLEY (Barrow)

Mr. A. J. RICHARDSON (Blackpool Borough)

Major J. RUBIN (Leigh)

Life Members:

Mr. R. F. ANDERTON.

Mr. F. DEVONALD

THE NORTH'S LUXURY CLUB

THE WISHING WELL CLUB Station Road, Swinton

★ ★ ★

Cabaret and Dancing

TOP LINE ENTERTAINMENT

★ ★ ★

WE BRING YOU THE STARS
OF TODAY AND TOMORROW
EVERY

WEDNESDAY, THURSDAY, FRIDAY,
SATURDAY AND SUNDAY

★ ★ ★

We have Clubland's Best Pint—

It's TETLEY'S of course

★ ★ ★

MEMBERSHIP OPEN FOR 21 AND OVER

Gentlemen £1 Ladies 10/- per year

You will wish you had been a Member sooner