

1966/7

MACKESON

Rugby League Contest

*Organised by Whitbread & Co. Ltd.
in association with The Rugby Football League*

The Mackeson Rugby League Contest Trophy and a cheque for 200 guineas goes to the team with the best scoring record for the season. Cheques for 100 guineas and 50 guineas go to the runners-up.

The Champions' Flag and inscribed silver tankards are awarded to the top scoring team in each of five periods during the season.

THE 5 PERIODS ARE:

August	6	to	September	24
September	26	to	November	19
November	21	to	January	14
January	16	to	March	11
March	13	to	April	29



OFFICIAL
OLDHAM

PROGRAMME

FREE WITH ADMISSION

OLDHAM

Rugby League Football Club



RUGBY FOOTBALL LEAGUE
Northern League Championship Match

OLDHAM

v.

HUDDERSFIELD

SATURDAY, 11th MARCH, 1967

Kick-off 3.0 p.m.

Hinchliffe Bros.

(Chemists) Ltd.

1/9 FEATHERSTALL ROAD NORTH
OLDHAM : Phone MAI 2654

Wine and Spirit Merchants

for all **FIRST AID** Supplies

INDUSTRIAL CHEMICALS, ACIDS

SOLVENTS : Acetone, Carbon Tet.,

White Spirit, Trichlorethylene, Toluol

TELEPHONE : MAIn 4301 and 9116

G. Barlow & Sons

Limited

UNION ST. WEST GARAGE

Near Royal Infirmary

OLDHAM

MOTOR-CARS AND SUPERIOR SALOON

COACHES FOR HIRE

WEDDINGS & JOURNEYS A SPECIALITY

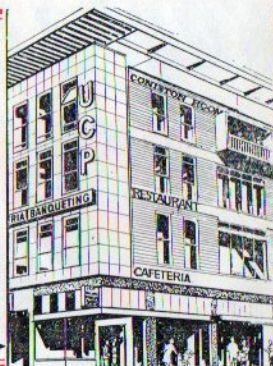
For a really good meal visit a

UCP

RESTAURANT

19 HIGH STREET, OLDHAM

When in Manchester visit the **MERCHANTS**, 92 Market St., the **MANOR**, Brown St. (Market St.), the **TUDOR**, Oxford St. (nr. Odeon) & the **PALL MALL**, Market St. →



GEORGE HILL (Oldham) LIMITED

TIMBER MERCHANTS and FORMICA DISTRIBUTORS

IMPORTED SOFTWOODS, HARDWOODS, PLYWOODS, WALLBOARDS

MOULDINGS : DOORS : DOWELS

Stockists of WEYROC and INTERWOVEN FENCING

SAWING, PLANING and MOULDING MILLS

SCOTTFIELDS SAWMILLS ASHTON ROAD, OLDHAM

Telephone : MAIn 5453/4

OLDHAM



ALES

MILD AND BITTER ON DRAUGHT

BOTTLED BEERS AND MINERALS

WINES, SPIRITS AND TOBACCO O.B. PALE ALE
AVAILABLE IN THE PAVILION

OLDHAM BREWERY COMPANY LIMITED

COLDHURST STREET :: OLDHAM

Telephones : MAIn (Oldham) 8305 & 8306

OLDHAM FOOTBALL CLUB

WATERSHEDDINGS - OLDHAM

Telephone No. 4865 (Main)

Secretary: J. STRINGER

OFFICIALS

President: H. JONES, Esq.

Acting Vice-President: A. F. CAMPBELL, Esq.

Hon. Treasurer: K. FISHER, Esq.

Committee:

Messrs. F. Buckley, J. Burke, P. G. Carter, J. Errock, W. Howard, M.B.E., J.P.,

A. Parker, T. E. Rees, R. L. Thomas, A. Wormald

CLUB VIEWS

We are now out of the Challenge Cup Competition but this does not mean that the season is over, not by any means. Our aim now is to finish in the Top Sixteen, preferably in the first eight, which would ensure a home tie for us in the Play-off. Our ambition therefore, for this season at any rate, is to bring the Championship Cup to Watersheddings.

It is not an impossible task but we shall have to have our fair share of luck if we are to be successful. The old saying is that if you are to win a Cup you must have a little luck along the line. However, luck itself will not win the trophy for us, every member of the team must give his 100 per cent. effort all the time from now until the very end of the season.

Our boys today will be out to shake off the blues of having been beaten in the Challenge Cup tournament and of the disappointing 4-4 draw at Naughton Park, Widnes, last weekend.

These notes are being compiled before Frank Dyson has named his team, and the big questions are: Has he retained young Martin Murphy at full-back or brought back the more experienced Brian Curry against his old club. Has he brought Warburton back after one 'A' team game or retained Geoff Shelton in the No. 6 spot. If Warburton is back, who has Shelton replaced in the centre? Has he brought Dave Parker back or has Fletcher been retained at loose forward?

These are some of the difficulties which are faced by the coach in this thankless job he has of selecting a team. Whichever team he has selected, however,

BE ON THE

BALL WITH A

GOOD COMPANY



VISIT or PHONE (MAI 0461) THE PERSONNEL DEPT.

F. D. WHITEHEAD BUILDING SERVICES LTD.

SPECIALISTS IN THE
DESIGN AND BUILDING OF LICENSED CLUBS

Tel. MAIN 9737 NORDENS DRIVE, CHADDERTON

we hope we shall see them return to form and get back to winning ways so we can enter the Championship play-off with confidence.

WELCOME TO HUDDERSFIELD

The Fartown side to oppose us today have, of course, strong local connections with the inclusion of two former junior players, both from Saddleworth Rangers—Jim Russell, the former Great Britain 'Under-19' captain, and 'Tiger' Finan, the local hooker, now playing well at Fartown.

It is rather an unfamiliar looking side, with many new faces lining up to oppose us. One new face is Ron Wallace, the former Gloucestershire R.U. centre, at full-back. The right flank three-quarters are Tomlinson and Russell, and the other centre is Paul Longstaff, who has made a remarkable recovery following a serious spleen injury early this season and who is equally 'at home' playing soccer.

On the left flank is Ken Senior, who returns after International duty at Wigan. Huddersfield have local man Ken Loxton working the scrum, with Gordon Blackett, the former Northumberland R.U. star, who has really made Rugby League people sit up and take notice with his great performances since the inception of the four tackle rule.

The forwards will be Heppleston and Hepworth at prop with Finan hooking, and the back three Rob Valentine, Len Mitchell, former Huddersfield Junior, and Edmonds, an Australian, at loose forward.

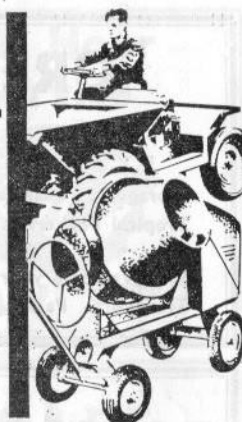
BUILDING MATERIALS PLANT HIRE

ROBERT WOOD

(BUILDERS' MERCHANTS) LTD

BELL STREET
OLDHAM

Main 5016/7 and 7763



WILLIAM WEBB

The Oldham Committee have kindly given permission for a benefit match to be played at Watersheddings tomorrow afternoon on behalf of the dependants of the late William Webb, who was a former professional player with Halifax, and previously played in the Oldham Junior Rugby League. 'Billy' was killed in a tragic sea disaster at Blackpool some months ago and the officials of the Junior League have been quick to arrange this match for his dependants.

The game will be between Waterhead and Royton, the kick-off is at 2.30 p.m. Mr. R. L. Thomas will take charge of the game.

Players taking in the game include: Baker (Huddersfield), Bowden, Clayton (Blackpool Borough), Crocker, Noon, Robinson and Payne (Rochdale), Fogerty (Wigan) and the Oldham coach, Frank Dyson.

We hope you will turn up for this game and support this worthy cause. Admission is by programme, price 2/-.

TODAY'S COLLECTION

The collection being taken today is for the Oldham Schools Rugby League funds. The Schools organisation rely on collections such as these to enable them to continue with their games. For instance, some weeks ago the Schools team had to travel to Barrow in the English Schools Cup 1st Round, and of course, these trips have to be paid for and this doesn't only include coach travel, but also refreshments which have to be supplied for the boys.

Fortunately, following their success at Barrow they are at home in the next round. We hope to give you details of this over the loud speaker system this afternoon. However, in the meantime, please given generously to the Oldham Schools Rugby League . . . they deserve it for their enterprise.

FOR THE BEST . . .

Tripe, Heels, Elder, Trotters & Dripping

H. HEGINBOTTOM

AND SONS

BROADWAY STREET : OLDHAM

New Laid Eggs FROM OUR OWN FARM and
Roasting Chickens obtainable at all our Branches

TELEPHONE MAI. 3551 & 7413
FOR YOUR REQUIREMENTS

104 Union Street West
49 Manchester Street
136 King Street
3a Glodwick Road
152 Egerton St., Tommyfield
Market, Oldham
Shops 20 and 23
18 Henrietta Street,
Ashton-u-Lyne and
Stamford Street, Mossley

ST DOMINGO MOTORS

OLDHAM

MAIN LAMBRETTA DEALER

Where you can See, Try and Buy the World's Finest Scooter

LAMBRETTA

All Models from Stock Immediate H.P. Terms Free Tuition to Learners

SPARES AND ACCESSORIES Telephone MAIn 4185

OPPOSITE THE NEW CIVIC CENTRE

GREENWOOD'S BUILDING INDUSTRIES LTD.

Storage . Casemakers . Packers . Shippers
Tropical Packers . Transport Contractors

We Welcome your Enquiries for:
Transport, Packing, Casemaking and Storage

SALEM WORKS
LEES ROAD
OLDHAM
Tel.: MAIn 5436 (4 lines)

We are proud to have been your
Floodlighting Contractor

ELECTRICAL SPECIALISTS
CONSULTANTS

HEATING - LIGHTING - POWER

Butterworth's
SHAW

**24 Hour
Service**



SHAW 7773

ROYALE MOTORS

(CAR SALES) LIMITED

ROOTES Dealers

BOTTOM O'TH MOOR
OLDHAM

AGENTS for...

Humber
Hillman
Sunbeam
Singer
Commer

IMMEDIATE ARRANGEMENTS FOR
HIRE PURCHASE & INSURANCE

MAI - 3147

MAI - 4187

OLDHAM

Red and White Jerseys
Blue Shorts

- 1—CURRY, B. *LC*
- 2—ELLIOTT, M.
- 3—SHELTON, G.
- 4—BUCKLEY, T.
- 5—DOLLY, T.
- 6—MURPHY, M.
- 7—CANNING, T. *V*
- 8—BOTT, C.
- 9—TAYLOR, K. *T*
- 10—OGDEN, A.
- 11—SMETHURST, P.
- 12—IRVING, R.
- 13—FLETCHER, G.

Substitutes:—

- 14—
- 15—

Referee:

E. CLAY
(Leeds)

THE

**G
R
E
E
N**

FOR
ALL
LOCAL
SPORT

HUDDERSFIELD

Claret and Gold Jerseys
White Shorts

- 1—WALLACE
- 2—TOMLINSON, R.
- 3—RUSSELL, J.
- 4—LONGSTAFF
- 5—SENIOR, K.
- 6—BLACKETT, G.
- 7—LOXTON, K.
- 8—HEPPLESTON, D.
- 9—FINAN, A.
- 10—HEPWORTH, A.
- 11—VALENTINE, R.
- 12—MITCHELL
- 13—EDMONDS

Substitutes—

- 14—FORD, A.
- 15—HAYWOOD, R.

Touch Judges:

(Yellow Flag)
D. T. JAMES
(Liverpool)

(Crimson Flag)
F. J. HOWKER
(Rochdale)

FOR SAFE INVESTMENT

Regular Savings 10/- to £15 a month	4½%	Equal to 7¾%
Share Account any sum up to £5,000	4¼%	7¼%
Reserves approximately 6½% of assets	With Tax Paid by Society	With Tax at 8/3d. in £

The Society has Excellent Mortgage
Facilities Available

LANCASHIRE BUILDING SOCIETY

(formerly House and Mill Building Society)

127 UNION STREET, OLDHAM

Telephone **MAIn 4474**

Member of the Building Societies' Association

SHARES AND DEPOSITS IN THIS SOCIETY ARE
TRUSTEE INVESTMENTS

BUYING A CAR ?

For the Best Selection of Used Cars or any make
of New Car . . . VISIT

WESTHILL MOTORS

(OLDHAM) LTD.

MIDDLETON ROAD : OLDHAM

Telephones : MAIn 6370 and Medlock Head 1616

AND AT THE

OLDHAM USED CAR SHOW

Agents for ROVER, SINGER, LAND ROVER
STANDARD-TRIUMPH

Three Months' Guarantee with Used Cars
Hire Purchase and Insurance Arrangements

TEL. : BLA 6985

H. C. COOKES

(SPORTS) LTD.

26 JOHN DALTON ST.

Rugby Jerseys, Shorts, Stockings,
Over 36 Patterns of Rugby Boots:
Fosters, Walsh, Reebok, Elmer Cotton,
Winit, Lawrence, etc.

COOKES OF MANCHESTER

Suppliers of many leading Rugby Clubs
also at 109 DEANS GATE, MANCHESTER
Tel. : BLA 7312

ARTHUR GOSS

AND SON

"The Man's Shop"

For Men's Wear of Quality

SUITS, RAINCOATS, HATS & CAPS
SHIRTS, PYJAMAS, TIES & SOCKS, etc.

RHODES BANK : OLDHAM

Telephone : MAIn 2086

TELEPHONE : ASHTon 2310

R. BOARDMAN & CO. LIMITED

ALE AND STOUT BOTTLERS

WINE AND SPIRIT MERCHANTS

MINERAL WATER MANUFACTURERS

ASHTON-UNDER-LYNE



"GOLD STAR" KEG BITTER

"Bitter Beer at its Best"



Brewed by GROVES & WHITNALL LTD., Salford

(MEMBERS OF THE GREENALL WHITLEY GROUP)

SAVE CASH at ALPINE GARAGE (Oldham) LTD.

HOLLINS ROAD :: OLDHAM

Phone : MAIn 2022

FOR LOWEST PRICE PETROLS

CONSULT US FOR TYRES

— REMOULDS FROM £2.10.0

GRAND NATIONAL DRAW

The Grand National will be run at Aintree, Liverpool, on April 8th, 1967.

As you are aware, the Club are holding a draw for this event, and tickets will be on sale at today's game and at the Pavilion.

The draw will take place at the Pavilion on Sunday April 2nd, 1967. The prizes are as follows: First £100. Second £50. Third £25. Fourth £10; and £1 will be paid for every runner drawn.

A reminder to members that monies and counterfoils must be returned to the Promoter on or before Thursday, 30th March, 1967.

POOLS AGENTS ARE URGENTLY REQUIRED

Generous Commission — Special Privileges

Contact: Mr. F. J. Diskin at Secretary's Office for further details.

For Finest Wines and Spirits

Yates's Wine Lodges

6 High Street OLDHAM

Telephone MAIn 4933

Meet the Players—No. 15

MICK MOONEY

After a spell at St. Helens, Wigan-born Mooney signed for Blackpool Borough. Mick attracted the attention of several clubs whilst at Blackpool, and in January 1966 he joined Oldham for £2,000.

By trade he is a joiner, 24 years of age, stands 5ft. 10in. and weighs 14st. 3lbs. Mick is single and resides in Darlington Street East, Wigan.

He has a great admiration for 'Wires' former star Jackie Edwards, and is a pal of Jimmy Boylan, the Widnes No. 7.

Mick's hobbies apart from Rugby—"Fishing and Dominoes".



(Photograph by courtesy of Oldham Chronicle)

ESTABLISHED 1864

S. Hawley & Co. Ltd.

WHOLESALE TOBACCO, CIGARETTE
AND CIGAR MERCHANTS

PLEASE NOTE ONLY ADDRESS

Office and Warehouse:

90 PITT STREET :: OLDHAM

Telephone No. MAIn 1010

HERBERT JONES

★
PLUMBING CONTRACTOR
PROPERTY REPAIRS

Small Bore Heating Specialist

155 Huddersfield Road
OLDHAM

Phones : MAI 1710 - 3118

EDGAR BROOKS

(former Oldham & England hooker)

HIGH - CLASS

PAINTER and DECORATOR

PRIVATE or INDUSTRIAL
For a really first class job ring

MAI 6751

or write to :

114 HAVEN LANE, MOORSIDE
OLDHAM

For All Classes of Insurance Whitehead & Lees (Insurances) Ltd.

INCORPORATED INSURANCE BROKERS

34 UNION STREET
OLDHAM

TELEPHONE : MED 2361

FIXTURES FOR 1966 - 67 First Team

Date 1966	Opponents	Venue	Result	Date 1967	Opponents	Venue	Result
Aug. 20 (S)	Hull	Away	W 24-12	Jan. 7 (S)	Wigan	Away	P'oned
" 23 (Tu)	Blackpool Borough	Home	W 40-9	" 14 (S)	Barrow	Away	W 13-8
" 27 (S)	Hull	Home	W 20-7	" 21 (S)	Salford	Home	W 17-4
Sept. 2 (F)	Swinton	Home	W 16-13	" 27 (F)	St. Helens	Away	L 7-25
" 10 (S)	Salford	Away	L 13-15	Feb. 4 (S)	Huddersfield	Away	W 12-7
" 12 (M)	Salford	Away	W 7-2	" 11 (S)	(1st Rd. RL Cup)		
" 17 (S)	(Lancs. Cup 2nd Rd.)			" 17 (F)	Workington T.	Home	L 5-13
" 24 (S)	Blackpool B.	Away	W 22-4	" 25 (S)	St. Helens	Home	W 8-7
" 24 (S)	Whitehaven	Home	W 37-9	" 25 (S)	Leeds	Home	L 4-13
" 30 (F)	Halifax	Away	L 15-23	Mar. 3 (S)	(2nd Rd. R.L. Cup)		
Oct. 8 (S)	Wigan	Home	L 15-16	" 11 (S)	Widnes	Away	D 4-4
" 14 (F)	Liverpool C.	Away	W 19-15	" 24 (F)	Huddersfield	Home	
" 22 (S)	Rochdale H.	Home	W 12-7	" 25 (S)	Swinton	Away	
" 29 (S)	Whitehaven	Away	L 0-12	" 27 (M)	Widnes	Home	
Nov. 5 (S)	Wigan (L.C. Final)	Away	L 13-16		Halifax		
" 11 (F)	Leeds	Away	L 14-21				
" 18 (F)	Liverpool C.	Home	W 11-2				
" 22 (Tu)	Warrington	Away	L 17-21				
" 25 (F)	Widnes (Fl'it Comp.)	Away	W 14-11				
Dec. 3 (S)	Leeds	Home	W 16-13				
" 10 (S)	Workington T.	Away	W 13-9				
" 14 (W)	Barrow	Home	W 10-4				
" 17 (S)	Leigh	Away	L 8-12				
" 24 (S)	Leigh	Home	W 14-5				
" 26 (M)	Huddersfield	Away	L 7-13				
" 27 (Tu)	Swinton	Home	P'oned				
" 31 (S)	Rochdale H.	Away	0-0 Abnd.				
	Warrington	Home	L 6-12				

NEXT MATCH AT WATERSHEDDINGS

Friday, March 17th, 1967

Kick-off 7.30 p.m.

OLDHAM "A" v. SWINTON "A"



unbeatable coverage
RUGBY LEAGUER

For all the latest news, views, pictures and fact reports. Get your copy of the "Rugby Leaguer" every week.

On sale at all newsagents or write to :
SOUTH LANCASHIRE NEWSPAPERS LTD.
164 COLLEGE STREET, ST. HELENS

6^D
every Friday

Courtaulds Limited Spinning Division

THE NEW YARN SPINNING INDUSTRY

offers interesting, well-paid employment to young men and women. Enquire at our Employment Centre, 29 Manchester Street, Oldham (opposite the Ministry of Labour), between 10.30 a.m. and 6.0 p.m., Monday to Friday.

SKILLS WILL BE TAUGHT

in our modern Specialised Operative Training Centre in Shaw for work as machine operators in our mills in Oldham and District.

SCHOFIELDS

Since 1823

THE SPORTS SPECIALISTS

Suppliers to Oldham Rugby Football Club

16-18-20 GEORGE STREET, OLDHAM