

AVANTI ENGINEERING LTD.



GENERAL ENGINEERS
and manufacturers of
PAPERMAKING, TEXTILE
and
LAUNDRY MACHINERY



MANCHESTER ROAD
Clifton SWINTON Lancs.

Telephone: 061-794 5432 (9 lines)

Telegrams: ITNAVA, SWINTON, LANCS.

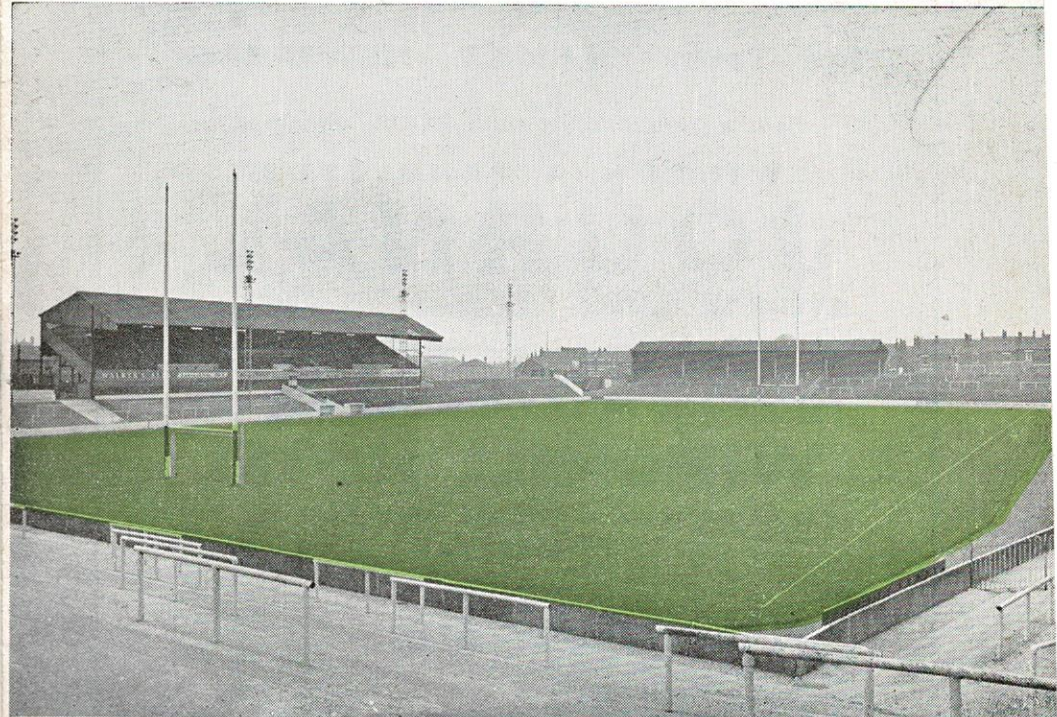
Telex: 66-8747

Printed by JOHN ROBERTS & SONS, Chapel Street, Salford M8 6BG.

SWINTON FOOTBALL CLUB CO. LTD.



Ground: STATION ROAD . SWINTON



SWINTON

versus

OLDHAM

OFFICIAL PROGRAMME 6^D

FOLLOW THE LIONS
Home and Away
With the Journal
Sports Writers

IN

The Town's FAMILY NEWSPAPER

Place a regular order with YOUR newsagent.

SWINTON & PENDLEBURY

JOURNAL

EVERY THURSDAY

PRICE 6d.

BEFORE AND AFTER THE MATCH VISIT THE

WINDMILL HOTEL

Corner of Bolton Road and Station Road
PENDLEBURY

TADDY ALES

BURTONS

(PEEL GREEN) LTD.

PRACTICAL BAKERS AND CONFECTIONERS

For "Modern Style" confectionery

GOLD AND SILVER MEDALIST

453, LIVERPOOL RD., PEEL GREEN

Tel: ECCles 3110

SWINTON FOOTBALL CLUB COMPANY LTD

DIRECTORS

Chairman: Dr. W. Kerns

Vice-Chairman: J. Bateman Esq.

Directors: Messrs. J. Edden, G. B. Hiley, D. G. Jones,
R. Kenny, Dr. B. A. Sides, J. H. Smith, J. E. Syddall,
W. A. Wallwork

Coach: A. Blan.

Asst. Coach: R. Thomas.

Secretary: V. H. Jones.

Phone: 061-794 1719

BOXING DAY, DECEMBER 26th, 1969. Kick-off 11 a.m.

SWINTON versus OLDHAM

THE DIRECTORS, PLAYERS AND STAFF WISH THE
COMPLIMENTS OF THE SEASON TO ALL SUPPORTERS

WELCOME TO OLDHAM

We welcome our old friends from Oldham for the annual Boxing Day fixture. Although this is the first occasion we have played at home on the morning of Boxing Day, we have played at Water-sheddings in a morning game on Christmas Day. This was in 1951, and following the game our team had to travel to Cardiff for a match there on Boxing Day.

We hope that this experiment will prove successful, with plenty of supporters turning out after spending Christmas Day at home.

The fixture is important to both teams, Oldham cannot afford to lose many more games if they are to stand any chance of playing First Division football next season, and we also need to pick up as many points as possible to strengthen our position in the top half of the League table.

The present League positions are as follows:—
Swinton (14th) P. 15, W. 9, L. 6. For 291, Agst. 164, Pts. 18
Oldham (26th) P. 18, W. 5, L. 13. For 266, Agst. 314, Pts. 10

This will be our second meeting of the season, for we played in the First Round of the Lancashire County Challenge Cup at Oldham on August 16th, and we won by 28 points to 24. In this game, although finishing the game badly depleted, Oldham made a grandstand finish, after we had been well in front.

Swinton supporters will have an interest in the Oldham side today, with George Swanston playing trials for the Oldham Club. Our own team is likely to be unchanged again, and we expect to field the team which has played in the last three matches.

INJURIES

Frank Hutton has had an operation on his injured knee, and has a loose piece of bone removed. This should now clear up the trouble with Frank's knee, and all being well, he could be playing again at the end of January.

Derek Jones and Alan Robinson are also making good recoveries following operations.

"A" TEAM

Our "A" Team have no fixture this week-end, and their next game is against Workington Town "A" at Swinton on Saturday, January 3rd. Our opponents in the Semi-final of the Challenge Shield should be known tomorrow when Rochdale "A" play the second leg, second round tie against St. Helens. St. Helens "A" hold a 16 points to 4 lead after the first leg. Salford "A" have already reached the final by defeating Warrington "A".

H. C. COOKE (SPORTS) LTD.

RUGBY SPECIALISTS

Suppliers to many leading clubs including Swinton, Salford, Oldham, Rochdale Hornets, etc., and Lancashire County.

Rugby Jerseys from 17/6 each. Rugby League Shorts, Black, White or Navy, 16/6 pair. Nylon Stockings from 8/6 pair.
Over 36 patterns of Rugby Boots, 38/- to 125/-.

26 JOHN DALTON ST., Manchester, 2
also at 109 Deansgate, (Tyldesley & Holbrook Ltd.) 834 7312
Special Terms to Clubs and Schools. Send for Catalogues. Tel.: 834 6985

Member N.H.F.

Swinton & Pendlebury
Chamber of Trade

TRY!



Eric Syddall

GENTS' HAIRDRESSER

For people that care—like you



58 The Parade

and

64 Chorley Road

SWINTON

STYLING
RAZOR CUTTING
BLOW WAVING

APPOINTMENTS AT
CHORLEY ROAD
ALL DAY
WEDNESDAYS

Telephone
061-794 1915

STAFFORDS of SWINTON

D.I.Y. and Garden Supplies Centre

51-53 STATION ROAD, SWINTON

Telephone: 794 2689

GARDEN SUPPLIES (Delivered or Collected)

3' x 2' x 2" Flags	8/3	2' x 1' 6" Flags	4/3
2'6" x 2' x 2" ,,	7/3	2' x 1' ,,	3/3
2' x 2' x 2" ,,	6/3	1'6" x 1' ,,	3/0

Walling Blocks 12" x 4" x 2½"	75/-	100
Concrete Edgings 3' x 6" x 2"	3/3	each
Tudor Walling, All Sizes and Colours	45/-	sq. yd.
Californian Screen Blocks	50/-	sq. yd.
Pennine Patio Paving	from 23/6	sq. yd.

Also Concreting and Bricklaying Materials, Granite Spar, Gate Posts, Clothes Posts, Shrub Tiles & Garden Ornaments, Rustic Furniture, Garden Sheds, Interwoven Fencing, etc.

DO IT YOURSELF SUPPLIES include the following:—

Timber (P.A.R.)	Roof Insulation
Plywood	Ladders and Steps
Hardboard	Nails and Screws
Contiboard	Locks and Hinges
Stanley Tools	Fablon Sheeting
Stanley-Bridge Power Tools	Plastic Roof Sheets
Plastic Floor Tiles	Plastic Gutters and Pipe
Ceramic Wall Tiles	Electrical Fittings
Polystyrene Ceiling Tiles	Rawlplugs
Garden Tools	Laconite Panels
White Wood Furniture	Swish Curtain Rail
Paint Brushes	Adhesives
	Formica Sheeting
	Draught Excluders

ALL THESE AND MANY MORE ITEMS TOO NUMEROUS TO MENTION ARE AVAILABLE AT

STAFFORD'S D.I.Y. AND GARDEN CENTRE
GOODS DEPOT B.R. and 51-53 STATION ROAD
SWINTON 794 2689

SPECTATOR VOTING IN PLAYER'S No. 6 RUGBY LEAGUE AWARDS

Supporters are asked to vote for their player of the match in the Player's No. 6 Award Scheme. Voting slips are available in the match programmes, and elsewhere around the ground. If you do not vote you may be depriving one of our own players of a chance of winning one of the several substantial prizes offered by Player's No. 6.

SUPPORTERS' NOTES

The Supporters' Association have held two dances in the Lions' Social Club recently; one on Hallowe'en and one on Friday, December 5th. Both dances were a complete success and those who took part will be looking forward to our next dance in the Lions' Social Club on Friday, 13th February.

The Swinton Amateur Rugby League Club are also holding a dance on Friday, 30th January, in the Social Club. We wish them every success and would ask all our friends to do their best to see that both dances are well supported.

The usual ties, blazer badges, scarves and bob hats, car badges and pens are on sale today. Many supporters, however, may not be aware that we are also selling children's "T" shirts printed on the front in blue with a lion, a rugby ball and the words "Swinton R.F.C., Lancashire Cup Winners, Season 1969/70." These are on sale at 6/- each. We have only two sizes—30" and 32".

THE SPORTSMEN'S RENDEZVOUS

RED LION HOTEL

Prop.: George Simpson

A CHARRINGTON HOUSE FULLY LICENSED
Bottled Beers, Bass, Worthington, etc.

GUINNESS and JUBILEE STOUT

Large Car and Coach Park. A few minutes from the Ground

MUSIC

ALL FOR THE GOOD OF THE GAME



RUGBY LEAGUER

THE ONLY NEWSPAPER DEVOTED ENTIRELY TO RUGBY LEAGUE

Every Wednesday
throughout the season **7**^d

Ask your Newsagent to order your copy today or complete the order form for delivery to your home

You save money by taking the Full Season's Subscription TO THE PUBLISHER, RUGBY LEAGUER, 164 COLLEGE STREET, ST. HELENS, LANCs.

Please post Rugby Leaguer to me each week for 13 weeks (12/6); 26 weeks (£1.5.0); full season (£1.15.0). (Delete words not applicable).

As the Leaguer is not published during the close season the subscription will continue into the following season until the expiry date.

I enclose remittance NAME.....

value..... ADDRESS

Please write in block letters

The Christmas Draw was made by Bobbie Fleet and resulted as follows:—

15 lb. turkey	T.0932	B. Hall, 101 Giants Seat, Radcliffe.
12 lb. Turkey	Q.0757	S. Hartley, 12 Narbonne Av., Eccles.
Bot. Whisky	C.0638	497, L.U.T.
Bot. Port	O.0661	L. Shepherd, 99 Dorchester Rd., Swinton
Ball ice bucket	N.0265	Albert's Garage, Warrington.
Chicken	H.0440	E. Simmons, 58 Chelford Dr., Pendlebury
Bot. sherry	N.0835	J. Taylor, 10 Balmoral Rd., Clifton
Crate beer	I.0683	J. Dyson, 59 Denbigh Rd., Clifton.
Sparklet syphon	C.0225	Val, c/o R. Smith, Bolton Rd., Pendlebury
Tin biscuits	O.0523	No name.
Piece of pork	H.0605	S. Lysons, 5 Elizabeth St., Pendlebury.
2 lb. box chocs.	I.0461	Mrs. A. Collins, 6 Dorning Rd., Swinton
Basket fruit	P.0766	Ian Scott, 28 Newark Rd., Clifton.
Box cigars	D.0985	T. Higgins, L.U.T.
Bot. rum	Q.0772	F. H. Mayor, 118 Ver.wood Rd., Prestwich
A Club tie	A.0560	No name.
Half tea service	P.0192	No name.
Cand. bedspread	L.0996	H. Pearson
Two hand towels	M.0935	Lions' Den.
100 cigarettes	H.0448	T. Berrisford, 60 Chelford Drive.
Six white towels	F.0805	Mrs. Lord, L.U.T.
Box choc. liqueurs	H.0996	June Garratt.
Pen set	H.0155	B. Beamish, 51 Everard House, Salford 5
Box handkerchiefs	P.0757	H. Hancock, c/o Hursts, Swinton
2 pairs nylons	P.0640	W. Toft, 19 Reginald St. Peel Green.

The Committee thank all Agents for their support and wish all supporters the compliments of the season.

**ALL RL MEN
MUST READ...**

**FOOTBALL
PINK
FINAL**

**... TO BE ON
THE BALL**

**Results, reports
and exclusives**

**ALL THE LATEST
RL NEWS IN THE**

**MANCHESTER
EVENING NEWS**

**FOR "UP-TO-DATE" REPORTS
OF
SWINTON'S MATCHES**

★

**READ THE
"SALFORD
CITY
REPORTER"**

★

EVERY FRIDAY—PRICE 6d

Referee: Mr. J. MANLEY of Warrington.
Touch Judges: Mr. L. Hunt (Maroon), Mr. G. Battersby (Orange)

SWINTON

Blue with White V

Full Back:

1. GOWERS

Three-Quarters:

2. GOMERSALL
3. FLEET
4. BUCKLEY
5. PHILBIN

Half Backs:

6. DAVIES
7. KENNY

Forwards:

8. BATE
9. CLARKE
10. MacKAY
11. HOLLIDAY
12. SMITH
13. ROBINSON

Substitutes:

14. PRICE
15. WHITTLE

OLDHAM

Red and White

Full Back:

1. MURPHY

Three Quarters:

2. ELLIOTT
3. LARDER
4. GARRETT
5. SWANSTON

Half Backs:

6. DAVIES
7. SMITH

Forwards:

8. GARDINER
9. TAYLOR
10. WILSON
11. IRVING
12. McCORMACK
13. CLARK

Substitutes:

14. MULLARKEY
15. RUSSELL

You're always on the winning side—
WHEN YOU SEND HER FLOWERS !

HURST'S

FLORISTS AND GARDEN STORES

223 CHORLEY ROAD :: SWINTON

Telephone: 794 1454

BRITISH TELEFLOWER SERVICE

**Follow
your
team
in
comfort**

★ ☆
PRIVATE
PARTIES
CATERED
FOR
★ ☆

**LANCASHIRE UNITED
TRANSPORT LIMITED**

ENQUIRIES
BOOKINGS, Etc.

Partington Lane
SWINTON

Phone:
SWinton 2893

**COMPETITIVE MOTOR
PREMIUMS**

**TOP LIFE RATES
AND BONUSES**

**FACILITIES FOR UNIT
INVESTMENTS**

contact

Walter Ainsbury

& SON LTD.

77/79 Station Road,

PENDLEBURY

(Opposite Main Gates)

Telephone: SW1 1241-2

Local Agents for the
**BURNLEY BUILDING
SOCIETY**

PLAYER'S No. 6 PLAYER OF THE MATCH

The result of the Player's No. 6 award for the match against Huyton was as follows:

1. D. Robinson (Swinton)
2. P. Kenny (Swinton)
3. C. Wills (Huyton)

FIXTURES

Our next match is against St. Helens at Knowsley Road, on New Years' Day, kick-off 3.0 p.m.

The match at Workington is on SUNDAY, January 4th, 1970 and again the kick-off will be at 3.0 p.m.

Visit our Bars.

LOUNGE BAR UNDER THE MAIN STAND

and the Long Bar on the Railway side

MATCHES AT STATION ROAD

SATURDAY, JANUARY 3rd, 1970.

Kick-off 3-0 p.m.

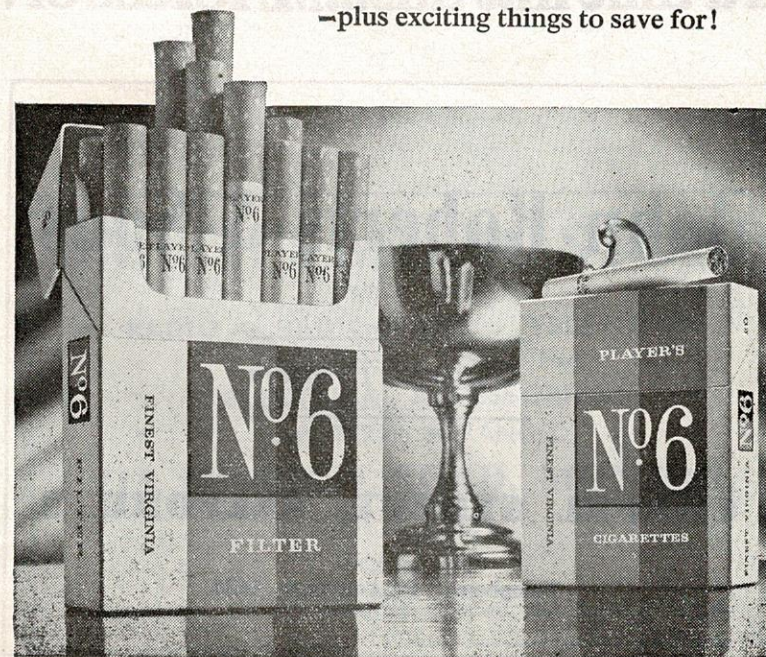
SWINTON 'A' *versus* WORKINGTON 'A'

PLAYER'S

Nº6

give you
guaranteed quality

—plus exciting things to save for!



PNS 279B

£1,500 in prize money to be competed for by
Rugby League Clubs in the Mackeson Merit Table



At a time like this...MACKESON!

John Roberts & Sons

General Printers

CHAPEL STREET, SALFORD 3

Telephone: BLackfriars 1626

APPEARANCES AND SCORERS

(Including Charity Match)

	Played	Goals	Tries	Points
ATKINSON L.	8	—	1	3
BATE	17	—	2	6
BUCKLEY	19	—	12	36
CLARKE	18	—	2	6
CUMMINGS	5	—	—	—
DAVIES	18	—	10	30
DAINTY	2	—	—	—
FLEET	14	—	2	6
GOMERSALL.....	17	—	8	24
GOWERS	18	61	1	125
HOLLIDAY	17	14	1	31
HOYLE	1	—	—	—
HUTTON	14	—	1	3
KENNY	17	9	13	57
LENTON	1	—	—	—
LAING	1	—	—	—
MACKAY	15	—	1	3
PHILBIN	15	—	12	36
PRESTON	2	—	—	—
PRICE	18	—	4	12
ROBINSON, D.	16	—	3	9
SCOTT	3	—	—	—
SIMPSON	4	—	—	—
SMITH.....	20	—	7	21
WHITTLE	4	—	—	—
WILLIAMS	6	—	1	3
WOOD	2	—	—	—

SMITH'S MUSIC STORE

(Prop. S. Rowley)

RADIO . RADIOGRAMS . TELEVISION

RECORDS . L.P. . Etc.

ELECTRICAL ACCESSORIES

H.P. TERMS ARRANGED

213 MONTON ROAD, MONTON,

ECCLES

ECCles 2269

Suppliers of all records played on the ground.

**SWINTON R.F.C.
DEVELOPMENT ASSOCIATION**

SUPPORT THE CLUB BY BECOMING A REGULAR
BUYER OF OUR NEW INSTANT BINGO TICKET

BINGO

INSTANT
BINGO

LUCKY
NUMBERS

YOU OPEN THE TICKET AND CHECK IT
IMMEDIATELY—ALL THE NUMBERS INSIDE

OVER £125 IN PRIZES EACH WEEK
YOU WIN — WE WIN

BECOME AN AGENT FOR THE NEW SWINTON TICKETS.
GOOD COMMISSION AND EXPENSES. ASK FOR DETAILS.

NAME

ADDRESS

To: Swinton R.F.C. Development Association, Football Ground,
Swinton.

THE NORTH'S LUXURY CLUB

**THE
WISHING WELL
CLUB**

Station Road, Swinton

★ ★ ★

Cabaret and Dancing

TOP LINE ENTERTAINMENT

★ ★ ★

**WE BRING YOU THE STARS
OF TODAY AND TOMORROW**

EVERY

**WEDNESDAY, THURSDAY, FRIDAY,
SATURDAY AND SUNDAY**

Doors open at 7 p.m.

★ ★ ★

We have Clubland's Best Pint—

It's TETLEY'S of course

★ ★ ★

MEMBERSHIP OPEN FOR 21 AND OVER

5/- per year

You will wish you had been a Member sooner

FIXTURES & RESULTS

FIRST TEAM

		F.	A.
1969			
Aug. 9—	St. Helens ...H	4	32
	(C.C.)		
	16—Oldham (L.C.) A	28	24
	23—Whitehaven ...A	3	17
	30—Batley ...H	31	13
Sept. 1—	Salford (6.0) ...A	5	8
	10—Widnes (7.30) A	29	9
	13—Barrow ...H	43	3
	17—Bl'kpool L.C. H	59	5
	20—Leigh ...A	2	12
	27—Whitehaven H	32	7
Oct. 4—	Batley ...A	12	19
	8—Wigan L.C. ...H	9	6
	(7.30)		
	11—Widnes ...H	20	8
	13—St. Helens ...H	9	17
	F.C. (7.30)		
	18—York ...H	14	7
	24—Warrington ...A	11	29
Nov. 1—	Leigh L.C. ...H	11	2
	8—Rochdale H. ...A	5	8
	22—Workington H	23	8
	29—Featherstone A		P.
Dec. 6—	Hunslet ...H	21	14
	12—Barrow (7.0) ...A		P.
	17—Huyton (7.30)H	40	2
	20—		
	26—Oldham ...H		
	(11 a.m.)		
1970			
Jan. 1—	St. Helens ...A		
	4—Workington ...A		
	10—Featherstone H		
	17—Hunslet ...A		
	24—Warrington H		
	31—Huyton ...A		
Feb. 7—	R.L. Cup (1)		
	11—Blackpool B. H		
	(7.30)		
	14—Rochdale H H		
	21—R.L. Cup (2)		
	28—York ...A		
Mar. 7—	Wigan ...H		
	14—Blackpool B. ...A		
	20—Leigh (7.30)...H		
	21—R.L. Cup (S.F.)		
	27—Oldham ...A		
	28—Salford ...H		
	30—St. Helens ...H		
April 4—	R.L. Cup (S.F.)		
	11—Wigan ...A		

Kick-off 3.0 p.m. unless otherwise stated.

'A' TEAM

		F.	A.
1969			
Aug. 23—	Wigan ...H	19	7
	30—Widnes ...A	15	19
	(L.C.C.S.)		
Sept. 6	Widnes ...H	20	10
	(L.C.C.S.)		
	13—Barrow ...A	15	17
	20—Leigh ...H	61	0
Oct. 4—	Widnes ...H	7	19
	11—Widnes ...A	8	28
	25—Warrington H	19	7
Nov. 8—	Workington ...A	10	11
	(L.C.C.S.)		
	14—Salford (7.30)...A	8	17
	22—Workington ...A	5	18
	29—Workington H	19	9
	(L.C.C.S.)		
Dec. 6—	Huyton ...A	15	4
	13—Barrow ...H	15	3
	20—Leigh ...A		P.
Jan. 3—	Workington H		
	10—Oldham ...A		
	17—Oldham ...H		
	24—Warrington ...A		
	31—Huyton ...H		
Feb. 14—	Rochdale H. ...A		
	21—St. Helens ...H		
Mar. 7—	Wigan ...A		
	21—St. Helens ...A		
	—Salford ...H		
	—Rochdale H. H		

Lanes Construction

Co. (Manchester) Ltd.

Building Contractors

**BUILDERS OF ARCHITECTURALLY DESIGNED
HOUSES AND BUNGALOWS**

4, CAMPBELL RD., SWINTON

MANCHESTER

TEL. SWinton 2836

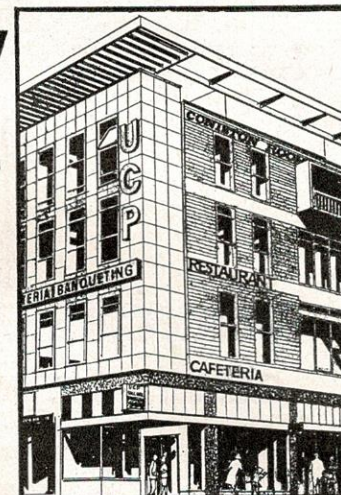
For a really
good meal

VISIT A

UCP

RESTAURANT

MANOR Brown St. (Market St.)
TUDOR Oxford St. (near Odeon)



PALL MALL RESTAURANT
MARKET STREET.
Restaurant, Cafeteria, Banqueting