

AVANTI ENGINEERING LTD.



GENERAL ENGINEERS
and manufacturers of
MACHINES and EQUIPMENT
for
PROCESS INDUSTRIES



MANCHESTER ROAD
Clifton SWINTON Lancs.

Telephone: 061-794 5432 (9 lines)

Telegrams: ITNAVA; SWINTON, LANCs.

Telex: 66-8747

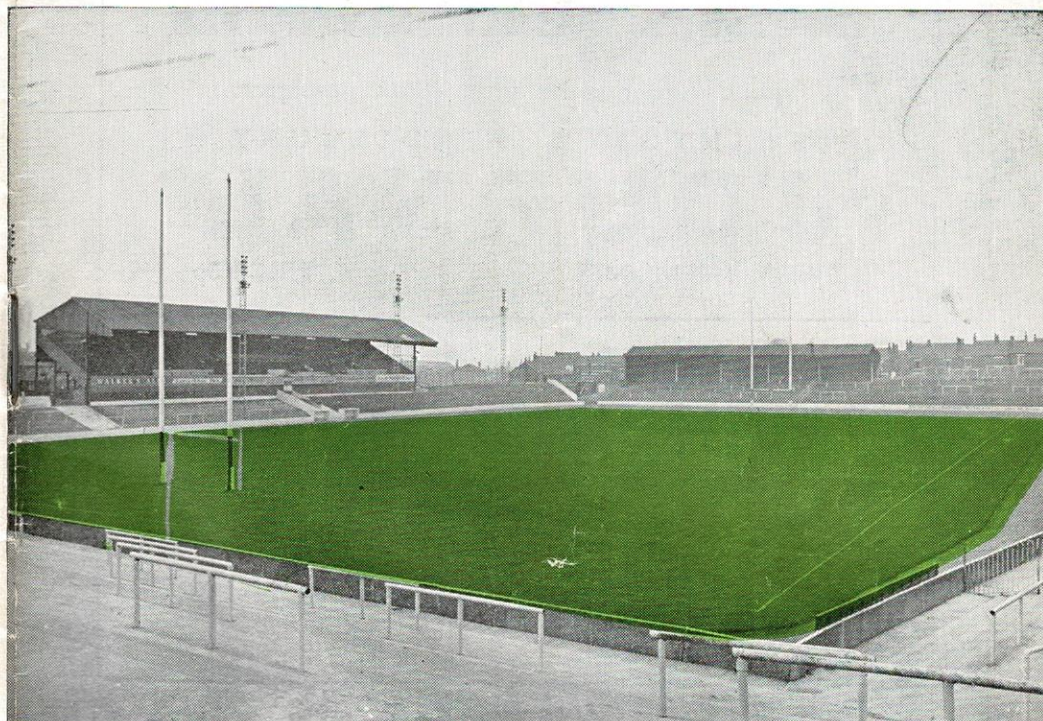
A Member of the Weston-Evans Group

Printed by JOHN ROBERTS & SONS, Chapel Street, Salford M3 6BG.

8-Aug-1971
SWINTON

**FOOTBALL CLUB
CO. LTD.**

Ground: STATION ROAD | SWINTON



SWINTON 10

versus

OLDHAM 7

OFFICIAL PROGRAMME 3p

FOLLOW THE LIONS

**Home and Away
With the Journal
Sports Writers**

IN

The Town's FAMILY NEWSPAPER

Place a regular order with YOUR newsagent.

SWINTON & PENDLEBURY

JOURNAL

EVERY THURSDAY

PRICE 3p

BEFORE AND AFTER THE MATCH VISIT THE

WINDMILL HOTEL

Corner of Bolton Road and Station Road
PENDLEBURY

TADDY ALES

**WHY NOT BOOK A MEAL FOR AFTER
THE MATCH?**

GAY WILLOWS HOTEL

**CLIFTON
Manchester**

Residential
Licensed Restaurant
Digest Bar
Phone 061-794 3761

Weddings and Parties
Catered for
Car Park
Prop. Mrs. I. Anderson

SWINTON FOOTBALL CLUB COMPANY LTD.

President: B. Manson Esq.

DIRECTORS

Chairman: Dr. W. Kerns

Vice-Chairman: J. Bateman Esq.

Directors: Messrs. J. Edden, G. B. Hiley, D. G. Jones,
R. Kenny, Dr. B. A. Sides, J. H. Smith, J. E. Syddall,
W. A. Wallwork

Coach: A. Blan. *Asst. Coach:* R. Thomas.

Secretary: V. H. Jones.

Phone: 061-794 1719

LIFE MEMBERS

Mrs. Anderton
N. Armitage
W. Barker
Mrs. W. Barker
E. Blackshaw
Mrs. Burton
E. Burton
Mrs. Bower
G. H. Clare
Mrs. Cordwell
Mrs. Cullis
F. S. Ferguson
T. R. Forster
B. Foulkes

W. Grimes
Mrs. A. Hickman
Miss A. Howard
E. H. W. Hirst
R. Henshaw
J. K. Hiley
Mrs. V. H. Jones
Mrs. Johnson
G. W. Jones
Mrs. Kay
E. Kenny
A. Kitchen
Mrs. A. Kitchen
P. J. Kitchen

E. C. Lane
B. Manson
L. S. Part
W. H. Parkinson
Mrs. Robertson
D. Robertson
Counc. A. Rigg
Mrs. A. Rigg
Mrs. C. Smith
Mrs. Scholes
Miss E. Scholes
Miss K. Scholes
J. Scholes
Mrs. J. Scholes

R. W. Spruce
C. Sidebotham
L. Sidebotham
W. B. Sidebotham
Miss H. Sharrocks
Mrs. Tonge
J. I. Wallwork
A. B. Wallwork
J. Walker
T. Whittle
B. Wheatley
Mrs. Wolstencroft

^{AUG}
SUNDAY, 8th JULY 1971.

Kick-off 3-0 p.m.

SWINTON *versus* OLDHAM

This afternoon the Lions begin another competitive season with the visit of near neighbours Oldham in the Lancashire Cup. So far Swinton have been most impressive in the matches designed to get the players onto concert pitch. The home fixture with Rochdale Hornets was won 18-5 and then the Lions pulled off an excellent victory when they defeated Halifax by 30 points to nine at Thrum Hall. Last weekend Swinton competed in the Rochdale sevens and in round one Oldham seemed to have the match stitched up when they led 10-3 in the second-half. But the Lions staged an exciting revival which swept them to a 13-10 win. In the semi-final a last minute try by Widnes proved to be enough to clinch a final spot for the Chemics but in the end Salford's virtually unbeatable seven lifted the Qualcast Trophy.

FOR QUICK SALES . . .

IN SWINTON / WALKDEN / WORSLEY AREAS

Consult your Local Agents

SPECIALISTS IN THE SALE OF RESIDENTIAL PROPERTY

Aubrey Lee McConnell & Co.

121 Chorley Road, Swinton, M27 2AA

Telephones: 794 8015/6

ALSO AT

MANCHESTER / MIDDLETON / PRESTWICH

and in association with

AUBREY LEE MILLER & CO.

BURY AND WHITEFIELD

BRANCH OFFICE NATIONWIDE BUILDING SOCIETY

Member N.H.F.

Swinton & Pendlebury
Chamber of Trade

TRY!

Eric Syddall

GENTS' HAIRDRESSER

For people that care—like you

58 The Parade

Open all day Saturday

and

64 Chorley Road

Open all day Wednesday

SWINTON

STYLING RAZOR CUTTING BLOW WAVING

Telephone

061-794 1915

STAFFORDS of SWINTON

D.I.Y. and Garden Supplies Centre

West End Trading Estate, Swinton

Telephone: 794 2689

GARDEN SUPPLIES (Delivered or Collected)

3' x 2' x 2" Flags	8/3	2' x 1' 6" Flags	4/3
2'6" x 2' x 2" ..	7/3	2' x 1' ..	3/3
2' x 2' x 2" ..	6/3	1'6" x 1' ..	3/0

Walling Blocks 12' x 4' x 2½' 75/- 100

Concrete Edgings 3' x 6' x 2" 3/3 each

Tudor Walling, All Sizes and Colours 45/- sq. yd.

Californian Screen Blocks 50/- sq. yd.

Pennine Patio Paving from 23/6 sq. yd.

Also **Concreting and Bricklaying Materials, Granite Spar, Gate Posts, Clothes Posts, Shrub Tiles & Garden Ornaments, Rustic Furniture, Garden Sheds, Interwoven Fencing, etc.**

DO IT YOURSELF SUPPLIES include the following:—

Timber (P.A.R.)	Roof Insulation
Plywood	Ladders and Steps
Hardboard	Nails and Screws
Contiboard	Locks and Hinges
Stanley Tools	Fablon Sheeting
Stanley-Bridge Power Tools	Plastic Roof Sheets
Plastic Floor Tiles	Plastic Gutters and Pipe
Ceramic Wall Tiles	Electrical Fittings
Polystyrene Ceiling Tiles	Rawlplugs
Garden Tools	Lacomite Panels
White Wood Furniture	Swish Curtain Rail
Paint Brushes	Adhesives
Draught Excluders	Formica Sheeting

ALL THESE AND MANY MORE ITEMS TOO NUMEROUS TO MENTION ARE AVAILABLE AT

STAFFORD'S D.I.Y. AND GARDEN CENTRE

**WEST END TRADING ESTATE
SWINTON 794 2689**

There is a vast difference between sevens rugby and cup-tie rugby as will be seen this afternoon especially as our visitors have enjoyed a successful Lancashire Cup history. Oldham have appeared in sixteen Lancashire Cup finals winning the Cup on nine occasions. Their first Lancashire Cup victory was as long ago as 1907 when they defeated Broughton Rangers 16-9. The following year Wigan took the Cup from them by winning the final 10-9. There was another one point margin in the final of 1910 when Oldham beat Swinton 4-3 but again the Roughyeds lost the following year's final, this time to Rochdale Hornets 12-5. In 1913 Oldham won the Cup for a third time by beating Wigan 5-0. Immediately after the First World War Oldham were well beaten by Rochdale Hornets 22-0 but they bounced back to take the cup the following season with a 7-0 win against those same Hornets. In 1921 Warrington defeated Oldham 7-5 in the Lancashire Cup Final but the lads from Watersheddings regained the Cup in 1924 by beating St. Helens Recs. 10-0. In 1933 the smallest Cup Final crowd in the competition, 9,085, saw Oldham again beat St. Helens Recs., this time 12-0. It took 21 years for Oldham to reach their next cup final but Barrow ended Oldham's celebrations by winning 12-2 in the 1954 final. Throughout 1956-7-8 Oldham paraded their best ever side which ran up a hat trick of Lancashire Cup successes beating St. Helens 10-3, Wigan 13-8 and St. Helens again, 12-2. The 1957 final against Wigan was a real cracker which was watched by a 42,497 crowd who paid a record £6,918.

Wigan gained a little revenge in the 1966 final by beating Oldham 16-13 but when the Oldham reached the final of 1968 they fell to the heaviest cup final defeat in the competition's history when St. Helens thrashed them 30-2. Surprisingly Oldham led 2-0 at half-time but injuries upset an otherwise quite efficient team.

The present Oldham line-up also contains several first class players who should provide a stern test for the Lions this afternoon. At full-back Martin Murphy turned in enough steady, consistent

THE SPORTSMEN'S RENDEZVOUS

RED LION HOTEL

Prop.: George Simpson

A CHARRINGTON HOUSE

FULLY LICENSED

Bottled Beers, Bass, Worthington, etc.

GUINNESS and JUBILEE STOUT

Large Car and Coach Park.

A few minutes from the Ground

MUSIC

All for the Good of the Game!

RUGBY LEAGUER

THE ONLY NEWSPAPER
DEVOTED ENTIRELY TO
RUGBY LEAGUE

EVERY WEDNESDAY
throughout the season

* Ask your Newsagent to order your
copy today or complete the order form
for delivery to your home

YOU SAVE MONEY BY TAKING THE FULL SEASON'S SUBSCRIPTION

To the Publisher, Rugby Leaguer, 164 College Street, St. Helens, Lancs.

Please post Rugby Leaguer to me each week for 13 weeks (75p);

26 weeks (£1.50); full season (£2.40) (Delete words not applicable).

As the Leaguer is not published during the close season the subscription will
continue into the following season until the expiry date.

I enclose remittance value.....

NAME

ADDRESS

PLEASE WRITE IN BLOCK LETTERS

displays last season to enable him to get into the Lancashire shadow team. He joined Oldham in April 1967 from Astley and Tyldesley Colliery and he frequently joins into the attack for last season he scored nine tries.

Winger Mike Elliott has a fair turn of speed, he was signed eight years ago from Cardiff R.U.F.C.

Oldham's leading goal kicker last season was Terry Garrett who landed 85 as well as scoring 7 tries. He was once on the books of Oldham Athletic. Twenty one years old Mick Wilde, a former Oldham junior, is staking a strong claim for inclusion in today's team. He made his debut for Oldham at Wigan in the last match of last season.

Other players with the chance of a first team spot are Jim McCormack, signed from Wigan in 1964, and Wilf Briggs who came from Leigh in February, 1968. Fighting for the stand-off position are Tommy Davies (9 tries last season) and Johnny Blair. Blair is a fine prospect for the future who managed 6 goals and a try from a limited number of appearances last season. Lancashire county representative Cliff Hill joined Oldham from Wigan last January. This former Newton-le-Willows R.U.F.C. player has visited Wembley three times whilst with Wigan.

Ged Smith, the tiny scrum-half with a heart of a lion, is Oldham's most popular player. He began his career with Widnes before moving to Barrow and then on to Watersheddings.

Oldham's strongest department is their pack which is led by Ken Wilson. Wilson came to Oldham from Gloucester R.U.F.C. eight seasons ago and in 1963 he was a member of the England team which beat France 6-5 at Twickenham.

Former Lancashire schoolboy and U17 hooker Kevin Taylor was signed from Werneth in 1962. His outstanding ability has earned him representative honours with Lancashire, England Under 24 and England. Another international forward is Bob Irving who was signed from Huddersfield Saint Josephs. He scored 13 tries last season and he has represented Yorkshire, England Under 24 and Great Britain. During the 1970 Australasian tour Irving scored 6 tries from 15 appearances.

Second-row forward Dick Bonser will need no introduction to Station Road patrons for he was a member of the Swinton team which clinched the First Division Championship in 1962-63. He played 26 times for Swinton that season scoring one try in the 34-7 home win over Salford. Oldham paid £750 for his services when they secured him from Huyton last autumn.

Last season Ray Clark, the former Warrington and Lancashire loose-forward, was switched onto the wing where he notched 13 tries. Other forwards in running for today's cup-tie are Bill Churm,

Results Reports Exclusives

**Manchester
Evening News**

**football
PINK**

**FOR THE TOP
WRITERS IN SPORT!**

FOR "UP-TO-DATE" REPORTS
OF
SWINTON'S MATCHES



READ THE
**"SALFORD
CITY
REPORTER"**



EVERY FRIDAY :: PRICE 4½p

Referee: Mr. D. G. KERSHAW of York
Touch Judges: Mr. P. M. Oliver (Maroon), Mr. P. Halstead (Orange)

SWINTON 10

(Blue with White V)

Full Back:

1. CADMAN

Three-Quarters:

2. ~~FLAY~~ *Comersall*

3. DAVIES or
~~GOMERSALL~~

4. BUCKLEY

5. HUGHES

Half Backs:

6. KENNY

7. GOWERS *5 goals*

Forwards:

8. BATE

9. MURRAY

10. MacKAY

11. SMITH

12. CRAMANT

13. PATTINSON

Substitutes:

14. *SIMPSON*

15. SIMPSON/HUTTON

OLDHAM 7

(Red and White Jerseys, Blue Shorts)

Full Back:

1. MURPHY

Three Quarters:

2. ELLIOTT

3. STARKEY *2 goals*

4. COLLINS

5. CLARK *1 goal*

Half Backs:

6. DAVIES

7. SMITH

Forwards:

8. WILSON

9. TAYLOR

10. OGDEN

11. IRVING

12. BONSER

13. REYNOLDS

Substitutes:

14. BRIGGS

15. OWEN

You're always on the winning side—

WHEN YOU SEND HER FLOWERS

HURST'S

FLORISTS AND GARDEN STORES

223 CHORLEY ROAD :: SWINTON

Telephone: 794 1454

BRITISH TELEFLOWER SERVICE

Follow your Team
in Comfort

**LANCASHIRE
UNITED**

TRANSPORT LTD

PRIVATE PARTIES
CATERED FOR

Telephone: 061-794 2295

COMPETITIVE MOTOR
PREMIUMS

TOP LIFE RATES
AND BONUSES

FACILITIES FOR UNIT
INVESTMENTS

contact

Walter Ainsbury

& SON LTD.

77/79 Station Road,
PENDLEBURY

(Opposite Main Gates)

Telephone: SW1 1241-2

Local Agents for the
**BURNLEY BUILDING
SOCIETY**

an Oldham junior who had spells with Warrington and Salford, Jim Reynolds, a Leigh junior who has been turning on some promising displays, and Gareth Owen, the 18 year old son of Stan Owen, who joined Oldham last January.

As a warm up to this afternoon's confrontation Salford provided the opposition in Oldham's charity fixture 12 days ago. Unfortunately our visitors were without several players for this match and as Salford were virtually at full strength it was no surprise that Salford's costly squad ran out 35-8 winners.

Last season Oldham showed considerable improvement in league competition but were beaten first time out in all four knock-out competitions. Placed 16th in the league table, Oldham won 12 and drew an incredible seven matches but their cup knock-outs read: Lancashire Cup, Salford (h) lost 35-12; Floodlit Cup, Huddersfield (a) lost 14-5; Challenge Cup, Leeds (a) lost 49-2 and Championship play-off, Wigan (a) lost 12-7.

Throughout the years there have been many interesting and exciting matches between Oldham and Swinton. Indeed the meetings on Good Friday and Boxing Day have been the highlight of the season for many supporters. Last season our sides did not meet but this season they do, the first occasion being a fortnight next Wednesday, here at Station Road.

In recent seasons Oldham have three times faced the Lions in Lancashire Cup ties. In 1966 a very exciting first round tie at Watersheddings was won 16-13 by the home side who went on to reach the final only to lose by that same score to Wigan. The following season Swinton gained revenge in a second round match which they won 11-8. The last occasion on which Oldham met Swinton in a Lancashire Cup-tie was in 1969 at Watersheddings when the Lions won a see-saw match 28-24. Unfortunately the match was marred by the dismissals of Oldham's Derek Whitehead and Charlie McCourt. Swinton went on to win the Cup with an 11-2 victory over Leigh at Central Park.

But let's go back to Oldham's last visit to Station Road in this competition during 1967-68. Oldham had beaten Leigh 17-11 in round one with Swinton beating Widnes 12-9. The match was played on the Thursday of Oldham's September holiday week, September 7th, and the many Oldham supporters who travelled down to Station Road boosted the attendance to 6,300. It proved to be a close fought affair with Swinton winning 11-8 thanks to a try from Bobby Fleet and goals from Derek Whitehead (3) and Ken Halliwell. Oldham's points came from four Brian Curry goals and the two sides were:

Swinton: Derek Whitehead; John Stopford, Bobby Fleet, Alan Buckley, John Gomersall; Austin Rhodes, Ken Gowers; Ken Halliwell, Derek Clarke, Harold Bate (sub. Bernard Scott), Graham Rees, Barry Simpson and Frank Hutton.

PLAYER'S **Nº6**
give you
guaranteed quality

—plus exciting things to save for!



PNS 379B

THE DROME GARAGE

FOR
QUALITY USED CARS

162-170, PARTINGTON LANE, SWINTON
(3 minutes from this ground, opposite new clinic)

HIRE PURCHASE TERMS
GENEROUS PART EXCHANGE ALLOWANCES
INSURANCE FACILITIES

ALL MODELS ON VIEW IN BRILLIANTLY LIT
SHOWROOM

Tel. (061) 794 5799

John Roberts & Sons

General Printers

CHAPEL STREET, SALFORD 3

Telephone: BLackfriars 1626

Oldham: Brian Curry; Martin Murphy, Geoff Shelton, Jim McCormack, Mike Elliott; John Donovan, Tommy Canning; Ian Howarth, Graham Wood, Peter Bamford, Jack Hill, Alan Ogden and Denis Maders.

Swinton were drawn at home again in the semi-finals but they were defeated by St. Helens who went on to win the cup against Warrington in a replayed final.

Oldham visit Station Road today with hopes of revenge after last week's sevens match. Victory will bring a handsome reward for the winners will meet either Salford or Workington Town in the quarter-final and then, in the semifinal, the quarter-final winners meet either Huyton or Wigan. The prospect of meeting Salford and then Wigan will certainly give the players plenty of incentive so a hard, keen encounter is envisaged.

FRIDAY, AUGUST 20th, 1971.

Kick-off 7-30 p.m.

NEXT HOME MATCH

SWINTON 'A' versus ROCHDALE H. 'A'

H. C. COOKE (SPORTS) LTD. RUGBY SPECIALISTS

Suppliers to many leading clubs including Swinton, Salford, Oldham, Rochdale Hornets, etc., and Lancashire County.

Rugby Jerseys from 17/6 each. Rugby League Shorts, Black, White or Navy, 16/6 pair. Nylon Stockings from 8/6 pair.

Over 36 patterns of Rugby Boots, 38/- to 125/-.

26 JOHN DALTON ST., Manchester, 2

also at 109 Deansgate, (Tyldesley & Holbrook Ltd.) 834 7312

Special Terms to Clubs and Schools. Send for Catalogues. Tel.: 834 6985

**SWINTON
R.F.C.**

NEW TICKET

Gives YOU a chance to WIN £50,000
can you afford it? — at 5p each you cannot afford to miss it !!!

**YOUR NEW TICKET CONTAINS A
NUMBER**

THIS IS YOUR LUCKY NUMBER
and also the number of
YOUR TREBLE CHANCE LINE

A complete list showing all 12,870 lines is on display at the office and in the LIONS SOCIAL CLUB.

You can check your own line from these Charts. The Promoter can also quickly identify all winning lines and will publish them on the following week so that claims can be made. Keep your ticket. You may need it to claim.

TREBLE CHANCE LINES (one for every ticket sold) are taken on Vernons Pool every week by the Promoter.

This is a full permutation of Any 8 from 16 matches, amounting to 12,870 lines.

The 16 selected matches are printed on the Prize Result Sheet, and a copy is supplied to you so that you can mark off the results on Saturday evening. A list will also be on show at the Lions' Social Club.

If there are 8 Score Draws amongst the 16 matches, then one of the tickets is a BIG winner. This could be you; and you also have a chance of winning any of the lesser dividends.

Your ticket contains a Lucky Number for Cash Prizes as shown on the ticket. This number is also the number of YOUR TREBLE CHANCE LINE.

The new Ticket starts Monday, August 9th

**KEEP THIS LIST FOR
CHECKING**

**Do not destroy your ticket.
You may need it for claims.**

**Your Matches for Saturday,
14th August**

3 pts.—Score Draw
2 pts.—No Score Draw
1½ pts.—Away 1 pt.—Home

**The Home Teams of the
selected matches are:**

- | | |
|--------------|----------------|
| 1. Coventry | 9. Bradford C. |
| 2. Derby | 10. Mansfield |
| 3. Ipswich | 11. Torquay |
| 4. West Ham | 12. Barrow |
| 5. Blackpool | 13. Darlington |
| 6. Carlisle | 14. Lincoln |
| 7. Fulham | 15. Dundee U. |
| 8. Q.P.R. | 16. Motherwell |

THE SWINTON TICKET

CONTAINS

THE TREBLE CHANCE

which becomes your entry on
Vernons Treble Chance

Every ticket holder wins one of these
Lines, and all of these are paid for
by the Promoter as Prize Money.

PLUS

**TWO HOUSES OF BINGO
LINE PRIZE**

BOOBY PRIZE

LUCKY NUMBER
for cash prizes

LUCKY FRUITS

MONTHLY STAR PRIZE

Continental Holiday for Two
Our first winners leave for 8
days in Yugoslavia on Sept. 5th

Many more people will want to buy one of these new tickets. This means that a number of Agents are now required in all areas. Highest rates of commission paid. If you can sell 10 or more tickets to your friends and neighbours — at work, or at the office, or during the evening — please fill in your name and address and send it to:

THE SECRETARY,
SWINTON R.F.C.,
STATION ROAD,
SWINTON.

**CAN YOU AFFORD THIS
TICKET? AT 5p EACH YOU
CANNOT AFFORD TO
MISS IT**

FIXTURES & RESULTS

FIRST TEAM

1971 F. A.

Aug. 8—OldhamH 10-7
(Lancs. Cup)
21—BramleyA
25—OldhamH
(7.30)
28—Featherst'n H
30—SalfordA

Sept. 5—Blackpool B.... A
12—YorkH
19—DoncasterA
25—HullA

Oct. 3—Widnes.....H
8—New Zealand
(7.30)H
10—HunsletA
16—Barrow.....H
24—Warrington ...A
30—Whitehaven H

Nov. 7—YorkA
13—Players No. 6
21—Blackpool B. H
27—Players No. 6

Dec. 5—Rochdale H. H
11—Workington A
18—BramleyH
27—Whitehaven ...A

1972

Jan. 1—HullH
8—OldhamA
16—Bradford N. H
23—HuytonA
29—R.L. Cup (1)

Feb. 6—WidnesA
13—Doncaster ...H
19—R.L. Cup (2)
26—BarrowA

Mar. 5—Warrington H
12—Rochdale H....A
19—HunsletH
26—Bradford N. ...A
31—SalfordH

April 3—Workington H
8—Featherstone...A
16—HuytonH

'A' TEAM

1971

Aug. 20—Rochdale H. H
(7.30)
28—OldhamA

Sept. 4—Whitehaven H
17/18—Salford ...H
24—Wigan (7.30) H

Oct. 2—WidnesA
16—BarrowA
22—Warrington H
(7.30)
30—Whitehaven ...A

Nov. 2—Salford (7.30) A
12—St. Helens ...H
(7.30)
20—WiganA

Dec. 4—Rochdale H. ...A
11—Workington H
18—St. HelensA

1972

Jan. 8—OldhamH
22—HuytonH
Feb. 5—WidnesH
12—LeighA
26—Barrow.....H

Mar. 3—Warrington ...A
(7.30)
24—Leigh (7.30) H

April 3—Workington ...A
15—HuytonA

Lanes Construction

Co. (Manchester) Ltd.

Building Contractors

BUILDERS OF ARCHITECTURALLY DESIGNED
HOUSES AND BUNGALOWS

4, CAMPBELL RD., SWINTON

MANCHESTER

TEL. SWinton 2836

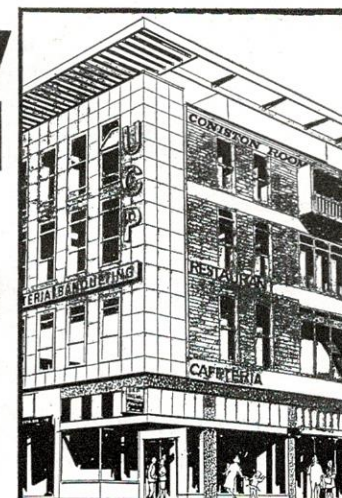
For a really
good meal

VISIT A

UCP

RESTAURANT

MANOR Brown St. (Market St.)
TUDOR Oxford St. (near Odeon)



PALL MALL RESTAURANT
MARKET STREET.
Restaurant, Cafeteria, Banqueting

F763

THE SWINTON FOOTBALL CLUB CO. LIMITED
STATION ROAD . SWINTON near MANCHESTER

SWINTON 10

VERSUS

OLDHAM 7

SUNDAY, AUGUST 8th, 1971.

Kick-off 3-0 p.m.

SWINTON 10

FROM:

CADMAN
FLEAY
DAVIES
GOMERSALL
BUCKLEY
HUGHES
KENNY
GOWERS 5 goals
BATE
MURRAY
MACKAY
SMITH
CRAMANT
PATTINSON
SIMPSON
HUTTON

OLDHAM 7

FROM:

MURPHY
ELLIOTT
STARKEY 2 goals
COLLINS
CLARK 1 try
DAVIES
SMITH
WILSON
TAYLOR
OGDEN
IRVING
BONSER
REYNOLDS
BRIGGS
OWEN

Referee: Mr. D. G. KERSHAW of York

Touch Judges: Mr. P. M. Oliver (Maroon), Mr. P. Halstead (Orange)
