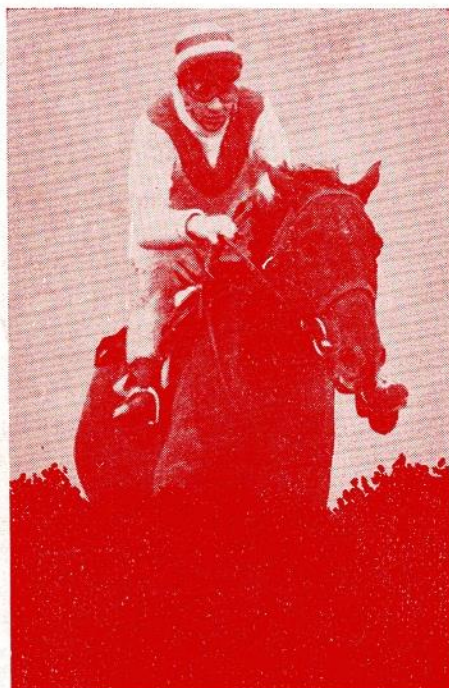


THE NORTH WEST'S MOST PROGRESSIVE
TURF ACCOUNTANT

BOB COLLINS

of ST. HELENS

HEAD OFFICE: 1 BOROUGH ROAD
Branches throughtout St. Helens Also at Widnes



Enjoy your BETTING with a FIRM OF REPUTE

Specialists in Board Betting

Authorised to BET AT TOTE PRICES

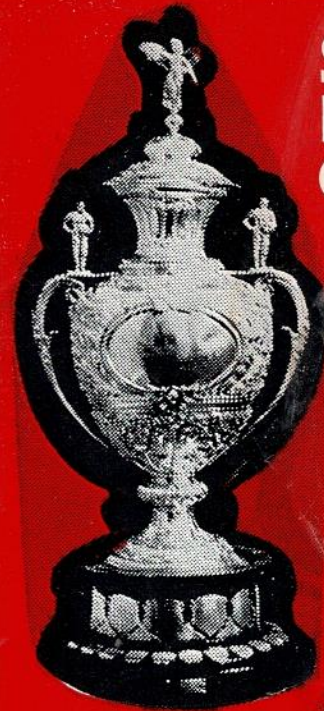
HORSES AND DOGS

Book open on all Future Events

OUR SERVICE IS SECOND TO NONE

Phone: ST. HELENS 25414 (Multi Lines)

0911 611111



WINNERS 1972

CHALLENGE CUP



ST. HELENS RUGBY FOOTBALL CLUB LTD.

VERSUS OLDHAM

LEAGUE
CHAMPIONSHIP
FRIDAY
1st DECEMBER
1972

Kick off 7-30 p.m.

OFFICIAL
MAGAZINE

5p

No 1059

ST. HELENS RUGBY FOOTBALL CLUB LIMITED



All for the Good of the Game!

RUGBY LEAGUER

**THE ONLY NEWSPAPER
DEVOTED ENTIRELY TO
RUGBY LEAGUE**

**EVERY WEDNESDAY
throughout the season**

* Ask your Newsagent to order your
copy today or complete the order form
for delivery to your home

YOU SAVE MONEY BY TAKING THE FULL SEASON'S SUBSCRIPTION
To the Publisher, Rugby Leaguer, 164 College Street, St. Helens, Lancs.

Please post Rugby Leaguer to me each week for 13 weeks (75p);
26 weeks (£1.50); full season (£2.40) (Delete words not applicable).

As the Leaguer is not published during the close season the subscription will
continue into the following season until the expiry date.

I enclose remittance value.....

NAME

ADDRESS

PLEASE WRITE IN BLOCK LETTERS

President: LORD PILKINGTON

GROUND:
Knowsley Road, St. Helens
Office Telephone: 23697

COLOURS:
White Jerseys with Red "V"
White Shorts

First match played September 1890
against Manchester Rangers

BOARD OF DIRECTORS:
Chairman: H. B. Cook

Vice-Chairman: Coun. C. Martin, J.P.
T. Ashcroft, J. H. Clegg, J.P.,
F. C. Dromgoole, S. Ince,
Dr. H. A. Lomax, A. Naylor,
J. Pickavance, L. Prescott,
J. Seddon, H. Stott

*Representative on The Rugby League
Council—*H. Stott

*Representative on The Lancashire County
Committee—*Coun. C. Martin, J.P.

*Company Secretary—*J. Seddon, F.C.A.

*Company Auditor—*T. Callon, C.A.

Honorary Physician—
Dr. H. Anthony Lomax,
B.A., (Cantab.), M.R.C.S., L.R.C.P.

Honorary Dental Surgeon—
J. H. Clegg, J.P., L.D.S., R.C.S. Eng.

Physiotherapist—
K. Henthorne, M.S.R.G.

General Manager: Basil Lowe

Secretary: Miss Ruth Baker

Assistant: L. Kilshaw

Promotions Manager: J. E. Gill

Coach: J. Challinor

Captain: T. K. Coslett

Trainer: E. Cheetham

"A" Team Coach: W. Boycott

HONOURS

Challenge Cup Competition

Winners: 1956, 1961, 1966, 1972
Runners-up: 1897, 1915, 1930, 1953

Rugby League Championship

Winners: 1931/32, 1952/53, 1958/59,
1965/66, 1969/70, 1970/71
Runners-up: 1962/63, 1964/65,
1966/67, 1971/72

League Leaders' Trophy

Winners: 1964/65, 1965/66

Lancashire Challenge Cup

Winners: 1926, 1953, 1960, 1961, 1962,
1963, 1964, 1967, 1968
Runners-up: 1932, 1952, 1956, 1958,
1959, 1970

Lancashire League

Winners: 1929/30, 1931/32, 1952/53,
1959/60, 1963/64, 1964/65, 1965/66,
1966/67, 1968/69
Runners-up: 1953/54, 1955/56,
1957/58, 1958/59, 1960/61, 1967/68

Western Divisional Championship

Winners: 1963/64

BBC2 Floodlit Trophy

Winners: 1971
Runners-up: 1965, 1968, 1970

Player's N°6 Champions in Sport!



This year, Rugby League has a real boost. With two great competitions—the Player's N°6 Trophy and the N°6 Player of the Year Awards. Both have big prize money. So that's sure to mean big excitement!

Make a date with Player's

SAINTS CLUB NEWS

A RETURN TO WINNING WAYS

And so we return to winning ways with a 24-8 victory against a strong Featherstone team, and for those who consider that we "beat nowt" a win for them against us would have put them but four points behind the current league leaders with one game in hand.

There are few finer sights on a rugby league ground than seeing "Joner" in full flight for the line with the opposition trailing without hope, and this could not have been a better return for Les who took his chance well and also changed the whole picture of the game at a time when the "Saints" appeared to be struggling.

Later, Roy Mathias got the message, and he also proved that given a half chance he can rank with the best in the game to-day being able to come away from his own line or beat the opposition by courage and strength from the short run in.

The return of John Mantle and the return to form of Eric Chisnall made a difference to the pack, and with everyone showing improvement perhaps we can say that we are coming back to the early season form.

A VALUABLE TROPHY

The only trophy we have yet to win (bar the Yorkshire Cup) is the Player's No. 6. Trophy, and this would appear now to be well within our grasp with a "Home" draw in the Third Round against Widnes on Saturday, 9th December, with a 2.15 p.m. kick-off. We have a score to settle with the Naughton Park Outfit following our exit from the Lancashire Cup at Widnes on the 13th September, but as for most of the season, we had injury problems on that evening which meant pushing in players who had not even trained together.

A good win against the "Chemicals" should see us into the New Year without defeat, and for Saints supporters' it is indeed a good month for "Home" fixtures with matches following this evening against Widnes, Workington and Wigan.

As the weather goes colder we shall have to take precautions to see that our fixtures are played, and it is intended to make sure of the plum fixture against Wigan on Boxing Day by applying the blankets regardless of forecasts of sunny spells and showers.

THE INJURY LIST

The news regarding both our first team players on the injured list is indeed good, and it is hoped that Tony Karalius will be playing again very shortly having made an almost complete recovery from his shoulder injury. Ken Kelly is in the same position and both could be fit for the match against Widnes and if not then, well before the old year is out.

JOE WALSH

CAR INSURANCE REPAIR SPECIALISTS

Modern Repair Workshop Up to date Equipment
Experienced Craftsmen 24 hour Accident Recovery Service

Head Office & Works:

SHERDLEY ROAD, ST. HELENS

Telephone: ST. HELENS 22001 & 26274

GET
IN
TOUCH

For Modern Equipment and Book-keeping Methods

THE MODERN PRESS

with

CECIL DROMGOOLE

Bickerstaffe St., St. Helens. Tel. 22012

EMMETS TAXIS

11 Corporation Street, St. Helens

Holiday travel.

Wedding cars.

Distance no object!

Fully Licensed and Insured.

St. Helens 28507.

Contractors to St. Helens R.F.C.
Social Club.

12 Seat Mini Bus for away matches.

FOSTER BUILDINGS LIMITED

RAINFORD

Contractors
to the
St. Helens
Club

SAINTS CLUB NEWS

PLAYERS No. 6 TROPHY — THIRD ROUND DRAW

HULL KINGSTON ROVERS	v	SWINTON
SALFORD	v	BRADFORD NORTHERN
ST. HELENS	v	WIDNES Saturday, December 9th, 2.15 p.m. kick off.
HULL	v	LEEDS

LEAGUE TABLE

	P.	W.	L.	D.	F	A	Pts.
WARRINGTON	14	13	1	0	361	163	26
LEEDS	12	11	1	0	334	90	22
OLDHAM	14	10	2	2	286	131	22
ST. HELENS	13	10	2	1	280	114	21
WIDNES	14	10	4	0	256	157	20
WAKEFIELD	14	10	4	0	262	167	20
FEATHERSTONE	13	10	3	0	253	194	20

SCHOOLBOY SEVEN-a-SIDE

(Before the match)

St. Cuthberts (maroon and gold stripes) v St. Aelreds (Yellow)

(Half-time)

Central (Light and dark blue bands) v Parr (Red and White)

STAND BAR

The Stand Bar is open prior to the match and remains open throughout the game until thirty minutes after the final whistle.

ST. HELENS v WIDNES

Reserved stand season tickets for the next home match St. Helens v Widnes on Saturday 9th December will be on sale daily from Monday 10.00 a.m. till 1.00 p.m., and from 5.30 p.m. till 8.30 p.m. Normal stand prices.

BILL BENYON "250" DRAW

The first draw will be made in the Concert Room on Sunday next at 12.45 p.m.

We are still accepting membership, application should be made to the club shop after this match.

"THE LADBROKE DRAW"

At half-time there will be a draw for the "Ladbroke" £5 bet.

J. PICKAVANCE Ltd.

The BIG Name in Haulage and Excavation

A FLEET OF 90 LORRIES

(including Atkinson, Leyland, Dodge, Ford, Albion).

PLANT MACHINERY:

Caterpillars : D8's : Rippers : Crushers : Dozers
etc.

NO JOB IS TOO LARGE

We can supply

★ STONE

★ SHALE

★ SOIL

★ ASHES

For Building and Road Making

SUPERIOR FAST SERVICE

Estimates invited for Bulk Excavation Work —

Consult the professionals

J. PICKAVANCE

SHERDLEY ROAD, ST. HELENS

Telephone 26161



Action from the League Championship match against Featherstone — 27th October, 1972

ST. HELENS 24

Colours: Royal Blue Jersey,
White Shorts

- | | |
|-------------------------|---------------|
| 1. PIMBLETT, G. | Full Back |
| 2. JONES, L. | Right Wing |
| 3. BENYON, W. | Right Centre |
| 4. WELLMAN, C. | Left Centre |
| 5. MATHIAS, R. | Left Wing |
| 6. ECKERSLEY, D. | Stand Off |
| 7. HEATON, J. | Scrum Half |
| 8. STEPHENS, J. | Front Row |
| 9. GREENALL, L. | Hooker |
| 10. WOODYER, E. | Front Row |
| 11. MANTLE, J. | Second Row |
| 12. CHISNALL, E. | Second Row |
| 13. COSLETT, K. (Capt.) | Loose Forward |

Substitutes:

14. WILLS, J.
15. MURPHY, M.

Referee: Mr. W. H. THOMPSON (Huddersfield)

Touch Judges: Mr. D. WATSON and Mr. F. BESWICK

(Two Substitutes can be allowed at any time in the game and may themselves be replaced, but once only)

OLDHAM 10

Colours: Red & White
Jerseys: Blue Shorts

- | |
|--------------------------|
| 1. MURPHY M. |
| 2. ELLIOTT M. |
| 3. LARDER P. |
| 4. DAVIES T. |
| 5. HODGKINSON N. 2 tries |
| 6. WAINWRIGHT A. |
| 7. McCONE M. |
| 8. WILSON K. |
| 9. TAYLOR K. |
| 10. FOSTER F. 2 goals |
| 11. IRVING R. |
| 12. DALEY A. |
| 13. REYHOLDS J. |

Substitute

14. O'BRIEN J.
15. ASHCROFT K.



KEL COSLETT
Saints 'Capt.'



JEFF HEATON
Saints 'Scrum-half'



St. Helens

24

Oldham 10

Goals
Tries
Scrum
Penalties
Half-time:
Final: 24 10

GAVIN MURRAY'S TRAVEL SERVICE

61 BOUNDARY ROAD,
ST. HELENS

Tel.: 22882-3-4

FOLLOW THE SAINTS EXAMPLE

*For all your
Travel Arrangements
consult*

ST. HELENS
LEADING TRAVEL AGENTS

ELLISONS TRAVEL SERVICE

28 WESTFIELD STREET,
ST. HELENS

Tel.: 23600

FIRST TEAM				
Date	Opponents	Grd.		
1972				
Aug. F	11—Salford (Char. Cup)	7.30A	12-12	
Su	20—Rochdale H., 3.00	A	21- 3	
Tu	22—Warrington, 7.30	H	15-11	
F	25—Huyton, 7.30	H	41- 2	
M	28—Huyton, 3.00	A	47-13	
Sept. Su	3—Warrington (L.C.), 3.00A	18-16		
F	8—Leigh, 7.30	H	9- 2	
W	13—Widnes (L.C.) 7.30	A	2-13	
Su	17—Featherstone R., 3.00	A	14-19	
F	23—Halifax (No. 6 Comp.)	A	22-20	
Oct. F	29—Swinton, 7.30	H	33-12	
Tu	7—Oldham, 3.00	A	12-12	
W	10—Leeds (BBC 2) 7.15	H	6-14	
F	13—Bradford N., 7.30	H	22- 8	
Su	22—Dewsbury, 3.00	A	17-12	
F	27—Featherstone R., 7.30	H	33- 8	
Nov. F	3—Dewsbury, 7.30	H	12- 7	
W	15—Australia, 7.30	H	9-24	
F	18—Workington T., 3.00	A	4-12	
Dec. F	24—Featherstone (No. 6)	H	24- 8	
1—Oldham, 7.30		H		
9—Widnes (No. 6) 2-15		H		
F	15—Workington T., 7.30	H		
Su	24—Blackpool B., 3.00	A		
Tu	30—Wigan, 3.00	H		
30—Open Date				
1973				
Jan. M	1—Widnes	A		
Su	7—Bradford N., 3.00	A		
F	12—Rochdale H., 7.30	H		
20—Leeds, 3.00		A		
Feb. F	27—Challenge Cup, 1st Rd.			
Su	2—Barrow, 7.30	H		
17—Warrington, 3.00		A		
F	23—Challenge Cup, 2nd Rd.			
Mar. F	2—Blackpool B., 7.30	H		
Su	11—Whitehaven, 3.00	A		
F	16—Salford, 7.30	H		
Su	25—Leigh, 3.30	A		
April	30—Whitehaven, 7.30	H		
7—Open Date (Chal. Cup S.F.)				
13—Open Date (Chall. Cup S.F.)				
F	20—Wigan, 3.00	A		
M	23—Widnes, 7.30	H		
May	28—Top "16" Play Off			
5—Top "16" Semi-finals				
12—Challenge Cup Final				
19—Top "16" Final				
—Swinton, 3.00		A		
—Leeds, 7.30		H		
—Barrow, 2.30		A		

"A" TEAM				
Date	Opponents	Grd.		
1972				
Aug. 15	Wigan "A", 7.30	A	7-30	
21—Warrington "A" (Chall. Shield), 7.30		A	4-16	
26—Huyton "A", 3.00		A	35- 9	
Sept. 1—Widnes "A", 7.30		A	4- 9	
4—Warrington "A" (Chall. Shield), 7.30		H	17-16	
9—Leigh "A", 3.00		A	12-17	
23—Workington T. "A", 3.00		H	27- 6	
30—Swinton "A", 3.00		A	24-13	
Oct. 6—Oldham "A", 7.30		H	19- 3	
20—Swinton "A", 7.30		H	11- 9	
Nov. 4—Rochdale "A", 3.0		H	14-11	
10—Warrington "A", 7.30		A	9-14	
18—Workington T. "A", 3.00		H	15- 4	
Dec. 2—Oldham "A", 3.00		A		
8—Barrow "A", 7.30		H		
16—Workington T. "A", 3.00		A		
23—Swinton "A", 3.00		A		
29—Widnes "A", 7.30		A		
1973				
Jan. 5—Widnes "A", 7.30		H		
13—Rochdale H. "A", 3.00		A		
19—Salford "A", 7.30		A		
27—Rochdale H. "A", 3.00		A		
Feb. 3—Barrow "A", 3.00		A		
9—Warrington "A", 7.30		H		
16—Huyton "A", 7.30		H		
24—Salford "A", 3.00		H		
March 9—Swinton "A", 7.30		H		
23—Leigh "A", 7.30		H		
April 13—Widnes "A", 7.30		H		
20—Wigan "A", 11.00 a.m.		H		
15—Rochdale "A", 7.30		H		
—Workington T. "A", 3.00		A		

JOHN PLAYER COMPETITION		
Sat. 23rd Sept., 1972	— First Round	
Sat. 25th Nov., 1972	— Second Round	
Sat. 9th Dec., 1972	— Third Round	
Sat. 30th Dec., 1972	— Semi-final (1)	
Sat. 13th Jan., 1973	— Semi-final (2)	
Sat. 24th Mar., 1973	— Final	

CHALLENGE CUP COMPETITION		
Sat. 27th Jan., 1973	— First Round Proper	
Sat. 17th Feb., 1973	— Second Rd. Proper	
Sat. 3rd Mar., 1973	— Third Round	
Sat. 7th April, 1973	— Semi-final (1)	
Sat. 14th April, 1973	— Semi-final (2)	
Sat. 12th May, 1973	— Final	

OUR VISITORS

Oldham are an amazing Club in that although they have a comparatively small band of registered players nothing seems to be able to keep them under for long.

They shrug of injuries easily because they have a good, if not numerous set of reserves, and this season have upset the odds against the League's best sides, last week-end completing the enviable double over Wigan.

Early this season they held Saints to a 12-12 draw at Watersheddings and it will take all that the Knowsley Road outfit can offer to prevent Oldham from taking full League points tonight.

Starring in his familiar role of full-back is Martin Murphy who was transfer listed last season at £10,000 but has now settled his differences and is happy to stay at Watersheddings.

The threequarter line up looks as strong as any seen at Knowsley Road this season. On the wing is speedy Norman Hodgkinson who joined Oldham from a Rugby Union Club in the London area. Norman is proving himself a prolific try scorer this season and given any opportunity he will find a way over the line. He and his team mate on the opposite flank, South Wales born Mike Elliott the coloured lad who has been with Oldham for many seasons and they are lucky in having centres who are well above par.

Twenty-two year old Tony Wainwright, a stand-off who was signed from Leeds in September was immediately moved into the left centre berth where Oldham had a weak link and he has been partnered by Rugby goal kicker Phil Larder who joined the Club from Sale Rugby Union Club. To-night he will be back to his best position at Stand-off-Half.

Oldham are well placed for centres, with Mick Siddall a junior signing from Yorkshire Amateur Club Ovenden, Joe Collins who has been at Watersheddings for some time but is still young enough to be challenging for a first team place, and youngster Stuart Bottom and Keith Jackson, all looking worthy of senior selection.

Club captain Cliff Hill signed from Wigan a couple of seasons ago, has been lending his useful experience at stand-off but will almost certainly be out of action tonight with hamstringing trouble.

Keith Ashcroft ex-Wigan is an experienced player who is a useful stand-in for regular front row men Ken 'Tug' Wilson and Frank Foster, the big Cumbrian who has made such a vast difference to the Oldham "Power Pack". Hooker Kevin Taylor makes up a strong trio in the front row.

County and International player Bob Irving, who came on as substitute in the World Cup Final against Australia in France, is in the second row. He will be partnered by Widnes lad Arthur Daley who is challenging for a first team place, Jeff Munro who is already being tipped for future honours, or Gareth Owens son of former St. Helens, Leigh and Rochdale favourite Stan Owens, and who can also play at prop if needed. Leigh lad Jim Reynolds only 20 years old but already a firm favourite with the Watersheddings crowd, will be in his usual position of loose forward to complete what looks to be a strong and workmanlike Oldham team.

JACK CASE LTD.

PLANT HIRE and DEMOLITION CONTRACTOR

Registered Office and Plant Depot:

ASHTON CROSS, ASHTON-IN-MAKERFIELD Near WIGAN
Tel.: Ashton-in-Makerfield 77257/8

Ashes and Haulage: **RAM PIT YARD, HAYDOCK, Near ST. HELENS**
Tel.: Ashton-in-Makerfield 77369-77265

SPORTS FIELDS CONSTRUCTION AND LEVELLING

T. Ashcroft & Co.

WHOLESALE DISTRIBUTORS

CHOCOLATES
SWEETS ETC.,

3 Haydock Street, St. Helens

Tel.: St. Helens 26925

Tel.: St. Helens 23007

**W. G. DIXON
LTD.**

Funeral Furnishers of Repute
Since 1880

4 BICKERSTAFFE STREET
ST. HELENS.

(Nr. St. Helens Station)

DISPENSING

FRANK FLYNN
M.P.S.

CHEMIST

155 DUKE ST., ST. HELENS
Telephone 23898

We supply the "SAINTS"

TV FROM

HAROLD STOTT

If you wish to see the finest selection
in town, either for sale or rent.

Call at:

18 Westfield Street

where you can see 29 different
models on show.

Pick from FERGUSON, HMY, ULTRA,
PYE, EKCO, GEC, DECCA, MURPHY,
BUSH, KB, MARCONI, etc.

and remember...

its the Service that counts at:-

HAROLD STOTT

18 WESTFIELD STREET

St. Helens 34141

**Anytime...anywhere...
you can bet on it**



With a Ladbroke Credit Card you
enjoy nationwide service including
Board Prices, No Limit, Terms,
Unrivalled Racecourse
Representation and Exciting
Jackpots.

Area Manager' Mr. B. Kelly
To open a credit account phone
MANCHESTER (061) 834 8131



"SPECIALISTS IN WHEEL BALANCING"

Murray & Price Tyre Service Ltd.

6a Rivington Road, St. Helens.

Telephone: St. Helens 23106

ALL MAKES OF TYRES SUPPLIED

For LOWEST PRICES,

WIDER CHOICE

and

FREE DELIVERY

Ring...

GALLIE'S

YOUR LEADING WINE and SPIRITS MERCHANTS

3 MARKET STREET, ST. HELENS

St. Helens 22325

**For Winter Warmth
and Comfort**

**DOUBLE-GLAZE
YOUR WINDOWS**

with

PILKINGTON

'Insulight'® Units



Pilkington Brothers Limited

Saints Club News

SAINTS v OLDHAM results over the past Ten Years

Season 1971/72

Oct. 18th	St. Helens 50	Oldham 2
Dec. 4th	Oldham 0	St. Helens 28
Jan. 29th	Oldham 6	St. Helens 8 (R.L.C.C. 1st Rnd)

Season 1969/70

Nov. 22nd	St. Helens 41	Oldham 10
Apr. 6th	Oldham 0	St. Helens 43

1968/69

Oct. 25th	St. Helens 30	Oldham 2 (Lancs. Cup Final)
Feb. 25th	Oldham 6	St. Helens 15 (R.L.C.C. 2nd Rnd)
Mar. 28th	St. Helens 19	Oldham 4
Apr. 15th	Oldham 2	St. Helens 17

1967/68

Nov. 7th	St. Helens 14	Oldham 0 (B.B.C. 2)
Dec. 16th	St. Helens 10	Oldham 2
Jan. 20th	Oldham 14	St. Helens 26

1966/67

Jan. 27th	St. Helens 25	Oldham 7
Feb. 18th	Oldham 8	St. Helens 7

1965/66

Oct. 1st	St. Helens 23	Oldham 17
Jan. 8th	Oldham 13	St. Helens 9
May 7th	St. Helens 15	Oldham 10 (Top 16)

1964/65

Oct. 31st	St. Helens 22	Oldham 6
Mar. 13th	Oldham 9	St. Helens 15

1963/64

May 1st	St. Helens 22	Oldham 11 (W.R. Semi final)
---------	---------------	-----------------------------

1962/63

Oct. 2nd	Oldham 8	St. Helens 10 (Lancs. Cup semi-final)
May 6th	St. Helens 22	Oldham 8
May 30th	Oldham 9	St. Helens 24

APPEARANCES-TRIES-GOALS SEASON 1972/73
Up to and including Featherstone game, on 24th November, 1972.)

	LEAGUE		LANCS. CUP		PLAYERS' No. 6		B.B.C. 2		TOTAL			
	App.	Tries	Goals	App.	Tries	Goals	App.	Tries	Goals	App.	Tries	Goals
BENYON	10	1		2	2		1	15		1		
CHISNALL	10	2		2	1		1	14		2		
COSLETT	13	1	51	2		4	1	18	3	1		66
EARL	6	2		2	1			9		2		
ECKERSLEY	7	6	1		1		1	9		7		1
GREENALL	3	1			1			4		1		
GWILLIAM	1											
HEATON	12	3		2	2		1	17		4		
HOUGHTON	4	1						4		1		
HUGHES	1							1				
JAMES	2							2				
JONES												
KARALIUS	7	2		1	1		1	1		1		
KELLY	7	6		1	1		2	10		2		
LYON	3							10		8		
MANTLE	12	2		2	2			3				
MATHIAS	12	5		2	2	1	1	17		2		
MURPHY	8			1	2	3	1	17		9		
PIMBLETT	9	2		2	2		1	12				
PRESCOTT	3	2	2	2	2			13		2		2
REES	6			2	2			3		2		
STEPHENS	10	3		2	2		1	11				
TAYLOR	2	1		1	2		1	14		3		
WALLER	3							2		1		
WALSH	10		5	1	2			4				
WELLMAN	5	1					1	13		5		
WHITTLE	2			2	1			6		1		
WILLS	10	1		2		1	1	5		1		
WILSON	13	11	2	1	2		1	15		2		
WOODYER	4	1			1		1	16		14		
								4		1		
195	54	59	30	4	4	8	15	0	3	270	68	74

ERIC BROMILOW

Your Local Private Trader

CYCLE — RADIO — T.V. and ELECTRICAL

Established over 25 years

81 CHURCH STREET

53 BALDWIN STREET

13-15 NORTH ROAD

5 PARK ROAD

ST. HELENS

Telephone: 25015 and 23018

SALES SERVICE

ALL CLASSES OF ELECTRICAL INSTALLATION WORK
 CARRIED OUT
 ESTIMATES FREE

SHOP LIGHTING A SPECIALITY

CHARLES A. NELSON

Electrical Engineers

CENTRAL WORKS, CORPORATION STREET
 ST. HELENS — — LANCs.

Telephone: St. Helens 26819

Programme written and edited by Basil Lowe
 Pictures by courtesy of the RUGBY LEAGUER.