

Oldham

4

- 1 MURPHY, M.
- 2 ELLIOTT, M.
- 3 LARDER, P. *2 goals*
- 4 WAINWRIGHT, T.
- 5 BARTON, E.
- 6 TREASURE, D.
- 7 McCONE, M.
- 8 ~~ASHCROFT, K.~~ *B. Hughes*
- 9 TAYLOR, K.
- 10 McCracken, W.
- 11 HALL, F.
- 12 WELDING, R.
- 13 BROWN, R.
- 14 BLAIR, J.
- 15 REYNOLDS, J.

Referee:
G. F. Lindop (Wakefield)

Widnes

10

- 1 DUTTON, R. *3 goals*
 - 2 PRESCOTT, G.
 - 3 GEORGE, J.
 - 4 ASPEY, M.
 - 5 KARALIUS, A.
 - 6 O'NEILL, J.
 - 7 ~~ASHTON, J.~~ *or BOWDEN R.*
 - 8 MILLS, J.
 - 9 ELWELL, K.
 - 10 SHERIDAN, B.
 - 11 ~~FORAN, J.M.~~ *Woods*
 - 12 ~~WOODS, M.~~ *or ADAMS, M. try*
 - 13 LAUGHTON, D.
 - 14 *J. Ashton*
 - 15 *J. Ashton drop goal*
- K. Ashall (Prescott) Orange
E. Glazebrook (Wigan) Red

OLDHAM MAN OF MATCH

Fill in the coupon below to nominate the Oldham player, who in your opinion was the most outstanding in today's match,

Drop your voting slip in at the Secretary's office, or Souvenir Shop, on your way home, or post it to reach us no later than 3 days after the game to "Man of the Match" The Pavilion Watersheddings, Oldham.

Name

Address

.....

The Man of the Match

✓
WIDNES

was *Kevin Taylor*

OLDHAM PLAYER OF YEAR

At the end of the season, the player who has received most Man of the Match votes over the whole season will become Oldhams Player of the Year.

All voting slips will be kept, and the Player of the Year will be asked to draw one out at random when he receives his award. The lucky voter will receive a £20 cash prize, so don't forget your name and address when you cast your vote — YOU could be on a winner as well as the player for whom you vote.

xx Only voting slips from the Oldham programme will be accepted — plain paper votes will be void.

VOTED MAN OF MATCH
v ROCHDALE R. BROWN
v WHITEHAVEN R. WELDING

TODAY'S MATCH BALL
presented by
KALES
(Manufacturing Jewellers)
LTD

061 834 3518

OLDHAM

v

WIDNES



Bobby Welding, our big, hard-working second-row forward, had a splendid game against Whitehaven. He is pictured here, tackled by Tom Gainford.

(Picture by courtesy of the Evening Chronicle.)

Sunday 9th MARCH
kick-off 3.30 pm
74-75 8p

J. M. KERSHAW

(JOINERS & BUILDERS) LTD

Members of The Master Builders Federation

Offices: LITTLEBANK STREET . OLDHAM

Telephone 061-652 2499

Works: TAURUS STREET . OLDHAM

PARAMOUNT PACKING CASE MAKERS LTD

FOR ALL YOUR PALLET REQUIREMENTS

WHITFIELD MILL - MILLFOLD - WHITWORTH - ROCHDALE

Telephone Whitworth 3326

OLDHAM OUTLOOK

WELL, here we are back in the third round of the Challenge Cup for the second time in three years. Today, we welcome Widnes to Watersheddings for what is invariably a high-class match between the two teams.

The Chemics, who won the Lancashire Cup and reached the final of the Player's No. 6 Trophy, were last here early on in the season when they progressed to the second round of the county cup competition thanks only to a try by Eric Hughes, running off Brian Hogan, in the last few minutes.

If this afternoon's game is as good as that one, or indeed as good as several first-class encounters between Oldham and Widnes in the last few years, then the big crowd should be in for a treat.

* * *

SECONDARY POOL

WITH only a few matches left in the current season, our popular Timed Try competition must inevitably come to an end. Results of the weekly competition, of course, are based on the official times, as recorded by the match timekeepers, of tries and goals. Clearly, it's the sort of money-spinning competition that cannot continue once the season is over.

We are, therefore, pressing ahead with a new, secondary pool to augment our main Three 'N One competition. The Timed Try has proved a tremendous success which indicates a definite need for some form of ticket competition.

The feelings of agents seem to clearly show that a bingo-type pool would be the most popular. We have recently been visiting other clubs and studying their money-raising methods. After careful thought, incorporating the knowledge we have from our own efforts in the past and the tips we have picked up on our travels, we have produced a combination of pools that ensures another outstanding winner.

Having established that we can run a secondary pool successfully, and having established that there is a positive need for a good ticket in Oldham, we have decided on the following features:

- A ticket that contains bingo, lucky numbers, fruit symbols, and Green Shield stamps.
- Prize money of more than £200 a week with unclaimed money distributed through a special TV draw as and when it reaches sufficient value.

Further details will be available at a big Agents' Night to be held next Thursday, March 13th at 8-30 p.m. in the Vice-Presidents' Lounge.

This is going to be another big night for agents so please try and come along.

LEIGH MATCH

AS you will doubtless have read in the Press, the Leigh match at Watersheddings next weekend has been brought forward from Sunday to Saturday, with a 3 p.m. kick-off.

This was done at the request of the Rugby League, who wish to keep the Sunday free of League matches because of the England-France World Championship game at Headingley.

We had two alternatives . . . playing on the Saturday or rearranging the match for later in the season as a mid-week fixture.

We didn't want to take the latter course because, with important promotion-clinching matches coming up, an anticipated appearance in the end-of-season play-off, and our interest in the Challenge Cup, the last thing we wanted was a late-season fixture glut.

TRY SCORERS

Mike Elliott 18; Dave Treasure 10; Phil Larder 9; Tony Wainwright 9; Eddie Barton 7; Dickie Brown 7; Ian Holland 4; Kevin Taylor 3; Keith Ashcroft 2; Mick McCone 2; John Paterson 2; Bob Welding, John Blair, Brian Gregory, Roger O'Mahoney, Martin Murphy, Bill McCracken, John Farrell, Brian Hughes, Jimmy Reynolds one each.

THE
SPORT FINAL

FOR ALL LOCAL SPORT

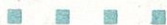
JACK BOWDEN

EXCAVATING — PLANT HIRE
DEMOLITION, DISMANTLING ENGR

LEES RD, OLDHAM

Tel: 061-624 0365

AID CONSULTANTS



Can you calculate 8% VAT in your head?

We can supply the answer in seconds, with

TOSHIBA, TOTALIA, MELCOR, REMINGTON, ADLER
OLYPMIA, SUMMIT, ANITA AND LAGO CALCULATORS



Bamford Street Works, Rochdale

Telephones: Rochdale 38974 or 061-624 1628



**Grünhülle
Lager**

Brewed in the Barbarian Way

PARKCAKE Bakeries LTD.
ASHTON ROAD - OLDHAM**QUALITY CAKES**

SPECIALISTS IN SLAB CAKE, FAMILY CAKES & SWISS ROLLS

Tel. 061-633 1181 Telex.: 668738 Telegrams: Parkona

ARTHUR GOSS & SON**"THE MAN'S SHOP"**

- ★ QUALITY MEN'S WEAR BY THE BEST MAKERS
- ★ READY TO WEAR SUITS BY 'DAKS', 'MAENSON', & 'SUMRIE'
- ★ RAINCOATS BY 'BURBERRY', 'DRIWAY', & 'NICHOLSON'
- ★ CLUB COLOURS A SPECIALITY

RHODES BANK, OLDHAM — Tel.: MAI 2086

WE WILL **TACKLE**ALL YOUR PLUMBING PROBLEMS **TRY**
TO SOLVE YOUR HEATING PROBLEMSAND MAKE YOUR NEW BATHROOM OUR **GOAL**USE YOUR **LOOSE ARM**

TO GIVE US A RING AT

061-652 4005 **K. TAYLOR****FOR BEER AT ITS BEST**

EILEEN & BERT INVITE YOU TO CALL AT

THE PUB THE PLAYERS USE

PRINTERS ARMSOLDHAM ROAD
DENSHAW
Tel: Saddleworth 4248

(Two miles from motorway on the way to the Ground)



VERY early on in the season, in one of my first articles in the Oldham programme, I said that as far as promotion to Division One was concerned we shouldn't count our chickens . . .

I suppose that still applies, though after the two hard-earned and valuable promotion points we picked up last Sunday against Whitehaven, our main objective for the season—a place in the top four—now looks like becoming a reality.

The win against the Cumbrians was vital because they themselves were still in with an outside chance of going back to the top flight at the first attempt had they won at Water-sheddings.

A glance at the placings now indicates that two more points from our final four games will be sufficient to push us up. We may finish in third position but, truthfully speaking, our target right from last August has been to gain PROMOTION rather than necessarily clinch the TITLE.

Inevitably, now that we are in this strong position, our thoughts must turn to next season . . . and whether we are going to be sufficiently strong to hold our own in Division One.

Little purpose is achieved in going up if you are going to come straight down again. Of the promoted teams last year, only Bradford Northern—the Second Division runaway champions—have really made much impact in Division One.

Halifax look doomed already to go straight back down, York have got a real fight on their hands to stay up, and even Keighley, after their magnificent start to the season, are now struggling to hold their own.

What a bitter disappointment it must be for a club, its management, coach, players and spectators, when it samples the joys of promotion one year and the disappointments of relegation only 12 months later!

SO WE HAVEN'T ONLY TO THINK ABOUT GOING UP—WE HAVE ALSO TO ENSURE THAT

OUR THINKING AND OUR PREPARATORY WORK IS GEARED TO STOPPING THERE.

To this end a lot of work is going on behind the scenes as we build up our resources on the playing side and plan for the future.

Junior signings are essential to make sure that new, young players are continually coming to the forefront. I believe the club committee and the scouts have done a good job in bringing to our notice a lot of promising youngsters.

Our latest signing was that of 18-year-old Stephen Herbert, a son of Norman Herbert, who used to play for Workington Town and Great Britain. We believe Stephen can go a long way in Rugby League. But he is, of course, only one of several young players we have gathered together in the "A" team.

Whether these boys come through next season to make their mark in the First Division remains to be seen. Suffice to say that we are moving, I think, in the right direction.

Unlike the Second Division there is no chance of a let-up in the main stream. Every match will be vital. Every match will be like a cup-tie: it is a cut-throat competition.

It isn't very long since Dewsbury won the League championship. Sadly, they are second from the bottom of the division now and look a sure bet for relegation. It is as tight as that.

The pressure will be on us in every match and that is why it is so vital that we have a good, strong panel of players.

One thing, I believe, is a certainty . . . we will be working just as hard, just as enthusiastically to hold our own in the top flight as we have been to do well in Division Two.

Sheer hard work by the players has put us where we are today. I have been delighted, as I'm sure you all have, at the graft and industry of the players. After all, you don't get anywhere in this life if you don't work hard.

OUR VISITORS

BY DON YATES

OLDHAM'S Challenge Cup opponents of this afternoon, Widnes, are enjoying one of their best ever seasons for apart from lying second in the First Division table, they are proud holders of the Lancashire Cup and were finalists in the John Player Trophy.

The Widnes league record stands at 14 wins and a draw from 20 matches with League double victories having been scored against Halifax (31-7 at home and 19-3 away), Bramley (21-7 home and 9-6 away), Keighley (8-0 home and 10-5 away) and Wakefield Trinity ((11-7 home and 12-8 away). Four of the five Widnes League defeats have been by a one point margin, but, in the other match, away to Leeds, Widnes crashed to a 31-3 defeat.

Not only will Oldham be out to reach the cup semi-final this afternoon, they will be hoping to gain revenge for that first round Lancashire Cup knock out by the eventual cup winners. What a thrilling finish to that match for the crowd of 2,959. Oldham had jumped into a 7-0 lead after 23 minutes and were well on top before suddenly running out of steam. After 60 minutes Widnes took the lead at 9-7 but three minutes from the end Johnny Blair kicked the equalling penalty to give what would have been a fair result. Tragically for Oldham, Widnes were not satisfied with a draw and in injury time loose-forward Bobbie Blackwood clinched victory with a try converted by Ray Dutton to give Widnes a 14-9 win.

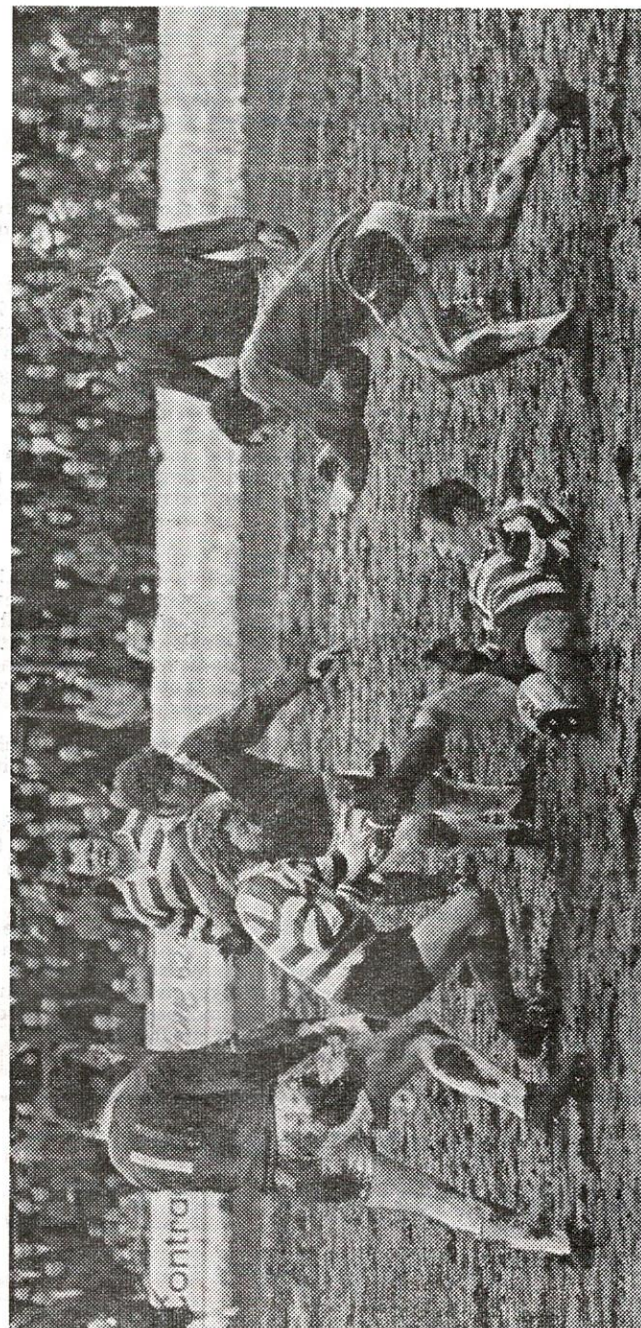
In the quarter final Rochdale should have eliminated the Chemics for they

were the better side when the two clubs met at the Athletic Grounds, but Widnes held on for a 7-7 draw. In the replay Widnes lost Jim Mills sent off but this loss seemed to inspire the other players who combined to scrape through 8-7.

Widnes were drawn away again in the semi-final when they visited Leigh in what proved to be a hard-fought match with both defences generally on top. However, Mick Adams was able to capitalise on two defensive mix-ups in the otherwise very strong Leigh rear guard and that was enough to see the Chemics through by 8 points to 5.

Widnes were worthy winners of the final against Salford which was staged at Wigan for they were always in command. During the first half, Keith Elwell (twice) and John Stephens went close to scoring and it would have been no injustice if Widnes had led by 15 points at half-time. Salford, with Mike Coulman outstanding and winning the man-of-the-match award, could not match the Widnes team work but they defended well and came back late in the game. The closeness of the scores always gave Salford a chance to pull off victory but in the end the better side won although the 6-2 final scoreline flattered Salford a little.

No doubt Widnes will be determined to add the Challenge Cup to their earlier Lancashire Cup success but Oldham will be equally determined to atone for that Lancashire Cup exit and it all points to an exciting afternoon of cup-tie thrills.



It's anybody's ball! Martin Murphy, challenged by Spanky McFarlane, prepares to pounce on the ball during the Whitehaven game. On the ground is Dickie Brown.

Picture by courtesy of the Evening Chronicle

LES

The Man behind Wales

By: Derek Gledhill, Yorkshire Post

IF enthusiasm was as infectious as it has always been reputed to be, Halifax would have no difficulty in escaping relegation, the Welsh would become World Champions and attendances at Rugby League matches would be climbing.

Listening to Les Pearce talking Rugby League for half an hour makes it hard to believe that after parting company with Leigh, he decided to call it a day so far as coaching was concerned.

True, he eagerly accepted an invitation to take charge of the Other Nationalities' side in the county Championships. It was an honour, but he regarded it as a "one off" job.

Then one night came a knock at his door, which he opened to find two Halifax directors waiting to inquire whether he would go back to Thrum Hall as coach. "No," said Les. He had retired from the game. "Definitely," he added.

"Well, help up out for just one match then, to give us time to find someone permanent," they said. "Crafty beggars," says Les. "They knew I'd not be able to resist the challenge once I started."

Sure enough, his short-lived retirement was over and his two "come-backs" have proved the stepping stones to Pearce's appointment as coach to the Welsh team, a job he is tackling with

all the fervour one would expect from a man who learned his rugby in Swansea.

Halifax found Pearce, now 48 playing Rugby Union for Swansea in 1949 and the idea of showing in his home town that Welshmen do not lose their rugby skills when they switch to League was almost as big a thrill as the thought of a trip to Australia.

He missed that honour as a player, when the competition was perhaps fiercer than today — Halifax alone had a pack of international quality.

Pearce's tactical know-how should stand Wales in good stead. All three clubs he has coached — Dewsbury, Halifax and Leigh — reached Challenge Cup semi-finals under his tuition; in addition Halifax were first winners of the Player's Trophy and Leigh won the BBC 2 Floodlit Competition.

He is confident that the Welsh side will give a good account of itself in Australia.

"We've got power in the forwards and speed in the backs. Win or lose the others will know they've had a game," he says.

Pearce is counting on traditional native pride giving his side the edge. 'Putting a Welsh lad into a Welsh jersey is like giving him an injection. It make a moderate player good and a good player great,' he says.

Mine Host - DAVID TAYLOR

FREEMASONS HOTEL

MILNROW

LUNCHES & BAR SNACKS

STEEL STOCKHOLDERS, SHEARERS
AND DECOILERS

H. STOCKWELL & CO. LTD.

ROYTON, Near OLDHAM

Telephone : 061-624 0404 (20 lines)

SEND FLOWERS ANYWHERE! ANYTIME!

THROUGH

HILTON'S

YOUR TELEFLOWER FLORIST

113 UNION ST. WEST & 188 HUDDERSFIELD RD.

Tel: 061-624 6110

OLDHAM

FRESH FLOWERS, FRUIT AND VEGETABLES DAILY

BUY THE BEST! — WE DO!

GEORGE HILL (Oldham) LTD

TIMBER MERCHANTS AND WALLBOARD DISTRIBUTORS

Imported Softwoods — Hardwoods — Plywoods — Formica
Mouldings; Doors; Dowels. Stockists of 'Weyroc' & Interwoven Fencing

SAWING, PLANING and MOULDING MILLS
TIMBER ROT PROOFED BY OUR CUPRINOL DELUGING PLANT

SCOTTFIELD SAWMILLS ASHTON ROAD OLDHAM

Tel: 061-652 7421

Central Heating Specialists

Heatsways Ltd.

Approved Installers

- ★ NO DEPOSIT
- ★ FINANCE TERMS ARRANGED
- ★ COMPETITIVE PRICES

QUALITY SYSTEMS GAS, OIL OR SOLID FUEL
178-182 Bury New Road, Whitefield

Tel. RAY HATTON 766 6511 (day) 766 4385 (anytime)

North West Storage Equipment Co.

NWS

SUPPLIERS OF

DEXION

SLOTTED ANGLE
STEEL SHELVING,
PALLET RACKING,
HANDLING EQUIPMENT
CLOTHES LOCKERS

OFFICE FURNITURE

PARTITIONING
FILING CABINETS,
STEEL DESKS,
PLASTIC & METAL BINS
TOOL STORAGE EQUIPMENT,
VAN STORAGE EQUIPMENT.

Specialists in all forms of Storage Equipment & Office Furniture

Main Distributors for Dexion, Project and Metal Details
REDCROSS STREET, WORKS,
REDCROSS STREET, ROCHDALE, LANCS.
Tel: KEITH POTTER ROCHDALE 38975/6.

Rugby League's richest prize!

Player's N°6 Trophy

The outstanding feature of every season



With over £16,000 in prize money to play for it's no wonder that the Player's N°6 Trophy is a success with the players. And the effort and skill they put into capturing the Trophy has made sure that this 5 round, 32 club knockout series is a hit with the spectators too.

The Player's N°6 Trophy really is Rugby League's richest prize—in every sense.



PNS 649

EVERY PACKET
CARRIES A GOVERNMENT HEALTH WARNING

OLDHAM RUGBY LEAGUE FOOTBALL CLUB
(The Pavilion, Watershedding, Oldham)

President: P. V. ASHWORTH
Chairman: A. WALKER

Treasurer: R. HARTLEY
Vice-Chairman: J. HALL

Committee:
T. ADLER, R. HATTON, D. HULME, J. BOWDEN, C. FARNWORTH, K. POTTER.
Secretary: K. WILKINSON
Coach: J. CHALLINOR

FIXTURES 1974-75

Aug. 17—Rochdale (Law Cap) Home 27-15	Aug. 24—Blackpool Away 20- 2
.. 24—Blackpool Home 17-13	.. 30—Widnes (7-30 p.m.) Away 13-10
Sept. 1—Widnes (3-15 p.m.) Home 9-14	Sept. 7—Blackpool Home
.. 8—Blackpool Away 13- 5	.. 13—Salford (7-30 p.m.) Away
.. 14—Huddersfield Home 11-15	Oct. 5—Rochdale Home
.. 20—Hull K.R. (7-30 p.m.) Away 8-17	.. 12—Wigan Away
Oct. 6—N. Hunslet (3-30 p.m.) Away 24- 7	.. 19—St. Helens Away
.. 12—Hull Home 10- 5	.. 26—Huyton Home
.. 18—Whitehaven (7-00 p.m.) Away 10- 2	Nov. 2—Swinton Away
.. 26—Huyton Home 18- 7	.. 8—Warrington (7-30 p.m.) Away
Nov. 3—Swinton Away 7-15	.. 23—Widnes Home
.. 16—Workington Home 7-11	.. 30—
.. 24—Doncaster (2-30 p.m.) Away 18- 3	.. 14—
.. 30—Batley Home 17- 2	.. 21—
Dec. 8—Workington (2-30 p.m.) Away 20- 7	.. 26—
.. 14—Hull K.R. Home 15- 6	.. 28—Huyton Home
.. 26—Huddersfield Away 11-12	Jan. 4—
.. 29—Huyton (2-30 p.m.) Away 22-12	.. 11—
Jan. 4—New Hunslet Home 23- 2	.. 18—Barrow Home
.. 11—Doncaster Home 23- 3	.. 25—Swinton Away
.. 17—Barrow (7-00 p.m.) Away 0-10	Feb. 1—
.. 25—Swinton Home 18- 2	.. 8—St. Helens Home
.. 15—Leigh (3-45 p.m.) Away 18- 4	.. 15—Leigh Home
Mar. 1—Whitehaven Home 17- 1	.. 22—Salford Home
.. 8—	Mar. 1—
.. 15—Leigh Home	.. 8—
.. 23—Batley Away	.. 15—Leigh Away
.. 30—Hull Away	.. 21—Rochdale (7-30 p.m.) Away
Apr. 5—Barrow Home	.. 29—
.. 12—	Apr. 5—Barrow Away
.. 19—	.. 12—Warrington Home
	.. 19—Wigan Home

POOLS

OLDHAM RUGBY DEVELOPMENT ASSOCIATION

BECOME AN AGENT NOW — GENEROUS COMMISSION
FREE SEASON TICKET — FREE WEEKLY AGENTS DRAW
AND MANY OTHER PRIVILEGES

Please contact ALAN TAYLOR at the Pools Office 'Phone: 652-5244.

SOCIAL CLUB

WHY NOT CALL IN THE CLUB AFTER THE MATCH FOR A CHAT AND A DRINK !

Friday and Saturday — LATE CABARET NIGHTS

Restaurant and Light Snacks available

'Phone: 624-7240.

ONLY THE RUGBY LEAGUER

IS DEVOTED ENTIRELY TO RUGBY LEAGUE

AND HAS BEEN FOR OVER A QUARTER OF A CENTURY
Ask your newsagent to order your copy today or complete the order form for delivery to your home.

TO THE PUBLISHER, RUGBY LEAGUER, 164 COLLEGE STREET, ST. HELENS, LANCs, NA10 1TT.
You save money by taking the full-season's subscription.

PLEASE POST RUGBY LEAGUER TO ME
EACH WEEK FOR 13 WEEKS (90p) 26
WEEKS (£1.80) FULL SEASON (£2.60)
As the Leaguer is not published during the
close season the subscription will continue
into the following season until the expiry
date.

ENCLOSE REMITTANCE VALUE

NAME _____

ADDRESS _____

(BLOCK LETTERS PLEASE)
(Delete words not applicable)

**EVERY WEDNESDAY
THROUGHOUT
THE SEASON**

4p

OVERSEAS RATES AUSTRALIA & NEW ZEALAND
13 weeks (£1.80) 26 weeks (£3.60) season (£5.80)

