

WIN FREE BEER FOR A YEAR



'Burtonwood Best Bitter - the best in the North!'



Test your Rugby League Skill

1st prize: Free beer for a year - a pint a day in the pub of your choice.

2nd prize: 50 pints of beer in the pub of your choice.

plus 25 consolation prizes of a crate of Top Hat!

How to enter

On the photograph, the Rugby Ball has been removed. Using your skill and judgement decide the most likely place the ball would be and mark the position with a cross. Whoever places the ball closest to where our panel of experts decide it should be will be judged the winner.

Then fill in your name and address and hand your entry in at the bar of your Burtonwood Pub or Club. Closing date November 7th 1976.

RULES

- 1) One entry per person only.
- 2) The judges decision is final. Judges will be impartial experts appointed by Burtonwood Brewery (Forshaw's) Ltd., hereinafter called the Company.
- 3) Employees of the company and its agents, or their relatives are ineligible.
- 4) All entries become the property of the Company.
- 5) All entrants must be over eighteen years of age when they enter.
- 6) No correspondence will be entered into.
- 7) "Free beer for a year" means 365 pints of beer served in the Burtonwood public house nominated by the winner. Any beer unclaimed one year after the presentation of the prize will be forfeit. Pints need not be claimed daily and may be allowed to accumulate, but such accumulated quantities will be served in any one session at the discretion of the landlord.
- 8) The accumulation rule and discretion of the landlord will apply to the second prize of 50 free pints of beer also.
- 9) Winners will be notified by post, and results of the competition will be published in the Competitors Journal.

Name _____

Address _____

I would like my free beer at _____

(Pub or Club)

I have read the rules and agree to abide by them.

Signed _____

Printed by N. Simmonds, Clarkes Lane Works, Rochdale

Centenary Season

OLDHAM v BATLEY

SUNDAY 24th OCTOBER

Kick Off 3-30 p.m.

TODAY'S MATCH BALL

presented by
T. WOOD & SONS DEMOLITION
(NORTH WEST) LTD
New Willow Mill
Oldham
Tel. 652 8131

10p

OLDHAM RUGBY LEAGUE FOOTBALL CLUB
THE PAVILION, WATERSHEDDINGS, OLDHAM

President: H. V. ASHWORTH

Chairman: A. WALKER

Treasurer: R. HARTLEY

Vice-Chairman: J. HALL

Committee:

A. ADLER, J. BOWDEN, K. BROADBENT, R. HATTON, D. HULME, K. POTTER

Secretary: K. WILKINSON, Tel. 061-624 4865

Promotions Manager: A. TAYLOR, Tel. 061-652 5244

Social Club Manageress: Mrs. F. BOWDEN, Tel. 061-624 7240

Coach: J. CHALLINOR

Assistant Coach: K. WILSON

Physiotherapist: F. NAVESEY

Assistant Physiotherapist: B. CHURM

Groundsman: W. BUCKLEY

Assistant Groundsman: A. WOOLLEY

HONOURS

Rugby League Championship Play-off winners: 1909-10, 1910-11 and 1956-57.

Runners-up: 1906-07, 1907-08, 1908-09, 1921-22 and 1954-55.

First Division Champions: 1904-05.

Second Division Champions: 1963-64.

Rugby League Challenge Cup winners: 1898-99, 1924-25, 1926-27.

Runners-up: 1906-07, 1911-12, 1923-24 and 1925-26.

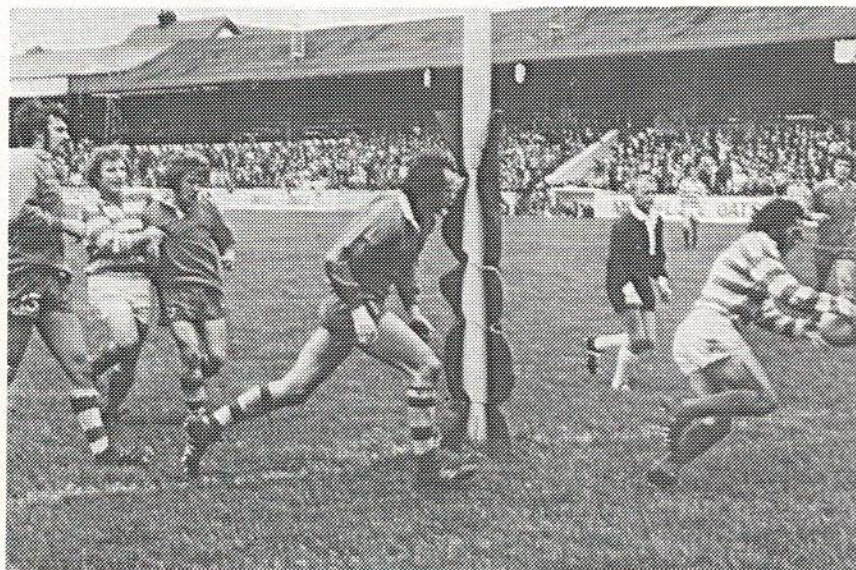
Lancashire Cup winners: 1907-08, 1910-11, 1913-14, 1919-20, 1924-25, 1933-34, 1956-57, 1957-58 and 1958-59.

Runners-up: 1908-09, 1911-12, 1918-19, 1921-22, 1954-55, 1966-67 and 1968-69.

Lancashire Championship winners: 1907-08, 1909-10, 1921-22, 1956-57 and 1957-58.

Runners-up: 1908-09, 1910-11, 1911-12, 1919-20, 1923-24 and 1954-55.

Lancashire Shield winners: 1975-76.



David Treasure is really beginning to run-in the tries. This one behind the sticks, against Barrow in the last home match, was his fifth of the season and he has now crossed opponents' try lines in each of the last three matches.

Picture courtesy of the EVENING CHRONICLE.

OLDHAM OUTLOOK

WE must take this opportunity of congratulating our players on their tremendous performance in defeat at Castleford last week-end.

Though beaten for ball, heavily in the first half, our boys put up a terrific defensive display to restrict Castleford to 11 points—their smallest total in all matches this season.

Perhaps the biggest tribute to their courage and their industry was the way in which the Castleford fans rose to applaud them off the pitch and generally agreed that Oldham were the best side to visit Wheldon Road this season.

And who were there before us? Leeds, Leigh and Rochdale. Indeed, a fine performance and congratulations to all concerned.

That brings us to today's game and the appearance here of Batley in the first round of the Player's No. 6 Trophy.

A further 13 per cent increase in prize money, bringing the total to a record £25,600, is this year's sponsorship for the No. 6 Trophy which makes it the biggest and richest of the sponsored tournaments.

The increase, which amounts to £2,800 more than the previous season's total, will be divided among the clubs knocked out in the first, second and quarter-final rounds. The rewards for those reaching the semi-final and final will be unchanged.

This means that first-round losers will get £400, compared with £300 previously, second-round losers will get £550, compared with £450, and quarter-final losers will stand to pick up £700—an increase of £100 on last year's figure.

The semi-final losers pick up an unchanged £1,500, with the runners-up receiving £5,000 and the winners £6,000 and the Player's No. 6 Trophy.

Previous winners of the trophy were Halifax, Leeds, Warrington, Bradford and Widnes with the respective runners-up Wakefield, Salford, Rochdale Hornets, Widnes and Hull.

The second round is to be played on the week-end of the 5th, 6th and 7th of November.

This means that we meet Bradford here next week in the big centenary match, then travel to Hull for the second round of the Floodlit Trophy on Tuesday, November 2nd and then, providing we win today, face up to the second-round hurdle in the Player's competition.

May we draw your special attention to next week-end. The match against Bradford falls nearest to the date of the first recorded match 100 years ago against Stalybridge and we are trying to make it an occasion to remember.

All ex-players of the club have been invited to the match and we hope that as many fans, supporters and friends of the club as possible will make a special effort to attend.

Bradford are going great guns this season; they are bound to have a big following; and as it is 100 NOT OUT for Oldham let's make it one of those occasions, together, that will be remembered for many years to come.

YOU'LL FIND ALL THE OLDHAM LOCAL SPORT

IN DEPTH

IN MONDAY'S

OLDHAM EVENING CHRONICLE



Treasure again—this time he has put down the ball behind the sticks at Castleford. He turns to find Tony Wainwright ready to offer him congratulations.

Picture by courtesy of the EVENING CHRONICLE.

The following publications are available from the Rugby League:

COACHING WALL CHART: Price £1 plus 15p postage/packing.	LAWS OF
THE GAME: Price 10p plus 10p postage/packing.	MANUAL OF RUGBY
LEAGUE COACHING: Price 15p plus 10p postage/packing.	JOHN PLAYER
RUGBY LEAGUE YEAR BOOK: Price £2.95 plus 40p postage/packing.	RUGBY
LEAGUE OFFICIAL GUIDE: Price 50p plus 11p postage/packing.	RUGBY
CAR STICKER: Price 10p plus 10p postage/packing.	
SPORTS HOLDALLS: Price £3.50 plus 70p postage.	

WE STILL REQUIRE MORE POOLS AGENTS

WHY DON'T YOU BECOME ONE AND HELP THE CLUB IN THE BEST PRACTICAL WAY?

WE HAVE TWO GREAT POOLS—THE WEEKLY DRAW AND BINGO. SELLING EITHER QUALIFIES YOU FOR A

FREE SEASON TICKET
GENEROUS COMMISSION
FREE WEEKLY AGENTS DRAW
BONUS ON WINS
FREE SOCIAL EVENINGS

CALL AT THE POOLS OFFICE AFTER THE GAME AND ASK FOR FURTHER DETAILS.

Oldham FC Down the Years

No. 4

by TOM WEBB

IN 1879-80 ABRAHAM FLETCHER played for Lancashire against Cheshire at Whalley Range, Manchester. The club had a Grand Floral and Art Exhibition at the town hall and Joseph Burgess, the Oldham poet, composed a poem especially for the occasion.

The name of Joe Platt is perpetuated at the rugby ground at Bower Lane, Hollinwood. He joined Oldham on October 16th, 1880, soon afterwards becoming club treasurer.

Later he became the first secretary of the Northern Union and along with two or three others he was the architect of the new body.

The ground was purchased in 1911 by the British Playing Fields Society, a subsidiary of the Rugby League who still own the ground although the Oldham club act as trustees.

When Oldham met Broughton Rangers the opposition was known as "Mrs. Boardman's Boys" from the fact that they had their headquarters at her hotel in the Wallness Road.

In the game with Swinton, Oldham turned up one short and a follower, J. Whitehead, made up the number. He borrowed a blue jersey for the occasion but as the Lions kept passing to him they insisted that he wore a white handkerchief round his arms. This also proving ineffective, he had to play in his undershirt.

In 1882-83 season Harry Court played for Lancashire with J. T. Walkden, Kent, Wild, Barlow and Stott being considered men likely to reach county standard. Barlow joined Court in the Lancashire side in the following season, as did J. B. Rye.

Oldham were stronger forward than any team in Lancashire or Yorkshire during the captaincy of R. H. Selby. His pack included H. Mallalieu, W. T. Kent, J. B. Rye, W. Cooper, H. Court and J. Clark with others of almost similar status in W. Wild, T. Gorton, J. Johnson, R. Taylor and J. R. Ripley.

Robert Stott of the Alexandra Mills was club president in 1883-84. In one match that season three Oldham men dropped on a ball over the goal line to score a try, the scorers for the game reading Kent goal, Johnson try and Buckley or Taylor or Aspinall try. In the game with Broughton, Barlow kicked a ball off the floor, as it was in play, to kick a goal and this was known as a field goal.

The Australians still use the term "field goal" for what we refer to as a dropped goal.

Cheetham came to play in a snow storm and when their players saw the conditions two of them refused to strip. To allow the game to be played it was arranged that the match would end as a draw no matter what the score. Oldham were a try and two minors ahead when the game ended, but only drew.

In 1884-85 Oldham played Askham-in-Furness and both games ended in a scoreless draw. John Potter, one of the two vice-presidents, had been one of the founders of both the Oldham Cricket and Football Clubs.

The match with Mossley on January 8th, 1885 attracted a record crowd of 6,000 with takings of £78—also a record for the club. The club had an increase in the number of vice-presidents to 27 so that many of the town's leading industrialists could become associated with the club in an official capacity.

The club dressed at the Frienship Hotel, Mumps, but the ground was still at Clarksfield. The club had moved to Clarksfield in the 1878-79 season.

A year later the Mossley game again attracted a record crowd and the takings were up to £80 9s. Items on the balance sheet included beer and lemons just under £6, seeds £1 5s. 4d., half gate to Birch £2 11s., telegrams and postage £12 19s., foot-balls £5 17s., repairs £5 17s. 1d., referees £14 and accident insurance £38 10s.

In 1887 Oldham and Rochdale Hornets played at Raikes Hall, Blackpool—a propaganda match that helped to establish rugby clubs at Blackpool and Fleetwood. The value of a goal outweighed any number of tries at this time as Oldham "A" found to their cost when running in nine tries to one goal by Broughton Rangers "A".



The Paint Specialists

MOUNT PLEASANT INDUSTRIAL ESTATE
LEES ROAD . OLDHAM

061-652 3129



OLDHAM MOTOR CO. LTD.



MAIN FORD DEALER
SINCE 1911

TEL.: 061-652 2411

Arthur Goss & Son

"THE MAN'S SHOP"

- ☆ Quality Men's Wear by Best Makers.
- ☆ Ready to Wear Suits by "Daks", "Maenson" and "Sumrie".
- ☆ Raincoats by "Burberry", "Driway".

RHODES BANK, OLDHAM
Tel.: 624 2086

YOUR TELEFLOWER FLORIST

HILTONS

061-624 6110

188 HUDDERSFIELD ROAD
113 UNION STREET WEST
CHOICE FLOWERS
ALWAYS!

Oldham

- 1 MURPHY, M.
- 2 ELLIOTT, M.
- 3 BARTON, E.
- 4 WAINWRIGHT, A.
- 5 LUND, S.
- 6 BLAIR, J.
- 7 TREASURE, D.
- 8 OWEN, G.
- 9 TAYLOR, K.
- 10 TAYLOR, I.
- 11 WELDING, R.
- 12 HERBERT, S.
- 13 REYNOLDS, J.
- 14
- 15

Referee:
G. F. LINDOP
(Wakefield)

T G Dg P

Batley

- 1 KEEGAN, A.
- 2 RICHARDSON, J.
- 3 RIPPON, D.
- 4 JAMESON, P.
- 5 WHITTAM, I.
- 6 NORTH, C.
- 7 DEAN, T.
- 8 GRINHASS, S.
- 9 EYRE, J.
- 10 TAYLOR, B.
- 11 BROOKE, D.
- 12 MEILLAM, B.
- 13 WATTS, A.
- 14 HEPWORTH, E.
- 15 HUDSON, B.

E. Glazebrook (Wigan) Orange
K. Ashall (Prescott) Red

T G Dg P

Greenwood St. Stores

(behind Hill Stores)

FOR THE BEST IN 2nd-HAND
FURNITURE AT PRICES YOU
CAN AFFORD

PHONE: 624 3642

Seton Products

Support
OLDHAM RLFC
By donating our Elastic
Support Bandages etc.

TRAVEL AS THE TEAM DOES

by . . .

G. BARLOW & SONS LTD.

19 UNION STREET WEST — OLDHAM

Telephone: 624 4301

Norman Lester & Co

ESTATE AGENTS & VALUERS

9 UNION STREET — OLDHAM

Telephone: 061-620 2235/6 (Evenings Saddleworth 2794)

OUR VISITORS

BY DON YATES

THIS afternoon Oldham begin their quest for the John Player Trophy with a game against Second Division Batley and they must feel supremely confident of victory after winning four of their last five games including that 33-0 victory over Barrow in their last match at Watersheddings which, incidentally, was their biggest win since March 1973 when they won 55-3 at Blackpool (writes Don Yates). The results of the Second Division matches between these clubs two seasons ago also indicate an Oldham victory for during that campaign Oldham won 31-5 at Batley after defeating them 17-2 at Watersheddings in a match which drew Oldham's smallest ever home first team gate of a mere 716 spectators.

Batley's last victory over Oldham took place at Mount Pleasant in March 1970 when they won a game which was originally scheduled for the previous Christmas by a margin of 13 points to five. The game fell in that disastrous spell during the 1969-70 season when Oldham went from 1st November to 15th April without winning a single League match. In fact, they lost 19 successive League games and ended the season in joint bottom place in the League having won only six matches and having conceded a mammoth 673 points in all games. I doubt if Ken Wilson would tolerate that sort of defence from his present first team squad!!! Although Wilson was a first team regular in that 1969-70 season, he missed the defeat at Batley when only two players who are expected to appear for Oldham this afternoon played. The Batley side has also changed considerably from the side which lined up just over six years ago and which contained Stan Gittins, the England Under-24 international, Tommy Martyn, now starring with Warrington, Terry Gorman, who had a spell at Oldham before joining Huyton, and Phil Holmes who started this season on loan at Watersheddings. The two teams were:

BATLEY: Stan Gittins; Geoff Marsh, Keith Toohey, Phil Holmes, John Cooke; Alan Watts, Terry Gorman; Trevor Walker, Kevin O'Hara, Brian Tyson, John Fox, Tommy Martyn and Phil Doyle. Substitutes: Trevor Oldroyd (for Watts) and John Bell (for O'Hara).

OLDHAM: Martin Murphy; Phil Larder, Joe Collins, Terry Garrett, Tommy Davies; Gordon Worswick, Cliff Sayer; Ken Payne, Kevin Taylor, Joe Dunne, Bob Irving, Ray Hicks and Colin Standing. Substitutes: Brian Clarke (for Sayer) and Steve Baldwin (for Standing).

In contrast to Oldham, whose playing record during the 1969-70 season was the worst in the history of the club, Batley, at that time, were enjoying a comparatively successful campaign in which they ended the season in 17th position, their best placing for 10 years and because of this mini revival Batley attracted a crowd of 2,488 to this match against Oldham. In the first half Oldham played up the notorious Mount Pleasant slope but turned round at half-time level 5-5 thanks to a try from Kevin Taylor and goal from Terry Garrett. Batley's first half try scorer was Trevor Walker, who that season went on to score 17 tries which still stands as the League record haul for an open side prop forward. With the advantage of the slope in the second half, Oldham were confident of victory but, alas, they were unable to breach the Batley defence whilst the home side were able to clinch the points with four second half goals. The five Batley goals in the match came from Keith Toohey (3), Stan Gittins and Terry Gorman.

Oldham's record run of successive defeats ended with the final match of the season when Batley lost here at Watersheddings 9-7 and Oldham will be hoping to repeat that result in today's game, which will be the first ever meeting between the two clubs in the John Player Trophy, a competition in which neither club has gone past the second round. Perhaps this year, with a little more luck in the draw, this afternoon's winners will proceed a little further and so collect some much needed cash from the coffers of John Player, the very generous sponsors of this lucrative tournament.

SUPPORTERS' CLUB NOTES

FORTHCOMING EVENTS

The Supporters' Club are holding their Centenary Rugby Queen Dance in the Social Club on Thursday, 28th October. Various top football and rugby celebrities will be in attendance.

Entry forms for this contest are available from the Secretary, Mr. T. Heywood, 108 Hollinshall Street, Oldham, or in the Social Club. All entrants will receive a prize. Tickets are available price 50p.

Other events include a Seconds' Party of well known branded goods on Tuesday, 9th November. Tickets price 15p, and a Fashion Show, Tuesday, 23rd November. Tickets price 25p.

At both these events Christmas cards and a selection of toys can be purchased.

Tickets for any of the above events can be obtained from the canteens at today's game.

AWAY TRAVEL

A coach will be departing from the Social Club at 5-00 p.m. on Tuesday, 2nd November, for the Floodlit Cup 2nd round match at Hull.

Anyone wishing to book a seat on this coach can do so today from any of the canteens, the bar behind the scoreboard or in the Social Club after the match.

Welcome to Batley, our opponents for today, on their 50th season in Rugby League.

PAT MAHER, the Oldham Rugby League Queen, retires soon after 12 months in office, during which time she also became the National Federation of Rugby League Supporters' Clubs' Queen.

It was a title which enabled Pat to make her first visit to Wembley last May as an official guest of the Rugby Football League.

Her successor as the Oldham RL Queen will be chosen at a dance in the Watersheddings Social Club on Thursday, October 28th.

Entry forms can be obtained from Mrs. Fay Bowden, manageress of the Watersheddings Social Club, or from Supporters' Club officials at the refreshment bars on the ground on match days. Also from T. Heywood, 108 Hollinshall Street (633 4957).

The new queen will be chosen by a panel of celebrities, including stars from Rugby League, soccer and cricket. She will have the additional honour of being the club's centenary-year queen.

The Supporters' Club president, Mr. Eric Schofield, tells me: "Pat has done a tremendous job, and her successor, whoever she is, has been set a high standard to follow".

CURTAIN RAISER

Today's curtain raiser is an Under-14s match between Saddleworth School and Thornham of Rochdale.

The Saddleworth boys who will be playing in red, never played rugby before going to the school and in the Oldham Schools' League this season they have played four and won four. They are coached by our centre Phil Larder who introduced rugby to the Saddleworth School.

The Thornham team who will be playing in sky blue, do not play in a Schools' League this season as no such League exists in Rochdale.

In an endeavour to try to keep their interest going Graham Starkey our former coach is organising friendly matches for them.

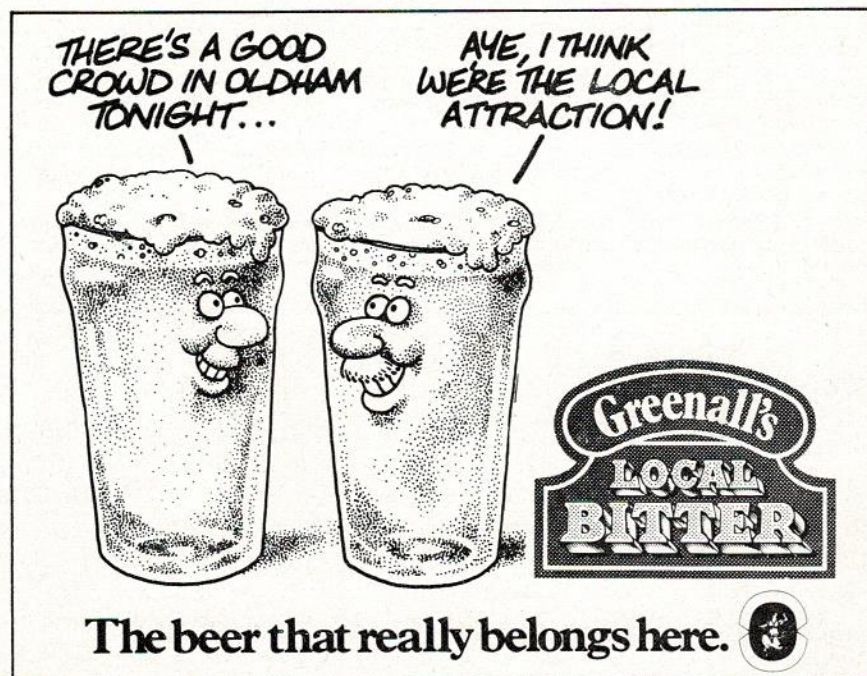
We wish both teams every success this afternoon.

OLDHAM RUGBY SOCIAL CLUB

TOP-LINE DISCO EVERY FRIDAY AND SATURDAY
FIRST-CLASS MEALS AT VERY COMPETITIVE PRICES
OPEN TILL 2 A.M.

TELEPHONE 061-624 7240

Anyone wishing to book should contact MRS. BOWDEN as early as possible



OCTOBER 31st K.O. 3.30

Oldham v Bradford

FIRST TEAM

FIRST TEAM				Mar. 12 (Sat.) Leeds (3-00)A			
Date	Opponents	Ground	F. A.	Date	Opponents	Ground	
Aug. 22 (Sun.)	1st Round County Cup-Blackpool (3-00)A		10-17	27 (Sun.)	Castleford (3-30)H		
Sept. 5 (Sun.)	Widnes (3-00)A		20-22	3 (Sun.)	Barnford N. (3-30)A		
12 (Sun.)	Leeds (3-30)H		10-18	8 (G.F.)	Salford (3-30)H		
19 (Sun.)	Leigh (3-30)A		13-19	11 (E.M.)	Hull K.R. (3-00)A		
26 (Sun.)	Wigan (3-30)H		23-20	17 (Sun.)	Warrington (3-00)A		
Oct. 3 (Sun.)	Wakefield T. (3-30)A		13-11	24 (Sun.)	Widnes (3-30)H		
10 (Sun.)	Barrow (3-30)H		33- 0				
15 (Fri.)	Castleford 7-30)A		5-11 1976				
23/24 (Sat./Sun.)	Player's No. 6 1st Round			Date	Opponents	Ground	
31 (Sun.)	Bradford N. (3-30)H			Aug. 21 (Sat.)	Huyton L.S. (3-00)A		
Nov. 6/7 (Sat./Sun.)	Player's No. 6 2nd Round			28 (Sat.)	Huyton L.S. (3-00)H		
14 (Sun.)	Barrow (2-30)A			Sept. 4 (Sat.)	Widnes (3-00)H		
21 (Sun.)	St. Helens (3-30)H			18 (Sat.)	Leigh (3-00)H		
28 (Sun.)	Workington T. (3-30)H			25 (Sat.)	Wigan (3-00)A		
Dec. 5 (Sun.)	Featherstone R. (2-30)A			Oct. 2 (Sat.)	Swinton (3-00)H		
12 (Sun.)	Featherstone R. (3-30)H			9 (Sat.)	Barrow (2-30)A		
19 (Sun.)	Wigan (3-00)A			15 (Fri.)	Widnes (7-30)A		
26 (Sun.)	Rochdale H. (3-30)H			Nov. 13 (Sat.)	Barrow (3-00)H		
1977				20 (Sat.)	St. Helens (3-00)A		
Jan. 2 (Sun.)	Salford (3-00)A			27 (Sat.)	Workington (2-30)A		
9 (Sun.)	St. Helens (3-00)A			Dec. 18 (Sat.)	Wigan (3-00)H		
16 (Sun.)	Leigh (3-30)H			1977			
23 (Sun.)	Workington T. (2-30)A			Jan. 8 (Sat.)	St. Helens (3-00)H		
30 (Sun.)	Wakefield T. (3-30)H			15 (Sat.)	Leigh (3-00)A		
Feb. 6 (Sun.)	Hull K.R. (2-45)A			22 (Sat.)	Workington (3-00)H		
12/13 (Sat./Sun.)	Challenge Cup 1st Round			Feb. 5 (Sat.)	Huyton (3-00)H		
20 (Sun.)	Warrington (3-30)H			18 (Fri.)	Warrington (7-30)A		
26/27 (Sat./Sun.)	Challenge Cup 2nd Round			25 (Fri.)	Rochdale (7-30)A		
				Mar. 12 (Sat.)	Warrington (3-00)H		
				19 (Sat.)	Swinton (3-00)A		
				26 (Sat.)	Huyton (3-00)A		
				Apr. 9 (Sat.)	Rochdale (3-00)H		

"A" TEAM

Date		Opponents	Ground	F. A.
Aug.	21—(Sat.)	Huyton L.S. (3-00)	A	36-4
	28—(Sat.)	Huyton L.S. (3-00)	H	25-9
Sept.	4—(Sat.)	Widnes (3-00)	H	—
	18—(Sat.)	Leigh (3-00)	H	22-17
	25—(Sat.)	Swinton (3-00)	A	15-35
Oct.	2—(Sat.)	Swinton (3-00)	H	26-8
	9—(Sat.)	Barrow (2-30)	A	22-17
	15—(Fri.)	Widnes (7-30)	A	—
Nov.	13—(Sat.)	Barrow (3-00)	H	—
	20—(Sat.)	St. Helens (3-00)	A	—
	27—(Sat.)	Workington (2-30)	A	—
Dec. 1977	18—(Sat.)	Wigan (3-00)	H	—
Jan.	8—(Sat.)	St. Helens (3-00)	H	—
	15—(Sat.)	Leigh (3-00)	A	—
	22—(Sat.)	Workington (3-00)	H	—
Feb.	5—(Sat.)	Huyton (3-00)	H	—
	18—(Fri.)	Warrington (7-30)	A	—
	25—(Fri.)	Rochdale (7-30)	A	—
Mar.	12—(Sat.)	Warrington (3-00)	H	—
	19—(Sat.)	Swinton (3-00)	A	—
	26—(Sat.)	Huyton (3-00)	A	—
Apr.	9—(Sat.)	Rochdale (3-00)	H	—

FURNITURE **CARPETS**
LITTLEMOOR MILL CARPETS

OFF RIPPONDEN ROAD, OLDHAM

Telephone 620 9866

YOUR OWN LOCAL COMPLETE HOUSE FURNISHERS

PLEASE NOTE

On any purchase over £25 one programme only can be utilised as a £5 voucher.