

**WHITEHAVEN RUGBY LEAGUE CLUB
FIXTURES 1977-78**

AUGUST		F	A	DECEMBER	
21—Blackpool (FLC1)	A	24	6	4—Blackpool	A 6 16
28—Wigan (FLC2)	A	8	52	10—Huddersfield	H 9 5
				27—Barrow	A 6 12
SEPTEMBER				JANUARY	
4—Batley	A	23	8	8—Doncaster	A 20 22
10—Rochdale H.	H	5	7	15—Leigh	H 10 5
18—Keighley	A	Post.		29—Huyton	H 3 3
24—York	H	11	11		
OCTOBER				FEBRUARY	
2—Rochdale H.	A	1	15	5—Huyton	A 3 7
4—Salford (Floodlit Trophy 1st Round)	H	5	6	26—Wakefield (Cup)	H 13 21
9—Halifax 3.30 k.o.	A	21	16		
15—Batley	H	10	6	MARCH	
23—Huddfield No. 6	A	13	33	5—York	A 7 14
30—Oldham	A	14	17	19—Leigh 3-30 k.o.	A 2 7
				27—Barrow	H 9 5
NOVEMBER				APRIL	
6—Players No. 6 2nd Rd.				2—Swinton	H 5 17
12—Halifax	H	26	4	5—Blackpool	H 15 7
20—Huddersfield	A	Post.		9—Oldham	H
26—Keighley	H	6	11	16—Swinton	A
				12—Huddersfield	A
				23—Doncaster	H

**From Nuts and Bolts to Plasma
Welding and Cutting Equipment
We Supply it all**

- ☆ B.O.C. MAIN DISTRIBUTORS
- ☆ G.K.N. STOCKISTS
- ☆ PROTECTIVE CLOTHING AND SAFETY EQUIPMENT
- ☆ PLUS EVERYTHING FOR THE WELDING INDUSTRY

DELTAWAITE LTD.
OR NORTH BRITISH ENGINEERS' SUPPLIES LTD.
CAVENDISH DOCK, BARROW
Telephone 21959 (3 Lines)

8-19
**WHITEHAVEN
RUGBY LEAGUE F.C.**

SEASON 1977-78

RUGBY

AT THE
Recreation
Ground

Sunday
April 9th

VERSUS

OLDHAM

KICK-OFF 3 p.m.

OFFICIAL PROGRAMME 10p





Chemicals from Whitehaven for
The Industry of the World

BECKSTER ENGINEERING LTD.

**ULLCOATS INDUSTRIAL ESTATE
EGREMONT
CUMBRIA**

TELEPHONE 820 895

- (1) PLATE STEELWORK FABRICATIONS (IN M.S. OR ST.ST.) INCLUDING :** —Tanks, Hoppers, Cyclones, Chutes Etc.
- (2) STRUCTURAL STEELWORKS INCLUDING :** —Buildings, Extensions, Support Structures, Gantries, Platforms and Bridges Etc. —
- (3) PIPEWORK FABRICATIONS / INSTALLATIONS** Service/Process Pipework Contracts either in M.S. or ST. ST. Etc.
- (4) MACHINING FACILITIES INCLUDING** Turning, Milling, Slotting, Boring, Shaping Screwing Etc.
- (5) PLANT INSTALLATIONS/MAINTENANCE** Contract undertaken for major plant installations and maintenance of existing plant Etc.
- (6) LABOUR** For hire either Contract or Daywork including:—Mechanical Fitters, Erectors, Welders, Pipefitters, Platers, Machinists.

**FOR ENQUIRIES
TELEPHONE 820 895**

CLUB NOTES

Good Afternoon Ladies and Gentlemen,

Welcome to the Recreation Ground where today we take on the mighty Oldham team.

It was nice to get back on the winning trail again on Wednesday after a shaky start. Colin Hall sprinted over for excellent tries and Mike McMullen scored his first for the club following excellent work by team mates John Elliot and Gordon Cottier. John McQuire kicked two penalty goals and a conversion to complete the Whitehaven score. A word of praise too, to the Blackpool team, who played some bright open rugby — They made us work hard.

The organisers of the collection held during the Barrow match in aid of the Hospitals Broadcasting Service, have asked me to say a big thank you to all who contributed.

The collection amounted to £45.82 and it will help to ensure that this useful and needed voluntary service continues. The patients at the West Cumberland Hospital appreciate it.

For the record Wednesdays match was watched by 630 spectators.

10 PENCE WEEKLY DRAW

The club are looking for agents to sell just one book of 25 tickets in the Weekly Draw. Generous commission is paid and the agent is included in an agents weekly draw.

If you can help and we really do need your help please contact Mr. T. Todd or Mr. G. Nixon at the Secretaries Office at the Kells end of the ground or Phone Whitehaven 2296.

TODAY'S GAME

Today we take on the high riding Oldham team, who narrowly defeated us at The Water Sheddings on the 30th of October last.

The score that day was Oldham 17 Whitehaven 14 and most press reports said that we were unlucky to lose the game. By all accounts it was a thriller and we expect the same to be true today.

Oldham have been consistent all season, never dropping out of the top four. Like Barrow and Rochdale they were demoted from Division One last season and look like going straight back. This fact would suggest that there is a world of difference between the first and second divisions, because some of last years promoted teams look like returning to division two next term.

With Whitehaven playing inconsistently, the match, on the face of it, looks like it should go Oldham's way. However, part of Whitehaven inconsistency is their ability to lift their standard of play against better class opposition; as for instance against Salford, Wakefield, Barrow and Oldham. Add to this ground advantage and match will be much closer than the respective records of teams suggest.

No forecasts this time, sufficient to say "It will be a good match and the best team, on the day, will win."

YOUR REFEREE FOR TODAY

Mr. Kevin Allatt who comes from Huddersfield takes the position of senior official today.

Mr. Allatt is married with a son and daughter and works as a field sales manager in the packaging industry. He lists keeping fit and sports in general as his main spare time fillers.

He passed his Referees Examination in 1963 and was promoted to Grade 2 in 1970 and Grade 1 in 1972.

His honours include Castleford v Australia in 1973 and Lancashire v Yorkshire in 1975.

He played Rugby League in the amateur ranks before taking up refereeing.

HAMBLINGS FROZEN FOODS

58a, ROPER STREET
WHITEHAVEN
Tel. Whitehaven 3473

FOR THE FINEST SELECTION
OF FROZEN FOODS
at **Competitive Prices**

We Sell Most Makes of Refrigerators,
Deep Freeze Cabinets and
Fridge/Freezer Combinations

Call in or Tel. Whitehaven 3473

LAKELAND MOTOR SERVICES



Ennerdale Rd. Hindpool Rd.
Cleator Moor Barrow

For your car and light
commercial repairs

PEUGEOT

Speedy service at reasonable rates
Phone 810271



Whitehaven Rugby League F.C. Limited

80, Lowther Street, Whitehaven.
Telephone: 2719

President:
D. A. A. FAGANDINI

Chairman:
Mr. J. D. WIGHAM

Vice-Chairman:
Mr. W. J. LILLY

Directors:
Mr. K. BURNS
Mr. T. TODD

Mr. G. NIXON
Mr. K. SHEPHERD

Mr. J. R. WILLS

Hon. Secretary:
Mr. G. NIXON

Hon. Club Doctor: Dr. R. C. MACFARLANE

Football Coach:
Mr. W. SMITH

HT 6-13

WHITEHAVEN

OLDHAM

	Tries	Goals		Tries	Goals	
1—JACKSON	O'BRIEN—1
2—WILKINSON	JACKSON—2
3—ELLIOT	LARDER—3
4—ROSE	WARD—4 3
5—McMULLEN	LUND—5 3
2 2 2 6—McQUIRE	BLAIR—6 2 2 2
7—HALL <i>BARNES</i>	BATES—7 3
8—HETHERINGTON	CHARLES—8
9—McCURRIE	O'MAHONEY—9
10—MARTIN	HUGHES—10
11—JACKSON	HERBERT—11
12—LITT	<i>BALL</i> FORSTER—12
13—COTTIER	FLANNAGAN—13
14—EVANS	MURPHY—14
15—GAINFORD	FORSTER—15

Referee: Mr. K. ALLATT, Huddersfield

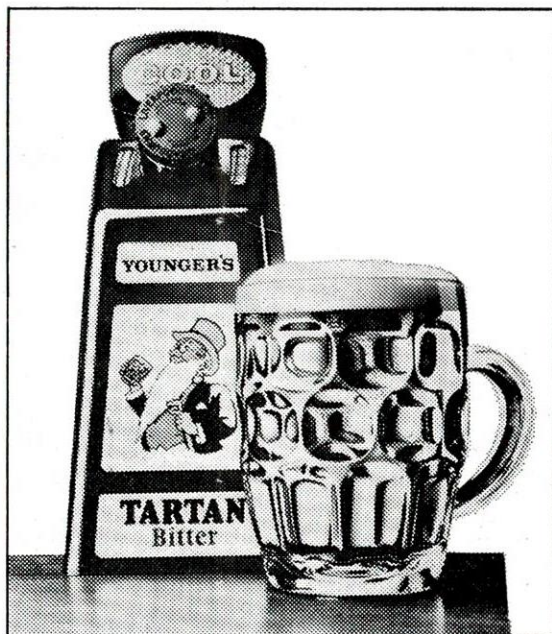
Touch Judges: J. E. HAYTHORN, G. L. HOLGATE.

NEXT HOME MATCH WHITEHAVEN v. DONCASTER

SUNDAY, 23rd APRIL, 1978

KICK-OFF 3 p.m.

Younger's Tartan Bitter.



Worth passing a few pubs for.



MILLSON ENGINEERING LTD

(Managing Director: B. Miller)

LILLYHALL INDUSTRIAL ESTATE
WORKINGTON

'phone WORKINGTON (0900) 4041 & 5931

LIGHT TO MEDIUM SUB-CONTRACT ENGINEERING
TOOLING, PRESSED TOOLS, JIGS, FIXTURES, ETC.
FABRICATIONS UP TO 3 TONS

ENGINEERING SUPPLIES AND MATERIALS ALWAYS
IN STOCK FOR PROMPT DELIVERY

SOLWAY SERVICE STATION

NEWTOWN, WHITEHAVEN

NEW AND USED CAR SALES
MECHANICAL AND BODYWORK REPAIRS
SERVICING

SHELL PETROL AND OILS

Available 7 days per week. 8 a.m. to 10 p.m. Tel. 3479



Established 1845

SHAWS FUELS LTD

Industrial, Agricultural and Domestic

Fuel Oils and Lubricants

FOR EFFICIENT SERVICE AND

COMPETITIVE PRICES

Regional Office

Mountford House
Victoria Industrial Estate
Drury Lane
Hollinwood
Oldham
061 682 7309

Local Depot

Prince of Wales Dock
Workington
Tel.: Workington 61292

1977-78 APPEARANCES AND SCORERS

Name	Apps	Subs	Tries	Goals	DGIs	Pts
K. R. Gallacher	4	—	—	—	—	—
A. Todd	14	1	5	—	—	15
J. Shimmings	13	2	—	—	—	—
J. Stewart	23	—	10	12	—	53
J. McQuire	20	1	3	31	3	74
K. S. Evans	20	3	3	—	—	9
S. Whalley	3	2	—	—	—	—
J. Pringle	3	—	—	—	—	—
A. McCurrie	27	—	13	—	4	43
R. Jackson	26	—	3	—	—	9
G. Cottier	25	1	4	—	—	12
D. Martin	7	2	1	—	—	3
T. M. Gainford	25	1	1	—	—	3
B. Rose	20	1	2	—	—	6
D. Barnes	8	6	1	—	—	3
R. Fletcher	10	2	—	1	—	2
J. I. Litt	13	5	—	—	—	—
C. Hall	22	1	8	—	—	24
J. McLean	10	1	—	—	—	—
J. Elliott	5	8	—	—	—	—
G. Crayston	1	—	—	—	—	—
K. Stewartson	2	4	—	—	—	—
D. Hetherington	16	1	1	—	—	3
K. Hodgson	4	—	2	—	—	6
P. McAlone	1	3	—	—	—	—
T. H. M. Barwise	—	2	—	—	—	—
P. Eilbeck	3	1	—	—	—	—
D. Jackson	12	1	—	—	—	—
P. Charlton	—	1	—	—	—	—
K. Wilkinson	7	—	—	7	—	14
M. McMullen	7	1	1	—	—	3

TO ORDER THE

EVENING NEWS AND STAR

THE SATURDAY SPORTS SPECIAL —

— THE SPORTSMAN'S PAPER

Tel: CIRCULATION DEPARTMENT, WORKINGTON 2458

People like you
are changing
to N°6



for Player's quality

PNS801A

MIDDLE TAR As defined in H.M. Government Tables.
H.M. Government Health Departments' WARNING:
CIGARETTES CAN SERIOUSLY DAMAGE YOUR HEALTH

LIMOUSINES FOR WEDDINGS

YEOWART'S COACHES

16, 35, 45 and 53 seaters

Available for Contract or Private Hire

Phone Whitehaven 3521 or call at
Flatt Walks for a reasonable quotation

CASTLE FORGE GARAGE
FLATT WALKS :: WHITEHAVEN

Telephone : WHITEHAVEN 3521

When your passing
have a look at our extensive range
of new and used cars, our parts and
accessories. With the support of a Ford Sure
Service you'll be in safe hands, so give us a try
we're sure you'll be converted.

Your FORD Main Dealer for West Cumberland

County Garage

WHITEHAVEN



Quay Street, WHITEHAVEN Tel 2311



We're
always on the ball!