

PROGRAMME SPONSOR

TODAY'S MATCH PROGRAMME
KINDLY SPONSORED BY

NEIL CUNNINGHAM

Teams

Watersheddings Sunday, 30th. March, 1980.

OLDHAM

Cherry/White Hoops,
Blue Shorts

1. MARTIN MURPHY
2. GEOFF MUNRO
3. PHIL LARDER
4. CLIVE HUNTER
5. ERIC FITZSIMONS
6. BILL FRANCIS
7. RAY ASHTON
8. ALEX ALEXANDER
9. RAY MARTLAND
10. STEVE HERBERT
11. BOB MORDELL
12. COLIN HAWKYARD
13. TERRY FLANAGAN

14. FRED HALL

DONCASTER

White/Blue/Gold
White Shorts

1. JOEY LOWE
2. DAVE PFLAFTER
3. PHIL DAVIES
4. JOHN BUCKTON
5. KEITH EDWARDS
6. GARRY BROOK
7. TERRY OTTAWAY
8. GRAHAM ELLIS
9. PETE MOODY
10. DON ROBSON
11. KEN ELLIS
12. JOHN SAXBY
13. STUART MATTHEWS

SUBS FROM
MICK GODFREY
DAVE HOSSELL
ALAN WORRALL

REFEREE: Mr. C. Hodgson (Cumbria)

Red Flag: Mr. K. Ashall (Prescot) **Yellow Flag:** Mr. J.E. Chamberlain
(Warrington)

NEXT MATCH AT WATERSHEDDINGS

Wednesday 9th. April, 7.30pm. Halifax.

OLDHAM

RUGBY LEAGUE



DONCASTER



GEORGE HILL

OLDHAM LIMITED

**TIMBER IMPORTERS and
MERCHANTS**

**Spouts, Architraves, Skirtings,
Timber Mouldings, Doors, Plywood,
Formica, Hillplas**

SCOTTFIELD SAWMILLS
Ashton Road, Oldham OL8 1LB
Tel: 061-652 7421

and at
Glebelands Road, Sale
Tel: 061 969 7543



OLDHAM RUGBY LEAGUE FOOTBALL CLUB OFFICIALS The Pavilion, Watersheddings, Oldham. Tel: 061-652 5244

President: H.V. Ashworth
Chairman: R. Hatton
Vice-Chairman: J. Bowden
Treasurer: K. Broadbent

Committee: E. Buckley, F. Diskin, J. Hall, D. Hulme, R. Ogden, K. Potter
Coaching Staff: Graham Starkey (Manager) Terry Gorman (Asst. Manager)
Bill Francis (Player/Coach) Bob Welding (A Team Coach)
Brian Gartland (Colts Coach)

Professional Playing Staff

Jimmy Arnold - Dennis Ashcroft - Ray Ashton - Harold Byram - Barry Conner -
Leslie Cook - Michael Coombes - Mike Cowley - Glen Crehan -
Pasquale D'Adamo - Peter Deakin - Jim Fidler - Eric Fitzsimmons -
Kevin Flanagan - Terry Flanagan - Alan Forster - Bill Francis - Dave Fricker -
Andrew Goodway - Ken Gwilliam - Fred Hall - Colin Hawkyard - Steve Herbert -
Keith Jackson - Clive Jones - Paddy Kirwan - Phil Larder - Steve Littler -
Steve Lund - Bob Mordell - Ray Martland - Geoff Munro - Martin Murphy -
Tony Newall - Chris O'Brien - Ian Ogden - Roger O'Mahoney - Kevin O'Rourke -
Gareth Owen - Johnny Paterson - Alan Platt - Ian Radcliffe - Warren Ryans -
Ian Taylor - Norman Turley - Garry Walczak - John Walls - Mike Worrall

Doctor: Dr. D. Walton **Hon. Consultant Orthopaedic Surgeon:** Mr. H. Thompson
Physiotherapist: Mr. A. Bonelle **Asst. Physiotherapist:** Mr. J. Watkins
Financial & Admin. manager: David Oakes
Commercial Manager: Keith Masters **Social Club Manager:** Kevin Wilkinson
Secretary & P.R.O. Barbara Wilde 061-624 4865
Groundsman: F. Brookes **Asst. Groundsman:** M. Bashforth

CLUB RECORDS

Record Victory 67-6 against Liverpool City April 59
Record defeat 11-67 by Hull K.R. Sept. 78
Record attendance 28,000 v Huddersfield Feb 24th 1912
Record receipts £4,897 v Leeds 3rd March 1968
Record transfer fee paid £10,650 to Workington for Ike Southward March 1959
Record transfer fee received £11,002 : 10s from workington for Ike Southward Jan 62
Record try scorer Reg Farrar 49 tries 1921/22 season
Record goal scorer Bernard Ganley 224 goals 1957/58 season
Record point scorer Bernard Ganley 28 pts v Liverpool City April 59

CLUB HONOURS

Rugby League Championship Play-off winners: 1909-10, 1910-11 and 1956-57
Runners-up: 1906-07, 1907-08, 1908-09, 1921-22 and 1954-55.
First Division Champions: 1904-05
Second Division Champions: 1963-64
Rugby League Challenge Cup winners: 1898-99, 1924-25, 1926-27
Runners-up: 1906-07, 1911-12, 1923-24 and 1925-26
Lancashire Cup winners: 1907-08, 1910-11, 1913-14, 1919-20, 1924-25, 1933-34,
1956-57, 1957-58 and 1958-59
Runners-up: 1908-09, 1911-12, 1918-19, 1921-22, 1954-55, 1966-67 and 1968-69
Lancashire Championship Winners: 1907-08, 1909-10, 1021-22, 1956-57 and 1957-58
Runners-up: 1908-09, 1910-11, 1911-12, 1919-20, 1923-24 and 1954-55
Lancashire Shield winners: 1975-76

HERE COME DONCASTER

BOTTOM-OF-THE-TABLE Doncaster come to Watersheddings today seeking only their second win of the season.

Thier one and only previous victory in a disastrous Second Division season was the recent 6 - 3 triumph against Huyton, next to the bottom, at Tatters Field. It was a magic moment for Doncaster and, as luck would have it, the television cameras were there to put the great moment on film.

Yorkshire Television are doing a series called "Once In A Lifetime" and one of the programmes is concerned with life at Tatters Field where they have been struggling for years to keep the RL flag flying in South Yorkshire.

By coincidence the cameras were there when prop Tony Banham forced his way in for the winning Doncaster try seven minutes from the end.

The try will now form one of the highlights of the television programme which will depict the sort of problems Doncaster have to endure in their brave bid to keep interest alive in the town.

As often happens when a club is up against it luck deserts them, too. And the Dons have had more than their share of ill luck this season after a dertermined bid last year to build up the playing resources.

Loose-forward Norman Cooper, the club captain and former Wakefield player, has been out all season with a recurrence of back trouble and seems unlikely to ever play again.

Full back Ian Markham, the former Hull KR player was injured in the opening game of the season in the Yorkshire Cup and he has not played since.

On the coaching side Doncaster have suffered similar traumatic experiences. They began the season with Billy Yates as caretaker coach following the departure midway through the previous campaign of Tommy Smales and Dick Lowe.

Early in the season former Oldham forward star Don Vines was appointed team manager but he was in the job only 96 days before he quit shortly before Christmas.

Yates is now back in charge and he must have been absolutely thrilled to bits when the first win was recorded at Huyton's expense.

We won at Doncaster 25 - 0 on the opening day of the Second Division season last September but a glance at the side we turned out then shows how it has changed during the course of the winter.

The Oldham team lined up like this: O'Brien, Munro, Larder, Ward, Fitzsimons, Francis, Arnold, Fiddler, O'Mahoney, Forster, Walczak, Hall, Hawkyard. Subs: A.N. Other, Taylor.

Jim Fiddler landed five goals and the tries were scored by Larder (2), Munro, Arnold and Fitzsimons.

Since then Doncaster have toiled throughout the season, and at the time of writing, had conceded 569 points in their 22 games a massive 160 points more than Huyton, the team with the second worst defensive record.

NEW & USED CYCLES * PART EXCHANGE WELCOME



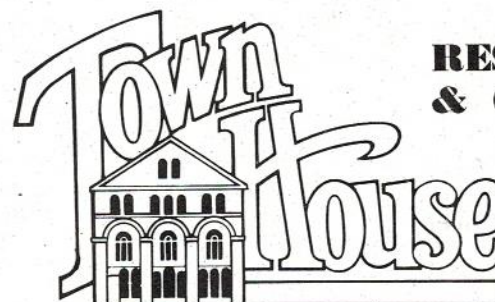
CYCLE SPARES AND REPAIR SERVICE

SUNTAL CYCLES

45-7 RIPPONDEN ROAD, OLDHAM

Tel: 061-624 7409

Open Daily 9 a.m. to 6 p.m. Sunday 10 a.m. to 1 p.m.
Late Night Friday till 9 p.m.



RESTAURANTS
& COCKTAIL BARS

35 Greaves Street, Oldham
Tel. 061-620 5418

Get Fit and Stay Fit at Watersheddings Fitness Club.

ROADSHOW FILLS A GAP

By Roger Halstead
(Oldham Evening Chronicle)

The first visit to Oldham of the well-known Rugby League Roadshow was a huge success and many local fans are hoping that a return visit will be made in future.

There were nearly five hours of tip-top Rugby League entertainment with a polished and professional approach, thanks mainly to the experience of Keith Macklin.

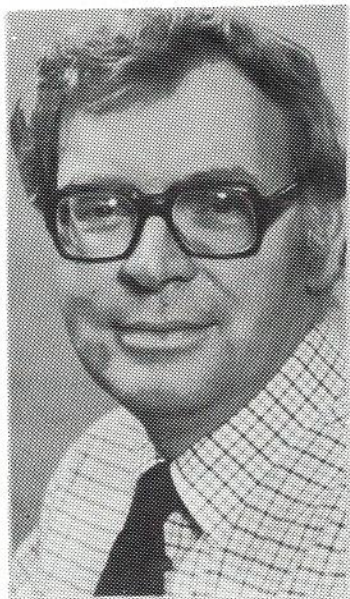
If the object of the exercise was to raise cash for the testimonial fund of Phil Larder it was a huge success with about £1,400 raised on the night. If, at the same time, there was a desire to entertain Rugby League fans in a League atmosphere the evening must also be voted a hit with nearly 600 fans watching the films and entering into the spirit of the other activities on stage.

This was the first Roadshow I had attended and I was pleasantly surprised. It was a great idea to introduce a purely local flavour in this case the appearance on stage of some of the Oldham stars of the fabulous fifties.

I heard only one criticism that the films were not seen at their best because the screen was hardly big enough for such a setting as that provided by the huge Queen Elizabeth Hall.

Still, it was a thoroughly enjoyable evening and one which compensates Rugby League fans to some degree for the shortage of back-up entertainment available to them compared with that of many other sports.

Sponsored by the Sunday Mirror, the Roadshow was warmly received by the Oldham public . . . and I for one hope it will make a return visit.



Your printing & copying made easy
*PRINTING *COPYING *PLAN PRINTING *POSTERS *DESIGN *TYPESETTING

KWIKPRINT  **INSTANT PRINTING CENTRE**

75 Union Street Oldham OL1 1HL Tel: 061-620 4824 *A friendly service*

Fitness Club (Men) Wed - Fri 6 - 9p.m. Sun 10 a.m. - 12 p.m.

PLANTEX HIRES

Kango's ★ Mixers
Compressors ★ Generators
Welders ★ Pumps

AT

34 - 36 HUDDERSFIELD RD.
OLDHAM

633-1523 652-0423

TRAVEL AS THE TEAM
DOES



by

**G. Barlow &
Sons Ltd.**

19 UNION STREET WEST -
OLDHAM Tel: 624 4301

Reacro Rubber Co. Ltd.

MONA MILL
FIELDS NEW ROAD
CHADDERTON

SUPPLIERS OF
UNVULCANISED
RUBBER COMPOUNDS

Tel: 061-652 1326

MILLER CROMPTON

Building Preservation
and Restoration
Free Survey of:

**WOODWORM
DRY ROT
RISING DAMP**

All Covered By

**30 YEAR WRITTEN
GUARANTEE**

APPROVED CONTRACTORS FOR
NESS

SILICONE DAMP PROOFING

Phone Anytime
061-652 0639
061-652 0630

24/26 BROOK STREET,
CHADDERTON, OLDHAM, LANCs

The most flexible of the Big Five Banks

WILLIAMS & GLYN'S BANK LTD ✱

Local Manager: R. Yates.
1, Church Terrace, Oldham

ALEX RULES, O.K.

ANSWER THE FOLLOWING QUESTIONS.

(1). "Red" Player is tackled near the touch line. As he is rising to play the ball he puts a foot on the touch line.

(2). "Red" Player kicks for touch, (from a penalty kick). It is going in touch on the full, and has in fact crossed the line, when "Whites" full back jumps from the field and knocks the ball back to a colleague.

(3). "Red" Player kicks for touch, (from a penalty kick). It is going in touch on the full, but has not crossed the line, when "Whites" full back jumps from touch and knocks the ball back to a colleague.

(4). "Whites" are taking a penalty kick to touch, 10 metres from their try line. As they kick, the Referee notices a "White" player standing offside right in front of his posts.



By Alex Givvons
(RL Grade I Referee)

ACCIDENTAL OFFSIDE:- Where the Referee is satisfied that interference with play by an offside player is accidental, he should order a scrum.
ACCIDENTAL OBSTRUCTION:- As in the above case, a Referee should order a scrum if he is satisfied that a player accidentally causes obstruction. Examples of this are mainly found in the "Scissors" move, and "Dummy Scissors".



**SILVER JIG AND TOOL
LABORATORY CO. LTD.**

Calibration and Reconditioning Engineers

The fastest Calibration & Correction service in
Great Britain

VERNIER TOOLS

MICROMETERS

SURFACE PLATES

THREAD GAUGES

JIGS & FIXTURES

PROJECTORS

PRESSURE GAUGES

AVOMETERS ETC.

PICK UP & DELIVERY SERVICE

Whitelands Industrial Estate
Clarence Street, Stalybridge
Telephone: 061-308 3811
308 3347

**The West Hill Eng.
Co. Ltd.**

HIGH-CLASS MOULDS FOR THE
PLASTICS & RUBBER TRADES

**SEVERN MILL
BRITON STREET
OLDHAM OL9 6NA**

Telephone: 061-624 6570 & 4597

SUPPORTERS CLUB NOTES

PLAYER OF THE YEAR

The 1979/80 Season Supporters Club 'Player of the Year', will be presented at today's match. The presentation will be made by Mr. Greg Pache, who has kindly sponsored this year's event, for which we are extremely grateful.

COACHES

Our next away games are at ROCHDALE on Friday 4th April and BRAMLEY on Sunday 19th April.

Coach times and prices are:-

ROCHDALE coach departs 2 p.m.

Adult member 75p Child member 50p.

Adult non-member 90p Child non-member 60p.

BRAMLEY coach departs 2 p.m.

Adult member £1.30 Child member 90p.

Adult non-member £1.50 Child non-member £1.10.

PLEASE BOOK AS EARLY AS POSSIBLE, AT TODAY'S MATCH IN THE CANTEEN OR SOCIAL CLUB.

BADGES:

Metal Oldham Supporters Club Lapel Badges are now on sale in all the canteens or at the Social Club price 50p. each. Blazer badges can also be obtained for £7.50.

BUKTA RED & WHITE RUGBY SHIRTS

Bukta Red and White Rugby Shirts available from the club.

£5.00 (Boys) to £8.50 (Dependant on size). Enquire at the canteens today, or any day at the Social Club.

SCARVES: - Oldham Rugby scarves available in Canteen and Social Club. Price £1.75

HIRE OUR SUPPORTERS SOCIAL CLUB

Have you anything to celebrate? Then why not hire a room in our club at very reasonable rates. Ring 061 - 624 0368 for details.

OLDHAM R.L.F.C.
Lottery

Still the best
£1,000 instant prize



More Agents urgently needed. Good Commission, Interesting Incentives.
Why not join us? Ring: Keith Masters, Clegg St, Oldham. 061-620 4870

Promoter: Ray Hatton, 13/15 Clegg St, Oldham.

Clear Span

Manufacturers of high grade aluminium glasshouses, greenhouses, pool enclosures, sports halls and rigid and flexible P.V.C. extrusions.



Clear Span Ltd

FREEPOST Greenfield, Oldham,
Lancs. OL3 7BR.
Tel. Sackfworth 3244-5-6.

AURTHUR GOSS & SON

"THE MAN'S SHOP"

- * Quality Mens Wear by best Makers
 - * Ready to Wear suits by 'DAKS' 'Maenson' and 'Sumrie'
 - * Raincoats by 'Burberry' 'Driway'
- RHODES BANK, OLDHAM**
Tel: 624 2086

Harvey
Ashworth
(manchester Ltd.)

(PRESIDENT OLDHAM RUGBY LEAGUE Football Club)
The Abattoir, River Park Road, Manchester 10
Tel: 061-223 2097

Book all your Travel requirements to anywhere in the World with

HOLLINWOOD
Travel Bureau

688 Manchester Road
Hollinwood, Oldham
Tel Failswort h 1859

ESTATE AGENTS & VALUERS

Thomas Birch & Co.

32 CLEGG STREET, OLDHAM.
Telephone: 624-4889 / 665-2048

Free Valuation on Request
Without Obligation

CLUB NEWS HALIFAX ARE COMING

HALIFAX, who look certain to join us in the First Division next season, will provide terrific opposition here at Watersheddings in our last home game of what has been a very satisfying season.

Though we hit something of a low in the early part of this month with poor displays in defeats by Barrow and Whitehaven we have assured ourselves of promotion now and that was the No.1 priority for the season.

We should have met Halifax last Sunday but the game was postponed because the Thrum Hall side were involved the previous day in the Challenge Cup semi-final against Hull KR.

That, in itself, gives an indication of the size of the task confronting us when Maurice Bamford's boys come here soon for a match which could easily provide us with our best home league gate of the season.

Our best attendance in the Second Division this season was the 3,716 which saw us beat Rochdale Hornets in the derby game on Boxing day.

Whether Halifax have won or lost in their brave bid to reach Wembley it seems a good bet that we will top 4,000 when they come here.

To start with the match has all the makings of being a good one without added considerations such as Halifax's keen desire to pick up every possible point in a late bid to dethrone leaders Featherstone at the top.

It will give our fans a last chance to get behind their team on home ground before our return to the First Division after three seasons in the Second.

And the match has plenty of importance for us in view of the way we got beat in January at Thrum Hall and the need to get some sort of revenge.

Add the fact that stand-off John Blair could be returning to Watersheddings, in the blue and white of Halifax, and there are enough ingredients to get the turnstiles clicking swiftly.

At the time of writing the match looked like being fixed for Wednesday evening, April 9 with a 7.30 p.m. kick-off.

With a backlog of matches still to fix in Halifax are fully booked on every Sunday until the end of the season and also have a mid-week game each week apart from the week after Easter.

Both clubs have provisionally agreed to stage the match at Watersheddings on April, 9.

If, by now, the date has been confirmed it means we play Rochdale at the Athletic Grounds on Friday and Halifax at home on the following Wednesday before finishing off at Bramley on Sunday, April 20.

For the first time in many years two of our players can finish high up among the try and goal scorers.

Geoff Munro has scored 19 tries to date and only one other player in the Second Division has scored more Chris Camilleri of Barrow.

For several weeks now the two wingers have been battling neck and neck and it will be interesting to see who finishes on top.

Eric Fitzsimons has landed 84 goals and he has two things to aim for in the remaining four games.

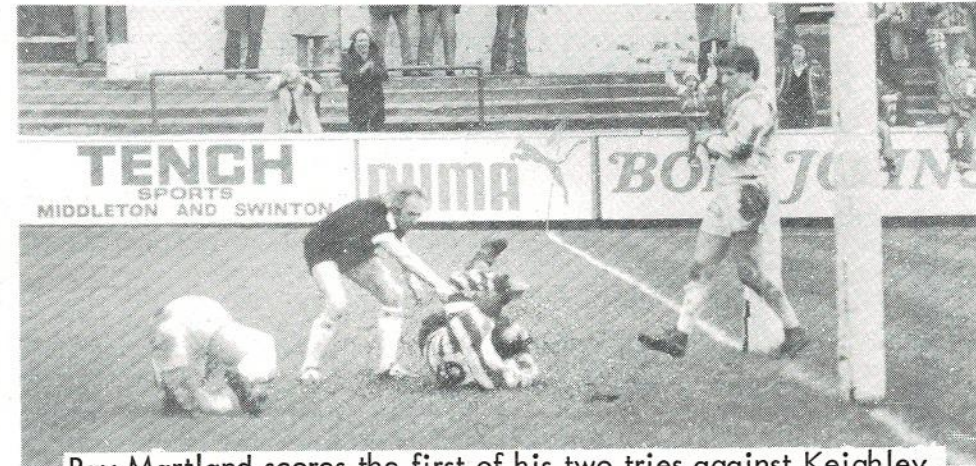
He will be anxious to kick the 16 goals necessary to give him his 100 for the season and he will also be keen to keep in the race to finish as runner-up to Steve Quinn of Featherstone as the leading goal kicker in the Second Division.

When these notes were compiled Eric had landed 84 goals to Ian Ball's 92 and Quinn's 144. No one in the Second Division can challenge the mighty Quinn, but in fact Eric has landed more place goals than Ball, whose total includes 11 drop goals.



Eric Fitzsimons.
84 Goals.

OLDHAM ACTION



Ray Martland scores the first of his two tries against Keighley.

Today's Match Ball presented by



TENCH (sports) LTD.,
S4 Arndale Centre, Middleton, Manchester.
Telephone: 061-643 7515



Geoff Munro
19 tries



SERVICE MOULDINGS PRECISION INJECTION MOULDERS

HARTSHEAD STREET, LEES, OLDHAM
Telephone 061-652 0441

YOU'LL FIND ALL THE
OLDHAM LOCAL SPORT

IN DEPTH
IN MONDAY'S

OLDHAM EVENING CHRONICLE

James Schofield
& Son
(Transport) Limited



- * All Classes of Haulage
- * Any Distance Undertaken
- * Expert Packing
- * Ample Storage Facilities Available

PRIMROSE BANK,
Oldham
Tel: 061 624 2968

TOM WEBB'S YESTERYEAR

We are attempting to give all the Oldham R.L.F.C. results since the Club started in 1876. In the following tables the letters M, G, and T stand for Minors, Goals and Tries.

Minors were dead balls (DB), touch in goals (TIG) and touch downs (TD). Dead balls occurred when the attacking side either kicked or carried the ball over the dead line, and a touch down was when the defending side made the ball dead.

In the early Rugby Union days a goal counted more than any number of tries and on one occasion Oldham 'A' scored eight tries but lost because the opposition dropped one goal.

Unfortunately the full match details are incomplete for the 1880's. Any details would be welcomed by the Programme Editor or by me, Tom Webb, 3 haggate Crescent, Royton, Oldham. OL2 5NF, as I am researching the history of the Club.

DATE	OPPONENTS	VENUE	OPPONENTS POINTS			OLDHAM POINTS			RESULT
			M	G	T	M	G	T	
1883 - 4									
September 29th.	HALIFAX	AWAY	3	2	2	3			Lost
October 6th.	DEWSBURY	HOME	3	2		3	1	1	Lost
October 13th.	SOUTHPORT OLYMPIC	AWAY		NIL		10	3	5	WON
October 20th.	THORNES	HOME	5		1	4		1	Draw
October 27th.	SALFORD	AWAY	1		2	1	1	1	WON
November 3rd.	MANCHESTER	HOME	5			2	1	1	WON
November 10th.	WALTON	HOME	1			7		1	WON
November 17th.	ROCHDALE HORNETS	HOME	4			6			Draw
November 24th.	ROYTON	AWAY		NIL		6	3	1	WON
December 1st.	SALE	HOME		NIL		6	3	1	WON
December 8th.	BROUGHTON	AWAY	Cancelled - Frost						
December 22nd.	BROUGHTON	HOME	5		1	3	2	1	WON
January 5th.	CHEETHAM HILL	HOME				7	4	5	WON

Schofields the complete Sports & Travel Goods Outfitter

All leading makes stocked

Suppliers to Oldham Rugby League Club

Schofields Sports & Travel Goods Centre

31-33-35 UNION STREET, OLDHAM 624 4314

206-8 STAMFORD STREET, ASHTON - U - LYNE 330 4180

Established 1823

COLTS CORNER—OLDHAM INFLUENCE G.B.

OLDHAM'S influence was enormous in Great Britain's 31 - 2 victory against France in the colts international at Watersheddings.

Loose-forward Terry Flanagan and scrum-half Ray Ashton were the best players on the field and sub Paddy Kirwan came on near the end to score a cheeky solo try Britain's seventh.

Either Flanagan or Ashton should have strolled away with it after each had delighted their home crowd with some superb attacking rugby.

Ashton, playing at scrum-half and looking an absolute natural in the position, cleverly switched the direction of attack to enable his stand-off Ian MacIntosh to put in centre Tony Myler for the first try after 11 minutes.

He proceeded to shake the French time after time with clever breaks, some intelligent distribution and accurate kicks to touch.

Flanagan led the British pack superbly and his ball handling and general football skills put him in a class apart from other forwards.

His reverse pass allowed Castleford's Neil James to put in winger Kevin Meadows after 23 minutes and ten minutes later Flanagan moved beautifully to create space and give Meadows an expertly timed scoring pass.

Scrum-half Gerard Hugon and second-row man Philip Marpy worked hard but the French strung together only one move of note in the first half.

Their tackling became very weak later and prop Mike O'Neill came into his own with several powerful driving runs.

Both he and James, later sent off after a clash with centre Bruno Guasch, went through half the French team to score and then Flanagan popped up again to give full back Colin Whitfield a walk-in with a wide pass.

The Kirwan try rubber stamped Oldham's influence. Within minutes of coming on, he spotted a gap from dummy half on the French 25 and raced away to beat the full back with ease.

Last weekend's game with Dewsbury was called off by the Yorkshire club because they could not raise a team.

It means we still have several matches in hand on our closest rivals for the Colts League title Leeds and as most of our remaining games are at home we must be confident of finishing top of the tree.

We are virtually assured, too, of finishing in the Premiership play-off and an exciting finish to the season is in prospect.

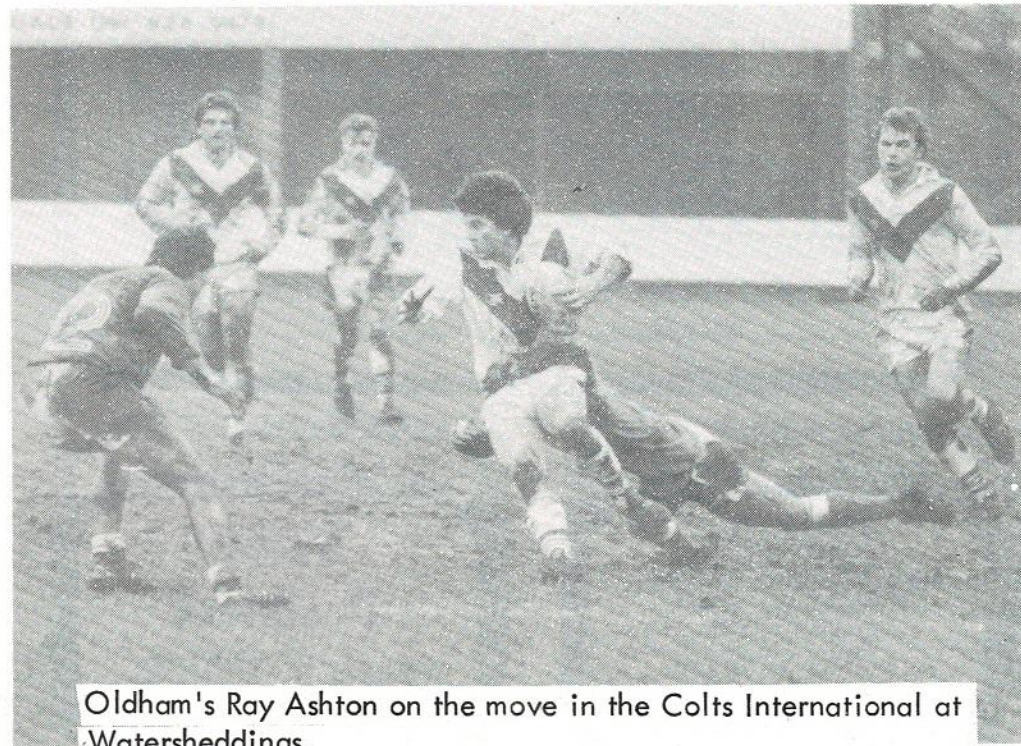
All details will be announced in the Oldham Evening Chronicle as they become known.

Fitness Club (Ladies) Monday 6 - 9 p.m.

COLTS FIXTURES

1979		F. A.	
Aug. 18	Leigh	A	16-11
25	Bradford	H	38- 2
Sept. 1	Leeds	A	15-13
8	Bramley	H	29- 4
15	Castleford	A	28-11
29	Leeds	H	12-19
Oct. 6	Widnes	A	21-17
13	Hull	A	17-16
20	St. Helens	H	P.
27	Wakefield	A	37-16
Nov. 3	Hunslet	H	19-13
10	Bradford	A	8-6
17	Salford	H	P.
24	Hunslet	A	7-12
Dec. 1	Widnes	H	P.
8	St. Helens	A	28- 5
29	Leigh	H	P.

1980		F. A.	
Jan. 5	Salford	A	P.
12	Bramley	A	21-13
19	Hull	H	P.
26	Dewsbury	A	10-0 A
Feb. 2	Rochdale	A	P.
9	Cup-First Round		3-6
16	Widnes.	H	24-12
23	Cup-2nd. Round		25- 5
March 1	Castleford	H	P
8	Hull K.R.	A	18- 17
22	Dewsbury	H	P
29	Wakefield	H	
April 5	Rochdale	H	



Oldham's Ray Ashton on the move in the Colts International at Watersheddings.

JOE GALLAGHER

PAINTER and DECORATOR

26 Alva Road Telephone
Watersheddings 061-652 0208
Oldham

Office telephone: 061-681 7448

GET PROFESSIONAL
INSTRUCTION WITH

DAVID GIBLIN D.O.E., A.D.I.
SCHOOL OF MOTORING

Dual control cars - Pupils called for
Pay as you learn - Courses at
reduced rates

Tel: 061-652 8408 & 061-620 1835

QUEGHAN

pacemakers in civil engineering



Queghan House, off Shaw Road, Oldham, Lancs.
Telephone 061-620 2115/6/7

GEORGE & SHEILA
Welcome you to
THE BULLS HEAD

Luncheons, Bar Snacks,
Morning drive breakfasts

OGDEN, NEWHEY,
ROCHDALE.

Shaw 847992

Seton Products

Support OLDHAM RLFC
By donating our Elastic Support Bandages
etc.

THOMPSON TAKES FRENCH IN HIS STRIDE!

Brian Batty
Daily Mail



When the season seems to be sagging a little in interest and excitement then a trip to France for an international can certainly restore the balance.

Will things ever change? The scene in France, I mean, where the crowds, the players and the officials live in a world of controversy.

It is a pity when you can get a packed stadium in Narbonne for a France - England title decider that sport has to go out of the window.

Who would have swapped places with English Test referee Billy Thompson? Not a soul, I am sure, for he was about to face up to yet another incident-packed 80 minutes.

The signs were there within sixteen minutes when one of his touch judges signalled that England winger Steve Evans had stepped into touch before scoring his try.

There was never any need for Evans to go near the line without a defender around and England coach Eric Ashton, sat a few yards away, said afterwards: "Evans was a yard from the touchline".

Ashton was right to add later: "Why didn't the touch judge do anything when the French second row man lashed through the scrum to kick Keith Rayne in the face".

"It happened right under his nose. But this time he never moved his flag. He must have seen it". Fortunately no one could fault the handsome move that led to Evans scoring the game's only try despite the French team's insistence that Marc Bourret's pass to winger Sebastien Rodgriez was not forward.

It looked well forward to me but Thompson's decision left the crowd in an ugly mood and the French players refused to even discuss the game.

Thompson took the bombardment of beer cans and other missiles in his stride, was smuggled out of the ground and police gently replaced a gate while those fans still left an hour later applauded England's team onto their coach.

I asked Thompson would he be prepared to referee in France in the future - he has had more than his share of hair-raising experiences on five trips now - but his answer was typical.

"I am on the international panel for referees so I will carry on doing the job".

D. ALAN WILDE

Carpet Fitting Specialist

All types of flooring fitted
expertly

Uplifting * Removing
Re-Fitting * Maintenance

17 Whinberry Way, Moorside, Oldham
Tel: 061-633 0484

JAMES DRANSFIELD

Specialists in the Manufacturing of
all types of Fluted Rollers for Textile
and other industries.

**MELROSE ENGINEERS,
COTSWOLD AVENUE BUTLER
GREEN, CHADDERTON,
OLDHAM OL9 8PJ**

Tel: 061-624 4142 / 061-624 2835

ALL TYPES OF MACHINE CUT GEARS AND
BEVELS IN METRIC & ENGLISH



Oldham Motor Co. Ltd.

2-12 MANCHESTER RD · WERNETH · OLDHAM
OL9 7QL · TELEPHONE: 061 652 2411

First Team Fixtures 1979/80

Date	Opponent	Venue	K.O.	F. A.
Aug. 19	County Cup Swinton	Away	22-15	
Aug. 26	Warrington 2nd Round	Home	6-34	
Sept. 2	Doncaster	Away	25-0	
Sept. 9	Huyton	Home	3.00pm 7-31	
Sept. 16	John Player Leeds	Home	9-20	
Sept. 19	B.B.C. St. Helens	Away	17-17	
Sept. 23	Batley	Home	13-13	
Sept. 30	John Player 2nd. Round	Home	3.00pm 22-9	
Oct. 7	Featherstone	Home	3.00pm 23-22	
Oct. 14	Whitehaven	Away	13-13	
Oct. 21	Bramley	Home	3.00pm 22-9	
Oct. 28	Halifax	Home	3.00pm P.	
Nov. 4	Huddersfield	Away	12-3	
Nov. 11	Barrow	Home	3.00pm 6-5	
Nov. 18	Swinton	Away	12-15	
Nov. 25	Dewsbury	Home	3.00pm 25-6	
Dec. 2	Huyton	Away	31-4	
Dec. 9	Batley	Home	3.00pm 32-9	
Dec. 16	Dewsbury	Away	17-14	
Dec. 26	Rochdale	Home	3.00pm 13-0	
Dec. 30	Featherstone	Away	8-8	
Jan. 6	Swinton	Home	3.00pm 29-4	
Jan. 13	Keighley	Away	18-17	
Jan. 20				
Jan. 27	Huddersfield	Home	3.00pm P.	
Feb. 3	Dewsbury Cup 1st Round		24-2	
Feb. 17	Huddersfield		15-12	
Feb. 24	Challenge Cup 2nd Round		5-10	
Mar. 2	Barrow	Away	14-23	
Mar. 9	Whitehaven	Home	3.00pm 9-17	
Mar. 16	Keighley	Home	3.00pm 18-10	
Mar. 23	Halifax	Away		
Mar. 30	Doncaster	Home	3.00pm	
Apr. 6				
Apr. 13				
Apr. 20				
Apr. 27	Bramley	Away		

'A' Team Fixtures 1979/80

Date	Opponent	Venue	K.O.	F. A.
Sept. 1	Workington	Home	3.00pm	15-12
Sept. 7	Leigh	Away	7.30pm	5-13
Sept. 13	Blackpool	Home	7.30pm	25-23
Sept. 21	Warrington	Away	7.30pm	18-10
Oct. 6	Workington	Away	2.30pm	P.
Oct. 18	Wigan	Home	7.30pm	18-17
Oct. 26	Wigan	Away	7.30pm	25-15
Nov. 1	Leigh	Home	7.30pm	16-3
Nov. 10	Barrow	Away	2.30pm	16-22
Nov. 15	Swinton	Home	7.30pm	
Nov. 24	Rochdale	Away	3.00pm	P.
Nov. 29	St. Helens	Home	7.30pm	P.
Dec. 7	Widnes	Away	7.30pm	16-16
Dec. 15	Whitehaven	Away	3.00pm	12-8
Dec. 20	Rochdale	Home	7.30pm	P.
Jan. 4	St. Helens	Away	7.30pm	12-15
Jan. 10	Swinton	Away	7.30pm	6-28
Jan. 17	Widnes	Home	7.30pm	P. 27.9.79
Jan. 19	Whitehaven	Home	3.00pm	21-9
Jan. 26	Rochdale	Home	3.00pm	5-5
Feb. 2	St. Helens			7-7
Feb. 9				
Feb. 14	Warrington	Home	7.30pm	12-0
Feb. 23				9-6
Mar. 1	Barrow	Home	2.30pm	28-16
Mar. 12	Salford	Away	7.30pm	14-12
Mar. 15	Blackpool	Away	3.00pm	10-13
Mar. 20	Salford	Home	7.30pm	

SOLUNA TRAVEL SERVICES LTD.

THIS YEAR GIVE US A TRY

TRY USA AND CANADA

We specialise in all low cost transatlantic flights and also all the latest in package holidays to the United States.

TRY ANY CONTINENTAL PACKAGE HOLIDAY

We are agents for all the leading tour operators and have a large and comprehensive selection of different holiday brochures in which you will find the holiday of your choice.

TRY CRUISING

We are agents for all major cruise lines and we will assist you in choosing from many different cruises the one to suite you and your pocket.

THIS YEAR TRY SOLUNA TRAVEL SERVICES AT:

290 Manchester St. 061 633 0606
429 Hollins Rd. 061 652 4128
22 Rochdale Rd. Royton 061 633 4818

We offer what we consider the best in personal service - and what's more our services are free!

RADIO CARS (Oldham) Ltd.

061

633 2277

24 HOUR SERVICE

159-161 UNION STREET
OLDHAM



RADIO CARS CARES

BAR FURNISHING

A FURNISHING CONTRACT SERVICE OF ESTIMATES ADVICE SUPPLYING AND FIXING ALL FORMS OF FURNISHING INCLUDING MOST RANGES OF CARPETS CURTAINS FURNITURE AND ACCESSORIES

Geometric Furniture Ltd.

Office and Showroom
SHEPHERD STREET,
ROYTON,
OLDHAM OL2 5PB
Tel: 061-633 1119 /
061-620 2346

THE 1980 OLDHAM STANDARD CUP FINAL

By Alan Burke

Public Relations Officer,
Oldham Amateur Rugby League.

On Good Friday morning (kick-off 11 a.m.), the most prestigious and best-known local amateur Rugby League competition again comes to its conclusion when Saddleworth Rangers and Saint Anne's meet at Watersheddings in the Final of the Oldham Standard Challenge Cup.

The Standard Cup was first played for in the 1903-04 season and throughout its 76 year history has become one of the most sought after prizes in the amateur Rugby League world, with the Final having become one of the major sporting events of the year in the Oldham area. The attendance for the Final, which is always played on Good Friday morning, is annually the highest for any amateur game in the country, while the receipts for last season's decider of £1,071 was a World Record for Amateur Rugby League.

The pre-match organisation of the Final by the Oldham Amateur League is looked upon with awe by other local-leagues in the North of England, who can perhaps display superior skills on the field-of-play, but who can not even hope of matching the Oldham League behind the scenes. Prior to the event, the League organise a "Timed-Try" competition, from which this season each local club and the Oldham Referees' Society will benefit by £50. The programmes for the Final are on sale at least a week before the decider, and are again the best for any amateur game in Britain. This season's programme includes photographs of both teams, the match officials, and the trophy itself, while the 28 page edition is also filled with a full list of previous Cup Final results, pen pictures of all the players and officials, and a complete history of the event.

The trophy itself is solid silver and is valued at about £1,500. The intense organisation of the Final also attracts many sponsors, for both the League and the competing teams. As an example, this season's match and the programmes are being sponsored by the local F.M.D. Agricultural Machinery firm, while the League have also attracted sponsors for the ball and the Man-of-the-Match award, and both finalists have received sponsorship for their Cup Final kit. And such is the attraction of the Standard Cup that the Final is already sponsored for the next two years.

This season's finalists, Saddleworth and St. Anne's are both Premier Division sides in the Pennine League, and have previously met in the Standard Cup Final on four occasions, with each side winning twice. Saddleworth have qualified with victories over Langworthy and Mayfield, while the Saints defeated Waterhead, Higginshaw and Fitton Hill. Both sides are well matched and the Oldham League are again hoping for an attendance in excess of 5,000. If you have never been to a Standard Cup Final, why not go along this year!

On Easter Monday morning (11 a.m.), the Saddleworth "A" team are also in Cup Final action when they face Todmorden at the Athletic Grounds, Rochdale, in the Final of the Rochdale Charity Cup. The Charity Cup has been revived this season after several years' absence, and the Rochdale League are also hoping for their greatest crowd for a local Final for several seasons.



FOR ALL THE LOCAL AMATEUR RUGBY LEAGUE NEWS:
B.B.C. RADIO MANCHESTER:
206 Medium Wave; 95.1 vhf.
BARLA REPORTS Every Friday 6.30 p.m.
Rugby League Special Every Sunday 6.15 p.m.

Try and Convert to

WARRINGTON STEEL SERVICES LTD.

Steel Stockholders and Shearers

SHEET AND BLANK SPECIALISTS IN:-

COLD REDUCED
GALVANISED
HOT ROLLED
ZINTEC

CONTACT

GREG PACHE, ALAN COLQUHOUN
RICHARD HASSELL

WARRINGTON (0925) 52127/50448
or TELEX 629544

OFFICES

Lower Wash Lane
Latchford
Warrington

WORKS

Howley Lane
Warrington