

PROGRAMME SPONSOR



SELFLOCK LTD

SELFLOCK LTD. Gloster House, Avondale Industrial Estate,
Cwmbran, Gwent NP44 1TS.
Tel: Cwmbran (06333) 66022/3 Telex 497790

SELFLOCK will **TACKLE** every enquiry, **HANDLE** them well and **SCORE** every time with the keenest quotations for manhole covers of all types, construction drainage castings and your special access cover requirements.

Teams

Watersheddings - Sunday 22nd March, 1981.

OLDHAM

HALIFAX

Cherry/White Hoops,
Blue Shorts.

1. Martin MURPHY
2. Geoff MUNRO
3. Clive HUNTER
4. Dennis O'NEILL
5. Brian CAFFREY
6. Ray ASHTON
7. Paddy KIRWAN
8. Gareth OWEN
9. Ray MARTLAND
10. Billy HARRIS
11. Bob MORDELL
12. Alan PLATT
13. Terry FLANAGAN
- 14.
15. Steve HERBERT

Blue/White Hoops,
White Shorts.

1. Jimmy BIRTS
2. Mick O'BYRNE
3. Graham GARROD
4. Dave CHOLMONDELY
5. Keith WAITS
6. Mick BLACKER
7. Terry LANGTON
8. Dave CALLON
9. Allen MASKILL
10. George STANDIDGE
11. Mick SCOTT
12. Dave WALTON
13. Dave BUSFIELD
14. 15.

Referee: Mr. R. Campbell Widnes)

Touch Judges: R. Parker (Dalton-in-Furness) D. Drinkwater (Warrington)

NEXT MATCH AT WATERSHEDDINGS

Sunday, 5th April, 1981 v WAKEFIELD TRINITY

Designed & Printed by KWIKPRINT - OLDHAM



OLDHAM

v

HALIFAX

Watersheddings - Sunday 22nd March, 1981.

RUGBY LEAGUE DIVISION 1

25p



Slalom Lager
RUGBY LEAGUE
CHAMPIONSHIP

GEORGE HILL

(OLDHAM) LTD

SPUR



LAUAN SOLID TIMBER
HAND CARVED DOORS



PEWTER

BRONZE

NEW SPUR ALUMINIUM

Gardor

WHITE PLAS

TEAK TYPE PLAS

HILLPLAS ★

You can do almost
anything with
HILLPLAS

SCOTTFIELD SAW MILLS
ASHTON ROAD, OLDHAM
Phone: 061-652 7421

OLDHAM RUGBY LEAGUE FOOTBALL CLUB OFFICIALS The Pavilion, Watersheddings, Oldham Tel: 061-652 5244 & 061-624 4865

President: H.V. Ashworth
Chairman: R. Hatton
Vice-Chairman: J. Bowden
Treasurer: K. Broadbent

Committee: E. Buckley, F. Diskin, J. Hall, D. Hulme, R. Ogden, K. Potter

Secretary: J. Chadwick

Coaching Staff: Graham Starkey (Manager), Terry Gorman (Asst. Manager),
Brian Gartland

Professional Playing Staff

Adrian Alexander - Ray Ashton - Bob Blackwood - Brian Caffrey - Barry Conner - Leslie Cook -
Michael Coombes - Mike Cowley - Pasquale D'Adamo - Stephen Dobb - Eric Fitzsimmons -
Terry Flanagan - Alan Forster - Andrew Goodway - Ken Gwilliam - Billy Harris -
Colin Hawkyard - Steve Herbert - Clive Hunter - Clive Jones - Paddy Kirwan - Steve Littler -
Paul Lowndes - John Mantle - Ray Martland - Bob Mordell - Geoff Munro - Martin Murphy -
Gerrard Nolan - Tony Ogden - Ian Ogden - Roger O'Mahoney - Mike O'Rourke -
Garth Owen - Mick Parrish - Johnny Patterson - Alan Platt - Gordon Pollard - Ian Radcliffe -
Warren Ryans - Derek Seabrook - Clive Sullivan - Dave Taylor - Garry Walczak - John Walls -
Dave Walker - Joe Warburton - Phil Ward - Mike Worrall

Hon. Solicitors: A.J. Adler

Doctor: Dr. D. Walton **Hon. Consultant Orthopaedic Surgeon:** Mr. H. Thompson

Physiotherapist: Mr. A. Bonelle **Asst. Physiotherapist:** Mr. J. Watkins

Financial & Admin. Manager: Mr. David Oakes Tel: 061-620 4870

Commercial Manager: Keith Masters **Social Club Manager:** Kevin Wilkinson

Groundsman: J. Walker **Asst. Groundsman:** W. Caine

Official Time Keeper: J. Roscoe

CLUB RECORDS

Record Victory,	67-6 against Liverpool City April 59
Record defeat	11-67 by Hull K.R. Sept. 78
Record attendance	28,000 v Huddersfield Feb 24th 1912
Record receipts	£9,100 v Wakefield 24th Feb. 1980.
Record transfer fee paid	£18,500 to Hunslet for Mick Parrish Sept. 1980
Record transfer fee received	£11,002: 10s from Workington for Ike Southward Jan 62
Record try scorer	Reg Farrar 49 tries 1921/22 season
Record goal scorer	Bernard Ganley 224 goals 1957/58 season
Record point scorer	Bernard Ganley 28 pts v Liverpool City April 59
First game	October 21 1876 v Stalybridge
Highest number of Points Scored	Bernard Ganley 2881
Most Appearances	Joe Ferguson 685
Most Tries	Pre 1900 Jack Hirst 233 Since 1900 Alan Davies 182

CLUB HONOURS

Rugby League Championship Play-off winners: 1909-10, 1910-11 and 1956-57
Runners-up: 1906-07, 1907-08, 1908-09, 1921-22 and 1954-55
First Division Champions: 1904-05
Second Division Champions: 1963-64
Rugby League Challenge Cup winners: 1898-99, 1924-25, 1926-27
Runners-up: 1906-07, 1911-12, 1923-24 and 1925-26
Lancashire Cup winners: 1907-08, 1910-11, 1913-14, 1919-20, 1924-25, 1933-24,
1956-57, 1957-58 and 1958-59
Runners-up: 1908-09, 1911-12, 1918-19, 1921-22, 1954-55, 1966-67 and 1968-69
Lancashire Championship winners: 1907-08, 1909-10, 1921-22, 1956-57 and 1957-58
Runners-up: 1908-09, 1910-11, 1911-12, 1919-20, 1923-24 and 1954-55
Lancashire Shield winners: 1975-76 1979-80
Colts Premiership Trophy: 1979-80

RIVALS IN RELEGATION BATTLE!

HALIFAX come to Watersheddings today as one of our chief rivals in the battle to stay in the First Division.

This is a crucial match for both sides and a "four pointer" in the true sense of the expression as both clubs are currently in the bottom four and each needs to push the other down a bit to enhance its own prospects of retaining First Division status.

Halifax dealt us a bitter blow to our Second Division title aspirations last season when they beat us 21-10 at Thrum Hall in January on a very hard pitch. Less than three months later, in the last home game of the season, we well and truly got our revenge when winning 24-4 at Watersheddings after a magnificent first-half display in which we totted up 19 points without reply. It was quite a night because Geoff Munro completed his hat-trick of hat-tricks in that match to equal the Second Division try-scoring record and pave the way for his record-breaking 26th try in the final match at Bramley.

However, that defeat at Thrum Hall cost us the Second Division runners-up place because Halifax and Oldham each finished with 41 points but the Thrum Hall men just edged us out of second place with the better scoring record.

There was no slipping up at Thrum Hall this season, however. We went there early last month and won a real thriller 13-10 with tries by Munro (2), and Terry Flanagan and two goals by Eric Fitzsimons.

We produced some lovely football early on but spent most of the second-half on defence and we produced a terrific display of tackling to keep Mick Blacker and his boys at bay.

Since then, Halifax have produced some workmanlike displays, notably one to beat Featherstone at home, and today's match should be well worth seeing. It can be reasonably stated that most of the Halifax threat comes from that vastly-experienced midfield trio of loose-forward Ken Loxton, scrum-half Terry Langton and stand-off Mick Blacker.

That is not to say the Yorkshiremen have nothing else to offer.

In full back Jummy Birts they have a young full back who has had under-24 honours and is also an accomplished goalkicker. He did not play in the match at Thrum Hall as he was just returning from injury.

Mick Scott, who has scored a lot of tries this season, and Dave Busfield are strong and penetrative second-row runners while Dave Callan is proving a more-than-useful prop who links up well in set-piece moves with Loxton and Scott.

Loxton, who made his name as a clever scrum-half with Huddersfield, is one of the cleaverest loose-forwards in the game given the chance and both Blacker at stand-off and Langton at scrum-half are capable of either brilliant individual play or playing key roles in pre-planned team ploys.

Indeed, it was Langton who caused us trouble at Thrum Hall when he scored a cheeky solo try with a little kick from dummy half just before half-time and then skipped through again shortly after half-time to crown a splendid individual display.

NEW & USED CYCLES * PART EXCHANGE WELCOME



CYCLE SPARES AND REPAIR SERVICE

SUNTAL CYCLES

45-7 RIPPONDEN ROAD, OLDHAM

Tel: 061-624 7409

Open Daily 9 a.m. to 6 p.m. Sunday 10 a.m. to 1 p.m.
Late Night Friday till 9 p.m.

TOWN TAVERNS LIMITED

FUN PUB

FIRTH STREET, OLDHAM.

(side of The Town House Restaurant)

IT'S FREE IT'S FUN IT'S FABULOUS
LIVE ENTERTAINMENT NIGHTLY

Open Monday to Saturday, 7 pm to 11 pm

CELLAR WINE BAR

(Town House Restaurant, 35 Greaves Street, Oldham)

WINE AT REASONABLE PRICES

TETLEY ALE AT PUB PRICES

EXCELLENT SNACKS AVAILABLE

You've tried the rest, now try the best

TOWN HOUSE RESTAURANT, 35 GREAVES STREET, OLDHAM

Telephone: 061-620 5418

For the finest food at the finest prices in Oldham

Weddings, Funerals, 21st and 18th Parties, etc. catered for.

PUZZLING SELECTIONS

By Roger Halstead

(Oldham Evening Chronicle)

It is easy to see why the Rugby League coaches, meeting at Leeds, voted to urge the game's administrators to alter the system of selection for our international teams.

There does appear to be a terrific lack of consistency about the choice of the England, Wales and Great Britain teams and this is usually due to the system of having teams picked by a panel of selectors.

The coaches are calling for the teams to be picked by manager Colin Hutton and coach Johnnie Whiteley - and I'm with them all the way.

I back them not because I don't agree with some of the current choices - I would probably not always agree no matter who was picking the team but because it is logical that the responsibility is left in the hands of one man, or two, rather than eight or nine.

Many years ago, at club level, most teams were picked by the club's board of directors or by the committee in the case of a members' club.

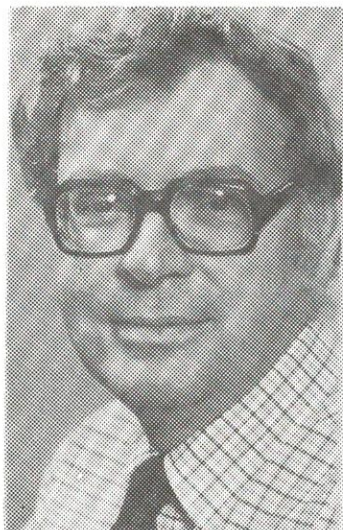
This has now changed and most teams these days are now picked by the manager, coach or player/coach not because they can do the job any better but because it is right and proper that the boss whose job very often depends on results at least has the say in picking the men he believes can get those results. There are other benefits, too. At least the players know exactly where they stand when they know who picks the side and the boss, in turn, can always explain why he has left out a particular player.

Moreover, you are less likely to get inconsistency like we have had this season. Take the case of Hull loose-forward Steve Norton, who was not picked for the first two Tests against New Zealand but was brought back for the third which we won.

He was again overlooked for the England team which lost to France at Headingley a month ago but he was recalled again for the England side that played Wales at Hull KR last Wednesday.

Take the case of Len Casey, who played prop in the third Test against the Kiwis, second-row for England against France but was back at prop on Wednesday. Take the case of Oldham's Terry Flanagan, who played for the under-24 side against the Kiwis at Fulham, won a place in the full international squad for the third Test, was "shadow" loose forward behind Harry Pinner for the England - France game but now finds that Norton has leap frogged both him and Pinner for the Welsh match.

Norton himself expressed surprise at his selection and claimed he was recalled only because the game was taking place in his "adopted" city of Hull. Whether you accept that depends upon your point of view, but the fact is that ten players from Rovers or Hull F.C. were among the two teams and neither Whiteley nor Hutton are exactly strangers in that fair city!



The West Hill Eng. Co. Ltd.

HIGH-CLASS MOULDS FOR THE
PLASTICS & RUBBER TRADES

SEVERN MILL
BRITON STREET
OLDHAM OL9 6NA

Telephone: 061-624 6570 & 4597

TRAVEL AS THE TEAM
DOES



by

**G. Barlow &
Sons Ltd.**

19 UNION STREET WEST -
OLDHAM Tel: 624 4301

Reacro Rubber Co. Ltd.

MONA MILL
FIELDS NEW ROAD
CHADDERTON

SUPPLIERS OF
UNVULCANISED
RUBBER COMPOUNDS

Tel: 061-652 1326

SERVICE MOULDINGS

**PRECISION
INJECTION
MOULDERS**

HARTSHEAD STREET,
LEES, OLDHAM
Telephone 061-652 0441

**“Our
business is
pounds, pence
and people.”**

**WILLIAMS & GLYN'S
BANK LTD**



Local Branch Manager: R. Yates

MUDDY END TO OUR COLTS CUP HOPES

OUR Colts Cup ambitions came to an end at the muddy Boulevard last Saturday when Hull beat us 7-0 in the semi-final of this season's knock-out competition.

The Boulevard is notorious this season for its terrible condition and the heavy and consistent rain for the period prior to the match made it ankle deep in mud. The conditions were alien to our top-of-the-ground footballers and were far more suited to the heavier home side, our chief rivals also in the battle for the league title and the premiership.

Nevertheless, any side has to take its chances if it is to progress in cup competitions and whereas Hull landed two penalties in the first half, Mick Worrall was off the mark with two similar chances for Oldham and the home side turned round with a 4-0 interval lead.

As conditions deteriorated in the second half chances for both sides were limited and the only addition to the score was a try for Hull's Great Britain colts forward Lee Crooks, who forced his way in from close range.

The aggressive Hull side had two players sent off in the second half but the advantage Oldham would normally have gained was largely cancelled out because of the appalling conditions.

The hooker was sent off first, following an incident in the scrum which resulted in Les Chadwick having to leave the field with a nasty jaw injury.

Then Crooks followed him for the early bath after an incident involving Oldham prop Paul Lowndes our third injury victim as No. 10 forward David Harvey had been forced to leave the field with double vision after taking a knock to the head.

All the Oldham players gave 100 per-cent, with Worrall, Warburton and Seabrook perhaps worthy of special mention.

Our cup aspirations over, we must now concentrate once more on honours in league and premiership. All the signs are that Oldham and Hull will finish in the top two places though it is difficult to say at this stage who will win the title and who will be second so, barring slip-ups, it could be that we will meet the Boulevarders again in the premiership final . . . on a dry ground?

**Today's Match Ball presented by
K.F. FISHER TEXTILES**



Union Street, Royton. Tel: 061-624 0641



ALEX RULES O.K.

By Alex Givvons
(RL Grade 1 Referee)

OFFSIDE PLAY - Extracts from Section 14 of the Rugby League Manual of Laws of the Game.

1. A player is Offside except when he is in his own in goal if the ball is kicked, touched or held by one of his own side behind him.
2. An offside player shall not take any part in the game or attempt in any way to influence the course of the game or not encroach within five metres of an opponent who is waiting for the ball and shall immediately retire 5 metres from any opponent who first secures possession of the ball.
3. An Offside player is placed on side if:-
 - a) An opponent moves 5 metres or more with the ball.
 - b) An opponent touches the ball without retaining it.
 - c) One of his own side in possession of the ball runs in from of him.
 - d) One of his own side kicks the ball forward and takes up a position in front of him in the field of play.
 - e) If he retires behind the point where the ball was last touched.

An Offside player must not make any move which actively interferes with an opponent waiting to catch the ball.
An Offside player therefore has to watch his step. His only chance of being placed onside (if he does not retire) is for the opponent to lose possession and, even then, the Referee has to be satisfied that the Offside player's proximity has nothing to do with the opponents fumble i.e. within 5 metres proximity.
When the Referee is satisfied that interference with play by an Offside player is accidental he should order a scrum.
A player who catches the ball near an Offside opponent must not go out of his way to make interference in play by the Offside player unavoidable. He should proceed with normal play and rely on the Referee to penalise the Offside player if the latter interferes with play. If the catcher deliberately and unnecessarily runs into the offside player then play should proceed, providing the Offside player is not within 5 metres of the catcher.
Players who are out of play at a Play-the-ball or a scrum are not put "on side" in the manner described above, "Para 3".

Seton Products

Support OLDHAM RLFC
By donating our Elastic Support Bandages
etc.



Make your Goal the
DOG & PARTRIDGE
Constantine Street,
Oldham.
and try our
Wilson's Traditional Ale's
Your Hosts
Kevin & Christine

YOU'LL FIND ALL THE
OLDHAM LOCAL SPORT

IN DEPTH
IN MONDAY'S

OLDHAM EVENING CHRONICLE

GEORGE & SHEILA
Welcome you to
THE BULLS HEAD
Luncheons, Bar Snacks,
Morning drive breakfasts
**OGDEN, NEWHEY,
ROCHDALE.**
Shaw 847992

ESTATE AGENTS & VALUERS

Thomas Birch & Co.

32 CLEGG STREET, OLDHAM.
Telephone: 624-4889 / 665-2048

**Free Valuation on Request
Without Obligation**

**James Schofield
& Son**
(Transport) Limited



- * All Classes of Haulage
- * Any Distance Undertaken
- * Expert Packing
- * Ample Storage Facilities
Available

PRIMROSE BANK,
Oldham
Tel: 061 624 2968

JOE GALLAGHER
PAINTER and DECORATOR

26 Alva Road
Watersheddings
Oldham

Telephone
061-652 0208

CLUB NEWS

END OF CHALLENGE CUP RUN

OUR Challenge Cup run came to an end in the third-round tie against St. Helens at Watersheddings last Sunday when the Saints won through narrowly to earn a semi-final tie against Hull KR at Leeds.

The Oldham team gave them the fright of their lives and in a classic encounter, full of good football and good tackling which kept a sizeable crowd entertained for 80 minutes, Saints won with only one point to spare -- 6-5.

The point that mattered was a drop goal from Peter Glynn after half an hour. It was as close as that in a game that could have gone either way until the final hooter.

The Oldham team put everything into their big effort and this perhaps had some effect on them only 48 hours later when we had to take on Widnes here at Watersheddings.

If ever a game proved that a side up against it rarely has its fair share of good luck this was it.

The second Widnes try was a lucky one, following a kick ahead and a defensive scramble, and the try only 15 minutes from the end that finally ended our challenge followed a peculiar incident -- again after a kick ahead.



Graham Liptrot scores the vital try for Saints which cancelled out our early lead.

SIX GAMES LEFT

It leaves us now with six games left in which to pick up sufficient points to try and escape the drop to the Second Division.

Being realistic, it will be a very stern task but it is not yet beyond us -- or beyond Halifax, our opponents today.

If one assumes that Barrow and Featherstone are safe, it looks almost an impossible task but one cannot assume anything in Rugby League.

Featherstone have had a bad run of seven or eight consecutive defeats and unless they start picking up points quickly they, too, could be in real trouble.

Today's game between Oldham and Halifax assumes vital importance for both teams -- for obvious reasons -- and it is important that we follow up our victory at Thrum Hall last month with a win on home soil.



Referee Holdsworth points to the try that brought the house down. Gareth Owen, the scorer, is buried beneath the defenders.

MR. R.L. THOMAS

It is with the deepest regret that we record the passing of one of our former club committee men, Mr. R.L. Thomas or "Dickie" as he was more affectionately known. He was 80.

He served on the committee for about 14 years and was in office through those glorious years of the 1950s.

The son of a great Oldham full back, who came north from his native Wales about the turn of the century, Dickie was the second of three generations of men called Richard Llewellyn Thomas.

His own son, of the same name, is better known as Dickie Thomas, the former top-class Rugby League referee.



It's Local Time
in Greenall Whitley Land

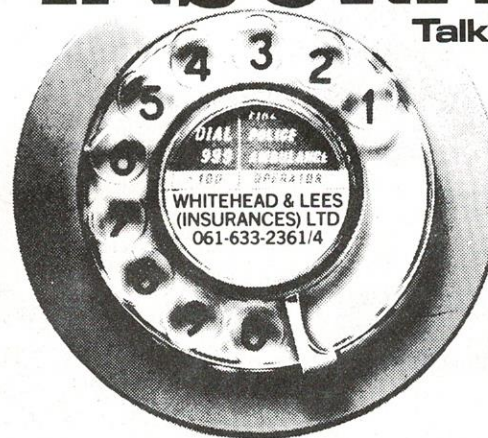


SLALOM LAGER CHAMPIONSHIP LEAGUE TABLE

	P	W	D	L	F	A	pts
Warrington	19	15	0	4	297	174	30
Wakefield	22	14	2	6	412	322	30
Castleford	22	13	2	7	413	330	28
Hull K.R.	20	13	1	6	322	241	27
Bradford N.	23	13	1	9	295	263	27
Widnes	23	12	1	10	319	279	25
Hull	20	12	0	8	294	266	24
Leeds	22	12	0	10	277	312	24
St. Helens	23	10	1	12	312	271	21
Featherstone R.	24	10	0	14	386	339	20
Barrow	22	10	0	12	290	385	20
Leigh	21	9	0	12	255	276	18
Workington	24	7	3	14	263	356	17
Halifax	23	8	0	15	270	330	16
OLDHAM	23	7	1	15	264	414	15
Salford	25	7	0	18	394	505	14

INSURANCE?

Talk person to person



As Oldham's largest insurance brokers, we offer a full and, most important a personal service for all types of insurance. It's a service we're proud to extend to mortgages, both domestic and industrial. Pop in anytime and you're guaranteed the friendliest of attention. Established over 50 years.

**Whitehead & Lees
(Insurances) Ltd.**

B I B A

The British Insurance Brokers' Association

34, Union Street, Oldham (tel 061-633 2361)
14, Rossall Road, Cleveleys (tel 0253-855818)



The Oldham club recently donated a full strip to the town's under-17 side - further proof of the goodwill that exists between Watersheddings and the local league. John Burke, secretary of the Oldham League, receives the strip from club chairman Ray Hatton.



SUPPORTERS CLUB NOTES

Anyone wishing to become a member of the Supporters Club may do so at any Canteen or in the Social Club. **Price:** £1.00 (including a Diary)

Forthcoming events in our Social Club, run by the Supporters Club.

An Easter Bonnet Parade - on Saturday 18th April, 1981. Admission Adults £1.00, Children 60p. 8 p.m. - 12 Midnight (including supper)

The Player of The Year Dance on Friday 24th April, 1981. Cabaret & Disco By Vic Preston. Admission £1.00 8 p.m. - 12 Midnight.

Annual Pram Race on Monday 25th May, 1981. To leave the Social Club at 7 p.m. Followed by a Disco & Presentation from 9 p.m - 12 midnight Admission 50p.

Lancashire Federation of Rugby League Supporters Club Annual Player of the Year Awards and Rugby League Queen Competition. In our Social Club on Friday May 29th, 1981 8 p.m. - 1 a.m. Cabaret & Dancing. Tickets £1.00 each. From any Supporters Club Committee Member. **(A number of Star Player's in attendance)**

Wembley Draw on Tuesday 21st April, 1981 - Draw at 9 p.m. Potato Pie Supper **Free to all Supporters Club Members.** Small charge to non-members. Buy your Draw Tickets in our Canteens today or in the Social Club. **Prizes:** Cup Winners £25.00 Runners up £10.00 Losing semi-finalists £2.50 All other teams £1.00 **Tickets** 50p per book.

The Trumanns Man of Steel to be held at the **Golden Garter** on Wednesday 13th May, 1981. Tickets may be ordered from any Canteens or the Social Club.

Metal Supporters Club Badges are on sale at **60p**, **Blazer Badges £7.50** each. **Oldham R.L.F.C. Sweaters** sizes are 34, 36, 38, 40 in red, these are priced at **£10** each. **Red & White Rugby Shirts** sizes 30,32 **£6.50** each, 34,36 **£8.75** 40,42 **£10.35**. Red & White **Scarves** at **£1.75**. **Bobhats £1.25** each. **Colts Car Stickers 45p** each. All items can be bought from any canteen or in the Social Club at any time.

A coach will be running to Leigh on Sunday 29th March, leaving at 2p.m.

Price: Adult members £1.20, non-members £1.40 Junior-members 80p, non-members £1.00. Please book at any Canteen or in the Social Club. Tel: 061-624 0368.

The cup winner.



Slalom Lager

Brewed by Matthew Brown



2 UP & DOWN BY END OF SEASON?

Brian Batty
Daily Mail

Rugby League's coaches have come out strongly in support of the growing bid to reduce the number of clubs promoted and relegated.

They want the present system of four up and down cut by half that number at the end of the season.

They have been accused though in some areas of putting their own interests and safety before the overall consideration of the game.

But I don't agree that that is the case and I would once again be in favour of modifying the system.

I came out fully in support of St. Helens move last season for a change to three up and down and was surprised when it went through.

But if it came to a straight choice between the present system and going over to two up and down then I would plump for the latter.

There is no doubt in my mind that there is more to be gained by reducing the panic and despair which ebbs through the game in the lower half of the First Division.

What makes it worse is that so many clubs now cannot afford playing staffs of any real depth and a bad injury run can virtually condemn them to relegation. The only major factor is that clubs coming up from the Second Division are not enjoying the necessary breathing space to establish themselves in the more competitive section.

They are not prepared for life at the top in some cases and the worst thing that can happen is a burst of panic buying.

So we are getting the yo-yo situation with more or less the same clubs involved in the same desperate battles for survival almost every season.

It does not make sense though some people are trying to claim it brings much needed drama excitement to both divisions.

It also brings the fears into our football that is never going to lift standards which is vital for the future if we are ever to become an international force again.

So let's apply the brake now and benefit with the clubs given the chance to establish themselves without spending most of the season on a knife edge situation.



PRINTING, COPYING, TYPING, Letraset & GRAPHIC PRODUCTS

KWIKPRINT



**INSTANT PRINTING
& GRAPHICS CENTRE**

Municipal Buildings, 75, Union Street, Oldham. OL1 1HL Telephone: 061-620 4824

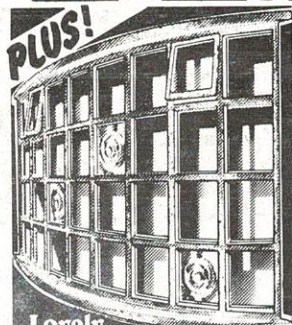
**Add a touch
of class
with Flat
and Bay
Windows
in Natural
Fine**



QUALITY ASSURED

**VISIT OUR NEW
FACTORY/SHOWROOM
OPEN WEEKDAYS
10am-6pm
SUNDAY 10am-2pm**

DRIVELDEN
OLDHAM OR DHAM ROAD MANCHESTER
MONSALL RD. ☐ VISITORS
MONSALL HOSPITAL L. ☐ BRICKERY
WINDOWCARE
MONSALL
M10



PLUS!
**Lovely
range of Georgian
Flat and Bay window
styles for you to
choose from.**

**FOR INFORMATION
TODAY-RING OUR
ACTION LINE
061-205 8741**

- Windowcare's exclusive timber treatment means that your lovely windows are virtually maintenance free. The wood keeps its natural good looks for years and years.
- Luxury double glazing fitted as standard, single glazing optional.
- All windows tailor-made in our new fully equipped joinery department, ensuring best possible quality and value for money.
- Increase the value of your home and save £££...s on fuel bills and re-painting. A double financial benefit.
- Comprehensive five year guarantee.

Post to Windowcare Ltd., Freepost, Monsall Mill, Manchester, M10 8NR. Tel: 061-205 9416/8741.

For East Yorkshire and Teeside Tel: Keyingham (09644) 2387.

I would like further details on ☐ Hardwood Bay Windows

☐ Flat Windows ☐ Georgian Windows
(tick boxes required) ☐ Low Cost Repayments

NAME _____

ADDRESS _____

TEL. NO. _____

WINDOWCARE



NO
STAMP
NEEDED

FIRST TEAM FIXTURES 1980/81

Date	Opponent	F. A.
H Aug. 3 Sun.	Rochdale (Chairty Match)	32 - 15
A Aug. 10 Sun.	St. Helens (Friendly)	12 - 30
A Aug. 17 Sun.	Swinton (County Cup)	11 - 5
A Aug. 24 Sun.	County Cup 2nd Round	15 - 13
A Aug. 31 Sun.	Castleford	14 - 14
A Sept. 7 Sun.	Bradford	10 - 21
A Sept. 14 Sun.	Featherstone	17 - 32
A Sept. 21 Sun.	Hull	11 - 16
A Sept. 28 Sun.	Leeds	14 - 16
A Oct. 5 Sun.	Leigh	15 - 12
A Oct. 12 Sun.	Widnes	18 - 28
A Oct. 19 Sun.	Workington	18 - 10
A Oct. 26 Sun.	Workington	18 - 10
A Nov. 2 Sun.	Featherstone	10 - 31
A Nov. 9 Sun.	Bradford	9 - 2
A Nov. 16 Sun.	Salford	22 - 7
A Nov. 23 Sun.	John Player York	9 - 11
A Nov. 30 Sun.	Wakefield	15 - 24
A Dec. 7 Sun.	Workington	4 - 25
A Dec. 14 Sun.	Widnes	9 - 27
A Dec. 21 Sun.	Hull K.R.	10 - 11
A Dec. 26 Fri.	St. Helens	2 - 1
A Boxing Day	Hull	2 - 30
A Dec. 28 Sun.	Warrington	11 - 27
A Jan. 1 Thurs.	Warrington	11 - 27
A New Years Day	Barrow	19 - 12
A Jan. 4 Sun.	Leeds	20 - 11
A Jan. 11 Sun.	Castleford	8 - 15
A Jan. 18 Sun.	Castleford	13 - 10
A Jan. 25 Sun.	Barrow	11 - 2
A Feb. 1 Sun.	Halifax	
A Feb. 8 Sun.	Challenge Cup Blackpool	
A Feb. 15 Sun.	Hull K.R.	
A Feb. 22 Sun.	Challenge Cup 2nd Round	
A Mar. 1 Sun.	Warrington	
A Mar. 8 Sun.	Halifax	
A Mar. 15 Sun.	Leigh	
A Mar. 22 Sun.	Wakefield	
A Mar. 29 Sun.	St. Helens	
A Apr. 5 Sun.	St. Helens	
A Apr. 12	St. Helens	
A Apr. 17 Fri.	St. Helens	
A Good Friday	Salford	
A Apr. 20 Mon.	Salford	
A Easter Monday.	Salford	

'A' TEAM FIXTURES 1980/81

Date	Opponent	F. A.
H Aug. 7 Thurs.	Higginshaw (Friendly)	26 - 2
H Aug. 14 Thurs.	Saddleworth Rangers	P
A Sept. 3 Wed.	Salford	6 - 13
A Sept. 9 Fri.	Warrington L.C.C.S.	2 - 8
H Sept. 18 Thurs.	Swinton	27 - 23
H Sept. 25 Thurs.	St. Helens	8 - 15
A Oct. 2 Thurs.	Leigh	10 - 23
A Oct. 9 Thurs.	Rochdale Hornets	16 - 13
H Oct. 16 Thurs.	Widnes	12 - 11
A Oct. 18 Sat.	Whitehaven	18 - 10
A Oct. 25 Sat.	Workington	20 - 14
H Oct. 30 Thurs.	Wigan	15 - 29
A Nov. 8 Sat.	Blackpool	7 - 8
A Nov. 14 Fri.	Salford	P
H Nov. 20 Thurs.	Swinton	16 - 11
A Nov. 27 Thurs.	Wigan	14 - 13
H Dec. 4 Thurs.	Widnes	18 - 7
A Dec. 11 Thurs.	Barrow	10 - 8
H Jan. 3 Sat.	St. Helens	5 - 16
A Jan. 9 Fri.	Whitehaven	7 - 0
H Jan. 17 Sat.	Barrow	21 - 9
A Jan. 31 Sat.	Warrington	8 - 14
H Feb. 5 Thurs.	Blackpool	11 - 0
A Feb. 19 Thurs.	Warrington	
H Mar. 6 Fri.	Warrington	
A Mar. 14 Sat.	Warrington	
H Mar. 19 Thurs.	Rochdale	
A Mar. 26 Thurs.	Leigh	

Harvey Ashworth

(manchester Ltd.)

(PRESIDENT OLDHAM RUGBY LEAGUE Football Club)
The Abattoir, River Park Road, Manchester 10
Tel: 061-223 2097

THE OPEN CHAMPIONSHIPS

By Alan Burke

Public Relations Officer,
Oldham Amateur Rugby League.

As teams throughout the Pennine League area enter the final weeks of the 1980-81 season, several of the promotion and relegation issues are still undecided in all eight divisions of the League. A total of 75 teams compete in the Pennine League, which covers Oldham and Yorkshire and with almost half of the teams still in with a chance of changing divisions for next season.

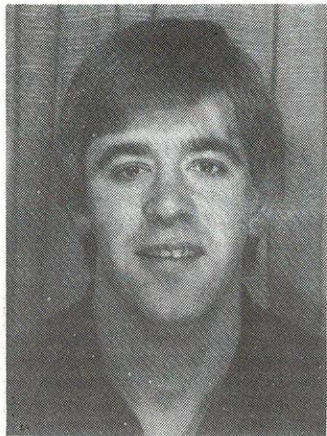
Rochdale giants Mayfield currently top the Premier Division and seem capable of winning their third consecutive Pennine Championship, while Waterhead hold a mid-table position and have several matches in hand on all their opponents, but Saint Anne's are at the foot of the division and need a few quick victories to avoid relegation. Saddleworth Rangers are challenging strongly for a swift return into the Premier Division, following their drop to Division 1 this season, with Fitton Hill seeming set to achieve their ambition for this season of staying in the First Division after being promoted last term.

In Division 2, Ferranti are already doomed to relegation and will be replaced next season by another local side, Shaw, who last week clinched the Third Division Championship title, and have achieved promotion for the third successive year. Indeed, the Shaw club were only formed three years ago and have been promoted every season so far. Next season Shaw will join Higginshaw and Saddleworth (A) in Division 2, with both these local sides seeming set to finish in the centre of the table.

Another local side who could gain Championship honours are the Waterhead (A) team in Division Four, where Salem Hornets and the Saint Anne's reserves are also chasing for promotion. The Ferranti second-string, like their senior squad, are to be relegated, and next season will be joining Hollinwood, Salem Hornets (A), and Tudor Lodge, in Division Six. Our only local side in the Seventh Division, Fitton Hill (A), will also be pleased with their efforts in their first season and will also finish in a mid-table spot.

Having secured the Division 3 Championship, Shaw are now aiming to continue their giant-killing acts in the Pennine Growler Cup. In the Second Round of the competition Shaw held Premier Division side Saint Joseph's of Huddersfield to a scoreless draw at High Crompton Park, and then travelled to Yorkshire to gain a 9-7 away win in the replay. Yesterday Shaw were due to entertain Division 1 side Illingworth of Halifax in Round 3, and with home tie against Victoria Rangers of Bradford in the quarter-finals awaiting the winners. Waterhead have already reached the quarter-finals and now face an away game against Underbank in Holmfirth.

Ferranti have won the first Oldham Exhausts Under-17s League Championship, organised by the Greater Manchester Youth League, while the Under-15s title has gone to Waterhead. Both championships are sponsored by the local Oldham Exhausts company.



FOR ALL THE LOCAL AMATEUR RUGBY LEAGUE NEWS:
B.B.C Radio Manchester (206 medium wave; 95.1 v.h.f.)

BARLA REPORTS Every Friday 6.30 pm
RUGBY LEAGUE SPECIAL Every Sunday 3.30 pm - 6 pm (Amateur news - 5.35 pm)

Try and Convert to

WARRINGTON STEEL SERVICES LTD.

Steel Stockholders and Shearers

SHEET AND BLANK SPECIALISTS IN:-

COLD REDUCED
GALVANISED
HOT ROLLED
ZINTEC

CONTACT

GREG PACHE, ALAN COLQUHOUN
ROGER LEE, TREVOR JAMES

NEWTON-LE-WILLOWS (09252) 21122
or TELEX 629544

Offices & Works

Unit 6, Deacon Trading Estate
Earlestown
Newton-le-Willows,
Merseyside WA12 9XN