

PROGRAMME SPONSOR



SELFLOCK LTD

SELFLOCK LTD. Gloster House, Avondale Industrial Estate,
Cwmbran, Gwent NP44 1TS.

Tel: Cwmbran (06333) 66022/3 Telex 497790

SELFLOCK will **TACKLE** every enquiry, **HANDLE** them well and **SCORE** every time with the keenest quotations for manhole covers of all types, construction drainage castings and your special access cover requirements.

Teams

OLDHAM

Cherry/White Hoops,
Blue Shorts.

1. Brain CAFFREY
2. Ashley McEWEN
3. Clive HUNTER
4. Mick PARRISH
5. Dennis O'NEIL
6. Ray ASHTON
7. Paddy KIRWAN
8. Alex ALEXANDER
9. Ray MARTLAND
10. Gareth OWEN
11. Steve HERBERT
12. Mick WORRALL
13. Terry FLANAGAN

- 14.
- 15.

Referee: K. Allatt (Southport)

Touch Judges: J.W. Fairhurst (Wigan), J. Clarke (Blackpool)

SALFORD

Scarlet/Amber/Black Hoops,
Black Shorts.

1. Steve RULE
2. Frank WILSON
3. David STEPHENSON
4. Colin WHITFIELD
5. Maurice RICHARDS
6. Bill FRANCIS
7. Steve NASH
8. Mike COULMAN
9. Paul O'NEIL
10. Mal YATES
11. Harold HENNEY
12. Chris McGREAL
13. Stuart WILLIAMS

- 14.
- 15.

NEXT MATCH AT WATERSHEDDINGS

Designed & Printed by KWIKPRINT - OLDHAM



OLDHAM

v

SALFORD

Watersheddings - Monday 20th April, 1981.
RUGBY LEAGUE DIVISION 1

25p

Slalom Lager

RUGBY LEAGUE CHAMPIONSHIP

GEORGE HILL

(OLDHAM) LTD

SPUR



LAWN SOLID TIMBER
HAND CARVED DOORS



PEWTER

BRONZE

NEW SPUR ALUMINIUM

Garador

WHITE PLAS

TEAK TYPE PLAS

HILLPLAS ★

You can do almost
anything with
HILLPLAS

SCOTTFIELD SAW MILLS
ASHTON ROAD, OLDHAM
Phone: 061-652 7421

OLDHAM RUGBY LEAGUE FOOTBALL CLUB OFFICIALS

The Pavilion, Watersheddings, Oldham
Tel: 061-652 5244 & 061-624 4865

President: H.V. Ashworth

Chairman: R. Hatton

Vice-Chairman: J. Bowden

Treasurer: K. Broadbent

Committee: E. Buckley, F. Diskin, J. Hall, D. Hulme, R. Ogden, K. Potter

Secretary: J. Chadwick

Coaching Staff: Graham Starkey (Manager), Terry Gorman (Asst. Manager),
Brian Gartland

Professional Playing Staff

Adrian Alexander - Ray Ashton - Bob Blackwood - Brian Caffrey - Barry Conner - Leslie Cook -
Michael Coornbes - Mike Cowley - Pasquale D'Adamo - Stephen Dobb - Eric Fitzsimmons -
Terry Flanagan - Alan Forster - Andrew Goodway - Ken Gwilliam - Billy Harris -
Colin Hawkyard - Steve Herbert - Clive Hunter - Clive Jones - Paddy Kirwan - Steve Littler -
Paul Lowndes - John Mantle - Ray Martland - Bob Mordell - Geoff Munro - Martin Murphy -
Gerrard Nolan - Tony Ogden - Ian Ogden - Roger O'Mahoney - Mike O'Rourke -
Gareth Owen - Mick Parrish - Johnny Patterson - Alan Platt - Gordon Pollard - Ian Radcliffe -
Warren Ryans - Derek Seabrook - Clive Sullivan - Dave Taylor - Garry Walczak - John Walls -
Dave Walker - Joe Warburton - Phil Ward - Mike Worrall

Hon. Solicitors: A.J. Adler

Doctor: Dr. D. Walton **Hon. Consultant Orthopaedic Surgeon:** Mr. H. Thompson

Physiotherapist: Mr. A. Bonelle **Asst. Physiotherapist:** Mr. J. Watkins

Financial & Admin. Manager: Mr. David Oakes Tel: 061-620 4870

Commercial Manager: Keith Masters **Social Club Manager:** Kevin Wilkinson

Groundsman: J. Walker **Asst. Groundsman:** W. Caine

Official Time Keeper: J. Roscoe

CLUB RECORDS

Record Victory	67-6 against Liverpool City April 59
Record defeat	11-67 by Hull K.R. Sept. 78
Record attendance	28,000 v Huddersfield Feb 24th 1912
Record receipts	£9,100 v Wakefield 24th Feb. 1980.
Record transfer fee paid	£18,500 to Hunslet for Mick Parrish Sept. 1980
Record transfer fee received	£11,002: 10s from Workington for Ike Southward Jan 62
Record try scorer	Reg Farrar 49 tries 1921/22 season
Record goal scorer	Bernard Ganley 224 goals 1957/58 season
Record point scorer	Bernard Ganley 28 pts v Liverpool City April 59
First game	October 21 1876 v Stalybridge
Highest number of Points Scored	Bernard Ganley 2881
Most Appearances	Joe Ferguson 685
Most Tries	Pre 1900 Jack Hirst 233 Since 1900 Alan Davies 182

CLUB HONOURS

Rugby League Championship Play-off winners:	1909-10, 1910-11 and 1956-57
Runners-up:	1906-07, 1907-08, 1908-09, 1921-22 and 1954-55
First Division Champions:	1904-05
Second Division Champions:	1963-64
Rugby League Challenge Cup winners:	1898-99, 1924-25, 1926-27
Runners-up:	1906-07, 1911-12, 1923-24 and 1925-26
Lancashire Cup winners:	1907-08, 1910-11, 1913-14, 1919-20, 1924-25, 1933-24, 1956-57, 1957-58 and 1958-59
Runners-up:	1908-09, 1911-12, 1918-19, 1921-22, 1954-55, 1966-67 and 1968-69
Lancashire Championship winners:	1907-08, 1909-10, 1921-22, 1956-57 and 1957-58
Runners-up:	1908-09, 1910-11, 1911-12, 1919-20, 1923-24 and 1954-55
Lancashire Shield winners:	1975-76 1979-80
Colts Premiership Trophy:	1979-80

WELCOME THE RED DEVILS

SALFORD are today's visitors to Watersheddings in this final match of our 1980-81 First Division campaign and the Red Devils, like ourselves, seem certain to be in the Second Division next season.

It will seem strange to see Salford in the lower strata for the first time since two divisions were reintroduced but with four up and four down each season there invariably seems to be at least one "big name" on the way down.

Last year it was Wigan's turn to sample life in the Second Division and the year before that it was Featherstone's.

Today's game, therefore, could assume some significance with next year in mind because, on form at least, one would expect both clubs to be among the pace-setters in the Second Division.

We have already beaten Salford twice this season by 15-13 at Watersheddings in the second round of the Forshaw's Lancashire Cup last August and by 22-7 at the Willows in a First Division fixture on November 19. The cup-tie was a real thriller and will best be remembered for those exciting last few minutes when Bob Mordell sold a beautiful dummy in injury time to put Ray Ashton over by the posts.

We needed the goal to win us the match and Terry Flanagan stepped up to put over the vital goal as Mick Worrall, the regular kicker at that time, had gone off injured.

In the league match at Salford, Mick Parrish kicked five goals and we won comfortably with four tries, one of them coming from Gareth Owen the first time he touched the ball in his first senior outing of the season.

Several weeks after that Bill Francis left Watersheddings and was snapped up by Salford and one of the tit-bits of today's game will be the reappearance at Watersheddings of our former player-coach.

It seems hard to believe that Salford are down at the bottom considering the talent they have at the Willows talent in the shape of many good players, among them Steve Rule, Colin Whitfield, David Stephenson, Keith Fielding, Steve Nash, Maurice Richards, Mike Coulman, Harold Henney and many others.

Whitfield and Stephenson, the former Fylde RU centre-threequarter, are among the best young players in the game today and there are several other young players at the Willows who will capture attention in the next year or two with hooker Paul O'Neill on of the brightest.

In mid-season Alex Murphy departed the Willows scene and ultimately took over the reigns at Leigh and the side is now coached by Murphy's former assistant, Kevin Ashcroft.

NEW & USED CYCLES * PART EXCHANGE WELCOME



CYCLE SPARES AND REPAIR SERVICE

SUNTAL CYCLES

45-7 RIPPONDEN ROAD, OLDHAM

Tel: 061-624 7409

Open Daily 9 a.m. to 6 p.m. Sunday 10 a.m. to 1 p.m.
Late Night Friday till 9 p.m.

TOWN TAVERNS LIMITED

FUN PUB

FIRTH STREET, OLDHAM.

(side of The Town House Restaurant)

IT'S FREE IT'S FUN IT'S FABULOUS
LIVE ENTERTAINMENT NIGHTLY

Open Monday to Saturday, 7 pm to 11 pm

CELLAR WINE BAR

(Town House Restaurant, 35 Greaves Street, Oldham)

WINE AT REASONABLE PRICES

TETLEY ALE AT PUB PRICES

EXCELLENT SNACKS AVAILABLE

You've tried the rest, now try the best

TOWN HOUSE RESTAURANT, 35 GREAVES STREET, OLDHAM
Telephone: 061-620 5418

For the finest food at the finest prices in Oldham
Weddings, Funerals, 21st and 18th Parties, etc. catered for.

TERRY FLANAGAN CAPTAIN COURAGEOUS!

By Roger Halstead
(Oldham Evening Chronicle)

THAT razor sharp edge that made Terry Flanagan a cut above the rest when he made his Great Britain under-24 debut last November may have become a little less incisive in the past few weeks.

But that does not alter the fact that Rugby League's youngest club captain has shown great courage, fortitude in character in leading a largely inexperienced side in a relentless battle against the odds since Christmas.

At 20, and only two seasons out of youth rugby the task Terry took on when offered the leadership of a side badly lacking in First Division experience was like trying to climb Everest on crutches.

Flanagan is a cool, sensible and intelligent young man who, like his pal and contemporary Paddy Kirwan, has been used to the pressures of captaincy at all levels of his development from schoolboy to international football.

He captained Saddleworth Under-18s and Great Britain youth as an amateur and, since turning pro, has already had the vice-captaincy of the Great Britain colts side and the British under-24 team.

CONTROL

Test team boss Johnnie Whiteley appointed him vice-captain and pack leader of the under-24s after watching him assume control, almost automatically, of the British forwards in training.

There is only one person who really knows whether the job is proving a burden and that is the player himself.

"Not really," says Terry, "though it may have done just a little bit while we have been so hard pressed. Earlier in the season I could just play my own game but now I am having to do some thinking for the team."

"But I honestly don't think it has affected me much at all. It's always nice to be able to look up to someone on the field but I don't think the actual captaincy has troubled me."

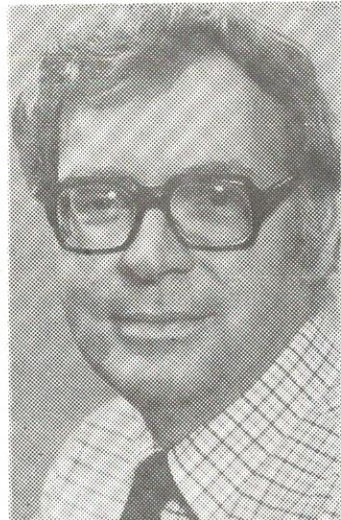
Certainly, there are probably far more relevant reasons for that little bit of snap going out of Flanagan's normally sophisticated play.

To start with he has not missed one Oldham match in a very trying season. Apart from captaincy, he carries a lot of responsibility by virtue of the key role he plays and all this while studying hard at Manchester University for vital qualifications to further his career.

Last season, in the Second Division, he was largely unknown whereas his meteoric elevation to the international scene this year, coupled with the departure of Bill Francis and Brian Lockwood, has made him a marked man.

"Just as Terry adjusted to the massive step from youth rugby to the senior game so he is now going through the process of adjusting to being a player opponents always watch closely," says manager Graham Starkey.

"It is a transitional period all good players have to go through and the cream come out of it successfully and emerge as even better players. We know that Terry has it in him to do just that." Taking everything into account the lad has done a magnificent job - both on the field and off it.



The West Hill Eng. Co. Ltd.

HIGH-CLASS MOULDS FOR THE
PLASTICS & RUBBER TRADES

SEVERN MILL
BRITON STREET
OLDHAM OL9 6NA

Telephone: 061-624 6570 & 4597

TRAVEL AS THE TEAM
DOES



by

**G. Barlow &
Sons Ltd.**

19 UNION STREET WEST -
OLDHAM Tel: 624 4301

Reacro Rubber Co. Ltd.

MONA MILL
FIELDS NEW ROAD
CHADDERTON

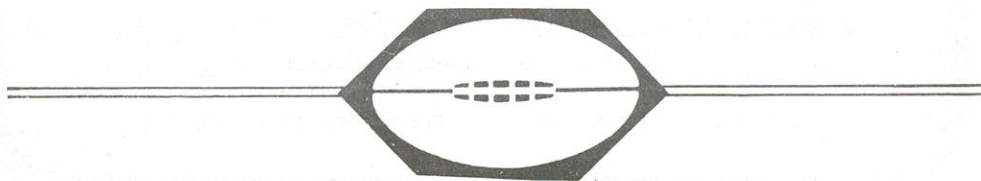
SUPPLIERS OF
UNVULCANISED
RUBBER COMPOUNDS

Tel: 061-652 1326

SERVICE MOULDINGS

**PRECISION
INJECTION
MOULDERS**

HARTSHEAD STREET,
LEES, OLDHAM
Telephone 061-652 0441



**“Our
business is
pounds, pence
and people.”**

**WILLIAMS & GLYN'S
BANK LTD**



Local Branch Manager: R. Yates

OFFSIDE AT THE PLAY-THE-BALL

By Alex Givvons
(RL Grade 1 Referee)

In a previous programme I outlined the Referees function in helping to ensure a speedy play-the-ball. i.e., the onus is not only on the tackler to release his man and stand off, but the tackled player must play the ball without delay. If the player, after being tackled, accidentally loses possession the Referee must penalise him. Often both the tackled player and the tackler are guilty of feigning injury or that an arm is trapped, many times going to endless lengths to make the delay seem accidental. The Referee must be quickly on the spot to ensure continuous flow of play.

When the Referee feels he has to be over the play-the-ball more often during certain phases of the game he often has to forego making the five metre mark, i.e. when play becomes over rough, and of course problems which arise from slow play-the-balls. These incidents can cause niggling, and often lead to dismissals.

A Referee must not penalise an offside player simply for being offside. It is often impracticable to do this if the play-the-ball is executed quickly. Players more often than not will be unable to retire in time. Players therefore are out-of-play and must not interfere until they have moved to the five metre mark this being on-side. The Referee will often weigh up the advantage to the attacking side before penalising any offenders. He can also penalise players for passively interfering and influencing the direction of play by standing in an offside position well away from play.

Teams who are constantly penalised have only themselves to blame because they are obviously trying to close up the game.

It is also interesting to observe, as a neutral, that spectators are remarkably quiet when the opposition have the ball - "Geremonside Ref"!!!

INSURANCE?

Talk person to person



As Oldham's largest insurance brokers, we offer a full and, most important a personal service for all types of insurance. It's a service we're proud to extend to mortgages, both domestic and industrial. Pop in anytime and you're guaranteed the friendliest of attention. Established over 50 years.

**Whitehead & Lees
(Insurances) Ltd.**

B I B A

The British Insurance Brokers' Association

34, Union Street, Oldham (tel 061-633 2361)
14, Rossall Road, Cleeveleys (tel 0253-855818)

OLDHAM COLTS STILL CAHSING LEAUE TITLE

OUR colts are still hot on the heels of leaders Hull in the chase for the Colts League title.

Oldham's latest win was a 35-7 triumph over neighbours Rochdale Hornets at Strinesdale and if the youngsters can continue to fulfil their fixtures -- and pick up league points -- the title could again be on its way to Watersheddings. In the Rochdale match we went 0-7 down in the early stages but staged a remarkable recovery to lead 15-7 at half-time and then score another 20 points after the interval.

Chris Willis, who captained England schoolboys two years ago, was in tremendous form for Oldham. He kicked four goals and scored a try and literally had a hand in each of our other six tries.

All that despite a badly-gashed knee which was stiched on the touch line at half-time by our club doctor.

Other tries were scored by Joe Warburton, Anthony Gallagher, Stephen Dobb (2), Paul Kirwan and Mick Worrall, who also landed three goals.

It was a splendid team performance in which Willis played the star role and he was closely followed by Worrall, Les Chadwick and Derek Seabrook, who played loose-forward.

Latest news on our Great Britain colts centre, Mick O'Rourke, badly injured at Hunslet a few weeks ago, is that he is progressing well and hopes to play again in our run-in to the title and the premiership play-off.

Mick suffered a severe facial injury and was kept in a Leeds hospital overnight. Later, he was examined in Manchester and had an operation for a depressed fracture of the cheek bone.



adidas
The mark of a winner

adidas
OFFICIAL SUPPLIERS OF PLAYING
KIT & FOOTWEAR TO
OLDHAM RUGBY LEAGUE
FOOTBALL CLUB.

Make your Goal the
DOG & PARTRIDGE
Constantine Street,
Oldham.
and try our
Wilson's Traditional Ale's
Your Hosts
Kevin & Christine

YOU'LL FIND ALL THE
OLDHAM LOCAL SPORT

IN DEPTH
IN MONDAY'S

**OLDHAM
EVENING
CHRONICLE**

GEORGE & SHEILA
Welcome you to
THE BULLS HEAD
Luncheons, Bar Snacks,
Morning drive breakfasts
**OGDEN, NEWHEY,
ROCHDALE.**
Shaw 847992

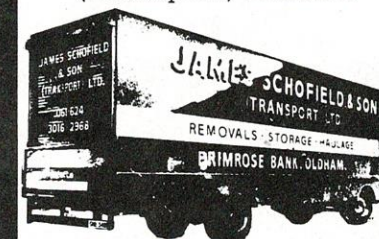
ESTATE AGENTS & VALUERS

Thomas Birch & Co.

32 CLEGG STREET, OLDHAM.
Telephone: 624-4889 / 665-2048

**Free Valuation on Request
Without Obligation**

**James Schofield
& Son**
(Transport) Limited



* All Classes of Haulage
* Any Distance Undertaken
* Expert Packing
* Ample Storage Facilities
Available

PRIMROSE BANK,
Oldham
Tel: 061 624 2968

JOE GALLAGHER
PAINTER and DECORATOR

26 Alva Road Telephone
Watersheddings **061-652 0208**
Oldham

CLUB NEWS



Try! Munro scores against Wakefield.

COMMITTEE - ELECTIONS

CURRENTLY posted in the social club is the nomination sheet for the forthcoming election of members to the committee.

There will be four seats to be filled at the election and annual general meeting in June the three that come up annually by rotation plus the vacant seat caused by the resignation for business reasons of Mr. Frank Diskin a few weeks ago.

Mr. Paul Lovett, who polled the most votes of the unsuccessful candidates last year, was co-opted in place of Mr. Diskin but he has to seek re-election at the annual meeting.

The four retiring officials who are all seeking re-election, therefore, are Mr. Jack Bowden, the vice-chairman, Mr. Keith Broadbent the treasurer, Mr. Derek Hulme and Mr. Paul Lovett.

The nomination sheet will remain posted until 10.30 p.m. on April 28 and all candidates must be proposed and seconded by club members.

A list is also posted for the names of 20 scrutineers, all of whom must be club members, to act as counters at the vote.



Ray Martland and Alan Agar in a tussle for the ball in our home game against Wakefield.

IVAN WILLIAMSON

Mr. Ivan Williamson, the Waterhead and former Spotland Rangers and Ferranti forward, has been appointed to take charge of our recently-formed Supporters' Club under-17 side.

The youngsters have played two games against Leeds in the past few weeks and they were due to meet a side from Leigh at Watersheddings last week-end.

Ivan is keen to get a good squad together for regular fixtures next season and is particularly anxious to recruit youngsters who qualify to play for under-17s for the next two seasons.

"A" TEAM

OUR "A" team, like the colts, has again had a successful season. At the time of writing, the final combination positions were not settled but it seemed certain that runners-up and title places would go to two of three clubs St. Helens, Wigan or Oldham.

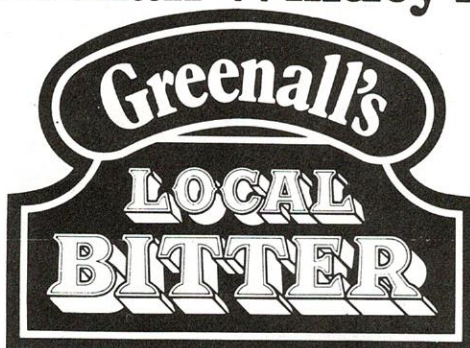
Last season our "A" team won the Lancashire Shield and although we suffered a disappointing first-round defeat by Warrington in this season's knock-out tournament, we have done well to keep among the title chasers in the league.

COLTS LEAGUE TITLE?

The colts, who won two cups last season, are also well to the fore in the hunt for honours this time. They lost at Hull in the semi-final of the cup but stand a good chance of pipping Hull for the league title and doing well in the top-four premiership play-off.



**It's Local Time
in Greenall Whitley Land**



RL THE STATUS SYMBOL



LEISURE WEAR:

	Price	Postage & Packing
1. JUMPERS, 32" - 48" Navy/Red/Black	£9.00	+ 75p
2. HOODED LEISURE TOPS	£9.00	+ £1.00
3. GREAT BRITAIN REPLICA JERSEYS, SHORTS AND SOCKS. Details on request.		
SHORT SLEEVED LEISURE SHIRT Blue Jersey Knit, symbol on sleeve. Small/Medium/Large.	£7.50	+ 60p
4. SWEATSHIRT, 36/38/40/42/44" White with black insignia.	£6.00	+ 60p
TIES, Blue or Maroon.	£3.50	+ 20p

PUBLICATIONS:

Encyclopaedia of Rugby League Football	£7.25	+ 75p
David Watkins, An Autobiography	£6.95	+ 75p
"My Kind of Rugby" by Ray French	£4.95	+ 75p
Shopcheck Rugby League Yearbook	£2.95	+ 75p
Shopcheck Who's Who of Rugby League	£2.95	+ 75p
The Headingley Story 1955-79	£1.75	+ 45p
The Headingley Story 1890-1955	25p	+ 45p

PUBLICATIONS: continued

	Price	Postage & Packing
Official Guide 1980-81	£1.00	+ 40p
Slalom Lager Rugby League Review 1981	60p	+ 30p
History of Humberside Rugby League	60p	+ 30p
International Laws of the Game	50p	+ 20p
Open Rugby Magazine [monthly]	40p	+ 20p
Guide to Grounds	30p	+ 15p
Coaching Manual	15p	+ 20p

MISCELLANEOUS:

Holdall	£5.00	+ £1.50
Shoulder Bag	£3.00	+ £1.50
Autograph Book	95p	+ 40p
Sun Visor	95p	+ 20p
Nickel Key Ring	95p	+ 20p
Playing Cards	85p	+ 20p
Felt Tip Pen Red/Blue/Black	45p	+ 15p
Badges: Oval	40p	+ 15p
Oblong	20p	+ 15p
Leather Key Ring	40p	+ 20p
Car Sticker	20p	+ 15p
Carrier Bag	10p	+ 15p

Programme list on request

Please send order and remittance to:

The Public Relations Department, The Rugby Football League,
180 Chapeltown Road, LEEDS LS7 4HT.

Prices from March 1981

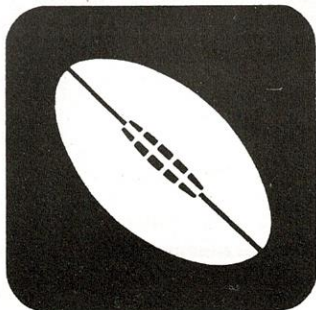
OUR GEOFF'S TESTIMONIAL



It was Geoff Munro's night at the Rugby League Roadshow when Oldham players past and present turned up to support Geoff's testimonial.

Seton Products

Support OLDHAM RLFC
By donating our Elastic Support Bandages
etc.



SUPPORTERS CLUB NOTES

Anyone wishing to become a member of the Supporters Club may do so at any Canteen or in the Social Club. **Price:** £1.00 (including a Diary)

Forthcoming events in our Social Club, run by the Supporters Club.

An Easter Bonnet Parade - on Saturday 18th April, 1981. Admission Adults £1.00, Children 60p. 8 p.m. - 12 Midnight (including supper)

The Player of The Year Dance on Friday 24th April, 1981. Cabaret & Disco By Vic Preston. Admission £1.00 8 p.m. - 12 Midnight.

Annual Pram Race on Monday 25th May, 1981. To leave the Social Club at 7 p.m. Followed by a Disco & Presentation from 9 p.m - 12 midnight Admission 50p.

Lancashire Federation of Rugby League Supporters Club Annual Player of the Year Awards and Rugby League Queen Competition. In our Social Club on Friday May 29th, 1981 8 p.m. - 1 a.m. Cabaret & Dancing. Tickets £1.00 each. From any Supporters Club Committee Member.
(A number of Star Player's in attendance)

Wembley Draw on Tuesday 21st April, 1981 - Draw at 9 p.m. Potato Pie Supper **Free to all Supporters Club Members.** Small charge to non-members. Buy your Draw Tickets in our Canteens today or in the Social Club.
Prizes: Cup Winners £25.00 Runners up £10.00 Losing semi-finalists £2.50 All other teams £1.00 **Tickets** 50p per book.

The Trumanns' Man of Steel to be held at the **Golden Garter** on Wednesday 13th May, 1981. Tickets may be ordered from any Canteens or the Social Club.

Metal Supporters Club Badges are on sale at **60p**, **Blazer Badges** **£7.50** each. **Oldham R.L.F.C. Sweaters** sizes are 34, 36, 38, 40 in red, these are priced at **£10** each. **Red & White Rugby Shirts** sizes 30,32 **£6.50** each, 34,36 **£8.75** 40,42 **£10.35**. Red & White **Scarves** at **£1.75**. **Bobhats** **£1.25** each. **Colts Car Stickers** **45p** each. All items can be bought from any canteen or in the Social Club at any time.

Today's Match Ball presented by



R. TINDALL (FABRICATIONS) LTD.
Osbourne Industrial Estate, Waddington Street, Oldham.



The cup winner.



Slalom Lager

Brewed by Matthew Brown



Carlisle RL Club elected to Division 2.

Brian Batty.
Daily Mail

Carlisle's entry to the Second Division has given the game further opportunity to develop following the success of promotion bound Fulham.

It is clear though that the Cumbrian club's situation contrasts sharply with that of the Londoners in many ways.

Carlisle do not have the same population or the cash to call on and their arrival in the game does not quite capture the imagination of sports followers.

But at the same time there is no reason why they should not succeed and a lot of people are going to compare their efforts with those of Fulham which would be a bit unfair.

Carlisle's chairman Jim Bendall made it clear to representatives of the League's clubs in Leeds that his Rugby League side will have to stand on its own.

'We do not throw money around like some Soccer clubs and we won't be selling off players to buy Rugby League men,' he said.

But he is confident that cash will be found to recruit a team and support will be forthcoming to back it in the Second Division.

Fortunately Carlisle have been given far more time than Fulham had to find a playing staff so there is no real need for any panic.

Fulham have spent slightly more than £200,000 in their first season and I cannot visualise Carlisle being able to spend more than half that amount but I hope I am wrong.

And I cannot see them approaching Fulham's average gates of 6,000 plus - double what they had expected before they actually kicked off at Craven Cottage.

Chairman Bendall, a successful businessman who is a racehorse owner and a former scratch golfer, seems a shrewd enough man to have sized up the problems he has to surmount.

If Carlisle can attract players and fans from the Rugby Union area of the border country then it will be an important step for the future.

Not only would a couple of top Rugby Union players benefit Carlisle in home matches but they would help attendances at other clubs.

There was only slight opposition to Carlisle before they were admitted to the League and this stemmed from cautiousness more than anything so let us hope they make a success on and off the field.



PRINTING, COPYING, TYPING, Letraset & GRAPHIC PRODUCTS

KWIKPRINT



**INSTANT PRINTING
& GRAPHICS CENTRE**

Municipal Buildings, 75, Union Street, Oldham. OL1 1HL Telephone: 061-620 4824

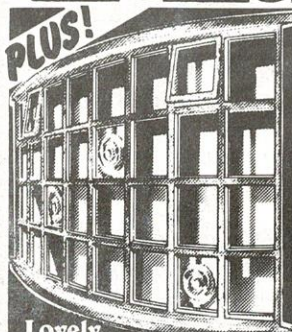
**Add a touch
of class
with Flat
and Bay
Windows
in Natural
Fine**



QUALITY ASSURED

**VISIT OUR NEW
FACTORY/SHOWROOM
OPEN WEEKDAYS
10am-6pm
SUNDAY 10 am-2pm.**

☐ DROYLSDEN
☐ OLDHAM OLDHAM ROAD MANCHESTER
☐ MONSALL RD WILSONS BREWERY
☐ MONSALL HOSPITAL
☐ WINDOWCARE MONSALL MILL



**Lovely
range of Georgian
Flat and Bay window
styles for you to
choose from.**

**FOR INFORMATION
TODAY-RING OUR
ACTION LINE
061-205 8741**

- Windowcare's exclusive timber treatment means that your lovely windows are virtually maintenance free. The wood keeps its natural good looks for years and years.
- Luxury double glazing fitted as standard, single glazing optional.
- All windows tailor-made in our new fully equipped joinery department, ensuring best possible quality and value for money.
- Increase the value of your home and save £££...s on fuel bills and re-painting. A double financial benefit.
- Comprehensive five year guarantee.

Post to Windowcare Ltd., Freepost, Monsall Mill, Manchester, M10 8NR. Tel: 061-205 9416/8741.
For East Yorkshire and Teeside Tel: Keyingham (09644) 2387.

I would like further details on ☐ Hardwood Bay Windows

☐ Flat Windows ☐ Georgian Windows

(tick boxes required) ☐ Low Cost Repayments

NAME _____

ADDRESS _____

TEL. NO. _____

WINDOWCARE



**FOR
WINDOWS
YOU'LL BE
PROUD TO OWN
POST TODAY**

FIRST TEAM FIXTURES 1980/81

Date	Opponent	F. A.
Aug. 3 Sun.	Rochdale (Charity Match)	32 - 15
Aug. 10 Sun.	St. Helens (Friendly)	12 - 30
Aug. 17 Sun.	Swinton (County Cup)	11 - 5
Aug. 24 Sun.	County Cup 2nd Round	15 - 13
Aug. 31 Sun.	Castleford	14 - 14
Sept. 7 Sun.	Bradford	10 - 21
Sept. 14 Sun.	Featherstone	17 - 32
Sept. 21 Sun.	Hull	11 - 16
Sept. 28 Sun.	Leeds	14 - 16
Oct. 5 Sun.	Leigh	15 - 12
Oct. 12 Sun.		
Oct. 19 Sun.	Widnes	18 - 28
Oct. 26 Sun.	Workington	18 - 10
Nov. 2 Sun.		
Nov. 9 Sun.	Featherstone	10 - 31
Nov. 16 Sun.	Bradford	9 - 2
Nov. 19 Wed.	Salford	22 - 7
Nov. 23 Sun.	John Player York	9 - 11
Nov. 30 Sun.	Wakefield	15 - 24
Dec. 7 Sun.	Workington	4 - 25
Dec. 14 Sun.	Widnes	
Dec. 21 Sun.	Hull K.R.	9 - 27
Dec. 28 Fri.	St. Helens	10 - 11
Boxing Day		2 - 1
Dec. 28 Sun.	Hull	2 - 30
Jan. 1 Thurs.	Warrington	11 - 27
New Years Day		
Jan. 4 Sun.	Barrow	19 - 12
Jan. 11 Sun.	Leeds	20 - 11
Jan. 18 Sun.	Castleford	
Jan. 25 Sun.		8 - 15
Feb. 1 Sun.	Barrow	13 - 10
Feb. 8 Sun.	Halifax	11 - 2
Feb. 15 Sun.	Challenge Cup Blackpool	
Feb. 22 Sun.	Hull K.R.	
Mar. 1 Sun.	Challenge Cup 2nd Round	
Mar. 8 Sun.	Warrington	
Mar. 15 Sun.		
Mar. 22 Sun.	Halifax	
Mar. 29 Sun.	Leigh	
Apr. 5 Sun.	Wakefield	
Apr. 12		
Apr. 17 Fri.	St. Helens	
Good Friday		
Apr. 20 Mon.	Salford	
Easter Monday		

'A' TEAM FIXTURES 1980/81

Date	Opponent	F. A.
Aug. 7 Thurs.	Higginshaw (Friendly)	26 - 2
Aug. 14 Thurs.	Saddleworth Rangers	p
Sept. 3 Wed.	Salford	6 - 13
Sept. 9 Fri.	Warrington L.C.C.S.	2 - 8
Sept. 18 Thurs.	Swinton	27 - 23
Sept. 25 Thurs.	St. Helens	6 - 15
Oct. 2 Thurs.	Leigh	10 - 23
Oct. 9 Thurs.	Rochdale Hornets	16 - 13
Oct. 16 Thurs.	Widnes	12 - 11
Oct. 18 Sat.	Whitehaven	18 - 10
Oct. 25 Sat.	Workington	20 - 14
Oct. 30 Thurs.	Wigan	15 - 29
Nov. 8 Sat.	Blackpool	7 - 8
Nov. 14 Fri.		
Nov. 20 Thurs.	Salford	p
Nov. 27 Thurs.	Swinton	16 - 11
Dec. 4 Thurs.	Wigan	14 - 13
Dec. 11 Thurs.	Widnes	18 - 7
Jan. 3 Sat.	Barrow	10 - 8
Jan. 9 Fri.	St. Helens	5 - 16
Jan. 17 Sat.	Whitehaven	7 - 0
Jan. 31 Sat.	Barrow	21 - 9
Feb. 5 Thurs.	Warrington	8 - 14
Feb. 19 Thurs.	Blackpool	11 - 0
Mar. 6 Fri.	Warrington	
Mar. 14 Sat.	Workington	
Mar. 19 Thurs.	Rochdale	
Mar. 26 Thurs.	Leigh	

Harvey Ashworth

(manchester Ltd.)

(PRESIDENT OLDHAM RUGBY LEAGUE Football Club)
The Abattoir, River Park Road, Manchester 10
Tel: 061-223 2097

TOP AMATEUR MATCHES STILL TO COME

By Alan Burke

Public Relations Officer,
Oldham Amateur Rugby League.

1980-81 has been the season when the Oldham Amateur Rugby League has constantly hit the headlines due to the performances of their town teams at both open-age and under-19 age-groups, who are not both awaiting to play in the Finals of their competitions for the first time since the formation of the British Amateur Rugby League Association eight years ago. Indeed, Oldham are on the threshold of becoming the first local league to win both titles in the same season, although the two local sides have both been drawn away in the deciders, with the senior team travelling to Leeds, and with the youth team having to visit Warrington.

Leeds entertain Oldham in the open-age Final next Saturday at Buslingthorpe Vale (2.30pm). Oldham's task is certainly a difficult one as Leeds had a convincing home win over trophy holders Humberside in the semi-finals, and their side includes several County and International players. However, Oldham too had a fine semi-final success against Allerdale of Cumbria, who held Oldham to a 7-all draw at Chamber Colliery but who lost 5-2 at home in the replay. Oldham have previously defeated Bradford and Huddersfield in the competition and have been expertly guided to the Final by coach, and former Oldham prop-forward, Ken Wilson.

The youth Final between Warrington and Oldham is to take place at Wilderspool on Sunday, May 17 (2.30pm). Warrington are the current holders of the trophy and defeated Oldham in last season's semi-finals. This season, however, Oldham have gained impressive victories against West Cumberland, Wigan, and Saint Helens, and are confident of reversing last year's result. The Oldham under-19s are coached by another former Watersheddings player, Ray Clark, while the team will include Oldham's only International representative this season, Saddleworth prop-forward Mark Rowbottom. Mark appeared for the Great Britain youth team against France last Saturday, while Oldham's only other chance of International honours went to Saint Anne's scrum half Dave Grimbley, who was a reserve for the British open-age team. With County and International selections made on performances in the Inter-League competitions, it certainly seems odd that Oldham, who have reached both Finals, only had two players in a total squad of 40, while teams who Oldham have beaten had many more.

BARLA are also planning an Under-17s County Championship and it is therefore hoped that the Oldham League will be represented on the Lancashire team, after their town-team at that age-group defeated Leigh 45-7, and then went down narrowly away to Widnes, who themselves have gone on to reach the Final against Wigan. This season has also seen the formation of the Greater Manchester Youth League, which has constantly grown in strength throughout its early months and which has helped to continue the steady influx of new players into Rugby League, with several more new youth teams being planned in the areas for next year.

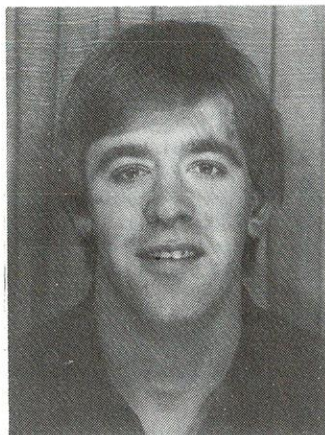
For the remainder of this season, several local teams still have many fixtures to complete. Tomorrow sees the quarter-finals of the Oldham Championship play-off, with the semi-finals next Tuesday, and the Final at Watersheddings on Friday, May 8 (7pm). The Pennine Cup Final will be staged at Thrum Hall, Halifax, on Monday May 4, while the BARLA Stimorol National Cup Finals at both under-19 and open-age levels will be at Borough Park, Blackpool, on Saturday May 23. Tickets, priced £1.50, are now also available from all local clubs for the Oldham Amateur League's Presentation Evening, which this season takes place at the Queen Elizabeth Hall, Civic Centre, Oldham on Saturday June 6.

FOR ALL THE LOCAL AMATEUR RUGBY LEAGUE NEWS:

B.B.C. Radio Manchester (206 medium wave; 95.1 vhf)

BARLA REPORTS Every Friday 6.15 p.m. - 6.30 p.m.

Rugby League Special Every Sunday 3.30 p.m. - 6 p.m. (Amateur news: 5.35 p.m.)



Try and Convert to

WARRINGTON STEEL SERVICES LTD.

Steel Stockholders and Shearers

SHEET AND BLANK SPECIALISTS IN:-

COLD REDUCED
GALVANISED
HOT ROLLED
ZINTEC

CONTACT

GREG PACHE, ALAN COLQUHOUN
ROGER LEE, TREVOR JAMES

NEWTON-LE-WILLOWS (09252) 21122
or TELEX 629544

Offices & Works

Unit 6, Deacon Trading Estate
Earlestown
Newton-le-Willows,
Merseyside WA12 9XN