

## PROGRAMME SPONSOR



## Teams

Watersheddings - Friday 14th August, 1981.

### OLDHAM

Cherry/White Hoops,  
Blue Shorts

1. Martin MURPHY
2. Brian CAFFREY
3. Mick PARRISH
4. Clive HUNTER/  
Alan TAYLOR
5. Phil WARD
6. Ray ASHTON
7. Paddy KIRWAN
8. Alec ALEXANDER/  
Gareth OWEN
9. Roger O'MAHONEY
10. Billy HARRIS
11. Bob MORDELL/  
Gordon POLLARD
12. David NICHOLSON
13. Terry FLANAGAN

### SALFORD

Red Shirts, White Shorts

1. Steve RULE
2. Keith FIELDING
3. David STEVENSON
4. Colin WHITFIELD
5. Morris RICHARDS
6. Bill FRANCIS
7. Steve NASH
8. Mick COULMAN
9. Paul O'NEILL
10. Malcolm YATES
11. Howard THOMAS
12. Chris McGREAL
13. Stewart WILLIAMS

**NEXT MATCH AT WATERSHEDDINGS**

Sunday August 30th - HUNSLET

14-8-81  
**OLDHAM**

RUGBY LEAGUE 81/2  
**FORSHAW'S LANCASHIRE CUP**



**SALFORD**



# GEORGE HILL

(OLDHAM) LTD

## SPUR



LAUAN SOLID TIMBER  
HAND CARVED DOORS



PEWTER

BRONZE

NEW SPUR ALUMINIUM

## Garador

WHITE PLAS

TEAK TYPE PLAS

## HILLPLAS

You can do almost  
anything with  
HILLPLAS

SCOTTFIELD SAW MILLS  
ASHTON ROAD, OLDHAM  
Phone: 061-652 7421

### OLDHAM RUGBY LEAGUE FOOTBALL CLUB OFFICIALS The Pavilion, Watersheddings, Oldham Tel: 061-652 5244 & 061-624 4865

**President:** H.V. Ashworth  
**Chairman:** R. Hatton  
**Vice-Chairman:** J. Bowden  
**Treasurer:** K. Broadbent

**Committee:** E. Buckley, J. Hall, P. Lovatt, R. Ogden, K. Potter, N. Tench

**Secretary:** Paul Lovett

**Coaching Staff:** Frank Myler (Coach), Peter Smethurst (Ass. Coach),  
Brian Gartland (Colts Coach)

#### Professional Playing Staff

Alex Alexander - Ray Ashton - Brian Caffrey - Barrie Connor - Leslie Cook - Mike Cowley -  
Pasquale D'Adamo - Stephen Dobb - Terry Flanagan - Andrew Goodway - Colin Hawkyard -  
Steve Herbert - Clive Hunter - Paddy Kirwan - Steve Littler - Paul Lowndes - Bob Mordell -  
Geoff Munro - Martin Murphy - David Nicholson - Tony Ogden - Roger O'Mahoney -  
Denis O'Neill - Mike O'Rourke - Gareth Owen - Johnny Paterson - Alan Platt - Gordon Pollard -  
Alan Taylor - Gary Walczak - Joe Warburton - Phil Ward - Mike Worrall

**Doctor:** Dr. D. Walton **Hon. Consultant Orthopaedic Surgeon:** Mr. H. Thompson  
**Physiotherapist:** Mr. A. Bonelle **Asst. Physiotherapist:** Mr. J. Watkins  
**Financial & Admin. Manager:** Mr. John Howard Tel: 061-620 4870  
**Commercial Manager:** Franny Ward  
**Social Club Manager:** Kevin Wilkinson Tel: 061-624 0386 **Groundsman:** J. Walker  
**Asst. Groundsman:** W. Caine **Official Time Keeper:** J. Roscoe

#### CLUB RECORDS

Record Victory	67-6 against Liverpool City April 59
Record defeat	11-67 by Hull K.R. Sept. 78
Record attendance	28,000 v Huddersfield Feb 24th 1912
Record receipts	£9,100 v Wakefield 24th Feb: 1980
Record transfer fee paid	£18,500 to Hunslet for Mick Parrish Sept. 1980
Record transfer fee received	£11,002: 10s from Workington for Ike Southward Jan 62
Record try scorer	Reg Farrar 49 tries 1921/22 season
Record goal scorer	Bernard Ganley 224 goals 1957/58 season
Record point scorer	Bernard Ganley 28 pts v Liverpool City April 59
First game	October 21 1876 v Stalybridge
Highest number of Points Scored	Bernard Ganley 2881
Most Appearances	Joe Ferguson 685
Most Tries	Pre 1900 Jack Hirst 233 Since 1900 Alan Davies 182

#### CLUB HONOURS

Rugby League Championship Play-off winners:	1909-10, 1910-11 and 1956-57
Runners-up:	1906-07, 1907-08, 1908-09, 1921-22 and 1954-55
First Division Champions:	1904-05
Second Division Champions:	1963-64
Rugby League Challenge Cup winners:	1898-99, 1924-25, 1926-27
Runners-up:	1906-07, 1911-12, 1923-24 and 1925-26
Lancashire Cup winners:	1907-08, 1910-11, 1913-14, 1919-20, 1924-25, 1933-24, 1956-57, 1957-58 and 1958-59
Runners-up:	1908-09, 1911-12, 1918-19, 1921-22, 1954-55, 1966-67 and 1968-69
Lancashire Championship winners:	1907-08, 1909-10, 1921-22, 1956-57 and 1957-58
Runners-up:	1908-09, 1910-11, 1911-12, 1919-20, 1923-24 and 1954-55
Lancashire Shield winners:	1975-76 1979-80
Colts Premiership Trophy:	1979-80



## RETURN OF THE RED DEVILS

The visit of Salford this evening for what should be a tremendously exciting Forshaw's Lancashire Cup first-round tie will inevitably revive memories of last year's second-round clash here at Watersheddings.

In a real thriller Oldham came back from the dead in the last few minutes to snatch victory in the dying seconds when Bob Mordell sold an outrageous dummy, Ray Ashton went in by the posts and Terry Flanagan calmly stepped up to land the winning goal almost as the hooter sounded.

After that early-season drama, the fortunes of both clubs dipped a little as they struggled to hold their heads above water in the First Division.

Oldham took three points off the Red Devils with a handsome win in the league at the Willows and a home draw right at the end of last season which, to some extent, was of academic interest only as both teams were by then relegated. Since the end of last season a lot more changes have taken place at Oldham than at Salford. But one of the biggest events at the Willows was the capture of London Welsh RU forward Harold Thomas, who actually played here as A N Other in the final game of last season.

Thomas, a big forward, has moved North and is living in the Salford area and the club hope he will be capable of following in the footsteps of so many other ex-Union men at the Willows who have really set the place alight over the past 15 years or so.

More pleasing news for Reds' fans was the close-season capture of 19-year-old Wigan St. Patrick's centre Gerrard Byrne and, more recently, the return to full fitness of one of the unluckiest players in the game, Ronnie Dootson.

Dootson has broken the same leg twice since joining Salford from Wigan and all fans will truly wish him well now that he has so bravely battled back to the reckoning.

Outgoing transfers from the Willows recently involved Frank Wilson and a much younger player, Keith Latham. Frank looked a banker bet to join new club Cardiff but, at the 11th hour, Swinton moved in for him and, at the time of writing, there was a distinct possibility that he would be Station Road-bound. Latham was ear-marked for Blackpool Borough one of many signings made in recent weeks by the Seaside club.

The result is that the Salford side is very similar to last year's with one notable exception the return of the fastest winger in the game, Keith Fielding.

With accurate marksman Steve Rule at full back, Fielding and Richards on the wings and Whitfield and Stevenson in the centre, Salford possess, on paper, one of the most lethal back divisions in the game, let alone the Second Division. At half-back they don't come any more experienced than internationals Steve Nash and Bill Francis, our former player-coach, while there are few more experienced props around than Mike Coulman, still going strong after many seasons at Weaste.

Hooker Paul O'Neill is regarded as one of the best young hookers in the game and the battle for possession could be the biggest single factor of all in deciding which of the two sides goes into the hat for the second round.

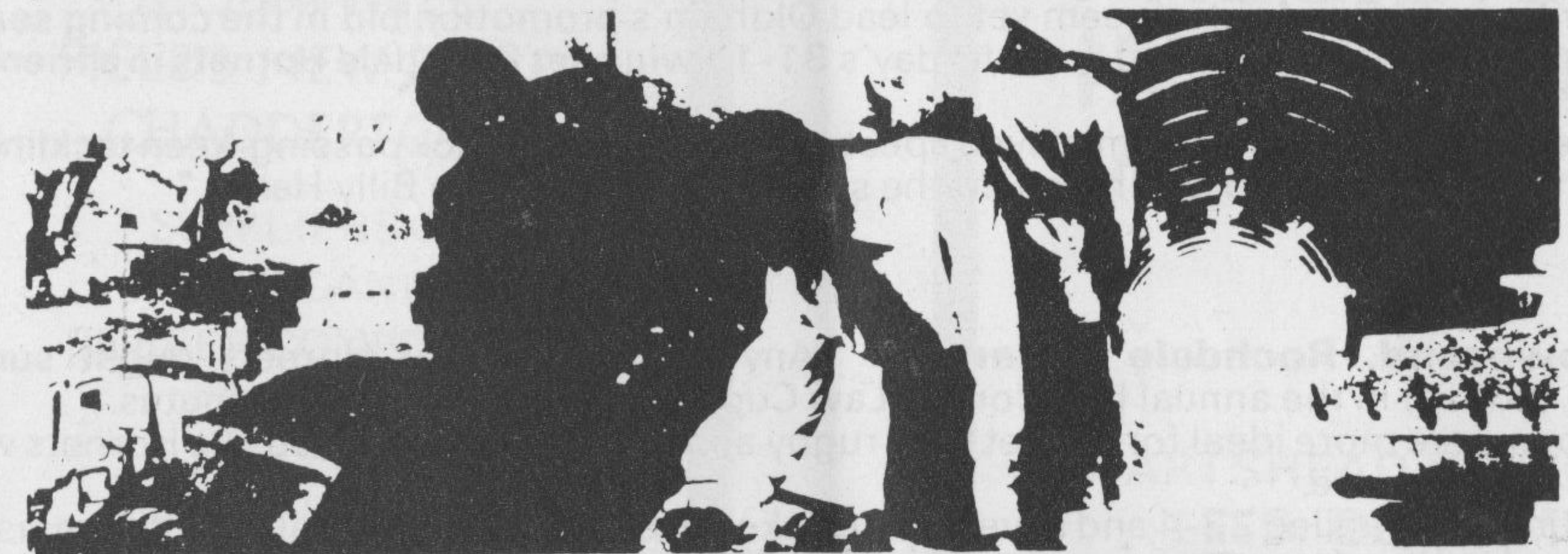
## TENCH (sports) LIMITED

☐ S4 ARNDALE CENTRE  
MIDDLETON  
MANCHESTER  
Telephone 061-643 7515

☐ 16 THE PARADE  
SWINTON  
MANCHESTER  
Telephone 061-794 0995

# QUEGHAN

## pacemakers in civil engineering



**Queghan House, off Shaw Road, Oldham, Lancs.**

**Telephone 061-620 2115/6/7**



# WHAT THE PAPERS SAY

**By Roger Halstead**  
(Oldham Evening Chronicle)

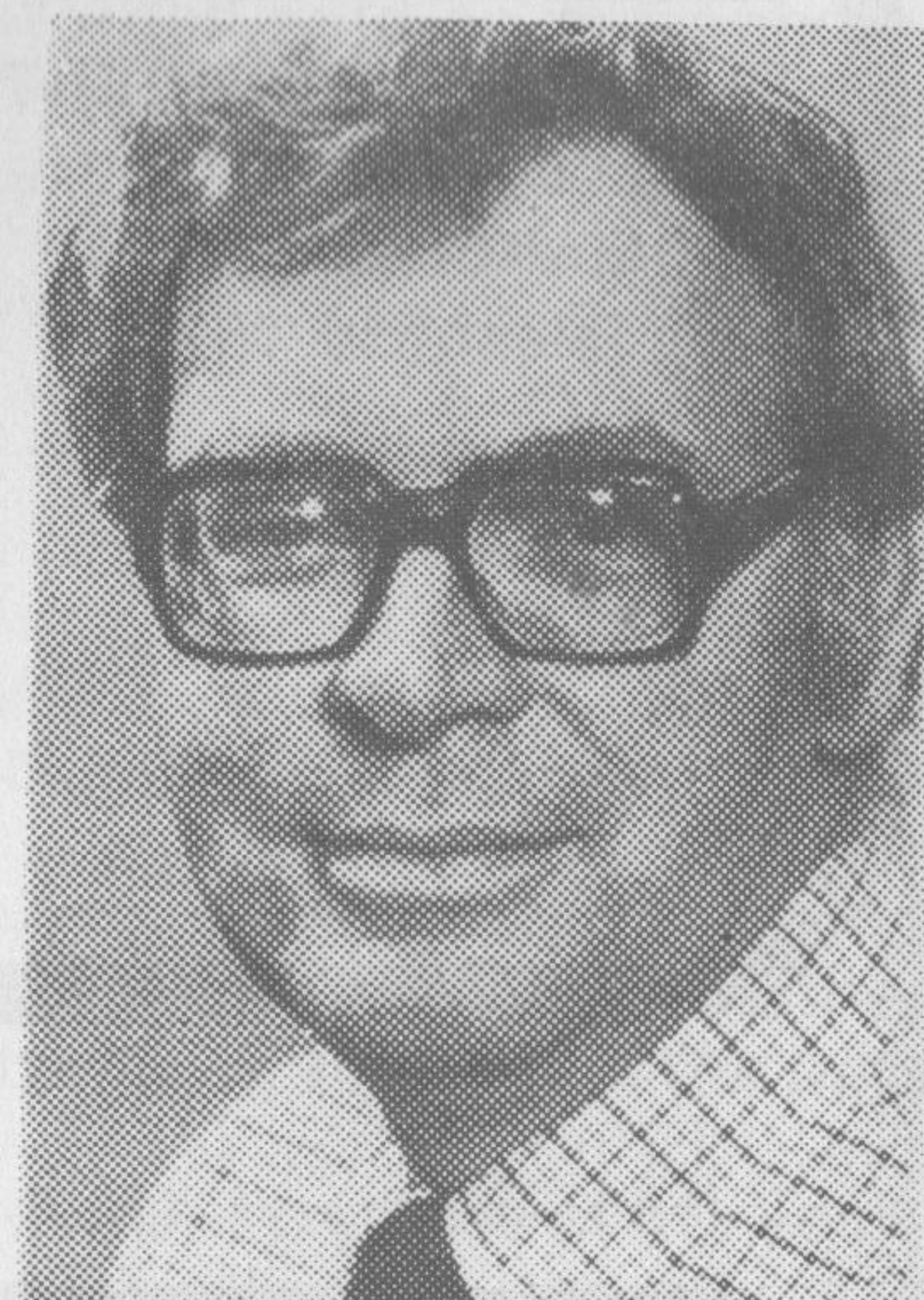
**The start of a regular new feature in which the spotlight is turned on the critics' view of the Oldham club, Oldham's performances on the field, or matters of general Rugby League interest.**

**Law Cup - Rochdale Hornets 15, Oldham 31**

**Roger Halstead, Oldham Evening Chronicle:** "It was the efforts of props Harris and Alexander which were the main reasons for Oldham's supremacy upfront and once that battle was won, the skills of Terry Flanagan, Ray Ashton and Paddy Kirwan soon ensured that Oldham won the war.

"Once Oldham settled and got their noses in front there followed a whirlwind spell of 23 points in 17 minutes which virtually finished the match as a contest by half-time."

"It was during this superb five-try spell that Flanagan and his half-backs looked a class apart. They cut the home defence to ribbons and were at the heart of so many Oldham attacks."



\*\*\*\*\*

**Daily Star:** "It took a second-half punch-up to remind Hornets they were in a rugby match. But they were trailing by 24 points by then after playing in a way that did their pay demands no good at all. Oldham clinched the Charity Cup thanks to a powerhouse performance from their forwards".

\*\*\*\*\*

**Jack McNamara, Manchester Evening News:** "Loose-forward Terry Flanagan and halves Paddy Kirwan and Ray Ashton seem set to lead Oldham's promotion bid in the coming season. The bright young trio all starred in yesterday's 31-15 win over Rochdale Hornets in a friendly at the Athletic Grounds.

"Once they settled down, Oldham played spectacular rugby with slick passing, keen tackling and smart running. They owed much, too, to the steadfast work of prop Billy Harris."

\*\*\*\*\*

**Stan Townsend, Rochdale Observer:** "Any suggestion that Hornets might surprise demoted Oldham in the annual bout for the Law Cup fell apart after just 15 minutes.

"Conditions were more ideal for cricket than rugby and at one stage it looked like Hornets would lose by a cricket score.

"By half-time they trailed 23-4 and never really looked like curing an abysmal lack of organisation in defence. Hardly a Hornets move went by which didn't come amiss because of a handling error but had Hornets been more aggressive in the tackle they might have forced Oldham into matching their problems.

"Not really known as a physical side, Oldham rarely had to put any sting in the tackle to force Hornets to release the ball. And that proved to be the sum total of the difference between the two sides."

## North West Decoiling Ltd.

Steel Stockholders  
Decoilers & Shearers

Tel:  
**0925 573551/2**

Telex:  
**627135**

TRAVEL AS THE TEAM  
DOES



by

**G. Barlow &  
Sons Ltd.**

19 UNION STREET WEST  
OLDHAM Tel: 624 4301

## Reacro Rubber Co. Ltd.

MONA MILL  
FIELDS NEW ROAD  
CHADDERTON

SUPPLIERS OF  
UNVULCANISED  
RUBBER COMPOUNDS

Tel: 061-652 1326

## SERVICE MOULDINGS

**PRECISION  
INJECTION  
MOULDERS**

HARTSHEAD STREET,  
LEES, OLDHAM  
Telephone 061-652 0441





# Forshaws

## BURTONWOOD

# Big Taste BEERS

Burtonwood Brewery Co. (Forshaws) Ltd.,  
Burtonwood, Warrington, Cheshire, WA5 4PJ.

Telephone Newton-le-Willows 4281

## TOM WEBB'S HISTORY OF SALFORD RLFC

Cavendish Street Sunday School in Hulme, Manchester formed their own rugby club in 1873 and for two years played at Moss Side. In 1876 a move was made to the Mile Field, off Trafford Road near to the ferry and the boat house was used as a dressing room. This took the club into Salford. In 1879-80 the club became the Salford Football Club.

More important fixtures were secured and Leeds St. John's (which became the Leeds club), Broughton Rangers, Rochdale Hornets and Swinton opposed the club. Difficulties caused an amalgamation with the Crescent club and from then on the club made considerable progress. Suspended by the Rugby Football Union for breach of the professional rules in 1894-95, the club still remained with the Rugby Union when the Northern Union was formed a year later. Towards April 1896 the club decided to join the Northern Union and indeed played some friendly games before the season ended.

The club adopted turkey red as the team colours in 1883-84, prior to which the jerseys had been amber, black and scarlet. Ever since the club has played in red and during a tour of France in 1935 the club was dubbed the "Red Devils" by the French Rugby League writers across the channel, many years before Manchester United gave themselves the same title.

J. Jackson was the first man to win a county jersey and Eagles was the first international produced by the Club, these being in the Rugby Union days.

By 1914-15 the club had fallen into financial difficulties. The club was in the hands of the Official Receiver but this did not daunt the players, on the contrary it inspired them to greater things. By the end of the season the club reached the top four play off and surprised everyone, especially the crack Huddersfield side, by winning the league championship. Efforts by the Mayor of Salford and other enthusiasts put the club back onto a sound financial basis.

In 1920-21 in the days when Willie Thomas (later a director) was captain, the players went on strike and refused to fulfil a fixture with Broughton Rangers. The club suspended the players for six games and subsequent fixtures were fulfilled by the "A" team. In those days the leading players were H. Launce, W. Clegg, B. Mesley, W.D. John, E. Woods, J.T. Bevan, E. Sykes, G. Currie, H. Whitney, J. Burgess and of course Willie Thomas.

Towards the mid 1920s Salford fell into a playing depression. The services of Lancelot Beaumont Todd, Lance Todd as we remember him, were secured and he took the club to the Lancashire Cup Finals of 1929, 1931, 1934, 1935, 1936 and 1938 losing the first and last but winning the rest. Lance said that the club would not win the Rugby League Challenge Cup until it lost the Lancashire Cup. This was said about 1938 and as soon as the club lost the county cup it immediately won the major trophy.

A few years ago Salford again reached the top. Players well known to most supporters were Maurice Richards, Dave Watkins, Chris Hesketh, Paul Charlton, Colin Dixon, Tony Colloby, Ken Gill, Peter Banner (formerly a ball boy at Rochdale Hornets), Alan Coulman, Stuart Whitehead (from Oldham), Keith Fielding and Eric Prescott among many other prominent performers.

Over the years many great players have also been associated with the Reds. These include Jimmy Lomas (for a while an Oldham player), Billy Williams, Barney Hudson, Gus Risman, Alan Edwards, the fabulous Watkins-Jenkins half back partnership, and such well known men as Day, Dalton, Middleton, Casewell, Gardner and many others.

On the administrative side, Graham Atkinson, the Lancashire county cricketer and Alec Murphy are amongst the best known of a long line of hard workers for the club.

PRINTING, COPYING, TYPING, Letraset & GRAPHIC PRODUCTS

# KWIKPRINT



INSTANT PRINTING  
& GRAPHICS CENTRE

Municipal Buildings, 75, Union Street, Oldham. OL1 1HL Telephone: 061-620 4824



# NEWS FROM THE RUGBY LEAGUE

## LAWS OF THE GAME

By Alex Givvons  
(RL Grade 1 Referee)

As you know, all countries are now to apply rules according to the International Board rules. Most of the changes affect scrummaging and this coincides with instructions from the RL headquarters for referees to strictly apply these laws. I am sure everyone agrees that something must be done. Success can only be achieved with the firm intention to co-operate by players, coaches and directors.

Hookers must now pack with arms over and round the shoulders of the two props. All the front row must pack in a pushing position. This hopefully will prevent the hookers hanging, or laying on the floor and subsequently causing the pack to collapse. Referees will be particularly strong on these offenders.

Packs can now push before the ball goes into the scrum, but must not wander too far. No more than six players may pack down and not more than eight backs are allowed. This means the loose forward can now stand out. At all times the defending team will put the ball into the scrum, the attacking team have the head. The scrum half does not now have to touch the loose forward, but he does have to stay behind the pack at all times.

The ball may now be stolen no matter how many players are involved but once a tackle has been completed, the player succumbs to the tackle, or the referee shouts held. No attempt should be made to either steal the ball or the ball be passed. The yellow card will no longer be used but a player can be cautioned in the presence of his captain at the differential penalty a team can have the option of kicking for touch or taking a tap. They cannot kick for goal. Note the new signal. If the ball or player carrying the ball comes into contact with the referee in the field of play a scrum will only be performed if he thinks play has been irregularly affected.

The substitute rule allows for each countries climatic conditions. Note the new law relating to substitutions, this makes it much easier for everyone to follow.

**International Board rules will apply in all domestic competitions. Summarised below are the major changes to the Laws of the Game which will affect this country.**

### The Scrum (Section 12) Formation of Scrum

The forward in the centre of a front row. (i.e. the hooker) shall bind with his arms over the shoulders of the two supporting forwards.

### Number of Backs and Players in Scrum

No more than six players on each side shall assist in the formation of a scrum and when the ball is in the scrum not more than eight players of each side shall act as backs. (i.e. The loose forward need not pack down).

### Pushing

It is permissible for forwards to push once the scrum has been correctly formed but if it moves an appreciable distance to the disadvantage of any one side before the ball is put in then the Referee shall order the scrum to re-form in its original position.

### Loose Head and Put-in

The attacking team shall have the Loose Head in the scrum and the defending team shall have the Put-in. (This pertains to all scrummages whatever the reason for the award of a scrum).

### Feeding the Scrum

(a) The ball shall be put into the scrum from the referee's side either by a downward throw from not above waist high or by rolling it along the ground. It must be put into the centre of the tunnel formed by opposing front row forwards.

(b) The ball shall not be put in before the scrum has been correctly formed.

(c) There shall be no undue delay in putting the ball into the scrum.

(d) The player putting it in shall not hesitate or dummy and after putting it in he shall immediately retire behind his own pack of forwards.

### Other Players outside Scrum

All players outside the scrum (other than the scrum-half putting the ball in) shall take up positions behind their own forwards and shall remain so until the ball has emerged correctly from the scrum.

### Ball Stealing (Section 11)

Once a tackle has been completed no player shall take or attempt to take the ball from the tackled player.

### Penalty Kick (Section 13)

The use of the yellow card for an official caution is discontinued.

### Substitutes (Section 4)

This remains unchanged, local substitute rules being permitted in order to accommodate the great differences in local climatic conditions.

### Differential Penalty (Section 16)

The International Board countries have adopted our Differential Penalty rule with the amendment that a team may elect to kick for touch and follow this with a second phase tap. This is to say that the Differential Penalty is now a full Penalty except that a kick for goal is not permitted.

### Ball coming into Contact with Referee (Section 16)

In the event of the ball coming into contact with the Referee in the field of play a scrum shall be performed only if, in the Referee's judgement, play is irregularly affected.

### "3 Point" Drop Goal

When a player is fouled in the act of scoring a drop goal, he will be awarded the scoring value of one point and his team will be awarded a penalty underneath the posts with the opportunity of adding a further two points.

### Differential Penalty Signal

When a Differential Penalty is awarded, the referee will adopt the signal for a traditional penalty but will raise and lower his arm twice to indicate that it is a differential award.

### Substitutes

The use of two substitutes shall be permitted provided their names are made known to the Referee prior to the kick-off. A side may make a maximum of four substitutions. (Each substitution may involve any two players and may be made at any time and for any reason with the exception that a substitute may not be brought on simply to take a kick at goal).

PROMOTER: R. HATTON  
OLDHAM IMPROVEMENT  
& GROUND FUND: THE PAVILLION,  
WATERSHEDDINGS, OLDHAM

PROMOTER: K. WILKINSON  
THE PAVILLION, WATERSHEDDINGS, OLDHAM  
THE COMBINED SPORTING  
CLUBS ASSOCIATION OF O.R.L.F.C.

LAST DATE OF SALE: 12 SEPTEMBER 1981

Strike it rich with the  
O.R.L.F.C. Lightning  
Double Chance Ticket

**BIG 3**

**£3,000**  
JACKPOT DRAW

**£2,000**  
INSTANTLY

**£1,000**  
INSTANTLY

PLUS TENS OF THOUSANDS OF POUNDS IN OTHER PRIZES!

A&B TWICER TICKET ONLY **25p**

**AGENTS REQUIRED best commission and insentives paid by any lottery. Over £3,500 prize money paid to agents every lottery. PHONE NOW - 061-620 4870**



## WATERSHEDDINGS SURVEY

Today sees the start of a brand-new season of Rugby League football and what a season it promises to be!

It has been a summer of change in Rugby League with the birth of Cardiff and Carlisle, following Fulham's introduction a year ago, and now talk of Scottish club Hearts also showing interest in taking League north of the border.

The introduction of International Board rules is another major talking point. Whether you like the amendments or not is largely a matter of opinion but no one can argue against the logic of all League-playing countries operating the same set of rules.

Major changes have also taken place here at Watersheddings, not least the appointment in May of Frank Myler and Peter Smethurst to take over control of the playing side.

Frank has had personal experience of every level of Rugby League football. One of the top players of his era, he won honours with Widnes and St. Helens and reached the pinnacle of his career in 1970 when he captained Great Britain in Australia on what was generally regarded as our most successful Down Under tour.

He was player-coach and then coach at Rochdale Hornets when the Hornets had one of their best post-war spells and reached the final of the Player's No. 6 Trophy.

From the Athletic Grounds he returned to Widnes as boss, following Vince Karalius, and was then out of the game for a spell before taking over the reins at Swinton.

It was at Swinton that he struck up the successful partnership with Peter Smethurst, renowned throughout the game as one of the most enthusiastic players and coaches ever to tug a jersey over his head.

Peter really needs no introduction here. He was a popular member of the Oldham side of the early and mid-sixties, playing either centre or second-row, and figured in our three Challenge Cup semi-final appearances with Hull KR in 1964.

Indeed, it was his try at Headingley that did much to earn us our draw when Len McIntyre dropped that last-minute goal that brought the house down.

Since he left Watersheddings, Peter has been on his travels, going to Wembley with both Salford and Leigh and also having a spell both as player and coach with Wigan before returning to his first-ever club, Swinton.

We wish both men a long and successful stay at Watersheddings.

It has also been a period of activity in the transfer market with players coming and going.

Clive Sullivan has returned "home" to Hull; Ken Gwilliam is bound for new club Cardiff; Eric Fitzsimons has crossed the Pennines to join Hunslet.

We made efforts to sign George Nicholls from St. Helens to add experience to our forward strength but the player decided to throw in his lot with Cardiff, whose northern training base in St. Helens is only a few miles from his home. We were more successful in landing two players who played a major role in Frank Myler's Swinton team of last season Alan Taylor and David Nicholson. They come to Watersheddings on the strong recommendation of our coaching staff and we are sure they will quickly prove themselves more than useful signings.

Of course, there could be no such signings were it not for the behind-the-scenes activities. The summer has also seen the launch of our new Double Chance lottery which gives the Punter the chance of winning three major prizes £1,000, £2,000 and £3,000 on one ticket for only 25p.

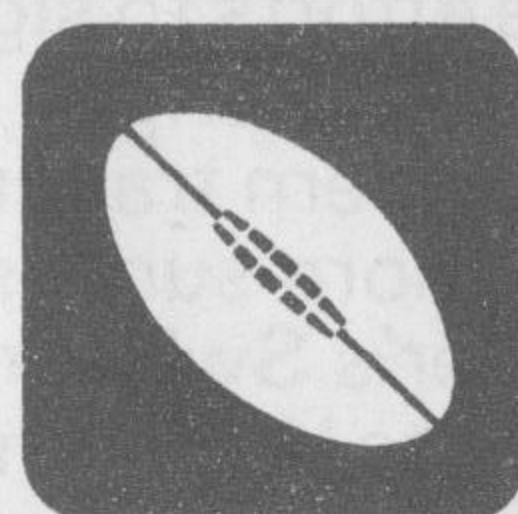
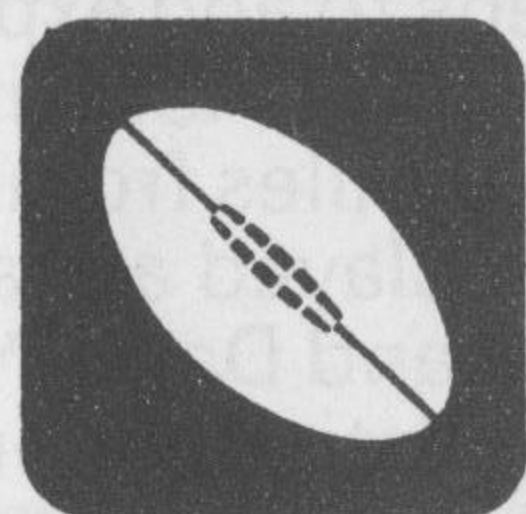
We feel this represents remarkable value for money and we cannot over-estimate the importance of ensuring that the lottery continues to do well.

Whenever you have a "flutter" you are helping the club. Better still, why not become a lottery agent? All you have to do is contact the Clegg Street office (620 4870).



Our new coaching pair, FRANK MYLER (left) and PETER SMETHURST





YOU'LL FIND ALL THE  
OLDHAM LOCAL SPORT

IN DEPTH  
IN MONDAY'S

## OLDHAM EVENING CHRONICLE

GEORGE & SHEILA  
Welcome you to  
**THE BULLS HEAD**

Luncheons, Bar Snacks,  
Morning drive breakfasts  
**OGDEN, NEWHEY,  
ROCHDALE.**

Shaw 847992

James Schofield  
& Son  
(Transport) Limited



- \* All Classes of Haulage
- \* Any Distance Undertaken
- \* Expert Packing
- \* Ample Storage Facilities Available

PRIMROSE BANK,  
Oldham  
Tel: 061 624 2968

### JOE GALLAGHER

PAINTER and DECORATOR

26 Alva Road Telephone  
Watersheddings 061-652 0208  
Oldham

## SUPPORTERS CLUB NOTES

Anyone wishing to join the Supporters Club should contact any Committee Member in the canteens at today's match.

**Membership fee - £1.00** including a diary.

The following items can be purchased at the Souvenir Shop at the Waterhead Park end of the ground.

**Sweaters - £10.00**  
**Blazer Badges - £7.50**  
**Metal Lapel Badges - 65p**

The Supporters Club will be running coaches to Blackpool on Sunday 6th September, 1981 departing at 10.00am and returning at 11.00pm. Seats can be booked in the canteens at today's match.

The Supporters Club are organising a Pram Race on Monday 31st August, 1981 with a Disco in the club from 9.00pm. The first pram leaves the Social Club at 7.00pm and anyone wishing to enter should contact Supporters Club officials in the canteens for an entry form and further details.

## OB AND TETLEY ALES

### OUR SOCIAL CLUB

OPEN NIGHTLY

ROOMS AVAILABLE FOR HIRE

PARTIES, WEDDINGS ETC.

MEMBERSHIP NOT REQUIRED

## TETLEY AND OB ALES



## CELEBRATING NEXT MAY!

**Brian Batty**  
Daily Mail

Rugby League heads off into another season confident that long before next May it will be celebrating its bold step to continue seeking expansion and development.

There seems on the surface no reason to doubt the wisdom of the exciting moves which have led to Carlisle and Cardiff City following Fulham into a sport gaining new admirers every season.

Fulham's fine opening season certainly helped to give the game greater credibility and acceptance throughout the country.

But there are still some people reluctant to admit that the game is on the right track, reserving their judgement as to whether they feel Fulham's feat can be repeated.

I would think that the team building efforts by both Carlisle and Cardiff should dispel these fears. It is clear that both clubs recognise the need to get off to a successful start.

They realise they must make a similar impact although life in the Second Division this season is going to be demanding with around eight clubs likely to be bidding strongly for promotion.

Salford, Oldham, Workington Town, Halifax, Bramley and Blackpool Borough aim to show Carlisle and Cardiff there is no easy way out of the Second Division.

I imagine there will be times when the power struggle in the Second will overshadow that in the First where Widnes look well equipped to face up to the challenge from across the Pennines.

Hull KR have shown how much they relish the taste of glory, spending a world record fee on George Fairbairn to keep a firm foothold at the top and bid to counter that mounting threat from neighbours Hull.

That Hull spending spree from Kiwi pair Dabe O'Hara and James Leuluai on top of recruiting top stand off Dave Topliss is proof of Hull's intentions.

Bradford Northern are seeking a hat-trick of title successes while I expect Castleford to come back strongly again and Leeds seek to re-establish themselves at the top.

Warrington's double trophy triumph and run in the title race as well as reaching the Cup semi-final earned them plenty of admirers last season. Coach Billy Benyon will be anxious to resolve his team problems in going for a repeat effort. Leigh, St. Helens and Wigan are hoping to recapture past glory as newcomers Whitehaven and York seek to prove they can survive in such experienced and battle hardened company.



# INSURANCE?

**Talk person to person**



As Oldham's largest insurance brokers, we offer a full and, most important a personal service for all types of insurance. It's a service we're proud to extend to mortgages, both domestic and industrial. Pop in anytime and you're guaranteed the friendliest of attention. Established over 50 years.

**Whitehead & Lees  
(Insurances) Ltd.**

**B I B A**

The British Insurance Brokers' Association

34, Union Street, Oldham (tel 061-633 2361)  
14, Rossall Road, Cleveleys (tel 0253-855818)



**adidas**

*The mark of a winner*

**adidas**  
OFFICIAL SUPPLIERS OF PLAYING  
KIT & FOOTWEAR TO  
OLDHAM RUGBY LEAGUE  
FOOTBALL CLUB.



# Harvey Ashworth

(manchester Ltd.)

(PRESIDENT OLDHAM RUGBY LEAGUE Football Club)

The Abattoir, River Park Road, Manchester 10

Tel: 061-223 2097

## From the Sports Unit, BBC Radio Manchester

This season BBC Radio Manchester will continue its comprehensive coverage of Rugby League. Each Sunday afternoon, Rugby League Special will be on the air from 3.30pm until 5.15pm, bringing up-to-the-minute news of the afternoon's games and featuring live commentary on one of the top games in the Radio Manchester area, and this season Rugby League Round Up returns at 6.15pm with 45 minutes of reports and interviews from the day's games along with a special spot devoted to Amateur Rugby League. There will also be Rugby League news in the general sports bulletins throughout the week, in Sports Round between 6.02pm and 6.15pm on Friday evening, between 11.25am and 11.35am on Saturday morning, and a preview of the Sunday games just after 5.30pm on Saturday evening. Amateur Rugby League will again have its own programme, BARLA Reports, from 6.15pm to 6.30pm on Friday evening.

BBC Radio Manchester broadcasts on 206 metres Medium Wave and 95.1 VHF.

## SEASON OPENS IN GRAND STYLE

By Alan Burke

Public Relations Officer,  
Oldham Amateur Rugby League.

This weekend also sees the kick-off for the 1981-82 amateur Rugby League season, with a new 'Champion of Champions' competition immediately bringing eight of the country's top sides into opposition for what is hoped will become an annual event as a 'curtain-raiser' to each season. The tournament is being staged at Twist Lane, Leigh, where last season's North-West Counties League Champions, Leigh Miners, will be playing hosts to the top sides from seven various regions, including Waterhead, who have been invited to compete at the current holders of the Oldham Standard Cup.

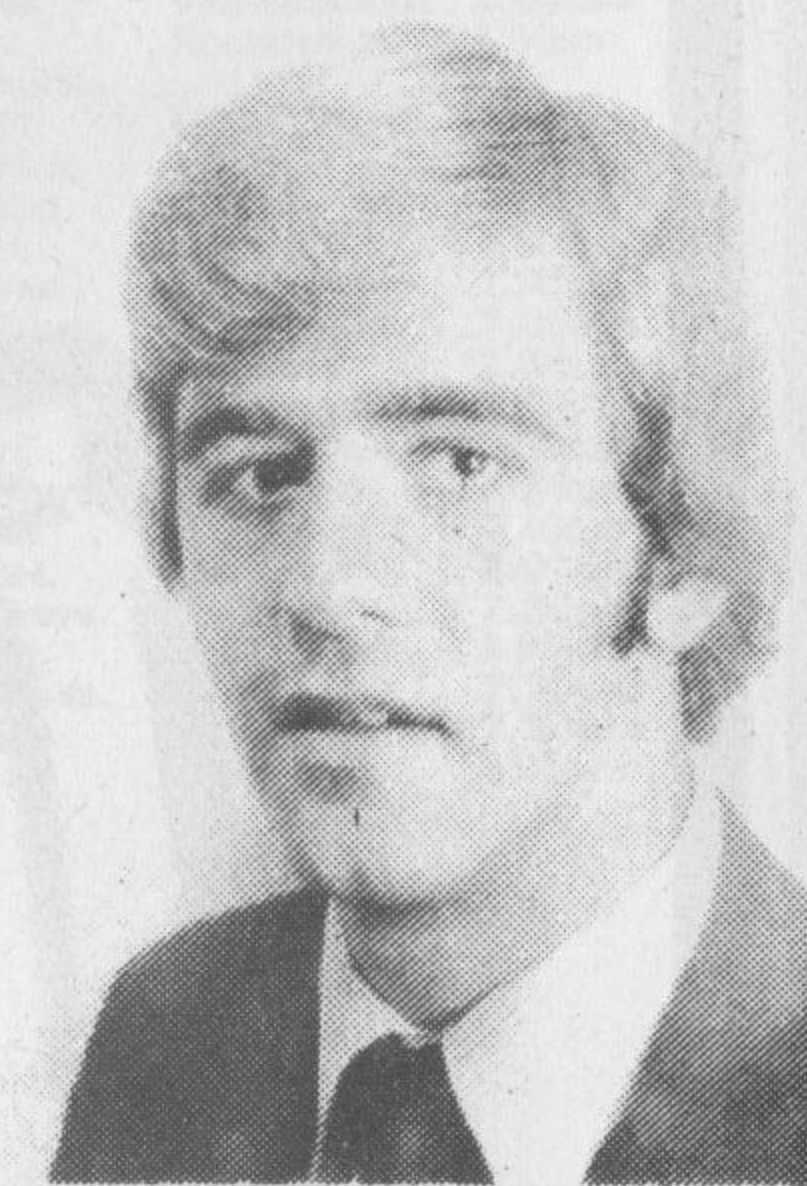
Mayfield, the Pennine League and Oldham League Champions for the past three seasons, are also among the entrants, and are actually involved in the opening match of the competition. Warrington side Crossfields, the holders of the North-West Counties Greenall-Whitley Cup, provide Mayfield's opposition, with that encounter taking place tomorrow (1.15pm). Immediately afterwards, two of the country's most respected sides will take the field, with Dewsbury Celtic facing Wigan Saint Patrick's, both of them being the Champions of their respective areas.

The remaining two First Round matches take place this Sunday, the first of which will see Waterhead making their opening bid for the title, although they possibly face the hardest task of all in meeting Pilkingtons of Saint Helens. Pilkingtons, generally acknowledged as the finest amateur side of the past decade, make their appearance in the tournament as current holders of the BARLA Lancashire-Cumbria Cup, having won that trophy and the National Cup on three occasions each since 1974. Their tie with Waterhead also begins at 1.15pm, while Sunday's second match will feature hosts Leigh Miners along with Widnes League Champions, Simms Cross.

Two semi-finals will both be staged next Saturday, while the Final will take place the following weekend on Saturday, August 29. The competition itself is being sponsored by the Reporter group of newspapers, with a main prize of £200 being awarded to the winning team. The runners-up will receive £100, the semi-finalists will gain £50, while the first round losers will be awarded £25. A new trophy has also been provided and has been named the Graineey Trophy in respect of the two brothers of one of Rugby League's top coaches, Tommy Graineey, who were killed in the Golborne Colliery explosion two years ago.

More locally, one of the brightest prospects for the coming season is the expected continued success of the Greater Manchester Youth League, which was only formulated at the beginning of last season but which has already become one of the most progressive amateur leagues. The League was the first to gain sponsorship for its divisional Championships, and as this assistance could possibly continue in the forthcoming season, the attraction of the League is spreading into further districts. Although last season's fixtures were only based in Oldham and Rochdale, this season will see the introduction of teams from Stockport and Irlam, while several other Manchester sides have been making enquiries. One attraction of the League is that although the matches are highly competitive, the various teams include many youngsters who are new to Rugby League, and thus young players are not facing vastly experienced opposition.

The rapid expansion of the amateur game in Oldham, however, has created one problem in that there is now not enough pitches to accommodate those who wish to play the 13-a-side code. This is especially discouraging for youth teams, who play their matches on Sundays, when several council owned grounds are made unavailable. The Greater Manchester Youth League naturally hope to eventually overcome this problem and have recently received a great boost towards their plans of expanding the League by having been invited to a meeting with the Greater Manchester Council later this month.





# Matthew Brown

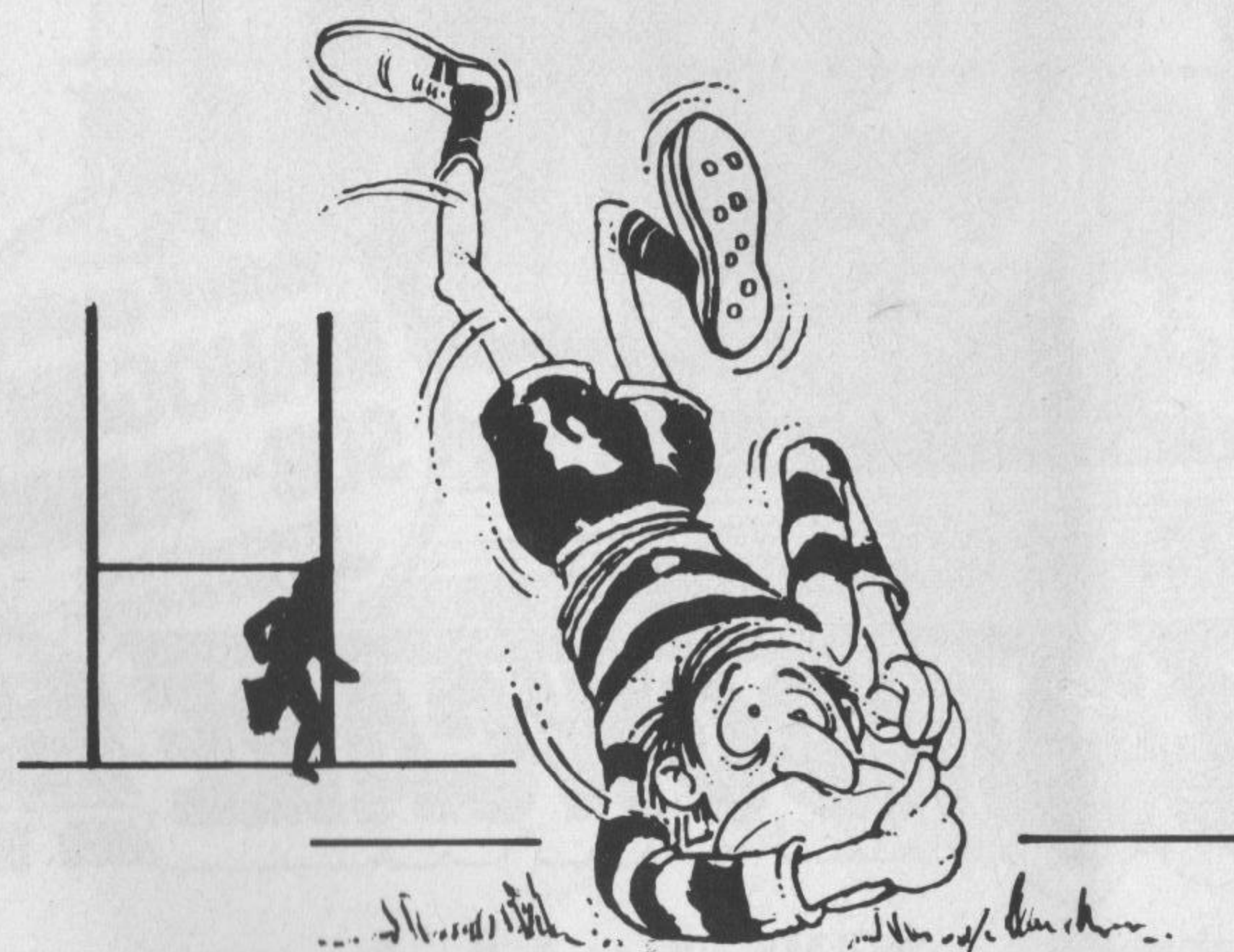
## 'A' Team

	W/L	F	A
<b>H Aug. 30 Sun. Hunslet</b>	<b>3.00pm</b>		
A Sept. 6 Sun. Blackpool B.	3.00pm		
<b>H Sept. 13 Sun. Dewsbury</b>	<b>3.00pm</b>		
A Sept. 20 Sun. Huddersfield	3.00pm		
<b>H Sept. 23 Wed. Swinton</b>	<b>7.30pm</b>		
<b>H Sept. 27 Sun. Doncaster</b>	<b>3.00pm</b>		
A Oct. 4 Sun. Halifax	3.00pm		
<b>H Oct. 11 Sun. Keighley</b>	<b>3.00pm</b>		
A Oct. 25 Sun. Dewsbury	3.30pm		
<b>H Nov. 8 Sun. Carlisle</b>	<b>3.00pm</b>		
A Nov. 15 Sun. Cardiff C.	3.00pm		
<b>H Nov. 22 Sun. Halifax</b>	<b>3.00pm</b>		
A Nov. 29 Sun. Hunslet	2.30pm		
<b>H Dec. 6 Sun. Huyton</b>	<b>3.00pm</b>		
A Dec. 13 Sun. Doncaster	2.30pm		
<b>H Dec. 20 Sun. Workington T.</b>	<b>3.00pm</b>		
A Dec. 26 Sat. Rochdale H.	3.00pm		
A Jan. 3 Sun. Salford	3.00pm		
<b>H Jan. 10 Sun. Batley</b>	<b>3.00pm</b>		
A Jan. 17 Sun. Bramley	3.00pm		
<b>H Jan. 24 Sun. Huddersfield</b>	<b>3.00pm</b>		
<b>H Feb. 7 Sun. Cardiff C.</b>	<b>3.00pm</b>		
A Feb. 21 Sun. Keighley	3.15pm		
A Mar. 7 Sun. Workington T	3.00pm		
<b>H Mar. 14 Sun. Bramley</b>	<b>3.00pm</b>		
A Mar. 21 Sun. Batley	3.00pm		
<b>H Mar. 28 Sun. Blackpool B.</b>	<b>3.00pm</b>		
A Apr. 4 Sun. Swinton	3.00pm		
<b>H Apr. 9 Fri. Rochdale H.</b>	<b>3.00pm</b>		
<b>Good Friday</b>			
<b>H Apr. 12 Mon. Salford</b>	<b>3.00pm</b>		
<b>Easter Monday</b>			
A Apr. 18 Sun. Huyton	3.00pm		
A Apr. 25 Sun. Carlisle	3.00pm		

<b>H Aug.</b>	<b>6 Thurs.</b>	<b>Wigan</b>	<b>7.30pm</b>
<b>H Aug.</b>	<b>13 Thurs.</b>	<b>Oldham A.</b>	<b>7.30pm</b>
<b>A Aug.</b>	<b>20 Thurs.</b>	<b>Swinton</b>	<b>7.30pm</b>
<b>H Aug.</b>	<b>29 Sat.</b>	<b>Workington</b>	<b>3.00pm</b>
<b>H Sept.</b>	<b>3 Thurs.</b>	<b>Blackpool</b>	<b>7.30pm</b>
	Sept. 10 Thurs.		
<b>A Sept.</b>	19 Sat	<b>Barrow</b>	2.30pm
<b>H Sept.</b>	<b>24 Thurs.</b>	<b>Warrington</b>	<b>7.30pm</b>
<b>H Oct.</b>	<b>3 Sat</b>	<b>Whitehaven</b>	<b>3.00pm</b>
<b>A Oct.</b>	9 Fri.	<b>Rochdale H.</b>	<b>7.30pm</b>
	Oct. 15 Thurs.		
<b>A Oct.</b>	24 Sat.	<b>Lancs Shield</b>	2.30pm
<b>A Oct.</b>	29 Thurs.	<b>Leigh</b>	7.30pm
<b>A Nov.</b>	4 Wed.	<b>Wigan</b>	7.30pm
<b>A Nov.</b>	13 Fri.	<b>Widnes</b>	7.30pm
<b>A Nov.</b>	18 Wed.	<b>Salford</b>	7.30pm
<b>H Nov.</b>	<b>26 Thurs.</b>	<b>St. Helens</b>	<b>7.30pm</b>
<b>H Dec.</b>	<b>3 Thurs.</b>	<b>Widnes</b>	<b>7.30pm</b>
<b>A Dec.</b>	19 Sat.	<b>Workington</b>	2.30pm
<b>A Jan.</b>	8 Fri.	<b>Warrington</b>	7.30pm
<b>H Jan</b>	<b>14 Thurs.</b>	<b>Swinton</b>	<b>7.30pm</b>
<b>A Jan.</b>	23 Sat.	<b>St. Helens</b>	7.30pm
<b>H Feb.</b>	<b>13 Sat.</b>	<b>Barrow</b>	<b>3.00pm</b>
<b>H Feb.</b>	<b>18 Thurs.</b>	<b>Salford</b>	<b>7.30pm</b>
<b>A Feb.</b>	27 Sat.	<b>Whitehaven</b>	3.00pm
<b>H Mar.</b>	<b>4 Thurs.</b>	<b>Leigh</b>	<b>7.30pm</b>
<b>H Mar.</b>	<b>13 Sat.</b>	<b>Rochdale H.</b>	<b>7.30pm</b>
<b>A Mar.</b>	27 Sat.	<b>Blackpool</b>	3.00pm

## Colts League

<b>H Aug. 29 Sat.</b>	<b>Hull KR</b>	<b>3.00pm</b>
A Sept. 2 Wed.	Halifax	
<b>H Sept. 5 Sat.</b>	<b>Leeds</b>	<b>3.00pm</b>
A Sept. 12 Sat.	Wakefield T.	3.00pm
<b>H Sept. 19 Sat.</b>	<b>York</b>	<b>3.00pm</b>
A Sept. 26 Sat.	Bramley	3.00pm
<b>H Oct. 3 Sat</b>	<b>Barrow</b>	<b>3.00pm</b>
A Oct. 10 Sat.	Hull KR	3.00pm
<b>H Oct. 17 Sat.</b>	<b>Leigh</b>	<b>3.00pm</b>
<b>H Oct. 24 Sat.</b>	<b>Hunslet</b>	<b>3.00pm</b>
A Oct. 31 Sat.	St. Helens	3.00pm
<b>H Nov. 7 Sat.</b>	<b>Castleford</b>	<b>3.00pm</b>
A Nov. 14 Sat.	Bradford N.	2.30pm
<b>H Nov. 21 Sat.</b>	<b>Featherstone</b>	<b>2.30pm</b>
A Nov. 28 Sat.	Salford	2.30pm
<b>H Dec. 5 Sat.</b>	<b>Bradford N.</b>	<b>2.30pm</b>
A Dec. 12 Sat	Hunslet	2.30pm
<b>H Dec. 19 Sat</b>	<b>Salford</b>	<b>2.30pm</b>
A Jan. 2 Sat.	Featherstone R.	2.30pm
<b>H Jan. 9 Sat.</b>	<b>Bramley</b>	<b>2.30pm</b>
A Jan. 16 Sat.	Leigh	2.30pm
<b>H Jan. 23 Sat.</b>	<b>Hull</b>	<b>3.00pm</b>
A Jan. 30 Sat.	Leeds	3.00pm
<b>H Feb. 6 Sat.</b>	<b>Wakefield T.</b>	<b>3.00pm</b>
Feb. 13 Sat.	Colts Challenge Cup	
<b>H Feb. 20 Sat.</b>	<b>St. Helens</b>	<b>3.00pm</b>
Feb. 27 Sat.	Colts Challenge Cup	
A Mar. 6 Sat.	York	3.00pm
A Mar. 13 Sat.	Castleford	3.00pm
<b>H Mar. 20 Sat.</b>	<b>Halifax</b>	<b>3.00pm</b>
A Mar. 27 Sat.	Barrow	3.00pm
Apr. 3 Sat.		
A Apr. 10 Sat.	Hull	3.00pm





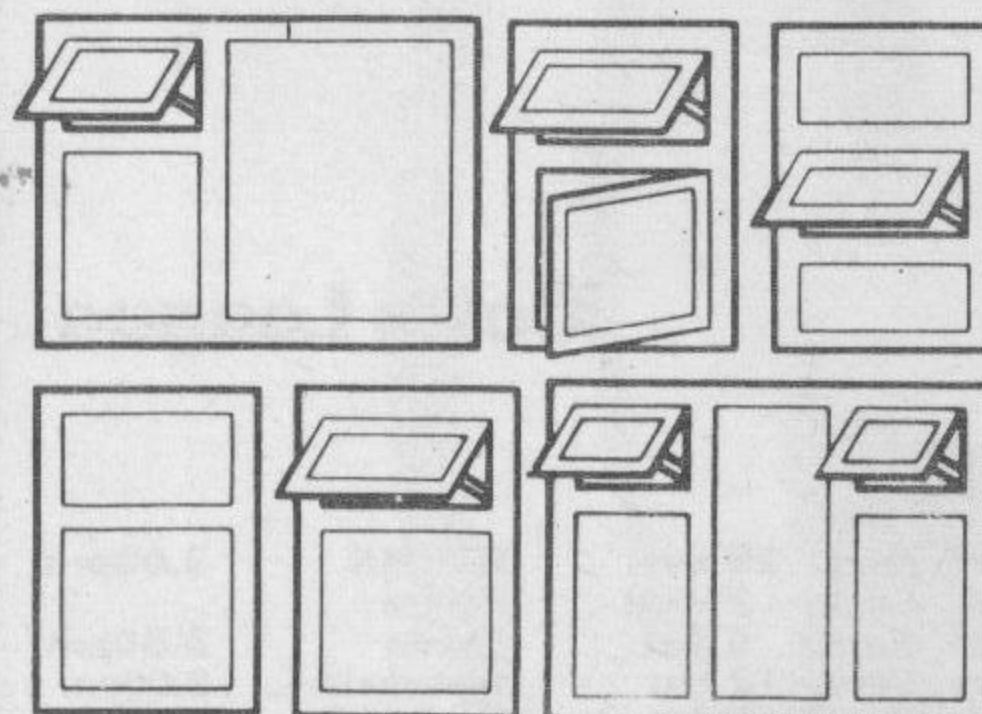
# The best home conversion in years!



Replace those rotten old draughty windows and doors with new 'thermal white' aluminium double glazed windows. New 'thermal white' windows and doors transform your home overnight and will be a lasting investment for

years to come.

They're rot FREE, rust FREE and virtually maintenance FREE—and that means no painting.



Check out the New leading replacement window specialist now and sample our superb range of styles and finishes. You won't find a better all round deal—and that's a fact.

FOR INFORMATION TODAY RING  
OUR ACTION LINE  
**061-205 8741**  
VISIT OUR SHOWROOM  
at: Monsall Mill, Monsall Rd.,  
Newton Heath.

Open weekdays 9a.m.-5p.m.  
Week-ends 10a.m.-2p.m.



## WINDOWCARE

I would like to know more about:

- ☐ White Thermal Aluminium Windows ☐ 3 month deferred payment plan  
☐ Mahogany Windows ☐ Free Patio Door

(Tick boxes required)

NAME \_\_\_\_\_

ADDRESS \_\_\_\_\_

Tel No: \_\_\_\_\_

NO  
STAMP  
NEEDED

Post to Windowcare Ltd., FREEPOST, Monsall Mill, Manchester M10 8NR. Tel: 061-205 9416/8741

Kick off at 12 o'clock at the:-

**DOG & PARTRIDGE**  
Constantine Street,  
Greenacres.

Your Hosts  
**KEVIN & CHRISTINE**  
Lunchtime Snacks available

All the best from  
**Matthew Brown**

THE BREW THAT SPONSORS RUGBY LEAGUE DRINK IT AT:-

**THE SHEPHERDS BOY**  
Huddersfield Road,  
Oldham

Your Hosts  
**COLIN & NORMA**

All the best from  
**Matthew Brown**

Convert to Slalom Lager at:-

**PRINCE OF WALES**  
Spencer Street,  
Oldham.

Your Hosts  
**PETER & MILDRED**  
Bar Snacks available

All the best from  
**Matthew Brown**