

# PROGRAMME SPONSOR

## SWINTON INSURANCE

FOR ALL YOUR  
INSURANCE REQUIREMENTS

Branches throughout the North

Head Office: Swinton House, 31-33 Princess Street, Manchester M2 4EW  
Telephone 061-236 8697 (10 lines)

### OLDHAM

Red, White Hooped Jerseys  
with Red Sleeves  
Navy Shorts

1. Alan Taylor
2. Phil Ward
3. Clive Hunter
4. Mick Parrish
5. Brian Caffrey
6. Ray Ashton
7. Paddy Kirwan
8. Adrian Alexander
9. Roger O'Mahoney
10. Billy Harris
11. Mike Worrall
12. Dave Nicholson
13. Terry Flanagan

#### Subs

14. T.B.A.
15. T.B.A.

### MATCH BALL SPONSOR

O.R.L.F.C.  
Development  
Association  
Become an  
Agent today

Tel:  
061-620 4870  
24 hour  
service

Referee: Mr. S. Wall (Leigh)  
Touch Judges:  
Mr. M. S. Loftus (Warrington)  
Mr. J. C. Stanton (Warrington)

### DEWSBURY

Red, Amber and Black  
Hooped Jerseys  
White Shorts

- Don Richardson 1.
- Shaun Dunford 2.
- Mick Collins 3.
- John Hughes 4.
- Steve Brunt 5.
- Ernie Lowe 6.
- Garry Jennings 7.
- David Briggs 8.
- Geoff Catling 9.
- Keith Mason 10.
- Arnie Long 11.
- Graham Mook 12.
- Alan Craven 13.

#### Sub

- T.B.A. 14.
- T.B.A. 15.

SCRUMS					PENALTIES					SCRUMS					PENALTIES				
1	2	3	4	5	1	2	3	4	5	1	2	3	4	5	1	2	3	4	5
6	7	8	9	10	6	7	8	9	10	6	7	8	9	10	6	7	8	9	10
11	12	13	14	15	11	12	13	14	15	11	12	13	14	15	11	12	13	14	15
16	17	18	19	20	16	17	18	19	20	16	17	18	19	20	16	17	18	19	20
21	22	23	24	25	21	22	23	24	25	21	22	23	24	25	21	22	23	24	25

### NEXT MATCHES AT WATERSHEDDINGS

1st. Team v Swinton, Wednesday, Sept. 23rd, 7.30 p.m. kick-off Second Division  
1st Team v Doncaster, Sunday, Sept 27th, 3 p.m. kick-off Second Division  
"A" Team v Warrington, Thursday, Sept 24th, 7.30 p.m. kick-off  
Colts v York, Saturday, Sept 19th, 3 p.m. kick-off



# Slalom Lager

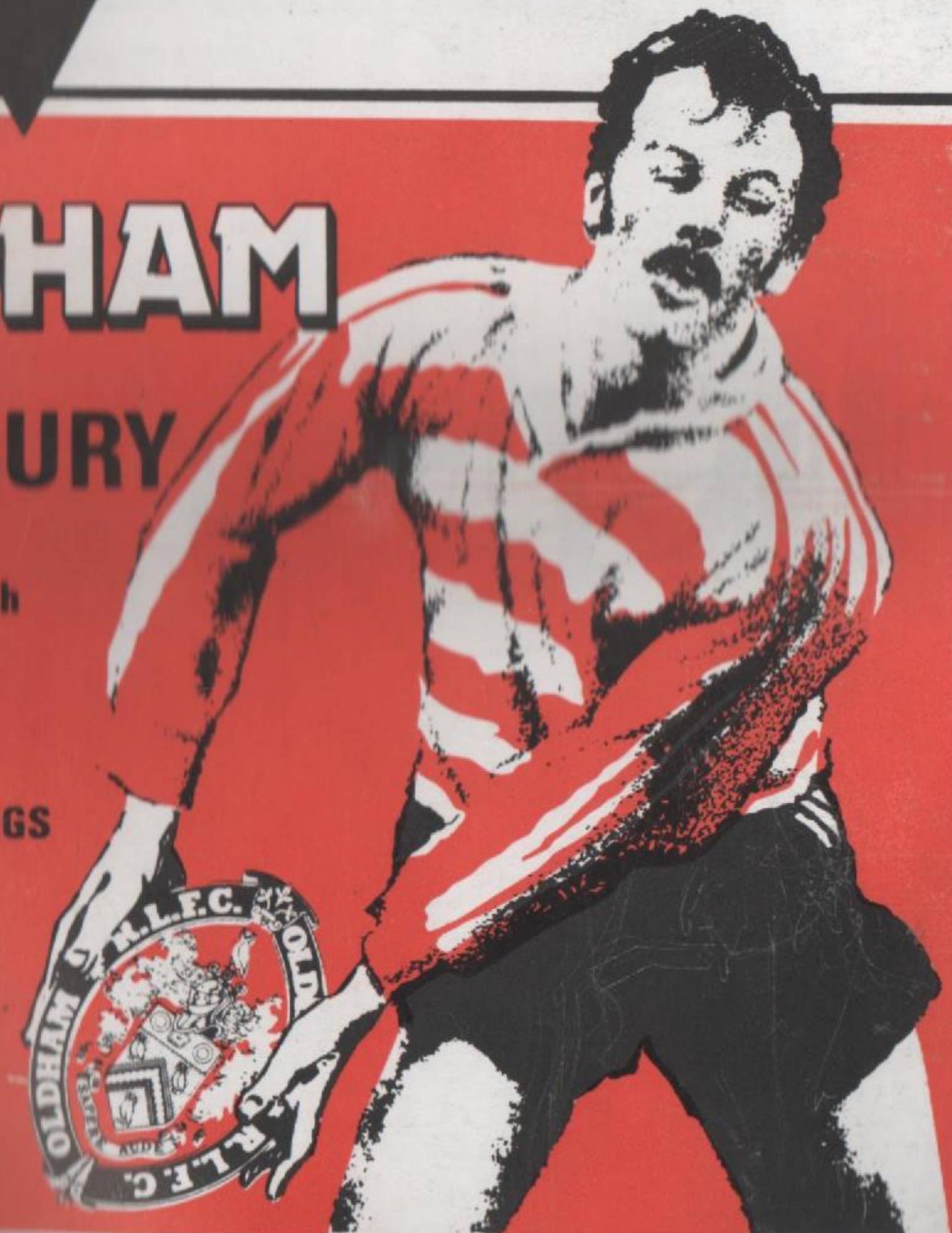
## RUGBY LEAGUE CHAMPIONSHIP DIVISION TWO

# OLDHAM VORUS DEWSBURY

SUNDAY  
SEPTEMBER 13th  
1981

AT  
WATERSHEDDINGS

Kick-off 3 p.m.



OFFICIAL PROGRAMME 25p



# GEORGE HILL

(OLDHAM) LTD

# SPUR



ALAN SOLID TIMBER  
HAND CARVED DOORS



PEWTER  
BRONZE

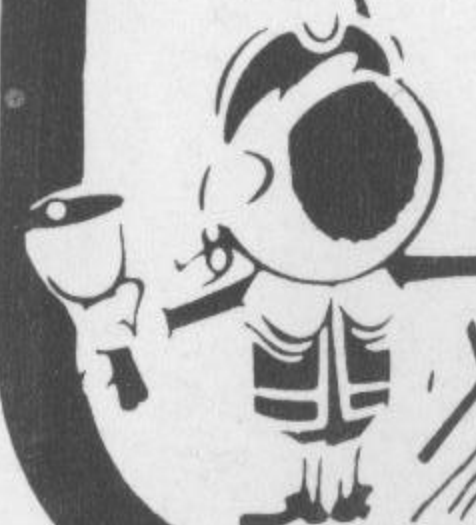
NEW SPUR ALUMINIUM

# Garddor

WHITE PLAS

TEAK TYPE PLAS

# HILLPLAS



SCOTTFIELD SAW MILLS  
ASHTON ROAD, OLDHAM  
Phone: 061 652 7421

## OLDHAM RUGBY LEAGUE FOOTBALL CLUB OFFICIALS The Pavilion, Watersheddings, Oldham Tel: 061-652 5244 & 061-624 4865

**President:** H.V. Ashworth  
**Chairman:** R. Hatton  
**Vice-Chairman:** J. Bowden  
**Treasurer:** K. Broadbent

**Committee:** E. Buckley, J. Hall, P. Lovett, R. Ogden, K. Potter, N. Tench  
**Hon. Club Solicitor:** A.J. Adler  
**Secretary:** Paul Lovett

**Coaching Staff:** Frank Myler (Coach), Peter Smethurst (Ass. Coach),  
Brian Gartland (Colts Coach)

### Professional Playing Staff

Adrian Alexander - Ray Ashton - Brian Caffrey - Barrie Connor - Leslie Cook - Mike Cowley -  
Pasquale D'Adamo - Stephen Dobb - Terry Flanagan - Andrew Goodway - Colin Hawkyard -  
Steve Herbert - Clive Hunter - Paddy Kirwan - Steve Littler - Paul Lowndes - Bob Mordell -  
Geoff Munro - Martin Murphy - David Nicholson - Tony Ogden - Roger O'Mahoney -  
Denis O'Neill - Mike O'Rourke - Gareth Owen - Johnny Paterson - Alan Platt - Gordon Pollard -  
Alan Taylor - Gary Walczak - Joe Warburton - Phil Ward - Mike Worrall

**Hon. Consultant Orthopaedic Surgeon:** Mr. H. Thompson

**Hon. Consultant Surgeon:** Mr. M. Shafiq

**Hon. Consultant Dental Surgeon:** Mr. W.C. Mellor, **Club Doctor:** Dr. D. Walton  
**Physiotherapist:** Mr. A. Bonnelle **Asst. Physiotherapist:** Mr. J. Watkins

**Financial & Admin. Manager:** Mr. John Howard Tel: 061-620 4870

**Commercial Manager:** Franny Ward Tel: 061-624 4870 & 061-620 4835

**Social Club Manager:** Kevin Wilkinson, Tel: 061-624 0386 **Groundsman:** J. Walker  
**Asst. Groundsman:** W. Caine, **Official Time Keeper:** J. Roscoe

### CLUB RECORDS

Record Victory	67-6 against Liverpool City April 59
Record defeat	11-67 by Hull K.R. Sept. 78
Record attendance	28,000 v Huddersfield Feb 24th 1912
Record receipts	£9,100 v Wakefield 24th Feb: 1980
Record transfer fee paid	£18,500 to Hunslet for Mick Parrish Sept. 1980
Record transfer fee received	£11,002: 10s from Workington for Ike Southward Jan 62
Record try scorer	Reg Farrar 49 tries 1921/22 season
Record goal scorer	Bernard Ganley 224 goals 1957/58 season
Record point scorer	Bernard Ganley 28 pts v Liverpool City April 59
First game	October 21 1876 v Stalybridge
Highest number of Points Scored	Bernard Ganley 2881
Most Appearances	Joe Ferguson 685
Most Tries	Pre 1900 Jack Hirst 233 Since 1900 Alan Davies 182

### CLUB HONOURS

Rugby League Championship Play-off winners:	1909-10, 1910-11 and 1956-57
Runners-up:	1906-07, 1907-08, 1908-09, 1921-22 and 1954-55
First Division Champions:	1904-05
Second Division Champions:	1963-64
Rugby League Challenge Cup winners:	1898-99, 1924-25, 1926-27
Runners-up:	1906-07, 1911-12, 1923-24 and 1925-26
Lancashire Cup winners:	1907-08, 1910-11, 1913-14, 1919-20, 1924-25, 1933-24, 1956-57, 1957-58 and 1958-59
Runners-up:	1908-09, 1911-12, 1918-19, 1921-22, 1954-55, 1966-67 and 1968-69
Lancashire Championship winners:	1907-08, 1909-10, 1921-22, 1956-57 and 1957-58
Runners-up:	1908-09, 1910-11, 1911-12, 1919-20, 1923-24 and 1954-55
Lancashire Shield winners:	1975-76 1979-80
Colts Premiership Trophy:	1979-80



## WATERSHEDDINGS SURVEY

THE bookmakers reckon Oldham are 5-1 for the Second Division title — second favourites behind Salford — and we set off the new campaign with a 24-16 win against Hunslet at Watersheddings two weeks ago.

Though the performance was not one of our best, and coach Frank Myler had some words to say about it afterwards, we never really looked like slipping up and in the end we finished with an eight-point winning margin.

Tries were scored by Paddy Kirwan, Phil Ward, Clive Hunter and Dave Nicholson — his first for the club — and Mick Parrish was in good kicking form, being successful with six goals from seven attempts.

There have also been two successes at "A" team level since these programme notes were last published. The reserves beating Workington "A" 43-16 and scored a total of nine tries in the process.

Ashley McEwen led the way with a hat-trick of touchdowns and other tries were scored by Steve Herbert, Les Cook (2), Alan Taylor, Colin Hawkyard and John Walls with Mick Worrall kicking four goals and a trialist half-back landing another four.

The "A" team followed up in mid-week with another home win, this time 24-9 against Blackpool Borough, who played the vastly-experienced Welsh international hooker Don Parry and restricted the amount of ball coming Oldham's way.

Nevertheless, our "A" team overcame the handicap well to run in six tries.

McEwen scored two late on, taking his two-match total to five, and there were also tries for the trialist half-back, Herbert, Bob Mordell and Ian Ogden with Alan Platt (2) and the trialist landing goals.

Our Colts team played its first match of the season against Leeds at Watersheddings and though putting up a plucky show against a much more experienced and bigger set of opponents, they went down 38-17 with Paul Lowndes scoring three tries and Alan Platt landing four goals.

Platt, Lowndes and Stephen Dobb, playing out of position at stand-off, were the only members of our team with much experience of Colts football.

So to Blackpool at Borough Park for our second game in the Second Division — and another win! Though we did not reach our top form, Borough never really threatened us after we had opened up with seven points in the first eight minutes.

In the end we won 16-6 to go joint top of the Second Division alongside the only other two unbeaten teams — Workington and Salford.

Mick Parrish kicked five goals from six shots, to take his tally in the two league games to 11, and tries were scored by Clive Hunter and Mick Worrall.

Congratulations are due for our young skipper Terry Flanagan who followed up his representative honours last season by figuring in the Lancashire squad that opened up the county championship series against Yorkshire at Castleford on Wednesday last.

Last season Terry was vice-captain of the Great Britain under-24 side and he also got into the squad for the last Test against the New Zealanders.

Another pleasing aspect of the Watersheddings scene at present is the way winger Geoff Munro is getting back in the old routine after his bad ankle injury at the end of last season.

Geoff has had two operations on the ankle, including one to "pin" the bone above the ankle. He has spent a lot of time and put in a lot of hard work to get back to match fitness and, as a result of his endeavour he came successfully through his first "A" team test in the home win against Blackpool.

He did not get a lot of the ball but, when he did, he coped more than adequately with the situation and will now be more confident for his next run-out in the gradual build-up to normal.

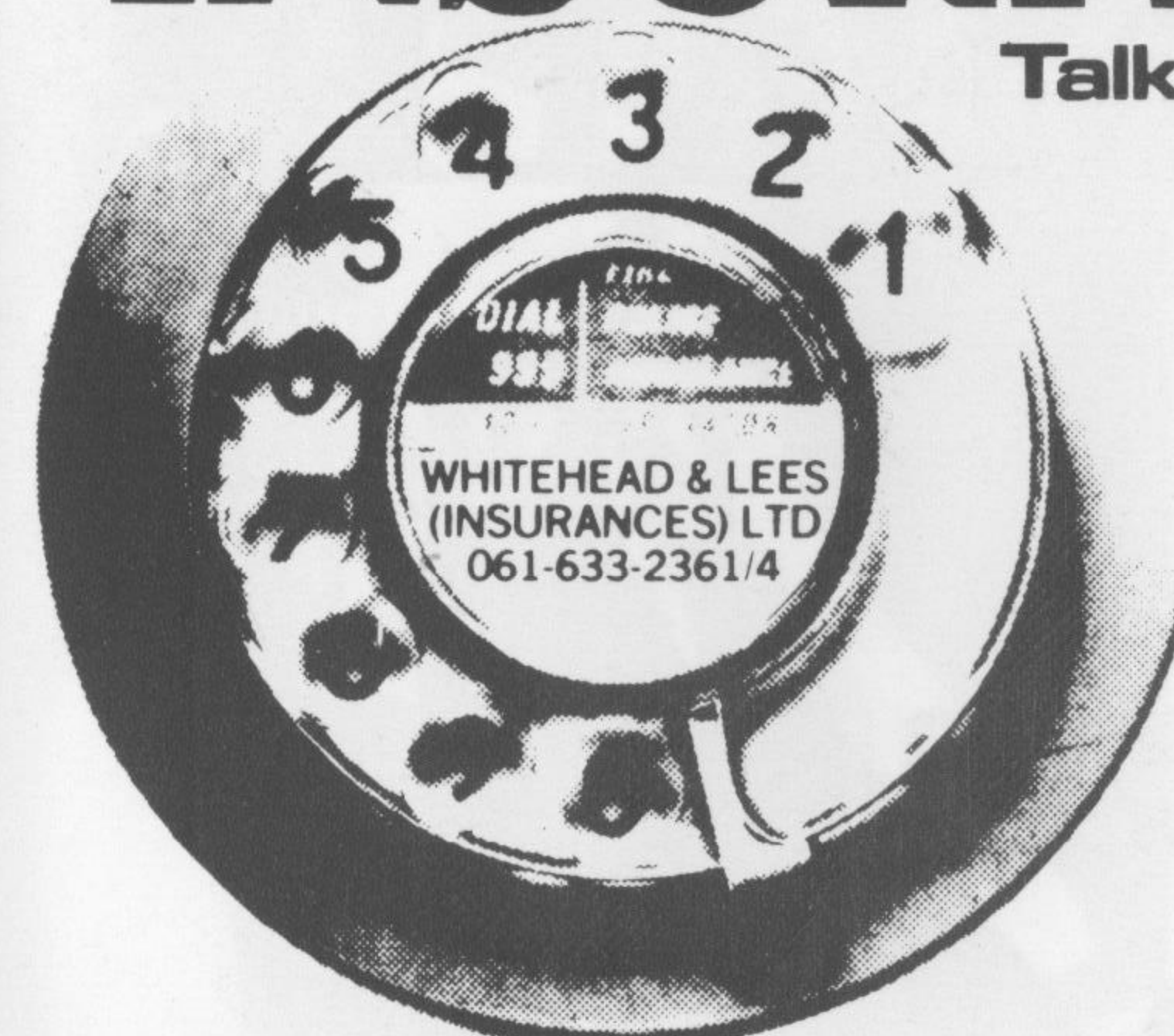
## QUIZ TIME

THE first of our club quiz questions appear below. The first two correct entries will receive two free tickets for our next game. So come on all you budding Masterminds, lets have your answers addressed to the Pavilion, Watersheddings, Oldham.

1. Name the two Oldham players on the current register to have appeared in a Challenge Cup final squad at Wembley.
2. Which Club has won the Challenge Cup most times?
3. How many times have Oldham won the Lancashire Cup?
4. Has Martin Murphy ever won International Honours; if so, for whom and when?
5. Which was the only 2nd Division club to beat Oldham at Watersheddings in their last promotion season 1979/80?

# INSURANCE?

Talk person to person



As Oldham's largest insurance brokers, we offer a full and, most important a personal service for all types of insurance. It's a service we're proud to extend to mortgages, both domestic and industrial. Pop in anytime and you're guaranteed the friendliest of attention. Established over 50 years.

**Whitehead & Lees  
(Insurances) Ltd.**

**B I B A**

The British Insurance Brokers' Association

34, Union Street, Oldham (tel 061-633 2361)  
14, Rossall Road, Cleveleys (tel 0253-855818)



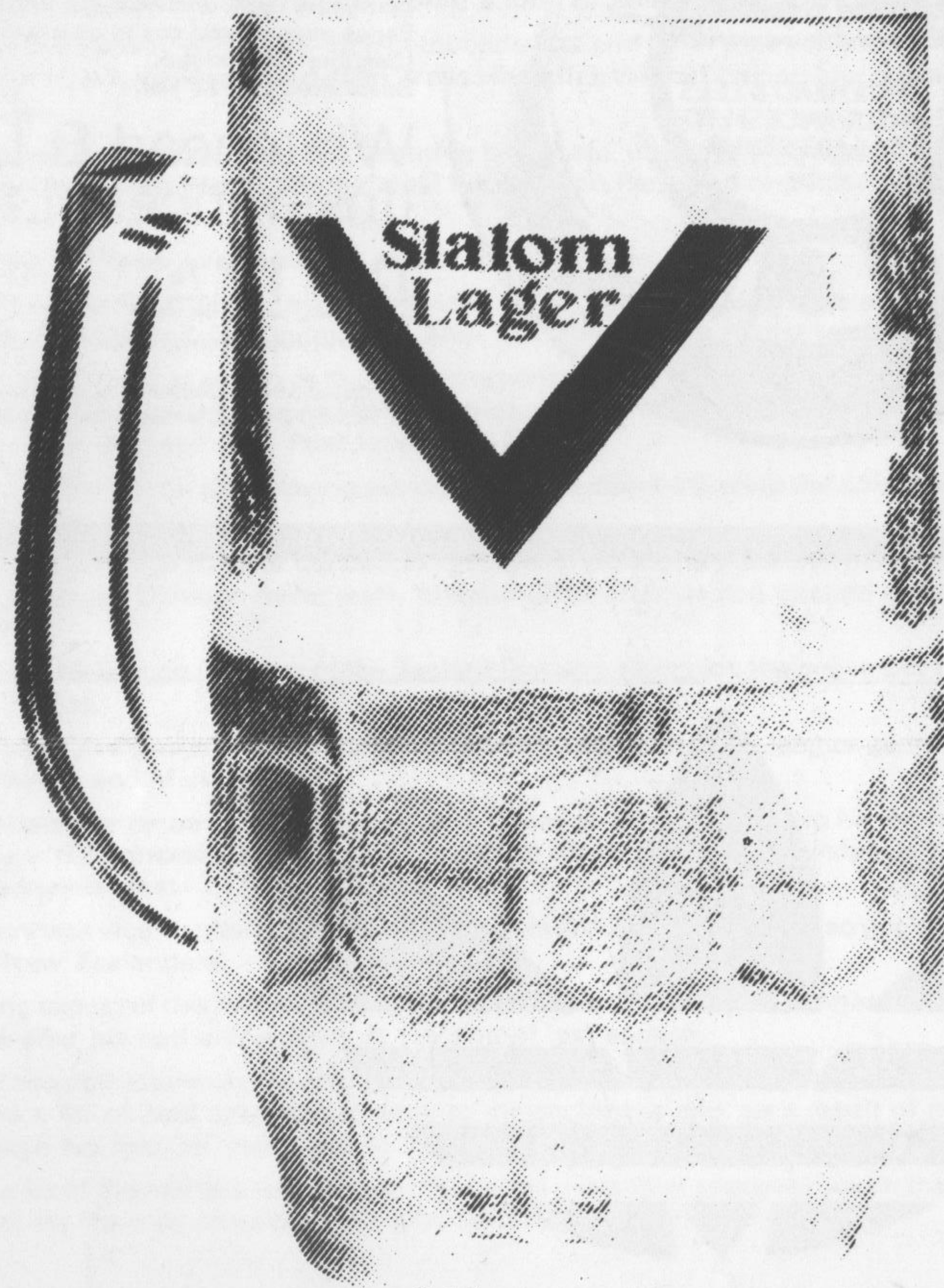
**adidas**®

*The mark of a winner*

**adidas**®  
OFFICIAL SUPPLIERS OF PLAYING  
KIT & FOOTWEAR TO  
OLDHAM RUGBY LEAGUE  
FOOTBALL CLUB.



# END OF THE FIRST HALF

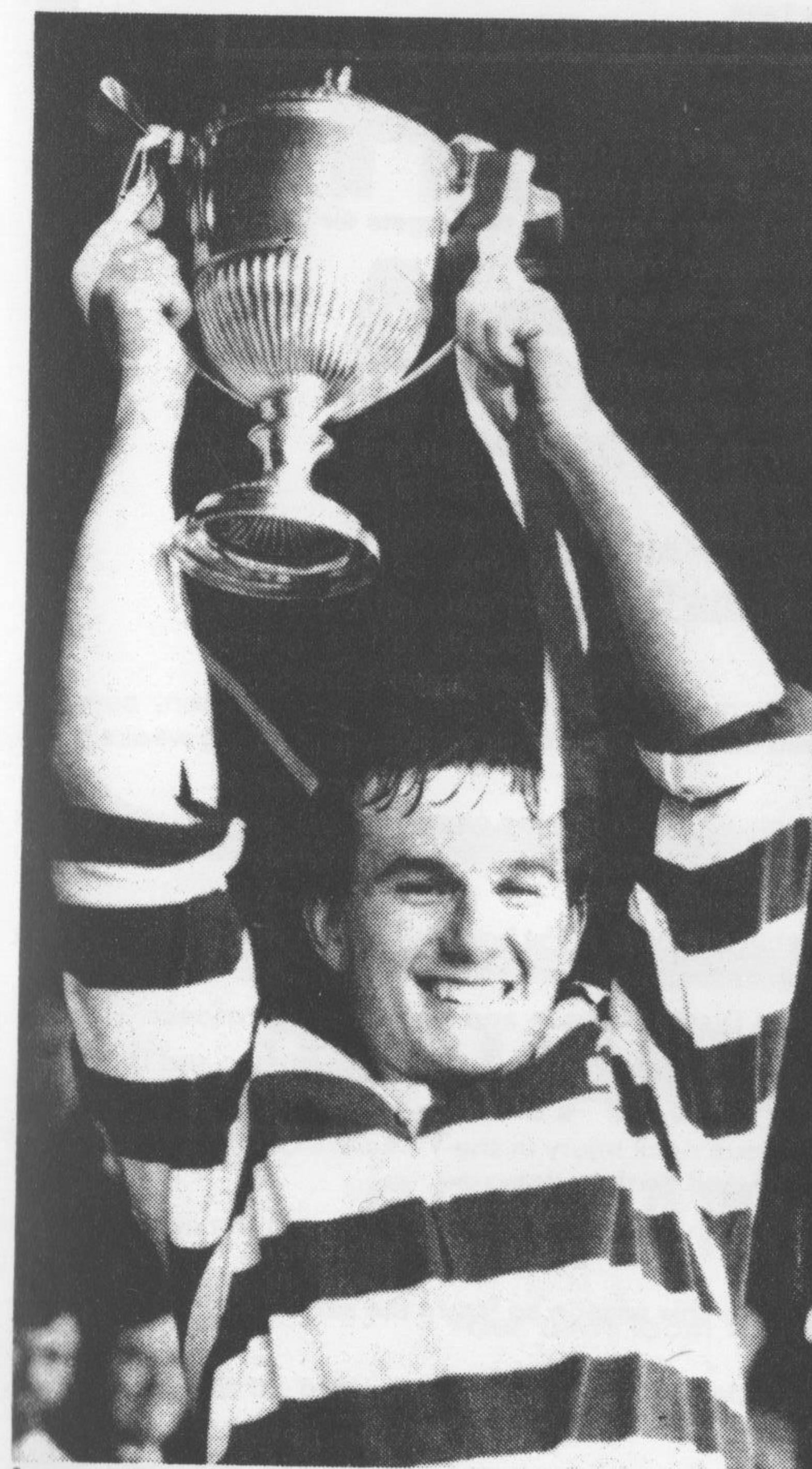


**Slalom  
Lager**

**After a try you'll be converted**

**Matthew Brown** 

## PERSONALITY PROFILE



### TERRY FLANAGAN

**Most difficult opponent:** Wayne Heron (Leeds)

**Most memorable match:** Under-24s for Great Britain against New Zealand at Fulham

**Biggest disappointment:** Being left out of English Schools side when I thought I had been selected for the team

**Best country visited:** France

**Favourite Captain:** Paddy Kirwan

**Miscellaneous likes:** Training, Holidays, after the game when we have won, Slalom Lager

**Miscellaneous dislikes:** Hangers on, Fiery Jack in certain areas

**Favourite TV shows:** Monty Python, Crossroads

**Favourite singer:** Billy Joel

**Favourite actor/actress:** John Cleese, Bo Derek

**Favourite film:** Kentucky Fried Movie

**Favourite comedian:** Bobby Ball

**Favourite L.P.:** "The Stranger" - Billy Joel

**Favourite single:** "Just the way you are" - Billy Joel

**Favourite group:** Sad Cafe

**Favourite food:** Cavia Hot Pot

**Best friend:** Girlfriend - Sue

**Biggest influence on career:** Brother Kevin, father Bill

**Biggest drag in rugby:** Losing

**International debut:** Great Britain v New Zealand, 5th November, 1980

**Personal ambition:** To be successful in life

**Rugby ambition:** Captain Oldham at Wembley and Great Britain v Australia.

**Who I would most like to meet:** Adrian Alexander's hair stylist; and footballer Francis Lee, reason being he has been very successful on and off the field

**Age:** 20 (27/11/60)

**Born:** Oldham

**Height:** 5ft 11½ins

**Weight:** 13 stones 7lbs.

**Car:** Hillman Avenger

**School:** St. Anselm's R.C.

**College/University:** U.M.I.S.T. -

Electrical Engineering

**Previous Clubs:** Saddleworth Rangers

**Favourite Players:** Arthur Beetson, Rocky Turner

**Favourite other teams:** Saddleworth Rangers, Widnes



## TODAY'S VISITORS

### DEWSBURY R.L.F.C.

Founded in 1898. Joined the Northern Union in 1898.

Ground: Crown Flatt.

Colours: Red, amber and black hooped jerseys, white shorts.

R.L. Championship Winners 1972-73.

Beaten Finalists 1946-47.

Division Two Champions 1904-05.

R.L. Cup Winners 1911-12, 1942-43.

Beaten Finalists 1928-29 (Dewsbury and Wigan were the first teams to compete for the trophy when the Final was held at Wembley.

Yorkshire League Winners 1946-47.

Yorkshire Cup Winners 1925-26, 1927-28, 1942-43.

Beaten Finalists 1918-19, 1921-22, 1940-41, 1972-73.

BBC-2 Floodlit Trophy beaten Finalists 1975-76.

War League Championship Winners 1915-16, 1916-17, 1941-42.

#### CLUB RECORDS:

Attendance: 26,584 v Halifax (Yorkshire Cup) 30th October, 1920.

Tries: 40 by D. Thomas, 1906-07.

Goals: 145 by N. Stephenson 1972-73.

Points: 368 by N. Stephenson, 1972-73.

Record Receipts: £6,681 v St. Helens, 3rd Round R.L. Cup, 13th March, 1977.

International Tourists: F. Gallagher, H. Street, R. Pollard, A. Bates, J. Bates.

World Cup 1972: M. Stephenson.

DEWSBURY, who are keen to improve on their mediocre Second Division record last season, come to Watersheddings today with a young side which has already been badly hit by injuries in the opening weeks of the campaign.

Two of the Crown Flatt club's most experienced players were sold in the close season. John Wolford, that talented scrum-half, stand-off or loose-forward, moved to Hunslet and centre Malcolm Agar was transferred to Halifax.

That was an awful lot of experience for a club like Dewsbury to lose but the board are banking heavily on a youth policy and they have snapped up two promising players in Graham Mook and Chris Squires.

Mook is a second-row forward from the Wakefield and District League and looks a fine prospect.

Squires is a local fullback, aged 20. He is a 6ft 2in goalkicker who tips the scales at 14 stones and Dewsbury hold out very high hopes for him in the professional game.

Another youngster, winger Mick Wilson, suffered a serious neck injury in the Yorkshire Cup-tie at Wakefield when he fell awkwardly in a tackle and damaged his fifth and sixth vertebrae.

He is still in hospital but we are told he is making satisfactory progress and has every intention of playing the game again.

Sadly, his injury was typical of the tale of woe at Dewsbury this season so far. In the same match club skipper Jack Austin, who needs no introduction here, was sent off.

He was apparently unfortunate to get his marching orders, having first been tackled off the ball, but he ultimately received a three-match suspension which will put him out of the game today.

Few centres in the game are more determined than big Jack and Dewsbury clearly missed him badly on the opening day of the Second Division campaign when they suffered a very heavy defeat at Workington.

As if the club's injury list and the Austin suspension was not sufficient to cope with, player-coach Bernard Watson damaged his ribs badly against the Cumbrians and, at the time of writing, was considered to be doubtful for the trip to Watersheddings.

One of the Dewsbury success stories at Derwent Park was the form of big prop Keith Mason, who had a cracking game and will doubtless be out to emulate his performance against Oldham today.

Last season Dewsbury finished fourth off the bottom in the Second Division with 11 wins from their 28 matches. They also had a draw for 23 points — 19 more than bottom club Huyton, 14 more than next-to-bottom Blackpool and 13 more than Doncaster.

Though finishing so low down they were only four points behind Hunslet, who finished half way up the division.

Dewsbury and Oldham did not meet last season but the season before that — Oldham's promotion year — the sides met three times and Oldham won them all.

Dewsbury lost 25-6 at Watersheddings in the league, 17-14 at Crown Flatt in the league and 24-2, again at Crown Flatt, in the first round of the Challenge Cup.

# Harvey Ashworth

(manchester Ltd.)

(PRESIDENT OLDHAM RUGBY LEAGUE Football Club)  
The Abattoir, River Park Road, Manchester 10  
Tel: 061-223 2097

## OLDHAM BREWERY COMPANY LIMITED

Your own local independent Brewery

Brewers of Finest Mild and Bitter Ales

Also Bottled Beers

Available in the Bars

**ALBION BREWERY, COLDHURST ST., OLDHAM.**

Telephone: 061-624 8305/6



# TENCH (sports) LIMITED

☐ S4 ARNDALE CENTRE  
 MIDDLETON  
 MANCHESTER  
 Telephone 061-643 7515

☐ 16 THE PARADE  
 SWINTON  
 MANCHESTER  
 Telephone 061-794 0995

## BLACKPOOL BEATEN BY A MILE?



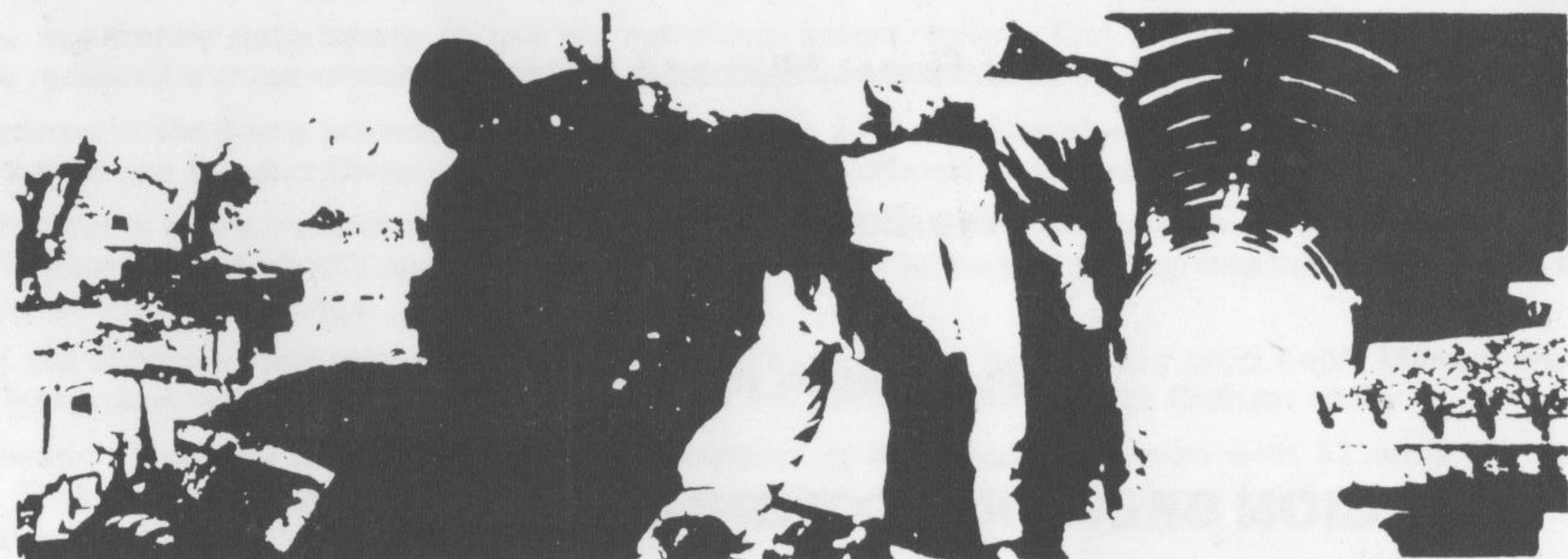
ABOVE: Dave Nicholson, our recent signing from Swinton, goes down in a tackle at Borough Park last Sunday. BELOW: Paddy Kirwan comes to a full stop in a tackly by John Risman in our 16-6 win at Blackpool on Sunday.

*Pictures by courtesy of Oldham Evening Chronicle*



# QUEGHAN

## pacemakers in civil engineering



Queghan House, off Shaw Road, Oldham, Lancs.  
 Telephone 061-620 2115/6/7



# DEVELOPMENT ASSOCIATION NEWS

## with Franny Ward at Watersheddings

MANY thanks to the Supporters' Club for inviting me to help judge the Fancy Dress Pram Race on Bank Holiday Monday and congratulations to all of the various prizewinners.

I hope that you like our new match day programme. I can tell you that a great deal of time and effort has gone into what we all think is a top flight, up to the minute information magazine and we are still not satisfied with it in its present form. We hope to include further interesting articles and hopefully a new regular feature will be a cartoon caption game in each edition. If anybody has any other ideas they think we should incorporate then please don't hesitate to contact us at the Development Offices.

### Lottery News

We have pulled off yet another scoop. For our new lottery ticket on Saturday, 26th September, 1981, we are having the first draw for £3,000 in the market area of the town centre, our draw is the first in the Oldham area under the new legislation, and because of this we have booked Mike Sweeney of "Did Yer" and "Dead, Dead Good" fame with Piccadilly Radio. Mike will be at the Market around 12 noon so turn up in hundreds to support our lottery.

### Lottery Agents Required

If you can sell around 25 tickets per week you can become one of our fast growing band of agents. Agents receive a very good rate of commission on sales and winners of £10 and over, so come on, it does not take much to sell 25 tickets a week, grab a phone, dial 620-4835 and we will start you off today — easy isn't it.

### Recent Lottery Winners

£100 Mrs. Day — Oldham.  
 £50 Mr. D. Hall — Oldham.  
 £10 H. Bromwich, E. Beswick, B. Cleerie, M. L. Connolly, A. C. Karaboy, W. Molyneax, J. Shaw, D. Wardle, M. McIntosh, V. Radcliffe, J. P. Docherty, Mrs. D. Holt.

And many, many more smaller prizes.

DON'T FORGET: If you have an entry in the £3,000 Jackpot Draw come up to the promotion draw in the Market Area of the town centre.

Commercial Manager Franny Ward presents lucky £100 cheque to Mrs. Day outside the Development Offices in Clegg Street, Oldham



### Agents' Night

There will be a Lottery Agents Buffet Dance in the Social Club early in December. The evening will consist of a filmed dog race meeting, cabaret, disco, buffet and a free agent raffle. The evening will be by invitation only and will be completely free to agents. Anyone who isn't an agent already may become one today and qualify for the evening.

### Matchday Lottery Ticket Sellers

We require a few matchday lottery ticket sellers. If you are over 16, sales minded, with a pleasant personality, attend most of the home First Team games, then please contact me at the Development Offices.

### Sponsorship Required.

We desperately need people to sponsor matches, programmes, balls and perhaps even the team. Any local/national company, supporter or any person interested please contact me at the Development Office.

### STOP PRESS

Plans are being made to hold a balloon race at our £3,000 draw on Saturday, September 26th. We are hoping to organise the race whereby the winner, second and third place will receive cash prizes. See local press for further details.

### Early Club History Required

Local historian Tom Webb, who writes in our programme, requires details of Oldham R.L.F.C. matches played in the following seasons, 1900/1901, 1901/1902.

Tom, who is regarded as an expert in the world of Rugby League for history details is missing information of ten games around this time to complete his records. He would be most grateful to anyone who can help him with the necessary information. If you are able to oblige him please contact the Development Offices.

PROMOTER R. HATTON  
OLDHAM IMPROVEMENT  
& GROUND FUND THE PAVILLION  
WATERSHEDDINGS, OLDHAM

# BIG 3

PROMOTER K. WILKINSON  
THE PAVILLION, WATERSHEDDINGS, OLDHAM  
THE COMBINED SPORTING  
CLUBS ASSOCIATION OF O.R.L.F.C.

Strike it rich with the  
**O.R.L.F.C Lightning**  
Double Chance Ticket

**£3,000**

JACKPOT DRAW

**£2,000**

INSTANTLY

**£1,000**

INSTANTLY

**PLUS** TENS OF THOUSANDS OF POUNDS IN OTHER PRIZES

25p

**AGENTS REQUIRED best commission and incentives paid by any lottery.**  
**Over £35,000 prize money paid to agents every lottery.**  
**PHONE NOW — 061-620 4870**

To: THE LOTTERY OFFICE, Clegg Street, Oldham

I would like to become an Agent for the Big 3 Lottery.  
 I am over 16 years old.

Name..... Tel. No.....

Address.....

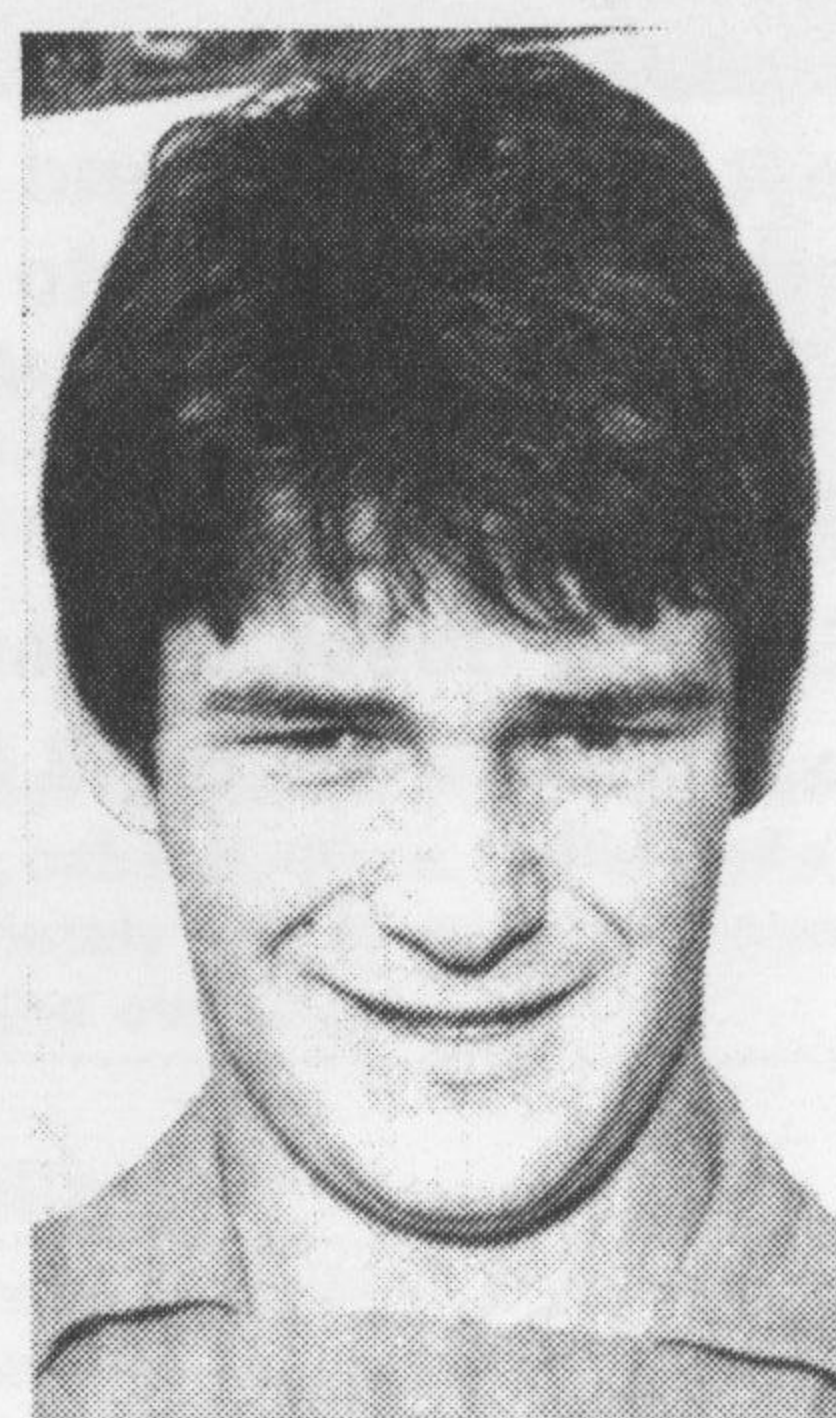
.....



# **OLDHAM R.L.F.C.**

BACK ROW (left to right): Les Cook, Billy Harris, Steve Herbert, Adrian Alexander, Mick Parrish, Bob Mordell, Brian Caffrey, David Nicholson, Gareth Owen, Alan Platt.

FRONT ROW (left to right): Roger O'Mahoney, Paddy Kirwan, Phil Ward, Terry Flanagan, Ray Ashton, Clive Hunter, Martin Murphy, Alan Taylor. Club mascot, Michael Robinson.



PICTURED (left to right): Andrew Goodway; Mick Worrall; Gordon Pollard.



## TRANSFER FEE MADNESS

**Brian Batty**  
Daily Mail

AT a time when Soccer is attempting to restore some sanity to the transfer market the inflated fees remain in Rugby League.

Unless it is hellbent on destroying itself then Soccer will have no alternative in the long term but to bring the transfer scene back to earth.

It is certainly taking quite a time for Soccer to come to its senses so let us hope that Rugby League clubs realise there can be only one outcome for the majority of clubs in the face of soaring transfer fees.

I know the two sports differ in one sense that there is a great shortage of available talent in Rugby League.

And, with the entry of Fulham, Carlisle and Cardiff City it has put a completely false complexion on the transfer market.

Although gates in Rugby League have shown a gradual overall increase in recent seasons few clubs have found themselves with much capital to spare.

There has been a pretty formidable rise in players bonuses and the general expenses of running a club.

Sponsorship has been a help with the clubs having something more to celebrate than silverware as a reward for winning honours.

But at the end of the day even the most successful of clubs are squeezing the financial sponge to exist and I do not see the situation changing much in the near future.

Yet the League deserve credit for raising sponsorship to around the £300,000 mark with the latest entry of Dominion Insurance to back the Great Britain side.

The cash will not create better players of course – and that is our main problem at the moment – but it will help prepare for the next Test series against Australia.

Perhaps the prospect of facing the Aussies in the Test arena in a Test will surely prove a spur to our players and during the next 12 months the right breed of player will rise to the surface.

This season is going to be critical in this respect and it would be wrong to get carried away with the idea that financial backing for training and preparation is going to solve our problems.

I am sure our officials are aware of this fact and appreciate the hard work and effort needed as they aim to put our game where it belongs – back on top.

## A SHORT HISTORY OF THE DEWSBURY CLUB

by Tom Webb

DEWSBURY celebrated the club centenary a few seasons ago but there had been a break in the club's activities just before the turn of the century.

In October 1875 the club was founded at a meeting held in the Little Saddle Inn when 50 members had agreed to pay a sixpenny entrance fee and a weekly subscription of threepence. The licensee William Blackburn loaned £15 without security and then paid half a guinea to become the club's first honorary member.

In December 1875 the first game was played in a field off Sugar Lane, just opposite Crown Flatt and the first gate was one shilling and sixpence halfpenny. The club flourished and repaid the £15 loan within a month. In due course a move was made to the present ground.

In 1877-78 season, on March 23rd, Oldham crossed the Pennines to play Dewsbury Athletic as the club was named, and this was believed to be the first time that a Lancashire club fulfilled a fixture in Yorkshire. However, Oldham played Wakefield Trinity in an earlier game in Yorkshire.

In that season the clubs met in Oldham, probably at the Clarksfield ground, when there was a draw "in favour of Oldham" to quote the newspaper report. Both clubs had scored a goal and a try but Oldham had two minor points from touch downs. This was a ball being made dead by the defending side. In the fixture in Yorkshire, Oldham won by two goals, three tries, two touch downs and one touch-in-goal to three touch downs and one touch-in-goal. F. Wild was over the line but there was a melee and the man in authority awarded Oldham a try. Each side had their own umpire and a referee made decisions when the umpires disagreed. Fred Wild was the Oldham club secretary.

When the Northern Union was instituted in 1895 Dewsbury were among the original clubs but decided to stay with the Rugby Union.

The result of staying in the Rugby Union caused Dewsbury to lose their best fixtures and after three or four years the club folded up. In no time at all a new start was made so in another 16 or 17 years the club can have another centenary celebration.

The legendary Richard Evison Lockwood, "Dickie Lockwood", was such a wonderful player that the club used to stick bills on walls and hoardings saying that "Dickie Lockwood will definitely play".

In 1913 a record fee was paid for the services of Lance Todd, which caused great delight in Shoddy Town but caused meetings of protest in Wigan. The fee was £400 but shortly afterwards Hull paid Dewsbury £405 for Tommy Milner.

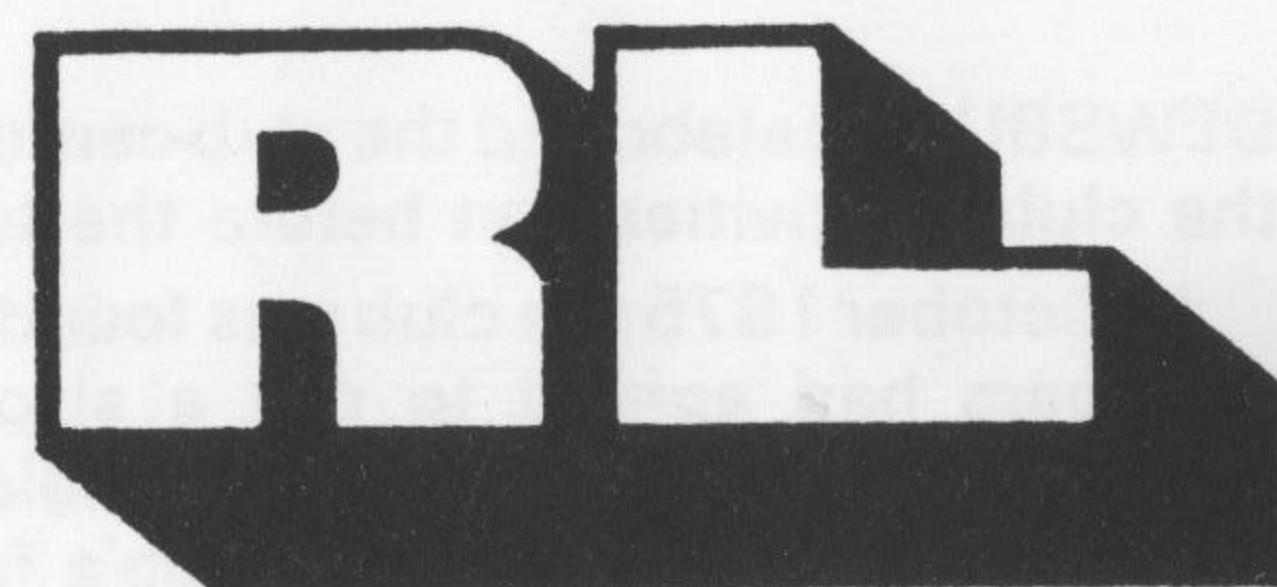
When Challenge Cup finals were taken to Wembley for the first time, Wigan and Dewsbury were the first contestants. Dewsbury lost but they had previously won the cup by beating Oldham in the 1911-12 final.

John Jackett of Cornwall joined Dewsbury as a full back. G.W. Smith then the proprietor of the Empire Theatre in that time named one of his racehorses after the player. A contemporary of his, Joe Hammill, played for both Dewsbury and Hull before settling in New Zealand. There he was a great worker for the Rugby League game and in due course his son Trevor became secretary of the New Zealand Rugby Football League.

One secretary of Dewsbury was Eddie Waring. The present secretary is Bernard Shoeman, a great enthusiast and a former grade one referee.



**"OPEN RUGBY"  
SEPTEMBER ISSUE**



OPEN RUGBY, the monthly Rugby League magazine, starts its new season with a bumper September issue. More pages, more colour, bringing Rugby League fans superb value for only 50 pence.

The September issue includes interviews with new coaches Bill Ashurst (Wakefield T.) and Allan Agar (Carlisle). An exclusive report (with pictures) of the revival of Rugby League in Italy.

A special full-colour feature on Rugby League in Whitehaven, plus features on activities at Bramley, Blackpool and Fulham. Details of the new clubs, Carlisle and Cardiff City, with a full-colour picture of Carlisle in action, plus a round-up of every club's major close-season signings and transfers. News of the French tour "down under", and the latest issue of the controversial WORLD RATINGS. And from Papua-New Guinea one of the most fantastic R.L. pictures ever published, in full-colour.

All this plus "BARLA MONTH", a free Amateur Rugby League supplement with every issue.

PLUS .... top prizes to be won every month in Rugby League competitions, and the announcement of an important new award scheme for Rugby League players.

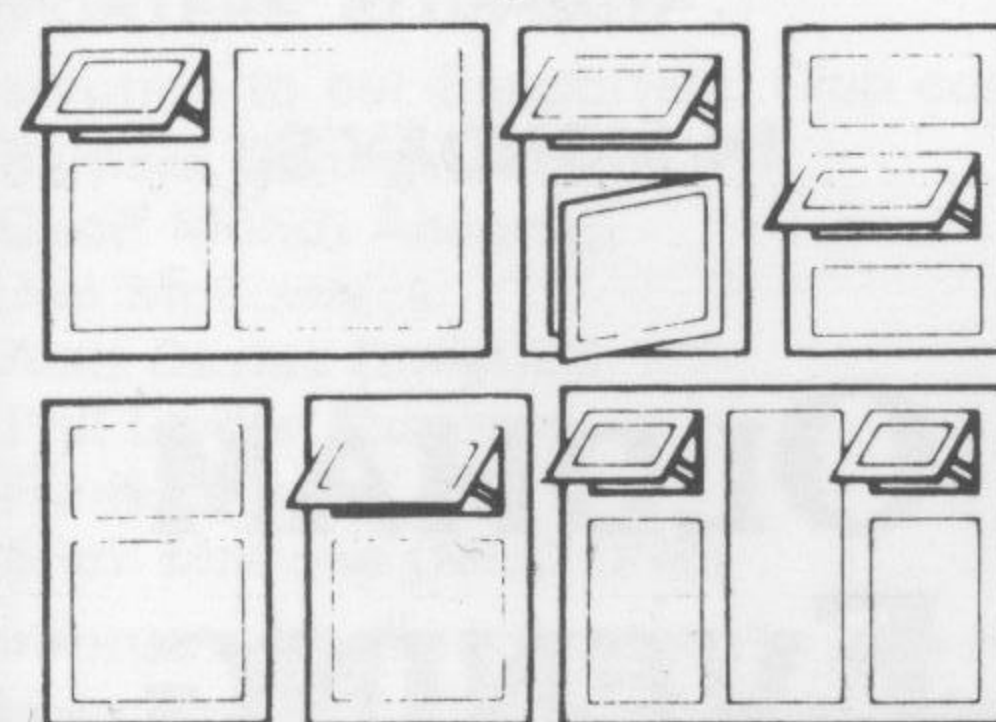
If you're a Rugby League fan, DON'T MISS "OPEN RUGBY" every month. Ask your newsagent to order it for you. To obtain by post, send 75 pence (payable to OPEN RUGBY) to: OPEN RUGBY, 415 Kirkstall Road, Leeds 4. Better still, book an annual subscription (£7.50) and be sure of your copy.

# The best home conversion in years!



Replace those rotten old draughty windows and doors with new 'thermal white' aluminium double glazed windows. New 'thermal white' windows and doors transform your home overnight and will be a lasting investment for

years to come. They're rot **FREE**, rust **FREE** and virtually **maintenance FREE**—and that means **no painting**.



Check out the North's leading replacement window specialist now and sample our superb range of styles and finishes. You won't find a better all round deal—and that's a fact.

**FOR INFORMATION TODAY RING  
OUR ACTION LINE  
061-205 8741  
VISIT OUR SHOWROOM  
at: Monsall Mill, Monsall Rd.,  
Newton Heath.**

Open weekdays 9am 5pm  
Week ends 10am 2pm



## WINDOWCARE

I would like to know more about:

- ☐ White Thermal Aluminium Windows ☐ 3 month deferred payment plan  
☐ Mahogany Windows ☐ Free Patio Door

(Tick boxes required)

NAME \_\_\_\_\_

ADDRESS \_\_\_\_\_

Tel No: \_\_\_\_\_

NO  
STAMP  
NEEDED

Post to Windowcare Ltd., FREEPOST, Monsall Mill, Manchester M10 8NR. Tel: 061-205 9416/8741



**FOR COMPETITIVE  
ADVERTISING**

contact  
**FRANNY WARD**  
620 4870

**James Schofield  
& Son**  
(Transport) Limited



- \* All Classes of Haulage
- \* Any Distance Undertaken
- \* Expert Packing
- \* Ample Storage Facilities Available

**PRIMROSE BANK,**  
Oldham  
Tel. 061 624 2968

**JOE GALLAGHER**

PAINTER and DECORATOR

26 Alva Road Telephone  
Watersheddings 061-652 0208  
Oldham

**The Moorcock**

OGDEN, MILNROW, ROCHDALE, LANCs. OL16 3TJ  
Telephone Saddloworth 2859

A welcome awaits you from the  
owners **Don Heap and  
Jim Thompson**  
Traditional Luncheon served  
every Sunday

YOU'LL FIND ALL THE  
OLDHAM LOCAL SPORT

IN DEPTH  
IN MONDAY'S

**OLDHAM  
EVENING  
CHRONICLE**

**GEORGE & SHEILA**

Welcome you to

**THE BULLS HEAD**

Luncheons, Bar Snacks,  
Morning drive breakfasts

**OGDEN, NEWHEY,  
ROCHDALE.**

**Shaw 847992**

**SUPPORTERS' CLUB NEWS**

MANY people wish to know who are the Supporters' Club Committee. So starting with the launch of our brand new match day programme, we have pleasure in publishing our Committee list. Donald Pilkington, Chairman; Miss A. Collinge, Vice-chairman; Mrs. A. Dolman, Treasurer; and Mr. T. Heywood, Secretary. Committee: A. Collinge, Mrs. J. Pilkington, Mrs. L. Wolstencroft, Mrs. M. Heywood, Mr. C. Clark, Mrs. E. Crowther, Mr. D. Dolman, Mrs. A. Dolman, Mr. S. Chadderton and Mrs. L. Chadderton.

So now there is no need for anybody not to be a member of Oldham R.L.F.C. Supporters' Club. Anyone, and that should read **EVERYONE** wishing to be a member please contact any of the committee at today's game at one of the canteens. Membership is £1 which includes a fabulous Supporters' Club diary.

**DANCE AND TUG-OF-WAR COMPETITION**

We are hoping to enter a tug-of-war team in the above competition which is being held at the Cat's Whiskers, Oldham. Anyone interested in becoming a member of the team please contact the committee.

**RUGBY LEAGUE SUPPORTERS' COMPETITION**

We are holding one of the heats of the "Mr. and Mrs. Rugby League" Competition. This is to be held in the Social Club on November 12th, 1981, at 8 p.m. the first prize is a holiday for two in France. There are two sets of questions, the first set of questions is on our own club, the second set of questions are on general Rugby League. So we need four couples, married or engaged to enter. Please contact the committee with your names. More details will follow in the near future.

**SOUVENIR SHOP**

We have a brand new souvenir shop just at the side of the Hutchins Stand. We have for sale old and new matchday programmes, red and white rugby shirts in various sizes, red and white woollen scarves (£1.75), bob hats (£1.25), cult car stickers (45p), metal lapel badges (65p), blazer badges (£7.50), and just arrived, red O.R.L.F.C. sweaters prices £10 in sizes 34, 36, 38, 40. Supporters ties will be available in the very near future.

**SUPPORTERS' CLUB QUIZ**

The solution to our Supporters' Club competition number one is as follows:-

- |                            |                                   |
|----------------------------|-----------------------------------|
| 1. Bernard Ganley GA(NLE)Y | 8. Ken Wilson Anagram             |
| 2. Geoff Munro Anagram     | 9. Don Close (Huddersfield)       |
| 3. Jim McCormick           | 10. Don Vines BEN (NEVIS) Anagram |
| 4. Alan Davies D(AVI)ES    | 11. Sid Little                    |
| 5. Phil Larder Anagram     | 12. Charlie Winslade Anagram      |
| 6. Frank Stirrup           | 13. Derek Turner.                 |
| 7. Mick McCone (MCC ONE)   |                                   |

For those who did not catch the idea of the competition here are the details once more. A simple competition has been devised to test your knowledge of rugby players past and present. Altogether one hundred names will appear, but they have been broken down into sections which will be published in future match programmes. The first correct entry drawn will receive free admittance to the next home game. All entries must be in by Monday, September 21st, please send your entries to the Social Club.

**SECTION TWO**

Just like section one but with a St. Helens team with three guest forwards all Yorkshire based.

- |  |  |
|--|--|
| 1. This saint was not found in the bullrushes. | 8. Before the man from Glasgow.        |
| 2. Highways on a Greek island?                 | 9. Scottish river will find the cloth. |
| 3. On the putting surface before everyone.     | 10. Rugby League in the tail.          |
| 4. Sounds like a big centre.                   | 11. Lady's man abode - colloquially.   |
| 5. Match sponsor by Volvo - Helen V Ann.       | 12. A couple of ministers nick?        |
| 6. Church leader at St. Helen's.               | 13. Saint Karl IV in USA.              |
| 7. Hot potato round the scrum.                 |  |

**DETAILS OF HUDDERSFIELD AWAY MATCH**

The ground is called Fartown. Railway Station: Huddersfield. Bus routes from St. George's Square in the town centre, bus Nos. 360 and 361. By car take the Bradford road from Huddersfield town centre. The ground is approx. 2 miles from the town centre. Facilities: Refreshment Bars around the ground. Members' Bar, Players' Bar, Supporters' Club, car parking within the complex.

PLEASE NOTE: Will supporters wishing to use the Supporters' Club Bar please take their own Supporters' Club Membership proof with them.

**COACHES TO HUDDERSFIELD GAME.**

Coach will leave at 2.15 p.m. from the Social Club. Booking can be made in the canteens round the ground and also at the Social Club, Monday, Tuesday and Wednesday nights. Prices - members £1.60, junior members £1, non-members £1.80, junior non-members £1.20.



## MUD, MUD, GLORIOUS MUD

by Alan Burke

Public Relations Officer, Oldham Amateur Rugby League

SOME of the best weather of the year heralded the opening of the 1981-82 Pennine League season last Saturday, giving both players and spectators an opportunity to sample how the 13-a-side code would fare if its season was switched to the summer months. Although moves have regularly been made to alter the game from its winter sport status, those who have suggested the idea have almost certainly never themselves attempted to run about for 80 minutes in such conditions.

Warmer temperatures may well attract more spectators to the game, but those who are providing the entertainment are naturally unable to constantly reproduce their skills in the excessive heat, thus causing the general standard of play to be lowered. As if to highlight this fact, one only has to look at the results of last week's matches on the opening day of the new Pennine League season. Twenty-three fixtures took place throughout the area, all of them being played in extremely high temperatures, and with only one match registering a total of less than twenty-five points being scored. Although followers of the game are naturally attracted in the hope of seeing plenty of scores being made, those same supporters would not doubt soon become dissatisfied if that situation happened every week as a result of half-hearted tackling by defences affected by the heat.

At the end of the current season the Great Britain amateur International team will no doubt be receiving another taste of summer rugby when they go on a tour to Australia, New Zealand and Papua New Guinea. For the open-age side it will be their second tour to the southern hemisphere, while 12 months later, in 1983, it will be the turn of the BARLA Under-19s national side to make a similar journey. Naturally, Oldham Amateur League officials are hoping that the town will be represented on both tours, especially as Oldham has recently become one of the boom areas for the amateur game, and with the local youth team having won last season's BARLA Inter-League Shield, while the senior side were runners-up to Leeds in their event.

BARLA have announced that players selected for any of the forthcoming tours will only be allowed to travel if they are able to gain sponsorship for themselves, with a figure of about £500 having been quoted. This is to cover a player's expenses for the tour, including travel and accommodation, and any player unable to meet such costs will immediately be withdrawn from the International squad. Although not fully in agreement with the idea, the Oldham League have already made plans to protect the interests of any local player who might be selected for either the open-age or youth tour.

Oldham League officials are to set up a fund from which the proceeds will go to providing the sponsorship required by any local player selected for the tours. Following the announcement of the touring squads, each player and his amateur club will only have a matter of weeks in which to obtain the finances required, thus possibly giving more wealthier clubs more of a chance to be represented on the tour. The Oldham League's idea, therefore, is to ensure that whichever local players might be selected, he will not miss out on the most important event of his career. Various events are to be organised by the League to help boost the fund, while it is hoped that local clubs will provide their own contributions, and that Oldham-based firms will make donations to prevent any local player from having to forfeit his ambition. Should no Oldham players be selected for any of the planned tours, the amount raised will not be used for any other purpose, but will be kept for whenever a local player does gain a place on an International tour in future years.

**FOR ALL THE LOCAL AMATEUR RUGBY LEAGUE NEWS:  
BBC RADIO MANCHESTER (206 medium wave, 95.1 VHF)**

BARLA REPORTS — every Friday 6.15 p.m. - 6.30 p.m. RUGBY LEAGUE SPECIAL — every Sunday 3.30 p.m. - 5.15 p.m. RUGBY LEAGUE ROUND-UP — every Sunday 6.15 p.m. - 7 p.m.

## North West Decoiling Ltd.

Steel Stockholders  
Decoilers & Shearers

Tel:  
**0925 573551/2**

Telex:  
**627135**

TRAVEL AS THE TEAM  
DOES



by  
**G. Barlow &  
Sons Ltd.**

**19 UNION STREET WEST -  
OLDHAM Tel: 624 4301**

## Reacro Rubber Co. Ltd.

MONA MILL  
FIELDS NEW ROAD  
CHADDERTON

SUPPLIERS OF  
UNVULCANISED  
RUBBER COMPOUNDS

Tel: 061-652 1326

## SERVICE MOULDINGS

**PRECISION  
INJECTION  
MOULDERS**

HARTSHEAD STREET,  
LEES, OLDHAM  
Telephone 061-652 0441





24

25



## PLAYERS — PEN PICTURES

### Full Back

**DON RICHARDSON** — First senior appearance 20th March, 1977 — from Hunslet Juniors — now more than 100 First Team appearances. Excellent in both attack and defence. In early 20s.

### Wing/ Stand-off Half Winger

**SHAUN DUNFORD** — former apprentice 'Soccer professional at Chelsea. Signed from local Woolpack A.R.L. Club January 1980. Goalkicker, 23 years of age.

**ERNIE LOWE** — signed from Hemsworth A.R.L. Club, South Yorks, 1978 — was on A.R.L. tour of Papua/New Guinea in 1978. In early 20's.

### Centre

**JACK AUSTIN** — now something of a veteran — former Bramley, Bradford Northern — very powerful.

**BOBBY COLLINS** — 22 years — signed December 1980 from Dewsbury Celtic A.R.L. Club.

**JOHN HUGHES** — experienced centre/stand-off half. Formerly Bramley, Rochdale, York and Wakefield.

### Half Backs

**BERNARD WATSON** stand-off half/centre — also coach/team manager—very experienced former Leeds, Bradford Northern, Hull K.R. — Dewsbury man, product of local A.R.L.

**STEVE LEE** — scrum half, very experienced — formerly with old Hunslet Club. Joined Dewsbury 1970, testimonial last season.

**IAN DUNFORD** — scrum half, signed 1979 from Woolpack A.R.L., brother of Shaun.

**GARRY JENNINGS** — former Dewsbury Colts — plays in both half back positions — kicks goals.

### Forwards

**DAVID BRIGGS** — experienced prop forward — Dewsbury man — second time at Dewsbury after spells at Bramley and Wakefield.

**KEITH MASON** — prop forward, signed 1979 from Dewsbury Moor A.R.L. Club, in early 20's.

**GEOFF CATLING** — hooker, signed from Gate Inn A.R.L. 1979. Toured Papua/New Guinea as amateur.

**ARNIE LONG** — experienced prop or second row. Dewsbury man, was at Huddersfield, Bradford Northern and Hunslet before Dewsbury.

**ALAN CRAVEN** — second row, signed from Stanningley A.R.L. 1974.

**DAVID WOOD** — second row, signed from Dewsbury Celtic several years ago, good tackler.

**BILL PICKUP** — Huddersfield man, formerly Huddersfield and Warrington centre, now converted to loose forward, very experienced.

## HAIR DESIGN

# MARIO

KING SQUARE SHOPPING CENTRE  
MANCHESTER STREET, OLDHAM  
Telephone: 061-624 1327

Kick off at 12 o'clock at the:-

### DOG & PARTRIDGE

Constantine Street,  
Greenacres.

Your Hosts

### KEVIN & CHRISTINE

Lunchtime Snacks available

## All the best from

# Matthew Brown

THE BREW THAT SPONSORS RUGBY LEAGUE DRINK IT AT:-

### THE SHEPHERDS BOY

Huddersfield Road,  
Oldham

Your Hosts

### COLIN & NORMA

## All the best from

# Matthew Brown

Convert to Slalom Lager at:-

### PRINCE OF WALES

Spencer Street,  
Oldham.

Your Hosts

### PETER & MILDRED

Bar Snacks available

## All the best from

# Matthew Brown