

PROGRAMME SPONSOR



SALFORD AUTOMATICS LTD

FRANKLIN IND ESTATE, FRANKLIN ST
OLDHAM OL1 2AX

Tel: 061-665-2760/061-678-8057

Oldham

Red & White Hooped
Jerseys/Blue Shorts

1. Alan Taylor
2. Green Vigo
3. Mick Parrish
4. Brian Caffery
5. Mike Taylor
6. Paul Taylor
7. Ray Ashton
8. Wally Jones
9. Alan McCurrie
10. Mick Morgan
11. Chris Phelan
12. Colin Hawkyard
13. Terry Flanagan

Subs:

14. Birkby
15. T. Nadiole

Todays *mitre*
Matchball donated by



**CROSSLEY
CONSTRUCTION**
Bacup, Lancs.

Referee:

S. Wall (Leigh)

Touch Judges:

D. Watson (Heywood), W. Brown (Manchester)

Leeds

1. Neill Hunt
2. Neill Hague
3. Les Dyl
4. Tony Currie
5. Eric Grothe
6. John Holmes
7. Kevin Dick
8. Gavin Jones
9. David Ward
10. Trevor Patterson
11. Wally Fulton/Smith
12. Terry Webb
13. David Heron

Subs:

T.B.A. 14.

T.B.A. 15.

TEAM SPONSOR
CARRION CROW
Huddersfield Road
Oldham

PLAYER SPONSOR
COMPUTATILL LTD.
77-79 Chadderton Way
Tel: 061-652 8006

NEXT MATCHES AT WATERSHEDDINGS

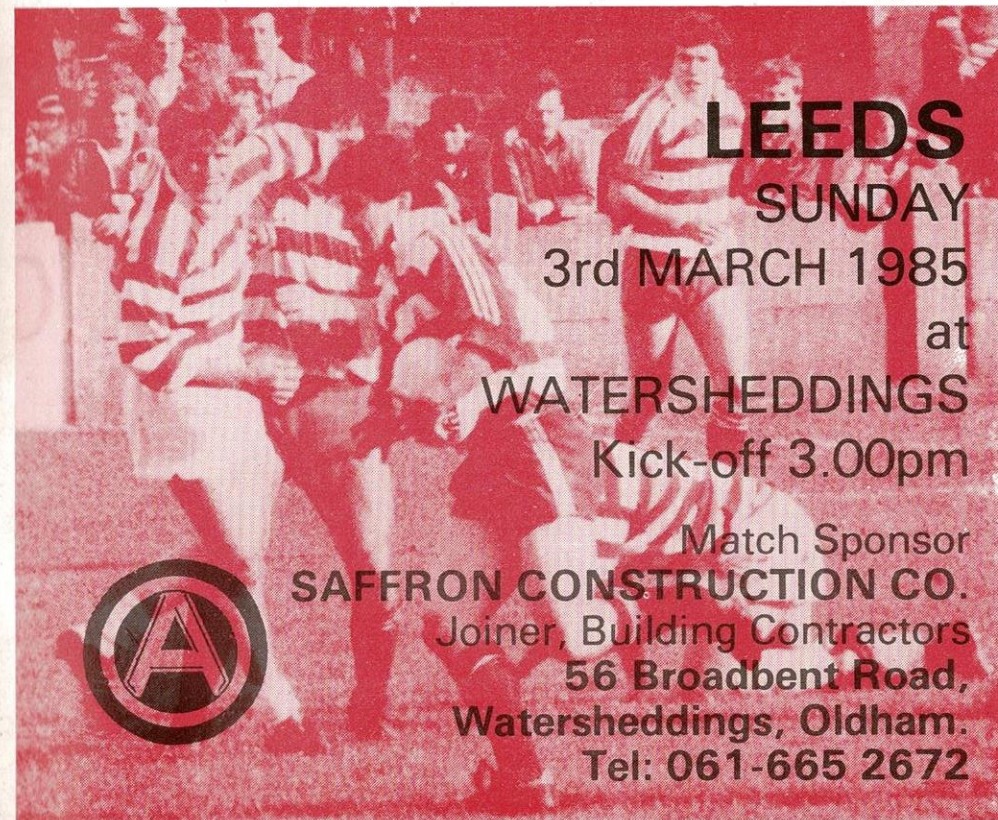
Friday 8th March Oldham V St. Helens



RUGBY LEAGUE CHAMPIONSHIP DIVISION ONE

OLDHAM

versus



LEEDS SUNDAY

3rd MARCH 1985

at

WATERSHEDDINGS

Kick-off 3.00pm

Match Sponsor

SAFFRON CONSTRUCTION CO.

Joiner, Building Contractors

56 Broadbent Road,

Watersheddings, Oldham.

Tel: 061-665 2672



OFFICIAL PROGRAMME 30p

WE'VE GOT THE TOUGHEST TEAM IN EUROPE.



They make 'em tough in Oldham.
Trucks that tackle the opposition head on and beat them hollow on our home ground.

Because they're specifically designed for British conditions: the mud and the slush, the hills and the motorways, the rules and the regulations.

That's why you'll see the Big A out in front in all sorts of tricky situations.

Seddon Atkinson. Born **SEDDON ATKINSON** in Oldham. Bred for Britain. **NOBODY CAN BEAT US ON OUR HOME GROUND.**



OLDHAM RUGBY LEAGUE FOOTBALL CLUB OFFICIALS

The Pavilion, Watersheddings, Oldham
Tel: 061-652 5244 & 061-624 4865

President: R. Hatton
Chairman: H. V. Ashworth
Vice-Chairman: K. Potter
Treasurer: J. Hall

Committee: E. Bayliss, K. Broadbent, M. Greenway, R. Ogden, K. Potter, N. Tench, D. Walton
Hon. Architects: Hall, Needham Associates
Hon. Club Solicitor: A. J. Adler
General Manager: F. Myler
Hon. Secretary: F. Howarth, B.A.
Coaching Staff: Brian Gartland

Professional Playing Staff

Adrian Alexander - Ray Ashton - K. Atkinson - I. Birkby - A. Bishop - Brian Caffery - L. Chadwick - Leslie Cook
M. Coombes - Stephen Dobb - Terry Flanagan - Alan Forster - Des Foy - Andrew Goodway
Colin Hawkyard - Jim Hornby - Clive Jones - Wally Jones - Paddy Kirwan
Steve Littler - Paul Lowndes - Ashley McEwen - Alan McCurrie - Robert Marsden - Mick Morgan
Geoff Munro - Tom Naidole - David Nicholson - Tony Ogden - Denis O'Neil
Mike O'Rourke - Gareth Owen - Mick Parrish - Alan Platt - Gordon Pollard - Ian Sanderson - Paul Sherman
Alan Taylor - Mick Taylor - G. Vigo - Gary Walczak - Joe Warburton - Mike Worrall

Hon. Consultant Orthopaedic Surgeon: Mr. H. Thompson.

Hon. Dental Surgeon: Mr. N. Gibbison

Physiotherapist: Mr. A. Bonnelle. Asst. Physiotherapist: Mr. J. Watkins

Commercial Manager: Terry Conroy, 061-620 4870

Social Club Manager: J. Gallagher. Groundsman: J. Walker

Asst. Groundsman: W. Caine. Official Time Keeper: J. Roscoe

CLUB RECORDS

Record Victory	67-6 against Liverpool City April 59
Record defeat	11-67 by Hull K. R. Sept. 78
Record attendance	28,000 v Huddersfield Feb 24th 1912
Record receipts	£9,100 v Wakefield 24th Feb. 1980
Record transfer fee paid	£18,500 to Hunslet for Mick Parrish Sept. 1980
Record transfer fee received	£11,002, 10s. from Workington for Ike Southward Jan. 62
Record try scorer	Reg Farrar 49 tries 1921/22 season
Record goal scorer	Bernard Ganley 224 goals 1957/58 season
Record point scorer	Bernard Ganley 28 points v Liverpool City April 59
First game	October 21st, 1876 v Stalybridge
Highest number of points scored	Bernard Ganley 2,881
Most appearances	Joe Ferguson 685
Most tries	Pre 1900 Jack Hirst 233. Since 1900 Alan Davies 182

CLUB HONOURS

Rugby League Championship Play-off winners:	1909-10, 1910-11 and 1956-57
Runners-up:	1906-07, 1907-08, 1908-09, 1921-22 and 1954-55
First Division Champions:	1904-05
Second Division Champions:	1963-64 and 1981-82
Rugby League Challenge Cup Winners:	1898-99, 1924-25, 1926-27
Runners-up:	1906-07, 1911-12, 1923-24 and 1925-26
Lancashire Cup Winners:	1907-08, 1910-11, 1913-14, 1919-20, 1924-25, 1933-34
	1956-57, 1957-58 and 1958-59
Runners-up:	1908-09, 1911-12, 1918-19, 1921-22, 1954-55, 1966-67 and 1968-69
Lancashire Championship Winners:	1907-08, 1909-10, 1921-22, 1956-57 and 1957-58
Runners-up:	1908-09, 1910-11, 1911-12, 1919-20, 1923-24 and 1954-55
Lancashire Shield Winners:	1975-76 and 1979-80
Colts Premiership Trophy:	1979-80

WATERSHEDDINGS SURVEY

TODAY'S game against Leeds is the middle match of a run of three consecutive home games which should go a long way to deciding whether or not we will reach the top four of the Slalom Lager championship at the end of the season.

Last Wednesday night we played Castleford here in a repeat of the Challenge Cup first-round tie at Boundary Park when the Wheldon Road side was successful and then went on to beat Workington in round two.

We follow up today with a crucial match against Leeds, who are also in the running for the top four place, and then next Friday night we play at St. Helens, also at home.

As we had no match last Sunday and St. Helens won at Barrow we were edged out of the top-four for the first time last Sunday but, hopefully, we will be back in now so long as we managed to beat Castleford in midweek and thus avenge our cup-tie disappointment.

It is a very tight race now for the top-four with five clubs edging out ahead of the pack, although Widnes can never be discounted from making a late challenge and Hull have so many matches in hand that it is impossible to be accurate about their chances of reaching the target.

The five clubs who are making the running at present are Hull K.R., St. Helens, Wigan, Leeds and Oldham — and as we play Leeds today and St. Helens at home next weekend it is easy to see just how important the next eight days will be for the Oldham club.

There has been talk in the press that our game against Saints next weekend might be switched to Friday.

This was confirmed on Wednesday of this week, so please note: Oldham V St. Helens, Friday 8th March 7.30pm kick-off.

After the Saints game we have a run of three away matches — at Hull on Sunday, 17th March, at Hunslet on Sunday, 24th March and at Wigan on Tuesday, 26th March.

This is a new date for the Wigan game, so please make a note in your diary.

On Sunday, 31st March, we meet Workington here at Watersheddings, followed by Halifax away on Good Friday, 5th April, Wigan at home on Easter Monday, 8th April, and Castleford away on the final day of the league season, Sunday 21st April.

When these notes were compiled we had still to re-arrange the Leigh game at Hilton Park, which was postponed on February 17th.

Nevertheless, when we have played Saints next Friday we will have eight First Division matches left — and six of them will be away from home. This makes it imperative that we pick up points today and next Friday, against two sides who, like ourselves, are also out of the Challenge Cup and will therefore be putting all their energies into a championship or top-four challenge.

Next Friday, of course, sees one of the world's top players here in the shape of Aussie centre star Mal Meninga.

Meninga helped Saints to carry off the Lancashire Cup earlier this season and had the Knowsley Road men not had the misfortune to draw the powerful Hull K.R. side in the first-round of the Challenge Cup, you can wager that the big Aussie would have been making a Wembley bid.

Meninga is, without doubt, one of the biggest draw cards in the game today and we hope that local RL fans will turn out in force to watch what should be a cracking match between Oldham and the Saints.

SURVEYORS WALLERS ESTATE AGENTS AUCTIONEERS



2 The Market Place
Oldham OL1 1JG
Tel: 061-626 3471 (5 LINES)

AGENTS
FOR

**the
Leeds
PERMANENT**
BUILDING SOCIETY

HALIFAX
BUILDING SOCIETY

BRANCHES AT

12/14 ROCHDALE ROAD, OLDHAM
TEL: 061-624 2875

42 HIGH STREET, LEES, OLDHAM
TEL: 061-620 2447

758 OLDHAM ROAD, FAILSWORTH
TEL: 061-681 3316

BRANCHES OPENING SOON AT

91 CHEW VALLEY ROAD, GREENFIELD

320 ASHTON ROAD, OLDHAM
061-652 7229

1062 MIDDLETON ROAD WEST, CHADDERTON
061-652 7228



Oldham Electrical
WHOLESALE LTD.

1/3 Peel Street, Chadderton, Oldham
Tel: 061-626 0990

*SUPPLIERS TO THE
ELECTRICAL CONTRACTING TRADE
AND INDUSTRY*

**EXCELLENT DELIVERY SERVICE
COMPETITIVE PRICES**

OPEN:- MONDAY- FRIDAY 8 a.m.-5 p.m. SATURDAY 8.30 a.m.-12 NOON

A WINNER AT HOME

Slalom Lager Voted the World's Best



Trade enquiries Spearhead 01-828-3443

More Historical Notes on the Leeds Club *by Tom Webb*

During the last season in which Leeds were members of the Rugby Union the club membership stood at 1,291 but in 1895-96 it is significant that the decision to join the Northern Union had an upsetting influence as only 402 members were enrolled. There was a loss of £272 in that first season compared with a profit of £1,179 in the club's 1891-92 season when only six matches were lost and the final of the Yorkshire Cup was reached.

It is worth noting that for the eight seasons of the Northern Union the membership remained below 700, jumping from 657 in 1902-03 to 2,267 in 1903-04. The turning point for the club was when Leeds Parish Church disbanded their rugby teams with most of their best players crossing the city to Headingley from Crown Point. Being excluded from the Northern Rugby League when it was formed in 1901-02 the club had perforce to play in the depleted Yorkshire Senior Competition where it won its first Northern Union trophy, the Yorkshire Senior Competition Shield by topping the league table. The Northern League then formed a second division, Leeds finishing as runners-up to Keighley and did well to reach the third round of the Challenge Cup. Following promotion to the first division the club finished third in its first season in the higher grade. A couple of years later the club finished third in the league, which had become a one division structure containing all the senior clubs.

One of the stars when Leeds moved over from Union to League was Tommy Summersgill, who along with F. T. Wilkinson, M. Fletcher and G. Fowler were the only survivors of the 1891-92 Yorkshire Cup Final side to play under the new set-up.

Tommy Summersgill was a member of the first Leeds team to play after Leeds St. John's had become the football section of the Leeds Cricket, Football and Athletic Company on the occasion of the Manningham game played on September 20th 1890.

A world champion cyclist as well as a great footballer, Tommy Summersgill was the man who scored the first try at Headingley. After 10 years as a player he was connected with the club for a half century as director, committeeman and scout being a regular attender at Headingley until his death at the age of 86 in June 1959.

In May 1951, Leeds made an important appointment when Ken Dalby was chosen as full-time manager and coach to all the teams from the youth sides to the senior thirteen. Frank Dawson who had been coach for most of the time since the war was offered a new appointment. Ken, a schoolteacher, had built up a grand reputation in fifteen years association with schoolboy rugby in which he had been secretary of the Leeds and Yorkshire organisations. In the three years he had been in charge of the game at the Kirkstall Road school his charges had won every trophy open to them.

As a volunteer worker at the Burley Boys' Club he had brought along likely players to the attention of the Leeds directors including Gordon Brown and Jimmy Dunn. He was so keen to help Gordon Brown that he played alongside him in the Burley Rugby Union team for a season.

This period was very important for Leeds. George Airey the club chairman renewed the contract for Bob McMaster the Australian front-row-forward, signed Arthur Clues the Australian second-row-forward and Bert Cook the New Zealand full-back. He tried hard to re-engage Ken Kearney but the hooker decided to return to his native Australia.

The "Headingley Story" volumes, three on Rugby League and one on Cricket have been compiled by Ken Dalby who spent a tremendous amount of time researching the activities of the club. He is a great friend of William H. ("George") Hirst who was associated with him at Leeds where he was club secretary in addition to being Yorkshire secretary for many years, a job he relinquished only recently.

HERE COME LEEDS

TODAY'S match against Leeds is a very important one for both clubs in terms of top-four qualification at the end of the season and a home place in the first-round of the premiership.

Both clubs have very similar playing records and as Leeds, like Oldham, had little to show from the county cup or the Challenge Cup, the men from Headingley will be going all out today to enhance their chances of finishing in the top four.

The biggest talking point about Leeds this season is their heavy concentration on Australians and, more recently, their appointment as coach of Malcolm Clift from Sydney, who has had long associations with the Canterbury-Bankstown club.

Mr Clift was flown in a few weeks ago, just in time to see Leeds take a first-round Challenge Cup knock-out at the hands of Widnes.

You can gamble that he will have been very busy since in his attempts to ensure that Leeds do well in the remaining Slalom Lager championship matches, so Oldham must be on their guard today.

Leeds will also want to avenge our success last autumn at Headingley when we came good in the final 15 minutes to emerge with both first division points.

Since our win at Headingley, Leeds have been further strengthened by the capture of another big name from Sydney — Eric Grothe. He is, without doubt, one of the most feared wingers in world Rugby League and a man who is capable of pulling in the crowds in much the same way as the man who has just left Wigan to return home Down Under, John Ferguson.

Wingers like Grothe and Kerry Boustead have kept Ferguson out of the Aussie Test limelight as well as another Leeds import, Neil Hunt.

Grothe, of course, first burst onto the England scene in 1982 when he toured here with the famous Kangaroo party of that year that swept all before it.

He really is an awesome sight when in full flight so Oldham will have to be on their mettle defensively today to try and stop Leeds getting the ball to their twin wing threat of Grothe and Hunt.

Mind you, they will not need introducing to our own Aussie pair, Paul Taylor and Chris Phelan because both play for the Parramatta club in Sydney like so many of the Aussie stars who are in this country at present.

Among other Australian players at Headingley are centre Tony Currie and forwards Terry Webb, Trevor Patterson, Gavin Jones, and Wally Fullerton-Smith.

Rickie Lulham has also played with Leeds, but he has now gone home. Another import, this time from New Zealand, is Maori hooker Trevor Clark, who first caught the eye when the Maori tour party which included Nick Wright, later to join Oldham, toured England two years ago.

It is interesting to note, though, that Leeds have not neglected local talent while going abroad for their stars, and they had two players in the Great Britain team that played France at Headingley on Friday — prop Roy Dickinson and centre David Creasser.

Other Leeds players are household names in Rugby League — men such as veteran John Holmes, Kevin Dick, Neil Hague, Mark Conway, David Ward to name but a few.

Roy Powell has not been around for as long as most of those players, but Leeds believe there is a big future in the game for this young second-rower, who is a member of Maurice Bamford's Great Britain squad.

Maurice was Leeds coach when he was appointed to succeed our own Frank Myler as Great Britain's boss for the next three years, and although Malcolm Clift has now taken over the reigns at Headingley, Maurice will remain there until the end of this season in a managerial capacity.



**NEW TIMBER
AT THE
LOWEST PRICE**

Stockists of
TIMBER PLYWOOD
HARDBOARD WINDOWS
DOORS MOULDINGS
ROOF INSULATION

Plus all your timber requirements

O.B.

TETLEY ALES

OLDHAM RUGBY SOCIAL CLUB

Call in for a drink after the match

Full restaurant facilities 4.30 p.m. — 9.30 p.m.

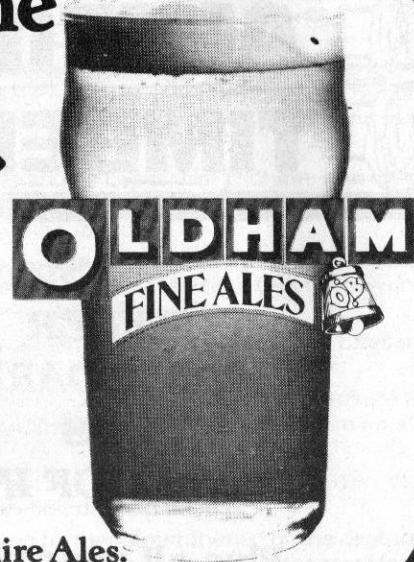
Private rooms available for weddings, etc.

Telephone: 061-624 0368

TETLEY

O.B. ALES

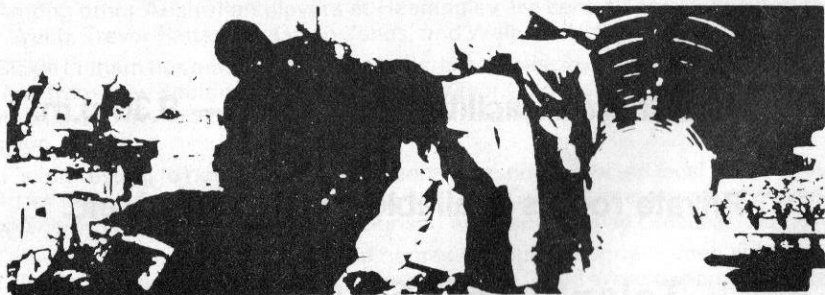
**After the game
have a night
on the town.**



**Oldham Brewery-
Brewers of traditional Lancashire Ales.**

QUEGHAN

pacemakers in civil engineering



**Queghan House, off Shaw Road, Oldham, Lancs.
Telephone: 061-620 2115/6/7**

Harvey Ashworth

(manchester Ltd.)

(CHAIRMAN OLDHAM RUGBY LEAGUE Football Club)
The Abattoir, River Park Road, Manchester 10
Tel: 061-223 2097

WILDBORES RADIOS LTD.

**4 HENSHAW STREET (opposite C&A's)
OLDHAM**

Tel: 061-624 7907

Branches at

76 Yorkshire Street,
Oldham

78 Yorkshire Street,
Rochdale

and
Boshers

67 High Street,
Lees

All leading makes of
video

Colour T.V. and Teletext
**Ferguson Phillips I.T.T.
and Sharp.**

*Full stock of Microwaves, Music Centres/Rack Systems and Stereo
Radio Cassettes*

LANSDOWNE IRONWORKS
WARD STREET, CHADDERTON
OLDHAM OL9 9BB
Tel: 061-624 4216. 061-652 9345

Parkcrest Engineers Ltd.

Engineers, Pattern Makers, Millwrights
Electric Lifts, Hoists & Conveyor Makers

NORTH WEST PUMP SERVICES

Unit 5 Parkside Ind. Estate
Edge Lane Street, Royton, Oldham
Supplies, Installations, Service
Petrol Pumps, New & Reconditioned
Electronic Security Systems
061-633 9533

OLDHAM CARAVAN CENTRE

Large Indoor Display of
New & Used Caravans & Awnings,
Accessories Galore, Workshops

MIDDLETON ROAD, OLDHAM, LANCs.
061-624 6755/6731

KICK OFF AT SPINNERS ARMS

LEES ROAD, OLDHAM
TEL: 624 5398

STONES BEST BULLER
Bar Snacks, Pool, Darts, etc

MARTINS MIDLAND LTD.

PARTS
SALES
SERVICE

PARK ROAD, OLDHAM
LANCASHIRE
TELEPHONE: 061-652 7131

JUDGE FOR YOURSELF...
the quality of our services at...

Marshall Pump Systems Ltd.

*Distributor and Stockist of pumps by:
JABSCO, MONO, MARCORE, GRUNDFOS
WADE, IWAKI, STUART TURNER, LUTZ
STAHOPF, TUTHILL, WORTHINGTON
SIMPSON, HÖFFMA, LEE HOWL,
MODERN*

RHODES BANK, OLDHAM OL1 1UA
Telephone: 061-678 6111
Telex: 668159

EXPRESS LOANS

Free Financial Service to
Home Owners & Mortgage Payers
Tenants Personal Loans, Mortgages
& Second Mortgages Arranged
Business, Industrial & Commercial
Finance

All enquiries welcome. Phone anytime

061-969 4131
64 Cross Street, Sale, Cheshire

H^{OT} TIME travel agency

Unit 4, Chadderton Precinct
Chadderton, Oldham, Lancs.

Tel: 061-633 6239/0

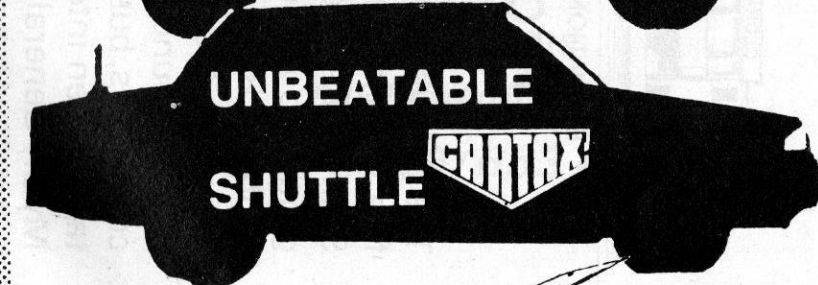
Worldwide Travel
Special offers all the year round
Excellent service from our
friendly staff

CARTAX

652 8228

PRIVATE

HIRE



RINGWAY

SHUTTLE

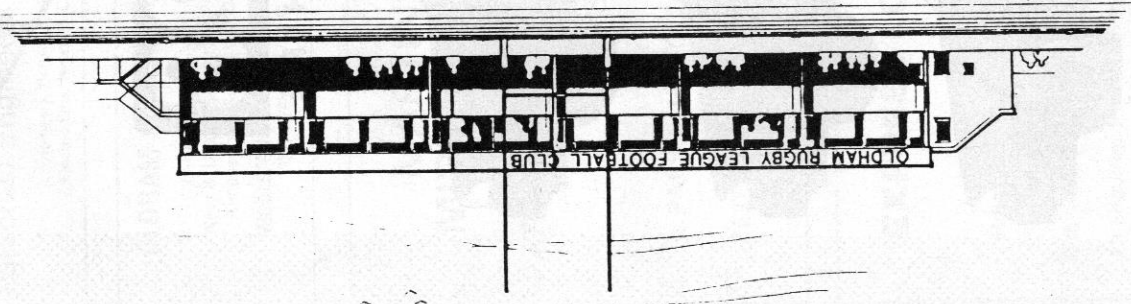
THANK YOU: To Eric Ververs of Irwin Construction, for supplying above drawing in such short notice.

061-624 4865

The Club is now aiming to have constructed an Executive Suite of five viewing boxes and a Private Executive Bar in the Hutchins Stand. The five boxes can be divided by partitions for smaller groups to make ten boxes in all if required. We think that the Oldham R.L.F. Club will not only gain financially from this executive facility but would also enhance the appearance of the whole ground. At this moment in time we are looking towards companies, businesses or private individuals to come forward and take a keen interest for further information, please contact Frank Myler, General Manager at the Club.

PROPOSED EXECUTIVE BOXES LOOKING TO THE FUTURE

ELEVATION IRWIN CONSTRUCTION GROUP in association with FLETCHER, ROSS & HICKLING Architects LEEDS.



TODAY'S MATCH SPONSORS

Saffron Construction Co.

Joiner, Building Contractors

**56 BROADBENT ROAD
WATERSHEDDINGS
OLDHAM**

Tel: 061-665 2676

T. J. GUINAN LTD.

BUILDING MATERIALS SUPPLIES

*Grimshaw Lane
Middleton*

Tel: 643 6148 / 653 4583

BRIAN BATTY Daily Mail

It will be a case of picnic hampers and champers in the car park at Headingley on March 3rd.

Will it be shades of Twickers around the pitch with cries of 'Jolly well done, Smithers and Watters'.

I only ask because the 1985 Varsity match between the universities of Oxford and Cambridge will take place on that date on the home of Leeds Rugby League, kick-off 3.00pm.

Of course, I am referring to the 13-a-side chaps who will be figuring in the fifth annual match between the universities.

With the score currently standing at two wins each a highly competitive, yet hard fought match, is expected.

The decision to stage the match at Headingley has stimulated great interest in both universities and it is now likely that this superbly equipped ground will become a permanent venue for the game.

This will enable officials of the University and College Amateur Rugby League Association to negotiate a long-term sponsorship deal for the event which they hope to do before the 1986 clash.

UCARLA officials, with co-operation from BARLA, have decided to mark the event by inviting school parties to the game.

Invitations will be sent to every middle and high school in West Yorkshire and anyone wishing to have any further info should get in touch with Maurice Oldroyd, the national administrator.

Moving further afield the second leg of the National Student Rugby League festival will be held on March 2nd at the South Glamorgan Institute of Higher Education sports ground.

In the first leg held in Liverpool in November the English Universities defeated the British Polytechnic 14-6 and Welsh Universities and Colleges defeated the English Colleges by 27 points to 18.

The holding of the second leg of the tournament in Wales is a tribute to the development of student rugby league in Wales in recent years.

Rugby League clubs are now firmly established at the University of Higher Education and it is likely that in the near future a club will be formed at the Polytechnic of Wales in Pontypridd.

SUPPORTERS CLUB NEWS

President: Mr. D. Blackburn, **Chairman:** Mr. D. Pilkington, **Treasurer:** Mr. T. Heywood, **Secretary:** Mrs. J. Pilkington, **Committee Members:** Miss. A. Collinge, Mrs. H. Heywood, Mrs. L. Wolstencroft, Mr. I. Pilkington, Mrs. E. Crowther, Mrs. L. Chadderton, Mr. C. Clarke, Mr. J. Gallagher, Mrs. S. Collinge, Mr. B. Doleman, Mrs. A. Doleman, Mrs. G. Doleman.

The Supporters Club would like to welcome all the Players and the Committee of our visitors from Leeds for todays' match. Hoping we have a good, clean and entertaining match. We would like to invite all the supporters to our canteens situated at different parts of the ground and our souvenir shop at the pavilion end and the programme shop at the waterhead end.

OLDHAM SUPPORTERS CLUB

AWAY COACHES to HULL

on Sunday 10th March

Leave Social Club at 11.30am

Prices: Adults £4.25, Juniors £2.20

AWAY BY CAR

End of M62 follow signs Hull in 10½m. at roundabout, take 3rd exit A1166 into Askew Ave in ½ at roundabout. Take 2nd exit A1105 into Hessle Road, ½ further into Boulevard and into Airlie Street for Hull F.C.

The Supporters Club are once again holding a **Wembley Draw**, tickets are 5p each or 50p per book (12), anyone who would like any books please enquire at canteens. The prizes are: Winners £50, Runners-up £20, Semi-Final £5 each. Other teams drawn £1 each. **This year Fun Run** is being held on Sunday 19th May 1985. Details later. Supporters Club Committee, Ladies Committee, Ex-Players are jointly holding a **Race Night** on Thursday 14th March in the Social Club. Tickets are 50p each. Please get your tickets from any of the committees.

Souvenirs in our shop are Sweaters at £10.00 each, Sweatshirts at £8.50, and juniors £6.50, Scarves (Oldham) £2.75, Ties £3.50, Lapel Badges 65p, Blazer Badges £7.50, Patches £1.00, Gloves (small and large) £1.50, Pens 25p, Red and White Shirts with Club Badges 24" to 42".

Supporters Club membership is only £1.00 per person.

Junior Reds welcome any new members so that you can act as ballboys and ball girls. Saturday morning Social Club, new sew-on badges. Contact Joe in the Social Club. Membership £1.00 as last year. A symbol on sale, see J. Gallagher (Social Club).

LIFELINE

A reminder to Lifeline and Lottery Members. We are now situated at the rear of the pavilion opposite the greyhound track. New agents required for Lifeline and Lottery, phone 626 4501.

Lifeline winner, Week 20, £1,000 number 0272, J. SHARPLES, Bardsley.

Brand new car to be drawn for on April 8th Oldham V Wigan game during half-time period. Don't miss the chance of winning this fabulous prize, phone 626 4501.

JOIN LIFELINE NOW

For all your chemist sundries,
cosmetics and toiletries

F. YATES



(Proprietor: Malcolm S. Fagelman)

831 Hollins Road
Hollinwood
Oldham

Telephone: 681 1291

Established over 50 years

KEN LEYLAND SIGNWRITER

061-620 1056

Joe Gallagher, who runs the junior reds, is still keen to recruit more youngsters. Membership costs £1 for the season, there are regular functions on Saturday mornings, and members can get the chance to act as ball boys or girls on match days. If you are interested see Joe in the Social Club.



mitre[®]
Gives you an
unfair
advantage

Mitre Sports, Bayhall Works, Birkby, Huddersfield, Yorks. UK
Tel: 0484 37488 Telex: 517470

HI-WAY COMPONENTS

Suppliers of Commercial Vehicle
Components to the Trade
50 Lansdowne Road,
Chadderton, Oldham
061-652 0315

M. & B. SUPPLIES

Illuminated & Acoustic Ceilings
Theatres, Clubs, Restaurants, etc.
ALL TYPES OF JOINERY
13A RIPPONDEN ROAD
061-633 4313

DINE AT THE Prince George Hotel (Residential)

193, Ripponden Road,
Oldham.
061-633 1328

Excellent Food Superbly Served

Lunch Time 12.00 - 2.00
(Monday to Friday)

Evenings from 6.30
(Monday to Saturday)

**Wedding Breakfasts
and
Special Occasions
Catered For**

YOU'LL FIND ALL THE
OLDHAM LOCAL SPORT

IN DEPTH
IN MONDAY'S

Oldham Evening Chronicle

OLDHAM SNOOKER CENTRE

HIGHFIELD STREET
**20 Full Size Tables
Plus Match Table**
Lounge and Licensed Bar
Food

FITTED BEDROOMS AND KITCHENS
All custom built — Free estimates given
Complete design & fit service with
12 months guarantee
Samples & Catalogue available
Showrooms now open, view by appointment

ARTISTIQUE DESIGN

Tel. SHAW (2) 881284
UNIT 22, PARKSIDE ESTATE, ROYTON

FLASHBACK by Tom Webb

5 Years Ago

Wednesday, December 26th, 1979

OLDHAM 13 ROCHDALE HORNETS 0 (Second Division)

Oldham: Murphy, Munro (2 tries), Ward, Lunn, Fitzsimons (2 goals), Francis, Gwilliam, Alexander, Martland, Forster, Herbert (try), Blackwood, Flanagan.
Subs: Mordell for Forster and Ashton for Martland.

Rochdale H: McGiffen, Holland, Banks, Rawlinson, Campbell, Nolan, Bucys, Hodkinson, Langan, Wilson, Grimes, Gartside, Sanderson.
Subs: Gorvin for Hodkinson and Fletcher for Gartside.
Referee: J. McDonald (Wigan). Attendance 3,716. Half-time score 5-0.

10 Years Ago

Thursday, December 26th, 1974

HUDDERSFIELD 12 OLDHAM 11 (Second Division—Top of table clash)

Huddersfield: Bedford, Leathley, T. Doyle, L. Shaw, Senior, Knight, Hartley (3 goals), Heppleston, Miller (try), Weavill, Tomlinson, J. Doyle (try), Welsh.
Subs: Davies and Shepherd did not play.

Oldham: Murphy, Elliott, Larder (2 goals and try), Wainwright (drop goal and try), Barton, Blair, Treasure, Ashcroft, O'Mahoney, Hughes, Hall, Brown, Farrell.
Subs: McCracken for O'Mahoney, other not known.
Referee: R. Campbell (Widnes). Attendance 3,989. Half-time score not known.

15 Years Ago

Friday, December 26th, 1969

SWINTON 28 OLDHAM 2 (Northern League was composed of one division)

Swinton: Gowers (5 goals), Gomersall (2 tries), Fleet (try), Buckley (try), Philbin (try), Davies (try), Kenny, Bate, Clarke, MacKay, Holliday, Smith, Robinson.
Subs: Not known.

Oldham: Murphy, Elliott, Larder, Garrett (goal), Swanston, Davies, Smith, Gardiner, Taylor, Wilson, Irving, McCormack, Clark.
Subs: Not known.
Referee: J. Manley (Warrington). Attendance 4,500-5,000. Half-time score 5-2.



Bukta Sportswear

BUKTA CLOTHING, REPLICIA SHIRTS
PUMA BOOTS AND TRAINING SHOES AS WORN
BY OLDHAM R.L.F.C. ARE AVAILABLE FROM

TENCH (sports) LIMITED

S4 ARNDALE CENTRE
MIDDLETON
MANCHESTER
Tel.: 061-643 7515

16 THE PARADE
SWINTON
MANCHESTER
Tel.: 061-794 0995



North West Decoiling Ltd.

Steel Stockholders
Decoilers & Shearers

Tel:
0925 415111

Telex:
627135

We can keep you warm
up EVEREST

So we can at "Sheddings"

See our range of OUTDOOR CLOTHING,
THERMAL WEAR, DUVET JACKETS,
WATERPROOF-WAXED COTTON
WEAR, BOOTS, SOCKS, GLOVES

PEGASUS SPORTS

15/17 Court Street, Uppermill
Tel: Saddleworth 70653

TRY US FOR THE RIGHT TACKLE

FOR AN EARLY
MORNING DELIVERY
SERVICE OF MILK
& DAIRY PRODUCE

WE HAVE
GOTTA
LOTTA
BOTTLE

COUNTHILL
DAIRY

THE DAIRY
ON YOUR
Tel: 633 3911 DOORSTEP

REGENT STREET,
OLDHAM.

*The Dairy That's
Proud Of It's
Service*

BOOK WITH
THE FRIENDLY ONE



**Travel
Agency**

The Market Hall,
Albion St., Oldham
Telephone: 061-652 2118/9

partington

T. Partington & Son (Builders) Ltd.
Stock Lane, Chadderton
Oldham OL9 9EZ Tel: 061-633 3951

inches

Rhodes Bank, Union Street
Oldham

**SENSATIONAL SLIMMING
AND FITNESS OFFER
ONE WEEK MEMBERSHIP
£1**

PAUL PRICE

Supplier of Quality Cars
Tel: 061- 620 3984
220 Rochdale Road, Oldham

SANOPAL DOUBLE GLAZING

Aluminium Double Glazed Windows, Patio
& Residential Doors, Sealed Units & Glass
Supplied to Trade

ALSO TRADE SUPPLIED
Globe Works, Globe Street,
Oldham, Lancs.
061-620 5580/665 3069

'SNAPHAPPY'

Photographic Services
**NOT ONLY 30% BIGGER BUT
100% FASTER AND
100% MORE VERSATILE**
Instant passport or I.D. Pictures available
155 YORKSHIRE STREET
RHODES BANK, OLDHAM
8.30 - 5.30 Mon - Sat

P. & A. CLARKE

*Accident Repairs, Bodywork
Chassis Welding & Paintwork Etc.*
Rear of General Motors
St. Mary's Way, Oldham OL1 1NS
Telephone: 061-652 0507
Night: 061-633 2782/061-796 7913

SMARTY'S CLEANERS

652 1500
Hillards Precinct
First off the car park
**SUPPORTERS
SPECIAL**
Same day service on Saturday
10p off with this advert.

ARMER QUALITY COMPONENTS LTD

Greenacres Road, Oldham
Telephone: 061-620 5203

*Sheetmetal Workers to Electronic
and Display Trades*

GEORGE HILL TIMBER

Doors

Garador

Mouldings

PLAS

SCOTTFIELD
SAW MILLS

ASHTON ROAD
OLDHAM

Telephone:
061-652 7421

Ironmongery

OLDHAM R.L.F.C. FIXTURES 1984-5

1984

SEPTEMBER

2—Hunslet (3.00)	W 32-10	H
9—Workington (2.30)	W 44- 2	A
12—Widnes (7.30)	W 18- 2	H
16—COUNTY CUP	L 26-32	
23—Leeds (3.00)	W 18-14	A
30—Leigh (3.00)	W 12- 8	H

OCTOBER

7—Barrow (2.30)	W 34-12	A
14—Warrington (3.00)	L 15-16	H
21—St. Helens (3.00)	L 5-32	A
28—Featherstone (3.00)	W 26- 8	H

NOVEMBER

4—Bradford (3.00)	W 23-14	A
11—Hull K.R. (3.00)	L 5-31	H
18—JOHN PLAYER TROPHY v York	W 22- 6	
25—Warrington (3.00)	W 18-12	A

DECEMBER

2—JOHN PLAYER TROPHY v Hull	L 14-26	
9—Barrow (3.00)	W 44- 8	H
16—Hull K.R. (3.00)	L 0-14	A
26—Widnes (3.00)	L 14-10	A

1985

JANUARY

1—Halifax (3.00)	W 24-12	H
6—Featherstone (3.30)	W 6-13	A
13—Bradford (3.00)	Postponed	
20—Castleford (3.00)	Postponed	
27—Wigan (3.00)	Postponed	

FEBRUARY

3—Hull (3.00)	L 22-10	H
10—CHALLENGE CUP	Postponed	H
17—Leigh (3.30)	Postponed	
17—Castleford (Cup)	L 8-14	H
27—Castleford (7.30)		H

MARCH

3—Leeds (3.00)		H
8—St. Helens (7.30)		H
17—Hull (3.00)		A
24—Hunslet (3.30)		A
26—Wigan (7.30)		A
31—Workington (3.00)		H

APRIL

5—Halifax (7.00)		A
8—Wigan (3.00)		H
21—Castleford (3.30)		A

'a' team fixtures

1984 (Subject to change)

AUGUST

31—Salford	A
------------	---

SEPTEMBER

8—Workington	H
15—Carlisle	A
21—Widnes	H
27—Leigh	A

OCTOBER

12—Warrington	A
27—Featherstone	A

NOVEMBER

2—Bradford	H
9—Salford	H
20—Wigan	A
23—Warrington	H

DECEMBER

1—Carlisle	H
8—Barrow	A
14—Swinton	H
21—Widnes	A
28—Halifax	A

1985

JANUARY

5—Barrow	H
11—Bradford	A
18—St. Helens	H
25—Wigan	H

FEBRUARY

2—Swinton	A
22—Featherstone	H

MARCH

7—St. Helens	A
15—Halifax	H
22—Leigh	H
30—Workington	A

HOW THEY STAND

Up to and including 24th February

	P	W	D	L	F	A	Pts
Hull KR	17	15	0	2	413	192	30
St. Helens	17	13	0	4	482	259	26
Wigan	16	13	0	3	421	238	26
Leeds	20	13	0	7	436	268	26
OLDHAM	19	13	0	6	367	251	26
Featherstone	20	10	0	10	303	298	20
Widnes	19	10	0	9	298	345	20
Bradford N	18	9	1	8	339	294	19
Hull	15	9	0	6	348	213	18
Castleford	19	8	0	11	348	322	16
Warrington	19	8	0	11	336	401	16
Halifax	18	7	0	11	324	354	14
Barrow	19	6	0	13	331	590	12
Hunslet	20	5	1	14	312	586	11
Leigh	19	5	0	14	365	489	10
Workington	17	1	0	16	145	468	2

SLALOM LAGER

THE BREW THAT SPONSORS RUGBY LEAGUE DRINK IT AT

THE SHEPHERDS BOY

Huddersfield Road,
Oldham

Your Hosts

COLIN & NORMA

Bar Snacks available

All the best from

Matthew Brown 

ALL THE BEST FOR 84/85

PRINCE OF WALES

Spencer Street,
Oldham.

Your Hosts

WARREN & NORMA

Bar Snacks available

All the best from

Matthew Brown 