

PROGRAMME SPONSOR



SALFORD AUTOMATICS LTD

FRANKLIN IND ESTATE, FRANKLIN ST
OLDHAM OL1 2AX

Tel: 061-665-2760/061-678-8057

Oldham

*Red & White Hooped
Jerseys/Blue Shorts*

1. Alan Taylor
2. Green Vigo
3. Mick Parrish
4. Brian Caffery
5. Mike Taylor
6. Paul Taylor
7. Ray Ashton
8. Wally Jones
9. Alan McCurrie
10. Mick Morgan
11. Chris Phelan
12. Colin Hawkyard
13. Terry Flanagan

Subs:

14. Birkby
15. T. Nadiolo

Today's *mitre*
Matchball donated by



**TYSONS
Pharmaceuticals**

10 Knowsley St.,
Manchester 8
061-834 0793

Referee:

G. F. Lindop (Wakefield)

Touch Judges:

D. M. Russell (Rochdale), J. A. Drake (Manchester)

St. Helens

- Phil Vivers/
Kevin Wellens 1.
Barry Ledger 2.
Shaun Allen 3.
Mal Meninga 4.
Shean Day 5.
Steve Lea 6.
Neil Holden 7.
Tony Burke 8.
A. N. Other 9.
Peter Gourley 10.
Andy Platt 11.
Roy Haggerty 12.
Harry Pinner 13.

Subs:

- T.B.A. 14.
- T.B.A. 15.

PLAYER SPONSOR
COMPUTATILL LTD.
77-79 Chadderton Way
Tel: 061-652 8006

NEXT MATCHES AT WATERSHEDDINGS

SUNDAY 31st MARCH: OLDHAM v WORKINGTON

Printed by 'The Charlesworth Press', Manchester Road, Mossley. Tel: Mossley 3551
Photoset by Richard Boyes & Co. Ltd., 47/49 Market St, Stalybridge, Ches. Tel: 061-338 5858



**RUGBY LEAGUE
CHAMPIONSHIP
DIVISION ONE**

OLDHAM

versus

ST. HELENS

FRIDAY

8th MARCH 1985

at

WATERSHEDDINGS

Kick-off 7.30pm

Match Sponsor

WILLAND ENGINEERING

Chadderton Works

Stockfield Road, Oldham

Tel: 061-652 5123

061-624 8852



OFFICIAL PROGRAMME 30p

WE'VE GOT THE TOUGHEST TEAM IN EUROPE.



They make 'em tough in Oldham.
Trucks that tackle the opposition head on and beat them
hollow on our home ground.

Because they're specifically designed for British
conditions: the mud and the slush, the hills and the motorways,
the rules and the regulations.

That's why you'll see the Big A out in front in all sorts of
tricky situations.

Seddon Atkinson. Born **SEDDON ATKINSON** 
in Oldham. Bred for Britain. **NOBODY CAN BEAT US ON OUR HOME GROUND.**

OLDHAM RUGBY LEAGUE FOOTBALL CLUB OFFICIALS The Pavilion, Watersheddings, Oldham Tel: 061-652 5244 & 061-624 4865

President: R. Hatton

Chairman: H. V. Ashworth

Vice-Chairman: K. Potter

Treasurer: J. Hall

Committee: E. Bayliss, K. Broadbent, M. Greenway, R. Ogden, K. Potter, N. Tench, D. Walton

Hon. Architects: Hall, Needham Associates

Hon. Club Solicitor: A. J. Adler

General Manager: F. Myler

Hon. Secretary: F. Howarth, B.A.

Coaching Staff: Brian Gartland

Professional Playing Staff

Adrian Alexander - Ray Ashton - K. Atkinson - I. Birkby - A. Bishop - Brian Caffery - L. Chadwick - Leslie Cook

M. Coombes - Stephen Dobb - Terry Flanagan - Alan Forster - Des Foy - Andrew Goodway

Colin Hawkyard - Jim Hornby - Clive Jones - Wally Jones - Paddy Kirwan

Steve Littler - Paul Lowndes - Ashley McEwen - Alan McCurrie - Robert Marsden - Mick Morgan

Geoff Munro - Tom Naidole - David Nicholson - Tony Ogden - Denis O'Neil

Mike O'Rourke - Gareth Owen - Mick Parrish - Alan Platt - Gordon Pollard - Ian Sanderson - Paul Sherman

Alan Taylor - Mick Taylor - G. Vigo - Gary Walczak - Joe Warburton - Mike Worrall

Hon. Consultant Orthopaedic Surgeon: Mr. H. Thompson.

Hon. Dental Surgeon: Mr. N. Gibbison

Physiotherapist: Mr. A. Bonnelle. **Asst. Physiotherapist:** Mr. J. Watkins

Commercial Manager: Terry Conroy, 061-620 4870

Social Club Manager: J. Gallagher. **Groundsman:** J. Walker

Asst. Groundsman: W. Caine. **Official Time Keeper:** J. Roscoe

CLUB RECORDS

Record Victory	67-6 against Liverpool City April 59
Record defeat	11-67 by Hull K. R. Sept. 78
Record attendance	28,000 v Huddersfield Feb 24th 1912
Record receipts	£9,100 v Wakefield 24th Feb. 1980
Record transfer fee paid	£18,500 to Hunslet for Mick Parrish Sept. 1980
Record transfer fee received	£11,002, 10s. from Workington for Ike Southward Jan. 62
Record try scorer	Reg Farrar 49 tries 1921/22 season
Record goal scorer	Bernard Ganley 224 goals 1957/58 season
Record point scorer	Bernard Ganley 28 points v Liverpool City April 59
First game	October 21st, 1876 v Stalybridge
Highest number of points scored	Bernard Ganley 2,881
Most appearances	Joe Ferguson 685
Most tries	Pre 1900 Jack Hirst 233. Since 1900 Alan Davies 182

CLUB HONOURS

Rugby League Championship Play-off winners:	1909-10, 1910-11 and 1956-57
Runners-up:	1906-07, 1907-08, 1908-09, 1921-22 and 1954-55
First Division Champions:	1904-05
Second Division Champions:	1963-64 and 1981-82
Rugby League Challenge Cup Winners:	1898-99, 1924-25, 1926-27
Runners-up:	1906-07, 1911-12, 1923-24 and 1925-26
Lancashire Cup Winners:	1907-08, 1910-11, 1913-14, 1919-20, 1924-25, 1933-34
	1956-57, 1957-58 and 1958-59
Runners-up:	1908-09, 1911-12, 1918-19, 1921-22, 1954-55, 1966-67 and 1968-69
Lancashire Championship Winners:	1907-08, 1909-10, 1921-22, 1956-57 and 1957-58
Runners-up:	1908-09, 1910-11, 1911-12, 1919-20, 1923-24 and 1954-55
Lancashire Shield Winners:	1975-76 and 1979-80
Colts Premiership Trophy:	1979-80

WATERSHEDDINGS SURVEY

TONIGHT'S game against St. Helens here at Watersheddings is a little bit special for two reasons. First, it will herald the switch-on of our new floodlights. Second, we are delighted to welcome I.T.V., who will be here to screen the highlights later this evening to launch a new "RL Action" series.

First and foremost, we feel we owe it to our spectators to make one or two things clear about the decision to go in for new lights.

The old lights were first installed almost 20 years ago. They were erected during the summer of 1965 and the first game at Watersheddings to be played under floodlights was the following October when we hosted one of the early under-24 internationals between Great Britain and France.

We have had 20 good years out of the original lights, but in the past few years, particularly, we have had to spend a lot of money on their maintenance and their upkeep.

Like spending a lot of money on an old car or an old washing machine, it was to some extent "throwing good money after bad" and the longer we persevered with the old lights the more they were going to cost us. In short, they were old fashioned, expensive to maintain, and inadequate in these days when a vital source of Rugby League revenue comes from sponsorship.

Television attracts sponsorship, and first-class floodlights attract television — the philosophy that led the committee to their big decision to go ahead and invest in the lights which you will see for the first time tonight.

We have heard it said that some supporters are concerned that we are spending money that should be spent on the team, but the fact of the matter is that the expenditure on the lights is not INSTEAD of new players but is designed, long-term, to help us to strengthen the team.

It is absolutely vital, in this day and age, that the club is strong commercially if it is to make real progress and we see the investment in the lights as a move which will help us bring in revenue, so that the club is able to do what everybody wants it to do — buy players.

Even if we had not bought new lights we would have had to spend considerably on upgrading the old bulbs and fittings and the new ones are, of course, guaranteed for many years ahead.

We are confident this will prove a successful commercial venture to help to augment other off-field fund-raising sources such as the social club, sponsored, the lottery, the Lifeline and the Ambassador Club.

We are also spending money on the social club to give the premises a much-needed facelift, and we are working hard on sponsorship, the lottery, the Lifeline and the Ambassador Club.

You might also have noticed that we are considering building VIP boxes in the upper part of the Hutchins stand. Again, this is being seriously considered because it is a method of bringing in the sort of revenue we need to be a successful club.

It is certainly not a case of spending money for spending's sake, but laying out some money to make a lot more money, so that we can all enjoy the long-term benefits on the field of play.

That does not mean that, short-term, we will not move in the transfer market if the right players come along at the right price. Of course we will. But our manager Frank Myler is anxious not to buy for buying's sake, but to make absolutely sure that when we do buy we go for the player or players who can complete the jigsaw successfully.

We firmly believe that our new lights will be of the highest possible standard and will certainly be the equal to any others in the Rugby League, if not better.

We are confident the TV people will be delighted at the quality of their pictures and that they will want to return to Watersheddings where they can be assured of a real Oldham welcome and a setting that will bring out the best in television.

You can, of course, watch the game from the stand or the terraces tonight and then settle down at home later on tonight to see the ITV presentation, and to make up your own mind about the quality of the new lights.

We are confident you will not be disappointed — and we are equally confident that the investment will prove a wise and sensible decision as time goes by.

SURVEYORS VALUERS ESTATE AGENTS AUCTIONEERS



2 The Market Place
Oldham OL1 1JG
Tel: 061-626 3471 (5 LINES)

AGENTS
FOR

the Leeds
PERMANENT
BUILDING SOCIETY

HALIFAX
BUILDING SOCIETY

BRANCHES AT

12/14 ROCHDALE ROAD, OLDHAM
TEL: 061-624 2875

42 HIGH STREET, LEES, OLDHAM
TEL: 061-620 2447

758 OLDHAM ROAD, FAILSWORTH
TEL: 061-681 3316

BRANCHES OPENING SOON AT

91 CHEW VALLEY ROAD, GREENFIELD

320 ASHTON ROAD, OLDHAM
061-652 7229

1062 MIDDLETON ROAD WEST, CHADDERTON
061-652 7228



Oldham Electrical
WHOLESALE LTD.

1/3 Peel Street, Chadderton, Oldham
Tel: 061-626 0990

*SUPPLIERS TO THE
ELECTRICAL CONTRACTING TRADE
AND INDUSTRY*

**EXCELLENT DELIVERY SERVICE
COMPETITIVE PRICES**

OPEN:- MONDAY- FRIDAY 8 a.m.-5 p.m. SATURDAY 8.30 a.m.-12 NOON

A WINNER AT HOME

Slalom Lager Voted the World's Best



Trade enquiries Spearhead 01-828-3443

Historical Notes on St. Helens

by Tom Webb

At a recent supporters' gathering at St. Helens, I found that some of the locals had never heard that the club had been formed by a Mr Hermann, a German who was engaged at the local gas works as a chemist. This was around 1875. Since penning that sentence, I find that it may not be quite true.

"Premier" writing in the "Rugby Leaguer" on December 31st 1948, says that Mr J. H. Houghton, the great St. Helens stalwart told him that when the Saints played in the first Challenge Cup tournament in 1896-97 the odds against them before the first round was played were 100 to 1 against them. It was a great performance to reach that first final but the great Batley team were too good for them.

The same writer tells that when Saints met Huddersfield, another wonderful team in the 1915 final, in which they were well beaten 37-3 at Watersheddings, the team stopped in Manchester for the biggest tripe supper in history. When the team stripped in preparation for the game, they thought that they would get a big bonus for reaching the final, the biggest bonus in their history. However when they put the question, "How much?", they were told they were on a good hiding to nothing.

"In that case", said one player, "there will be no match". Matching words to the action, he at once commenced to dress again. The others followed suit, all excepting Tom Barton. He went on lacing his boots. They looked at him. Barton was a born leader and he proceeded to prepare for the game.

The player who had spoken first said, "We have had nothing whatever out of this, except punches". "What do you think we have had?", retorted a member of the committee, "If we promise a bonus, where is it to come from?" "Premier" added that they did not know how to provide bigger shares for all out of nothing in those days.

"Never mind about the bonus", broke in Barton. "There's a medal waiting there, win or lose, for every man".

"Each medal is worth at least £3/3/-, and I am not going back without mine, even if I have to turn out and play the whole blooming Huddersfield bunch by myself".

He added, "These lads outside, many of whom have come from Huddersfield and a few from St. Helens, are looking for us to give them a show. The Oldham people who have come to watch the match, though they are not in it, have rolled up as well. We may have what seems a raw deal, but we can't let them down, come on".

The rest of the team donned their togs again and went out, but their spirit had gone and apart from Barton their display was about the worst ever put up by a St. Helens side.

If you wonder at the small attendance for a Challenge Cup final, it must be remembered that this was the first wartime final and people were not able to attend matches as they did before the start of the war. Many players and many, many times more spectators were overseas in the forces or training in this country.

Since then, St. Helens have made up for lost time. They won the Challenge Cup in 1956 in their fifth final appearance, again in 1961, 1966, 1972 and 1976. The club has won many more honours, championship, premiership, Lancashire Cup and Lancashire League, but so far the John Player Trophy has eluded their grasp.

One great day was November 20th 1926 when St. Helens and St. Helens Recreation met in the final of the Lancashire County Challenge Cup. The Saints won by 10-2. George Lewis with 2 goals, Ellaby and Fairclough 1 try each, scored the points and Pyke replied with a goal for the "Recs". The crowd at Warrington that day numbered 19,430 and the takings amounted to £1,192.

HERE COME SAINTS

THE SAINTS COME MARCHING IN

MENTION St. Helens these days and talk inevitably drifts around to Mal Meninga, that big, Aussie centre from Queensland, who has terrorised defences since he joined Saints early this season.

Meninga first burst onto the English scene when the Kangaroos came to Britain and conquered all before them in 1982.

He was a key member of that fabulous Australian side and he has kept his place since despite the most intense competition.

Big, strong and fast, Meninga is without doubt one of the biggest crowd-pullers in the modern game and the Knowsley Road crowds have increased impressively this season with the Brisbane policeman the No.1 attraction.

He helped Saints to win their first major trophy for some years when they beat Wigan to lift the Lancashire Cup in a thrilling final last October and he has undoubtedly played a major role in the Saints bid for a place among the Slalom Lager championship leaders.

Their hopes of a top-four place took a blow with a heavy defeat at Hull on the night Oldham lost at home to Castleford. But worse still for the Knowsley Road men was a rib injury sustained by Meninga which kept him out of last Sunday's side at Featherstone for the first time since he flew in from Down Under.

In his 21 appearances for Saints, he has scored 18 tries, so you can rest assured that the club's medical staff will have been working overtime this week to try and ensure that he can return to the line-up for tonight's televised match.

Meninga, of course, did not come alone from the other side of the world. Phil Veivers, his Queensland team mate, is also playing for Saints this season and he was impressed a lot at full-back, although he was switched to centre last Sunday at Post Office Road to fill the gap left by Meninga's injury absence.

Somewhat surprisingly, Saints have not done as well in the other knockout competitions as might be expected.

After winning the Lancashire Cup, they were fully expected to make a serious challenge for the John Player Special Trophy and the Silk Cut Challenge Cup, but they were beaten at home by Halifax in the third round of the Player's Trophy, and were desperately unfortunate to be drawn against this season's outstanding team, Hull KR, in the first round of the Challenge Cup.

After a thrilling cup-tie, Hull KR just squeezed through thanks to a late try by winger Gary Clarke, so Saints found themselves an early casualty, like Oldham, in the most prestigious knockout competition of the lot.

Like Oldham, they will now be all the more determined to do well in the race for league honours over the next few weeks. The championship is still there for the taking, though Hull KR look red-hot favourites, and then there are top-four and top-eight places to go for.

At full-strength Saints have a formidable squad. Barrie Ledger's exploits on the wing earned him a Test cap against France last Friday night and his is one of the fastest and most lethal finishers in the game.

On the other wing Sean Day has come on in leaps and bounds while playing outside Meninga and is, of course, a deadly accurate goal-kicker.

Neil Holding, who toured Australia and New Zealand last summer, needs no introduction. He is one of the best scrum-halves in the game and his pace over 20 yards is electrifying.

Youngster Steve Lea played outside-half last week, but the man who has made his name in the No.6 jersey in recent seasons in Chris Arkwright — another Saint who was originally picked for the tour, but who was withdrawn later because of a knee problem.

In the pack, hooker Graham Liptrot is one of the best football-playing hookers in the game, while he has a couple of strong props alongside him in Tony Burke, the ex-Leeds forward, and Cumbrian Peter Gorley.

Andy Platt, substitute for Britain last Friday, could be in the second-row with Roy Haggerty or Paul Round, who has developed this season into a fine, running forward.

At the back is the real brains of the Saints set-up — Harry Pinner. Like Holding, Pinner toured Down Under last summer, and his ball-playing skills and tidy football technique is an essential part of what makes the Saints tick.



**NEW TIMBER
AT THE
LOWEST PRICE**

Stockists of
TIMBER PLYWOOD
HARDBOARD WINDOWS
DOORS MOULDINGS
ROOF INSULATION

Plus all your timber requirements

O.B.

TETLEY ALES

OLDHAM RUGBY SOCIAL CLUB

Call in for a drink after the match

Full restaurant facilities 4.30 p.m. — 9.30 p.m.

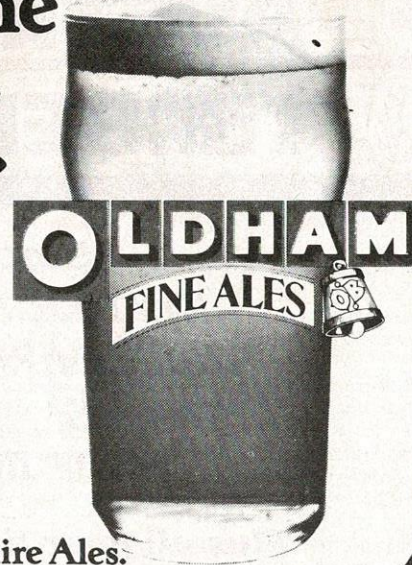
Private rooms available for weddings, etc.

Telephone: 061-624 0368

TETLEY

O.B. ALES

**After the game
have a night
on the town.**



**Oldham Brewery-
Brewers of traditional Lancashire Ales.**

QUEGHAN

pacemakers in civil engineering



**Queghan House, off Shaw Road, Oldham, Lancs.
Telephone: 061-620 2115/6/7**

Harvey Ashworth

(manchester Ltd.)

(CHAIRMAN OLDHAM RUGBY LEAGUE Football Club)
The Abattoir, River Park Road, Manchester 10
Tel: 061-223 2097

WILDBORES RADIOS LTD.

**4 HENSHAW STREET (opposite C&A's)
OLDHAM**

Tel: 061-624 7907

Branches at

76 Yorkshire Street,
Oldham

78 Yorkshire Street,
Rochdale

and
Boshers
67 High Street,
Lees

All leading makes of
video

Colour T.V. and Teletext
**Ferguson Phillips I.T.T.
and Sharp.**

*Full stock of Microwaves, Music Centres/Rack Systems and Stereo
Radio Cassettes*

LANSDOWNE IRONWORKS
WARD STREET, CHADDERTON
OLDHAM OL9 9BB
Tel: 061-624 4216. 061-652 9345

Parkcrest Engineers Ltd.

Engineers, Pattern Makers, Millwrights
Electric Lifts, Hoists & Conveyor Makers

OLDHAM CARAVAN CENTRE

Large Indoor Display of
New & Used Caravans & Awnings,
Accessories Galore, Workshops

MIDDLETON ROAD, OLDHAM, LANCs.
061-624 6755/6731

**MARTINS
MIDLAND LTD.**

PARTS SALES
 SERVICE

PARK ROAD, OLDHAM
LANCASHIRE
TELEPHONE: 061-652 7131

EXPRESS LOANS

Free Financial Service to
Home Owners & Mortgage Payers
Tenants Personal Loans, Mortgages
& Second Mortgages Arranged
Business, Industrial & Commercial
Finance
All enquiries welcome. Phone anytime

061-969 4131
64 Cross Street, Sale, Cheshire

NORTH WEST PUMP SERVICES
Unit 5 Parkside Ind. Estate
Edge Lane Street, Royton, Oldham
Supplies, Installations, Service
Petrol Pumps, New & Reconditioned
Electronic Security Systems
061-633 9533

**KICK OFF AT
SPINNERS ARMS**
LEES ROAD, OLDHAM
TEL: 624 5398

STONES BEST BITTER
Bar Snacks, Pool, Darts, etc.

JUDGE FOR YOURSELF...
the quality of our services at...

**Marshall Pump
Systems Ltd.**

Distributor and Stockist of pumps by:
JABSCO, MONO, MARCORE, GRUNDFOS
WADE, IWAKI, STUART TURNER, LUTZ
STAHOPPE, TUTHILL, WORTHINGTON
SIMPSON, HOFFMA, LEE HOWL,
MODERN

RHODES BANK, OLDHAM OL1 1UA
Telephone: 061-678 6111
Telex: 668159

**H*LTIME
travel agency**

Unit 4, Chadderton Precinct
Chadderton, Oldham, Lancs.

Tel: 061-633 6239/0

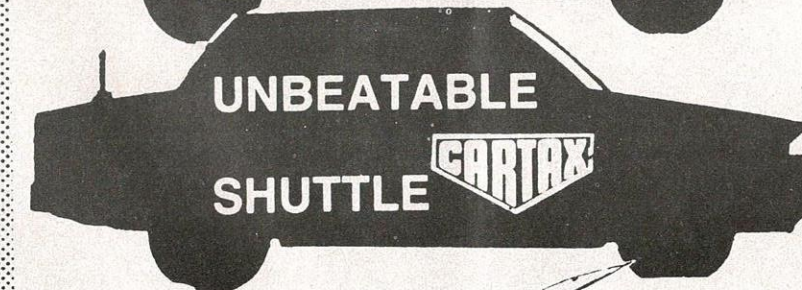
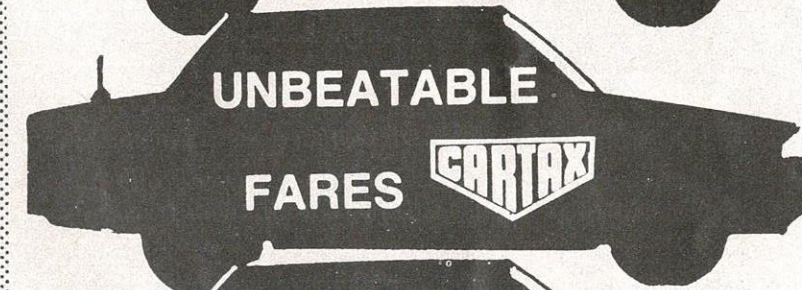
Worldwide Travel
Special offers all the year round
Excellent service from our
friendly staff

CARTAX

652 8228

PRIVATE

HIRE



RINGWAY

SHUTTLE



THE BIG THREE!

TONIGHT'S MATCH SPONSOR
WILLAND ENGINEERING

**CHADDERTON WORKS
STOCKFIELD ROAD
OLDHAM**

**TEL: 061-652 5123
061-624 8852**

T. J. GUINAN LTD.
BUILDING MATERIALS SUPPLIES
Grimshaw Lane
Middleton
Tel: 643 6148/653 4583

BRIAN BATTY Daily Mail

With the Australian season ready to get into its stride there will be plenty of interest in developments in this country.

On top of all the Australians playing over here we have a growing number of English players preparing to join clubs in both New South Wales and Queensland.

The big question in Sydney is whether Canterbury Bankstown can take the First Grade Premiership for the second successive season.

I was interested to read coach Warren Ryan's report on Canterbury's great season, having been greatly impressed with the side when I watched them on several occasions during the Great Britain tour.

Ryan makes several observations that serve to illustrate how much the defensive feature of Australian rugby is such a critical factor in planning and success.

In 1980, Canterbury in the Premiership rounds, en route to the play-offs, scored 65 tries but conceded 21 to finish with a points percentage of 108.

Last season the team, with two additional games, scored 69 tries yet allowed a mere 37 tries against for a points percentage of 183.

Ryan also points out that in 1983 a total of 1,154 tries were scored by all teams in the Premiership rounds.

'Last season only 819 tries were scored and I see no reason to doubt that the grim defensive trend will continue under the present rules', claimed Ryan.

At the same time it is interesting to note the achievements of Canterbury secretary Peter Moore, who was tour boss here in 1978 and in the last Test series against Great Britain.

Well known in this country Peter took his Canterbury club to a record income in excess of a million dollars last season while sponsorship and all types of promotions grossed over half a million dollars.

After a run of 16 years as a director he has become one of the most influential figures in the club's history, always displaying plenty of drive and enthusiasm.

Peter's son-in-law is, of course, Halifax's player-coach Chris Anderson, who had a marvellous 15-year run with Canterbury, also playing in the Wembley winning Widnes side in 1976.

Chris made a record 284 appearances and scored a record 120 tries for Canterbury, also making two tours of this country with the Kangaroos and collecting 12 Test caps.

SUPPORTERS CLUB NEWS

President: Mr. D. Blackburn, **Chairman:** Mr. D. Pilkington, **Treasurer:** Mr. T. Heywood, **Secretary:** Mrs. J. Pilkington, **Committee Members:** Miss. A. Collinge, Mrs. H. Heywood, Mrs. L. Wolstencroft, Mr. I. Pilkington, Mrs. E. Crowther, Mrs. L. Chadderton, Mr. C. Clarke, Mr. J. Gallagher, Mrs. S. Collinge, Mr. B. Doleman, Mrs. A. Doleman, Mrs. G. Doleman.

The Supporters Club would like to welcome all the Players and the Committee of our visitors from St. Helens for tonight's match. Hoping we have a good, clean and entertaining match. We would like to invite all the supporters to our canteens situated at different parts of the ground and our souvenir shop at the pavilion end and the programme shop at the waterhead end.

On Sunday 24th March 1985

HUNSLET

**£1.90 Members; £2.15 Non-Members; £1.10 Junior Reds;
£1.30 Non-Junior Reds; £1.60 Committee.
Leave Social Club at 2pm**

The Supporters Club are once again holding a **Wembley Draw**, tickets are 5p each or 50p per book (12), anyone who would like any books please enquire at canteens. The prizes are: Winners £50, Runners-up £20, Semi-Final £5 each. Other teams drawn £1 each. **This year Fun Run** is being held on Sunday 19th May 1985. Details later. Supporters Club Committee, Ladies Committee, Ex-Players are jointly holding a **Race Night** on Thursday 14th March in the Social Club. Tickets are 50p each. Please get your tickets from any of the committees.

Souvenirs in our shop are Sweaters at £10.00 each, Sweatshirts at £8.50, and juniors £6.50, Scarves (Oldham) £2.75, Ties £3.50, Lapel Badges 65p, Blazer Badges £7.50, Patches £1.00, Gloves (small and large) £1.50, Pens 25p, Red and White Shirts with Club Badges 24" to 42".

Supporters Club membership is only £1.00 per person.

Junior Reds welcome any new members so that you can act as ballboys and ball girls. Saturday morning Social Club, new sew-on badges. Contact Joe in the Social Club. Membership £1.00 as last year. A symbol on sale, see J. Gallagher (Social Club).

LIFELINE

A reminder to Lifeline and Lottery Members. We are now situated at the rear of the pavilion opposite the greyhound track. New agents required for Lifeline and Lottery, phone 626 4501.

Brand new car to be drawn for on April 8th Oldham V Wigan game during half-time period. Don't miss the chance of winning this fabulous prize, phone 626 4501.

JOIN LIFELINE NOW

For all your chemist sundries,
comsetics and toiletries

F. YATES



(Proprietor: Malcolm S. Fagelman)

831 Hollins Road
Hollinwood
Oldham

Telephone: 681 1291

Established over 50 years

KEN LEYLAND

SIGNWRITER

061-620 1056

Joe Gallagher, who runs the junior reds, is still keen to recruit more youngsters. Membership costs £1 for the season, there are regular functions on Saturday mornings, and members can get the chance to act as ball boys or girls on match days. If you are interested see Joe in the Social Club.



mitre

Gives you an unfair advantage

Mitre Sports, Bayhall Works, Birkby, Huddersfield, Yorks. UK
Tel. 0484 37488 Telex 517470

HI-WAY COMPONENTS

Suppliers of Commercial Vehicle
Components to the Trade

50 Lansdowne Road,
Chadderton, Oldham

061-652 0315

M. & B. SUPPLIES

Illuminated & Acoustic Ceilings
Theatres, Clubs, Restaurants, etc.

ALL TYPES OF JOINERY

13A RIPPONDEN ROAD

061-633 4313

DINE AT THE Prince George Hotel

(Residential)

193, Ripponden Road,
Oldham.

061-633 1328

**Excellent Food
Superbly Served**

Lunch Time 12.00 - 2.00
(Monday to Friday)

Evenings from 6.30
(Monday to Saturday)

**Wedding Breakfasts
and
Special Occasions
Catered For**

YOU'LL FIND ALL THE
OLDHAM LOCAL SPORT

IN DEPTH
IN MONDAY'S

Oldham Evening Chronicle

OLDHAM SNOOKER CENTRE

HIGHFIELD STREET

**20 Full Size Tables
Plus Match Table**

Lounge and Licensed Bar
Food

FITTED BEDROOMS AND KITCHENS
All custom built — Free estimates given
Complete design & fit service with
12 months guarantee
Samples & Catalogue available
Showrooms now open, view by appointment

ARTISTIQUE DESIGN

Tel. SHAW (2) 881284

UNIT 22, PARKSIDE ESTATE, ROYTON

FLASHBACK by Tom Webb

5 Years Ago

Sunday 9th March 1980

OLDHAM 9 WHITEHAVEN 17 (Second Division)

Oldham: Murphy, Munro, Larder, Francis, Fitzsimons (3 goals), Ashton, Gwilliam, Alexander, O'Mahoney, Hall, Herbert, Mordell, Blackwood.

Subs: Ward (try) and Hawkyard for Larder and Blackwood after 50 minutes.

Whitehaven: Dutton (3 goals), Hodson, Stewart (try), Stoddart (try), McQuire, O'Neill, Walker (2 drop goals), Rae, Barwise, Fox, Litt (try), Martin, Thompson.

Subs: Wilkinson did not play and McLean for Martin after 68 minutes.

Referee: Derek Fox (Wakefield). Attendance: 2,423. Half-time score 4-3.

10 Years Ago

Sunday 9th March 1975

OLDHAM 4 WIDNES 10 (Third round of Challenge Cup)

Oldham: Murphy, Elliott, Larder (2 goals), Wainwright, Barton, Treasure, McCone, Hughes, Taylor, McCracken, Hall, Welding, Brown.

Subs: Blair for Wainwright after 76 minutes and Reynolds did not play.

Widnes: Dutton (3 goals), Prescott, George, Aspey, Karalius, O'Neill, Bowden, Mills, Elwell, Sheridan, Adams (try), Wood, Laughton.

Subs: Foran for Wood at half-time and Ashton (drop goal) for O'Neill after 67 minutes.

Referee: Fred Lindop (Wakefield). Attendance: 11,503. Half-time score 2-2.

15 Years Ago

Friday 13th March 1970

WIDNES 25 OLDHAM 4 (League comprised of one division)

Widnes: A. N. Other (5 goals), Thompson, Hughes (try), Aspey (2 tries), A. N. Other, O'Neill (try), Ashton, Warlow, Elwell, Walsh, French, Foran (try), Nicholls.

Subs: Gaydon and Newton did not play.

Oldham: Murphy, Larder, Collins, Garrett (2 goals), Davies, Sayer, Clarke, Hopwood, Taylor, Dunn, Irving, McCormack, Churm.

Subs: Mullarkey and Standing did not play.

Referee: Gerry Kershaw (Easingwold). Attendance: 2,500. Half-time score 10-4.



Bukta Sportswear

BUKTA CLOTHING, REPLICA SHIRTS
PUMA BOOTS AND TRAINING SHOES AS WORN
BY OLDHAM R.L.F.C. ARE AVAILABLE FROM

TENCH (sports) LIMITED

☐ S4 ARNDALE CENTRE
MIDDLETON
MANCHESTER
Tel.: 061-643 7515

☐ 16 THE PARADE
SWINTON
MANCHESTER
Tel.: 061-794 0995



North West Decoiling Ltd.

Steel Stockholders
Decoilers & Shearers

Tel:
0925 415111

Telex:
627135

We can keep you warm
up EVEREST

So we can at "Sheddings"

See our range of OUTDOOR CLOTHING,
THERMAL WEAR, DUVET JACKETS,
WATERPROOF-WAXED COTTON
WEAR, BOOTS, SOCKS, GLOVES

PEGASUS SPORTS

15/17 Court Street, Uppermill
Tel: Saddleworth 70653

TRY US FOR THE RIGHT TACKLE

**FOR AN EARLY
MORNING DELIVERY
SERVICE OF MILK
& DAIRY PRODUCE**

WE HAVE
GOTTA
LOTTA
BOTTLE

**COUNTHILL
DAIRY**

THE DAIRY
ON YOUR
DOORSTEP
Tel: 633 3911

REGENT STREET,
OLDHAM.

*The Dairy That's
Proud Of It's
Service*

BOOK WITH
THE FRIENDLY ONE



**Travel
Agency**

The Market Hall,
Albion St., Oldham
Telephone: 061-652 2118/9

partington

T. Partington & Son (Builders) Ltd.
Stock Lane, Chadderton
Oldham OL9 9EZ Tel: 061-633 3951

inches

Rhodes Bank, Union Street
Oldham

**SENSATIONAL SLIMMING
AND FITNESS OFFER
ONE WEEK MEMBERSHIP**

£1

PAUL PRICE

Supplier of Quality Cars

Tel: 061- 620 3984

220 Rochdale Road, Oldham

SANOPAL DOUBLE GLAZING

Aluminium Double Glazed Windows, Patio
& Residential Doors, Sealed Units & Glass
Supplied to Trade

ALSO TRADE SUPPLIED

**Globe Works, Globe Street,
Oldham, Lancs.**

061-620 5580/665 3069

'SNAPHAPPY'

Photographic Services
**NOT ONLY 30% BIGGER BUT
100% FASTER AND
100% MORE VERSATILE**

Instant passport or I.D. Pictures available

155 YORKSHIRE STREET
RHODES BANK, OLDHAM
8 30 - 5 30 Mon. - Sat.

P. & A. CLARKE

Accident Repairs, Bodywork
Chassis Welding & Paintwork Etc.

Rear of General Motors
St. Mary's Way, Oldham OL1 1NS

Telephone: 061-652 0507
Night: 061-633 2782/061-796 7913

SMARTY'S CLEANERS

652 1500

Hillards Precinct
First off the car park

**SUPPORTERS
SPECIAL**

Same day service on Saturday
10p off with this advert.

ARMER QUALITY COMPONENTS LTD

Greenacres Road, Oldham
Telephone: 061-620 5203

Sheetmetal Workers to Electronic
and Display Trades

GEORGE HILL TIMBER

Doors

Garador

Mouldings

PLAS

**SCOTTFIELD
SAW MILLS**

**ASHTON ROAD
OLDHAM**

Telephone:
061-652 7421

Ironmongery

OLDHAM R.L.F.C. FIXTURES 1984-5

1984

SEPTEMBER

2—Hunslet (3.00)	W 32-10	H
9—Workington (2.30)	W 44- 2	A
12—Widnes (7.30)	W 18- 2	H
16—COUNTY CUP	L 26-32	
23—Leeds (3.00)	W 18-14	A
30—Leigh (3.00)	W 12- 8	H

OCTOBER

7—Barrow (2.30)	W 34-12	A
14—Warrington (3.00)	L 15-16	H
21—St. Helens (3.00)	L 5-32	A
28—Featherstone (3.00)	W 26- 8	H

NOVEMBER

4—Bradford (3.00)	W 23-14	A
11—Hull K.R. (3.00)	L 5-31	H
18—JOHN PLAYER TROPHY v York	W 22- 6	
25—Warrington (3.00)	W 18-12	A

DECEMBER

2—JOHN PLAYER TROPHY v Hull	L 14-26	
9—Barrow (3.00)	W 44- 8	H
16—Hull K.R. (3.00)	L 0-14	A
26—Widnes (3.00)	L 14-10	A

'a' team fixtures

1984 (Subject to change)

AUGUST

31—Salford	A
------------	---

SEPTEMBER

8—Workington	H
15—Carlisle	A
21—Widnes	H
27—Leigh	A

OCTOBER

12—Warrington	A
27—Featherstone	A

NOVEMBER

2—Bradford	H
9—Salford	H
20—Wigan	A
23—Warrington	H

DECEMBER

1—Carlisle	H
8—Barrow	A
14—Swinton	H
21—Widnes	A
28—Halifax	A

1985

JANUARY

5—Barrow	H
11—Bradford	A
18—St. Helens	H
25—Wigan	H

1985

JANUARY

1—Halifax (3.00)	W 24-12	H
6—Featherstone (3.30)	W 6-13	A
13—Bradford (3.00)	Postponed	
20—Castleford (3.00)	Postponed	
27—Wigan (3.00)	Postponed	

FEBRUARY

3—Hull (3.00)	L 22-10	H
10—CHALLENGE CUP	Postponed	H
17—Leigh (3.30)	Postponed	
17—Castleford (Cup)	L 8-14	H
27—Castleford (7.30)		H

MARCH

3—Leeds (3.00)	H
8—St. Helens (7.30)	H
17—Hull (3.00)	A
24—Hunslet (3.30)	A
26—Wigan (7.30)	A
31—Workington (3.00)	H

APRIL

5—Halifax (7.00)	A
8—Wigan (3.00)	H
21—Castleford (3.30)	A

FEBRUARY

2—Swinton	A
22—Featherstone	H

MARCH

7—St. Helens	A
15—Halifax	H
22—Leigh	H
30—Workington	A

HOW THEY STAND

Up to and including 24th February

	P	W	D	L	F	A	Pts
Hull KR	17	15	0	2	413	192	30
St. Helens	17	13	0	4	482	259	26
Wigan	16	13	0	3	421	238	26
Leeds	20	13	0	7	436	268	26
OLDHAM	19	13	0	6	367	251	26
Featherstone	20	10	0	10	303	298	20
Widnes	19	10	0	9	298	345	20
Bradford N	18	9	1	8	339	294	19
Hull	15	9	0	6	348	213	18
Castleford	19	8	0	11	348	322	16
Warrington	19	8	0	11	336	401	16
Halifax	18	7	0	11	324	354	14
Barrow	19	6	0	13	331	590	12
Hunslet	20	5	1	14	312	586	11
Leigh	19	5	0	14	365	489	10
Workington	17	1	0	16	145	468	2

SLALOM LAGER

THE BREW THAT SPONSORS RUGBY LEAGUE DRINK IT AT:-

THE SHEPHERDS BOY

Huddersfield Road,
Oldham

Your Hosts

COLIN & NORMA

Bar Snacks available

All the best from

Matthew Brown 

ALL THE BEST FOR 84/85

PRINCE OF WALES

Spencer Street,
Oldham.

Your Hosts

WARREN & NORMA

Bar Snacks available

All the best from

Matthew Brown 