

**WE'VE GOT THE  
TOUGHEST TEAM  
IN EUROPE.**



**T**hey make 'em tough in Oldham.  
Trucks that tackle the opposition head on and beat them hollow on our home ground.

Because they're specifically designed for British conditions: the mud and the slush, the hills and the motorways, the rules and the regulations.

That's why you'll see the Big A out in front in all sorts of tricky situations.

Seddon Atkinson. Born **SEDDON ATKINSON** in Oldham. Bred for Britain. **NOBODY CAN BEAT US ON OUR HOME GROUND.**

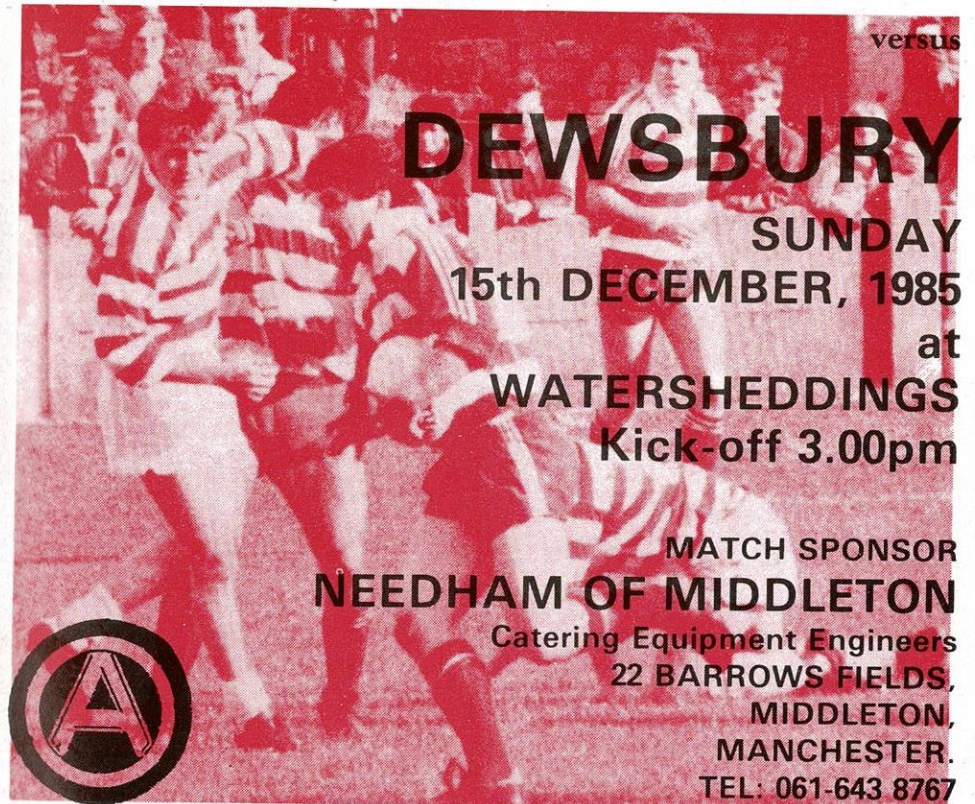


Printed by 'The Charlesworth Press', Manchester Road, Mossley. Tel: Mossley 3551  
Photoset by Richard Boyes & Co. Ltd., 47/49 Market St, Stalybridge, Ches. Tel: 061-338 5858

**Slalom  
Lager**

**RUGBY LEAGUE  
CHAMPIONSHIP  
DIVISION ONE**

**OLDHAM**



versus

**DEWSBURY**

**SUNDAY  
15th DECEMBER, 1985  
at  
WATERSHEDDINGS  
Kick-off 3.00pm**

**MATCH SPONSOR  
NEEDHAM OF MIDDLETON**

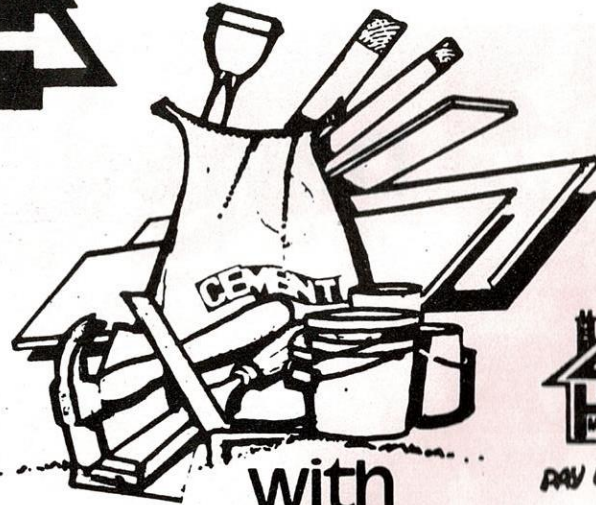
Catering Equipment Engineers  
22 BARROWS FIELDS,  
MIDDLETON,  
MANCHESTER.  
TEL: 061-643 8767



**OFFICIAL PROGRAMME 35p**

# GEORGE HILL

## Timber Wallboard & Ironmongery



PAY US A VISIT

## with Builders Merchants at Oldham

OLDHAM Scottfield Ashton Rd.  
 for TIMBER & WALLBOARD 061-652 7421  
 for BUILDERS MERCHANTS 061-626 4345  
 BOLTON Millfield Rd. Brightmet Bolton 384867  
 SALE Glebelands Rd. 061-969 7543

### OLDHAM RUGBY LEAGUE FOOTBALL CLUB OFFICIALS The Pavilion, Watersheddings, Oldham Tel: 061-652 5244 and 061-624 4865

**President:** R. Hatton  
**Chairman:** H.V. Ashworth  
**Vice-Chairman:** R. Ogden  
**Treasurer:** J. Hall

**Committee:** E. Bayliss, K. Broadbent, M.R. Greenway, R. Ogden, K. Potter, M.A. Richardson, M. Cullen

**Hon. Architects:** Hall, Needham Associates  
**Hon. Club Solicitor:** A.J. Adler  
**General Manager:** F. Myler  
**Hon. Secretary:** F. Howarth, B.A.  
**Coaching Staff:** B. Gartland

#### Professional Playing Staff

A. Alexander, R. Ashton, K. Atkinson, I. Birkby, A. Bishop, B. Caffery, L. Casey, L. Chadwick, C. Chisnall, L. Cook, S. Dobb, J. Edwards, T. Flanagan, D. Foy, C. Hawkyard, D. Hobbs, C. Jones, W. Jones, P. Kirwan, P. Lord, P. Lowndes, A. McCurrie, R. Marsden, M. Morgan, P. Morris, A. Morrison, G. Munro, T. Nadiole, D. Nicholson, S. Ogburn, T. Ogden, G. Owen, M. Parrish, S. Patterson, I. Sanderson, P. Sherman, A. Taylor, M. Taylor, D. Topliss, G. Walczak, M. Worrall.

**Hon. Consultant Orthopaedic Surgeons:** Mr. H. Thompson, Mr. D. Walker  
**Dental Surgeon:** Mr. N. Gibbison  
**Physiotherapist:** Mr. A. Bonnelle : **Asst. Physiotherapist:** Mr. J. Watkins  
**Commercial Managers:** J.B. Bostock, M. Morgan  
**Social Club Manager:** J. Gallagher : **Groundsman:** J. Walker  
**Asst. Groundsman:** W. Caine : **Official Time Keeper:** J. Roscoe

#### CLUB RECORDS

Record victory 67-6 against Liverpool City, April 1959  
 Record defeat 11-67 by Hull K.R., September 1978  
 Record attendance 28,000 v. Huddersfield, February 24th 1912  
 Record receipts £9,100 v. Wakefield, 24th February 1980  
 Record transfer fee paid £40,000 to Featherstone for David Hobbs, February 1985  
 Record transfer fee received  
 Record try scorer Reg Farrar, 49 tries, 1921/22 season  
 Record goal scorer Bernard Ganley, 224 goals, 1957/58 season  
 Record point scorer Bernard Ganley, 28 points v. Liverpool City, April 1959  
 First game October 21st, 1876 v. Stalybridge  
 Highest number of points scored Bernard Ganley, 2,881  
 Most appearances Joe Ferguson, 685  
 Most tries Pre 1900, Jack Hirst, 233. Since 1900, Alan Davies, 182

#### CLUB HONOURS

Rugby League Championship Play-off winners: 1909-10, 1910-11 and 1956-57  
 Runners-up: 1906-07, 1907-08, 1908-09, 1921-22 and 1954-55  
 First Division Champions: 1904-05  
 Second Division Champions: 1963-64 and 1981-82  
 Rugby League Challenge Cup Winners: 1898-99, 1924-25 and 1926-27  
 Runners-up: 1906-07, 1911-12, 1923-24 and 1925-26  
 Lancashire Cup Winners: 1907-08, 1910-11, 1913-14, 1919-20, 1924-25, 1933-34, 1956-57, 1957-58 and 1958-59  
 Runners-up: 1908-09, 1911-12, 1918-19, 1921-22, 1954-55, 1966-67 and 1968-69  
 Lancashire Championship Winners: 1907-08, 1909-10, 1921-22, 1956-57 and 1957-58  
 Runners-up: 1908-09, 1910-11, 1911-12, 1919-20, 1923-24 and 1954-55  
 Lancashire Shield Winners: 1975-76 and 1979-80  
 Colts Premiership Trophy: 1979-80

# WATERSHEDDINGS SURVEY

IT was gratifying for all connected with the Oldham club when we learned that the players had been awarded the Daily Mirror/Lada Cars team-of-the-month award at First Division level for November.

The award, presented to us before last Sunday's game against Salford, is worth £250 and a framed citation as well as immense prestige value in that it shows that our efforts have been recognised by a totally impartial panel of judges.

We went undefeated through November and we like to think that all our fans and supporters, sponsors and backers, were still solidly behind us when the unbeaten run came to an end with a narrow 8-7 defeat in the second round of the John Player Special Trophy at Hull K. R.

There are still three major competitions open to us — the Slalom Lager championship, the Slalom Lager premiership and the big one that ends at Wembley in May.

If we can keep our form going we must be in with a chance of picking up some silverware this season with a side which, most believe, is the best all-round team we have had for many years.

It is sad that we have such a difficult financial situation to cope with. Thankfully, people are rallying round, both individuals who are coming forward with offers of help, and organisations such as the Supporters' Club, who funded the new blazers and trousers for the players and have now come up with a more-than-welcome £1,500 to help us along the way.

We are grateful to everyone who is chipping in, whether you are buying a 25p lottery ticket, joining the £2-a-week Lifeline, or taking up the four-tickets-for-£10 scheme which enables you to use the tickets at any home league game for the rest of this season.

People taking up this scheme will take part in a free Christmas Draw to be funded by members of the committee. It is still not too late to buy the four tickets as a Christmas present and take your place in the free draw. Hurry!

We are grateful also to those friends of the club who have come forward with interest-free loans to offset the bank overdraft, and to all those who supported the £1 Christmas Draw for nine gallons of beer and those who bought the 20p correct score tickets which we had on sale for the first time at the Salford match.

Another fund-raising venture we have devised is the sponsorship individual players at each home game.

If you fancy a go at any of the remaining home matches this season this is how you go about it. Give in your name and address to Frank Myler, Les Bostock or Mick Morgan. In the week before each home match 15 sponsors go into a hat to decide which sponsor is linked up on the day with which player.

Cost of the sponsorship is £25 which nets £375. In return for his £25, the sponsor gets two stand tickets for the match, entry to the players' tea room after the game, and the chance of winning a £75 prize if his player scores the first Oldham try.

If Oldham do not score a try, a draw will decide which sponsor picks up the cash prize which, when deducted from the net 'take', will leave a £300 profit per game so long as all 15 players are backed on each occasion.

If you perhaps feel that all you ever hear about is the need to raise money, that is so. But only because we want to give YOU, our loyal fans, the best team we can possibly put on the meadow.

All the leading teams in the First Division are now buying up top stars from all over the rugby world — Australia, New Zealand, and now there is talk of South Africans coming over here to follow in the footsteps of such celebrated South Africans of the past like Tom Van Vollenhoven, Freddie Griffiths, Len Killeen and Jan Prinsloo.

John Winton, who came to Oldham for a spell from the Wigan club, was another South African who made a name for himself in the English game.

Several clubs have been linked with these South African players, which merely goes to show that if we are to keep pace with the leading lights in the Rugby League we must provide the club with the best possible injection of cash at all times.

Money talks in Rugby League as in all walks of life ... and the one commodity we are short of at present is money.

With a concerted effort all round, however, we can tackle the problem with hope in our hearts, and endeavour to show that next season, as this, our members' club can take on and beat the best.

BE SURE! QUALITY, QUANTITY AND PRICE FROM

# AUSTIANS FOR TIMBER

HEAD OFFICE: SHAW ROAD, OLDHAM  
TELEPHONE: 061-652 5421/2

TIMBER, PLYWOOD, HARDBOARD, BLOCKBOARD  
DOORS, MOULDINGS, MANY OTHER LINES

### BRANCHES AT

**SALE**  
Glebelands Road  
Sale  
061-973 9578

**OLDHAM**  
Cromford Street  
Oldham  
061-620 2128

**MANCHESTER**  
Oldham Road  
Ancoats  
061-834 8505

**BURY**  
Bright Street  
Bury  
061-761 6416

**ROCHDALE**  
Crawford Street  
Rochdale  
Rochdale 47208

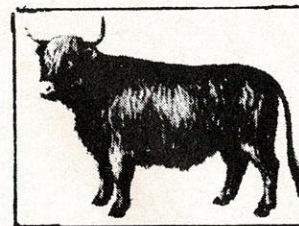
**ASHTON**  
Oxford Street East  
Ashton-u-Lyne  
061-308 3746

# HARVEY ASHWORTH

## MANCHESTER LTD.

### WHOLESALE BUTCHERS

STALL No. 25 - 26  
THE ABATTOIR,  
RIVER PARK ROAD,  
MANCHESTER M10.  
Telephone: 061-223 2097



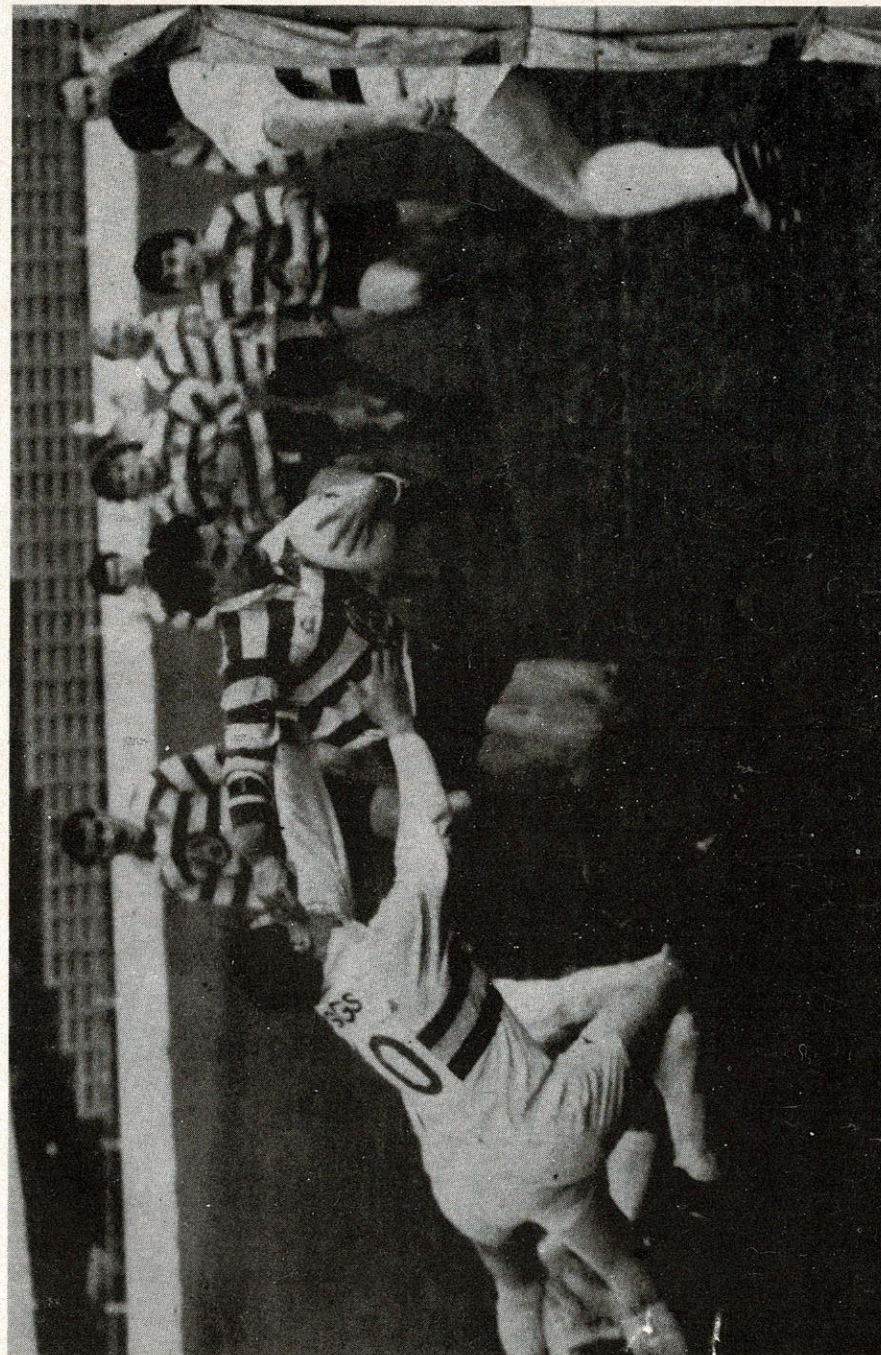
# WE ARE THE CHAMPIONS

## AWARD WINNING LAGERS FROM THE SLALOM TEAM.

- 1976 BREWEX CHALLENGE CUP. Slalom Lager – voted best overall lager.
- 1976 BREWEX GOLD MEDAL. Slalom Lager – voted best draught lager Class I
- 1978 B.B.I. AWARDS SILVER MEDAL & DIPLOMA. Slalom Lager – for bottled lager.
- 1978 B.B.I. AWARDS GOLD MEDAL & DIPLOMA. Slalom D – voted best bottled lager – Diat Beer Class.
- 1978 B.B.I. AWARDS GOLD MEDAL & DIPLOMA. Slalom D – voted best bottled lager – Extra Strong Class.
- 1980 BREWEX SILVER MEDAL. Slalom Lager – for draught lager.
- 1982 B.B.I. AWARDS SILVER MEDAL & DIPLOMA. Slalom Export Lager.
- 1983 BREWEX BRONZE MEDAL. Slalom D draught lager.
- 1983 BREWEX CHALLENGE CUP WINNERS. Voted best international bottled lager.
- 1983 BREWEX MEDAL AND DIPLOMA. Slalom Lager – Best in Class One for bottled lager.
- 1983 B.B.I. AWARDS GOLD MEDAL. Slalom Lager – First in Class for bottled lager.
- 1983 B.B.I. AWARDS SILVER MEDAL. Slalom D – for bottled lager.
- 1983 B.B.I. AWARDS DIPLOMA OF EXCELLENCE. Slalom International Strong Lager – for bottled lager.
- 1983 B.B.I. AWARDS DIPLOMA OF EXCELLENCE. Slalom D – for bottled lager.
- 1983 B.B.I. AWARDS DIPLOMA OF EXCELLENCE. Slalom Lager – for packaging and bottle dress.
- 1984 MONDE SELECTION MADRID. Gold Medal with Palm Leaves and Certificate. Slalom International – for bottled lager.
- 1984 MONDE SELECTION MADRID. Gold Medal and Certificate. Slalom D – for bottled lager.
- 1984 MONDE SELECTION MADRID. Gold Medal and Certificate. Slalom Lager – for bottled lager.



Matthew Brown PLC PO Box 5 Lion Brewery Blackburn  
BB1 5NH Telephone: (0254) 52471 Telex 635769  
Brewers and contract bottlers.



Gary Warnecke – Showing again against Bradford what an exclusive player he is. Gary has played in 4 positions since his arrival and has proven more than a handful for the best of defences.

## WELCOME TO DEWSBURY

### HERE COME DEWSBURY

DEWSBURY, today's visitors to Watersheddings, earned promotion at the end of last season and, like all promoted clubs, are finding life hard in the top flight.

They have produced some good performances and some good results, as most teams do at some time or another, but what most find hard on winning a place in the First Division is to attain the level of consistency needed to do well at this level week in and week out.

We are seeking a league double today, having won comfortably at Crown Flatt a few weeks ago, but we will be taking nothing for granted.

Dewsbury have one of their longest-serving players at full back in Don Richardson, who is in his ninth season with the club, having been signed nearly a decade ago from Hunslet juniors.

His consistency and loyalty was rewarded last season when he won a good service award promoted by the 'Open Rugby' magazine.

Chris Vasey, normally a stand-off, has been playing on the wing in more recent times and has benefitted from a season in Australia.

You can pair any two centres from three, although it is almost certain that New Zealander Chris Mita will occupy either the No. 3 or No. 4 jersey. He is in his second season with the club, having earned himself a big reputation last season in the Second Division.

Former Dewsbury Celtic player Billy Collins and the huge Andy Cooper, at 6ft. 1in. and 14st., similar in build to our own Mick Parrish, will be fighting for the other centre spot.

Cooper has come from colts football and is rated as a player who has a good future ahead of him.

Adrian Ramsden, formerly of that productive Rugby League nursery St John Fisher, is fancied for the left-wing spot.

Veteran Nigel Stephenson played at stand-off against David Topliss when we won at Crown Flatt, but it could be that Paul Shuttleworth, injured at that time, will be in the No. 6 jersey today.

Shuttleworth has returned to the West Riding after four seasons with Salford. He has had a six-week injury lay-off, but he came successfully through an 'A' team test the other night and could be back in the reckoning today.

Mark Keyworth, Dewsbury's remarkably consistent player of the season for the past two years, was at scrum-half in the clash at Crown Flatt.

However, he could face a challenge from David Sefuiva, a tiny Maori of only 5ft. 4in., who has been turning in some impressive displays of late and won a player-of-the-month award in New Zealand last summer.

Up front, Dewsbury have plenty of experience in Nigel Stephenson and David Busfield, though the latter has had some problems with a knee injury and he may not be available today.

Busfield, a vastly experienced campaigner, captained Dewsbury from the front-row when we met last time, but his injury could let in two men from Down Under in Steve Howells, a New Zealander who was judged to have been unlucky to miss out on selection for the recent Kiwi tour, and Les Haynes, an Aussie who plays for New South Wales country club Lythgoe Shamrocks, and who scored a try for a country team against the the 1984 Great Britain tourists.

(Continued on page 9)

**LIFE LINE**  
MEMBERSHIP OPEN  
PLEASE CONTACT  
LES BOSTOCK — MICK MORGAN  
626 4501

# QUEGHAN

## pacemakers in civil engineering



Queghan House, off Shaw Road, Oldham, Lancs.  
Telephone: 061-620 2115/6/7

**We can keep you warm  
up EVEREST**

**So we can at "Sheddings"**

See our range of OUTDOOR CLOTHING,  
THERMAL WEAR, DUVET JACKETS,  
WATERPROOF-WAXED COTTON  
WEAR, BOOTS, SOCKS, GLOVES,  
SWEATERS, HATS,  
THERMOFLEECE JACKETS

**PEGASUS SPORTS**

15/17 Court Street, Uppermill  
Tel: Saddleworth 70653

TRY US FOR THE RIGHT TACKLE

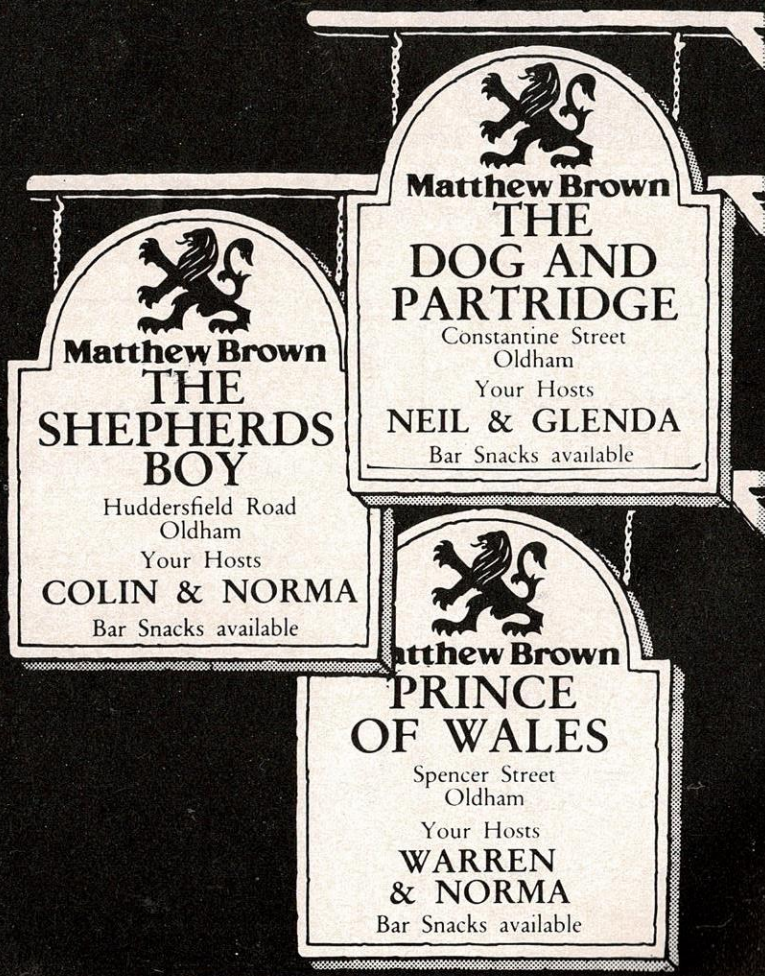
**Hollinwood  
Travel Bureau**

688 Manchester Road,  
Hollinwood, Oldham  
Tel: 061-681 1859  
Tel: 061-682 6988

For all your worldwide  
travel needs.  
Computerised Bucket Shop  
Airline Fares.  
ABTA 35207.

# Matthew Brown

## Brewers of traditional beers for over 150 years



# BRIAN BATTY Daily Mail

Rugby League players and officials must have enjoyed a quiet smile recently at further claims from Union players that it is time their code turned professional.

The big surprise for the League people was that such a step should be pushed by former Wales captain Eddie Butler.

Over the years the stories of Union players from the valleys receiving payments — the cash in the boot system — became legend.

The many Union stars who turned pro with League clubs have all been able to recall the times when money was forthcoming for big Welsh club matches.

Then, of course, there have been those remarkable revelations from time to time of huge expenses paid out for different games.

But now we have Butler claiming: 'It is high time that top British players were paid.

'Everyone is making money out of the game except the players. In my opinion it is imperative that British Rugby pays its players if it is to catch up with the rest of the rugby playing world.

'I see nothing wrong with international players in Britain and Ireland being paid a match fee of say £200 to play for their country.

'Anyway, most of that could be regarded as legitimate expenses. The modern player makes enormous sacrifices.

'To him the old fashioned concept about the gentleman players doing it for the honour of his country is slightly obscene given the vast sums of money international rugby is attracting.

'A figure of £200-per-man for an international team, plus six reserves works out at £4,200 out of a gate of £350,000. That's nothing.'

We know lots of players in Union have been able to secure good professional jobs because of their playing ability but this latest outburst will send shivers down the spines of some officials at Twickers.

They had enough trouble as it was sweeping all those stories about players getting money for wearing sponsored boots under the carpet.

How much longer can they go on trying to kid people that their sport justifies its 'amateur' tag?

(Continued from page 6)

Local junior Keith Mason will probably be at prop with Tony Diskin at hooker and Neil Kelly, brother of Hull KR's £60,000 man Andy Kelly, in contention for a place either at No. 10 or in the second-row.

The two overseas men will be in the running for second-row places with the likelihood of Nigel Stephenson packing down last at loose-forward.

Stephenson has played most of his recent rugby at No. 13, although he was switched to his original stand-off spot when we played at Dewsbury because of the threat from our own experienced No. 6, David Topliss.

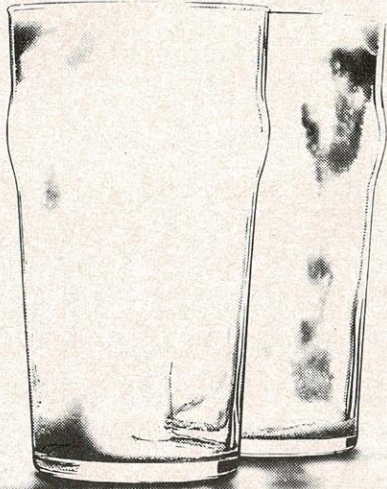
That could happen again today, though if Shuttleworth is fit it is more probable that Stephenson will be seen in the forwards.

His value as an experienced play-maker in the middle of the field was underlined recently when Rochdale Hornets made a surprise move for his services.

The snag was that Stephenson is only on loan to Dewsbury from the Wakefield club, so the move to Rochdale broke down.

It shows, though, that Stephenson is not a man to be regarded lightly even in the twilight of his splendid career.

# DOWN'EM



OLDHAM  
FINE ALES



*The taste of  
the town*

## J. W. BUCKLEY LTD.

The Square  
UPPERMILL  
Saddleworth  
2175

Craftsmen Bakers  
and Confectioners

OUTSIDE CATERING  
OUR SPECIALITY  
(over 20 years experience)

Retail and Wholesale



Bakers of English and Continental Breads  
Health High Fibre Wholemeal

ALL PRODUCE DAILY IN OUR VILLAGE  
BAKERY

Everything from Eccles — Wedding Cakes

also at

2 New Street, Saddleworth 2858

## Cheshire Produce Company

Main agents for  
CARMEL PRODUCE OF ISRAEL

**Carmel**  
Produce of Israel

No. 1 in the North West  
for quality and service

Leading suppliers of Fresh Fruit and  
Vegetables to the Catering Industry  
wish Oldham R.L.F.C. every success

Daily delivery service throughout  
Lancashire and Cheshire

NEW SMITHFIELD  
WHOLESALE MARKET,  
MANCHESTER

Tel: 061-223 1898 (Nine Lines)

Night Shift Manager:

061-223 9525

## SUPPORTERS CLUB NEWS

**President:** Mr D. Blackburn. **Chairman:** Mr D. Pilkington. **Vice-Chairman:** Miss A. Collinge. **Treasurer:** Mr T. Heywood. **Secretary:** Mrs J. Pilkington. **Committee Members:** Gary Bown, Mrs L. Chadderton, Mrs S. Collinge, Mrs E. Crowther, Mr S. Doran, Mr J. Gallagher, Mrs H. Heywood, Mrs M. Morgan, Mr I. Pilkington, Mr M. Pilkington, Mrs D. Pilkington, Julie Sagar, Mrs L. Wolstencroft.

The Supporters Club and Committee would like to welcome all the players and officials of Salford to today's match, hoping we have a good clean and entertaining game. Also we invite the supporters to our Canteens and Souvenir Shop situated at different parts of the ground.

The Souvenir Shop at the Pavilion End of the ground has sweaters, sweatshirts, ties, badges, pens etc. The programme shop is situated near the scoreboard in the old bar.

The Supporters Club are once again holding their Christmas Eve Social and New Years Eve Family Social in the Social Club. Anyone wishing to attend these will they please give their names to Mrs J. Pilkington as soon as possible as tickets are limited.

We would like to thank Mrs Fay Bowden for today's After the Match Raffle Prize and anyone who would like to donate a prize to a match will they please put their names on the match list on the notice board in the Social Club.

The Supporters Club subscriptions are now due. Come and join the Supporters Club membership £1.00 (including diary). Please pay at any canteen. Also to all our Junior Reds, their membership to Mr J. Gallagher in the Social Club.

## TEAM OF THE MONTH

To: — F. Myler, Staff and ALL Players

The committee wish to congratulate all involved in the Magnificent TEAM EFFORT in bringing the DAILY MIRROR — LADA CARS TEAM AWARD to this club for the FIRST TIME in the FIRST DIVISION.

May you succeed again.

PROGRAMME SPONSOR



**SALFORD  
AUTOMATICS LTD**

FRANKLIN IND ESTATE, FRANKLIN ST  
OLDHAM OL1 2AX

Tel: 061-665-2760/061-678-8057

**TEAM  
SPONSOR  
COMPUTATILL  
43 CHADDERTON  
WAY  
OLDHAM  
TEL: 652 8006**

**OLDHAM Players Sponsors**

- |                    |   |
|--------------------|---|
| 1. Paddy Kirwan    | 1. T. Graham  |
| 2. Hussan M'Barki  | 2. G.S. Watts—Newsagents                              |
| 3. Des Foy         | 3. G. Pache—North West Decoiling                      |
| 4. Gary Warnecki   | 4. E. Mellor—Parkfield Hotel                          |
| 5. Mike Taylor     | 5. Topliss and King                                   |
| 6. David Topliss   | 6. Noel Brady   |
| 7. Ray Ashton      | 7. A.J. Adler, Lib.                                   |
| 8. Wally Jones     | 8. Keith Broadbent—Medlock Building<br>Co. Ltd.       |
| 9. Ian Sanderson   | 9. Ray Hill—Butchers, Ripponden Road                  |
| 10. Mick Morgan    | 10. Jim Russell, BCC.                                 |
| 11. Mal Graham     | 11. Eric Buckley—Service Mouldings                    |
| 12. David Hobbs    | 12. Ted Turner—Prince George Hotel,<br>Ripponden Road |
| 13. Terry Flanagan | 13. Sanopal, Globe Street                             |
| 14. T.B.A.         | 14. Keith Potter—North West Storage                   |
| 15. T.B.A.         | 15. C. Whitehead—Shepherd's Boy                       |

Today's *Mitre*  
Matchball donated by

**NATIONAL & PROVINCIAL  
BUILDING SOCIETY**  
24 Yorkshire Street,  
Oldham OL1 1TL  
Tel: 061-620 2878

**Referee:**  
J. Huldsworth (Leeds)  
**Touch Judges:**  
D.B. Norbury, B. Wilkinson



SUPPLIES TO OLDHAM R.F.C.

**CARTAX**

**652 8228**

PRIVATE

HIRE

**DEWSBURY**

1. Don Richards
2. Chris Vasey
3. Mick Collins
4. Chris Mita
5. Andrew Ramsden
6. David Sefuiva
7. Mark Keyworth
8. Keith Mason
9. Tony Diskin
10. Paul Broxholme
11. Geoff Leary
12. Paul Jennings
13. Nigel Stephenson
14. Les Haynes
15. Steve Howells

MATCH SPONSOR

**NEEDHAM OF MIDDLETON**

22 BARROWS FIELDS, MIDDLETON, MANCHESTER

TEL: 061-643 8767

WISH OLDHAM R.L.F.C. AND SUPPORTERS  
A HAPPY CHRISTMAS AND A SUCCESSFUL NEW YEAR



## **PRINCE GEORGE HOTEL**

193 Ripponden Road,  
Watersheddings,  
Oldham  
061-633 1328

GOOD FOOD  
LUNCH & EVENINGS  
BAR SNACKS, LUNCHES  
and A LA CARTE  
(PARTIES CATERED FOR)

**TRIP TO THE RACES  
START WITH A MAN-SIZED  
BREAKFAST**

## **KEN LEYLAND**



### **SIGNWRITER**

**061-620 1056**

## **North West Decoiling Ltd.**

Steel Stockholders  
Decoilers & Shearers

Tel:  
**0925 415111**

Telex:  
**627135**

## **FARRARS ARMS**

*Grasscroft*  
**Tel. No. 04577 2124**

**BUSINESS LUNCHES DAILY**  
12-2.00 p.m.

**BED AND BREAKFAST**

**Your Hosts:**  
**Frank and Linda Marshall**

***Wilson's Traditional Ales***  
***By Hand Pump***



All shaken up — that; David Liddiard when he was helped off the field at Bradford following a late tackle. David has since been sent off in the John Player Tie at Hull KR. For a tackle which when shown on video proved to be a hard but fair tackle. Last week David sustained a broken jaw from a late tackle. When will Referees learn to get it right?



# ACE SPORTS

## Saddleworth & Mossley

**A** FULL RANGE OF SPORTS GOODS AND EQUIPMENT TO SUIT ALL NEEDS.

**C**OMPETITIVE SUPPLIERS OF LEADING BRANDS IN TEAM KIT, BOOTS AND TRAINING SHOES.

**E**NGRAVERS AND SUPPLIERS OF TROPHIES, MEDALS, SHIELDS AND CUPS.

Screen, Flock Printing and Embroidery Service Available on Sweaters, Tee-Shirts, Ties and Sweatshirts.

93 Chew Valley Rd  
Greenfield  
Sadd. 2515

NIGHT  
TIME  
061-652 5794

10a Stamford Street  
Mossley  
Mossley 2567

10% Discount on Production of this Programme

SURVEYORS VALUERS ESTATE AGENTS AUCTIONEERS



2 The Market Place  
Oldham OL1 1JG  
Tel: 061-626 3471 (5 LINES)

AGENTS  
FOR

**the  
Leeds  
PERMANENT  
BUILDING SOCIETY**

**HALIFAX  
BUILDING SOCIETY**

### BRANCHES AT

12/14 ROCHDALE ROAD, OLDHAM  
TEL: 061-624 2875

42 HIGH STREET, LEES, OLDHAM  
TEL: 061-620 2447

758 OLDHAM ROAD, FAILSWORTH  
TEL: 061-681 3316

### BRANCHES OPENING SOON AT

91 CHEW VALLEY ROAD, GREENFIELD

320 ASHTON ROAD, OLDHAM  
061-652 7229


1062 MIDDLETON ROAD WEST, CHADDERTON  
061-652 7228

# RUGBY LEAGUE SHOP WINDOW

PUBLICATIONS	Price	Postage & Package	LEISURE WEAR	Price	Postage & Package
Rothmans Rugby League Yearbook			Rugby League Jumpers: Navy or Black		
1985-86	£9.95	+ £1.00	New "Rugby League" symbol		
1984-85	£7.95	+ £1.00	36"-48"	£11.00	+ £1.00
1983-84	£6.95	+ £1.00	"RL" symbol 36"-48"	£11.00	+ £1.00
1982-83	£4.95	+ £1.00	Sweatshirts		
1981-82	£4.50	+ £1.00	Silver Grey/Navy contrast and stripe		
Rugby League Review by Paul Fitzpatrick			sizes Small/Large/Ex. Large	£8.50	+ £1.00
1984-85	£5.95	+ £1.00	White with black "RL" symbol	£6.00	+ £1.00
1983-84	£4.95	+ £1.00	Ties: Blue or Maroon "RL" symbol	£4.00	+ 30p
1982-83	£4.95	+ £1.00			
The Story of Rugby League by Keith Macklin	£5.95	+ £1.00	<b>MISCELLANEOUS</b>		
The Roots of Rugby League by Trevor Delaney	£4.95	+ £1.00	Car Badge (hand painted)		
Who's Who in Rugby League	£3.95	+ £1.00	grille/bumper	£10.00	+ 50p
Sportviewers Guide to Rugby League	£3.95	+ £1.00	Nylon holdall	£5.50	+ £1.50
Rugby League Coaching by Alan Bancroft	£3.75	+ 75p	Tea towel	£2.50	+ 25p
The Rugby League Coach by Les Bettinson	£3.00	+ 75p	Block of Notepaper	£2.00	+ £1.00
Coaching Rugby League by Ray French	£3.00	+ 75p	Pen "RL" symbol	£1.95	+ 25p
Hardback	£5.25	+ 50p	Autograph Book	£1.00	+ 50p
Softback	£2.00	+ 30p	Sun Visor	£1.00	+ 20p
Rugby League Skills by Phil Larder	£2.50	+ 50p	Woven Badges: Oval	60p	+ 20p
Official Guide 1985-86	£3.50	+ £1.00	Oblong	30p	+ 20p
John Player Special Diary 1985-86	£2.95	+ 50p	Car Stickers		
Cumbria Rugby League Annual 1985-86	£1.00	+ 25p	Great Britain	25p	+ 20p
Rugby League Lions Tour 1984 by			Rugby League	25p	+ 20p
Ray French	£4.95	+ £1.00			
Laws of the Game	£1.00	+ 30p	** Programme list on request		
In the Middle by Sam Shepherd	75p	+ 30p			
Open Rugby Magazine (monthly)	80p	+ 20p			
Slalom Lager Guide to Grounds 1985-86	50p	+ 20p			
<b>GREAT BRITAIN</b>					
Whitbread Trophy Test Sweaters Maroon					
(38"-46" chest)	£14.95	+ £1.00			
Ties: new symbol	£4.00	+ 25p			
Beany Hats	£1.95	+ 30p			
Leather tob key ring	£1.75	+ 25p			
Pen	95p	+ 25p			



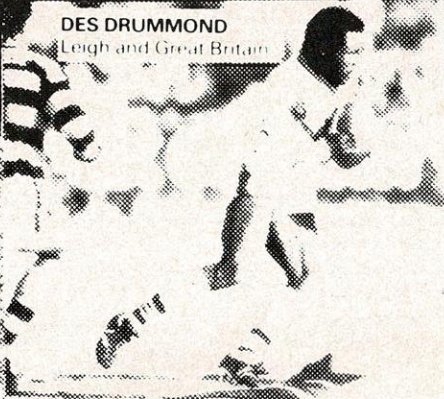
Please send order and remittance to:  
The Public Relations Department, The Rugby Football League,  
180 Chapeltown Road, LEEDS LS7 4HT  
Prices from November 1985

**RL** *mitre*<sup>®</sup> 

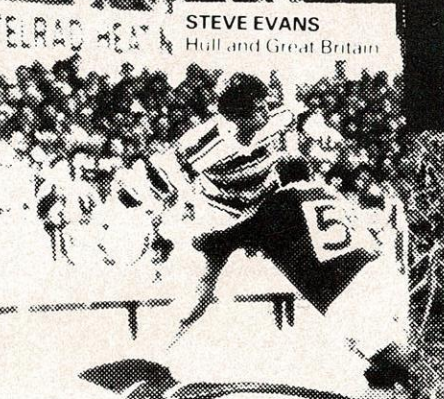
# & RUGBY LEAGUE


## ...A GREAT BRITISH TRADITION!

**DES DRUMMOND**  
Leigh and Great Britain

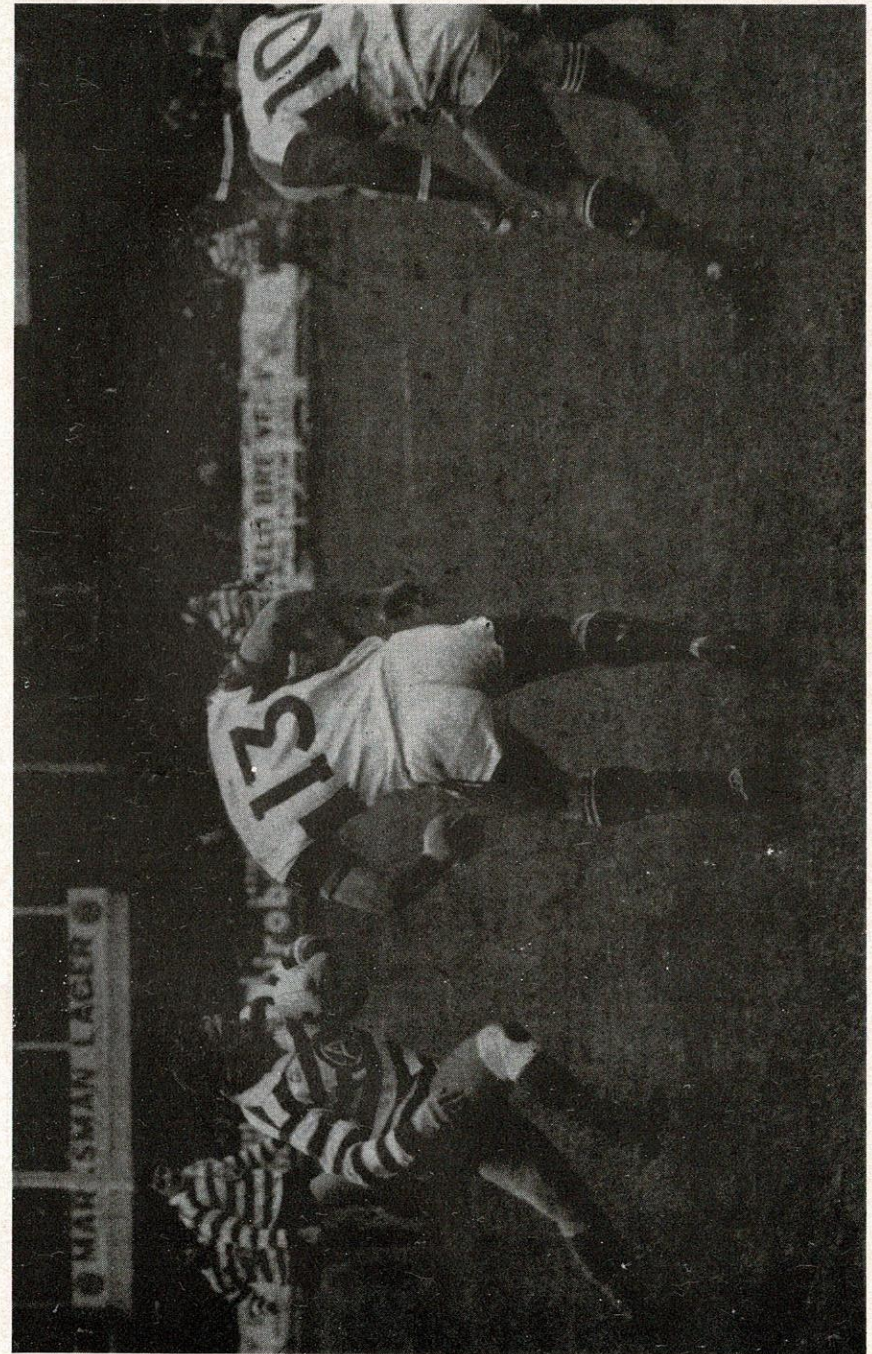


**ELRAD WEST** **STEVE EVANS**  
Hull and Great Britain





Available from leading sports retailers -  
for further information contact Mitre Sports on 0484 37488



Wally Jones goes on a typical run in the cup tie at Hull KR.

## ROYAL HOTEL

282 Rochdale Road,  
Oldham

Tel. No. 061-624 6404

GOOD TRADITIONAL  
HOME COOKING

Lunchtimes and Evening  
12-2.30 p.m., 5.30-9.45 p.m.

Monday to Saturday  
(Except Tuesday)

Sunday Lunch:

12 noon to 1.30 p.m.

WILSONS TRADITIONAL ALES  
ON HAND PULLS

Barbara and Joe Whitehead  
Welcome You All

## STAR INN

SCOUTHEAD,  
TEL: 04577 4576

BAR MEALS, SNACKS  
TUESDAY - SUNDAY

LUNCHTIMES & EVENINGS

WILSONS TRADITIONAL ALES  
PAR EXCELLENCE

Hilda and Alan Inglis  
Welcome You

JUDGE FOR YOURSELF...  
the quality of our services at...

## Marshall Pump Systems Ltd.

*Distributor and Stockist of pumps by:*  
JABSCO, MONO, MARCORE, GRUNDFOS  
WADE, IWAKI, STUART TURNER, LUTZ  
STAHOPE, TUTHILL, WORTHINGTON  
SIMPSON, HOFFMA, LEE HOWL,  
MODERN

RHODES BANK, OLDHAM OL1 1UA  
Telephone: 061-678 6111  
Telex: 668159

YOU'LL FIND ALL THE  
OLDHAM LOCAL SPORT

IN DEPTH  
IN MONDAY'S

## Oldham Evening Chronicle

Tel: 633 2121

Dorothy and Dan Ferguson  
Welcome You All To

## SPOTTED COW

West Street, Oldham

Bar Snacks  
Lunchtimes & Evenings

## CROWN

Walsh Street, Oldham

Bar Snacks - Lunchtimes

## GREENACRES

Greenacres Road, Oldham

Bar Snacks  
Club Room Available  
Parties Catered For

Wilson's Traditional Ales

## NAVIGATION

Manchester Road,  
Hollinwood, Oldham

BAR SNACKS AVAILABLE  
LUNCHTIMES & EVENINGS

*Wilson's Traditional Ales  
on Hand Pumps*

Maureen and Derek Heap  
Welcome You All

## THE OLD ORIGINAL

Scouthead, Nr. Oldham  
Tel: 04577 4412

GOOD FOOD

Lunchtimes & Evenings

*Wilson's and Websters Ales*

Peter and Vera Marner

FOR AN EARLY  
MORNING DELIVERY  
SERVICE OF MILK  
& DAIRY PRODUCE

WE HAVE  
GOTTA  
LOTTA  
BOTTLE

## COUNTHILL DAIRY

THE DAIRY  
ON YOUR  
DOORSTEP

Tel: 633 3911

REGENT STREET,  
OLDHAM.

*The Dairy That's  
Proud Of It's  
Service*

For all your chemist sundries,  
cosmetics and toiletries

## F. YATES

### NUMARK CHEMIST

(Proprietor: Malcolm S. Fagelman)

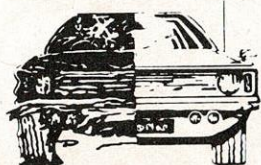
831 Hollins Road  
Hollinwood  
Oldham

Telephone: 681 1291

Established over 50 years

# ADAMSONS CRASH REPAIR CENTRE

FULL ALIGNMENT  
FACILITIES FOR  
BRITISH, CONTINENTAL  
& JAPANESE CARS



APPROVED REPAIRERS  
FOR MOST INSURANCE  
COMPANIES

THE MOTOR BODY ACCIDENT REPAIR SPECIALISTS  
CASTLE MILL ST.  
BOTTOM O' THE MOOR OLDHAM **624-1904/620-5982**

# G.I. HADFIELD & SONS LTD.

Skips For Hire  
24 Hour — 7 Day Service  
DOMESTIC & INDUSTRIAL  
WASTE DISPOSAL  
"SEE OUR AD UNDER SKIP HIRE"  
LUMB FARM, LUMB LANE, DROYLSDEN, MANCHESTER  
**061-370 2360**  
**061-301 4760**

## PALLET RACKING AND SHELVING — USED

We buy and sell Dexion, Link,  
Hilo, Acrow, etc.  
Free design service  
Nationwide delivery and  
installation

Largest stockists of good  
used equipment in the UK

Contact — Dave Munton or  
Keith Potter

### NORSTOR

Two Bridges Road, Newhey,  
Rochdale OL16 3SR  
Tel: 0706 881212 Telex 635091



## Pennine Supplies Ltd

UNIT 14, COMMERCIAL ROAD, OLDHAM  
LANCASHIRE OL1 1DP Tel: 061-626 5659

Suppliers to the Licensed Victualler and  
Catering Trade of

GLASSWARE  
BAR SUNDRIES  
CATERING DISPOSABLES  
WASHROOM PRODUCTS  
CLEANING MATERIALS

## BOTTOM BUILDING CONTRACTORS

Industrial or Domestic Work  
Extensions — Double Glazing  
Damp Proof Courses — Dry Rot  
Pointing — Bricklaying  
Rendering

All Types of Replacement  
Doors and Windows

Grant Work, Insurance Work  
Building Society Work  
Complete Renovations  
Local Authority Approved  
Member of Federation of  
Master Builders

Ring Now For Free Quotation  
061-620 1670

## INDUSTRIAL COMMERCIAL EQUIPMENT

Reconditioned  
Supermarket  
Trolleys

T60-£11.00 — T90-£13.00  
T100-£15.00  
T120-£17.00

DISCOUNT FOR QUANTITIES  
Large Number of Garment Rails  
also available

DAY EVENING  
0706 881212 061-620 6323



THE OFFICIAL and SOLE SUPPLIERS OF  
THE OLDHAM R.L.F.C. PLAYING KIT

and

THE OFFICIAL SUPPORTERS CLUB  
REPLICAS SUPPLIED THROUGH



ROMIDA SPORTS LIMITED

8 CURZON STREET, OLDHAM

Tel: 678 7525

72 MARKET STREET, SHAW

Tel: Shaw 842887

## OLDHAM R.L.F.C. FIXTURES 1985-6

FIRST TEAM FIXTURES (Kick-off 3.00pm unless otherwise shown)

(Home Team score first)

### 1985

#### SEPTEMBER

1—Halifax	D	12-12	A
4—Swinton (7.30)	L	12-16	H
8—Leeds	L	14-30	H
15—County Cup (1)	L	40-12	
22—Hull	L	54-12	A
29—Warrington	W	26-20	H

#### OCTOBER

6—Featherstone (3.30)	D	14-14	A
13—Salford	W	20-34	A
20—Castleford	W	46-22	H
27—Widnes	D	10-10	A

#### NOVEMBER

3—Bradford (3.30)	W	24-6	A
10—York	W	2-8	A
17—Dewsbury (3.30)	W	6-37	A
24—John Player Special (1)	W	8-46	A

#### DECEMBER

1—John Player Special (2)	L	8-7	A
8—Salford	W	32-10	H
15—Dewsbury			H
26—Widnes			H

### 1986

#### JANUARY

1—Leeds	A
5—Featherstone	H
12—York	H
19—Castleford (3.30)	A
26—St. Helens	H

#### FEBRUARY

2—Warrington	A
9—Silk Cut Challenge Cup (1)	
16—Halifax	H
23—Silk Cut Challenge Cup (2)	

#### MARCH

2—Hull K.R.	H
16—Hull	H
23—Wigan	H
28—Swinton	A
31—Wigan	A

#### APRIL

6—Bradford	H
13—York (3.30)	A
20—St. Helens	A

Next Home Games to be Played at Watersheddings

Wednesday 18th December K.O. 7.30pm Oldham 'A' v Hunslet 'A'

Thursday 26th December K.O. 3.00pm Oldham v Widnes

## DISCO PUBS

Mine Hosts: Archie and Joan

### BULLS HEAD

GEORGE STREET, OLDHAM. TEL: 624 7264  
Bed and Breakfast

Mine Hosts: Julie and Tommy

### RASCALS BAR

MANCHESTER ROAD, WERNETH, OLDHAM