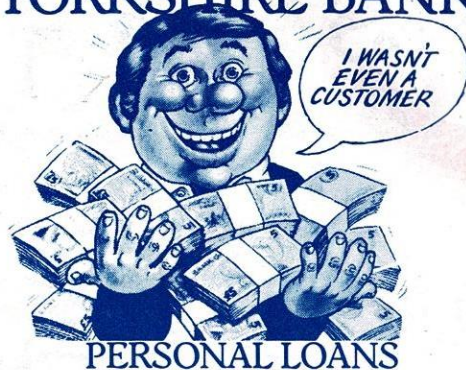


AN EVERYDAY ITEM FROM
YORKSHIRE BANK



PERSONAL LOANS



Yorkshire Bank

EVERYBODY'S EVERYDAY BANK

Full written particulars may be obtained from any branch. Personal loan applicants must be aged 18 or over.

TOP OF THE RANGE



- * Full range of Leyland vehicles
- * A fine selection of Quality Used Vehicles
- * M.O.T. tests while you wait
- * Your local Unipart Centre

Appleyard

INGS ROAD - WAKEFIELD -- TEL: WAKEFIELD 370100

Printed by John Lindley Son & Co. Ltd., 70 George Street, Wakefield. Tel. (0924) 372567

WAKEFIELD TRINITY

SUNDAY
26 OCTOBER
1986

v OLDHAM

Kick-off 3.30



40p

Club Sponsors:



Official Programme

WAKEFIELD TRINITY F.C.

Season 1986-87

President : L. POUNDER
Chairman : R. M. WALKER, J.P.
Vice-Chairman : Cr. M. TAYLOR
Committee : G. BROOKMAN; Cr. H. DALEY, S. A. FARRAR,
J. A. D. FARRER, N. P. SCOTT, O. S. WHITLEY, P. G. WILKES.
Representative on R.L. Council : R. M. WALKER, J.P.
Representative on Yorkshire County Committee : N. P. SCOTT
Secretary : A. E. PEARMAN
Team Manager : TONY DEAN
Assistants : A. RHODES, G. EVANS, T. BAILEY
Hon. Solicitors : GREEN, WILLIAMSON & WAY
Hon. Doctor : Dr. McGowan
Life Members : D. W. ARMITAGE, B. DALE, Dr. H. T. KNOWLES,
L. POUNDER



Club Honours

FOUNDED IN 1873

R.L. Challenge Cup : Winners — 1908-9, 1945-6, 1959-60, 1961-2, 1962-3.
Runners up — 1913-14, 1967-8, 1978-9.
Yorks. Challenge Cup : Winners — 1910-11, 1924-5, 1946-7, 1947-8, 1951-2,
1956-7, 1960-1, 1961-2, 1964-5.
Runners-up — 1926-7, 1932-3, 1934-5, 1936-7, 1939-40,
1945-6, 1958-9, 1973-4, 1974-5.
R. L. Championship : Winners — 1966-7, 1967-8.
Runners-up — 1959-60, 1961-2.
Division Two Championship : Winners — 1903-4.
Yorkshire League : Winners — 1909-10, 1910-11, 1945-6, 1958-9, 1959-60.
1961-2, 1965-6.
John Player Trophy : Runners-up — 1971-2.

★ ★

CLUB RECORDS

Highest Score : Trinity 78, Batley 9 (Aug. 1957)
Heaviest Defeat : Hull 69, Trinity 11 (Jan. 1921)
Attendance : 37,906 (1936), 28,736 (1964)
Appearances : 618 (H. Wilkinson 1929-30 — 1948-49)
Points : 4488 (N. Fox) **Goals** : 1,836 (N. Fox) **Tries** : 272 (N. Fox)
Seasons Records : **Points** : 407 (N. Fox 1961-2) **Goals** : 163 (N. Fox 1961-2).
Tries : 38 (F. Smith 1959-60, D. Smith 1973-4)
Match Records : **Points** : 33 (N. Fox 1967-8).
Goals : 12 (N. Fox 1967-8 and 1970-1, B. Ward 1970-1)
Tries : 7 (F. Smith 1958-9, K. Slater 1970-1).



WELCOME TO BELLE VUE

In the early part of this decade it seemed that Trinity and Oldham were continually facing each other every time the Challenge Cup Draw came around. Since then, our meetings have been almost non-existent and it gives us great pleasure to extend a long-overdue welcome to Belle Vue to all our friends from the Watersheddings.

They will note the changes which have taken place to the ground and surrounds here at Belle Vue with more interest than most of our visitors, for the Oldham Club has also been strongly scrutinised by the Safety Officers. To what extent it has affected their ground we shall no doubt see in January when we visit Oldham, but we make mention of this problem today, for we know that Oldham will bring a fair support with them and the loss of some of our seating facilities may mean that the East Stand will come under pressure for today's game. Our official figure for the stand is 1850 — 471 of which can be accommodated in individual seats in the centre. This leaves just under 1400 for the wings area and we will be looking to close on capacity with some 675-700 in each end. It is therefore important that all entering the Stand do so through the turnstiles and are in possession of tickets to compensate for passes or actually pay on entry. Home and Visiting Officials' areas are controlled by issue of special tickets only up to the number of seats in those areas and we would request co-operation from all holders of RL passes and Association passes to produce those documents at the Office where tickets for use through the turnstiles will be issued. The powers given to the Safety Officers are such that without our co-operation, they could insist on the strictest of orders being issued. We are aware of the pressure under which they operate and we must offer any assistance in our own interests when it is requested. One unco-operative member could cause repercussions which might last for weeks. Please remember that our Stewards are supporters and members who have volunteered to help the Club and be trained in that task. We have not issued peaked caps or any 'jobsworth' instructions. Nonetheless they are expected to carry out their duties in a responsible manner and if they say 'no' they will have been instructed to do so. As a result of an upgrading of the Terrace where the old Main Stand once stood, our capacity under the act is now accepted as 8264. Additional work which could be carried out at Belle Vue — particularly to re-instate the turnstiles, steps and exit at the St Catherine's Church end of the ground could give us up to 17000 at some future date. It would be nice to think that such work would have to be done at some time in the near future, but for the present, the 8264 appears to be adequate for most of our needs.

On the playing front we are pleased to welcome our fourth 'import' — Bob Cowie. Bob very nearly escaped the 'import' ruling as he holds a British Passport and both his parents are British Citizens. However, as he was born in Australia and has played all his Rugby there, he is not eligible for GB selection at International level and it was on that ruling he was declared our fourth 'import' as opposed to being excluded from the rule.

In addition, this last fortnight has seen the signing of Gary Thornton. Following a successful trial with the Alliance team against Leigh, Gary who lives in Dewsbury and played for Dewsbury Moor ARLFC, agreed to sign and made his debut against Warrington last Sunday. Finally to report on the raffle organised by the Supporters Club for Mr Scott's two seats in his Box at yesterday's International at Old Trafford. The winning ticket had been sold by Marge Noble from the Supporters' Club — if one is honest most of the tickets had been sold by Marge Noble from the Supporters' Club — and, as usual, the ticket had been given back to Marge along with a number of others sold at the same time. As a result, it was agreed that the ticket should be offered to the members of the Supporters' Club who travelled to Warrington in the form of an auction — the tickets going to the highest bidder. The result was a further increase in the Supporters' Club funds and Ian Bramley and Steve Crow boosted the overall total to over £300. The Colts fund, for which the raffle was held, has benefitted from the operation and to all who helped we offer our sincere thanks. To Marge herself it should be said that she may sometimes doubt the appreciation of her efforts and those of her colleagues, but any requests for a transfer will be turned down without discussion.

RECENT RESULTS

FIRST TEAM

Sunday 12th October. Home to LEIGH. Lost 6-12.

Try : Stanton. Goal : Diamond.

Sunday 19th October. Away at WARRINGTON.

Lost 18-28 Tries : Conway 2, Spencer. Goals : Diamond 3

A TEAM

Thursday 9 October. Home to LEIGH. Won. 22-20.

COLTS

Saturday 11th October. Home to LEIGH. Won 76-4.

Thursday 16th October. Home to LEEDS. Won 9-6.

FORTHCOMING FIXTURES

FIRST TEAM

Sunday 2nd Nov. Away at WIGAN. 3.00.

Sunday 9th November. Home to LEEDS. 3.30 (postponed from 22nd September).

A TEAM

Thursday 30th October. Home to HALIFAX. 7.30.

Friday 7th November. Away at WIGAN. 7.30.

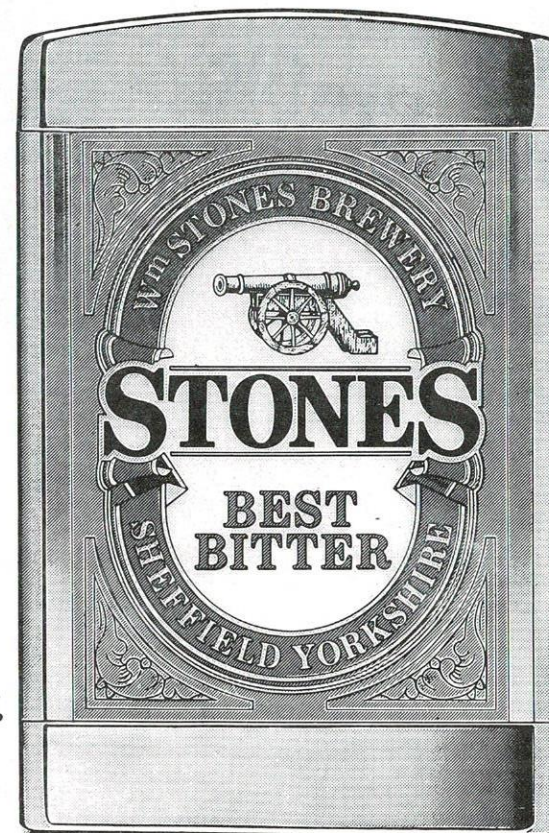
COLTS

Saturday 1st November. Home to BRADFORD. 2.30.

Saturday 8th November. Home to HULL KR. 2.30.

Please note : New times for colts games due to GMT.

*When the moves aren't smoothly flowing,
And the lads can't seem to score,
Chin up, you'll soon be going,
Down the local to cheer yourself up*



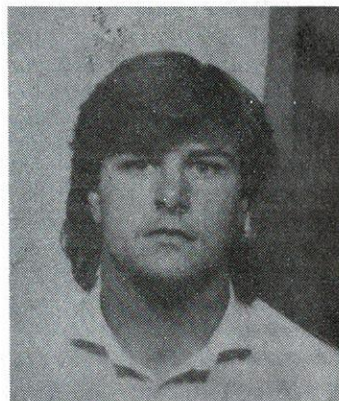
**Stones.
Sheer poetry.**

**Sponsors of
the Rugby League Championship and Premiership.**



★ Player Profile

No. 2 ★ ★



Player..... IAN DAVID JOWITT
Date of Birth 12.5.65
School Normanton Freeston High School
Occupation Office Clerk
Height 5ft 9in
Weight..... 12st 7lb
Position Left Wing
Career Normanton ARLFC
Wakefield RLFC
Biggest Influence on Rugby Career..... Bernard Galby (Normanton Coach)
Ambition..... To play for a professional club
Favourite Player Joe Lyddon
Most Difficult Opponent Gary Clark, Hull KR
Girlfriend Dawn Ashurst (engaged)
Hobbies Fishing and Sport in general
Favourite Food Roast Beef and Yorkshire Puddings
Favourite Drink Castlemaine
Favourite Music Motown and Pop Music, particularly Diana Ross
Favourite TV Programme..... Only Fools and Horses
Favourite Personality..... Ben Elton (Saturday Live)



To celebrate the arrival
of the Australian
Rugby League Team

★ ★
present

An Evening of Rugby League

on

MONDAY 27TH OCTOBER 1986

FEATURING ARCHIVE TEST VIDEOS

DOORS OPEN 7 PM — VIDEO STARTS 8.30 PM

★ ★ ★

Guest Panel of :

WALLY LEWIS — Captain, Australian Team
DAVID WATKINSON — Captain, Great Britain
DON FURNER — Coach, Australian Team
MALCOLM REILLY — Coach, Castleford
[Ex Great Britain International]

★ ★ ★

Admission £2 or £1

BY SHOWING THIS PROGRAMME

★ ★ ★

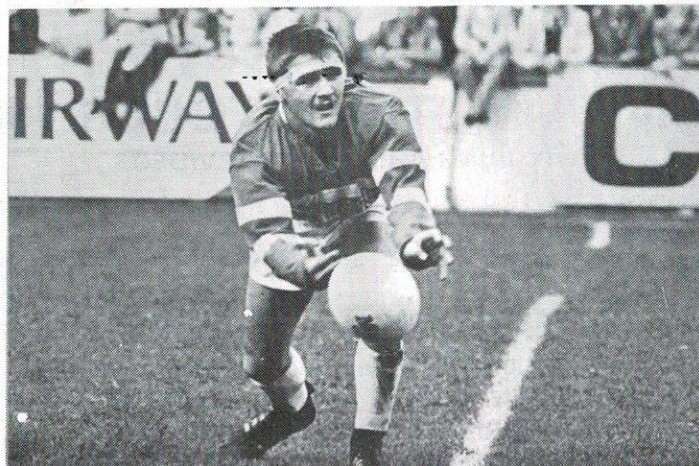


*All the Australian Team
will be in attendance on this night.
Come along and meet the Players !*



CONGRATULATIONS

To Billy Conway for being chosen as the Halbro/Open Rugby Shooting Star of the Month for September. Billy will join the other monthly winners for presentation at the end of the season and the final determination of the Shooting Star of the Season Award.



OCTOBER DIARY

Congratulations to the following members of the playing staff who had Birthdays during the month :

Jimmy Green (30 on Saturday 4th) .
 Paul Hendry (26 on Sunday 5th)
 Kevin Hickman (26 yesterday) .
 Richard Kelly (21 on Saturday 4th) .
 Robert Moules (20 on Saturday 18th) .
 Richard Pell (20 on Friday 17th) .
 David Wandless (28 on Thursday 23rd) .
 Keith Whiteman (28 on Thursday 30th) .
 Mark Wild (20 on Friday 31st) .

John Thompson played his 150th first team game against Leigh.

John Lyons played his 100th first team game against Warrington.

Welcome to Gary Thornton who has joined the Club as a Professional player from Dewsbury Moor ARLFC.

Players sponsors

GRASS CONCRETE LTD

22 Bond Street
 Wakefield
 Tel. 375997

Powerhouse

Power Tools
 Sales and Repairs
 Bradford Road
 BATLEY
 Tel. 479554

TURTON CONSTRUCTION LTD

Sovereign Works
 BIRSTALL
 West Yorkshire
 Tel. Batley 477324

DOWNINGS STEEL LTD

DONCASTER ROAD
 BARNLEY

DECOR -STYLE

Decorating and Painting
 Contractors
 Tel. Wakefield 275341

Gerry Booth's Carpet & Bed Barn

★ Specialist in Fitted Carpets ★
 ★ Beds ★
 ★ Broadloom Carpet Stockists ★
 SMYTH STREET
 WAKEFIELD . WF1 1ER
 TEL. 371184

Barry Todd Coaches

Your Local Coach
 Operator
 Ring
 Wakefield 277194 & 262220

Abson-Paley Associates

Estate Agents in
 Wakefield and Normanton
 Tel: 365011 & 896931

FOREGATE LTD.

Bar and Fabric Specialists to the
 Construction Industry Steel Fixing
 Service . Building Accessories
 Spring Place Mills, Shillbank Lane
 Mirfield, West Yorks WF14 0QZ
 Tel. Mirfield (0824) 498941

S.C.N. HEWITT (BUILDERS) LTD

13 MILL LANE
 EAST ARDSLEY
 TEL. WAKEFIELD 827946

N. B. HOUGH CONSTRUCTION

Civil Engineering
 Contractors
 Kirkgate Commercial
 Centre
 Wakefield Tel. 368618

QUICK GETAWAYS

HOGG ROBINSON
 TRAVEL LTD
 2a Bullring . Wakefield
 Tel. 0924 372175

D.E.C. KITCHENS

of
 MORLEY

DERRAVAR FENCING

7 Market Place
 Normanton
 Tel. Wakefield
 894218

GALLERY LÉ SHON (SKIN CENTRES)

for leathers
 sheepskins and furs
 Upper Mall
 The Ridings Shopping Centre
 Wakefield . West Yorkshire
 WF1 1DY ★ Tel. (0824) 362003



UK's Discotheque of the Year

★ Official Sponsors of Wakefield Trinity ★
Westgate - Wakefield - Tel 382569



MATCH REFEREE



J.E. SMITH

Date of birth: 2.3.44
Grade Two: 1977-78
Grade One: 1983-84

* 70-days Match Line-up* plus * Scrum & Penalty count *

WAKEFIELD T.

- 1 Gary SPENCER
- 2 Russell KLEIN
- 3 Glenn STANTON
- 4 Philip EDEN
- 5 Steve DIAMOND
- 6 Steve EVANS
- 7 Jimmy GREEN
- 8 Robert COWIE
- 9 Billy CONWAY
- 10 Ian HOPKINSON
- 11 Tommy GITTINS
- 12 Rowan BRENNAN
- 13 Stewart SMITH
- 14 John LYONS
- 15 Steve POTTS

Players' Sponsors - - -

POWERHOUSE Power Tools
BARRY TODD COACHES
HOGG ROBINSON TRAVEL
TURTON CONSTRUCTION LTD.
GRASS CONCRETE LTD.
DERRAVAR FENCING, Normanton
DOWNINGS STEEL LTD.
DECOR STYLE, Painting and Decorating
GALLERIE LE SHON, Skin Centres
D.E.C. KITCHENS of MORLEY
FOREGAL LTD.
ABSON-PALEY ASSOCIATES, Estate Agents
N. B. HOUGH CONSTRUCTION LTD.
GERRY BOOTH'S CARPET & BED BARN nts
S.C.N. HEWITT, Builders

OLDHAM

- 1 Jeff EDWARDS
- 2 Paul SHERMAN
- 3 Des FOY
- 4 Gary WARNEKE
- 5 Mike TAYLOR
- 6 David TOPLISS
- 7 Ray ASHTON
- 8 Wally JONES
- 9 Terry FLANAGAN
- 10 Bruce CLARK
- 11 Mick WORRALL
- 12 David HOBBS
- 13 Stuart RAPER
- 14 Colin HAWKYARD
- 15 Neil CLAWSON

Scrum

1	2	3	4	5
6	7	8	9	10
11	12	13	14	15
16	17	18	19	20

Penalties

1	2	3	4	5
6	7	8	9	10
11	12	13	14	15
16	17	18	19	20

Referee :

J. E. SMITH (Halifax)

Touch Judges :

A. MEREDITH (Red Flag)
A. R. PICKETT (Orange Flag)

Scrum

1	2	3	4	5
6	7	8	9	10
11	12	13	14	15
16	17	18	19	20

Penalties

1	2	3	4	5
6	7	8	9	10
11	12	13	14	15
16	17	18	19	20

Today's



Match Ball

DONATED BY

JOHN LINDLEY

Son & Co. Ltd.

GENERAL & COMMERCIAL PRINTERS

70 GEORGE STREET
WAKEFIELD Tel 372567

★ For all your **PRINTING** ★
★ requiremements ★

John Lindley Son & Co. Ltd

70 George Street - Wakefield - Telephone (0924) 372567

☆ next to Drill Hall - Parking outside ☆

Call & browse through
our superb range of
WEDDING STATIONERY

MATCH ACTION» » » »



Photo by courtesy of 'The Wakefield Express'.



**it's finger
lickin good
after the match
call at
18 Beastfair
Pontefract
for a real
tasty treat**

Electrical Repairs Rewind Service

★

**24-HRS EMERGENCY
CALL OUT SERVICE**

★

Tel. Wakefield 365117
377242 (Day)
376107 and 256857 (Night)

**British and European motors
from Stock**

**CHARLOTTE STREET
WAKEFIELD**

« Trinity v LEIGH « « «



Photo by courtesy of 'The Wakefield Express'.

THE ATLAS TRADING GROUP LTD

OLDHAM ROAD . ASHTON-U-LYNE . OL7 9AZ

061-339 2011 (5 LINES)

★★★

EVERYTHING FOR THE TRADE AND THE D.I.Y. MAN

**Metal Profiles ★ Roofing ★ Cladding Materials ★ Ironmongery
★ Hand/Power Tools ★ Paint and Adhesives ★ Garden Tools**

GLASS — CUT TO SIZE

Plumbing Systems ★ Polypipe ★ Rainwater and Drainage goods

**Timber — Sheet Material ★ Doors/Windows/Casings ★
Softwood and Hardwood Planed in all sizes ★ ½ Hour Fire Check
Doors ★ Insulation/Fire Linings ★**

BATHROOMS AND KITCHENS

TILES AND ACCESSORIES



STONES BITTER CHAMPIONSHIP AND PREMIERSHIP

The 13-a-side code's oldest competition is now titled the Stones Bitter Championship, the end of season top eight tournament being renamed the Stones Bitter Premiership.

The sponsorship fee will be paid in three annual instalments, £120,000 in 1986-87, £130,000 in 1987-88, and £150,000 in 1988-89.

The major new sponsorship package covers 512 Championship and Second Division matches next season, plus seven ties in the Premiership, the Final of which will be televised by the BBC. Championship matches will also be featured on cable television in a new contract with Screensport.

A main feature of the Stones Bitter sponsorship will be the introduction of a new style referees strip for League matches sporting the name Stones on the front of the jersey.

The Stones Bitter Championship and Premiership campaign will be managed by Leeds-based Bass North, brewers of the famous Stones Best Bitter, and the largest brewery company in the North.

Sponsorship monies will be used for prize money and ground improvement schemes through the League's Capital Development Fund. A full promotional programme is being devised for the 4,500 Stones Bitter accounts throughout the North of England.

Rugby League Chairman, Joe Seddon, said: 'The 13-a-side code is delighted to welcome a company of the national stature of Bass into our ever-growing sponsorship portfolio. The Stones Bitter Championship and Premiership provides not only a massive cash injection but also a platform for an extensive promotional campaign for mutual benefit.'

Managing Director of Bass North, George Sykes, said: 'We are delighted to enter into this three-year partnership with the Rugby League. The sport is close to the hearts of many of our customers, licencees and staff. In Hull alone, there are nine Bass licencees who are former professional Rugby League players.'

'It is a sport that is growing in popularity—and deservedly so. We will be doing all we can to help promote Rugby League throughout our pubs and free trade accounts throughout the North.'



Supporters' Club News **

VIP DAY OUT RAFFLE

The Supporters' Club would like to thank everyone who bought and sold tickets for the 'VIP Day Out' Raffle. There was a very pleasing response from players, supporters and members of the general public. £300.50 has been raised after expenses and much of this money has been raised by the sale of tickets through the Supporters' Club. The winner is Mr S. Crow, who is to be accompanied to the match by Mr I. Bramley.

Our thanks go also to players and supporters of local clubs Castleford and Featherstone who also supported the raffle, and to the Graziers, Belle Vue, the Black Rock, and Raffles, whose landlords kindly allowed us to sell tickets there.

CHALLENGE CUP FINAL TICKETS

For members anxious to make their Wembley arrangements early in order to avoid disappointments later, the Supporters' Club can obtain their Wembley tickets for them.

The Challenge Cup Final will take place at Wembley on Saturday 2nd May, ticket prices are as follows:

Seats: £22, £16, £10. Standing: £6.

COACHES TO AWAY MATCHES

Bookings for coaches to away matches are taken at the Supporters' Sales Bar in the Ground on Match Days or by ringing:

N. Vause on Barnsley 723845, or

D. Teasdale on Wakefield 275407.

The next away matches are:

Sunday 2nd November at Wigan,
leaving at 12.30 pm from Borough Road for a 3 pm kick-off.

Sunday 23rd November at Hull KR,
leaving at 1.15 pm from Borough Road for a 3 pm kick-off.

Players Records

UP TO AND INCLUDING v WARRINGTON

	1986-87					Total				
	P	T	G	DG	Pts	P	T	G	DG	Pts
N. M. Bell	7	1	0	0	0	68	18	0	0	72
R. M. Brennan ...	4	1	0	0	4	4	1	0	0	4
G. Cocks	3	0	0	0	0	83	18	0	0	70
B. R. Conway	8	3	0	0	12	16	3	0	0	12
R. G. Cowie	1	0	0	0	0	0	0	0	0	0
S. Diamond	9	0	12	1	25	110	19	246	3	550
P. G. Eden	9	1	0	0	4	106	23	0	0	91
S. Evans	9	3	2	0	16	9	3	2	0	16
T. Gittins	8	1	0	0	4	8	1	0	0	4
J. J. Green	5	0	0	0	0	5	0	0	0	0
K. Hickman	4	0	0	0	0	26	4	0	2	18
I. G. Hopkinson ..	8	1	0	0	4	112	17	0	0	65
I. Hughes	4	0	0	0	0	57	7	0	0	27
R. S. Klein	3	0	0	0	0	3	0	0	0	0
I. D. Jowitt	7	4	0	0	16	16	6	0	0	24
T. Lazenby	7	2	0	0	8	34	6	30	3	87
J. Lyons	5	0	0	0	0	100	35	76	11	286
L. D. Rotherforth	3	0	0	0	0	73	35	0	0	122
S. Smith	5	0	0	0	0	38	10	0	0	40
G. W. Spencer ...	6	3	0	0	12	21	9	0	0	36
G. H. Stanton	4	1	0	0	4	4	1	0	0	4
A. Sygrove	1	0	0	0	0	50	8	82	0	196
J. S. Thompson ..	6	0	0	0	0	151	12	0	0	41
A. P. Tosney	1	0	0	0	0	37	6	10	0	44
A. Walker	1	0	0	0	0	4	1	0	0	4
K. D. Whiteman ..	4	1	0	0	4	27	9	0	0	36
D. P. Williams ...	3	0	0	0	0	23	2	0	0	8

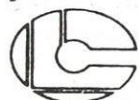
This page sponsored by ›

Patio Doors

Doors .

Windows etc

Ten Year Guarantee



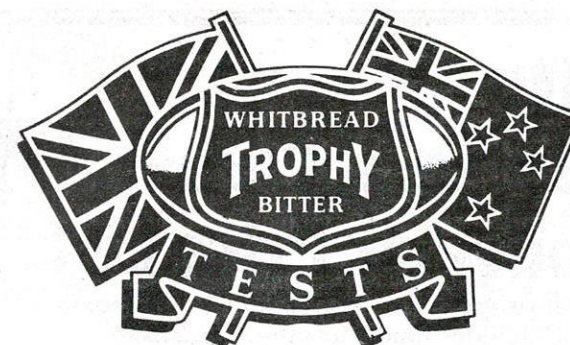
Cressland

WINDOW DEVELOPMENTS

Cressland House - Tootal Street

Wakefield

Tel: (0924) 374437



Saturday 25th October, at Old Trafford, Manchester. KO 2.15.

Saturday 8th November, at Elland Road, Leeds. KO 2.15.

Saturday 22nd November, at Central Park, Wigan. KO 2.15.

Seat tickets are priced £8.00, £7.00, and £6.00 for the First and Second Tests, and £7.00 for the Third Test.

Seat tickets can be obtained from each of the three Test venues plus tickets for all three Tests are available from :

The Ticket Office

The Rugby Football League

180 Chapeltown Road

Leeds, LS7 4HT.

ALL ROUND PRIZE INCREASES MARK 20 YEARS OF JOHN PLAYER SPECIAL RUGBY LEAGUE SUPPORT

Prize money is increased in every round of this season's John Player Special Trophy Rugby League competition which will be worth a record £85,000.

The competition is the 16th in the 20-year support of Rugby League by Imperial Tobacco Limited and makes the John Player Special sponsorship one of the longest running in British sport.

The sponsorship again includes a £23,000 donation to the League's Capital Development Fund to help clubs meet the stringent requirements for ground safety.

All 34 First and Second Division Rugby League clubs and two leading amateur clubs will take part in the 1986-87 competition which starts with a preliminary round of four matches on November 16th followed by the first round at the end of that month. It continues through December and Christmas followed by the final on January 10th as the first major Rugby League event of the new year.

The BARLA teams taking part this season are Mysons from Humberside and Millom from Cumbria as winners and runners-up respectively of The Whitbread National Cup competition. Both start in the preliminary round.

Trinity Supporters' Club Souvenir Price List



On Sale match days or contact : D. Teasedale,
83 Jenkin Road, Horbury. Tel. 275409

Trinity Ties	£ 4.00	Rugby Shirts :	
Trinity Scarves	£ 2.50	26"/28"	£11.50
Bar Scarves	£ 1.50	30"/32"	£12.00
Large Rosettes	60	34"/36"	£13.00
Bob Caps	£ 1.50	38"/40"	£14.00
Panel Hats	£ 1.00	42"/44"	£14.50
Belts	£ 3.00		
Jackets	£19.50	Pullovers :	
Car Stickers	30	32"/34"	£10.00
Stickers	10	36"/40"	£10.50
Lapel Badges	70	42"/44"	£11.00
Key Rings	15	26"/28"/30"	£ 9.50
Pens	10	46"	£11.50
Pennants	£ 1.00		
T-Shirts	£ 2.00	Slipovers :	
Gloves	£ 1.50	32"/34"	£ 9.50
Sweatshirts	£ 3.00	36"/38"/40"	£10.00
Notebooks	£ 1.00	42"/44"	£10.50
Sun Visors	£ 1.20	26"/28"/30"	£ 9.00
		46"	£11.00
Trinity Caps	£ 1.50		



This page

is

sponsored

by » »



24 hour
mobile

**Advance
Windscreen
Services**

Wakefield 367191

STD CODE 0924

Pontefract 706922

STD CODE 0977



TRINITY FIXTURES 1986-87

First Division

Aug. 31	Sun.	Hull	Away 3.00
Sep. 7	Wed.	Widnes	Away 7.30
14	Sun.	Castleford	Away 3.30
21	Sun.	Batley - Y Cup	Away 3.00
24	Wed.	Y Cup - 2	
28	Sun.	BRADFORD	Home 3.30
Oct. 5	Sun.	St Helens	Away 3.00
12	Sun.	LEIGH	Home 3.30
19	Sun.	Warrington	Away 3.00
26	Sun.	OLDHAM	Home 3.30
Nov. 2	Sun.	Wigan	Away 3.00
9	Sun.	LEEDS	Home 3.30
16	Sun.	BARROW	Home 3.30
23	Sun.	Hull K R	Away 3.30
30	Sun.	John Player - 1	
Dec. 7	Sun.	John Player - 2	
14	Sun.	FEATHERSTONE	Home 3.30
21	Sun.	CASTLEFORD	Home 3.30
26	Fri.	Leeds	Away 11.30
Jan. 4	Sun.	SALFORD	Home 3.30
11	Sun.	Oldham	Away 3.00
18	Sun.	HULL K R	Home 3.30
25	Sun.	Barrow	Away 2.30
Feb. 1	Sun.	Silk Cut CC - 1	
8	Sun.	ST HELENS	Home 3.30
15	Sun.	Silk Cut CC - 2	
22	Sun.	Featherstone	Away 3.30
Mar. 1	Sun.	HALIFAX	Home 3.30
8	Sun.	WARRINGTON	Home 3.30
15	Sun.	WIDNES	Home 3.30
22	Sun.	Bradford	Away 3.30
29	Sun.	WIGAN	Home 3.30
Apr. 5	Sun.	Leigh	Away 3.30
12	Sun.	Salford	Away 3.00
17	Fri.	Halifax	Away 3.00
20	Mon.	HULL	Home 3.00

SLALOM — LAGER —



Aug. 29	Fri.	Widnes	Away 7.30
Sep. 5	Fri.	Warrington	Away 7.30
13	Sat.	Barrow	Away 2.30
19	Fri.	Leeds	Away 7.30
25	Thu.	CASTLEFORD	Home 7.30
Oct. 3	Thu.	Dewsbury Y S Cup	Away 7.30
9	Thu.	LEIGH	Home 7.30
		Y S Cup - 2	
23	Thu.	ST HELENS	Home 7.30
30	Thu.	HALIFAX	Home 7.30
Nov. 7	Fri.	Wigan	Away 7.30
13	Thu.	No Fixture	
20	Thu.	HULL K R	Home 7.30
28	Fri.	St Helens	Away 7.30
Dec. 4	Thu.	SALFORD	Home 7.30
11	Thu.	No Fixture	
19	Fri.	Castleford	Away 7.30
27	Sat.	LEEDS	Home 2.30
Jan. 2	Fri.	Salford	Away 7.30
8	Thu.	HULL	Home 7.30
17	Sat.	Hull K R	Away 2.30
24	Sat.	BARROW	Home 2.30
30	Fri.	Hull	Away 7.30
Feb. 8	Thu.	Alliance Cup - 1	
12	Thu.	WIDNES	Home 7.30
22	Thu.	Alliance Cup - 2	
27	Fri.	Halifax	Away 7.30
Mar. 5	Thu.	WARRINGTON	Home 7.30
12	Thu.	WIGAN	Home 7.30
22	No Fixture		
26	Thu.	Leigh	Away 7.30