

¹⁵
OLDHAM

Team Check

¹⁴
WARRINGTON

MICK BURKE
HUSSEIN M'BARKI
PAUL SHERMAN
PAUL SHERMAN
GARY WARNECKE
GARY WARNECKE
GARY WARNECKE
MIKE TAYLOR
DAVID TOPLISS (Capt.)
PADDY KIRWAN
DAVID HOBBS
BRUCE CLARK
IAN SANDERSON
HUGH WADDLE
MICK WORRALL
STUART RAPER
DAVID HOBBS
TERRY FLANAGAN
COLIN HAWKWARD
NEIL CLAWSON

1
2
3
4
5
6
7
8
9
10
11
12
13
14
15

BRIAN JOHNSON
KEVIN MEADOWS
PAUL CULLEN
FOSTER
RONNIE DUANE
DES DRUMMOND
KEN KELLY
BISHOP
MARTIN CROMPTON
LES BOYD
KEVIN TAMATI
TONY HODSON
ROSSELLE
KENTAMATI
JACKSON
JOE ROPATI
PHIL CAPEWELL
SANDERSON
BOB JACKSON
GREGORY
T.B.A.
KELLY
T.B.A.
ECCLES

Referee: G. F. Tickle Touch Judges: P. M. Oliver, G. Lightfoot

GEORGE HILL



Millplan Kitchens

Scottfield, Ashton Road, Oldham

Phone for FREE colour brochure 061-652 7421 * Flatpack * Assembled * Fitted



BOLTON Millfield Road, Brightmet, Bolton 384867 **SALE** Glebelands Road 061-969 7543

RADIO 1 CARS

24 HOUR SERVICE
5, 6, & 7 SEATER

633 2277



HUSSEIN M'BARKI

Photo Courtesy of
OLDHAM CHRONICLE



OFFICIAL PROGRAMME 50p

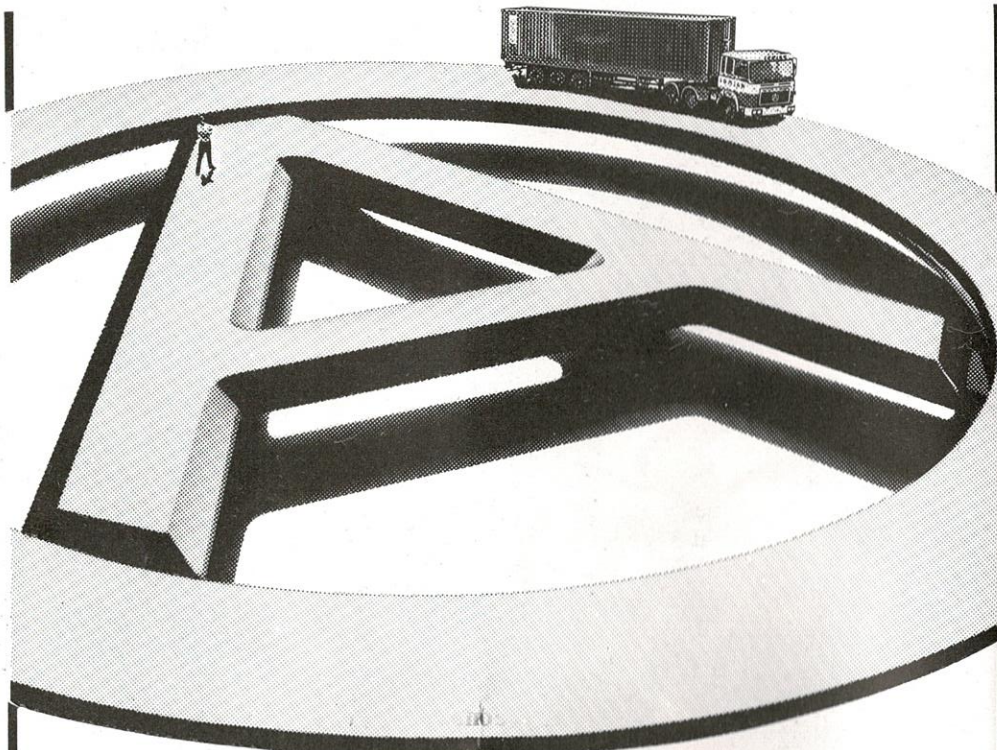
Programme Sponsor:
Salford Automatics Ltd.

Match Sponsor: NORTHWEST DECOILING

OLDHAM

Matchball Sponsor: OLDHAM MOTOR COMPANY

STONES BITTER CHAMPIONSHIP
WARRINGTON
Wednesday, 11th March, 1987



THE A TEAM.

At home or away, you'll see the big A out in front. Whether it's a refuse collector (we supply over 250 local authorities) or a 328 hp 38-tonner safely shipping a heavy load down the motorway, we've a team of tough and talented trucks to please almost everyone.

Oldham, it seems, has the perfect climate for building better trucks and fielding better players.

WE'VE GOT THE TOUGHEST TEAM IN EUROPE.



Oldham Rugby League Football Club

THE PAVILION · WATERSHEDDINGS · OLDHAM

Telephone: 061-652 5244 and 061-624 4865

President: R. Hatton

Chairman: H. Ashworth

Vice-Chairman: K. Potter

Treasurer: E. Bayliss

Committee: K. Broadbent, R. Ogden, M. A. Richardson, B. Boustead, David Lord, J. Hall

Hon. Architects: J. Hall R.I.B.A.

Hon. Club Solicitor: A. J. Adler L.L.B

General Manager: F. Myler

Hon. Secretary: F. Howarth, B.A.

Coaching Staff: G. Starkey, B. Gartland

Professional Playing Staff:

A. Alexander, R. Ashton, K. Atkinson, L. Casey, N. Clawson, T. Foley, M. Hall, C. Hawkyard, W. Jones, P. Kirwan, P. Lord, T. Naidole, J. Ogburn, M. Parrish, I. Sanderson, M. Worrall, C. Chisnall, J. Edwards, T. Flanagan, D. Foy, D. Hobbs, P. Lowndes, H. M'Barki, R. Marsden, A. Morrison, S. Patterson, P. Sherman, M. Taylor, G. Warnecke, G. Bishop, G. Bridge, B. Caffrey, L. Chadwick, B. Clark, L. Cook, P. Morris, C. Myler, D. Nicholson, T. Ogden, A. Taylor, D. Topliss, G. Walczack, S. Raper

Hon. Doctors: Dr Grey, Dr Johnson

Dental Surgeon: Mr N. Gibbison

Hon. Consultant Orthopaedic Surgeons: Mr H. Thompson, Mr D. Walker

Physiotherapist: Mr. A. Bonnelle

Asst. Physiotherapist: Mr J. Watkins

Lifeline: L. Bostock

Official Timekeeper: J. Roscoe

CLUB RECORDS

Record Victory: 67-6 v. Liverpool City, April 1959

Record Defeat: 11-67 by Hull K.R., September 1978

Record Attendance: 28,000 v Huddersfield, 24th February, 1912

Record Receipts: £9,100 v Wakefield, 24th February, 1980

Record Transfer Fee Paid: £40,000 to Featherstone for David Hobbs, February, 1985

Record Try Scorer: Reg Farrar, 49 tries, 1921-22 season

Record Goal Scorer: Bernard Ganley, 224 goals, 1957-58 season

Record Point Scorer: Bernard Ganley, 28 points v Liverpool City, April 1959

First Game: 21st October, 1876 v Stalybridge

Highest number of points scored: Bernard Ganley, 2,881

Most Appearances: Joe Ferguson, 685

Most Tries: Pre 1900, Jack Hirst, 233. Since 1900, Alan Davies, 182

CLUB HONOURS

Rugby League Championship Play-off Winners: 1909-10, 1910-11, 1956-57

Runners-up: 1906-07, 1907-08, 1908-09, 1921-22, 1954-55:

First Division Champions: 1904-05

Second Division Champions: 1963-64, 1981-82

Rugby League Challenge Cup Winners: 1898-99, 1924-25, 1926-27

Runners-up: 1906-07, 1911-12, 1923-24, 1925-26

Lancashire Cup Winners: 1907-08, 1910-11, 1913-14, 1919-20, 1924-25, 1933-34, 1956-57, 1957-58, 1958-59

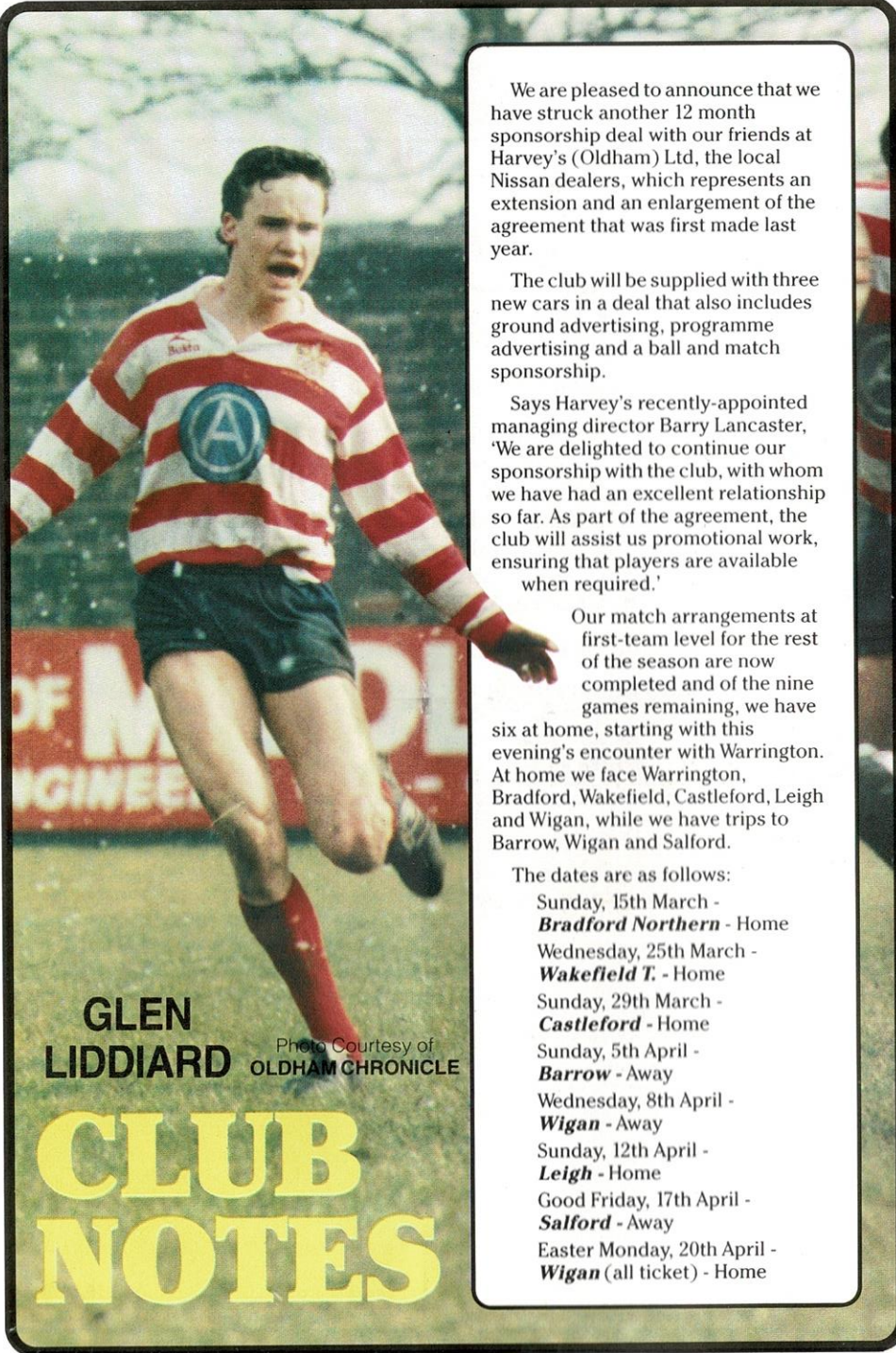
Runners-up: 1908-09, 1911-12, 1918-19, 1921-22, 1954-55, 1966-67, 19668-69

Lancashire Championship Winners: 1907-08, 1909-10, 1921-22, 1956-57, 1957-58

Runners-up: 1908-09, 1910-11, 1911-12, 1919-20, 1923-24, 1954-55

Lancashire Shield Winners: 1975-76, 1979-80

Colts Premiership Trophy: 1979-80



**GLEN
LIDDIARD**

Photo Courtesy of
OLDHAM CHRONICLE

CLUB NOTES

We are pleased to announce that we have struck another 12 month sponsorship deal with our friends at Harvey's (Oldham) Ltd, the local Nissan dealers, which represents an extension and an enlargement of the agreement that was first made last year.

The club will be supplied with three new cars in a deal that also includes ground advertising, programme advertising and a ball and match sponsorship.

Says Harvey's recently-appointed managing director Barry Lancaster, 'We are delighted to continue our sponsorship with the club, with whom we have had an excellent relationship so far. As part of the agreement, the club will assist us promotional work, ensuring that players are available when required.'

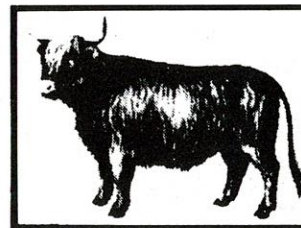
Our match arrangements at first-team level for the rest of the season are now completed and of the nine games remaining, we have six at home, starting with this evening's encounter with Warrington. At home we face Warrington, Bradford, Wakefield, Castleford, Leigh and Wigan, while we have trips to Barrow, Wigan and Salford.

The dates are as follows:

- Sunday, 15th March -
Bradford Northern - Home
- Wednesday, 25th March -
Wakefield T. - Home
- Sunday, 29th March -
Castleford - Home
- Sunday, 5th April -
Barrow - Away
- Wednesday, 8th April -
Wigan - Away
- Sunday, 12th April -
Leigh - Home
- Good Friday, 17th April -
Salford - Away
- Easter Monday, 20th April -
Wigan (all ticket) - Home

HARVEY ASHWORTH MANCHESTER LTD.

• Wholesale Butchers •



**STALL No. 25 26
THE ABATTOIR
RIVER BANK ROAD
MANCHESTER M10
Telephone: 061-223 2097**

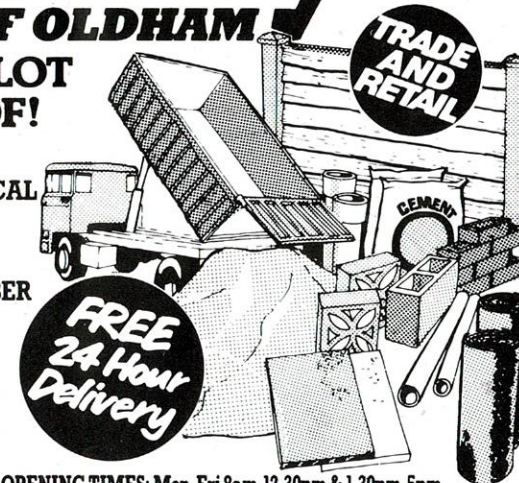
Bradbury's OF OLDHAM

**WE'VE GOT THE LOT
UNDER ONE ROOF!**

- PLUMBING & HEATING
- IRONMONGERY ● ELECTRICAL
- TOOLS ● FASTENINGS
- GLASS ● SHOWROOM
- HEAVYSIDE BUILDING & TIMBER

Bradbury's
OF OLDHAM
BUILDING MATERIALS SUPPLIES
COLDHURST ST., OLDHAM OL1 2PX
Telephone:

061-624 9481



**OPENING TIMES: Mon-Fri 8am-12.30pm & 1.30pm-5pm
Sat 8am-12 noon**

Match Sponsor:

North West Decoiling

Unit 3, Palatine Works, Causeway Avenue, Warrington

Ball Sponsor:

Oldham Motor Company

Manchester Road, Werneth, Oldham

Team Sponsor:

Javelin Music (NW) Ltd

Bentley Avenue, Middleton, Manchester

1.	P. Kendall, Commercial Vehicle Specialist, 061-273 5132
2.	Bellfruit Services Ltd, Suppliers of Juke Boxes & Pool Tables
3.	Oldham R.L.F.C. Commercial Department
4.	Modern Motifs, Shaw Road, Oldham
5.	J. Bowden, Contractors, 299 Lees Road, Oldham
6.	Kleen Car Valeting, 36 Park Road, Oldham 626-4823
7.	Chadderton Car & Van Hire, 5 Lowe Lane, Chadderton
8.	Edelle Upholstery, Quebec Street, Oldham
9.	Geeson Cots, 97 Manchester Road, Dalton
10.	Blue Bird Private Hire, 47 Union Street, Oldham
11.	Gilbert Ashworth
12.	Prince George Hotel, 47 Union Street, Oldham
13.	J&L Car Seat Covers, Unit 57, Acorn Centre, Oldham
14.	Hazel Chilton Fashion Designer
15.	Staff of Askew Design & Print, Doncaster

Players Supporters pay £30. We give them two Seat Tickets and Tea Tickets.

The person who supports the home team first try wins £100.

Applications are invited.



Matthew Brown

Brewers of traditional beers for over 150 years

WELCOME TO THE WIRE!

Warrington come to Watersheddings this evening looking for a win which is vital to their Stones Bitter title ambitions after recent defeats by St Helens and Barrow.

Coupled with a home reverse by Bradford Northern in the Silk Cut Challenge Cup, Warrington have gone through a sticky patch, largely due to a build-up of injuries that have caused enormous problems for coach Tony Barrow and his assistant Les Boyd.

Boyd himself has been out through injury of late, though there were hopes that he might have been back in the side at Wakefield last Sunday.

Long-standing injuries have robbed the Wire of the services of forwards such as Tony Worrall, Bob Eccles and Carl Webb for most of the season.

On top of that, Barrow's boys have run into a crazy spell of injury trouble that has seen them lose the services of Test loose-forward Mike Gregory, and fellow back-row men such as local lad Mark Roberts, the former Oldham St Anne's player, and Alan Rathbone.

Lesser known players have also been on the injury list, and the Wires pack problems were such that they recruited Oldham man Paul Lowndes on loan with a view to a permanent signing, with Tony Worrall coming in the opposite direction to Oldham, depending on how quickly he can resume training after shoulder trouble.

It is not known whether Lowndes will be in action this evening and, at the time of writing, Wire will also be hoping that under-21 internationals Paul Bishop and Gary Sanderson come unscathed through the international in France.

Both missed the match at Wakefield at the weekend when, with Wigan and Saints both taking a rest, the Wire had the chance to go joint top with Wigan, though second on an inferior scoring difference.

Loose-forward Gregory suffered horrific facial injuries during the Test match in France a few weeks ago when he suffered fractures to both cheekbones and his nose.

Despite these problems, Warrington can still field a side to test the best. The defeat at Barrow was strictly a "one off" and, to make matters worse speed merchant Roberts, one of the fastest back-row men in the business, broke his ribs at Craven Park in a disappointing day for the Wire.

They are particularly strong in the backs just now, with former Test centre Ronnie Duane having recovered from injury, Kiwi Test ace Joe Ropati playing as strongly as ever, and Des Drummond having moved from Leigh in a £40,000 deal a few weeks ago.

Ropati, in fact, has been helping out in the pack due to the forward crisis and he showed his strength with a hat-trick of tries from second-row in the recent win over Featherstone.

Mark Forster, who won the professional sprint series last autumn used as part of the build-up to the Tests against Australia, went on to earn full Test honours against France, but he has since found competition for his wing spot at club level in the shape of Drummond, one of our game's most prolific of scorers in the last few years.

Drummond made his debut while Forster was away with Great Britain in France and, since then Mark has had a battle on his hands to get back into the team – a sure indication of the strength in depth of the Warrington backs.

Brian Johnson at full back, the flying Aussie, has already scored 15 tries this season – a club record for a Warrington full back – and men of the calibre of Kevin Meadows, Paul Cullen, Duane, Ropati, Forster and Drummond are all battling for back-line places.

Veteran Ken Kelly steers the ship well from outside-half with young Bishop making a big impact on the game in the last two seasons and looking a certainty to go on to full Test honours and possibly earn selection for next year's Down Under tour.

Les Boyd, the big Aussie, is without doubt one of the game's top personalities and, on form, one of the best front-row forwards in world rugby.

He and Kiwi Kevin Tamati can test the best in the front-row of the pack and, despite their injury problems, forwards such as this overseas pair, Tony Hodson, Bob Jackson, Sanderson and Phil Capewell ensure that Wires turn out a strong and effective six.

Having reached the final of the John Player Special Trophy, it was a blow for Warrington to have to take on Wigan without the suspended Bishop, and Wigan went on to end a run of three consecutive defeats by the Wilderspool men to pick up their second trophy of the season at Burnden Park.

That defeat was followed by the disappointment of losing at home to Bradford in the Challenge Cup and now Wires are all the more determined to put the pressure on title-chasing Wigan and Saints until the last day of the season.

STONES BITTER PREMIERSHIP DOUBLE-HEADER

Seat tickets can now be ordered for the new-style end of season finale . . . The Stones Bitter Premiership Double-header.

Manchester United's Old Trafford soccer ground will house three hours of top class Rugby League on Sunday, 17th May.

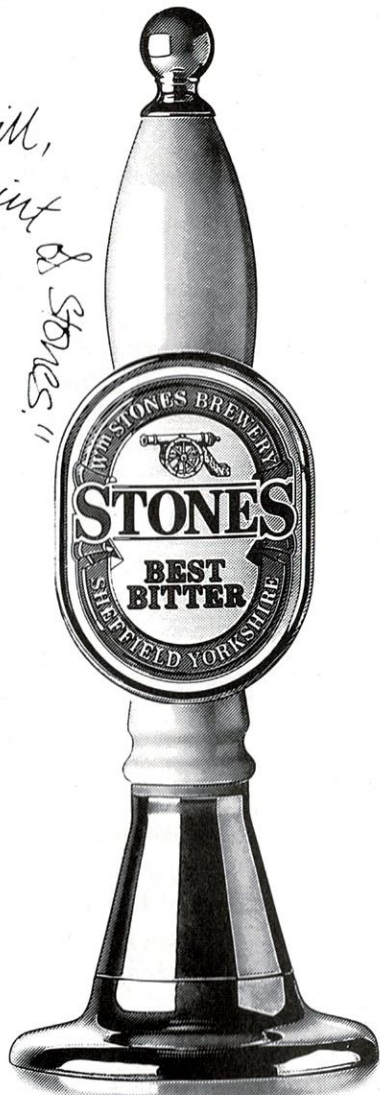
The new Second Division Premiership Final will kick off at 1:30 p.m. followed by the Stones Bitter Premiership Final at 3:30 p.m.

The double-header is a special "two for the price of one" promotion with seat tickets available priced only £7 and £6.

Please forward your order and remittance plus a stamped and addressed envelope to:—

**THE TICKET DEPARTMENT
THE RUGBY FOOTBALL LEAGUE
180 CHAPLETOWN ROAD
LEEDS LS7 4HT**

There was a young full back called Jones,
 Who said, "I can't understand
 why everyone moans,"
 Then they lost 40-nil,
 He said, "Bother, but still,
 I'll just have a quick pint



Stones. Sheer poetry.

**Sponsors of
 the Rugby League Championship and Premiership.**

Around the League... with Roughyed

Widnes, Rugby League's most consistent cup-fighting force, meet strongly fancied Halifax in the Silk Cut Challenge Cup semi-finals. When the draw was made, St Helens, the favourites, were paired against Leigh, the shock team of the last four. St Helens will play Leigh at Wigan on Saturday, while the Widnes-Halifax clash will take place at Headingley on 28th March. Widnes will be competing in their ninth semi-final since 1975 against a Halifax team which has gained strong support on the Wembley trail because of the inspiration and leadership of Aussie Chris Anderson, their 34-year-old player/coach.

St Helens, under the guidance of Alex Murphy, are bidding to win the cup for the first time since 1976. They should be favourites to reach the decider at Wembley on 2nd May having drawn a Leigh side which has struggled all season against the threat of relegation from the First Division.

* * * *

ELLERY HANLEY RECORD

Ellery Hanley equalled the Division One match record with five tries in Wigan's 60-6 home defeat of Bradford Northern. It was only Hanley's fourth match since the Great Britain Test back's switch to loose forward and the first time any forward has scored five tries in a Division. One match since the re-introduction of two Divisions in 1973. The backs who have scored five tries in a Division One match are Roy Mathis (St Helens) twice, Parry Gordon (Warrington), Peter Glynn (St Helens), Steve Fenton (Castleford), Steve Hartley (Hull K.R.), Kevin Meadows (Oldham), John Woods (Bradford N.) and John Basnett (Widnes).

SAINTS CHASE 1,000 POINTS

St Helens need 20 points to be the first to total 1,000 in all matches this season. Their total of 980 in 31 matches is made up of 638 in 20 Stones Bitter Championship matches, 334 in 10 Cup Ties and 8 against Australia. Their nearest challengers are Wigan who have totalled 880 in 31 matches. Both have a long way to go to beat the record of 1,436 by Leigh in 43 matches including 34 Division Two games last season.

POINTS SCORING RUN

David Noble took his points scoring run to 41 matches when he scored three goals and one try in the 18-12 home defeat of Blackpool. The forward has scored in every match since kicking three goals at home to Salford on 9th, February 1986. He is the only player to have scored in every match this season.

WINNING RUN

Whitehaven's winning run ended at 8 matches when they lost 41-12 at St Helens in the Third Round of the Silk Cut Challenge Cup. The longest winning run switched to St Helens, who had won 8 in a row made up of four Silk Cut Challenge Cup ties and 4 Stones Bitter Championship matches, but that run also ended with a 12-10 defeat at Castleford last Wednesday night.

LOSING RUN

Castleford ended their losing run of 5 matches with a 22-18 home League defeat of Oldham. The longest losing run is now shared by Batley and Huddersfield Barracudas. Each has lost four Division Two matches and one Silk Cut Challenge Cup tie.

SHEFFIELD EAGLES RECORD

Steve Lidbury needed one try to equal the Sheffield Eagles record of 16 in a season set by loose-forward Paul McDermot in their inaugural campaign of 1984-85. This is the winger's first season as a professional, having been signed from Lock Lane (Castleford) amateurs. He scored two tries on his debut in the opening match of the season, a 48-5 Division Two home defeat of Mansfield Marksman on 31st, August 1986.

Top Ten Try Scorers Top Ten Goal Scorers

ELLERY HANLEY (Wigan)	40	PAUL LOUGHLIN (St Helens)	138
DEREK BATE (Swinton)	25	PAUL BISHOP (Warrington)	92
GARRY SCHOFIELD (Hull)	23	COLIN WHITFIELD (Halifax)	89
PHIL FORD (Bradford N.)	22	MARTIN KETTERIDGE (Castleford) ..	78
HENDERSON GILL (Wigan)	21	DAVID NOBLE (Doncaster)	76
JOHN BASNETT (Widnes)	19	ALAN PLATT (Hunslet)	72
KEVIN PAPE (Carlisle)	19	JOHN WOODS (Bradford N.)	72
COLIN WHITFIELD (Halifax)	18	PAUL TOPPING (Swinton)	62
NEIL HOLDING (St Helens)	18	HENDERSON GILL (St Helens)	59
SHAUN EDWARDS (Wigan)	18	DAVID LOWDEN (Workington T.)	55

1986-87 Top Try Scorer receives £25 a try
from Greenall Whitley

1986-87 Top Goal Scorer receives £5 a goal
from Greenall Whitley

SLALOM LAGER ALLIANCE TABLES

	P	W	D	L	FOR			AGAINST			PTS
					Gls	Trs	Pts	Gls	Trs	Pts	
ST HELENS	16	13	0	3	1-58	87	465	1-29	41	223	26
WIGAN	17	13	0	4	0-55	92	478	0-32	50	264	26
WARRINGTON W.	19	11	1	7	3-72	85	487	2-45	54	308	23
WIDNES	17	11	0	6	1-67	82	463	2-47	61	340	22
CASTLEFORD	16	11	0	5	2-53	64	364	0-46	54	308	22
HULL K.R.	19	11	0	8	6-60	62	374	2-45	72	380	22
LEEDS	19	8	1	10	1-62	77	433	1-64	69	405	17
SALFORD	13	7	0	6	2-36	40	234	2-32	38	218	14
HULL	18	6	1	11	0-37	47	262	3-59	56	345	13
HALIFAX	16	5	2	9	1-34	42	237	1-46	63	345	12
LEIGH	17	6	0	11	1-46	46	277	2-63	75	428	12
BARROW	18	3	3	12	0-34	49	264	0-68	86	480	9
WAKEFIELD	19	3	0	16	0-46	44	268	2-84	98	562	6

	P	W	D	L	FOR			AGAINST			PTS
					Gls	Trs	Pts	Gls	Trs	Pts	
SWINTON P.	21	21	0	0	2-91	121	668	5-25	33	187	42
HUNSLET	20	15	1	4	4-67	75	438	2-31	35	204	31
WHITEHAVEN	19	13	0	6	4-72	89	504	3-48	50	299	26
BRADFORD N.	18	11	2	5	7-56	64	375	6-35	41	240	24
YORK	19	11	1	7	3-61	74	421	3-39	47	269	23
FEATHERSTONE R.	20	11	1	8	8-47	67	370	3-60	57	351	23
BATLEY	19	10	1	8	1-50	39	257	3-53	67	377	21
OLDHAM	18	10	0	8	1-66	74	429	5-42	43	261	20
WORKINGTON	20	9	0	11	6-47	58	332	3-50	64	359	18
HUDDERSFIELD	21	6	1	14	4-27	42	226	4-72	88	500	13
CARLISLE P.	14	4	1	9	6-26	34	194	6-36	50	278	9
BRAMLEY	19	3	0	16	4-24	27	160	3-62	67	395	6
DEWSBURY	17	2	0	15	0-23	25	146	3-64	81	455	4
KEIGHLEY	17	1	0	16	1-32	35	205	2-72	101	550	2

DATE	OPPONENTS	O.R.L.F.C. CLUB SPONSOR	MATCH SPONSOR	PROGRAMME SPONSOR	MATCHBALL SPONSOR	TEAM SPONSOR	COMPETITION
14-9-86	LEIGH Lancs. C.C.	Seddon Atkinson Ltd	Target Finishing Oldham	Salford Automatics Ltd	J. Bowden Ltd Oldham	Fashion Craft Middleton	Grünhalle Lager
21-9-86	HULL K.R.	Seddon Atkinson Ltd	Fairway Rubber Salford Automatics	Salford Automatics Ltd	Harveys (Nissan) Oldham	Lawrence Perrins Ltd., Oldham	Stones Bitter Championship
24-9-86	WORKINGTON Lancs. C.C.	Seddon Atkinson Ltd	Frank Knowles Ltd., Royton	Salford Automatics Ltd	B.C.C. Oldham	H. Ashworth Manchester	Grünhalle Lager
1-10-86	WIDNES Lancs. C.C.	Seddon Atkinson Ltd	Grünhalle Lager	Salford Automatics Ltd	Barry Bromley Weir Hotel, Bacup	—	Grünhalle Lager
5-10-86	WIDNES	Seddon Atkinson Ltd	F.D. Kitchens Prestwich	Salford Automatics Ltd	B.C.C. Oldham	Bosch Services Middleton	Stones Bitter Championship
2-11-86	BARROW	Seddon Atkinson Ltd	Austin Timber Oldham	Salford Automatics Ltd	M.A. Appleton Preston	Monty's Bar Oldham	Stones Bitter Championship
4-11-86	AUSTRALIA	Seddon Atkinson Ltd	Matthew Brown Ltd	Salford Automatics Ltd	Britvic Ltd Leeds	Halifax Building Soc., Oldham	Tour Match
16-11-86	ST HELENS	Seddon Atkinson Ltd	Bardsley Cleaning, Ashton	Salford Automatics Ltd	N.W. Decolling Warrington	Guttenberg International Rawtenstall	Stones Bitter Championship
30-11-86	BRADFORD J.P.S.T.	Seddon Atkinson Ltd	John Player	Salford Automatics Ltd	Fairway Rubber Manchester	Sat-Tel (UK) Ltd Oldham	John Player
14-12-86	HALIFAX	Seddon Atkinson Ltd	Harveys (Nissan) Oldham	Salford Automatics Ltd	F.D. Kitchens Prestwich	Tyson's Medical Indust. Health Ltd, Manchester	Stones Bitter Championship
26-12-86	SALFORD	Seddon Atkinson Ltd	Saffron Construction Co Oldham	Salford Automatics Ltd	H.B.S. Builders Merchants, Bury	Leslie Powell Blazers, Manchester	Stones Bitter Championship
18-1-87	FEATHERSTONE	Seddon Atkinson Ltd	—	Salford Automatics Ltd	—	—	Stones Bitter Championship
4-2-87	WIGAN Silk Cut C.C.	Seddon Atkinson Ltd	Sponsor Silk Cut Donor: Blue Bird	Donor: Salford Automatics Ltd	Donor: Commercial Vehicles, Manchester	J. Knox Fairway & Grundy	Silk Cut Challenge Cup
14-2-87	ST HELENS Silk Cut C.C.	Seddon Atkinson Ltd	Sponsor: Silk Cut Donor: St Helens Glass	Donor: Salford Automatics Ltd	Donor: Peter Kendall Commercial Vehicles	J. Knox Fairway & Grundy	Silk Cut Challenge Cup
14-2-87	HULL	Seddon Atkinson Ltd	Harveys (Nissan) Oldham	Salford Automatics Ltd	B & H Decor Royton	George Dew & Co., Oldham	Stones Bitter Championship

NEXT HOME MATCH

BRADFORD

Sunday 15th March, 1987 kick off 3:00 p.m.

STONES BITTER CHAMPIONSHIP

	P	W	D	L	F	A	W	D	L	F	A	Pts
Wigan	19	9	0	1	337	65	8	0	1	186	73	34
St Helens	20	9	0	1	359	137	7	0	3	279	119	32
WARRINGTON	20	10	0	1	302	159	6	0	3	199	156	32
Halifax	21	20	0	2	295	165	4	1	4	148	172	29
Castleford	22	8	0	4	245	164	6	0	4	179	173	28
Widnes	19	8	0	2	267	156	3	0	6	142	212	22
Hull K.R.	20	8	0	3	192	150	3	0	6	121	182	22
Leeds	21	6	0	4	288	183	4	0	7	155	204	20
OLDHAM	20	7	0	2	209	150	3	0	8	196	242	20
Bradford N.	20	4	0	4	162	119	5	0	7	220	306	18
Hull	18	7	0	1	195	149	1	0	9	120	286	16
Salford	22	6	0	6	221	261	2	0	8	131	273	16
Barrow	21	4	0	7	183	194	1	2	7	159	252	12
Leigh	20	3	1	5	143	153	2	0	9	174	329	11
Featherstone	21	4	1	5	187	213	1	0	10	139	309	11
Wakefield	20	0	1	8	96	255	0	0	11	125	393	1

DISCO PUBS

Mine Hosts: Archie and Joan

BULLS HEAD

GEORGE STREET, OLDHAM. Tel: 624 7264 – Bed & Breakfast

Mine Hosts: Julie and Tommy

RASCALS BAR

MANCHESTER ROAD, WERNETH, OLDHAM

Contracts · Hospitals · Airports · Stations · 7 Seater Mini-Bus

SCHOFIELDS

330 4135/5527/1704/6003

Taxis & Private Hire

WE NEVER CLOSE

22 OLD STREET, ASHTON-UNDER-LYNE

First Division 1986-87	Barrow	Bradford	Castleford	Featherstone	Halifax	Hull	Hull K.R.	Leeds	Leigh	Oldham	Salford	St Helens	Wakefield	Warrington	Widnes	Wigan		
Barrow	■	18-14	14-24		12-23	16-17	24-6	16-23						12-34	38-13	9-6	16-18	8-16
Bradford	36-20	■	12-7	41-2	8-12				18-26	10-18							27-14	10-20
Castleford		46-18	■	16-7		16-6	16-10	12-14	19-8	22-18	20-21	12-10	42-16	18-24				6-12
Featherstone			16-18	■	16-16	18-12	0-14		50-16		16-6	8-44	27-10	22-29	14-48			
Halifax	40-14	20-4	12-16	34-8	■	28-16	24-18	23-8	43-24	20-14	18-8	20-19			13-16			
Hull	41-18	27-22		26-6	28-23	■		10-32	31-26						12-6			
Hull K.R.		12-30		36-14	14-0	29-6	■	10-6	35-20	6-4		4-36	22-11		18-0	6-23		
Leeds		4-12		33-12				42-7	■	26-12	20-26	46-10	20-40	46-4	16-54	35-6		
Leigh	9-9		6-12		20-28		8-12	20-8	■	40-12					22-17	18-20	0-35	
Oldham	32-20			20-16	18-20	24-18	28-12	14-12		■	34-18	17-18					22-16	
Salford	12-24	12-22	36-10	26-16		29-18	14-34		20-12		■	4-38	36-12	10-25	22-16	0-34		
St Helens		40-14		43-14	38-16	50-10			50-18	28-6	32-14	■	32-11	42-22		4-12		
Wakefield	14-14	22-32	12-40	2-29				14-28	6-12	10-54	10-16	6-30	■					
Warrington	24-20	31-10	20-26	32-15	18-10	42-10		20-6		22-18	42-14		28-18	■			23-12	
Widnes	26-14	14-36	29-20				26-8	35-10		44-10	13-12	16-10	48-14		■	16-22		
Wigan	18-6	60-6	16-6			34-7		30-8	31-0		42-12	62-10	4-6	40-4	■			

FOLLOW YOUR TEAM, HIRE . . .

THE PENNINE LOUNGE

For all Occasions

Hot & Cold Menus – Competitive Rates

MUMPS BRIDGE, OLDHAM

Contact Secretary I.T. Heathcote, tel. 0706-840810 or tel. 652-3831

OLDHAM RLFC FIXTURES & RESULTS 1986-87

		Opponents	Att.	F	A	1	2	3	4	5	6	7	8	9	10	11	12	13	14	15
Aug	31	Leeds	4,621	14	12	Atkinson ^{1T} IG	M'Barki	Foy ^{1T}	Warnecke	Taylor	Topliss	Ashton ^{2DG}	Jones	Flanagan	Clark	Hobbs ^{1G}	Hawkyard	Worrall	Kirwan ⁽¹⁰⁾	Nadiole ⁽⁴⁾
Sept	3	Halifax (7:30)	4,869	14	20	Atkinson ^{1T}	Sherman	Foy	M'Barki	Taylor ^{1T}	Topliss	Ashton	Clark	Flanagan	Hobbs ^{3G}	Hawkyard	Clawson	Worrall	Kirwan ^{D.N.P.}	Nadiole ⁽¹²⁾
	7	Warrington	4,000	18	22	Atkinson	Sherman	Foy	M'Barki ^{1T}	Taylor	Ashton	Kirwan	Clark ^{1T}	Flanagan	Hobbs ^{3G}	Clawson	Hawkyard ^{1T}	Worrall	Edwards	Nadiole
	14	Leigh L.C.C. 1	4,566	29	22	Atkinson	Sherman ^{1T}	Foy	M'Barki ^{1T}	Taylor	Topliss	Ashton	Clark ^{1T}	Flanagan	Nadiole ^{1T}	Clawson	Worrall ^{6G}	Raper	Edwards	Hobbs ^{1DG1T}
	21	Hull K.R.	4,069	28	12	M'Barki	Sherman	Hawkyard	Warnecke ^{1T}	Taylor ^{1T}	Topliss	Ashton	Clark	Flanagan	Nadiole	Worrall ^{3G}	Hobbs ^{1G1T}	Raper ^{1T}	Edwards	Clawson
	24	Workington L.C.C. 2 ...	3,412	46	13	M'Barki ^{1T}	Sherman	Foy	Warnecke ^{2T}	Taylor	Topliss	Ashton	Clark ^{1T}	Flanagan	Hobbs ^{7G1T}	Nadiole	Worrall ^{1T}	Raper ^{1T}	Hawkyard	Clawson
28	Leigh (3:30)	4,000	12	40	M'Barki ^{1T}	Sherman	Hawkyard	Warnecke ^{1T}	Taylor	Bridge	Ashton	Clark	Flanagan	Hobbs ^{2G}	Clawson	Worrall	Raper	Topliss	Casey	
Oct	1	Widnes L.C.C. s/f	5,601	16	14	M'Barki	Sherman ^{1T}	Bridge	Warnecke	Edwards	Topliss	Ashton	Clark	Flanagan	Hobbs ^{1T} 4G	Nadiole	Worrall	Raper	Kirwan	Hawkyard
Oct	5	Widnes	3,875	22	16	Edwards	Sherman	Hawkyard	Warnecke ^{1T}	Atkinson ^{1T}	Topliss	Kirwan	Jones	Hall	Clark ^{1T}	Hobbs ^{1T}	Clawson	Worrall ^{3G}	Ogburn	Casey
	19	Wigan L.C.C. Final	20,180	6	27	M'Barki	Sherman	Bridge ^{1T}	Warnecke	Atkinson	Topliss	Kirwan	Clark	Flanagan	Hobbs ^{1G}	Worrall	Nadiole	Raper	Hawkyard	Clawson
	26	Wakefield T. (3:30)	2,740	54	10	Edwards	Sherman ^{1T}	Foy ^{3T}	Warnecke ^{2T}	Taylor	Topliss ^{1T}	Bridge	Jones	Flanagan	Clark	Hobbs ^{6G}	Worrall ^{1G1T}	Raper ^{1T}	Ashton ^{1T}	Hawkyard
Nov	2	Barrow	3,306	32	20	Edwards	Sherman ^{1T}	Foy	M'Barki	Taylor ^{1T}	Warnecke	Ashton ^{1T}	Clark	Flanagan	Clawson	Hobbs ^{6G1T}	Worrall ^{1T}	Raper	Hawkyard	Nadiole
	4	Australia (7:30)	5,678	16	22	Edwards	Sherman	Foy ^{1T}	Warnecke	M'Barki	Topliss	Ashton	Clark	Flanagan	Clawson	Worrall ^{3G}	Hobbs ^{1G}	Raper	Hawkyard ^{1T}	Nadiole
	9	Hull K.R.	4,481	4	6	M'Barki	Sherman	Foy	Warnecke	Taylor	Topliss	Ashton	Clark	Flanagan	Clawson	Hawkyard	Nadiole	Worrall ^{2G}	Edwards	Marsden
	16	St Helens	5,752	17	18	M'Barki	Sherman ^{1T}	Foy ^{1T}	Warnecke	Taylor	Topliss	Ashton ^{1DG}	Clark	Flanagan	Clawson	Worrall ^{2G}	Hawkyard ^{1T}	Raper	Edwards	Nadiole
	23	Bradford N. (3:30)	4,060	18	10	M'Barki	Sherman	Foy ^{1T}	Warnecke	Taylor	Topliss	Bridge	Clark	Flanagan	Clawson	Worrall ^{1T} 3G	Nadiole	Raper ^{1T}	Lowndes	Jones
30	Bradford N. (J.P.S.)	5,642	12	22	M'Barki	Sherman	Foy ^{1T}	Warnecke ^{1T}	Atkinson	Topliss	Bridge	Clark	Flanagan	Clawson	Worrall ^{2G} 1T	Nadiole	Raper	Ashton	Lowndes	
Dec	14	Halifax	4,905	18	20	M'Barki	Sherman	Foy ^{1T}	Warnecke	Taylor ^{1T}	Topliss	Bridge ^{1T}	Jones	Flanagan	Clark	Worrall ^{1G}	Hobbs	Raper ^{1T}	Hawkyard	Clawson
	21	St Helens	6,821	6	28	Edwards	Sherman ^{1T}	Foy	Bridge	Taylor	Topliss	Ashton	Hobbs	Flanagan	Clawson	Worrall ^{1G}	Hawkyard	Raper	Atkinson	Hall
	26	Salford	4,011	34	18	M'Barki ^{1T}	Sherman	Foy ^{1T}	Bridge ^{1T}	Taylor	Topliss	Ashton ^{1T}	Clark	Flanagan	Clawson	Hobbs ^{1G}	Worrall ^{4G}	Raper ^{1T}	Edwards	Hall
Jan	1	Leeds	7,570	26	20	Bridge	Sherman	Foy	Warnecke ^{1T}	Taylor ^{1T}	Topliss	Ashton	Clark	Hall	Hobbs ^{3G}	Flanagan ^{2T}	Worrall	Raper ^{1T}	Nadiole	Clawson
	4	Hull	4,895	16	20	Trialist	Sherman	Foy ^{1T}	Bridge ^{1T}	Taylor ^{1T}	Topliss	Ashton	Clark	Sanderson	Hobbs ^{2G}	Worrall	Flanagan	Raper	Kirwan	Clawson
	18	Featherstone	2,719	20	16	Burke ^{1T}	Sherman	Foy ^{1T}	Bridge ^{1T}	Taylor	Topliss	Kirwan	Clark	Sanderson ^{1T}	Waddell ^{1T}	Hobbs ^{1T}	Flanagan	Raper	Edwards	Clawson
	21	Widnes	2,798	10	44	Burke ^{1G}	Sherman	Foy	Bridge ^{1T}	Taylor ^{1T}	Topliss	Kirwan	Clark	Sanderson	Waddell	Clawson	Flanagan	Raper	Edwards	Nadiole
Feb	4	Wigan (S.C.C.C.)	10,050	10	8	Burke ^{3G}	M'Barki	Foy	Bridge	Taylor	Topliss	Kirwan ^{1T}	Clark	Sanderson	Waddell	Worrall	Hobbs	Flanagan	Warnecke	Raper
	14	St Helens (S.C.C.C.)	7,698	14	24	Burke ^{3G}	M'Barki	Foy ^{1T}	Bridge	Taylor	Topliss	Kirwain	Clark	Sanderson	Waddell	Worrall	Hobbs	Flanagan	Warnecke	Raper ^{1T}
	22	Hull	24	18	Burke ^{5G}	M'Barki	Foy	Bridge	Taylor ^{1T}	Topliss ^{1T}	Kirwan	Hobbs ^{1G}	Sanderson	Waddell	Hawkyard ^{1T}	Raper	Flanagan	Warnecke	Sherman	
March	1	Castleford	3,947	18	22	Burke ^{2G}	Warnecke	Foy	Bridge ^{1T}	Taylor ^{1T}	Topliss ^{1T}	Kirwan	Clark	Sanderson	Waddell	Hobbs ^{1G}	Worrall	Flanagan	Hawkyard	Raper
	8	Featherstone																		
	15	Bradford																		
	29	Castleford																		
April	5	Barrow																		
	12	Leigh																		
	17	Salford																		
	20	Wigan																		

Appearances & Scorers

	APPS (inc. Subs.)	T	G	DG	PTS
ASHTON, R. (Now with Leeds RL)	18	3	—	3	15
ATKINSON, K.	7	3	1	—	14
BRIDGE, G.	17	8	—	—	32
BURKE, M.	6	1	14	—	32
CLARK, B.	26	3	—	—	12
CLAWSON, N.	21	1	—	—	4
EDWARDS, J.	14	—	—	—	—
FLANAGAN, T.	27	2	—	—	8
FOY, D.	23	13	—	—	52
HAWKYARD, C.	18	4	—	—	16
HOBBS, D.	23	6	45	1	115
JONES, W.	5	—	—	—	—
KIRWAN, P.	13	1	—	—	4
M'BARKI, H.	20	5	—	—	20
NADIOLE, T.	16	1	—	—	4
RAPER, S.	23	9	—	—	36
SANDERSON, I.	7	1	—	—	4
SHERMAN, P.	24	6	—	—	24
TAYLOR, M.	24	9	—	—	36
TOPLISS, D.	26	3	—	—	12
WADDELL, H.	6	—	—	—	—
WARNECKE, G.	20	9	—	—	36
WORRALL, M.	25	4	31	—	78
CASEY, L.	2	—	—	—	—
HALL, M.	4	—	—	—	—
LOWNDES, P.	2	—	—	—	—
MARSDEN, R.	1	—	—	—	—
OGBURN, J.	1	—	—	—	—
TRIALIST	1	—	—	—	—

**WHO'S
SCREWED
EVERY STUD
IN THE
OLDHAM
TEAM?**



SPONSORKIT 86-87

SINCERE THANKS TO
OUR SHIRT SPONSOR

H. M'Barki <i>sponsored by</i> Ray Hill Quality Butcher Watersheddings	W. Jones <i>sponsored by</i> D. Lord O.R.L.F.C.	C. Myler <i>sponsored by</i> G.S. & W. Watts Newsagents Watersheddings
D.Foy <i>sponsored by</i> G. Burgess O.R.L.F.C.	P. Lowndes <i>sponsored by</i> SANTI'S RESTAURANT Park Road	D. Finch <i>sponsored by</i> Neil & Glenda Dog & Partridge
M. Worrall <i>sponsored by</i> Frocks of Chappell Road & Tommy Field Market	P. Kirwan <i>sponsored by</i> DOG & PARTRIDGE Graham Williams	J. Ogburn <i>sponsored by</i> Jim Dickinson Unicorn Inn
R. Ashton <i>sponsored by</i> Bill The Pullet Inn Sholwer	M. Taylor <i>sponsored by</i> D. Turner New Museum Henshaw Street	M. Parrish <i>sponsored by</i> V. & C.R. Bowden Contractors
T. Flanagan <i>sponsored by</i> Two Counties Service Station Huddersfield Rd., Oldham	S. Raper <i>sponsored by</i> K. Platt Clarksfield Hotel	D. Topliss <i>sponsored by</i> Blue Bird Private Hire
D. Hobbs <i>sponsored by</i> FLOWER POT Alan Pearson	K. Atkinson <i>sponsored by</i> Schofields Taxis	A. Morrison <i>sponsored by</i> N.W. Storage Milnrow
G. Warnecke <i>sponsored by</i> Bee Unit 65 B.C.C.	N. Clawson <i>sponsored by</i> Paul Turner Quality Butcher Spring Street	C. Chisnall <i>sponsored by</i> Structural Steelwork Oldham
G. Bridge <i>sponsored by</i> Sandra's News Spring Street For your Rugby Leaguer	B. Clark <i>sponsored by</i> Harry Davies Halfway House Rochdale Road	P. Sherman <i>sponsored by</i> A.D. Broadbent Joiner

SUPPORTERS CLUB NEWS

President: Mr D. Blackburn, Chairman: Mr D. Pilkington, Vice-Chairman: Miss A. Collinge,
Treasurer: Mr T. Heywood, Secretary: Mrs J. Pilkington
Committee Members: G. Bown, L. Chadderton, S. Collinge, E. Crother, S. Doran, J. Bradley,
J. Gallagher, I. Gallagher, H. Heywood, M. Morgan, I. Pilkington, M. Pilkington, D. Pilkington,
J. Sagar, L. Wolstencroft

The Supporters Club and members would like to welcome all our friends from Warrington for today's match. Hoping for a good clean game. We would like to invite all home and away supporters to our canteens situated around the ground. The Souvenir Shop at the Pavillion End of the ground will be open throughout the match for sale of replica shirts, ties, badges etc.

The Programme Shop is situated near the scoreboard in the old bar.

Anyone interested in sponsoring the Rugby Queen Contest please contact any Committee member at any of our canteens. Full advertising is given to sponsor.

OLDHAM R.L.F.C. SOCIAL CLUB

Player of the Year Dance

Friday, 24th April, 1987

* * * * *

The Oldham Rugby Queen Contest

Friday, 28th August, 1987



C. J. Auto's

JET FILLING STATION
Moorside, Oldham

Tel: Chris for quote 061-626 9844

- ACCIDENT REPAIR WORK
- M.O.T. PREPARATION
- FULL SERVICING
- RESPRAYS
- WELDING
- ALL TYPES OF MECHANICAL WORK



WILD & GRIFFITHS

SURVEYORS · VALUERS · ESTATE AGENTS · AUCTIONEERS

23 QUEEN STREET, OLDHAM

Tel: 061-626 3471

Tel: 061-624 6024

OUR PROFESSIONAL SERVICE PROVIDES:

Wide experience in Residential Sales for all areas

Valuations for all Purposes · Structural Surveys

Residential Estate Management

Compulsory Purchase and Compensation Surveyors

Agents for Major Building Societies · Presale Valuations without obligation

12-14 ROCHDALE ROAD, ROYTON, OLDHAM

90 HIGH STREET, LEES, OLDHAM

45A MARKET STREET, SHAW

91 CHEW VALLEY ROAD, GREENFIELD

1062 MIDDLETON ROAD WEST, CHADDERTON

320 ASHTON ROAD, OLDHAM

5 PEEL STREET, MARSDEN

758 OLDHAM ROAD, FAILSWORTH

Tel: 061-624 2875

Tel: 061-620 2447

Tel: 0706 847657

Tel: Saddleworth 3663

Tel: 061-652 7228

Tel: 061-652 7229

Tel: Marsden 844252

Tel: 061-681 3316

Henry Hurdus Ltd.

Wholesalers of Mineral Waters,
Cordials, Squashes and
Bottled Beers

176 LONG LANE
HOLLINWOOD
OLDHAM

Tel: 061-681 1638

PROMPT PERSONAL
SERVICE

PUBS & CLUBS SUPPLIED

JAMES DUNKERLEY STEELS LTD.

Registered Office:

HOLYROOD SIDINGS,
SHAW ROAD, OLDHAM
OL1 4AN

NEW & RE-USABLE STEEL STOCKISTS

Telephone: 061-624 3168 & 024 8058

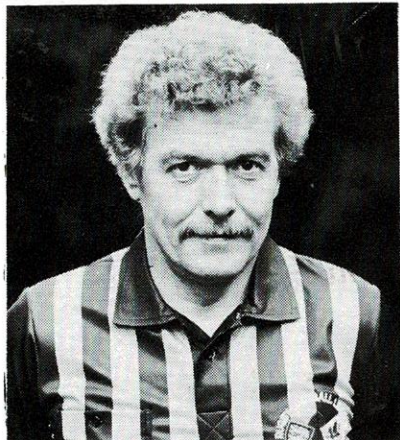
CHANNEL IRON · ANGLE IRON
TUBE & HOLLOW SECTION
UNIVERSAL BEAM & COLUMNS
ROLLED STEEL JOISTS
PLATES & SHEETS

PARK CAKES

A Slice of Tradition

The Park Cake Bakeries Limited

Ashton Road, Oldham, Lancashire OL8 2ND Telephone 061-633 1181 Telex 668738



Today's Referee:

G. F. TICKLE

Date of Birth: 26.10.45

Grade One: 1984-85

Oldham Games on Video

All Oldham games are available on Video (VHS/Beta/V2000)

Price £12.50 for one game OR £20.00 for two

Also available for Weddings, Party's, Pop Demo's etc.

CONTACT:

Easy Video Recording Services

34 Exford Avenue, Wigan, WN3 5JZ. Tel: Wigan 48399

ADAMSONS CRASH REPAIR CENTRE

THE MOTOR BODY ACCIDENT REPAIR
SPECIALISTS

APPROVED REPAIRERS FOR MOST
INSURANCE COMPANIES
GUARANTEED WORKMANSHIP



CASTLE MILL STREET
BOTTOM O' THE MOOR
OLDHAM



THE
MOTOR
AGENTS
ASSOCIATION

061-620 5982 / 624 1904

JUDGE FOR YOURSELF . . .
the quality of our services at

Marshall Pump Systems Ltd.

Distributors and stockists of pumps by:
JABSCO, MONO, MARCORE,
GRUNDFOS, WADE, IWAKI,
STUART TURNER, LUTZ,
STAHOPPE, TUTHILL,
WORTHINGTON, SIMPSON,
HOFFMA, LEE HOWL, MODERN

Rhodes Bank
Oldham OL1 1UA
Telephone: 061-678 6111
Telex: 668159

FOR AN EARLY
MORNING DELIVERY
SERVICE OF MILK
& DAIRY PRODUCE

We have gotta lotta bottle

**COUNTHILL
DAIRY** The Dairy on
your Doorstep

TELEPHONE: 633 3911

REGENT STREET
OLDHAM

The Dairy that's proud
of it's Service

North West Decoiling Ltd.

Steel Stockholders
Decoilers
and Shearers

Telephone:
0925 415111

Telex:
627135

For all your chemist sundries,
Cosmetics and toiletries

F. YATES

**NUMARK
CHEMIST**

(Proprietor: Malcolm S. Fagelman)

831 Hollins Road
Hollinwood
Oldham

Telephone: 681 1291

Established over 50 years

THE EDITOR TALKING

... on end of season targets

Oldham's programme for the remainder of the League season, completed by the rearrangement of the Wakefield game on Wednesday, 25th March, shows that a third of the matches will be crammed into the final six weeks. Six of the club's remaining nine games will take place here at Watersheddings with only three trips – to Barrow on Sunday, 5th April, to Wigan on Wednesday, 8th April, and to Salford on Good Friday, 17th April. The nine games left will be pushed into the period between tonight and Easter Monday, 20th April when Wigan are here for an all-ticket clash which will bring down the curtain on the Stones Bitter Championship.

There will be no game on Sunday, 22nd March. It was a blank on the original fixture list and it has proved impossible to rearrange a fixture for that day. Nevertheless, three of the home games are on Sundays – the best day for attracting crowds – and there is no doubt that the Wigan match at Easter will pull in the biggest League crowd of the season. Depending upon how badly Wigan need the points in their quest for the title, there could be a 10,134 full house crowd which would represent the largest League crowd at Watersheddings for 23 years. The previous best was also against Wigan in November, 1964, when a crowd of 10,365 witnessed a Wigan win by 18-9.

The Easter Monday game is all-ticket by order of the police and for safety reasons. Details of the ticket sales will be announced soon, if they have not already been put in the local press, so please book early for your tickets, so that we can gauge demand locally and decide how many tickets to send to Wigan on our behalf. Members – both standing and seating – are asked to exchange the match voucher (to be announced) before the game, so that entry on the day will be by way of a ticket to ease administration. Other home games are against Bradford on Sunday, Wakefield on Wednesday, 25th March, Castleford on Sunday, 29th April, and Leigh on Sunday, 12th April. Oldham, now in their fifth season of consecutive First Division football, are bidding to qualify for the top eight for the third time.

They finished eighth in their first season up (1982-83), tenth in 1983-84, fifth in 1984-85, and ninth last season. As a guide to how many points will be needed, the following teams have finished in eighth place over the last decade, with their points in brackets (starting in 1976 to last year):

Hull K.R. (34), Bradford (32), Leeds (31), Bradford (32), St Helens (32), St Helens (31), Warrington (30), Oldham (32), Leeds (33), Bradford (33), and Hull (32)

If we therefore take 34 points as the target, Oldham need to be aiming for seven wins out of their remaining games – a tall order. Six wins would appear to be the absolute minimum, so it is essential the side runs into a consistent spell over the next few weeks.

Pallet Racking and Shelving – Used

We buy and sell Dexion, Link, Hilo, Acrow, etc.

Free design service

Nationwide delivery and installation

LARGEST STOCKISTS OF GOOD EQUIPMENT IN THE UK

Contact

Dave Munton or Keith Potter

NORSTOR

TWO BRIDGES ROAD, NEWHEY,
ROCHDALE OL16 3SR
Tel: 0706 881212 Telex 635091

Prince George Hotel

193 RIPPONDEN ROAD
WATERSHEDDINGS
OLDHAM
Telephone: 061-633 1328

*Good Food
Lunch and Evenings
Bar Snacks, Lunches and
A La Carte*

(PARTIES CATERED FOR)

TRIP TO THE RACES
START WITH A
MAN-SIZED BREAKFAST

Bottom Building Contractors

Industrial or Domestic Work
Extensions – Double Glazing
Damp Proof Courses – Dry Rot
Pointing – Bricklaying
Rendering

All Types of Replacement
DOORS & WINDOWS
Grant Work, Insurance Work
Building Society Work
Complete Renovations
Local Authority Approved
Member of Federation of
Master Builders

**RING NOW FOR FREE
QUOTATION
061-620 1670**

INDUSTRIAL COMMERCIAL EQUIPMENT

*Reconditioned
Supermarket Trollys*

**T60 - £11.00 – T90 - £13.00
T100 - £15.00
T120 - £17.00**

Discount for Quantities

*Large number of
Garment Rails also available*

**Telephone:
0706 881212 (day)
061-620 6323 (evening)**

HARVEYS OLDHAM LTD

Bottom O'Th' Moor Huddersfield Road Oldham
Telephone 061 624 6042

HARVEYS OF OLDHAM

 **FOR NISSAN** 

 **NIKE**[®] *is Oldham RLFC*

Stocks of Replicas
available at:

**Romida Sports,
8 Curzon Street, Oldham
and Commercial Department**

PROGRAMME SPONSOR



SALFORD AUTOMATICS LTD

Franklin Industrial Estate, Franklin Street,
Oldham OL1 2AX

TELEPHONE: 061-665-2760/061-678-8057

COMMERCIAL CORNER

As from this week all LIFELINE members will have the same opportunity to take advantage of the special discount offers enjoyed by CASHLINE members.

A list of shops, stores, services etc. will be sent as soon as possible to you. These may also be obtained from the Club's shop and social club.

P. Foxcroft

Commercial Manager

LIFELINE

We are holding our Grand national Draw with the prize structure as follows:

1st place **£250,** 2nd place **£150**
3rd place **£75,** 4th place **£25.**

In addition each person who Draws a horse wins £10. On Grand National day a champagne buffet will be held in the social club everyone who has drawn a horse in invited along with a guest of their choice.

Last weeks LIFELINE draw was held at supercraft garments Ltd and the lucky number was 0879 Mr R. Ager of Ilkley.

Membership is still open so why not join us now.

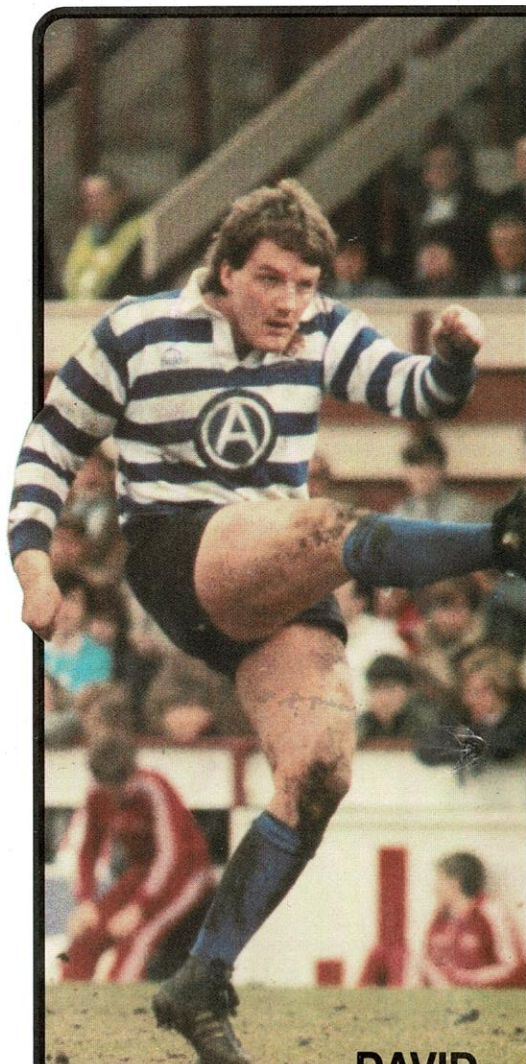


Photo Courtesy of
OLDHAM CHRONICLE

**DAVID
HOBBS**

CAPTAIN'S TALE

CAPTAIN'S TALE

by DAVID TOPLISS

Tonight we start a run of four consecutive home games which will be vital to our hopes of finishing in the top eight for a premierships play-off place.

It is generally believed that we need to win six of our remaining matches to be sure of a play-off spot, so we have to go all out to ensure that there are no mistakes in our home matches.

After tonight's game, we have Bradford here on Sunday, Wakefield here on 25th March and Castleford here on Sunday, 29th March.

Our defeat at Castleford was a disappointment because we had the ability to win at Wheldon Road, but perhaps paid for not getting over the line when we were all over them in the first 20 minutes.

We missed some chances and after dominating the early part of the match we found ourselves 16-2 down at half time, as Castleford gave us a bit of a lesson in finishing.

The second half, however, was nearly all Oldham. We scored three tries to one after half-time and the one try Castleford scored was a fortunate one in some ways because it followed a kick-ahead by two players before the touch down.

We showed in the final 20 minutes of the match how we could spread the Castleford defence wide and then split them down the middle by moving the ball around and getting deep.

It was a pity we did not play like that for the full match and we will have to work on trying to make sure that we stick to our pre-match plans for the full 80 minutes.

AUSTINS FOR TIMBER

NEW TIMBER LOWEST PRICES



Head Office: Medlock Sawmills, Shaw Road, Oldham. Tel: 061-652 5421. Telex: 666505
Depots at: Manchester 061-834 8505 • Rochdale 47208 • Ashton 061-308 3746
Oldham 061-620 2128 • Bury 061-761 6416 • Sale 061-973 9578