

Team News

SALFORD 38		OLDHAM 20
1 Steve Gibson	Full back	1 Paul Round
2 Tex Evans	Right wing	2 Mick Burke
3 Keith Bentley	Right centre	3 Colin Hawkyard
4 Peter Williams	Left centre	4 John Henderson
5 Adrian Hadley	Left wing	5 Kevin Meadows
6 Paul Shaw	Stand off	6 Chris O'Sullivan
7 David Cairns	Scrum half	7 Mike Ford
8 Steve Herbert	Field prop	8 Neil Clawson
9 Mark Moran	Hooker	9 Andy Ruane
10 Peter Brown	Blind prop	10 John Fairbank
11 Ian Gormley	Second row	11 Leo Casey
12 Mick Worrall	Second row	12 Ashley Gilbert
13 Mark Horo	Loose forward	13 Paul Taylor
14 Ken Jones	Substitute	14 To be announced
15 Ian Blease	Substitute	15 To be announced

Scrum	Penalties
1 2 3 4	1 2 3 4
5 6 7 8	5 6 7 8
9 10 11 12	9 10 11 12
13 14 15 16	13 14 15 16
17 18 19 20	17 18 19 20

Todays *mitre*
Matchball donated by



Scrum	Penalties
1 2 3 4	1 2 3 4
5 6 7 8	5 6 7 8
9 10 11 12	9 10 11 12
13 14 15 16	13 14 15 16
17 18 19 20	17 18 19 20

REFEREE
P. VOLANTE
(Batley)

TOUCH JUDGES
A. MEREDITH (red flag)
W.S. BLUNDEN (yellow flag)

MATCH BALL DONATED BY



J & J GAFFEY LTD.
For Central Heating & Bathroom
Suites
Telephone 061-736 8619

COLIN MOORE
8 LANGLEY CLOSE
SANDBACH
CHESHIRE

BURNABY INDUSTRIAL CLEANERS
STONE CLEANING/
RESTORATION
Tel: 848 8156

SEASON 1988-89

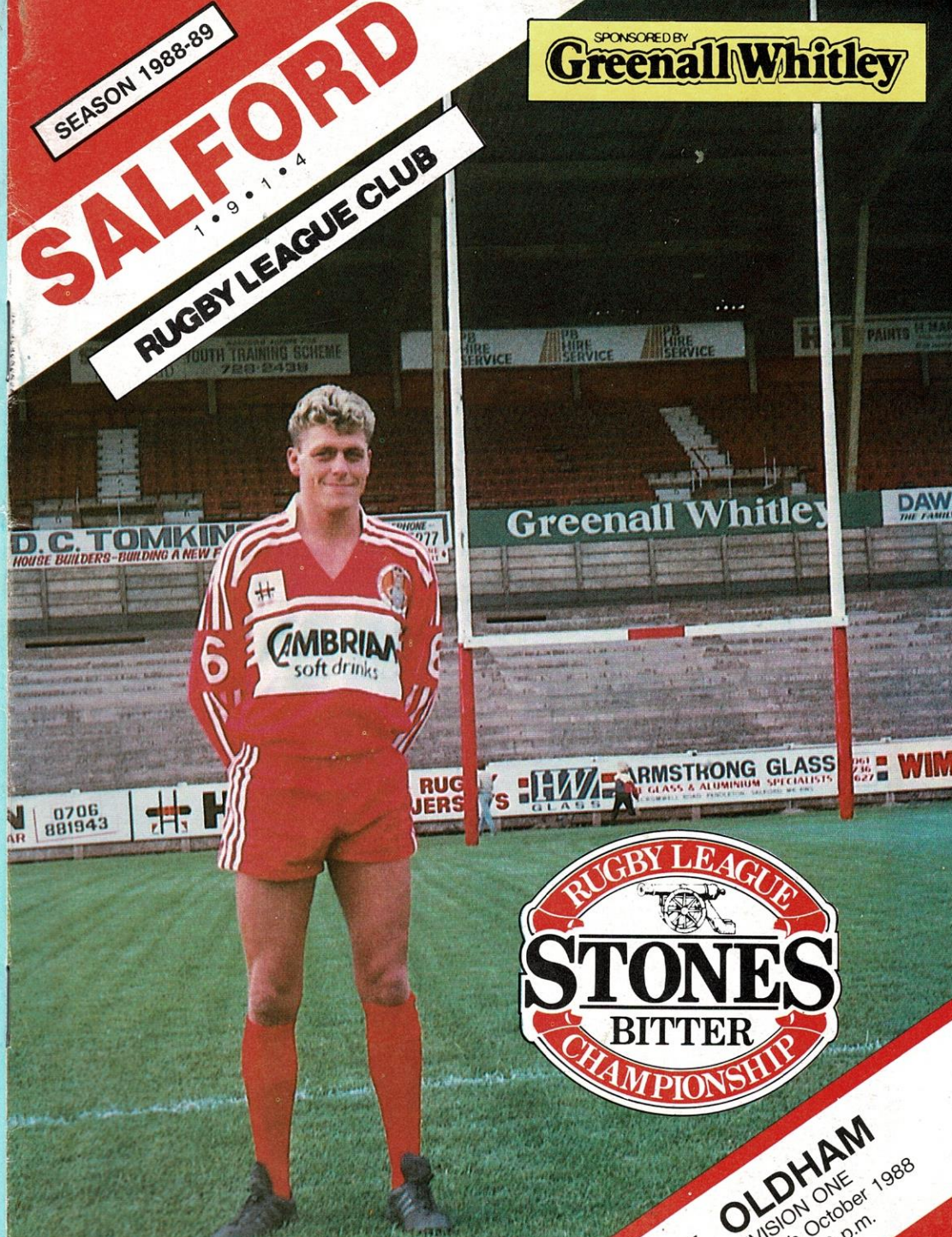
SALFORD


1914

RUGBY LEAGUE CLUB

SPONSORED BY

Greenall Whitley





TEAM SHIRTS SPONSORED BY

CAMBRIAN SOFT DRINKS

V. OLDHAM
DIVISION ONE
Sunday, 16th October 1988
K.O. 3.00 p.m.

60p

SALFORD FOOTBALL CLUB

COMPANY LIMITED

THE PAVILLION, WILLOWS ROAD, SALFORD M5 2FT. Tel: 061-737 6363

Directors:

J.A. WILKINSON (Chairman), **M. BLOOR** (Vice-Chairman)
L.J. BETTINSON S. BIBBY E. CRITCHLEY R. KANEEN
J. ROBINSON A. WHITE C.H. WYNNE

Hon. club surgeon: **MR. D.W.M. MACKECHNIE M.B., F.R.C.S.**

Hon. club doctors: **Dr. B. MILLER, Dr. A. BROWN**

Secretary: **G. McCARTY** Commercial Manager: **D. TARRY**

Coaching staff: **K. ASHCROFT** (Team Manager)

T. GRAINEY (Coach) **K. O'LOUGHLIN** (Player/Coach) **R. WELDING** ('A' Team)

R. WHITTAKER (Physiotherapist) **J. HOLROYD** (Groundsman)

N. ROBINSON (Timekeeper) **D. PLATT** (Match magazine editor)

President: **G.B. SNAPE**

Vice-Presidents: **T. BROOKS, I. MacLEAN, J & P POLYMER SERVICES,**
CHROMAL PLATING LTD. WILKINSON WELDING LTD., WELDING STAR LTD.
JENKINSON STEEL LTD., C.E.S. (HANDLING) LTD., MELROSE INSURANCE LTD.,
MONTON TRAVEL LTD., DELFMINE LTD., SAFFRON CONSTRUCTION LTD.,
ROBINSON BUILDERS LTD. J. COONEY, SOAMES CASINO, D. MCKENZIE, P. REYNOLDS.

CLUB HONOURS

Rugby League Championships: 1913-14, 1932-33, 1936-37, 1938-39, 1973-74, 1975-76

Runners up: 1901-02, 1902-03, 1903-04, 1933-34

Rugby League Challenge Cup: 1938. Runners up: 1900, 1902, 1903, 1906, 1939, 1969

Lancashire League Championship: 1932-33, 1933-34, 1934-35, 1936-37, 1938-39

Runners up: 1913-14, 1929-30, 1939-40, 1969-70

Lancashire Challenge Cup: 1931, 1934, 1935, 1936, 1972

Runner up: 1929, 1938, 1973, 1974, 1975

Lancashire Rugby Union Championship: 1892-93

Premiership Trophy Runners up: 1976

John Player Special Trophy Runners up: 1972-73

B.B.C. Floodlit Cup: 1974-75

CLUB RECORDS

Highest score: 78-0 v. Liverpool City, 2nd February 1907 (also biggest marginal win)

Highest score against: 5-63 v. Wigan, 17th January 1925

Biggest marginal defeat: 0-59 v. St. Helens, 1st December 1962

Most consecutive wins: 19th, March - September, 1933

Most matches without defeat: 20 (19 wins, 1 draw) March - September, 1933

Also: As a Rugby Union Club: 22 (16 wins, 6 draws) April 1887 - January 1888

and: 21 (13 wins, 8 draw) January - November 1886

Most consecutive defeats: 19. March - September, 1962

Highest attendance: 26,470 v. Warrington, 13th February, 1937

Highest fee paid: £100,000 for Adrian Hadley, September 1988

Highest fee received: £78,000 from St. Helens for D. Bloor, September 1988

CLUB CALL

RESULTS, REVIEWS, INFORMATION
LIFE LINE WINNERS
SUPER SEVEN WINNERS
UP-DATED EACH DAY
TEL: 0898-12-16-44

LIFELINE DRAW — £1,000 EVERY WEEK

Kevin Ashcroft Speaking



KEVIN ASHCROFT
SALFORD R.L.F.C.
TEAM MANAGER

*"Two points
are essential
this afternoon"*

Today's rearranged match against Oldham provides us with a chance to get back on course after our hiccup at Wheldon Road last Sunday. Decisions went against us in the first half which meant that instead of going in at the break comfortably in front, we had to settle for a 12-12 scoreline. Those of you who attended the game will agree that we were the better team before the interval but I hasten to add that we undid all our good work after the break when we made little headway against a strong Castleford pack.

I do not want to make any excuses for our second half performance but perhaps someone could explain to me first of all why Ian Gormley was sin-binned and also why there was a turnover after only two tackles midway through the second half?

It is no use dwelling on the game, though, it is over with and we must get back in the swing of things especially with our important Lancashire Cup Final game coming up next Sunday, when I hope you will all get behind the team and give them a Willows roar.

We gave a most competent display in beating Warrington in the semi-final and what pleased me most of all was our tackling which deprived them of any chance of scoring a try.

As you know, our two New Zealand Internationals Peter Brown and Mark Horo were due to arrive earlier this week. If they show no ill effects from their long journey, I will probably put them both in the line up against Oldham today.

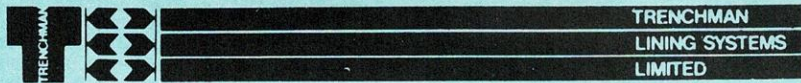
A victory this afternoon will put us in good heart for next week's big game when we will be contesting our first Lancashire Cup Final for thirteen years.



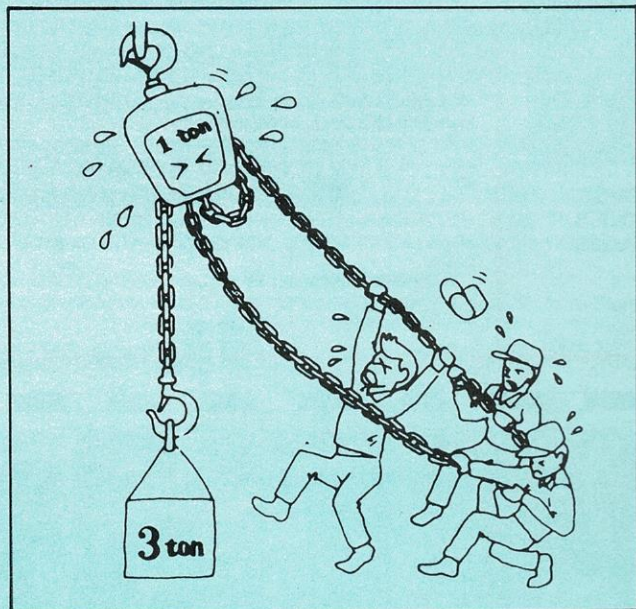
Ian Blease takes on the Castleford defence in last week's game.
(Photo by Kieran Platt)

SALFORD R.L.F.C. CLUB CALL — 0898 12 16 44

TODAY'S MATCH SPONSOR



LIFTING EQUIPMENT



DON'T STRUGGLE WITH YOUR LIFTING EQUIPMENT REQUIREMENTS

CALL IN THE EXPERTS WHO WILL HANDLE ALL SUPPLIES ALONG WITH ON SITE REPAIRS, TESTING & CERTIFICATION OF YOUR EXISTING EQUIPMENT

Authorised KUPLEX distributors

Unit 2, Moss Lane Ind. Est., Moss Lane, Heyside, Royton, Oldham OL2 6HR Tel: (0706) 881943 Tlx: 635391

WELCOME TO THE WILLOWS

LIFELINE DRAW — £1,000 EVERY WEEK

MATCH PREVIEW

This afternoon we welcome the Roughyeds, from Oldham, to the Willows, in a re-arranged league Division One fixture. We should have been entertaining Leeds, here, this afternoon but they are engaged in the Yorkshire Cup Final against Castleford at Elland Road. As Oldham had no fixture they stepped into the breach.

This will be our third encounter with Oldham this season, the other two meetings being at Watersheddings. The pre-season friendly in August was arranged for Terry Flanagan's Testimonial, a player who has given tremendous service to the Watersheddings club since he first joined them in their Colts side. At the age of 19, he was made the youngest skipper in Oldham's history, by the coach at that time, Graham Starkey, and then in 1984 he achieved the ultimate success in the game — a Down Under Tour.

He went on to make 4 appearances for Great Britain, 5 for the G.B. under-24 side and 3 for Lancashire.

Incidentally, Salford spoiled Terry's celebrations somewhat by winning that game by 20 points to 18, with both teams taking the chance to give several players a run out.

At the moment, Oldham are striving to climb up the table, their only league win being at home to Hull Kingston Rovers a fortnight ago. The 30 points to 16 victory was a great team performance but second row forward Ashley Gilbert should be singled out as he scored two crucial tries to seal the fate of the Robins.

Last season Oldham were worthy second division champions which enabled them to contest the Premiership play offs. After disposing of Keighley (34-24) and Springfield Borough (18-10), they went on to meet Featherstone Rovers, (who had recovered from a poor

start to finish as runners up) in the final at Old Trafford.

What a spectacle the Second Division Premiership Final provided for the 35,252 crowd. The game looked to be over as a contest when Oldham raced into a 22-0 lead after half an hours play but Rovers rallied to go in at half-time, 22-6 down.

The second half was a total reverse with Oldham completely on the defensive as Featherstone rallied to take the lead at 26-22. However, in the closing minutes Meadows scored a try under the posts and McAllister goaled to enable Oldham to lift the Trophy by 28 points to 26.

Last season's top try scorer was Des Foy with 21 touchdowns but the pacey centre, who has been out of action recently with a knee injury is keen to go to Australia and play in the Sydney League — at the time of going to press, it still was not clear as to whether or not he would sign a new contract at Watersheddings.

Another player who could be missing today is centre threequarter Charlie McAllister, who broke his jaw against Featherstone Rovers over a month ago. The former All Blacks trialist turned professional with Oldham last season after being banned from Rugby Union, when they found out he had taken part in a trial game. A big favourite with the Watersheddings crowd, he played for Newcastle Knights in the Sydney League, during the summer break.

Oldham's overseas contingent comprises of stand off Chris O'Sullivan, second row Ashley Gilbert and loose forward Paul Taylor, the latter having recently taken over the captaincy from scrum half Mike Ford.

Our second meeting with Oldham this season was a second round Grunhale Lager Lancashire Cup tie last month when we ran out winners by 18 points to 2 in front of a 5497 crowd. On a miserable night, Salford put the points on the board early on in the game and though Oldham pressed hard for long periods they could not pierce a stout Reds defence.

The last time that the teams met at the Willows was in a league game on the 17th April 1987, when Salford won a thriller by 36 points to 30.

Salford's points came from tries by Byrne 3, Austin 2, and O'Loughlin with 6 goals from Greg Austin. Oldham try scorers were Sherratt (2), Foy, Warnecke, Topliss and Edwards, with 3 goals from Mick Burke.

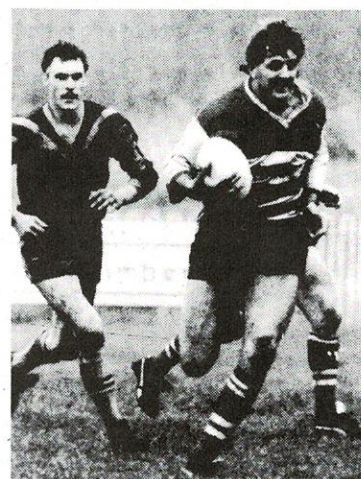
Last Sunday Oldham gained a worthy draw at Wakefield Trinity with a 10-10 scoreline, that after being down by 10 points to 2.

Salford best

Mar. 11th 1933 Salford 44 Oldham 0

Oldham best

Nov. 25th 1961 Salford 4 Oldham 50



PAUL ROUND

Programme donated by
NORMAN LEISURE

SALFORD R.L.F.C. CLUB CALL — 0898 12 16 44

Getting to know you . . .

DAVID BULLOUGH



Born: January 3rd 1959
Birthplace: Leigh
Marital status: Single
Children: None
Occupation: Landscape Gardener
Salford debut: March 15th 1987 v Barrow (away)
Signed from: Fulham
Other clubs: Leigh, Bramley, Huddersfield (on loan)
Representative honours: None
Best R.L. moment: Beating Leigh 14-10 at Hilton Park to assist Salford staying in the First Division.
R.L. ambition: To play at Wembley.
Biggest influence: Peter Jarvis (former Bramley coach)
Favourite ground: Headingley
Favourite T.V. show: Dallas, Taggart
Which person would you most like to meet? Mohammed Ali

Career at Salford

App.	Sub.	T.	G.	D.	Pts.
20	7	1	—	—	4



TRENCHMAN TROPHY

Voting for the home match against Warrington (5-10-88) was:-

3 pts:- PAUL SHAW		2 pts: MARK MORAN		1 pt: TEX EVANS	
Steve Gibson	8pts	Keith Bentley	2pts		
Paul Shaw	5pts	Mick Worrall	2pts		
Mark Moran	5pts	David Cairns	1pt		
Tex Evans	3pts	Adrian Hadley	1pt		
Peter Williams	3pts				

Down Memory Lane

Salford 15 Oldham 13

(Friday 9th September 1966)

In perfect conditions, Salford wrecked Oldham's unbeaten record with this narrow victory. The three tries to one success was well deserved but the Reds made life hard by giving away numerous silly penalties, which could have been costly.

The Reds opened brightly and following some pressure on the Oldham defence, Argent passed to stand-off Brennan who scampered over for a try. Winger Sims added the goal to make it 5-0.

Six minutes later Southward linked up with the attack to score a fine try. (8-0). Sims was unable to convert but made up for it with a penalty goal to put the home side further ahead (10-0).

Oldham were finding it hard to make any inroads at all on a tight Salford defence but when the Reds did stray offside, Curry stepped up to kick the penalty (10-2).

After the break Oldham got well on top and another Curry penalty put the visitors within striking distance. Then Fletcher sent Irving away to score a try to which Curry added a goal. (10-9).

Salford were finding possession hard to come by but when they finally did achieve this, Brennan took a quick tap penalty and caught Oldham napping. He darted over for the touchdown and Sims made it 15-9.

With a six points leeway, the Reds decided to become generous and gave away a string of daft penalties with Curry converting two of them to set up a stirring finale at 15-13.

In the closing seconds of the match, Curry tried to salvage the game with a couple of attempted drop goals but fortunately for the Reds, he was off target.

Teams were as follows:-
 Salford: Southward; Dorning, Bettinson, Critchley, Sims; Brennan, M. Taylor; Collier, Smart, Ogden, Argent, Breen, Hughes. Subs: Murphy, T. Wilson (neither played).
 Tries: Brennan (2), Southward. Goals: Sims (3).

Oldham: Curry; Elliott, McCormack, Donovan, Simms; Warburton, Canning; Wilson, Taylor, Fletcher, Smethurst, Irving, Mooney. Subs: McLeod, Mumberson (for Smethurst)

Try: Irving Goals: Curry (5)
 Referee: R. Nealons (Barrow)
 Attendance: 6,000

Spectrum Plastics

Mersey Street,
 Stockport SK1 2HX
 Tel: 061-480 7202

Membership Cards for:

- Libraries • Visitor Passes • Night Clubs • Hospitals • Discount Warehouses • Leisure Centres • Snooker, pool, squash, tennis, football, rugby and all sports clubs • Bingo Halls
- Exhibition Passes • Colleges • Universities • Airports • Hotels
- Holiday Companies • Travel Agents

Suppliers of your
 'Lifeline' membership cards.

Jenkinson Steel Ltd.
 Steel Stainless Steel Brass Copper Bronze Aluminium & Fasteners

JENKINSON STEEL LTD

Ferrous & non-Ferrous
 Metal Stock Holders

All Facilities Available

24 Hr Delivery Service

Tel: 061-789-4220

Rocky Lane Monton Eccles

LIFELINE DRAW — £1,000 EVERY WEEK

SALFORD R.L.F.C. CLUB CALL — 0898 12 16 44

OLDHAM

MICK BURKE (Full back): Won almost every honour in the game with Widnes and joined Oldham in a £40,000 deal last January. The only player to have won both the Lance Todd Trophy and the Harry Sunderland Trophy for the Man of the match in a championship final.

PAUL ROUND (Full back): Joined Oldham at the start of last season for a tribunal fixed fee of £60,000. Usually a second row forward but has recently been tried in the full back and wing roles.

RICHARD IRVING (Wing): Snapped up by Oldham from Huddersfield amateur circles. Won both G.B. and Yorkshire amateur honours. Oldham expects great things from him as he gains experience.

COLIN HAWKYARD (Centre): Former second row player who has been playing in the centre. Due for a benefit next year, given tremendous service to Oldham.

DES FOY (Centre): Toured Down Under in 1984, younger brother of Martin Foy. Originally played for Widnes but figured in the deal that took Brian Hogan back to Naughton Park. G.B. International, very pacy centre.

JOHN HENDERSON (Centre): Recent £50,000 signing from Leigh. Represented Lancashire. The 24 year old is rated as one of the fastest inside backs in the game and he scored 90 tries in almost 150 games for the Hilton Park Club.

KEVIN MEADOWS (Wing): Experienced wingman who has played for St. Helens and Warrington. Joined Oldham, with team mate Steve Peters, last season. Scored the vital try that won the Premiership Trophy for Oldham last campaign.

CHRIS O'SULLIVAN (Stand off): Clever footballer, who came over from the Canberra club in Australia. Match winner on his day, who made a try scoring debut in the 64-2 thrashing of Workington Town.

IAN BATES (Scrum-half): Nephew of Dewsbury duo of Alan and John Bates.

Good pair of hands and a capable defender, despite his size.

MIKE FORD (Scrum-half): Former Wigan player who spent several good seasons at Central Park. Played in the magnificent Wembley Final against Hull, alongside Brett Kenny. Moved on to Leigh, then to Oldham. Toured Down Under this summer.

NEIL CLAWSON (Prop): Son of former G.B. player Terry Clawson. Neil was a £5,000 bargain buy from Featherstone Rovers two years ago. Regular pack member last season.

JOHN FAIRBANK (Prop): Signed for Oldham in the package deal that took G.B. prop Hugh Waddell to Leeds. Hails from a famous family and looks to be an exciting prospect.

ANDY RUANE (Hooker): Recent signing, who not only is a good hooker but a very useful goal kicker. Originally played for Widnes, but found his chances limited.

IAN SHERRATT (Prop): Local lad who joined Oldham from Bradford Northern. Big, strong, front row player who has spent the summer playing for Stanthorpe, a Queensland Country Club.

ASHLEY GILBERT (Second row): Australian, who scored 2 tries in Oldham's first league win of the season against Hull K.R. Formerly with the Canberra side, Down Under. He also was a try scorer in his debut against Workington Town.

TERRY FLANAGAN (Loose forward): In his benefit year. He has made more than 300 appearances for his home-town club. Former captain, first appointed at the age of 19. Has County, Test and Tour honours.

PAUL TAYLOR (Loose forward): Newly appointed captain, who made his debut against Featherstone Rovers last month. Makes up the Overseas contingent and is himself a very experienced Sydney First grade player.



SOLVITOL LIMITED

Solutions to all your cleaning problems

1 Brockwell Road
Crowther Industrial Estate
District 3, Washington
Tyne & Wear
Tel: 091-417 9921

Local Office Tel: 061-485 1994



**Rugby Jerseys
and Shorts**

**HALBRO
SPORTSWEAR
LIMITED**

Manufacturers of athletic sportswear
since 1919

RUGBY HOUSE,
HAMPSON STREET,
HORWICH, BOLTON.
Tel: (0204) 66476/67365

**mitre®
-official
suppliers
of points
for today's
game**



MULTIPLEX



KIWI



QUALITY COMES FIRST

ACTION PICS v. CASTLEFORD

Sunday 9th October 1988
CASTLEFORD 38 SALFORD 12



STEVE HERBERT in the thick of things at Castleford. (Photo by Kieran Platt)



IAN GORMLEY is stopped in his tracks at Wheldon Road. (Photo by Kieran Platt).

LIFELINE DRAW — £1,000 EVERY WEEK

AUSTIN WILKINSON & SONS LTD.

Haulage Contractors
20—40ft. Containers Handled

REGULAR SERVICES — MERSEYSIDE — MIDLANDS
LONDON — NORTH EAST
1 TON MINIMUM — 25 TON — FULL LOADS

KNOTT STREET, SALFORD M5 2EF

Tel.: 061-736 2623 or 5006

TODAY'S MATCH VIDEO SPONSORED BY

P.B. HIRE SERVICE LTD.

CIRCLE HOUSE
LOSTOCK ROAD
DAVYHULME
MANCHESTER M31 1SU
Tel: 061-747 4212

TOP QUALITY MATCH VIDEOS OF ALL HOME & AWAY MATCHES
WITH FULL COMMENTARY, INTERVIEWS & ACTION REPLAYS

FOR HIRE AND SALE

Call to the Pools office for further details
or phone 736 6564

SALFORD R.L.F.C. CLUB CALL — 0898 12 16 44



'a taste for sport'

CAMBRIAN SOFT DRINKS LTD., DERBY STREET BOLTON BL3 6JF

Bits and Pieces

ROTHMANS RUGBY LEAGUE YEARBOOK 1988-89 Raymond Fletcher & David Howes

Australia's Premiership Grand Final and State of Origin inter-state series are put under the International spotlight in the 1988-89 Rothmans Rugby League Yearbook.

The first-ever 20-year dossier of the French National side, plus reviews of the 1987 Tours of Britain by Papua New Guinea and Auckland and New Zealand's visit to Australia, are other round-the-world features.

The Sydney Grand Final analysis details 11 British players who have starred in the Down Under showpiece starting with Dick Huddart in the victorious St. George side in 1966. Only one of the 11 — Mervyn Hicks — did not also play in the Rugby League Challenge Cup Final, the Yearbook also listing the seven Australians who have completed the Sydney-Wembley Final double.

Launched in July 1980, the celebrated State of Origin meetings between New South Wales and Queensland are chronicled with results, records, teams and players' registers.

Illustrated with nearly 150 photographs, the Rothmans Rugby League Yearbook is again compiled by Raymond Fletcher of the Yorkshire Post and Rugby League Public Relations Officer, David Howes.

ROTHMANS RUGBY LEAGUE YEARBOOK is published on 8th September priced £10.95, available from all good Bookshops or by post, (plus £1.25 postage and packing) from the Public Relations Department, The Rugby Football League, 180 Chapeltown Road, Leeds, LS7 4HT.

STONES BITTER CHAMPIONSHIP DIVISION ONE

	P	W	D	L	F	A	Pts
Castleford	6	5	1	0	142	65	11
St. Helens	6	4	1	1	122	112	9
Widnes	6	4	0	2	163	67	8
Leeds	6	4	0	2	140	98	8
Salford	6	4	0	2	130	142	8
Wakefield	6	3	1	2	99	118	7
Bradford N.	6	3	0	3	169	127	6
Wigan	6	3	0	3	138	118	6
Warrington	6	3	0	3	108	104	6
Halifax	6	2	0	4	64	97	4
Featherstone R.	6	2	0	4	110	197	4
Oldham	6	1	1	4	115	136	3
Hull K.R.	6	1	0	5	95	150	2
Hull	6	1	0	5	72	136	2

GLYNN, WILTSHIRE, MOVE TO CHORLEY BOROUGH

Early this month Peter Glynn and Roy Wiltshire joined Chorley Borough in a £5,000 deal, with the former making a try scoring debut against Barrow, in his new team's 18 points to 16 defeat.

Peter Glynn joined Salford from St. Helens in a straight swap for Steve Rule in July 1983. Although he never played in a Test match for G.B. he was a Down Under Tourist in 1979. He did however play for England twice and Lancashire on 6 occasions. Whilst at Salford Peter made 144 appearances (incl. 14 as sub) and scored 24 tries, 1 goal and 6 drop goals for a total of 104 points.

Roy Wiltshire joined Salford in February 1986 after a short loan period from Rochdale Hornets. A strong finisher, he made 33 appearances for the Reds and scored 10 tries.

CLUB CALL NEWS



"Referees and coaches should get together more often. We must put over our point of view and the referees theirs, both sides have a contribution to make because we are in the entertainment business. We should hold monthly meetings and I will gladly give up my time to meet our referees".

Kevin Ashcroft

"I don't think I should have been in the "training" squad for the Australian tour, but having been put in that position then you would obviously assume to be sent over if there was an injury in your position".

Peter Williams

"As a Warrington lad it was perhaps more satisfying for me to win that semi final. It's always good to beat your home town team".

Tex Evans

"This will be my 2nd Lancashire Cup Final in 3 years and I'm going to make sure I don't get another runners-up medal."

Mick Worrall

"The resurgence at the Willows is great to see. John Wilkinson and his board have worked hard to bring success to Salford, and I'm delighted to see the Red Devils back as a force to be reckoned with".

Billy Thompson, who recently joined Club Call and will be giving his views on our games.

Enjoy your rugby,

STEVE McILWHAM

SALFORD R.L.F.C. CLUB CALL — 0898 12 16 44

Reflections

Season 1982-83

Mal Aspey was appointed as coach at the Willows prior to the new campaign with the sole task of getting the Reds back into the First Division. Installed as favourites in 1981-82, Salford were expected to skate it but missed out in the end and now had to start all over again, the hard climb into the top flight. One of Aspey's first signings was former Widnes and St. Helens back row forward George Nicholls, a seasoned G.B. campaigner who had captained newcomers Cardiff City in their inaugural season in R.L. football.

A new innovation for the season was that all our home games were to be on a Sunday afternoon instead of the usual Friday night practice.

The season opened with a 35-18 victory at Elland Road, the new home of Hunslet, with 3 of our tries coming from prop forward Mal Yates.

Our first three matches saw the team draw winning pay but they bowed out in the Lancashire Cup by 18 points to 13 at Central Park against Alex Murphy's Wigan side.

The match at Wigan was notable for winger Maurice Richards, grabbing his 293rd try for the club, so beating Barney Hudson's longstanding record of 292 touchdowns.

Victories in the league followed, with wins at Batley (23-9) and Huyton (22-12) plus a home triumph against Rochdale Hornets (26-11) before we encountered our first league defeat of the season, at home to Fulham, by 26 points to 13. The Londoners were captained by former Reds prop Tony Gourley.

This defeat shook us out of any complacency and we went on to register wins at Cardiff City (28-18) and Blackpool Borough (26-4), coupled with home victories against Huddersfield (22-6), Dewsbury (40-8) and York (20-16). The Dewsbury match marked the debut of new signing Mick McTigue, a £12,500 bargain buy from Leigh and he immediately became a hit with the Willows fans by scoring two tries.

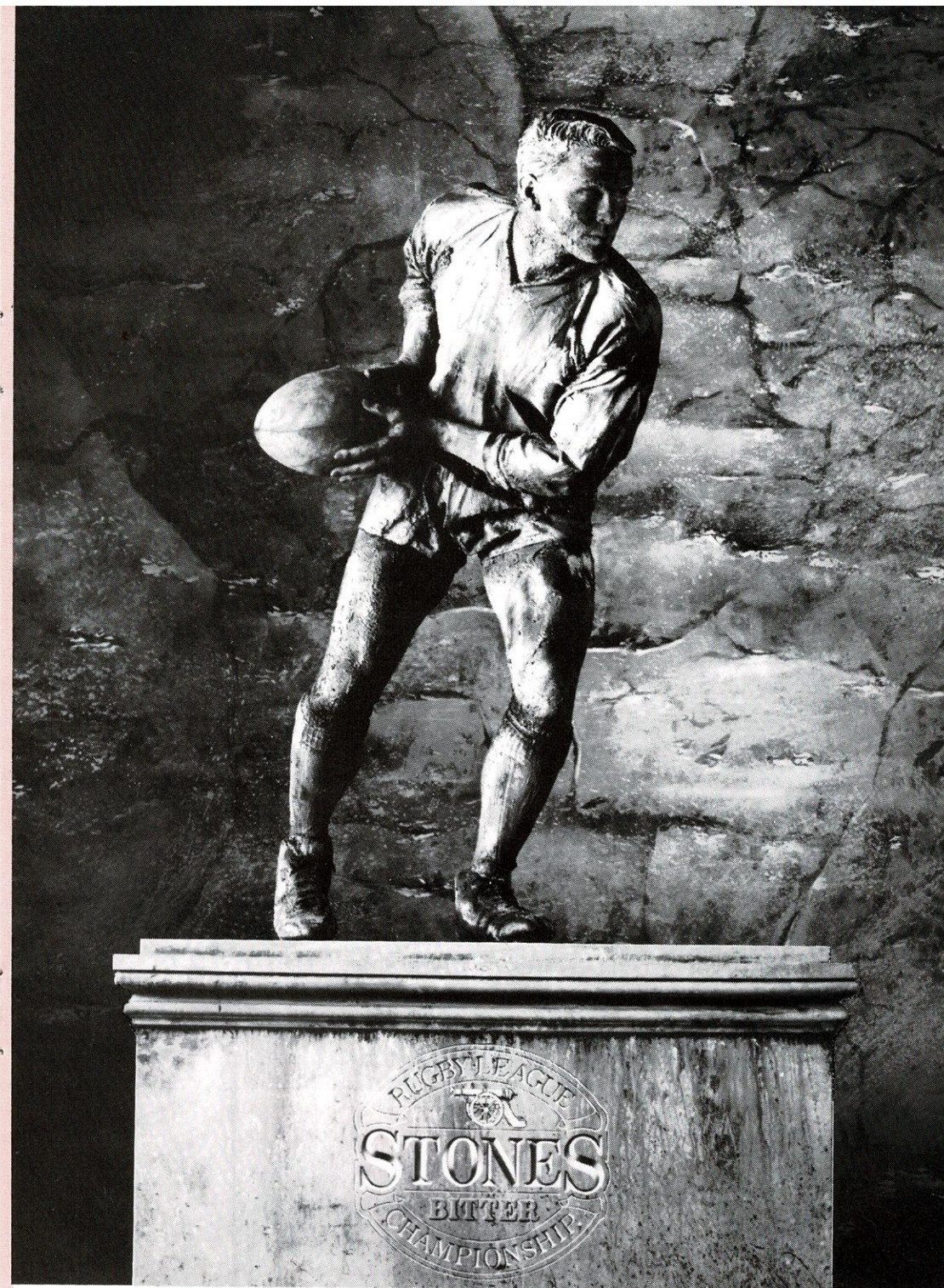
The John Player Trophy saw Salford gain victories against Hunslet and Huddersfield before we finally went out at home to Wigan by 5 points to 4 in a third round match here at the Willows. Hooker Paul O'Neill's late try against Hunslet enabled him to create a new club record of 12 tries in a season by a hooker. (By the end of the season he increased his tally to 19 tries!). Everything was going to plan in the league, even though we suffered an 8 points to 7 reverse at Whitehaven. The very next match saw us beat Doncaster by 55 points to 5, with 3 tries coming from Paul Fletcher, then it was the turn of York, Cardiff city and Batley to be sent packing before Fulham completed the double over us (17-9) down at Craven Cottage, our very first visit to their London headquarters. A marvellous 1st round Challenge Cup victory by 12 points to 5 against first division Leigh at the Willows put us into a second round tie with Featherstone Rovers but the visitors went through by 17 points to 11. Five consecutive victories followed before Wakefield Trinity completed the double over us by winning 19-10 at the Willows. The victory against Hunslet by 21 points to 15 at the beginning of April secured a third spot in the league for us, which meant automatic promotion behind Fulham and Wakefield Trinity with Whitehaven gaining the fourth spot.

Incidentally, Fulham (champions) and Wakefield Trinity (runners up) were the only teams to gain the double over us.

CLUB TOP TRY SCORERS: Paul O'Neill 19, Ged Byrne 18 Ron Smith 15
CLUB TOP GOAL SCORERS: Ron Smith 76, Steve Rule 58.

REPRESENTATIVE HONOURS

GREAT BRITAIN: S. Nash G.B. UNDER 24s: R. Smith
WALES: M. McJennett (on loan to Salford from Barrow)



MAJOR SPONSOR OF THE RUGBY LEAGUE.

LIFELINE DRAW — £1,000 EVERY WEEK

SALFORD R.L.F.C. RESULTS AND SCORERS

SEASON 1988-89



AUGUST

Sun. 28 Hull K.R. H 3.00 W 24-14 3,519

SEPTEMBER

Sun. 4 Bradford N. A 3.30 L 18-42 4,403
 Sun. 11 Warrington H 3.00 W 25-18 5,809
 Sun. 18 Whitehaven LC1 H 3.00 W 42- 8 2,551
 Sun. 25 Wakefield T. A 3.30 W 36-18 4,270
 Wed. 28 Oldham LC2 A 7.30 W 18- 2 5,497

OCTOBER

Sun. 2 Widnes H 3.00 W 15-12 6,688
 Wed. 5 Warrington LC Semi H 7.30 W 15-2 7,316
 Sun. 9 Castleford A 3.30 L 12-38 6,151
 Sun. 16 Oldham H 3.00
 Sun. 23 ???? LC Final (St Helens) 3.00

NOVEMBER

Sun. 6 St. Helens A 3.00
 Sun. 13 Halifax (JPS 1) A 3.00
 Sun. 20 Wigan H 3.00
 Sun. 27 J.P.S. 2

DECEMBER

Sun. 4 Featherstone R. A 3.30
 Sun. 11 Bradford N. H 3.00
 Mon. 26 Oldham A 3.00

JANUARY

Sun. 8 Wakefield T. H 3.00
 Sun. 15 Widnes A 3.00
 Sun. 22 Leeds A 3.00
 Sun. 29 Challenge Cup 1

FEBRUARY

Sun. 5 Hull H 3.00
 Sun. 12 Challenge Cup 2
 Fri. 17 Castleford H 7.30
 Sun. 26 Challenge Cup 3

MARCH

Sun. 5 Halifax A 3.00
 Sun. 12 St. Helens H 3.00
 Sun. 19 Hull K.R. A 3.00
 Fri. 24 Oldham H 3.00
 Mon. 27 Warrington A 3.30

APRIL

Sun. 2 Halifax H 3.00
 Sun. 9 Wigan A 3.00
 Sun. 16 Hull A 3.00

Gibson (t)	Evans	Bentley (2t)	Williams (t)	Jones (t,2g)	Cairns	Bloor	Herbert	Moran	A. Worrall	Gormley	M. Worrall	Blease	K. O'Loughlin (4)	Major (12)
Gibson	Evans	Bentley	Williams (2t)	Jones (t,3g)	Cairns	Bloor	Herbert	Moran	A. Worrall	Gormley	Bullough	Blease	Glynn (1)	Major (11)
Gibson (t)	Evans (t)	Bentley (t)	Jones (t,2g)	Hadley	Williams	Cairns (dg)	Herbert	Moran	Major	Gormley	Blease (t)	McTigue	J.O'Loughlin(dnp)	Bullough (9)
Gibson (t)	Evans (2t)	Bentley (2t)	Jones (t,4g)	Hadley	Williams	Cairns	Herbert (t)	Moran (t)	Major	Gormley	Blease	McTigue	P. Shaw (6)	Bullough (13)
Gibson (2t)	Evans	Bentley (3t)	Jones (6g)	Hadley	P. Shaw	Cairns	Herbert	Moran	Major	Gormley	M. Worrall (t)	Blease	Bloor (6)	McTigue (13)
Gibson (t)	Evans	Bentley	Jones (t,3g)	Hadley	P. Shaw	Cairns	Herbert	Moran	Major	Gormley (t)	M. Worrall	McTigue	A. Worrall (10)	Bullough (6)
Gibson	Evans	Bentley	K. O'Loughlin	Hadley (2t)	Jones (g)	Cairns (dg)	Herbert	Moran (t)	Major	Gormley	M. Worrall	McTigue	J. O'Loughlin(dnp)	Bullough (10)
Gibson	Evans	Bentley(t,dg)	K.O'Loughlin	Hadley (3g)	P. Shaw	Cairns	Herbert	Moran	Major	Gormley	M. Worrall	McTigue	Bullough (11)	A. Worrall (10)
Gibson (t)	Evans (t)	Bentley (t)	Williams	Hadley	P. Shaw	Cairns	Herbert	Moran	A.Worrall	Gormley	M. Worrall	Blease	Jones (dnp)	Bullough (10)

TODAY'S COLLECTION

Lauren Wrigglesworth, aged 3, was born 5 weeks prematurely without a nose and now has a plastic tube to help her breathe. She can be helped with an operation at the Paris Clinic of Plastic Surgery at a cost of £20,000. Salford R.L.F.C. would like to help as much as they can. Please give generously.

SALFORD LANCASHIRE CUP FINAL SUNDAY 23rd OCTOBER

Players, directors and staff will be returning for a reception to the Willows Variety Centre at 8.30 p.m. Supporters welcome.

To be arranged:

Leeds H
 Featherstone R. H



Top try scorer Keith Bentley bursts through the Castleford defence. (Photo by Kieran Platt).



POLYMERS SERVICES LIMITED



WHITEFIELD MILL
 MAURICE STREET
 NELSON, Lancs. BB9 7HZ
 Telephone Nelson 0282 692727
 Telex 635227 MINPOL

Suppliers of Synthetic Rubber's and Plastics

Blackburn Cleaning Services

INDUSTRIAL & DAILY OFFICE CLEANING

We are local and worth a phone call

061-795 5534

LIFELINE DRAW — £1,000 EVERY WEEK

SALFORD R.L.F.C. CLUB CALL — 0898 12 16 44

JUNIOR DEVILS

FIRST, let us start with congratulations to the Team on reaching the final of the Lancashire Cup. What a great performance.

Our first Open Night, the day before the semi-final was a huge success, with more than sixty youngsters in attendance, along with some mums and dads. The Junior Devils watched the players train, then went into the Variety Centre, where we had a raffle for various souvenirs, the first prize being a rugby ball signed by the players of Salford and Widnes. The players mingled with the youngsters and signed autographs.

Then followed the Player of the Month award, the 1st Team, Peter Williams, had his trophy presented to him by Junior Devil Peter Bowden, and David Ratcliffe, the 'A' Team Player of the Month had his trophy presented by Steve Sutcliffe.

There was also a birthday card presentation to Paul Shaw, all the Junior Devils signed it.

I would like to remind everyone, that when you are filling in your voting slips, to put your membership number on, and don't forget the workers in the team, the forwards who work just as hard to create the openings for Bentley, Jones and Hadley etc., to score the tries.

Junior Devils Birthday File

PAUL BAILEY — Membership no. 0037 - 6 years old on the 13th October, 1988.

Any more birthdays, please leave your message at the Junior Devils Ticket Office on match days.

Danny Bentham

LYON ALARMS

13 BLACKLEY CLOSE, UNSWORTH, BURY

Telephone: 061-796 9332
or 0860 314 1222 (mobile)

*All types of security systems for
vehicles, houses etc.*

Slick Services



We deliver door to door throughout the U.K.

SLICK SERVICES

UNIT 20, GUINNESS ROAD TRADING ESTATE
GUINNESS ROAD, TRAFFORD PARK M17 1SD
Tel: 061-872 7863 - 061-873 8293

For a Slick collection phone 061-872 7863

? QUIZ ?

1. Who holds the Oldham club record for goals in a season?
2. What is the highest position Oldham have achieved in the First Division since the reformation of 2 Divisions in 1973-74?
3. When did Oldham last score a league double over Salford?
4. Oldham's club record score against is 67 achieved on September 1978, by which club?
5. Since 1977, 3 coaches at Oldham, also played for Salford at some stage in their careers. Who were they?

ANSWERS ON PAGE 28

read Jack McNamara

in the

Manchester Evening News

and

PINK FINAL

SALFORD R.L.F.C. CLUB CALL — 0898 12 16 44

FACTS & FIGURES

SALFORD R.L.F.C. 1988-89 PLAYERS SUMMARY

	App.	Sub.	Tries	Goals	Dr.	Pts.
BENTLEY, KEITH	9	—	10	—	1	41
BLEASE, IAN	6	—	1	—	—	4
*BLOOR, DARREN	2	1	—	—	—	—
BULLOUGH, DAVID	1	6	—	—	—	—
CAIRNS, DAVID	9	—	—	—	2	2
EVANS, TEX	9	—	5	—	—	20
GIBSON, STEVE	9	—	7	—	—	28
§GLYNN, PETER	—	1	—	—	—	—
GORMLEY, IAN	9	—	1	—	—	4
HADLEY, ADRIAN	7	—	2	3	—	14
HERBERT, STEVE	9	—	1	—	—	4
JONES, KEN	7	—	5	22	—	64
McTIGUE, MICK	5	1	—	—	—	—
MAJOR, DAVID	6	2	—	—	—	—
MORAN, MARK	9	—	2	—	—	8
O'LOUGHLIN, KEIRON ...	2	1	—	—	—	—
SHAW, PAUL	4	1	—	—	—	—
WILLIAMS, PETER	5	—	3	—	—	12
WORRALL, MICK	6	—	1	—	—	4
WORRALL, TONY	3	2	—	—	—	—

(Up to and including Sunday 9th October, v. Castleford)
(Friendlies are not included)

* Transferred to St. Helens § Transferred to Chorley Borough

RESULT IN DETAIL

Wednesday 5th October Grunhalle Lager Lancs. Cup Semi-Final
SALFORD 15 WARRINGTON 2

Teams:

SALFORD: Gibson; Evans, Bentley, K. O'Loughlin, Hadley; P. Shaw, Cairns; Herbert, Moran, Major, Gormley, M. Worrall, McTigue.

Subs: Bullough (for Gormley), A. Worrall (for Major)

Tries: Bentley, Evans Goals: Hadley (3), Bentley (drop goal)

WARRINGTON: Turner, Drummond, Cullen, Thorniley, Rudd; Woods, Blake; Humphries, Thursfield, Sumner, Sanderson, McGinty, Duane.

Subs: Crompton (for Cullen), Molloy (did not play)

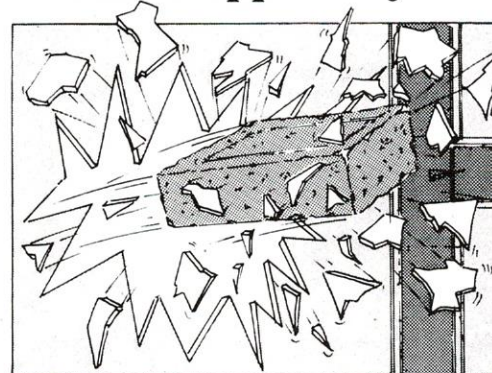
Goal: Turner

Half-time 10-2 Attendance 7,316 Referee K. Allatt (Southport)

SHOPKEEPERS



It can happen to you



ARMSTRONG GLASS

Day or Night

24 HOUR

EMERGENCY GLAZING
AND BOARDING-UP
SERVICE

061-736 1627



Chromal Plating Co. (Bolton) Ltd

264 BLACKBURN ROAD, BOLTON BL1 8DT, LANCASHIRE
Tel: Bolton 26995

**SPECIALISTS IN CHROMIUM PLATING FOR
SHOP FITTINGS
ENQUIRIES TO ROBERT KANEEN OR
BARRY FALLOWS
on Bolton 26995**

★ ★ ★

Plating in CHROMIUM, NICKEL & ZINC
BARREL PLATING OF SMALL COMPONENTS IN ZINC

★ ★ ★

also at

Vale Works, Vale St., Turton, Nr. Bolton BL7 0ED. Tel: Turton 852535
Unit 3, Gillibrand Mills, Hollis Grove St., Darwen. Tel: Darwen 72232

LIFELINE DRAW — £1,000 EVERY WEEK

SALFORD R.L.F.C. CLUB CALL — 0898 12 16 44

This Space is Reserved
for

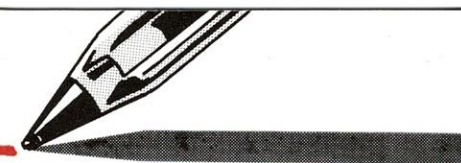
MARTIN & CO.
Solicitors

Church Street, Eccles

RMG
THE NEW POWER IN THE OFFICE

Ronald Martin Groome PLC
Units 3-4
Hazelhurst Road,
Worsley,
Manchester M28 4SX.
Tel: 061-793 5588
..... all your office needs

Letters to the Editor



Mr. Bill Slater of Pendlebury would like to know how many Salford players have toured Down Under with the G.B. side, since the Tours first started in 1910.

• Ed. Below is a list of the Tours that included Salford players:

- 1910 J. Lomas (captain), E. Curzon
- 1928 W. Williams
- 1932 J. Feetham, B. Hudson, A. Risman, W. Williams
- 1936 A. Edwards, B. Hudson, E. Jenkins, A. Risman, W. Watkins
- 1946 A. Risman (captain), G. Curran
- 1950 T. Danby
- 1954 T. McKinney
- 1970 C. Hesketh, J. Ward
- 1974 C. Hesketh (captain), P. Charlton, C. Dixon, K. Gill, D. Watkins, (M. Richards was a replacement for J. Atkinson (Leeds) who was injured on the tour)
- 1979 S. Nash

J. Timms of Rochdale wants the scorers for the match between Rochdale Hornets v. Salford for 1960-61 season.

• Ed Hornets won the game by 17 points to 8 played on April 11th 1961. Scorers were: Rochdale: Tries - Berry, Allander, Unsworth. Goals: Berry (4)
Salford: Tries - Renninson, Hartley. Goal: Dunn.

Send your letters to:-

D. Platt, Editor, c/o Secretary's Office

PICCADILLY SPORT

The best for Rugby League

Tune in to the best Rugby League coverage in the North West every Sunday between 3pm and 5.05pm on PICCADILLY 1152. It's fast-moving non-stop Rugby League action. . . . it's entertaining and informative. Stuart Pyke and Brian Clarke head the best team of Rugby League reporters around as PICCADILLY 1152 brings you top commentary, in-depth analysis, big competitions and the big names from the world of RL. There'll also be a brand new weekly feature as PICCADILLY links-up exclusively with Australia to bring you all the Rugby League news from Down Under. So make a date with the number one Rugby League team - PICCADILLY 1152 and STONES BITTER - every Sunday - 3pm to 5.05pm.

PICCADILLY
1 1 5 2



Broadcasting on 1152kHz · 261 metres Medium Wave



TRAVELLING AWAY?

Bookings will be taken at the Junior Devils shop or Ticket office after matches, or the Pool office Monday to Friday 9.00 am - 5 pm with a late night on Monday's till 8.00 pm.

You can also book by telephone on 061-736 6564 (24 hours) leaving name, address and telephone number.

Prices: Adult £3.50,
Junior Devils/O.A.P's £3.00.

Special prices

Hull & Hull K.R. - Adults £5.50

Coaches depart from the Willows, though we are open to suggestions for alternative pick-up points, provided sufficient passengers can be collected.

NEXT AWAY MATCHES
Sunday 23rd Oct.
Lancs. Cup Final (at St. Helens)
ALSO
Sunday 6th Nov.
ST. HELENS (League)

Junior Devils Souvenir Shop

Sale now on!

**MANY ITEMS FROM LAST
SEASON AT
GIVE AWAY PRICES!
LOTS OF NEW STOCK
ON ORDER**

**CALL IN FOR A LOOK
AND A CHAT**

*Entrance through
Variety Centre and then down
to Ground Floor*

LIFELINE DRAW — £1,000 EVERY WEEK

SALFORD R.L.F.C. CLUB CALL — 0898 12 16 44



MONTON TRAVEL LTD.

169 Monton Road, Monton, Eccles M30 9GS. Tel: 061-707 2353

"MONTON TRAVELS JUST THE TICKET FOR"

★ ★ ★

Package Holidays and Flights only, to Europe Long Haul
Flights around the world

★ ★ ★

Coach Tours in Great Britain and the Continent

★ ★ ★

*Ferry Cross, Cruising on Luxury Liners or
sailing on the Broads*

★ ★ ★

also

WEEKEND BREAKS OR DAY TRIPS OUT

★ ★ ★

Hotel accommodation for business or holidays, anywhere you want

★ ★ ★

Skiing or golfing holidays

★ ★ ★

So if you have to go by plane, train, coach, ship or car
then you must go to Monton Travel
and

Remember booking early secures those free places for children

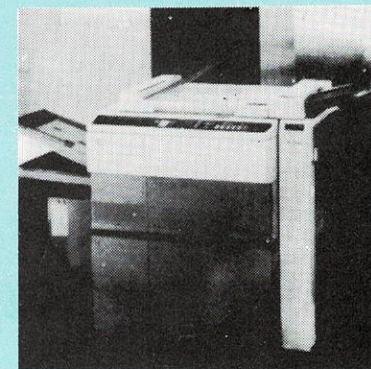


Salford R.L.F.C. 1988-1989 Season

Adopt-a-Player Sponsorship

P. Glynn	D.C. Tomkinson	P. Williams	Saffron
S. Herbert	Truly Fair	A. Worrall	Saffron
K. Bentley	Medex	M. Worrall	Saffron
G. Disley	Medex	I. Blease	Saffron
A. Burgess	B & G Electrical Acc.	T. Evans	Saffron
J. O'Loughlin	D. Moorcroft	K. O'Loughlin	Delfmine
I. Marsh	Standing Insurance	J. Bloor	Delfmine
M. McTigue	Edmond Dantes (Madrid)	D. Cairns	Brass Tally
A. Hadley	Regent Hotel, Salford	S. Gibson	Swan Hotel, Salford

The Minolta EP650Z **The most exciting new concept** **in office automation copying.**



The Minolta EP650Z zoom capability lets you select any magnification ratio between $\times 0.640$ and 1.420 , giving you tremendous latitude in selecting the exact image size according to your copy requirement. The EP650Z will also automatically select the most appropriate magnification ratio for your purposes, or the most appropriate loaded paper size. Added to these versatile features are 46 (A4 size) copies per minute speed 999 multiple copying - 4-way paper feeding - and automated document feeding and sorting options that adapt to every office need.



Omega Business Machines Limited

31 HAZELHURST ROAD · WORSLEY · MANCHESTER M28 4SX
TELEPHONE 061 793 8026

B

The Brick People

Beal Builders Merchants

THE LARGEST STOCKISTS OF
Facing bricks in the North West

FOR A BRICK IN A MILLION

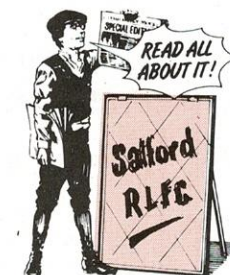
OR

ONE MILLION BRICK'S

**WE SUPPLY BRICK'S OF DISTINCTION
AT PRICE'S YOU CAN AFFORD**

**VISIT OUR STOCK YARD & SHOWROOM WITHOUT
OBLIGATION: BURY & BOLTON ROAD
RADCLIFFE, BOLTON 386714**

Willows Report...



SALFORD LOSE THEIR WAY IN SECOND HALF

Sunday 9th October

Division One

CASTLEFORD 38 SALFORD 12

If I had not seen it myself, I would not have believed how a team could play so well in the first half and then so lethargically in the second and in fact only venture into the Castleford '25' on a couple of occasions.

Castleford had **Roockley** at full back for the injured **Belcher** whilst G.B. prop forward **Ward** was also out, presumably with next weeks Yorkshire Cup Final with Leeds, in mind.

Salford welcomed back Peter Williams and also had **Tony Worrall** and Ian Blease replacing **Major** and **McTigue** respectively. There was also a place on the bench for **Ken Jones** recovered from concussion.

In ideal conditions, with a slight wind, it was Castleford who took up the early running and in the 3rd minute Marchant went over the line but could not ground the ball. Then it was Salford at the other end who broke through but **Blease** was smothered when he tried to get the ball away. In the 8th minute, however, Cas did go in front when prop forward **Sampson** (late adjudged "Man of the Match") forced his way over for a try that **Ketteridge** converted (6-0). This try spurred Salford on and a couple of good chances went begging with the Castleford line wide open before **Gibson** cashed in on a tremendous break from **Bentley**, to run 50 yards and score in the corner. **Hadley** was just wide with the touchline kick. (6-4). Four minutes later and brilliant interpassing saw **Evans** score in a similar position. **Hadley** missed the kick, but the Reds were in front at 8-6. In the 23rd minute Cas regained the lead with **K. Beardmore** taking a pass from **Joyner** to score between the sticks. A **Ketteridge** conversion saw Cas ahead at 12-8. Five minutes later, Reds top try scorer **Bentley** finished off a grand move by **Gibson** and **Shaw** to score his 10th try of the season to level the scores. **Hadley** was having no luck with his kicking and just before half-time he failed again with a penalty attempt. A very entertaining half ended 12-12 but a mystifying decision by the referee was costly for the Reds, bringing us back for a penalty when a certain try was on the cards.

The second half opened with an early **Ketteridge** penalty (14-12). Then good handling by the home side enabled **Anderson** to score between the sticks. **Ketteridge** goaled. (20-12). Afterwards, a bizarre incident, saw **Gormley** sin-binned after coming to the aid of **Shaw**, who had been "flattened". Castleford's **Plange** followed him four minutes later for a high tackle on **Williams**. From then on, Salford seemed to go into their shell, not aided by the referee who ruled a 'turnover' when in fact Salford had held possession for only one tackle! The last quarter of the match was dominated by Castleford and tries came at regular intervals from **R. Beardmore**, **England** and **Chapman**. **Ketteridge** took his goal tally to seven.

Teams:

CASTLEFORD: Roockley; Plange, Marchant, Boothroyd, Chapman, Anderson, R. Beardmore, Sampson, K. Beardmore, England, Ketteridge, Gibbs, Joyner.

Subs: Southernwood (for Marchant), Hill (for Joyner)

Tries: Chapman, Anderson, R. Beardmore, K. Beardmore, England, Sampson.

Goals: Ketteridge (7).

SALFORD: Gibson; Evans, Bentley, Williams, Hadley; P. Shaw, Cairns; Herbert, Moran, A. Worrall, Gormley, M. Worrall, Blease.

Subs: Jones (did not play), Bullough (for A. Worrall)

Tries: Gibson, Evans, Bentley.

Half-time 12-12 Attendance 6,151 Referee G.F. Tickle (St. Helens)

SALFORD R.L.F.C. CLUB CALL — 0898 12 16 44

SPONSORED BY
TRENCHMAN
LINING SYSTEMS

RUGBY LEAGUE ALLIANCE FIXTURES

SPONSORED BY
TRENCHMAN
LINING SYSTEMS

AUGUST	Sat. 27	Hull K.R.	A	2.30	7-26
SEPTEMBER	Fri. 2	Leeds	H	7.30	6-21
	Fri. 9	Warrington	A	7.30	25-36
	Fri. 16	Hunslet	H	7.30	10-11
	Fri. 23	Swinton	H	7.30	14-10
OCTOBER	Sat. 1	Whitehaven L.S.1	A	7.30	16-18
	Fri. 7	Castleford	H	7.30	12-20
	Fri. 14	Lancs. Shield 2	A	2.30	
	Sat. 22	Carrisle	H	2.30	
	Fri. 28	Hull	A	7.30	
NOVEMBER	Fri. 4	St. Helens	H	7.30	
	Fri. 11	Castleford	A	7.30	
	Fri. 18	Wigan	A	7.30	
	Fri. 25	Hull	H	7.30	
DECEMBER	Fri. 2	Hunslet	A	7.30	
	Fri. 9	Warrington	H	7.30	
	Fri. 16	Halifax	A	7.30	
	Thu. 29	Wigan	H	7.30	
JANUARY	Sat. 7	Carrisle	A	2.30	
	Fri. 13	Widnes	H	7.30	
	Sat. 21	Whitehaven	A	2.30	
	Fri. 27	Leeds	A	7.30	
FEBRUARY	Fri. 3	Slalom Lager Cup 1	H	2.30	
	Sat. 11	Hull K.R.	H	2.30	
	Fri. 17	Slalom Lager Cup 2	A	7.30	
	Fri. 24	Widnes	A	7.30	
MARCH	Fri. 3	Halifax	H	7.30	
	Fri. 10	St. Helens	H	7.30	
	Sat. 18	Whitehaven	H	2.30	
	Wed. 29	Swinton	A	7.30	

Saturday 1st October
Lancs Shield 1

Whitehaven 18 Salford 16

Team: Warhurst; Mercer (3t), Corless, D. Shaw, A.N.O.; J. O'Loughlin, Makin; Whiteley, A.N.O.; Gill, Ratcliffe, Regan, Burgess (2g). Subs: Fox, Walsh.

Fri. 7th October Division 1

Salford 12 Castleford 20

The Reds suffered their fifth defeat in six league matches, at the hands of Castleford at the Willows.

The visitors raced into a 12 points lead and led by 14 points to 8 at half-time.

Though the home side pressed hard in the second half they were restricted to a Bloor try, and Castleford added six points for a comfortable victory.

Team:

A.N.O.; Mercer, Marsh, D. Shaw, J. O'Loughlin; J. Bloor (2t), Makin; Whiteley, Walsh, Gill, Regan, Disley, Burgess (2g). Subs: Corless, Potts.

ANSWERS TO QUIZ PAGE 19

1. B. Ganley (200) 1957-58
2. Fifth in season 1984-85
3. 1985-86.
4. Hull K.R.
5. Terry Ramshaw, Bill Francis, Peter Smethurst

THE TROPHY CENTRE

Formerly of Monton
SPEEDY ENGRAVING SERVICE
TROPHIES, SHIELDS, CUPS
MEDALS & TANKARDS

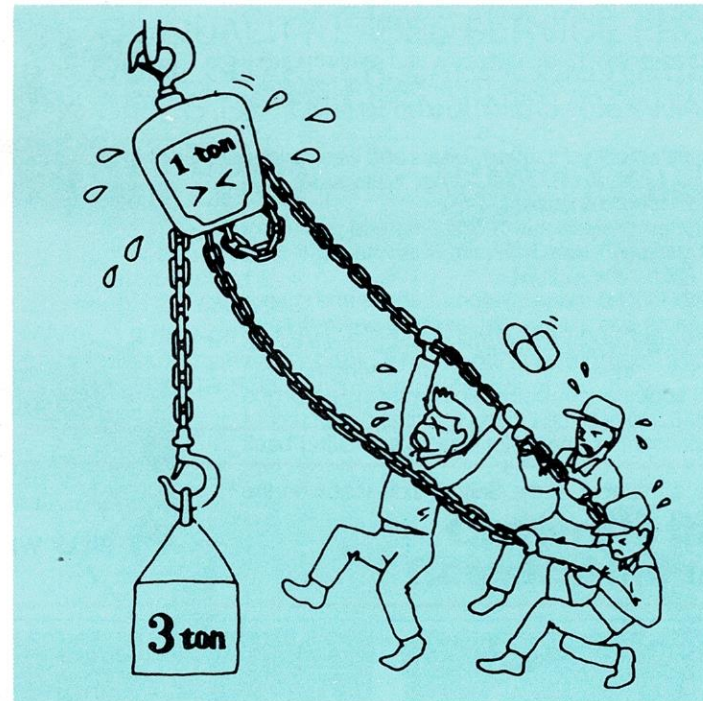
Large discounts for leagues
Call and see our large selection
406 LIVERPOOL ROAD
PEEL GREEN, ECCLES

Tel: 061 - 789 0638



TRENCHMAN
LINING SYSTEMS
LIMITED

LIFTING EQUIPMENT



**DON'T STRUGGLE WITH YOUR LIFTING
EQUIPMENT REQUIREMENTS**

**CALL IN THE EXPERTS WHO WILL HANDLE
ALL SUPPLIES ALONG WITH ON SITE
REPAIRS, TESTING & CERTIFICATION OF
YOUR EXISTING EQUIPMENT**

Authorised KUPLEX distributors

Unit 2, Moss Lane Ind. Est., Moss Lane, Heyside,
Royton, Oldham OL2 6HR Tel: (0706) 881943 Tlx: 635391

SALFORD R.L.F.C. CLUB CALL — 0898 12 16 44

1934 The Original Red Devils 1934

ONE of Salford's most respected players who went on the 1934 Tour to France was prop forward Billy Williams. Born in Crumlin, Wales, he played four times for the Welsh R.U. International side before joining Salford during the 1927-28 season.

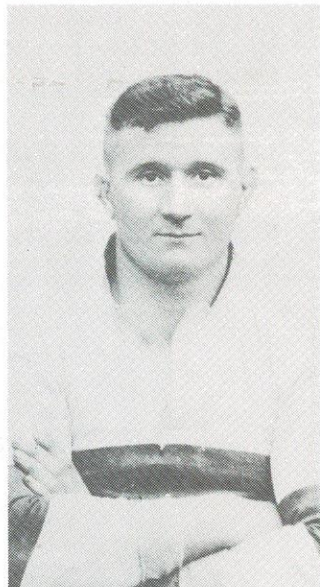
He soon settled in the 13-a-side code and played for the Welsh R.L. side on three occasions. The pinnacle of his career though, must have been his Down Under Tours in 1928 and 1932.

He was captain at Salford for many years and was chosen to represent the Northern R.L. XIII, Other Nationalities plus Glamorgan and Monmouthshire.

When Billy turned professional, a "cap" he had gained for Wales in Rugby Union was withheld when he signed for Salford.

On the French Tour he made six appearances and scored 3 tries. Billy Williams was a very popular figure at the Willows and a great leader by example. After making his debut for the Reds on the 15th October 1927 against St. Helens, he went on to make 435 appearances before finally bowing out on the 1st October 1938 against Hull. During that time he scored 14 tries but set up countless more for Salford's exciting back division.

He was also a member of the Salford side that won the Challenge cup in 1938.



BILLY WILLIAMS

OPEN RUGBY THE League MAGAZINE

Rugby League at its best!

EVERY MONTH

Top news, comments and sparkling colour photos ...

PLUS ... LEAGUE'S BIGGEST NAMES

Only £1.20p Don't miss your copy of OPEN RUGBY



ON SALE AT THE WILLOWS, SALFORD

- LOOK FOR 'OPEN RUGBY' EVERY HOME MATCH -

LIFELINE DRAW — £1,000 EVERY WEEK



CUSTOMARK

FOR TOP QUALITY LABEL SERVICE FROM YOUR LOCAL SUPPLIER. LABEL CENTRES ON BOTH SIDES OF THE PENNINES. CONTACT



**CUSTOMARK
PENDLETON**

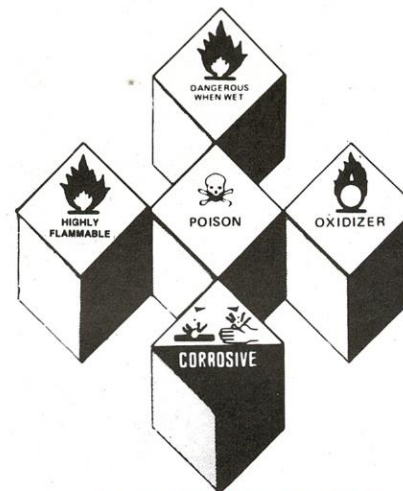


**CUSTOMARK
CALDERDALE**

2-4 Brindleheath Road
Pendleton, Salford 6
Telephone: 061-736 3083

Dean Clough
Halifax HX1 1XG
Telephone: 0422-55568

CUSTOMARK is a division of MARKEM SYSTEMS, leading manufacturers of label printing systems, coding and marking equipment and ASTOR FOIL for the graphics industry.



MEDEX

Carriers to the Chemical Industry

WE SPECIALISE AS
**HAZCHEM
CARRIERS**
IN
PACKAGES
LARGE OR SMALL

MEDEX DISTRIBUTION

Kearsley Moss Depot, Moss Road,
Springfield Road, Kearsley,
Bolton BL4 8HT.

Telephone: Farnworth (0204) 706927.

MEDEX is a trading division of
H TRANSPORT SERVICES
(NORTH WEST) LTD.



SALFORD R.L.F.C. CLUB CALL — 0898 12 16 44