

TEAM CHECK

OLDHAM

DUNCAN PLATT — 1
 STEVE ROBINSON — 2
 JOHN HENDERSON — 3
 CHARLIE McALISTER — 4
 KEVIN MEADOWS — 5
 CHRIS O'SULLIVAN — 6
 MIKE FORD — 7
 NEIL CLAWSON — 8
 ANDY RUANE — 9
 LEO CASEY — 10
 PAUL ROUND — 11
 MICK BARDSLEY — 12
 PAUL TAYLOR — 13
 KEITH ATKINSON — 14
 COLIN HAWKYARD — 15

WARRINGTON

ROBERT TURNER — 1
 DES DRUMMOND — 2
 PHIL BLAKE — 3
 TONY THORNILEY — 4
 PAUL WILLIAMSON — 5
 JOHN WOODS — 6
 PAUL BISHOP — 7
 STEVE ROACH — 8
 KEVIN TAMATI — 9
 STEVE MOLLOY — 10
 MARK ROBERTS — 11
 LES DAVIDSON — 12
 MIKE GREGORY — 13
 DAVID LYON — 14
 TONY HUMPHRIES — 15

Referee: Mr. S. W. Cross (Hull) Touch Judges: Mr. D. W. Simpson (Red Flag), Mr. A. Pedder (Orange Flag)

PENALTIES				
1	2	3	4	5
6	7	8	9	10
11	12	13	14	15
16	17	18	19	20

SCRUMS				
1	2	3	4	5
6	7	8	9	10
11	12	13	14	15
16	17	18	19	20

PENALTIES				
1	2	3	4	5
6	7	8	9	10
11	12	13	14	15
16	17	18	19	20

SCRUMS				
1	2	3	4	5
6	7	8	9	10
11	12	13	14	15
16	17	18	19	20

GEORGE HILL



Millplan Kitchens

Scottfield, Ashton Road, Oldham

Phone for FREE colour brochure 061-652 7421 * Flatpack * Assembled * Fitted



BOLTON Millfield Road, Brightmet, Bolton 384867 SALE Glebelands Road 061-969 7543

OLDHAM

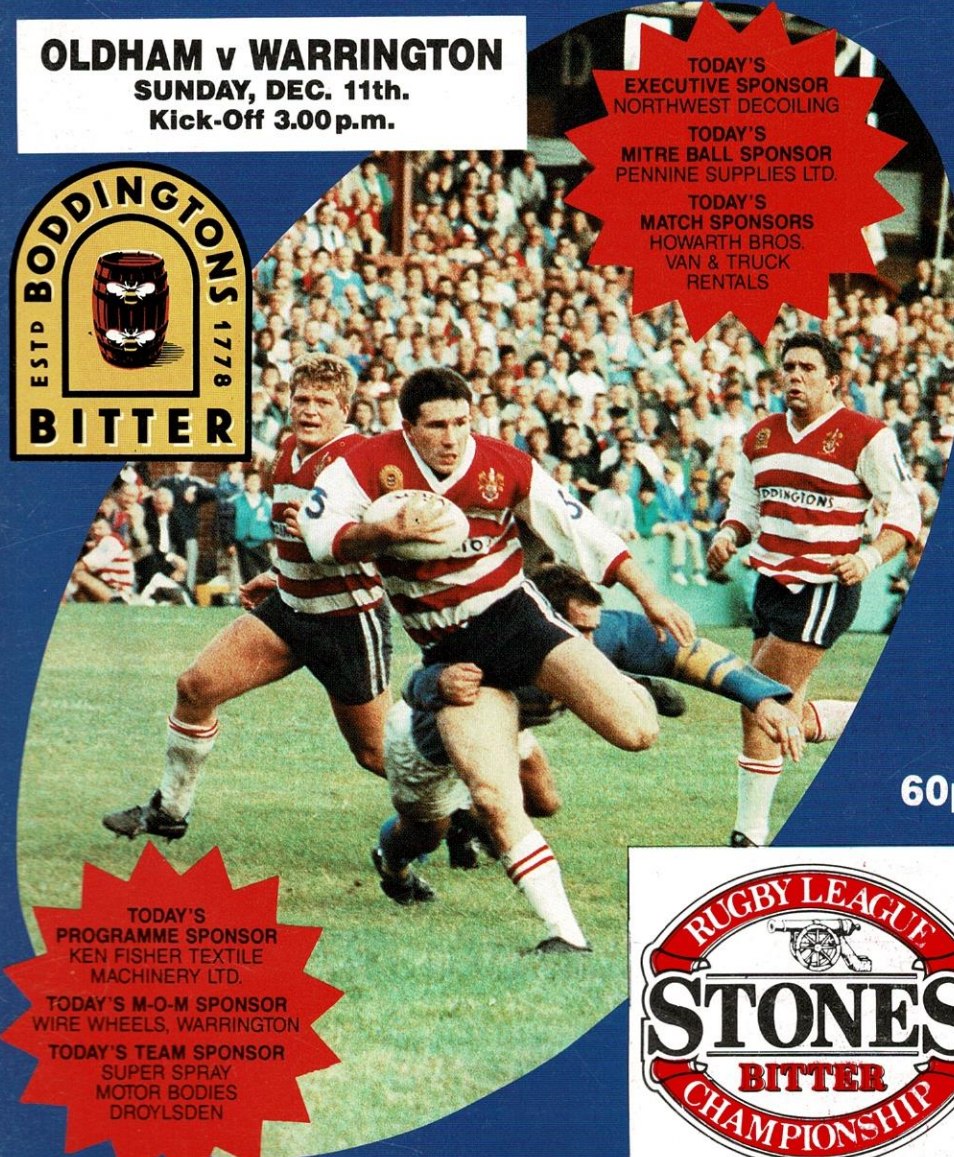
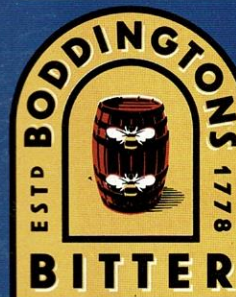
RUGBY LEAGUE FOOTBALL CLUB

OLDHAM v WARRINGTON
SUNDAY, DEC. 11th.
Kick-Off 3.00 p.m.

TODAY'S
 EXECUTIVE SPONSOR
 NORTHWEST DECOILING

TODAY'S
 MITRE BALL SPONSOR
 PENNINE SUPPLIES LTD.

TODAY'S
 MATCH SPONSORS
 HOWARTH BROS.
 VAN & TRUCK
 RENTALS



60p

TODAY'S
 PROGRAMME SPONSOR
 KEN FISHER TEXTILE
 MACHINERY LTD.

TODAY'S M-O-M SPONSOR
 WIRE WHEELS, WARRINGTON

TODAY'S TEAM SPONSOR
 SUPER SPRAY
 MOTOR BODIES
 DROYLSDEN



OLDHAM CONVERTS-



- to the best team
over the bar.



Oldham Rugby League Football Club

THE PAVILION · WATERSHEDDINGS · OLDHAM

Telephone: 061-652 5244 and 061-624 4865

Directors: H. Ashworth, D. Gardner, J. Knox, A. G. Pache

Secretary: Mrs. A. Lees

Coaching Staff: Tony Barrow, Derek Whitehead, I. Taylor

Conditioner: O. Rowe

Professional Playing Staff:

K. Atkinson, M. Bardsley, I. Bates, L. Casey, C. Chisnall, N. Clawson, T. Croston, M. Ford, T. Flanagan, T. Foley, D. Foy, M. Hall, C. Hawkyard, R. Irving, P. Kirwan, C. McAlister, T. Miller, R. Marsden, K. Meadows, A. Morrison, P. Lord, J. Ogburn, M. Parrish, S. Patterson, S. Robinson, P. Round, A. Ruane, P. Sherman, I. Sherratt, M. Burke, I. Sanderson, P. Lowndes, T. Naidole, A. Copeland, P. Taylor, C. O'Sullivan, A. Gilbert, J. Fairbank, D. Platt.

Hon. Doctor: Dr. Johnson

Dental Surgeon: Mr. N. Gibbison

Hon. Consultant Orthopaedic Surgeons: Mr. H. Thompson, Mr. D. Walker

Physiotherapist: Mr. A. Bonnelle

Asst. Physiotherapist: Mr. J. Watkins

Commercial Manager: R. Hill

Official Timekeeper: J. Roscoe

Official Sin Bin Man: David Whitehead

CLUB RECORDS

Record Victory: 67-6 v Liverpool City, April, 1959
Record Defeat: 11-67 by Hull K.R., September, 1978
Record Attendance: 28,000 v Huddersfield, 24 February, 1912
Record Receipts: £30,388.70 v Wigan, 4th February, 1987
Record Transfer Fee Paid: £65,000 to St. Helens for Paul Round August 1987 and £65,000 for Mike Ford January 1988
Record Try Scorer: Reg Farrar, 49 tries, 1921-22 season
Record Goal Scorer: Bernard Ganley, 224 goals, 1957-58 season
Record Point Scorer: Bernard Ganley, 28 points v Liverpool City, April 1959
First Game: 21st October, 1876 v Stalybridge
Highest number of points scored: Bernard Ganley, 2,881
Most Appearances: Joe Ferguson, 685
Most Tries: Pre 1900, Jack Hirst, 233 Since 1900, Alan Davies, 182

CLUB HONOURS

Rugby League Championship Play-off Winners: 1909-10, 1910-11, 1956-57
Runners-up: 1906-07, 1907-08, 1908-09, 1921-22, 1954-55
First Division Champions: 1904-05
Second Division Champions: 1963-64, 1981-82, 1987-88
Rugby League Challenge Cup Winners: 1898-99, 1924-25, 1926-27
Runners-up: 1906-07, 1911-12, 1923-24, 1925-26
Lancashire Cup Winners: 1907-08, 1910-11, 1913-14, 1919-20, 1924-25, 1933-34, 1956-57, 1957-58, 1958-59
Runners-up: 1908-09, 1911-12, 1918-19, 1921-22, 1954-55, 1966-67, 1968-69, 1986-87
Lancashire Championship Winners: 1907-08, 1909-10, 1921-22, 1956-57, 1957-58
Runners-up: 1908-09, 1910-11, 1911-12, 1919-20, 1923-24, 1954-55
Lancashire Shield Winners: 1975-76, 1979-80
Colts Premiership Trophy: 1979-80
Second Division Premiership: 1987-88

Programme Pictures: Oldham Evening Chronicle
Programme Typeset and Printed by Hirst, Kidd & Rennie Ltd., Union Street, Oldham, OL1 1EQ.



PROBABLY THE BEST SPORTS SHOP AROUND

Whatever your sport — Whatever your need
MIDASPORTS will have it — That's guaranteed

Suppliers to:
OLDHAM R.L.F.C.
Oldham Town Teams
and many Oldham Schools

QUOTATIONS GIVEN TO CLUBS AND SCHOOLS

IF YOU'RE INTO SPORT
 GET INTO
MIDASPORTS

INDOOR MARKET HALL
OLDHAM
 Telephone: 061-678 6199

UNIT 6 WARRINGTON STREET
ASHTON-U-LYNE
 Telephone: 061-344 0550

PLAYERS PROFILE

CHRIS O'SULLIVAN

PLAYER PROFILE



Full Name: *Christopher Mark O'Sullivan*
 Nick Name: *Sully*
 Birthdate: *23.9.65*
 Birthplace: *Canberra, Australia*
 Marital Status: *Vivien, Blake (2½), Troy (10 months)*
 Occupation: *Builder*
 Car: *Ford Falcon*
 Fav. TV Show: *Mash*
 Fav. Film: *Rocky I*
 Fav. Music: *John English*
 Fav. Food/Drink: *Cordon bleu/Lager*
 Fav. Reading: *Rugby League Week*
 Hobbies: *Water-skiing, shooting*
 Fav. other sports: *Touch football*
 Likes about game: *Attacking*
 Dislikes about game: *Wet grounds*
 Superstitions: *Run out third*
 Fav. position: *Scrum-half*
 Fav. ground: *Seaford Oval, Canberra*
 Best moment: *Aussie XIII v Papua NG, 1985, Sydney Grand Final, 1987*
 Worst moment: *Grand Final defeat*
 Hardest player to tackle: *Olsen Filipaina (NZ)*
 Hardest tackler: *Dean Lance (Canberra)*
 Fav. all-time player: *Billy Smith (Aust.)*

CAREER WITH OLDHAM

Date signed on: *8.88 (One season)*
 Debut: *v Workington (h), Lancs. Cup, 18.9.88, won 64-2*
 Appearances: *11*
 Tries: *1*
 Goals: *0*
 Drop goals: *0*
 Total points: *4*

AUTOGRAPH:

WE WOULD LIKE TO THANK TODAY'S MATCH SPONSORS

**EXECUTIVE SPONSOR
NORTHWEST DECOILING**

**MATCH SPONSORS
HOWARTH BROS. VAN & TRUCK RENTALS**

**MITRE BALL SPONSOR
PENNINE SUPPLIES LTD.**

**TEAM SPONSOR
SUPERSPRAY MOTOR BODIES, DROYLSDEN**

**MAN OF THE MATCH SPONSOR
WIRE WHEELS, WARRINGTON**

**PROGRAMME DONOR
KEN FISHER TEXTILE MACHINERY LTD.**

Anyone interested in sponsoring please contact: Ray Hill,
Commercial Dept. Tel: 061-620 4870



**OLDHAM RLFC
WATERSHEDDINGS**



ROUGHYED · REVIEW

MATCH REPORTS AND INTERVIEWS

24 HRS

0898 · 888 · 637



CALL RIGHT NOW!



A RING-A-ROUND SERVICE 5p FOR 8 SECONDS (PEAK) 5p FOR 12 SECONDS (OFF PEAK)

ON THE BARROW BEAT

(The start of a regular feature with
Oldham coach Tony Barrow)



AFTER four weeks at Watersheddings I have had time to assess things both from the short-term point of view and in the long term.

The thing that struck me immediately about the Oldham club was the vast potential, the excellent facilities for training, and the splendid way in which the players are looked after.

Players cannot ask for anything more than having a training pitch on the doorstep and a multi-gym at the end of the corridor. At Warrington we had to go two miles to train on a school pitch.

I was delighted, too, on my first Saturday morning training session, to discover that the players then go into the social club for a full bacon-and-eggs breakfast with toast and all the trimmings.

Apart from special occasions, we've never had that sort of thing at other clubs I've been with. My immediate impression, and I told the players, was that they didn't know they were born, compared with how players are looked after at some other clubs.

What fantastic potential there is for support, too. A crowd of nearly 7,000 for the Halifax game. . . and there we are battling to get away from the bottom. Halifax brought a lot of fans, that's true, but nevertheless, I wonder how many spectators we will get when we are higher up the league and in the running for cups and trophies.

You notice I say 'when' and not 'if'. I have signed a contract for the rest of this season and the next three seasons and I wouldn't have done that without believing that the Oldham club has what it takes to hit the top.

The short-term, of course, has to be geared to getting off the bottom, out of danger, and up the league. The long-term plan is to consolidate from the bottom up

so that when we hit the top we have the strength in depth and the right set-up to stay there.

On a more immediate note, I felt we needed a full back and more mobility in the pack, hence the signing of Duncan Platt from Widnes for the No. 1 job and the switch of Paul Round to his customary place in the second-row.

In the modern, fast, streamlined game, I want all my forwards to be mobile. The days of the 18-stone prop who can hardly put one foot ahead of the other are gone. Pace and mobility is essential right through the side, and nowhere more so than in the back-row of the pack.

I want my back-row forwards to be just as mobile on defence as on attack. They must get into the habit of 'corner-flagging' when the opposition is moving the ball wide, so that we always have plenty of cover.

I have every confidence that Duncan Platt can do an excellent job for us. I have long-admired him, and I'm sure you will all give him a big welcome today on his home debut. As a bonus, he is an excellent goalkicker, too.

Strength in depth, of course, is important and at the time these notes were going to press we were still in the hunt for Gary Hyde, of Castleford — a vastly-experienced player in the First Division.

The move for John Fieldhouse proves that we mean business and I'm sure you will all be well pleased with events over the next few weeks.

In the long term, we must get the youth policy going again. I see that as an absolute necessity which, if set-up well, can put the club on the right road for years to come. . . but more about that in another programme.

TONY BARROW

For the Complete Coverage of the Rugby League Scene

Read

Jack McNamara
and
Alex Murphy

IN YOUR



Manchester Evening News

FOR AN EARLY MORNING
DELIVERY SERVICE OF
MILK & DAIRY PRODUCE

We have gotta lotta bottle

COUNTHILL DAIRY

The Dairy on your doorstep

TELEPHONE: 633 3911

REGENT STREET
OLDHAM

*The Dairy that's proud
of it's Service*

For all your chemist sundries,
Cosmetics and toiletries

F. YATES

CHEMIST

(Proprietor: Malcolm S. Fagelman)

831 Hollins Road
Hollinwood
Oldham

Telephone: 681 1291

Established over 50 years

OLDHAM'S FUTURE

A message to all from director Greg Pache



It is not very often that I speak publicly, or in the programme, but I wish to bring to the attention of supporters the importance of our forthcoming share issue.

As you are probably aware, we have been a members' club since 1876 and we have never been able to compete at top level consistently. Even the little success we have had was more than 30 years ago or as far back as the 1920s.

Being a members club has always hindered progress and limited financial support. For the first time, we can now convert to a limited company but when this was set in motion by the previous committee only £15,000 was raised by members. As it was for a closed company we could never have gained enough funds to keep Oldham Rugby afloat.

The alternative, therefore, was to look at other ideas to create a strong financial basis for success, hence the creation of the **PUBLIC LIMITED COMPANY**.

This gives an opportunity for everyone, not just members, to become a share holder of the club. i.e. companies, individuals, institutions, amateur club etc, both in the Oldham area and throughout Great Britain.

Putting figures into perspective, the market we are now entitled to pursue is enormous. As an example, our average home support totals about 4,000 and if each one of those 4,000 contributes, say, £100, we would be nearly half way to our target. That in itself would guarantee the survival of the club. Make no bones about it. If you want to continue to see rugby played in Oldham **BUY SHARES**.

It is no use saying: 'It'll be reet. Somebody else can put it in. I'm giving nowt. They'll only waste it. The club'll still be ere.'

WRONG. Think again. Be patient. Success takes time. You may say £100 is a lot of money. I'm saying, 'Yes, it is.' However, spread shares around the family and relatives. Ask your bosses to help. Think of every conceivable way in which you could introduce a shareholder. Mention it at your pub or club. I'm sure that, with effort, each supporter could raise £100 at least.

Don't forget also the Business Expansion Scheme. Contributions over £500 entitle the individual to tax relief, effectively reducing net cost for shares by 25 or 40 per cent.

We know supporters are not satisfied with results. Neither are we. We not only need money to reduce our deficit, but to be in a position to compete for the better class of players.

We have not become directors for the benefit of ourselves. On the contrary, we are here for the benefit of Oldham RLFC, a club which everyone should be proud of and which should be among the elite of the game.

Help us to save Oldham. Help us to make the club great. **BUY SHARES.**

Yours sincerely,

GREG PACHE

HARVEY ASHWORTH

MANCHESTER LTD.

Wholesale Butchers

STALL No. 25/26

THE ABATTOIR
RIVER BANK ROAD
MANCHESTER M10
Telephone: 061-223 2097

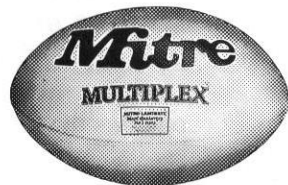
D. Troman & Co. Ltd.

*Agents for Danor Pressing Equipment
Hoffman Presses repaired and Installed
Light Haulage to the fashion trade
Hanging garment service provided*

HIAB FOR HIRE

Stockfield Road, Chadderton, Oldham
Tel: 061-633 5317

mitre[®]
**-official
suppliers
of points
for today's
game**



MULTIPLEX



KIWI



FOUNDED 1973



mitre
QUALITY COMES FIRST



TOURS *For the Ultimate in
Luxury Executive Coach Hire*

- ★ Luxury Executive Coaches with all the latest Amenities
e.g. Toilet & Washroom, Television & Video, Bar, Reclining
Seats, Tinted Windows, Hi-Fi Stereo, P.A. System.
- ★ UK & Continental Tours
- ★ 12-53 Seater Coaches
- ★ Private Hire & Contract Work
- ★ Special Rates for OAP's

**SHAW (0706) 881611 & 843144
061-624 0059**

UNIT 6, MOSS LANE, ROYTON, OLDHAM OL2 6MR

Official Executive Transport for O.R.L.F.C.

WITH THE SUPPORTERS' CLUB

ON behalf of the Supporters' Club, one or two welcomes are in order today, among them a big hello to our new coaching team of Tony Barrow and Derek Whitehead, not forgetting Tony's first signing as the new Oldham boss, Duncan Platt.

Tony and Derek were in charge at our last home game against Halifax, but they had only been installed that week and it was too late for an official Supporters' welcome in that programme.

Tony has been around the Rugby League scene for a long time, both as player and coach, and he really needs no introduction to our fans. Nor does Derek, of course, because many supporters will remember him playing here. Was it really 19 years ago? How time flies!

A big welcome, too, to Duncan Platt. Like all Oldham players, Duncan will have our full support and we hope he enjoys a happy and successful stay in Oldham colours.

Today's game will be a fascinating reunion for Tony and Derek with their former Warrington players, and we trust it will be a good, clean game in the true spirit of Rugby League.

Due to the need to comply with ground safety regulations, we must ask all supporters from both clubs to adhere to

the requests from the police and the Oldham Club, not merely by staying off the pitch at all times, but by 'staying put' at half-time instead of changing ends to be behind the try line your team is attacking.

This is vitally important, so **PLEASE** act in a responsible manner and, once having taken up position on the terraces, stay there until the game is over.

Tickets are still available for our Christmas Eve and New Year's Eve functions (phone 665 1832) but remember that everyone under the age of 18 must be accompanied by parents.

Thanks to Mr. Gane for his donation to the juniors' half-time draw. Anyone wishing to donate £5 should fix it up with any member of the Supporters' committee and it will be acknowledged in the following programme.

Christmas Draw tickets, counterfoils and monies, should be returned as soon as possible, but please do your best to sell as many as possible to help the local amateurs and the Oldham club as the same time.

Another reminder about bookings for away games — before Friday on 665 1832 or 627 0135 — will do no harm and finally a sincere wish to all at Watersheddings for a happy Christmas and a prosperous New Year.

— BRING A FRIEND —

Rugby League gates are on the up and the average First Division crowd this season is 1,500 **BETTER** than last year. We must play our part at Oldham so . . . bring a friend!

NEXT HOME LEAGUE GAME

OLDHAM v SALFORD

3.00p.m.

Boxing Day, December 26th

RADIO CARS

**24 HOUR SERVICE
5, 6, & 7 SEATER**

633 2277

Prince George Hotel & Restaurant

193 RIPPONDEN ROAD, OLDHAM
Telephone: 061-633 1328

PERFECT CHOICE

Good Morning Breakfasts
Super Value Lunches
Welcome Bar Food
Excellent Dinner Choice

Delicious Anytime : Always Good Value

For that special treat we are hard to beat

Try our "Friday Fivers" Night
And Traditional Sunday Lunch

MM

MODERN MOTIFS LIMITED

THE PRINTED BADGE PEOPLE

*Specialists in
Sponsorship Garment
Printing*

10 Shaw Road, Oldham, OL1 3LQ.
Tel: 061-624 0341

Printed Badges	Heat Seal Badges
Printed Ties	Printed Scarves
T Shirts	Pennants
Tea Towels	Armbands
Safety Helmet Stickers	Window Stickers

WELCOME WIRE!

FORGIVE the Oldham players if they go into today's match thinking that, at last, they've got Warrington in their own back yard!

The Watersheddings lads have already been to Wilderspool twice this season, in the league and in the John Player Trophy, and by an amazing twist of fate they had to go there in three cup competitions last season — the Lancashire Cup, the John Player, and the Challenge Cup.

Won't it be nice to have Warrington coming here for once? And what a game it promises to be, spiced with the inevitable Tony Barrow connection.

Tony, of course, resigned from the Warrington job a month ago and was later appointed as Oldham's boss in succession to Eric Fitzsimons.

Oldham certainly won't be lacking anything in 'inside' information on Warrington, Tony having spent ten years at Wilderspool and his Oldham assistant Derek Whitehead, having been there for 17 years as player or coach.

We all saw on television last Saturday that Warrington will be a difficult side to beat. They gave Widnes a mighty scare in the John Player quarter-final and but for a brilliant try by Martin Offiah, a devastating spell by Kurt Sorensen, and a great performance by Phil McKenzie, we might well have been scratching around for another game today while Warrington enjoyed the glamour of a cup semi-final.

Much of the Wires' strength lies in the power of Aussie forwards Steve Roach and Les Davidson and the pace and finishing power of backs Phil Blake, John Woods and Des Drummond. In the two previous clashes between the teams this season, Oldham's forwards have generally coped well, but the skill, speed and expertise of Woods and Blake, the Aussie in particular, has proved decisive.

Aussie Brian Johnson is now the Warrington coach and he must have been well pleased with his side's performance at Naughton Park last Saturday — a match marred by late injury to young full back 'Rocky' Turner, who was carried off with a back problem.

Brian Carbert, on that occasion, was in on the wing for the injured Mark Forster, but the rest of the back line was as expected — Drummond, Blake and Tony Thorniley.

Woods and Paul Bishop were at scrum-half, the latter dropping a goal to push Wires into a 7-6 lead midway through the second half, a lead they sustained until the final quarter of an hour.

In the front-row, Roach and former Kiwi Test man Kevin Tamati were joined by a young forward who learned his rugby in this area and

is well-known to all in the Oldham amateur game, Steve Molloy.

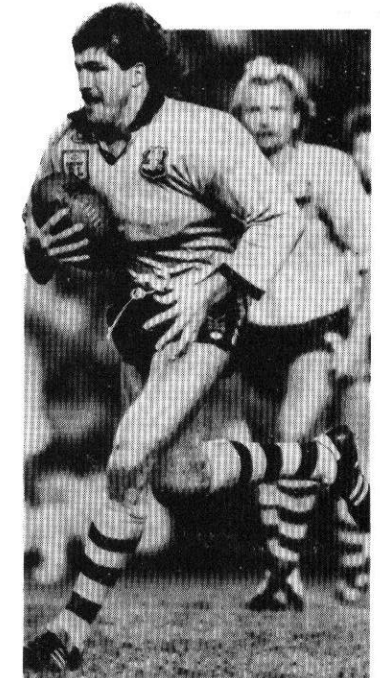
Another ex-Oldham youth league player, Mark Roberts, accompanied Aussie star Davidson in the second-row, and what a game Mark had alongside his more celebrated partner. At the back, of course, was Great Britain man Mike Gregory, one of the busiest players on view and always a threat in whatever company he finds himself. Just ask the Aussies!

Other players who could come into the running for places today are David Lyon, Tony Humphries, Ronnie Duane, Billy McGinty and Gary Sanderson, to name but just a few.

When Tony Barrow resigned at Wilderspool, there was much speculation about his successor. Les Boyd was being widely tipped to take over, but in the end the job went to Johnson, the Sydney St. George full back, who had spent three terrific seasons at Wilderspool as a high-scoring and lethal attacking full back.

Within days Johnson, a school teacher, was flying out of Sydney and he was here in time to take charge of the side against Bramley in the second round of the John Player.

Today's match, therefore, will be the first time Johnson has handled his team in First Division competition and it should be quite a contest.



Les Davidson — on the charge for NSW

SKYWAY

VAUXHALL CENTRE

FIRST
FOR



VAUXHALL
OPEL

SERVICE SALES — PARTS



With exclusive Limited Editions including:
Sunroof, Alarm, Radio Cassette, Spoiler,
2 Tone Paintwork, Window Etching,
Body Graphics, Wheel Trims, etc.

SKYWAY & OLDHAM R.L.F.C.
WHAT A TEAM!

Broadway, Chadderton,
Oldham, Lancs. OL9 8BG
Tel: 061-688 7331

PICCADILLY SPORT

The best for Rugby League

Tune in to the best Rugby League coverage in the North West every Sunday between 3pm and 5.05pm on PICCADILLY 1152. It's fast-moving non-stop Rugby League action. . . . it's entertaining and informative. Stuart Pyke and Brian Clarke head the best team of Rugby League reporters around as PICCADILLY 1152 brings you top commentary, in-depth analysis, big competitions and the big names from the world of RL. There'll also be a brand new weekly feature as PICCADILLY links-up exclusively with Australia to bring you all the Rugby League news from Down Under. So make a date with the number one Rugby League team - PICCADILLY 1152 and STONES BITTER - every Sunday - 3pm to 5.05pm.

PICCADILLY
1 1 5 2

Broadcasting on 1152kHz - 261 metres Medium Wave

FIXTURES 1988/89

FIRST TEAM (Stones Bitter Championship)

AUGUST

28 WiganA L 40-18

SEPTEMBER

4 LeedsH L 22-28
11 Featherstone R (3.30)A L 18-14
18 County Cup—Workington.....H W 64-2
25 Castleford (3.30)A L 22-19
28 County Cup — SalfordH L 2-18

OCTOBER

2 Hull K R.....H W 30-16
9 Wakefield T (3.30)A D 12-12
16 SalfordA L 38-20
23 St. Helens.....H L 22-26

NOVEMBER

6 WarringtonA L 32-30
13 John Player — WarringtonA L 21-14
20 Halifax.....H L 12-14

DECEMBER

4 Halifax.....A W 0-12
11 WarringtonH
18 Hull.....A
26 SalfordH

JANUARY

1 LeedsA
7 John Player Special Trophy final
8 WidnesH
15 Hull KR.....A
22 Bradford N.....H
29 Challenge Cup 1st round

FEBRUARY

5 WidnesA
12 Challenge Cup 2nd round
19 HullH
26 St. Helens.....A
(or Challenge Cup 3rd round)

MARCH

5 Featherstone RH
11 Challenge Cup semi
19 Wakefield TH
25 Challenge Cup semi
27 WiganH

APRIL

9 Castleford.....H
23 Premiership 1st round
29 Challenge Cup final

MAY

7 Premiership semis
14 Premiership final

Kick-off 3p.m. unless otherwise stated

★ A new date for the away game at Bradford has still to be fixed.

'A' TEAM (Slalom Lager Alliance League)

AUGUST

24 York (7.30).....H W 38-2

SEPTEMBER

3 Dewsbury (2.30)A L 24-22
10 Featherstone R (2.30)H L 12-18
15 Bramley (7.30)A W 6-18
21 Huddersfield (7.30).....H W 44-7

OCTOBER

1 Lancashire Shield — Leigh.....A W 12-13
5 Wakefield T (7.30)H W 44-18
14 Lancashire Shield — Wigan.....H L 9-10
21 Huddersfield (7.30).....A W 8-34
26 Runcorn (7.30).....H W 30-0

NOVEMBER

5 York (2.30).....A W 23-24
9 Bramley (7.30)H W 48-12
25 Leigh (7.30)A W 10-32
30 Bradford (7.30).....H W 20-6

DECEMBER

10 Barrow (2.30).....A
17 Workington (2.30).....H
31 Doncaster (2.30).....H

JANUARY

7 Trafford (2.30).....A
11 Trafford (7.30).....H
20 Bradford (7.30).....A
25 Dewsbury (7.30).....H

FEBRUARY

4 Challenge Cup (1st round)
11 Doncaster (2.30).....A
18 Challenge Cup (2nd round)
22 Leigh (7.30)H

MARCH

4 Featherstone (2.30)A
11 Barrow (2.30)H
18 Wakefield T (7.30)A
25 Workington (2.30).....A

★ A new date for the away game at Runcorn has still to be fixed.



Old pals in harness. Tony Barrow and his new assistant Derek Whitehead, who spent eight years together at Warrington, look forward to another long partnership here at Oldham (see Watersheddings Survey, page 17).

RUGBY LEAGUE ROUND-UP — 1989 SILK CUT CHALLENGE CUP

THE winners of the 1989 Silk Cut Challenge Cup will receive a record prize of £20,000 — a 10% increase in last year's prize money. The 1989 Silk Cut prize structure is:

		(1988)
Preliminary Round	12 x £1,300	(£1,200)
First Round	16 x £1,300	(£1,200)
Second Round	8 x £2,000	(£1,800)
Third Round	4 x £3,250	(£3,000)
Semi-Finals	2 x £5,500	(£5,000)
Runners-up	1 x £11,000	(£10,000)
Winners	1 x £20,000	(£18,000)
Prize Fund	£107,400	(£98,000)
Capital Dev. Fund	£62,600	(£62,000)
TOTAL	£170,000	(£160,000)

Rugby League's major knock-out tournament opens with a 12-tie preliminary round on Sunday, January 15, the final being staged at Wembley on Saturday, April 29.

The draw for the Preliminary and First Round of the Silk Cut Challenge Cup will be staged at Leeds RLFC on Monday, December 19 and will be broadcast live on BBC Northern local radio network at 10.30 a.m.

The timetable for the 1989 tournament is:

First Round	29/30 January
Second Round	11/12 February
Third Round	25/26 February
Semi-Final (1)	11 March
Semi-Final (2)	25 March
Final	29 April

Seat tickets for the 1989 Final are now available priced £25, £18, £15 and £12, with standing at £7. Order and remittance should be forwarded to The Ticket Office, The Rugby Football League, 180 Chapletown Road, Leeds LS7 4HT, enclosing a stamped addressed envelope.

REFEREE RECRUITMENT

The British Rugby League Referees' Association, the national body of the representative of all Referees Societies, is seeking support in a determined campaign to recruit more referees.

In pursuit of this initiative, which must succeed if referees are to meet unprecedented levels of expansion within the game the Association is appealing for more would-be referees to come forward.

It is anticipated that a favourable response will lead initially to the subsequent strengthening of Referee Societies locally and, as an ultimate exercise benefit the game, in general.

Could you referee a Test match or a cup final?

Would you like to get in the middle of the action and see the game from inside?

If you think you can referee, and have both the courage and conviction to fulfill that role, then we will help you to make a start.

We will put you in contact with your local Referees Society, who will provide you with expert tuition and guidance in your career as a referee.

Write or telephone for information to: David Lowe, Secretary, The British Rugby League Referees' Association, 'Craiglands' 2 Chapel Lane, Eccleston, St. Helens, Merseyside. WA10 5DB. Telephone: (0744) 22463.

1989 COLOUR CALENDAR

The popular Stones Bitter colour calendar is now available for 1989. The 12-sheet calendar measuring 19" x 13" features top quality colour photographs by Andrew Varley and key Rugby League dates plus autographs of the featured stars, who include Lee Crooks, Darren Bloor, Kurt Sorensen, Steve Hampson, Les Holliday, Mike Ford (Oldham), Paul Lyman and Martin Offiah.

The price of the calendar has been pegged at £2.99, plus 75p packing and postage and is available from the Public Relations Department, The Rugby Football League, 180 Chapletown Road, Leeds LS7 4HT.



Mike Ford in action

ROUGHYED REVIEW — 0898 888 637

Seton **ProSport**

FOR PROFESSIONAL PERFORMANCE

**Are happy to be supporting
OLDHAM R.L.F.C.
Season 1988/89**

**Seton
Healthcare Group**

Tubiton House, Oldham OL1 3HS, England.
Tel: 061 652 2222 Telex: 669956 Fax: 061 626 9090

**OLDHAM RUGBY LEAGUE
CLUB
Play in**



WATERSHEDDINGS SURVEY

OUR win at Halifax last Sunday was a great boost for everyone at Watersheddings — just the tonic we needed to go into today's match against Warrington. We didn't only beat the Thrum Hall men, we 'nilled' them. . . and that must be a tribute to the Oldham defence, especially when considering that Halifax took the first-half scrums 8-1.

New boss Tony Barrow, our course, announced soon after his arrival that he would have to work on the defence and the efforts put in by Tony and his assistant, Derek Whitehead, in that direction look to be paying dividends.

The news of Derek's arrival on the Watersheddings scene came too late to be included in the last programme, so it's a welcome home for the former Swinton, Oldham, Warrington and Great Britain goalkicking full back, who left here reluctantly in 1969 because the committee at that time was desperate to raise money to pay the wages.

Derek moved on to Warrington where he spent 17 years, first as player and then as coach. For several of those years, he was Tony's right-hand man in looking after the Warrington 'A' side, and Tony had no hesitation in naming him as the man he wanted for the No. 2 job shortly after his arrival at Watersheddings.

Similarly, it took Derek no time at all to accept his old mate's invitation, so that we now have four men behind the scenes on the rugby side — Tony, Derek, Ian Taylor, the 'A' team coach, and Ossie Rowe, the conditioner.

As you will have read in the press, we have been very active over the past two or three weeks in trying to strengthen our team and squad, and the Barrow regime made its first capture on Friday of last week when the young Widnes full back Duncan Platt was signed in time to make his debut at Halifax 48 hours later.

The Platt fee was £35,000 and we feel we have a bargain in the capture of a young man who has had considerable First Division experience with Widnes, including an appearance in the First Division premiership final at Old Trafford last May, and who is not only a steady and reliable full back, but also a goalkicker of some repute.

We had been linked previously with David Rookley and Gary Hyde of Castleford, and at the time of going to press we had agreed a fee of £15,000 for Hyde, with whom we were ready to have talks last Monday evening.

The Press had also a field day in reporting the talks that went on between Oldham and St. Helens regarding John Fieldhouse.

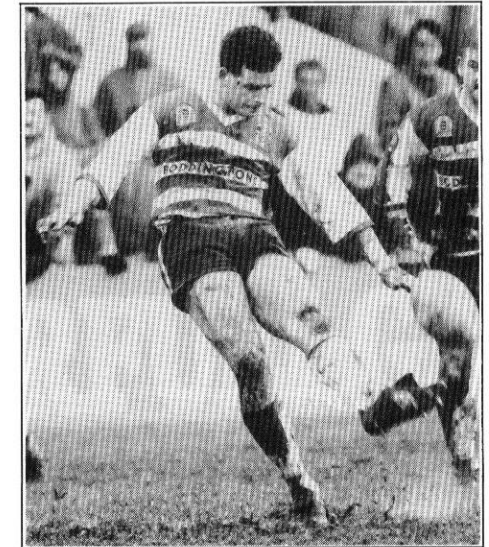
It is also no secret that Tony Barrow is keen to add Fieldhouse to his squad and we did, in fact, make a bid of £65,000 which we believed to be fair and reasonable. St. Helens were sticking out for the full list price of £95,000 and there the matter rests.

While the transfer talk was at its height, we moved in quickly to land Duncan Platt, who is 23 and the brother of Andy Platt, the Wigan and Great Britain forward. Duncan was not on the list and when we enquired about him, Widnes first quoted a fee of £50,000. We offered £25,000 and both clubs then compromised as we fixed a deal at £35,000.

All that was left then was for Tony to persuade the lad that the Oldham club was going places. He contacted Duncan at work and it wasn't long before the player agreed to accept a two-year contract.

He signed on the Friday, trained with his new team mates for the first time last Saturday morning, and did a good job at Halifax on his debut, going through the entire match without putting a foot or hand wrong.

He opened his Oldham account with two goals on a difficult day for marksmen and we believe there will be a lot more goals to come from a young man who looked to have a sound future ahead of him at Widnes until he lost his place through injury and former RU international Alan Tait stepped into the breach and proved such an outstanding success.

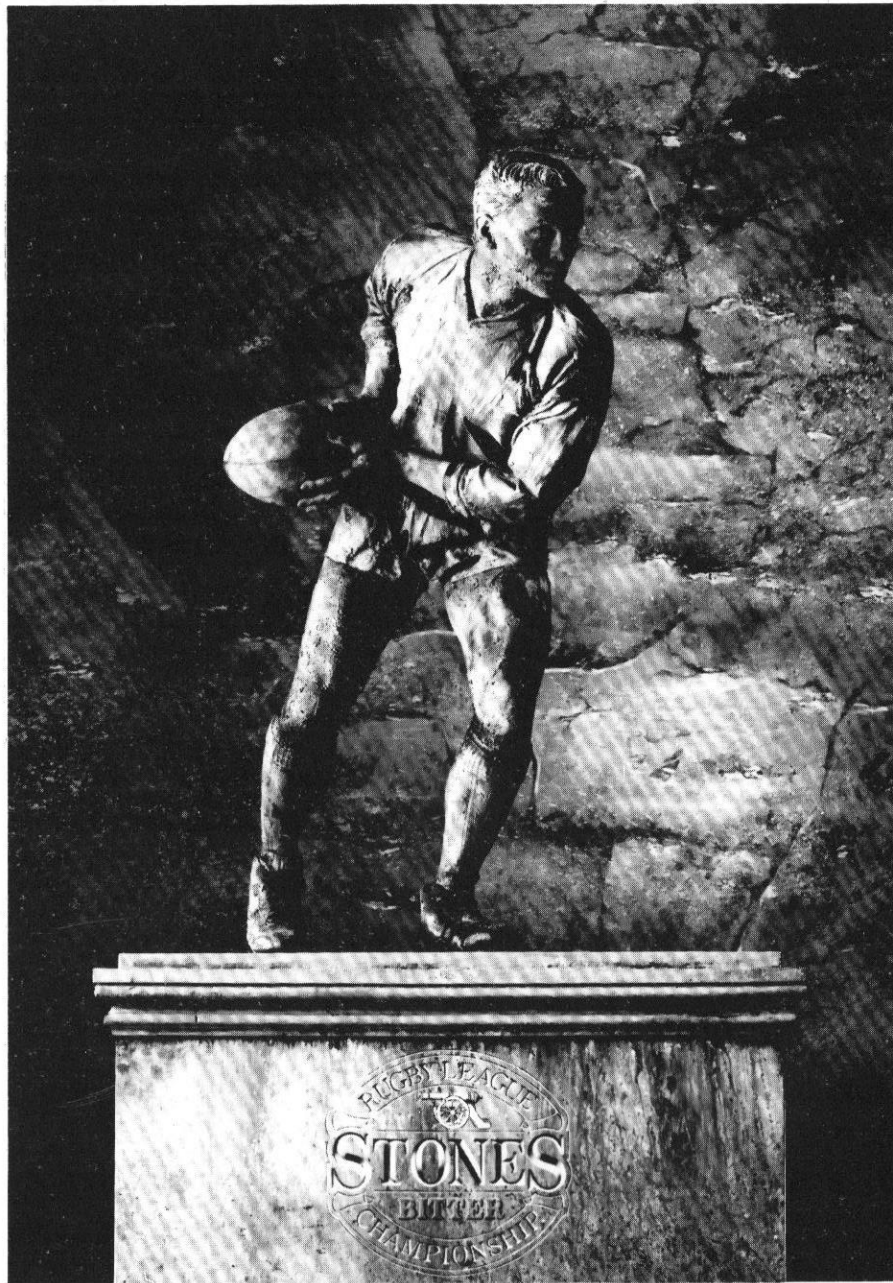


Duncan Platt

RUGBY LEAGUE DIARY 1989

Now available is the John Player Special Trophy Rugby League Diary for 1989. The top class diary, produced by Letts, includes a 24-page Rugby League section featuring photographs, diary dates and a mass of statistics. The traditional diary material includes holidays, calendars, notable dates, a year planner and rail information.

The diary is priced £2.99 plus 50p packing and postage from: The Public Relations Department, The Rugby Football League, 180 Chapeltown Road, Leeds LS7 4HT.



MAJOR SPONSOR OF THE RUGBY LEAGUE.

COMMERCIAL CORNER with RAY HILL

CHRISTMAS is coming. . . and that means that many of our fans will be wanting Oldham Rugby favours and colours for stocking fillers or even major presents.

Our stock caters for all tastes and purses, from Oldham Rugby stickers at 50p to those beautiful ski-jackets at £25. We have a large variety of stock, all of which will make superb Christmas presents for genuine Oldham supporters, so pop along to the shop on the car park and see if there is anything to suit you.

Price List	£
Replica Rugby Shirts (Mens) . . .	21.99
Replica Rugby Shirts (Boys) . . .	17.99
Shorts (Mens)	7.99
Shorts (Boys)	6.99
Socks (Mens)	2.75
Socks (Youths)	2.50
Socks (Boys)	1.99
Lambswool Jumpers	21.00
Sweatshirts (Mens)	16.00
Sweatshirts (Boys)	12.00
Polo T-Shirts	11.99
Ski Jackets	25.00
Roughyeds T-Shirts	3.90
Rugby Balls	10.50
Scarves	2.50
Baseball Caps	3.90
Flat Caps	2.00
Clapper Caps	4.50
Bags	5.50
Key Rings	1.20
Metal Badges	1.20
Videos	10.00
Pennants	1.75
Stickers	0.50
Club Ties	4.50
Lifeline Ties	4.50
Terry Flanagan Benefit Ties . . .	4.00

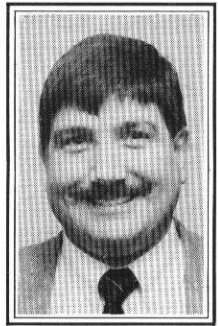
Lifeline

THE Lifeline membership continues to grow steadily and we are delighted to report that we are now casting our nets far and wide.

Last week's Lifeline draw actually took place out at Gisburn in North Yorkshire, where we have quite a lot of members as a result of our chairman Harvey Ashworth's

business interests up there.

I would like to thank everybody who applied for the recent collectors' job in our Development Association. The position has now been filled. To those who were unsuccessful I would like to say thanks for your interest and please do not hesitate to contact us again when a vacancy comes up.



Incidentally, there will be scope for some additional canvassers in the New Year and we would like to hear from anybody who might be interested in doing that sort of work on our behalf.

Talking of the New Year, reminds me that Christmas is just around the corner.

On behalf of the Development Association, I would like to wish all our collectors, ticket sellers, customers, sponsors, supporters, players, directors, employees and office staff all the very best wishes for a Happy Christmas and a prosperous New Year.

On a personal note, a special Christmas thank-you to Sue and Karen, who do an enormous amount of work behind the scenes in the Development Association.

One last word — and it concerns 1989. We must all strive hard to make the new year a brilliant year for the club. It is bound to be an historic one so far as the share issue is concerned, and it would be appropriate to make 1989 a record-breaking one so far as commercial activities are concerned.

By pulling together as a team — every one of us — I am sure we can make that happen.

CASHLINE HOTLINE
061-620 4870

Terry Byrom & Son

QUALITY BUTCHER

Hilton Arcade
Oldham Market

For Quality and Civility
Phone: 061-624 2331



MILES STREET
OLDHAM
Telephone:
061-626 3366

**WALL & FLOOR TILE
IMPORTERS & DISTRIBUTORS**

For all Your Tiling needs
including

COSMIC

SANOPAL

Manufacturers and Installers of Aluminium, uPVC, Hardwood
and Softwood Windows, Single or Double-Glazed

also

Patios & Residential Doors

★ Up to 10 years to pay (details on request)

★ Trade Enquiries Welcome

**FOR A PLEASANT EXPERIENCE
IN 'WINDOW SHOPPING'**

SANOPAL LTD

061-665 3069 or 061-620 5580

For your free quotation without obligation

OMC FORD
OLDHAM

Manchester Road,
Werneth
Oldham

Tel: 061-652 2411

FORD MAIN DEALER
OLDHAM · MACCLESFIELD · CHORLEY

'TOP TIER' Wedding Cake Craft Showroom
2 New Street, Uppermill, (open daily)

J. W. BUCKLEY LTD. Craftsmen Bakers, Catering our speciality
The Square, Uppermill, Saddleworth Tel: 04577 2175

We specialise in wedding and celebration cakes of distinction.
Visit our showroom and select a cake of your choice

THERE'S A NEW CAPTAIN

AT THE **BOATYARD**

NEW CARVERY EVENINGS

Wed-Sat £7.50 inclusive

or select from our a la carte menu

Hot or Cold buffet Lunches from £2.50 inclusive

12 till 2.30pm

We cater for Weddings, Parties & Xmas Bookings now being taken

THE
BOATYARD
RESTAURANT

Grains Road,
Shaw, Oldham
Tel: Shaw (0706) 841460

BRITISH COAL IN THREE-YEAR SPONSORSHIP DEAL

Promoting the game at the grass-roots

British Coal are investing £120,000 in the three-year promotion of Rugby League's new pro-am joint development programme.

The grass roots investment by British Coal — backers of the first-ever and highly successful professional, nine-a-side tournament last year — is the biggest Rugby League cash support outside competition sponsorship.

The recruitment of British Coal is a major coup for the recently-formed Rugby League Foundation, a 10-man pro-am body with Charitable Trust status formed to encourage and finance the development of the game, particularly at school and youth level.

During its first year of operation, the Foundation has injected £100,000 into the development of the amateur game, with plans to double that investment in the next 12 months.

A corner-stone of the joint development scheme will be the introduction of an elite under-19 midweek league involving representative sides based on district advanced training centres, to be titled "The British Coal National Youth League."

The British Coal financial support will be directed towards travel grants for this new youth set-up; the costs of the establishment of centres of excellence and advanced training centres; and financing a general development programme.

Announcing the £120,000 three-year promotion, British Coal Chairman Sir Robert Haslam said in Leeds:

"We're convinced this joint venture between the Rugby Football League, BARLA and the Sports Council has exciting prospects for the growth and development of the sport, and British Coal are delighted to be associated with that progress. The amateur game, with more than 600 clubs, is the lifeblood of the sport, nurturing and grooming the stars of tomorrow without whom no sport can survive.

"Mining's links with Rugby League are legendary. Many of the great names of yesteryear and the present are mining men, and miners generally are among the most ardent supporters of the game. It's a hard, exciting, robust sport with a healthy future, and that mirrors the prospects for the British coal industry. It's very much part of the "New Face of British Coal" — the slogan of the industry's major advertising campaign and sales drive — and we hope our continued

involvement with the Rugby League will prove a successful and lasting partnership."

The Trustees of the Rugby League Foundation are Bob Ashby, Les Bettinson, Harry Jepson, David Oxley, Joe Seddon, Roy Waudby and David Wigham from the Rugby Football League; Bob Beal and Maurice Oldroyd from BARLA; and Bill Watt representing English Schools. Sports Council official Robin Barron has also been invited in an advisory capacity.

Rugby League Chairman Bob Ashby said: "We have the expertise within the game to mastermind a progressive development programme. It is outside funding such as British Coal's investment which will help speed along those vital plans."

BARLA Chairman Alan Gibb commented: "Our stated policy is national expansion by the code's centenary in 1995 and such significant financial input from a body of the calibre of British Coal is a major boost."

The new Oldham pro-am under-19 team — at this stage a lot more 'am' than 'pro' — will play its first home game in the new British Coal League against Wakefield at Watersheddings on Wednesday.

After heavy defeats by Wigan and St. Helens, two sides that included several young professionals, Oldham hope to hit winning ways against the Yorkshiremen.

Says David Atherton, an official of the newly-formed Oldham-area committee that will run the side: "We have developed good relations with the professional club and we hope soon to be in a position to silence our critics.

"We see our role as one that will do more than fulfil Oldham's commitments in the British Coal League, but also develop under-19 rugby in Oldham by combining the talent of the amateur clubs with the resources of the pro club.

"With the large amount of up-and-coming talent in Oldham, we feel this scheme is the best way forward.

"It is certainly a disadvantage to play teams including several young professionals, but we are encouraged by Oldham coach Tony Barrow's plans for the future development of a youth policy at Watersheddings.

"We are also heartened by the fact that a large number of our present players have another year at this level. Three of them, of course, have been picked for the Great Britain squad."

P.D. Bradbury

Your Local
Video Recording Service
Sports, Weddings,
Parties, etc.
In Full Colour and Sound
Tel. 061-665 2903

BUTTERWORTHS Fish & Chips Cafe & Take Away

104/106 Union St.

For the very best in traditional foods.

Open Mon-Sat Lunch 11.30 am-2pm
Thurs-Fri-Sat Teas 4pm-6.30 pm.

**TILE in
STYLE**

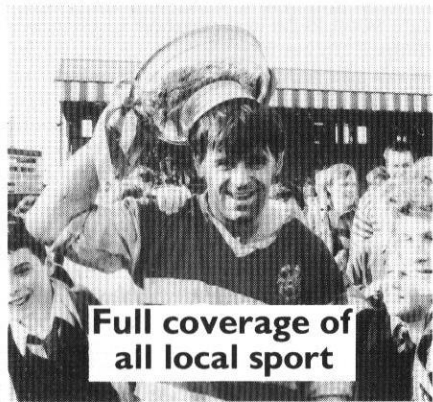
CERAMIC WALL AND FLOOR TILING SPECIALISTS
TEL (MOSSLEY) 04575 4142

PROPRIETORS: ROGER MATTHEWS, DAVID FIELDHOUSE
143 STOCKPORT ROAD, MOSSLEY, OL5 ORD.
telephone: 04575 4142



TELEPHONE (061) 624 5329/ (061) 652 0204
THE PEOPLE WHO KNOW MONEY MATTERS SHOPACHECK
FINANCIAL SERVICES LIMITED
DIVISIONAL OFFICE
17 UNION STREET
OLDHAM, GREATER MANCHESTER OL1 1HA
BRANCHES: HYDE, ROCHDALE, BURY, BOLTON, STOCKPORT.

We've got the news



Full coverage of
all local sport

every night in the
EVENING CHRONICLE

LAWRENCE PERRINS & SONS LTD

Plumbers, Electricians &
Heating Engineers

Domestic & Industrial
Installations

**176 Oldham Road
Springhead
Near Oldham**

Telephone: 061-624 1723 & 3798



ACTION MEN! Neil Clawson (above) test the Halifax defence in our 12-0 win at Thrum Hall last Sunday, while Paul Round (below) falls to a good tackle during his man-of-the-match display.



North West Decoiling Ltd.

Steel Stockholders
Decoilers and Shearers

Telephone:
0925 415111

Telex:
627135

TECH (Jacquard) LTD

LAMBSWOOL & ACRYLIC SWEATERS
SWEATSHIRTS, T.SHIRTS, TIES ETC.

Official Suppliers of Embroidered
Sweaters & Ties to
Oldham Rugby League Club

Contact Mike Flint -0925 63555
To promote your Company or Club
image Specialists in Embroidered
Jacquard Knitwear Jacquard Woven
TECH Ties

TECH (Jacquard) LTD.
9 KNUTSFORD OLD ROAD, GRAPPENHALL,
WARRINGTON WA4 2LD.

Also suppliers of Gold and Silver
Wire Blazer Badges, Company
Flags, Printed Tee Shirts and
Sweatshirts etc.

Orders from
Amateur R.L. Clubs
welcome



Specialists in:
100% WATERPROOF CLOTHING
THERMAL SOCKS & CLOTHING
WINTER WARM JACKETS
Also equipment for:
WALKERS, SKIERS, WATERSKIERS
SAILORS, DIVERS, WINDSURFERS,
CANOEISTS
10% DISCOUNT ON PRODUCTION OF
THIS AD

**Oldham Water
Sports**
ALL SEASONS HOUSE,
PARK ROAD, OLDHAM,
TEL: 061-626 0574

APPEARANCES AND SCORERS 1988/89

OLDHAM PLAYING RECORD (14 POSSIBLE) (Including Subs)

	App	G	DG	T	Pts	Total App
K. Meadows	14			6	24	56
R. Irving	4			1	4	19
D. Foy	5			2	8	181
C. McAlister	7	18		2	44	25
P. Lord	2			1	4	13
M. Ford	12			2	8	31
I. Bates	2					4
I. Sherratt	5			1	4	24
M. Hall	1					9
H. Waddell	2					54
C. Hawkyard	12			4	16	188
P. Round	14			6	24	47
T. Flanagan	11					284
S. Patterson	3					3
L. Casey	13			4	16	24
M. Burke	7	17		1	38	50
A. Ruane	13	10	1		21	13
N. Clawson	12					64
P. Taylor	8			1	4	31
K. Atkinson	4	2			4	33
J. Fairbank	10			2	8	10
C. O'Sullivan	11			1	4	11
A. Gilbert	7			4	16	7
A. N. Other	3			1	4	3
J. Henderson	9			4	16	9
S. Robinson	8			3	12	16
R. Marsden	1					6
M. Bardsley	4			2	8	14
T. Nadiola	2					66
T. Morrison	3					18
D. Platt	1	2			4	1

STONES BITTER CHAMPIONSHIP

	P	W	D	L	F	A	W	D	L	F	A	Pts
Castleford	9	5	0	0	159	59	3	1	0	78	54	17
Widnes	9	4	0	0	144	18	3	0	2	114	79	14
Leeds	11	3	0	3	103	87	4	0	1	114	70	14
St. Helens	10	3	1	1	106	78	3	0	2	93	136	13
Salford	11	5	0	1	132	104	1	0	4	98	150	12
Warrington	9	3	0	1	96	91	2	0	3	82	74	10
Featherstone	10	3	0	3	119	155	2	0	2	68	107	10
Bradford N	9	2	0	2	101	76	2	0	3	123	107	8
Wigan	9	3	0	2	128	90	1	0	3	70	88	8
Hull	10	1	0	3	36	60	3	0	3	87	111	8
Wakefield	10	2	1	3	97	129	1	0	3	60	112	7
Halifax	10	2	0	3	62	76	1	0	4	39	80	6
Hull KR	10	3	0	2	111	104	0	0	5	60	150	6
OLDHAM	11	1	0	3	86	84	1	1	5	125	162	5

J. W. MINTON & CO.

CHARTERED ACCOUNTANTS

95 HIGH STREET, LEES, OLDHAM OL4 4LY
59 MARKET STREET, SHAW, OLDHAM OL2 8NP
Telephones: 061-626 4297/061-626 4274



PAUL STUART & Co.

(PENNINE HYDRAULICS)

HOSE DISTRIBUTORS—RUBBER P.V.C. TUBING COUPLINGS

Rubber Sheet, Sponge Rubber Mouldings.

20 Commercial Rd.,
(off Greaves Street)
Oldham. OL1 1DD.
Tel. 620 4129

EDWARDS VEEDER CHARTERED ACCOUNTANT

Full Accountancy service to small businesses,
self employed & Limited Companies

*Taxation * VAT
*Inland Revenue * Investments
Enquiries *Company Accounts
*Book-Keeping

*PAYE Computerised

061 620 2133
Brunswick Square,
Union St., Oldham.

NORMAN LEISURE

GRAINS ROAD, SHAW
Tel: 0706 841460

TOTAL SPORTS FACILITIES

SNOOKER

BADMINTON

GYM

SAUNA

SK ELECTRONICS

(Clickgrange Ltd)

Manufacturers of Electronic
Equipment, Printed Circuit & Micro
Electronic Design Engineers

**REGENT STREET
OLDHAM, LANCASHIRE**
Tel: 061-620 5414. Telex: 665347



Unit 3, St. Johns Industrial Estate
St. Johns Street
Lees, Oldham
Tel: 061-626 3866 & 061-626 3728
061-627 1360 (Sales Office)
Warrington (0925) 416728

MATCH REPORTS

OLDHAM 12, HALIFAX 14

THIS was a vital game — Tony Barrow's first in charge and a crucial 'four pointer' against a Halifax side that was one place above us in the table. Tony was well pleased at half-time when we led 12-2. We were still 12-2 ahead with 20 minutes to go, but then it all began to go wrong and, in the end, Halifax were allowed to come back from the dead, as it were, and snatch victory at 14-12 with two late tries by sub winger Rob Hutchinson and speedy centre Tony Anderson.

There was a touch of good fortune about Anderson's winner, but it would be foolish to blame that on the defeat. Tony must have learned a thing or two from his first match at Watersheddings, and there will probably have been one or two changes in the subsequent matches.

John Henderson scored an early try after good build-up work, Paul Round scored a beautiful solo from half way when coming into the line from fullback, and Charlie McAlister kicked two goals.

HALIFAX 0, OLDHAM 12

Well done, Oldham. This was a match we had to win and, in truth, there was seldom much doubt after Paul Round's second-minute try, goaled by debut-boy Duncan Platt had given the visitors the best possible start.

Full marks to everybody, but especially to the pack and half-backs. The forwards did a terrific job to subdue the Halifax forwards and the fact that Halifax failed to score is all the more remarkable when considering how much ball they had. In the first-half alone, they had possession from eight of the nine scrums.

It must have been a very encouraging performance for coach Tony Barrow who has been working hard to stiffen the defence since his arrival a month ago.

A Platt penalty midway through the first half increased our lead and it was 8-0 to Oldham at half-time. For a spell early in the second half, Halifax looked as though they might put us under a lot of pressure, but we weathered the storm, got back on top, and secured victory with a blockbusting try by Charlie McAlister in the corner after good work by Neil Clawson and Paul Taylor.

LEIGH 'A' 10, OLDHAM 'A' 32

THIS was not one of the 'A' team's better performances, but the result was right and it kept the side snapping at Featherstone's heels at the top of the Slalom Lager Division Two table.

Oldham led 14-10 at half-time thanks to tries by Mick Bardsley, Ashley Gilbert and Tom Nadiola and a goal by Keith Atkinson. In the second half, Oldham's strength told its tale in the last quarter of an hour when further tries were scored by Chris Willis, Gilbert and Trevor Croston, Atkinson adding another three goals.

OLDHAM 'A' 20, BRADFORD 'A' 6

THE visit of Slalom Lager Division Two promotion rivals Bradford to Watersheddings produced a crowd of more than 1,000 to witness a slick opening spell by Oldham, who raced into a 12-0 lead inside half an hour. Paul Lord and Paddy Kirwan scored tries, Charlie McAlister kicking two goals, and Oldham also missed at least three-clear chances: so much were they on top.

Unfortunately, the pattern went astray in the second half. Two more tries were scored, but one was merely the result of Paul Lord's pace and opportunism. The final try, scored by Tony Morrison, was the result of a good, set-move, in which Martin Hall put Morrison over at the pavilion corner.

CASHLINE HOTLINE — 061-620 4870

Kenneth F. Fisher

Textile Machinery

Reconditioned Textile Machines

Service and Spares

Consultancy and Fitters Services

UNION STREET
ROYTON
OLDHAM OL2 5JD
Telephone: 061-624 0641
Telex: 665217

PARK CAKES

A Slice of Tradition

The Park Cake Bakeries Limited
Ashton Road, Oldham, Lancashire OL8 2ND Telephone 061-633 1181 Telex 668738

AUSTINS FOR TIMBER

**NEW TIMBER
LOWEST PRICES**



Head Office: Medlock Sawmills, Shaw Road, Oldham. Tel: 061-652 5421. Telex: 666505
Depots at: Manchester 061-834 8505 · Rochdale 47208 · Ashton 061-308 3746
Oldham 061-620 2128 · Bury 061-761 6416 · Sale 061-973 9578