

**MAIN STAND
WORKSOP ROAD ENTRANCE**

**SHEFFIELD EAGLES
V
OLDHAM**

**SUNDAY 14TH OCTOBER 1990
KICK-OFF 3:15 P.M.**

**STONES BITTER CHAMPIONSHIP
FIRST DIVISION**

£	ADULT 5.00	£	CONC. 3.00	TICKET No.	00297
----------	-----------------------------	----------	-----------------------------	-----------------------------	--------------

TO BE RETAINED

SHEFFIELD EAGLES RUGBY LEAGUE CLUB LTD

FOUNDED 1984

OFFICE: 484 Penistone Road,
Sheffield S6 2FU
Tel: (0742) 337664 Fax: 314251

GROUND: Sheffield International
Stadium (Don Valley),
Attercliffe Road, Sheffield 9

HONOURS

Great Britain International: Daryl Powell
Great Britain Under 21 Internationals: Anthony Farrell,
David Mycoe, Sonny Nickle
Yorkshire County: Daryl Powell
Rugby League Top Points and Goalscorer: Mark Aston
1988/89

CLUB RECORDS

1988/89 Promoted to First Division
1988/89 Second Division Premiership Winners
1989/90 Wigan Summer Sevens Winners

TEAM SPONSORS

WHITBREAD



PERSONNEL

OFFICIALS:
President: T. Sharman
Directors: G. Hetherington, K. Hetherington, R. Pepper
FULL TIME STAFF:
Administration: G. Hetherington, J. Bush, J. Munton,
L. Moffat
Cashline: B. Lajo
Schools Coaches: D. Powell, M. Aston
MATCH SPONSORSHIP: D. Fyfe

TEAM MANAGEMENT:
Coaching: G. Hetherington, S. Ferres,
H. Cartwright, E. Fitzsimons
Medical: M. Taylor (Doctor), C. Burke (Dentist),
R. Duffield (Physiotherapist)
Equipment: L. Hetherington

SUPPORT CLUB:
A. Gough, D. Fyfe, J. Lack, D. Rankin,
B. Minshall, L. Moffatt, R. Bannister

VICE PRESIDENTS

ALUMINIUM SYSTEMS
ANALYSIS FINANCIAL SERVICES
ASHFORD COMMUNICATIONS
W. BALL & CO.
D & J BARROW
A. BENTLEY
BOXALLS RESTAURANT
BICKERTON GARAGE
C. BETTS
J. BAUER
CARFOUR
CONSTANT SECURITY SERVICES
CHURCHILLS
J. CORNWELL
CURTAIN COMPANIONS
DEREK LANE CABLES
DESPAC
J. DYSON
EVENORT LTD
FERSINA INTERNATIONAL
FIVE D TOGS
GEI SPECIAL STEELS
GA PROPERTY SERVICES
GMS COMPUTING LTD

H. HEBBLETHWAITE
J. HEMINGWAY
J. HOBBS
D. HARRISON
E. HUGHES
P. HAYDOCK
IRWIN MITCHELL
KING, TAUDEVIN
LAUGHTON STEELS
LAVENDER INTERNATIONAL
LANDIN WILCOX
V. LAGO
MIDLAND BANK
MARSON IND. SUPPLIES
M F H GROUP
FE MOTTRAM
MARLOW GROUP
I. MICKLETHWAITE
NORTH DERBYSHIRE NEWSPAPERS
OMEGA GROUP
D & R PALMER
PENNINE BUSINESS FORMS
PRECISION CASTPARTS CORPS

PRIMESTOCK
PASUDA
POPPLETON & APPELEY
B. PEMBERTON
RUANE TECHNICAL PRESS
R & Bs UPTOWN BAR
ROYAL OAK
ROYAL VICTORIA HOTEL
RUSSELL & CRESWICK
K. RENWICK
SHEFFIELD ALUMINIUM
WINDOWS
SENAITOR WINDOWS
SHEFFCUT TOOLS
SYT
A. SPENCER
B. SAMMONS
A. SCOTT
TEMPERED SPRING
WILLIAM STONES
D. WISH
WHITBREAD
A. WILBY
YORKSHIRE WINDOWS

WELCOME

from Gary Hetherington

The opening month of the season has certainly provided Rugby League fans with some fascinating matches and results. The highly competitive nature of the First Division has resulted in a string of close scores, with every team except Rochdale recording a win and only Hull remaining unbeaten.

For those fans looking for exciting finishes then Sheffield Eagles are the team to follow. The nail biting last ten minutes at Central Park, Wigan on the opening day was followed by an equally absorbing contest against Rochdale. Almost the whole of the Wakefield match belonged to us but Warrington brought us down to earth with the narrowest of victories by 22-20. Last week at Featherstone we once again scored over 20 points, but were left to rue a succession of costly penalties which proved to be our downfall.

The closeness of matches puts even more pressure on the referee and we can see how influential he is becoming in the final outcome on so many occasions. Coaches and fans now have the benefit of the video to scrutinise decisions. In the Warrington match we could clearly demonstrate that Sonny Nickle scored what would have been a match winning try and that Mark Gamson did likewise at Wigan.

While we can feel a little aggrieved over the past few weeks, decisions for and against tend to even out throughout the course of a long season, let's hope they take a turn in our favour before too long.

CONGRATULATIONS to all those who participated in the SPONSORED WALK to Featherstone, your efforts were much appreciated by the players. Thanks also to the hundreds of people who pledged money through sponsorship. Pat Parkinson once again did a marvellous job in surpassing her total of last season (over £600) — the money raised will be put to good use.



CONTENTS

Page	
6*	Around and About, <i>Tim Wilby</i>
8	Know the Game, <i>Tim Butcher</i>
10	Clubshop
12	The Aussies Are Here
14/15	Alliance Report
18/19	Player Profile - Mark Gamson
22/23	Support Club
23	Competition
27	Team Photo
30	Development Update
33	Flashback
34	Fixtures: Results & Sponsors
36	Teams

SEASON TICKET OFFER

ADULT £50

O.A.P. £27

JUNIORS £10

Postal application to: 484 Penistone Road, Sheffield S6 2FU or call at the Eagles' Office any weekday between 9.15 and 4.15 pm.

Benefits include: Admittance to all home league matches. Reserved area under cover in Main Stand. Admittance to members clubroom and canteen (under 17s). Priority purchase on cup tie tickets.

FREE FULL COLOUR FIXTURE LISTS AVAILABLE FROM THE EAGLES OFFICE

TODAY'S VISITORS

We welcome to Sheffield International Stadium, **OLDHAM RLFC**. Founded in 1895 and known as the ROUGHYEDS. After some investigative reporting I found out that the nickname ROUGHYEDS was given to the people of OLDHAM who used to make hats in the town some 150 years ago. The name ROUGH HEADS was adopted by the Rugby League Club and shortened to ROUGHYEDS.

Oldham were the first Lancashire team to win the Rugby League Challenge Cup in 1899 defeating Hunslet 19-9. Names from the past include Forward, Joe Ferguson who appeared in 634 matches between 1899-1923. The names of Jim Lomas, the first Lions tour captain in 1910, Tom Holliday, Bernard Ganley (219 goals in 1957-58 season), Derek "Rocky" Turner and Keith Jackson spring to mind when talking about the Roughyeds.

In the late 70s as Rugby League progressed into a money sport, Oldham avoided being involved in an over priced players market by adopting a youth policy under coach Frank Myler, the success of this was reflected in 1984 when five Oldham players, Andy Goodway, Mick Worrall, Terry Flanagan, Ray Ashton, Des Foy all toured along with Great Britain to Australia.

Present coach Tony Barrow is also a great believer in the youth policy as showed in the 1989-90 Second Division Premiership victory over Hull K.R. The names of ex-Sydney Western Suburbs player JOHN COGGER, DUNCAN PLATT, new signing NORMAN FRANCIS, industrious scrum half, MIKE FORD, along with youngsters TOMMY MARTYN, TONY BARROW, JNR, and NEIL FLANAGAN hold the key to Oldham surviving and becoming a major force in the First Division.

TODAY'S PRE MATCH ENTERTAINMENT

WHITBREAD TOUCH RUGBY LEAGUE FINALS
Freedom House -v- Noahs Ark Fox Inn -v- Wellington

HALF TIME — Under 9's Mini League between Eagles Juniors and Stocksbridge.

A collection will be held in the main stand at half time in aid of the clubs.

BIG MATCH SPONSOR



PRIMESTOCK (SHEFFIELD) LTD.
Roman Ridge Road, Sheffield S9 1FF.
Telephone: (0742) 432111 Telex: 547365
Fax No. (0742) 433157

*PRIMESTOCK QUALITY MEAT WHOLESALERS
SPECIALISTS IN FRESH AND IMPORTED MEATS*

ASSOCIATE MATCH SPONSOR



Meadowhall
41 Amos Road
Sheffield S9 1BX

Telephone: Sheffield (0742) 561144
Fax: Sheffield (0742) 431562

MATCH BALL SPONSOR

Orgreave Crescent,
Dore House Light Industrial Estate,
Handsworth, Sheffield S13 9NQ.

Telephone:
(0742) 695600 and 697070
Fax: (0742) 696187

**Sheffield
ALUMINIUM
WINDOWS LTD**



on the ball in the field of travel

WOODCOCK TRAVEL ✪

SHEFFIELD-WICKER TEL: 767151, FURNIVAL GATE TEL: 729714
ARUNDEL GATE TEL: 768784, FULWOOD ROAD TEL: 671150
BANNER CROSS TEL: 670839, HILLSBORO' CORNER TEL: 852853
STATION ROAD, CHAPELTOWN TEL: 570571
SOUTHGATE, ECKINGTON TEL: 433751
MARKET SQUARE, WOODHOUSE TEL: 540541
AND BRANCHES AT
Bakewell, Barnsley, Chesterfield, Doncaster, Rotherham,
Wickersley and Worksop

*ONE CALL
BOOKS IT ALL*

AROUND AND ABOUT

DAVID 'NELLY' NELSON

DAVE "NELLY" NELSON was the butt of quite a few jokes from the Eagles players after a slight car accident in Leeds before training. Yours truly suggested that Nelly had no passengers on the return journey to Leeds after training at Sheffield. However Nelly had the last laugh as I proceeded to reverse into one of the lamp-posts in the car park.

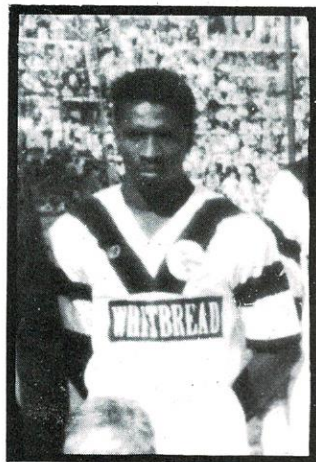
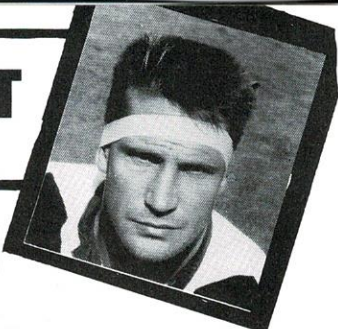
Sheffield Eagles gift shop is promoting for Xmas, Teddy Bears dressed in Eagles playing strip. Rumour has it that Neil Kellet was the original model.

The press was quick to report recently the feud between a top RU convert and a GB player over money. It was revealed here in this column in September.

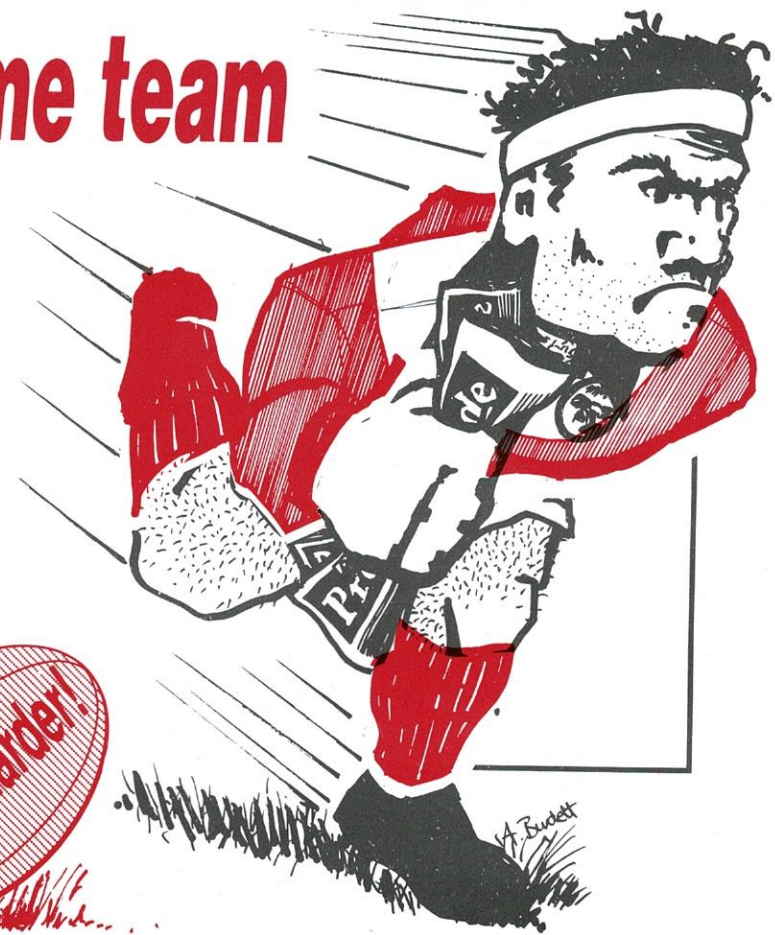
Congratulations to all Sheffield Supporters from Eagles players, who participated in the sponsored walk to Featherstone last week. Boss, Gary Hetherington, is considering sending some Eagles players on the route march after Eagles defeat last week.

Well deserved call up to the GB squad for Captain Daryl Powell for the First Test at Wembley. Daryl hopes Eagle supporters will travel to Wembley to support him and his GB team mates do battle against the Aussies.

All Eagles players would like to apologise to the faithful Sheffield supporters after 2 disappointing performances. We are going to put things right this week with a much improved display against today's visitors OLDHAM.



.. the unbeatable home team



TODAY'S FIXTURES

British Coal Tour Match

Wigan -v- Australia 3.00

Stones Bitter Championship First Division

Castleford -v- Wakefield Trinity . . . 3.30
 Hull KR -v- Widnes 3.00
 Leeds -v- Featherstone Rovers 3.00
 Rochdale H -v- Bradford N 3.00
 Sheffield Eagles -v- Oldham 3.15

Stones Bitter Championship Second Division

Bramley -v- Chorley 3.30
 Carlisle -v- Ryedale-York 2.30
 Dewsbury -v- Swinton 3.30
 Halifax -v- Runcorn Highfield 3.00
 Keighley -v- Fulham 3.15
 Huddersfield -v- Leigh 1.00
 Nottingham C -v- Workington T . . . 3.00
 Salford -v- Barrow 3.00
 Trafford B. -v- Hunslet 3.30
 Whitehaven -v- Doncaster 3.30

KNOW THE GAME

TIM BUTCHER

PLAY THE BALL

The Play the Ball is unique to Rugby League and occurs after a tackle has taken place.

Many of the laws governing the play the ball will stir some painful memories amongst Eagles fans who were at Featherstone last Sunday who saw their team give away plenty of penalties for play the ball offences — three of them converted into points.

First — the rules:

★ A tackled player must be released and not touched until the ball is back in play.

★ The tackled player must regain his feet **WHERE HE WAS TACKLED, NOT 10 METRES UP THE PITCH**, lift the ball clear of the ground, face his opponents goal-line and drop or place the ball in front of his foremost foot.

NO PART OF THE PLAYERS PERSON may be in contact with the ground except his **FEET** when the ball is released.

★ One opponent may take up marker position immediately opposite the tackled player.

★ When the ball touches the ground, either player may kick or heel the ball in any direction, but dangerous or premature kicking will be penalised.

★ The ball is in play when it is clear of the two players involved. If no marker is in position the ball is clear as it touches the ground. **THIS MEANS A PLAYER CAN PLAY THE BALL FORWARDS — TO HIMSELF.**

★ An **ACTING-HALFBACK** from both teams can take up position immediately and directly behind their own player involved in the play the ball, and must remain in this position until the ball has come clear of the play the ball.

RULES CLINIC

Some Referees are pretty keen at play the ball situations. Here's some popular offences and the referees signals.

1. Tackled player delays regaining his feet — Ref flicks his hand in an upward direction.



2. Tackled player dummies when dropping the ball — exaggerated mime.

3. Tackled player fails to drop the ball correctly — points to the side or through the legs.

4. Tackled player does not lift the ball clear of the ground — lifting movement with the hand.

5. Tackled player does not face opponents goal-line — stand at angle and then towards goal-line.

6. Tackled player passes instead of playing ball — mimes play the ball.

7. Tackled player obstructs or butts his opponent while or after play the ball — mimes his action.

8. Marker kicks prematurely or dangerously — mimes the action.

9. Player marking retains his hold on player playing the ball — makes a decisive backward movement with the hand.

10. Tackler delays releasing tackled player (a very popular one as defences attempt to slow down the attack) — Ref makes a downward movement with hands in front of the body below the waist.

11. Acting half-back is not immediately and directly behind his player involved in play the ball — Ref will hold arms upwards in line and out of line.

Some would say a lot of play the ball penalties are just nit-picking, but with an average of 300 play the balls in every game its important that the ball is brought back into play as quickly and as efficiently as possible.

There is no excuse for professional players not to comply with the play the ball rules.



SONNY IN ACTION — Sonny Nickle on the charge against Warrington 'AVAGO

1. TEAMS

Who, in 1914 finished seven points clear at the top of the table, but lost to Salford in the Championship Final?

2. PLAYERS

Who held career try scoring record for two clubs at the end of the 1987/88 season?

3. CHALLENGE CUP

Who, in 1980, was awarded a penalty after being fouled in the act of scoring a try at Wembley?

4. INTERNATIONAL

How many brothers played for Australia in the First Test of the 1967 Ashes series?

5. GREATS

Who equalled the record of four tries in a match for England in 1975?

6. MISCELLANEOUS

Which Rugby League player was awarded an MBE after being featured on "This is Your Life"?

AR

BESPOKE TAILORS & GENTS OUTFITTERS

ASHLEY ROGERS

WIDE SELECTION OF READY TO WEAR CLOTHING

CUSTOMERS OWN CLOTHS TAILORED

920 CITY ROAD · SHEFFIELD S2 1GQ · TELEPHONE: 399800

ANSWERS: 1. Huddersfield 2. John Buckton (Doncaster and Mansfield Marksman) 3. Steve Hubbard 4. Three — Gleeson; Gallagher and Mantelk (all from Past Brothers, Brisbane). 5. Keith Fielding 6. Clive Sullivan

CLUB SHOP

A great selection of souvenirs and leisure wear are now available at the ground on matchdays or at the Eagles office during the week.



Team Shell Suits (S: M: L: XL)	£45.00	New Club Ties (Blue, Black & Grey)	£5.50
Team Shell Suits (24, 26, 28, 30, 32")		Eagles T-Shirts (Red & Black) (L, XL)	£4.95
Home Replica Team Shirts (34/36; 38/40; 42/44"; 46/48).....	£24.95	Designer Bins	£4.95
Away Replica Team Shirts (34/36; 38/40; 42/44"; 46: 58).....	£24.95	New Bar Scarves.....	£3.25
Home Replica Team Shirts (22/24; 26/28; 30/32")	£18.95	Baseball Caps	£3.50
Away Replica Team Shirts (22/24; 26/28; 30/32")	£18.95	Satin Banners	£3.25
Club Sweaters (Red & Black) 36-48") ...	£19.95	Flat Caps	£3.25
Golf Umbrella	£10.00	Club Scarves	£2.95
Eagles Rugby Balls	£9.95	Desk Sets	£2.95
Match Videos	£9.95	Metal Badges	£1.50
Bath Towels	£9.95	Pennants	£1.50
Luxury Satin Banners	£7.95	Mini Kit Stickers.....	£1.50
Daryl Powell T-Shirts (M, L, XL)	£6.95	Toothbrush Holders.....	£1.00
Mark Aston T-Shirts (M, L, XL).....	£6.95	Soap Box	£1.00
Sonny Nickle T-Shirts (M, L, XL).....	£6.95	Eagles Bug Stickers	£0.75
		Car Stickers	£0.75
		Bookmarks.....	£0.50
		Pens	£0.50
		Key Rings.....	£0.50

Add £1.50 for postage and packing.

Postal orders to: Sheffield Eagles, 484 Penistone Road, Sheffield S6 2FU.

VIDEOS

All the Eagles Home matches will be available at £9.95. Each video includes commentary and interviews. Phone 337664 tomorrow to reserve your copy of today's game.

★ SPECIAL OFFER ★

We still have some copies of last seasons matches – reduced to £5 each – first come...

The EAGLES story on video

This video gives the story of the Eagles rise to the First Division and captures the magic moments from last seasons' Premiership Final and this seasons' top action. The first ever match against Rochdale in 1984 and the promotion clinching results against Chorley are relived – ots all there, plus much more, including interviews and commentary.

A Must For All Eagles Fans

Running time – approximately 90 minutes – Cost price £15.00 plus £1.50 p. & p.

Get up and go for quality, durability and style.

Go for the Renault 19 Hatchback, the most spacious car in its class.

Or instead, go for the Renault 19 Chamade, designed as a saloon, not as a hatchback with a boot. And you can choose from three high-tech engines.

And finally, go for 0% finance making it even easier to get up and go with Renault this summer.

GET UP AND GO% FOR THE RENAULT 19

EXCLUSIVE TO CARFOUR
3 YEARS FREE SERVICING
3 YEARS FREE WARRANTY
LIMITED PERIOD – WHILE STOCKS LAST



THE RENAULT 19 RANGE FROM £7,475*

*Delivery and number plates extra. Prices (correct at time of going to press) include VAT and Car Tax. Offers subject to credit status and apply to all new Renault 19 Hatchbacks and Chamades ordered and registered before 31st Oct 1990. (Offers do not include Channel Isles or Isle of Man) Written quotations available on request. Credit facilities provided by Renault Financial Services Ltd. NWS House, City Road, Chester X, CH99 3AN.

Carfour 4. THERE'S MORE TO LIFE WITH RENAULT
DO IT RIGHT. SAVILE STREET, SHEFFIELD (0742) 701400

Depots in Sheffield, Nottingham, Mansfield.

THE AUSSIES ARE HERE !!



AUSTRALIANS' TOUR TO GREAT BRITAIN 1990

FIRST BRITISH COAL TEST
SATURDAY OCTOBER 27 – KICK OFF 2.30 p.m.
WEMBLEY STADIUM

THE BATTLE OF THE GIANTS – RUGBY LEAGUE'S TWO SUPER POWERS come together in a historic clash, the highlight of the 13 match Kangaroos tour to Great Britain.

SEATS: £15 : £12 : £10 and £8

TICKET OFFICE: RLHQ, 180 Chapeltown Road, Leeds LS7 4HT.

CREDIT CARD ORDERS FOR VISA AND ACCESS CARD CAN BE MADE BY TELEPHONE ON 0532 - 629991. MONDAY – FRIDAY 9am - 5pm.

THE GREAT BRITAIN TEAM, PLUS SUBSTITUTES WILL BE SELECTED FROM THE FOLLOWING SQUAD.

STEVE HAMPSON (Wigan)
JOE LYDON (Wigan)
SHAUN EDWARDS (Wigan)
ANDY GREGORY (Wigan)
ANDY PLATT (Wigan)
DENIS BETTS (Wigan)
ELLERY HANLEY (Wigan)
GARY SCHOFIELD (Leeds)
CARL GIBSON (Leeds)
ROY POWELL (Leeds)

PAUL DIXON (Leeds)
JONATHON DAVIES (Widnes)
MARTIN OFFIAH (Widnes)
LEE JACKSON (Hull)
KARL HARRISON (Hull)
KEVIN WARD (St. Helens)
PAUL LAUGHLIN (St. Helens)
KARL FAIRBANK (Bradford N.)
DARYL POWELL .. (Sheffield Eagles)

THE AUSSIES ARE HERE

*They're big and strong, fine young men
Like gladiators going into the lions den.
They're fit and fast, play as a team
One or two look awful mean.
Will they cast us aside, as in the recent past
Or has Malcolm got a spell a cast.
Will our thirteen prove to be strong
I think not, but I might be wrong.
Whatever the outcome we'll be entertained
With the artistry for which they're famed.
So go and watch them, I'm sure you'll see
They're everything you expect them to be.
I for one will watch in awe
At the spectacle that's in store.*

I can't wait – join us at Wembley on October 27th.

EAGLES FAN.




68/72 LONDON ROAD, SHEFFIELD S2 4LR, Telephone 92 727310

REPORT ALLIANCE REPORT ALLIANCE REPORT ALLIANCE REPORT ALLIANCE REPORT ALLIANCE REPORT

TEAM NEWS

The Alliance team are in the middle of a month of tough games, including matches against all the other leading clubs. At present, they lie second in the league, on points difference with league leaders, Bradford Northern, having earned this place with a narrow but deserved 15-16 win over Hunslet at Dewsbury. Unfortunately, one of the young starlets, TOMMY MOORE, broke his arm in this match and is unlikely to play many more games this season.

Hit by injuries and first team calls, the Alliance team was not so successful in the Yorkshire Senior Competition Cup, losing to Bradford Northern at Odsal. One positive point in the game was NEIL KELLETT'S performance as an emergency winger and despite the disappointment of defeat, SIMON RHOADES will surely remember his 18th birthday party after the game.

Having been eliminated from the Cup, the Eagles have brought forward their game at Huddersfield to FRIDAY 19 OCTOBER 1990 (kick off 7.30pm).

FIXTURES AND RESULTS

FRI	AUG 24	BRAMLEY	H	7.30	W	45-8
THU	AUG 30	Batley	A	7.00	L	12-27
THU	SEP 6	Ryedale York	A	7.30	W	18-16
FRI	SEP 14	DONCASTER	H	7.30	W	38-10
WED	SEPT 19	BATLEY	H	7.30	W	22-16
SAT	SEP 29	Hunslet	A	2.30	W	17-16
FRI	OCT 5	Bradford N (Yorks Cup 1)	A	7.30	L	0-20
SAT	OCT 13	Swinton C	A	2.30		
SAT	OCT 20	Yorkshire Senior Competition Cup (First Round)				
FRI	NOV 2	BRADFORD	H	7.30		
SAT	NOV 10	Trafford B	A	11.30		
FRI	NOV 16	DEWSBURY	H	7.30		
THU	NOV 22	Bradford N	A	8.00		
FRI	NOV 30	TRAFFORD B	H	7.30		
SAT	DEC 8	WORKINGTON T	H	2.30		
THU	DEC 13	Bramley	A	7.30		
SAT	DEC 22	BARROW	H	2.30		
SAT	JAN 5	Dewsbury	A	2.30		
FRI	JAN 11	RYEDALE YORK	H	7.30		
FRI	JAN 18	Doncaster	A	7.30		
FRI	JAN 25	SWINTON C	H	7.30		
FRI	FEB 1	Huddersfield	A	7.30		
FRI	FEB 8	HUNSLET	H	7.30		
SAT	FEB 16	Alliance Challenge Cup (First Round)				
SAT	FEB 23	Workington T	A	2.30		
SAT	MAR 2	Alliance Challenge Cup (Second Round)				
FRI	MAR 8	HUDDERSFIELD	H	7.30		
SAT	MAR 16	Barrow	A	2.30		

All Home Matches are played at Woodbourne Road Stadium.

PLAYERS RECORDS

Name	App	Sub	Trs	Gls	Dgs	Pts
Richard Branton	3	1	1	—	—	4
Derek Bridgeman	1	2	1	—	—	4
Ray Calvert	4	1	1	—	—	4
Phil Cartwright	3	—	—	—	—	—
David Close	5	—	—	18	3	39
Andy Dickinson	1	—	—	—	—	—
Pete Dyer	4	1	1	—	—	4
Anthony Farrell	3	—	1	—	—	4
Steve Ferres	—	1	—	—	—	—
Mark Fleming	1	—	—	—	—	—
Mark Green	7	—	1	—	—	4
Nick Grimoldby	2	—	—	—	—	—
Nick Halafihi	5	—	3	—	—	12
Dean Johnson	7	—	—	—	—	—
Neil Kellett	6	—	7	—	—	28
Dale Laughton	3	2	—	—	—	—
Tommy Moore	4	2	2	—	—	8
David Nelson	1	—	—	—	—	—
Vince Nickle	2	—	1	—	—	4
Simon Paling	1	2	—	—	—	—
Richard Picklesley	3	—	—	—	—	—
Simon Rhoades	7	—	1	2	—	8
Andy Rowley	4	—	1	—	—	4
Tim Wilby	2	—	—	—	—	—
Clive Wilson	5	—	3	—	—	12
Mark Wilson	3	—	1	—	—	4
Andy Young	4	—	2	—	—	8
Trialist	—	1	—	—	—	—



11 BROOMHALL ROAD, SHEFFIELD S10 2DG.
TELEPHONE: (0742) 884807.
Body and Soul is the first gym in Sheffield to offer a comprehensive health screening free to each member.

Our qualified staff are taking steps to ensure that our health and fitness facility is the most professional in the area. Our facilities and equipment are second to none.

- ★ 2 fully equipped gyms
- ★ Sun bed
- ★ Sauna
- ★ Bar & Diner
- ★ Steam Room
- ★ Hair Studio
- ★ Jacuzzi
- ★ Creche
- ★ Fully equipped sports hall incorporating different instructed sports for people of all ages.

All this at probably the lowest prices in town, why look anywhere else?

Follow the
SHEFFIELD EAGLES
to
Sheffield's No.1
Barbershop

BOGARTS

The new Sweeney Salon
in Hillsborough

- ★ No appointments needed.
- ★ Free Coffee on request.
- ★ Helpful Friendly Staff
- ★ Open till 8pm Weekdays
Saturday 9am to 5.30pm

★★ 20% OFF WITH THIS AD ★★

Ruane & T P O'Neil

TRAINING AND EXAMINATIONS IN INSPECTION AND NON-DESTRUCTIVE TESTING

For a comprehensive training and examination service which meets all major certification needs, including the following subject areas:

- ULTRASONIC TESTING •
- INDUSTRIAL RADIOGRAPHY •
- MAGNETIC PARTICLE AND PENETRANT TESTING •
- INSPECTION, QA & APPRECIATION •
- NORTHERN TEST CENTRE (PCN, CSWIP, ASNT) •
- TECHNICAL WRITING, DESKTOP PUBLISHING, & QUALITY MANUALS •

For further information contact **Martin Dawson** or **Terry Sharman**

RUANE TECHNICAL SERVICES LTD

Psalters Lane · Rotherham
South Yorkshire · S61 1DL



Telephone: 0709 560459 · Telex: 547676 CHAMCO G · Telefax: 0709 740813

Players Sponsors

The Forest Les & Sue

Rutland Road
Sheffield 2
TEL: 729519
Hot & Cold
Lunches
Evening Meals



W. BALL & CO.
Graphic design & artwork
Fine quality letterpress &
litho colour printers.
Rotherham 364271

Champagne Entertainments

featuring the

Champagne Roadshow

Our Highly Professional Entertainment
Service is available to organise
your next function.

Contact us and leave all your worries behind
Tel: MARK STUART 0742 435516
Mobile: 0860 845643

Entertainment Organisers for the Eagles

JANET & TREVOR Miners Arms

Warren Lane
CHAPELTOWN
LUNCHTIME FOOD

Castle Eden Ale

WELCOME MEN

JEAN & JIM
HOYLAND
Nr BARNSELY
Traditional Beers
GOOD ENTERTAINMENT
Function Room Available

Jackie & Lenny

The Blake

WALKLEY

PAUL & JANET

NEW CROWN INN

Handsworth Rd
Sheffield S13
OPEN ALL DAY



THE FOX
PETER & JENNY BUCK
FOX HILL ROAD
FOX HILL
SHEFFIELD

TELEPHONE: (0742) 311346

NUSELL ENGINEERING

484 Penistone Rd
Sheffield

SHEFFIELD EAGLES SUPPORT CLUB

**ROEBUCK
BUILDING**
FOR
EXTENSIONS
STRUCTURAL REPAIRS
GENERAL MAINTENANCE
COMMERCIAL & DOMESTIC
CONTACT KEN LOCKWOOD ON
SHEFFIELD 682124

John & Tina noahs ark

94 Crookes, Sheffield.
Telephone: 663300
Food Served From
12 p.m. - 2 p.m. 5.30 p.m. - 7.30 p.m.
Monday - Saturday inclusive



W. BALL & CO.
Graphic design & artwork
Fine quality letterpress &
litho colour printers.
Rotherham 364271



W. BALL & CO.
Graphic design & artwork
Fine quality letterpress &
litho colour printers.
Rotherham 364271



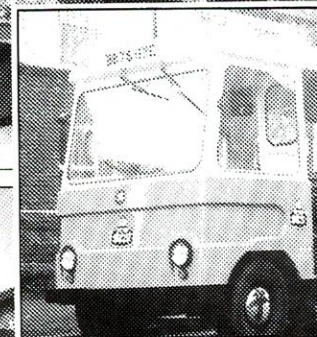
SHEFFIELD CO-OPERATIVE SOCIETY LIMITED

One of Sheffield's
largest independent
retailers with a
turnover for the year
ended January 1990 of
£48.58 million.

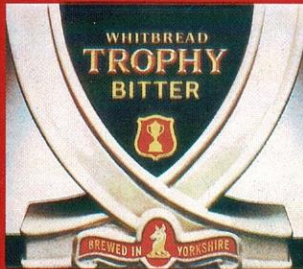
- Over 30 stores in the City including Castle House Department Store, a new 43,000 sq.ft. Superstore Development at Middlewood Road, and 9 Pricefighter Supermarkets.

- The only productive Dairy in the City supplying milk and other dairy products to both domestic and business outlets.

- The largest Funeral Director in the City with 3 funeral homes including the prestigious headquarters at Suffolk Road.



Sheffield Co-operative Society Ltd Angel Street, Sheffield.
CASTLE HOUSE Telephone: 768841



**Yorkshire
Windows**

**FOR
WINDOWS
DOORS
PATIO DOORS
CONSERVATORIES**

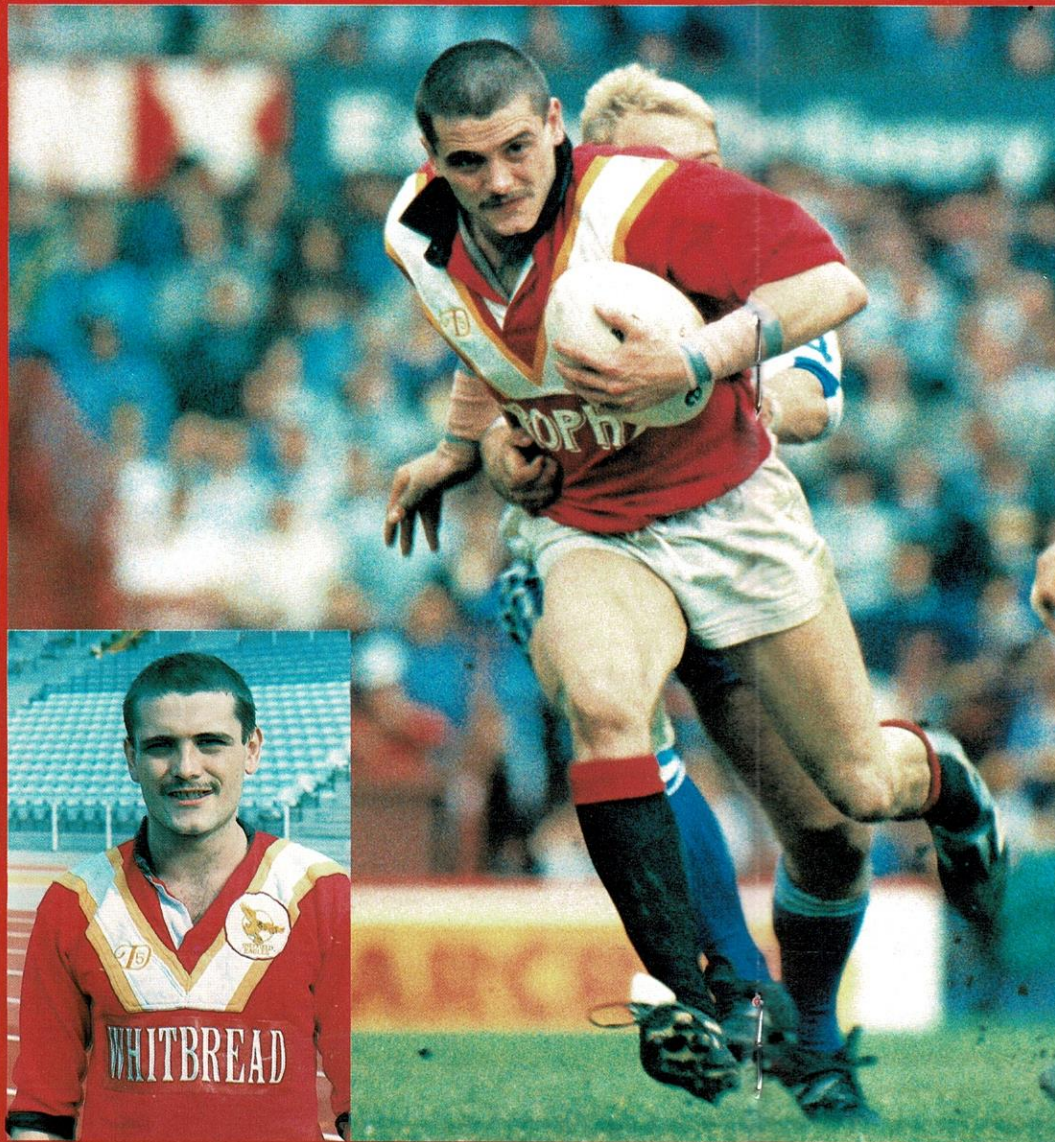
**Rotherham 540982.
Sheffield 740000.**

**AVAILABLE IN uPVC
and ALUMINIUM**

**SHEFFIELD SHOWROOM
304 MEADOWHEAD
SHEFFIELD**



A member of the
Glass & Glazing
Federation



MARK GAMSON

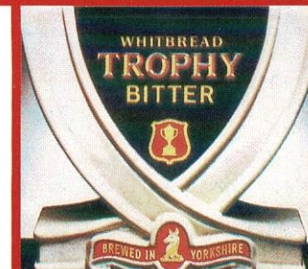
Mark Edward Gamson was born at Seacroft in Leeds in the year of our Lord 17.8.65. His parents Leonard and Winnie have been heard to say that Marks first words were not the usual Mammy and Daddy, but "give us a Cig". It was then they knew he was to be a special child.

Mark started his distinguished RL career with Drighlington U9s. Being the runt of the litter Mark played scrum half. He progressed to St. Francis Catholic School where the Catholic teachings were to have effect on his language. At 16 Mark was already playing Open age for Drighlington before being spotted by TALENT SCOUTS of Leeds RLFC who took him to the Mecca of RL Headingley, where Mark played for the Colts side.

1984 Mark became the 2nd Sheffield player to sign and was also the 2nd highest fee payed by Sheffield boss Gary Hetherington. Comments made by an observer of the Gamson career at the time were that there is plenty of room for development.

Mark now lives in a TOWN HOUSE in the VILLAGE of Birstall with his beloved Colette who think's he's a BIT OF A LADIES MAN? Mark is knowledgeable on POP MUSIC, he knows all the names of the drummers of Led Keppelin, Mark likes to relax to the subtle tones of Helen Reddy, UB 40, and Elvis who I also think has influenced his dress, I think he has borrowed a pair of his idols Winkle Picker shoes.

GAMMA (as he has been christened by his team mates, he prefers to be known as Bullet Head, chosen by himself) likes to travel to Exotic locations of Florida and France to pursue the sophisticated pastimes of Cards, Darts, Dominoes and Pool. He likes to relax with a drink of Stella or a "BLOODY MARY". This could be by his Catholic upbringing. Gammas' favourite meal is a "late night" snack at a Curry house after an evening with his favourite drink. He has a liking for Chocolates, not fruit bonbons as Nick Halafi found out much to his surprise, when the author of this biography had the pleasure of travelling in Gamma's sponsored Sheffield vehicle with stereo and luxury seating, affectionately known as the BOG BEAST, which he uses to transport his Leeds based Sheffield team mates to training. Gamma has not had too many disappointments of his career. The only one being Sheffield's defeat by Bridgend, the only game Bridgend won that year. He has fond memories of Old Trafford and of promotion to the 1st division, where so far this season Gamma is rapidly becoming the NEARLY MAN, after NEARLY scoring tries against Bradford, 2 against Wigan and NEARLY scoring against Rochdale. We all hope Mark Nearly Gamma Bullet Head Gamson scores today.



INDEPENDENT ADVICE ON

**All forms of life Assurance,
Personal and Corporate
Pensions, Savings and
Investment Policies
together with our**

MORTGAGE DESK

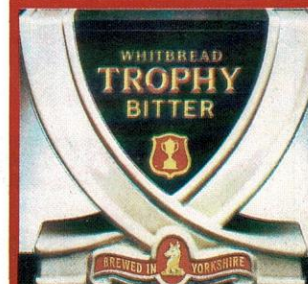
**We can arrange Domestic
and Commercial Mortgages
at competitive interest
rates linked to an insurance
or pension related
repayment method**



**RAWMHILL
BROKERS LTD
(Financial Services)**

Policy House
52 Bellhouse Road
Sheffield S5 6HN

Telephone:
(0742) 425555



The Greatest name in sport through five generations

SUGG SPORT

Telephone: SHEFFIELD 723334
Sheffield, Stockport, Huddersfield, Bradford, Barnsley,
Doncaster, Rotherham & Chesterfield

STOCKISTS OF EAGLES REPLICA KIT

The
Ruane
Technical
Press
Ltd.

Design · Publication · Bureau · Technical Writing
Graphic Design & Artwork, Quality Manuals and Written Practices,
Instruction Books, Guides, Newsletters, Sales Literature.

Desktop Publishing Training and Hire

Aldus PageMaker and Postscript Printer



PSALTERS LANE, ROTHERHAM, S61 1DL

Telephone: (0709) 560459



ASK FOR TERRY SHARMAN or TONY GREGORY



CLUBCALL

THE OFFICIAL VOICE OF THE EAGLES
CLUBCALL 0898 12 15 31

SOME OF THE PEOPLE WE'VE BEEN TALKING TO ON YOUR CLUBCALL. OVER THE LAST TWO WEEKS. DARYL POWELL – HUGH WADDELL – TIM WILBY – MARK ASTON – SONNY NICKLE – FRANCIS LEOTA – ERIC FITZSIMONS – GARY HETHERINGTON AND CLUBCALL SUMMERISER – KEVIN ASHCROFT.

"I wasn't happy with one or two of the referee's decisions at Post Office Road, but having said that, we didn't play well." (Daryl Powell)

(Hugh Waddell talking about Great Britain) – "I think my GB days are over they seem to want second row forwards to play prop these days. Although I think I'm playing as well as I did when I played for GB."

"We've got a great stadium, hopefully we can put up some more performances like the one against Wakefield and get some big crowds." (Tim Wilby)

"It shows we have a lot more strength in depth, when already this season we have used three scrum halves to good effect." (Mark Aston)

"We have only got ourselves to blame for last week, we were rubbish." (Sonny Nickle)

"It was very frustrating having to watch our two games at the Don Valley. I'm really looking forward to playing here." (Francis Leota)

"We fear no one, as was shown on the opening day of the season, but we must stop throwing games away, every point is vital." (Gary Hetherington)

"I have every admiration for Gary and Kath, they have worked wonders in such a short space of time, let's hope for the sake of them, Sheffield and Rugby League as a whole, the progress continues." (Kevin Ashcroft, Clubcall Summeriser).

THE OFFICIAL VOICE OF THE EAGLES: 0898 – 12 – 15 – 31: FOR MATCH REPORTS, HOME AND AWAY "LIVE" AS IT HAPPENS. NEWS, VIEWS AND INTERVIEWS, RIGHT HERE ON 0898 – 12 – 15 – 31.

EVERY CALL BENEFITS THE CLUB – CALLS CHARGED AT 33p/min. OFF PEAK AND 44p/min PEAK.



STONES BITTER CHAMPIONSHIP – FIRST DIVISION

	P	W	D	L	F	A	Diff	Pts
Hull	5	5	0	0	130	64	+66	10
Widnes	5	4	0	1	131	76	+55	8
Leeds	5	3	0	2	110	82	+28	6
Wakefield Trinity	4	3	0	1	83	64	+19	6
Warrington	5	3	0	2	100	81	+19	6
Sheffield Eagles	5	2	1	2	116	89	+27	5
Wigan	5	2	1	2	114	93	+21	5
Hull KR	5	2	1	2	84	113	-29	5
St Helens	4	2	0	2	84	73	+11	4
Oldham	5	2	0	3	113	113	0	4
Bradford Northern	5	2	0	3	99	113	-14	4
Featherstone Rovers	5	1	1	3	96	127	-31	3
Castleford	5	1	0	4	80	161	-81	2
Rochdale Hornets	5	0	0	5	55	146	-91	0

WIN WITH
THE EAGLES
in The Star every night

GATHERCOTE GARDENING SERVICES

PROFESSIONAL LANDSCAPE, CONTRACT & MAINTENANCE GARDENERS

WE SPECIALISE IN COMMERCIAL & PRIVATE GROUNDS MAINTENANCE THROUGHOUT THE NORTH & MIDLANDS

CONTACT REX GRIMOLDBY IN SHEFFIELD
0742 – 875880

MANSFIELD ROAD, ASTON, SHEFFIELD S31 0BS.

A.A. BRAMALL LTD.

HERRIES ROAD SOUTH, SHEFFIELD S6 1QG.
TEL: 0742 348219

CASH BUYERS OF NON FERROUS METALS

ALSO AT:
32 DONISTHORPE STREET,
HUNSLET, LEEDS.
TEL: 0532 432125

FIVE-D-TOGS LTD



Highly professional outfits like SHEFFIELD EAGLES need a highly professional outfitters like 5-D-Togs to help them look good everytime they take the field.

Your team could look just as good - talk to us about your new Rugby kit, now!

Five-D-Togs Ltd, (rear of) Manchester House,
Church Street East, Pinxton, Notts, NG16 6JN. Tel: Ripley 812158



The best shopping in Europe on your doorstep

This impressive concept—in shopping terms ranking alongside Britain's top 10 cities—has been carefully created to offer you a variety of shopping in a mall that's easy and relaxing to explore. You'll find a mix that will delight you, with five themed areas that are a pleasure to be in, an entertainment in themselves, an experience, above all, not to be missed!

Meadowhall is easy to get to, however you travel, by bus, rail, coach or car. It's the best shopping in Europe, but with the British sense of value and good service.

It's here. Near you. Now.



Europe's finest Shopping Mall
Sheffield, Junction 34 alongside the M1



ACKNOWLEDGEMENT TO PAST SPONSORS



EAGLES -v- WARRINGTON

From left to right: Mr. Dil Scrivens of Tinsley Wire (Big Match Sponsor); Jenny and Ben Carey of MFH Group Ltd. (Associate Match Sponsor), Gary Hetherington, Sonny Nickle (Player of Match) and Mr. Peter Herreaman of G.E.I. (Match Ball Sponsor).

RC

Russell & Creswick solicitors

Russell Creswick are a long established firm of Solicitors offering a modern approach to legal problems.

The Partners are supported by qualified assistants, legal executives, clerks and fully trained secretarial staff and a complete computerised backup including Telex and Facsimile systems.

OUR SERVICES INCLUDE:

House Sales & Purchases • Matrimonial & Family Law • Company, Commercial Matters • Commercial Conveyancing & Leasing • Commercial Litigation • Magistrates Court & Road Traffic Matters • Licensing • Wills & Deceaseds Estates • Employment

Initial Consultation - Free

620 Attercliffe Road, Sheffield S9 3QS. Tel: (0742) 561560 Fax: (0742) 433951

SHEAF SPORTS TROPHIES



BRINGING
TROPHIES
INTO THE 90's

655 STANFORTH ROAD
SHEFFIELD S9 4RD

TEL: (0742) 449032

ALBANY PHYSIOTHERAPY AND SPORTS INJURY CLINIC

PERSONAL SERVICE FROM
EDWARD WHITE MC SP SRP
CHARTERED AND STATE REGISTERED
PHYSIOTHERAPIST

2 Albany Road, Nether Edge,
Sheffield S7 1DP
Telephone: 0742 561335

Appointments 8.30am - 5.30pm
Mon - Fri

**GET ON THE
BALL WITH
A GREAT DEAL
FROM BICKERTON**



**SKODA
FAVORIT**

FROM ONLY

£4997



Model illustrated top of the range Favorit 136LS £6,049. Prices correct at time of going to press and include delivery charges, number plates, petrol and six months road fund licence.

**23.26%
APR**

**Bickerton
GARAGE**

0742 701971

39/45 Infirmay Rd
Sheffield S6 3BX

**ANY MAKE
OF VEHICLE
ANY MODEL
ANY NUMBER**

**THERE'S ONLY
ONE NUMBER
TO BUZZ FOR
ALL YOUR
MOTORING NEEDS**

0742 701111

39/45 Infirmay Rd
Sheffield S6 3BX

BICKERTON



FLEET SERVICES



Back Row: (left to right) Gary Hetherington: David Nelson: Tim Wilby: Andrew Young: Hugh Waddell: Paul Broadbent: Nick Grimoldby
Sommy Nickle: Mick Cook: Steve Ferris.
Front Row: Howard Cartwright: Ian Russell: Mark Aston: Daryl Powell (captain): Andy Dickinson: Mark Ganson: David Mycoe:
Richard Picklesley: Eric Fitzsimons.

LEAGUE Express

The new Sheffield International Stadium is a new landmark in the city and an important landmark also in the life of Sheffield Eagles. The contrast between the present situation, where the Eagles are a genuine first division club based at a stadium which is the envy of both rugby league and soccer clubs, and the situation of just six years ago, where a newly-founded club was billeted out at a speedway track that had seen better days, could hardly be greater.

All this is due to the vision and managerial expertise of Gary Hetherington, backed by his hard-working staff and volunteers. Few outside rugby league administration (and some in it) could have a real appreciation of how much work and perseverance can have gone into this most recent achievement.

And yet not all the comments following the opening game which saw the Eagles despatch Wakefield Trinity were complimentary. "Too big" and "too far away" seemed to be the complaints of the hard-to-please. Who do they think is going to come along these days and build a stadium of this calibre solely for rugby league? And doesn't the game, which is a paragon of the modern sporting spectacle, demand an appropriately modern setting? You only have to look at the newly-published Stones Bitter Directory of Rugby League, which features photographs of every rugby league ground, to realise the sorry state that many of our grounds (though purpose-built in their day) are in. Are there really so many people who want to stand out in all the weather that the British climate can throw at them, just so that they can be closer to what's happening? There will be some, but they won't be in the majority.

What is a greater shame, however, is that this magnificent new stadium could not have hosted a match involving the Australian tourists, so that the whole game of rugby league could have benefitted. The time and the place would have been so right. But you can bet now that so much will have happened in the next four years that the 1994 Kangaroos will have added another milestone to the Eagles' brief but eventful history.

MIKE RYLANCE, Editor of League Express.

PLAYERS RECORDS

1990/91 SEASON

Apps	Subs	Trs	Gls	Dgs	Pts
3	-	3	8	-	28
6	-	1	-	-	4
-	-	-	-	-	-
6	-	-	-	-	-
2	-	-	9	-	18
3	-	1	-	-	4
1	4	-	-	-	-
-	-	-	-	-	-
6	-	2	-	-	8
3	-	-	-	-	-
1	-	-	-	-	-
-	3	1	-	-	4
1	-	-	-	-	-
6	-	-	7	-	14
6	-	2	-	-	8
6	-	4	-	-	16
3	-	1	-	-	4
3	-	-	-	-	-
6	-	3	-	-	12
5	-	1	-	-	4
6	-	-	-	-	-
2	3	-	-	-	-
3	1	1	-	-	4

TOTAL FOR EAGLES

Player	Apps	Subs	Trs	Gls	Dgs	Pts
M. ASTON	113	2	17	263	18	612
P. BROADBENT	69	8	7	-	-	28
P. CARTWRIGHT	24	5	6	-	-	24
M. COOK	93	3	10	-	-	40
D. CLOSE	63	7	16	35	6	140
A. DICKINSON	126	2	57	-	-	228
A. FARRELL	9	8	-	-	-	-
M. FLEMING	27	4	3	-	1	13
M. GAMSON	175	7	40	-	-	160
N. GRIMOLDY	33	11	6	-	-	24
N. HALAFIHI	9	12	3	-	-	12
N. KELLETT	36	32	18	-	-	72
F. LEOTA	12	-	1	-	-	4
D. MYCOE	29	6	8	7	-	46
D. NELSON	87	3	26	-	-	104
S. NICKLE	40	4	17	-	-	68
S. PANAPA	16	1	8	-	-	32
R. PICKSLEY	10	-	3	-	-	12
D. POWELL	189	1	78	-	8	320
I. RUSSELL	5	-	1	-	-	4
H. WADDELL	11	-	-	-	-	-
T. WILBY	2	3	-	-	-	-
A. YOUNG	56	13	20	-	-	80

SPORTSCAST

Sportscast is the new Satellite TV Service exclusive to pubs and clubs

Re-live today's Eagles game against Oldham in full at THE OWL in Sheffield tomorrow at 8 pm

This Thursday at 7.50 pm See a unique 8 bout boxing bill LIVE from Dewsbury Sports Centre

For more details on Sportscast programmes - Call

0839 - 444421

Calls charged at 33p per minute off peak and 44p per minute at other times.

TOMORROW SHEFFIELD EAGLES

-v- OLDHAM 8 pm

Thursday 18th October BOXING Adam Foggerty

-v-

Paul Lister

Official British Heavyweight Eliminator

LIVE!!! from 7.50 pm

at

THE OWL, Neapsend Lane, Sheffield.

Tel: 0742 - 728520

BRITISH AEROSPACE COMMUNICATIONS



LEAGUE Express

ALL THE RUGBY LEAGUE ACTION EVERY MONDAY

On sale at Newsagents & Eagles Office:

DEVELOPMENT UPDATE

SHEFFIELD & DISTRICT AMATEUR RUGBY LEAGUE DEVELOPMENT ASSOCIATION

TODAYS CURTAIN RAISER

WHITBREADS TOUCH RUGBY LEAGUE 1990

FINALS



2.00 pm Losers Shield **Noahs Ark (Crookes) -v- Freedom House (Walkley)**
2.35 pm Cup Final **Fox Inn (Foxhill) -v- Wellington Inn (Shalesmoor)**
3.10 pm Presentation of the trophies to the competing teams by Mr. Mike Smith of Whitbread Yorkshire and Mr. John Cornwell, Chairman of SADARLDA.

Today's finals are the climax of a whole summer of enjoyable Rugby League in Hillsborough Park sponsored by Whitbread Yorkshire.

Seventeen teams have played regularly giving many people a chance to enjoy a non-contact form of the sport whatever their experience.

The game is played by 6-a-side teams with 3 subs for three 10 minute periods. Six points for a try between the central cones, 4 points outside these.

This game is FAST, but is a great way of spending a summers evening.

Good luck to all today's teams and welcome to all non-qualifying teams who are attending today's match as guests of Sheffield Eagles and Whitbread Yorkshire.



Last years Touch Rugby League Cup Winners, Wellington, going for a second successive final victory today.

DEVELOPMENT UPDATE

WOMEN

Sheffield Eagles Ladies are finding the competition pretty tough in Division Two of the Womens Amateur Rugby League, and have crashed to defeats at home to Wigan (36-6) and away to Fulham (40-4). They are currently suffering from a plague of injuries and would love to hear from potential new players. Please telephone Tim Butcher on Sheffield 337664.

JUNIORS

Playing opportunities exist for youngsters of all ages and if you would like to play Rugby League outside your school contact :-

Dodworth (Under 11s)

Geoff Wake - 0226-790661

Dearne (Under 11s)

Ian Stead - 0709-894902

Eagles Juniors (U9s, 11s, 13s, 15s, 17s)

Sharon Skelding - 0709-523803

Stocksbridge (Under 11s)

Barry Minshall - 0742-745831

Hoyland (U11s)

Ian Nicholls - 0226-745831

Sheffield Schools (U11, 13, 14, 16)

Tim Butcher - 0742-337664

Rotherham Schools (U14, 16)

Stuart Sheard - 0709-373394

Barnsley Schools (U11, 13, 14, 16)

Steve Creek - 0226-744220

SENIORS

Plenty of amateur Rugby League is being played locally and if you want to know more please telephone Tim Butcher - 0742-337664.

An interesting possibility of amateur Rugby League at Maltby has arisen and if you are interested in either playing or helping out telephone Harry Brooke on 0709-814824

Half-time today - U9s Mini League match between Eagles Juniors and Stocksbridge.

A collection will be made in the stands at half time in aid of the two clubs.

SCHOOLS

The Sheffield Schools' Rugby League Association has recently been formed to offer youngsters in Sheffield the opportunity to play rugby league at both school and representative levels. There are U11/U12/U13/U14 and U16 Sheffield teams, the enthusiastic approach of all concerned is ensuring rapid improvements in the standards of play.

Today's ball boys are from City school which was one of the first schools in Sheffield to play rugby league. City in fact started rugby league 2 years after the Eagles came to Sheffield, when A. N. Other was the most selected member of the team. With the coaching by SADARLDA staff and Eagles players, the game has taken hold at the school so much so that many are playing outside school with the Junior Eagles and the Sheffield teams. City school will compete this season at all levels and its teams are expected to do well. Thanks to Tim Butcher, Gamel Kassim, 'Plastic' Powell and 'Tubby' Aston and not forgetting the contribution of Peter 'the intellectual' Hitch. [Love Peter Tingle xxx PE Dept. City School]

Sheffield & District Inter-Schools Competitions begin this week with leagues operating at U14, U15 and U16 year groups with nine schools in all :-

Oakwood (Rotherham)	Yewlands
Ridgewood (Doncaster)	City
High Storrs	Ecclesfield
All Saints	Myrtle Springs
Newfields	

We wish them all the best of luck and look forward to some excellent football in the coming months. There is no doubt that the standard of play is improving thanks to the many hours of development work in local schools.

**British
COAL**
RUGBY LEAGUE
TEST SERIES

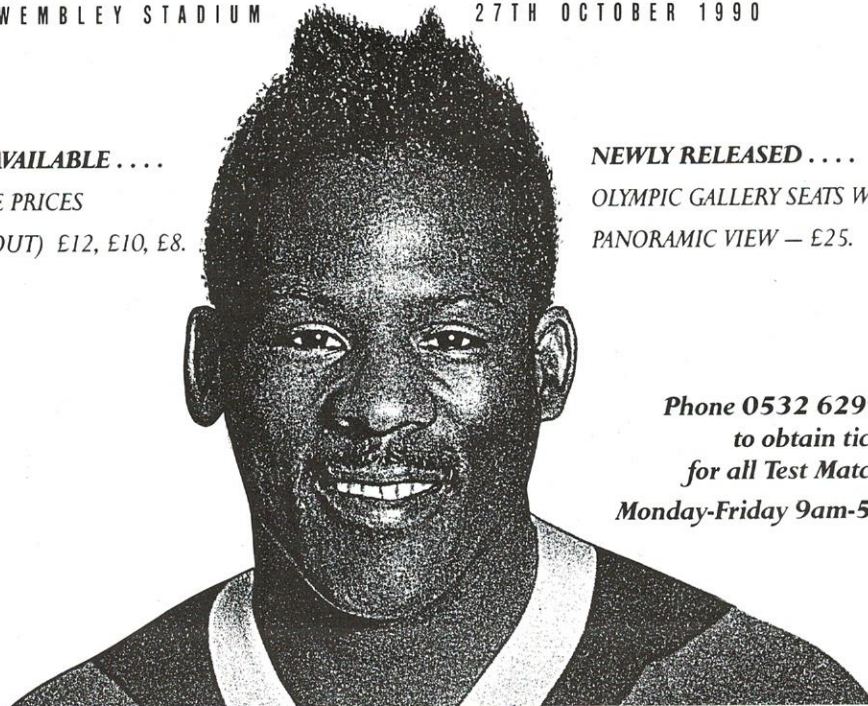


**British
COAL**
RUGBY LEAGUE
TEST SERIES

HEAD TO HEAD

GREAT BRITAIN ^v AUSTRALIA
WEMBLEY STADIUM 27TH OCTOBER 1990

SEATS NOW AVAILABLE
SPECIAL VALUE PRICES
(£15 - SOLD OUT) £12, £10, £8.



NEWLY RELEASED
OLYMPIC GALLERY SEATS WITH
PANORAMIC VIEW - £25.

Phone 0532 629991
to obtain tickets
for all Test Matches.
Monday-Friday 9am-5pm.

FLASHBACK

FIVE YEARS AGO

DIVISION TWO (HT: 6-2)

BRAMLEY 13 SHEFFIELD EAGLES 10

Team: Dave Cholmondley; Mark Gamson; (Mark O. Campbell, 57 mins); Andy Dickinson; Daryl Powell; Roy Rafferty; Steve Lane; Paul Welsh; Billy Harris; Gary Hetherington; Kevin Farrell; (Steve Redfern 72 mins); Derek Bridgeman; John Glancy; Paul McDermott.

Scorers: Try - Farrell. Goals - Rafferty (3)

Eagles had only themselves to blame for this defeat, having more than enough chances to win. They had the better of the game territorially thanks to strong forward work from Hetherington, Farrell, Glancy and McDermott. Rafferty opened the scoring with a penalty, but Bramley struck a bad blow before half time when hooker Kelly supported Carroll and Mason three minutes before the interval.

Rafferty added another penalty shortly after the break but chances were lost when Rafferty failed to accept the final pass with the home line wide open and then Glancy, still masquerading as A. N. Other, finished strongly, only to be recalled for a forward pass.

Eventually, the Bramley defence did crack, Glancy making the break for the supporting Farrell and the Eagles seemed to be on their way to victory. But five minutes later, the defence failed to cover a chip to the line and Lister snatched an opportunist try. Kilner's conversion put Bramley ahead and Box added a late drop goal to complete the scoring.

Coach, Alan Rhodes put it simply: "When you create chances like we did and don't make them count you can't expect to win. But we deserved something out of it".

CLIFF LYONS

PAST PLAYER - CLIFF LYONS

Debut -v- Batley (Home) 23 November 1986.

PLAYING RECORD

Season 1986/87 App. 6 Trs. 3 Gls. 3 Pts. 18
Disciplinary Record: Sent Off - 0 Sin Bin - 0

The signing of Cliff Lyons in the autumn of 1986 was a tremendous slice of luck for the Eagles. Lyons' Australian club, Manly-Warringah were anxious that he should work off a suspension, imposed for a sending off in the Sea-Eagles last game of the season, so that he could start the 1987 season with a clean sheet. Consequently, the price was right.

He arrived on the eve of the First Test against the Australians at Old Trafford and spent the first month cooling his heels in the four match suspension. Anxious for a game, he made a brilliant start to his brief Eagles career in masterminding a 24-4 win over Batley, putting Steve Parkes in for a try in the second minute and scoring himself a quarter of an hour later.

Cliff took over the goal kicking role during the game after Roy Rafferty had been injured early on, but that was the only match in which he was successful with the boot. A week later, in the John Player Trophy, his goal kicking was abysmal as he kept Bramley in the game, missing two conversion attempts, including one directly under the posts. When Craig Miller scored in the last minute, Paul Kuhnemann took over the goal kicking duties.

In the second round match against Barrow, Cliff's competitiveness was all too apparent when referee Fred Lindop disallowed a try, ruling Lyons to have been held, even though he appeared to have broken free of a would-be tackler. Eagles led 8-0 after 25 minutes and could have been further ahead, but first division Barrow recovered to win 14-8.

Cliff played in three more games, with mixed fortunes. A try at York helped the Eagles to a 28-18 success, but the following week, although the Eagles scored three tries to Workington's two, Lowden's boot saw the Cumbrians to a 28-16 victory. Incidentally this match saw two Eagles' landmarks, Mark Aston's first goals for the club and Daryl Powell's only appearance as a substitute.

Lyons' last game for the Eagles was at Alfreton against Mansfield Marksman, a few days after Christmas, scoring a try and leading the Eagles to a 26-10 success. He returned to Australia to marry before resuming training for the 1987 Australian season, which ended with Manly as Premiers and Cliff winning the Clive Churchill Medal as Man of the Match, clearly as a result of his experiences in England.

1990 saw Cliff, holder of the prestigious Daily Mail Player of the Year Award as a Kangaroo for the first time. We all wish him, but not his team, well for the tour.

PAST PLAYER...



FIXTURES: RESULTS AND SPONSORS

Date	Opponents	Veune	K.O.	Result	Big Match Sponsor	Associate Sponsor
Sun Aug 19	Bradford N (Yorks Cup Prelim)	A	3.00	12-20		
Sun Sept 9	Wigan	A	3.00	18-18		
Sun Sept 16	Rochdale H	A	3.00	24-20		
WED SEPT 26	WAKEFIELD T	H	8.00	34-6	MEADOWHALL	WHITBREAD
SUN SEPT 30	WARRINGTON	H	3.15	20-22	TINSLEY WIRE	MFH
Sun Oct 7	Featherstone R	A	3.30	22-25		
SUN OCT 14	OLDHAM	H	3.15		PRIMESTOCK	SYT
Sun Oct 21	Hull	A	3.00			
TUE OCT 30	BRADFORD N	H	7.30		CREDIT COLLECTIONS	WHITBREAD
Sun Nov 11	St Helens	A	3.00			
SUN NOV 18	LEEDS	H	3.15		POPPLETON & APPLEBY	BICKERTON GARAGE
Sun Nov 25	Warrington	A	3.00			
Sun Dec 2	Regal Trophy					
Sun Dec 9	Regal Trophy					
SUN DEC 16	ST HELENS	H	3.15		SHEFFIELD CO-OP SOC	IRWIN MITCHELL
Wed Dec 26	Hull KR	A	3.00			
SUN JAN 6	WIGAN	H	3.15		POPPLETON & APPLEBY	EGI
Sun Jan 13	Leeds	A	3.00			
SUN JAN 20	ROCHDALE	H	3.15		SCOTTISH WIDOWS	
Sun Jan 27	Bradford N	A	3.00			
SUN FEB 3	FEATHERSTONE R	H	3.15		GLOSTAL	SHEFFIELD ALUMINIUM WDWS
Sun Feb 10	Silk Cut					
Sun Feb 17	Wakefield T	A	3.30			
Sun Feb 24	Silk Cut					
Sun Mar 3	Widnes	A	3.15			
SUN MAR 10	CASTLEFORD	H	3.15		YEB	
Sun Mar 17	Oldham	A	3.00			
SUN MAR 24	HULL	H	3.15			FAST FINANCE
SUN MAR 31	HULL KR	H	3.15			
SUN APR 7	WIDNES	H	3.15		CONSTANT SECURITY	
Sun Apr 14	Castleford	A	3.30			



PASUDA
SERVICES LIMITED
INSTANT ACCOMMODATION

Mangham Way,
 Barbot Hall Industrial Estate,
 Rotherham S61 4RL

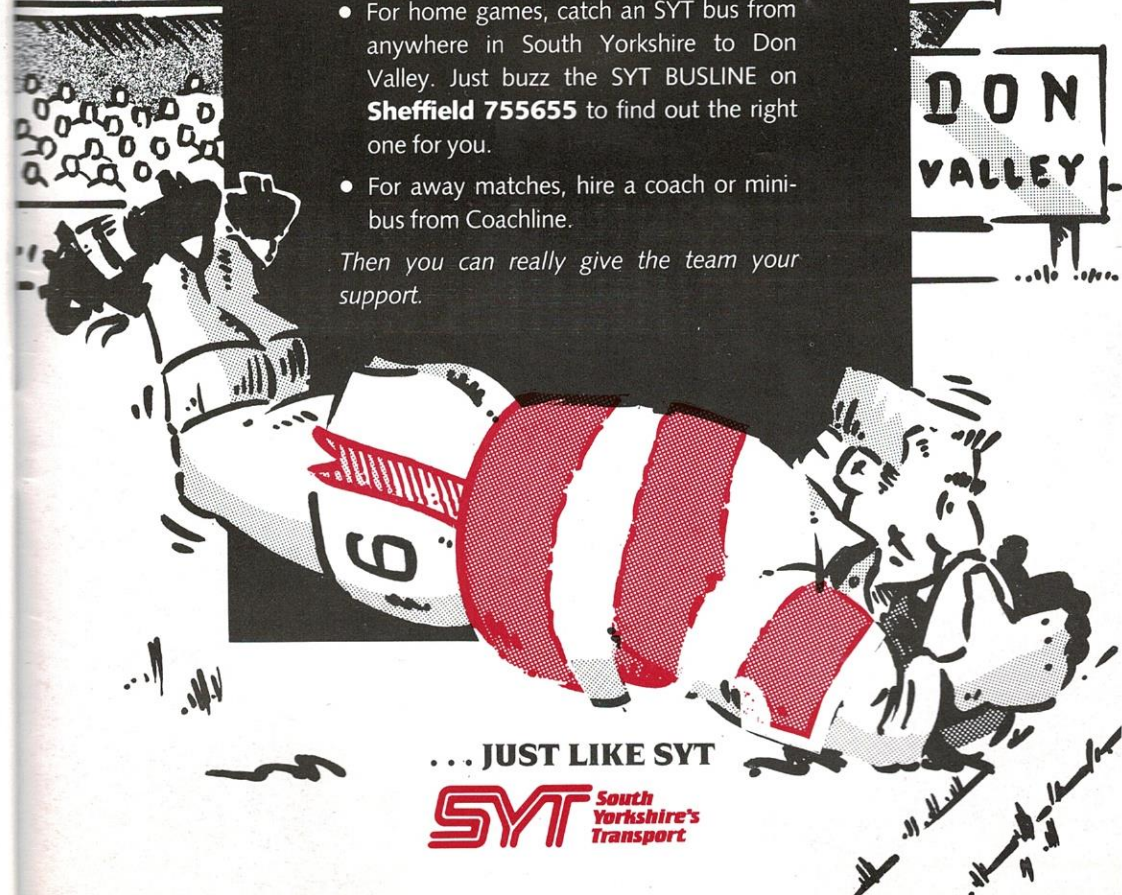
Tel:(0709)373778 & 369345 Fax:(0709)360167

**NOW THE EAGLES
 HAVE LANDED
 THEY'LL REALLY BE
 GOING PLACES**

At last! The Sheffield Eagles have a home of their own. And thanks to SYT you don't have to miss a match.

- For home games, catch an SYT bus from anywhere in South Yorkshire to Don Valley. Just buzz the SYT BUSLINE on **Sheffield 755655** to find out the right one for you.
- For away matches, hire a coach or mini-bus from Coachline.

Then you can really give the team your support.



... JUST LIKE SYT

SYT South Yorkshire's Transport