

**OLDHAM RLFC
WOULDN'T GIVE A**



**FOR ANYTHING
ELSE.**

Brewed under licence in the U.K.

CASTLEMAINE
XXXX

Oldham

RUGBY LEAGUE FOOTBALL CLUB P.L.C.



TODAY'S SPONSORS

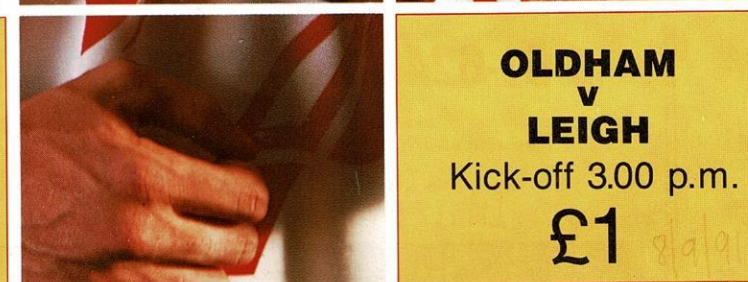
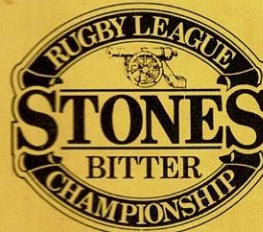
CLUB SPONSOR:
CASTLEMAINE XXXX

MATCH SPONSOR:
SETON HEALTH CARE GROUP
P.L.C.

MAN-OF-MATCH SPONSOR:
DRONSFIELD COMMERCIAL
VEHICLES

TEAM SPONSOR:
BROADBENT GROUP OF
COMPANIES

TOP TACKLE SPONSOR:
HIGH POINT HOTEL



**OLDHAM
v
LEIGH**
Kick-off 3.00 p.m.
£1

OFFICIAL MATCHDAY PROGRAMME

WE WOULD LIKE TO EXTEND OUR THANKS TO
TODAY'S SPONSORS

CLUB SPONSOR:
CASTLEMAINE XXXX

MATCH SPONSOR:
SETON HEALTH CARE GROUP P.L.C.

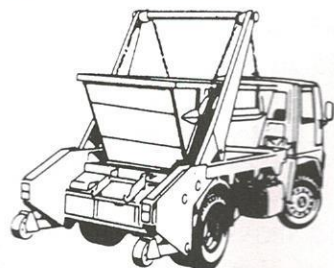
MAN-OF-MATCH SPONSOR:
DRONSFIELD COMMERCIAL VEHICLES

TEAM SPONSOR:
BROADBENT GROUP OF COMPANIES

TOP TACKLE SPONSOR:
HIGH POINT HOTEL

**HOLROYD
Skip Hire Ltd.**

**DIGGER & TRACKED
MACHINE HIRE**



**YOUR FIRST CHOICE IN
WASTE REMOVAL**

TELEPHONE:

061-624 1118 OR 061-624 1311

EVENINGS/FAX:

061-624 1171

LITTLE END FARM, MOORSIDE, OLDHAM.

Oldham Rugby League Football Club

THE PAVILION · WATERSHEDDINGS · OLDHAM

Telephone: 061-652 5244 and 061-624 4865

Chief Executive:
Ian Carr

Directors:
John Chadwick (Chairman),
David Gardner, Tom Patterson,
Jim Quinn, Mike Winterbottom, Ian Carr

General Manager: Mr. R. Hill

Hon. Doctors: Dr. I. Crook,
Dr. D. Atherton

Dental Surgeon: Mr. N. Gibbison

Physiotherapists: Mr. N. Hodgson,
Mr. A. Bonnelle (Adviser)

Assistant Physiotherapist:
Mr. J. Watkins

Hon. Secretary: Mr. F. Howarth, B.A.

Coach: Peter Tunks

Assistant Coach: Eric Fitzsimons

'A' Team Coach: Paddy Kirwan

Youth Development Officer:
Iain McCorquodale

Hon. Consultant

Orthopaedic Surgeons:

Mr. H. Thompson, Mr. D. Walker

Official Timekeeper: Mr. J. Roscoe

Professional Playing Staff:

S. Allen, K. Atkinson, T. F. Barrow, P. Barrow,
D. Bate, I. Bates, R. Blackman, D. Bradbury,
G. Burns, G. Christie, J. Cogger, T. Conroy,
A. Donegan, C. Eckersley, J. Fieldhouse,
N. Flanagan, D. Foy, N. Francis, J. Green,
J. Henderson, N. Holding, P. Hourigan,
G. Hyde, R. Irving, C. Joynt, A. Leech,
S. Longstaff, P. Lord, C. McAlister,
B. McDermott, T. L. Martyn, J. Maxwell,
P. Mitchell, C. Mort, K. Newton, V. Nicklin,
R. Pachniuk, A. Philips, D. Pitts, D. Platt,
S. Robinson, D. Rogers, P. Round, R. Russell,
I. Sanderson, T. Street, S. M. Warburton.

CLUB RECORDS

Record Victory: 67-6 v Liverpool City, April, 1959

Record Defeat: 11-67 by Hull K.R., September,
1978

Record Attendance: 28,000 v Huddersfield,
24 February, 1912

Record Receipts: £37,505.50 v Wigan,
5th October, 1989

Record Transfer Fee Paid: £70,000 to
Halifax for Tony Anderson March 1990

Record Try Scorer: Reg Farrar, 49 tries,
1921-22 season

Record Goal Scorer: Bernard Ganley,
224 goals, 1957-58 season

Record Point Scorer: Bernard Ganley, 28 points
v Liverpool City, April 1959

First Game: 21st October, 1876 v Stalybridge

Highest number of points scored: Bernard
Ganley, 2,881

Most Appearances: Joe Ferguson, 685

Most Tries: Pre 1900, Jack Hirst, 233
Since 1900, Alan Davies, 182

CLUB HONOURS

Rugby League
Championship Play-off Winners:
1909-10, 1910-11, 1956-57

Runners-up:
1906-07, 1907-08, 1908-09, 1921-22, 1954-55

First Division Champions:
1904-05

Second Division Champions:
1963-64, 1981-82, 1987-88

Rugby League Challenge Cup Winners:
1898-99,
1924-25, 1926-27

Runners-up:
1906-07, 1911-12, 1923-24, 1925-26

Lancashire Cup Winners:
1907-08, 1910-11, 1913-14, 1919-20, 1924-25,
1933-34, 1956-57, 1957-58, 1958-59

Runners-up:
1908-09, 1911-12, 1918-19, 1921-22, 1954-55,
1966-67, 1968-69, 1986-87, 1989-90

Lancashire Championship Winners:
1907-08,
1909-10, 1921-22, 1956-57, 1957-58

Runners-up:
1908-09, 1910-11, 1911-12, 1919-20, 1923-24,
1954-55

Lancashire Shield Winners:
1975-76, 1979-80

Colts Premiership Trophy:
1979-80

Second Division Premiership:
1987-88, 1989-90

Wigan Sevens:
1991-92

Healthier. Fitter.

Seton Healthcare Group plc, an established and growing force in the healthcare, sport and leisure markets, has an outstanding track record.

A policy of continual reinvestment and acquisition to develop and expand the product portfolio has ensured healthy sustained and profitable growth, making the Group fitter than ever for the challenges of the future.

 **Seton
Healthcare Group plc**

SETON HEALTHCARE GROUP plc, TUBITON HOUSE, OLDHAM OL1 3HS, ENGLAND.
TELEPHONE: 061-652 2222. TELEX: 669956 (SETON G). FAX: 061-626 9090



THE OLD MILL
Restaurant
Rock Street, Oldham
Telephone 061-620 0788
(Behind Coliseum Theatre)

**CHRISTMAS
PARTY MENU**

NOW AVAILABLE

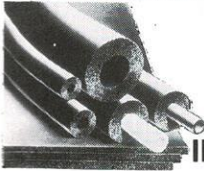
4 COURSES £14.50
inclusive

Large or small parties
welcome — please ring for
Menu & Booking Form

- ★ Good Food ★
- ★ Delightful Surroundings ★
- ★ Come and Try us ★
- ★ you won't be disappointed ★

2


Armstrong
Armaflex & tubolit



**CFC
FREE
FLEXIBLE
INSULATION**

*Manufactured in Oldham to the
highest standards by
ARMSTRONG —
the world's largest manufacturers
of flexible pipe insulation*

**ARMSTRONG WORLD
INDUSTRIES LIMITED**
MARS STREET, OLDHAM
LANCASHIRE

 B.S. 5750:PART 2. REGISTRATION No. Q. 5967



Tunks' Talkback

Oldham's
Coach
gives you his views

A good start to the season. We went to the bookies favourites for the Second Division Championship on the first day of the season and picked up a point — and we should have had two.

It was an encouraging start to the season and I was pleased with the way the team performed on the field. We have seen a few areas where we can improve and we have been working extra hard in training this week to improve.

I thought Sheffield played well but I know Oldham can play a lot better. Hopefully we will see the improvement against Leigh for our first home match of the season.

As well as the impressive start against Sheffield, I was also pleased with the 'A' Team victory against Bradford. The 'A' team is the breeding ground for the players who are the future of the club.

I was delighted with the youth programme in operation when I took over as coach, and am just as pleased to be able to continue it this season. At the time of writing we are on the verge of signing Paul Hourigan, one of Great Britain's under .19 team's most exciting prospects.

Attracting players of Paul's calibre is vital if an ambitious club like Oldham is to thrive. Our youth policy is extremely healthy and bodes well for the future.

I am also looking at further additions to the squad. A strong squad is essential and everyone involved in coaching is deeply committed to ensuring we are able to maintain and improve upon the good start to the season.

CASHLINE HOTLINE
061-620 4870

3



Skipper's Spot

Oldham Captain Paul Round looks at today's game

I would like to take this opportunity, as your newly elected Captain, to welcome both old and new faces to the club; the 'new' faces of my fellow colleagues and coach Peter tunks, and a welcome return to the fold of Eric Fitzsimons. Congratulations to Paddy Kirwan on his new appointment as A-Team coach — what an encouraging start to the season they had!

Despite our magnificent display against Hull in our 'top-flight' match in April, fate decreed our relegation — which must have laid heavy on every 'Roughyed' heart. However, our future decrees we do not dwell on the past — as confidence is all important at the start of the new season.

Our pre-season trip to France culminated in more than the expected outcome of increased fitness, stamina and match experience for the younger players. It proved to be a great educational experience for them — they came out battered and bruised but with a more mature outlook on the foibles of the game.

At the end of a long, hard, hot, tiring, bruising but encouraging ten days — I can safely state that team spirit, morale, confidence and maturity are high and will remain so throughout the coming months.

Following our 'opener' at Don Valley last week, today is our first home game. As all you dedicated 'Roughyeds' will remember, we remained undefeated at Watersheddings in our last run in the second division. We will be looking to a similar feat in the coming season. And so, a parting thought from me to you —

"We all know that there is no success like failure; and that failure is no success at all!"

Paul Round

OLDHAM RUGBY

keep their socks up with

OLDHAM ELASTIC

We are happy to continue our support of the Oldham team.

THE OLDHAM ELASTIC MANUFACTURING CO. LTD.

Onward Mill
Redgrave Street
Oldham OL4 2DZ



Tel: 061-620 0411
Fax: 061-627 0094

OLDHAM R.L. SOCIAL CLUB SHEDDINGS

Tel: 061-624 0368



- FUNCTION ROOM always available
- FREE to O.R.L.F.C. shareholders
- Ring for details ●

OLDHAM GREYHOUND STADIUM

Open Tuesday, Thursday and Saturday nights, also Sunday morning for Time Trials

BAR & CAFE FACILITIES ALWAYS AVAILABLE

WE'VE CURED HEADACHES FOR THE ROUGHYEDS



Manufacturers of upholstery fillings for over a century, Platt & Hill make foam and fibre fillings of the highest quality right here in Oldham.

So reliable are our products, that Oldham RLFC have selected them to cushion the uprights of their goal posts.

In a way, you see, we've prevented headaches all round!

PLATT & HILL
FOAM AND FIBRE FILLINGS

FIBRE FILLINGS DIVISION:
Belgrave Mill, Keswick Avenue,
Oldham, Lancs OL8 2LZ.
Tel: 061-626 4638. Telex: 669550.
Fax: 061-627 3265.

A Watersheddings welcome to . . . Leigh

Paul Topping. An outstanding signing from Swinton in the summer of 1990, scoring 18 tries and kicking 75 goals in his first season at Hilton Park. Celebrated his appointment as club captain with two tries against York in the opening league game of this campaign.

Mike Round. Lively and elusive winger signed from Wigan ARL circles over four years ago. A fine opportunist and crowd pleaser.

Simon Booth. Former Leigh miners centre who made a big impression in his first professional season in 1990/91. Rated as a fine prospect for the future.

Ian Jeffrey. One of the most consistent centres in the game, the former Lancashire RU stand-off has scored 63 tries in 145 appearances since signing from Liverpool-St. Helens RU in December 1986.

Neil McCulloch. Making a welcome return to first-team action following a serious knee injury. Signed from Leigh Miners in 1986 following a successful BARLA tour down-under, the determined winger earned a Lancashire cap early in his professional career.

David Ruane. Former Widnes stand-off who celebrated his 100th Leigh appearance with his 59th and 60th tries for the club against York last Sunday. Now re-united with brother Andy.

Jason Donohue. Highly promising scrum-half signed from local club Golborne in 1989. Has taken over from Bob Beardmore and looks set for a regular place this season.

Mark Sheals. Capped an outstanding first season with Leigh by walking away with the Player of the Year Award. The former Swinton and Chorley prop forward is rated as an international prospect of the not too distant future.

Craig Rodgers. Former Wigan St. Pats stand-off looking to secure a regular first-team place after four seasons with Wigan, he joined Leigh recently.

Barry Ledger. Now in his fourth season with Leigh after leaving home town St. Helens where his try-scoring feats from the wing earned him GB honours. has scored 55 tries in 74 games for Leigh.

John Woods. Club record points scorer with 2,272 spread over 316 games since his Leigh debut in 1976. The former GB star has been one of the game's outstanding middle backs. He played for Bradford, Warrington and Rochdale after leaving Hilton Park in 1985, re-joined Leigh last summer. Only three players in RL history (Neil Fox, Jim Sullivan and Gus Risman) have scored more points in a career than Woods' tally of 3,765.

Phil Johnson. Long serving half-back now enjoying a well deserved benefit year after giving his home town club loyal service since signing from the Colts in 1981.

Kevin Johnson. Younger brother of Phil, the livewire winger made his Leigh debut at Doncaster last season and signed pro. forms recently.

Tony Cotrell. The only player-chairman in the RL, a hero in the town after his rescue package stopped the club going out of existence in the summer. A former BARLA international forward who made his Leigh debut on New Year's Day in 1984 and has since made over 200 appearances.

Andy Ruane. Back at Watersheddings only a few weeks after joining Leigh for a nominal fee, the former Widnes and Rochdale hooker made a superb debut against York last Sunday.

Ian Potter. One of the game's most durable and consistent forwards for over a decade, the former Warrington and Wigan star re-joined Leigh for a second spell in 1989. A Great Britain international whose experience will prove invaluable this season.

Jim Moore. An Australian utility player who joined Leigh recently after playing in Papua New Guinea. Made an impressive debut against York in the second-row though is also in contention for a spot at the centre.

Andy Collier. Close season signing from Wigan and likely to fill the loose-forward position today. The former Wigan St. Pats product has created a headache for reporters and statisticians by having the same name as Leigh's second-row forward.

David Hill. Former Blackbrook amateur who has been a regular member of the first-team panel in the last two seasons playing at full-back or in the three-quarters.

Adrian Earner. Determined, hard working forward who has fought back bravely from injury to earn a first-team place, he joined Leigh from St. Helens in 1988.

Basil Ake. Talented Kiwi centre from Auckland who has played previously in this country for Bradford and York. The former Junior All Black RU international spent the summer playing for Auckland side Te Atatu.

A family business that
looks after your
family's needs . . .

BEE FAMILY FINANCE

If you require credit for

- Household Goods ● Carpet
- Furniture ● TVs ● Car Repairs, etc.

JUST CALL IN AT THE BEE
FOR FRIENDLY ADVICE

- We can also arrange credit facilities for leading fashion shops in Oldham and Manchester

061-624 9908

21 Retiro Street, Oldham

- WRITTEN DETAILS ON REQUEST ●

MARIO'S PIZZERIA & TRATTORIA

125-129
Yorkshire Street
Oldham

Telephone:
061-624 6923

Opening Times:
Sunday 5 p.m. to 10 p.m.
Tuesday to Saturday noon to 2 p.m.
6 p.m. to 11.30 p.m.
Closed all day Monday
Open Bank Holiday Mondays 5 p.m. to 10 p.m.



MIDAS SPORTS

NEW MARKET HALL
OLDHAM Tel: 061-678 6199

UNIT 6, WARRINGTON STREET
ASHTON-UNDER-LYNE. Tel: 061-344 0550

No. 1 FOR RUGBY LEAGUE IN YOUR AREA

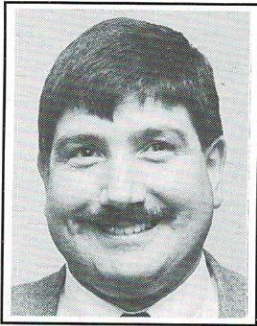
- Official Suppliers of OLDHAM R.L.F.C. REPLICAS KITS ●

FOR THE PLAYER: Shoulder Pads, Headguards, Forearm Protectors, Boots and Mouthshields.

FOR THE SUPPORTER: Replica Shirts including Wigan, Widnes, Scarborough Pirates, Castleford, Leeds, St. Helens, Salford, Hull, Bradford Northern, New Zealand, Gt. Britain and Australia, plus SYDNEY LEAGUE SHIRTS — Canberra, Penrith, Easts, Balmain, Brisbane, Paramatta and Canterbury.

FOR THE CLUBS: Team Kits at competitive prices from ELLGREN, HALBRO & MATCHWINNER.

WE ALSO STOCK A WIDE RANGE OF FOOTWEAR, CLOTHING & SPORTS EQUIPMENT
— CALL IN AND SEE US NOW!



Hill's Highlights

Commercial Manager Ray Hill reports on the Watersheddings Scene

A new season, a new league and a new challenge! This coming campaign promises to be one to remember with a new, tougher second division.

To help us with the new challenge I'd like to officially welcome the club's new official sponsors, Castlemaine XXXX, who recently signed a three year contract with the club. We're looking forward to a long and fruitful relationship with Castlemaine.

Castlemaine's distinctive logo will be featured on our new 'designer' strip. Castlemaine have got a whole host of exciting events and initiatives planned for the coming season and we'll be letting you know exactly what's happening in future editions of your match day programme.

Talking of new kits, replicas should now be available in the Souvenir Shop. Priced at a mere £34.99, they represent great value for money. Sizes are small, medium, large and extra large. Why not call in at the Shop after today's match and keep up with the changing fashions at Oldham RLFC.

Although Castlemaine are the official club sponsors, there are still plenty of superb sponsorship opportunities at Watersheddings. No matter what your requirements we have a package that is suitable for you.

If you're interested in sponsorship give me a call on 061-620 4870. I am always pleased to hear from sponsors, Past, present and future!

There have also been plenty of changes within the playing staff during the summer with several players leaving the club. On behalf of the club I'd like to thank Trevor Croston (who has joined Salford), Andy Ruane (Leigh), Paul Lord and Norman Francis (Doncaster), Brett Clark and Ronnie Duane (Rochdale), Mike Ford (Castleford), John Fairbank and Neil Clawson (Swinton) and John Cogger, who is going back home to Australia. All these players have performed admirably for the club, helping us to win through to two Silk Cut Challenge Cup semi-finals.

At the same time, I'd like to welcome newcomers Vince Nicklin, Tim Street and Neil Holding. I am sure they will quickly settle in to the Watersheddings scene and will soon have everyone buzzing.

I know I am looking forward to the start of the season and trust there will be plenty to celebrate at the end of the campaign. Enjoy your rugby.

WIN A SUPERB TRIP TO LONDON WITH ORLFC

Discover the glamour and excitement of England's capital with an unforgettable weekend stay in the grand old city by simply collecting your match day programmes.

It's true.

You can win a superb weekend in London courtesy of your match day programme and Bob Soper Travel, Henshaw Street. Vouchers will be appearing in the next six match day programmes. With each voucher there will be an easy to answer Rugby League question. All you need to do is collect all six vouchers and answer the questions. We'll tell you how to enter at a later date.

Look out for the competition in the next edition of your match day programme.

SCORE A GREAT DEAL AT RICHARD CORT

RICHARD CORT
(OLDHAM) LTD

ROVER



OPEN 7 DAYS

COPSTERHILL ROAD, OLDHAM
(061) 633 1661





Prize Structure for the coming season

Rugby League's first-ever Third Division Championships will share in a record 13-1-side prize structure of £145,000 for the Stones Bitter Championship and Premiership competitions.

The Stones Bitter Champions will receive £45,000, the Second Division title holders £22,000 and the inaugural Third Division winners £10,000.

In the Premiership tournaments, the Premiership victors will be presented with a prize cheque for £17,500 while the winners of the Divisional Premiership — contested by clubs from Second and third Divisions — will receive £9,500.

Bob Ashby, chairman of the Rugby Football League, said: "The 1991-92 Stones Bitter Championship programme is a landmark in the history of the game with the introduction of a Third Division, the birth of Scarborough Pirates and the offer of record Rugby League prizes under the Stones Bitter banner."

Stones Bitter are also continuing their support of the Man of Steel Award scheme featuring cash prizes and silver mementoes to the 1992 Stones Bitter Man of Steel — the personality judged to have made the most impact on the season — the First Division, Second Division and Third Division Players of the Year; Young Player, Coach and Referee of the Year.

The Stones Bitter Team of the Month will again receive £500 for the First Division, £350 for the Second Division and a new award of £250 for the Third Division. The Stones Bitter team of the Year will be presented with £1,500.

Rugby on the Box

Rugby League will again receive coverage on five television stations during the 1991-92 season.

BBC, BSKyB, Granada, Yorkshire and British Aerospace will screen a



total of 135 matches during the nine month campaign.

BBC will again be covering the Regal Trophy and the Silk Cut Challenge Cup from the first round onwards, plus the Stones Bitter Premiership Final and the Great Britain v Papua New Guinea British Coal Test.

BSkyB will be covering the Stones Bitter Championship on their Sunday evening live programme, matches being staged at the new kick-off time of 6.15pm.

On the ITV scene, Granada Television's live Saturday afternoon programme will resume at the end of the year, Yorkshire Television's Scrumdown series commencing at the start of November on the traditional Sunday late night highlight format.

New Rules for 1991-92

The following rules changes have been introduced from the start of the 1991-92 season.

Substitutions

(a) **NORMAL SUBSTITUTION:** When a player is substituted for tactical reasons, the substitution is only made when the ball is out of play or play is stopped because of injury, the replacement being sanctioned by the referee.

(b) **INJURY SUBSTITUTION:** When an injured player has left the field, his substitute can take the field immediately, with the permission of the Touch Judge, in an on-side position.

(c) **BLOOD BIN SUBSTITUTION:** When a player is bleeding profusely, the referee must stop play, a doctor or physiotherapist taking the player off for attention with the referee indicating the use of the Blood Bin by holding aloft a white card featuring a red cross. The player receiving treatment can be replaced by a temporary substitute who does not count in the quota of permitted four substitutions, however, if the injured player does not return within 10 minutes then this substitution becomes permanent, counting on the substitution quota. The departure and return of an injured player involved in the Blood Bin will be indicated by a club official displaying a white card featuring a red cross.

If, while a player is in the Blood Bin, his temporary replacement is sent off, the original player will return from the Blood Bin but will not be allowed to re-enter the field, he will join the substitute bench and should he eventually rejoin play as a replacement his substitution will not count on the quota of four permitted substitutions. Where the temporary replacement for a Blood Bin player is sent to the sin bin, the Blood Bin player will not return until that 10-minute period has been served, the sin bin player returning to the substitute bench.

Stealing the Ball

It is **ILLEGAL** to steal the ball in a tackle. If the ball is stolen in the tackle over the goal line penalty try will be awarded.

Sin Bin

All Sin Bin dismissals will last 10 minutes, indicated by the display of the yellow card.

Heading the Ball

The practice of heading the ball forward is illegal.

PICCADILLY GOLD 1152 AM

Follow Rugby League on Piccadilly Gold 1152AM.

Piccadilly's award winning team brings you the top stories through-out the season.

Mid-week and weekends, rugby league's featured in all sports desks on 1152AM.

COMMENTARY..... INTERVIEWS..... REPORTS AND ANALYSIS.

The most comprehensive coverage of the game in the North West.....
Tune your dial to 1152AM.....Piccadilly Gold-First for RUGBY LEAGUE

PICCADILLY RADIO LTD, 127/131 PICCADILLY PIAZZA, PICCADILLY PLAZA, MANCHESTER M1 4AW
TELEPHONE: 061-236 9913. FAX: 061-228 1503. ADVERTISING: 061-954 9000

THE EDGE RESTAURANT

Shaw Street (behind Bluecoat School), Oldham OL1 3RR. Telephone: 061-626-4444

Lunch

Monday to Friday
12 noon to 2p.m. (last orders)

TYPICAL MENU
Soup of the Day or
Fan of Melon or
Pink Grapefruit

Roast Beef or
Roast Chicken or
Grilled Halibut
with
Sweet
Tea or Coffee

£5.95

Evenings

Monday to Thursday
6.30p.m. to 9.30p.m.
(last orders)

Friday and Saturday
6.30p.m. to 10.30p.m.
(last orders)

An extensive
A LA CARTE MENU
is available
with such dishes as
LOBSTER THERMIDOR
at £10.50
and A LA CARTE DESSERTS
at £3.50

Sunday Lunch

TRADITIONAL
ROAST SUNDAY LUNCH
or
FISH
or
VEGETARIAN DISH
if preferred

Served from
12 noon to 2.30p.m.
(last orders)

£6.95

Children up to 10
£3.50

● **PRIVATE PARTIES, WEDDINGS and any** ●
SPECIAL OCCASION catered for —
Just ring **SANDIE or DARRELL** on **061-626 4444** for details

SPOTLIGHT ON VINCE NICKLIN



Oldham's newest import, Vince Nicklin, has taken an unorthodox route to Watersheddings to help lead the club's fight back into the top flight.

Vince, who signed a 12 month contract with Oldham during the summer, was born in New Zealand, moved to Darwin, Australia, when he was six, went to Sydney to play Rugby League professionally at 19 and was most recently playing for Limoux in the South of France. Previous clubs for the 23-year-old include St. George and Eastern Suburbs.

He describes himself as a utility player filling the full-back or centre positions.

"I'll play loose forward if I have to," says the young New Zealander, who has quickly settled into life in Lancashire.

"Oldham is a nice town, with warm, friendly people. I am looking forward to the challenge of winning their support."

After the South of France, Vince may find the Oldham weather slightly different.

"I've heard a few stories that it gets pretty cool during the winter but obviously I'll find out for myself later. Anyway, if it gets too cold I'll just wrap up with two coats!"

One thing is for certain, Vince is looking forward to unwrapping his talents for Oldham fans, starting with today's game against Leigh.

DUE TO PRINTING DEADLINES WE
ARE UNABLE TO INCLUDE THE
PLAYERS' SPONSORS' PAGE IN
TODAY'S PROGRAMME

IT WILL APPEAR IN THE NEXT
MATCH DAY PROGRAMME

No. 1
for
local
NEWS
and
SPORT

LITTLEMOOR MILL CARPETS

Littlemoor Lane, Oldham
(off Ripponden Road)

FITTED CARPET SPECIALISTS

Fitted by experts within 7 days

Ring for
FREE QUOTATION

061-620 9866

Our BED CENTRE always has a big range in stock — call in and see

J. W. MINTON & Co.

CHARTERED
ACCOUNTANTS

95 High Street, Lees
Oldham OL4 4LY

59 Market Street, Shaw
Oldham OL2 8NP

Telephone: 061-626 4297
or 061-626 4274

MIKE BURKE

TRAINING SERVICES

R.T.I.T.B.
H.G.V., F.L.T.

CARS and
INSTRUCTOR TRAINING

Telephone: 061-682 7800
or 061-681 0664

Jo~Jo's

Opening hours:
Thursday-Saturday
9p.m. to 2a.m.

Strictly
over-21s

Smart
dress



Rochdale Road, Royton, Oldham. ☎ 061-665 1683

TEAM CHECK

SUNDAY, SEPTEMBER 8th, 1991

OLDHAM

Team Changes

- 1 VINCE NICKLIN
- 2 STEVE ROBINSON
- 3 STEVE WARBURTON
- 4 CHARLIE McALISTER
- 5 RICHARD IRVING
- 6 TOMMY MARTYN
- 7 NEIL HOLDING
- 8 AUSTIN DONEGAN
- 9 RICHARD RUSSELL
- 10 TIM STREET
- 11 PAUL ROUND
- 12 SHAWN ALLEN
- 13 SIMON LONGSTAFF
- 14 KEITH NEWTON
- 15 BARRY McDERMOTT

LEIGH

Team Changes

- 1 PAUL TOPPING
- 2 MIKE ROUND
- 3 SIMON BOOTH
- 4 IAN JEFFREY
- 5 NEIL McCULLOCH
- 6 DAVID RUANE
- 7 JASON DONOHUE
- 8 MARK SHEALS
- 9 ANDY RUANE
- 10 IAN POTTER
- 11 JAMES MOORE
- 12 ANDY COLLIER
- 13 ADREW COLLIER
- 14 T.B.A.
- 15 T.B.A.

PENALTIES				
1	2	3	4	5
6	7	8	9	10
11	12	13	14	15
16	17	18	19	20

SCRUMS				
1	2	3	4	5
6	7	8	9	10
11	12	13	14	15
16	17	18	19	20

Referee:
Mr. B. Galtress (Bradford)

Touch Judges:
Mr. S. Lawrence (Red Flag)
Mr. S. B. Golden (Orange Flag)

PENALTIES				
1	2	3	4	5
6	7	8	9	10
11	12	13	14	15
16	17	18	19	20

SCRUMS				
1	2	3	4	5
6	7	8	9	10
11	12	13	14	15
16	17	18	19	20

Programme printed by Hirst, Kidd & Rennie Ltd. Oldham OL1 1EQ, Tel: 061-633 2121

Photographs courtesy of Oldham Evening Chronicle

ROUGH'YEDS

become

SMART'YEDS

at

HEADHUNTERS

PROFESSIONAL HAIRDRESSING

138-140 Ashton Road, Oldham

Tel: 061-624 2984

also at

Moston and Bolton

OPEN
6
DAYS



"Monty's"

NIGHT CLUB

OLDHAM'S
FOREMOST
FREEHOUSE

Meals always available

17/21 Mumps, Oldham

Tel: 061-620 9566

OGDEN & PARTINGTON

CERTIFIED ACCOUNTANTS

D. J. TAYLOR, F.C.C.A.
15 Queen Street
Oldham OL1 1RD

Telephone: 061-624 1177

SERVICE MOULDINGS LIMITED

Agents for

CHEN HSONG MACHINERY

County End, Lees, Oldham

Tel: 061-652 0441

J. W. BUCKLEY LTD.

Established 1912

THE SQUARE
UPPERMILL, SADDLEWORTH
OLDHAM

Tel: 0457 872175

Craftsmen, Bakers & Confectioners
TOP TIER CAKE DEPARTMENT
OUTSIDE CATERING

OPEN: Monday to Saturday
and also Sunday afternoon

also at 2 New Street, Uppermill

Telephone: 0457 872858



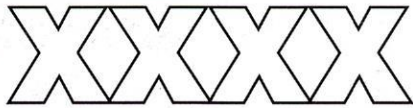
TOWNFIELD SERVICE STATION

Huddersfield Road, Oldham

Telephone: 061-624 9387

- USED MERCEDES SPECIALISTS
- M.o.T. TESTING — 6 days a week
- SERVICING & REPAIRS to all makes of cars

CASTLEMAINE



Charlie McAlister with the lovely Miss Oldham Rugby, Amanda Norris, seen with Malcolm Nicholls, Marketing Director of Tetley Walker Limited

Castlemaine XXXX is delighted to be the new sponsor of Oldham Rugby League Football Club. This exciting sponsorship gives us an ideal opportunity to build stronger links between the North West's most exciting lager and the region's most exciting sport.

Castlemaine XXXX's sponsorship of the Australian tour last Autumn gave us a high profile in the British rugby league, complementing the strong association between the game and XXXX in Australia, and we're looking forward to an equally successful partnership with Oldham RLFC.

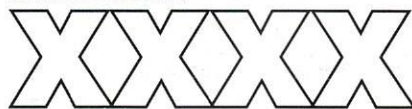
Good news too for visitors to the club house. Not only Castlemaine XXXX, but also a full range of Tetley beers are now available at the bar.

Here's to an excellent season for Oldham and hopefully one which will see the club return to a well-earned position in the first division. Whatever the result one thing is certain - Oldham Rugby League Football Club wouldn't give a XXXX for any other lager!

Malcolm Nicholls.

Marketing Director, Tetley Walker Limited.

CASTLEMAINE



For all your in-house company catering, contact

KEN BOUSTEAD at

HEYSIDE CATERING

- See our extensive range of HOT OR COLD MENUS
- HOSTESS SERVICE AVAILABLE

Tel: 0706 843782

or

Fax: 0706 843782

LAWRENCE PERRINS & SONS LTD

Plumbers, Electricians & Heating Engineers

Domestic & Industrial Installations

176 Oldham Road
Springhead
Near Oldham

Telephone:
061-624 1723 & 3798

DAVID GARDNER
TRADE 'N' SAVE

27-31 Oldham Road
New Cross
Manchester

Telephone:
061-839 0110

The North-West's
leading
Trade Centre

See our range of cars...

ALL SOLD AT COST PLUS
£499 HANDLING CHARGE

OPEN 7 DAYS

PAN GULF



BUILDING DEVELOPERS & CONTRACTORS

WE EXTEND OUR SUPPORT
AND BEST WISHES
FOR A SUCCESSFUL SEASON

V.I.P. CENTRE
VULCAN STREET, OLDHAM

TEL: 061-
624
7774

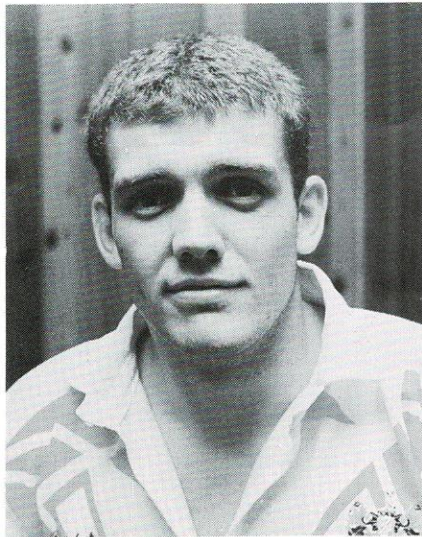


FAX: 061-
652
0718

SIX OF THE BEST



Recent signings (from left to right): Gary Burns, Gary Christie, David Bradbury, Abraham Phillip, Barrie McDermott.

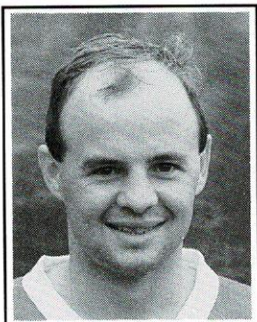


NO LONGER AMATEURS!

Paul Hourigan, who captained Great Britain Under-19s on the New Zealand tour in June and July.

Opponents	Date	KO	Res	F/A	Att	Pos	1	2	3	4	5	6	7	8	9	10	11	12	13	14	15	
Sheffield E	1.9.91	A	3.15																			
Leigh	8.9.91	H	3.00																			
Workington T	22.9.91	A	3.00																			
Rochdale H	29.9.91	H	3.00																			
Fulham	6.10.91	A	3.00																			
Ryedale York	13.10.91	H	3.00																			
Carlisle	20.10.91	A	2.00																			
Sheffield E	27.10.91	H	3.00																			
Leigh	3.11.91	A	3.30																			
Workington T	10.11.91	H	3.00																			
Regal Trophy - Round 1	17.11.91																					
Regal Trophy - Round 2	24.11.91																					
Rochdale H	1.12.91	A	3.00																			
Fulham	8.12.91	H	3.00																			
Ryedale York	15.12.91	A	3.15																			
Rochdale H	26.12.91	H	3.00																			
Leigh	1.1.92	A	3.30																			
Carlisle	5.1.92	H	3.00																			
Sheffield E	12.1.92	H	3.00																			
SCC - Round 1	26.1.92																					
Workington T	2.2.92	A	3.00																			
SCC - Round 2	9.2.92																					
Fulham	16.2.92	A	3.00																			
Ryedale York	23.2.92	A	3.00																			
SCC - Round 3	23.2.92																					
Sheffield E	1.3.92	A	3.15																			
Carlisle	8.3.92	H	3.00																			
Fulham	15.3.92	H	3.00																			
Carlisle	29.3.92	A	2.00																			
Workington T	5.4.92	H	3.00																			
Ryedale York	12.4.92	A	3.15																			
Rochdale H	17.4.92	A	3.00																			
Leigh	20.4.92	H	3.00																			

Key: t = try g = goal dg = drop goal * = played as substitute



Paddy's View

by
A-Team
Coach
Paddy Kirwan

Slalom Lager Alliance Fixtures 1991/92

Date	Opponents	Venue	Res	F	A
Aug 30	Bradford Northern		H		
Sept 6	Castleford		A		
13	Warrington		H		
21	Workington Town (2.30)		H		
27	Halifax		A		
Oct 5	Hemel Hempstead (Shield)		A		
11	Widnes		H		
19	Shield — Round 2				
24	Bradford Northern		A		
Nov 1	Featherstone Rovers		H		
9	Workington Town (2.30)		A		
15	Leeds		A		
22	St. Helens		H		
29	Hull KR		A		
Dec 6	Wakefield Trinity		A		
13	Castleford		H		
20	Wigan		A		
27	St. Helens		A		
Jan 3	Hull KR		H		
10	Warrington		A		
17	Halifax		H		
24	Widnes		A		
31	Challenge Cup				
Feb 7	Hull		H		
14	Challenge Cup — Round 2				
21	Featherstone Rovers		A		
28	Wigan		H		
Mar 6	Hull		A		
13	Leeds		H		
20	Wakefield Trinity		H		

Kick-off 7.30 unless stated

It was a pleasant surprise when Peter Tunks asked me to take charge of the 'A' Team at the beginning of August — however it was a shock to my system to learn that he wanted a full-time coach.

To give up playing was a very difficult decision. However, the opportunity to make the transition from player to coach with the club that has been a large part of my life as supporter, player and now coach was too tempting to turn down.

The quality of the 'A' Team which I played with for much of last season supplemented by potential of the quality youngster signed during the close of season also proved a great attraction to taking on the coaching role.

Last season the 'A' Team played some excellent rugby, having a good Cup run, and achieving fourth position in the First Division of the Alliance League. This year the aim is to improve on that performance and bring some silverware back to Watersheddings.

A winning 'A' Team is not, however, my primary objective. I see the first priority as preparing the players so that they are ready to win a first team place on merit as soon as possible. In that respect I can already see several players who will be pushing for places in the coming weeks.

In our first game against a strong Bradford Northern team the lads gave a very impressive performance, winning 24-14 to give me a flying start. I was very pleased with the attitude and commitment of the whole team; however, the pack — heavily outweighed — and half-backs deserve a special mention.

SKIDMORE'S CYCLES

37 Union Street, Oldham
(near Star Inn)

☎ 061-624 5912

FOR AN EARLY MORNING
DELIVERY SERVICE OF
MILK & DAIRY PRODUCE

We have gotta lotta bottle

COUNTHILL DAIRY

The Dairy on your doorstep

TELEPHONE: 633 3911

REGENT STREET
OLDHAM

*The Dairy that's proud
of it's Service*

**WRIGLEY CLAYDON
& ARMSTRONGS**

SOLICITORS



COMPLETE LEGAL AND FINANCIAL SERVICE

OUR LEGAL SERVICES INCLUDE:

- Company and Commercial Work
- Full Debt Recovery Service
- Accident and Compensation Claims
- Civil and Criminal Litigation
- Wills and Probate
- Conveyancing
- Divorce

INDEPENDENT FINANCIAL SERVICES INCLUDE:

- The arrangement of Commercial and Residential Mortgages
- Retirement and Tax Planning
- Keyman Assurance
- Management Buy-out Finance
- Development Finance
- Computerised Quotations available

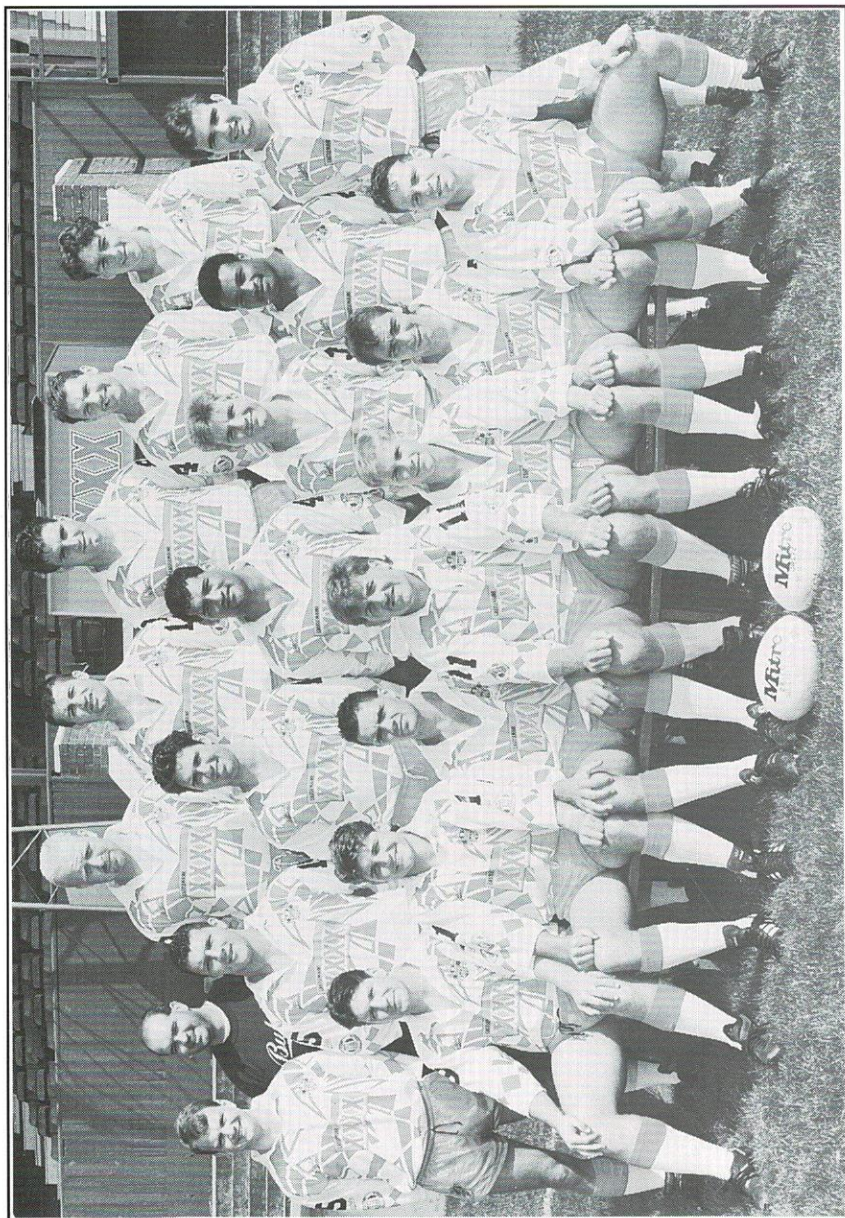
PRUDENTIAL BUILDINGS

UNION STREET, OLDHAM

Tel: 061-624 6811 (Oldham) or 0706 815712 (Shaw) Fax: 061-624 3743

Licensed Credit Brokers and are regulated by the Law Society in the conduct of investment business.

OLDHAM RLFC



Back row (left to right): Tim Street, Shaun Allen, Austin Donegan, Keith Newton, David Bradbury.
 Centre: Steve Robinson, Peter Tunks (coach), Barrie McDermott, Simon Longstaff, Charlie McAlister,
 Steve Warburton, Richard Irving, Chris Joynt.
 Front row: Richard Russell, Vince Nicklin, Tommy Martyn, Paul Round (captain), David Pitts, Neil Holding, Richard Pachniuk.

NEIL GIBBISON

B.D.S., V.U. Manc.

DENTAL SURGEON

36 Oldham Road
 Uppermill
 Oldham OL3 6HV

Telephone:
0457 872108



**EDWARDS
 VEEDER**
 CHARTERED
 ACCOUNTANTS

INCORPORATING G. E. INNES & CO.

are proud to be associated with a

WINNING TEAM

*For personal service with professional
 expertise,
 give us a call on*

061-620 2133

Brunswick Square
 Union Street
 Oldham OL1 1DE

SUMMER 1992 WHY BOOK NOW?

THE EARLY BOOKER BENEFITS WITH ...

- ★ **FREE INSURANCE** ★ Lower Deposits
- ★ Better Choice of Hotels ★ Better Early Prices
- ★ Better Child Discounts & **MORE FREE CHILD PLACES** ★ The Holiday you want at the right price
- ★ Hotel of your choice more likely to be available
- ★ Price Guarantees

Don't forget ... for holidays **home and away**, we're **top of the league** for travel service.

Kick the rest into touch and try us to **tackle** your holiday arrangements.

WE'RE CHAMPIONS!

27 Henshaw Street, Oldham. Tel: 061-633 2232

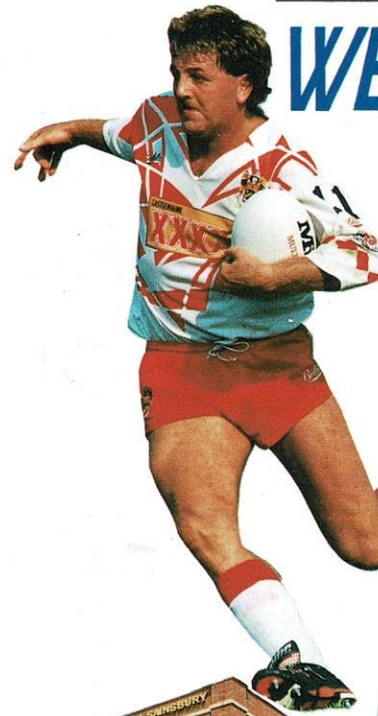


Bob Soper
 TRAVEL

ACTION REPLAY



Steve Warburton in determined mood in the recent game against Sheffield Eagles.



WE'RE THE OTHER TEAM TRYING FOR OLDHAM!

OLDHAM METROPOLITAN BOROUGH COUNCIL

We're trying for Oldham economically, environmentally, socially, educationally, recreation-ly, culturally and in so many other ways.

Just as Oldham Rugby is trying for all its supporters and the people of Oldham.

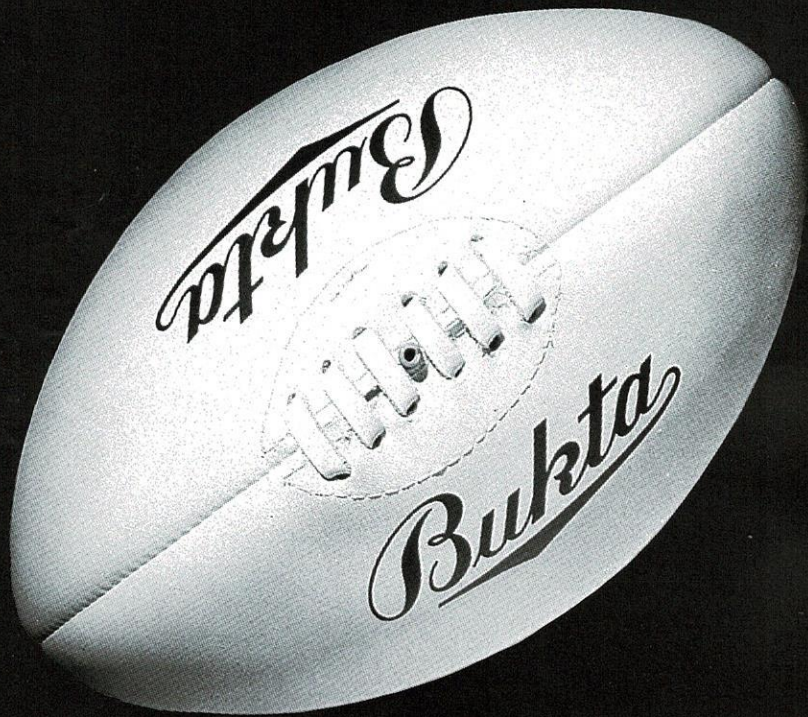
Telephone inquiries about Council policies & activities to 061-678 4707.



OLDHAM 
Metropolitan Borough 

SPORTSWEAR

Bukta



WORN BY PROFESSIONALS

For further information and brochures contact:
Bukta Sportswear on 061 876 5066

**· WIN · WIN · WIN ·
JOIN LIFELINE
NOW!**

Over **£70,000** prizemoney
Plus Cars, Holidays and
Lots More won every year
by **LIFELINE MEMBERS**



For details contact:
Susan, Peter or John

061-626 4501

NEXT HOME GAME
v
ROCHDALE HORNETS

Sunday, September 29th
Kick off 3.00 p.m.