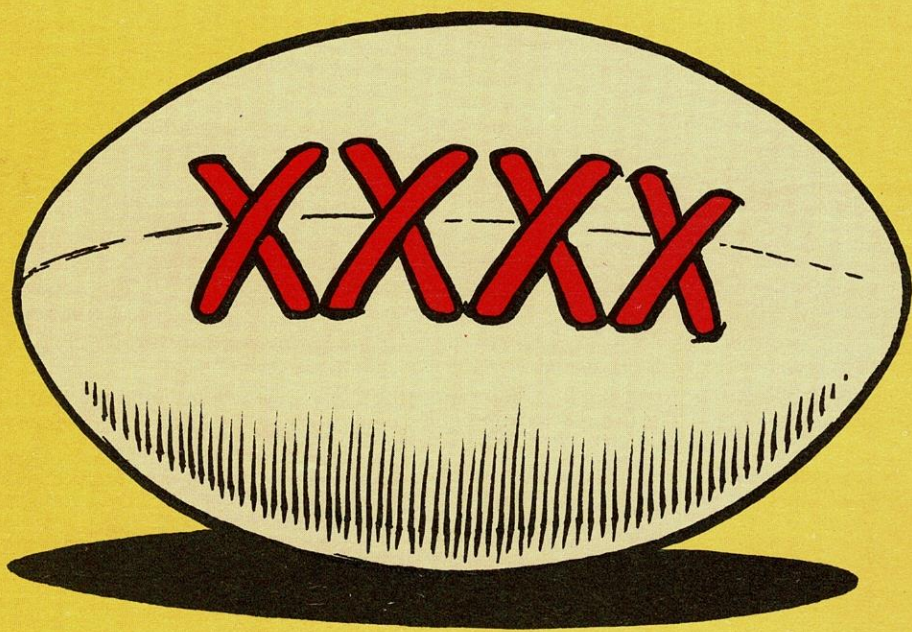


**OLDHAM RLFC  
WOULDN'T GIVE A**



**FOR ANYTHING  
ELSE.**

Brewed under licence in the U.K.

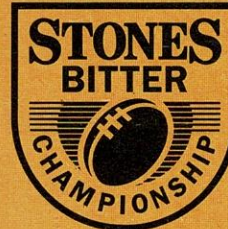
Designed and Printed by Chester TV Graphics, Rossfield Road, Ellesmere Port, South Wirral, Cheshire L65 3BS. Tel: 051-355 5838. Fax 051-357 1978

# OLDHAM

CASTLEMAINE

**XXXXX**

rugby league football club p.l.c.



Club Sponsor:  
CASTLEMAINE  
XXXX

Ground Sponsor:  
REDDISH  
DEMOLITION -  
LTD.

Man of the Match  
Sponsor:  
THE  
WHITEHOUSE  
Stalybridge

**OLDHAM  
v.  
LONDON C.**

Sunday,  
30th August, 1992  
Kick-off 3.00 p.m.

OFFICIAL  
PROGRAMME **£1**



**OFFICIAL MATCHDAY PROGRAMME**

# Healthier. Fitter.

Seton Healthcare Group plc, an established and growing force in the healthcare, sport and leisure markets, has an outstanding track record.

A policy of continual reinvestment and acquisition to develop and expand the product portfolio has ensured healthy sustained and profitable growth, making the Group fitter than ever for the challenges of the future.

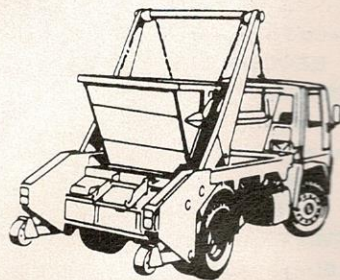
 Seton  
Healthcare Group plc

SETON HEALTHCARE GROUP plc, TUBITON HOUSE, OLDHAM OL1 3HS, ENGLAND.  
TELEPHONE: 061-652 2222. TELEX: 669956 (SETON G). FAX: 061-626 9090



## **HOLROYD Skip Hire Ltd.**

**DIGGER & TRACKED  
MACHINE HIRE**



**YOUR FIRST CHOICE IN  
WASTE REMOVAL**

TELEPHONE:

**061-624 1118 OR 061-624 1311**

EVENINGS/FAX:

**061-624 1171**

LITTLE END FARM, MOORSIDE, OLDHAM.

# *Bukta*

## SPORTSWEAR

### WORN

by

## PROFESSIONALS

# OLDHAM RUGBY LEAGUE FOOTBALL CLUB

The Pavillion, Watersheddings, Oldham  
Telephone: 061-652 5244 and 061-624 4865

## CLUB HONOURS

### Rugby League Championship Play-off Winners:

1909-10, 1910-11, 1956-57

### Runners-up:

1906-07, 1907-08, 1908-09, 1921-22, 1954-55

### First Division Champions:

1904-05

### Second Division Champions:

1963-64, 1981-82, 1987-88

### Rugby League Challenge Cup Winners:

1898-99, 1924-25, 1926-27

### Runners-up:

1906-07, 1911-1912, 1923-24, 1925-26

### Lancashire Cup Winners:

1907-08, 1910-11, 1913-14, 1919-20,

1924-25, 1933-34, 1956-57, 1957-58,

1958-59

### Runners-up:

1908-09, 1911-12, 1918-19, 1921-22,

1954-55, 1966-67, 1968-69, 1986-87,

1989-90

### Lancashire Championship Winners:

1907-08, 1909-10, 1921-22, 1956-57,

1957-58

### Runners-up:

1908-09, 1910-11, 1911-12, 1919-20,

1923-24, 1954-55

### Lancashire Shield Winners:

1975-76, 1979-80

### Colts Premiership Trophy:

1979-80

### Second Division Premiership:

1987-88, 1989-90

### Wigan Sevens Winners:

1991-92

### Directors:

Jim Quinn (Chairman)

John Chadwick, Tom Patterson

Mike Winterbottom, Ian Carr

**General Manager:** T. Donovan

### Hon Doctors:

Dr. I. Crook, Dr. D. Atherton

**Dental Surgeon:** Mr. N. Gibbison

**Physiotherapists:** Mr. N. Hodgson

Mr. A. Bonnelle (Adviser)

**Assistant Physiotherapist:**

Mr. J. Watkins

**Hon. Secretary:** Mr. F. Howarth, B.A.

**Coach:** Peter Tunks

**Assistant Coach:** Eric Fitzsimons

**'A' Team Coach:** John Prince

**Youth Development Officer:**

Ian McCorquodale

### Hon. Consultant

**Orthopaedic Surgeons:** Mr. H. Thompson, Mr. D. Walker

**Safety Officer:** Roger Norris

**Official Timekeeper:** Mr. J. Roscoe

### Club Records:

**Record Victory:** 67-6 v Liverpool City, April, 1959

**Record Defeat:** 11-67 by Hull K.R., September,

1978

**Record Attendance:** 28,000 v Huddersfield,

24 February, 1912

**Record Receipts:** £37,505.50 v Wigan,

5th October, 1989

**Record Transfer Fee Paid:** £70,000 to

Halifax for Tony Anderson, March 1990

**Record Try Scorer:** Reg Farrar, 49 tries,

1921-22 season

**Record Goal Scorer:** Bernard Ganley,

224 goals, 1957-58 season

**Record Point Scorer:** Bernard Ganley, 28 points

v Liverpool City, April 1959

**First Game:** 21st October, 1876 v Stalybridge

**Highest Number of Points Scored:** Bernard

Ganley, 2,881

**Most Appearances:** Joe Ferguson, 685

**Most Tries:** Pre 1900, Jack Hirst, 233

Since 1900, Alan Davies, 182

# FROM the BOARDROOM

by

CHAIRMAN JAMES QUINN



At the start of a brand new Watersheddings season I would like to take this opportunity of welcoming everyone to the club for the opening game against our friends from London Crusaders.

The very fact that you are here shows that you are backing us in the best possible way, so I do hope you don't regard my following remarks as preaching to the converted.

It is no secret that the club is deep in debt, but I do not want to dwell on that aspect of Watersheddings life when we are all about to settle down for the start of what will, hopefully, be an exciting season of Rugby League football.

Suffice to say that the club needs all the help it can get from as many sources as possible - from the major sponsor at one end of the equation to the loyal fan who perhaps has to make sacrifices so that he can bring his wife and family to the game.

Buy an item in the Souvenir Shop and you are helping the club. No contribution is too small. If you have bought a programme today you are helping the club.

If you are a member of Lifeline or Cashline you are helping the club.

Please don't think we rely exclusively on those who can contribute much.

Most of all, we rely on you, the **SUPPORTERS**, for it needs only a little help from a lot of people to make a significant impression on what we are trying to achieve.

In return, you can rest assured that the Board of Directors, coach Peter Tunks and the entire backroom team will leave no stone unturned in their efforts to bring you an exciting team and one which can make you proud to be an Oldham supporter.

I know that the Second Division format is not everyone's cup of tea, but there will be a lot of interesting derby games this season - Rochdale, Swinton, Huddersfield etc - and we feel we have genuine reason for believing that we can be up there fighting for promotion or even for the £23,000 Stones Bitter title prize.

There are the cup-ties to look forward to, also, and I am sure that as the season unfolds you will warm to the team Peter Tunks has assembled and to the new boys he has brought in like Tony Solomona, Ben Olsen, Mark Sheals, Stuart Cocker, Mark Meadows, Des Maea and Hugh Gumbs.

We appreciate that we are in the entertainment business and that the onus is on the club to provide a team the fans want to watch. I hope you will agree that we have done our best to provide such a team for 1992-3.

If so, do us a big favour that won't cost you a penny . . . tell your friends, workmates and relatives that we are worth a visit. Thanks in anticipation.

THIS PAGE IS SPONSORED BY JENKINSON & CO.,  
ACCOUNTANTS, 6A LORD STREET, OLDHAM.  
TEL: 061-624 2550

## TODAYS SPONSORS

are

Ground Sponsor:

**REDDISH DEMOLITION LTD.**

Man of the Match Sponsor:

**THE WHITEHOUSE, STALYBRIDGE**

# IN TOUCH

## RUGBY LEAGUE WORLD CUP FINAL AT WEMBLEY

The 1992 Rugby League World Cup Final between Australia and Great Britain, to be staged at Wembley Stadium on Saturday, 24th October, has already attracted ticket sales of nearly 30,000.

The climax to a three-year qualifying competition is targeted to attract a world record Rugby League attendance, the capacity at all-seater Wembley being more than 77,000.

The record gate for a Test or World Cup match in Britain was the 54,569 at the First British Coal Test at Wembley on 27th October, 1990, when Great Britain beat Australia. The highest-ever crowd in Australia was 70,024 for the Anglo-Aussie Test at Sydney Cricket Ground in June 1932.

Australia have finished top of the five-nation table, each country having played the other home and away during Test series since 1989. Great Britain qualify for the eagerly-awaited final by leading New Zealand on points difference, both having collected 10 points from their eight fixtures. For the second successive World Cup competition, Australia have conceded home advantage as they did in 1988, when defeating New Zealand in Auckland.

Seat tickets, priced £37, £32, £25, £19 and £15, plus the Olympic Gallery seats at £50, are now available from The Rugby Football League, 180 Chapeltown Road, Leeds LS7 4HT, cheques and postal orders made payable to The Rugby Football League. To order by Access or Visa telephone the **TICKET HOTLINE** on **0532 629991**, Monday to Friday between 9.00 a.m. and 5.00 p.m.

Tickets are also available from the Wembley Arena Box Office. Telephone bookings can also be made on 081-900 1234 or 071-240 7200 (subject to a ticket service charge).

## G. BARLOW & SONS LTD.

UNION STREET WEST, OLDHAM

*Coach Proprietors and Funeral Directors*

**Tel: 624 4301/624 9116**

**LITTLEMOOR  
MILL CARPETS**  
Littlemoor Lane  
Oldham  
(off Ripponden Road)

**FITTED  
CARPET  
SPECIALISTS**

Fitted by experts  
within 7 days

Ring for  
**FREE QUOTATION**  
**061-620 9866**

Our BED CENTRE  
always has a big  
range in stock - call  
in and see

A family business  
that  
looks after your  
family's needs...

## BEE FAMILY FINANCE

If you require credit for  
\*Household Goods  
\*Carpets  
\*Furniture  
\*TV's  
\*Car Repairs etc.  
JUST CALL IN AT THE  
**BEE**  
FOR FRIENDLY ADVICE

\*We can also arrange  
credit  
facilities for leading  
fashion shops  
in Oldham and  
Manchester.

**061-624 9908**  
21 Retiro Street,  
Oldham

\*WRITTEN DETAILS ON REQUEST\*

## OGDEN & PARTINGTON

CERTIFIED  
ACCOUNTANT

D. J. TAYLOR, F.C.C.A.  
15 Queen Street  
Oldham OL1 1RD

**Telephone:**  
**061-624 1177**

Your Hosts  
Stephen and  
Pauline Wilde

Welcome You to

## The Clarence Hotel

Greenfield



Bar Meals -  
Breakfasts and  
Small Parties etc.



**Telephone 045**  
**7 872319**

*OPEN 6 DAYS*  
**ROUGH'YEDS**

become

**SMART'YEDS**

at

**HEADHUNTERS**

Professional Hairdressing  
138-140 Ashton Road,  
Oldham  
Tel: 061-624 2984  
also at

**Moston and Bolton**

Payne's  
**CONFECTIONERS**  
**LTD**

73 Lees Road  
Oldham  
624 7391

**Bakery  
Produce  
Supplied  
FRESH  
DAILY**

The  
Village  
Manor  
Restaurant

\*

HIGH STREET  
UPPERMILL  
SADDLEWORTH

\*

**Telephone:**  
**0457 873944**  
or  
**061-624 6056**

*"Monty's"*



NIGHTCLUB

*OLDHAM'S  
FOREMOST  
FREEHOUSE*

Meals always  
available

17/21 Mumps,  
Oldham  
Tel: 061-620 9566

## PROCARE by Medipost Limited

- For all your team's medical requirements, eg. first aid, sports supports, strappings & medical bags etc.
- Contact Procare on 061 678 0233 for a full catalogue



- Suppliers to all professional and amateur clubs

## WE'VE CURED HEADACHES FOR THE ROUGHYEDS



Manufacturers of upholstery fillings for over a century, Platt & Hill make foam and fibre fillings of the highest quality right here in Oldham.

So reliable are our products, that Oldham RLFC have selected them to cushion the uprights of their goal posts.

In a way, you see, we've prevented headaches all round!

**PLATT & HILL**  
FOAM AND FIBRE FILLINGS

FIBRE FILLINGS DIVISION;  
Belgrave Mill, Keswick Avenue,  
Oldham, Lancs OL8 2LZ.  
Tel: 061-626 4638. Telex: 669550.  
Fax: 061-627 3265.

# COMMERCIAL CORNER

IS SPONSORED BY  
THE SHEPHERDS BOY, HUDDERSFIELD ROAD, OLDHAM  
BECKS BEERS & HOME COOKED FOOD

Here we go again - the start of a new campaign which promises to be as fast, furious and exciting as ever.

To complement the performance of the team, we will be offering the very best in off the field commercial activities.

Our Club Sponsor for this season is, once again, Castlemain XXXX, so look out for various FOUREX promotions in future matchday programmes.

Today we welcome as Ground Sponsor - **REDDISH DEMOLITION LTD.** and as Man of The Match Sponsor - **THE WHITEHOUSE, Stalybridge.**

Remember, whatever your requirements, Oldham Rugby has a Sponsorship Package to suit. An afternoon at Watersheddings with a four-course lunch or buffet in the Pavilion before the game and a buffet and choice of bars after the game is a great way for Companies, large or small, to entertain customers or reward hard-working employees.

We really can promise you the very best in hospitality and terrific value for money.

**CALL US TOMORROW!**

We would also like to take this opportunity to thank everyone who has chosen to advertise in our new-look programme. These people support Oldham Rugby, please try to support them.

There is still time to place an ad. for the rest of the season at a very reasonable cost.

ONCE AGAIN JUST GIVE US A CALL.

Contact: **PETER YOUNG, JOHN WATKINS or JUDY CAMPBELL**

**061-624 4865**

### LIFELINE WINNERS WEEK No. 45

£1,000 - 2587 J. THOMPSON, c/o The Railway, Clayton Bridge

£50 - 0829 R. FURNESS, Hollingwood.

Special Prize Sport-a-Vision TV-Radio-Alarm 3145 G. HARTLEY, Chadderton

### CASHLINE WINNERS WEEK No. 81

**SUPER BONUS £500** - M0278 J. BROADBENT (Agent 056 Platt and Hill)

Monday £100 - B 2106 J. MAINWARING (Agent 279 A.R. & S.A. News)

Tuesday £100 - C4106 E. GARRETT (Agent J. Eccles)

Wednesday £100 - A6201 A. ADAMSON (Agent 065 Boltmakers)

Thursday £100 - F1054 R. TOLLIDAY (Agent 055 W. Silverwood)

Friday £100 - C0011 A. R. MOTTLEY (Agent 049 M. Nuttall)

Saturday £100 - F6196 D. LAWSON (Agent P. Dickens)

# SCORE A GREAT DEAL AT RICHARD CORT



RICHARD  
CORT  
(OLDHAM) LTD



ROVER



OPEN  
7  
DAYS

COPSTERHILL ROAD, OLDHAM  
☎ (061) 633 1661



# A WATERSHEDDINGS WELCOME TO LONDON C

Welcome back to the 'Watersheddings' this afternoon, for the start of our campaign to fight back into the First Division. Where we truly belong.

I am proud to have been given this opportunity to captain the Oldham first team, as it has been a life-long ambition since my early days in rugby. Also I would like to take the opportunity to welcome our new members of the playing staff and wish the whole team good luck for the new season.

Peter Tunks has been busy in the off season, striving to strengthen our rapidly-improving squad and has signed many good strong players.

After welcoming our new players to the club. I feel I must wish every success to Duncan Platt, Keith Newton and especially to my long-time friend, Tim Street, who had a fabulous season last year. Good luck lads in the First Division.

Two things have stayed in my mind from last season and will play a major part in our promotional drive this season, were the tremendous spirit shown by the players and the equally tremendous support which I and the team thank you for and hope you will keep it up this season.

Today's opponents are no strangers to us as we played them a number of times last season. On each occasion only one or two tries have separated us. Thus providing one of the toughest fixtures last season and I do not expect today's to be any easier. So your support will be vital today and for the rest of the season.

*Enjoy the game - Richard Russell*

## LONDON CRUSADERS PLAYER PEN PICS - 1992/1993 SEASON

**COLIN ATKINSON** - 5 ft. 10 in. 78 kg. Winger/centre. Representative honours at Yorkshire Schoolboys, British Polytechnics, England Students and GB Students. Bought from Halifax last season, Colin is a fast, strong-running and hard-tackling winger, strengthening a back line to watch this season.

**SHANE BUCKLEY**. 184 cm. 87 kg. Winger/centre. Representative honours with Queensland U21 - 1988 and 1989, Queensland Rep. Side 1989-91 and Queensland Residents side 1989-91. Top try scorer last season for the London Crusaders, Shane is a problem to defences and an asset to an attacking side.

**STEVE ROSOLEN** - 6 ft. 1 in. 93 kg. Loose Forward. Representative honours for Wide Bay, Queensland Country and Brisbane. Steve came over from North Sydney and was voted Player of the Season for 1991-92 for London Crusaders. Steve is the controlling force in the forward pack this season with his vast experience and talent. One to watch for 1992-93.

**MATTHEW DRAY** - 5 ft. 8 in. 80 kg. Full Back or Five Eighth. Representative honours for North Sydney, 1989. Matthew is reliable under a high ball and always willing to counter-attack. He's quick and the general of the back line.

**DARRYL PITT** - 185 cm. 93 kg. Centre. Darryl's career to date spans Norths Banyo, Fortitude Valley, Carlisle and Fulham R.L.F.C. A player who holds his first team spot for London Crusaders by being a hard-attacking back. Darryl was voted Lancashire Supporters Club Player of the Year for 1991-92 season.

**CHRIS WINSTANLEY** - 5 ft. 8 in. 12 stone. Half Back or Full Back. Representative honours for South Island, New Zealand, in 1986 and 1987, previously played for the Marist Club in New Zealand. Became a regular first team fixture last season at half back. Chris likes to run with the ball and is secure in defence.

**CHRIS SMITH** - 6 ft. 2 in. Second Rower. Chris played for St. Mary's A.R.L.C. as well as Richmond R.U.F.C. before joining London Crusaders last season. Chris made a fantastic transition to rugby league and is a regular first teamer with the ability to slot over goals from all over the pitch.

**DANNY MULKERIN**. 186 cm. 95 kg. Front/Second Rower. Danny is a strong-running forward, his work rate is 100% for 80 minutes and a real grafter. A forward to watch for the 1992-93 season.

**NICHOLAS HALAFIHI** - 6 ft. 98 kg. Second Row/Loose Forward. Nick played for GB Students as well as Hull Colts and Sheffield Eagles, where Nick was bought in October 1991. Nick is a hard-working forward with the speed to break away from the opposition and score tries.

**CHRIS WHITELEY** - 6 ft. 16 stone. Prop. Chris played B.A.R.L.A. U19's and comes from Salford. Chris adds experience to a forward pack and is a damaging tackler with endless energy.

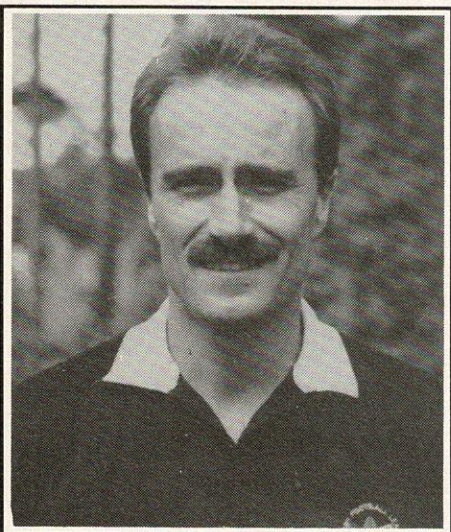
**BERNIE GILBERT** - 6 ft. 102 kg. Second Row. Bernie has had representative honours with South Island, West Coast and Sunshine Coast Falcons. Bernie is a fast-running, strong and mobile forward.

**TONY SHAW** - 5 ft. 11 1/2 stone. Scrum Half/Stand Off. Representative honours for Cheshire and North of England U16s rugby union. First played rugby league at Oxford University. Young player, with ability beyond his years.

**SCOTT ROSKALL** - 6 ft. 3 in. 93 kg. Centre. New signing from Gold Coast Giants, previously played for Runaway Bay. Scott is a big centre with the ability to score tries. He's one to look out for this season.

THIS PAGE IS SPONSORED BY JENKINSON & CO.,  
ACCOUNTANTS, 6A LORD STREET, OLDHAM.  
TEL: 061-624 2550

# TODAY'S MAN in the MIDDLE



## PAUL VOLANTE IS TODAY'S REFEREE.


Paul comes from Birstall and became a Grade One Referee in 1983-84.


Paul was born on 30th June, 1952.


**BELIEVE IT OR NOT, RUGBY LEAGUE  
AND RUGBY UNION DO AGREE  
ON SOMETHING.**





Official supplier of match and training balls to:

Rugby League 

Welsh Rugby Union 

B.A.R.L.A. 

South African Rugby Union 

Irish Rugby Union 

Mitre Sports International Ltd., Bay Hall Works, Birkby, Huddersfield,  
West Yorkshire HD1 5AJ. Tel: 0484 537488. Fax: 0484 530042.

# TUNKS' TALKBACK

Welcome to our first home game of the season as we

take on London Crusaders.

Ross Strudwick's men have

benefited from the Rugby

League's decision to allow

him up to 10 overseas play-

ers this year, which will

enable him to field one of the

strongest sides in the Second

Division.

On our own side, we have

several new faces and I feel

that the team is considerably

stronger than last year. Some

of the names may be unfa-

miliar to you but, as we have

five of the first six games

here at Watersheddings, you

should soon get to know

them well.

As always, we ask you to get

behind the team as we intend

this year for our home record

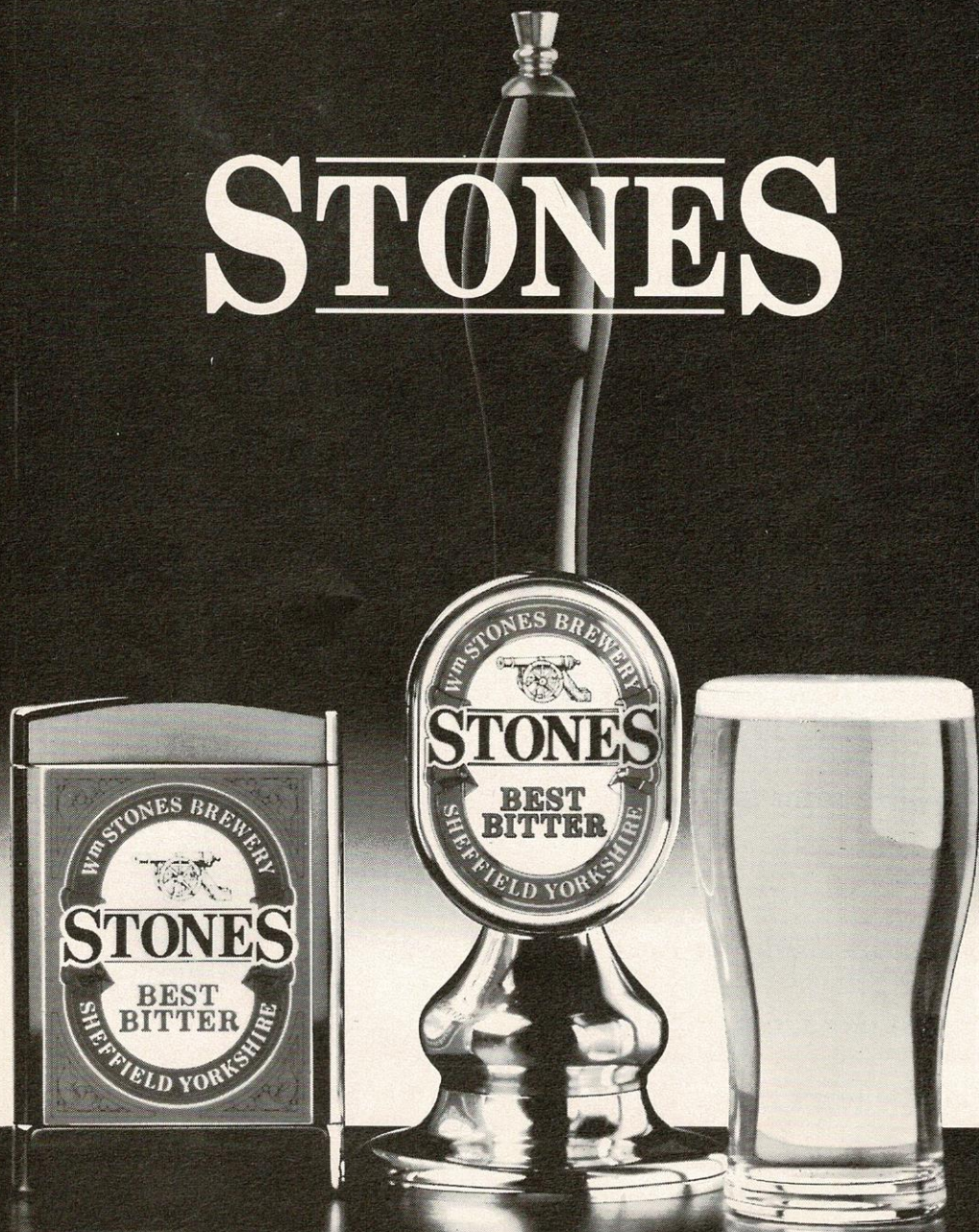
to be as good as last years

away record.

Enjoy the game.

**THIS PAGE IS SPONSORED BY  
NORTHERN ROCK BUILDING SOCIETY, OLDHAM**

# STONES



THE MAJOR SPONSOR OF RUGBY LEAGUE.

## PLAYER PROFILE

### 'TINY' SOLOMONA



**Full Name:** Maseese Donald Solomona.

**Date of Birth:** 9.3.65

**Birthplace:** Auckland, New Zealand.

**Height:** 6 ft. 1 inch.

**Weight:** 17 1/2 stone.

**Favourite Drink:** Coke.

**Favourite Food:** Taro and Corned Beef.

**Favourite TV Show:** 60 minutes.

**Favourite Music:** Reggae and Rap.

**Hobbies:** Basketball and Para Gliding.

**Previous Clubs:** Richmond, Auckland; Glenora, Auckland; Widnes.

**Biggest Influence on Career so far:** My brothers, who all play.

**Favourite Player:** Wally Lewis.

**Favourite Ground:** Grey Lynn Park, Auckland.

**Most Difficult Opponent:** All of them.

**Most Memorable Match Seen:** The English Ashes Test Series and New Zealand.

**Biggest Thrill:** Lifting the Pacific Cup for Western Samoa in 1990.

**Biggest Disappointment:** Being injured.

**Personal Ambition:** To play consistently and well.

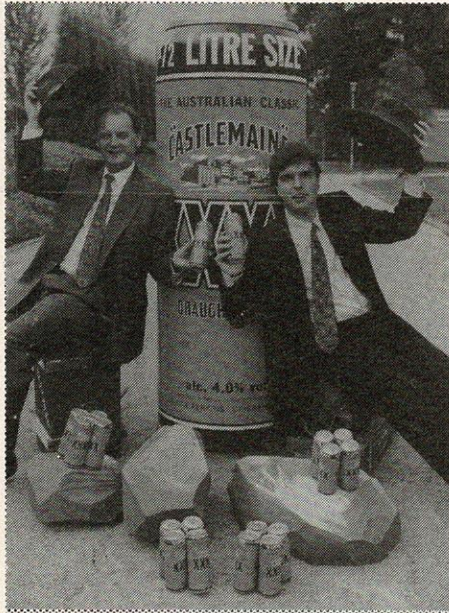
**Person you would most like to meet:** My Grandparents.

**Have you ever been mistaken for anyone famous:** I was recently mistaken for a New Zealand Test Cricketer.

*THIS PAGE IS SPONSORED BY TANFIELD LTD.,  
TOWBAR & TRAILER CENTRE, CHAMBER ROAD, OLDHAM.  
TEL: 061-633 4872*



**CHEERS TO 1992/93 FROM  
CASTLEMAINE XXXX**



Castlemaine XXXX is delighted to be supporting Oldham RLFC for a second season - one which we hope will see the club climbing back to where it belongs, the First Division. The famous XXXX name will be emblazoned on the shirts of several new players this season - future XXXX Players of the Month perhaps? We'll be presenting this award again to the men who make the most impact on the club's performance, culminating in the sought-after XXXX Player of the Year title. More news of these awards in future programmes.

**NEW LOOK FOR OLDHAM -  
AND XXXX TOO!**

Not only is Oldham Rugby



**CASTLEMAINE**



**XXXX**



**TEAM CHECK**

**SUNDAY, 30th AUGUST, 1992**

**OLDHAM** TEAM CHANGES

1. SEAN TYRER
2. SCOTT RANSON
3. IVA ROPATI
4. STUART COCKER
5. GARY CHRISTIE
6. TOMMY MARTYN
7. SEAN DEVINE
8. MARK SHEALS
9. IAN BATES
10. BARRIE McDERMOTT
11. SHANE TUPAEA
12. MARK MEADOWS
13. RICHARD RUSSELL
14. TINY SOLOMONA
15. BEN OLSEN

**PENALTIES**

1	2	3	4	5
6	7	8	9	10
11	12	13	14	15
16	17	18	19	20

**SCRUMS**

1	2	3	4	5
6	7	8	9	10
11	12	13	14	15
16	17	18	19	20

**LONDON C.** TEAM CHANGES

1. MATTHEW DRAY
2. COLIN ATKINSON
3. SCOTT ROSKALL
4. DARRYL PITT
5. SHANE BUCKLEY
6. ANTHONY SHAW
7. CHRIS WINSTANLEY
8. COLIN CORCORAN
9. GLEN WORKMAN
10. DAVE ROTHERAM
11. NICK HALAFIHI
12. CHRIS SMITH
13. STEVE ROSOLEN
- 14.
- 15.

**PENALTIES**

1	2	3	4	5
6	7	8	9	10
11	12	13	14	15
16	17	18	19	20

**SCRUMS**

1	2	3	4	5
6	7	8	9	10
11	12	13	14	15
16	17	18	19	20

sporting some changes this season, but Castlemaine XXXX has also unveiled a new look - and like our favourite club, it's stronger, more streamlined and ready to take on any challenge from competitors.

To give Castlemaine XXXX even more appeal for the discerning lager drinker, the alcohol by volume level of draught XXXX has been increased from 3.7% to 3.9%, with an increase to 4.0% for XXXX in the newly-designed half litre can size. It looks and tastes better than ever, with even more of that genuine Aussie character - but then it's brewed, as ever, to an authentic recipe using genuine Australian ingredients and brewing techniques!

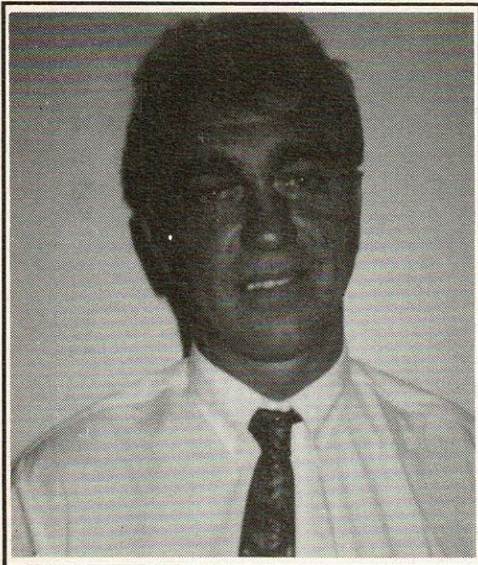
\* \* \* \*

**BIG XXXX PRIZES ON THE WAY**

Remember, you heard it here first. An exciting new XXXX promotion will soon be launched in Tetley pubs and clubs, including the Pavilion. We can't give away any details just yet, but the prospects look great and there are some spectacular prizes to be won. It's XXXX's biggest national promotion yet - and you can find out more about it on this page in its new regular position by Team Check.

Watch this space though for more XXXX news, views, gossip and prizes throughout the season from Castlemaine XXXX, the Australian Classic.





# 'A' TEAM ROUND UP

with COACH JOHN PRINCE

To the Oldham Rugby League Club, its supporters, sponsors and backroom staff. I would like to say how honoured I am to be given the position of Alliance Coach with the club and also given the opportunity to further my love of the game in working with young players and helping to build a solid base for the club's future.

As far as my history is concerned, I have been in Rugby League for over 30 years as an amateur and professional player and, on retirement, joined the National Coaching Scheme. I have worked over the last 11 years in many coaching and administrative roles in Youth Rugby, including County Coaching and Schoolboy Rugby.

I founded, 11 years ago, Parkside

THIS PAGE IS SPONSORED BY BILL AND BRENDA ROGERS

Golborne, an under 11's side that now boasts two open age teams and youth and junior sides down to under eight. The youth sides that I have coached have produced 30 players in the last four years that have made it to the professional game.

I have worked for Oldham R.L. in a voluntary capacity for the last eight months as a scout and in a coaching role for the last three A Team games, including that final game of the season when we played a strong Leeds A Team, containing two International players off the park.

After turning down many professional coaching opportunities over the last four years, I have joined Oldham because, in Peter Tunks, his fellow coaches, the directors and players, I see a set of people dedicated to taking Oldham to a stable and secure future.

I can only add that I will give 100% in working to help Oldham the best in Rugby League.

Yours in Sport,  
JOHN PRINCE

## ALLIANCE FIXTURES 1992\93

Saturday, 29.8.92	Sheffield Eagles	H	1.00 p.m.
Saturday, 5.9.92	Carlisle	A	12.00 p.m.
Saturday, 12.9.92	Keighley	A	2.30 p.m.
Saturday, 19.9.92	Salford	H	1.00 p.m.
Friday, 2.9.92	Ryedale York	A	7.30 p.m.
Saturday, 10.10.92	Leigh	H	1.00 p.m.
Friday, 30.10.92	Salford	A	7.30 p.m.
Saturday, 14.11.92	Carlisle	H	1.00 p.m.
Friday, 20.11.92	Huddersfield	A	7.30 p.m.
Saturday, 5.12.92	Hemel Hempstead	H	1.00 p.m.
Saturday, 12.12.92	Swinton	H	1.00 p.m.
Friday, 18.12.92	Bramley	A	7.30 p.m.
Saturday, 2.1.92	Swinton	H	1.30 p.m.
Saturday, 16.1.93	Hunslet	H	1.00 p.m.
Thursday, 23.1.93	Leigh	A	7.30 p.m.
Saturday, 6.2.93	Dewsbury	A	2.00 p.m.
Saturday, 13.2.93	Workington	H	1.00 p.m.
Saturday, 20.2.93	Hemel Hempstead	A	2.30 p.m.
Saturday, 27.2.93	Doncaster	H	1.00 p.m.
Saturday, 6.3.93	London Crusaders	H	1.00 p.m.
Saturday, 20.3.93	Workington	A	2.30 p.m.
Saturday, 27.3.93	Huddersfield	H	1.00 p.m.

## WRIGLEY CLAYDON & ARMSTRONGS

### SOLICITORS

Complete Legal and Financial  
Service



PRUDENTIAL BUILDINGS  
UNION STREET, OLDHAM



Tel: 061-624 6811 (Oldham)  
or 0706 815712 (Shaw)  
Fax: 061-624 3743

Licensed Credit Brokers

## NEIL GIBBISON

B.D.S., V.U. Manc.

## DENTAL SURGEON

36 Oldham Road  
Uppermill  
Oldham OL3 6HV

Telephone:  
**0457 872108**

## Cascade Ford Jct. 3 - M63



"we're only 30 minutes away"



Over **100 USED CARS**  
in stock - always



51 BARTON ROAD, URMSTON  
**Tel: 061-747 0544**

## OLDHAM R.L. SOCIAL CLUB SHEDDINGS

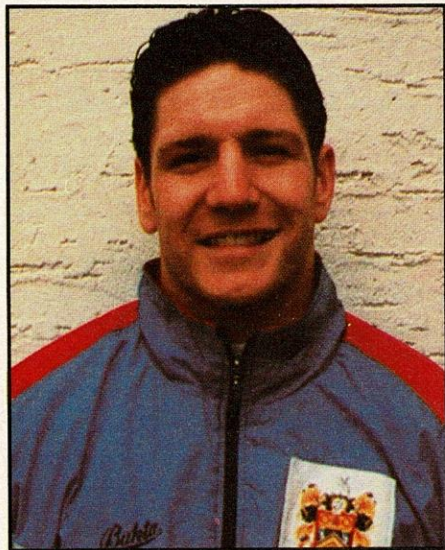
Tel: 061-624 0368



FUNCTION ROOM  
always available  
- FREE to O.R.L.F.C.  
shareholders  
Ring for details

# SKIPPERS' SPOT

with OLDHAM CAPTAIN  
RICHARD RUSSELL



Welcome everyone to this, the first game of the season and to what are my first programme notes as skipper.

I am proud to be nominated as captain of my home town team, as this has been an ambition of mine since my early days in Rugby League.

I look forward to taking up my responsibilities on and off the field and hope we have a tremendous season. There have been numerous changes in playing staff and, as we welcome Peter Tunks new signings, we also see the departure of, amongst others, Duncan Platt, Keith Newton, Chris Joynt and my good friend for many years, Tim Street. Good luck lads in the First Division.

Today we welcome the Crusaders from the capital for what promises to be a hard, tight game.

Last season we met six times and although we won five of the encounters they were all closely contested.

London are always well organised, especially on defence and we must be patient and work hard at our game to come out on top.

I ask that today and for the rest of the season you really get behind us and let's hear you cheering us to victory.

Enjoy the game,

RICHARD RUSSELL

**THIS PAGE IS SPONSORED BY  
WILSON SPORTS TROPHIES, LEES ROAD, OLDHAM**

## HYDE PRECISION COMPONENTS LTD

*For all types of sub-contract machining  
- especially C.N.C. turning and milling.*

*"The ones who have never knocked on"*

**Best wishes to Oldham for the season.**

**Tel: 061-368 3446**

# WAR GAMES

**THE RUGBY LEAGUE CHAMPIONSHIP. LIVE ONLY ON SKY SPORTS.**



Watch the battle for the Rugby League Championship live on Sky Sports every Friday evening.

You'll see all the action, you'll get all the in-depth analysis.

Because when it comes to covering all the sporting action, you'll find that

Sky Sports is in a different league.

**£15  
OFF\* ANY**

**SATELLITE SYSTEM**  
WHEN YOU REDEEM THIS VOUCHER AT  
COLORVISION STORES NATIONWIDE

\*In cash goods or guarantees

**COLORVISION**

From September 1st 1992,  
Sky Sports will be a  
subscription channel of  
British Sky Broadcasting  
Limited. Astra satellite  
receiving and decoding

**SKY  
SPORTS**

equipment is required to  
receive Sky Sports. Written  
details available from Sky  
subscriber services Limited,  
PO Box 43, Livingston, West  
Lothian EH54 7DU.

# PRINCIPAL DATES 1992-1993

## 1992

13th September	County Cups (Round 1)
23rd September	County Cups (Round 2)
7th October	County Cups (Semi-Finals)
17/18th October	County Cup Finals
24th October	World Cup Final (at Wembley)
	<b>Great Britain v. Australia</b>
7/8th November	Regal Trophy (Round 1)
5/6th December	Regal Trophy (Round 2)
13th December	<b>France v. Wales</b>
19/20th December	Regal Trophy (Round 3)

## 1993

2nd January	Regal Trophy (Semi-Final 1)
9th January	Regal Trophy (Semi-Final 2)
16th January	Silk Cut Challenge Cup (Preliminary Round)
23rd January	Regal Trophy Final
30/31st January	Silk Cut Challenge Cup (Round 1)
13/14th February	Silk Cut Challenge Cup (Round 2)
27/28th February	Silk Cut Challenge Cup (Round 3)
7th March	<b>France v. Great Britain</b>
13th March	Silk Cup Challenge Cup (Semi-Final 1)
27th March	Silk Cut Challenge Cup (Semi-Final 2)
2nd April	<b>Great Britain v. France</b>
1st May	Silk Cut Challenge Cup Final
16th May	Stones Bitter Premiership Finals

THIS PAGE IS SPONSORED BY  
MAINTENANCE INSULATION LIMITED, LITTLEBANK STREET,  
OLDHAM - 652 7325

# ATTENDANCES LEAGUE MATCHES ONLY

## FIRST DIVISION

1991/92

WIGAN	14,040	-453	ROCHDALE HORNETS	1,415	-1,127
LEEDS	12,164	+1,602	RYEDALE YORK	1,181	-676
ST. HELENS	8,456	+1,065	CARLISLE	800	+19
HALIFAX	7,181	+2,723	LONDON C.	724	+162
CASTLEFORD	6,465	+446			
WIDNES	6,291	-502	HUDDERSFIELD	2,271	+965
HULL	5,892	-807	KEIGHLEY	1,196	+211
WAKEFIELD	5,022	+174	DONCASTER	1,158	-300
WARRINGTON	5,204	-711	BATLEY	1,145	-43
HULL KR	4,752	-200	DEWSBURY	1,140	+185
BRADFORD N	4,725	-549	BARROW	1,003	+41
FEATHERSTONE R	4,001	-721	BRAMLEY	870	+65
SALFORD	3,785	+1,471	SCARBOROUGH P.	777	-
SWINTON	2,702	+965	HUNSLET	770	+3
			WHITEHAVEN	632	-403
OLDHAM	3,149	-1,945	CHORLEY B	394	-296
LEIGH	3,014	+1,295	HIGHFIELD	319	-313
SHEFFIELD	2,435	-1,596	TRAFFORD B	309	-329
WORKINGTON	1,884	+485	NOTTINGHAM C.	270	+15

# FIXTURES

## SECOND DIVISION

1992/93

### 1992

AUGUST	30	LONDON C.	H	3.00
SEPTEMBER	6	CARLISLE	H	3.00
	13	WARRINGTON	H	3.00
	20	HUDDERSFIELD	A	3.30
	27	SWINTON	H	3.00
OCTOBER	4	FEATHERSTONE ROVERS	H	3.00
	11	ROCHDALE HORNETS	A	3.00
	18	BRAMLEY	A	3.30
	24	WORLD CUP FINAL		
NOVEMBER	1	SWINTON	H	3.00
	8	REGAL TROPHY (Round 1)		
	15	CARLISLE	A	2.00
	22	HUDDERSFIELD	H	3.00
	29	SWINTON	A	3.00
DECEMBER	5	REGAL TROPHY (Round 2)		
	13	FEATHERSTONE ROVERS	A	3.30
	20	BRAMLEY	H	3.00
Boxing Day	26	ROCHDALE HORNETS	H	3.00

### 1993

JANUARY	1	SWINTON	A	3.00
New Year's Day				
	10	BRAMLEY	H	3.00
	17	CARLISLE	A	2.00
	24	ROCHDALE HORNETS	H	3.00
	30	SILK CUT CHALLENGE CUP (Round 1)		
FEBRUARY	7	FEATHERSTONE ROVERS	A	3.30
	13	SILK CUT CHALLENGE CUP (Round 2)		
	21	CARLISLE	H	3.00
	27	SILK CUT CHALLENGE CUP (Round 3)		
	28	LONDON C.	A	3.00
MARCH	7	HUDDERSFIELD	A	3.30
	14	FEATHERSTONE ROVERS	H	3.00
	21	LONDON C.	H	3.00
	4	BRAMLEY	A	3.30
Good Friday	9	ROCHDALE HORNETS	A	3.00
Easter Monday	12	HUDDERSFIELD	H	3.00
	18	LONDON C.	A	3.00

## NEXT HOME GAME CARLISLE

SUNDAY 6th SEPTEMBER, 1992 - KICK-OFF 3.00 p.m.

THIS PAGE IS SPONSORED BY IRENE AND HELEN CALOW

# BACK PAGES

by MICHAEL TURNER

In welcoming everyone back to Watersheddings for the 1992-93 season, the club is introducing a new regular feature in the programme called 'BACK PAGES'.

Elsewhere in the programme, the on-going activities of the club, on the field and otherwise, will be dealt with by the 3 C's (Chairman, Coach and Captain) and while Messrs: Quinn, Tunks and Russell will be keeping you up to date, I will be taking the opportunity to look back.

The format for this feature will be flexible. Sometimes a particular match from days gone by will be reviewed, or as in today's programme, a collection of facts from the club's history will be displayed.

If any readers would like a review of a past game that is now fading in the memory, or perhaps they have only be told about by fathers or uncles etc., please contact me at the address listed below and I will do my best to include this information in a future edition of the programme.

Also in future programmes I am hoping to show some photographs of the much-talked-about incidents in the club's history; Remember Paul Lord's disallowed try or the Bob Beardmore try that was allowed. WATCH THIS SPACE.

Meanwhile, did you know?

Oldham used to play in amber and black. They switched to red and white upon moving to Watersheddings in September, 1889.

In the League game against Hunslet on 26th August, 1970, the Hunslet players were on strike and amateurs Bison's of Leeds turned out for the Parksiders. Oldham won 54-5.

Oldham defeated Higginshaw 38-2 in the Challenge Cup 1st Round on 8th February, 1936.

Three Oldham players figured in the legendary 'Rorke's Drift' test victory over the Australians in Sydney, in 1914; Alf Wood, Billy Hall and Dave Holland.

I am currently researching for a book covering the complete playing records and history of OLDHAM RLFC. If anyone has any old material connected with the club (photos, programmes etc) I would be very interested in viewing such items. Please contact: Michael Turner, 158 Balfour Street, Oldham OL4 1NS. Tel: 061-620 6005

## MIDASPORTS

NEW MARKET HALL,  
OLDHAM  
Tel: 061-678 6199

WARRINGTON STREET  
ASHTON-UNDER-LYNE  
Tel: 061-344 0550

### RUGBY LEAGUE SPECIALISTS

#### FOR THE SUPPORTER

GT. BRITAIN HOME & AWAY  
**NEW** AUSTRALIA HOME & AWAY  
**NEW** LEEDS & WIDNES HOME & AWAY  
**NEW** WIGAN HOME & AWAY  
**NEW** REGULAR TEAMS INC. OLDHAM

AUSTRALIAN N.S.W. SHIRTS  
PENRITH, NORTHS, BALMAIN, EASTS,  
CANBERRA, NEWCASTLE, CANTERBURY,  
BRISBANE, PARAMATTA *PLUS*  
QUEENSLAND STATE OF ORIGIN  
**NEW** SHIRTS

#### FOR THE PLAYER

HEADGUARDS  
MOUTHGUARDS  
SHOULDER PADS  
FOREARM PROTECTORS  
SHIRTS - SHORTS - SOCKS  
NEOPRENE SUPPORTS  
BOOTS - STUDS

**FULL TEAM KITS AVAILABLE:**  
UMBRO - HALBRO - ELLGREN

WE ALSO STOCK A WIDE RANGE OF SPORTS CLOTHING, FOOTWEAR & EQUIPMENT



**EVENING  
CHRONICLE**

No. 1  
for  
local  
**NEWS**  
and  
**SPORT**

# QUIZ

## HALF-TIME TEASERS


Which Clubs play home matches at the following addresses?

1. Ledrington Road.
2. Lowerhouse Lane.
3. Sandy Lane.
4. Preston Road.
5. Kirkhall Lane.
6. Doncaster Road.
7. St. Michael's Lane.
8. Gibbet Street.
9. Attercliffe Road.
10. Jockey Lane.


**Answers**

1. London Crusaders.
2. Widnes.
3. Rochdale Hornets.
4. Hull Kingston Rovers.
5. Leigh.
6. Wakefield Trinity.
7. Leeds.
8. Halifax.
9. Sheffield Eagles.

# OLDHAM



## ClubCall

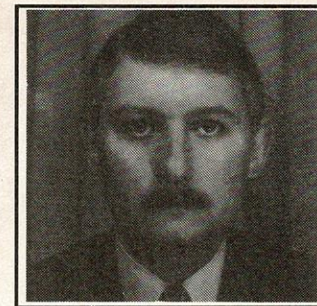


### 0898 12 15 80

**FIRST WITH ALL THE NEWS & VIEWS  
REPORTS 24 HOURS A DAY, 365 DAYS A YEAR  
UP-TO-THE-MINUTE INFORMATION  
FIXTURES, TICKET AVAILABILITY, FEATURES AND MATCH REPORTS  
ALL THE INSIDE STORIES FROM WATERSHEDDINGS - UPDATED DAILY**

Call cost 36p/minute cheap; 48p/minute other times. (Prices correct at time of going to press). Clubcall, 1-9 Downham Road, London N1

# QUOTE - UNQUOTE



with CLUBCALLS GED MASON

Hello from me, Ged Mason and welcome to the first game of the new season. I'll be with you every home game to give you details of what Peter Tunks and the players have been saying about the Oldham performances throughout the season on Oldham Rugby League Clubcall.

Firstly, let me tell you what Clubcall is.

The service comes direct from the club and keeps you, the fan, informed of events at Watersheddings.

On a matchday, be it home or away, we'll have a reporter at the game bringing you regular match reports. Every time the score changes, we'll update the service with an updated match report. So, if you don't travel to say, London or Carlisle, you can follow the team's progress by just picking up a telephone.

At the end of each game there will be a full match report and then, about one hour after the game, there is a post-match reaction from either Peter Tunks or one of his players.

During the week the service is updated with interviews and the very latest news from the club.

Transfers, injury news, forthcoming events, it's all at the end of your telephone.

Don't forget, every time you call you are giving money to the club.

During the pre-season, we covered the pre-season fixtures against Leigh and Widnes and have been building up to today's start by speaking to Peter Tunks, Jim Quinn, Scott Ranson, Richard Russell, Tommy Martyn and many others.

In what has been a very busy close season at Watersheddings on the transfer front, Peter Tunks said last week on Clubcall: 'I'm very much looking forward to the new season. It is a new-look Oldham team and I hope the fans will give them every encouragement over the next nine months'.

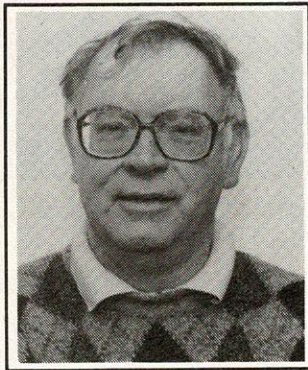
We spoke to New Chairman Jim Quinn, after his appointment. 'I feel really proud and privileged to become the New Chairman, it shows that my fellow Board Members appreciate the work I put into the club, I just hope the fans stick with us'.

I'll be back for the next home game. Please give Clubcall a try. You won't be disappointed.

Yours in sport,  
Ged Mason

# ROGER HALSTEAD looks at PREVIOUS ENCOUNTERS

One man who is sure to be relishing the prospect of today's game is Ben Olsen, the former Crusaders' forward, who joined Oldham a fortnight ago in the player-swap deal that took Richard Blackman to Crystal Palace.



The Danish-born Olsen played for London in five of the six matches between the clubs last season - four in the Second Division, one in the Regal Trophy and a sixth in the semi-final of the Second Division premiership play-off.

Now he finds himself in the Oldham camp, so Oldham will no doubt have plenty of inside information on what makes the Londoners tick.

It doesn't need Ben, of course, to tell us that London play to their strengths, which is stern defence under the umbrella of a sophisticated system, devised and developed by the shrewd Queenslander, Ross Strudwick.

London did well to finish in fourth place last season, ahead of Rochdale Hornets, Carlisle and the relegated clubs, Ryedale-York and Workington.

They beat Huddersfield in a controversial play-off tie in London and then put up a tough fight at Watersheddings before losing 22-14 in the semi-final.

It was the sixth meeting of the clubs and Oldham's fifth victory, but that basic fact tends to minimise the massive contribution London made to the series of tough matches between the two teams.

Oldham's only defeat was a 10-0 reverse at Watersheddings last December, but each of their five wins took a lot of achieving: 23-20 in London, 16-10 at home in the Regal Trophy, 12-8 in London, 16-4 at Watersheddings and 22-14 in the play-off.

In the first win at the Crystal Palace Recreation Centre it took a late try by Tommy Martin, following a kick ahead by Gary Christie, to give Oldham victory and it was a similar close thing in the 12-8 win in London when Chris Joynt forced his way over in the dying minutes.

None of the matches was easy and many fans will recall that brilliant individual try by Logan Edwards which swung the game in Oldham's favour during the 16-4 win at Watersheddings in March.

Overseas players form an integral part of the London squad and the Rugby League Council has given its approval to Crusaders to play up to five foreigners at a time and register an unlimited number.

This is the League's contribution to the battle to establish League in the capital city and one can expect another tough series of matches against Struddy's' men this year, starting with today's encounter and Olsen's appearance against his former mates.

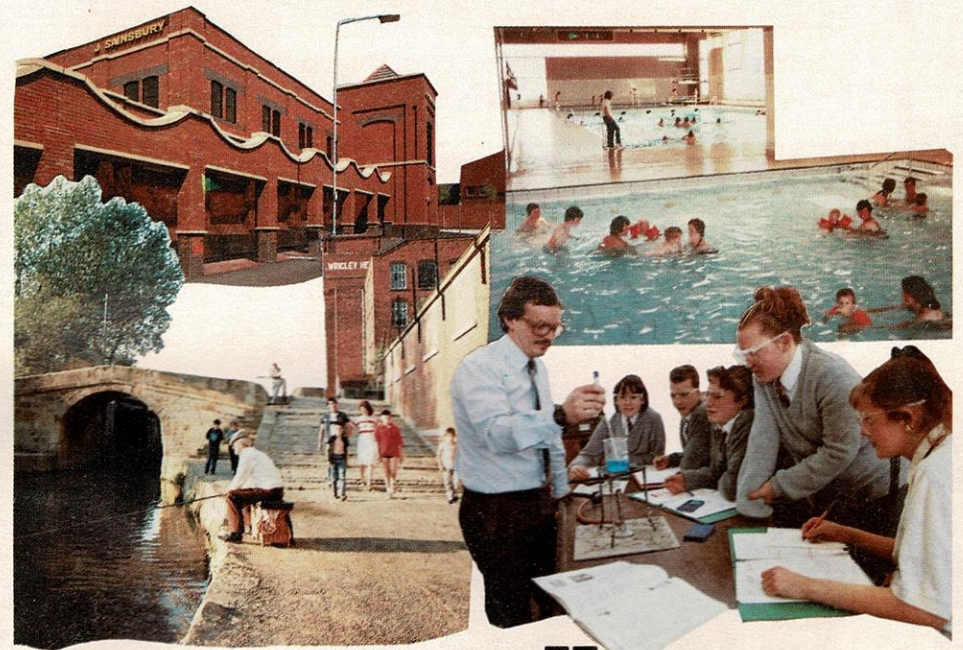


**WE'RE  
THE  
OTHER TEAM  
TRYING FOR OLDHAM!**

## OLDHAM METROPOLITAN BOROUGH COUNCIL

We're trying for Oldham economically, environmentally, socially, educationally, recreationally, culturally and in so many other ways. Just as Oldham Rugby is trying for all its supporters and the people of Oldham.

*Telephone inquiries about Council policies & activities to 061-678 4707.*



**Oldham**   
Metropolitan Borough

# PHOTOS

# ACTION



**ACTION PHOTOS COURTESY OF OLDHAM EVENING CHRONICLE  
PREMIERSHIP FINALS AT OLD TRAFFORD**



# SUPPORTERS CLUB

Welcome to all our friends and supporters on this, the first match of a new season, one which we hope will see the team promoted to the First Division.

We extend a warm welcome to all our friends and fellow supporters from London Crusaders who, I am sure, will be given a warm reception from all the Oldham fans.

This season will be tinged with sadness, following the sudden and tragic death of our colleague, Joe Gallagher, following the Player of the Year presentations in May. Joe was a great supporter and worker for the club and his efforts will be sadly missed. The Supporters Club are holding a collection at today's match in aid of Joe's dependants and so hope you will all give generously.

This year's club mascot is Miss Jennie Turner of Balfour Street, Oldham and we hope you will give her all your support during the coming season.

We will again be organising coaches to all away matches during the coming season, departing from the Social Club. Seats can be booked at the Club Shop, by phoning 6651832 (evening) or 624 4865 (during shop hours). Full details of away match coaches will appear in this column during the season.

We are organising a coach to the World Cup Final at Wembley on the 24th October, with seats priced at £12.00. The coach will depart at 8.00 a.m., returning directly after the match.

There are a limited number of match tickets priced £19.00 available for those booking a coach seat. Further details can be obtained from either the Club Shop or by phoning 665 1832.

Supporters Club Membership for the coming season is now available at £2.00, which allows discounted travel in all coaches to away matches plus a 5% discount on all purchases from the Club Shop. Don't delay, join now, obtain your form from the Club Shop or any Supporters Club Official. The Club Shop is now being manned on a voluntary basis by the Supporters Club Officials and is open on weekdays from 10.00 a.m. to 4.00 p.m. and Saturdays 10.00 a.m. to 12.00 noon in addition to match days. Prices of items available in the Club Shop are given below.

Membership for the Junior Reds can be taken out at the Club Shop or the Small Wooden Hut on the Ground on matchdays. The Junior Reds are now being run by S. Collinge, E. Crowther and J. Shaw.

More details about the Junior Reds in further programmes or contact any Supporters Club Committee Member.

## SHOP PRICE LIST

REPLICA SHIRTS (ADULTS)	£29.99	SHIRT NUMBERS	99P	99P
REPLICA SHIRTS (CHILDRENS)	£24.99	CAR ROLLER BLINDS		£5.00
REPLICA SHORTS (ADULTS)	£12.50	R.L. TRIOS CARD GAME		£1.00
REPLICA SHORTS (CHILDRENS)	£8.50	AUTOGRAPHED RUGBY BALLS		£10.50
LAMBSWOOL SWEATERS	£24.50	MINI RUGBY BALLS		£5.00
SOFT COLLAR SWEATSHIRTS	£12.50	HEADBANDS/WRISTBANDS		£0.75
QUARTERED SWEATSHIRTS	£12.50	GLOVES		£1.75
CREW NECK SWEATSHIRTS	£12.50	PEN/KEYRING SET		£1.50
HOODED SWEATSHIRTS	£12.50	PEN/NOTEBOOK SET		£1.60
POLO SHIRTS	£12.50	INDIVIDUAL PLAYERS T SHIRTS		£2.00
WHITE DRESS SHIRTS	£12.50	ON TOUR T SHIRTS		£4.00
SINGLE DUVET SETS	£15.00	BABIES DUNGAREES 6/12, 12/18, 18/24		£5.50
BERMUDA SHORTS	£3.50	BABIES SWEATSHIRTS 6/12, 12/18, 18/24		£4.80
TIES	£9.95	DUNGAREES/SWEATSHIRTS SET		£9.00
SPORTS BAGS	£5.99	BABIES POTTY		£3.50
BEDROOM BINS	£5.00	BABIES DRINKING CUP		£1.00
DESK TIDIES	£2.25	PUMP BAG		£2.00
TOOTHBRUSH HOLDERS	£2.00	BABIES ALL IN ONE SUIT		£4.50
SOAP TIDIES	£2.50	DRILL TOPS		£12.50
SCARVES (STRIPED)	£2.50	PENCE CASE		£1.50
SCARVES (SOLID)	£3.99	CLOCKS		£9.95
BOBBERS	£2.50	PENS		£0.25
FLAT CAPS	£2.00	CIGARETTE LIGHTERS		£2.00
BASEBALL CAPS	£2.99	CHILDRENS TRACKSUIT		£12.50
BEANY HATS	£2.00			
JEANANTS	£3.25/£2.75(SAME)			
SUN VISORS	£2.95			
RUGBY NUTS	£2.50			
MUGS	£1.50			
METAL BADGES	£1.50			
SEASON TICKET HOLDERS	£2.75			
BABY GROS	£1.50			
MINI KIT CAR HANGERS	£1.99			
LADIES BRIEFS	£3.50			
MIXED FIBRE SWEATERS	£10.00			
BATH TOWELS	£5.50			
CAR STICKERS	75P			
SEW-ON BADGES	£1.00			

## LEATHER GOODS