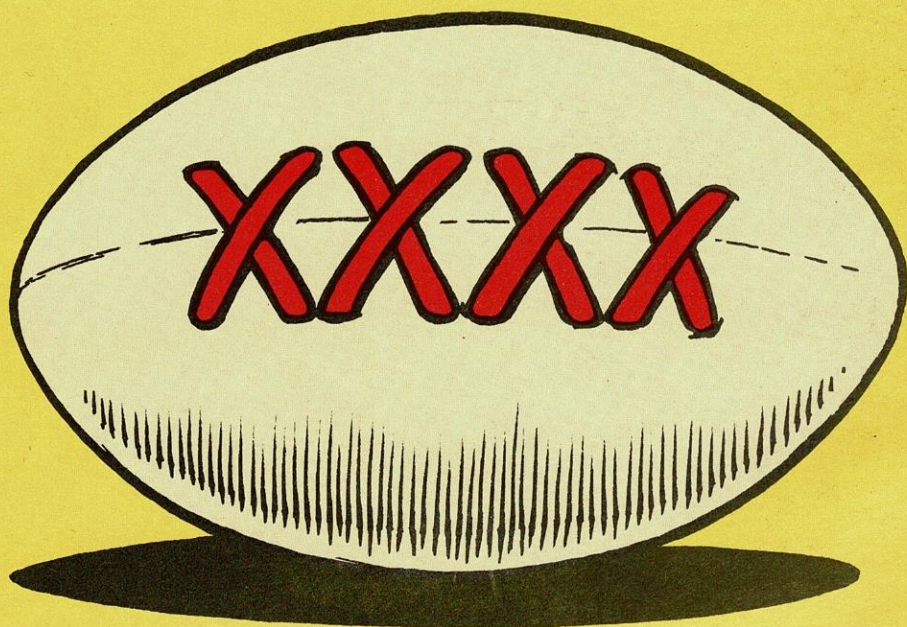


**OLDHAM RLFC
WOULDN'T GIVE A**



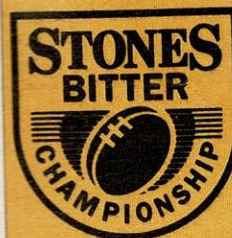
**FOR ANYTHING
ELSE.**

OLDHAM

CASTLEMAINE

XXXX

rugby league football club p.l.c.



Club Sponsor:
CASTLEMAINE
XXXX

Kit Sponsor:
MATCHWINNER
SPORTS LTD.

Man of the Match
Sponsor:
DRANSFIELD
COMMERCIALS

OLDHAM

v.

BRAMLEY

Sunday,

10th January, 1993

Kick-off 3.00 p.m.

OFFICIAL PROGRAMME **£1**



OFFICIAL MATCHDAY PROGRAMME

Healthier. Fitter.

Seton Healthcare Group plc, an established and growing force in the healthcare, sport and leisure markets, has an outstanding track record.

A policy of continual reinvestment and acquisition to develop and expand the product portfolio has ensured healthy sustained and profitable growth, making the Group fitter than ever for the challenges of the future.

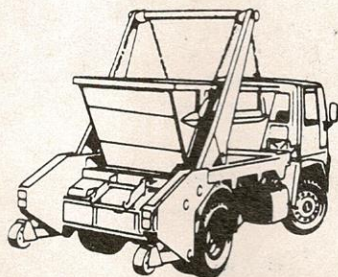
 Seton
Healthcare Group plc

SETON HEALTHCARE GROUP plc, TUBITON HOUSE, OLDHAM OL1 3HS, ENGLAND.
TELEPHONE: 061-652 2222. TELEX: 669956 (SETON G). FAX: 061-626 9090



HOLROYD Skip Hire Ltd.

**DIGGER & TRACKED
MACHINE HIRE**



**YOUR FIRST CHOICE IN
WASTE REMOVAL**

TELEPHONE:
061-624 1118 OR 061-624 1311
EVENINGS/FAX:
061-624 1171

LITTLE END FARM, MOORSIDE, OLDHAM.

SIMPLY THE BEST

No. 6 - JOSEPH LAWTON

Back in the early days of the "Northern Union", there was no more formidable half-back partnership than Oldham's own Arthur Lees and today's featured player JOE LAWTON.

A local lad, originating from Scouthead, Joe joined the club in 1893, having previously played junior rugby with Highmoor and Mayfield.

After a few seasons in the "A" team, he eventually broke into the senior squad when the legendary Harry Varley retired and immediately formed an excellent partnership with his aforementioned partner Arthur Lees.



In those Victorian times it was quite usual for half-backs to alternate between two positions, close to the scrum and so was the case the Oldham pair, however, more often than not Joe would play stand-off to Arthur at scrum-half.

Joe was a tricky player who was well able to bring out the best in the players around him and the Oldham threequarters flourished under his service. Indeed, winger Sam Williams topped the try scoring list for three consecutive seasons, for the whole Northern Union, in the midst of the Lawton/Lees era.

Perhaps Joe's most outstanding feature was his reliability. Starting with the first match of the 1897-98 season, against Morecambe on 4th September, 1897, Joe played in all first class matches for the club until the trip to Hull on 9th November 1901. This constituted a run of 134 consecutive games and included an ever-present for the four seasons 1897-98, 1898-89, 1899-1900 and 1900-01.

Joe eventually became club captain and at the turn of the century, was also captain of Lancashire.

His debut for Oldham in the Northern Union was on 23rd September, 1895 at Huddersfield and his final first team appearance was at Widnes on 28th January, 1905.

OLDHAM RUGBY LEAGUE FOOTBALL CLUB

The Pavilion, Watersheddings, Oldham
Telephone: 061-652 5244 and 061-624 4865

CLUB HONOURS

Rugby League Championship Play-off Winners:

1909-10, 1910-11, 1956-57

Runners-up:

1906-07, 1907-08, 1908-09, 1921-22, 1954-55

First Division Champions:

1904-05

Second Division Champions:

1963-64, 1981-82, 1987-88

Rugby League Challenge Cup Winners:

1898-99, 1924-25, 1926-27

Runners-up:

1906-07, 1911-1912, 1923-24, 1925-26

Lancashire Cup Winners:

1907-08, 1910-11, 1913-14, 1919-20, 1924-25, 1933-34, 1956-57, 1957-58, 1958-59

Runners-up:

1908-09, 1911-12, 1918-19, 1921-22, 1954-55, 1966-67, 1968-69, 1986-87, 1989-90

Lancashire Championship Winners:

1907-08, 1909-10, 1921-22, 1956-57, 1957-58

Runners-up:

1908-09, 1910-11, 1911-12, 1919-20, 1923-24, 1954-55

Lancashire Shield Winners:

1975-76, 1979-80

Colts Premiership Trophy:

1979-80

Second Division Premiership:

1987-88, 1989-90

Wigan Sevens Winners:

1991-92

Directors:

Jim Quinn (Chairman)
John Chadwick, Tom Patterson
Mike Winterbottom, Ian Carr
General Manager: T. Donovan

Hon Doctors:

Dr. I. Crook, Dr. D. Atherton

Dental Surgeon: Mr. N. Gibbison

Physiotherapists: Mr. N. Hodgson

Mr. A. Bonnelle (Adviser)

Assistant Physiotherapist:

Mr. J. Watkins

Hon. Secretary: Mr. F. Howarth, B.A.

Coach: Peter Tunks

Assistant Coach: Eric Fitzsimons

'A' Team Coach: John Prince

Youth Development Officer:

Ian McCorquodale

Hon. Consultant

Orthopaedic Surgeons: Mr. H. Thompson, Mr. D. Walker

Safety Officer: Roger Norris

Official Timekeeper: Mr. J. Roscoe

Club Records:

Record Victory: 67-6 v Liverpool City, April, 1959

Record Defeat: 11-67 by Hull K.R., September, 1978

Record Attendance: 28,000 v Huddersfield,

24 February, 1912

Record Receipts: £37,505.50 v Wigan,

5th October, 1989

Record Transfer Fee Paid: £70,000 to

Halifax for Tony Anderson, March 1990

Record Try Scorer: Reg Farrar, 49 tries,

1921-22 season

Record Goal Scorer: Bernard Ganley,

224 goals, 1957-58 season

Record Point Scorer: Bernard Ganley, 28 points

v Liverpool City, April 1959

First Game: 21st October, 1876 v Stalybridge

Highest Number of Points Scored: Bernard

Ganley, 2,881

Most Appearances: Joe Ferguson, 685

Most Tries: Pre 1900, Jack Hirst, 233

Since 1900, Alan Davies, 182

TODAYS SPONSORS

are

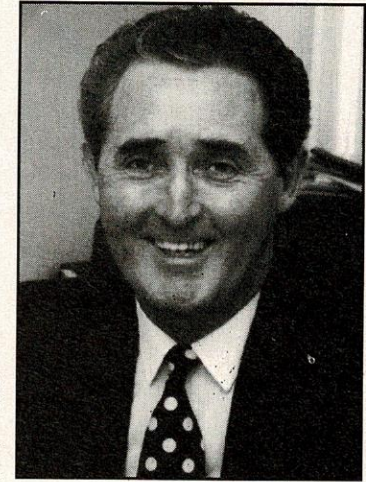
Club Sponsor:
CASTLEMAINE XXXX

Kit Sponsor:
MATCHWINNER SPORTS LTD.
Man of the Match Sponsor:
DRANSFIELD COMMERCIALS

FROM the BOARDROOM

by

CHAIRMAN JAMES QUINN



I can only assume, when writing these notes, that you will be reading them as scheduled on January 10th and not at some future date because the game was postponed.

Postponements have hit us hard in recent weeks, starting with the Bramley home game on December 20th and followed by the Christmas derby with Rochdale, which was called off on Boxing Day and again on the following Tuesday.

It meant that, at the turn of the year, we had received income from only one game in the previous eight weeks. That inevitably put a great burden on the club in its attempts to handle the cash flow and I would like to record the board's appreciation at the gesture of the Co-operative Bank in allowing us to marginally exceed our overdraft ceiling to enable us to meet a quarterly VAT bill which was due on January 1st.

It will be a great relief to the club when the big freeze relents and we can start to play some matches again, but the board is very mindful of the fact that the ensuing glut of fixtures will put a great burden on our loyal supporters.

Just after Christmas, and at a time of recession, is not the ideal time to ask supporters to pay through the turnstiles twice a week, but I am sure you will do your best to rally round the flag and give us your practical help in as many ways as possible.

If the weather shows signs of improving we could have as many as six or seven matches in January and five of them at home. It will be asking a lot of our fans to turn up in numbers every time, but the loyalty of the Roughyeds' regulars is well known throughout the Rugby League and I am sure that as many of you as possible will do everything possible to help us in the most practical way.

These very acute problems for club and supporters alike have arisen, in the main, as a direct consequence of having matches postponed and I often wonder how long it will be - if ever - before Rugby League takes the plunge and opts for summer rugby.

I must admit that I am now beginning to think seriously that the advantages of a season running from, say, March to October (inclusive), would far outweigh the disadvantages. We need only to look at what has happened in the past week or two to realise that rugby at the height of an English winter can be a very hazardous occupation, indeed. The uncertainty of whether matches will be played or not is no good to players, or coaches, clubs or spectators.

Fans are now more inclined than ever to stay indoors on a bad day as home comforts are improved and extended. At the hey-day of professional sport in this country - in the forties and fifties - there was little television, few people had central heating, fitted carpets for most people were a luxury and the home was generally not as comfortable as it is today.

Today we have televisions in almost every house, video recorders in many of them and now satellite television, ever on the increase. On the one hand a home today is usually a very warm and comfortable place to leave on a cold or wet winter's day. On the other hand it is even more inviting with the vast amount of sport on television.

I cannot help but think that there is a certain logic in considering that we are in the entertainment business (outdoors) and that the best time to put our goods in the shop window is when people want to get out into the fresh air - namely the summer time.

We are asking people to come out of the house when they might not want to, yet we are offering nothing to them at this time of year when they might not want to stay inside. Is that logical?

I know there are a lot of problems attached to summer rugby, but I don't think they are insurmountable and I am encouraged by the fact that many of the Oldham players much preferred playing in the South of France in August, 1991 when we were on tour down there than they do in the middle of the northern winter.

Think about it and answer this question honestly: would YOU prefer to watch rugby on a cold winter's day or in the pleasant atmosphere of a summer evening.

I know what my answer would be, but I must stress that this is my personal view and not necessarily that of the Oldham board.

**THIS PAGE IS SPONSORED BY JENKINSON & CO.,
ACCOUNTANTS, 6A LORD STREET, OLDHAM.
TEL: 061-624 2550**

IN TOUCH



TOP TEN TRY SCORERS:

1.	Shaun Edwards (Wigan)	26
2.	Greg Austin (Halifax)	18
3.	Paul Newlove (Featherstone R.)	17
	Alan Hunte (St. Helens)	17
	Ellery Hanley (Leeds)	17
6.	Phil Ford (Salford)	15
	Andy Mason (Wakefield T.)	15
	David Plange (Sheffield E.)	15
	Tony Smith (Castleford)	15
10.	Tea Ropati (St. Helens)	14

The 1992-93 top try scorer will receive £30 a try from Stones Bitter.

TOP TEN GOAL SCORERS (Including drop goals):

1.	Dean Marwood (Workington T.)	94
2.	Frano Botica (Wigan)	83
3.	John Wasylw (Keighley C.)	80
4.	Lee Crooks (Castleford)	66
5.	Gary Pearce (Ryedale-York)	64
6.	Paul Eastwood (Hull)	57
7.	Steve Gartland (Rochdale H.)	54
8.	Martin Pearson (Featherstone R.)	49
9.	Mark Aston (Sheffield E.)	46
10.	Paul Bishop (Halifax)	43
	Steve Maguire (Whitehaven)	43

The 1992-93 top goal kicker will receive £10 a goal from Stones Bitter.

TOP FIVE POINT SCORERS :

		Tries	Goals	Drop Goals	Points
1.	Dean Marwood (Workington T.)	10	94	0	228
2.	John Wasylw (Keighley C.)	9	80	0	196
	Frano Botica (Wigan)	8	81	2	196
4.	Steve Gartland (Rochdale H.)	12	53	1	155
5.	Paul Eastwood (Hull)	7	57	0	142

G. BARLOW & SONS LTD.

UNION STREET WEST, OLDHAM

Coach Proprietors and Funeral Directors

Tel: 624 4301/624 9116

**LITTLEMOOR
MILL CARPETS**
Littlemoor Lane
Oldham
(off Ripponden Road)

**FITTED
CARPET
SPECIALISTS**

Fitted by experts
within 7 days

Ring for
FREE QUOTATION
061-620 9866

Our BED CENTRE
always has a big
range in stock - call
in and see

A family business
that
looks after your
family's needs...

BEE FAMILY FINANCE

If you require credit for
*Household Goods
*Carpets
*Furniture
*TV's
*Car Repairs etc.
JUST CALL IN AT THE
BEE
FOR FRIENDLY ADVICE

*We can also arrange
credit
facilities for leading
fashion shops
in Oldham and
Manchester.

061-624 9908
21 Retiro Street,
Oldham

WRITTEN DETAILS ON REQUEST

OGDEN & PARTINGTON

CERTIFIED
ACCOUNTANT

D. J. TAYLOR, F.C.C.A.
15 Queen Street
Oldham OL1 1RD

Telephone:
061-624 1177

Your Hosts
Stephen and
Pauline Wilde

Welcome You to

The Clarence Hotel

Greenfield

Bar Meals -
Breakfasts and
Small Parties etc.

Telephone 045
7 872319

OPEN 6 DAYS
ROUGH'YEDS

become

SMART'YEDS

at

HEADHUNTERS

Professional Hairdressing
138-140 Ashton Road,
Oldham
Tel: 061-624 2984
also at

Moston and Bolton

The
Village
Manor
Restaurant

*

HIGH STREET
UPPERMILL
SADDLEWORTH

*

Telephone:
0457 873944
or
061-624 6056

Payne's
CONFECTIONERS

LTD

73 Lees Road
Oldham
624 7391

Bakery
Produce
Supplied
FRESH
DAILY

"Monty's"



NIGHTCLUB

OLDHAM'S
FOREMOST
FREEHOUSE

Meals always
available

17/21 Mumps,
Oldham
Tel: 061-620 9566

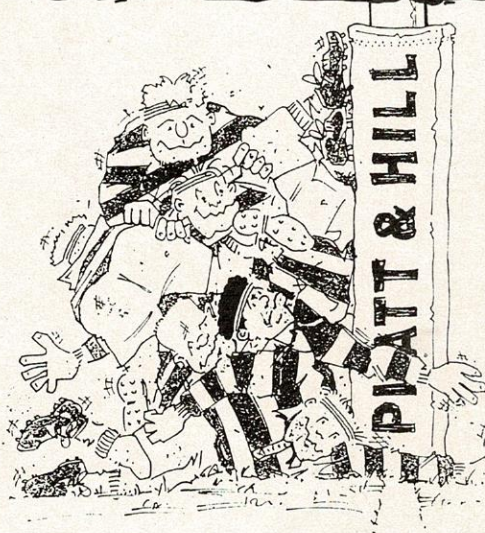
PROCARE by Medipost Limited

- For all your team's medical requirements, eg. first aid, sports supports, strappings & medical bags etc.
- Contact Procure on 061 678 0233 for a full catalogue



- Suppliers to all professional and amateur clubs

WE'VE CURED HEADACHES FOR THE ROUGHYEDS



Manufacturers of upholstery fillings for over a century, Platt & Hill make foam and fibre fillings of the highest quality right here in Oldham.

So reliable are our products, that Oldham RLFC have selected them to cushion the uprights of their goal posts.

In a way, you see, we've prevented headaches all round!

PLATT & HILL
FOAM AND FIBRE FILLINGS

FIBRE FILLINGS DIVISION:
Belgrave Mill, Keswick Avenue,
Oldham, Lancs OL8 2LZ.
Tel: 061-626 4638. Telex: 669550.
Fax: 061-627 3265.

COMMERCIAL CORNER

IS SPONSORED BY
THE SHEPHERDS BOY, HUDDERSFIELD ROAD, OLDHAM
BECKS BEERS & HOME COOKED FOOD

TWO'S COMPANY - FREEZE A CROWD!

If this is Sunday and it's Oldham versus Bramley and it's cold and the pitch is just about fit then probably this game is being played when it should be. If, however, this is Wednesday or Tuesday then this is a re-arranged fixture, the pitch is just about fit, it's cold but the weather is a bit better than it has been recently.

Now then! If it's Sunday and the weather is hot and sunny and you've had to take off your designer sunglasses in order to read this programme, which you only bought anyway to use as a fan due to the sweltering conditions, then the likelihood is that we've just got round to playing this game after months of postponements and your poor Programme Editor is even more fed up and confused than ever.

So, today we meet Bramley for the second time in five days, unless that is we didn't play last Wednesday which would mean that this is the first game against Bramley at home unless of course we didn't play this game when we should have and we rearranged last Wednesday's game to be played before this one.

Are you with us so far? Go on, admit it, you're confused aren't you?

Now, just imagine that you're writing these programme notes on Tuesday for a game to be played next Sunday against the same team that you play next Wednesday when you haven't a clue as to whether either game will actually take place as planned. Mind-boggling or what? Much more of this and you can pass me two pre-cooked chickens and lead me to the fence.

The one saving grace is that we didn't play our re-arranged game with Rochdale the other Tuesday because Tuesday is Dog Race Night and that could make for a very interesting evening. Imagine the confusion as Scott Ranson turns left instead of right at the bottom of the Pavilion steps and comes second in the 7.33 race out of Trap Four. Meanwhile out on the pitch a black and white dog, called Highland Laddie and wearing a red and white jacket, scores in the corner to give Oldham a four point lead but then is promptly sin-binned for celebrating by piddling on the goalpost. We'd like to see Roger Halstead write that lot up!

Anyway, enough of this frivolity and a very big thank you to everyone who has stuck with us and purchased a programme in spite of all the fixture chaos.

WHO YA GONNA CALL?

If there's something strange in your neighbourhood - then you probably live near Terry Donovan (only joking Terry). These days any ghostly mist is more likely to be freezing fog so who ya gonna call?

Radio Piccadilly says the game is definitely on, G.M.R. says the game is definitely off. Ceefax says no it's not probably on, so who ya gonna call? Clubcall, that's who. That nice young man Ged Mason will give you the up-to-the-minute information on everything connected with Oldham Rugby. Hear it first, hear it fast on Oldham Rugby Clubcall

0898 12 15 80

LET'S CALL IT A DRAW

If you don't have a match then you also don't have a half-time at which to make a half-time draw and so it was that the Shareholders Christmas Draw due to be made at half-time on Boxing Day became the Shareholders shortly after Christmas Draw due to be made at half-time last Wednesday should Wednesday's game have been postponed at half-time today. In either case many, many thanks to all who took part and our congratulations to all winners.

A similar fate befell the Christmas Hamper Draw but by now we should have found a winner for our Bumper Box of Goodies. Once again congratulations to the lucky winner and many thanks to all who took part in the Draw and a very special vote of thanks to everyone who helped in putting together such a magnificent prize and in organising the sale of tickets.

WIN AN OFFICIAL STONES BITTER/RFL 1993 CALENDAR



Kick the New Year off to a great start with the perfect record of top quality Rugby League action from Stones Bitter. The league sponsors are offering 20 fans the chance to win a glossy A2 calendar, featuring 12 superb shots and a host of facts and figures about the game.

All you have to do to enter the competition is circle the ten words in the wordsquare as listed below. The words appear forwards, backwards, and diagonally. The first 20 correct entries out of the hat will win a calendar.

STONES BITTER RUGBY LEAGUE BEER DYNAMIC QUALITY FLAVOUR WINNER MATCH

B F W S T O N E S S
E P O H E H A R T Y
E N F H U M S E W B
R L L T G N A T O G
B U A A A N B T N U
E C V E E H R I C R
L B O D L O Z B O H
L Z U Q U A L I T Y
Y A R C I M A N Y D
E W I N N E R T A K

Send your entry, together with your name, address and THE NAME OF TODAY'S HOME TEAM to Stones Bitter RFL Calendar Competition, Championship PR, Bridge House, 2 New Road, Lymm, Cheshire WA13 9DY.
Entries to be received no later than January 31 1993.



Name

Address

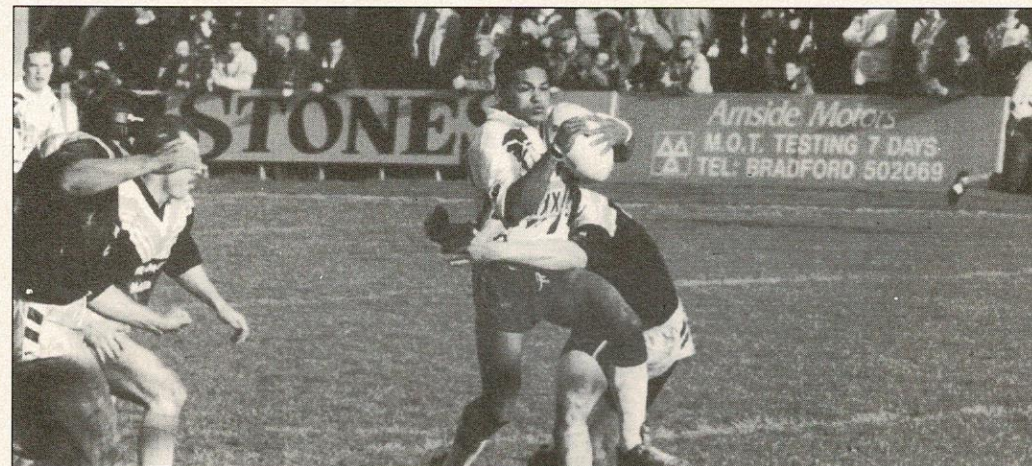
Home Team



A WATERSHEDDINGS WELCOME TO BRAMLEY



BRAMLEY v. OLDHAM 18th October, 1992



THIS PAGE IS SPONSORED BY JENKINSON & CO.,
ACCOUNTANTS, 6A LORD STREET, OLDHAM.

TODAY'S MAN in the MIDDLE

ROBERT CONNOLLY

IS

TODAY'S REFEREE

Robert comes from

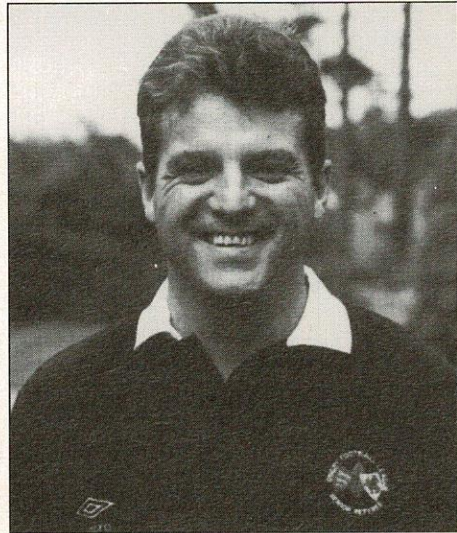
Wigan.

He was born on

30th September, 1959.

He became a Grade One referee

in 1990-91.





**BELIEVE IT OR NOT, RUGBY LEAGUE
AND RUGBY UNION DO AGREE
ON SOMETHING.**





mitre[®]


Official supplier of match and training balls to:

Rugby League 

Welsh Rugby Union 

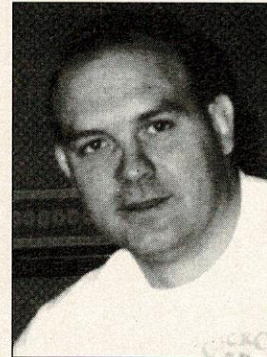
B.A.R.L.A. 

South African Rugby Union 

Irish Rugby Union 

Mitre Sports International Ltd., Bay Hall Works, Birkby, Huddersfield,
West Yorkshire HD1 5AJ. Tel: 0484 537488. Fax: 0484 530042.

TUNKS' TALKBACK



It's an unusual situation today as we welcome back Bramley for the second time in five days for another Second Division game. At the time of writing these notes I don't know the outcome of our encounter on Wednesday but with Featherstone Rovers win at Huddersfield on Tuesday night has forced them into a strong position and we must put together a winning run if we are to stay in touch. Bramley are a much stronger team these days under the guidance of Maurice Bamford.

Maurice was the coach at Leeds, when I was there as a player and for a time I was his skipper and so I know him well enough to realise that he will have a

trick or two up his sleeve for this afternoon. Maurice is a good coach and a Rugby League stalwart and he has brought Bramley from near oblivion and moulded them into a very good Second Division side.

After the chaos of postponed fixtures recently, it's great to be back to playing Rugby League, but I realise it's a costly business for supporters to turn up for two and three games in a week. The bottom line is - we need you!

If we are going to have First Division Rugby here next season, then we desperately need you to turn up and really get behind us.

We have the opportunity today and on Wednesday, when we are at home again to Rochdale Hornets, to pick up some valuable League points. Let's go for it!

Enjoy the game

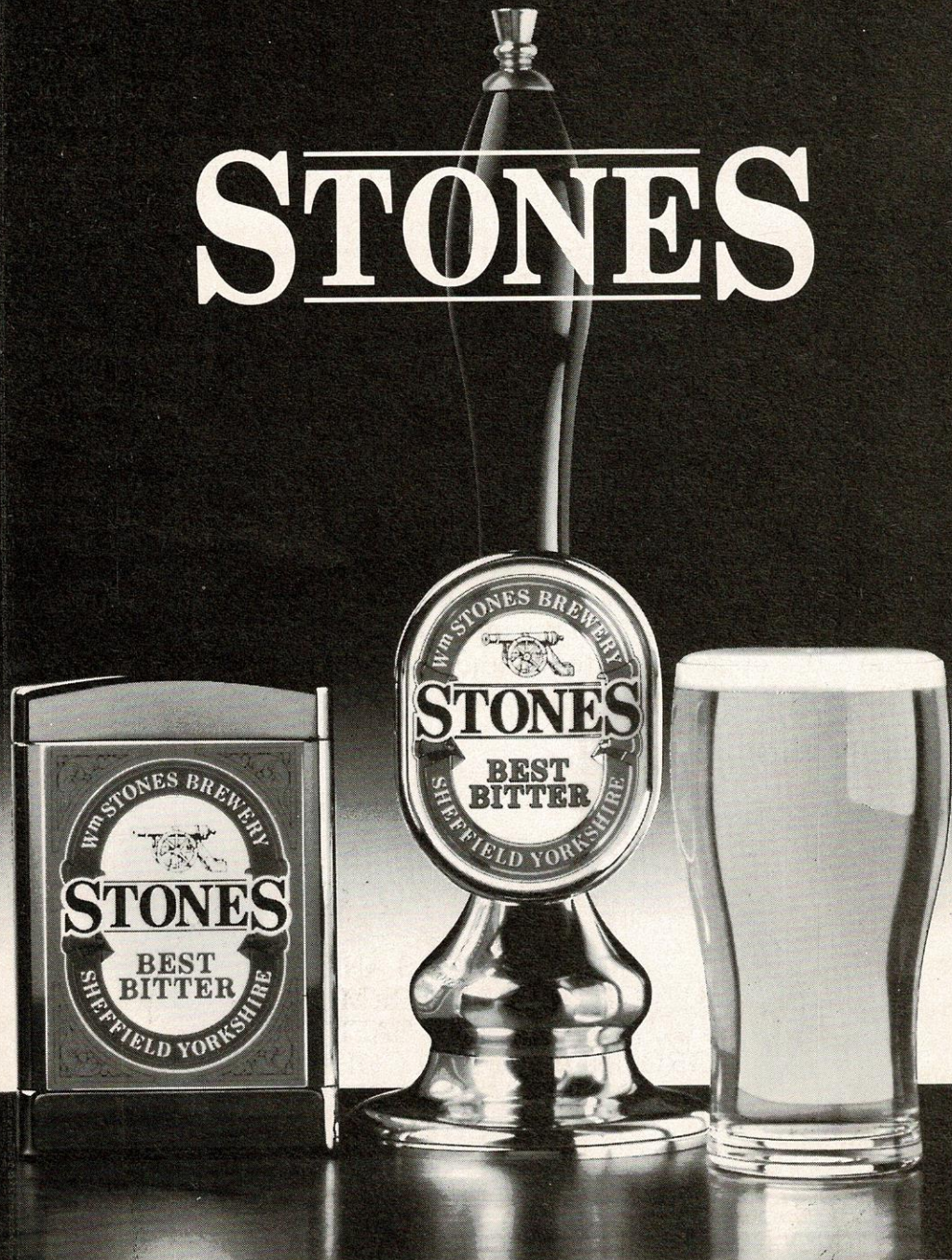
PETER TUNKS

IMPORTANT NOTICE

ALL MEMBERS AND
SUPPORTERS ARE REMINDED
THAT, UNDER THE SAFETY ON
GROUNDS ACT, ALCOHOL IS
BANNED FROM FOOTBALL
MATCHES

THIS PAGE IS SPONSORED BY
NORTHERN ROCK BUILDING SOCIETY, OLDHAM

STONES



THE MAJOR SPONSOR OF RUGBY LEAGUE.

PLAYER PROFILE

GARY CHRISTIE



Full Name: Gary Christie

Date of Birth: 23th January, 1972.

Birthplace: Birkenhead.

Height: 5 ft. 10 in.

Weight: 12 stone 4 pounds.

Favourite Drink: McDonalds milk shake.

Favourite Food: Mayonnaise.

Favourite T.V. Show: The Real World on M.T.V.

Favourite Music: Blues, Soul and Dance.

Hobbies: Playing Guitar and singing badly.

Previous Clubs: Widnes:- St. Maries and Tigers.

Biggest Influence on Career so far: Other players.

Favourite Player: Past - Eric Grothe, Present - Brad Fidler.

Favourite Ground: Anfield.

Most Difficult Opponent: Brian Laumatia (Junior Kiwis).

Most Memorable Match seen: Widnes v. Canberra Raiders (World Club Challenge).

Biggest Thrill: Playing for G.B. and touring New Zealand.

Biggest Disappointment: Being injured.

Personal Ambition: U21's - Full G.B. - Live and play on Gold Coast in Australia.

Person you would most like to meet: Elle McFerson.

Have you ever been mistaken for anyone famous: No

*THIS PAGE IS SPONSORED BY TANFIELD LTD.,
TOWBAR & TRAILER CENTRE, CHAMBER ROAD, OLDHAM.
TEL: 061-633 4872*

THE BIG CHILL

We've all heard of spectators being "frozen in their seats" but the recent Big Chill has gone too far! As the freeze continues to grip the country, Oldham RLFC are getting ready for their first game of 1993 - weather permitting of course!

With their games against the Rochdale Hornets and Swinton both cancelled due to frozen pitches, the team is raring to go. Rescheduled to play the Rochdale Hornets and Swinton over the next couple of weeks, it's going to be an XXXX-ceptionally busy month for Oldham and will keep the fans busy too!

Oldham hope to kick off to a good start for the New Year and continue their 1992 success. Good luck lads for '93 from Castlemaine XXXX.

A XXXX-MAS SPECIAL

Despite the weather, we still have our Player of the Month for December. The 'man with the can' (the XXXX prize cans) this month is Richard Russell. For our judge, Roger Halstead of the Oldham Chronicle, the club skipper was a natural choice, based on his outstanding performance in the game against Featherstone, in what was a fine performance by Oldham, although it resulted in a 24-20 defeat.

CASTLEMAINE
XXXXX

CASTLEMAINE



XXXXX



TEAM CHECK

SUNDAY, 10th JANUARY, 1993

OLDHAM TEAM CHANGES

1. WALLY GIBSON
2. SCOTT RANSON
3. GARY CHRISTIE
4. IVA ROPATI
5. STEVE WARBURTON
6. TOMMY MARTIN
7. STEVE KERRY
8. TINY SOLOMONA
9. RICHARD RUSSELL
10. MARK SHEALS
11. IAN SHERRATT
12. DAVID BRADBURY
13. RICHARD PACHNIUK
14. JAMIE BLOEM
15. JOE GRAZIANO

PENALTIES

1	2	3	4	5
6	7	8	9	10
11	12	13	14	15
16	17	18	19	20

SCRUMS

1	2	3	4	5
6	7	8	9	10
11	12	13	14	15
16	17	18	19	20

BRAMLEY TEAM CHANGES

1. DARREN COEN
2. KEITH HARKER
3. KEVIN BELL
4. DES DRUMMOND
5. NORMAN FRANCIS
6. TIM SHARP
7. MICHAEL TWIGG
8. ANDY MARSDEN
9. DEAN BLANKLEY
10. CHRIS WHITEHEAD
11. SONNY WHAKARAU
12. DAVE BUGG
13. PADDY LYONS
14. WAYNE FREEMAN
15. KEVIN RAYNE

PENALTIES

1	2	3	4	5
6	7	8	9	10
11	12	13	14	15
16	17	18	19	20

SCRUMS

1	2	3	4	5
6	7	8	9	10
11	12	13	14	15
16	17	18	19	20

Referee: R. CONNOLLY

Touch Judges: Mr. P. GOLDEN (Red Flag)
Mr. M. HAIG (Yellow Flag)

'It was certainly Richard's best display of the season', comments Roger. 'He did superbly well on attack and defence and skippered the team by example. Richard has also done well off the field' Roger notes, 'in helping to keep the enthusiasm and spirits high during a very frustrating month, when so many games have been called off. It was, however, largely for his contribution on the field that he has won the Player of the Month for December'.

Richard, who has been with Oldham for four seasons, is both a versatile and capable member of the team, having played as hooker, stand-off half and loose forward for the club. It is, however, as hooker that Roger believes that Richard is at his best.



Well done Richard - enjoy your prize of Castlemaine XXXX.

CASTLEMAINE
XXXXX



'A' TEAM ROUND UP

with COACH JOHN PRINCE

Hi. Welcome to 1993 and to everyone connected with Oldham RLFC. May I wish you a very successful and happy New Year.

As far as the Alliance side is concerned, it has been a very frustrating last five weeks, as first the rain and then the frost, has meant that we have not played a game in that period.

Hopefully, by the time you read these notes we will have secured a victory over Workington "A" in the First Round of the Alliance Challenge Cup and gained revenge for our Quarter Final defeat away, in late 1992.

However, we now have available for the Alliance side more players than at any time this season. Players with valuable first team experience, who are available after long-term injuries, which must be good news for our first team, as they face a very demanding period of games, also following postponed games.

We have always got to bear in mind the task of the Alliance side is to provide a set of players, capable of securing a first team place, when the opportunity or occasion arises.

Without doubt any club side is as good as its strength in depth. We, at long last, are beginning to reach that level which augured well for a second part of the season.

As I stated in the last programme, at the moment we are

in eighth position in the Second Division Alliance League, having played 10 games, winning five and I have not given up the possibility of promotion. However, with Salford undisputed, undefeated, League leaders, the battle for second place means that we have got to virtually win every game we have left this season.

I have never been a loser and I can assure you the players will be going all-out to achieve this goal and at the very least, achieve a place in the top four.

One thing is for certain, at the end of the season Oldham RLFC will be a lot stronger than at the end of 1992 season and that has got to be a plus.

Finally, to you very loyal Oldham supporters, I ask you to come and support your Alliance side. I know that this season in the Second Division means that a lot of games take place on a Saturday but your knowledge and support of the game is second to none. Come on and give the club and the lads your vocal support.

I would also like to remind you that Sponsorship of the "A" Team for home games is still available at £50 per game, which entitles the Sponsor to six Stand Tickets and, after the game, Buffet for six. A really great day out and helping to support your club. Match Ball Sponsorship is £25 and offers the same facilities for two people.

YOUNGERS ALLIANCE FIXTURES SECOND DIVISION 1992/93



Saturday, 29.8.92	Sheffield Eagles	H 20-33 (L)	1.00 p.m.
Saturday, 5.9.92	Carlisle	A 28-18 (W)	12.00 p.m.
Saturday, 12.9.92	Keighley	A 28-24 (W)	2.30 p.m.
Saturday, 19.9.92	Salford	H 10-31 (L)	1.00 p.m.
Friday, 25.9.92	Ryedale York	A 14-22 (L)	7.30 p.m.
Saturday 3.10.92	Carlisle (Lancs C.C. Shield)	H 26-20 (W)	1.00 p.m.
Friday 9.10.92	Leigh	H 16-19 (L)	7.30 p.m.
Friday 16.10.92	Wigan (LS 2)	H 4-34 (L)	7.30 p.m.
Friday, 29.10.92	Salford	A 6-42 (L)	7.30 p.m.
Friday, 6.11.92	Doncaster (Cup)	H 64-8 (W)	7.30 p.m.
Saturday, 14.11.92	Carlisle	H 40-12 (W)	1.00 p.m.
Friday, 20.11.92	Huddersfield	A 28-18 (W)	7.30 p.m.
Saturday, 28.11.92	Workington (Cup2)	A 16-26 (L)	
Saturday, 5.12.92	Hemel Hempstead	H 58-10 (W)	1.00 p.m.
Saturday, 12.12.92	Swinton	H	1.00 p.m.
Friday, 18.12.92	Bramley	A	7.30 p.m.
Saturday, 2.1.92	Swinton	H	1.30 p.m.
Saturday, 16.1.93	Hunslet	H	1.00 p.m.
Thursday, 23.1.93	Leigh	A	7.30 p.m.
Saturday, 6.2.93	Dewsbury	A	2.00 p.m.
Saturday, 13.2.93	Workington	H	1.00 p.m.
Saturday, 20.2.93	Hemel Hempstead	A	2.30 p.m.
Saturday, 27.2.93	Doncaster	H	1.00 p.m.
Saturday, 6.3.93	London Crusaders	H	1.00 p.m.
Saturday, 20.3.93	Workington	A	2.30 p.m.
Saturday, 27.3.93	Huddersfield	H	1.00 p.m.

THIS PAGE IS SPONSORED BY BILL AND BRENDA ROGERS

WRIGLEY CLAYDON & ARMSTRONGS SOLICITORS

Complete Legal and Financial
Service



PRUDENTIAL BUILDINGS
UNION STREET, OLDHAM



Tel: 061-624 6811 (Oldham)
or 0706 815712 (Shaw)
Fax: 061-624 3743

Licensed Credit Brokers

NEIL GIBBISON

B.D.S., V.U. Manc.

DENTAL SURGEON

36 Oldham Road
Uppermill
Oldham OL3 6HV

Telephone:
0457 872108

Cascade Ford Jct. 3 - M63

OPEN
EVERY
DAY

"we're only 30 minutes away"



Over **100 USED CARS**
in stock - always



DEALER

51 BARTON ROAD, URMSTON

Tel: 061-747 0544

OLDHAM R.L. SOCIAL CLUB SHEDDINGS

Tel: 061-624 0368

**LIVE
ENTERTAINMENT**
EVERY Wednesday, Friday
and Saturday
Last Orders 1.30 a.m.

FUNCTION ROOM
always available
- FREE to O.R.L.F.C.
shareholders
Ring for details

SKIPPER'S SPOT

with OLDHAM CAPTAIN
RICHARD RUSSELL

How was your Christmas? I hope you all had a terrific time.

Well now, what do we players get up to when all the holiday fixtures fall victim to the weather? Well, being as how it's the Festive Season, we all go out every night, get roaring drunk and bop till we drop.

Actually, that's not entirely true and this was our actual itinerary:

Thursday - Christmas Eve - Trained all morning.

Friday - Christmas Day - Off (Prepare for tomorrow's match).

Saturday - Boxing Day - In for match, match called off - Trained all morning.

Sunday - Off.

Monday - Trained evening.

Wednesday - Trained evening.

Thursday - New Years' Eve - Off (Prepare for tomorrow's match).

Friday - New Years' Day - In for match - Match called off - Trained all afternoon.

Saturday - Trained all morning.

Sunday - Ready for match - Match called off.

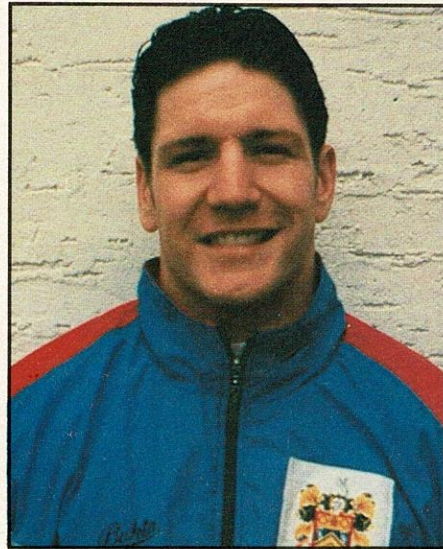
Monday - Trained evening.

Due to play Wednesday, then train Thursday evening and Saturday morning and that brings us up to today's game.

Bop till we drop indeed!

Enjoy the match

RICHARD RUSSELL



THIS PAGE IS SPONSORED BY
WILSON SPORTS TROPHIES, LEES ROAD, OLDHAM

HYDE PRECISION COMPONENTS LTD

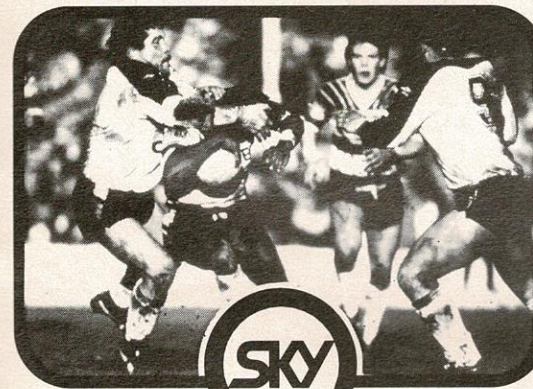
For all types of sub-contract machining
- especially C.N.C. turning and milling.

"The ones who have never knocked on"
Best wishes to Oldham for the season.

Tel: 061-368 3446

WAR GAMES

THE RUGBY LEAGUE CHAMPIONSHIP. LIVE ONLY ON SKY SPORTS.



From September 1st 1992, Sky Sports will be a subscription channel of British Sky Broadcasting Limited. Astra satellite receiving and decoding

SKY SPORTS

equipment is required to receive Sky Sports. Written details available from Sky Subscriber Services Limited, PO Box 43, Livingston, West Lothian EH54 7DJ.

Watch the battle for the Rugby League Championship live on Sky Sports every Friday evening.

You'll see all the action, you'll get all the in-depth analysis.

Because when it comes to covering all the sporting action, you'll find that Sky Sports is in a different league.

£15 OFF* ANY

SATELLITE SYSTEM
WHEN YOU REDEEM THIS VOUCHER AT
COLORVISION STORES NATIONWIDE.

*In cash goods or guarantees

COLORVISION

P L A Y E R S

Opponents	Date	Ven.	Res.	F.A.	Att.	1	2	3	4	5	6	7	8	9	10	11	12	13	14	15
LONDON C.	30.9.92	H	W	27-12	2,428	Ranson	Ranson	Cocker 2T	Repai	Maxwell	Martyn 5G	Devine	Sheals	Bates	McDermott	Meadows	Tupaea	Russell	Ober*	Salomona*
CARLISLE	6.9.92	H	W	38-14	2,292	Ranson	Ranson	Cocker 2T	Repai	Gumbs	Martyn 5G	Devine	Sheals	Parbhuk	McDermott	Meadows	Tupaea	Russell	Ober*	Salomona*
WARRINGTON Ladies Cup 1	13.9.92	H	W	33-20	4,041	Ranson	Ranson	Cocker	Repai 3T	Gumbs	Martyn 4C	Devine	Sheals	Parbhuk	McDermott	Meadows	Tupaea	Russell	Bradbury*	Jones*
HUDDESFIELD	20.9.92	A	W	28-24	2,896	Ranson	Ranson	Cocker	Repai	Gumbs	Martyn 4C	Devine	Sheals	Parbhuk	Salomona	Ober	Tupaea	Russell	Bradbury*	Jones*
LEIGH Ladies Cup 2	23.9.92	A	W	26-14	3,140	Ranson	Ranson	Cocker 2T	Repai 3T	Gumbs	Martyn 4C	Devine	Sheals	Parbhuk	McDermott	Ober	Tupaea	Russell	Bradbury	Salomona*
SWINTON	27.9.92	H	W	16-8	3,246	Ranson	Ranson	Cocker	Repai	Gumbs	Martyn 4C	Devine	Sheals	Parbhuk	McDermott	Ober	Tupaea	Russell	Bradbury	Salomona*
FEATHERSTONE R.	2.10.92	H	L	4-24	3,352	Gibson	Gibson	Cocker	Gibson	Bradbury	Warburton	Kerry 2G	Sherratt	Stephenson	Salomona	Jones	Tupaea	Ober	Meadows*	McDermott*
WIGAN Ladies Cup S.F.	6.10.92	A	L	8-48	9,000	Bradbury	Bradbury	Gibson	Cocker	Gumbs	Martyn	Kerry	Sherratt	Stephenson	Salomona	Jones	Tupaea	Russell	Ober	Parbhuk
ROCHDALE HORNETS	11.10.92	A	W	21-20	2,740	Tyrr	Tyrr	Cocker 2T	Repai	Gumbs	Russell	Kerry 4G	Salomona	Stephenson	Sheals	McDermott	Tupaea	Ober	Bradbury*	Meadows*
BRAMLEY	18.10.92	A	W	23-16	1,560	Tyrr	Tyrr	Cocker	Repai	Gumbs	Russell	Kerry 4G	Salomona	Stephenson	Sheals	Sherratt	Tupaea	Ober	Bradbury	Meadows*
SWINTON	1.11.92	H	W	56-6	2,721	Ranson	Ranson	Cocker	Repai	Gumbs	Russell	Kerry 4G	Salomona	Stephenson	Sheals	Sherratt	Tupaea	Ober	Bradbury	Meadows*
REGAL TROPHY RD. 1	1.11.92	H	L	22-40	4,393	Gibson	Higgins	Cocker 2T	Repai 3T	Gumbs	Russell	Kerry 4G	Salomona	Russell	Sheals	Sherratt	Ober	Bradbury	Tupaea*	Meadows*
CARLISLE	15.11.92	A	W	25-20	1,300	Tyrr 3G	Bradbury	Gumbs	Repai	Gumbs	Russell	Kerry 3G	Salomona	Russell	Sheals	Sherratt	Ober	Ober	Ober	Sherratt*
HUDDESFIELD	22.11.92	H	L	6-17	3,183	Tyrr	Ranson	Gumbs	Repai	Gumbs	Russell	Kerry 3G	Salomona	Russell	Sheals	Sherratt	Ober	Ober	Ober	Sherratt*
SWINTON	29.11.92	A	W	18-12	1,650	Gibson	Ranson	Cocker	Repai	Gumbs	Russell	Kerry 3G	Salomona	Russell	Sheals	Sherratt	Ober	Ober	Ober	Sherratt*
REGAL TROPHY RD. 2	5.12.92	A	L	20-24	3,298	Gibson	Ranson	Cocker	Repai 2T	Gumbs	Russell	Kerry 3G	Salomona	Russell	Sheals	Sherratt	Ober	Ober	Ober	Sherratt*
FEATHERSTONE R.	13.12.92	A	L	20-24	3,298	Gibson	Ranson	Cocker	Repai 2T	Gumbs	Russell	Kerry 3G	Salomona	Russell	Sheals	Sherratt	Ober	Ober	Ober	Sherratt*
BRAMLEY	20.12.92	H	L	20-24	3,298	Gibson	Ranson	Cocker	Repai 2T	Gumbs	Russell	Kerry 3G	Salomona	Russell	Sheals	Sherratt	Ober	Ober	Ober	Sherratt*
ROCHDALE HORNETS	26.12.92	H	L	20-24	3,298	Gibson	Ranson	Cocker	Repai 2T	Gumbs	Russell	Kerry 3G	Salomona	Russell	Sheals	Sherratt	Ober	Ober	Ober	Sherratt*
SWINTON	1.1.93	A	W	25-20	1,300	Tyrr 3G	Bradbury	Gumbs	Repai	Gumbs	Russell	Kerry 3G	Salomona	Russell	Sheals	Sherratt	Ober	Ober	Ober	Sherratt*
BRAMLEY	10.1.93	H	L	6-17	3,183	Tyrr	Ranson	Gumbs	Repai	Gumbs	Russell	Kerry 3G	Salomona	Russell	Sheals	Sherratt	Ober	Ober	Ober	Sherratt*
CARLISLE	17.1.93	A	W	18-12	1,650	Gibson	Ranson	Cocker	Repai	Gumbs	Russell	Kerry 3G	Salomona	Russell	Sheals	Sherratt	Ober	Ober	Ober	Sherratt*
ROCHDALE HORNETS	24.1.93	H	L	22-40	4,393	Gibson	Higgins	Cocker 2T	Repai 3T	Gumbs	Russell	Kerry 3G	Salomona	Russell	Sheals	Sherratt	Ober	Ober	Ober	Sherratt*
SILK CUT CHALL CUP RD. 1	30.1.93	A	L	20-24	3,298	Gibson	Ranson	Cocker	Repai 2T	Gumbs	Russell	Kerry 3G	Salomona	Russell	Sheals	Sherratt	Ober	Ober	Ober	Sherratt*
FEATHERSTONE R.	7.2.93	A	L	20-24	3,298	Gibson	Ranson	Cocker	Repai 2T	Gumbs	Russell	Kerry 3G	Salomona	Russell	Sheals	Sherratt	Ober	Ober	Ober	Sherratt*
SILK CUT CHALL CUP RD. 2	21.2.93	H	L	20-24	3,298	Gibson	Ranson	Cocker	Repai 2T	Gumbs	Russell	Kerry 3G	Salomona	Russell	Sheals	Sherratt	Ober	Ober	Ober	Sherratt*
CARLISLE	27.2.93	A	W	25-20	1,300	Tyrr 3G	Bradbury	Gumbs	Repai	Gumbs	Russell	Kerry 3G	Salomona	Russell	Sheals	Sherratt	Ober	Ober	Ober	Sherratt*
SILK CUT CHALL CUP RD. 3	28.2.93	A	L	20-24	3,298	Gibson	Ranson	Cocker	Repai 2T	Gumbs	Russell	Kerry 3G	Salomona	Russell	Sheals	Sherratt	Ober	Ober	Ober	Sherratt*
LONDON C.	7.3.93	A	W	18-12	1,650	Gibson	Ranson	Cocker	Repai	Gumbs	Russell	Kerry 3G	Salomona	Russell	Sheals	Sherratt	Ober	Ober	Ober	Sherratt*
HUDDESFIELD	14.3.93	H	L	22-40	4,393	Gibson	Higgins	Cocker 2T	Repai 3T	Gumbs	Russell	Kerry 3G	Salomona	Russell	Sheals	Sherratt	Ober	Ober	Ober	Sherratt*
FEATHERSTONE R.	21.3.93	H	L	22-40	4,393	Gibson	Higgins	Cocker 2T	Repai 3T	Gumbs	Russell	Kerry 3G	Salomona	Russell	Sheals	Sherratt	Ober	Ober	Ober	Sherratt*
LONDON C.	28.3.93	A	W	18-12	1,650	Gibson	Ranson	Cocker	Repai	Gumbs	Russell	Kerry 3G	Salomona	Russell	Sheals	Sherratt	Ober	Ober	Ober	Sherratt*
BRAMLEY	4.4.93	A	L	20-24	3,298	Gibson	Ranson	Cocker	Repai 2T	Gumbs	Russell	Kerry 3G	Salomona	Russell	Sheals	Sherratt	Ober	Ober	Ober	Sherratt*
ROCHDALE HORNETS	9.4.93	A	L	20-24	3,298	Gibson	Ranson	Cocker	Repai 2T	Gumbs	Russell	Kerry 3G	Salomona	Russell	Sheals	Sherratt	Ober	Ober	Ober	Sherratt*
HUDDESFIELD	12.4.93	H	L	20-24	3,298	Gibson	Ranson	Cocker	Repai 2T	Gumbs	Russell	Kerry 3G	Salomona	Russell	Sheals	Sherratt	Ober	Ober	Ober	Sherratt*
LONDON C.	18.4.93	A	L	20-24	3,298	Gibson	Ranson	Cocker	Repai 2T	Gumbs	Russell	Kerry 3G	Salomona	Russell	Sheals	Sherratt	Ober	Ober	Ober	Sherratt*

NEXT HOME GAME

Wednesday, 13.1.93

OLDHAM

v.

ROCHDALE HORNETS

K.O. 7.30 p.m.

1992 APPEARANCES & SCORERS
 AS AT 14th DECEMBER, 1992

NAME	APP	SUB	TRIES	GOALS	DROP GOALS	POINTS
SEAN TYRER	15	1	6	3	-	30
SCOTT RANSON	11	-	5	-	-	20
STUART COCKER	13	-	8	-	-	32
IVA ROPATI	13	-	8	-	-	32
JOHN MAXWELL	2	1	-	-	-	-
TOMMY MARTYN	9	-	1	24	3	55
SEAN DEVINE	6	-	4	3	1	23
MARK SHEALS	14	-	1	-	-	4
IAN BATES	1	-	-	-	-	-
BARRIE McDERMOTT	6	2	2	-	-	8
MARK MEADOWS	7	5	2	-	-	8
SHANE TUPAEA	9	2	-	-	-	-
RICHARD RUSSELL	14	-	3	-	-	12
BEN OLSEN	9	4	2	-	-	8
"TINY" SOLOMONA	11	4	1	-	-	4
HUGH GUMBS	11	-	4	-	-	16
RICHARD PACHNIUK	3	1	1	-	-	4
DAVID BRADBURY	10	3	2	-	-	8
PAUL JONES	3	4	-	-	-	-
WALLY GIBSON	11	-	6	-	-	24
STEVE WARBURTON	3	-	-	-	-	4
IAN SHERRATT	8	2	1	-	-	4
STEVE KERRY	10	-	2	32	3	75
DAVID STEPHENSON	6	-	-	-	-	-
GED BYRNE	1	1	-	-	-	-
JOHN HIGGENS	1	-	-	-	-	-
GARY CHRISTIE	1	1	-	-	-	-
JOE GRAZIANO	-	1	1	-	-	4

LEAGUE TABLE

STONES BITTER 2ND DIVISION 1992/93

TEAM	P	W	L	D	F	A	PTS	PTS DIFF
FEATHERSTONE R.	12	10	2	0	328	152	20	+176
OLDHAM	12	9	3	0	282	197	18	+85
ROCHDALE H.	13	9	4	0	296	241	18	+55
HUDDESFIELD	12	6	6	0	211	260	12	-49
LONDON C.	13	4	8	1	246	254	9	-8
BRAMLEY	12	4	7	1	207	242	9	-35
CARLISLE	11	3	6	2	192	265	8	-73
SWINTON	11	1	10	0	104	255	2	-151

THIS PAGE IS SPONSORED BY IRENE AND HELEN CALOW

BACK PAGES

by MICHAEL TURNER

First of all may I take this opportunity to wish a happy and prosperous New Year to everyone connected with the club (not forgetting our friends from Bramley) and hope the team can go on to achieve promotion to the First Division, preferably as champions.

As I write these notes on January 2nd it seems a very long time since our last match at Featherstone on December 13th (Christmas came early for Rovers that day). So today, I am looking back at some of the other seasons that have been hit badly by the weather.

Strangely enough there doesn't seem to be any disruption of more than two weeks from the formation of the Northern Union in 1895 right up to the Second World War. However, the winter of early 1947 was one of the most severe ever recorded and all the winter sports were greatly disorganised by the conditions. Oldham playing their final match on June 3rd at home to Liverpool Stanley.

On only one other occasion has the season ended in the month of June, this being in 1963 when today's visitors Bramley visited Watersheddings on June 1st and despite a 43-15 victory for the "Roughyeds" both clubs were relegated to the 2nd Division. In this season Oldham had no home match between December 15th and March 9th.

More recently in 1978-9, Oldham played only one game between December 26th and March 4th. This being the 1st round cup-tie against Ace Amateurs of Hull. Oldham were drawn at home but after many postponements the game was eventually played at Salford (Oldham winning 23-5).

PHOTO FEATURE Courtesy of the Oldham Evening Chronicle

The date is January 10th, 1982 and with a backlog of five postponed games Oldham R.L. came to an agreement with Oldham Athletic A.F.C. to play their home match with Batley on the then heated Boundary Park pitch. The action shows prop forward Adrian Alexander about to score a try as Oldham won 17-9.



I am currently researching for a book covering the complete playing records and history of OLDHAM RLFC. If anyone has any old material connected with the club (photos, programmes etc) I would be very interested in viewing such items. Please contact: Michael Turner, 158 Balfour Street, Oldham OL4 1NS. Tel: 061-620 6005

MIDASPORTS

NEW MARKET HALL,
OLDHAM
Tel: 061-678 6199

WARRINGTON STREET
ASHTON-UNDER-LYNE
Tel: 061-344 0550

RUGBY LEAGUE SPECIALISTS

FOR THE SUPPORTER

- NEW** GT. BRITAIN HOME & AWAY
- NEW** AUSTRALIA HOME & AWAY
- NEW** LEEDS & WIDNES HOME & AWAY
- NEW** WIGAN HOME & AWAY
- PLUS** REGULAR TEAMS INC. OLDHAM

AUSTRALIAN N.S.W. SHIRTS
PENRITH, NORTHS, BALMAIN, EASTS,
CANBERRA, NEWCASTLE, CANTERBURY,
BRISBANE, PARAMATTA **PLUS**
NEW QUEENSLAND STATE OF ORIGIN
SHIRTS

FOR THE PLAYER

HEADGUARDS
MOUTHGUARDS
SHOULDER PADS
FOREARM PROTECTORS
SHIRTS - SHORTS - SOCKS
NEOPRENE SUPPORTS
BOOTS - STUDS

FULL TEAM KITS AVAILABLE:
UMBRO - HALBRO - ELLGREN

WE ALSO STOCK A WIDE RANGE OF SPORTS CLOTHING, FOOTWEAR & EQUIPMENT



EVENING CHRONICLE

No. 1
for
local
NEWS
and
SPORT

QUIZ

HALF-TIME TEASERS

1. Who has the record number of appearances for Oldham?
2. Which Oldham player, played and scored in every match in season 1981-82?
3. Who were Oldham's opponents in the 1899 Challenge Cup Final?
4. Name the forward from the U.S.A. who played one match for Oldham in 1971-72.
5. Which team are nicknamed "The Villagers"?
6. What was the date and opposition for the first match at Watersheddings?
7. Who won the Man of the Match Award in the 1988 Second Division Premiership Final?
8. What was unusual about the Oldham v. Batley match on 10th January, 1982?
9. Which ex-Oldham player was the first winner of the Lance Todd Trophy in 1946?
10. What were Oldham's original club colours in the pre-Northern Union days?

Answers:

- | | |
|------------------|--|
| 1. Joe Ferguson. | 6. 28th September, 1889, versus Swinton. |
| 2. Mick Parrish. | 7. Des Foy. |
| 3. Hunslet. | 8. The game was played at Boundary Park. |
| 4. Sam Moore. | 9. Billy Stott. |
| 5. Bramley. | 10. Amber and Black. |

OLDHAM

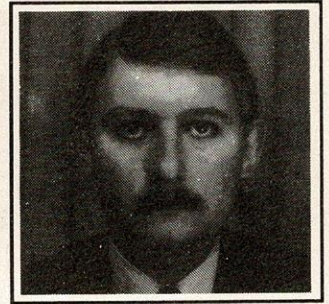
ClubCall

0898 12 15 80

**FIRST WITH ALL THE NEWS & VIEWS
 REPORTS 24 HOURS A DAY, 365 DAYS A YEAR
 UP-TO-THE-MINUTE INFORMATION
 FIXTURES, TICKET AVAILABILITY, FEATURES AND MATCH REPORTS
 ALL THE INSIDE STORIES FROM WATERSHEDDINGS - UPDATED DAILY**

Call cost 36p/minute cheap; 48p/minute other times. (Prices correct at time of going to press). Clubcall, 1-9 Downham Road, London N1

QUOTE - UNQUOTE



with CLUBCALLS GED MASON

So, its Bramley once again, as Maurice Bamford brings his side to Watersheddings for the second time in the last five days.

At this time of the New Year it's always a time when people look back at the previous year. The last 12 months has seen its up's and down's. The disappointments of missing out on promotion last season and being beaten at Old Trafford were the two main ones.

Progress though has been made both on and off the field. Tunksy has brought many new faces to Watersheddings and most people agree, a much-improved squad. The win over Warrington, earlier this season, showed the potential within the team.

Tiny Solomona summed up the many new faces in the team when he said: "Players should wear name tags".

What will the New Year hold for the Rough'yeds? Mark Sheals thinks promotion is no problem. "We'll win promotion, it's the Championship and a trip to Old Trafford we're looking for, anything else is second best".

1992 saw a new Chairman at the helm. John Chadwick stood down and Jim Quinn installed. As the new man he was very proud "Being chosen as Chairman meant a great deal to me, it proved to me that my fellow Directors had faith in me and I'm looking forward to a long and successful time as Chairman".

My own favourite quote of '92 came after the defeat by Huddersfield. After the game I asked Wally Gibson what Peter Tunks had said to the team. "He said he was going to kick some ass at training on Monday night".

The next action here at Watersheddings comes on Wednesday night when, hopefully, it's third time lucky, as we try to start the local derby with Rochdale Hornets.

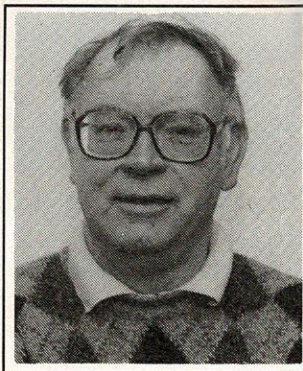
Coverage as always will be provided on Clubcall and all the way throughout the rest of the season until, hopefully, the final game of the season at Old Trafford.

Yours in Sport,

GED MASON

0898 12 15 80

ROGER HALSTEAD looks at PREVIOUS ENCOUNTERS



Oldham's win at Bramley earlier in the season was covered in the programme for the Oldham - Bramley game of December 20th, which was postponed on that date and rescheduled for last Wednesday - weather permitting.

In today's programme, therefore, I am covering the match between the two sides at McLaren Field on Sunday, February 17th, 1991 in the first round of the Silk Cut Challenge Cup.

Oldham won 38-6 to earn a second-round tilt against Workington Town at Derwent Park, a third-round home game against Salford and ultimately an appearance against Wigan at Burnden Park, Bolton in the semi-final.

These were in the days following the departure of Tony Barrow as coach and with John Fieldhouse installed as player-coach in a caretaker capacity until the end of the season.

The second successful run to the Wembley semi-final started with the win at Bramley and the teams lined up as follows:

BRAMLEY: Vincent, Wellbourne, Lister, Charles, Olpherts, Carroll, Hunter, Dickinson, Blankley, Hall, Connell, Edmondson, Jones. Subs: Fletcher and Green.

OLDHAM: Platt, Irving, Foy, Duane, Anderson, Clark, Ford, Donegan, Ruane, Fieldhouse, Round, McAlister, Russell. Subs: Cogger and Atkinson.

The scores were locked at 6-6 at half-time, but Oldham moved away to a comfortable victory in the second half in a match which attracted a crowd of 1,300 and was refereed by Mr. D. Campbell of Widnes.

Duncan Platt kicked five goals for Oldham and tries were scored by Andy Ruane (2), Des Foy, Charlie McAlister, Paul Round, Richard Irving and Mike Ford. Charles (try) and Carroll (goal) got the Bramley points.

There were many anxious faces on the terraces when jittery Oldham left the field for half-time with the scores level. The memories of many fans went back a couple of months to their team's shock 20-16 defeat at Batley in the second round of the Regal Trophy.

Oldham had other ideas, however, and they finally got their act together to totally dominate a second half in which they scored six tries, several of them the result of excellent handling, running and backing-up on a difficult surface.

The Oldham handling, wretched in the first half, improved beyond all recognition in the second period and the forwards did the basics up front to set up the tries for Foy, McAlister and Round.

With the pressure off Oldham and Bramley ground into submission, the ball was then thrown around successfully with gay abandon and beautifully-contrived tries were scored by Irving, Foy and Ruane after exciting combination play by forwards and threequarters alike.

Fieldhouse took the man-of-the-match award on the strength of his tireless work rate in attack and defence and the number of times his second-half drives and short passes split the Bramley defence.

Keith Atkinson, a substitute, followed Fieldhouse's lead in forming the bridgehead from which halves Ford and Clark or hooker Ruane got the ball moving.

Platt, Foy and Round also gave accomplished performances with Platt and Ruane running Fieldhouse close for the individual award.

Platt's contribution as an attacking full-back was an outstanding one, and, unlike most players, he was consistent for the 80 minutes, producing many long breaks through the centre position.



**WE'RE
THE
OTHER TEAM
TRYING FOR OLDHAM!**

OLDHAM METROPOLITAN BOROUGH COUNCIL

We're trying for Oldham economically, environmentally, socially, educationally, recreationally, culturally and in so many other ways. Just as Oldham Rugby is trying for all its supporters and the people of Oldham.

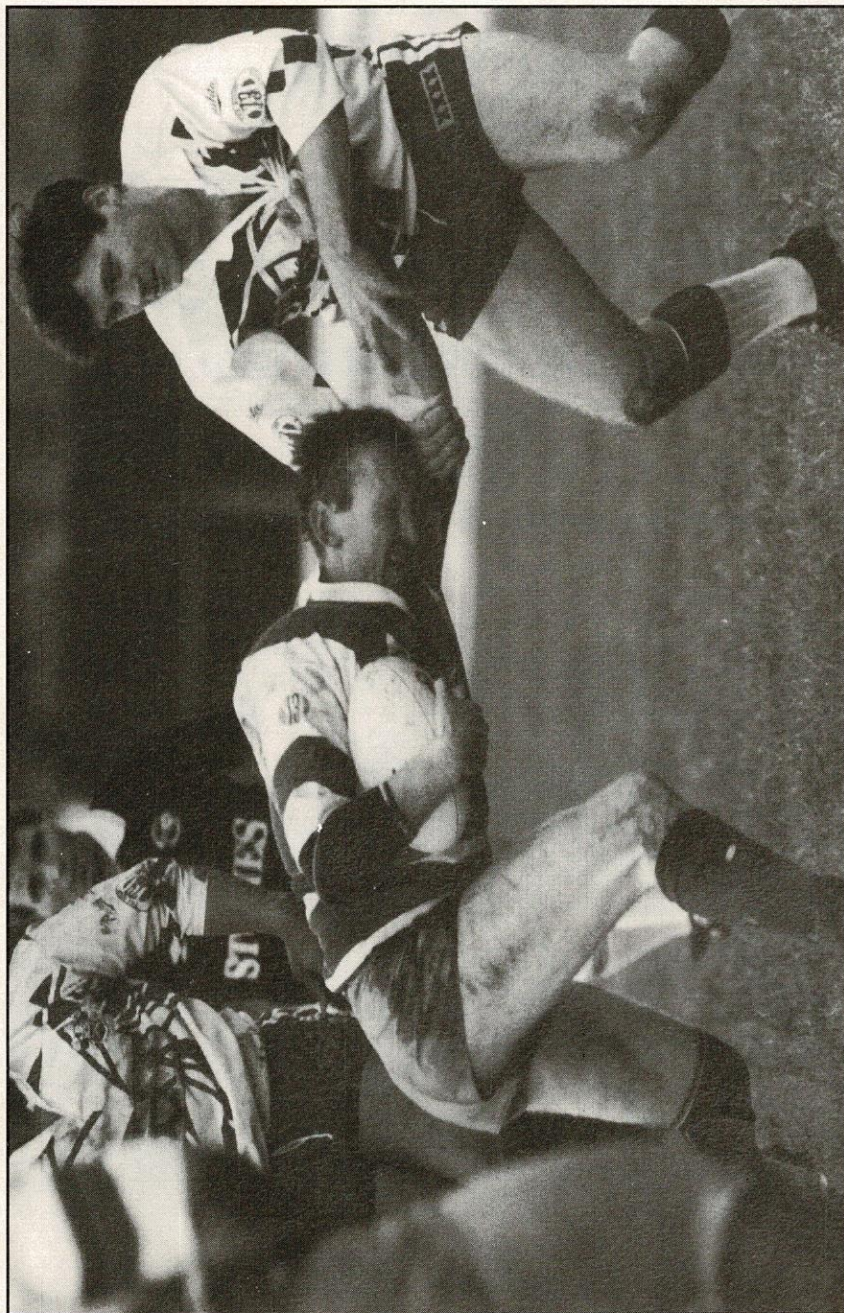
Telephone inquiries about Council policies & activities to 061-678 4707.



OLDHAM 
Metropolitan Borough 

PHOTOS

ACTION



Ged Byrne gets to grips with a Border Raider

Photo: Courtesy of Oldham Evening Chronicle

SUPPORTERS CLUB

Today we extend a warm welcome to all our friends and supporters from Bramley.

MEMBERSHIP

Supporters Club Membership is still open at just £2.00 for the season. All members enjoy a 5% discount in the Club Shop plus discounted travel on all Supporters Club Coaches to away games. Further information from the Club Shop or on **665 1832**.

JUNIOR REDS

Membership of the Junior Reds is still open at just £2.00 for the season, with the same discounts as adult membership.

The second Newsletter has now been distributed to all Junior Members and we have received many favourable comments from the first issue.

If you have any items of interest or require further information, contact Sue on **681 3397**.

CLUB SHOP

Now in stock - New Replica Shirts Home and Away at £29.99 (adult sizes) £24.99 (childrens sizes) plus Track Suits at £53.99 (adult) £35.00 (children) and Matchday Jackets £44.99, Torino Run Out Tops at £35.00 to order. We also have a supply of the old-style shirts at only £16.00.

Other various items from the Club Shop have been parcelled together as ideal presents.

Full details can be obtained from the staff in the Club Shop.

AWAY MATCH

Our next away match is at Carlisle on Sunday, 17th January. Seats can be booked in the Club Shop or phone **665 1832**.

SHOP PRICE LIST

REPLICA SHIRTS (ADULTS)	£29.99	SHIRT NUMBERS	99P 99P
REPLICA SHIRTS (CHILDRENS)	£24.99	CAR ROLLER BLINDS	£5.00
REPLICA SHORTS (ADULTS)	£12.50	R.L. TRIOS CARD GAME	£1.00
REPLICA SHORTS (CHILDRENS)	£8.50	AUTOGRAPHED RUGBY BALLS	£10.50 £10.50
LAMBSWOOL SWEATERS	£24.50 £24.50	MINI RUGBY BALLS	£5.00 £5.00
SOFT COLLAR SWEATSHIRTS	£12.50	HEADBANDS/WRISTBANDS	£0.75
QUARTERED SWEATSHIRTS	£12.50	GLOVES	£1.75 £1.75
CREW NECK SWEATSHIRTS	£12.50	PEN/KEYRING SET	£1.50 £1.50
HOODED SWEATSHIRTS	£12.50	PEN/NOTEBOOK SET	£1.60 £1.60
POLO SHIRTS	£12.50	INDIVIDUAL PLAYERS T SHIRTS	£2.00
WHITE DRESS SHIRTS	£12.50	ON-TOUR T SHIRTS	£4.00
SINGLE DUVET SETS	£15.00	BABIES DUNGAREES 6/12, 12/18, 18/24	£5.50
BERMUDA SHORTS	£3.50	BABIES SWEATSHIRTS 6/12, 12/18, 18/24	£4.50
TIES	£9.95	DUNGAREES/SWEATSHIRTS SET	£9.00
SPORTS BAGS	£5.99 £5.99	BABIES POTTY	£3.50
BEDROOM BINS	£5.00 £5.00	BABIES DRINKING CUP	£1.00
DESK TIDIES	£2.25 £2.25	PUMP BAG	£2.00
TOOTHBRUSH HOLDERS	£0.50	BABIES ALL-IN-ONE SUIT	£4.50
SOAP TIDIES	£0.50	DRILL TOPS	£12.50
SCARVES (STRIPED)	£2.50 £2.50	PENCIL CASE	£1.50 £1.50
SCARVES (JAGUARD)	£3.99 £3.99	CLOCKS	£9.95
BOBHATS	£2.50 £2.50	PENS	£0.25
FLAT CAPS	£2.00 £2.00	CIGARETTE LIGHTERS	£2.00
BASEBALL CAPS	£2.99 £2.99	CHILDRENS TRACKSUIT	£12.50
BEANY HATS	£2.00		
PENNANTS	£3.25/£2.75(SAME)		
SUN VISORS	£2.95 £2.95		
RUGBY NUTS	£2.50		
MUGS	£1.50 £1.50		
METAL BADGES	£1.50		
SEASON TICKET HOLDERS	£2.75 £2.75		
BABY GROS	£1.50		
MINI KIT CAR HANGERS	£1.99		
LADIES BRIEFS	£3.50		
MIXED FIBRE SWEATERS	£10.00		
BATH TOWELS	£5.50		
CAR STICKERS	75P £1.00		
SEW-ON BADGES	£1.00 £1.00		

LEATHER GOODS

MANICURE SET	£2.25
TIDY SET	£1.99
HANDYMAN SET	£2.50
PENSION BOOK HOLDER	£1.75
KEY CASE	£1.50
BOOKMARK	£0.75
KEYRING	£1.00
COMB IN CASE	£1.25
CHILDRENS PURSE	£1.50