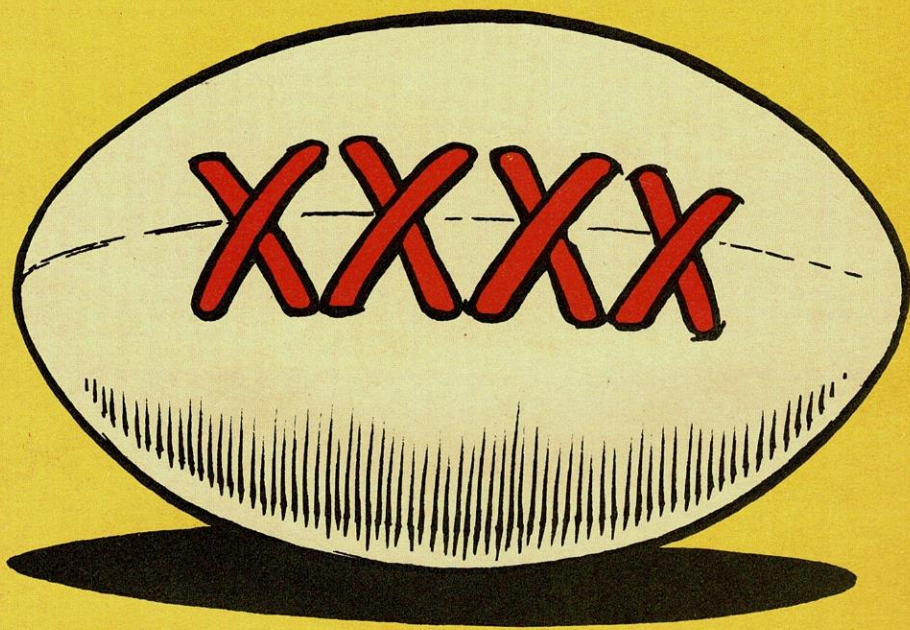


**OLDHAM RLFC
WOULDN'T GIVE A**



**FOR ANYTHING
ELSE.**

OLDHAM

CASTLEMAINE

XXXXX

rugby league football club p.l.c.



Club Sponsor:

CASTLEMAINE XXXX

Man of the Match Sponsors:

OLDHAM EVENING

CHRONICLE

Match Ball Sponsors:

CAPE BUILDERS

OLDHAM

v.

LONDON CRUSADERS

Sunday, 21st March, 1993

Kick-off 3.00 p.m.

OFFICIAL
PROGRAMME

£1



OFFICIAL MATCHDAY PROGRAMME

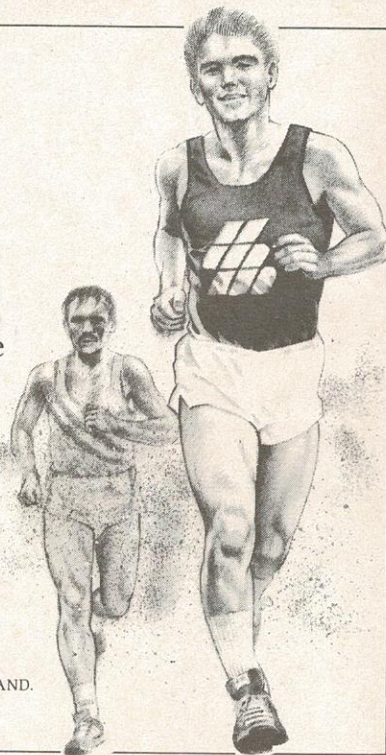
Healthier. Fitter.

Seton Healthcare Group plc, an established and growing force in the healthcare, sport and leisure markets, has an outstanding track record.

A policy of continual reinvestment and acquisition to develop and expand the product portfolio has ensured healthy sustained and profitable growth, making the Group fitter than ever for the challenges of the future.

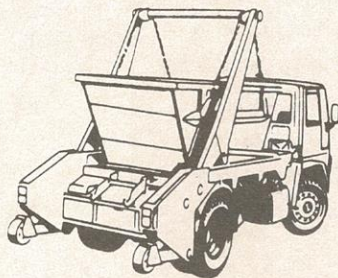


SETON HEALTHCARE GROUP plc, TUBITON HOUSE, OLDHAM OL1 3HS, ENGLAND.
TELEPHONE: 061-652 2222. TELEX: 669956 (SETON G). FAX: 061-626 9090



HOLROYD Skip Hire Ltd.

**DIGGER & TRACKED
MACHINE HIRE**



**YOUR FIRST CHOICE IN
WASTE REMOVAL**

TELEPHONE:

061-624 1118 OR 061-624 1311

EVENINGS/FAX:

061-624 1171

LITTLE END FARM, MOORSIDE, OLDHAM.

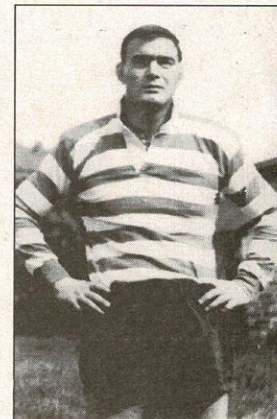
SIMPLY THE BEST

No. 13 - KEN WILSON

Today we feature the long-serving prop forward from the 1960's and early 1970's, KEN WILSON.

Ken or "Tug" Wilson, as he was often known, came to Oldham in August 1963. He had previously played Rugby Union in the R.A.F. and had represented his native Gloucester at County level and won one full International Cap for England against France at Twickenham.

Ken was also quite a successful amateur boxer and represented the R.A.F. at heavyweight, but a hand injury curtailed his career in the ring and he then turned all his attentions to Rugby.



His debut for Oldham was in the first League match of the 1963-64 season, at Rochdale on 24th August, 1963 and for the next 10 years, he would be the cornerstone in the Oldham pack.

As all Rugby League folk know, the prop forward position is not the most glamorous in the team, but it is often the grafting work of these players that paves the way for the half-backs and three-quarters. Such a hard-working forward was Ken Wilson, who never tired of taking on the opposing packmen, whether it was by taking the ball up to the waiting defenders or by providing his own crunching tackles on the opposition.

Also back in those days the scrummaging laws were such that a good prop and hooker partnership could often monopolise possession of the ball for their team and in Ken Wilson and Kevin Taylor, Oldham had a pair whose ball-winning skills were the envy of the League.

Like so many Oldham players, Ken's big regret was not representing the team at Wembley, yet he got nearer than most, being a member of the side that took Hull K.R. to two replays in 1964, in the Semi-Final.

All in all, Ken played in over 320 games for Oldham, his last appearance being against Australia on 19th October, 1973 and Oldham played a Testimonial Match for Ken, against an England XIII on 22nd April, 1975.

OLDHAM RUGBY LEAGUE FOOTBALL CLUB

The Pavilion, Watersheddings, Oldham
Telephone: 061-652 5244 and 061-624 4865

CLUB HONOURS

Rugby League Championship Play-off Winners:

1909-10, 1910-11, 1956-57

Runners-up:

1906-07, 1907-08, 1908-09, 1921-22, 1954-55

First Division Champions:

1904-05

Second Division Champions:

1963-64, 1981-82, 1987-88

Rugby League Challenge Cup Winners:

1898-99, 1924-25, 1926-27

Runners-up:

1906-07, 1911-1912, 1923-24, 1925-26

Lancashire Cup Winners:

1907-08, 1910-11, 1913-14, 1919-20, 1924-25, 1933-34, 1956-57, 1957-58, 1958-59

Runners-up:

1908-09, 1911-12, 1918-19, 1921-22, 1954-55, 1966-67, 1968-69, 1986-87, 1989-90

Lancashire Championship Winners:

1907-08, 1909-10, 1921-22, 1956-57, 1957-58

Runners-up:

1908-09, 1910-11, 1911-12, 1919-20, 1923-24, 1954-55

Lancashire Shield Winners:

1975-76, 1979-80

Colts Premiership Trophy:

1979-80

Second Division Premiership:

1987-88, 1989-90

Wigan Sevens Winners:

1991-92

Directors:

Jim Quinn (Chairman)
John Chadwick, Tom Patterson
Mike Winterbottom, Ian Carr

General Manager: T. Donovan

Hon Doctors:

Dr. I. Crook, Dr. D. Atherton

Dental Surgeon: Mr. N. Gibbison

Physiotherapists: Mr. N. Hodgson

Mr. A. Bonnelle (Adviser)

Assistant Physiotherapist:

Mr. J. Watkins

Hon. Secretary: Mr. F. Howarth, B.A.

Coach: Peter Tunks

Assistant Coach: Eric Fitzsimons

'A' Team Coach: John Prince

Youth Development Officer:

Ian McCorquodale

Hon. Consultant

Orthopaedic Surgeons: Mr. H. Thompson, Mr. D. Walker

Safety Officer: Roger Norris

Official Timekeeper: Mr. J. Roscoe

Club Records:

Record Victory: 67-6 v Liverpool City, April, 1959

Record Defeat: 11-67 by Hull K.R., September,

1978

Record Attendance: 28,000 v Huddersfield,

24 February, 1912

Record Receipts: £37,505.50 v Wigan,

5th October, 1989

Record Transfer Fee Paid: £70,000 to

Hallifax for Tony Anderson, March 1990

Record Try Scorer: Reg Farrar, 49 tries,

1921-22 season

Record Goal Scorer: Bernard Ganley,

224 goals, 1957-58 season

Record Point Scorer: Bernard Ganley, 28 points

v Liverpool City, April 1959

First Game: 21st October, 1876 v Stalybridge

Highest Number of Points Scored: Bernard

Ganley, 2,881

Most Appearances: Joe Ferguson, 685

Most Tries: Pre 1900, Jack Hirst, 233

Since 1900, Alan Davies, 182

TODAYS SPONSORS

are

Club Sponsor:

CASTLEMAINE XXXX

Man of the Match Sponsors:

OLDHAM EVENING CHRONICLE

Match Ball Sponsors:

CAPE BUILDERS

FROM the BOARDROOM

by

CHAIRMAN JAMES QUINN



The Oldham club voted for the return of two divisions, at last week's meeting in Leeds, because we are convinced it is the way forward. I know a lot has been written about the "relegation" to the Second Division of the Alliance of the three teams which will finish bottom of the Third Division at the end of this season.

The view of the Oldham Board is that, in future, new clubs coming into Rugby League should serve their apprenticeship in the Alliance, where they can lay down some roots, sort out their funding and earn their elevation to the Rugby League proper, by proving they can be successful over a number of years in Alliance Football. A good example of this is the Hemel Hempstead club. Although they are outside the traditional League area, they are working hard to establish the game at grass-roots level in their locality. They have got the game going in schools and on our last visit to their club, I know our "A" team coach, John Prince, was very impressed indeed, not only at the progress they had made on the field (they are now regularly winning matches) but at the obvious hard work that had been done in upgrading the social and dressing-room facilities.

Hopefully, there may come a day when Hemel Hempstead are ready to step up into the senior Rugby League - on merit and with a club that is well-established. That has to be the way forward.

The only exception to that would be in the event of an extremely wealthy businessman or syndicate of businessmen coming up with enough money to buy a good team and to find a stadium with top-class facilities. The chances of that happening are remote, but it must not be ruled out.

What must be ruled out is the admission of new clubs which have little or no chance of making the grade and which exist on funds from headquarters, while doing little for themselves.

Just to change the subject, I was delighted to learn that the Rugby League wanted to set up a small sub-committee to investigate the pros and cons of summer football. It will be chaired by Bradford's Chris Caisley and will include Gary Hetherington of Sheffield Eagles and yours truly.

A few weeks ago, everything seemed to go quiet on the summer-rugby front, but it appears that somebody must have been interested, because the League now wants us to delve into all aspects of what would be involved in a switch of seasons.

As far as I know, this will be the first serious investigation into the possibilities of a season running, say, from mid-March to mid-October, although it might have to include all March and all October, in order to accommodate all the matches and competitions.

If that were the case, we would have an off-season of November, December, January and February and we would be playing in better weather, with all the obvious advantages that brings.

I have no doubt that the sub-committee will unearth a lot of facts and figures that back a switch in seasons and some that don't, but I have always held the view that the advantages of playing outside the winter's worst months, would heavily outweigh the disadvantages.

*THIS PAGE IS SPONSORED BY JENKINSON & CO.,
ACCOUNTANTS, 6A LORD STREET, OLDHAM.
TEL: 061-624 2550*

IN TOUCH



STEVE GARTLAND

Steve Gartland, of Rochdale Hornets, broke a club record when he took his points total for the season to 250, with five goals and two tries in the 30-14 Second Division win at Bramley. His total is made up of 16 tries and 94 goals, including two drop goals.

Steve Turner set the old record in 1988-89, with 243 points from 104 goals, including a drop goal and nine tries. Usually a stand-off, but also playing at wing, centre and loose-forward, Turner played in 31 matches, including three as a substitute.

Gartland has appeared in all 28 of Rochdale's matches this season, either at stand-off or scrum-half. He has failed to score in only one match and his best match tally was 22 points from seven goals and two tries in a 62-22 home defeat of Bramley.

A former Oldham St. Annes amateur, Gartland signed for Rochdale in August, 1990 and made a try-scoring debut in a 20-34 Stones Bitter Championship home defeat by Leeds on 19th March, 1991.

Before the start of the season, Gartland had totalled 44 tries in 25 matches, including two substitute appearances.

DONCASTER RECORD

Doncaster are one short of equalling a club record eight successive League victories. Their last Third Division defeat was 31-10 at Keighley Cougars on 13th January.

They set the record at the start of 1988-89, by winning their first eight matches of the old Second Division.

SALFORD RECORD DEFEAT

Salford conceded a club record score when they lost 70-6 at Wigan, who scored 12 tries in the Stones Bitter Championship. The previous record was Castleford's 10-try 65-0 Stones Bitter Championship home win, on 1st April, 1990.

TRY SCORING RUN

Vince Gribbin, of Whitehaven, has scored at least one try in nine successive matches, as follows:

1 - 1 - 1 - 1 - 1 - 5 - 2 - 4 - 1.

Mark Riley, of London Crusaders, has scored at least one try in six successive matches, as follows:

3 - 1 - 1 - 1 - 1 - 1.

Martin Pearson, of Featherstone Rovers, has scored one try in five successive matches.

Simon Ashcroft, of Swinton, has scored one try in six successive matches.

FEATHERSTONE RECORD

Owen Simpson and Paul Newlove, of Featherstone Rovers, are both poised to break the club record of 31 tries in a season. Left winger Simpson has 30 tries, while centre partner Newlove has 29. The record is held by winger Cyril Woolford, who scored 31 in 1958-59.

G. BARLOW & SONS LTD.

UNION STREET WEST, OLDHAM

Coach Proprietors and Funeral Directors

Tel: 624 4301/624 9116

**LITTLEMOOR
MILL CARPETS**
Littlemoor Lane
Oldham
(off Ripponden Road)

**FITTED
CARPET
SPECIALISTS**

Fitted by experts
within 7 days

Ring for
FREE QUOTATION
061-620 9866

Our BED CENTRE
always has a big
range in stock - call
in and see

A family business
that
looks after your
family's needs . . .

BEE FAMILY FINANCE

If you require credit for
*Household Goods
*Carpets
*Furniture
*TV's
*Car Repairs etc.
JUST CALL IN AT THE
BEE
FOR FRIENDLY ADVICE

*We can also arrange
credit
facilities for leading
fashion shops
in Oldham and
Manchester.

061-624 9908
21 Retiro Street,
Oldham

* WRITTEN DETAILS ON REQUEST *

OGDEN & PARTINGTON

CERTIFIED
ACCOUNTANT

D. J. TAYLOR, F.C.C.A.
15 Queen Street
Oldham OL1 1RD

Telephone:
061-624 1177

Your Hosts
Stephen and
Pauline Wilde

Welcome You to

The Clarence Hotel

Greenfield

Bar Meals -
Breakfasts and
Small Parties etc.

Telephone 045
7 872319

OPEN 6 DAYS
ROUGH'YEDS

become

SMART'YEDS

at

HEADHUNTERS

Professional Hairdressing
138-140 Ashton Road,
Oldham
Tel: 061-624 2984
also at

Moston and Bolton

Payne's
CONFECTIONERS
LTD

73 Lees Road
Oldham
624 7391

Bakery
Produce
Supplied
FRESH
DAILY

The
Village
Manor
Restaurant

*

HIGH STREET
UPPERMILL
SADDLEWORTH

*

Telephone:
0457 873944
OR
061-624 6056

"Monty's"

NIGHTCLUB



OLDHAM'S
FOREMOST
FREEHOUSE

Meals always
available

17/21 Mumps,
Oldham
Tel: 061-620 9566

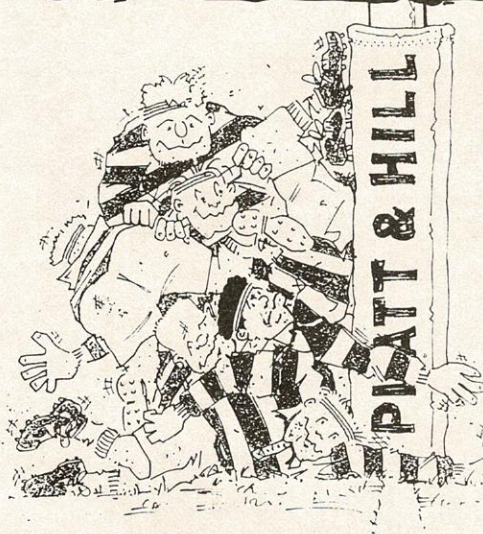
PROCARE by Medipost Limited

- For all your team's medical requirements, eg. first aid, sports supports, strappings & medical bags etc.
- Contact Procare on 061 678 0233 for a full catalogue



- Suppliers to all professional and amateur clubs

WE'VE CURED HEADACHES FOR THE ROUGHYEDS



Manufacturers of upholstery fillings for over a century, Platt & Hill make foam and fibre fillings of the highest quality right here in Oldham.

So reliable are our products, that Oldham RLFC have selected them to cushion the uprights of their goal posts.

In a way, you see, we've prevented headaches all round!

PLATT & HILL
FOAM AND FIBRE FILLINGS

FIBRE FILLINGS DIVISION:
Belgrave Mill, Keswick Avenue,
Oldham, Lancs OL8 2LZ.
Tel: 061-626 4638. Telex: 669550.
Fax: 061-627 3265.

COMMERCIAL CORNER

IS SPONSORED BY
THE SHEPHERDS BOY, HUDDERSFIELD ROAD, OLDHAM
BECKS BEERS & HOME COOKED FOOD

Oldham R.L.F.C. trip to the 1993 Premiership Finals at Old Trafford, Sunday, 16th May.

- * Complimentary Drinks at Parkfield Hotel.
- * Depart Parkfield Hotel at 11.00 a.m. prompt.
- * Four Course Meal at Lancashire County Cricket Club.
- * Seated Match Ticket.
- * Executive Coach Travel.
- * Limited Availability.
- * Book Early.
- * Deposit £20.00.
- * Fully Inclusive Price £49.00.

Contact: JUDY CAMPBELL or PETER
YOUNG 061-626 4501
or DAVID WHITEHEAD: 061-627 4421

<p>LANCASHIRE COUNTY CRICKET CLUB CONFERENCE & BANQUETING CENTRE</p> <p>Patron: HER MAJESTY THE QUEEN</p> <p>***</p> <p>SUNDAY LUNCHEON MENU</p> <p>***</p> <p>RUGBY LEAGUE PREMIERSHIP FINALS SUNDAY, 16th MAY 1993</p>	<p>A Choice of: PRAWN COCKTAIL WITH MARIE ROSE SAUCE SMOKED MACKEREL WITH HORSE RADISH SAUCE</p>	
	<p>CREAM OF VEGETABLE SOUP CRUSTY ROLL AND BUTTER</p>	
	<p>TOPSIDE OF BEEF SERVED WITH YORKSHIRE PUDDING</p>	
	<p>ROAST LEG OF LAMB SERVED WITH MINT SAUCE</p>	
	<p>CHEF'S SELECTION OF VEGETABLES AND POTATOES</p>	
	<p>FRESH STRAWBERRIES AND CREAM</p>	
	<p>DAIRY ICE CREAM CHEESE AND BISCUITS</p>	
	<p>COFFEE</p>	

YOUR CHANCE TO BE A COMPLETE DICK!

Today we are offering Richard Russell's complete playing kit as the Prize in our Matchday Raffle. Tickets cost just 50p each and the Winner gets the Shirt, Shorts and Socks, as worn by our very own Skipper. We will be making the Draw at half time.

LIFELINE WINNERS WEEK No. 22

£1,000 - 0760 TOM McCONNELL c/o MCMC Conveyors, Chadderton.

£50 - 2972 PAT AND JULIE c/o Gaskell & Co.

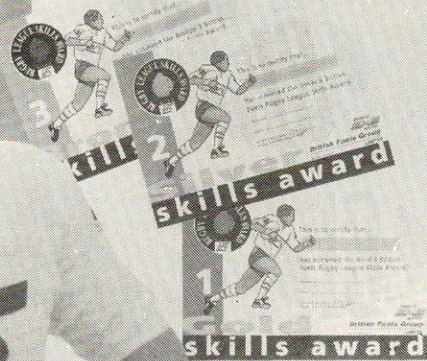
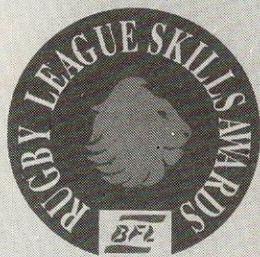
Special Prize: Midi Hi-Fi System. 1688 D. JACKSON c/o Mossley Home Improvement.

OLDHAM SUPER CASHLINE DRAW WEEK 6

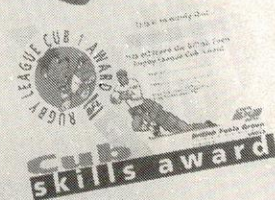
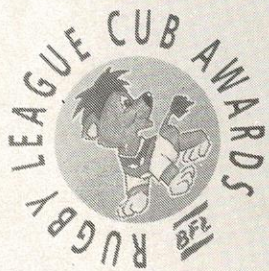
SUPER BONUS £500	M8133	H. DAWSON	002	Clarksfield Hotel
£100 (Monday)	B4642	D. GARDNER	171	Haven Kitchens
£100 (Tuesday)	A4915	A. HAWKINS	306	Nimble Nook Club
£100 (Wednesday)	N0392	F. MACKAY	234	Waterhead News
£100 (Thursday)	N6453	M. TAYLOR	276	Dog & Partridge
£100 (Friday)	M5553	E. PLATT	078	Big Lamp
£100 (Saturday)	A1176	E. BENTLEY	077	Stamford Park News
£100 (Sunday)	E3833	D. JACKSON	121	White Hart

AGENTS WEEKLY DRAW 298 (Mitchell's News)

Garry says "Improve your game with the **BFL** Rugby League Skills Award Scheme"



An exciting range of awards for children of all ages aimed at raising individual skill levels in a challenging and enjoyable way.



The British Football League's Rugby League Skills Awards are part funded by the Government's Sports for All initiative.

SPORTS MATCH

For further details of Sports Match contact The Sports Match Executive, Technical House, Priests Street, Oldham, WY1 1DE. Tel: 0161 828 8771

for further information please contact:
 Monday 5th April 1993 at Watersheddings
 9.30 - CUB AWARDS 12.30 LION BRONZE AWARDS
 Send £3 to Niel Wood, Hathershaw Pool, Schofield Street, Oldham.

OLDHAM
 Leisure Services

skills award

A WATERSHEDDINGS WELCOME TO LONDON C.

PAUL FISHER. 22 years old. Half back/five eighth/full back. 1992 played in Queensland Residents side and won State League Final with Logan City. Paul started his Crusader career with a try against the 30-10 victory over Rochdale Hornets. Certainly an impressive "General" on the pitch and an asset to the Crusaders team.

SCOTT ROSKALL. Centre. New signing from Gold Coast Giants, previously played for Runaway Bay. Scott is a big centre with the ability to score tries. He's one to look out for this season.

DARRYL PITT. Centre. Darryl's career to date spans North Banyo, Fortitude Valley, Carlisle and Fulham R.L.F.C. A player who holds his first team spot for London Crusaders by being a hard-attacking back. Darryl was voted Lancashire Club Supporters Club Player of the Year for 1991-92 season.

SHANE BUCKLEY. Winger/Centre. Representative honours with Queensland U21 - 1988 and 1989, Queensland Rep side 1989-91 and Queensland Residents side 1989-91. Top try scorer last season for the London Crusaders. Shane is a problem to defences and an asset to an attacking side.

DANNY MULKERIN. Front/second rower. Danny is a strong running forward, his work rate is 100% for 80 minutes and a real grafter. A forward to watch for the 1992-93 season.

DAVID KING. Front row/second row. Played for Gold Coast Seagulls under the guidance of Wally Lewis. David has competed in the New South Wales R.L. Winfield Cup Competition and prides himself on his strength and fitness. In his first season with Crusaders, a try scorer extraordinaire. Crusaders biggest asset.

NICHOLAS HALAFIHI. Second row/loose forward. Nick played for G.B. Students, as well as Hull Colts and Sheffield Eagles, where Nick was bought in October, 1991. Nick is a hard-working forward with the speed to break away from the opposition and score tries.

CHRIS SMITH. Second rower. Chris played for St. Marys A.R.L.C., as well as Richmond R.U.F.C. before joining London Crusaders last season. Chris made a fantastic transition to Rugby League and is a regular

first teamer, with the ability to slot over goals from all over the pitch.

STEVE ROSOLEN. Loose forward. Representative honours for Wide Bay, Queensland Country and Brisbane. Steve came over from North Sydney and was voted Player of the Season for 1991-92 for London Crusaders. Steve is the controlling force in the forward pack this season, with his vast experience and talent. One to watch for 1992-93.

MATTHEW DRAY. Full back of five eighth. Representative honours for North Sydney, 1989. Matthew is reliable under a high ball and always willing to counter-attack. He's quick and the general of the back line.

DAVE ROTHERAM. Formerly Fulham, now a Crusaders most committed player. Representative honours with G.B. and England Students, having studied B.Ed. at West London Institute. Hard-working, pacy hooker who gives 100% every match. Two tries off a century of tries for London Crusaders.

MARK RILEY. Half back. Scored in his last six appearances for Crusaders. Mark is a live wire on the pitch, reads the game well and is consistently incisive to breaks or opening up the back line. Very quick, nimble player, difficult to tackle and given half a yard, will break any defensive line.

COLIN ATKINSON. Winger/Centre. Representative honours at Yorkshire Schoolboys, British Polytechnics, England Students and G.B. Students. Bought from Halifax last season, Colin is a fast-running and hard-tackling winger, strengthening a back line to watch this season.

NEVILLE RAMSAY. Veteran of the Crusaders team, the organiser and experienced head for the back line. Neville keeps everyone in position and caused problems with his strong running and elusive side step. Tough player, fitness fanatic that has an unbearable work-rate on the pitch and in the Gym.

GARY BERNEY. Centre/wing. Young player who is finding try scorer form this season at Crusaders. Very pacy back, with a great change of pace. Can score tries from anywhere on the pitch and has a great boot on line when needed. Raw talent with bags of potential.

THIS PAGE IS SPONSORED BY JENKINSON & CO.,
 ACCOUNTANTS, 6A LORD STREET, OLDHAM.

TODAY'S MAN in the MIDDLE

DAVID ASQUITH

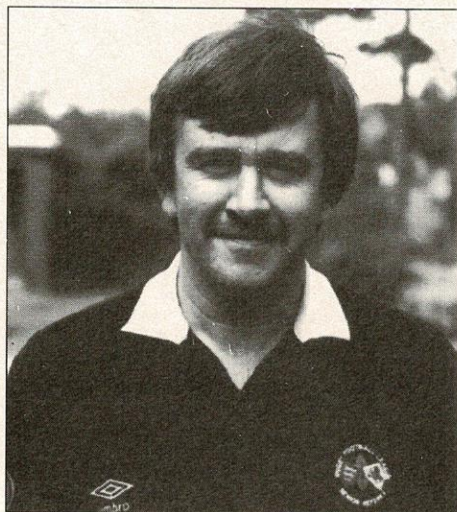
from York

is

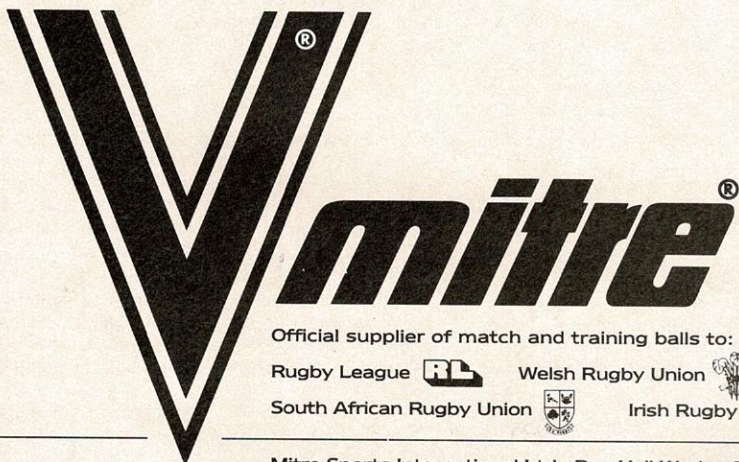
TODAY'S REFEREE

Born: 20.6.53

Grade One: 1989-90



**BELIEVE IT OR NOT, RUGBY LEAGUE
AND RUGBY UNION DO AGREE
ON SOMETHING.**



Official supplier of match and training balls to:

Rugby League



Welsh Rugby Union



B.A.R.L.A.



South African Rugby Union



Irish Rugby Union



Mitre Sports International Ltd., Bay Hall Works, Birkby, Huddersfield,
West Yorkshire HD1 5AJ. Tel: 0484 537488. Fax: 0484 530042.

TUNKS' TALKBACK



Rugby League is a game of skill, possibly more so than any other game, but Rugby League is also all about pride and passion. Last week I asked the team to restore the pride and return the passion, which had been missing from our performances in the previous two games. They could not have given me more.

It may not have always been pretty to watch but we looked totally committed, met Featherstone head on and put on a show of strength and power. We had suffered three defeats at the hands of Featherstone Rovers, defeats that had hurt us badly and we were determined to even things up somewhat. Last Sunday's victory will give us a big boost psychologically the next time the two teams meet, be it this season or next.

This afternoon we seek the two points which could guarantee us promotion. We won't be underestimating London Crusaders because they also produced a fine performance last week, coming from behind to beat Huddersfield. London have a new man in charge in the shape of Tony "Tank" Gordon and Tony knows more than a bit about Rugby League. He realised from the off that Crusaders needed an organiser in the side and moved immediately to sign New Zealand half-back Neville Ramsey.

Tony has also strengthened the side by bringing over two or three Russian players and he has promised to introduced more new faces.

London Crusaders are putting in a big effort to secure a top four position and a place in the Premiership play-offs, but we will be all-out to deny them today.

ENJOY THE GAME

TUNKS TEASERS

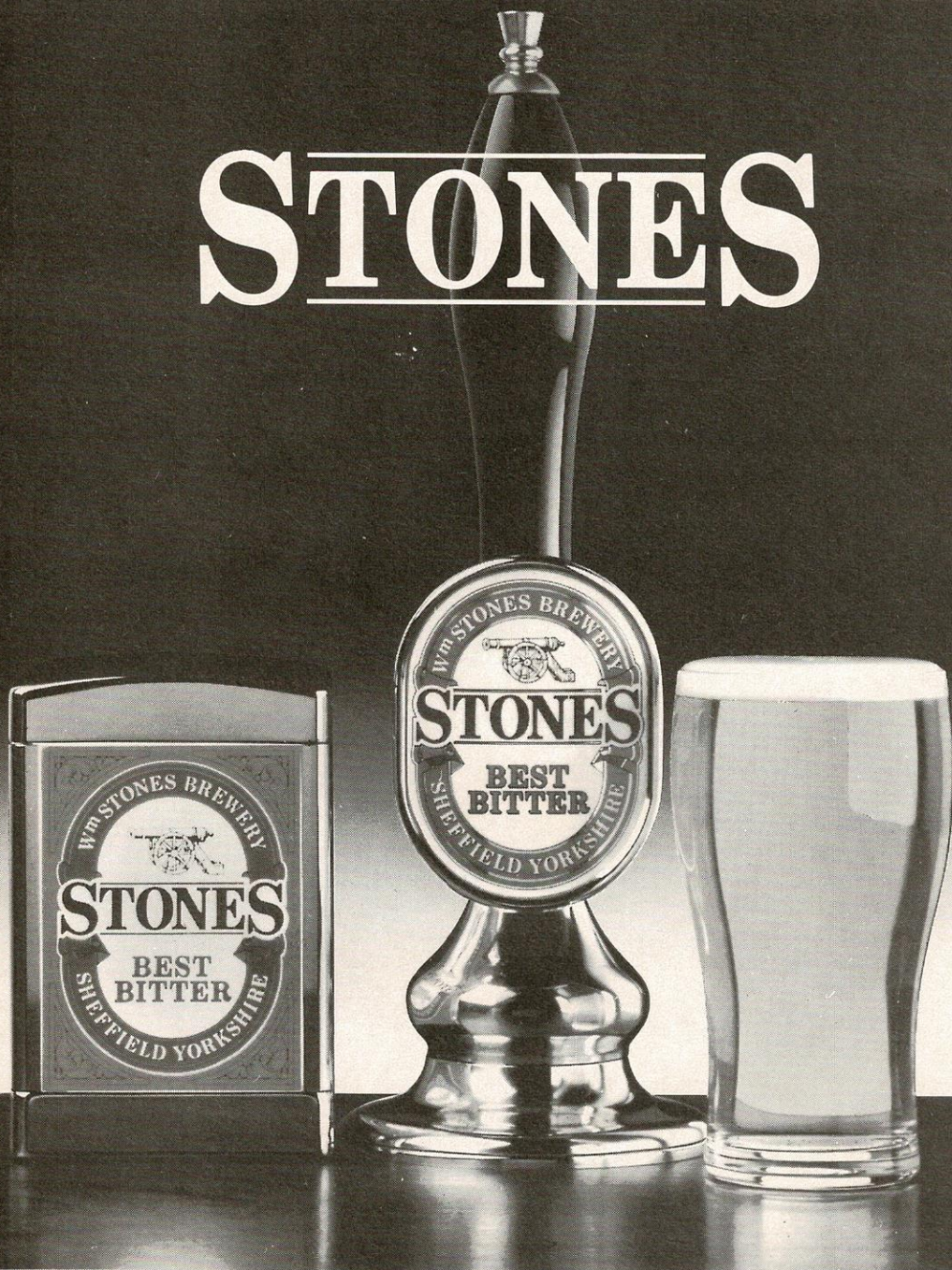
1. In which season did Workington win the Challenge Cup?
2. Which now defunct club used to play at "The Cliff"?
3. Who holds the tries in a season record for Leeds?
4. Which team play at Wilderspool?
5. Which team were the last winners of the BBC2 Trophy?
6. Who was the first player to play and score in every game in a season?
7. Which team are nicknamed "The Border Raiders"?
8. Who was the Oldham captain in the first season after the Second World War (1945-46)?
9. Which two teams contested the first R.L. Charity Shield in 1985?
10. Which player scored two tries in three consecutive Challenge Cup Finals?

ANSWERS

1. 1951-52. 2. Broughton Rangers. 3. Eric Harts in 1935-36. 4. Warrington. 5. Hull. 6. Jim Hoey of Widnes in 1932-33. 7. Carlisle. 8. Ray Smith. 9. Wigan and Hull K.R. 10. Kevin Iro of Wigan in 1988, 1989 and 1990.

THIS PAGE IS SPONSORED BY
NORTHERN ROCK BUILDING SOCIETY, OLDHAM

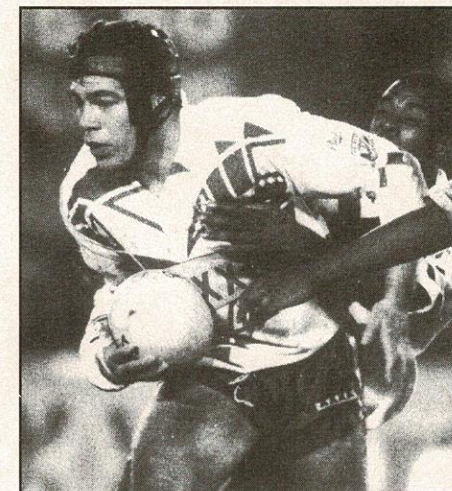
STONES



THE MAJOR SPONSOR OF RUGBY LEAGUE.

PLAYER PROFILE

SHANE 'TRY MACHINE' TUPAEA



Full Name: Shane Ranginiu Tupaea

Date of Birth: 24th December, 1965.

Birthplace: Wellington, New Zealand.

Height: 5' 11"

Weight: 14 stone 7 lbs.

Favourite Drink: Ribena, Guinness and Black.

Favourite Food: Chinese, Chicken and Chips from Gold Star.

Favourite T.V. Show: Cheers, Cosby Show.

Favourite Music: Eagles, Christopher Cross, James Taylor.

Hobbies: Squash, Music.

Previous clubs: Mansfield, Rochdale, Swinton.

Biggest Influence on Career so far: Castlemaine XXXX

Favourite Player: Dean Lance (Canberra).

Favourite Ground: Any on a warm day.

Most Difficult Opponent: George Mann.

Most memorable match seen: Halifax v. St. Helens, Wembley 1987.

Biggest Thrill: Watching my son being born.

Biggest Disappointment: Losing at Old Trafford last year.

Personal Ambition: To finish my career injury-free.

Person you would most like to meet: Kim Basinger.

Have you ever been mistaken for anyone famous: Iva Ropati.

*THIS PAGE IS SPONSORED BY TANFIELD LTD.,
TOWBAR & TRAILER CENTRE, CHAMBER ROAD, OLDHAM.
TEL: 061-633 4872*

OLDHAM IN XXXX-CELLENT FORM

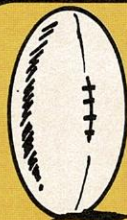
Oldham are celebrating, following their victory against Featherstone Rovers last Sunday. In what proved to be a gripping game, Oldham managed to gain their revenge, winning 22-20.

Forward Rowland Phillips was awarded the title "Man of the Match" by official sponsors Castlemaine XXXX. Rowland who is on loan from Warrington, put in an excellent performance, in what was his first game with Oldham.

Oldham now face the London Crusaders for their third match of the season. Oldham have an impressive track record against the Crusaders, having already secured two victories safely under their belt this season, in both the League and Silk Cut Challenge Cup.

The game today should be an interesting encounter as the Crusaders, now under the management of former New Zealand coach Tony Gordon, are all fired up to try and equal the score!

Expected to make a big impact is one of the most recent additions to the Crusaders Camp, Neville Ramsey. The highly rated half back has previously represented Auckland and the New Zealand Maoris and also had a brief spell at Bradford Northern.



CASTLEMAINE

XXXXX



TEAM CHECK

SUNDAY, 21st MARCH, 1993

OLDHAM TEAM CHANGES

1. WALLY GIBSON
2. GARY CHRISTIE
3. IVA ROPATI
4. DARREN ABRAM
5. SEAN TYRER
6. MARTIN STRETT
7. SEAN DEVINE
8. IAN SHERRATT
9. DAVID STEPHENSON
10. MARK SHEALS
11. BEN OLSEN
12. SHANE TUPAEA
13. DAVID BRADBURY
14. ROWLAND PHILLIPS
15. HUGH GUMBS

PENALTIES

1	2	3	4	5
6	7	8	9	10
11	12	13	14	15
16	17	18	19	20

SCRUMS

1	2	3	4	5
6	7	8	9	10
11	12	13	14	15
16	17	18	19	20

LONDON CRUSADERS TEAM CHANGES

1. PAUL FISHER
2. COLIN ATKINSON
3. SCOTT ROSKELL
4. DARRYL PITT
5. SHANE BUCKLEY
6. MARK RILEY
7. NEVILLE RILEY
8. DANNY MULKERIN
9. DAVE ROTHERHAM
10. DAVE KING
11. NICK HALAFIHI
12. CHRIS SMITH
13. STEVE ROSOLEN
14. MATT DRAY
15. GARY BERNEY

PENALTIES

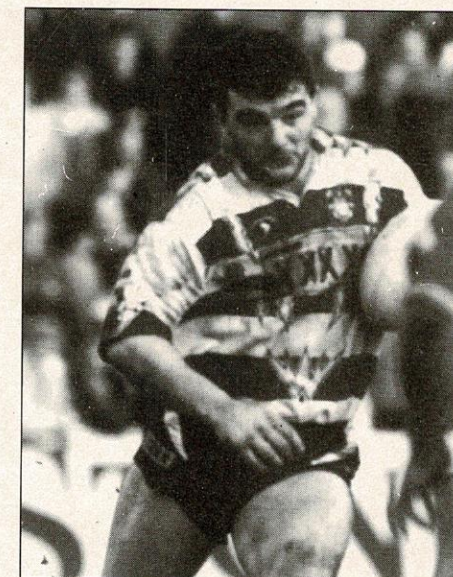
1	2	3	4	5
6	7	8	9	10
11	12	13	14	15
16	17	18	19	20

SCRUMS

1	2	3	4	5
6	7	8	9	10
11	12	13	14	15
16	17	18	19	20

Referee: D. ASQUITH

Touch Judges: Mr. K. LEYLAND (Red Flag)
Mr. N. FARRIMOND (Yellow Flag)



MORE XXXX FACTS

For all you XXXX fans out there here's a few more fascinating facts about the Aussie's most famous pint.

Did you know:

- * XXXX was the first beer to sponsor the wacky Australian pub sport of Barfly jumping.
- * The two varieties of hops used in brewing XXXX are Golden Cluster and Pride of Ringwood.
- * That roughly 45 million viewers have seen XXXX TV advertising since the launch.
- * The four X's in the famous brand name 'Castlemaine XXXX' refer to its strength rating.

Watch this space for more XXXX Facts.





'A' TEAM ROUND UP

with COACH JOHN PRINCE

Having no fixture last weekend at least gave us a chance to get some of our players over their injuries and also gave me the opportunity to watch our first team's great victory over Featherstone Rovers.

The most pleasurable part, from a personal point of view, was to see the performances of Sean Devine, Martin Strett and David Stephenson, who have all graduated from the "A" Team in recent weeks.

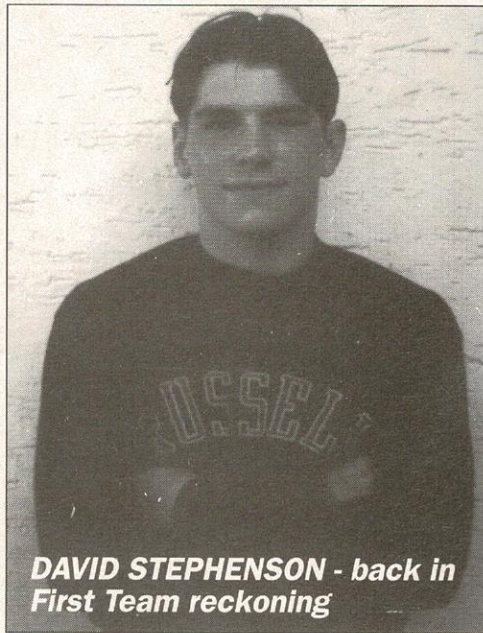
By the time you read these notes, we will have completed a tough away game at Workington on Saturday.

The following week we are at home on Wednesday, 24th March to Swinton, kick-off 7.0 p.m. and on Friday, 26th March to Huddersfield, kick-off 7.30 p.m.

In our last home Division Two Alliance Fixtures, your support would be most welcome.

Yours in Oldham R.L.

JOHN PRINCE



**DAVID STEPHENSON - back in
First Team reckoning**

YOUNGERS ALLIANCE FIXTURES SECOND DIVISION 1992/93



Saturday, 29.8.92	Sheffield Eagles	H 20-33 (L)	1.00 p.m.
Saturday, 5.9.92	Carlisle	A 28-18 (W)	12.00 p.m.
Saturday, 12.9.92	Keighley	A 28-24 (W)	2.30 p.m.
Saturday, 19.9.92	Salford	H 10-31 (L)	1.00 p.m.
Friday, 25.9.92	Ryedale York	A 14-22 (L)	7.30 p.m.
Saturday 3.10.92	Carlisle (Lancs C.C. Shield)	H 26-20 (W)	1.00 p.m.
Friday 9.10.92	Leigh	H 16-19 (L)	7.30 p.m.
Friday 16.10.92	Wigan (LS 2)	H 4-34 (L)	7.30 p.m.
Friday, 29.10.92	Salford	A 6-42 (L)	7.30 p.m.
Friday, 6.11.92	Doncaster (Cup)	H 64-8 (W)	7.30 p.m.
Saturday, 14.11.92	Carlisle	H 40-12 (W)	1.00 p.m.
Friday, 20.11.92	Huddersfield	A 28-18(W)	7.30 p.m.
Saturday, 28.11.92	Workington (Cup2)	A 16-26(L)	
Saturday, 5.12.92	Hemel Hempstead	H 58-10(W)	1.00 p.m.
Saturday, 12.12.92	Swinton	H	1.00 p.m.
Friday, 18.12.92	Bramley	A	7.30 p.m.
Saturday, 2.1.92	Swinton	H	1.30 p.m.
Saturday, 15.1.93	Hunslet	H 50-10(W)	1.00 p.m.
Thursday, 21.1.93	Leigh	A 20-30(L)	7.30 p.m.
Wednesday, 29.1.93	Wigan (YA Cup 2)	H 22-22(D)	7.30 p.m.
Wednesday, 4.2.93	Wigan (YA Cup 2 Rply)	A 14-32(L)	7.30 p.m.
Saturday, 6.2.93	Dewsbury	A 10-34(L)	2.00 p.m.
Saturday, 13.2.93	Workington	H 42-16(W)	1.00 p.m.
Wednesday 17.2.93	Bramley	A 13-30(L)	7.30 p.m.
Saturday, 20.2.93	Hemel Hempstead	A 14-25(L)	2.30 p.m.
Saturday, 27.2.93	Doncaster	H 30-20(W)	1.00 p.m.
Saturday, 6.3.93	London Crusaders	H 36-14(W)	1.00 p.m.
Saturday, 20.3.93	Workington	A	2.30 p.m.
Saturday, 27.3.93	Huddersfield	H	1.00 p.m.

WRIGLEY CLAYDON & ARMSTRONGS

SOLICITORS

Complete Legal and Financial
Service



PRUDENTIAL BUILDINGS
UNION STREET, OLDHAM



Tel: 061-624 6811 (Oldham)
or 0706 815712 (Shaw)
Fax: 061-624 3743

Licensed Credit Brokers

NEIL GIBBISON

B.D.S., V.U. Manc.

DENTAL SURGEON

36 Oldham Road
Uppermill
Oldham OL3 6HV

Telephone:
0457 872108

Cascade Ford Jct. 3 - M63

OPEN
EVERY
DAY

"we're only 30 minutes away"



Over **100** USED CARS
in stock - always

DEALER

51 BARTON ROAD, URMSTON

Tel: 061-747 0544

OLDHAM R.L. SOCIAL CLUB SHEDDINGS

Tel: 061-624 0368

**LIVE
ENTERTAINMENT**
EVERY Wednesday, Friday
and Saturday
Last Orders 1.30 a.m.

FUNCTION ROOM
always available
- FREE to O.R.L.F.C.
shareholders
Ring for details

THIS PAGE IS SPONSORED BY BILL AND BRENDA ROGERS

SKIPPERS' SPOT

with OLDHAM CAPTAIN
RICHARD RUSSELL

After a couple of poor results, it was nice to get back to our winning ways, especially against our main rivals all season, Featherstone Rovers.

Part of the credit for such a hard fought victory should go to the tremendous support from off the terraces, it really does make a difference, thanks.

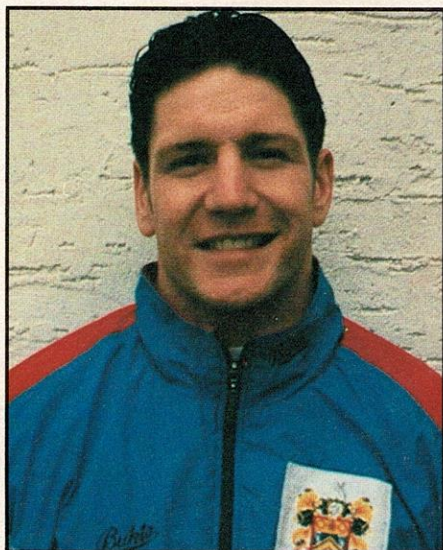
The effort and commitment shown on the field was much better, right from Wally at full back to our new recruit from Warrington, number 15, Rowland Phillips. What an impact he made, eventually taking the Man of the Match award.

The game itself was exciting right the way through with two being sent off, our own Tiny Solomona being very unlucky indeed to be one of them.

On a brighter note it was great to see out tackling machine, Shane Tupaea cross the line, although we have paid for it at training because he has not shut up about it. He now says on his way to the line from well inside his own half, he beat 13 Featherstone players as well as two of their spectators.

Today's opponents, London Crusaders, no strangers to us at Watersheddings will be even tougher than usual under new coach, Tony Gordon, with a good win against Huddersfield under his belt.

So let's hear that great support.



HYDE PRECISION COMPONENTS LTD

For all types of sub-contract machining
- especially C.N.C. turning and milling.

"The ones who have never knocked on"

Best wishes to Oldham for the season.

Tel: 061-368 3446

WAR GAMES

THE RUGBY LEAGUE CHAMPIONSHIP. LIVE ONLY ON SKY SPORTS.



Watch the battle for the Rugby League Championship live on Sky Sports every Friday evening.

You'll see all the action, you'll get all the in-depth analysis. Because when it comes to covering all the sporting action, you'll find that Sky Sports is in a different league.

£15

OFF* ANY

SATELLITE SYSTEM
WHEN YOU REDEEM THIS VOUCHER AT
COLORVISION STORES NATIONWIDE.

*In cash goods or guarantees

COLORVISION

From September 1st 1992,
Sky Sports will be a
subscription channel of
British Sky Broadcasting
Limited. Astra satellite
receiving and decoding

SKY
SPORTS

equipment is required to
receive Sky Sports. Written
details available from Sky
Subscriber Services Limited,
PO Box 43, Livingston, West
Lothian EH54 7JD

NOTICE TO ALL SPECTATORS
THE R.F.L. HAS INTRODUCED
FINES FOR SPECTATOR PITCH
INTRUSION.
PLEASE KEEP OFF THE PITCH
AT ALL TIMES

THIS PAGE IS SPONSORED BY
WILSON SPORTS TROPHIES, LEES ROAD, OLDHAM

STATS SPONSORED BY MAINTENANCE INSULATION LTD.
LITTLEBANK STREET, OLDHAM - 652 7325

P L A Y E R S

Opponents	Date	Ven.	Res.	F-A	Aft.	1	2	3	4	5	6	7	8	9	10	11	12	13	14	15
LONDON C.	30.9.92	H	W	27-12	2,428	Tyrer	Ranson	Cocker	Royal	Maxwell	Maryn	Deane	Sheals	Bates	McDermott	Meadows	Tupaea	Russell	Olsen*	Solomona*
CARLISLE	6.9.92	H	W	38-14	2,282	Tyrer	Ranson	Cocker	Royal	Gumbs	Maryn	Deane	Sheals	Pachniuk	McDermott	Meadows	Tupaea	Russell	Olsen*	Solomona*
WARRINGTON	13.9.92	H	W	33-20	4,041	Tyrer	Ranson	Cocker	Royal	Gumbs	Maryn	Deane	Sheals	Pachniuk	McDermott	Meadows	Tupaea	Russell	Olsen*	Solomona*
HUDDERSFIELD	20.9.92	A	W	28-24	2,886	Tyrer	Ranson	Cocker	Royal	Gumbs	Maryn	Deane	Sheals	Pachniuk	McDermott	Meadows	Tupaea	Russell	Olsen*	Solomona*
LEIGH	23.9.92	A	W	26-14	3,140	Maryn	Ranson	Cocker	Royal	Tyrer	Russell	Deane	Sheals	Pachniuk	McDermott	Meadows	Tupaea	Russell	Olsen*	Solomona*
Lance Cup 2	27.9.92	H	W	16-8	3,246	Gibson	Ranson	Cocker	Warrington	Tyrer	Maryn	Deane	Sheals	Pachniuk	McDermott	Meadows	Tupaea	Russell	Olsen*	Solomona*
SWINTON	2.10.92	H	L	4-24	3,352	Tyrer	Gibson	Cocker	Gibson	Bradbury	Warrington	Kerry	Sheerratt	Stephenson	Solomona	Jones	Tupaea	Olsen	Meadows*	McDermott*
Wigan	10.10.92	A	L	8-48	9,020	Tyrer	Gibson	Cocker	Cocker	Gumbs	Maryn	Kerry	Sheerratt	Stephenson	Solomona	Jones	Tupaea	Olsen	Meadows*	McDermott*
Lance Cup S.F.	11.10.92	A	W	21-20	2,740	Tyrer	Cocker	Gibson	Royal	Gumbs	Russell	Kerry	Sheerratt	Stephenson	Solomona	McDermott	Meadows	Russell	Pachniuk	Jones*
ROCHDALE HORNETS	18.10.92	A	W	23-16	1,560	Tyrer	Cocker	Gibson	Royal	Gumbs	Russell	Kerry	Sheerratt	Stephenson	Solomona	McDermott	Meadows	Olsen	Bradbury*	Meadows*
BRAMLEY	18.10.92	A	W	23-16	1,560	Tyrer	Cocker	Gibson	Royal	Gumbs	Russell	Kerry	Sheerratt	Stephenson	Solomona	McDermott	Meadows	Olsen	Bradbury*	Meadows*
SWINTON	1.11.92	H	W	56-6	4,721	Tyrer	Ranson	Cocker	Royal	Gumbs	Gibson	Kerry	Sheerratt	Stephenson	Solomona	McDermott	Meadows	Olsen	Bradbury*	Meadows*
REGAL TROPHY RD. 1	8.11.92	H	L	22-40	4,383	Gibson	Higgins	Tyrer	Royal	Gumbs	Gibson	Kerry	Sheerratt	Stephenson	Solomona	McDermott	Meadows	Olsen	Bradbury*	Meadows*
CARLISLE	15.11.92	A	W	25-20	1,300	Tyrer	Bradbury	Gumbs	Royal	Ranson	Gibson	Kerry	Sheerratt	Stephenson	Solomona	McDermott	Meadows	Olsen	Bradbury*	Meadows*
HUDDERSFIELD	22.11.92	H	L	6-17	3,183	Tyrer	Ranson	Cocker	Royal	Gumbs	Gibson	Kerry	Sheerratt	Stephenson	Solomona	McDermott	Meadows	Olsen	Bradbury*	Meadows*
SWINTON	29.11.92	A	W	18-12	1,650	Gibson	Ranson	Cocker	Royal	Cocker	Maryn	Kerry	Sheerratt	Stephenson	Solomona	McDermott	Meadows	Olsen	Bradbury*	Meadows*
REGAL TROPHY RD. 2	5.12.92	A	L	20-24	3,288	Gibson	Ranson	Cristie	Royal	Cocker	Maryn	Kerry	Sheerratt	Stephenson	Solomona	McDermott	Meadows	Olsen	Bradbury*	Meadows*
FEATHERSTONE R.	13.12.92	A	L			Gibson	Ranson	Cristie	Royal	Cocker	Maryn	Kerry	Sheerratt	Stephenson	Solomona	McDermott	Meadows	Olsen	Bradbury*	Meadows*
BRAMLEY	20.12.92	H	W			Gibson	Ranson	Cristie	Royal	Cocker	Maryn	Kerry	Sheerratt	Stephenson	Solomona	McDermott	Meadows	Olsen	Bradbury*	Meadows*
ROCHDALE HORNETS	26.12.92	H	W			Gibson	Ranson	Cristie	Royal	Cocker	Maryn	Kerry	Sheerratt	Stephenson	Solomona	McDermott	Meadows	Olsen	Bradbury*	Meadows*
SWINTON	1.1.93	A	W			Gibson	Ranson	Cristie	Royal	Cocker	Maryn	Kerry	Sheerratt	Stephenson	Solomona	McDermott	Meadows	Olsen	Bradbury*	Meadows*
BRAMLEY	6.1.93	H	W	36-0	2,233	Gibson	Blown	Cristie	Royal	Ranson	Maryn	Kerry	Sheerratt	Stephenson	Solomona	McDermott	Meadows	Olsen	Bradbury*	Meadows*
BRAMLEY	10.1.93	H	W	40-2	2,295	Gibson	Blown	Cristie	Royal	Ranson	Maryn	Kerry	Sheerratt	Stephenson	Solomona	McDermott	Meadows	Olsen	Bradbury*	Meadows*
ROCHDALE HORNETS	13.1.93	H	W	47-22	2,653	Gibson	Blown	Cristie	Royal	Ranson	Maryn	Kerry	Sheerratt	Stephenson	Solomona	McDermott	Meadows	Olsen	Bradbury*	Meadows*
CARLISLE	17.1.93	A	W	32-21	750	Blown	Ranson	Cristie	Royal	Gumbs	Maryn	Kerry	Sheerratt	Stephenson	Solomona	McDermott	Meadows	Olsen	Bradbury*	Meadows*
ROCHDALE HORNETS	24.1.93	H	W	28-12	2,991	Gibson	Ranson	Cristie	Royal	Gumbs	Maryn	Kerry	Sheerratt	Stephenson	Solomona	McDermott	Meadows	Olsen	Bradbury*	Meadows*
SWINTON	27.1.93	A	W	36-10	1,180	Gibson	Blown	Cristie	Royal	Maxwell	Maryn	Kerry	Sheerratt	Stephenson	Solomona	McDermott	Meadows	Olsen	Bradbury*	Meadows*
LONDON C.	31.1.93	H	W	34-6	2,653	Gibson	Blown	Cristie	Royal	Maxwell	Maryn	Kerry	Sheerratt	Stephenson	Solomona	McDermott	Meadows	Olsen	Bradbury*	Meadows*
SILK CUT CHALL. CLIP RD. 1	7.2.93	A	L	14-52	4,332	Gibson	Blown	Cristie	Royal	Maxwell	Maryn	Kerry	Sheerratt	Stephenson	Solomona	McDermott	Meadows	Olsen	Bradbury*	Meadows*
FEATHERSTONE R.	14.2.93	H	W	20-17	4,583	Tyrer	Blown	Cristie	Royal	Maxwell	Maryn	Kerry	Sheerratt	Stephenson	Solomona	McDermott	Meadows	Olsen	Bradbury*	Meadows*
HUDDERSFIELD	21.2.93	H	W	56-16	2,947	Gibson	Blown	Cristie	Royal	Maxwell	Maryn	Kerry	Sheerratt	Stephenson	Solomona	McDermott	Meadows	Olsen	Bradbury*	Meadows*
CARLISLE	3.3.93	H	L	4-42	5,405	Gibson	Blown	Cristie	Royal	Maxwell	Maryn	Kerry	Sheerratt	Stephenson	Solomona	McDermott	Meadows	Olsen	Bradbury*	Meadows*
BRAMPTON N.L. CLIP RD. 3	7.3.93	A	L	8-14	2,413	Gibson	Blown	Cristie	Royal	Maxwell	Maryn	Kerry	Sheerratt	Stephenson	Solomona	McDermott	Meadows	Olsen	Bradbury*	Meadows*
HUDDERSFIELD	14.3.93	H	W	34-32	3,685	Gibson	Blown	Cristie	Royal	Maxwell	Maryn	Kerry	Sheerratt	Stephenson	Solomona	McDermott	Meadows	Olsen	Bradbury*	Meadows*
FEATHERSTONE R.	14.3.93	H	W	34-32	3,685	Gibson	Blown	Cristie	Royal	Maxwell	Maryn	Kerry	Sheerratt	Stephenson	Solomona	McDermott	Meadows	Olsen	Bradbury*	Meadows*
LONDON C.	21.3.93	H	W			Gibson	Blown	Cristie	Royal	Maxwell	Maryn	Kerry	Sheerratt	Stephenson	Solomona	McDermott	Meadows	Olsen	Bradbury*	Meadows*
BRAMLEY	4.4.93	A	W			Gibson	Blown	Cristie	Royal	Maxwell	Maryn	Kerry	Sheerratt	Stephenson	Solomona	McDermott	Meadows	Olsen	Bradbury*	Meadows*
ROCHDALE HORNETS	9.4.93	A	W			Gibson	Blown	Cristie	Royal	Maxwell	Maryn	Kerry	Sheerratt	Stephenson	Solomona	McDermott	Meadows	Olsen	Bradbury*	Meadows*
HUDDERSFIELD	12.4.93	H	W			Gibson	Blown	Cristie	Royal	Maxwell	Maryn	Kerry	Sheerratt	Stephenson	Solomona	McDermott	Meadows	Olsen	Bradbury*	Meadows*
LONDON C.	18.4.93	A	W			Gibson	Blown	Cristie	Royal	Maxwell	Maryn	Kerry	Sheerratt	Stephenson	Solomona	McDermott	Meadows	Olsen	Bradbury*	Meadows*

NEXT HOME GAME
Easter Monday, 12.4.93
OLDHAM V. HUDDERSFIELD
K.O. 3.00 p.m.

1992/3 APPEARANCES & SCORERS

AS AT 15TH MARCH, 1993

Player	APP	SUB	TRIPS	GOALS	DROP GOALS	POINTS
SEAN TYRER	21		8			38
SCOTT RANSON	16	2	10	3		40
STUART COCKER	14		8			32
IVA ROPATI	19	1	16			64
JOHN MAXWELL	4	1	1			4
TOMMY MARTYN	19		6	34	4	96
SEAN DEVINE	8		5	3	1	27
MARK SHEALS	26		3			12
IAN BATES	5		2			8
BARRIE McDERMOTT	6	4	2			8
MARK MEADOWS	9	5	2			8
SHANE TUPAEA	20	3	1			4
RICHARD RUSSELL	26		5			20
BEN OLSEN	18	6	3			12
"TINY" SOLOMONA	20	6	5			20
HUGH GUMBS	14		6			24
RICHARD PACHNIUK	10	3	5			20
DAVID BRADBURY	15	4	3			12
PAUL JONES	3	4				
WALLY GIBSON	24		10			40
STEVE WARBURTON	9	3	4			16
IAN SHERRATT	14	3	1			4
STEVE KERRY	20		6	66		159
DAVID STEPHENSON	6	3			3	
GED BYRNE	1	1				
JOHN HIGGINS	1					
GARY CHRISTIE	10	1	11			44
JOE GRAZIANO	2	4	1			4
JAMIE BLOEM	9		2			3
MARTIN STRETT	2	3		11		22
DARREN ABRAM	3		1			4
NIGEL HESLOP	3		2			8
ROWLAND PHILLIPS		1				

LEAGUE TABLE

STONES BITTER 2ND DIVISION 1992/93

Team	P	W	L	D	F	A	PTS	PTS DIFF
FEATHERSTONE R.	23	20	3	0	752	300	40	+452
OLDHAM	22	17	5	0	603	368	34	+235
ROCHDALE H.	23	13	10	0	491	476	26	+15
HUDDERSFIELD	21	10	11	0	391	444	20	-53
LONDON C.	23	9	13	1	425	479	19	-54
BRAMLEY	23	7	15	1	308	492	15	-184
CARLISLE	22	6	14	2	360	540	14	-180
SWINTON	22	6	17	0	317	548	12	-231

THIS PAGE IS SPONSORED BY IRENE AND HELEN CALOW

BACK PAGES

by MICHAEL TURNER

Earlier in the season we had a look back at all the encounters between Oldham and Australia, so today we are featuring the club's fixtures against NEW ZEALAND.

The Kiwis were actually the first overseas team to visit our shores in season 1907-08, these initial tourists being known as the "All Golds".

Below is a list of all the matches between the two sides.

23.11.08	Oldham 8	New Zealand 7
23.10.26	Oldham 15	New Zealand 10
25.10.47	Oldham 8	New Zealand 18
29. 9.51	Oldham 21	New Zealand 18
29.10.55	Oldham 13	New Zealand 15
4. 9.61	Oldham/Roch 10	New Zealand 8
31. 8.65	Oldham 2	New Zealand 5
27.10.71	Oldham 13	New Zealand 24

In all there have been eight matches against the New Zealanders, with four victories for the Kiwis and four for the "Roughyeds". This of course includes the 1961 encounter, when a combined Oldham and Rochdale XIII defeated the tourists by 10 points to 8 at Watersheddings, thanks to five goals from Oldham centre Johnny Noon who, ironically, was the "Hornets" captain when the Kiwis next toured in 1965.

Oldham were also scheduled to play New Zealand in the 1939-40 tour, but this tour was abandoned due to the declaration of War, with only two matches having been played at St. Helens and Dewsbury.

PHOTO FEATURE (Courtesy of the Oldham Chronicle)

Today's photo shows action from the 1955 Oldham v. New Zealand match: Kiwi hooker Trevor Kilkelly falls to a tackle from Oldham's Frank Daley and Jack Keith, with Charlie Winslade and Harry Ogden ready to give assistance. The player on the extreme left of the photo is the tour vice-captain, Bill McLennan



I am currently researching for a book covering the complete playing records and history of OLDHAM RLFC. If anyone has any old material connected with the club (photos, programmes etc) I would be very interested in viewing such items. Please contact: Michael Turner, 158 Balfour Street, Oldham OL4 1NS. Tel: 061-620 6005

MIDASPORTS

NEW MARKET HALL,
OLDHAM
Tel: 061-678 6199

WARRINGTON STREET
ASHTON-UNDER-LYNE
Tel: 061-344 0550

RUGBY LEAGUE SPECIALISTS

FOR THE SUPPORTER

- NEW** GT. BRITAIN HOME & AWAY
- NEW** AUSTRALIA HOME & AWAY
- NEW** LEEDS & WIDNES HOME & AWAY
- NEW** WIGAN HOME & AWAY
- PLUS** REGULAR TEAMS INC. OLDHAM

AUSTRALIAN N.S.W. SHIRTS
PENRITH, NORTHS, BALMAIN, EASTS,
CANBERRA, NEWCASTLE, CANTERBURY,
BRISBANE, PARAMATTA PLUS
NEW QUEENSLAND STATE OF ORIGIN
SHIRTS

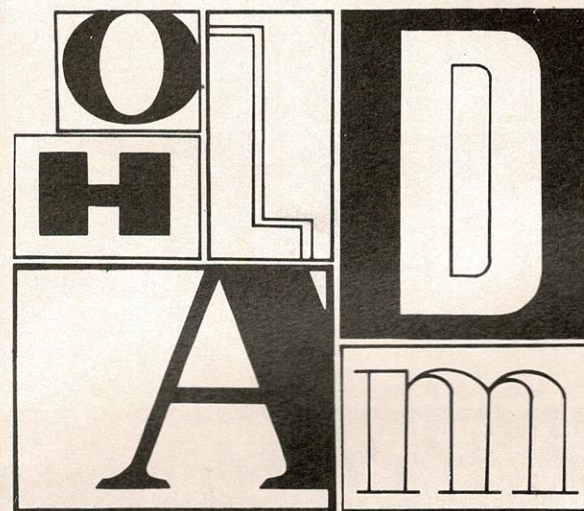
FOR THE PLAYER

- HEADGUARDS
- MOUTHGUARDS
- SHOULDER PADS
- FOREARM PROTECTORS
- SHIRTS - SHORTS - SOCKS
- NEOPRENE SUPPORTS
- BOOTS - STUDS

FULL TEAM KITS AVAILABLE:

UMBRO - HALBRO - ELLGREN

WE ALSO STOCK A WIDE RANGE OF SPORTS CLOTHING, FOOTWEAR & EQUIPMENT



EVENING CHRONICLE

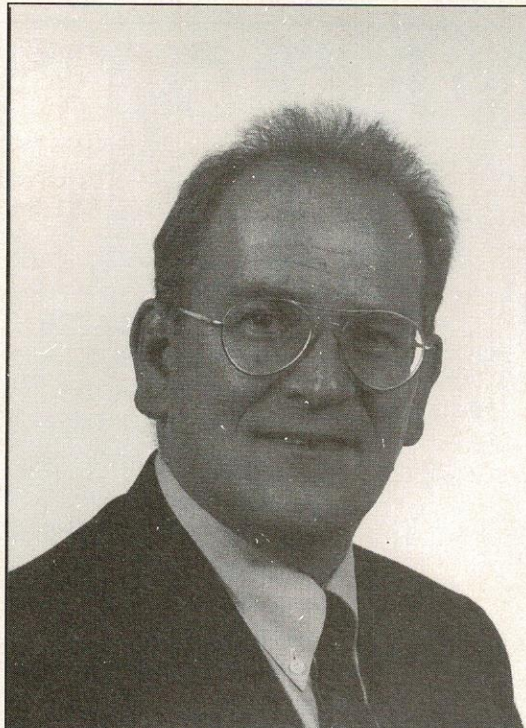
No. 1
for
local
NEWS
and
SPORT



Socialist Group
of the
European
Parliament

Glyn
FORD

Member of the European Parliament



GLYN FORD,

Oldham's Euro-MP

Can be contacted at

46 Stamford Road,

Mossley, Lancashire

OL5 0BE

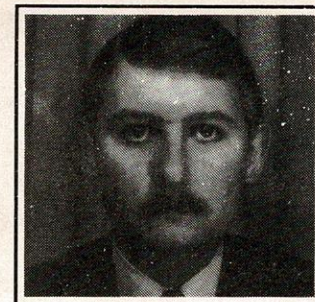
TELEPHONE:

0457 83 6276

FAX:

0457 83 4927

QUOTE - UNQUOTE



with CLUBCALLS GED MASON

After last Sunday's "Battle" with Featherstone, the goal of First Division Rugby is almost achieved. This afternoon, London Crusaders, under the leadership of new coach Tony Gordon, stand between Oldham and two more League points. London have become regular visitors to Watersheddings over the past two seasons, with both League and Cup encounters.

The Crusaders season last year ended here with a Semi-Final Premiership defeat and after last Sunday's home win over Huddersfield, they are looking to catch Alex Murphy's side for a Premiership place. Tunksy's side have still to make two visits to London over the last few weeks of the League season and needless to say, Clubcall will be covering both games from Crystal Palace.

Amongst Clubcall's featured guests over the past few days was Martin Strett. Martin has quickly become a firm favourite here at Watersheddings and his kicking game both in open play and conversion attempts have been very impressive. Martin had this to say to me about his kicking game. "I feel quite at home with the kicking game, you seem to have a little more time to look for touch and if Peter wants me to put it in the opponents 25 and look to play them in their own 25, then I'm more than happy to put the ball down field."

As I mentioned earlier, last weekend's game with Featherstone was a real battle and I suggested to Iva Ropati that, all things being equal, the two teams could meet in the final game of the season at Old Trafford.

"Very much so, I think we needed that win against Featherstone to keep our hopes high from now until the end of the season and hopefully, have another chance in May, at Old Trafford, to turn them over again."

I also asked Iva about the incident which saw Nigel Heslop pole-axed, the kind of challenge that no-one wants to see on a Rugby League field. "I think Brendon Tuuta needs to look at his match discipline, he needs to just calm himself down. It's no good for the game and I think that's where the buck stops."

Don't forget, Clubcall brings you all the latest news, interviews and match reports, every day, 24 hours a day.

Keep enjoying your Rugby,

GED MASON

0898 12 15 80

OLDHAM

ClubCall

0898 12 15 80

**FIRST WITH ALL THE NEWS & VIEWS
REPORTS 24 HOURS A DAY, 365 DAYS A YEAR**

UP-TO-THE-MINUTE INFORMATION

**FIXTURES, TICKET AVAILABILITY, FEATURES AND MATCH REPORTS
ALL THE INSIDE STORIES FROM WATERSHEDDINGS - UPDATED DAILY**

Call cost 36p/minute cheap; 48p/minute other times. (Prices correct at time of going to press). Clubcall, 1-9 Downham Road, London N1

ROGER HALSTEAD looks at PREVIOUS ENCOUNTERS



Although Oldham and London Crusaders have met many times in the past two seasons, this is Crusaders' first visit to Watersheddings at senior level, under the wing of their new General Manager, Graeme Pickering and their new Coach, Tony Gordon.

The two New Zealanders took over a few weeks ago, when Ross Strudwick stood down after several seasons at the helm, so we can, perhaps, now expect to see less of an Aussie influence at Crystal Palace and more of a Kiwi connection.

Tony is no stranger to England, because he has coached the Kiwi National Team and has, in fact, toured this country in charge of New Zealand.

The teams have met twice this season, Oldham winning 27-12 here at Watersheddings on the opening day of the campaign and 34-6 in the First Round of the Silk Cut Challenge Cup on 31st January.

There are three more meetings still to come - today's clash at Watersheddings, followed by Oldham trips to Crystal Palace on Wednesday, 31st March (re-arranged) and on Sunday, 18th April, which is the final League game, prior to the commencement of the end-of-season play-off.

The Oldham team on the opening day of the season was as follows: Tyrer; Ranson, Cocker, Ropati, Maxwell; Martyn, Devine; Sheals, Bates, McDermott, Meadows, Tupaea, Russell. Subs: Olsen, Solomona.

Tommy Martyn kicked five goals and a drop goal and tries were scored by Stuart Cocker (2), Meadows and Devine, in front of a crowd of 2,448. The referee was Paul Volante, of Castleford.

By the time the Crusaders were back here, for the First Round of the Challenge Cup in January, there were several changes in the Oldham side which read like this: Gibson; Bloem, Christie, Warburton, Tyrer; Martyn, Kerry; Solomona, Russell, Sheals, Olsen, Tupaea, Pachniuk. Subs: Strett, Graziano.

In a match which marked the senior debut of former Orrell R.U. stand-off Martin Strett, Steve Kerry (4) and Tommy Martyn (1) kicked the Oldham goals and tries were scored by Gary Christie (2), Kerry, Richard Russell, Wally Gibson and Ben Olsen. The crowd was 2,653 and the referee was Colin Steele.

After today's game, Oldham have only one remaining League match at Watersheddings, Always assuming Oldham finish second, they then have the chance of two home ties in the play-off, leading up to the Old Trafford Premiership Finals, so there is a lot to play for yet, not least the fact that Peter Tunks' men have still to make mathematically sure of winning promotion to the new 16-club Second Division next season.



**WE'RE
THE
OTHER TEAM
TRYING FOR OLDHAM!**

OLDHAM METROPOLITAN BOROUGH COUNCIL

We're trying for Oldham economically, environmentally, socially, educationally, recreationally, culturally and in so many other ways. Just as Oldham Rugby is trying for all its supporters and the people of Oldham.

Telephone inquiries about Council policies & activities to 061-678 4707.



OLDHAM 
Metropolitan Borough 

