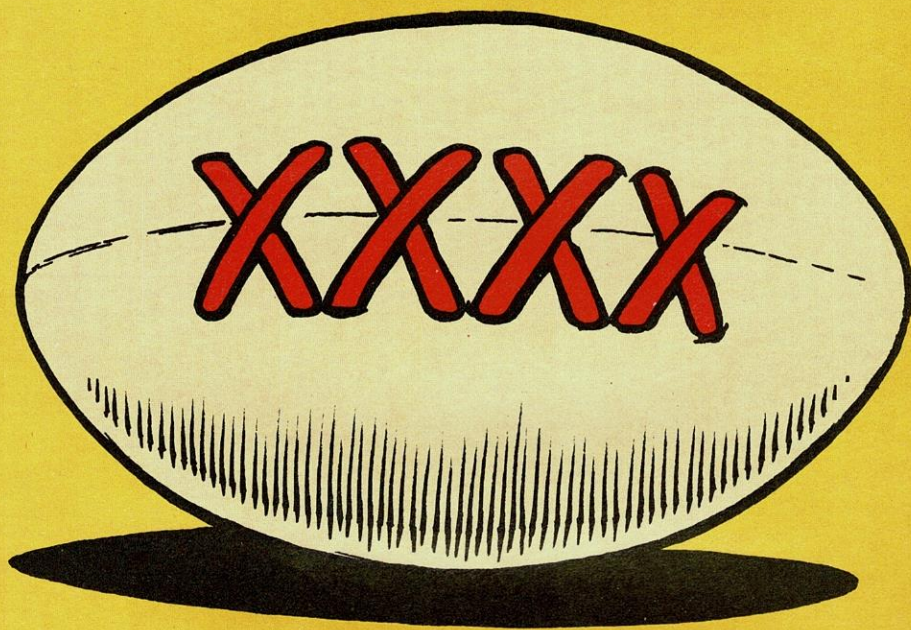


**OLDHAM RLFC  
WOULDN'T GIVE A**



**FOR ANYTHING  
ELSE.**

**OLDHAM**

CASTLEMAINE

**XXXXX**

rugby league football club p.l.c.



Club Sponsor:

CASTLEMAINE XXXX

Executive Match Sponsors:

O.M.B.C. Economic  
Development

Man of the Match Sponsors:

Monty's

Matchball Sponsors:

Cape Builders

**OLDHAM**

v.

**DEWSBURY**

Stones Bitter Divisional

Premiership Round 2

Sunday 25th April 1993

Kick-off 3.00 p.m.

OFFICIAL  
PROGRAMME

£1



**OFFICIAL MATCHDAY PROGRAMME**



# Healthier. Fitter.

Seton Healthcare Group plc, an established and growing force in the healthcare, sport and leisure markets, has an outstanding track record.

A policy of continual reinvestment and acquisition to develop and expand the product portfolio has ensured healthy sustained and profitable growth, making the Group fitter than ever for the challenges of the future.

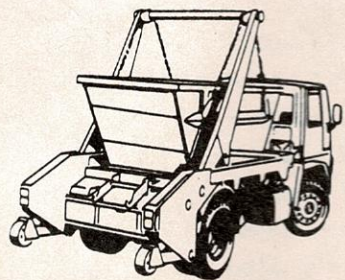
 **Seton  
Healthcare Group plc**

SETON HEALTHCARE GROUP plc, TUBITON HOUSE, OLDHAM OL1 3HS, ENGLAND.  
TELEPHONE: 061-652 2222. TELEX: 669956 (SETON G). FAX: 061-626 9090



## HOLROYD Skip Hire Ltd.

**DIGGER & TRACKED  
MACHINE HIRE**



**YOUR FIRST CHOICE IN  
WASTE REMOVAL**

**TELEPHONE:**

**061-624 1118 OR 061-624 1311**

**EVENINGS/FAX:**

**061-624 1171**

**LITTLE END FARM, MOORSIDE, OLDHAM.**

# SIMPLY THE BEST

## No. 15 - BILLY MITCHELL

Today our featured player in the "Simply the Best" series is one of the finest acquisitions Oldham RLFC ever made from local Junior Rugby League, namely: Billy Mitchell.

William Sandiford Mitchell came to Oldham from the local St. Mary's amateur club originally as an amateur player, due to the fact that he was still only 15 years of age. On reaching his 16th birthday he duly signed professional forms for his home-town club.

This was in 1937 and he soon made his debut in the away match at Widnes later that season.

All our older supporters will need no reminding that Billy's position was centre. On the field of play his attributes included being adept at spotting the gap in the opponents defence and putting his winger in the clear with a precision pass.

Among the Oldham wingmen to benefit from the Mitchell centre skills were the likes of: Stan Inglesfield, Laurie Platt, Terry O'Grady and Dick Cracknell.

Indeed, when O'Grady was picked for the 1954 Tour to Australia and New Zealand, he made particular mention of how himself and Oldham's centre-prodigy Alan Davies, had both been helped and coached by Billy in their early days at the club.

Perhaps the best tribute to the Mitchell talent came from another of his wing partners, Joe Warham, who is now a director at Leeds RLFC. When asked recently who he regarded as the best centre he had played with, he replied without hesitation "Billy Mitchell", he was a real winger's centre".

Billy graced Oldham's colours for 17 years, making his final appearance in the 27-0 home victory over Salford on 28th December, 1954.





# OLDHAM RUGBY LEAGUE FOOTBALL CLUB

The Pavilion, Watersheddings, Oldham  
Telephone: 061-652 5244 and 061-624 4865

## CLUB HONOURS

### Rugby League Championship Play-off Winners:

1909-10, 1910-11, 1956-57

### Runners-up:

1906-07, 1907-08, 1908-09, 1921-22, 1954-55

### First Division Champions:

1904-05

### Second Division Champions:

1963-64, 1981-82, 1987-88

### Rugby League Challenge Cup Winners:

1898-99, 1924-25, 1926-27

### Runners-up:

1906-07, 1911-1912, 1923-24, 1925-26

### Lancashire Cup Winners:

1907-08, 1910-11, 1913-14, 1919-20, 1924-25, 1933-34, 1956-57, 1957-58, 1958-59

### Runners-up:

1908-09, 1911-12, 1918-19, 1921-22, 1954-55, 1966-67, 1968-69, 1986-87, 1989-90

### Lancashire Championship Winners:

1907-08, 1909-10, 1921-22, 1956-57, 1957-58

### Runners-up:

1908-09, 1910-11, 1911-12, 1919-20, 1923-24, 1954-55

### Lancashire Shield Winners:

1975-76, 1979-80

### Colts Premiership Trophy:

1979-80

### Second Division Premiership:

1987-88, 1989-90

### Wigan Sevens Winners:

1991-92

### Directors:

Jim Quinn (Chairman)  
John Chadwick, Tom Patterson  
Mike Winterbottom, Ian Carr  
**General Manager:** T. Donovan

### Hon Doctors:

Dr. I. Crook, Dr. D. Atherton  
**Dental Surgeon:** Mr. N. Gibbison  
**Physiotherapists:** Mr. N. Hodgson  
Mr. A. Bonnelle (Adviser)

### Assistant Physiotherapist:

Mr. J. Watkins

### Hon. Secretary:

Mr. F. Howarth, B.A.

### Coach:

Peter Tunks

### Assistant Coach:

Eric Fitzsimons

### 'A' Team Coach:

John Prince

### Youth Development Officer:

Ian McCorquodale

### Hon. Consultant

**Orthopaedic Surgeons:** Mr. H. Thompson, Mr. D. Walker

### Safety Officer:

Roger Norris

### Official Timekeeper:

Mr. J. Roscoe

### Club Records:

**Record Victory:** 67-6 v Liverpool City, April, 1959

**Record Defeat:** 11-67 by Hull K.R., September, 1978

**Record Attendance:** 28,000 v Huddersfield, 24 February, 1912

**Record Receipts:** £37,505.50 v Wigan, 5th October, 1989

**Record Transfer Fee Paid:** £70,000 to Halifax for Tony Anderson, March 1990

**Record Try Scorer:** Reg Farrar, 49 tries, 1921-22 season

**Record Goal Scorer:** Bernard Ganley, 224 goals, 1957-58 season

**Record Point Scorer:** Bernard Ganley, 28 points v Liverpool City, April 1959

**First Game:** 21st October, 1876 v Stalybridge

**Highest Number of Points Scored:** Bernard Ganley, 2,881

**Most Appearances:** Joe Ferguson, 685

**Most Tries:** Pre 1900, Jack Hirst, 233

Since 1900, Alan Davies, 182

## TODAYS SPONSORS

are

### Club Sponsor:

CASTLEMAINE XXXX

### Executive Match Sponsors:

O.M.B.C. Economic  
Development

### Man of the Match Sponsors:

Monty's

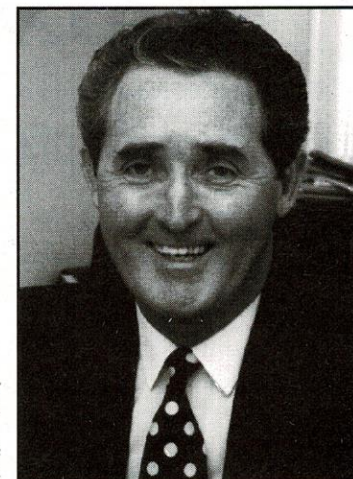
### Match Ball Sponsors:

CAPE BUILDERS

# FROM the BOARDROOM

by

CHAIRMAN JAMES QUINN



As the 1992/93 season ebbs rapidly to a close I would like to appeal for your help on two fronts which are vital to the immediate and long-term future of the club.

1. Will you please do your utmost, as supporters of our club, to attend the forthcoming public meeting which is to be held in the Civic Centre early in May on a date not yet finalised.

The board points out that this is a PUBLIC meeting and not one which is exclusively for shareholders.

In other words, if you have any interest at all in Oldham Rugby, as we strive to hold our own next season in the First Division, turn up at the meeting and please encourage as many of your fellow fans as you possibly can to do the same.

2. Thank-you for your support at today's Divisional Premiership play-off tie against Dewsbury. If we win, we will qualify for another home tie on Sunday, May 9th. Come to that match if you can and do your best to bring a friend or neighbour.

I know we did not play well last Sunday when losing at London Crusaders, but what a thrill our 11-man team provided in the last home match when, despite being two men down, we came from behind to beat Huddersfield.

We will be treating Dewsbury today with the greatest respect. I am not counting chickens. All I am saying is that if we are at home again next Sunday and if we can get to Old Trafford on May 16th try and do as you have done so loyally this season and turn up to back us.

It is just as important that as many fans as possible attend the public meeting. At this, we will put everyone in the picture about how the club stands financially and what we would like to do to prepare for the First Division and assure the club's successful future.

Appeals for help have gone out before. But this will be the first time that the current four-man board has publicly called the fans together for financial backing.

What can YOU do? Well, let me say at the outset how much the board appreciates what you are already doing as a fan, sponsor, shareholder or supporter of Cashline and Lifeline.

Somehow or other, we need to increase our income to give us a fighting chance to do well in the First Division.

The board met our commercial manager Miriam Lewis on Monday night for talks about new and continuing commercial ventures and matters such as admission prices for next season and any ideas Miriam had of her own in broadening our commercial base.

Further than that, we hope to issue a new sale of shares in the plc, not only to existing shareholders, but also to new ones. We feel there must be many of our fans who, for a variety of reasons, did not buy shares when they were first on the market and who would like to take the opportunity so to do now.

We are currently talking to our solicitors and accountants to approach the matter in the correct manner. It may be that we have to issue a new prospectus for new shareholders. This is currently under consideration.

What we would particularly like to do is to attract the interest of the town's business, professional and commercial life because we sincerely believe that a successful Rugby League team, just like a successful soccer team, would enhance the community's standing in the wider world and enrich the quality of life for the local work-force.

In the long run, a sporting club like ours can only be as successful as its support. I use the word in its widest sense. It will depend on the quality of its directors, the enthusiasm of its supporters, the goodwill of its townspeople and the hard work and commitment of its coaching staff and players.

Each is inter-related. The players must have fans to "support" them at the turnstiles. Fans need to have a team to cheer. Players AND fans need an administrative body that's where the directors come in - but it is pointless a board working hard unless it has a hard-core of support from which to draw inspiration.

We are all in this together, for the sake of Oldham Rugby. See you at the meeting.

JIM QUINN

THIS PAGE IS SPONSORED BY JENKINSON & CO.,  
ACCOUNTANTS, 6A LORD STREET, OLDHAM.  
TEL: 061-624 2550



# TODAY'S MASCOT

Congratulations to Mascot **Jennifer Turner**, who has been leading out the team at every match (home and away) in this promotion season of 1992-93.

The photograph shows Jenny leading out the lads before the victory over Huddersfield in the Challenge Cup Second Round on 14th February.

Let's hope she has the chance to finish off the season at Old Trafford, on Premiership Finals day.



## G. BARLOW & SONS LTD.

UNION STREET WEST, OLDHAM

*Coach Proprietors and Funeral Directors*

**Tel: 624 4301/624 9116**

**LITTLEMOOR  
MILL CARPETS**  
Littlemoor Lane  
Oldham  
(off Ripponden Road)

**FITTED  
CARPET  
SPECIALISTS**

Fitted by experts  
within 7 days

Ring for  
**FREE QUOTATION**  
**061-620 9866**

Our BED CENTRE  
always has a big  
range in stock - call  
in and see

## OGDEN & PARTINGTON

CERTIFIED  
ACCOUNTANT

D. J. TAYLOR, F.C.C.A.  
15 Queen Street  
Oldham OL1 1RD

**Telephone:**  
**061-624 1177**

A family business  
that  
looks after your  
family's needs . . .

## BEE FAMILY FINANCE

If you require credit for  
\*Household Goods  
\*Carpets  
\*Furniture  
\*TV's  
\*Car Repairs etc.  
JUST CALL IN AT THE  
**BEE**  
FOR FRIENDLY ADVICE

\*We can also arrange  
credit  
facilities for leading  
fashion shops  
in Oldham and  
Manchester.

**061-624 9908**  
21 Retiro Street,  
Oldham

\* WRITTEN DETAILS ON REQUEST \*

Your Hosts  
Stephen and  
Pauline Wilde  
Welcome You to

## The Clarence Hotel

Greenfield

Bar Meals -  
Breakfasts and  
Small Parties etc.

**Telephone 045**  
**7 872319**

OPEN 6 DAYS

## ROUGH'YEDS

become

## SMART'YEDS

at

## HEADHUNTERS

Professional Hairdressing  
138-140 Ashton Road,  
Oldham  
Tel: 061-624 2984  
also at

**Moston and Bolton**

## Payne's CONFECTIONERS LTD

73 Lees Road  
Oldham  
624 7391

Bakery  
Produce  
Supplied  
**FRESH  
DAILY**

## The Village Manor Restaurant

✱

HIGH STREET  
UPPERMILL  
SADDLEWORTH

✱

**Telephone:**  
**0457 873944**  
or  
**061-624 6056**

## "Monty's"



NIGHTCLUB

OLDHAM'S  
FOREMOST  
FREEHOUSE

Meals always  
available

17/21 Mumps,  
Oldham  
Tel: 061-620 9566



## PROCARE by Medipost Limited

- For all your team's medical requirements, eg. first aid, sports supports, strappings & medical bags etc.
- Contact Procure on 061 678 0233 for a full catalogue



- Suppliers to all professional and amateur clubs

## WE'VE CURED HEADACHES FOR THE ROUGHYEDS



Manufacturers of upholstery fillings for over a century, Platt & Hill make foam and fibre fillings of the highest quality right here in Oldham.

So reliable are our products, that Oldham RLFC have selected them to cushion the uprights of their goal posts.

In a way, you see, we've prevented headaches all round!

**PLATT & HILL**  
FOAM AND FIBRE FILLINGS

FIBRE FILLINGS DIVISION:  
Belgrave Mill, Keswick Avenue,  
Oldham, Lancs OL8 2LZ.  
Tel: 061-626 4638. Telex: 669550.  
Fax: 061-627 3265.

# COMMERCIAL CORNER

IS SPONSORED BY  
**THE SHEPHERDS BOY, HUDDERSFIELD ROAD, OLDHAM**  
**BECKS BEERS & HOME COOKED FOOD**

### ADRIAN ALEXANDER SIGNS ON AGAIN FOR OLDHAM.

Big Alex was a popular player here at Watersheddings not too long ago and he still takes a keen interest in the club. As well as coaching Oldham Rugby Union Club Adrian is now the new Landlord of the Sportsman pub on Broadway.

When we approached Alex and his wife Ginny with regard to them becoming Cashline Agents they didn't hesitate and they are currently recruiting new members from amongst their friends and customers - Well done Alex and Ginny!

If you would like to join us and become a Cashline Agent it could not be easier. All you need is around ten friends, relations or workmates to join your agency.

In return you will receive:-

1. 10% commission on all monies collected
2. 10% on any major prizes sold
3. The chance to win £50 every week in our free agents draw.

**CONTACT MIRIAM LEWIS - 061-624-4865**

### WIN TOMMY'S TOGS

Up for grabs today is Tommy Martyns old playing kit. Number six shirt, shorts and socks can all be yours if you are our lucky winner.

### LIFELINE WINNERS WEEK No. 27

**£1,000** - 0314 L.Ash - Littleborough

**£50** - 1274 E. Adams - Hollins

**Special Prize:** Dinner Service 0018 W. McGOVERN c/o Plant + Auto Werneth

### OLDHAM SUPER CASHLINE DRAW WEEK 9

<b>SUPER BONUS £500</b>	C0404	B. DOHERTY	011 Turpins
<b>£100 (Monday)</b>	M6312	S. MEHRA	300 Thornham News
<b>£100 (Tuesday)</b>	B5242	C. OLLERENSHAW	086 Meridian Centre
<b>£100 (Wednesday)</b>	A8193	W. KAY	075 Counter
<b>£100 (Thursday)</b>	E2599	B. HOOLEY	052 G. Watts
<b>£100 (Friday)</b>	F9173	Mrs. McCLENNON	155 D. Lawton
<b>£100 (Saturday)</b>	D2247	D. GILMARTIN	068 B. O'Connor
<b>£100 (Sunday)</b>	D1826	M. WOOD	110 Mrs. Wood

**AGENTS WEEKLY DRAW 176 (White Lion)**



Oldham R.L.F.C. trip to the 1993 Premiership Finals at Old Trafford, Sunday, 16th May.

- \* Complimentary Drinks at Parkfield Hotel.
- \* Depart Parkfield Hotel at 11.00 a.m. prompt.
- \* Four Course Meal at Lancashire County Cricket Club.
- \* Seated Match Ticket
- \* Executive Coach Travel
- \* Limited Availability
- \* Book Early
- \* Deposit £20.00
- \* Fully inclusive Price £49.00

**Contact: JUDY CAMPBELL or PETER YOUNG 061-626 4501  
or DAVID WHITEHEAD 061-627 4421**

**OLDHAM RUGBY LEAGUE CLUB**  
Celebration Dinner Dance  
and Cabaret Spectacular  
**ROYSTON ASSEMBLY HALL**  
**FRIDAY, 21st MAY**  
Superb Four Course Dinner  
Dancing to the Sounds of:  
**SATIN BRASS ORCHESTRA & SINGERS**  
Star Cabaret:  
The Dynamic **FRANKLYN JAMES**  
Ticket Details from:  
**JUDY CAMPBELL or PETER YOUNG**  
**061-624 4865**

# A WATERSHEDDINGS WELCOME TO DEWSBURY

**JACK ADDY**, Team Manager. Once again in charge at Dewsbury (this his second spell). Previously took the team into the First Division in the 1984-85 season.

**NORMAN SMITH**, Coach. A former Dewsbury player also in his second spell coaching with the club. Was "A" Team coach at Leeds five years.

**TREVOR LEATHLEY**, Coach. Now in his third year coaching the "A" Team. A former Fartown player of distinction.

**NATHAN GRAHAM**, Full Back. Started as a centre but now an established number one. A product of our former Colts side.

**DENNIS BAILEY**, Wing. Another former Colt, now in his eighth season at Dewsbury. Leading try scorer for the past three seasons.

**EDDIE ROMBO**, Wing. A former Kenyan Rugby Union International, joined Dewsbury from Leeds last season. Scored a try with his first touch of the ball in Dewsbury colours, ended with 22 tries and joint top try scorer with D. Bailey.

**MARQUIS CHARLES**, Centre. In his second spell at Dewsbury, first played for the club in 1989, before moving to Hull F.C. and Bramley.

**GARY SIDEBOTTOM**, Centre. Signed from Nottingham City at the start of last season. A former Bradford Northern player.

**CHRIS VASEY**, Centre. Also in his second spell with the club after a couple of seasons with Leeds. First played for Dewsbury in the 1982-83 season. One of the League's leading goal kickers.

**CHRIS SQUIRES**, Centre. Dewsbury's

longest-serving player, just completed his Benefit season, has well over 200 games to his credit. A fine utility player.

**PAUL DELANEY**, Half Back. An expensive purchase from Leeds at the start of last season. A former Great Britain International at Under 21. Originally signed from Dewsbury Moor A.R.L.F.C.

**PAUL SHUTTLEWORTH**, Half Back. Signed from Salford in 1985. Formerly with Batley Boys, where he gained both County and International honours as an Amateur.

**DARREN COLLINS**, Half Back. Another closed season signing from the Clayton (Bradford) Amateur Club, a BARLA Under 21 International.

**ANDY COOPER**, Forward. Signed from Leeds Colts as a Centre, has now developed into a strong-running ball-handling forward.

**GLENN BELL**, Forward. A New Zealander who joined Dewsbury after a couple of seasons with Featherstone Rovers. Now in his second term with the club.

**MARK HAIGH**, Forward. Signed from local Amateur Football in 1989, established himself in the senior side late last season.

**GLEN COUGHLAN**, Forward. A native of Australia, but now a permanent resident of the U.K. In his fourth term at Dewsbury with some 100 games and points under his belt.

**NEIL KELLY**, Forward and Club Captain. Another Dewsbury stalwart, first came to the club in 1982 but has had spells at Featherstone and Wakefield before returning to Dewsbury in 1988. Has spent the summer playing in Australia.

*THIS PAGE IS SPONSORED BY JENKINSON & CO.,  
ACCOUNTANTS, 6A LORD STREET, OLDHAM.*



# TODAY'S MAN in the MIDDLE

**COLIN MORRIS**

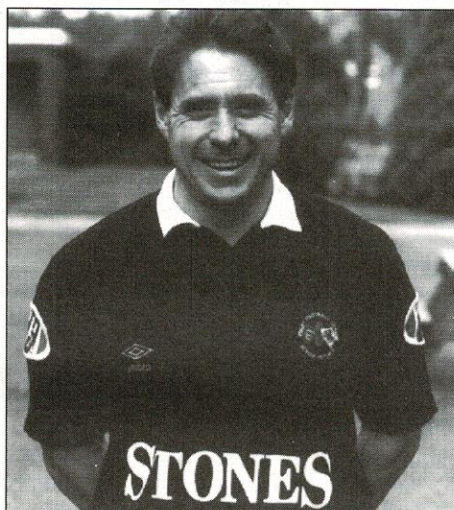
from Huddersfield

is

**TODAY'S REFEREE**

Born: 14.3.57

Grade One: 1989-90



**BELIEVE IT OR NOT, RUGBY LEAGUE  
AND RUGBY UNION DO AGREE  
ON SOMETHING.**



Official supplier of match and training balls to:

Rugby League



Welsh Rugby Union



B.A.R.L.A.



South African Rugby Union



Irish Rugby Union



Mitre Sports International Ltd., Bay Hall Works, Birkby, Huddersfield,  
West Yorkshire HD1 5AJ. Tel: 0484 537488. Fax: 0484 530042.

# TUNKS' TALKBACK



To all our supporters who made the long trip to the Capital last Sunday, I feel I should apologise for our woeful display.

It's true to say that London Crusaders played well in what I believe will be their last match at Crystal Palace. It's also true to say that the pitch was in an horrendous state, untouched since we last played there, but there can be no excuses for us playing so poorly.

It was especially disappointing to lose to The Crusaders, after such a gutsy performance just six days before, in our Easter Monday game with Huddersfield. I always knew that the Huddersfield game would be tough, with no quarter given, but I never expected to be faced with having to play out the whole of the second half with just 11 men. In a situation like that, all you can do is ask your players to give their all and hope for the

best. I thought everyone performed magnificently and it was a very proud coach who rushed to congratulate them when the hooter sounded. All the players were quick to acknowledge the part played by the home fans - thanks a million, you were tremendous!

On to today's game and it's back to sudden death football, as we take on the heavy woollen men from Dewsbury. We must start as favourites today but last week's result stands to remind us that we need to step up a gear or two, if we have designs on reaching Old Trafford and the Finals.

Enjoy the game.

## TUNKS TEASERS

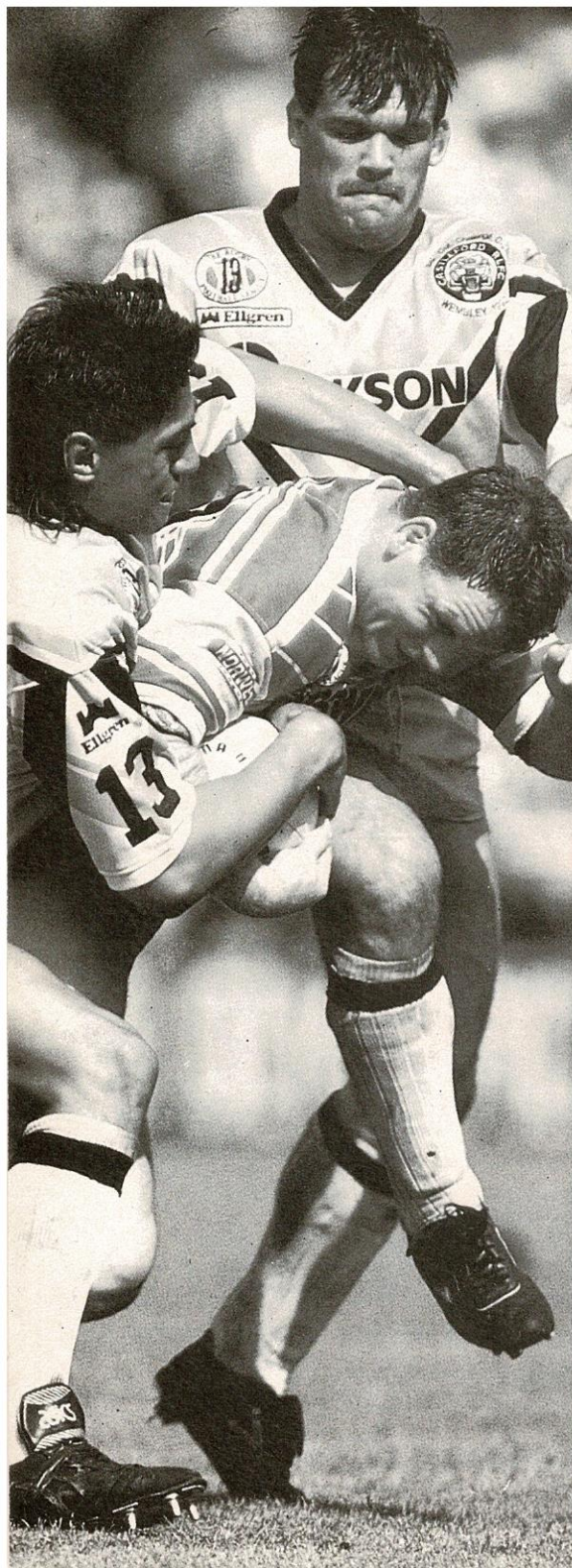
1. Who holds the record for most goals in First Class Rugby League?
2. Which team are nicknamed the "Cougars"?
3. What was the venue for this season's Great Britain v. France International match?
4. Who was top points scorer on the 1992 G.B. tour to Australia?
5. Who was captain of the 1982 Australian touring team?
6. In which season did the Premiership Final first take place at Old Trafford?
7. Who played loose forward for Oldham in last season's Second Division Premiership Final?
8. In which season did Featherstone first win the Challenge Cup?
9. Who was voted last season's "Young Player of the Year"?
10. Who holds the most points record for Oldham?

1. Jim Sullivan of Wigan. 2. Keighley. 3. Headingley. 4. Paul Eastwood. 5. Max Krillich. 6. 1986-87. 7. Ged Byrne. 8. 1966-67. 9. Gary Connolly of St. Helens. 10. Bernard Ganley.

## ANSWERS

THIS PAGE IS SPONSORED BY  
NORTHERN ROCK BUILDING SOCIETY, OLDHAM





## Don't be caught standing at the Stones Bitter Premiership Final.

To reserve your seat at this year's Stones Bitter Premiership Final on Sunday May 16th, call 'ticketline' now! Seating tickets are in big demand, for what is a 'festival' of rugby league that lasts the whole afternoon. Which means you get to see two exciting cup finals, as four of the leading clubs decide who will take the Stones Bitter Premiership, and Divisional Premiership honours in the charged atmosphere of Old Trafford.

Ticket prices for the whole event are £17.50, £14.50 or £11.50. So 'phone ticketline now, and you won't be caught standing on the day!

We accept Visa or Access. Alternatively you can pay by cheque or postal order by sending your order and remittance to the address below.



**TICKETLINE**  
**0532 629991**

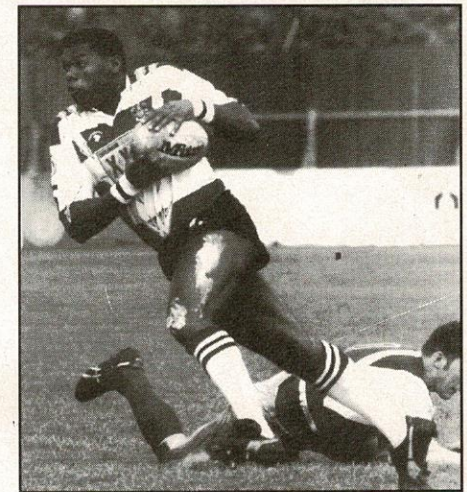
(Lines open Mon to Fri 9am to 5pm)

**OLD TRAFFORD, MANCHESTER, MAY 16TH.**

If ordering by post make cheques or postal orders payable to The Rugby Football League and enclose your full name, address and postcode. Also state clearly the number (and price) of ticket(s) you require. Please include a stamped, addressed envelope and post to: The Ticket Office, The Rugby Football League, 180 Chapeltown Road, Leeds LS7 4HT.

# PLAYER PROFILE

## HUGH GUMBS



**Full Name:** Hugh Gumbs.

**Date of Birth:** 4th September, 1970.

**Birthplace:** Leeds.

**Height:** 6 ft. 2 in.

**Weight:** 14½ stone.

**Favourite Drink:** Dr. Pepper.

**Favourite Food:** Chicken.

**Favourite T.V. Show:** Mork and Mindy.

**Favourite Music:** Soul, Jazz.

**Hobbies:** Squash; Golf.

**Previous Clubs:** Otley RUFC, Bradford Northern RLFC.

**Biggest Influence on Career so far:** Eddie McDonald, David Ward.

**Favourite Player:** Eric Grothe.

**Favourite Ground:** Headingley.

**Most Difficult Opponent:** All of them.

**Most memorable match seen:** State of Origin first game 91.

**Biggest Thrill:** Touring Australia - Students.

**Biggest Disappointment:** Losing Semi-Final Premiership, Sheffield v. Batley.

**Personal Ambition:** To play a game with Tommy Martyn.

**Person you would most like to meet:** Elvis.

**Have you ever been mistaken for anyone famous:** Too many to mention.

*THIS PAGE IS SPONSORED BY TANFIELD LTD.,  
TOWBAR & TRAILER CENTRE, CHAMBER ROAD, OLDHAM.  
TEL: 061-633 4872*



## OLDHAM ON TRACK TO OLD TRAFFORD

History repeats itself, as for the second year in succession Oldham meet Third Division Dewsbury in the Divisional Premiership play-offs.

Dewsbury managed to qualify to this tilt at Oldham by beating local rivals Batley, in the Third Division section of the play-offs last Sunday.

The opposition will be hoping to avenge last year's defeat, which resulted in a final score of 36-18 and a victory for Oldham. However, they are sure to face a tough challenge from Oldham, who will be determined to retrace their steps back to Old Trafford for the fourth time.

Dewsbury are a progressive Third Division club who have several exciting young players, who include: Paul Delaney, the former England Under 21 half-back; Under 21 squad member Nathan Graham; Academy International centre Darren Rogers and two 21-year-old forwards in Shane Williams and Mark Haigh.

CASTLEMAINE  
**XXXXX**

CASTLEMAINE



**XXXXX**



## TEAM CHECK

SUNDAY, 25th APRIL, 1993

### OLDHAM

TEAM CHANGES

1. WALLY GIBSON
2. SCOTT RANSON
3. IVA ROPATI
4. DARREN ABRAM
5. MIKE STEWART
6. TOMMY MARTYN
7. SEAN DEVINE
8. TINY SOLOMONA
9. RICHARD RUSSELL
10. MARK SHEALS
11. SHANE TUPAEA
12. IAN SHERRATT
13. SEAN TYRER
14. ROWLAND PHILLIPS
15. DAVID STEPHENSON

#### PENALTIES

1	2	3	4	5
6	7	8	9	10
11	12	13	14	15
16	17	18	19	20

#### SCRUMS

1	2	3	4	5
6	7	8	9	10
11	12	13	14	15
16	17	18	19	20

Referee: C. MORRIS

### DEWSBURY

TEAM CHANGES

1. NATHAN GRAHAM
2. EDDIE ROMBO
3. MARQUIS CHARLES
4. DARREN ROGERS
5. DENNIS BAILEY
6. PAUL DELANEY
7. PAUL SHUTTLEWORTH
8. GLENN BELL
9. NEIL KELLY
10. SHANE WILLIAMS
11. GLEN COUGHLAN
12. MARK HAIGH
13. GREG PEARCE
14. MARK BOWNASS
15. GARY WHITTAKER

#### PENALTIES

1	2	3	4	5
6	7	8	9	10
11	12	13	14	15
16	17	18	19	20

#### SCRUMS

1	2	3	4	5
6	7	8	9	10
11	12	13	14	15
16	17	18	19	20

Touch Judges: Mr. R. Duckworth (Red Flag)  
Mr. I. Muir (Yellow Flag)

## XXXX WELCOMES THE AUSSIE CRICKET TEAM

At this very moment, Castlemaine XXXX will be heralding the arrival of the Australian Cricket Team at a London press conference.

The team, headed by cricket veteran Alan Border, are touring Great Britain hoping to retain the Ashes.

XXXX, always with a finger on the pulse of major sporting events, will be sponsoring the team during the tour.

The famous XXXX branding is to appear on the player's shirts and will also be included in any cricket-related advertising or promotions which the event may generate.

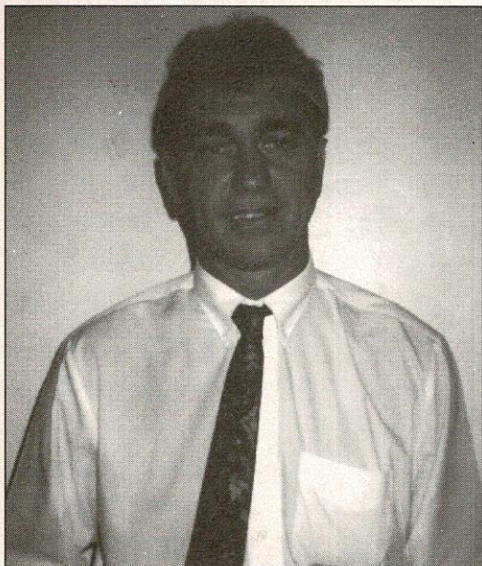
The XXXX name will gain maximum exposure, as the event is to receive around 12,000 hours of television coverage!

Consequently, XXXX are forecasting significant increase in sales of the famous Aussie brand.



CASTLEMAINE  
**XXXXX**





## 'A' TEAM ROUND UP

with COACH JOHN PRINCE

### ALLIANCE NEWS

At the end of my first season with Oldham RLFC, it is time to look back and reflect on what has certainly been a very challenging and at times, very frustrating season.

For the first time in many years as a coach, the side I have coached has not won a trophy. However, we may just put that right yet, for we have been invited to play in a nine-a-side competition at Surrey Heath on Friday night, the day before Wembley. We are only too pleased to do our bit to help foster the game of Rugby League in London.

Looking back on the season, we finished in seventh position out of 16 teams in the League, which, considering some of the teams we have had to field this season, is a reasonable performance.

I suppose the highlight of the season was our performances in the Quarter Final of the Alliance Challenge Cup, against the ultimate winners, Wigan. As coach Graham West said after the second game: "We had given them two hard games this season and even the mighty Wigan had to admit they were lucky to draw in the first game at Oldham".

At home we managed to string together an unbeaten run, going back to early October 1992, when we last lost a

**THIS PAGE IS SPONSORED BY BILL AND BRENDA ROGERS**

home game. However, the games we lost away cost us any chance of promotion, which has got to be our priority next season.

As I said at the start of the season you, our fans, would have to be patient. As with the first team, rebuilding takes time and at least we have made some progress.

Looking forward to next season, I can only say that there will be quite a few new young faces, as we have been watching and talking to a lot of talented youngsters all season.

Finally I would like to extend my personal thanks to all Club Officials, Staff and Players, for their help this season and a very special thanks to our very loyal fans for their support.

It is working with people like you that makes it all worthwhile.

Yours in Oldham RLFC

J. PRINCE

### YOUNGERS ALLIANCE FIXTURES SECOND DIVISION 1992/93



Saturday, 29.8.92	Sheffield Eagles	H 20-33 (L)	1.00 p.m.
Saturday, 5.9.92	Carlisle	A 28-18 (W)	12.00 p.m.
Saturday, 12.9.92	Keighley	A 28-24 (W)	2.30 p.m.
Saturday, 19.9.92	Salford	H 10-31 (L)	1.00 p.m.
Friday, 25.9.92	Ryedale York	A 14-22 (L)	7.30 p.m.
Saturday 3.10.92	Carlisle (Lancs C.C. Shield)	H 26-20 (W)	1.00 p.m.
Friday 9.10.92	Leigh	H 16-19 (L)	7.30 p.m.
Friday 16.10.92	Wigan (LS 2)	H 4-34 (L)	7.30 p.m.
Friday, 29.10.92	Salford	A 6-42 (L)	7.30 p.m.
Friday, 6.11.92	Doncaster (Cup)	H 64-8 (W)	7.30 p.m.
Saturday, 14.11.92	Carlisle	H 40-12 (W)	1.00 p.m.
Friday, 20.11.92	Huddersfield	A 28-18 (W)	7.30 p.m.
Saturday, 28.11.92	Workington (Cup2)	A 16-26 (L)	
Saturday, 5.12.92	Hemel Hempstead	H 58-10 (W)	1.00 p.m.
Saturday, 12.12.92	Swinton	H	1.00 p.m.
Friday, 18.12.92	Bramley	A	7.30 p.m.
Saturday, 2.1.92	Swinton	H	1.30 p.m.
Saturday, 15.1.93	Hunslet	H 50-10 (W)	1.00 p.m.
Thursday, 21.1.93	Leigh	A 20-30 (L)	7.30 p.m.
Wednesday, 29.1.93	Wigan (YA Cup 2)	H 22-22 (D)	7.30 p.m.
Wednesday, 4.2.93	Wigan (YA Cup 2 Rply)	A 14-32 (L)	7.30 p.m.
Saturday, 6.2.93	Dewsbury	A 10-34 (L)	2.00 p.m.
Saturday, 13.2.93	Workington	H 42-16 (W)	1.00 p.m.
Wednesday 17.2.93	Bramley	A 13-30 (L)	7.30 p.m.
Saturday, 20.2.93	Hemel Hempstead	A 14-25 (L)	2.30 p.m.
Saturday, 27.2.93	Doncaster	H 30-20 (W)	1.00 p.m.
Saturday, 6.3.93	London Crusaders	H 36-14 (W)	1.00 p.m.
Saturday, 20.3.93	Workington	A 24-29 (L)	2.30 p.m.
Wednesday 24.3.93	Swinton	H 50-16 (W)	1.00 p.m.
Saturday, 27.3.93	Huddersfield	H 70-16 (W)	1.00 p.m.
Saturday, 3.4.93	Swinton	A 10-41 (L)	2.30 p.m.

## WRIGLEY CLAYDON & ARMSTRONGS SOLICITORS

Complete Legal and Financial  
Service



PRUDENTIAL BUILDINGS  
UNION STREET, OLDHAM



Tel: 061-624 6811 (Oldham)  
or 0706 815712 (Shaw)  
Fax: 061-624 3743

Licensed Credit Brokers

## NEIL GIBBISON

*B.D.S., V.U. Manc.*

## DENTAL SURGEON

36 Oldham Road  
Uppermill  
Oldham OL3 6HV

Telephone:  
**0457 872108**

## Cascade Ford Jct. 3 - M63



"we're only 30 minutes away"



Over **100 USED CARS**  
in stock - always



51 BARTON ROAD, URMSTON

**Tel: 061-747 0544**

## OLDHAM R.L. SOCIAL CLUB SHEDDINGS

Tel: 061-624 0368

**LIVE  
ENTERTAINMENT**  
EVERY Wednesday, Friday  
and Saturday  
Last Orders 1.30 a.m.

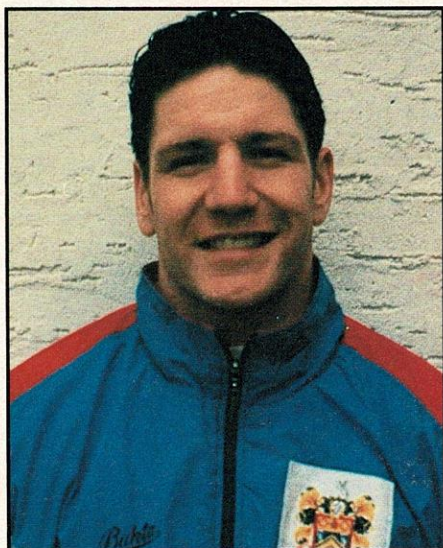
**FUNCTION ROOM**  
always available  
- FREE to O.R.L.F.C.  
shareholders  
Ring for details



# SKIPPERS' SPOT

with OLDHAM CAPTAIN  
RICHARD RUSSELL

The Power of the Press is a wonderful thing and I make no excuses today for taking full advantage and using my column for a shameless commercial. So here we go!



## O.R.L.F.C. PLAYERS

present a  
**SPORTSMAN'S DINNER**

THURSDAY, 6th MAY  
at SHEDDINGS CLUB

Speaker: MALCOLM LORD

Broadcaster and Journalist.

Comedian: CED BEAUMONT

Tickets £12.00 each.

Contact: SHANE TUPAEA

or ring:

PETER YOUNG or JUDY CAMPBELL

**624 4865**

## TENCH (sports) LIMITED

S4 Arndale Centre

Middelton

Manchester

Tel. 061-643-7515

### Cricket Specialists

Agents for:

Gray-Nicholls Slazanger

Gunn & Moore

Newbery

Stuart Surridge etc

THIS PAGE IS SPONSORED BY  
WILSON SPORTS TROPHIES, LEES ROAD, OLDHAM

## HYDE PRECISION COMPONENTS LTD

For all types of sub-contract machining  
- especially C.N.C. turning and milling.

"The ones who have never knocked on"  
Best wishes to Oldham for the season.

**Tel: 061-368 3446**

# WAR GAMES

THE RUGBY LEAGUE CHAMPIONSHIP. LIVE ONLY ON SKY SPORTS.



Watch the battle for the Rugby League Championship live on Sky Sports every Friday evening.

You'll see all the action, you'll get all the in-depth analysis. Because when it comes to covering all the sporting action, you'll find that Sky Sports is in a different league.

**£15 OFF\* ANY**

**SATELLITE SYSTEM**  
WHEN YOU REDEEM THIS VOUCHER AT  
COLORVISION STORES NATIONWIDE.

\*In cash goods or guarantees

**COLORVISION**

From September 1st 1992, Sky Sports will be a subscription channel of British Sky Broadcasting Limited. Astra satellite receiving and decoding



equipment is required to receive Sky Sports. Written details available from Sky Subscriber Services Limited, PO Box 43, Livingston, West Lothian EH54 7DD



**P L A Y E R S**

Opponents	Date	Ven.	Res.	F-A	Att.	1	2	3	4	5	6	7	8	9	10	11	12	13	14	15
LONDON C.	30.9.92	H	W	27-12	2,428	Tyrer	Ranson	Cocker	Rogali	Maxwell	Martyn	Devine	Sheals	Bates	McDermott	Meadows	Tupaea	Russell	Olsen	Solomona*
CARLISLE	6.9.92	H	W	38-14	2,292	Tyrer	Ranson	Cocker	Rogali	Gumbis	Martyn	Devine	Sheals	Patnick	McDermott	Meadows	Tupaea	Russell	Olsen	Solomona*
WARRINGTON	13.9.92	H	W	33-20	4,041	Tyrer	Ranson	Cocker	Rogali	Gumbis	Martyn	Devine	Sheals	Patnick	McDermott	Meadows	Tupaea	Russell	Olsen	Solomona*
LEIGH	20.9.92	A	W	28-24	2,886	Tyrer	Ranson	Cocker	Rogali	Gumbis	Martyn	Devine	Sheals	Patnick	McDermott	Meadows	Tupaea	Russell	Olsen	Solomona*
SWINTON	23.9.92	A	W	26-14	3,140	Tyrer	Ranson	Cocker	Rogali	Gumbis	Martyn	Devine	Sheals	Patnick	McDermott	Meadows	Tupaea	Russell	Olsen	Solomona*
FEATHERSTONE R.	27.9.92	H	W	16-8	3,246	Tyrer	Ranson	Cocker	Rogali	Gumbis	Martyn	Devine	Sheals	Patnick	McDermott	Meadows	Tupaea	Russell	Olsen	Solomona*
BRAMLEY	2.10.92	H	L	4-24	3,352	Tyrer	Ranson	Cocker	Rogali	Gumbis	Martyn	Devine	Sheals	Patnick	McDermott	Meadows	Tupaea	Russell	Olsen	Solomona*
ROCHDALE HORNETS	11.10.92	A	W	21-20	2,740	Tyrer	Ranson	Cocker	Rogali	Gumbis	Martyn	Devine	Sheals	Patnick	McDermott	Meadows	Tupaea	Russell	Olsen	Solomona*
BRAMLEY	18.10.92	A	W	23-16	1,560	Tyrer	Ranson	Cocker	Rogali	Gumbis	Martyn	Devine	Sheals	Patnick	McDermott	Meadows	Tupaea	Russell	Olsen	Solomona*
SWINTON	1.11.92	H	W	56-6	2,721	Tyrer	Ranson	Cocker	Rogali	Gumbis	Martyn	Devine	Sheals	Patnick	McDermott	Meadows	Tupaea	Russell	Olsen	Solomona*
REGAL TROPHY RD. 1	8.11.92	H	L	22-40	4,393	Gibson	Higgins	Tyrer	Rogali	Gumbis	Gibson	Devine	Sheals	Patnick	McDermott	Meadows	Tupaea	Russell	Olsen	Solomona*
CARLISLE	15.11.92	A	W	25-20	1,300	Tyrer	Ranson	Cocker	Rogali	Gumbis	Gibson	Devine	Sheals	Patnick	McDermott	Meadows	Tupaea	Russell	Olsen	Solomona*
HUDDERSFIELD	22.11.92	H	L	6-17	3,183	Tyrer	Ranson	Cocker	Rogali	Gumbis	Gibson	Devine	Sheals	Patnick	McDermott	Meadows	Tupaea	Russell	Olsen	Solomona*
REGAL TROPHY RD. 2	29.11.92	A	W	18-12	1,650	Gibson	Ranson	Tyrer	Rogali	Cocker	Martyn	Devine	Sheals	Patnick	McDermott	Meadows	Tupaea	Russell	Olsen	Solomona*
FEATHERSTONE R.	5.12.92	A	L	20-24	3,298	Gibson	Ranson	Christie	Rogali	Cocker	Martyn	Devine	Sheals	Patnick	McDermott	Meadows	Tupaea	Russell	Olsen	Solomona*
BRAMLEY	13.12.92	H	W			Gibson	Ranson		Rogali											
ROCHDALE HORNETS	20.12.92	H	W			Gibson	Ranson		Rogali											
SWINTON	1.1.93	A	W			Gibson	Ranson		Rogali											
BRAMLEY	6.1.93	H	W	36-0	2,233	Gibson	Bloem	Christie	Rogali	Ranson	Martyn	Devine	Sheals	Patnick	McDermott	Meadows	Tupaea	Russell	Olsen	Solomona*
ROCHDALE HORNETS	10.1.93	H	W	40-2	2,295	Gibson	Bloem	Christie	Rogali	Ranson	Martyn	Devine	Sheals	Patnick	McDermott	Meadows	Tupaea	Russell	Olsen	Solomona*
CARLISLE	13.1.93	H	W	47-22	2,653	Gibson	Bloem	Christie	Rogali	Ranson	Martyn	Devine	Sheals	Patnick	McDermott	Meadows	Tupaea	Russell	Olsen	Solomona*
ROCHDALE HORNETS	17.1.93	A	W	32-21	750	Gibson	Bloem	Christie	Rogali	Ranson	Martyn	Devine	Sheals	Patnick	McDermott	Meadows	Tupaea	Russell	Olsen	Solomona*
SWINTON	24.1.93	H	W	28-12	2,981	Gibson	Bloem	Christie	Rogali	Ranson	Martyn	Devine	Sheals	Patnick	McDermott	Meadows	Tupaea	Russell	Olsen	Solomona*
LONDON C. CUP RD. 1	31.1.93	A	W	34-6	1,180	Gibson	Bloem	Christie	Rogali	Ranson	Martyn	Devine	Sheals	Patnick	McDermott	Meadows	Tupaea	Russell	Olsen	Solomona*
FEATHERSTONE R.	7.2.93	H	W	14-52	4,332	Gibson	Bloem	Christie	Rogali	Ranson	Martyn	Devine	Sheals	Patnick	McDermott	Meadows	Tupaea	Russell	Olsen	Solomona*
HUDDERSFIELD	14.2.93	H	W	20-17	4,583	Gibson	Bloem	Christie	Rogali	Ranson	Martyn	Devine	Sheals	Patnick	McDermott	Meadows	Tupaea	Russell	Olsen	Solomona*
SHEFFIELD CUP RD. 2	21.2.93	H	W	56-16	2,947	Gibson	Bloem	Christie	Rogali	Ranson	Martyn	Devine	Sheals	Patnick	McDermott	Meadows	Tupaea	Russell	Olsen	Solomona*
BRADFORD N.	3.3.93	H	L	4-42	5,405	Gibson	Bloem	Christie	Rogali	Ranson	Martyn	Devine	Sheals	Patnick	McDermott	Meadows	Tupaea	Russell	Olsen	Solomona*
FEATHERSTONE R.	7.3.93	A	W	8-14	2,413	Gibson	Bloem	Christie	Rogali	Ranson	Martyn	Devine	Sheals	Patnick	McDermott	Meadows	Tupaea	Russell	Olsen	Solomona*
LONDON C.	21.3.93	H	L	20-27	2,269	Gibson	Bloem	Christie	Rogali	Ranson	Martyn	Devine	Sheals	Patnick	McDermott	Meadows	Tupaea	Russell	Olsen	Solomona*
BRAMLEY	31.3.93	A	D	20-20	350	Gibson	Bloem	Christie	Rogali	Ranson	Martyn	Devine	Sheals	Patnick	McDermott	Meadows	Tupaea	Russell	Olsen	Solomona*
ROCHDALE HORNETS	4.4.93	A	W	32-16	1,079	Gibson	Bloem	Christie	Rogali	Ranson	Martyn	Devine	Sheals	Patnick	McDermott	Meadows	Tupaea	Russell	Olsen	Solomona*
HUDDERSFIELD	9.4.93	A	W	32-18	1,929	Gibson	Bloem	Christie	Rogali	Ranson	Martyn	Devine	Sheals	Patnick	McDermott	Meadows	Tupaea	Russell	Olsen	Solomona*
LONDON C.	12.4.93	H	W	28-24	3,142	Tyrer	Ranson	Christie	Rogali	Bloem	Gibson	Devine	Sheals	Patnick	McDermott	Meadows	Tupaea	Russell	Olsen	Solomona*
	18.4.93	A	L	18-30	638	Tyrer	Ranson	Christie	Rogali	Bloem	Gibson	Devine	Sheals	Patnick	McDermott	Meadows	Tupaea	Russell	Olsen	Solomona*

# 1992/3 APPEARANCES & SCORERS

AS AT 5TH APRIL, 1993

	APP	SUB	TRIES	GOALS	DROP GOALS	POINTS
SEAN TYRER	24	4	8	7	-	46
SCOTT RANSON	22	-	12	-	-	48
STUART COCKER	14	-	8	-	-	32
IVA ROPATI	25	1	21	-	-	84
JOHN MAXWELL	4	1	1	-	-	4
TOMMY MARTYN	20	1	7	37	4	106
SEAN DEVINE	9	-	5	5	1	31
MARK SHEALS	31	-	5	-	-	20
IAN BATES	5	-	-	-	-	-
BARRIE McDERMOTT	9	5	2	-	-	8
MARK MEADOWS	9	5	2	-	-	8
SHANE TUPEA	25	3	1	-	-	4
RICHARD RUSSELL	26	1	6	-	-	24
BEN OLSEN	22	6	4	-	-	16
"TINY" SOLOMONA	22	7	5	-	-	20
HUGH GUMBS	14	-	6	-	-	24
RICHARD PACHNIUK	10	3	5	-	-	20
DAVID BRADBURY	18	5	4	-	-	16
PAUL JONES	3	4	-	-	-	-
WALLY GIBSON	30	-	14	-	-	56
STEVE WARBURTON	9	3	4	-	-	16
IAN SHERRATT	16	6	2	-	-	8
STEVE KERRY	24	-	7	82	3	195
DAVID STEPHENSON	11	3	2	-	-	8
GED BYRNE	1	1	-	-	-	-
JOHN HIGGINS	1	-	-	-	-	-
GARY CHRISTIE	13	1	12	-	-	48
JOE GRAZIANO	3	4	1	-	-	4
JAMIE BLOEM	11	1	2	-	-	8
MARTIN STRETT	4	3	-	-	-	-
DARREN ABRAM	9	-	3	11	-	22
NIGEL HESLOP	3	-	2	-	-	12
ROWLAND PHILLIPS	5	2	-	-	-	8
MIKE STEWART	2	-	1	-	-	4
ABRAHAM PHILLIP	1	-	-	-	-	-

## LEAGUE TABLE

STONES BITTER 2ND DIVISION 1992/93

	P	W	L	D	F	A	PTS	PTS DIFF
FEATHERSTONE R.	28	24	3	1	996	352	49	+644
OLDHAM	28	20	7	1	753	503	41	+250
HUDDERSFIELD	28	15	13	0	565	548	30	+17
ROCHDALE. H.	28	14	14	0	622	607	28	+15
LONDON C.	28	12	14	2	534	562	26	-28
SWINTON	28	10	18	0	411	636	20	-225
CARLISLE	28	6	19	3	454	721	15	-267
BRAMLEY	28	7	20	1	328	734	15	-406

THIS PAGE IS SPONSORED BY IRENE AND HELEN CALOW



# BACK PAGES

by MICHAEL TURNER

During the 1992-93 season this column has reviewed some of the more dramatic and outstanding moments in the history of Oldham RLFC and although there is probably much mention of the Easter Monday victory over Huddersfield elsewhere in this programme, I make no apology for continuing to enthuse about the match in this feature.

Taking example from an inspirational performance from skipper Mark Sheals, all the 11 players who finished the match can take immense pride in their performance.

Considering that the game had no bearing at all on Oldham's final League position, it was an extraordinary display of courage and pride, the way the team came back to overhaul and defeat the "Fartowners".

As the game now passes into the folklore of the club, I couldn't help but wonder how some of the great players mentioned in the column over the last eight months would have smiled with approval at the heroics of the men in red and white on that sunny Easter afternoon.

## DID YOU KNOW?

Oldham twice defeated St Helens Recs in the Lancashire Cup Final in 1924 and 1933.

When Oldham full back Alf Wood made his second international tour to Australia and New Zealand in 1920 he was, and still is the oldest ever Rugby League British Lion aged 36.

Huddersfield and Great Britain's legendary centre Harold Wagstaffe played his last first team match at Watersheddings on March 23rd, 1925.

Record appearance maker Joe Ferguson played his first game for the club at Morecambe on September 2nd, 1899 and his last at St Helens on April 14th, 1923, with over 600 matches inbetween.

**PHOTO FEATURE:** A rare action shot from the late 1920's shows Oldham centre Evan Davies attacking a crowded Hutchins stand end in the 12-2 Challenge Cup victory over Warrington on February 28th, 1925.

In attendance are Oldham players Joe Corsi and George Hesketh.



I am currently researching for a book covering the complete playing records and history of OLDHAM RLFC. If anyone has any old material connected with the club (photos, programmes etc) I would be very interested in viewing such items. Please contact: Michael Turner, 158 Balfour Street, Oldham OL4 1NS. Tel: 061-620 6005

# MIDASPORTS

NEW MARKET HALL,  
OLDHAM  
Tel: 061-678 6199

WARRINGTON STREET  
ASHTON-UNDER-LYNE  
Tel: 061-344 0550

## RUGBY LEAGUE SPECIALISTS

### FOR THE SUPPORTER

**NEW** GT. BRITAIN HOME & AWAY  
**NEW** AUSTRALIA HOME & AWAY  
**NEW** LEEDS & WIDNES HOME & AWAY  
**NEW** WIGAN HOME & AWAY  
**PLUS** REGULAR TEAMS **INC. OLDHAM**

AUSTRALIAN N.S.W. SHIRTS  
PENRITH, NORTHS, BALMAIN, EASTS,  
CANBERRA, NEWCASTLE, CANTERBURY,  
BRISBANE, PARAMATTA **PLUS**  
**NEW** QUEENSLAND STATE OF ORIGIN  
SHIRTS

### FOR THE PLAYER

HEADGUARDS  
MOUTHGUARDS  
SHOULDER PADS  
FOREARM PROTECTORS  
SHIRTS - SHORTS - SOCKS  
NEOPRENE SUPPORTS  
BOOTS - STUDS

### FULL TEAM KITS AVAILABLE:

UMBRO - HALBRO - ELLGREN

WE ALSO STOCK A WIDE RANGE OF SPORTS CLOTHING, FOOTWEAR & EQUIPMENT



# EVENING CHRONICLE

No. 1  
for  
local  
**NEWS**  
and  
**SPORT**





Socialist Group  
of the  
European  
Parliament

Glyn  
**FORD**  
Member of the European Parliament



**GLYN FORD,**  
Oldham's Euro-MP

Can be contacted at

46 Stamford Road,  
Mossley, Lancashire

**015 08E**

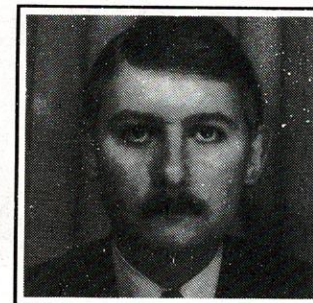
**TELEPHONE:**

**0457 83 6276**

**FAX:**

**0457 83 4927**

# QUOTE - UNQUOTE



with CLUBCALLS GED MASON

With the Second Division League Campaign now behind us, the team today sees, hopefully, the start of three games in the Divisional Premiership, ending at Old Trafford on Sunday, 16th May.

All things being equal, two weeks today will see Huddersfield once again visit Watersheddings and hopefully for the Semi-Final, it will be a game of thirteen against thirteen.

The win over Huddersfield here at Watersheddings on Easter Monday, was a superb performance. Peter Tunks thought it was a bit special. "I'm usually critical of the team's performance be it a win, draw or a losing display, but against Huddersfield I couldn't find fault with the team, for the players to dig deep and give that extra which they had to give to win. Just shows the great side of Rugby League and what a great team sport it is".

Looking to the Premiership, Tunksy had this to say: "We want a big finish towards the end of the season here at Watersheddings, we want to make sure we got to Old Trafford to finish off in style, so we've still got a lot of work to do".

Wally Gibson, who will be back here at Watersheddings for the First Division campaign, says there is still plenty left. "There's a long way to go. We are just going to take it one match at a time and get to Old Trafford, we have a strong squad here at Oldham and that's going to help us in the Premiership".

Mark Sheals, who was a guest on Clubcall earlier in the week, turned his attentions to the "Big League" and next season. "Here, we tend to play better against the better sides, as we have proven this season in the Cup games. Our problem has been keeping the concentration for the full 80 minutes and that is something we will certainly have to do next season".

It will not be much of a rest for the players when the season finally comes to an end will it Mark? "No, Peter has not told us his plans for the close season yet, but I don't think we will get more than a couple of weeks off. You have to be fitter in the First Division, so there is a lot of hard work to do in the summer".

Final word today goes to Captain Richard Russell, one of the Oldham players who has experienced the First Division. "It's a lot harder, faster and you are coming up against quality sides every week and hopefully it will bring out the best in our players next season. If everybody puts in the hard work in the summer, I'm sure we can stay up".

Finally, a reminder that Clubcall will be updated right across the close season, bringing you all the latest news and interviews from Watersheddings.

Enjoy your Rugby,

GED MASON.

# OLDHAM



# 0898 12 15 80

**FIRST WITH ALL THE NEWS & VIEWS  
REPORTS 24 HOURS A DAY, 365 DAYS A YEAR  
UP-TO-THE-MINUTE INFORMATION  
FIXTURES, TICKET AVAILABILITY, FEATURES AND MATCH REPORTS  
ALL THE INSIDE STORIES FROM WATERSHEDDINGS - UPDATED DAILY**

Call cost 36p/minute cheap; 48p/minute other times. (Prices correct at time of going to press). Clubcall, 1-9 Downham Road, London N1

# 0898 12 15 80



# ROGER HALSTEAD looks at PREVIOUS ENCOUNTERS

FULL BACK Duncan Platt led Oldham's charge into the semi-finals of the Divisional Trophy with an outstanding display in the 36-18 defeat of Dewsbury at Watersheddings on 26th April, 1920.

With two tries and six goals from six attempts, Platt scored 20 points to walk away with the man-of-the-match award on a day when Oldham easily demolished their Third Division opponents without reaching their best.

Dewsbury played a lot of good football, backed up keenly, used their support, had pace on the outside and were a good advertisement for the lower division.

They had skill and vision. But they lacked Oldham's superior all-round strength and class and their finishing lacked the quality of their approach play.

They had three first-half chances and they fluffed each one first when Eddie Rombo knocked-on, secondly when hooker Neil Kelly miskicked and thirdly when Dennis Bailey put down the final pass near the half-way line.

Despite making a lot of mistakes and missing a lot of tackles, Oldham scored six points by Platt (2), Scott Ranson, Chris Joynt and Richard Pachniuk (2) to put their superiority into perspective.

Top performers for Oldham were Platt, Ropati, Ranson and Warburton in the backs and Sherratt and Tupaea in the forwards.

Oddly enough, Ropati did not add to his 33 tries, but he had a tremendous first half in which he and Platt constantly tore huge holes in the Dewsbury defence.

Ranson took his opening try superbly in the fourth minute, off Ropati, and was always eager and lively, on both defence and attack.

Warburton, who scored two tries against Leigh in the previous game, replaced the injured Richard Russell at stand-off just before half-time and was soon carving through the Dewsbury defence just as he had caused havoc against Leigh.

Sherratt stole the limelight off his front-row pal, Street, with a powerful display, while Tupaea tackled everything that moved in a Dewsbury shirt and still took time out to produce a lot more on attack than usual.

Joynt was impressive early on when running out wide off Russell and he was denied two tries only by the speed of Rombo, who also pulled off a vital tackle on Warburton in the second half.

Byrne got to grips with his tackling after a shaky start and produced the hit of the match on Dewsbury loose-forward Glen Coughlan midway through the second half.

Neil Flanagan was top tackler in the backs (Tupaea won the overall award) and there were several vital tackles, notably by Nicklin on Bailey and Tupaea on Charles as Dewsbury threatened to come back into contention in the second half.

Oldham, given first use of the wind, set off at a cracking pace with early tries by Ranson and Joynt, both goaled by Platt, in a point-a-minute start.

Dewsbury looked like being over-run in the first half hour as Platt, Ropati and Joynt ripped them to pieces wide out, but they hit back against the run of play with a try by Haigh, goaled by Graham, in the 33rd minute.

Platt made his only mistake of the match when he failed to collect a Delaney high kick and the pressure ended with Haigh running wide of Sherratt to cross the line after good work by Charles and Bailey on the left.

Any serious thoughts of a Dewsbury revival were killed off quickly with the two tries by Platt either side of half-time, the first after playing the ball to himself, the second after a stunning break by Warburton.

The goals put Oldham 24-6 ahead, after which the teams took turns to score - Bailey for Dewsbury, Pachniuk for Oldham, Rombo for Dewsbury, Pachniuk for Oldham.

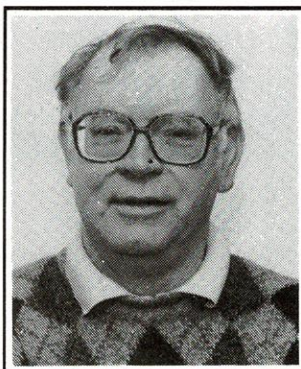
Pachniuk's support play was invariably good, but his handling of the final pass had let him down before he got it right to capitalise on a move by Byrne, Sherratt and Tupaea to score the first of his two tries.

Oldham's defence left a lot to be desired when Bailey and Rombo scored before Pachniuk scored the sixth try by crashing over from dummy half.

**OLDHAM:** Platt; Ranson, Ranson, Nicklin, Ropati, Tyron; Russell, Flanagan; Sherratt, Pachniuk, Street, Joynt, Tupaea, Byrne. Subs: Warburton, McDermott.

**DEWSBURY:** Graham; Rombo, L. Hughes, Charles, Bailey; Squires, Delaney; Bell, Kelly, Cocks, P. Hughes, Haigh, Coughlan. Subs: Vasey, Worthy.

Ref: R. Whitfield (Widnes) ATT: 2,514



**WE'RE  
THE  
OTHER TEAM  
TRYING FOR OLDHAM!**

## OLDHAM METROPOLITAN BOROUGH COUNCIL

We're trying for Oldham economically, environmentally, socially, educationally, recreationally, culturally and in so many other ways.

Just as Oldham Rugby is trying for all its supporters and the people of Oldham.

*Telephone inquiries about Council policies & activities to 061-678 4707.*

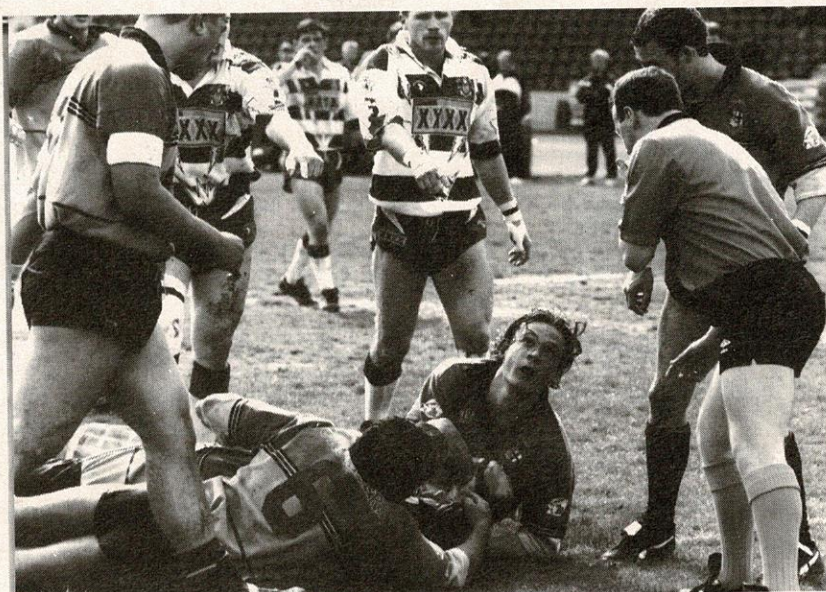


**OLDHAM**   
Metropolitan Borough



# PHOTOS

# ACTION



Photos: Courtesy of Oldham Evening Chronicle

**Darren Abram claims for an Oldham try before realising it was only Shane Tupaea with the ball**



**Young Stevo makes a break**

## BRITISH RUGBY LEAGUE COACHING SCHEME - COURSES FOR 1993

### At Watersheddings for Prospective Coaches

**LEVEL 1:** No previous experience. It lasts one day and costs a maximum of £10.00. Saturday, 22nd May, 9.00 a.m.

Staffed by Niel Wood and Eric Fitzsimons.

**Aim of Course:** Enjoyment, Organisation and Introduction to Skills Coaching. Lots of drills and small-sided games. (No Exam).

**LEVEL 2:** Four days/two weekends. Need some Playing and/or Coaching Experience. Costs £40.00 (which includes a Coaching Diary and Resource Pack). 12th, 13th/19th and 20th June.

**Aim of Course:** Coaching Techniques, Basic Skills, Decision-making, Team Organisation.

Two written Test Papers (tick box), on Laws and the

game. Two practical assessments. Candidates achieving a Grade 1 pass qualify for the prestigious Level 3 Course.

**Staffed by:** Neil Wood and Eric Fitzsimons.

**LEVEL 3:** For those Coaches holding Level 2 Grade 1 qualification.

Nearest venue is Manchester on 9th, 10th, 11th/17th and 18th July.

**LEVEL 4:** Manager/Coach Award.

Further information on all courses available from:

1. Souvenir Shop O.R.L.F.C.
2. O.R.L.F.C. Office Staff - **061-624 4865**
3. Neil Wood at Hathershaw Pool.
4. Eric Fitzsimons on **0706 372409**.

### SHOP PRICE LIST

REPLICA SHIRTS (ADULTS)	£29.99	SHIRT NUMBERS	99P
REPLICA SHIRTS (CHILDRENS)	£24.99	CAR ROLLER BLINDS	£5.00
REPLICA SHORTS (ADULTS)	£12.50	R.L. TRIOS CARD GAME	£1.00
REPLICA SHORTS (CHILDRENS)	£8.50	AUTOGRAPHED RUGBY BALLS	£10.50
LAMBSWOOL SWEATERS	£24.50	MINI RUGBY BALLS	£5.00
SOFT COLLAR SWEATSHIRTS	£12.50	HEADBANDS/WRISTBANDS	£0.75
QUARTERED SWEATSHIRTS	£12.50	GLOVES	£1.75
CREW NECK SWEATSHIRTS	£12.50	PEN/KEYRING SET	£1.50
HOODED SWEATSHIRTS	£12.50	PEN/NOTEBOOK SET	£1.60
POLO SHIRTS	£12.50	INDIVIDUAL PLAYERS T SHIRTS	£2.00
WHITE DRESS SHIRTS	£12.50	ON-TOUR T SHIRTS	£4.00
SINGLE DUVET SETS	£15.00	BABIES DUNGAREES 6/12, 12/18, 18/24	£5.50
BERMUDA SHORTS	£3.50	BABIES SWEATSHIRTS 6/12, 12/18, 18/24	£4.50
TIES	£9.95	DUNGAREES/SWEATSHIRTS SET	£9.00
SPORTS BAGS	£5.99	BABIES POTTY	£3.50
BEDROOM BINS	£5.00	BABIES DRINKING CUP	£1.00
DESK TIDIES	£2.25	PUMP BAG	£2.00
TOOTHBRUSH HOLDERS	£0.50	BABIES ALL-IN-ONE SUIT	£4.50
SOAP TIDIES	£0.50	DRILL TOPS	£12.50
SCARVES (STRIPED)	£2.50	PENCIL CASE	£1.50
SCARVES (JAQUARD)	£3.99	CLOCKS	£9.95
BOBHATS	£2.50	PENS	£0.25
FLAT CAPS	£2.00	CIGARETTE LIGHTERS	£2.00
BASEBALL CAPS	£2.99	CHILDRENS TRACKSUIT	£12.50
BEANY HATS	£2.00		
PENNANTS	£3.25/£2.75		
SUN VISORS	£2.95		
RUGBY NUTS	£2.50		
MUGS	£1.50		
METAL BADGES	£1.50		
SEASON TICKET HOLDERS	£2.75		
BABY GROS	£1.50		
MINI KIT CAR HANGERS	£1.99		
LADIES BRIEFS	£3.50		
MIXED FIBRE SWEATERS	£10.00		
BATH TOWELS	£5.50		
CAR STICKERS	75P £1.00		
SEW-ON BADGES	£1.00		

### LEATHER GOODS

MANICURE SET	£2.25
TIDY SET	£1.99
HANDYMAN SET	£2.50
PENSION BOOK HOLDER	£1.75
KEY CASE	£1.50
BOOKMARK	£0.75
KEYRING	£1.00
COMB IN CASE	£1.25
CHILDRENS PURSE	£1.50