

Leeds RLFC

In conjunction with the Weetwood Police Community Involvement Unit

PLAYER CARD COMPETITION

SUPER PRIZES

SPORTS BAGS

RUGBY BALLS

COMPLIMENTARY TICKETS

PENS

COMPETITION ENDS SOON

ENTER OUR PRIZE DRAW NOW

Take your full set of 20 cards to:

Weetwood Police Station, Otley Road, Leeds 16.

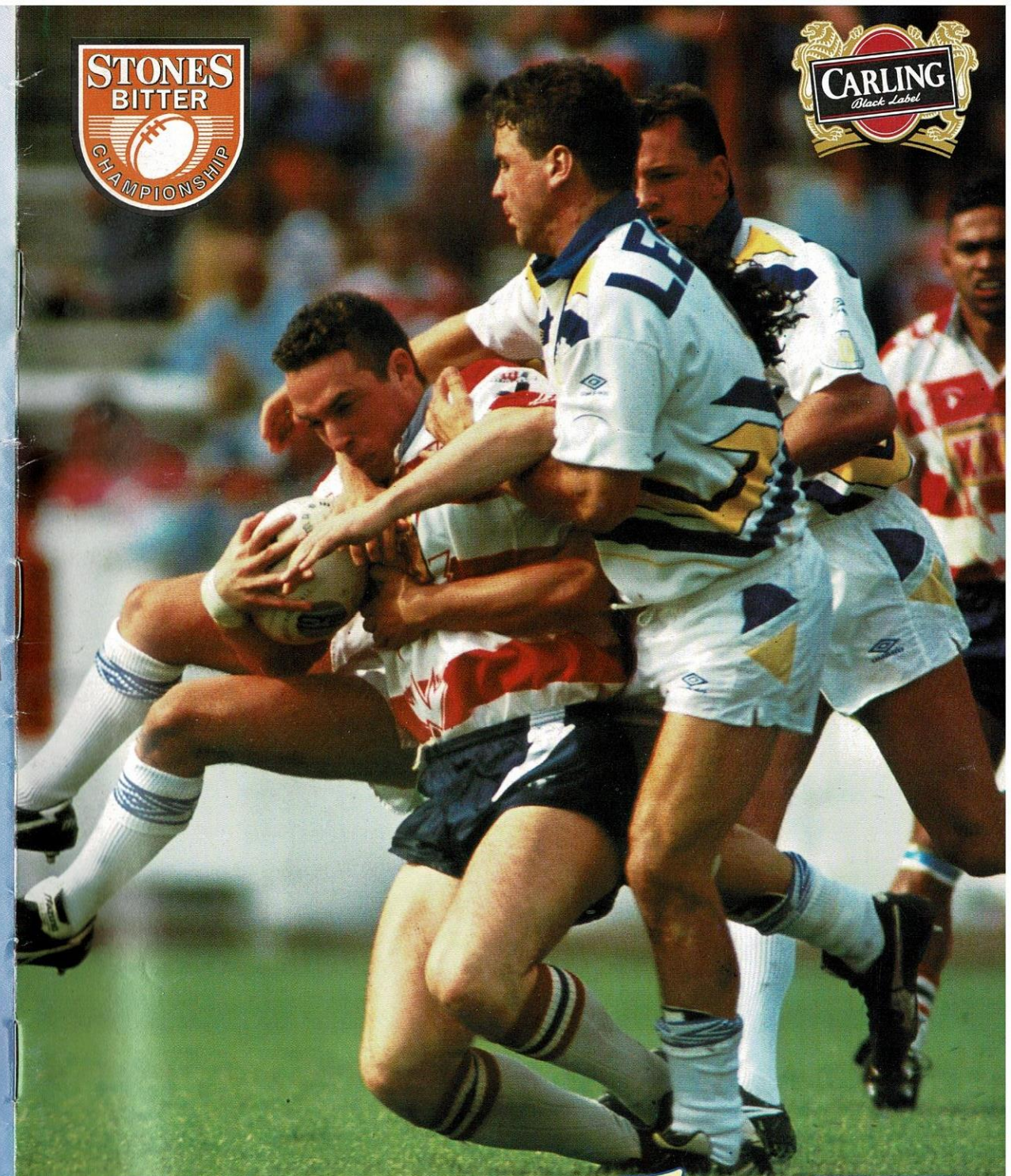
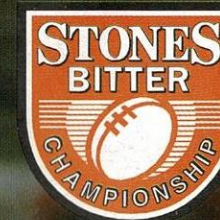
BEFORE THURSDAY MARCH 31st 1994

Be sure to supply your full name, address and age. Your card collection will be returned to you.

DETAILS OF WINNERS WILL
BE ON DISPLAY IN THE
PROGRAMME ON APRIL 10TH

Sponsored by

British Gas
North Eastern



Leeds



LEEDS V OLDHAM Sunday, 6th March, 1994. Kick off 3.00 p.m.

£1.20

*Travel in style with the Official
Leeds R.L.F.C. Travel Club to the
Silk Cut Challenge Cup semi-final*

Leeds v St. Helens

*at Central Park, Wigan
Saturday, 26th March, 1994
Kick-off: 2.15 p.m.*

*Return coach travel to Central Park from Bass Headingley.

*Coaches depart 11.00 a.m. from Headingley.
COST—£5.00 Adults, £4.00 Juniors (under 16).

Bookings can now be placed. Contact Leeds R.L.F.C.
Travel Club, Bass Headingley, St. Michael's Lane,
LEEDS LS6 3BR.

Tel: 0532 786181 (Credit Card Hotline).

Office Opening Hours: Monday to Friday 9.00 a.m. to 7.00 p.m.
Saturday 9.00 a.m. to 12.00 noon.

Leeds



LEEDS R.L.F.C. TRAVEL CLUB - TRAVEL IN STYLE

DOUG LAUGHTON

IT IS probably fair to say that the worst result we have had this season was the defeat at Oldham in October. It was not just that we lost the game it was the manner of the defeat. I like to feel though that since then, although we have lost games, we have been going in the right direction. Certainly last week's performance against Bradford was a joy to behold. Not only did we win the ball game, the whole atmosphere and the behaviour of the crowd as a whole was first class—in marked contrast to the debacle at Hull the previous Sunday.

How anyone can allow microphones to be lowered into a crowd is beyond me. In fact, I would go so far as to say that they are inciting a riot, as proved to be the case with rival fans getting stuck into one another. I have often felt that the battle should be on the pitch within the rules of the governing body and I am sure the governing body will take steps to ensure that this carry on is not allowed to continue. The last place I would have wanted to be with my children would be standing under the score board at Hull.

There were a few things about the Bradford game which pleased me. Obviously the way the two youngsters put the game beyond Bradford when they had us under the cosh, was something else. I also thought that the way the team and the fans responded to one another after the game, is the right way. A lot has been said about Peter Fox—well I'll tell you what, I have always admired the Fox and he came to me after the game, shook hands and said "well done, it was richly deserved!" It takes a man to do that, and, a bit like myself, he sat in the dug-out, not in the stands with the microphone. We have chatted about that before and there are probably points for and against both systems. Certainly, up in the stand one does not have to take the flak that one sometimes receives whilst sitting in the dug-out. That walk from the pitch down the tunnel at Widnes and Hull is not a very pleasant experience. You feel a bit like a chimpanzee in a cage and sometimes I feel that the people on the outside of the cage are the ones who should be in it! Mind, as the great Bill Shankly once said, "it isn't a matter of life and death—it's more important than that!" I was on a radio



show which he hosted when he came out with that comment and I confess that I couldn't stop giggling for the rest of the show. The reason I was on the show was because my team was going to Wembley and 'Shanks', who has been on numerous occasions, gave me a tip—"Give them plenty of ice cream". Well for about four months after, the players would be taking the Michael out of me by saying "What does Shanks say—plenty of ice cream!"

He also came out with another 'pearler' on the same show. He said, "I tell the boys, when you have got the ball in front of the net, put it in—and we will discuss your options later!"

He also said that when a game is won, winning the next one is the most important thing and today's game is very important to us. We need to start climbing steadily up the League because a club of our standing should be finishing in the top two every year. That is an unobtainable goal now, but when you look at our remaining fixtures, of the nine games left we have six at home and three away. If we reversed everything and had started the season off with more at home than away, then quite possibly we could be in a challenging position. It does help to win games when you are winning. Sometimes when you are losing, you wonder where your next result is coming from.



GROUND

St. Michael's Lane, Headingley, Leeds, LS6 3BR.
Telephone: 0532 786181. Fax: 0532 754284.

BOARD OF LEEDS C.F. & A. CO. LTD.

President: N. Shuttleworth, CBE
Chairman: D.W. Greenwood CBE
Vice Chairman: Sir Noel Stockdale, DFM
Chief Executive: A.G. Davies
Directors: F. Bartlett, M.G. Crawford,
A.G. Davies, H. Jepson, R. Shuttleworth,
R.M. Stockdale,
J. Warham (R.L. Council Member).

EXECUTIVE MANAGEMENT:

Gen. Man./Company Sec.: M.G. Dooley.
Financial Controller: R.A. Crosland
Commercial Manager: A. Watson.
Stadium Manager: H.M. Stokely

COACHING STAFF:

Team Manager/Coach: C.D. Laughton
Alliance Team Coach: P. Fletcher
Player Coach: E. Hanley
Academy Coach: D. McGrath
Physiotherapist: S. Walker.

CLUB DOCTORS:

Dr. S. Brennan, Dr. P. Lanfear.

Programme Designed and
Produced by Tobin Design.

Programme Editor: Andrew Whitaker.

Photography by Peter Heston, Dave Williams,
Yorkshire Post, Sig Kasatkin and
Melway Photos.

Typeset and Printed by
Engraving Services Ltd., Manchester.



WELCOME TO BASS HEADINGLEY

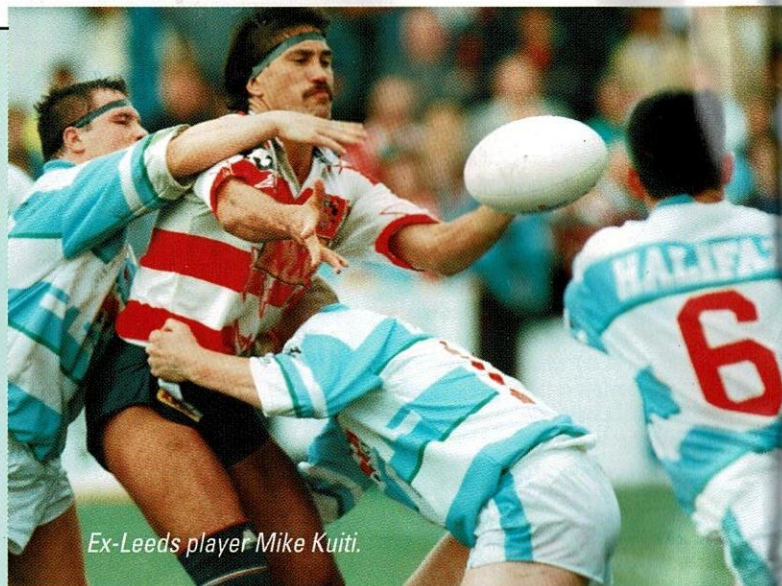
3

OLDHAM entered season 1993/94 in optimistic mood led by a man acknowledged as one of the brightest young coaches in the world game, Australian Peter Tunks.

The uncompromising former Canterbury, New South Wales and Australian prop, who first made his name in England during an inspirational one season stay at Headingley seven years ago, was regarded as a man capable of leading Oldham into a much more promising new era.

And the respect in which Tunks was held within the game was confirmed with Oldham's summer capture of Tunks' former Test colleague, two time Kangaroo Bob Lindner. Tunks' presence was the swaying factor as Lindner turned his back on the Australian domestic scene to end his career in England.

Lindner is a current Queensland State player, just the shot in the arm Oldham were looking for and things looked rosy for the Watersheddings outfit and their ambitious Chairman Jim Quinn. Seven months on,



Ex-Leeds player Mike Kuiti.

FIGHTING FOR SURVIVAL

however, and much of the optimism has died away as Oldham have been plunged headlong into a fight for their only recently returned First Division life. Tunks, too, has gone, a victim of his own frustration at the financial restrictions he was forced to work under.

Yet, it could all have been so different for Oldham. They defeated Leeds during a good spell earlier in the season and should have picked up more victories during that time. The general inexperience of the squad, though, proved costly as games which should have been won,

were lost—most notably a televised early season game against title chasing Bradford Northern.

The setbacks became too much for Tunks and his resignation thrust even more pressure onto the square shoulders of Lindner. He has taken over the player-coach role at the club despite persistent rumours that new Australian club the Western Reds are eager for his services. Lindner managed to inspire what could prove to be a vital victory over Widnes in his first game in charge and is now the central figure in the battle to get above the likes of

DANGER MAN

BOB LINDNER

Oldham's recently appointed player-coach Bob Lindner is a key figure in his sides fight for survival.

As a player, Lindner has proved himself in the toughest of arenas with Queensland and Australia, and remains one of the most respected and explosive forwards in the world game.

It will, though, be his ability to lift his side as a coach as well as player which may prove crucial in the relegation dogfight.

Already Lindner has inspired Oldham to a vital victory over Widnes but the question is whether he will be able to keep that going and whether he will fare any better than predecessor and fellow Aussie Peter Tunks.

Lindner is, then, facing a tough challenge but one he no doubts relish and he has made no secret of the fact that his main motive for coming to England was to pick up coaching experience before entering the Big League in Australia.

He will also, no doubt, want to do well against Leeds and the Aussie powerhouse is a man to watch this afternoon.

Wakefield Trinity and Hull K.R.

Alongside him, he can call upon the services and experience of other comparative veterans such as former Leeds forwards Andy Goodway and Kiwi Mike Kuiti. The two former Test players had fairly short stays at Headingley but have proved themselves at the highest level and help form the basis of a back row and pack which should be able to match it with the best on their day. Another New Zealander, Shane Tupaea, is also a powerful force in the front row along with prop Ian Sherratt. Leeds-born youngster John Clarke, outstanding for the BARLA Young Lions in Australia this

summer, has enjoyed an excellent debut season in the Big League and will be pushing for a spot at number nine, with David Stephenson also a possible challenger. Barry McDermott and Dave Bradbury have also featured in the first-team this season, while the backline looks to have a fair balance of pace and power.

1990 Great Britain Tourist Shaun Irwin, who went to the Watersheddings in the deal which took Richard Russell to Wheldon Road, usually forms a centre partnership with highly-rated ex-Rochdale centre Darren Abram. On the wings three more relative newcomers to the club have been very much to the fore. Former England Rugby Union star Nigel Heslop was a big capture for the club last year and seems to have recovered well after an early injury setback, while underrated ex-Wakefield winger David Jones and Scott Ranson will also be looking for places. At half-back, Tunks brought ex-Warrington and Wigan player Martin Crompton, and ex-Salford livewire Steve Kerry to the club. He also secured the services of pacy Huddersfield full-back, the Australian Wally Gibson, and this is very much a team that Tunks built from scratch.

They will have to learn to survive without him, however, and are in desperate need of grabbing a lifeline at Headingley this afternoon.

LAST FIVE GAMES

Warrington	23	Oldham	6	(LC)
Hunslet	20	Oldham	30	(CC)
Sheffield	28	Oldham	14	(LC)
Doncaster	20	Oldham	0	(CC)
Oldham	22	Widnes	12	(LC)

Today's Rivals



Leeds



are pleased to offer you the chance to join the 1994/1995 Executive Club

and if you confirm your booking by 30th April 1994 you can join for the 1994/95 season at the exact same 1993/1994 price.

There are just 110 places available for the 1994/1995 season and with well over half of these places already taken the remaining places are being snapped up, so make sure you book your place now.

The Executive Club was launched at the start of the 1993/1994 season and has proved to be a tremendous success with each member enjoying a superb day of hospitality at EVERY Leeds RLFC home game and, as you can see below the package offers excellent value for money.

THE 1994/1995 EXECUTIVE PACKAGE INCLUDES...

- ★ Private membership for EVERY Leeds RLFC first team home fixture, including Cup matches.
- ★ Limited membership of 110.
- ★ Three course meal provided at Leeds RLFC first team games.
- ★ Directors box leather upholstered seat in the main stand.
- ★ Matchday programme.
- ★ Car park pass (1 per double membership).
- ★ Private bar facility on matchdays in the Executive Club situated in the Headingley Pavilion.

PRICE: £500 incl. VAT PER PERSON.

This works out at just £25.00 per match including VAT based on 20 matches during the season.

Telephone: (0532) 786181/(0532) 304242
for a booking form or call at the ticket office.

THE 1994/1995 EXECUTIVE CLUB

After the glory of their Cup exploits, Leeds returns to the more mundane but nevertheless vital world of League Football this afternoon with the need to get back on the winning trail after the setback at Hull.

The battle for Premiership spots really is wide open at this stage and a top four spot is still not beyond Leeds, though the defeat at the Boulevard was a big blow to their hopes. Warrington, Bradford and Wigan look to have secured the top three spots even if recent form suggests all three are beginning to crack under the strain.

They look to have enough breathing space to get away with the luxury of the odd slip up but Castleford are still catchable although it is going to be very difficult as they are clearly a side in form.

Whatever, Leeds have to make sure of their top eight spot first and need to keep their improved League form going, not least because a winning side always enters Cup frames in a more positive frame of mind and it would be a shame to let the good work of the past couple of months fall away now.

BACK TO BASICS

Oldham, meanwhile, are in even more desperate need to do well this afternoon as they are embroiled in a real dogfight with Wakefield and Hull K.R. to avoid the drop. Oldham, of course can count Leeds as one of their first League wins to date and have always given a reasonable account of themselves at Headingley in the past few seasons. They will have been boosted too by the recent victory over Widnes, Bob Lindner's first game in charge at the watersheddings after taking over from Peter Tunks.

Their main relegation rivals Hull Kingston Rovers and Wakefield

LEAGUE TABLE

	P	W	D	L	F	A	Pts
Bradford Northern	20	17	0	3	563	367	34
Warrington	21	16	0	5	434	280	32
Wigan	18	15	0	3	515	271	30
Castleford	20	13	1	6	525	290	27
Halifax	22	12	2	8	464	381	26
St. Helens	21	12	1	8	445	367	25
Leeds	21	10	1	10	416	384	21
Featherstone R.	20	10	1	9	413	418	21
Sheffield Eagles	21	10	1	10	453	492	21
Hull	20	8	2	10	304	327	18
Salford	22	9	0	13	406	469	18
Widnes	20	9	0	11	344	407	18
Wakefield Trinity	21	7	0	14	287	442	14
Hull K.R.	21	6	0	15	318	560	12
Oldham	21	5	0	16	363	450	10
Leigh	21	1	1	19	250	595	3

also have difficult tasks today, though both are at home. Hull K.R. face in-form Castleford and Trinity face St. Helens so it could be a major bonus if any of the troubled trio emerge with anything from the latest round of League matches. Oldham know that as well as anybody and will be fired up for today's encounter.

It looks though as the relegation squabble will go right down to the wire and Oldham's upcoming trip to Hull K.R. may ultimately decide the outcome of the issue. Oldham are currently two points behind Rovers, but the Humberside outfit seem to be struggling more than anybody right now and it isn't easy to predict where their next win will come from.

Elsewhere, this afternoon doomed Leigh face a thankless task against near rivals Wigan at Hilton Park. Despite their supposed problems, the Central Park giants are once more in the semi-finals of the Challenge Cup and on the trail of the Championship with games in hand over both Bradford and Warrington. And something has to give at Wilderspool where the Wire and Northern clash. It will be interesting to see how the two sides respond to their Cup exit and a win for Northern, in particular, would put them in a tremendous position while at the same time possibly signalling the end of Warrington's own title dream.

In the other games today, Featherstone are at home to Sheffield and Widnes play Hull in games which will effect the top eight situations.



BIG LEAGUE REVIEW



cleaning & hygiene services

FOR TOTAL BUILDING CARE

PHONE FREE 0800 591780

G. & J. Spencer plc

RINGWAYS



MOTOR GROUP

WHITEHALL ROAD LEEDS LS12 5NL

LEEDS (0532) 634222

TWO young men with the Rugby League world at their feet captivated Headingley last Sunday with performances which will live long in the memory and have already earned both a place in Leeds folklore.

Francis Cummins and Graham Holroyd simply produced the games of their lives on the day of their biggest and most important test as professional footballers—a test they passed in a fashion few could possibly have predicted.

Francis, incredibly only 17 years of age, scored as memorable an individual try as the famous old stadium has ever seen and his dazzling footwork and change of pace left the huge Bradford defenders grasping at thin air for the entire 80 minutes. Graham, meanwhile, proved one of the key players for Leeds in

THE DAY THE YOUNGSTERS CAME OF AGE

probably had every right to do so—and, though obviously nervous, the way they handled their first real major exposure to the media, TV and press, was admirable. These are two young players with their feet on the ground and they are a credit to the new Leeds youth policy, the apprenticeship scheme and the Academy set-up.

As Graham pointed out there was still a long way to go, both for Leeds and on a personal level. He explained: "We played

and that if we achieved that then we would go through.

Bradford put us under a lot of pressure early on but we were tackling very well and Francis' try gave everybody a big lift. My try was fairly straightforward. I'd been keeping my eye out for an opportunity like that and it paid off. It was a great feeling to go under the posts."

The Cummins try, of course, was a major talking point for the media and when he emerged from the dressing room after Sunday's Cup tie young Francis was literally swamped by press and TV crews wanting to talk to him about his sensational effort. It must have all been a bit bewildering, particularly as it had barely sunk in with Francis himself. "The whole day was an unbelievable experience," he said. "The try was a bit of a blur because it all happened so fast.

frontline

both attack and defence, producing a display of calmness and maturity which belied his tender age, 18.

It was the stuff of dreams alright and without parallel in the recent history of Leeds. Perhaps only the heroics of teenager Kevin Dick at Wembley in 1977 stands comparison with the impact made by youngsters Cummins and Holroyd upon Challenge Cup football at such an early age. But every bit as refreshing as their performances was the fact that when it was all over and the applause, though still ringing in their ears no doubt, had died down the youngsters were able to talk about the game just passed in such a rational and level-headed way.

There was no chance of them getting carried away with the glory of it all—even if they

very well against Bradford and we all feel we can get to Wembley and win the Cup but we aren't taking anything for granted. I was very pleased with the way things went for me and the team but nobody is getting complacent, Doug won't let us. We have to go out and do it all again in the semi-final but I'm sure with the fans behind us again like they were against Bradford we will do it."

The ice-cool teenager, who appears to suffer no nerves however big the occasion, also revealed that the preparation for the Bradford game both for the team and on a personal level was excellent. "I think we knew we'd got everything right going into the match. I had a great nights sleep before the game and felt confident entering the match which is important. We knew what we are capable of

One moment I was taking the ball in near our line and the next I was in the clear. I just headed for the open spaces but when the defenders got across to me I thought I'd be tackled. I couldn't believe it when I was crossing the try line."

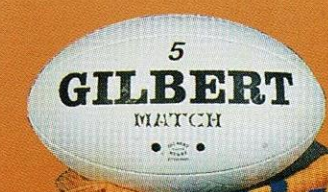
Francis echoed the views of Graham regarding Leeds' Challenge Cup hopes, believing Wembley was well within their grasp. "Playing alongside such great players as Ellery and Garry and all the other experienced stars really gives the younger players tremendous confidence and I'm learning all the time. It's just great to be part of it all, there's a very good feeling in the team that this is going to be our year. But we know it is going to be very tough from here and we are prepared for that."

Andrew Whitaker

WELL it was quite a day last Sunday, wasn't it? And not a bad night either I should think. Rarely have I seen a more ecstatic Leeds side at the end of a game and their mood reflected the feeling on the terraces.

It all had shades of '78 and that unforgettable quarter-final. The faces had changed, of course, though Foxy was still about, as has the style and pace of the game no doubt, but the tension, the emotion and the elation were as powerful as ever—and we got a repeat of the great Atky tries of '78.

In fact, all the talk in the programme of Atky's match proved strangely prophetic and for John Atkinson, read young Francis Cummins. If anything, and I can't believe I'm saying this, Francis' try was probably even more dramatic and extra-ordinary than the great man's first try all



DO I LIKE THAT!

those years ago. Whatever it was certainly as memorable, particularly as Francis is at such a different stage of his career than John was back then. All, in fact, that was missing from Francis' try was the sight of a desperate David Barends launching into a swan dive with arms flailing, although for one moment there last week I could have sworn I saw him!

It was uncanny too how Atky had spoken in such glowing terms of young Francis before Sunday's game. He said he had more potential than Jason Robinson and no Leeds fan would argue after Sunday's heroics.

Talking of Sunday's programme, I didn't have much to say last

week because I was shepherded out of the way to make room for a glossy colour picture of Kevin Iro, no doubt to appease his growing army of Leeds fans—many of whom happen to be girls for some reason.

But if Kevin stays in this form the more colour pics of him the better I say, though I did feel a bit like Jonathan Davies having to make way for the big New Zealand chap like that.

I think we should also put plenty about the Leeds versus St. Helens semi-final of '78 in the next couple of programmes because all those column inches about Atky's quarter-final in the same year last week seemed to do the trick and after all this is now a time when any superstitions we might have come to the fore.

So whatever you did last Sunday make sure you keep doing it right up to the semi-final and beyond. We can't afford to take any chances. ■

IF the most fervent Leeds fan in the world had been asked to come up with a script for this Challenge Cup quarter-final tie they surely couldn't have even dreamt of a storyline to match the real thing. It was simply beyond our wildest dreams.

For a start, who could have even imagined that Leeds might produce a performance which would eclipse their display in the last round against Warrington—a display regarded by many as their finest Cup performance of the decade so far. or, indeed that a slightly-built 17-year-old with only a few first-team games to call upon for experience, would conjure up the try of a lifetime amid the

MATCHFACTS

LEEDS . . . 33

BRADFORD . . . 10

Challenge Cup Round Six

Leeds Tries—Hanley 2, Lowes,

Cummins, Holroyd, Fallon.

Goals—Holroyd 5. DG—Holroyd.

Bradford Tries—Newlove, Clark.

Goal—Fox.

Ht—12-4

Att—22,435

heat and frenzy of this struggle. But Leeds and young Francis Cummins, (Peter Fox really must have nightmares about that Leeds number five shirt), did just that and the results were as spectacular as Headingley as ever witnessed, the scenes at the finish as joyous as I can remember. And the fact that Leeds achieved all this in front of a magnificent crowd of more than 22,000 added to the glowing feeling of satisfaction. So often in the recent past a big crowd at Headingley and a big occasion has usually meant a big let-down. Not this time, Leeds did it in style and in a manner which more than made up for any disappointments over the past few seasons. This was worth the wait.

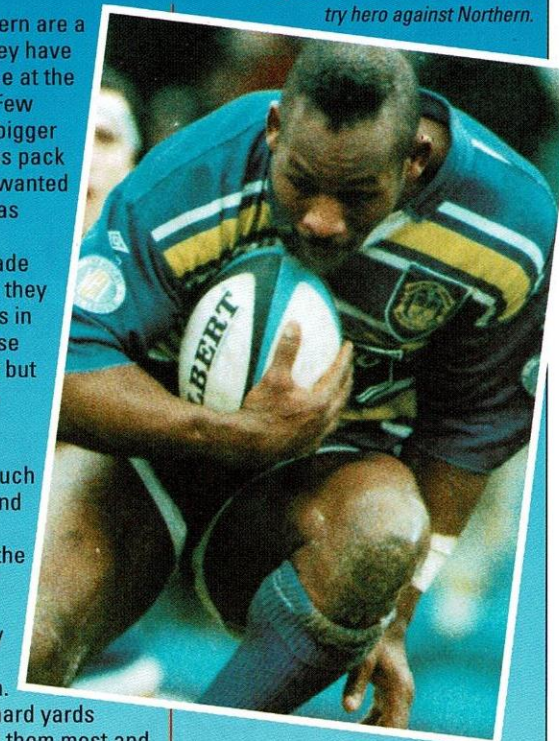
Bradford Northern are a good side and they have earned their place at the top of the table. Few sides possess a bigger or more tenacious pack and they clearly wanted victory every bit as much as Leeds.

The heavy brigade threw everything they had at the Loiners in an incredibly tense first half-an-hour but the courage with which Leeds withstood the onslaught said much about the spirit and self-belief now running through the team. Everybody worked for each other and nobody worked harder than Neil Harmon.

He supplied the hard yards when we needed them most and refused to wilt in the face of the Bradford barrage. The pack responded to Harmon's lead and their bravery was personified by Gary Mercer who came back from a heavy first minute knock to produce an inspired display of controlled aggression. He is definitely one tough cookie.

Behind them all, Alan Tait was magnificent. Two glorious last man cover tackles saved Leeds in the crucial early period of the game and the flying Scot dealt with every kind of Deryck Fox kick admirably. Leeds then withstood the best Bradford had to throw at them and responded on the half-hour with, given the importance of the occasion and the youth of the scorer, the best individual try I have personally ever seen at Headingley.

A star was born from the moment Francis Cummins beat the first line of defence 15 yards from his own line and was away on a sensational path to glory. It was storybook stuff and the



interception try by the equally impressive Graham Holroyd on the strong of half-time added to the rising anticipation of the Headingley faithful. This was to be our day and how!

Garry Schofield and the inspirational skipper Ellery Hanley took over in the second half and when the pair combined with a little help from Gary Mercer for Ellery's first try the game was as good as over. Graham Holroyd's drop goal made things even safer and then came the spectacular finish to end all finishes which sent the home fans into raptures. A breath-taking length of the field try by the irrepressible James Lowes—heavily involving the entire and explosive Kiwi connection and Schoey—a second for Ellery and a fine effort by Jim Fallon rounding off a wonderful afternoon's entertainment which will live long in the memory. Warrington, now Bradford, bring on the Saints!

ELIDA GIBBS



Our fleet at your disposal...

Your local Cleanaway fleet can handle all types of industrial and commercial, dry and wet waste—quickly and efficiently



A GKN-Brambles Enterprise

Cleanaway Limited, Calder Garage, Ravensthorpe Road, Dewsbury, West Yorks WF12 9EG
Tel: Dewsbury (0924) 46746

Making the least of waste



COLIN RHODES

The Reliable Roofer

Established 1965



PRICES YOU CAN AFFORD

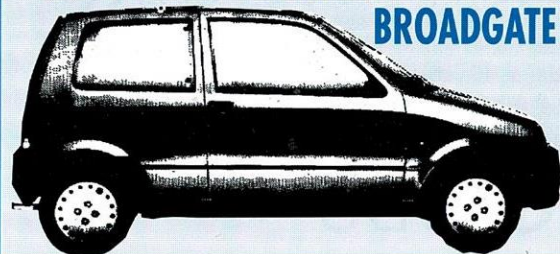
SLATING, TILING, GUTTERING
CHIMNEY MAINTENANCE
PROPERTY REPAIRS, GRANT WORK
Our speciality is stripping and re-roofing



Domestic • Industrial • Commercial • Ecclesiastical
ESTIMATES FREE—WORK GUARANTEED
39 Fearnville Terrace, Leeds LS8 3DT
Telephone 731010

YOU'RE IN THE WINNING TEAM WITH WHITEHEAD & HINCH Ltd

BROADGATE LANE, LEEDS. Tel: (0532) 585056



LANCIA



12 LATEST NEWS... RING LEEDS CLUBCALL-0891 121530

ONE of Rugby League's most familiar faces, and voices, David Howes has now stepped down from his post as the game's public affairs executive after a 20 year association with the code.

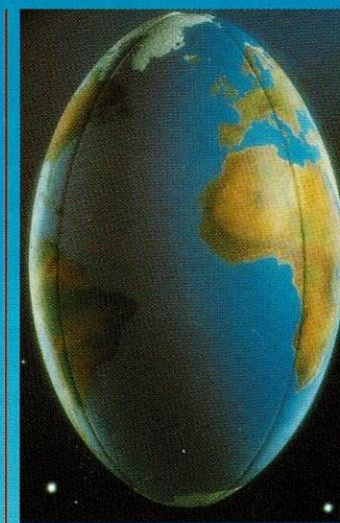
David, who joined the Rugby League back in 1974 as the rather less grandly sounding first ever public relations officer for RFL headquarters, has been a fine ambassador for the game and a very key player in some of the code's most innovative moves.

Twenty years ago, Rugby League was on its knees but the new secretary-general David Oxley and the fresh-faced Howes, then a 23-year-old feature writer with the Hull Daily Mail, teamed up to provide the code with a badly needed injection of new ideas and new hope.

The two David's actually went out and promoted the game, in itself a pretty big innovation, and their confidence and contention that there was nothing wrong with the game itself merely the way we all handled and administered it was a view which gradually began to shape a new and more positive era.

Howes and Oxley had the courage of their convictions, being at the forefront of the drive for clubs outside Rugby League's traditional boundaries and ensuring that the profile and perception of the game was raised in the right circles. They did much to shed the cloth-cap image and their success as gates and interest took an upswing made them the envy of other sports administrators.

David Howes, in particular, proved a promotional whizz-kid. He could sell the game like few other people in its history and aside from the attendant



DAVID HOWES SAYS FAREWELL

sponsorship deals which that approach brought it in, he was a master of orchestrating the big occasion. The bold move to take Test matches to Old Trafford and Wembley paying off handsomely with Howes promoting the event. A man with a quick-wit and plenty of patter, David also did much for Rugby League players themselves and was a willing participant in many a Testimonial evening. He was perhaps the grassroots frontman that the Oxley/Howes duo needed and it seems strange that the two David's will no longer be a part of the scene at Chapeltown Road.

After 20 years, David, though not severing his ties completely with the game, felt it was time to move on and is fulfilling a long cherished ambition to run an

independent consultancy specialising in PR, sponsorship, event management and public speaking—all things he does very well—and everybody at Leeds RLFC would like to wish him the very best for his new career.

AN OPEN LETTER TO THE GAME FROM DAVID HOWES

"It has been an honour and a pleasure to serve the greatest game in the world for the past two decades.

New career plans centre on continuing to work for the game from another direction, being able to specialise in the promotion of Rugby League at central and club level, while extending the client base into commerce and other sports.

I would like to say a big thank you to everyone connected with Rugby League for their support over the past 20 years... to the clubs, coaches and players for providing the material with which to work... the League's Council and Board of Directors for their leadership of the game... to the spectators for being so passionate and caring about the sport which thoroughly deserves its family image... to those outside the professional ranks who nurture the grass roots without seeking praise or payment.

I am looking forward to being equally productive for Rugby League during its more exciting period of projection and development and maintaining the bond of friendship which is such an integral part of our superb sport."



Acorn Glass (Leeds) Ltd

1 Church Lane, Meanwood,
Leeds LS6 4NT

Glass Merchants and Glaziers

Telephone: (0532) 741131

Glass cut to size Sliding Doors
Mirrors Safety Glass

All types of Double Glazing

24 HOUR BOARD UP
SERVICE

**EMERGENCY NUMBER
LEEDS (0532) 504334**

IRWINS CONSTRUCTION GROUP

are pleased to be
associated with
LEEDS RUGBY LEAGUE F.C.

**General Building Contractors, Bank Fitters,
Specialist Contractors in Alterations,
Refurbishments and Security Work.
Joinery Specialists. Shopfitters.
Design and Build Services.**



Specialist Joinery

Low Hall Road, Horsforth, Leeds LS18 4EW.
Tel: (0532) 506811. Fax: (0532) 391285 or 506933.
Also at: London, Reading, Birmingham and Selby.

The Irwin Group is a member of Cambell & Armstrong PLC.

THE IRWIN GROUP LTD.



> HEATING
> PLUMBING
> AIR CONDITIONING
> DESIGNED and INSTALLED

MORFITTS

H. Morfitt & Son Ltd.

16, St. Michaels Lane, Leeds LS6 3AJ.

Telephone: 0532 758631. Fax: 0532 304396.

Building Services Engineers

20 YEARS AGO

In seven years 1973-74 Leeds met Oldham twice in First Division football, winning one of the games and drawing the other.

The victory came at Headingley in August on the opening day of the season as the Loiners proud to have too much pace and power for the

Watersheddings outfit. Syd Hynes led the way by scoring four tries in a 46-2 rout and John Holmes landed eight goals. Phil Cookson also powered over for two tries, while Bob Haigh, David Jeanes, Keith Hepworth and John Atkinson were the other scorers.

It was very different in the return game at the Watersheddings in early March, however. Leeds struggled to obtain an 8-8 draw with Jeanes and Alan Smith grabbing tries and Keith Hepworth landing a vital drop goal—then worth two points

15 YEARS AGO

Oldham had fallen upon hard times by season 1978-79. They had just spent their second season in the Second Division and finished in a dismal ninth position.

There appeared to be little on the horizon for Oldham but a much improved effort in the following season—1979-80—saw them win promotion back to the First Division. In 1978-79 the

Second Division, though, was dominated by big-spending Hull who won all their league games as well as knocking Leeds out of the Challenge Cup.

Leeds had struggle of their own, meanwhile, in the First Division suffering first round exits from all the Cup competitions during the campaign with the exception of the last one, the Premiership.

In that competition it all came right for Leeds who, thanks to the undersoil heating, were able to avoid a horrendous fixture pile-up to finish fourth in the First Division.

They went on to beat St. Helens and Wigan to reach the Premiership Final where they defeated Bradford Northern in some style.

10 YEARS AGO

Oldham were back in the First Division by season 1983-84 and enjoyed an excellent start to the season with an opening day win over the Loiners at the Watersheddings.

Mick Taylor scored two tries and there were touchdowns for Mick Worrall and Ray Ashton with Mick Parrish doing the business with the boot in a 25-16

success. Oldham who also had the likes of Andy Goodway in their side back then had really got some team together and Leeds, who scored tries through Kevin Rayne and Kevin Dick were well-beaten.

The return game on the second of January at Headingley was also a titanic struggle but Leeds, enjoying purple patch at this

stage of the season, worked desperately hard for their 16-12 success with Mark Laurie outstanding.

Kevin Dick, Keith Rayne and Paul Prendiville scored tries for the home side and David Creasser kicked two goals. Ian Birkby and Mick Worrall scored the Oldham tries and Parrish tagged on a couple of goals.

5 YEARS AGO

Leeds enjoyed a double success over Oldham in season 1988-89 but typically the game at the Watersheddings nearly September was a real hum-dinger.

Kevin Meadows scored a couple of tries for the home side and Des Foy and Mike Ford also touched down in a game which Oldham led 16-14 at the interval. Leeds powered back in the

second-half though to eventually run out 28-22 winners.

Carl Gibson and Garry Schofield both scored two tries apiece, Paul Medley grabbed one, and David Stephenson kicked four goals.

It was much different in the return at Headingley, however, on New Year's Day 1989 as Mal Reilly's side ran riot.

In front of 14,487 fans Phil Ford

scored a memorable debut hat-trick as the Loiners strolled to a 48-4 success. John Bentley scored a try and kicked eight rare goals in the win, while 'ET', Cliff Lyons, Roy Powell and Gary Price also touched down. Big Aussie prop Sam Backo also had a memorable game for Leeds with his try-creating kick and chase effort bringing the house down.

Date	Opponents	K.O.	Result	Att.	1	2	3	4	5	6	7	8	9	10	11	12	13	14	15
Aug. 27	Castleford	7.30	W 21-12	8,738	Tait	Fallon	Iro	Innes (17)	Irving (26)	Schofield	Gregory	Harmon	Lowes	Scott	Mercer	Schultz	Hayley (27/05)	Holroyd (17/ST)	Parrish (S9)
Sept. 5	WARRINGTON	3.00	W 21-19	11,723	Tait	Fallon (17)	Iro	Innes	Irving (17,26)	Schofield (106)	Gregory	Harmon	Lowes	Scott	Mercer	Schultz	Hanley	Holroyd (S7)	Rose (S13)
Sept. 10	Wigan	7.30	L 18-32	14,407	Tait	Fallon	Iro	Innes	Irving (65)	Holroyd	Schofield	Harmon	Lowes	Scott	Mercer	Schultz	Hanley (27)	Rose (S10)	Parrish (S9)
Sept. 19	HULL K.R.	3.00	W 42-6	9,087	Tait	Fallon	Iro	Innes	Cook (17)	Holroyd (16)	Schofield (11)	Harmon	Lowes	Scott	Mercer	Rose	Hanley (37)	Cummins (27/32)	Hastings (S11)
Sept. 26	Salford	3.00	L 18-23	4,943	Tait (17)	Scates	Iro (17)	Innes (27)	Cook	Holroyd (16)	Schofield	Harmon	Lowes	Scott	Mercer	Rose	Hanley	Hastings (33)	Prokes
Oct. 3	HULL	3.00	D 22-22	10,301	Tait	Scates	Iro	Innes	Irving (65)	Schofield (17)	Stephens	Harmon	Lowes	Scott	Mercer (17)	Eyres (17)	Hanley	Holroyd (S10)	Rose (S11)
Oct. 10	Oldham	3.00	L 6-21	5,079	Tait	Fallon	Irving (16)	Innes	Scates	Schofield (17)	Stephens (17)	Harmon	Lowes	Rose	Scott	Eyres	Mercer	Holroyd (S4)	Schultz (S11)
Oct. 19	Featherstone Rovers	7.30	L 20-22	4,829	Tait (17)	Fallon	Iro	Irving (46)	Scates (17)	Schofield	Stephens	Harmon	Lowes	Rose	Scott	Eyres (17)	Mercer	Holroyd (S7)	Schultz (S11)
Oct. 24	NEW ZEALAND*	3.00	L 6-35	6,898	Tait	Fallon	Iro (17)	Irving (16)	Scates	Schofield	Stephens	Harmon	Lowes	Rose	Scott	Eyres	Mercer	Holroyd (S4)	Gregory (S7)
Nov. 13	Salford (Regal Trophy 2)	3.00	L 12-21	1,789	Tait (17)	Fallon	Iro (17)	Irving (26)	Scates	Schofield	Stephens	Harmon	Lowes	Maskill	Mercer	Eyres	Vassilopoulos	Innes (S9)	Gregory (S7)
Nov. 17	ST HELENS	7.30	L 18-21	7,074	Tait (17)	Fallon	Iro	Innes	Irving (66)	Holroyd (17)	Stephens	Harmon	Lowes	Rose	Mercer	Eyres	Hastings (11)	Scates (S10)	Scott (S8)
Nov. 21	LEIGH	3.00	W 27-18	6,482	Tait (21)	Cummins (17)	Irving (17)	Innes	Irving (66)	Holroyd (17)	Stephens	Harmon	Lowes	Maskill	Fallon	Eyres	Mercer	Hanley (S11)	O'Neill (S8)
Nov. 28	Bradford Northern	3.00	L 26-36	7,538	Tait (17)	Fallon (17)	Iro (27)	Innes	Irving	Holroyd (30,36)	Donohue	Rose	Lowes	Scott	Mercer	Eyres	Hanley	Hastings (S4)	Beatty (S10)
Dec. 1	Widnes	7.30	L 6-8	4,767	Tait	Fallon	Iro (17)	Cummins (16)	Scates	Vassilopoulos	Donohue	O'Neill	Lowes	Rose	Mercer	Eyres	Hanley	Schultz (S8)	Scott (S14)
Dec. 5	Sheffield Eagles	3.15	W 31-9	4,254	Cook	Fallon (17)	Hassan	Scates	Scates	Holroyd (65,066)	Stephens (17)	O'Neill	Lowes	Rose (17)	Mercer (17)	Eyres	Hanley (17)	Donohue (S7)	Hastings (S10)
Dec. 26	WAKEFIELD TRINITY	11.30	W 20-16	14,541	Tait (17)	Fallon (17)	Iro	Schofield (17)	Cummins (27)	Holroyd (16)	Stephens (17)	O'Neill	Lowes	Rose	Mercer	Eyres	Hanley (17)	Donohue (S7)	Harmon (S10)
Jan. 2	Haltwhistle	3.00	W 19-12	9,433	Tait	Fallon	Iro	Irving	Cummins	Holroyd (46)	Stephens	Harmon	Lowes	Rose	Mercer	Eyres	Hanley (17)	Donohue (S7)	Harmon (S10)
Jan. 5	CASTLEFORD	3.00	W 8-4	10,825	Tait	Fallon	Iro	Irving	Cummins	Holroyd (36)	Stephens	Harmon	Lowes	Rose	Mercer	Eyres	Hanley (17)	Donohue (S7)	Harmon (S10)
Jan. 9	Warrington	3.00	L 18-37	6,559	Tait (17)	Fallon	Irving	Cummins (17)	Scates	Holroyd (36)	Stephens	Harmon	Lowes	Rose	Mercer	Eyres	Hanley (17)	Donohue (S7)	Harmon (S10)
Jan. 14	WIGAN	7.30	L 14-26	12,158	Tait	Fallon	Iro (17)	Cummins (17)	Fawcett	Holroyd (46)	Donohue	Harmon	Lowes	Rose	Mercer	Eyres	Hanley (17)	O'Neill (S12)	Harmon (S10)
Jan. 23	Hull K.R.	3.15	W 24-4	4,200	Tait	Fallon (17)	Iro	Cummins (17)	Fawcett	Holroyd (46)	Donohue	Harmon	Lowes	Rose	Mercer	Eyres	Hanley (17)	O'Neill (S12)	Harmon (S10)
Jan. 30	Rochdale Hornets (SICC-4)	3.00	W 40-18	3,396	Tait (17)	Fallon (27)	Iro	Cummins (17)	Cummins (17)	Holroyd (46)	Donohue	Harmon	Lowes	Rose	Mercer	Eyres	Hanley (17)	O'Neill (S3)	Rose (S8)
Feb. 6	SALFORD	3.00	W 22-16	8,125	Cook (17)	Fallon	Iro (17)	Innes	Cummins	Holroyd (36)	Donohue	Harmon	Lowes	Rose	Mercer	Eyres	Hanley (17)	Schofield (S7)	Rose (S8)
Feb. 12	WARRINGTON (SICC-5)	3.00	W 38-4	9,713	Tait	Fallon (27)	Iro (17)	Innes (27)	Cummins	Holroyd (36)	Schofield (17)	Harmon	Lowes	Rose	Mercer	Eyres	Hanley (17)	Donohue	Rose (S8)
Feb. 20	Hull	3.15	L 14-21	5,424	Tait	Fallon	Iro (17)	Innes	Cummins	Holroyd (36)	Schofield	Harmon	Lowes	Rose	Mercer	Eyres	Hanley (17)	Donohue	Rose (S8)
Feb. 27	BRADFORD N. (SICC-6)	3.00	W 33-10	22,405	Tait	Fallon (17)	Iro	Innes	Cummins (17)	Holroyd (36,068)	Schofield	Harmon	Lowes	Rose	Mercer	Eyres	Hanley (27)	Vassilopoulos (S1)	Rose (S10)
Mar. 6	OLDHAM	3.00																	
Mar. 13	FEATHERSTONE ROVERS	3.00																	
Mar. 18	St. Helens	7.30																	
Mar. 26	St. Helens (SICC-SF)	2.15																	
Apr. 1	Wakefield Trinity	7.30																	
Apr. 4	HALIFAX	11.30																	
Apr. 10	SHEFFIELD EAGLES	3.00																	
Apr. 17	Leigh	3.00																	
Apr. 24	BRADFORD NORTHERN	3.00																	
T.B.A.	WIDNES																		

*Cummins (S13), Leatham (S10)

JOIN THE LEEDS R.L.F.C. LOINERS GUILD

and become a vital part of your club
 in prizes every week of the year including a
 superb first prize of £1,000

- ★ Membership pack
- ★ Monthly meet the players function
- ★ Matchday members bar
- ★ Discount on souvenirs
- ★ Fitness and aerobics club
- ★ Discount on season tickets

PLUS FREE membership for your children or grandchildren to Leeds R.L.F.C.'s
 junior Blue & Amber Club.

TELEPHONE: 786181 or call at the Souvenir Shop and Ticket Office

Regd. Leeds City Council & Gaming Board of Great Britain. No. LO/190/312/1.



Bartlett

INSURANCE BROKERS

FOR THE HIGHEST PROFESSIONAL STANDARDS IN INSURANCE BROKING

Broadway Hall, Horsforth,
Leeds, LS18 4RS.

Tel: 0532 585711. Fax: 0532 585081.

INSURANCE ADVISERS TO LEEDS RUGBY LEAGUE F.C.

WEST RIDING MOTOR AUCTIONS

3 Sales per week, over 200 cars for sale.

Tuesday 1p.m. Wednesday 6.30p.m. Friday 6 p.m.

The lowest commissions in the North

No Sale No Commission

Entry Fee only £10 (for 3 sales) *Free Valuation*

RING W.R.M.A. (0532) 521046 – Bruntcliffe Lane, Morley, Leeds.

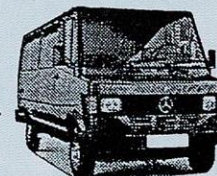
DERWENT VEHICLES OF LEEDS

MERCEDES-BENZ COMMERCIAL
VEHICLE DEALER



Elland Way, Elland Road, Leeds, LS11 0EY.

Tel: (0532) 775636. Fax: 778491.



18 LATEST NEWS . . . RING LEEDS CLUBCALL-0891 121530

AMONGST several stand out performers for Leeds this season, few have excelled more consistently than form full-back Alan Tait. His confident maturity has radiated through the side and been one of the key ingredients in the surge to the semi-final. "We haven't suddenly just become a good team, there are a lot of very capable players here. A couple of really big games has got people talking about us when before they have tended to write us off. We've been playing with a point to prove."

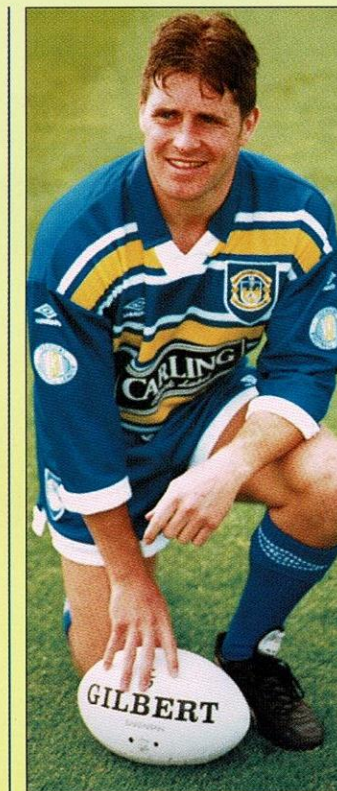
If there has been a catalyst that has helped unleash the potential it is the arrival of ex-Chemic team-mate Harvey Howard. "Doug chased him for about six months before Widnes were prepared to let him go because he knew that Harvey's presence would help bring the best out of everyone. He's breathed fresh life into the place and now we've got three excellent props who we can build the side round."

Not only do things appear to be coming right on the pitch and a genuine spirit and camaraderie developing off it, but perhaps even more significantly the players seem to be enjoying themselves. "The pressure on everyone here is unique and we want to do well for the fans so when things come off it's a great feeling of relief and satisfaction. There's nothing quite like the atmosphere generated by matches like the Bradford one but it takes a special sort of player to be able to handle it and that's the type Doug has been trying to recruit. We all relish those big games but sometimes people don't realise how hard it is to cope with the expectation of the build up and then actually go out and play on a Sunday."

Another major factor has been the accumulation of experience in vital areas of the pitch. "We've got a good mix and it's important that the good youngsters coming through are shown the right example. Playing alongside such as Ellery and Garry allows good habits to rub off and sets the foundation for the future which is the main thing. We've all learnt a lot from last year's semi-final defeat. We know where we went wrong, our training and injury hit preparation the week before just didn't feel right."

What has surprised the pundits the most has been the margin of the Cup victories over the previous League leaders. "Doggie signs footballer who can all pass and support not just specialists. If we make a break we are all capable of capitalising on it. I've been part of some good results here, not least against Cas last Boxing Day, but the victory over Warrington was probably the best performance I've played in."

Two good Challenge Cup runs have not hidden the problems of inconsistency in



PRO

FILE

Date of birth: 7.11.64

Previous clubs: Widnes.

Winners Medals: Regal Trophy (1), Premiership Trophy (3), Lancashire Cup (1), World Club Championship (1), R.L. Championship (2).

Representative honours: 12+2.

the League. "Wigan have dominated for the past five years but the overall standard is such that it's very difficult to win away from home. If we can keep this squad together, replace anyone who retires with the good young players coming through as well as add a couple of new faces, then we should start to make a real impact on the Championship."

If I was a fan I'd be excited at the prospect of seeing Graham Holroyd and Francis Cummins develop and fill out into men over the next few years."

The last two campaigns have been characterised by wholesale personnel changes prior to the big kick off which certainly has not helped.

"Bob Lannigan is one of the best motivators I've come across and he's keen to come back but only if he can work with the full squad. Last pre-season he was training players who left the club or didn't have chance to meet those who signed late. It takes time to settle in and that costs us early on in the competition."

With the growing feeling that the Loiners are on the move, comparisons with the continual success he was a part of at Widnes in the mid-late 80's are pertinent. "Some of the kids here are better and more exciting, we had quite an experienced squad at Naughton Park. Francis Cummins is in the Martin Offiah mould and certainly a match up between the two teams would have been very interesting." His own form this season has been a revelation, an assured bedrock at the back. "I came here to do a job. I won something every year I was at Widnes and intended to carry that on here. I have been playing some of my best rugby because experience is starting to pay off. Previously I was a bit hectic and just backed up the break but I've worked on my positioning so that I don't waste so much energy chasing the ball and tightened up my defence over the last couple of years."

In the midst of the excitement brewing at Headingley came the chance to play in the World Sevens which brought mixed feelings. "It took a lot out of the players who went and really comes at the wrong time for our game. If we had gone with a full squad I'm sure we would have won but if you don't feel right about going out there you shouldn't be forced into it. I really enjoyed playing against and beating some of the Winfield Cup sides and at the Sydney Football Stadium and it is another personal landmark to have been involved. It was a worthwhile exercise for the game as a whole, it was really well put across and the Australian media and public really responded. It was great to see the Pacific nations making such an impact."

All thoughts are now firmly centred on the remaining domestic competition and inevitably the forthcoming semi-final. "It's essential everything is kept low key and in perspective. In some ways it's better to be in the first one if you've got a roll on and can keep your best side together and clear of injuries. We've got some very tough League encounters to worry about first but when the time comes we'll be ready."

PHIL CAPLAN

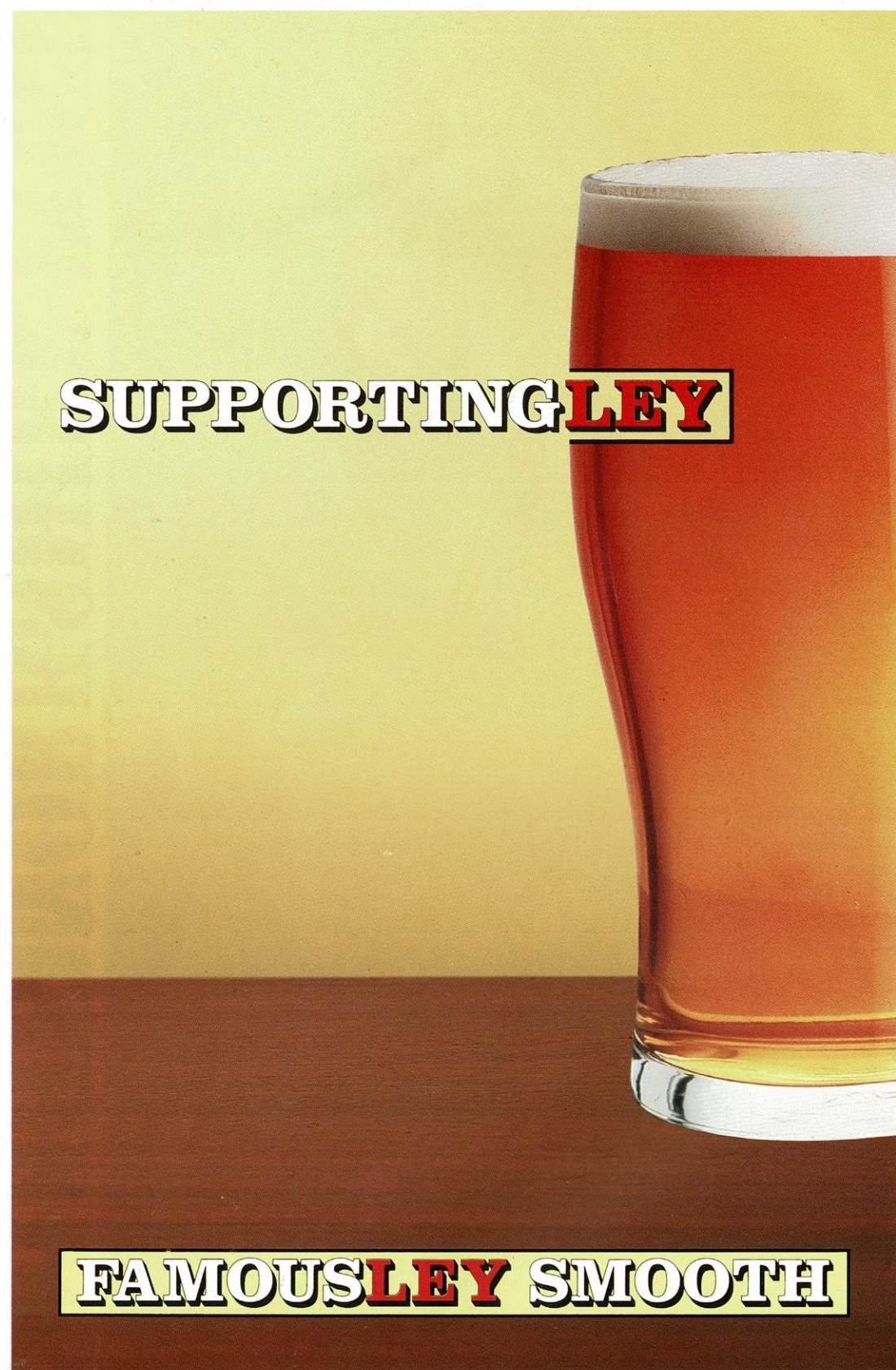
YORKSHIRE POST PROFILE

19

YORKSHIRE POST Profile



SPORTS YORKSHIRE POST
MONDAY



SUPPORTING LEY

FAMOUSLEY SMOOTH

SO, it's St. Helens then. Whoever Leeds were pitted against in the semi-finals in Monday's Challenge Cup draw it was going to be tough, though Castleford might be regarded as the form team of the year and Wigan are, of course, Wigan.

We all know, however, just how good Saints can be on their day and when they hit form they are an awesome proposition. It is worth remembering too that, despite a somewhat patchy season, they hammered Castleford not that long ago and certainly won't be taken lightly.

The pairing of the long-time rivals will, no doubt, evoke memories of that wonderful Challenge Cup semi-final in 1977, also at Central Park, when an 'Atky' special took us through to Wembley. And a year later we beat Saints again in that magical 1978 Final at the famous stadium. St. Helens have had the

LEEDS RLFC HEADINGLEY *update*

better of recent big games between the two but Leeds are hitting form, and what form, at just the right time. The Challenge Cup victories over Warrington and Bradford, the two top teams in the League, were as good as anything in recent memory and we will enter the semi in the knowledge that we now have a pack which can match it with the best, and a set of backs with the potential to destroy any side.

Since those heady days of '78, Saints have been back to Wembley three times and lost on all three occasions so they will be eager to put the record straight, while Leeds are desperate to recapture the glories of the seventies and now appear capable of doing just that.

The clash of the respective coaches is also an intriguing

side to the big game. Doug Laughton and new Saints boss Eric Hughes were both members of the outstanding Widnes team of the seventies

and early eighties which tasted so much success at Wembley. Both, indeed, played against Leeds in 1977, while Hughes was a member of the Widnes squad which inflicted that heartbreaking last minute semi-final defeat upon Leeds in 1982.

Whatever, it is going to be a great occasion on March 26 and with both sides committed to playing the game the way it should be played a thriller seems assured, while the heart-stopping tension which is semi-final football is guaranteed. Hopefully, there will be another very large Leeds following at Central Park to cheer on their favourites because the magnificent home crowd against Bradford visibly lifted the Loiners and was worth several points start.

SET TO FACE THE SAINTS



MATCHDAY VIDEOS

Videos are on sale now in the Souvenir Shop of all Leeds RLFC first team games both home and away. They are priced £9.99.

**AUSTRALIA
1996**

**THE OFFICIAL
LEEDS RLFC
TOUR TO
AUSTRALIA IN 1996**
for the
AUSTRALIA

**v.
GREAT BRITAIN**
Test match series

◆ **4 DIFFERENT TOURS**
◆ **SUPERB NO
OBLIGATION SAVING
SCHEME**

ABTA & IATA BONDED
FOR DETAILS CONTACT
**LEEDS RUGBY
LEAGUE CLUB**

☎ **0532 786181** ☎

A HEADINGLEY WELCOME



KEITH SMITH & STEVE SIBSON.

FANS OF THE WEEK

Names: Steven Sibson and Keith Smith.
From: Roundhay and Burmantofts.
Favourite present player: Garry Schofield and Alan Tait.
Favourite all-time player: Garry Schofield (for both boys).
Question: What are your views on certain Big League and Cup matches on a Friday and Saturday rather than the traditional Sunday meeting?
Answer: Keith explains, "I am lucky that I have both satellite and terrestrial television. I like to watch the Friday night matches and also the Saturday afternoon games on the television. However, the only draw-back is, it affects the attendances on both the Friday and Saturday matches. On Friday night because people could be working and as you

know if Leeds are playing in Lancashire the M62 at rush hour is a 'no go area'." As for Saturday afternoons, the majority of supporters participate in other leisure activities. Watching R.L. on a Sunday has become a habit for everyone involved in the professional game. Steven explains, "I would like to see a programme devoted to Rugby League on a Sunday evening, showing a Match of the Day and extensive highlights of all the Big League games, this would also apply to Cup matches involving these teams. A programme similar to soccer's Match of the Day which would be transmitted on the regional networks, i.e. Yorkshire, Granada and Border TV just like Scrumdown used to be."

HAMMOND SUDDARDS
SOLICITORS

Sponsors of Leeds R.L.F.C. Man of the month

Bryan's
OF HEADINGLEY
EST. 1934

**Yorkshire's Favourite
Fish and Chips!**

LICENSED FISH RESTAURANT &
TAKE AWAY

Open Seven Days

Monday to Saturday-11.30am to 11.30pm

Sunday-12.30 to 8pm

Weetwood Lane, Leeds LS16 5LT.
Telephone: (0532) 785679.

**RECORD GOLDEN
GAMBLE PAYOUT**

After the Loiners superb performance against Bradford, the Golden Gamble Matchday draw produced another superb result with a record matchday payout. The lucky winner Mr. R. Rowland from Ripon received the total sum of £907.00. After collecting his winnings

Mr. Rowland said.
"What a tremendous day, Leeds' awesome display of running rugby in the best game I have seen in years and to top it all to win £907.00 on the Golden Gamble Matchday Draw you can't ask for more, I am overjoyed."

If you would like to go down the same path as Mr. Rowland make sure you purchase your Golden Gamble Draw ticket at today's game.

COMING SOON

**CHRIS
SANDERSON
MEMORIAL
DANCE**

Friday, April 15th
in the Loiners Bar
from 8.00 p.m.

Garry Schofield/
Colin Maskill will be
presenting trophies.

Tickets: £2.00
(inclusive of prize
draw).

**TRAVEL WITH LEEDS
RLFC TO AUSTRALIA
IN 1996**

The superb packages on offer to Leeds RLFC supporters for the Australia v. Great Britain Test Match Series in 1996 are proving to be extremely popular.

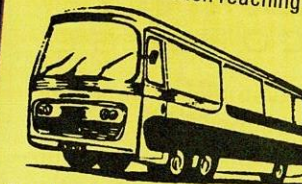
Already many fans have committed to the

Leeds RLFC tours and are already paying into the no-obligation savings scheme. A brochure is available explaining the four different tours.

You can get your copy by telephoning (0532) 786181.

ON THE ROAD

Leeds travel to St. Helens on March 18th. The best way to Knowsley Road is to leave the M62 at junction 14 and follow the signs to St. Helens (A580). At the Haydock junction (J23 with M6) follow signs for Liverpool A580. At the junction with A58 continue straight ahead at traffic signals. On reaching junction with A571 continue straight ahead. When reaching traffic



signals and signs for A570 turn left, then right onto B5201. In approx. 1 mile turn left into Mill Brow and shortly after into Knowsley Road for the St. Helens ground on the right.

LEEDSLINE AGENTS

Why not become a Leedsline agent and receive huge agents incentives. Telephone 786181 and ask for Leedsline Agents details.

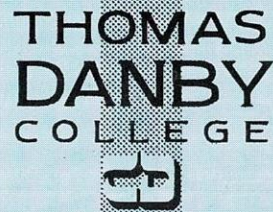


I NEVER KNEW THEY DID THAT

THOMAS DANBY COLLEGE SPECIALISES IN

- CONFERENCES ● WEDDINGS ● PRIVATE PARTIES
- DINNER DANCES ● EXHIBITIONS ● DISPLAYS

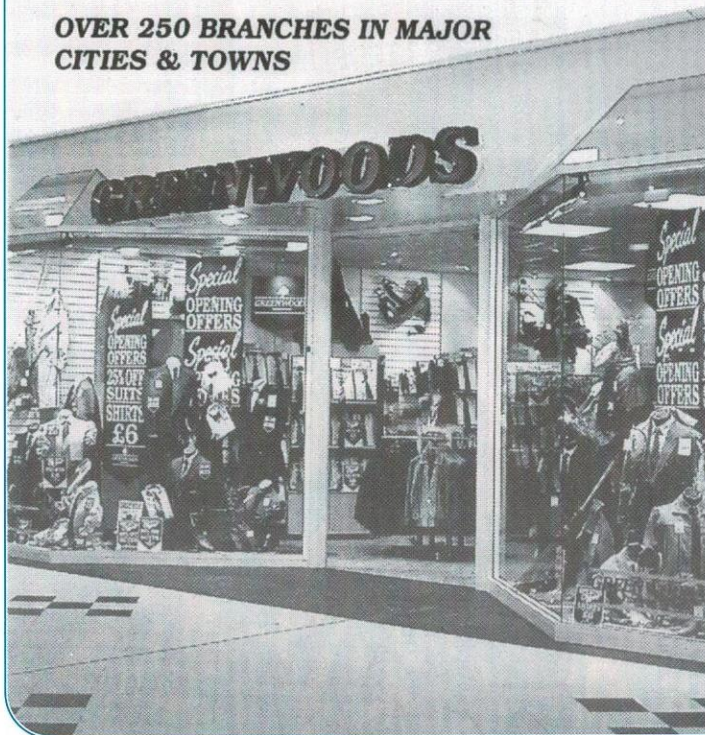
WITH OUR SUPERB NEW LICENSED RESTAURANT, EASY ACCESS, AMPLE CAR PARKING AND EXCELLENT ROAD / RAIL LINKS THOMAS DANBY COLLEGE IS THE IDEAL VENUE FOR ANY MEETING - BUSINESS OR SOCIAL



FOR YOUR INFORMATION PACK OR TO MAKE A RESERVATION CONTACT THE CONFERENCE ORGANISER, THOMAS DANBY COLLEGE, ROUNDHAY ROAD, LEEDS LS7 3BG. ☎ (0532) 494912

GREENWOODS

OVER 250 BRANCHES IN MAJOR CITIES & TOWNS



ASK FOR A **FREE!** CATALOGUE

CALL FREEPHONE
0800 919 123



FRUSTRATING TIME FOR FEEDER TEAMS

The desperate weather of recent weeks has decimated both the Youngers Alliance and JJB Sports Academy programmes.

Last week in the Alliance competition Leeds were due to take on Ryedale-York in a game vital to their survival in the First Division.

The Loiners are currently second from bottom of the table and before the scheduled York game had just three wins to their credit from 17 matches.

Bottom side Batley have managed two wins from 18 games, while the team Leeds must overhaul in the battle for survival, Widnes, have managed four victories but up to press had played one more game than Leeds.

Ryedale-York, meanwhile, are a couple of places clear of the relegation dogfight in the rather more comfortable position of having won seven matches from 16 games played so far.

At home, though, Leeds fancied their chances against Ryedale to make up ground on Widnes and the unavoidable postponement was a major frustration.

It also left Leeds in the knowledge that their next game would be a daunting trip to Wheldon Road to face third placed Castleford and (weather permitting that was due to take place this week).

ALLIANCE FIXTURES

25. 8.93	Castleford	H	7.30	L 14-18
2. 9.93	Bradford N.	A	7.30	L 24-48
12. 9.93	Wigan	H	11.30	L 14-16
17. 9.93	Hull	H	7.30	
(Prel. Rd. of Youngers YSC Cup) L 12-42				
22. 9.93	Salford	H	7.30	L 14-34
1. 10.93	Youngers YSC Cup and LCCS Round 1			
8. 10.93	Featherstone	H	7.30	L 22-23
22. 10.93	Youngers YSC Cup and LCCS Round 2			
29. 10.93	St. Helens	A	7.30	L 17-46
3. 11.93	Widnes	H	7.30	W 42-14
12. 11.93	Wakefield	A	7.30	L 7-44
24. 11.93	Bradford N.	H	7.30	L 16-26
3. 12.93	Batley	H	7.30	W 22-20
10. 12.93	Warrington	A	7.30	L 36-16
17. 12.93	Hull	A	7.30	L 12-10
7. 1.94	Batley (YACC1)	A	7.30	W 23-10
16. 1.94	Wigan	A	12.00 noon	L 20-26
24. 1.94	Warrington	H	7.30	L 10-24
28. 1.94	Keighley (YACC2)	H	7.30	W 60-14
4. 2.94	Salford	A	7.30	L 12-26
11. 2.94	Halifax	A	7.30	L 20-30
18. 2.94	Salford (YACC3)	A	8.00	L 14-54
18. 2.94	Hull	H	7.30	
25. 2.94	Ryedale York	H	7.30	
3. 3.94	Castleford	A	7.30	
11. 3.94	Featherstone	A	7.30	
11. 3.94	Youngers Alliance Challenge Cup-Semi Final			
16. 3.94	St. Helens	H	7.30	
25. 3.94	Widnes	A	7.30	
30. 3.94	Wakefield	H	7.30	
14. 4.94	Youngers Alliance Challenge Cup-Final			
T.B.A.	Halifax	H		
T.B.A.	Ryedale York	A		

Elsewhere in Alliance football postponements were also the order of the day with the League programme and third round of the Cup decimated.

In the games which did go ahead, Salford conquerors of Leeds in the Alliance Cup, confirmed their own quality with a six-try 28-14 defeat of Wigan at the Willows.

The victory means Salford, though actually in fifth spot, have emerged as possible title contenders because they have at least two games in hand, on their rivals above them and are only six points adrift of

leaders Warrington. Second-placed St. Helens, meanwhile, stepped up their challenge with a very hard-fought 18-8 success at the Boulevard against Hull.

Only one game was played in the Academy competition last week, a second division fixture which saw Featherstone thrash Whitehaven 44-0 at the Recreation Ground.

Leeds, currently sixth in the first Division after a good second period of the season, were due to play second-placed Wigan last week at home but that game also fell victim to the weather.

Yesterday, (Saturday), the young Loiners were due to be back in action though with a trip to Bradford who are just below Leeds in the table. Earlier in the season Leeds defeated Northern in a thrilling game at home and were hoping to strengthen their challenge for a top four spot in the always eagerly contested derby games.

ACADEMY FIXTURES

15. 1.94	Wakefield Trinity	H	2.30	38-14
22. 1.94	Salford	A	2.30	18-26
29. 1.94	Hull	H	2.30	22-18
12. 2.94	Castleford	A	2.30	24-14
19. 2.94	Academy Chall. Cup			
26. 2.94	Wigan	H	2.30	
5. 3.94	Bradford N.	A	2.30	
12. 3.94	Leigh	H	2.30	
26. 3.94	Halifax	A	2.30	
2. 4.94	Hull K.R.	H	2.30	
9. 4.94	Warrington	A	2.30	

All Leeds R.L. Academy fixtures are played at Weetwood Sports Ground on the Leeds Outer Ring Road, near Weetwood Police Station.

in the
wings

The Headingley Premier Club



 CLUB TWENTY FOUR
 DIBB LUPTON BROOMHEAD SOLICITORS
 LUPTON FAWCETT SOLICITORS
 MCB University Press
 British Gas North Eastern
 RESDEV
 White Young Consulting Engineers and Project Managers
 EVERSHEDES HEPWORTH & CHADWICK
 Parkland Textile (Holdings) PLC
 EVENTCO
 ACT ite BUSINESS SERVICES
 Sellers
 BONUS
 Appleyard
 MIB LOCK SUPPLIES LTD
 NELSON & Co SOLICITORS
 YORKSHIRE POST NEWSPAPERS LTD
 COMMERCIAL UNION
 Wm. ROBERTSHAW & MYERS CHARTERED ACCOUNTANTS

Executive Box Holders

 CAPE SCAFFOLDING
 CARLSBERG-TETLEY
 HAMMOND SUDDARDS SOLICITORS
 LÖWEN SPORT
 ELLMORE BUILDERS & CONTRACTORS
 GLENROSE
 British Gas North Eastern
 AJC

Associate Sponsor



HARMEL

IRONMONGERS - TOOL STOCKIST
BUILDERS HARDWARE

OFFICE: Unit 35, Stonebridge Mills, Stonebridge Lane,
Wortley, Leeds LS12 4QL.

TELEPHONE: 0532 797900

AFTER OFFICE HOURS: 0532 635618

Hours of opening: Monday-Friday 8am-5pm. Saturday 8am-12 noon.



The Shepherds FRIENDLY SOCIETY

A MEMBER OF LAUTRO



District Office:
2 Victoria Terrace, Belle Vue Road,
Leeds LS3 1BX. Tel: 0532 456956.

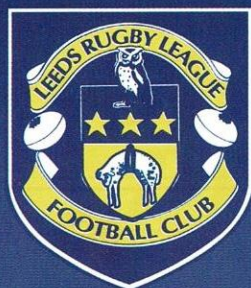
THE SHEPHERDS FRIENDLY SOCIETY LIMITED IS AN INCORPORATED SOCIETY
WITHIN THE MEANING OF THE FRIENDLY SOCIETIES ACT 1992-No. 240F.

are pleased to be associated with
LEEDS RUGBY LEAGUE

Matchball Sponsor

SKANDIA LIFE

are pleased to be associated with
Leeds Rugby League
Football Club



LOINERS GUILD WINNERS

WEEK 16

£1,000 2585 J. Brama
 £300 (Voucher) 4394 E.B. Gray
 £10 2580 £10 2586
 £10 2581 £10 2587
 £10 2582 £10 2588
 £10 2583 £10 2589
 £10 2584 £10 2590

WEEK 17

£1,000 4451 White Horse Press
 £300 (Voucher) 3373 R. Lawrence
 £10 4446 £10 4452
 £10 4447 £10 4453
 £10 4448 £10 4454
 £10 4449 £10 4455
 £10 4450 £10 4456

SIMON IRVING

Specialises in Complete Personal Financial Planning

- Savings Programmes
- Income Replacement
- Life Assurance
- School Fees Planning
- Retirement Planning
- House Purchase
- Inheritance Tax Planning
- Capital Investment
- Unit Trusts
- Business Assurance

For more information please contact
Simon Irving, Financial Consultant,
 on Wakefield (0924) 255023.



BLUE & AMBER UNDER-9's

GOLDEN GAMBLE MATCHDAY DRAW

A PRIZE OF UP TO

£2000

MUST BE WON AT TODAY'S MATCH

SECOND PRIZE—AN AUTOGRAPHED RUGBY LEAGUE SHIRT

THE LUCKY PRIZE WINNER AT THE
 BRADFORD MATCH WAS:
MR. R. ROWLAND FROM RIPON
 WHO WON £907.00.

lotteries

LEEDSLINE

£500 WINNERS

WEEK 17

MONDAY 21-2-94 - £500
 B2714 J. Lipzith, Belle Vue Road, Leeds.
 Agent-37 A. Hurlle, Lockwood Engineering.

TUESDAY 22-2-94 - £500
 Q5878 J. Jennings, c/o Jubilee Social Club.
 Agent-367 Mr. Midgley, Jubilee Social Club.

WEDNESDAY 23-2-94 - £500
 K4521 Mrs. J. McHugh, c/o Old Red Lion,
 Thwaite Gate LS10. Agent-063 J. McHugh,
 Old Red Lion, Hunstlet LS10.

THURSDAY 24-2-94 - £500
 A6405 A. Harwood, Chatsworth Road,
 Harrogate. Agent-316 A. Harwood, Candy
 Corner News, Harrogate.

FRIDAY 25-2-94 - £500
 G5249 J. Carter, 44 Southwood Close,
 Leeds 14. Agent-086 C. Rhodes, Fearnville
 Terrace, Leeds.

WEEK 18

MONDAY 28-2-94 - £500
 J5075 G. Nelson, Eltham Close, Leeds 6.
 Agent-368 Mrs. Hartley, Woodhouse Rec.
 205 Woodhouse Street.

TUESDAY 1-3-94 - £500
 L2405 P.N. King, Murchison Street,
 Scarborough. Agent-013 Scarborough.

WEDNESDAY 2-3-94 - £500
 H2959 S. Skidmore c/o Moortown Social Club.
 Agent-370 Mrs. Harris, Moortown S/C,
 Cranmer Gardens.

THURSDAY 3-3-94 - £500
 P4449 A. Ritchie, High Ridge Avenue,
 Rothwell. Agent-107 Mr. Webster, Wood
 Lane, Rothwell.

FRIDAY 4-3-94 - £500
 A40?? ?????? c/o Agent.
 Agent-22? ?????? 26 Raynville Rise.

LEEDSLINE

If you are interested in being a Leedsline
 Canvasser or a Collector in your area please
 contact: Leedsline Manager Mr. Graham
 Murphy on (0582) 786181. You could earn
 good commission and watch Leeds Rugby
 League for FREE!

NEWSLINES

WORK FOR THE LEEDS R.L.F.C.!

YOUR CLUB NEEDS YOU!

Support the Loiners through
LEEDSLINE Daily Draw.

We are looking for Agents in all areas of Leeds and district. If you have a minimum of 6 friends who would be interested in becoming a member why not start your own agency?

You will earn good commission and many benefits which are listed below. So why not climb aboard and become one of our valued Agents in Yorkshire's Biggest Daily Draw.

***15% commission on sales.**

***10% bonus on major prize winners.**

***Complimentary match tickets on 20 members or more.**

***Priority given for Cup tickets.**

***Save ££££ on big discounts from a wide variety of local retailers.**

***5% discount at the Official Souvenir Club Shop.**

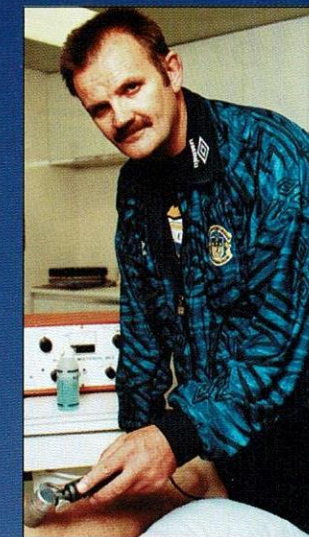
For as little as 20 pence per day, £1.00 per week you have the chance of winning Yorkshire's top weekly prize money—£2,500 per week plus many consolation prizes.

For full details please contact
 Graham Murphy, Leedsline
 Manager, Bass Headingley, St.
 Michael's Lane, LEEDS LS6 3BR.
 Tel: 0532-786181.

COMING SHORTLY

Agents Race Night, free supper.

Meet the players next Tuesday, 8th
 March, 1994 in the Supporters Club
 starting at 8.00 p.m. Also free
 Agents Prize Draw.



INJURY UPDATE

We had a scare prior to the Bradford Northern match, when Harvey Heward arrived at the Saturday morning training session with a severe tummy problem. This carried over until Sunday morning and it was touch and go whether he played in the match, but full credit to Harvey he went out and did the team proud.

Gary Mercer was taken from the field as a precaution and once the problems had been sorted out by the club doctors he was allowed to return to the match.

We picked up a few minor injuries from the Bradford game and it will only be later on in the week before we can say whether we will be at full strength for the visit of Oldham.

Hope you enjoy today's game.

Stuart Walker

update

Bringing people and solutions together

of our clients to ensure you have precisely the protection you need, covering the things that matter. Smithson Mason 'bring people and solutions together'. If you would like to know more, contact us at one of the offices shown or send for more information.

Smithson Mason is a major independent broker specialising in high quality professional services for business and public sector organisations. General insurance and risk management . . . pensions and financial planning . . . cover for health and education services . . . our highly qualified team has a wealth of experience to draw on, and access to substantial underwriting facilities in safe markets. This knowledge and expertise we use on behalf

SMg
Smithson Mason Group

Smithson Mason Group

SMg House,
31 Clarendon Road,
Leeds LS2 9PA.
Tel: (0532) 450756
Fax: (0532) 424436

SMg House,
Harrogate Road,
Greengates,
Bradford
BD10 0RA.
Tel: (0274) 611277
Fax: (0274) 610949

SMg House,
12/14A Bath Street,
Altrincham,
Cheshire
WA12 2HG.
Tel: (061) 928 7290
Fax: (061) 941 7172

James E. Watson
& Company Limited,
SMg House,
25 Canmore Street,
Dunfermline,
Fife KY12 7HN.
Tel: (0383) 733771
Fax: (0383) 730388

BESSELAAR

Clinical Research Unit

Here at the Clinic we assess the suitability of medicines which may be available on prescription or for purchase over the chemists counter. OUR VOLUNTEERS help us in our work by taking small doses of new or previously tested medicines. This is most usually followed by monitoring of blood pressure and pulse rates and taking of blood samples. To volunteer you must be over the age of 18 and not taking regular medication. Studies are conducted at our specially equipped Clinic in Leeds under the supervision of qualified medical and support staff. The Clinic offers a variety of recreational facilities which includes a comfortable TV Lounge, and a Recreation Room equipped with pool table and other games. All volunteers are compensated for the time they spend with us.

PLEASE QUOTE REF NO: LEEDS RUGBY LEAGUE.

Springfield House, Hyde Street, Leeds, LS2 9NG.

Interested? call free on 0800 591 570

Columnist Phil Caplan traces the Headingley career of former Kiwi international Mike Kuiti, currently plying his trade with today's opponents Oldham.

Whilst only gracing the Headingley turf for a season and a half, the acquisition of New Zealand backrower Mike Kuiti in 1990 proved to be one of the shrewdest signings made by coach Mal Reilly. Having started on the Kiwi tour the previous Autumn and gone on to make his Test debut in France, the rangy loose forward was persuaded back to England to fill the vacancy left by Mark Laurie's return to Australia.

Earlier stints during the 80's at Rochdale and Swinton meant that he was no stranger to the British domestic scene but his sensational debut for the Loiners really stamped his class on the game. A two try match winning performance at home to Bradford alongside another debutant David Cruickshank immediately endeared him to the Headingley faithful.

A skilful ball handler, archetypal wide runner and underrated defender capable of some exceptionally timed man tackles meant he secured a regular place in the side on the Championship run in. He played a vital part in the relentless pursuit of Wigan culminating in an outstanding display at Central Park that was effectively the title decider. Leeds had to settle for runners up spot, equalling their best position under two divisions, and Kuiti's contribution of five tries in twelve matches was highly influential.

A heavy Premiership semi final defeat at home to Widnes denied the Loiners the chance of any silverware but he returned home to haunt the Great Britain tourists,

playing for the Maoris, capturing the President's 13 and being an integral part of the Wellington Provincial side that won a famous victory.

He returned to Headingley having just missed out on further Test honours but in impressive form for Leeds. Perhaps his most memorable performance came in a 41-16 home drubbing of Castleford when his try hat trick exhibited all his dexterous range of skills. An eleven try return for the season maintained his efforts, which for the latter part of the campaign were from the position of centre which was well suited for his quick

QUICK HANDS AND STRONG RUNNING GAME

hands and strong running game.

The arrival of Doug Laughton saw him head back to Rochdale where the added lure of being appointed assistant coach held obvious appeal. Before he could make much of an impact his potential for bringing out the best in the players around him persuaded Oldham coach Peter Tunks to move in for him as part of one of his many swap deals. His consistent performances have fully justified that faith and at least given The Roughyeds hope of avoiding the drop.

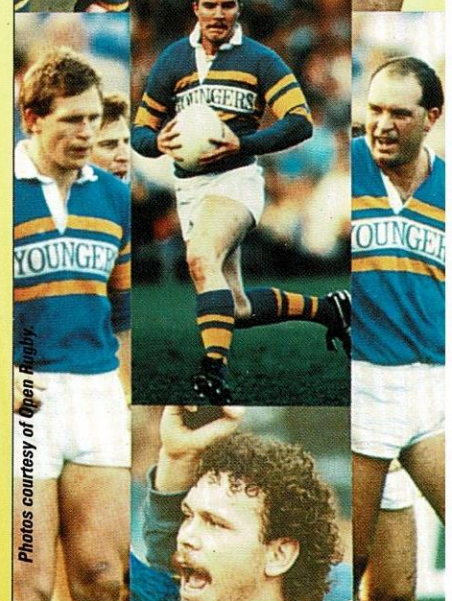
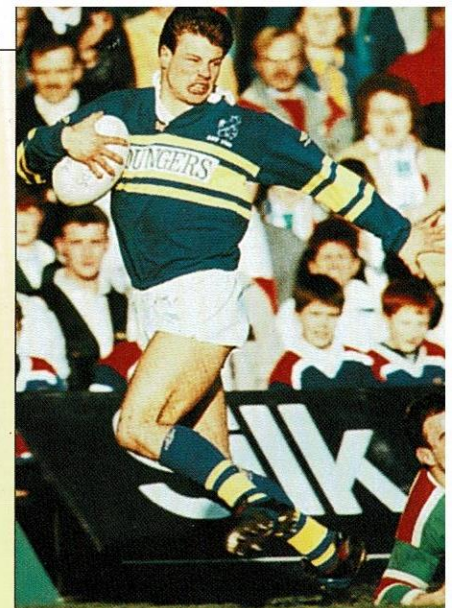
His friends at Headingley are sure to give him a warm reception.



LEEDS RUGBY LEAGUE CLUB LEGENDS

Ten of the greatest players ever to wear the famous blue & amber shirt have been captured in stunning portrait style along with an excellent mount and frame to make a wonderful momento for all true Leeds RLFC supporters. This portrait collection is available from the Leeds RLFC Souvenir Shop and The Leeds RLFC Shop in Town priced at £49.99.

A MUST FOR ALL LEEDS RLFC SUPPORTERS!

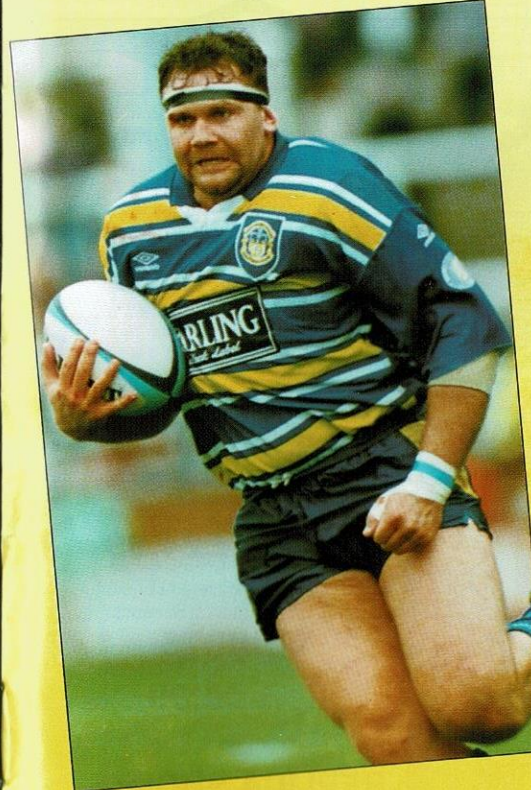


Photos courtesy of Open Rugby

**CARLING
NO WONDER
IT'S NO 1.**



OFFICIAL SPONSORS OF LEEDS RLFC



CARLING
*man of the
match*

NEIL HARMON

v. BRADFORD-27th FEBRUARY

Doug Laughton regards prop Neil Harmon as one of his most important captures to date and over the past few weeks it has become increasingly evident why.

A tireless worker, a relentless yardage maker and a player with the intelligence and skills to create play for others, Neil Harmon is a young man going places and going places with Leeds.

Rarely will we see a finer or more complete front-row performance than the one Neil turned in against Bradford and it proved crucial in the battle to subdue the highly-rated Northern pack. So often the unsung hero, it was good to see Neil get the recognition he deserves with his thoroughly well-earned man of the match award.



No wonder He's No. 1

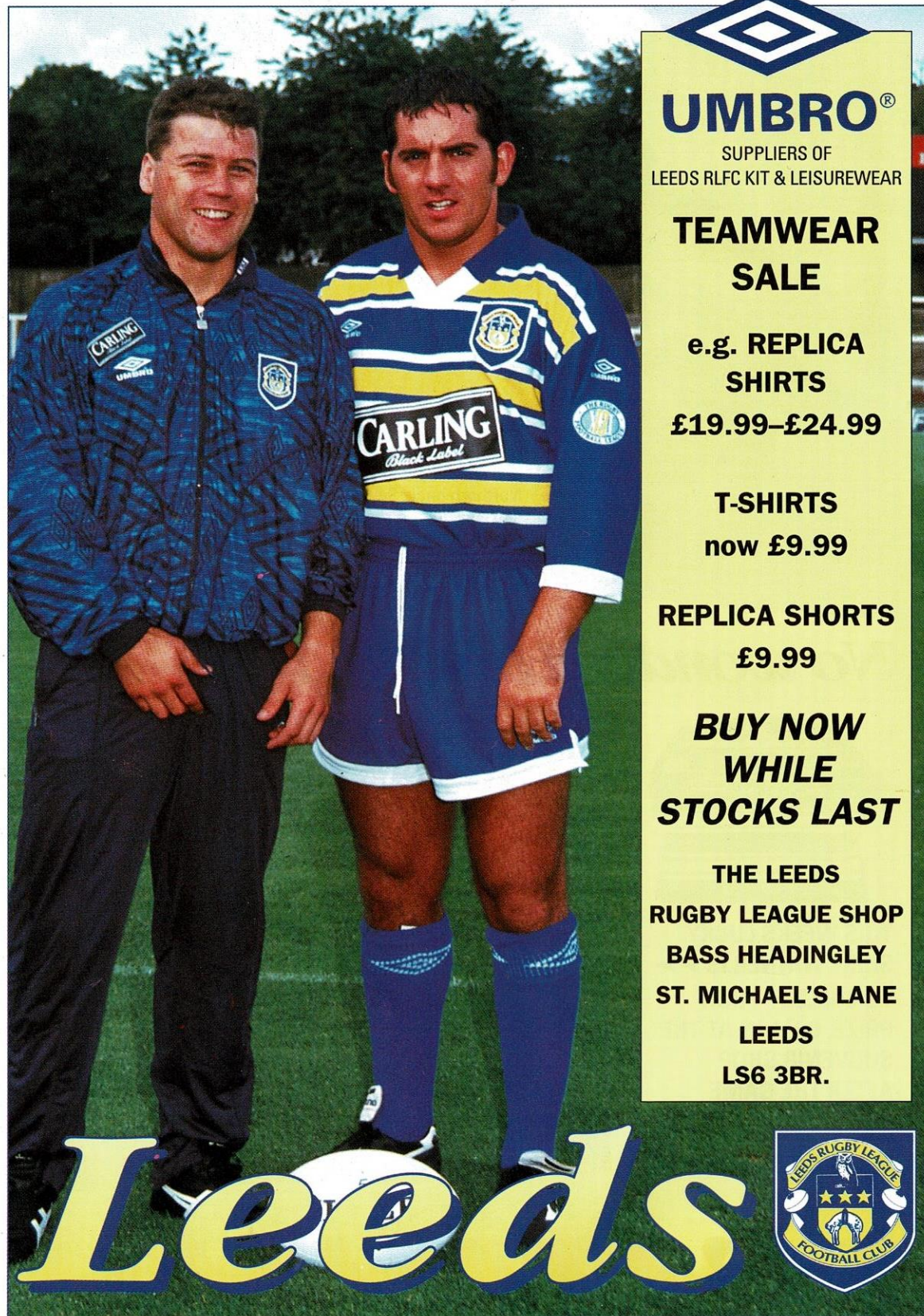


**THIS WEEKS LUCKY
SHIRT WINNER IS >>>
TO COLLECT YOUR
PRIZE, CALL IN AT THE
SOUVENIR SHOP
AFTER THE GAME
TODAY**



FACE IN THE CROWD

winner



UMBRO®
SUPPLIERS OF
LEEDS RLFC KIT & LEISUREWEAR

**TEAMWEAR
SALE**

e.g. REPLICA
SHIRTS
£19.99-£24.99

T-SHIRTS
now £9.99

REPLICA SHORTS
£9.99

**BUY NOW
WHILE
STOCKS LAST**

THE LEEDS
RUGBY LEAGUE SHOP
BASS HEADINGLEY
ST. MICHAEL'S LANE
LEEDS
LS6 3BR.

Leeds



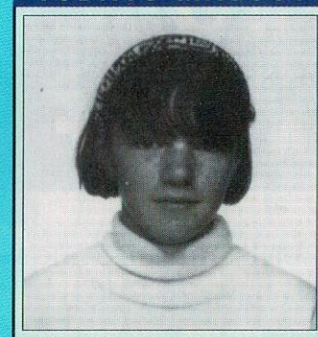
**LEEDS SCHOOLS' R.L.
UPDATE-LEEDS U-11's 8...
HUNSLET & MORLEY 10**
On a cold and frosty morning in South Leeds, both sets of youngsters put on a display of Rugby League football to warm the hearts of the many spectators. Having been rather fortunate to win by two points the week before, Leeds could count themselves unlucky to lose by the same margin this time.
Strong running from both sides in the early stages was cancelled out by even stronger tackling, with half backs Stuart Robb (Hawthorn Wood) and John Richardson (Newlaithes) working exceptionally hard. Foraging runs by pack men Vincent Burke (Hawthorn Wood), Chris Fletcher (Kirkstall Valley) and Aaron Smith (Beechwood) gave the visitors territorial advantage, and finally Thomas Hepburn (Alwoodley) ran half the length of the field, beating most of the opposition tacklers on the way, to score an excellent

DON'T FORGET
the player card competition ends soon!

Be sure to take your full set of cards to Weetwood Police Station, Otley Road, Leeds 16 before Thursday, March 31st, 1994.

COMING UP
MARCH EVENTS
5th March:
Blue & Amber
Training
10.00 a.m.
12th March:
Blue & Amber
Training 10.00 a.m.

TODAYS MASCOT

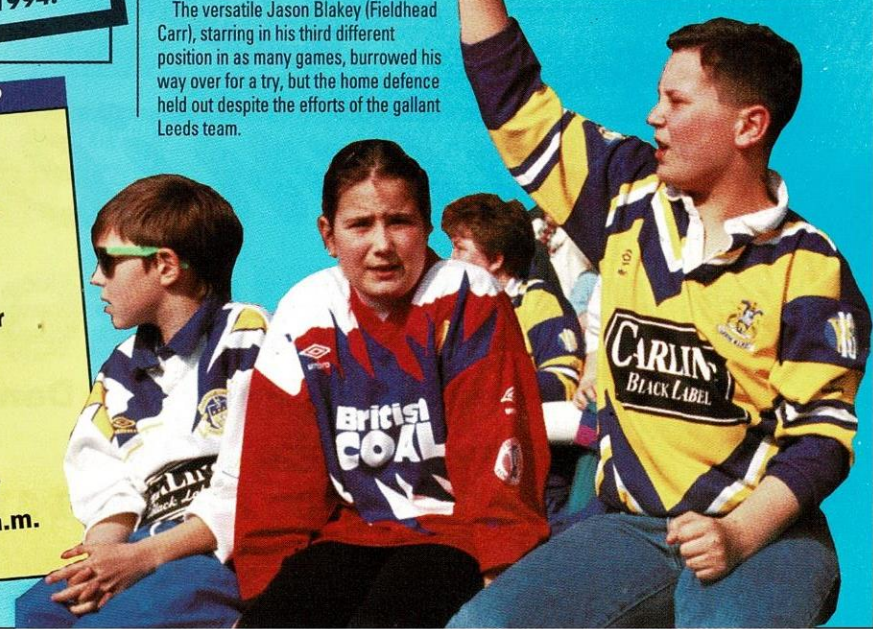


ZARA SUTCLIFFE
Age: 13½.
School: Garforth Community College.
Favourite food: Fish & Chips.
Favourite player: Garry Schofield.

NEWSFLASH

PLAYERS PROFILE
Full name: Francis Cummins.
Birthdate: 12/10/76.
Birthplace: Dewsbury.
Height: 6 ft.
Weight: 13 st.
Marital status: Single.
Previous clubs: St. John Fisher A.R.L.F.C.
Occupation: Apprentice.
Representative honours: G.B. Academy.
Favourite food & drink: Egg & chips, apple & blackcurrent.
Favourite music: Chart & Beatles.
Favourite TV prog: Coronation Street & Blackadder.
Favourite film seen: Wayne's World & Commitments.
Favourite other sports: Soccer & cricket.
After match routine: A shower & bath.
Rugby hero of childhood: Garry Schofield (although Garry doesn't like it, it makes him feel old).
Team supported as a boy: Leeds R.L.
Favourite sportsman: Mohammad Ali & Bryan Robson.
Hardest tackler faced: Lee Crooks.
Hardest player to tackle: David Myers & B.J. Mather.
Favourite ground: Headingley.
Most memorable match: Wigan at Headingley & Bradford.
Superstitions: I like to wear the same T-shirt for every game.
Favourite player (past & present): Ellery Hanley.
Biggest influence on career: My dad & John Maloney ex-Hull F.C. (coach for St. John Fisher).

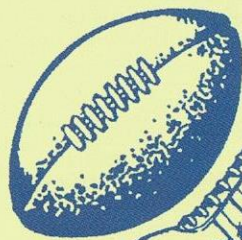
try.
This proved to be the only score of the first half, but the second half began disastrously for Leeds. Almost immediately, a high Hunslet & Morley kick was not cleared, and one of the chasers kicked the ball over the line to score under the posts. The resulting conversion was to prove decisive. A further try was conceded, but to the great credit of the Leeds youngsters, they did not become at all dispirited; indeed their work rate increased remarkably and the rest of the game was spent with the home team defending their own line.
The versatile Jason Blakey (Fieldhead Carr), starring in his third different position in as many games, burrowed his way over for a try, but the home defence held out despite the efforts of the gallant Leeds team.



RIGHT FROM THE KICK-OFF

Right from the kick off Premier Profiles Ltd. has been a leading manufacturer of PVCu window and door profiles and conservatory products. UK designed and made the systems are for commercial, industrial and domestic applications. Tested to BS6375 and rated to BS5750, the Premier systems perform to the same high standards as Leeds Rugby League RFC.

We wish Leeds Rugby League RFC all the very best for today's game-Right from the Kick-Off



Premier PROFILES

Premier Profiles Ltd. Warmsworth, Doncaster
South Yorkshire DN4 9LS

Telephone: 0302 310200 Fax: 0302 310174

A Member of the Polypipe plc Group of Companies

LEEDS				OLDHAM			
	T	G	P	T	G	P	
1	ALAN TAIT						WALLY GIBSON 1
2	JIM FALLON						SCOTT RANSON 2
3	KEVIN IRO						SHAUN IRWIN 3
4	CRAIG INNES						DARREN ABRAM 4
5	FRANCIS CUMMINS						DAVID JONES 5
6	GRAHAM HOLROYD						GLEN LIDDIARD 6
7	GARRY SCHOFIELD						MARTIN CROMPTON 7
8	HARVEY HOWARD						IAN SHERRATT 8
9	JAMES LOWES						JOHN CLARKE 9
10	NEIL HARMON						ANDY GOODWAY 10
11	GARY MERCER						SHANE TUPAEA 11
12	RICHIE EYRES						BOB LINDNER 12
13	ELLERY HANLEY						MIKE KUITI 13
14	MARCUS VASSILAKOPOULOS						STEVE KERRY 14
15	GARY ROSE						BARRIE McDERMOTT 15

Todays Referee: D. ATKIN (Hull) Touch Judges: A. Randerson R. Mosley

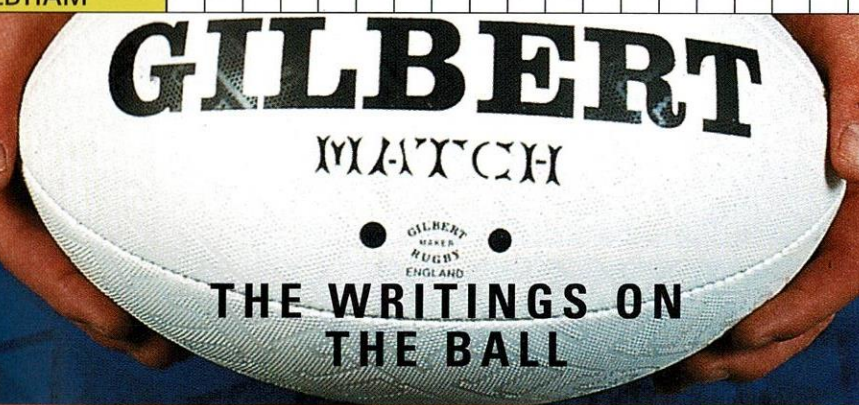
LEEDS																				
OLDHAM																				

SCRUMS

1	2	3	4	5	6
8	9	10	11	12	13
14	15	16	17	18	19
20	21	22	23	24	25

PENALTIES

1	2	3	4	5	6
8	9	10	11	12	13
14	15	16	17	18	19
20	21	22	23	24	25



SCRUMS

1	2	3	4	5	6
8	9	10	11	12	13
14	15	16	17	18	19
20	21	22	23	24	25

PENALTIES

1	2	3	4	5	6
8	9	10	11	12	13
14	15	16	17	18	19
20	21	22	23	24	25