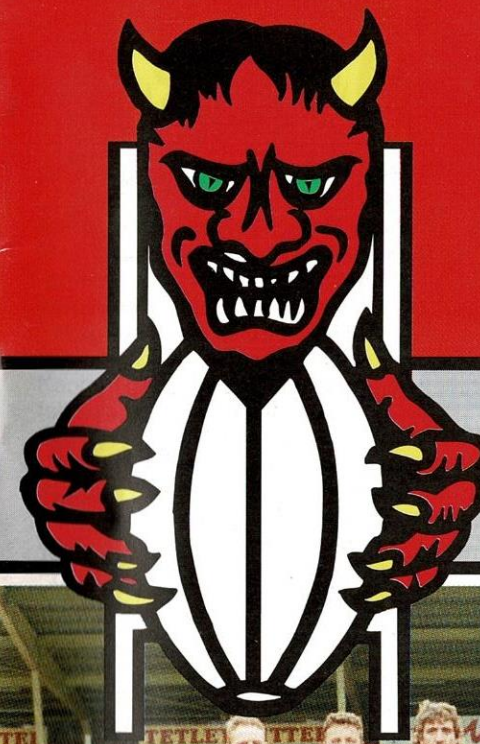
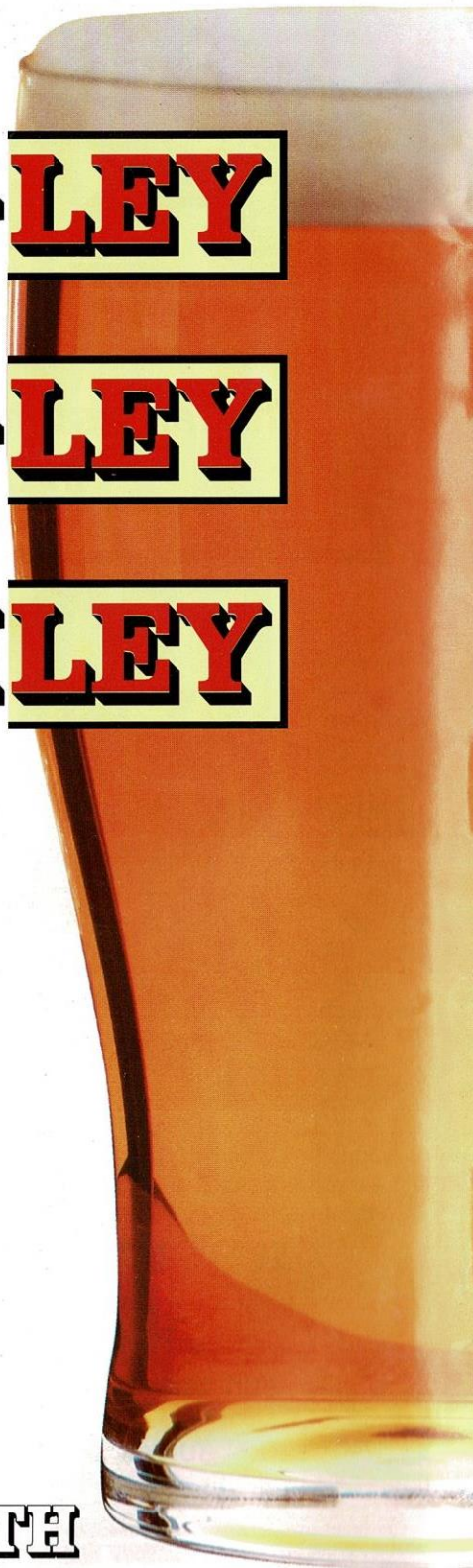


LOVING **LEY**
SPORTING **LEY**
DEVILISH **LEY**



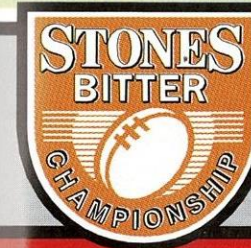
FAMOUS **LEY** SMOOTH



SALFORD
RUGBY LEAGUE CLUB

Club Sponsor

**TETLEY
BITTER**



V. OLDHAM

DIVISION ONE
KICK OFF 3.00p.m.

FRIDAY, 1st APRIL, 1994
OFFICIAL PROGRAMME £1.

RED DEVILS REVIEW

SALFORD FOOTBALL CLUB

(1914) LTD



THE PAVILION, WILLOWS ROAD,
SALFORD M5 2ST
TELEPHONE: 061-737 6363

OFFICIALS

CHAIRMAN: J.A. WILKINSON

Chief Executive: D.M. TARRY

Directors:

A. BANNISTER, H. CLAGUE,
J. DARBYSHIRE, R. FOSTER,
R. KANEEN, J. OAKES, A. WHITE,
C.H. WYNNE.

Company Secretary: G. McCARTY

Coaching Staff:

Manager: G. JACK

Coach: H. CARTWRIGHT

Alliance Coach: S. O'NEILL

Hon. Club Surgeon:

Mr. D.W.M. MACKECHNIE M.B., F.R.C.S.

Club Doctors:

DR. B. MILLER, DR. A. BROWN,
DR. K. JONES.

Hon. Club Solicitors:

D.C.S. PILLING

(Widdows, Pilling & Co., Walkden)

Physiotherapists:

R. WHITTAKER, L. ATHERTON

Match Magazine Editor:

D. PLATT

Match Photographer:

K. PLATT

Timekeeper:

N. ROBINSON

Head Groundsman:

G. LEWIS

Kitman:

J. LATHAM.

CLUB HONOURS
Rugby League Champions: 1913-14, 1932-33, 1936-37, 1938-39, 1973-74, 1975-76.
Runners-up: 1901-02, 1902-03, 1903-04, 1933-34.
Rugby League Challenge Cup: 1938.
Rugby League Challenge Cup Runners-up: 1900, 1902, 1903, 1906, 1939, 1969.
Lancashire League Champions: 1932-33, 1933-34, 1934-35, 1936-37, 1938-39.
Runners-up: 1913-14, 1929-30, 1939-40, 1969-70.
Lancashire Challenge Cup: 1931, 1934, 1935, 1936, 1972.
Runners-up: 1929, 1938, 1973, 1974, 1975, 1988, 1990.
Premiership Trophy Runners-up: 1976.
John Player Special Trophy Runners-up: 1972-73.
BBC Floodlit Cup: 1974-75.
Lancashire R.U. Championship: 1892-93.
Division Two Championship: 1990-91.
Division Two Premiership: 1990-91.

what's on. . . . at SALFORD



PETER WILLIAMS

PETER'S MILESTONE

Give a special cheer for centre Peter Williams when he runs out this afternoon as it will be his 150th appearance for the Reds since he turned professional from Orrell R.U. club in March 1988.

ALLIANCE FINAL

Make a note in your diary for Thursday April 14th when Salford take on Oldham in the Alliance Cup Final at Watersheddings, kick off 7.30p.m. Oldham are unbeaten at the top of the Alliance Second Division whilst Salford are riding high in the first division. Why not go along and give the lads a cheer for what promises to be a cracking final.

BIRTHDAY BOY

Congratulations to Andy Burgess who is celebrating his 24th birthday today.

AWARDS NIGHT

The end of season awards night will take place on Monday 9th May in the Variety Centre. With only two home fixtures remaining the pace is hotting up for the Player of the Year award (see page 26).

TRAVELLING TO WAKEFIELD?

If you intend going by car to the away fixture at Wakefield on Sunday 10th April, then try the following route:-

Leave the M62 at Junction 29 (M1)

follow signs Wakefield M1.

In 1.6 miles leave at Junction 41 (A650)

In 2.1 miles at roundabout take 2nd exit A61.

At next roundabout take 1st exit (signed City Centre)

In Wakefield, follow signs Doncaster A638 for Belle Vue ground on right. Total 6.5 miles from M62.

**"THE GREATEST CRIME OF ALL
IS TO DO NOTHING"**

**SAFER SALFORD 061-793 7333
WHAT ARE YOU DOING?**

CLUBCALL

**RESULTS, REVIEWS, INFORMATION.
LIFE LINE WINNERS, SUPER SEVEN WINNERS.
UP-DATED EACH DAY
TEL: 0891-12-16-44**

2

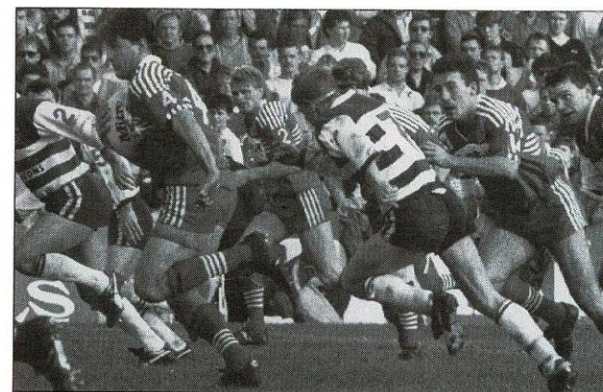
39p per minute cheap rate.
49p per minute at all other times.

This afternoon we welcome Oldham to the Willows for what should be an intriguing fixture.

We have already beaten our opponents at Watersheddings (20-8) on Boxing Day but the Roughyeds are a different proposition now as they fight for Division One survival under the guidance of Aussie player/coach Bob Lindner.

Promoted from Division Two at the end of the 1992/93 campaign Oldham were quick to secure the services of Kangaroo Test star Lindner and his signature was followed by the likes of Andy Goodway (from Leeds), Shaun Irwin (Castleford), New Zealander Mike Kuiti (Rochdale Hornets), Martin Crompton (Wigan), David Jones (Wakefield Trinity) and Chris Parr (Swinton). All these players had the necessary experience for Oldham to be geared up to the rigours of rugby in the top flight and a brave future was forecast for Peter Tunks charges. However, the best laid plans can often come unstuck and early defeats at the hands of Halifax (away) and Bradford Northern (home) were a setback for the club. A home victory followed against Hull K.R. (28-14) to restore a little faith but this was overturned by three successive defeats. Then they shocked their critics by beating Leeds at home, 21-6, and then Hull, away, 33-8 to give the impression that they had turned the corner. Sadly, this was not the case and things went from bad to worse with seven successive defeats, halted only by a 30-20 victory at Hunslet in the Challenge Cup. The final straw came at Doncaster where they made their exit from the Cup by virtue of a 20 points to nil defeat and consequently Peter Tunks parted company with the club.

Ironically, it was his last signing, Glen Liddiard, who is now making the side tick from the problematic stand off position. He has made an immediate impact in the number six jersey and coach Bob Lindner is obviously pinning a lot of faith in his fellow countryman. Recent wins against Hull and Featherstone Rovers have been a great boost for the club's fight against First Division survival.



Peter Williams makes a break against Oldham in the 1988-89 season. (Pic: Kieran Platt).

3

what's on

IN

RUGBY LEAGUE

TODAY'S DIVISION ONE FIXTURE CARD

FRIDAY, APRIL 1st, 1994

Castleford	v.	Featherstone R.
Halifax	v.	Bradford N.
Hull	v.	Hull K.R.
St. Helens	v.	Wigan
Sheffield E.	v.	Leigh
Wakefield T.	v.	Leeds
Warrington	v.	Widnes

MONDAY, APRIL 4th, 1994

Bradford N.	v.	Hull
Featherstone R.	v.	Wakefield T.
Hull K.R.	v.	Sheffield E.
Leeds	v.	Halifax
Leigh	v.	Salford
Oldham	v.	Castleford
Widnes	v.	St. Helens
Wigan	v.	Warrington

LEAGUE TABLE

	P	W	D	L	F	A	PTS.
Bradford N.	23	19	0	4	618	407	38
Warrington	25	19	0	6	502	337	38
Wigan	22	17	0	5	578	317	34
Castleford	24	16	1	7	651	360	33
Halifax	24	14	2	8	532	425	30
St. Helens	23	13	1	9	486	407	27
Sheffield E.	24	13	1	10	519	531	27
Widnes	24	12	0	12	429	489	24
Leeds	23	11	1	11	452	442	23
Featherstone	25	11	1	13	517	545	23
Hull	24	9	2	13	348	388	20
Salford	25	9	0	16	440	523	18
Wakefield T.	25	8	1	16	357	527	17
Oldham	25	7	1	17	446	576	15
Hull K.R.	25	7	0	18	418	688	14
Leigh	25	2	1	22	304	689	5

**PLEASE NOTE
NO SMOKING**
is allowed in any part
of the Main Stand
including the
High Level Stand

GARRY JACK

TALKING



Welcome back to the Willows for this afternoons important Good Friday league fixture against Oldham, who like ourselves are after all the points that they can muster.

Last week-end they gained two valuable points with a thoroughly deserved victory over an apparently disappointing Featherstone Rovers side but most importantly for Oldham was the fact that the two points enabled them to move out of the relegation placings at the foot of the table.

A previous victory over Hull and a draw against Wakefield Trinity have helped towards Oldham taking seven points out of their last ten and they are certainly a vastly improved side which means that we must be really on song to beat them this afternoon.

Although we have lost our last 3 matches you must remember that our opponents have been clubs at the top of the league. Bradford Northern and Warrington currently share top spot while Castleford are in fourth spot. On each occasion I have been pleased with our undoubted commitment to the cause but lady luck had most certainly not been on our side.

It has been very frustrating that we have not picked any points up in those games where we have run the opposition mighty close.

Now we must pick ourselves up and get back in the winning routine. All the lads are fully aware of the consequences should we fail. I can assure you that there will be 100% total commitment for this and the remaining games of the season.

Finally a warm welcome to an old friend of mine, Bob Lindner, who has played alongside me on many occasions for the Aussie Test side.

GARRY JACK

ALL THE RUGBY
LEAGUE NEWS,
REPORTS AND
PICTURES

LEAGUE
Express

Available from the
club every Monday,
or from a
newsagent near to
you.



**WORLD LEADERS
IN THE MANUFACTURE
OF
WELDING & CUTTING EQUIPMENT**



**TELEPHONE
061 793 8127**



**OFFICIAL SHIRT SPONSORS
OF SALFORD R.L.F.C.**

AND

THE CEBORA LANCE TODD TROPHY



THE WILLOWS *LIFELINE SOCIETY*



JASON CRITCHLEY

Lifeline £1,000 Winners . . .

J. TAYLOR, STRAWBERRY ROAD, SALFORD—No. 0370.

A. JAMES, ORIVETTO AVENUE, SALFORD—No. 0529.

WHY NOT JOIN
ME AND BECOME A
MEMBER OF
LIFELINE?
IT PAYS!

**£1,000 CASH PRIZE
EVERY WEEK
DISNEY LAND HOLIDAYS
EVERY THREE MONTHS
MAJOR JACKPOT PRIZES
EVERY THREE MONTHS
FOR MORE INFORMATION
TEL: 061-736-6564**



WHY NOT BE A
'DEVIL' AND JOIN
LIFELINE NOW
Call the Pool's Office
for further details.

STAY AHEAD OF THE PACK



THE STORY SO FAR

WHEN OLDHAM RULED THE ROOST



BERNARD GANLEY

Founder members of the breakaway Northern Union in 1895-96, Oldham's history stretches back to 1876 when they played their home matches at Glodwick Mill. A move to Clarksfield, where admission could be charged, was made a couple of seasons later before the club finally settled at its present headquarters in 1889.

In that first "pioneering" season of the Northern Union, Oldham finished 4th in the league and when the table was split into County sections they headed the table in 1897-98.

Another early honour for the club was when they won the Challenge Cup, being the first Lancashire side to take the Trophy by beating Hunslet 19 points to 9 at Fallowfield, Manchester.

Although Oldham have subsequently won the Challenge Cup in 1925 and 1927 and been runners-up

on four occasions, they have never appeared at Wembley.

However they came mighty close to getting there in 1964 when they drew 5-5 against Hull K.R. in the semi-final. They were actually winning

the replay 17-14 in extra time when bad light caused the match to be abandoned. It is now history that they lost the second replay by 12 points to 2 at Huddersfield.

Probably the most spectacular decade for

the club was the fifties where they were consistently high in the league and their successes in other competitions brought an upsurge in interest in the club.

In 1956-57 Oldham ended the season with a clear lead of six points over second club Hull and in the same season they won the Lancashire Cup as well as beating Hull in the play-off by 15 points to 14.

The following season when Oldham headed the table, again, Bernard Ganley established a club record 200 goals in a season and also a record 412 points.

Those were indeed heady days for the club and their success earned International recognition for the players with Alan Davies, Ken Jackson, Syd Little, Frank Pitchford, Ike Southwood, Derek Turner, Charlie Winslade and of course Ganley, all representing G.B. Indeed, Davies, Jackson and Pitchford all Toured Down Under in 1958. Great days for a club formed from a group of enthusiasts at the Prince Albert Hotel in 1876.

DID YOU KNOW?

An attendance of 62,199 watched Oldham beat Hull at Odsal to land the Championship play off final in 1956-57.

ON THE ROAD TO RECOVERY



Scott Naylor pictured at the pre-season photo call. (Photo: Kieran Platt).

TETLEY BITTER

8

"It's good to be back in action again"

If ever a player deserved a bit of luck then that award would surely go to Scott Naylor who is now fighting his way back from the latest in a catalogue of injuries he has received in his so far relatively short career.

His most recent injury—a damaged hamstring sustained at Hull last September, has been troublesome enough but even that pales into insignificance when you realise that he is lucky to be playing rugby at all after a freak injury several years ago laid him up for two years.

As a teenager, Scott was a target for all the big clubs and when it came to the crunch the Leigh born youngster plumped for Wigan. At that time though he had played for England Schools against France in Perpignan and scored a hat-trick.

On his return he signed for Wigan but shortly after he developed a blockage in the artery at the back of his left knee. He underwent an operation which involved taking an artery from his groin and performing an eight inch swap which required 80 stitches in the wound. He was told that he shouldn't play again but his determination to return to the game plus help from his parents and Wigan physios Denis Wright and Keith Mills aided him in his comeback. So after two years he was ready to resume his career but by now he was 6ft 2ins and over 16 stone.

He played in the second row and on the wing for the first team but began playing regularly in his favourite centre position for the Alliance side. It was there that Salford realised his potential and they moved in with a bid for the £20,000 listed player.

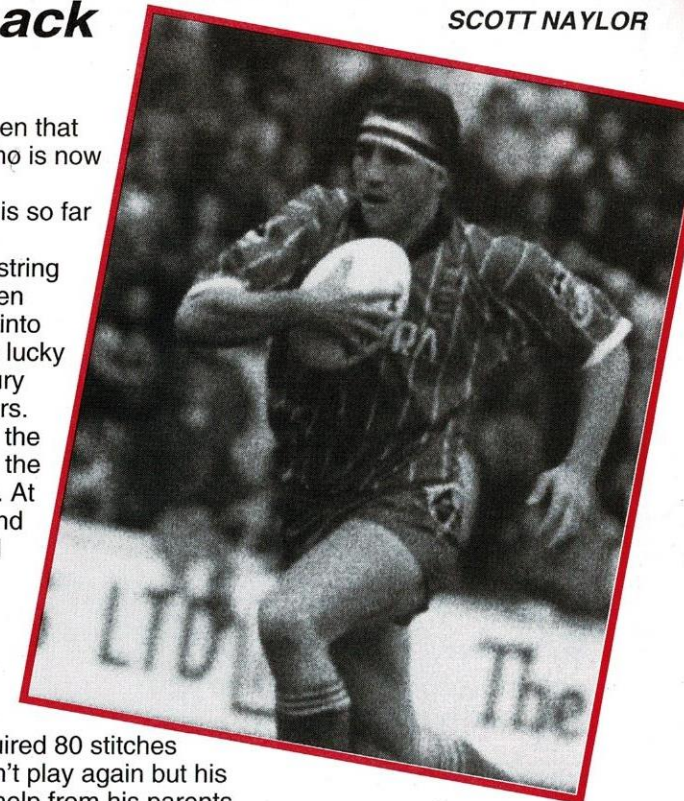
He joined the Reds in the 1993 close season and immediately forced his way into the first team with good displays against Barrow and Swinton in the pre-season friendlies. His size made him the perfect centre partner for Jason Critchley and the pair of them developed an understanding from the word go. However after just four matches he sustained the hamstring injury at the Boulevard and although he made a try scoring return for the Alliance side in November the injury went again. The specialist decided that an operation was necessary last December and now the frustration is hopefully over for the 22 year old. A couple of games in the Alliance sharpened him up and he made his return to first team action as substitute at Warrington last Sunday. Now, we are all keeping our fingers crossed that Scott can continue his promising career—injury free, of course!

IT'S A FAMILY AFFAIR!

Remember Rugby League is a sport for all the family to enjoy and children are made welcome at the Willows. Obscene language will not be tolerated.

9

SCOTT NAYLOR



STATISTICS

Represented England Schools v. France at Perpignan.

Signed for Wigan on June 1988. Made his debut for Wigan against Dewsbury at Central Park in the Regal Trophy on October 29th 1991.

At Wigan

	P	Sub	T	G	Pts
1991-92	1	-	-	-	-
1992-93	-	1	-	-	-
Totals	1	1	-	-	-

Transferred to Salford in July 1993 and made his debut for the Reds against Sheffield Eagles on August 29th 1993.

At Salford (to date)

	P	Sub	T	G	Pts
1993-94	4	1	-	-	-

SUPER S

DAILY DRAW

Top Prize £1000

Daily Prize £100

Plus Many Cash
Consolations

E V E N

To become a Salford Agent
call in at the Pools Office now
or telephone 061-736 6564

JOIN THE WINNING TEAM

- ★ Free Match Tickets ★ Agents Draws
- ★ Giant Discounts ★ Share in BIG Cash Prizes
- ★ Great Commissions to be earned

**FREE ADMITTANCE
TO ALL LEAGUE MATCHES
SAVE £90**

**ON ADULT ADMISSION
PRICES AS A SUPER
SEVEN AGENT**



John Smith's Tests 1994

GREAT BRITAIN V AUSTRALIA

Wembley, London
Saturday 22 October
Old Trafford, Manchester
Saturday 5 November
Elland Road, Leeds
Sunday 20 November

Prices:

Wembley £30.00, £27.00, £24.00, £20.00,
£17.00, £13.00, £8.00.
Olympic Gallery £40.00.

Old Trafford £19.00, £15.00, £10.00.

Elland Road £19.00, £15.00, £10.00.

Send to: Test Ticket Office, The Rugby Football
League, 180 Chapeltown Road, LEEDS LS27 4HT.

Cheques made payable to
The Rugby Football League



TICKET HOTLINE

(Visa/Access bookings) Monday to Friday 9am to 5pm

0532-629991

10



RED DEVILS

IN ACTION



MARK LEE . . . always probing for an opening.
(Photo by Kieran Platt).

LIFELINE DRAW-£1000 EVERY WEEK

11

Welcome

SPORTINGLEY

TETLEY BITTER

FAMOUSLEY SMOOTH

TODAY'S MATCH SPONSOR

12

Out and About

Now that Leeds have made it to the Challenge Cup Final at Wembley, it looks as though Doug Laughton will end speculation about his future at Headingley by signing a new contract.

London Crusaders are certainly breaking the records this season. Their 64-0 hiding handed out to Bramley last Sunday bettered the previous record score of 62-6 attained against Highfield last October.

Former All Black and Leeds R.L. player John Gallagher also set up a personal record of 24 points in the same match from two tries and eight goals.

Also winger Mark Johnson's two tries took his season's tally to 28, which is one better than the previous record of 27 tries set up by John Crossley in the 1982-83 season.

Talking of London Crusaders, it is good to see that former Salford prop Chris Whiteley is leading the way up front for them.

DIVISION TWO

	P	W	D	L	F	A	PTS.
Workington T.	25	18	2	5	584	299	38
Doncaster	25	18	1	6	646	426	37
Huddersfield	25	18	0	7	568	418	36
Batley	25	17	1	7	570	393	35
London C.	25	16	2	7	680	455	34
Keighley C.	25	16	1	8	674	352	33
Dewsbury	25	15	1	9	660	357	31
Ryedale-York	25	15	1	9	551	406	31
Rochdale H.	25	14	0	11	586	446	28
Whitehaven	25	11	4	10	456	364	26
Barrow	25	12	1	12	484	610	25
Swinton	25	9	0	16	408	557	18
Carlisle	25	8	0	17	448	716	16
Hunslet	25	2	1	22	337	684	5
Bramley	25	2	0	23	320	733	4
Highfield	25	1	1	23	234	990	3

REMEMBER LAST TIME . . .

Sunday, October 16th, 1988

Division One

SALFORD 38 . . . OLDHAM 20

Salford: Gibson (t); Evans (t); Bentley, Williams (2t), Hadley (t); Shaw, Cairns; Herbert, Moran, Brown (5g), Gormley (t), Worrall, Horo (t). Subs: Jones (for Horo), Blease (for Worrall).

Oldham: Round (t); Meadows, Henderson, O'Sullivan, Robinson (t); Ford, Bates; Clawson, Ruane (2g), Fairbank, Hawkyard (t), Marsden, Flanagan. Subs: Irving, Bardsley (t), (both played).

Attendance: 5,594.

Referee: P. Volante (Batley).

JOHN JAMESON & SON

IRISH WHISKEY

TOP TACKLE COUNT

The top tackle count winner after each home match receives a bottle of

Jamesons Irish Whiskey with a special trophy to the top tackler of the season.

Top Tacklers v. HALIFAX . . .

IAN BLEASE30

ANDY BURGESS24

TERRY O'CONNOR22

GOLDEN GAMBLE

The Golden Gamble ticket continues this season.

The object of the ticket is to generate Club funds whilst paying back 50% of the proceeds.

The draw will take place on the pitch at half-time and the lucky winner paid out.

Tickets are £1 each. Winner at the Bradford game was ticket number 160101, who won £128.

PROGRAMME DONATED BY:

LANCASHIRE DAIRIES LTD.

50 DERBY STREET MANCHESTER

Tel: 061-834 8772

13



**Put your vehicles
on contract hire
and fix the cost of
business motoring**



Whether you run five, fifty or five hundred cars, contract hire offers you a great deal more. Not only do you get the vehicles . . . but also all your motoring needs are looked after and paid for.

With a fixed monthly payment you guarantee your business motoring two, three or four years ahead.

Here are a few mixed monthly payment examples on a selection of cars available from our full range of vehicles.

	WITH MAINTENANCE	NON MAINTENANCE
BMW 318i.....	£357.42	£320.42
Vauxhall Cavalier 1.6iLS ...	£270.92	£245.42
Mercedes 190E	£349.22	£301.92
Ford Escort 1.3CFi	£214.82	£188.92

The above figures are correct at the time of going to press.

Whether you are looking for vehicle **OR** capital equipment funding, ring our Wigan office to discuss our comprehensive range of services.

0942 324455 Academy Leasing plc **0942 324455**
The Granary, Wallgate, Wigan WN1 1BA

Appearances & Scorers

Players

	1993-94 SEASON						CAREER TOTALS					
	App.	Sub	Tries	Goals	DG	Pts.	App.	Sub	Tries	Goals	DG	Pts.
GREG AUSTIN	3	-	-	-	-	-	50	1	25	24	1	149
DARREN BETTS	-	2	-	-	-	-	-	3	-	-	-	-
MARTIN BIRKETT	11	1	-	6	-	12	103	12	33	124	-	380
STEVE BLAKELEY	22	5	4	55	1	127	36	5	8	89	1	211
IAN BLEASE	13	-	3	-	-	12	181	21	44	-	-	176
KERI BROOKFIELD	2	-	-	-	-	-	3	-	-	-	-	-
SHAUN BROWN	11	5	1	11	1	27	32	11	6	23	5	75
ANDY BURGESS	30	-	4	-	-	16	114	23	24	5	-	106
JASON CRITCHLEY	30	-	21	-	-	84	59	1	38	-	-	152
TEX EVANS	11	-	2	-	-	8	133	5	67	-	-	268
PAUL FORBER	24	1	9	-	-	36	36	1	12	-	-	48
PHIL FORD	27	-	11	-	-	44	54	-	32	-	-	128
JOHN GILFILLAN	4	3	-	-	-	-	60	15	20	-	-	80
ANDREW GREGORY	15	1	3	-	1	13	16	1	3	-	1	13
SHANE HANSEN	1	-	-	-	-	-	48	13	5	-	-	20
TONY HOWARD	-	1	-	-	-	-	17	1	4	-	-	16
GARRY JACK	30	-	9	-	-	36	46	-	12	-	-	48
MARK LEE	28	-	4	-	2	18	130	3	16	-	22	86
BOB MARSDEN	6	14	4	-	-	16	6	14	4	-	-	16
SCOTT NAYLOR	4	1	-	-	-	-	4	1	-	-	-	-
MIKE NEIL	8	1	1	-	-	4	8	1	1	-	-	4
TERRY O'CONNOR	23	3	2	-	-	8	25	9	2	-	-	8
PAUL O'NEILL	7	-	2	-	-	8	15	4	10	-	-	40
IAN POTTS	1	2	-	-	-	-	2	2	1	-	-	4
CRAIG RANDALL	1	2	-	-	-	-	3	6	-	-	-	-
WAYNE REID	3	4	-	-	-	-	46	15	14	-	-	56
GED STAZICKER	7	4	-	-	-	-	67	8	5	-	-	20
CHRIS TAURO	14	4	2	-	-	8	14	4	2	-	-	8
RICHARD WEBSTER	1	4	1	-	-	4	1	4	1	-	-	4
PETER WILLIAMS	23	1	4	-	-	16	141	8	33	-	-	132
STEVE WYNNE	1	-	-	-	-	-	1	-	-	-	-	-
DAVID YOUNG	29	-	3	1	-	13	85	-	7	8	-	44

Up to and including v. Warrington (away).

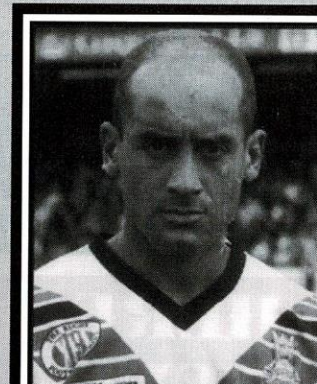
TOP TRY SCORER'S TROPHY

Donated by . . .

ROSSENDALE GROUP

*The player with the most tries at the end of
the season will receive the trophy and a
cheque for £200.*

1992/93 winner PHIL FORD.



PHIL FORD

BACKTRACK

DAVIES BOOTS OUT REDS!

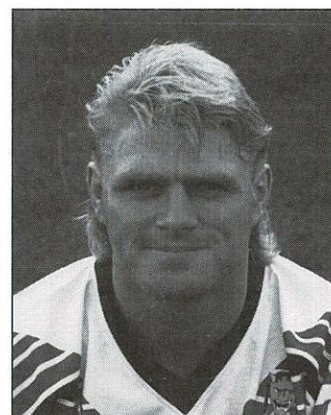
Sunday March 27th 1994

Division One

WARRINGTON 18 . . . SALFORD 14

The fact that Salford scored three tries to the home sides two was scant reward for the Reds who really took Wire all the way and any neutrals in the crowd could have been excused for wondering which team was in line for the Division One title. The Reds showed plenty of commitment last Sunday and it was cruel that they should leave Wilderspool empty handed.

Early on, Warrington took the initiative and after Davies had missed a penalty attempt, he joined the attack and put Garry Jack under pressure with a high kick that saw the ball swirl about in the wind. The Reds full-back collided with an upright while fielding the kick and ELLIS pounced on the loose ball to score a try converted by DAVIES. (6-0).



TEX EVANS . . . comeback try.

In the 7th minute though, the Reds stormed back to score through JASON CRITCHLEY after he gathered up Mark Lee's kick and raced to the line for an unconverted try. (6-4).

Salford were now coming more into the game and a move involving Jack, Evans and Williams caused panic in the Wire defence.

However, when the referee awarded Warrington a penalty for a foul tackle on Tees, DAVIES stepped up to kick the goal. (8-4).

Three minutes later, a Reds surge ended with BLEASE crashing over for a try converted by BLAKELEY to put Salford in the lead and in the 28th minute they extended the score.

Warrington were on the attack on half way when the ball was fumbled by Penny. EVANS gathered up the loose ball and sprinted away from Davies to score an unconverted try (8-14).

Naylor came on as substitute for the injured Evans and Marsden

replaced the limping Blease at half time.

Immediately after the break Salford were caught offside and DAVIES kicked the resultant penalty. (10-14). In the 50th minute, the Reds lead was cut to just two points when DAVIES landed another penalty following a high tackle on Mackey.

Salford had their chances nevertheless but on the hour Warrington transferred the ball to the left wing where MYLER pounced to score an unconverted try. (16-14).

DAVIES sealed the Reds fate with three minutes to go when he added another penalty goal, which concluded the scoring.

WARRINGTON: Penny; Forster, Bateman, Davies (5g), Myler (t); Ellis (t), Mackey; Teitzel, Thursfield, Phillips, Jackson, Sanderson, Shelford.

Subs: Darbyshire (for Teitzel), Tees (for Jackson).

SALFORD: Jack; Critchley (t), Austin, Williams, Evans (t); Blakeley (g), Brown; Young, Lee, O'Connor, Forber, Blease (t), Burgess.

Subs: Naylor (for Evans), Marsden (for Blease).

*HT: 8-14. Attendance: 4,587. Referee: S. Cummings (Widnes).

**HERE
NEXT**

HULL K.R.

Division One—Sunday, April 17th 1994

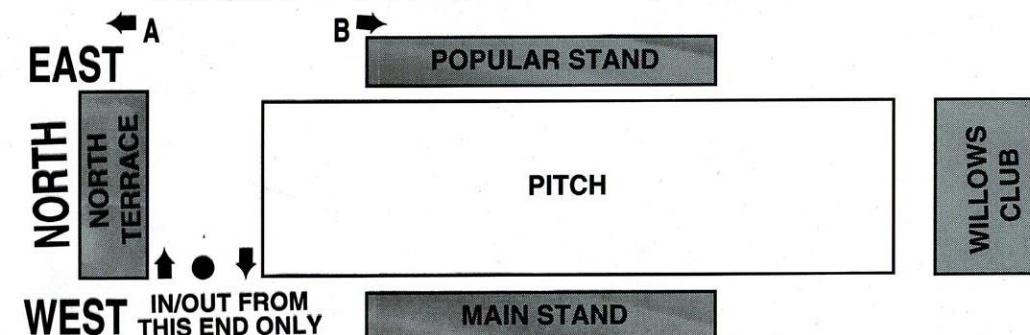
Kick-off 3.00 p.m.

16

FOR YOUR SAFETY

Spectators leaving the ground have experienced over-crowding in the passageway adjacent to the North East Terrace. To avoid unacceptable delays when leaving the ground and to ensure your safety the following measures will be adopted at today's match and all future fixtures.

1. Entrance to the North Terrace will only be from the West Side (see plan).
2. Exit from the North Terrace will only be from the West Side (see plan).
3. The gate at "A" (see plan) will exit one way towards Edward Avenue.
4. The gate at "B" (see plan) will exit one way towards Willows Road.



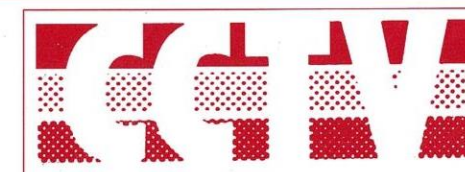
PITCH INVASIONS

Under the strict laws relating to ground safety, spectators are banned from entering the field of play at any time before, during or after the match.

The R.L. Council has introduced an automatic fine of £500 on clubs where a pitch invasion takes place.

Parents and School Teachers are particularly asked to educate the numerous young fans of the need to stay off the field, especially as teams now acknowledge the valued support of fans throughout and, particularly after the match.

This club joins the R.L. in asking fans to remain in their place throughout the match to protect the good name of the 13-a-side code.



**CCTV Systems Limited—The Specialists in Closed
Circuit Television Surveillance Equipment,
Monochrome & Colour, Sales, Service, Installation
& Maintenance.**

**31a, Astley Street, Tyldesley, Manchester M29 8HG.
Telephone: (0942) 894008. Fax No: (0942) 893339**

17

TRY US FIRST FOR

Proton

●SALES

●SERVICE

●PARTS

MOTABILITY

OPEN

MONDAY - FRIDAY

9AM TIL 7PM

SATURDAY

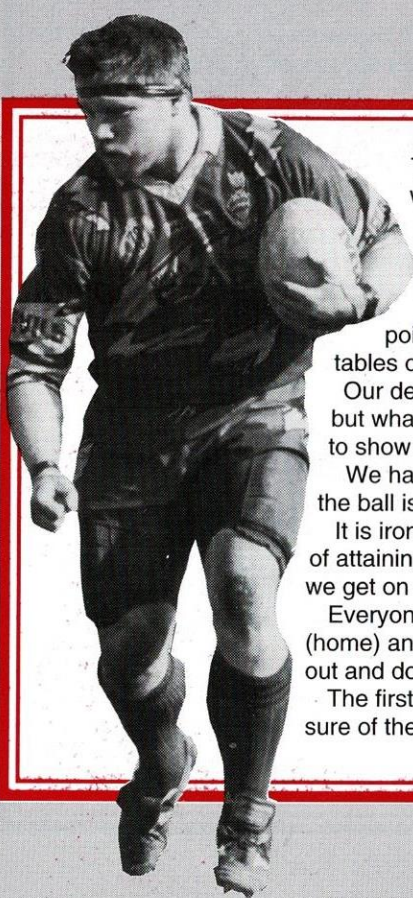
9AM TIL 5PM

SUNDAY

11AM TIL 5PM

RRG Swinton

MOORSIDE ROAD, SWINTON, TEL:061-793 6180



CAPTAIN'S CORNER

Today's game against Oldham is a real crucial one for us to win and with our visitors picking up a few points in recent games, the pressure is beginning to mount.

We have had three hard games recently against top class opposition and quite frankly we could have got a result from each of them. On each occasion we have only been a few points in arrears and with a bit of luck could well have turned the tables on them.

Our defence has been good and the commitment has shown through but what can you say at the end of the day when we have had nothing to show for our efforts:

We have now completed our fixtures against the top eight clubs so the ball is in our court as to where we go from here.

It is ironic to think that only a couple of matches ago we were thinking of attaining a top eight place but that dream has been put on hold whilst we get on with the job of picking up some valuable points.

Everyone realises how important the Easter fixtures against Oldham (home) and Leigh (away) are but now the chips are down we have to go out and do the business.

The first task in hand is to show the necessary commitment and make sure of the two points this afternoon.

Cheers for now, David Young

RED DEVILS FIXTURES SEASON 1993-94

MONTH & DAY	DATE	OPPONENTS	VENUE	K-O	RESULT	F	A	TRIES	GOALS	ATT.
AUGUST										
Sunday	8	Barrow (Testimonial)	A	2-30	Won	30-13		Naylor (2), Critchley, Coussons, Potts, Swift	Tyler (3)	700 est.
Sunday	22	Swinton (Testimonial)	A	3-00	Won	48-6		Forber (2), O'Neill (2), Critchley, Williams, Young, Birkett, Ougley	Blakeley (5), Birkett	1,300 est.
Sunday	29	Sheffield Eagles	H	3-00	Lost	20-32		Blakeley, Forber, Burgess	Blakeley (4)	3,119
SEPTEMBER										
Sunday	5	St. Helens	A	3-00	Lost	14-22		Blease, Jack	Blakeley (3)	7,587
Sunday	12	Widnes	H	3-00	Won	33-19		Critchley (2), Jack, Ford, Blease	Blakeley (6), Lee (dg)	4,293
Sunday	19	Hull	A	3-15	Lost	12-28		Forber, Ford	Blakeley (2)	3,983
Sunday	26	Leeds	H	3-00	Won	23-18		Critchley (2), Neil	Blakeley (5), dg.	4,943
OCTOBER										
Sunday	3	Wigan	H	3-00	Lost	2-24			Blakeley	8765
Friday	8	Halifax	A	7-30	Lost	12-20		Blakeley, Ford	Blakeley (2)	5096
Sunday	17	FREE (Sat. G.B. v. NZ)	H	3-00	Lost	0-34				3769
Sunday	24	Castleford	A	3-00	Lost	24-44		Critchley (2), Burgess, Evans	Blakeley (4)	5528
Sunday	31	Bradford Northern	A	3-00	Lost					
NOVEMBER										
Friday	5	Warrington	H	7-30	Lost	6-20		Critchley	Blakeley	2746
Saturday	13	Leeds (Regal Trophy 2)	H	3-00	Won	21-12		Lee (2), Critchley, Forber	Blakeley (2), Brown (dg)	1799
Sunday	21	Hull K.R.	A	3-15	Won	10-6		Williams, Jack	Birkett	2529
Sunday	28	Featherstone Rovers	H	3-00	Won	34-24		Critchley (2), Jack (2), Lee, Brown, Ford	Birkett (3)	3526
DECEMBER										
Sunday	5	Wakefield Trinity	H	3-00	Won	22-8		Critchley (2), Jack, Ford, Forber	Brown	3525
Tuesday	14	Batley (Regal Trophy Round 3)	A	7-30	Won	12-8		O'Connor, Gregory	Blakeley (2)	809
Sunday	19	Hull (Regal Trophy quarter-final)	H	3-00	Won	26-6		Gregory (2), Marsden, Forber, Tauro	Brown (3)	3207
Wednesday	22	Sheffield Eagles	A	7-30	Lost	22-28		Forber (2), Jack, Webster	Brown (2), Blakeley	2628
Sunday	26	Oldham	A	3-00	Won	20-8		Williams, Ford, Marsden	Blakeley (4)	4576
JANUARY										
Sunday	2	Leigh	H	3-00	Won	23-10		Williams, Ford, Forber, Burgess	Blakeley (3), Gregory (dg)	4338
Saturday	8	Wigan (Regal Trophy semi-final)	H	2-15	Lost	12-18		Ford, Marsden	Blakeley (2)	7483
Wednesday	12	St. Helens	A	7-30	Won	34-2		O'Neill, Critchley, Ford, Young, Tauro, O'Connor	Blakeley, Brown (4)	4439
Sunday	16	Widnes	A	3-00	Lost	22-30		Critchley (3), Jack, O'Neill	Brown	4589
Sunday	23	Hull	H	3-00	Lost	11-22		Critchley, Ford	Young, Lee (dg)	3459
Sunday	30	Castleford (Silk Cut Chiall. Cup Rd 2)	A	3-30	Lost	4-36		Blakeley		5669
FEBRUARY										
Sunday	6	Leeds	A	3-00	Lost	16-22		Critchley, Marsden	Blakeley (4)	8125
Sunday	20	Wigan	A	3-00	Lost	12-34		Jack, Young	Blakeley (2)	12091
Sunday	27	Halifax	H	3-00	Won	34-14		Critchley (2), Ford, Young, Forber, Burgess.	Blakeley (5)	4034
MARCH										
Friday	18	Bradford Northern	H	7-30	Lost	6-14		Lee	Blakeley	3189
Wednesday	23	Castleford	A	7-30	Lost	14-22		Williams, Blakeley, Critchley.	Blakeley	3603
Sunday	27	Warrington	A	3-00	Lost	14-18		Evans, Blease, Critchley.	Blakeley	4587
APRIL										
Friday	1	Oldham	H	3-00						
Monday	4	Leigh	A	3-00						
Sunday	10	Wakefield Trinity	A	3-00						
Sunday	17	Hull K.R.	H	3-00						
Sunday	24	Featherstone Rovers	A	3-30						

IMPORTANT NOTICE ...

It has been brought to the Club's attention that objects have been thrown at the referee and touch judges in recent matches and there have also been instances of spitting as the match officials have been leaving the field. This behaviour is deplored by the Club as we wish to continue with the friendly atmosphere built up over the years. Any continuance of such behaviour could result in a heavy fine for Salford Rugby League Club.



TEAM

SALFORD

NEWS

SCRUMS				PENALTIES			
1	2	3	4	1	2	3	4
5	6	7	8	5	6	7	8
9	10	11	12	9	10	11	12
13	14	15	16	13	14	15	16
17	18	19	20	17	18	19	20

2. Right wing three-quarter
JASON CRITCHLEY

3. Right centre three-quarter
PETER WILLIAMS

1. Full-back
GARRY JACK

4. Left centre three-quarter
SCOTT NAYLOR

5. Left wing three-quarter
TEX EVANS

6. Stand-off half-back
STEVEN BLAKELEY

7. Scrum half-back
SHAUN BROWN

8. Front row forward
DAVID YOUNG

9. Hooker
MARK LEE

10. Front row-forward
TERRY O'CONNOR

11. Second row forward
PAUL FORBER

13. Loose forward
ANDY BURGESS

12. Second row-forward
IAN BLEASE



TODAY'S REFEREE

NEIL WOOD
(Keighley)

31-year-old Neil Wood was appointed a Grade One referee in 1992-93. This will be only his second visit to the Willows after taking our match against Wigan last October.



Touch Judges:
J. BROADHEAD (Red flag)
P. WALTON (Yellow flag)

SUBSTITUTES

- 14.
- 15.

- 14. PAUL TOPPING
- 15. NIGEL HESLOP

SUBSTITUTES

12. Second row-forward
BOB LINDNER

13. Loose forward
MIKE KUITI

11. Second row forward
SHANE TUPAEA

10. Front row-forward
ANDY GOODWAY

9. Hooker
JOHN CLARKE

8. Front row forward
IAN SHERRATT

7. Scrum half-back
MARTIN CROMPTON

6. Stand-off half-back
GLEN LIDDIARD

5. Left wing three-quarter
DAVID JONES

4. Left centre three-quarter
DARREN ABRAM

3. Right centre three-quarter
SEAN IRWIN

2. Right wing three-quarter
SCOTT RANSON

SCRUMS				PENALTIES			
1	2	3	4	1	2	3	4
5	6	7	8	5	6	7	8
9	10	11	12	9	10	11	12
13	14	15	16	13	14	15	16
17	18	19	20	17	18	19	20

TEAM

OLDHAM

NEWS



ABC of OLDHAM R.L.F.C.

AVERAGE GATE, LEAGUE BACKGROUND, ETC.

A—AVERAGE GATE so far this season is 4,002 which is an increase of almost 1,200 spectators on last seasons average of 2,809.

B—BIGGEST WIN this season to date is the 42-6 victory over Leigh in the League fixture at Watersheddings. BIGGEST DEFEAT so far this season was at Odsal where Bradford Northern won the match by 48 points to 16.

C—COACH—Bob Lindner, who took over from fellow Aussie Peter Tunks in February this year.

D—DIVISION ONE—Oldham were promoted to Division One at the end of last season after being runners-

up to Featherstone Rovers in Division Two.

E—ENGLAND—The most recent Oldham player to represent England was Andy Goodway in 1984.

F—FLOODLIGHTS Were first used at Watersheddings on October 20th 1965 when G.B. Under-24s played France.

G—GOALKICKING RECORD Bernard Ganley kicked 14 goals against Liverpool City on April 4th 1959 to create a club record.

H—HIGHEST SCORE 67-6 against Liverpool City on April 4th 1959. HIGHEST DEFEAT

67-11 at Hull K.R. on September 24th 1978.

I—INTERNATIONALS Alan Davies is Oldham's most capped player having made 20 appearances for G.B. between 1955 and 1960.

J—JOE FERGUSON made a career record 626 appearances for Oldham between 1899 and 1923.

K—KERRY—Steve joined Oldham from Salford early last season and was the club's top points scorer in 1992-93.

L—LEAGUE Oldham were one of the founder members of the breakaway Northern Union in 1895-96.

M—MATCH FACTS—Salford and Oldham have met on 9 occasions in League matches at the Willows since the re-introduction of two Divisions in 1973-74. Salford have won 4 of them, Oldham 4 and one has been drawn. Highest Salford score at the Willows—1975-76—Salford won 46-3 (John Player Trophy). Highest Oldham score at the Willows—1961-62—Oldham won 50-4.

N—NICKNAME—Roughyeds.

O—ONCE—The number of times that Oldham have won the Division One title, that being in 1904-05.



Season 1990-91—Steve Kerry faced by Oldham's Ronnie Duane and Tommy Martyn. (Pic: Kieran Platt).

? QUIZ ?

1. Who was top try scorer for Oldham last season?
2. Who was the last player to join Salford from Oldham?
3. When did Oldham last win at the Willows?
4. Which team have Oldham completed a League double over this season?
5. How many games did Peter Tunks play for Salford?

(Answers on page 26).

**SHERIFF PLANT
HIRE AND
SALES**

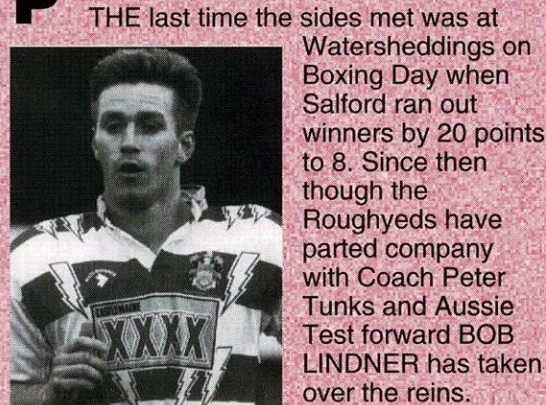
**523 ECCLES
NEW ROAD,
SALFORD,
M5 2DN**

TEL: 061-736 3814

ABC of OLDHAM R.L.F.C.

PLAYING STAFF, RECORD VICTORY ETC.

P -PLAYING STAFF



NIGEL HESLOP

THE last time the sides met was at Watersheddings on Boxing Day when Salford ran out winners by 20 points to 8. Since then though the Roughyeds have parted company with Coach Peter Tunks and Aussie Test forward BOB LINDNER has taken over the reins.

The line-up is pretty much the same but recently Oldham have put up some creditable performances, not least the home victory over Hull which enables them to complete a League double over the Airlie Birds.

At full-back will be Aussie WALLY GIBSON who scored 15 tries last season following his transfer from Huddersfield with whom he spent 3 seasons. Former Wakefield Trinity three-quarter DAVID JONES is likely to be on one wing whilst ex-Swinton flier SCOTT RANSON will be on the opposite flank. Both are good finishers and will need to be watched if they get the necessary service from their centres, who will probably be SHAUN IRWIN and DARREN ABRAM.

The former was an amateur with Redhill prior to turning professional with Castleford in February 1986. He made 4 appearances for the G.B. Under-21 side then progressed to full international status by making four substitute appearances for G.B. in 1990, playing against France, Papua New Guinea and New Zealand twice.

ABRAM was at one time with Trafford Borough before joining Rochdale Hornets in November 1990, later moving to Watersheddings in February 1993.

Aussie stand-off GLEN LIDDIARD is now in his second spell at Oldham after previously making 21 appearances for the club back in the 1985-86 season. He was snapped up on the overseas quota as a replacement for prop forward Se'e Solomona.

Experienced scrum-half MARTIN CROMPTON is playing better than ever at present and keeping former Salford player Steve Kerry out of the side with some sterling displays. He was previously with Wigan and Warrington.

Former Leigh and Swinton player PAUL TOPPING will also be staking his claim for a place in the backs. A prolific points scoring machine, who is a most reliable goal kicker.

Up front Oldham could call on 22-year-old CHRIS PARR who was on Swinton's books last season after joining the Lions from Huddersfield. Alternatively, former Salford player IAN SHERRATT could be at number eight. Ian spent 5 years at Bradford Northern before his move to Oldham in an exchange deal for David Hobbs in 1987. He was transferred to Salford in August 1989 and made 51 appearances for the Reds before rejoining Oldham in a straight swap for Austin Donegan in November 1991.

The vastly experienced ANDY GOODWAY is likely to be at number ten. He, too, has returned to Watersheddings this season after having a successful 8 years at Wigan. He gained 23 caps for G.B. and was a member of the 1984 Touring squad Down Under.

Aussie player/coach BOB LINDNER will probably play in the second row alongside New Zealander SHANE TUPAEA who was previously with Swinton. Ball players in the pack are hooker JOHN CLARKE and Kiwi Test player MIKE KUITI who has had spells at Leeds and Rochdale Hornets.

Also in the reckoning for a place is former England and Orrell R.U. star NIGEL HESLOP and ex-Waterhead A.R.L. forward BARRIE McDERMOTT.

Q -QUEEN'S HONOURS-

Former Hull, Hull K.R., Oldham and Doncaster winger Clive Sullivan was awarded the M.B.E. in 1974 for his services to the game.

R -RECORD ATTENDANCE

28,000 for the League match against Huddersfield on February 24th 1912.

S -SEASONAL RECORDS

MOST TRIES:

49 by Reg Farrar in 1921-22.

MOST GOALS:

200 by Bernard Ganley in 1957-58.

MOST POINTS:

412 by Bernard Ganley in 1957-58.

T -TOP TRY SCORERS

(10 SEASONS)

1983-84 DES FOY/RAY ASHTON13

1984-85 DES FOY15

1985-86 MAL GRAHAM21

1986-87 DES FOY16

1987-88 DES FOY21

1988-89 PAUL ROUND/PAUL LORD9

1989-90 PAUL LORD29

1990-91 PAUL ROUND19

1991-92 TOMMY MARTYN13

1992-93 IVA ROPATI22

U -UP AND COMING

Former Rochdale Hornets player Adrian Belle, a regular try scorer in Oldham's successful Alliance side.

V -VICTORY

Highest ever victory by Oldham was

their 67-6 win against Liverpool City in 1958-59.

W -WINS

Longest sequence of winning matches this season is two.

X -EXIT

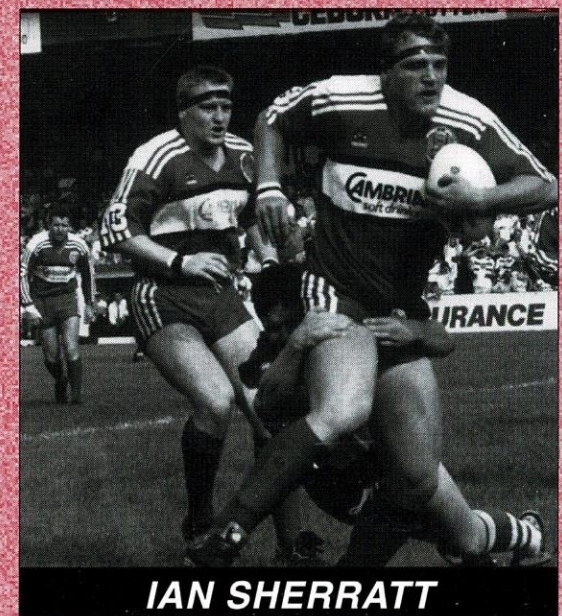
Oldham made an exit from this seasons Challenge Cup at Doncaster where they lost 20-0.

Y -YORKSHIRE

The last Oldham player to represent Yorkshire was David Hobbs in 1986.

Z -ZERO

The last time that Oldham failed to score a point in a match was at Doncaster this season.



IAN SHERRATT

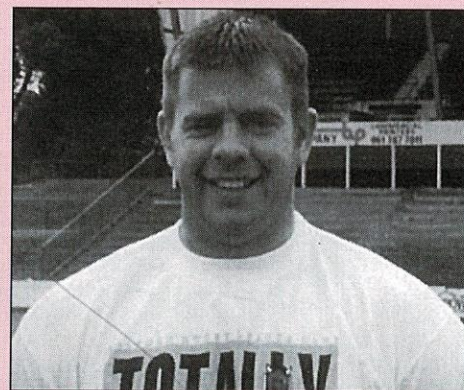
CEBORA
PLAYER OF THE YEAR
SEASON 1993-94

Following each home match, an independent judge is asked to nominate the top three players from the Salford team.

These players are then awarded points of value 3, 2 and 1 respectively. The player receiving the highest number of points at the end of the season will be awarded the Cebora player of the year trophy.

Voting for the home match v. Bradford Northern was as follows:-
 3PTS:- DAVID YOUNG
 2PTS:- MARK LEE
 1PT:- BOB MARSDEN

Leading positions so far:-
 Paul Forber 17, Garry Jack 14, Andy Gregory 12; Terry O'Connor 9, David Young 8, Mark Lee 7, Jason Critchley 6, Peter Williams, Andy Burgess 4 each; Chris Tauro, Steve Blakeley, Shaun Brown 3 each; Mike Neil, Scott Naylor, 2 each; Bob Marsden, Ged Stazicker 1.



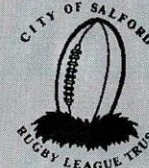
PLAYER OF THE YEAR, 1992-93
IAN BLEASE

QUIZ ANSWERS

1. IVA ROPATI (22).
2. AUSTIN DONEGAN.
3. 1989-90 (18-7) R.L. Cup 2nd round.
4. HULL.
5. EIGHT.

JUNIOR DEVILS

Sponsored by the
 City of Salford
 Rugby League
 Trust



Today we welcome all our Junior Roughyeds friends and here's hoping we all enjoy ourselves.
 Below is printed an application form for next years match mascots.

To be a Red Devils mascot you must meet the following conditions.

- (1) You must be a Junior Devil under-11 at start of season.
 - (2) You must be prepared to accept any match home or away.
 - (3) You must be in possession of a current replica shirt.
 - (4) You must not have been a mascot in the '93/94 season.
- Mascot application forms will be collected at the next Junior Devils meeting in the Variety Centre on Tuesday, 12th April. Alternatively they can be handed in at the Pools Office. The mascots for next season will be drawn at our Sports Day in August.

APPLICATION FOR MASCOT

NameAge.....

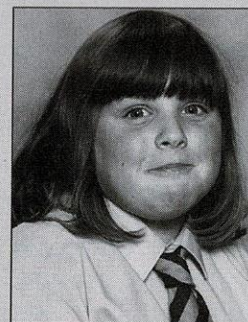
Address

Tel. No.School.....

I am prepared to supply a photograph for inclusion in the match programme.

SignedParent/Guardian

TODAY'S MASCOT



Today's Mascot is Emma Swindells she attends St. Josephs Primary School and her favourite player is our skipper David Young.
 Emma is eleven years old and her hobby is playing and watching rugby.

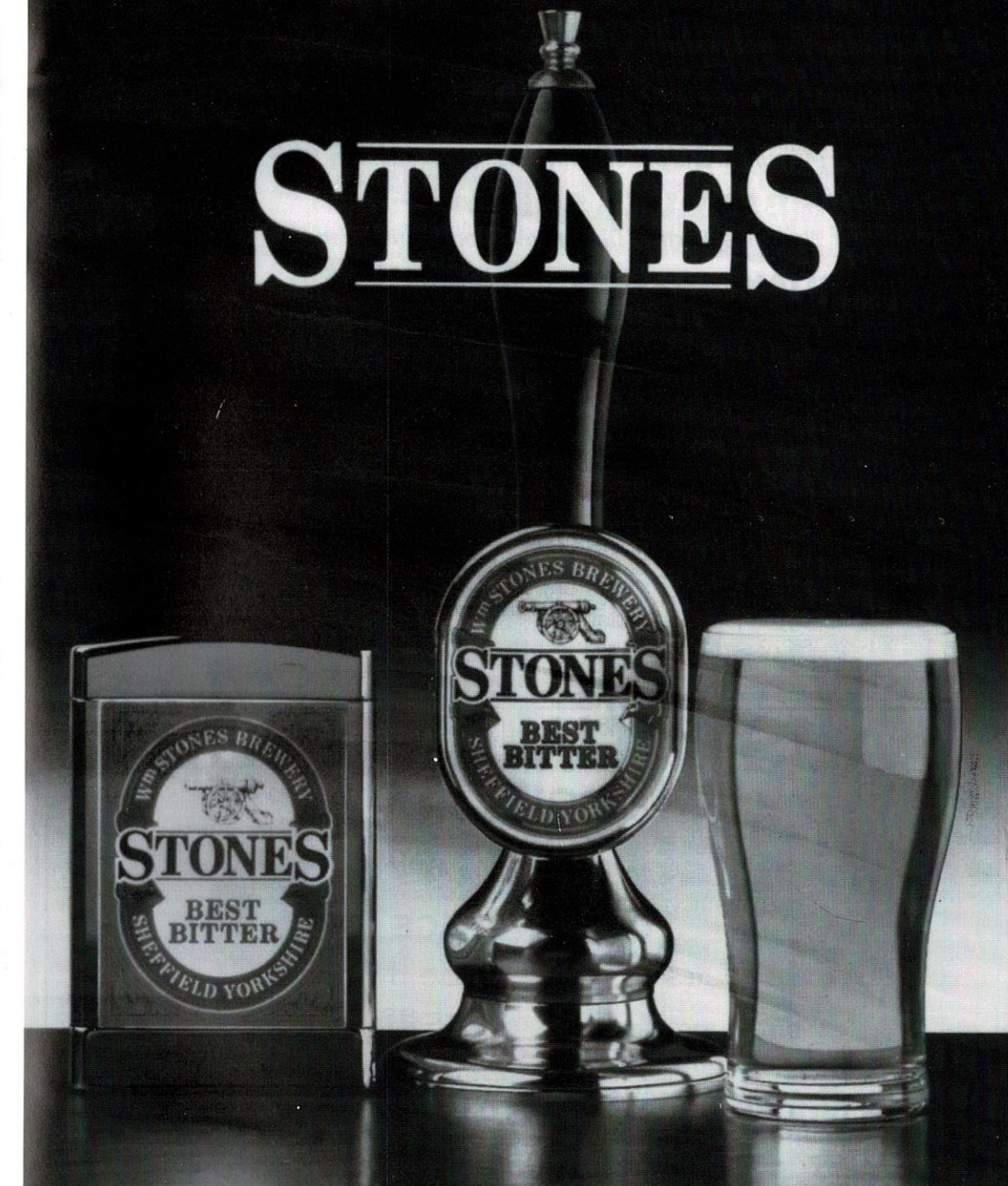
Charterplan

- * LUXURY COACHES SEATING UP TO 57
- * SUPERCOACHES WITH 49 SEATS TOILET / WASHROOM & VIDEO
- * DISABLED PERSONS COACH GROUPS - OVERSEAS TOURS - SHOPPING TRIPS
- * OFFICE PARTIES - CONTRACT WORK

061-477 3555

FAX No. 061 480 2163
 151 CHARLES STREET, STOCKPORT SK1 3JU

STONES



THE MAJOR SPONSORS OF THE RUGBY LEAGUE.

WILLOWS VARIETY CENTRE

Willows Road, Salford

THE WILLOW TREE RESTAURANT

Offers excellent cuisine with a wide choice of menus

OPEN MONDAY - FRIDAY LUNCH from 12 noon - choice menus + bar snacks.

FRIDAY/SATURDAY evenings from 7 pm: 3 course menus from £6.90.

Table D'Hote (4 courses and coffee) only £9.95 plus extensive A la Carte menu.

WILLOWS BANQUET SUITE

Available for Weddings, Parties, Dinners etc. Competitive menus, resident D.J.

WEDNESDAY, 4th MAY, 1994

THE CEBORA LANCE TODD PRESENTATION/DINNER

Guest speaker KEVIN CONNOLLY ("a man of many voices")

Tickets £19.00 including 4-course dinner. Reception 7.30 p.m. for 8.00 p.m.

Enquiries to Margaret McCance Tel: 061-736 8541

MATCHBALL DONATED BY...

DATA PROCESSING DIRECT

Suite 55, Greenheys Business Centre, 10 Pencroft Way, Manchester M15 6JJ.
Tel: 061-226 7862.
Fax: 061-226 7864.

MIDAS LOTTERIES LTD.

Repeat House, Bright Road, Eccles, Manchester M30 0WR.
Tel: 061-787 8546.

SHERIFF ACCESS NOW PLANT HIRE

532 Eccles New Road, Salford M5 2DN.
Tel: 061-736 3814.

AUSTIN WILKINSON & SONS LTD

Haulage Contractors

OPEN STORAGE

Regular services to Merseyside, Midlands, London and the North-East.

One-ton minimum-25 ton-Full Loads

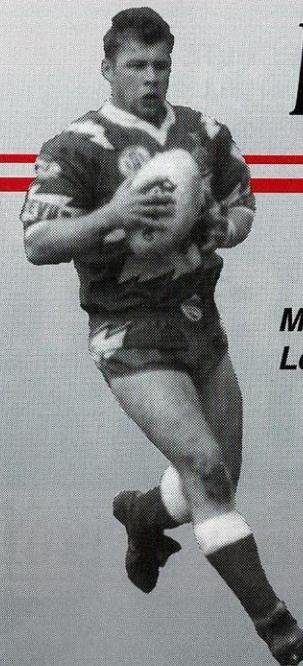
KNOTT STREET, SALFORD M5 2EF

Telephone:

061-736 2623 or 5006

FAX 061-736 5077

Rugby League News



Mark Lee

R.L. TOP TRY SCORERS

1. St. John Ellis (Castleford).....32
2. Stuart Cocker (Workington Town).....28
Mark Johnson (London C.).....28
4. Paul Newlove (Bradford Northern).....26
Mark Riley (London Crusaders).....26
6. Nick Pinkney (Keighley C.).....25
7. Carl Hall (Bradford N.).....22
8. Martin Offiah (Wigan).....21
Darren Moxon (Batley).....21
9. Jason Critchley (Salford).....21

R.L. TOP GOAL KICKERS

1. Frano Botica (Wigan).....130
2. John Gallagher (London C).....120
3. Deryck Fox (Bradford N.).....116
4. Mark Conway (Dewsbury).....114
5. Jonathan Davies (Warrington).....113
6. Lee Crooks (Castleford).....108
7. Robert Turner (Doncaster).....98
8. Mark Aston (Sheffield Eagles).....92
9. Willie Richardson (Carlisle).....84
10. Mike Kavanagh (Barrow).....83

WINNING RUN

Batley have the current longest winning run of seven matches.

LOSING RUN

Hunslet have extended their current longest losing run of ten matches made up of nine Division 2 matches and one Silk Cut Challenge Cup.

MILESTONES

Les Quirk of St. Helens needs two tries for a career century of touchdowns for the club.

Mark Roache's three tries for Doncaster against Highfield took him past the career century of touchdowns for the club. Roach now has 102 touchdowns since 1985, extending his Doncaster career record.

Scott Ranson of Oldham has now scored a career century of touchdowns for the club.

Deryck Fox of Bradford Northern needs two tries for a career century of touchdowns in Club and Representative matches.



MIDAS LOTTERIES

Suppliers of the computerised lottery for Salford RLFC and both the Rugby and Football Leagues.

MIDAS LOTTERIES LTD., REPEAT HOUSE, BRIGHT ROAD, ECCLES, MANCHESTER, M30 0WR. TELEPHONE: 061 787 8546



SHOCK WIN

Salford pulled off one of the shocks of the season with their 34-22 victory over high-flying Hull.

Star of the show was Reds centre Chris Arden who ran in four good tries.

Salford led comfortably by 18 points to nil at the break and they extended their lead to an amazing 34 points to 6 before Hull began to realise they were in a game. They whittled the Reds lead down to 12 points but it was far too late in the game to affect the result.

RECENT RESULTS

SALFORD 34 . . . HULL 22

Salford Scorers:

Tries: Arden (4), McAvoy, Skaife.

Goals: Griffin (5).

LEAGUE TABLE

	P.	W.	D.	L.	F.	A.	Pts.
St. Helens	16	14	0	2	582	208	28
Wigan	15	13	0	2	460	182	26
Warrington	18	13	0	5	503	356	26
Hull	18	10	1	7	334	238	21
Wakefield Trinity	16	9	0	7	382	316	18
Leeds	16	9	0	7	340	295	18
Castleford	14	7	0	7	283	347	14
Leigh	12	4	0	8	220	379	8
Bradford N.	15	4	0	11	239	434	8
Halifax	14	3	1	10	263	381	7
Hull K.R.	17	3	0	14	258	472	6
Salford	15	3	0	12	212	468	6

Salford moved into the quarter-finals of the Academy Cup with a 14-8 second round victory over Bradford Northern. Tries came from Skaife, Ogden and Griffin who also added a conversion.



**The Big League.
Live only on Sky Sports.**

LIVE GAMES EVERY FRIDAY 7PM.

BIG LEAGUE MATCH OF THE DAY EVERY SUNDAY AT 7PM.

PLUS BOOTS 'N' ALL EVERY THURSDAY AT 7PM.



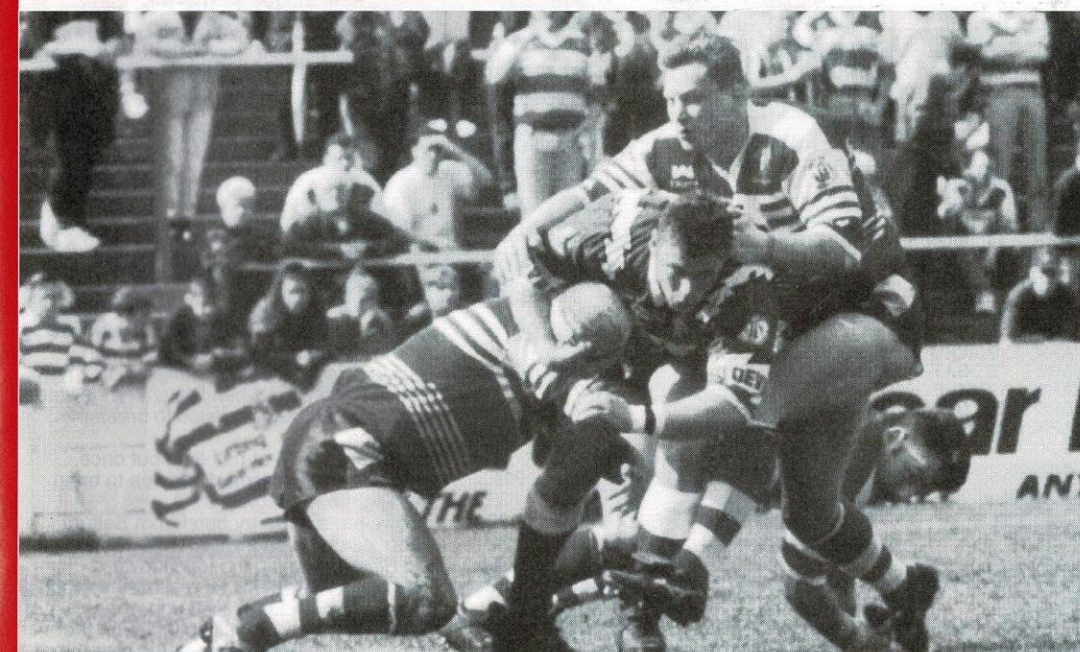
FIRST CHOICE FOR SPORTS.

Sky Sports is a subscription channel of British Sky Broadcasting Limited. Astra satellite receiving and decoding equipment required. Programmes listed are subject to alteration.

RRG Salford Quays

**IF IT'S POWER &
PERFORMANCE
YOU'RE AFTER**

Your Best Catch is A **TOYOTA**



From the Country's Leading Dealer

RRG Salford Quays

ALBION WAY, CROSS LANE, SALFORD

TEL: (061) 745 7766

ALLIANCE



ALLIANCE FIXTURES 1993/94

1993						
AUG	18	WED	LEIGH (FRIENDLY)	A	7.30	36-12
AUG	26	THUR	BATLEY	A	7.30	38-8
SEPT	3	FRI	ST. HELENS	H	7.30	33-12
SEPT	10	FRI	WIDNES	A	7.30	26-20
SEPT	17	FRI	BATLEY	H	8.00	51-10
SEPT	22	WED	LEEDS	A	7.30	34-14
OCT	4	MON	ST. HELENS (LANCS-SHIELD 1)	H	8.00	28-19
OCT	7	THUR	HALIFAX	H	8.00	50-16
OCT	22	FRI	WARRINGTON (LANCS-SHIELD 2)	A	7.30	22-31
OCT	29	FRI	BRADFORD N.	H	8.00	44-6
NOV	8	MON	WARRINGTON	A	7.30	16-31
NOV	12	FRI	BRADFORD N.	A	7.30	post.
NOV	26	FRI	FEATHERSTONE R.	H	8.00	62-2
DEC	3	FRI	WAKEFIELD T.	A	7.30	22-23
DEC	9	THUR	CASTLEFORD	A	7.30	16-24
DEC	17	FRI	WIGAN	H	8.00	post.
DEC	23	THUR	HULL	A	8.00	post.
1994						
JAN	9	SUN	DEWSBURY (ALL. CUP 1)	A	7.30	52-0
JAN	17	MON	WIDNES	H	8.00	48-10
JAN	21	FRI	ST. HELENS	A	7.30	22-32
JAN	28	FRI	HULL (ALL. CUP 2)	A	7.30	18-14
FEB	4	FRI	LEEDS	H	8.00	26-12
FEB	11	FRI	RYEDALE YORK	A	7.30	14-15
FEB	18	FRI	LEEDS (ALL. CUP 3)	H	8.00	54-14
FEB	25	FRI	WIGAN	H	8.00	28-14
MAR	4	FRI	HALIFAX	A	7.30	24-12
MAR	11	FRI	CASTLEFORD	H	8.00	post.
MAR	14	MON	WARRINGTON (ALL. CUP SEMI)	H	8.00	14-10
MAR	18	FRI	FEATHERSTONE ROVERS	A	7.30	16-20
MAR	22	TUE	WAKEFIELD TRINITY	H	8.00	34-22
MAR	25	FRI	WARRINGTON	H	8.00	32-22
MAR	29	TUE	HULL	H	8.00	
APR	5	TUE	HULL	A	8.00	
APR	7	THU	CASTLEFORD	H	8.00	
APR	9	SAT	WIGAN	A	2.30	
APR	14	TUE	OLDHAM (ALL. CUP FINAL)	A	7.30	
APR	18	MON	RYEDALE YORK	H	7.30	
APR	21	THU	BRADFORD NORTHERN	A	7.30	

DIVISION ONE LEAGUE TABLE						
	P.	W.	D.	L.	F.	Pts.
St. Helens	24	19	0	5	773	479
Warrington	21	16	0	5	662	315
Wigan	22	16	0	6	632	372
Castleford	21	15	0	6	501	321
Bradford Northern	22	15	0	7	508	427
Salford	20	14	0	6	636	329
Wakefield Trinity	22	10	0	12	500	523
Halifax	20	10	0	10	470	508
Hull	20	9	0	11	338	470
Ryedale-York	21	8	0	13	456	553
Featherstone R.	19	7	0	12	307	492
Widnes	20	4	0	16	328	617
Leeds	21	4	0	17	411	560
Batley	22	2	0	20	276	758



Alliance Coach
STEVE O'NEILL

RESULT IN DETAIL

SALFORD 32 . . . WARRINGTON 22
Team: Wynne; O'Neill, Gilfillan, Naylor, Birkett; Reid, Quigley; Webster, Brookfield, Stazicker, Betts, Tauro, Randall. Subs: Coussons, Swift.
Scorers: Tries: Birkett (2), Webster (2), Quigley, O'Neill, Stazicker. Goals: Birkett (2).

Salford spoiled Warrington's title aspirations with a workmanlike display which meant that they had in fact beaten their opponents twice within the space of a fortnight.

On this occasion Wire took an early lead but the Reds came storming back with touchdowns from Birkett, Quigley and Webster and even when Steve Wynne was sin-binned Warrington failed to break the home line.

Salford led 14-8 at half-time but once again Warrington scored early on to bring them right back in the game.

However, a three try burst from Salford made the game safe with O'Neill, Stazicker and Birkett claiming the touchdowns.

Although Warrington hit back with further tries, Salford had the last laugh when Webster went in for his second try of the game to seal a Reds victory and give them an outside chance of taking the First Division title.

LEADING TRY SCORERS: Potts, Betts 15 each; Coussons 13; Gilfillan 11, Evans 10, Webster, Quigley, Gibson, Reid, O'Neill 8 each.

SUPPLIED BY

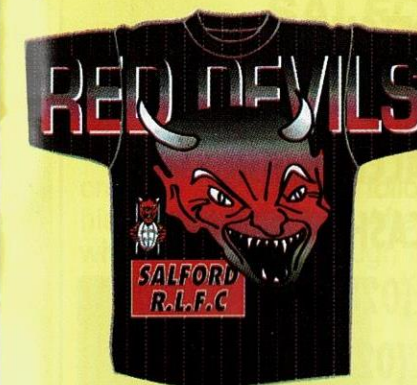


Mitre

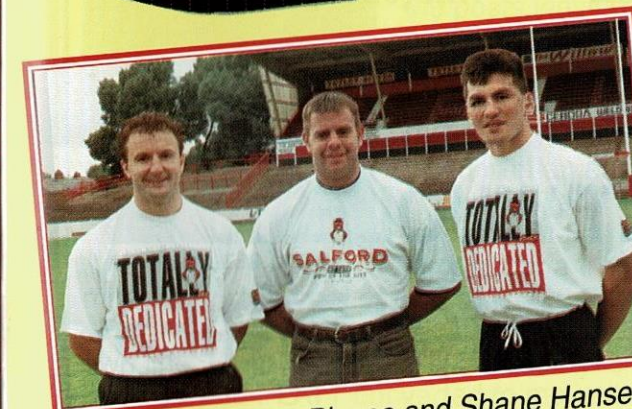
absolute performance™

MITRE SPORTS INTERNATIONAL LTD.
BIRKBY, HUDDERSFIELD, HD1 5AJ. TEL: 0484 537488. FAX: 0484 530042

Ideal gifts for any occasion



T-SHIRTS - SWEATSHIRTS
MUGS - TIES - SCARVES
and much, much more



Martin Birkett, Ian Blease and Shane Hansen display the latest range of Kick Sportswear.



**RED DEVILS
BREAKOUT T-SHIRTS**

THE RED DEVILS "TACKLE" SHOP

Open for business in the recently refurbished Salford City Shopping Complex.

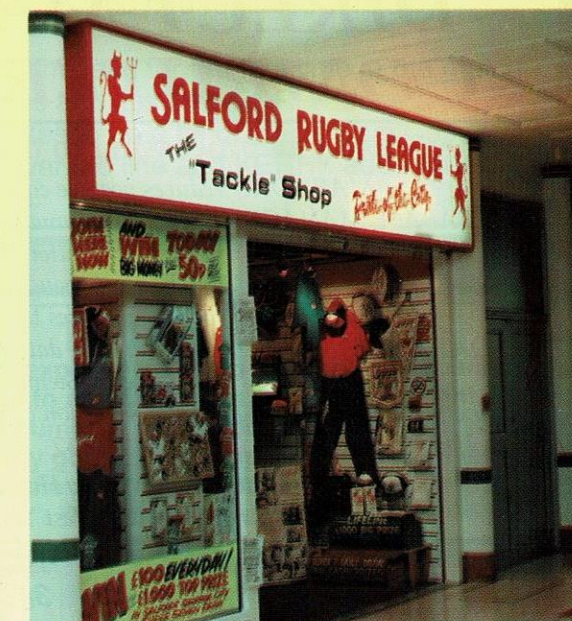
A complete range of leisurewear plus the brand new replica shirt is available. Ideal presents and gift ideas for every taste whether its a club pencil or a full team strip, we will endeavour to please.

Payments for your Lifeline and Super Seven subscriptions can also be made at the shop.

Opening hours:

Mon-Sat 9.00 am. - 5.00 p.m.

TEL: 061-745 7898



TODAY'S MATCH HOST



**METCALF DRIVE
ALTHAM INDUSTRIAL ESTATE
ACCRINGTON
LANCASHIRE BB5 5TP
TEL (0282) 777444
FAX (0282) 770055**

**THE UK'S LARGEST
INDEPENDENT WHOLESALE
DISTRIBUTOR OF TOILETRIES**

DIRECT MARKETING COMPUTER SERVICES

Specialist data processing to the Direct Marketing industry.

MAILSORT—reduces postage costs on regular/volume mailings.

DATABASE MANAGEMENT—let us manage/enhance your mailing lists including laser printed letters/labels/lists.

DE-DUPLICATION/MERGE—merge bought-in cold lists with your own mailing lists removing costly duplicates to increase your prospect list.

DATA REFORMATTING—Reforming data to suit large volume laser/ink jet printers (Xerox/Siemens/Ink jet).

Whether you have 4000 names or 4 million contact Keith Adams or Paul Bloomfield on:—

Tel: Wakefield (0924) 420292 Fax: Wakefield (0924) 420892

*Suites 1 & 2, Wesley House, Huddersfield Road,
Birstall, Batley, West Yorkshire, WF 17 OEJ.*

PREVIOUS ENCOUNTER

AUGUST 26TH 1990

DIVISION ONE

SALFORD 27 . . . OLDHAM 24

Salford shone as brightly as the weather in the early stages but it was Oldham who had the first chance to put points on the board but Platt pulled his penalty attempt wide of the mark.

In the 10th minute the Willows fans had something to cheer when HADLEY crossed in the corner following good work by Fell but Kerry was off target with his conversion. (4-2). After only 20 minutes, the home side increased their lead when Fell sliced through the Oldham defence to set up a try for GIBSON and



ANDY BURGESS . . . 2 tries

KERRY added a great goal. (10-2). Both sides were treating the fans to some fine open rugby and danger man McALLISTER scored a solo try for the visitors by the posts leaving PLATT with a simple chance to convert. (10-8).

This try did not deter Salford from their efforts and following some fine work by Sherratt and Fell, BIRKETT ran the final 40 yards to touch down. Kerry failed with an easy conversion chance. (14-8).

Now the Reds were in command and another break by stand off Fell resulted in BURGESS charging through for a try and this time KERRY made no

mistake from in front of the posts. (20-8).

From the kick off Hadley knocked on to put the Reds under pressure on their own line. From the set of six tackles Pyke handed on for ROUND to score a good try and PLATT converted to make it 20-14 for Salford at the break.

After the interval Cassidy replaced Fell while the visitors had Newton on for Fieldhouse. Oldham crept back into the game when some indiscipline by Salford allowed PLATT the opportunity to kick two penalty goals. (20-18). It was too close for comfort now but BROWN, who had replaced Whiteley, dropped a goal on the hour. (21-18).

Two minutes later though Oldham took the lead for the first time in the match when MARTYN scored from a Clark pass and this time FORD added a comfortable goal. (21-24). With six minutes to go a bit of magic from Cassidy enabled BURGESS to go scampering over the line and KERRY added the goal to finally sink a gallant Oldham side.



TRAVELLING AWAY?

TRAVEL NEWS

Due to the expense involved in the hire of coaches, our travel to away matches will be dependent on sufficient numbers of fans booking in advance. We have a very good away support, why not travel in comfort to the next match. Contact the Pools Office for booking details.

Ellgren

THE ULTIMATE
IN STYLE AND
DURABILITY



OFFICIAL SUPPLIERS OF TEAM KIT TO **SALFORD R.L.F.C.**
Available from the kiosk on the ground, Club Shop and all good Sports Shops.

THE MARKET LEADERS IN RUGBY LEAGUE ON VIDEO

GOOD RATES ON DUPLICATION, SCRIPTING, VOICE OVERS
QUALITY FILMING OF ANY EVENT, SPORT, CONFERENCES ETC.



SINGLE CAMERA

MICRON VIDEO PRODUCTIONS

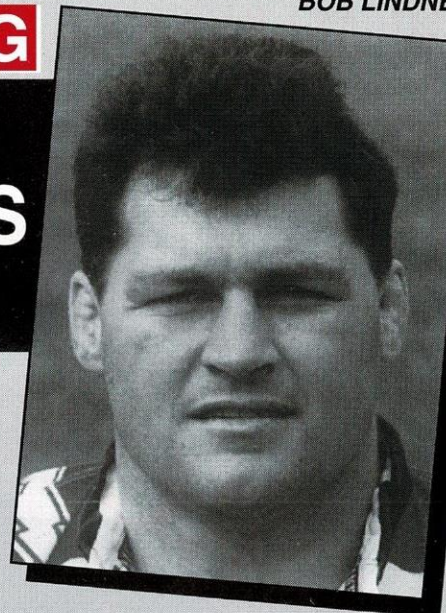


MULTI CAMERA

1st Floor, 130-134 Gidlow Lane, Wigan WN6 7EA
Telephone: 0942 321919. Fax: 0942 821261

For all your Corporate Video requirements

AUSSIE TEST ACE BOB KNOWS THE SCORE



Aussie Test forward and current player/coach at Oldham Bob Lindner knows all about pressure, after a decade at the top in International and State of Original football.

The Watersheddings powers that be, committed themselves to a big investment for the future when they signed up second rower Lindner and now with the departure of his fellow countryman Peter Tunks, he has been given the added responsibility of coaching duties.

However, the likeable Queenslander has taken on the extra responsibility in his stride and already Oldham are beginning to bear fruit from his promptings.

Bob originally began his career with Brisbane Souths and went on to win a Brisbane premiership with Wynnum-Manly before playing Winfield Cup football with Parramatta, Gold Coast and Wests.

He gained the first of his 20 caps for Queensland in 1984 before making a try scoring debut for the Kangaroos against Papua New Guinea in 1986.

A trip to this Country with the all conquering 1986 Green and Golds followed and he quickly gained a reputation as the natural successor to Ray Prince in the number thirteen jersey.

Castleford were quick to sign him up for a spell in that 1986-87 season and he played 9 matches, scoring 5 tries, before returning to Australia. He returned to Wheldon Road in 1987 and made a further ten appearances for

Castleford, this time scoring 4 tries.

His dual spell at Castleford were a boon to him as it made him realise how the game has changed in this Country and he was full of praise for the determined way in which Mal Reilly has gone about his task.

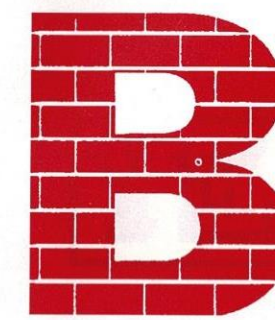
It was Reilly who was in charge at Wheldon Road when Lindner first came to this Country but there is no comparison now to the slender Queenslander who first arrived in 1986.

A carefully played weights programme has transformed his 13 stone physique into a heavier muscle bound frame that has seen his weight increase to over 14 stone in 1990 and now over 16 stone in 1994. Consequently, he has also gained in strength which is of paramount importance for the rigours of the pressurised Winfield Cup Competition Down Under.

Now his main task is to ensure that Oldham stay in the First Division and given his proud track record then it seems likely that their top flight status will remain at the end of April.

The Rossendale Group of Lifting Gear Companies

Head Office: Vine Grove Testing Works, Haslingden, Rossendale, Lancashire BB4 5JU.
Telephone: Rossendale (0706) 213577. Fax: (0706) 830490.



The Brick People

Beal Builders' Merchants

*The largest stockists of facing bricks
in the North West*



**THE BRICKS YOU WANT
AT THE PRICE YOU
WANT TO PAY**

**WE SUPPLY BRICKS OF DISTINCTION
AT PRICES YOU CAN AFFORD**

VISIT OUR STOCK YARD & SHOWROOM WITHOUT OBLIGATION

BURY & BOLTON ROAD, RADCLIFFE, BOLTON B38 7TA